



Full wwPDB X-ray Structure Validation Report ⓘ

Oct 11, 2021 – 07:24 AM EDT

PDB ID : 3C4F
Title : FGFR TYROSINE KINASE DOMAIN IN COMPLEX WITH 3-(3-methoxy
benzyl)-7-azaindole
Authors : Zhang, K.Y.J.; Wang, W.
Deposited on : 2008-01-29
Resolution : 2.07 Å(reported)

This is a Full wwPDB X-ray Structure Validation Report for a publicly released PDB entry.

We welcome your comments at validation@mail.wwpdb.org

A user guide is available at

<https://www.wwpdb.org/validation/2017/XrayValidationReportHelp>

with specific help available everywhere you see the ⓘ symbol.

The following versions of software and data (see [references ⓘ](#)) were used in the production of this report:

MolProbity : 4.02b-467
Mogul : 1.8.5 (274361), CSD as541be (2020)
Xtrriage (Phenix) : **NOT EXECUTED**
EDS : **NOT EXECUTED**
Percentile statistics : 20191225.v01 (using entries in the PDB archive December 25th 2019)
Ideal geometry (proteins) : Engh & Huber (2001)
Ideal geometry (DNA, RNA) : Parkinson et al. (1996)
Validation Pipeline (wwPDB-VP) : 2.23.2

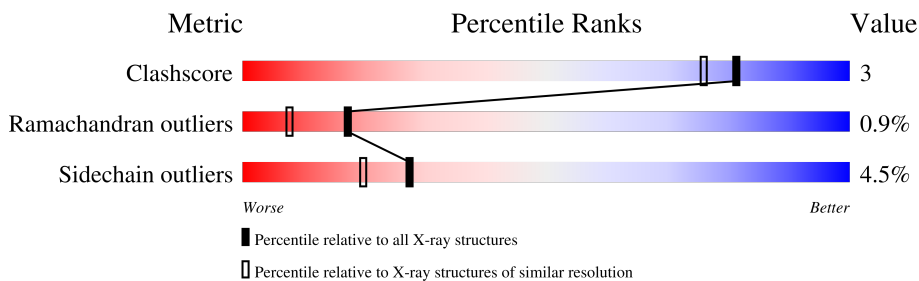
1 Overall quality at a glance

The following experimental techniques were used to determine the structure:

X-RAY DIFFRACTION

The reported resolution of this entry is 2.07 Å.

Percentile scores (ranging between 0-100) for global validation metrics of the entry are shown in the following graphic. The table shows the number of entries on which the scores are based.



Metric	Whole archive (#Entries)	Similar resolution (#Entries, resolution range(Å))
Clashscore	141614	2801 (2.08-2.04)
Ramachandran outliers	138981	2768 (2.08-2.04)
Sidechain outliers	138945	2768 (2.08-2.04)

The table below summarises the geometric issues observed across the polymeric chains and their fit to the electron density. The red, orange, yellow and green segments of the lower bar indicate the fraction of residues that contain outliers for ≥ 3 , 2, 1 and 0 types of geometric quality criteria respectively. A grey segment represents the fraction of residues that are not modelled. The numeric value for each fraction is indicated below the corresponding segment, with a dot representing fractions $\leq 5\%$.

Note EDS was not executed.

Mol	Chain	Length	Quality of chain
1	A	302	
1	B	302	

2 Entry composition i

There are 3 unique types of molecules in this entry. The entry contains 5031 atoms, of which 0 are hydrogens and 0 are deuteriums.

In the tables below, the ZeroOcc column contains the number of atoms modelled with zero occupancy, the AltConf column contains the number of residues with at least one atom in alternate conformation and the Trace column contains the number of residues modelled with at most 2 atoms.

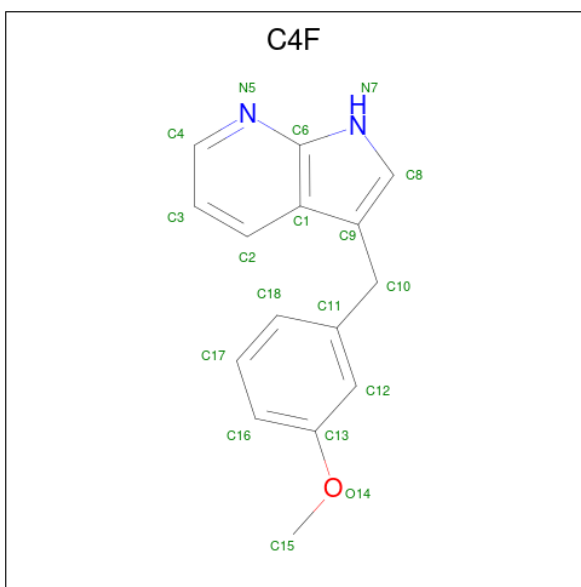
- Molecule 1 is a protein called Basic fibroblast growth factor receptor 1.

Mol	Chain	Residues	Atoms					ZeroOcc	AltConf	Trace
			Total	C	N	O	S			
1	A	290	2320	1472	401	429	18	0	1	0
1	B	290	2319	1472	401	429	17	0	0	0

There are 2 discrepancies between the modelled and reference sequences:

Chain	Residue	Modelled	Actual	Comment	Reference
A	488	ALA	CYS	engineered mutation	UNP P11362
B	488	ALA	CYS	engineered mutation	UNP P11362

- Molecule 2 is 3-(3-methoxybenzyl)-1H-pyrrolo[2,3-b]pyridine (three-letter code: C4F) (formula: C₁₅H₁₄N₂O).



Mol	Chain	Residues	Atoms				ZeroOcc	AltConf
			Total	C	N	O		
2	A	1	18	15	2	1	0	0

Continued on next page...

Continued from previous page...

Mol	Chain	Residues	Atoms				ZeroOcc	AltConf
			Total	C	N	O		
2	B	1	18	15	2	1	0	0

- Molecule 3 is water.


Mol	Chain	Residues	Atoms		ZeroOcc	AltConf
3	A	213	Total 213	O 213	0	0
3	B	143	Total 143	O 143	0	0

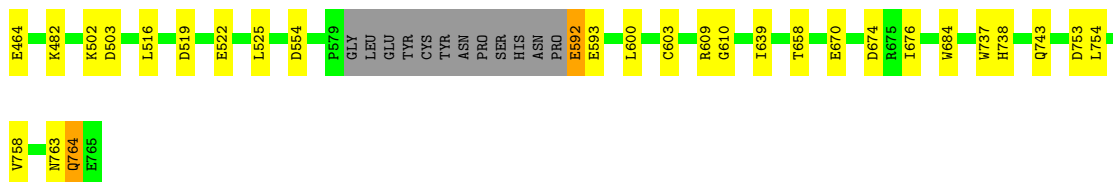
3 Residue-property plots

These plots are drawn for all protein, RNA, DNA and oligosaccharide chains in the entry. The first graphic for a chain summarises the proportions of the various outlier classes displayed in the second graphic. The second graphic shows the sequence view annotated by issues in geometry. Residues are color-coded according to the number of geometric quality criteria for which they contain at least one outlier: green = 0, yellow = 1, orange = 2 and red = 3 or more. Stretches of 2 or more consecutive residues without any outlier are shown as a green connector. Residues present in the sample, but not in the model, are shown in grey.


Note EDS was not executed.

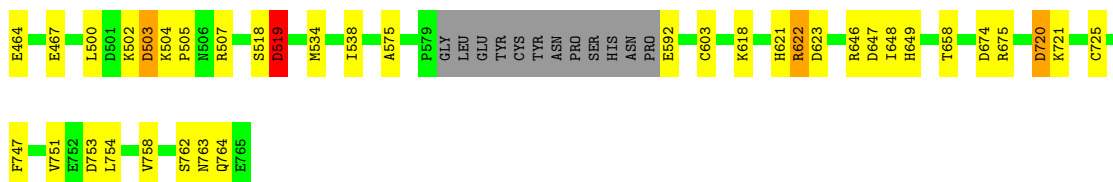
- Molecule 1: Basic fibroblast growth factor receptor 1

Chain A:  86% 9% . .



- Molecule 1: Basic fibroblast growth factor receptor 1

Chain B:  84% 11% . .



4 Data and refinement statistics

Xtrriage (Phenix) and EDS were not executed - this section is therefore incomplete.

Property	Value	Source
Space group	C 1 2 1	Depositor
Cell constants a, b, c, α , β , γ	208.19Å 57.62Å 65.37Å 90.00° 107.62° 90.00°	Depositor
Resolution (Å)	50.00 – 2.07	Depositor
% Data completeness (in resolution range)	94.5 (50.00-2.07)	Depositor
R_{merge}	(Not available)	Depositor
R_{sym}	0.10	Depositor
Refinement program	REFMAC 5.1.25	Depositor
R, R_{free}	0.211 , 0.264	Depositor
Estimated twinning fraction	No twinning to report.	Xtrriage
Total number of atoms	5031	wwPDB-VP
Average B, all atoms (Å ²)	33.0	wwPDB-VP

5 Model quality

5.1 Standard geometry

Bond lengths and bond angles in the following residue types are not validated in this section: C4F

The Z score for a bond length (or angle) is the number of standard deviations the observed value is removed from the expected value. A bond length (or angle) with $|Z| > 5$ is considered an outlier worth inspection. RMSZ is the root-mean-square of all Z scores of the bond lengths (or angles).

Mol	Chain	Bond lengths		Bond angles	
		RMSZ	# Z >5	RMSZ	# Z >5
1	A	0.65	0/2373	0.87	4/3204 (0.1%)
1	B	0.58	0/2367	0.83	6/3196 (0.2%)
All	All	0.61	0/4740	0.85	10/6400 (0.2%)

There are no bond length outliers.

All (10) bond angle outliers are listed below:

Mol	Chain	Res	Type	Atoms	Z	Observed(°)	Ideal(°)
1	B	753	ASP	CB-CG-OD2	6.99	124.59	118.30
1	B	647	ASP	CB-CG-OD2	6.21	123.89	118.30
1	B	519	ASP	CB-CG-OD1	6.12	123.81	118.30
1	B	623	ASP	CB-CG-OD2	6.01	123.71	118.30
1	B	674	ASP	CB-CG-OD2	5.95	123.65	118.30
1	A	554	ASP	CB-CG-OD2	5.91	123.62	118.30
1	A	753	ASP	CB-CG-OD2	5.46	123.22	118.30
1	A	674	ASP	CB-CG-OD2	5.44	123.20	118.30
1	A	519	ASP	CB-CG-OD2	5.37	123.14	118.30
1	B	503	ASP	CB-CG-OD2	5.03	122.83	118.30

There are no chirality outliers.

There are no planarity outliers.

5.2 Too-close contacts

In the following table, the Non-H and H(model) columns list the number of non-hydrogen atoms and hydrogen atoms in the chain respectively. The H(added) column lists the number of hydrogen atoms added and optimized by MolProbity. The Clashes column lists the number of clashes within the asymmetric unit, whereas Symm-Clashes lists symmetry-related clashes.

Mol	Chain	Non-H	H(model)	H(added)	Clashes	Symm-Clashes
1	A	2320	0	2335	13	0
1	B	2319	0	2334	11	0
2	A	18	0	14	0	0
2	B	18	0	14	0	0
3	A	213	0	0	3	0
3	B	143	0	0	4	0
All	All	5031	0	4697	24	0

The all-atom clashscore is defined as the number of clashes found per 1000 atoms (including hydrogen atoms). The all-atom clashscore for this structure is 3.

All (24) close contacts within the same asymmetric unit are listed below, sorted by their clash magnitude.

Atom-1	Atom-2	Interatomic distance (Å)	Clash overlap (Å)
1:A:738:HIS:CD2	1:A:743:GLN:HB2	2.11	0.85
1:B:518:SER:O	3:B:332:HOH:O	2.13	0.67
1:A:738:HIS:HD2	1:A:743:GLN:HB2	1.65	0.58
1:A:763:ASN:O	1:A:764:GLN:HB2	2.04	0.58
1:B:464:GLU:OE1	3:B:78:HOH:O	2.18	0.56
1:B:649:HIS:HA	1:B:675:ARG:NH1	2.22	0.54
1:B:754:LEU:O	1:B:758:VAL:HG23	2.08	0.53
1:B:747:PHE:O	1:B:751:VAL:HG23	2.09	0.52
1:B:519:ASP:OD1	3:B:326:HOH:O	2.19	0.52
1:A:610:GLY:HA3	1:A:639:ILE:HD12	1.92	0.52
1:B:534:MET:HG3	1:B:538:ILE:HD12	1.95	0.49
1:A:684:TRP:CD1	1:A:684:TRP:C	2.86	0.48
1:A:670:GLU:OE1	3:A:785:HOH:O	2.20	0.48
1:A:670:GLU:HG3	3:A:770:HOH:O	2.14	0.47
1:B:721:LYS:NZ	1:B:725:CYS:O	2.46	0.46
1:B:621:HIS:O	1:B:622:ARG:HB2	2.15	0.46
1:A:754:LEU:O	1:A:758:VAL:HG23	2.17	0.45
1:A:592:GLU:O	1:A:593:GLU:C	2.57	0.43
1:A:516:LEU:HD11	1:A:525:LEU:HD13	2.01	0.42
1:A:684:TRP:CE3	1:A:737:TRP:HA	2.54	0.42
1:B:575:ALA:HB2	3:B:161:HOH:O	2.19	0.42
1:B:720:ASP:N	1:B:720:ASP:OD1	2.53	0.42
1:A:676:ILE:HD13	3:A:935:HOH:O	2.19	0.41
1:A:600:LEU:O	1:A:603[A]:CYS:HB3	2.20	0.41

There are no symmetry-related clashes.

5.3 Torsion angles [i](#)

5.3.1 Protein backbone [i](#)

In the following table, the Percentiles column shows the percent Ramachandran outliers of the chain as a percentile score with respect to all X-ray entries followed by that with respect to entries of similar resolution.

The Analysed column shows the number of residues for which the backbone conformation was analysed, and the total number of residues.

Mol	Chain	Analysed	Favoured	Allowed	Outliers	Percentiles	
1	A	287/302 (95%)	280 (98%)	6 (2%)	1 (0%)	41	32
1	B	286/302 (95%)	276 (96%)	6 (2%)	4 (1%)	11	3
All	All	573/604 (95%)	556 (97%)	12 (2%)	5 (1%)	17	8

All (5) Ramachandran outliers are listed below:

Mol	Chain	Res	Type
1	A	764	GLN
1	B	764	GLN
1	B	500	LEU
1	B	622	ARG
1	B	505	PRO

5.3.2 Protein sidechains [i](#)

In the following table, the Percentiles column shows the percent sidechain outliers of the chain as a percentile score with respect to all X-ray entries followed by that with respect to entries of similar resolution.

The Analysed column shows the number of residues for which the sidechain conformation was analysed, and the total number of residues.

Mol	Chain	Analysed	Rotameric	Outliers	Percentiles	
1	A	255/265 (96%)	247 (97%)	8 (3%)	40	34
1	B	254/265 (96%)	239 (94%)	15 (6%)	19	11
All	All	509/530 (96%)	486 (96%)	23 (4%)	27	20

All (23) residues with a non-rotameric sidechain are listed below:

Mol	Chain	Res	Type
1	A	464	GLU

Continued on next page...

Continued from previous page...

Mol	Chain	Res	Type
1	A	482	LYS
1	A	502	LYS
1	A	503	ASP
1	A	522	GLU
1	A	592	GLU
1	A	609	ARG
1	A	658	THR
1	B	467	GLU
1	B	502	LYS
1	B	503	ASP
1	B	504	LYS
1	B	507	ARG
1	B	519	ASP
1	B	592	GLU
1	B	603	CYS
1	B	618	LYS
1	B	646	ARG
1	B	648	ILE
1	B	658	THR
1	B	720	ASP
1	B	762	SER
1	B	763	ASN

Sometimes sidechains can be flipped to improve hydrogen bonding and reduce clashes. All (3) such sidechains are listed below:

Mol	Chain	Res	Type
1	A	738	HIS
1	A	749	GLN
1	B	680	GLN

5.3.3 RNA [i](#)

There are no RNA molecules in this entry.

5.4 Non-standard residues in protein, DNA, RNA chains [i](#)

There are no non-standard protein/DNA/RNA residues in this entry.

5.5 Carbohydrates [i](#)

There are no monosaccharides in this entry.

5.6 Ligand geometry [i](#)

2 ligands are modelled in this entry.

In the following table, the Counts columns list the number of bonds (or angles) for which Mogul statistics could be retrieved, the number of bonds (or angles) that are observed in the model and the number of bonds (or angles) that are defined in the Chemical Component Dictionary. The Link column lists molecule types, if any, to which the group is linked. The Z score for a bond length (or angle) is the number of standard deviations the observed value is removed from the expected value. A bond length (or angle) with $|Z| > 2$ is considered an outlier worth inspection. RMSZ is the root-mean-square of all Z scores of the bond lengths (or angles).

Mol	Type	Chain	Res	Link	Bond lengths			Bond angles		
					Counts	RMSZ	# $ Z > 2$	Counts	RMSZ	# $ Z > 2$
2	C4F	A	1	-	19,20,20	1.36	4 (21%)	19,27,27	1.40	2 (10%)
2	C4F	B	2	-	19,20,20	1.34	2 (10%)	19,27,27	1.13	2 (10%)

In the following table, the Chirals column lists the number of chiral outliers, the number of chiral centers analysed, the number of these observed in the model and the number defined in the Chemical Component Dictionary. Similar counts are reported in the Torsion and Rings columns. '-' means no outliers of that kind were identified.

Mol	Type	Chain	Res	Link	Chirals	Torsions	Rings
2	C4F	A	1	-	-	1/6/6/6	0/3/3/3
2	C4F	B	2	-	-	3/6/6/6	0/3/3/3

All (6) bond length outliers are listed below:

Mol	Chain	Res	Type	Atoms	Z	Observed(Å)	Ideal(Å)
2	B	2	C4F	C8-N7	-4.00	1.28	1.36
2	A	1	C4F	C8-N7	-3.50	1.29	1.36
2	B	2	C4F	C1-C6	-2.70	1.35	1.43
2	A	1	C4F	C1-C6	-2.64	1.36	1.43
2	A	1	C4F	C6-N5	-2.45	1.33	1.37
2	A	1	C4F	C2-C1	-2.20	1.37	1.42

All (4) bond angle outliers are listed below:

Mol	Chain	Res	Type	Atoms	Z	Observed(°)	Ideal(°)
2	A	1	C4F	C3-C2-C1	-4.03	115.30	120.89
2	B	2	C4F	C3-C2-C1	-2.84	116.95	120.89
2	A	1	C4F	C9-C10-C11	-2.80	107.50	114.21
2	B	2	C4F	C3-C4-N5	-2.08	120.75	123.94

There are no chirality outliers.

All (4) torsion outliers are listed below:

Mol	Chain	Res	Type	Atoms
2	A	1	C4F	C11-C10-C9-C1
2	B	2	C4F	C11-C10-C9-C1
2	B	2	C4F	C12-C13-O14-C15
2	B	2	C4F	C16-C13-O14-C15

There are no ring outliers.

No monomer is involved in short contacts.

5.7 Other polymers [i](#)

There are no such residues in this entry.

5.8 Polymer linkage issues [i](#)

There are no chain breaks in this entry.

6 Fit of model and data

6.1 Protein, DNA and RNA chains

EDS was not executed - this section is therefore empty.

6.2 Non-standard residues in protein, DNA, RNA chains

EDS was not executed - this section is therefore empty.

6.3 Carbohydrates

EDS was not executed - this section is therefore empty.

6.4 Ligands

EDS was not executed - this section is therefore empty.

6.5 Other polymers

EDS was not executed - this section is therefore empty.