



# Full wwPDB X-ray Structure Validation Report ⓘ

Jun 23, 2024 – 01:52 AM EDT

PDB ID : 6C6N  
Title : Human squalene epoxidase (SQLE, squalene monooxygenase) structure with FAD and Cmpd-4"  
Authors : Padyana, A.K.; Jin, L.  
Deposited on : 2018-01-19  
Resolution : 2.30 Å(reported)

This is a Full wwPDB X-ray Structure Validation Report for a publicly released PDB entry.

We welcome your comments at [validation@mail.wwpdb.org](mailto:validation@mail.wwpdb.org)

A user guide is available at

<https://www.wwpdb.org/validation/2017/XrayValidationReportHelp>

with specific help available everywhere you see the ⓘ symbol.

The types of validation reports are described at

<http://www.wwpdb.org/validation/2017/FAQs#types>.

---

The following versions of software and data (see [references ⓘ](#)) were used in the production of this report:

MolProbity : 4.02b-467  
Mogul : 2022.3.0, CSD as543be (2022)  
Xtriage (Phenix) : 1.20.1  
EDS : 2.37.1  
buster-report : 1.1.7 (2018)  
Percentile statistics : 20191225.v01 (using entries in the PDB archive December 25th 2019)  
Refmac : 5.8.0158  
CCP4 : 7.0.044 (Gargrove)  
Ideal geometry (proteins) : Engh & Huber (2001)  
Ideal geometry (DNA, RNA) : Parkinson et al. (1996)  
Validation Pipeline (wwPDB-VP) : 2.37.1

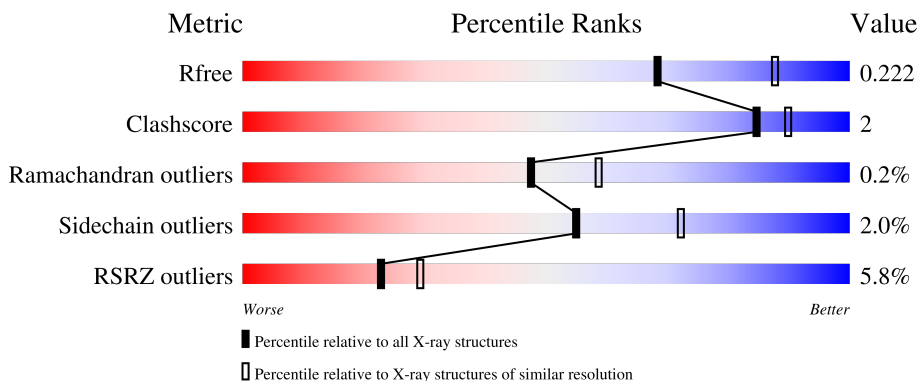
# 1 Overall quality at a glance

The following experimental techniques were used to determine the structure:

*X-RAY DIFFRACTION*

The reported resolution of this entry is 2.30 Å.

Percentile scores (ranging between 0-100) for global validation metrics of the entry are shown in the following graphic. The table shows the number of entries on which the scores are based.



Metric	Whole archive (#Entries)	Similar resolution (#Entries, resolution range(Å))
$R_{free}$	130704	5042 (2.30-2.30)
Clashscore	141614	5643 (2.30-2.30)
Ramachandran outliers	138981	5575 (2.30-2.30)
Sidechain outliers	138945	5575 (2.30-2.30)
RSRZ outliers	127900	4938 (2.30-2.30)

The table below summarises the geometric issues observed across the polymeric chains and their fit to the electron density. The red, orange, yellow and green segments of the lower bar indicate the fraction of residues that contain outliers for  $\geq 3$ , 2, 1 and 0 types of geometric quality criteria respectively. A grey segment represents the fraction of residues that are not modelled. The numeric value for each fraction is indicated below the corresponding segment, with a dot representing fractions  $\leq 5\%$ . The upper red bar (where present) indicates the fraction of residues that have poor fit to the electron density. The numeric value is given above the bar.

Mol	Chain	Length	Quality of chain
1	A	458	 7% 93% 5% ••
1	B	458	 4% 89% 9% •

## 2 Entry composition [i](#)

There are 7 unique types of molecules in this entry. The entry contains 7638 atoms, of which 0 are hydrogens and 0 are deuteriums.

In the tables below, the ZeroOcc column contains the number of atoms modelled with zero occupancy, the AltConf column contains the number of residues with at least one atom in alternate conformation and the Trace column contains the number of residues modelled with at most 2 atoms.

- Molecule 1 is a protein called Squalene monooxygenase.

Mol	Chain	Residues	Atoms					ZeroOcc	AltConf	Trace
			Total	C	N	O	S			
1	A	450	3526	2280	594	637	15	0	0	0
1	B	450	3532	2283	595	639	15	0	1	0

There are 2 discrepancies between the modelled and reference sequences:

Chain	Residue	Modelled	Actual	Comment	Reference
A	117	GLY	-	expression tag	UNP Q14534
B	117	GLY	-	expression tag	UNP Q14534

- Molecule 2 is GLYCEROL (three-letter code: GOL) (formula: C<sub>3</sub>H<sub>8</sub>O<sub>3</sub>).



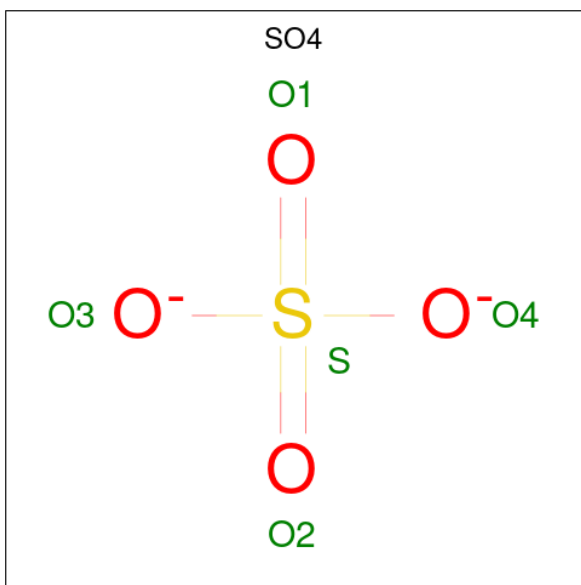
Mol	Chain	Residues	Atoms			ZeroOcc	AltConf
			Total	C	O		
2	A	1	6	3	3	0	0

*Continued on next page...*

Continued from previous page...

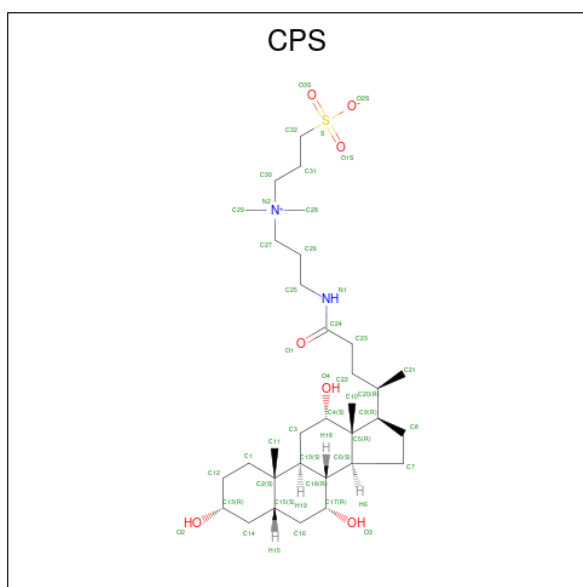
Mol	Chain	Residues	Atoms			ZeroOcc	AltConf
2	A	1	Total	C	O	0	0
			6	3	3		
2	A	1	Total	C	O	0	0
			6	3	3		
2	B	1	Total	C	O	0	0
			6	3	3		

- Molecule 3 is SULFATE ION (three-letter code: SO4) (formula: O<sub>4</sub>S).



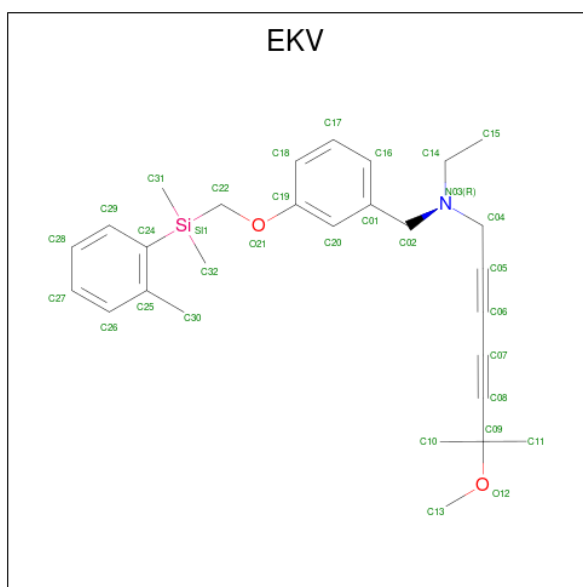
Mol	Chain	Residues	Atoms			ZeroOcc	AltConf
3	A	1	Total	O	S	0	0
			5	4	1		
3	B	1	Total	O	S	0	0
			5	4	1		

- Molecule 4 is 3-[(3-CHOLAMIDOPROPYL)DIMETHYLAMMONIO]-1-PROPANESULFONATE (three-letter code: CPS) (formula: C<sub>32</sub>H<sub>58</sub>N<sub>2</sub>O<sub>7</sub>S).



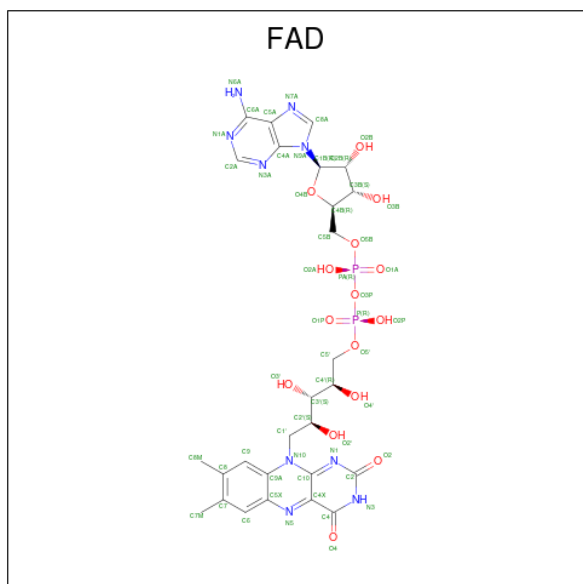
Mol	Chain	Residues	Atoms	ZeroOcc	AltConf
4	A	1	Total C N O 31 26 1 4	0	0
4	A	1	Total C N O 30 25 1 4	0	0
4	A	1	Total C O 26 23 3	0	0
4	A	1	Total C N O 29 24 1 4	0	0
4	A	1	Total C O 25 22 3	0	0
4	B	1	Total C N O 30 25 1 4	0	0
4	B	1	Total C O 26 23 3	0	0

- Molecule 5 is N-[(3-{[dimethyl(2-methylphenyl)silyl]methoxy}phenyl)methyl]-N-ethyl-6-methoxy-6-methylhepta-2,4-diyne-1-amine (three-letter code: EKV) (formula: C<sub>28</sub>H<sub>37</sub>NO<sub>2</sub>Si).



Mol	Chain	Residues	Atoms					ZeroOcc	AltConf
			Total	C	N	O	Si		
5	A	1	Total	C	N	O	Si	0	0
			32	28	1	2	1		
5	B	1	Total	C	N	O	Si	0	0
			32	28	1	2	1		

- Molecule 6 is FLAVIN-ADENINE DINUCLEOTIDE (three-letter code: FAD) (formula:  $C_{27}H_{33}N_9O_{15}P_2$ ).



Mol	Chain	Residues	Atoms					ZeroOcc	AltConf
			Total	C	N	O	P		
6	A	1	Total	C	N	O	P	0	0
			53	27	9	15	2		

*Continued on next page...*

*Continued from previous page...*

Mol	Chain	Residues	Atoms					ZeroOcc	AltConf
			Total	C	N	O	P		
6	B	1	53	27	9	15	2	0	0

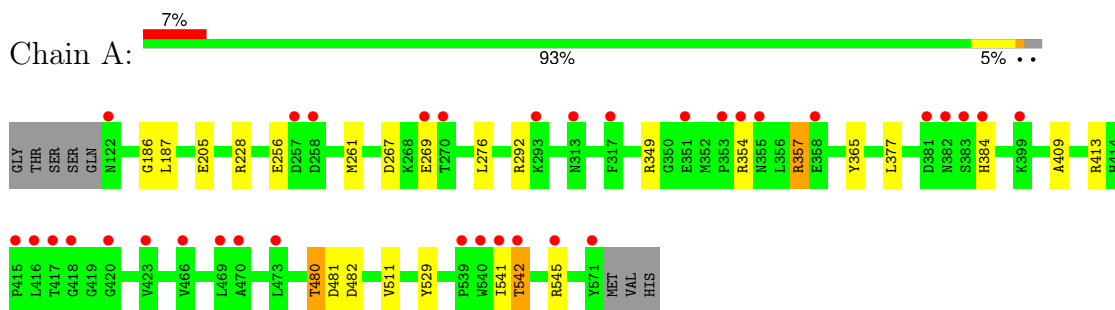
- Molecule 7 is water.

Mol	Chain	Residues	Atoms		ZeroOcc	AltConf
7	A	98	Total	O	0	0
			98	98		
7	B	81	Total	O	0	0
			81	81		

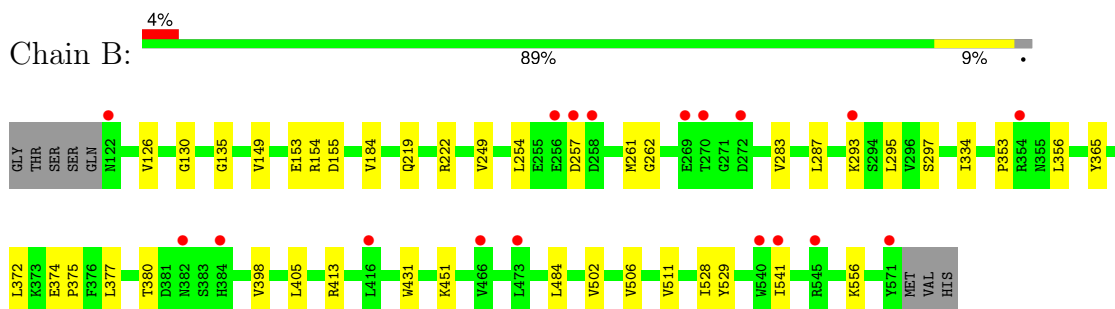
### 3 Residue-property plots [i](#)

These plots are drawn for all protein, RNA, DNA and oligosaccharide chains in the entry. The first graphic for a chain summarises the proportions of the various outlier classes displayed in the second graphic. The second graphic shows the sequence view annotated by issues in geometry and electron density. Residues are color-coded according to the number of geometric quality criteria for which they contain at least one outlier: green = 0, yellow = 1, orange = 2 and red = 3 or more. A red dot above a residue indicates a poor fit to the electron density ( $RSRZ > 2$ ). Stretches of 2 or more consecutive residues without any outlier are shown as a green connector. Residues present in the sample, but not in the model, are shown in grey.

- Molecule 1: Squalene monooxygenase



- Molecule 1: Squalene monooxygenase





## 4 Data and refinement statistics i

Property	Value	Source
Space group	P 32 2 1	Depositor
Cell constants a, b, c, $\alpha$ , $\beta$ , $\gamma$	126.96Å 126.96Å 166.12Å 90.00° 90.00° 120.00°	Depositor
Resolution (Å)	37.16 – 2.30 37.17 – 2.30	Depositor EDS
% Data completeness (in resolution range)	98.8 (37.16-2.30) 98.8 (37.17-2.30)	Depositor EDS
$R_{merge}$	(Not available)	Depositor
$R_{sym}$	0.08	Depositor
$\langle I/\sigma(I) \rangle$ <sup>1</sup>	3.97 (at 2.29Å)	Xtrriage
Refinement program	PHENIX (1.11.1_2575)	Depositor
R, $R_{free}$	0.189 , 0.220 0.190 , 0.222	Depositor DCC
$R_{free}$ test set	3351 reflections (4.90%)	wwPDB-VP
Wilson B-factor (Å <sup>2</sup> )	43.3	Xtrriage
Anisotropy	0.001	Xtrriage
Bulk solvent $k_{sol}$ (e/Å <sup>3</sup> ), $B_{sol}$ (Å <sup>2</sup> )	0.35 , 46.3	EDS
L-test for twinning <sup>2</sup>	$\langle  L  \rangle = 0.49$ , $\langle L^2 \rangle = 0.33$	Xtrriage
Estimated twinning fraction	0.019 for -h,-k,l	Xtrriage
$F_o, F_c$ correlation	0.96	EDS
Total number of atoms	7638	wwPDB-VP
Average B, all atoms (Å <sup>2</sup> )	53.0	wwPDB-VP

Xtrriage's analysis on translational NCS is as follows: *The largest off-origin peak in the Patterson function is 3.03% of the height of the origin peak. No significant pseudotranslation is detected.*

<sup>1</sup>Intensities estimated from amplitudes.

<sup>2</sup>Theoretical values of  $\langle |L| \rangle$ ,  $\langle L^2 \rangle$  for acentric reflections are 0.5, 0.333 respectively for untwinned datasets, and 0.375, 0.2 for perfectly twinned datasets.

## 5 Model quality [i](#)

### 5.1 Standard geometry [i](#)

Bond lengths and bond angles in the following residue types are not validated in this section: EKV, SO4, GOL, CPS, FAD

The Z score for a bond length (or angle) is the number of standard deviations the observed value is removed from the expected value. A bond length (or angle) with  $|Z| > 5$  is considered an outlier worth inspection. RMSZ is the root-mean-square of all Z scores of the bond lengths (or angles).

Mol	Chain	Bond lengths		Bond angles	
		RMSZ	# Z  >5	RMSZ	# Z  >5
1	A	0.26	0/3609	0.44	0/4887
1	B	0.26	0/3615	0.43	0/4895
All	All	0.26	0/7224	0.43	0/9782

There are no bond length outliers.

There are no bond angle outliers.

There are no chirality outliers.

There are no planarity outliers.

### 5.2 Too-close contacts [i](#)

In the following table, the Non-H and H(model) columns list the number of non-hydrogen atoms and hydrogen atoms in the chain respectively. The H(added) column lists the number of hydrogen atoms added and optimized by MolProbity. The Clashes column lists the number of clashes within the asymmetric unit, whereas Symm-Clashes lists symmetry-related clashes.

Mol	Chain	Non-H	H(model)	H(added)	Clashes	Symm-Clashes
1	A	3526	0	3580	13	0
1	B	3532	0	3584	21	0
2	A	18	0	24	1	0
2	B	6	0	8	1	0
3	A	5	0	0	0	0
3	B	5	0	0	0	0
4	A	141	0	193	1	0
4	B	56	0	77	0	0
5	A	32	0	0	0	0
5	B	32	0	0	0	0
6	A	53	0	31	0	0

*Continued on next page...*

*Continued from previous page...*

Mol	Chain	Non-H	H(model)	H(added)	Clashes	Symm-Clashes
6	B	53	0	31	1	0
7	A	98	0	0	0	0
7	B	81	0	0	0	0
All	All	7638	0	7528	35	0

The all-atom clashscore is defined as the number of clashes found per 1000 atoms (including hydrogen atoms). The all-atom clashscore for this structure is 2.

All (35) close contacts within the same asymmetric unit are listed below, sorted by their clash magnitude.

Atom-1	Atom-2	Interatomic distance (Å)	Clash overlap (Å)
1:B:154:ARG:HG3	1:B:249:VAL:HG22	1.88	0.55
1:B:126:VAL:HB	1:B:149:VAL:HG22	1.94	0.50
1:B:334:ILE:HD13	1:B:372:LEU:HD13	1.93	0.50
1:A:365:TYR:CE1	1:A:377:LEU:HG	2.48	0.48
1:B:295:LEU:HB3	1:B:398:VAL:HG13	1.96	0.48
1:B:219:GLN:HE21	2:B:601:GOL:H32	1.78	0.47
1:A:481:ASP:OD1	1:A:482:ASP:N	2.47	0.47
1:B:431:TRP:CH2	1:B:451:LYS:HG3	2.50	0.47
1:B:484:LEU:HG	1:B:556:LYS:HG2	1.96	0.47
1:B:374:GLU:HB3	1:B:375:PRO:HD3	1.96	0.47
1:B:431:TRP:HH2	1:B:451:LYS:HG3	1.80	0.47
1:B:283:VAL:HB	1:B:405:LEU:HD12	1.97	0.47
1:A:256:GLU:HG3	1:A:261:MET:HG3	1.96	0.46
1:A:267:ASP:OD1	1:A:269:GLU:HG2	2.15	0.46
1:A:186:GLY:HA2	2:A:602:GOL:H32	1.98	0.46
1:A:187:LEU:HD22	1:A:228:ARG:HB3	1.97	0.46
1:A:377:LEU:HD23	1:A:377:LEU:HA	1.82	0.46
1:A:542:THR:O	1:A:545:ARG:HB2	2.15	0.46
1:B:184:VAL:HG11	1:B:222:ARG:HG3	1.97	0.46
1:A:269:GLU:OE2	1:A:269:GLU:N	2.46	0.46
1:A:349:ARG:HH12	1:A:480:THR:HG21	1.81	0.46
1:B:153:GLU:HG3	1:B:155:ASP:H	1.82	0.45
1:B:377:LEU:O	1:B:380:THR:OG1	2.33	0.44
1:A:357:ARG:HE	1:A:357:ARG:HB3	1.61	0.43
1:B:502:VAL:O	1:B:506:VAL:HG23	2.18	0.43
1:B:254:LEU:N	1:B:262:GLY:O	2.51	0.42
4:A:605:CPS:H11A	1:B:528:ILE:HG13	2.02	0.42
6:B:606:FAD:H9	6:B:606:FAD:H1'1	1.86	0.42
1:B:365:TYR:CE1	1:B:377:LEU:HG	2.55	0.41
1:B:293:LYS:HA	1:B:293:LYS:HD3	1.92	0.41

*Continued on next page...*

Continued from previous page...

Atom-1	Atom-2	Interatomic distance (Å)	Clash overlap (Å)
1:A:292:ARG:HH21	1:A:409:ALA:HA	1.85	0.41
1:A:276:LEU:HD23	1:A:276:LEU:HA	1.87	0.41
1:B:287:LEU:H	1:B:287:LEU:HD23	1.86	0.41
1:B:130:GLY:O	1:B:135:GLY:HA3	2.21	0.40
1:B:353:PRO:HG2	1:B:356:LEU:HD23	2.04	0.40

There are no symmetry-related clashes.

## 5.3 Torsion angles [i](#)

### 5.3.1 Protein backbone [i](#)

In the following table, the Percentiles column shows the percent Ramachandran outliers of the chain as a percentile score with respect to all X-ray entries followed by that with respect to entries of similar resolution.

The Analysed column shows the number of residues for which the backbone conformation was analysed, and the total number of residues.

Mol	Chain	Analysed	Favoured	Allowed	Outliers	Percentiles	
1	A	448/458 (98%)	435 (97%)	12 (3%)	1 (0%)	47	58
1	B	449/458 (98%)	438 (98%)	10 (2%)	1 (0%)	47	58
All	All	897/916 (98%)	873 (97%)	22 (2%)	2 (0%)	47	58

All (2) Ramachandran outliers are listed below:

Mol	Chain	Res	Type
1	A	511	VAL
1	B	511	VAL

### 5.3.2 Protein sidechains [i](#)

In the following table, the Percentiles column shows the percent sidechain outliers of the chain as a percentile score with respect to all X-ray entries followed by that with respect to entries of similar resolution.

The Analysed column shows the number of residues for which the sidechain conformation was analysed, and the total number of residues.

Mol	Chain	Analysed	Rotameric	Outliers	Percentiles	
1	A	384/391 (98%)	375 (98%)	9 (2%)	50	67
1	B	385/391 (98%)	379 (98%)	6 (2%)	62	78
All	All	769/782 (98%)	754 (98%)	15 (2%)	55	72

All (15) residues with a non-rotameric sidechain are listed below:

Mol	Chain	Res	Type
1	A	205	GLU
1	A	354	ARG
1	A	357	ARG
1	A	384	HIS
1	A	413	ARG
1	A	480	THR
1	A	529	TYR
1	A	541	ILE
1	A	542	THR
1	B	257	ASP
1	B	261	MET
1	B	297	SER
1	B	413	ARG
1	B	529	TYR
1	B	541	ILE

Sometimes sidechains can be flipped to improve hydrogen bonding and reduce clashes. All (1) such sidechains are listed below:

Mol	Chain	Res	Type
1	B	200	GLN

### 5.3.3 RNA [i](#)

There are no RNA molecules in this entry.

## 5.4 Non-standard residues in protein, DNA, RNA chains [i](#)

There are no non-standard protein/DNA/RNA residues in this entry.

## 5.5 Carbohydrates [i](#)

There are no monosaccharides in this entry.

## 5.6 Ligand geometry

17 ligands are modelled in this entry.

In the following table, the Counts columns list the number of bonds (or angles) for which Mogul statistics could be retrieved, the number of bonds (or angles) that are observed in the model and the number of bonds (or angles) that are defined in the Chemical Component Dictionary. The Link column lists molecule types, if any, to which the group is linked. The Z score for a bond length (or angle) is the number of standard deviations the observed value is removed from the expected value. A bond length (or angle) with  $|Z| > 2$  is considered an outlier worth inspection. RMSZ is the root-mean-square of all Z scores of the bond lengths (or angles).

Mol	Type	Chain	Res	Link	Bond lengths			Bond angles		
					Counts	RMSZ	# Z  > 2	Counts	RMSZ	# Z  > 2
4	CPS	A	609	-	28,28,45	0.20	0	46,46,70	0.41	0
4	CPS	A	605	-	34,34,45	0.19	0	53,53,70	0.37	0
2	GOL	A	603	-	5,5,5	0.37	0	5,5,5	0.33	0
4	CPS	B	603	-	33,33,45	0.16	0	52,52,70	0.37	0
5	EKV	A	610	-	30,33,33	2.50	8 (26%)	33,45,45	1.06	3 (9%)
6	FAD	B	606	-	54,58,58	0.48	0	71,89,89	0.48	1 (1%)
3	SO4	A	604	-	4,4,4	0.22	0	6,6,6	0.07	0
4	CPS	A	607	-	29,29,45	0.19	0	47,47,70	0.37	0
4	CPS	A	608	-	32,32,45	0.15	0	51,51,70	0.35	0
6	FAD	A	611	-	54,58,58	0.48	0	71,89,89	0.49	1 (1%)
3	SO4	B	602	-	4,4,4	0.25	0	6,6,6	0.08	0
2	GOL	A	601	-	5,5,5	0.37	0	5,5,5	0.31	0
5	EKV	B	605	-	30,33,33	2.50	9 (30%)	33,45,45	0.90	1 (3%)
4	CPS	B	604	-	29,29,45	0.19	0	47,47,70	0.41	0
2	GOL	B	601	-	5,5,5	0.37	0	5,5,5	0.29	0
4	CPS	A	606	-	33,33,45	0.18	0	52,52,70	0.38	0
2	GOL	A	602	-	5,5,5	0.37	0	5,5,5	0.26	0

In the following table, the Chirals column lists the number of chiral outliers, the number of chiral centers analysed, the number of these observed in the model and the number defined in the Chemical Component Dictionary. Similar counts are reported in the Torsion and Rings columns. <sup>1,2</sup> means no outliers of that kind were identified.

Mol	Type	Chain	Res	Link	Chirals	Torsions	Rings
4	CPS	A	609	-	-	0/4/69/90	0/4/4/4
4	CPS	A	605	-	-	0/12/77/90	0/4/4/4
2	GOL	A	603	-	-	2/4/4/4	-
4	CPS	B	603	-	-	3/11/76/90	0/4/4/4
5	EKV	A	610	-	-	5/27/30/30	0/2/2/2
6	FAD	B	606	-	-	2/30/50/50	0/6/6/6

Continued on next page...

Continued from previous page...

Mol	Type	Chain	Res	Link	Chirals	Torsions	Rings
4	CPS	A	608	-	-	1/9/74/90	0/4/4/4
4	CPS	A	607	-	-	0/6/71/90	0/4/4/4
6	FAD	A	611	-	-	2/30/50/50	0/6/6/6
2	GOL	A	601	-	-	2/4/4/4	-
5	EKV	B	605	-	-	2/27/30/30	0/2/2/2
4	CPS	B	604	-	-	0/6/71/90	0/4/4/4
2	GOL	B	601	-	-	2/4/4/4	-
4	CPS	A	606	-	-	2/11/76/90	0/4/4/4
2	GOL	A	602	-	-	2/4/4/4	-

All (17) bond length outliers are listed below:

Mol	Chain	Res	Type	Atoms	Z	Observed(Å)	Ideal(Å)
5	A	610	EKV	C09-C08	8.16	1.55	1.48
5	B	605	EKV	C09-C08	8.04	1.54	1.48
5	A	610	EKV	C07-C06	7.86	1.54	1.37
5	B	605	EKV	C07-C06	7.84	1.54	1.37
5	B	605	EKV	C04-C05	3.63	1.55	1.47
5	A	610	EKV	C04-C05	3.63	1.55	1.47
5	B	605	EKV	O21-C19	2.89	1.44	1.37
5	A	610	EKV	O21-C19	2.82	1.44	1.37
5	A	610	EKV	C02-C01	2.47	1.55	1.51
5	B	605	EKV	C02-C01	2.40	1.55	1.51
5	B	605	EKV	SI1-C24	2.30	1.93	1.88
5	A	610	EKV	SI1-C24	2.27	1.93	1.88
5	B	605	EKV	C04-N03	2.19	1.49	1.46
5	B	605	EKV	C10-C09	2.15	1.55	1.52
5	A	610	EKV	SI1-C32	2.15	1.91	1.86
5	B	605	EKV	SI1-C32	2.09	1.91	1.86
5	A	610	EKV	C10-C09	2.02	1.55	1.52

All (6) bond angle outliers are listed below:

Mol	Chain	Res	Type	Atoms	Z	Observed(°)	Ideal(°)
5	A	610	EKV	C10-C09-C08	-3.60	105.09	109.76
5	B	605	EKV	C29-C24-C25	2.49	120.03	117.86
5	A	610	EKV	C29-C24-C25	2.48	120.02	117.86
6	A	611	FAD	C5A-C6A-N6A	2.37	123.92	120.31
6	B	606	FAD	C5A-C6A-N6A	2.27	123.77	120.31
5	A	610	EKV	C05-C04-N03	-2.02	109.85	114.08

There are no chirality outliers.

All (25) torsion outliers are listed below:

Mol	Chain	Res	Type	Atoms
2	A	601	GOL	C1-C2-C3-O3
2	B	601	GOL	O1-C1-C2-C3
5	A	610	EKV	N03-C04-C05-C06
5	A	610	EKV	C10-C09-O12-C13
5	A	610	EKV	C08-C09-O12-C13
5	A	610	EKV	C11-C09-O12-C13
2	A	602	GOL	O1-C1-C2-C3
2	A	603	GOL	O1-C1-C2-C3
2	A	601	GOL	O2-C2-C3-O3
6	B	606	FAD	O4B-C4B-C5B-O5B
6	B	606	FAD	C3B-C4B-C5B-O5B
2	A	603	GOL	O1-C1-C2-O2
2	B	601	GOL	O1-C1-C2-O2
6	A	611	FAD	O4B-C4B-C5B-O5B
4	A	608	CPS	C20-C22-C23-C24
4	A	606	CPS	C22-C23-C24-O1
4	B	603	CPS	C20-C22-C23-C24
4	A	606	CPS	C22-C23-C24-N1
5	B	605	EKV	C29-C24-SI1-C22
6	A	611	FAD	C3B-C4B-C5B-O5B
5	B	605	EKV	C15-C14-N03-C04
5	A	610	EKV	C29-C24-SI1-C22
4	B	603	CPS	C22-C23-C24-O1
4	B	603	CPS	C22-C23-C24-N1
2	A	602	GOL	O1-C1-C2-O2

There are no ring outliers.

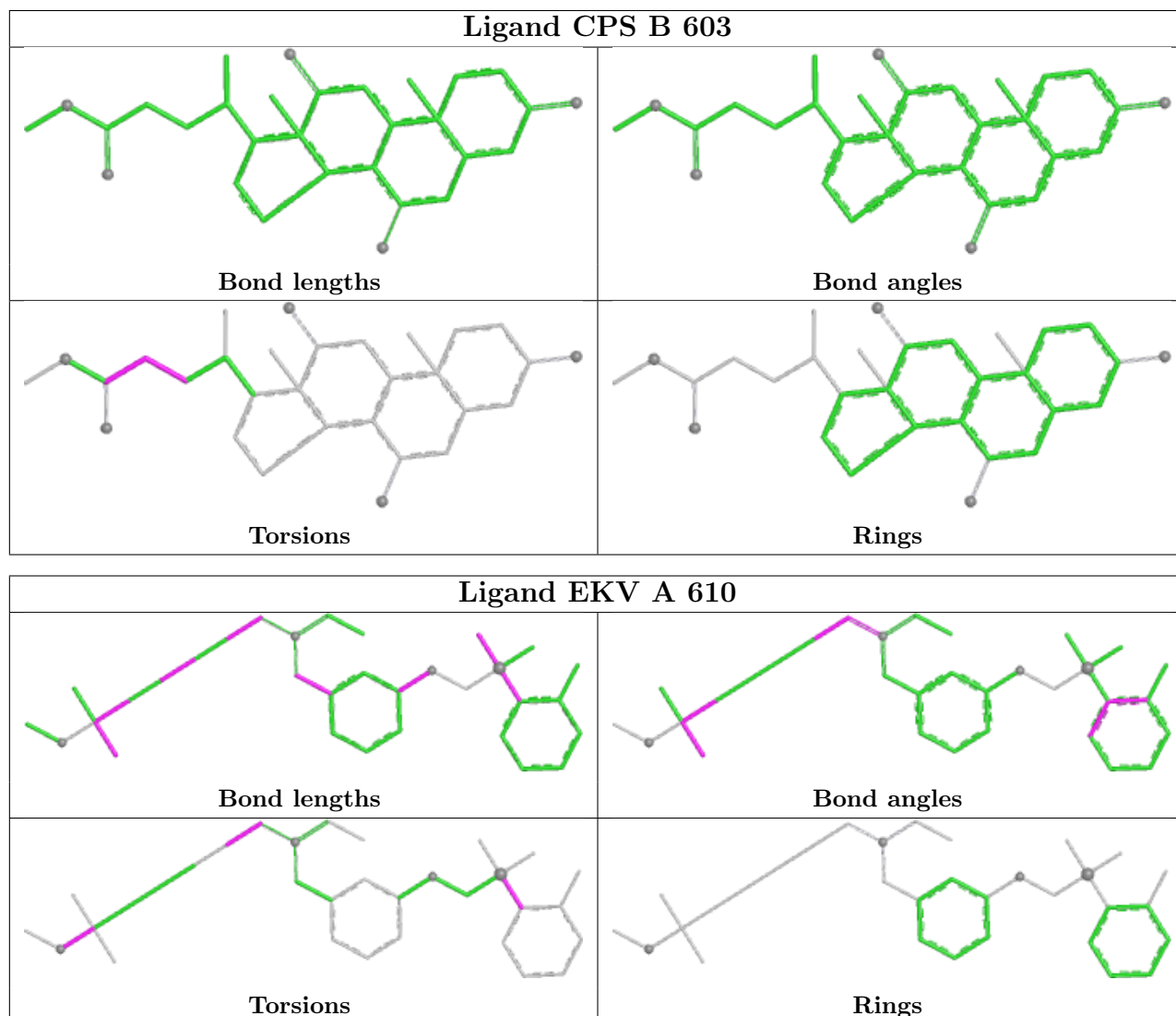
4 monomers are involved in 4 short contacts:

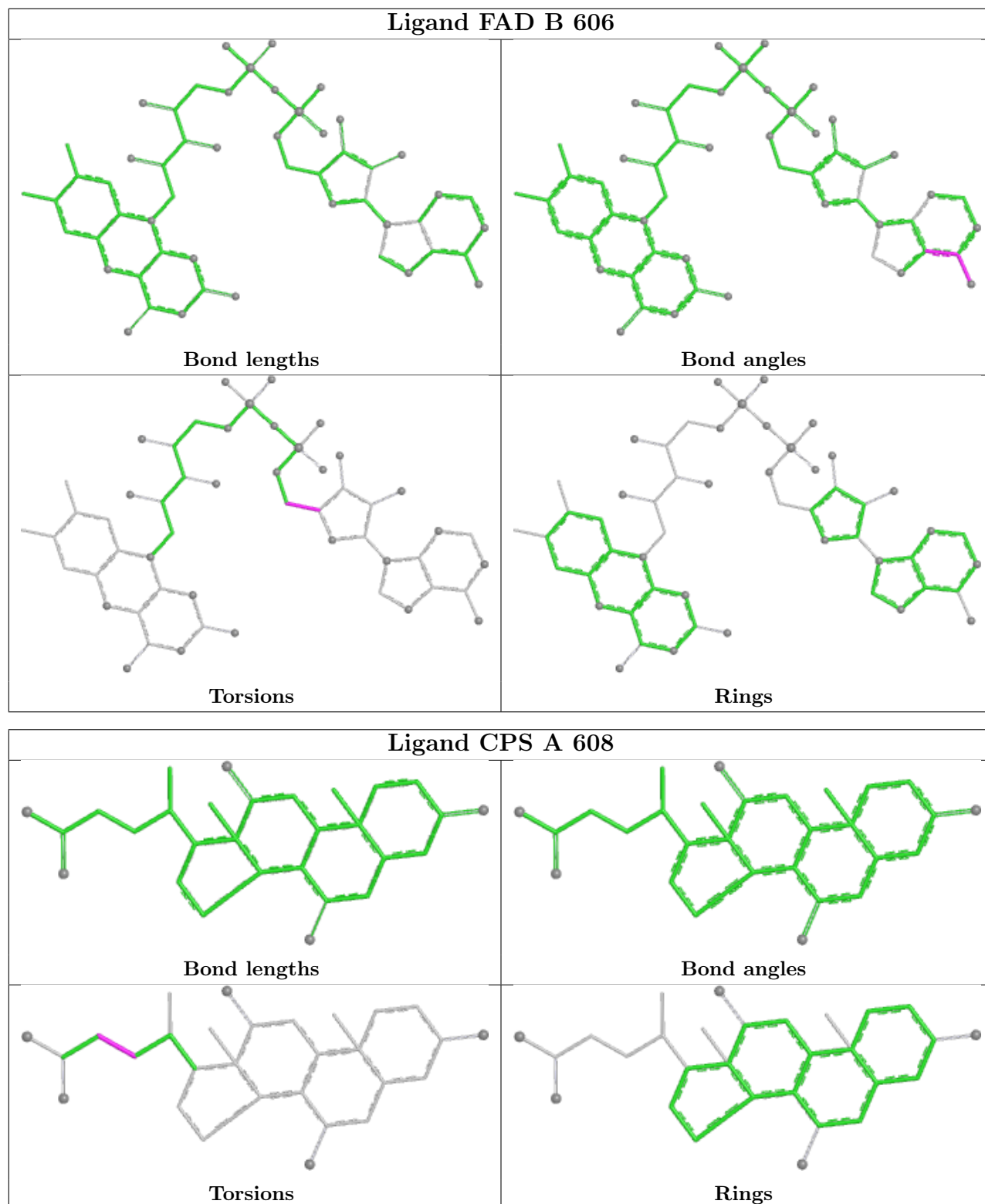
Mol	Chain	Res	Type	Clashes	Symm-Clashes
4	A	605	CPS	1	0
6	B	606	FAD	1	0
2	B	601	GOL	1	0
2	A	602	GOL	1	0

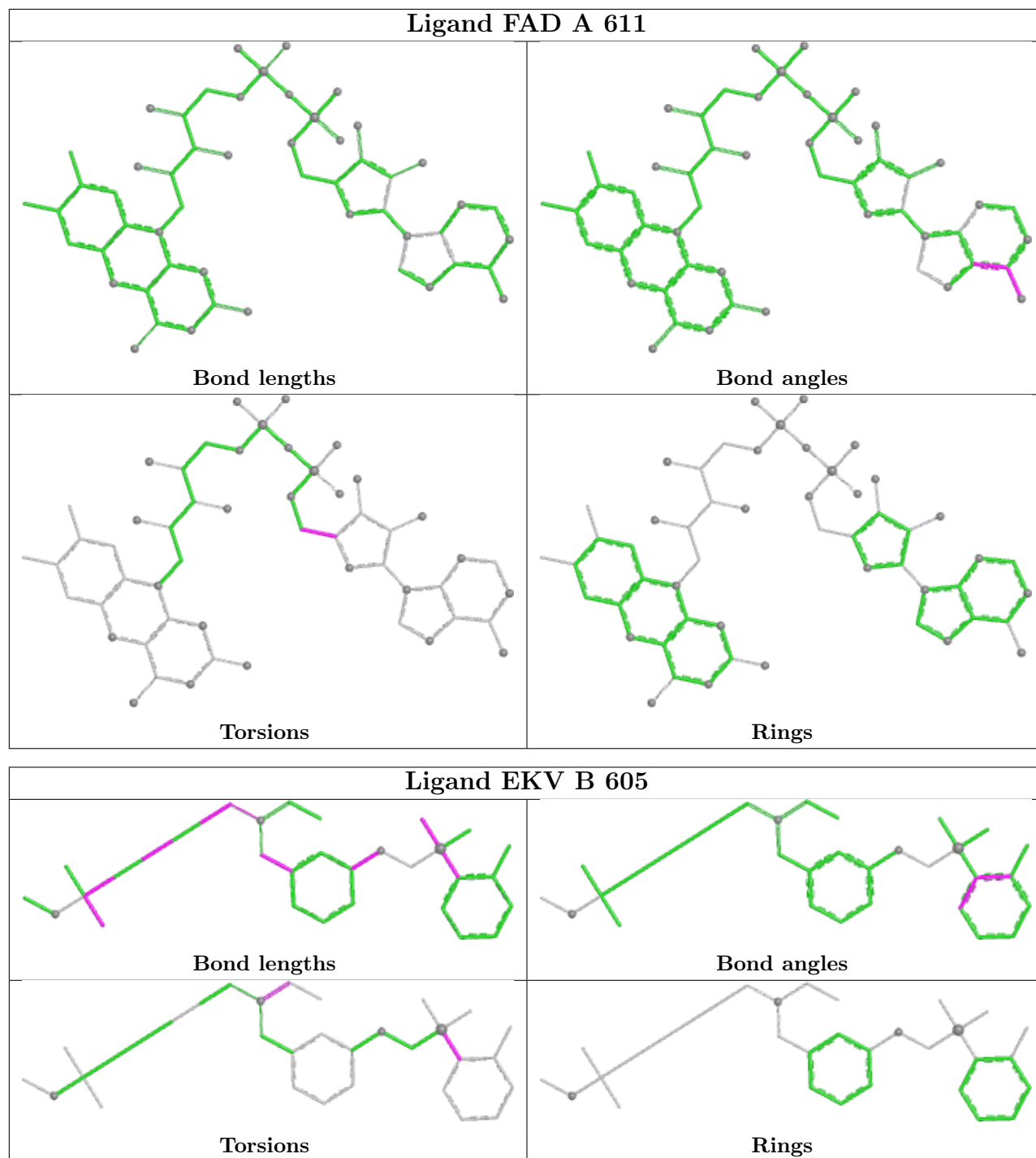
The following is a two-dimensional graphical depiction of Mogul quality analysis of bond lengths, bond angles, torsion angles, and ring geometry for all instances of the Ligand of Interest. In addition, ligands with molecular weight > 250 and outliers as shown on the validation Tables will also be included. For torsion angles, if less than 5% of the Mogul distribution of torsion angles is within 10 degrees of the torsion angle in question, then that torsion angle is considered an outlier.

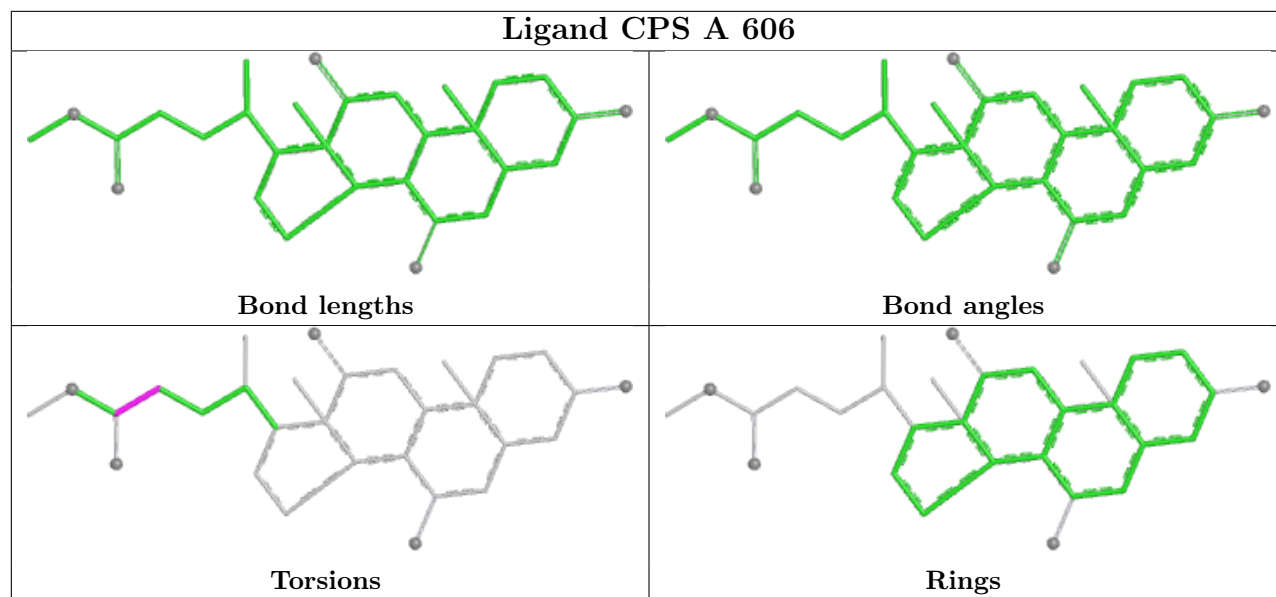


Any bond that is central to one or more torsion angles identified as an outlier by Mogul will be highlighted in the graph. For rings, the root-mean-square deviation (RMSD) between the ring in question and similar rings identified by Mogul is calculated over all ring torsion angles. If the average RMSD is greater than 60 degrees and the minimal RMSD between the ring in question and any Mogul-identified rings is also greater than 60 degrees, then that ring is considered an outlier. The outliers are highlighted in purple. The color gray indicates Mogul did not find sufficient equivalents in the CSD to analyse the geometry.









## 5.7 Other polymers [i](#)

There are no such residues in this entry.

## 5.8 Polymer linkage issues [i](#)

There are no chain breaks in this entry.

## 6 Fit of model and data [i](#)

### 6.1 Protein, DNA and RNA chains [i](#)

In the following table, the column labelled ‘#RSRZ > 2’ contains the number (and percentage) of RSRZ outliers, followed by percent RSRZ outliers for the chain as percentile scores relative to all X-ray entries and entries of similar resolution. The OWAB column contains the minimum, median, 95<sup>th</sup> percentile and maximum values of the occupancy-weighted average B-factor per residue. The column labelled ‘Q < 0.9’ lists the number of (and percentage) of residues with an average occupancy less than 0.9.

Mol	Chain	Analysed	<RSRZ>	#RSRZ>2	OWAB(Å <sup>2</sup> )	Q<0.9
1	A	450/458 (98%)	0.15	34 (7%) 13 18	28, 48, 88, 115	0
1	B	450/458 (98%)	0.12	18 (4%) 38 45	29, 50, 83, 109	0
All	All	900/916 (98%)	0.13	52 (5%) 23 29	28, 49, 85, 115	0

All (52) RSRZ outliers are listed below:

Mol	Chain	Res	Type	RSRZ
1	A	541	ILE	8.1
1	A	354	ARG	4.7
1	A	384	HIS	4.5
1	B	384	HIS	4.0
1	A	382	ASN	4.0
1	B	272	ASP	3.9
1	A	417	THR	3.8
1	B	257	ASP	3.7
1	B	382	ASN	3.4
1	B	540	TRP	3.4
1	A	416	LEU	3.4
1	A	473	LEU	3.4
1	A	313	ASN	3.3
1	A	293	LYS	3.3
1	B	258	ASP	3.1
1	A	399	LYS	3.0
1	A	545	ARG	3.0
1	A	269	GLU	2.9
1	A	257	ASP	2.8
1	A	470	ALA	2.8
1	A	415	PRO	2.8
1	B	269	GLU	2.8
1	B	354	ARG	2.8
1	A	542	THR	2.7

*Continued on next page...*

*Continued from previous page...*

Mol	Chain	Res	Type	RSRZ
1	A	420	GLY	2.7
1	A	469	LEU	2.6
1	B	270	THR	2.6
1	B	416	LEU	2.6
1	B	256	GLU	2.5
1	B	545	ARG	2.5
1	B	571	TYR	2.5
1	B	473	LEU	2.5
1	A	122	ASN	2.5
1	A	423	VAL	2.5
1	A	383	SER	2.5
1	A	381	ASP	2.5
1	A	571	TYR	2.5
1	A	466	VAL	2.4
1	B	293	LYS	2.4
1	B	122	ASN	2.4
1	A	418	GLY	2.4
1	A	317	PHE	2.3
1	B	541	ILE	2.3
1	B	466	VAL	2.2
1	A	539	PRO	2.2
1	A	270	THR	2.1
1	A	351	GLU	2.1
1	A	355	ASN	2.1
1	A	353	PRO	2.1
1	A	258	ASP	2.0
1	A	540	TRP	2.0
1	A	358	GLU	2.0

## 6.2 Non-standard residues in protein, DNA, RNA chains [i](#)

There are no non-standard protein/DNA/RNA residues in this entry.

## 6.3 Carbohydrates [i](#)

There are no monosaccharides in this entry.

## 6.4 Ligands [i](#)

In the following table, the Atoms column lists the number of modelled atoms in the group and the number defined in the chemical component dictionary. The B-factors column lists the minimum,

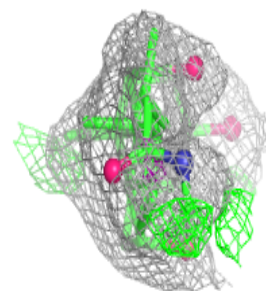
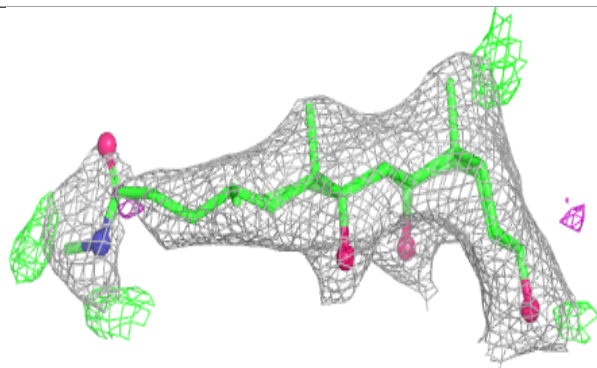
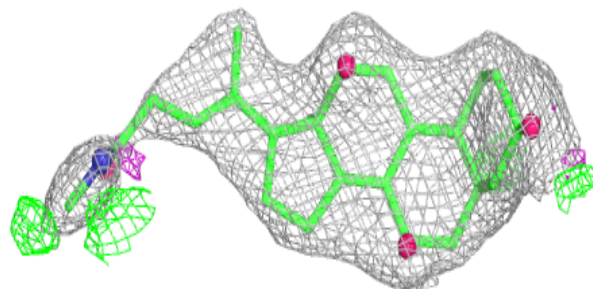
median, 95<sup>th</sup> percentile and maximum values of B factors of atoms in the group. The column labelled 'Q< 0.9' lists the number of atoms with occupancy less than 0.9.

Mol	Type	Chain	Res	Atoms	RSCC	RSR	B-factors(Å <sup>2</sup> )	Q<0.9
2	GOL	B	601	6/6	0.72	0.24	60,70,76,81	0
2	GOL	A	603	6/6	0.85	0.27	82,82,92,92	0
2	GOL	A	602	6/6	0.85	0.27	59,75,83,84	0
4	CPS	B	604	26/42	0.86	0.25	64,75,81,83	0
4	CPS	B	603	30/42	0.91	0.18	61,74,95,105	0
3	SO4	A	604	5/5	0.91	0.19	67,69,78,81	5
4	CPS	A	609	25/42	0.92	0.16	39,54,71,75	0
2	GOL	A	601	6/6	0.92	0.13	54,61,66,67	0
4	CPS	A	608	29/42	0.92	0.26	60,68,96,103	0
4	CPS	A	607	26/42	0.93	0.30	64,78,87,90	0
4	CPS	A	606	30/42	0.94	0.13	31,41,79,88	0
3	SO4	B	602	5/5	0.94	0.21	78,81,103,107	0
6	FAD	A	611	53/53	0.95	0.16	36,43,54,58	0
5	EKV	A	610	32/32	0.96	0.25	31,41,56,61	0
5	EKV	B	605	32/32	0.96	0.19	27,41,51,60	0
4	CPS	A	605	31/42	0.96	0.11	28,38,83,109	0
6	FAD	B	606	53/53	0.96	0.14	35,44,67,69	0

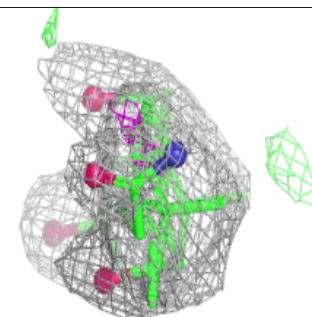
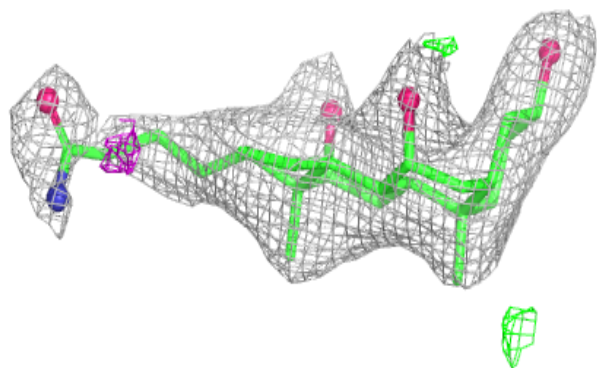
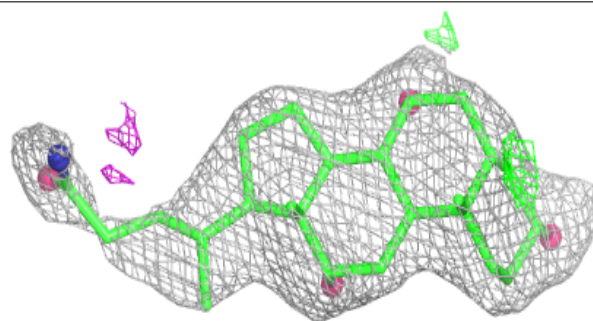
The following is a graphical depiction of the model fit to experimental electron density of all instances of the Ligand of Interest. In addition, ligands with molecular weight > 250 and outliers as shown on the geometry validation Tables will also be included. Each fit is shown from different orientation to approximate a three-dimensional view.

**Electron density around CPS B 603:**

$2mF_o-DF_c$  (at 0.7 rmsd) in gray  
 $mF_o-DF_c$  (at 3 rmsd) in purple (negative)  
and green (positive)

**Electron density around CPS A 608:**

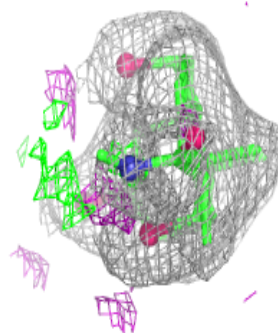
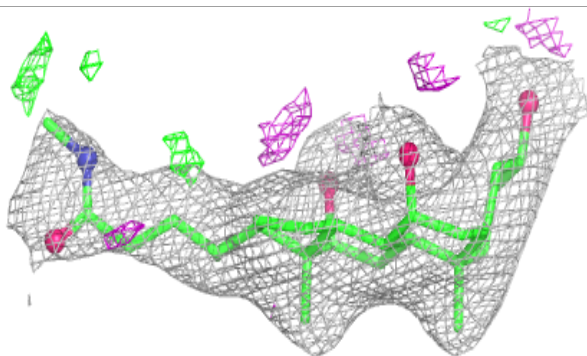
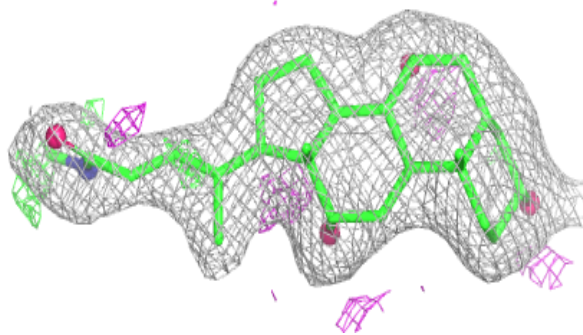
$2mF_o-DF_c$  (at 0.7 rmsd) in gray  
 $mF_o-DF_c$  (at 3 rmsd) in purple (negative)  
and green (positive)



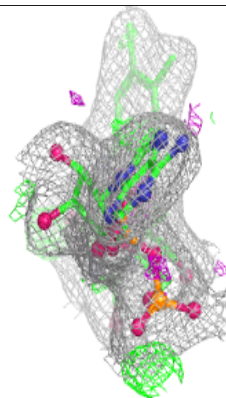
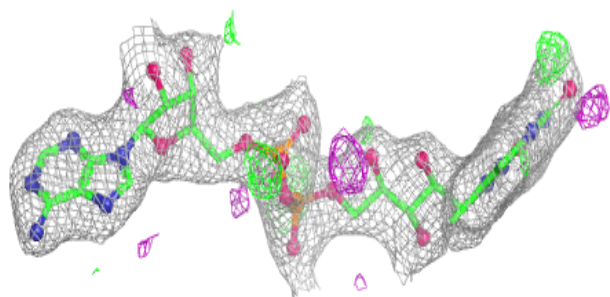
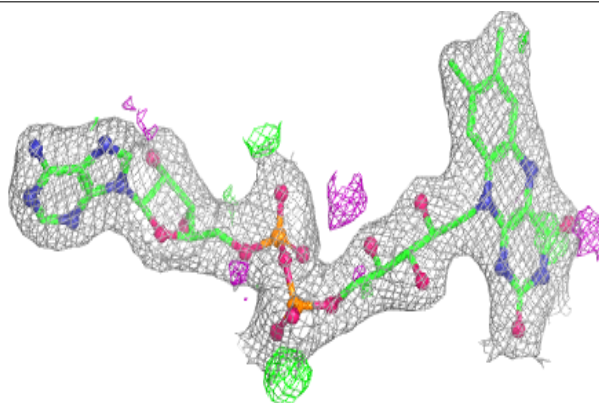


**Electron density around CPS A 606:**

$2mF_o-DF_c$  (at 0.7 rmsd) in gray  
 $mF_o-DF_c$  (at 3 rmsd) in purple (negative)  
and green (positive)

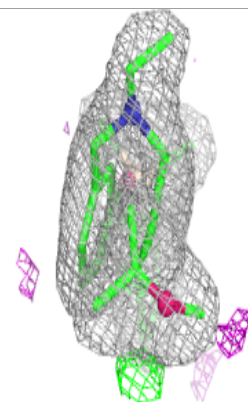
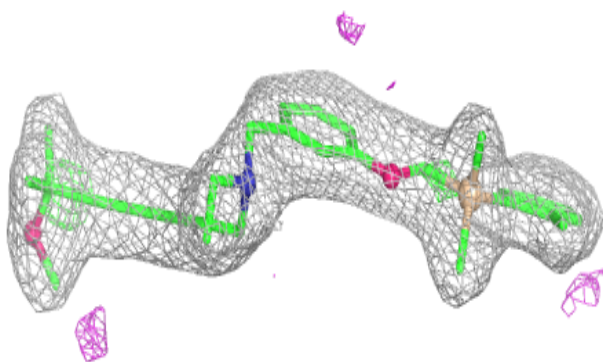
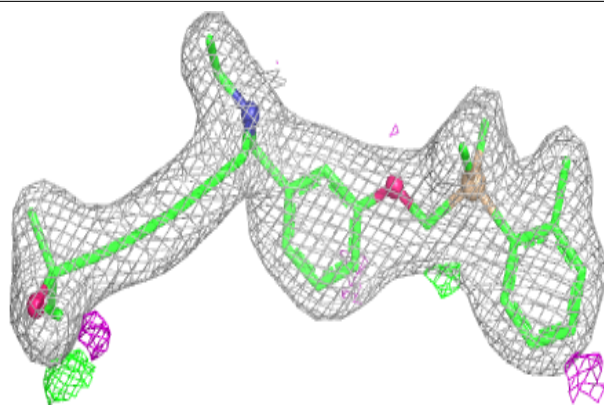
**Electron density around FAD A 611:**

$2mF_o-DF_c$  (at 0.7 rmsd) in gray  
 $mF_o-DF_c$  (at 3 rmsd) in purple (negative)  
and green (positive)

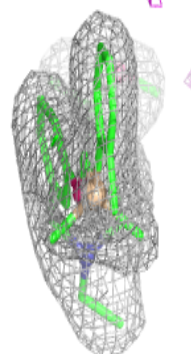
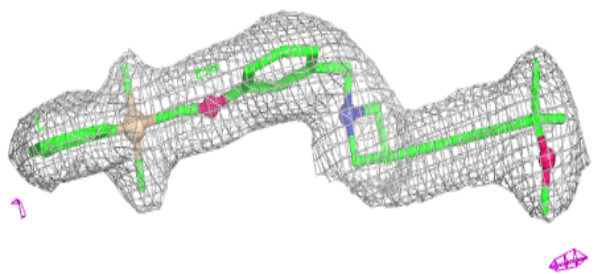
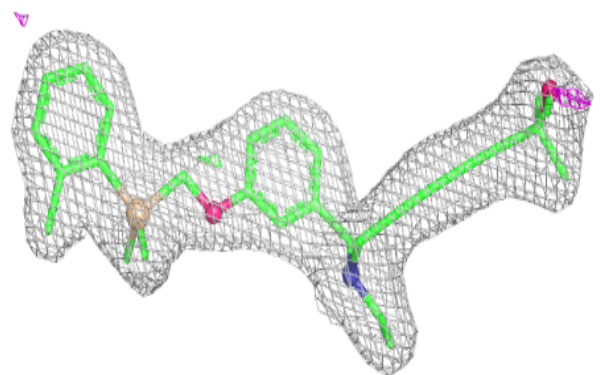


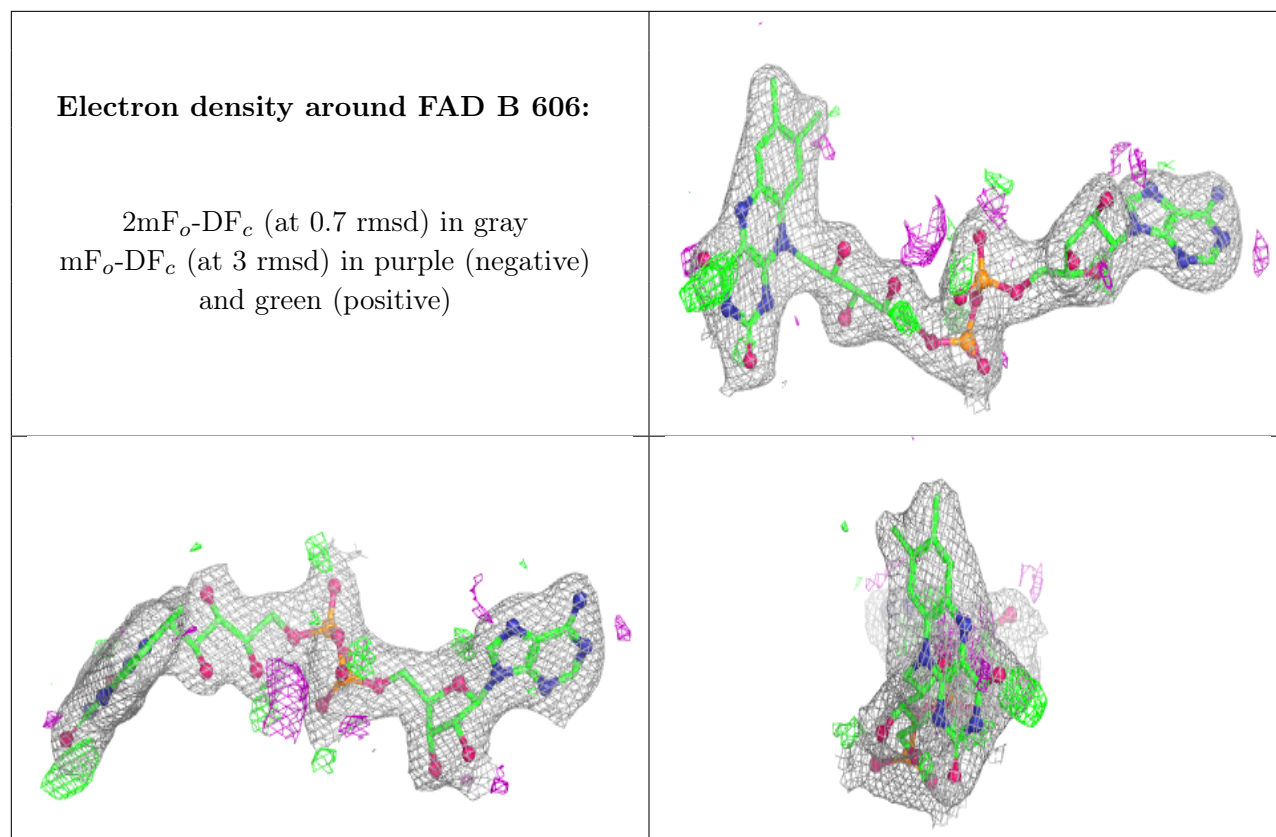
**Electron density around EKV A 610:**

$2mF_o-DF_c$  (at 0.7 rmsd) in gray  
 $mF_o-DF_c$  (at 3 rmsd) in purple (negative)  
and green (positive)

**Electron density around EKV B 605:**

$2mF_o-DF_c$  (at 0.7 rmsd) in gray  
 $mF_o-DF_c$  (at 3 rmsd) in purple (negative)  
and green (positive)





## 6.5 Other polymers [i](#)

There are no such residues in this entry.