



Full wwPDB EM Validation Report ⓘ

Jul 15, 2024 – 06:03 am BST

PDB ID : 8C60
EMDB ID : EMD-16449
Title : Cryo-EM structure of the human SIN3B full-length complex at 3.4 Angstrom resolution
Authors : Alfieri, C.; Wan, S.M.; Muhammad, R.
Deposited on : 2023-01-10
Resolution : 3.40 Å(reported)

This is a Full wwPDB EM Validation Report for a publicly released PDB entry.

We welcome your comments at validation@mail.wwpdb.org

A user guide is available at

<https://www.wwpdb.org/validation/2017/EMValidationReportHelp>

with specific help available everywhere you see the ⓘ symbol.

The types of validation reports are described at

<http://www.wwpdb.org/validation/2017/FAQs#types>.

The following versions of software and data (see [references ⓘ](#)) were used in the production of this report:

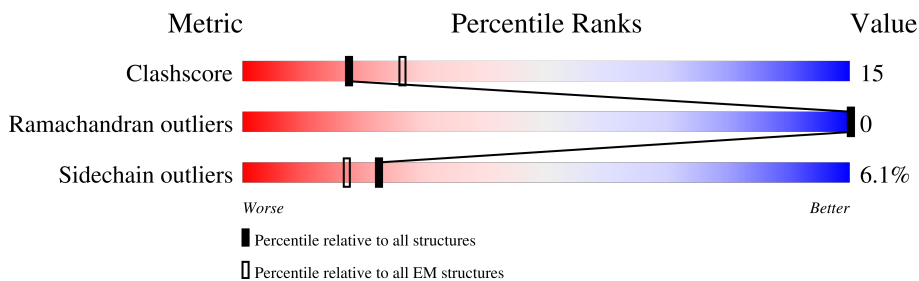
EMDB validation analysis : 0.0.1.dev92
MolProbity : 4.02b-467
Percentile statistics : 20191225.v01 (using entries in the PDB archive December 25th 2019)
MapQ : 1.9.13
Ideal geometry (proteins) : Engh & Huber (2001)
Ideal geometry (DNA, RNA) : Parkinson et al. (1996)
Validation Pipeline (wwPDB-VP) : 2.37.1

1 Overall quality at a glance

The following experimental techniques were used to determine the structure:
ELECTRON MICROSCOPY

The reported resolution of this entry is 3.40 Å.

Percentile scores (ranging between 0-100) for global validation metrics of the entry are shown in the following graphic. The table shows the number of entries on which the scores are based.



Metric	Whole archive (#Entries)	EM structures (#Entries)
Clashscore	158937	4297
Ramachandran outliers	154571	4023
Sidechain outliers	154315	3826

The table below summarises the geometric issues observed across the polymeric chains and their fit to the map. The red, orange, yellow and green segments of the bar indicate the fraction of residues that contain outliers for ≥ 3 , 2, 1 and 0 types of geometric quality criteria respectively. A grey segment represents the fraction of residues that are not modelled. The numeric value for each fraction is indicated below the corresponding segment, with a dot representing fractions $\leq 5\%$. The upper red bar (where present) indicates the fraction of residues that have poor fit to the EM map (all-atom inclusion $< 40\%$). The numeric value is given above the bar.

Mol	Chain	Length	Quality of chain
1	A	1130	
2	B	488	
3	C	1004	
4	D	362	

2 Entry composition [i](#)

There are 6 unique types of molecules in this entry. The entry contains 10393 atoms, of which 0 are hydrogens and 0 are deuteriums.

In the tables below, the AltConf column contains the number of residues with at least one atom in alternate conformation and the Trace column contains the number of residues modelled with at most 2 atoms.

- Molecule 1 is a protein called Isoform 2 of Paired amphipathic helix protein Sin3b.

Mol	Chain	Residues	Atoms					AltConf	Trace
			Total	C	N	O	S		
1	A	536	4403	2803	764	818	18	0	0

- Molecule 2 is a protein called Histone deacetylase 2.

Mol	Chain	Residues	Atoms					AltConf	Trace
			Total	C	N	O	S		
2	B	368	2956	1889	501	542	24	5	0

- Molecule 3 is a protein called PHD finger protein 12.

Mol	Chain	Residues	Atoms					AltConf	Trace
			Total	C	N	O	S		
3	C	213	1692	1057	309	300	26	0	0

- Molecule 4 is a protein called Mortality factor 4-like protein 1.

Mol	Chain	Residues	Atoms					AltConf	Trace
			Total	C	N	O	S		
4	D	163	1335	869	217	246	3	0	0

- Molecule 5 is ZINC ION (three-letter code: ZN) (formula: Zn) (labeled as "Ligand of Interest" by depositor).

Mol	Chain	Residues	Atoms		AltConf
5	B	1	Total	Zn	0
			1	1	
5	C	4	Total	Zn	0
			4	4	

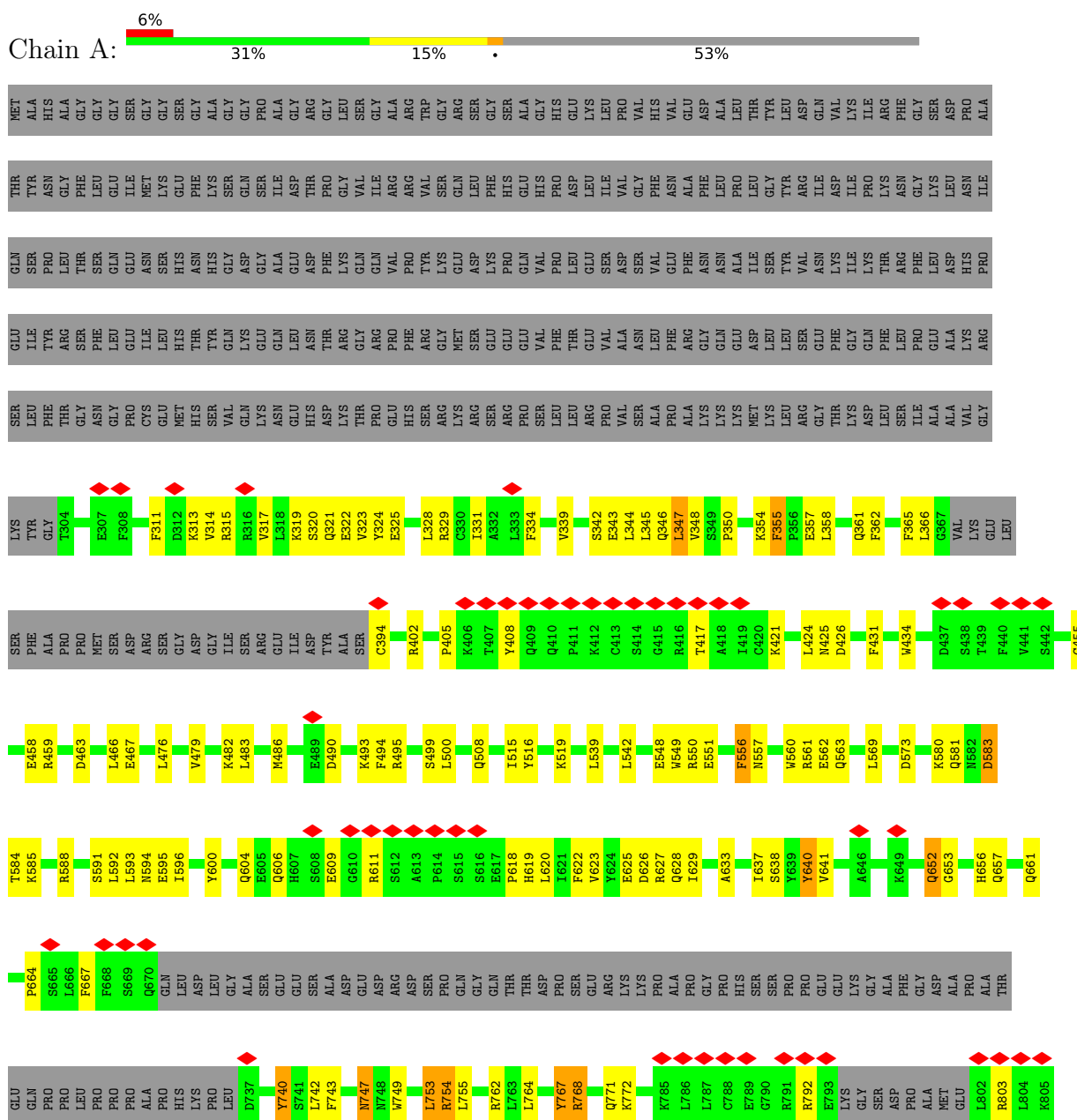
- Molecule 6 is CALCIUM ION (three-letter code: CA) (formula: Ca) (labeled as "Ligand of Interest" by depositor).

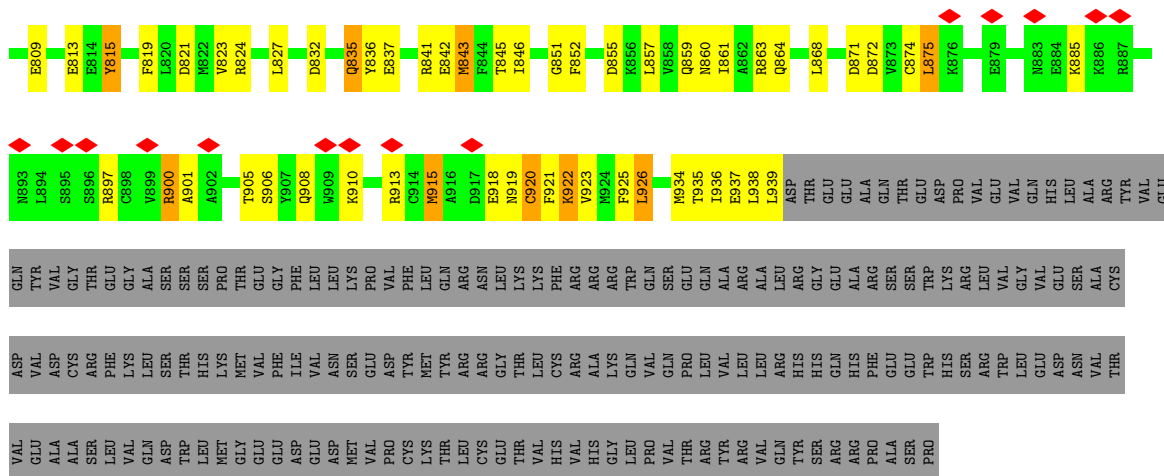
Mol	Chain	Residues	Atoms		AltConf
6	B	2	Total 2	Ca 2	0

3 Residue-property plots

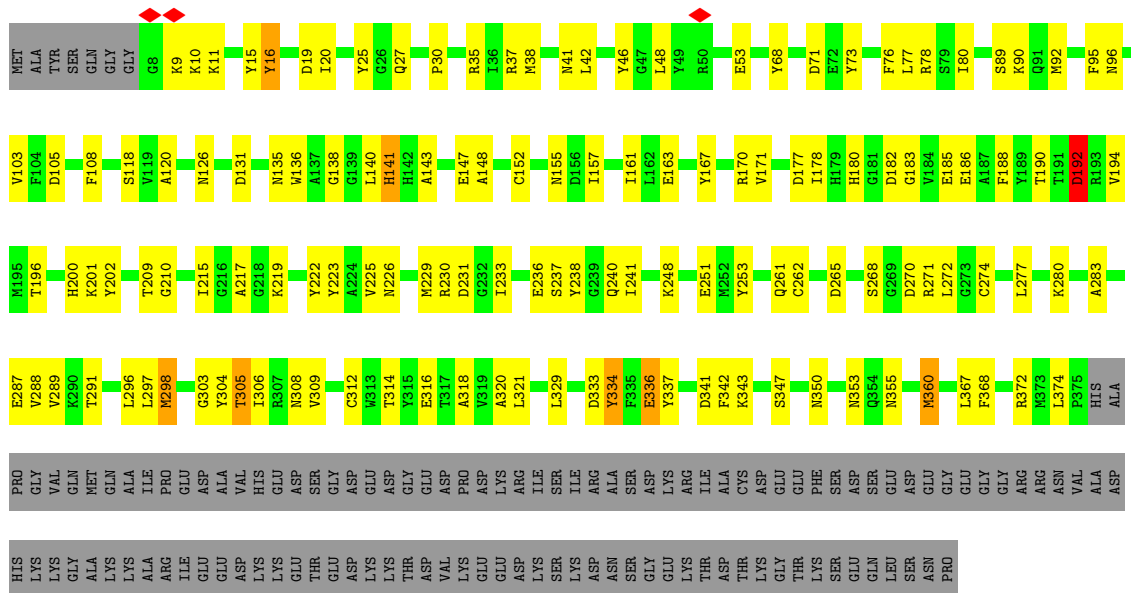
These plots are drawn for all protein, RNA, DNA and oligosaccharide chains in the entry. The first graphic for a chain summarises the proportions of the various outlier classes displayed in the second graphic. The second graphic shows the sequence view annotated by issues in geometry and atom inclusion in map density. Residues are color-coded according to the number of geometric quality criteria for which they contain at least one outlier: green = 0, yellow = 1, orange = 2 and red = 3 or more. A red diamond above a residue indicates a poor fit to the EM map for this residue (all-atom inclusion < 40%). Stretches of 2 or more consecutive residues without any outlier are shown as a green connector. Residues present in the sample, but not in the model, are shown in grey.

- Molecule 1: Isoform 2 of Paired amphipathic helix protein Sin3b

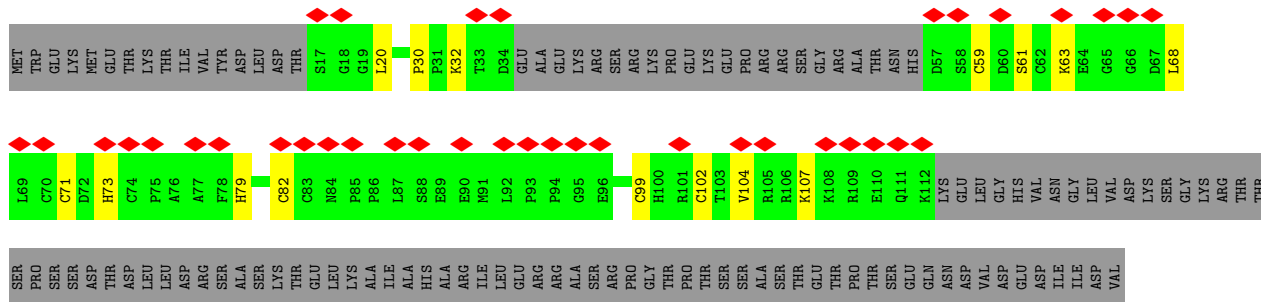


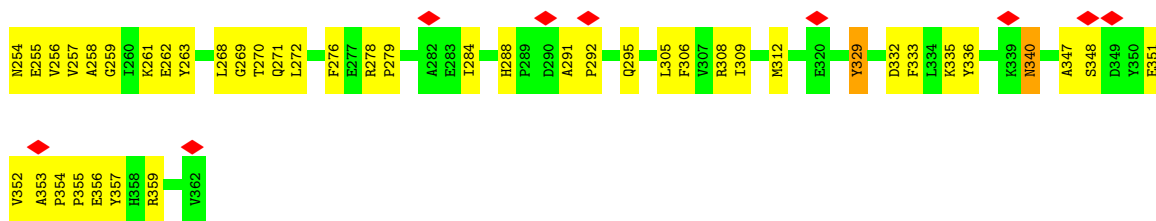


• Molecule 2: Histone deacetylase 2



• Molecule 3: PHD finger protein 12





4 Experimental information

Property	Value	Source
EM reconstruction method	SINGLE PARTICLE	Depositor
Imposed symmetry	POINT, Not provided	
Number of particles used	38352	Depositor
Resolution determination method	FSC 0.143 CUT-OFF	Depositor
CTF correction method	PHASE FLIPPING AND AMPLITUDE CORRECTION	Depositor
Microscope	TFS GLACIOS	Depositor
Voltage (kV)	200	Depositor
Electron dose ($e^-/\text{\AA}^2$)	60	Depositor
Minimum defocus (nm)	600	Depositor
Maximum defocus (nm)	1600	Depositor
Magnification	Not provided	
Image detector	FEI FALCON IV (4k x 4k)	Depositor
Maximum map value	1.850	Depositor
Minimum map value	-0.012	Depositor
Average map value	0.002	Depositor
Map value standard deviation	0.032	Depositor
Recommended contour level	0.035	Depositor
Map size (\AA)	226.79999, 226.79999, 226.79999	wwPDB
Map dimensions	200, 200, 200	wwPDB
Map angles ($^\circ$)	90.0, 90.0, 90.0	wwPDB
Pixel spacing (\AA)	1.134, 1.134, 1.134	Depositor

5 Model quality [i](#)

5.1 Standard geometry [i](#)

Bond lengths and bond angles in the following residue types are not validated in this section: ZN, CA

The Z score for a bond length (or angle) is the number of standard deviations the observed value is removed from the expected value. A bond length (or angle) with $|Z| > 5$ is considered an outlier worth inspection. RMSZ is the root-mean-square of all Z scores of the bond lengths (or angles).

Mol	Chain	Bond lengths		Bond angles	
		RMSZ	# Z >5	RMSZ	# Z >5
1	A	0.27	0/4490	0.57	4/6047 (0.1%)
2	B	0.28	0/3033	0.51	2/4095 (0.0%)
3	C	0.26	0/1733	0.56	1/2347 (0.0%)
4	D	0.30	0/1371	0.57	0/1861
All	All	0.28	0/10627	0.55	7/14350 (0.0%)

There are no bond length outliers.

All (7) bond angle outliers are listed below:

Mol	Chain	Res	Type	Atoms	Z	Observed(°)	Ideal(°)
1	A	347	LEU	CA-CB-CG	7.51	132.58	115.30
1	A	926	LEU	CA-CB-CG	5.83	128.70	115.30
2	B	131	ASP	CB-CG-OD1	5.30	123.07	118.30
2	B	192	ASP	CB-CG-OD1	5.21	122.99	118.30
1	A	664	PRO	CA-N-CD	-5.14	104.30	111.50
1	A	753	LEU	CA-CB-CG	5.04	126.90	115.30
3	C	213	LEU	CA-CB-CG	5.02	126.84	115.30

There are no chirality outliers.

There are no planarity outliers.

5.2 Too-close contacts [i](#)

In the following table, the Non-H and H(model) columns list the number of non-hydrogen atoms and hydrogen atoms in the chain respectively. The H(added) column lists the number of hydrogen atoms added and optimized by MolProbity. The Clashes column lists the number of clashes within the asymmetric unit, whereas Symm-Clashes lists symmetry-related clashes.

Mol	Chain	Non-H	H(model)	H(added)	Clashes	Symm-Clashes
1	A	4403	0	4352	144	0
2	B	2956	0	2851	94	0
3	C	1692	0	1659	48	0
4	D	1335	0	1324	56	0
5	B	1	0	0	0	0
5	C	4	0	0	0	0
6	B	2	0	0	0	0
All	All	10393	0	10186	310	0

The all-atom clashscore is defined as the number of clashes found per 1000 atoms (including hydrogen atoms). The all-atom clashscore for this structure is 15.

All (310) close contacts within the same asymmetric unit are listed below, sorted by their clash magnitude.

Atom-1	Atom-2	Interatomic distance (Å)	Clash overlap (Å)
3:C:348:HIS:HA	3:C:351:LYS:HE3	1.30	1.11
1:A:908:GLN:HE22	1:A:939:LEU:HD13	1.48	0.78
4:D:228:ASN:HD22	4:D:295:GLN:HG3	1.49	0.76
1:A:600:TYR:HB2	1:A:938:LEU:HD13	1.67	0.75
2:B:96:ASN:ND2	2:B:148:ALA:O	2.18	0.75
1:A:593:LEU:HD11	1:A:747:ASN:HD21	1.53	0.74
2:B:200:HIS:HE1	2:B:226:ASN:HB3	1.54	0.72
3:C:213:LEU:HB3	4:D:263:TYR:CE2	2.26	0.70
1:A:355:PHE:HB2	1:A:358:LEU:HB2	1.74	0.70
3:C:61:SER:HB2	3:C:223:THR:HA	1.73	0.69
4:D:219:GLN:HG2	4:D:352:VAL:HG12	1.74	0.69
1:A:315:ARG:NH1	1:A:321:GLN:OE1	2.27	0.68
2:B:73:TYR:HA	2:B:95:PHE:HE2	1.58	0.68
4:D:236:TYR:OH	4:D:333:PHE:HA	1.94	0.68
1:A:322:GLU:N	1:A:322:GLU:OE2	2.27	0.67
3:C:209:PRO:O	3:C:213:LEU:HD22	1.94	0.67
4:D:213:LEU:HA	4:D:217:GLN:HB2	1.76	0.67
1:A:633:ALA:O	1:A:637:ILE:HG13	1.95	0.67
2:B:190:THR:HG22	2:B:217:ALA:HB3	1.76	0.66
1:A:431:PHE:HD1	4:D:355:PRO:HD3	1.60	0.66
2:B:201:LYS:NZ	2:B:274:CYS:SG	2.65	0.66
1:A:402:ARG:HG3	4:D:352:VAL:HG21	1.76	0.66
2:B:147:GLU:OE1	4:D:359:ARG:NH2	2.28	0.66
1:A:600:TYR:HA	1:A:619:HIS:HE1	1.59	0.65
1:A:315:ARG:NH2	1:A:320:SER:O	2.27	0.65
4:D:236:TYR:HE1	4:D:336:TYR:CD2	2.14	0.65
1:A:824:ARG:HA	1:A:827:LEU:HD12	1.77	0.65

Continued on next page...

Continued from previous page...

Atom-1	Atom-2	Interatomic distance (Å)	Clash overlap (Å)
1:A:740:TYR:HE1	1:A:742:LEU:HG	1.61	0.64
1:A:855:ASP:O	1:A:859:GLN:HG2	1.98	0.63
1:A:657:GLN:OE1	1:A:661:GLN:NE2	2.31	0.63
1:A:329:ARG:HD3	3:C:341:PHE:HB3	1.79	0.63
1:A:334:PHE:HA	1:A:339:VAL:HB	1.81	0.62
1:A:343:GLU:O	1:A:347:LEU:HD12	1.99	0.62
1:A:573:ASP:OD1	2:B:350:ASN:ND2	2.31	0.62
1:A:922:LYS:HE3	1:A:937:GLU:HG2	1.80	0.62
1:A:325:GLU:O	1:A:329:ARG:HG3	1.99	0.62
2:B:355:ASN:HB3	2:B:360:MET:CE	2.29	0.62
1:A:792:ARG:O	2:B:9:LYS:NZ	2.34	0.61
2:B:53:GLU:N	2:B:53:GLU:OE2	2.33	0.61
1:A:394:CYS:N	4:D:348:SER:O	2.34	0.60
3:C:289:CYS:SG	3:C:315:CYS:HB3	2.40	0.60
2:B:80:ILE:HG12	2:B:103:VAL:HG21	1.82	0.60
1:A:455:CYS:SG	1:A:563:GLN:NE2	2.74	0.60
1:A:767:TYR:HE1	1:A:771:GLN:HE21	1.49	0.60
2:B:182:ASP:OD1	2:B:183:GLY:N	2.35	0.60
2:B:35:ARG:HB3	2:B:306:ILE:HD12	1.83	0.59
4:D:204:LYS:HD3	4:D:205:PRO:HD3	1.85	0.59
1:A:431:PHE:CD1	4:D:355:PRO:HD3	2.37	0.58
1:A:600:TYR:HA	1:A:619:HIS:CE1	2.37	0.58
2:B:185:GLU:HA	2:B:196:THR:HG21	1.85	0.58
1:A:424:LEU:HD21	2:B:68:TYR:HD1	1.67	0.58
1:A:637:ILE:HD13	1:A:861:ILE:HG21	1.85	0.58
2:B:16:TYR:HE2	2:B:20:ILE:HG22	1.68	0.58
2:B:15:TYR:HE2	2:B:120:ALA:HB3	1.69	0.58
1:A:819:PHE:O	1:A:823:VAL:HG23	2.04	0.57
3:C:347:GLN:O	3:C:351:LYS:HG3	2.04	0.57
2:B:236:GLU:OE1	2:B:236:GLU:N	2.31	0.57
3:C:210:PHE:CE2	4:D:256:VAL:HA	2.39	0.57
2:B:210:GLY:HA2	2:B:226:ASN:HD22	1.69	0.57
2:B:35:ARG:HD2	2:B:309:VAL:HG11	1.86	0.57
1:A:494:PHE:O	1:A:495:ARG:NH1	2.32	0.56
1:A:749:TRP:NE1	1:A:874:CYS:SG	2.78	0.56
1:A:764:LEU:O	1:A:768:ARG:HD2	2.05	0.56
4:D:206:TRP:HH2	4:D:347:ALA:HB2	1.70	0.56
1:A:311:PHE:CE2	3:C:352:VAL:HG12	2.41	0.56
2:B:229:MET:HE2	2:B:241:ILE:HD11	1.86	0.56
3:C:210:PHE:HE2	4:D:256:VAL:HA	1.70	0.56
2:B:305:THR:O	2:B:309:VAL:HG23	2.06	0.56

Continued on next page...

Continued from previous page...

Atom-1	Atom-2	Interatomic distance (Å)	Clash overlap (Å)
2:B:355:ASN:HB3	2:B:360:MET:HE3	1.87	0.56
1:A:365:PHE:CE2	3:C:355:LEU:HD22	2.41	0.56
1:A:821:ASP:OD1	1:A:824:ARG:NH1	2.39	0.56
3:C:211:GLU:O	3:C:214:ILE:HG22	2.05	0.55
1:A:619:HIS:HB2	1:A:937:GLU:HA	1.88	0.55
1:A:345:LEU:HA	1:A:348:VAL:HG12	1.88	0.55
3:C:205:GLN:HE22	4:D:255:GLU:HG3	1.72	0.55
3:C:330:THR:OG1	3:C:333:ASN:OD1	2.25	0.55
2:B:241:ILE:HG21	2:B:360:MET:HG3	1.88	0.55
1:A:320:SER:HB2	1:A:322:GLU:OE2	2.06	0.55
4:D:340:ASN:H	4:D:340:ASN:HD22	1.54	0.55
3:C:231:LEU:HD22	4:D:204:LYS:HE2	1.88	0.55
1:A:405:PRO:HG3	4:D:351:GLU:HB2	1.89	0.54
2:B:341:ASP:OD2	2:B:343:LYS:N	2.37	0.54
1:A:594:ASN:HB3	3:C:266:LEU:HD11	1.89	0.54
1:A:325:GLU:OE2	3:C:347:GLN:NE2	2.40	0.54
1:A:515:ILE:HG13	1:A:542:LEU:HD23	1.89	0.54
2:B:140:LEU:HB3	2:B:152:CYS:HB3	1.89	0.54
2:B:219:LYS:HB2	2:B:219:LYS:NZ	2.23	0.54
1:A:311:PHE:HE2	3:C:352:VAL:HG12	1.71	0.54
4:D:220:LEU:HD23	4:D:353:ALA:HB2	1.90	0.54
1:A:365:PHE:CZ	3:C:355:LEU:HD22	2.43	0.54
1:A:815:TYR:CE2	1:A:843:MET:HB3	2.43	0.53
1:A:314:VAL:HA	1:A:317:VAL:HG12	1.91	0.53
1:A:486:MET:SD	1:A:486:MET:N	2.80	0.53
2:B:225:VAL:HG23	2:B:367:LEU:HD22	1.90	0.53
1:A:315:ARG:NH2	1:A:324:TYR:HB2	2.23	0.53
2:B:368:PHE:O	2:B:372:ARG:HG2	2.08	0.53
2:B:318:ALA:HA	2:B:321:LEU:HD12	1.90	0.53
2:B:89:SER:O	2:B:92:MET:HB3	2.08	0.53
1:A:809:GLU:O	1:A:813:GLU:HG2	2.08	0.53
1:A:365:PHE:CE1	3:C:359:HIS:HB2	2.45	0.52
1:A:548:GLU:O	1:A:551:GLU:HG3	2.08	0.52
2:B:46:TYR:HB3	2:B:48:LEU:HD13	1.91	0.52
4:D:332:ASP:O	4:D:335:LYS:HG2	2.09	0.52
4:D:258:ALA:HA	4:D:261:LYS:HG3	1.92	0.52
1:A:476:LEU:HA	1:A:479:VAL:HG12	1.91	0.52
1:A:580:LYS:HZ2	1:A:852:PHE:HB3	1.73	0.52
2:B:236:GLU:O	2:B:240[A]:GLN:HG3	2.10	0.52
3:C:73:HIS:ND1	3:C:102:CYS:SG	2.83	0.52
1:A:845:THR:HG23	1:A:846:ILE:H	1.76	0.51

Continued on next page...

Continued from previous page...

Atom-1	Atom-2	Interatomic distance (Å)	Clash overlap (Å)
2:B:265:ASP:HB3	2:B:303:GLY:H	1.75	0.51
1:A:467:GLU:HG3	2:B:37:ARG:NH1	2.26	0.51
2:B:200:HIS:CE1	2:B:226:ASN:HB3	2.42	0.51
1:A:357:GLU:HG2	1:A:358:LEU:N	2.24	0.51
1:A:768:ARG:HG2	1:A:768:ARG:HH11	1.76	0.51
4:D:312:MET:SD	4:D:312:MET:N	2.83	0.51
1:A:425:ASN:OD1	1:A:426:ASP:N	2.44	0.51
4:D:292:PRO:HB2	4:D:295:GLN:HB2	1.93	0.51
1:A:585:LYS:HE2	3:C:264:ASN:HB2	1.93	0.51
1:A:596:ILE:HG23	1:A:938:LEU:HD21	1.93	0.51
4:D:204:LYS:N	4:D:205:PRO:HD2	2.26	0.51
3:C:326:GLN:O	3:C:334:ARG:NH1	2.43	0.51
1:A:653:GLY:O	1:A:657:GLN:HG2	2.10	0.50
2:B:223:TYR:CE2	2:B:374:LEU:HD22	2.46	0.50
4:D:236:TYR:OH	4:D:336:TYR:HB3	2.11	0.50
4:D:259:GLY:O	4:D:262:GLU:HG3	2.11	0.50
1:A:629:ILE:HD11	1:A:767:TYR:HD2	1.76	0.50
4:D:227:LYS:HD2	4:D:232:ILE:HG13	1.93	0.50
3:C:71:CYS:HB2	3:C:99:CYS:HB3	1.92	0.50
1:A:315:ARG:HH22	1:A:320:SER:C	2.14	0.50
1:A:625:GLU:HG3	1:A:768:ARG:HH21	1.77	0.50
2:B:126:ASN:HB3	2:B:167:TYR:HD1	1.77	0.49
2:B:192:ASP:HA	2:B:223:TYR:HD1	1.75	0.49
4:D:236:TYR:CE1	4:D:336:TYR:CD2	3.00	0.49
2:B:35:ARG:NH1	2:B:303:GLY:O	2.46	0.49
4:D:263:TYR:HD1	4:D:305:LEU:HD21	1.77	0.49
2:B:157:ILE:O	2:B:161:ILE:HG13	2.12	0.49
3:C:59:CYS:HB2	3:C:68:LEU:HD22	1.95	0.49
1:A:315:ARG:HA	1:A:315:ARG:NE	2.27	0.49
1:A:623:VAL:HG22	1:A:625:GLU:OE2	2.13	0.49
2:B:141:HIS:HB3	2:B:157:ILE:HD12	1.95	0.49
1:A:580:LYS:NZ	1:A:852:PHE:HB3	2.28	0.48
4:D:241:LYS:HG2	4:D:250:GLU:HG2	1.94	0.48
1:A:753:LEU:HD11	1:A:925:PHE:HZ	1.77	0.48
1:A:868:LEU:HG	1:A:874:CYS:SG	2.53	0.48
1:A:872:ASP:HA	1:A:875:LEU:HD12	1.94	0.48
2:B:182:ASP:O	2:B:186:GLU:HB3	2.13	0.48
1:A:923:VAL:HG22	1:A:936:ILE:HG22	1.96	0.48
2:B:296:LEU:HD12	2:B:297:LEU:N	2.28	0.48
1:A:466:LEU:HD11	1:A:549:TRP:HB3	1.96	0.48
1:A:905:THR:O	1:A:908:GLN:HB3	2.14	0.48

Continued on next page...

Continued from previous page...

Atom-1	Atom-2	Interatomic distance (Å)	Clash overlap (Å)
2:B:73:TYR:HA	2:B:95:PHE:CE2	2.44	0.48
2:B:355:ASN:HB3	2:B:360:MET:HE1	1.96	0.48
4:D:223:LEU:HB2	4:D:224:PRO:HD3	1.94	0.48
1:A:344:LEU:HD12	1:A:366:LEU:HD22	1.95	0.48
3:C:320:GLU:HG3	3:C:338:PHE:CD1	2.49	0.48
1:A:580:LYS:NZ	1:A:837:GLU:OE2	2.39	0.48
2:B:135:ASN:OD1	2:B:138:GLY:N	2.47	0.48
1:A:328:LEU:HA	1:A:331:ILE:HG12	1.96	0.47
4:D:288:HIS:HB3	4:D:291:ALA:HB3	1.96	0.47
1:A:860:ASN:O	1:A:864:GLN:HG2	2.13	0.47
3:C:279:ARG:HH22	3:C:283:VAL:HG21	1.79	0.47
4:D:223:LEU:HD12	4:D:284:ILE:HD11	1.97	0.47
2:B:180:HIS:NE2	2:B:185:GLU:OE1	2.38	0.47
1:A:618:PRO:HB3	1:A:935:THR:HG22	1.96	0.47
3:C:61:SER:OG	3:C:82:CYS:SG	2.73	0.47
1:A:482:LYS:HB3	1:A:482:LYS:NZ	2.29	0.47
3:C:333:ASN:O	3:C:336:GLN:HG2	2.15	0.47
4:D:269:GLY:O	4:D:278:ARG:NH1	2.48	0.47
1:A:313:LYS:NZ	1:A:361:GLN:OE1	2.31	0.46
2:B:248:LYS:HD2	2:B:372:ARG:NH1	2.31	0.46
1:A:606:GLN:HE21	1:A:611:ARG:HB2	1.81	0.46
1:A:626:ASP:OD2	1:A:627:ARG:N	2.49	0.46
4:D:213:LEU:HD13	4:D:217:GLN:HG3	1.98	0.46
2:B:78:ARG:HG3	2:B:108:PHE:CD2	2.50	0.46
2:B:223:TYR:HE2	2:B:374:LEU:HD22	1.79	0.46
1:A:515:ILE:HG22	1:A:516:TYR:CD2	2.51	0.46
2:B:298:MET:HE1	2:B:320:ALA:HB2	1.97	0.46
4:D:254:ASN:OD1	4:D:255:GLU:N	2.48	0.46
4:D:354:PRO:HB2	4:D:356:GLU:OE1	2.16	0.46
1:A:915:MET:HB3	1:A:918:GLU:HB3	1.98	0.46
2:B:288:VAL:O	2:B:291:THR:OG1	2.33	0.46
2:B:341:ASP:OD2	2:B:342:PHE:N	2.48	0.46
1:A:324:TYR:CZ	1:A:328:LEU:HD21	2.51	0.46
1:A:334:PHE:HB2	1:A:344:LEU:HD23	1.98	0.46
1:A:347:LEU:O	1:A:350:PRO:HD2	2.15	0.46
1:A:595:GLU:OE2	1:A:620:LEU:HD11	2.16	0.46
1:A:596:ILE:HG21	1:A:921:PHE:HE1	1.81	0.46
1:A:638:SER:HA	1:A:641:VAL:HG12	1.98	0.46
4:D:270:THR:OG1	4:D:271:GLN:N	2.49	0.46
2:B:126:ASN:HB3	2:B:167:TYR:CD1	2.51	0.46
2:B:305:THR:HG23	2:B:308:ASN:HB2	1.97	0.46

Continued on next page...

Continued from previous page...

Atom-1	Atom-2	Interatomic distance (Å)	Clash overlap (Å)
4:D:212:ASP:O	4:D:217:GLN:N	2.36	0.46
1:A:405:PRO:HB2	1:A:408:TYR:HB2	1.98	0.45
1:A:585:LYS:NZ	1:A:591:SER:OG	2.48	0.45
1:A:919:ASN:HD21	1:A:938:LEU:HD23	1.81	0.45
2:B:11:LYS:HG3	2:B:53:GLU:OE1	2.15	0.45
1:A:458:GLU:HB3	1:A:560:TRP:HZ2	1.81	0.45
1:A:592:LEU:HD22	1:A:754:ARG:HG2	1.99	0.45
2:B:233:ILE:HG23	2:B:277:LEU:HD21	1.97	0.45
4:D:203:LEU:C	4:D:205:PRO:HD2	2.37	0.45
1:A:476:LEU:HB3	1:A:539:LEU:HD13	1.97	0.45
1:A:768:ARG:HG2	1:A:768:ARG:NH1	2.31	0.45
2:B:136:TRP:HZ3	2:B:262:CYS:HB3	1.81	0.45
1:A:550:ARG:HA	1:A:550:ARG:HD3	1.78	0.45
1:A:561:ARG:NE	2:B:336:GLU:OE2	2.45	0.45
1:A:569:LEU:HB3	1:A:841:ARG:HD3	1.99	0.45
4:D:252:ALA:O	4:D:255:GLU:HB2	2.17	0.45
3:C:329:MET:N	3:C:334:ARG:HH21	2.15	0.45
2:B:126:ASN:ND2	2:B:163:GLU:O	2.44	0.45
4:D:340:ASN:HD22	4:D:340:ASN:N	2.12	0.45
3:C:63:LYS:HD2	3:C:63:LYS:HA	1.82	0.44
1:A:479:VAL:O	1:A:483:LEU:HD13	2.17	0.44
1:A:625:GLU:OE2	1:A:625:GLU:N	2.50	0.44
1:A:906:SER:O	1:A:910:LYS:HG3	2.17	0.44
2:B:215:ILE:O	2:B:222:TYR:N	2.50	0.44
4:D:230:ASP:HB2	4:D:295:GLN:OE1	2.17	0.44
1:A:626:ASP:OD1	1:A:629:ILE:HG13	2.18	0.44
2:B:280:LYS:HE2	2:B:280:LYS:HB2	1.73	0.44
1:A:459:ARG:HA	1:A:560:TRP:CH2	2.52	0.44
3:C:79:HIS:HB2	3:C:82:CYS:SG	2.58	0.44
1:A:803:ARG:NH2	2:B:329:LEU:O	2.50	0.44
4:D:306:PHE:HA	4:D:309:ILE:HG22	1.99	0.44
1:A:622:PHE:HE2	1:A:936:ILE:HD11	1.83	0.44
1:A:753:LEU:HD21	1:A:934:MET:HE3	1.99	0.44
1:A:832:ASP:HB3	1:A:835:GLN:OE1	2.18	0.44
2:B:188:PHE:CD2	2:B:194:VAL:HG11	2.53	0.44
3:C:294:LEU:HD12	3:C:294:LEU:HA	1.82	0.44
2:B:90:LYS:HA	2:B:90:LYS:HD3	1.67	0.44
2:B:202:TYR:HB3	3:C:306:THR:HG21	1.99	0.44
2:B:237:SER:O	2:B:241:ILE:HG23	2.17	0.44
1:A:328:LEU:HA	1:A:328:LEU:HD13	1.79	0.43
1:A:626:ASP:OD2	1:A:628:GLN:N	2.45	0.43

Continued on next page...

Continued from previous page...

Atom-1	Atom-2	Interatomic distance (Å)	Clash overlap (Å)
2:B:118:SER:N	2:B:135:ASN:HD22	2.16	0.43
1:A:315:ARG:HA	1:A:315:ARG:HE	1.83	0.43
1:A:417:THR:O	1:A:421:LYS:HG3	2.19	0.43
2:B:283:ALA:HB2	2:B:316:GLU:HG2	1.99	0.43
4:D:279:PRO:HG2	4:D:357:TYR:CZ	2.53	0.43
4:D:204:LYS:HD3	4:D:205:PRO:CD	2.48	0.43
1:A:640:TYR:HD1	1:A:827:LEU:HD22	1.83	0.43
1:A:755:LEU:HD22	1:A:857:LEU:HD12	2.00	0.43
1:A:620:LEU:HD13	1:A:622:PHE:CZ	2.54	0.43
1:A:845:THR:HG23	1:A:846:ILE:N	2.34	0.43
1:A:926:LEU:HD12	1:A:926:LEU:O	2.19	0.43
4:D:253:VAL:HG13	4:D:329:TYR:OH	2.18	0.43
1:A:493:LYS:HA	1:A:493:LYS:HD2	1.80	0.42
2:B:283:ALA:O	2:B:287:GLU:HG3	2.19	0.42
4:D:340:ASN:H	4:D:340:ASN:ND2	2.16	0.42
1:A:557:ASN:HA	1:A:560:TRP:HB2	2.00	0.42
1:A:742:LEU:HD23	1:A:742:LEU:HA	1.82	0.42
1:A:897:ARG:O	1:A:901:ALA:N	2.53	0.42
2:B:10:LYS:HD3	2:B:10:LYS:HA	1.77	0.42
3:C:286:LEU:HD13	3:C:295:LEU:HB3	2.01	0.42
2:B:230:ARG:HB2	2:B:355:ASN:OD1	2.20	0.42
4:D:228:ASN:ND2	4:D:295:GLN:HG3	2.26	0.42
1:A:641:VAL:HG22	1:A:652:GLN:NE2	2.35	0.42
1:A:920:CYS:SG	1:A:939:LEU:HD12	2.60	0.42
2:B:272:LEU:HD12	2:B:304:TYR:CD1	2.53	0.42
2:B:312:CYS:O	2:B:316:GLU:HG3	2.19	0.42
3:C:286:LEU:HD13	3:C:295:LEU:HD23	2.01	0.42
3:C:297:HIS:HB2	3:C:300:CYS:SG	2.60	0.42
4:D:308:ARG:HD2	4:D:308:ARG:HA	1.89	0.42
1:A:556:PHE:HE2	3:C:20:LEU:HG	1.84	0.42
1:A:596:ILE:HG13	1:A:938:LEU:HD11	2.02	0.42
1:A:897:ARG:HA	1:A:900:ARG:HH21	1.85	0.42
4:D:211:TRP:HA	4:D:214:ILE:HG22	2.01	0.42
2:B:170:ARG:HD2	2:B:253:TYR:CE1	2.55	0.42
2:B:265:ASP:HA	2:B:270:ASP:OD2	2.19	0.42
3:C:348:HIS:CD2	3:C:349:VAL:HG23	2.55	0.42
1:A:581:GLN:HA	1:A:584:THR:HG22	2.02	0.42
1:A:836:TYR:OH	1:A:851:GLY:O	2.29	0.42
2:B:171:VAL:CG1	2:B:194:VAL:HG22	2.50	0.42
1:A:500:LEU:HD12	1:A:508:GLN:HB3	2.02	0.41
2:B:30:PRO:HB3	2:B:271:ARG:HD3	2.01	0.41

Continued on next page...

Continued from previous page...

Atom-1	Atom-2	Interatomic distance (Å)	Clash overlap (Å)
2:B:353:ASN:OD1	2:B:355:ASN:HB2	2.20	0.41
1:A:323:VAL:HG21	3:C:294:LEU:HD22	2.02	0.41
1:A:331:ILE:HD11	3:C:351:LYS:HB2	2.01	0.41
1:A:328:LEU:HD12	1:A:331:ILE:HD11	2.01	0.41
2:B:38:MET:HA	2:B:41:ASN:HB2	2.02	0.41
1:A:585:LYS:O	1:A:588:ARG:HG3	2.21	0.41
2:B:143:ALA:HB3	2:B:155:ASN:HB2	2.03	0.41
2:B:42:LEU:HD13	2:B:314:THR:HG21	2.02	0.41
2:B:141:HIS:CD2	2:B:141:HIS:H	2.37	0.41
3:C:208:ARG:HB2	3:C:209:PRO:HD3	2.02	0.41
4:D:268:LEU:HD23	4:D:269:GLY:N	2.36	0.41
1:A:583:ASP:OD1	1:A:762:ARG:NH1	2.53	0.41
3:C:30:PRO:O	3:C:32:LYS:HG3	2.21	0.41
1:A:319:LYS:HD3	1:A:609:GLU:HG3	2.02	0.41
1:A:593:LEU:HD23	1:A:593:LEU:HA	1.92	0.41
1:A:859:GLN:O	1:A:863:ARG:HG3	2.20	0.41
2:B:77:LEU:HD23	2:B:77:LEU:HA	1.86	0.41
2:B:333:ASP:N	2:B:333:ASP:OD1	2.54	0.41
4:D:204:LYS:O	4:D:206:TRP:N	2.54	0.41
1:A:459:ARG:HG2	2:B:337:TYR:CZ	2.56	0.41
3:C:264:ASN:OD1	3:C:264:ASN:N	2.53	0.41
3:C:316:PRO:HA	3:C:321:HIS:CE1	2.56	0.41
3:C:351:LYS:HD2	3:C:352:VAL:N	2.36	0.41
1:A:402:ARG:HD3	4:D:352:VAL:HG11	2.03	0.40
1:A:885:LYS:O	1:A:885:LYS:NZ	2.52	0.40
2:B:78:ARG:HG3	2:B:108:PHE:CE2	2.56	0.40
2:B:180:HIS:ND1	2:B:209:THR:OG1	2.50	0.40
2:B:289:VAL:HG12	2:B:296:LEU:HD22	2.03	0.40
2:B:16:TYR:OH	2:B:37:ARG:HA	2.20	0.40
4:D:257:VAL:HG12	4:D:261:LYS:NZ	2.36	0.40
3:C:104:VAL:HA	3:C:107:LYS:HE3	2.02	0.40
1:A:919:ASN:OD1	1:A:920:CYS:N	2.55	0.40
2:B:333:ASP:HB2	2:B:334:TYR:CE2	2.57	0.40
3:C:289:CYS:HB3	3:C:292:CYS:O	2.22	0.40
1:A:622:PHE:HD2	1:A:934:MET:SD	2.44	0.40
2:B:177:ASP:OD1	2:B:178:ILE:N	2.54	0.40
2:B:334:TYR:CD2	2:B:334:TYR:N	2.89	0.40

There are no symmetry-related clashes.

5.3 Torsion angles [i](#)

5.3.1 Protein backbone [i](#)

In the following table, the Percentiles column shows the percent Ramachandran outliers of the chain as a percentile score with respect to all PDB entries followed by that with respect to all EM entries.

The Analysed column shows the number of residues for which the backbone conformation was analysed, and the total number of residues.

Mol	Chain	Analysed	Favoured	Allowed	Outliers	Percentiles	
1	A	528/1130 (47%)	513 (97%)	15 (3%)	0	100	100
2	B	366/488 (75%)	362 (99%)	4 (1%)	0	100	100
3	C	205/1004 (20%)	198 (97%)	7 (3%)	0	100	100
4	D	161/362 (44%)	144 (89%)	17 (11%)	0	100	100
All	All	1260/2984 (42%)	1217 (97%)	43 (3%)	0	100	100

There are no Ramachandran outliers to report.

5.3.2 Protein sidechains [i](#)

In the following table, the Percentiles column shows the percent sidechain outliers of the chain as a percentile score with respect to all PDB entries followed by that with respect to all EM entries.

The Analysed column shows the number of residues for which the sidechain conformation was analysed, and the total number of residues.

Mol	Chain	Analysed	Rotameric	Outliers	Percentiles	
1	A	478/997 (48%)	442 (92%)	36 (8%)	13	41
2	B	315/417 (76%)	295 (94%)	20 (6%)	18	47
3	C	197/879 (22%)	191 (97%)	6 (3%)	41	68
4	D	142/318 (45%)	135 (95%)	7 (5%)	25	55
All	All	1132/2611 (43%)	1063 (94%)	69 (6%)	22	48

All (69) residues with a non-rotameric sidechain are listed below:

Mol	Chain	Res	Type
1	A	342	SER
1	A	346	GLN

Continued on next page...

Continued from previous page...

Mol	Chain	Res	Type
1	A	354	LYS
1	A	355	PHE
1	A	362	PHE
1	A	434	TRP
1	A	463	ASP
1	A	490	ASP
1	A	499	SER
1	A	519	LYS
1	A	556	PHE
1	A	562	GLU
1	A	583	ASP
1	A	604	GLN
1	A	640	TYR
1	A	652	GLN
1	A	656	HIS
1	A	667	PHE
1	A	740	TYR
1	A	743	PHE
1	A	747	ASN
1	A	754	ARG
1	A	767	TYR
1	A	768	ARG
1	A	772	LYS
1	A	815	TYR
1	A	835	GLN
1	A	842	GLU
1	A	843	MET
1	A	871	ASP
1	A	875	LEU
1	A	900	ARG
1	A	913	ARG
1	A	915	MET
1	A	920	CYS
1	A	922	LYS
2	B	16	TYR
2	B	19	ASP
2	B	25	TYR
2	B	27	GLN
2	B	71	ASP
2	B	76	PHE
2	B	105	ASP
2	B	141	HIS

Continued on next page...

Continued from previous page...

Mol	Chain	Res	Type
2	B	192	ASP
2	B	231	ASP
2	B	238	TYR
2	B	251	GLU
2	B	261	GLN
2	B	268	SER
2	B	298	MET
2	B	305	THR
2	B	334	TYR
2	B	336	GLU
2	B	347	SER
2	B	360	MET
3	C	218	MET
3	C	281	CYS
3	C	310	LEU
3	C	315	CYS
3	C	320	GLU
3	C	351	LYS
4	D	204	LYS
4	D	212	ASP
4	D	236	TYR
4	D	272	LEU
4	D	276	PHE
4	D	329	TYR
4	D	340	ASN

Sometimes sidechains can be flipped to improve hydrogen bonding and reduce clashes. All (10) such sidechains are listed below:

Mol	Chain	Res	Type
1	A	574	HIS
1	A	606	GLN
1	A	607	HIS
1	A	619	HIS
1	A	661	GLN
1	A	908	GLN
3	C	205	GLN
3	C	318	HIS
4	D	228	ASN
4	D	340	ASN

5.3.3 RNA [i](#)

There are no RNA molecules in this entry.

5.4 Non-standard residues in protein, DNA, RNA chains [i](#)

There are no non-standard protein/DNA/RNA residues in this entry.

5.5 Carbohydrates [i](#)

There are no monosaccharides in this entry.

5.6 Ligand geometry [i](#)

Of 7 ligands modelled in this entry, 7 are monoatomic - leaving 0 for Mogul analysis.

There are no bond length outliers.

There are no bond angle outliers.

There are no chirality outliers.

There are no torsion outliers.

There are no ring outliers.

No monomer is involved in short contacts.

5.7 Other polymers [i](#)

There are no such residues in this entry.

5.8 Polymer linkage issues [i](#)

There are no chain breaks in this entry.

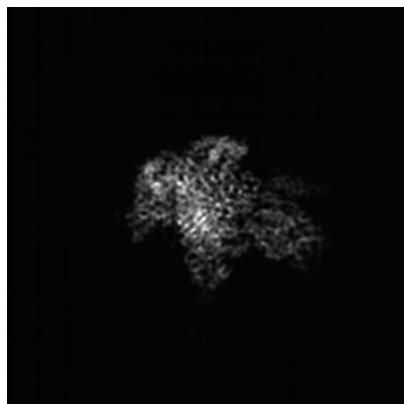
6 Map visualisation [i](#)

This section contains visualisations of the EMDB entry EMD-16449. These allow visual inspection of the internal detail of the map and identification of artifacts.

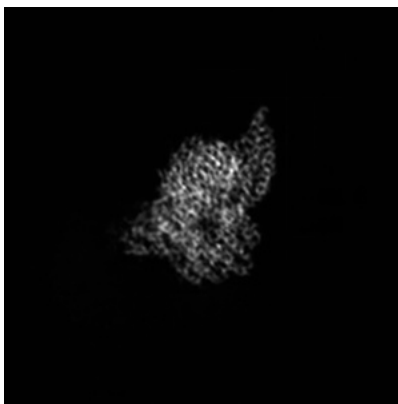
Images derived from a raw map, generated by summing the deposited half-maps, are presented below the corresponding image components of the primary map to allow further visual inspection and comparison with those of the primary map.

6.1 Orthogonal projections [i](#)

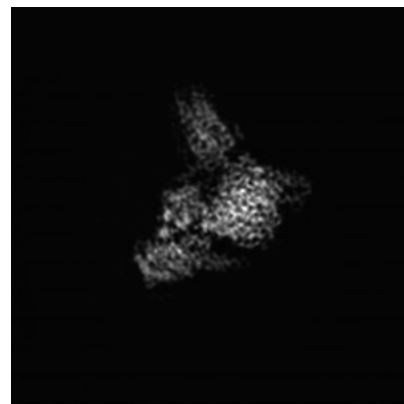
6.1.1 Primary map



X

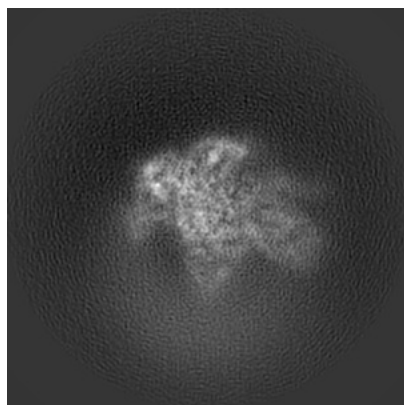


Y

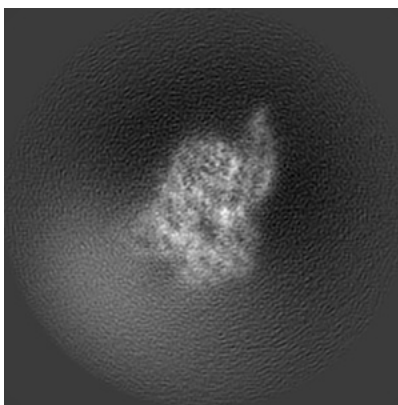


Z

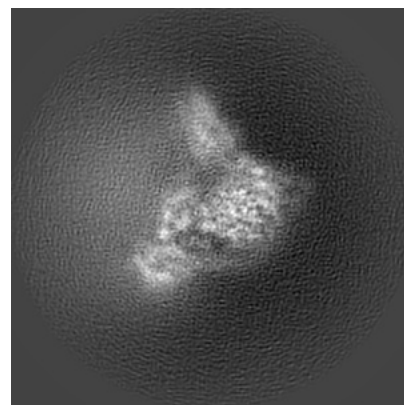
6.1.2 Raw map



X



Y



Z

The images above show the map projected in three orthogonal directions.

6.2 Central slices [i](#)

6.2.1 Primary map



X Index: 100

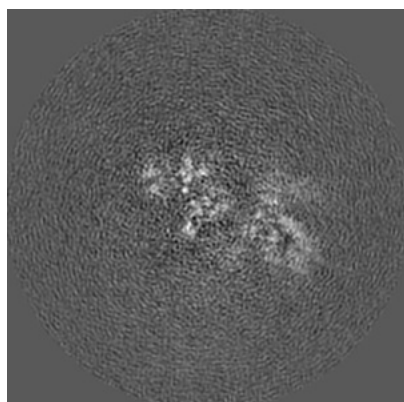


Y Index: 100

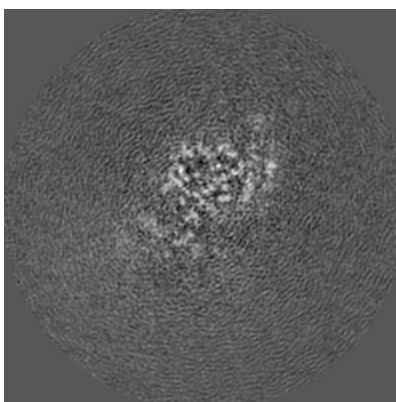


Z Index: 100

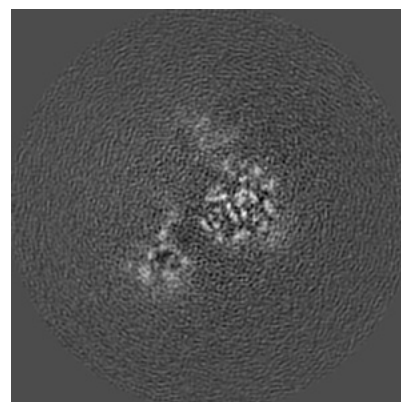
6.2.2 Raw map



X Index: 100



Y Index: 100



Z Index: 100

The images above show central slices of the map in three orthogonal directions.

6.3 Largest variance slices [i](#)

6.3.1 Primary map



X Index: 115

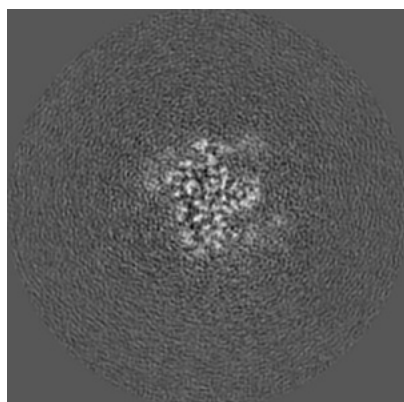


Y Index: 97

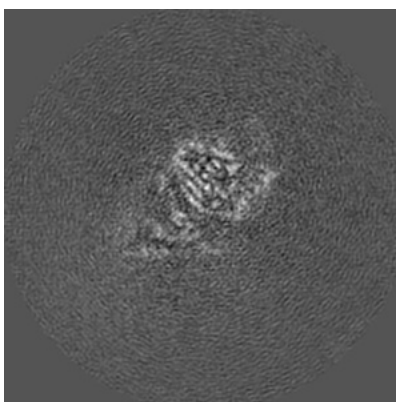


Z Index: 95

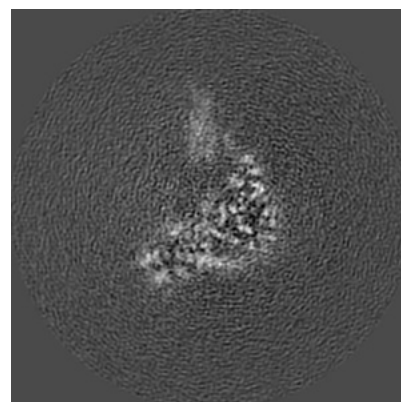
6.3.2 Raw map



X Index: 115



Y Index: 97

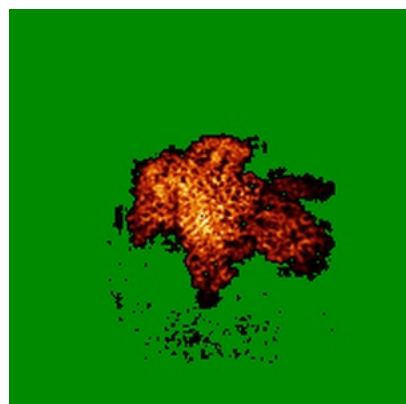


Z Index: 110

The images above show the largest variance slices of the map in three orthogonal directions.

6.4 Orthogonal standard-deviation projections (False-color) [i](#)

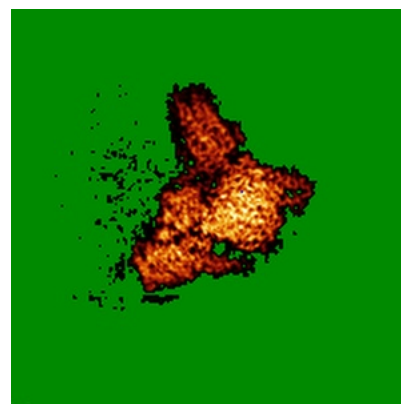
6.4.1 Primary map



X

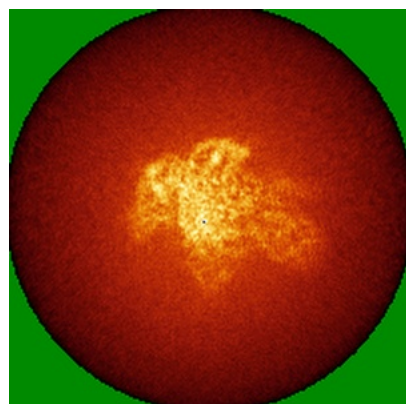


Y

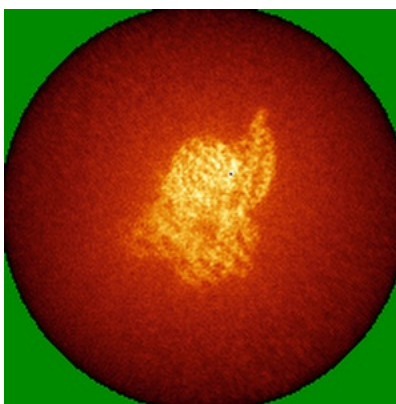


Z

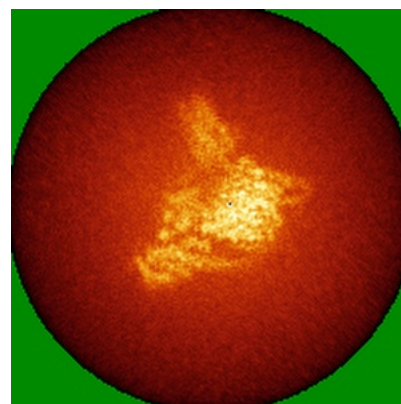
6.4.2 Raw map



X



Y

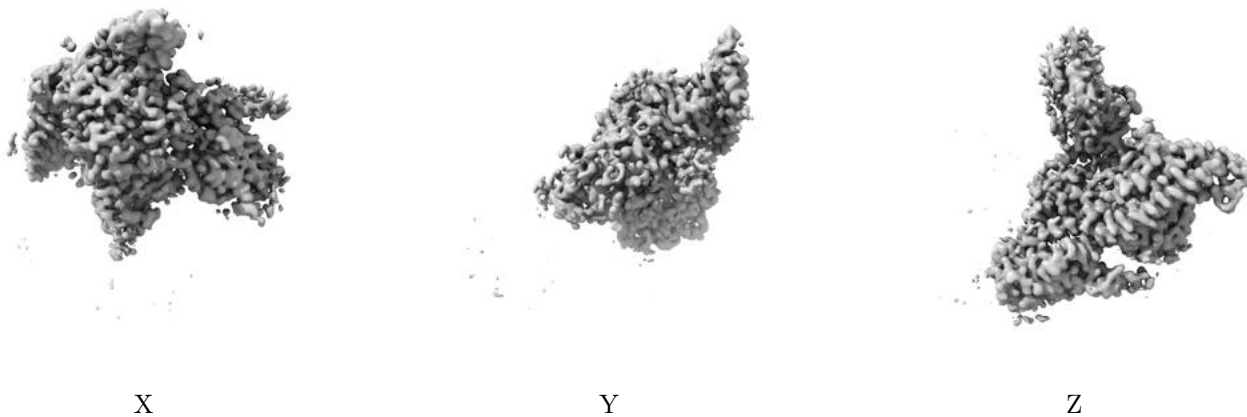


Z

The images above show the map standard deviation projections with false color in three orthogonal directions. Minimum values are shown in green, max in blue, and dark to light orange shades represent small to large values respectively.

6.5 Orthogonal surface views [i](#)

6.5.1 Primary map



The images above show the 3D surface view of the map at the recommended contour level 0.035. These images, in conjunction with the slice images, may facilitate assessment of whether an appropriate contour level has been provided.

6.5.2 Raw map



These images show the 3D surface of the raw map. The raw map's contour level was selected so that its surface encloses the same volume as the primary map does at its recommended contour level.

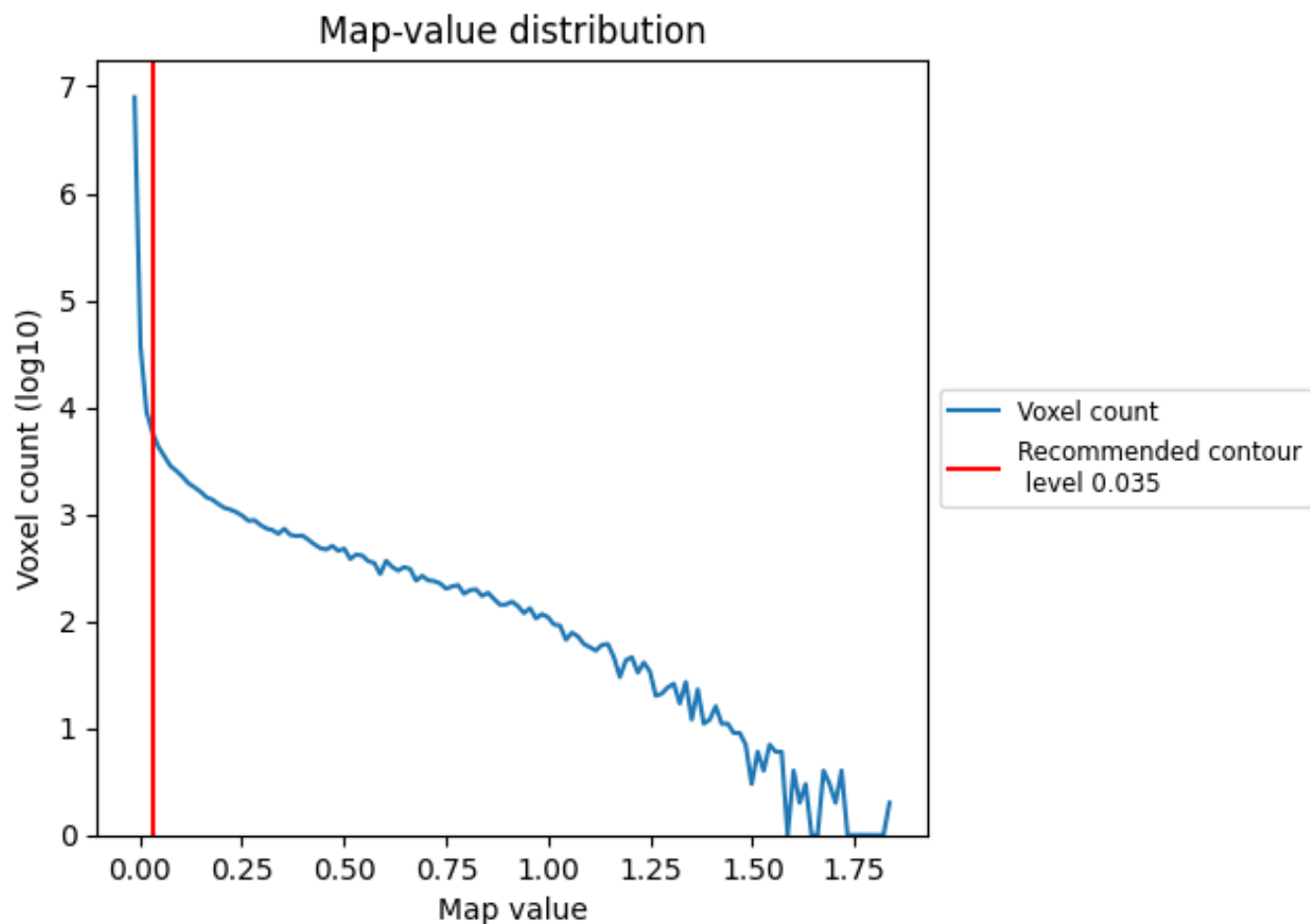
6.6 Mask visualisation [i](#)

This section was not generated. No masks/segmentation were deposited.

7 Map analysis [i](#)

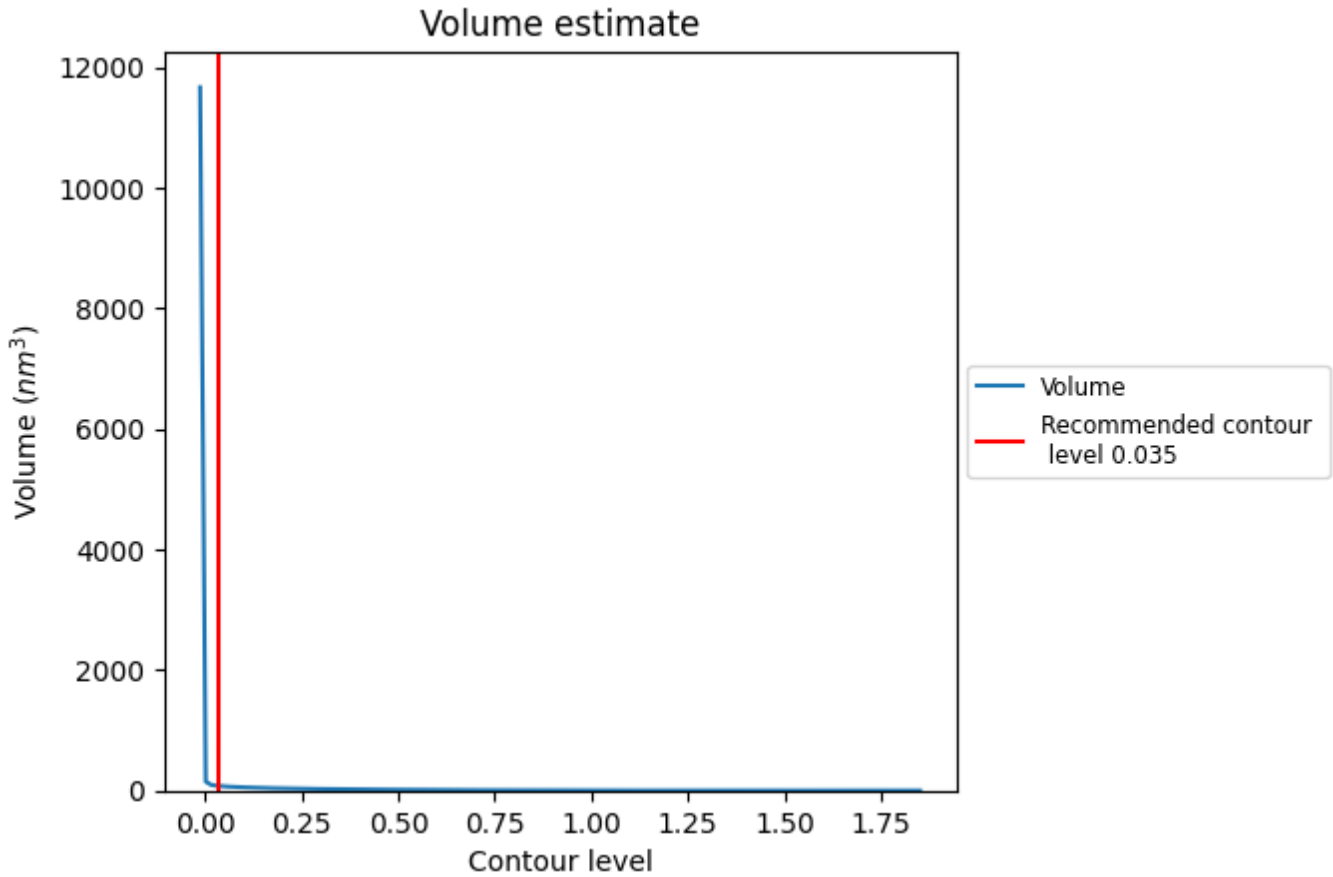
This section contains the results of statistical analysis of the map.

7.1 Map-value distribution [i](#)



The map-value distribution is plotted in 128 intervals along the x-axis. The y-axis is logarithmic. A spike in this graph at zero usually indicates that the volume has been masked.

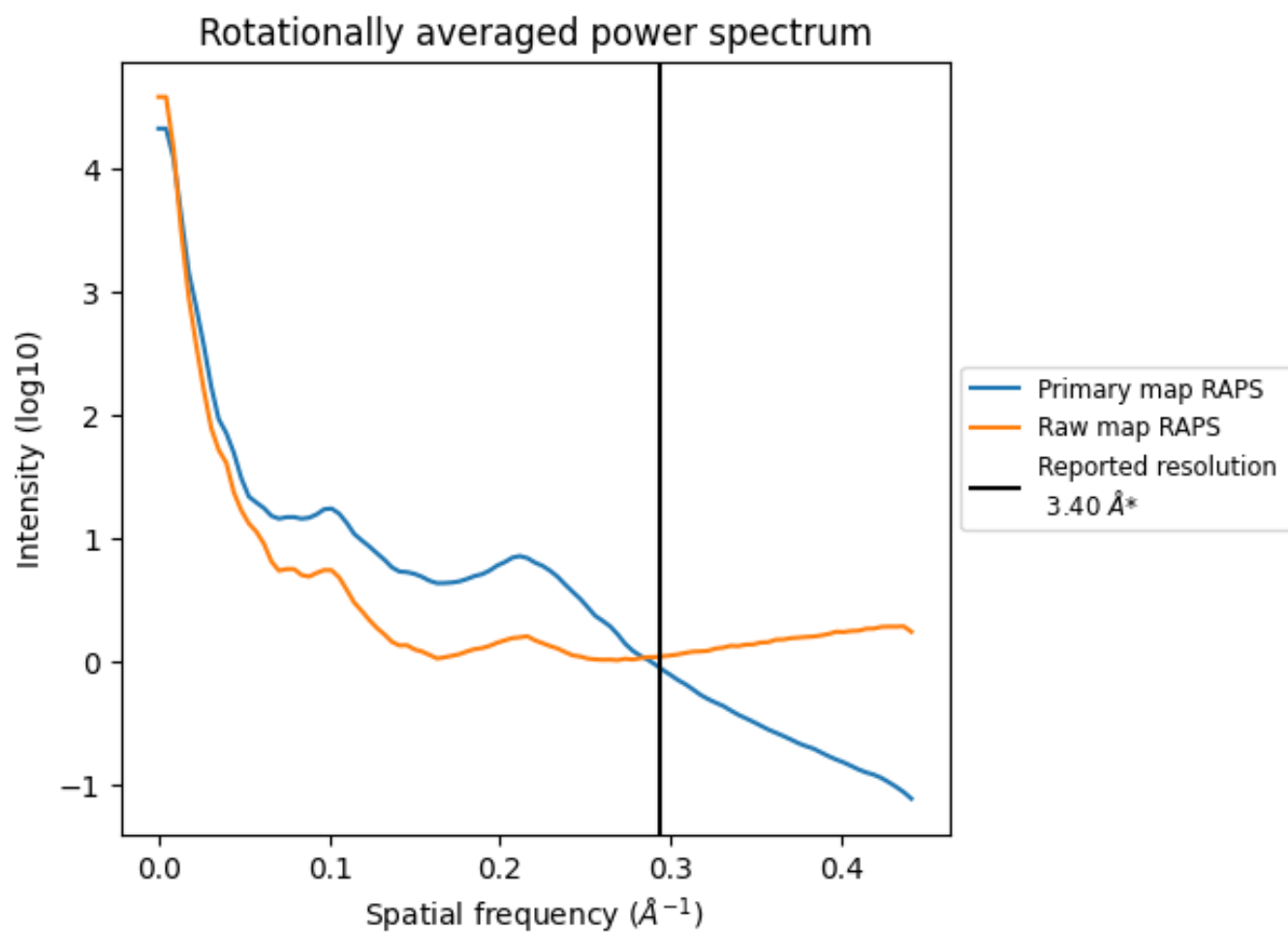
7.2 Volume estimate [i](#)



The volume at the recommended contour level is 78 nm³; this corresponds to an approximate mass of 70 kDa.

The volume estimate graph shows how the enclosed volume varies with the contour level. The recommended contour level is shown as a vertical line and the intersection between the line and the curve gives the volume of the enclosed surface at the given level.

7.3 Rotationally averaged power spectrum [i](#)

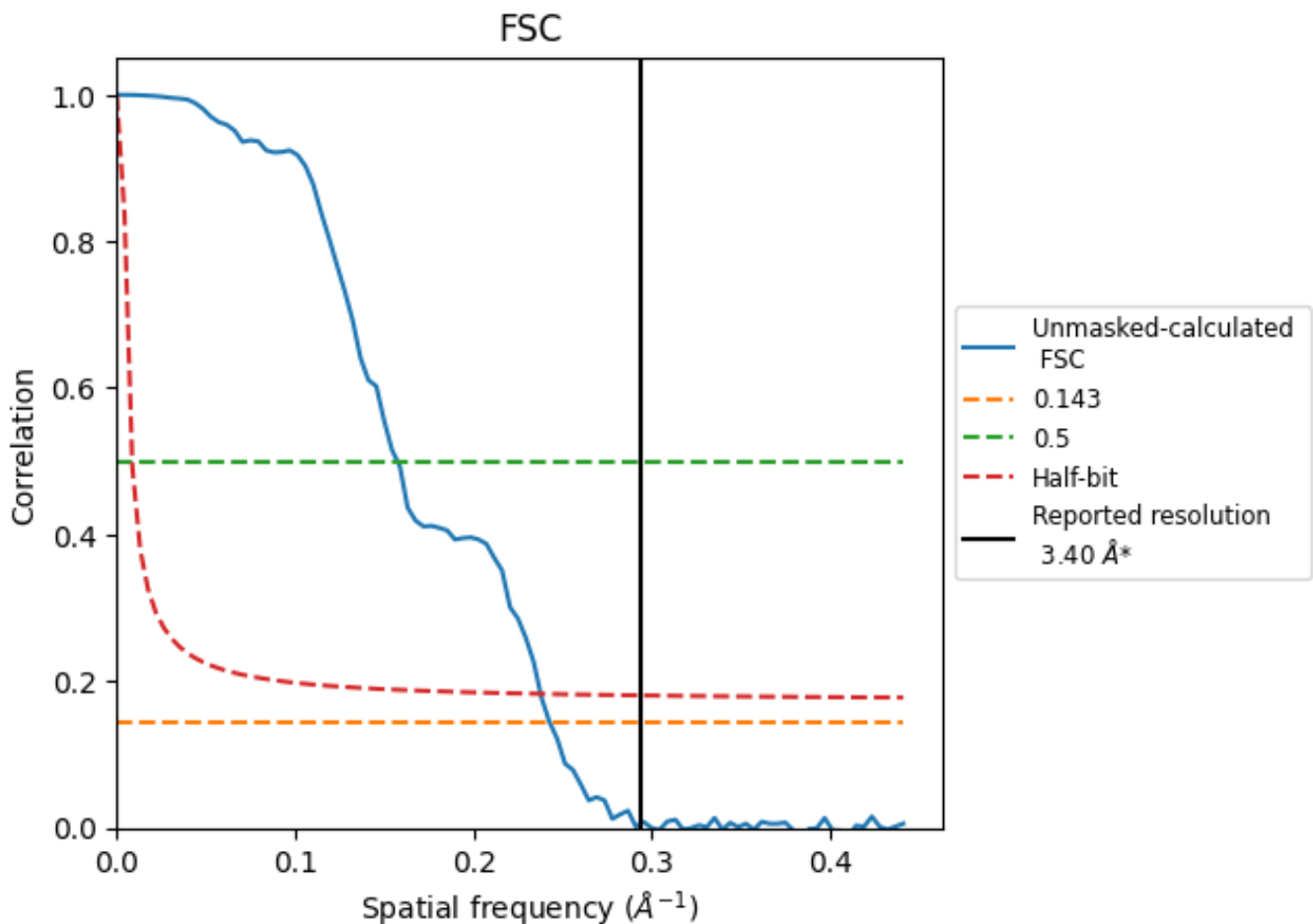


*Reported resolution corresponds to spatial frequency of 0.294 Å⁻¹

8 Fourier-Shell correlation [\(i\)](#)

Fourier-Shell Correlation (FSC) is the most commonly used method to estimate the resolution of single-particle and subtomogram-averaged maps. The shape of the curve depends on the imposed symmetry, mask and whether or not the two 3D reconstructions used were processed from a common reference. The reported resolution is shown as a black line. A curve is displayed for the half-bit criterion in addition to lines showing the 0.143 gold standard cut-off and 0.5 cut-off.

8.1 FSC [\(i\)](#)



*Reported resolution corresponds to spatial frequency of 0.294 Å⁻¹

8.2 Resolution estimates [i](#)

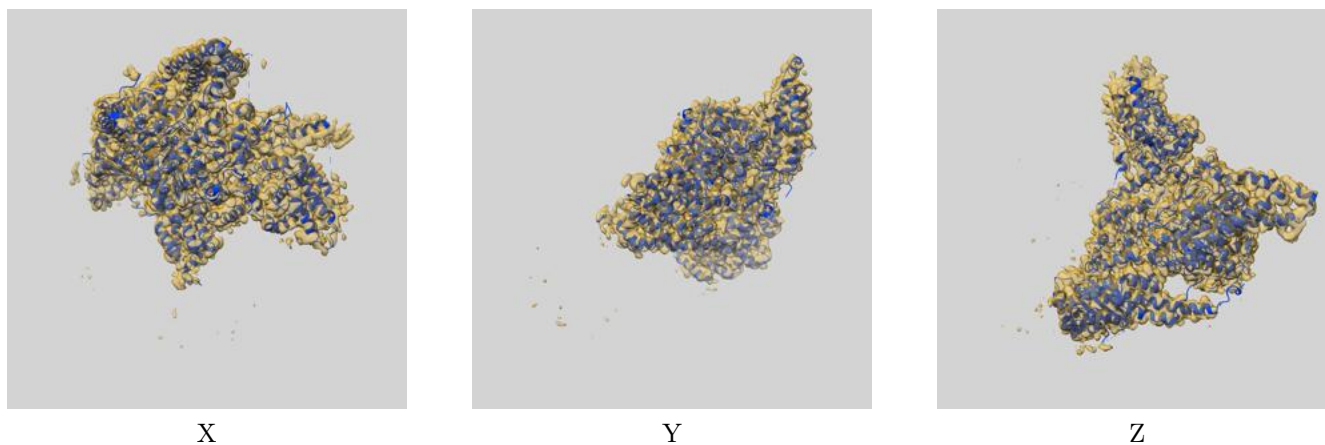
Resolution estimate (Å)	Estimation criterion (FSC cut-off)		
	0.143	0.5	Half-bit
Reported by author	3.40	-	-
Author-provided FSC curve	-	-	-
Unmasked-calculated*	4.12	6.35	4.21

*Resolution estimate based on FSC curve calculated by comparison of deposited half-maps. The value from deposited half-maps intersecting FSC 0.143 CUT-OFF 4.12 differs from the reported value 3.4 by more than 10 %

9 Map-model fit [i](#)

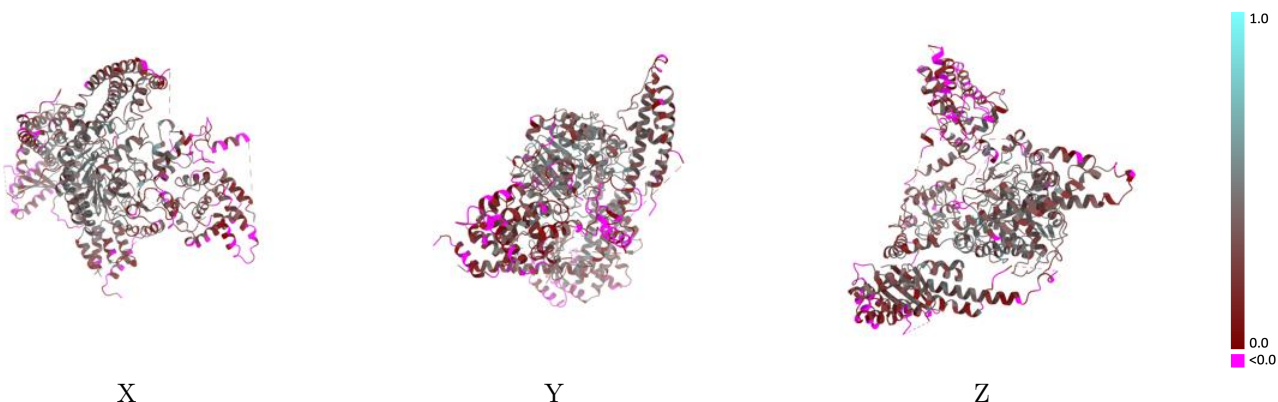
This section contains information regarding the fit between EMDB map EMD-16449 and PDB model 8C60. Per-residue inclusion information can be found in section 3 on page 5.

9.1 Map-model overlay [i](#)



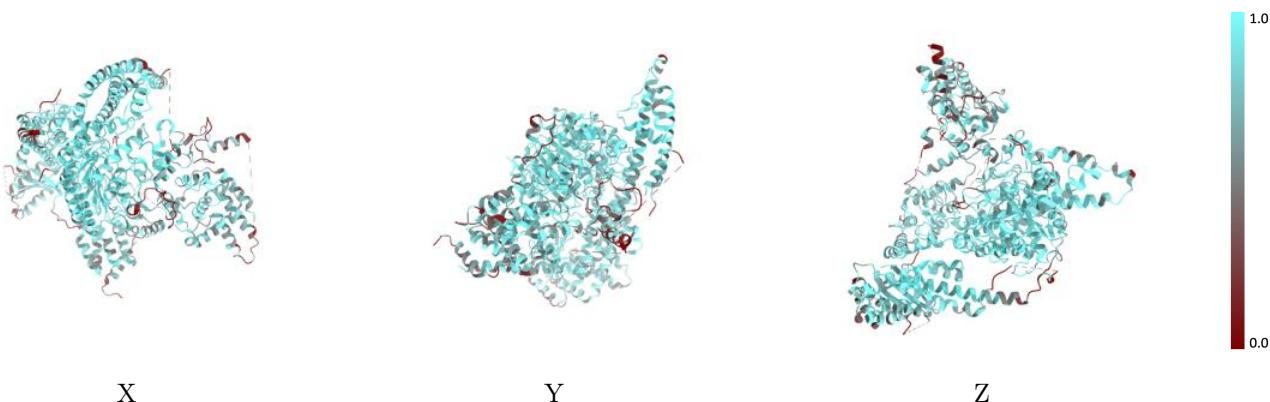
The images above show the 3D surface view of the map at the recommended contour level 0.035 at 50% transparency in yellow overlaid with a ribbon representation of the model coloured in blue. These images allow for the visual assessment of the quality of fit between the atomic model and the map.

9.2 Q-score mapped to coordinate model [\(i\)](#)



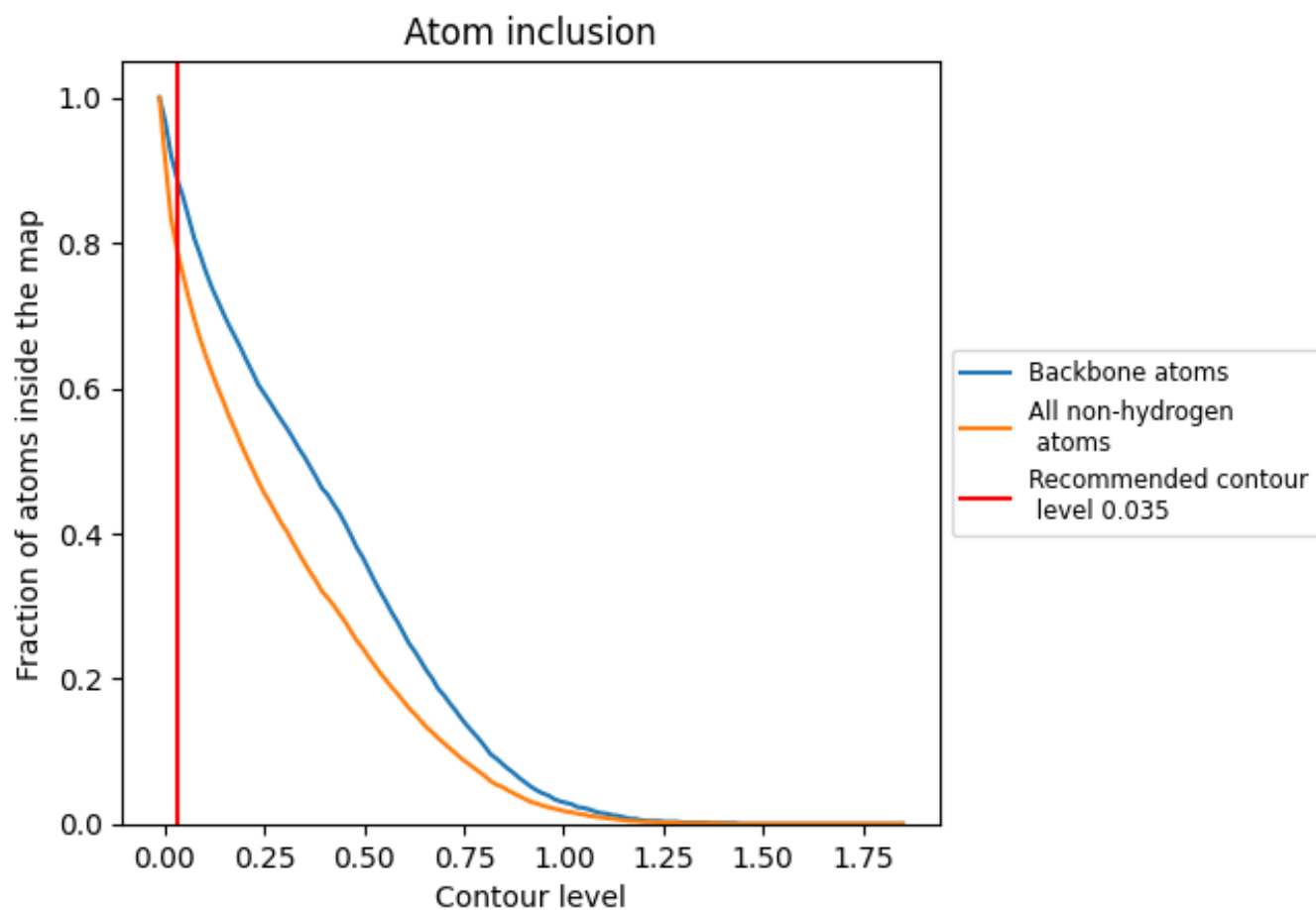
The images above show the model with each residue coloured according to its Q-score. This shows their resolvability in the map with higher Q-score values reflecting better resolvability. Please note: Q-score is calculating the resolvability of atoms, and thus high values are only expected at resolutions at which atoms can be resolved. Low Q-score values may therefore be expected for many entries.

9.3 Atom inclusion mapped to coordinate model [\(i\)](#)



The images above show the model with each residue coloured according to its atom inclusion. This shows to what extent they are inside the map at the recommended contour level (0.035).











9.4 Atom inclusion [i](#)



At the recommended contour level, 88% of all backbone atoms, 78% of all non-hydrogen atoms, are inside the map.

9.5 Map-model fit summary [i](#)

The table lists the average atom inclusion at the recommended contour level (0.035) and Q-score for the entire model and for each chain.

Chain	Atom inclusion	Q-score
All	 0.7820	 0.2910
A	 0.7610	 0.2600
B	 0.9220	 0.4380
C	 0.6420	 0.1880
D	 0.7200	 0.2000

