



## Full wwPDB EM Validation Report ⓘ

Aug 29, 2024 – 04:28 PM EDT

PDB ID : 9C6N  
EMDB ID : EMD-45252  
Title : ARP module of the human TIP60 complex  
Authors : Yang, Z.; Mameri, A.; Florez Ariza, A.J.; Cote, J.; Nogales, E.  
Deposited on : 2024-06-07  
Resolution : 3.29 Å (reported)

This is a Full wwPDB EM Validation Report for a publicly released PDB entry.

We welcome your comments at [validation@mail.wwpdb.org](mailto:validation@mail.wwpdb.org)

A user guide is available at

<https://www.wwpdb.org/validation/2017/EMValidationReportHelp>

with specific help available everywhere you see the ⓘ symbol.

The types of validation reports are described at

<http://www.wwpdb.org/validation/2017/FAQs#types>.

---

The following versions of software and data (see [references ⓘ](#)) were used in the production of this report:

EMDB validation analysis : 0.0.1.dev112  
Mogul : 2022.3.0, CSD as543be (2022)  
MolProbity : 4.02b-467  
buster-report : 1.1.7 (2018)  
Percentile statistics : 20231227.v01 (using entries in the PDB archive December 27th 2023)  
MapQ : 1.9.13  
Ideal geometry (proteins) : Engh & Huber (2001)  
Ideal geometry (DNA, RNA) : Parkinson et al. (1996)  
Validation Pipeline (wwPDB-VP) : 2.38.3

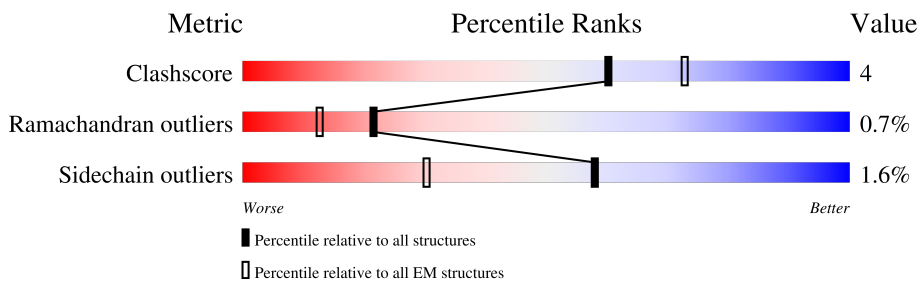
# 1 Overall quality at a glance i

The following experimental techniques were used to determine the structure:

*ELECTRON MICROSCOPY*

The reported resolution of this entry is 3.29 Å.

Percentile scores (ranging between 0-100) for global validation metrics of the entry are shown in the following graphic. The table shows the number of entries on which the scores are based.



Metric	Whole archive (#Entries)	EM structures (#Entries)
Clashscore	210492	15764
Ramachandran outliers	207382	16835
Sidechain outliers	206894	16415

The table below summarises the geometric issues observed across the polymeric chains and their fit to the map. The red, orange, yellow and green segments of the bar indicate the fraction of residues that contain outliers for  $\geq 3$ , 2, 1 and 0 types of geometric quality criteria respectively. A grey segment represents the fraction of residues that are not modelled. The numeric value for each fraction is indicated below the corresponding segment, with a dot representing fractions  $\leq 5\%$ . The upper red bar (where present) indicates the fraction of residues that have poor fit to the EM map (all-atom inclusion  $< 40\%$ ). The numeric value is given above the bar.

Mol	Chain	Length	Quality of chain
1	G	3159	96%
2	H	836	5% 94%
3	I	467	34% 62%
4	J	375	91% 5%
5	L	429	90% 6%

## 2 Entry composition [i](#)

There are 6 unique types of molecules in this entry. The entry contains 17960 atoms, of which 8884 are hydrogens and 0 are deuteriums.

In the tables below, the AltConf column contains the number of residues with at least one atom in alternate conformation and the Trace column contains the number of residues modelled with at most 2 atoms.

- Molecule 1 is a protein called E1A-binding protein p400.

Mol	Chain	Residues	Atoms					AltConf	Trace	
			Total	C	H	N	O			S
1	G	132	2207	709	1092	194	205	7	0	0

- Molecule 2 is a protein called Enhancer of polycomb homolog 1.

Mol	Chain	Residues	Atoms					AltConf	Trace	
			Total	C	H	N	O			S
2	H	53	856	267	426	87	74	2	0	0

- Molecule 3 is a protein called DNA methyltransferase 1-associated protein 1.

Mol	Chain	Residues	Atoms					AltConf	Trace	
			Total	C	H	N	O			S
3	I	176	2969	959	1464	278	265	3	0	0

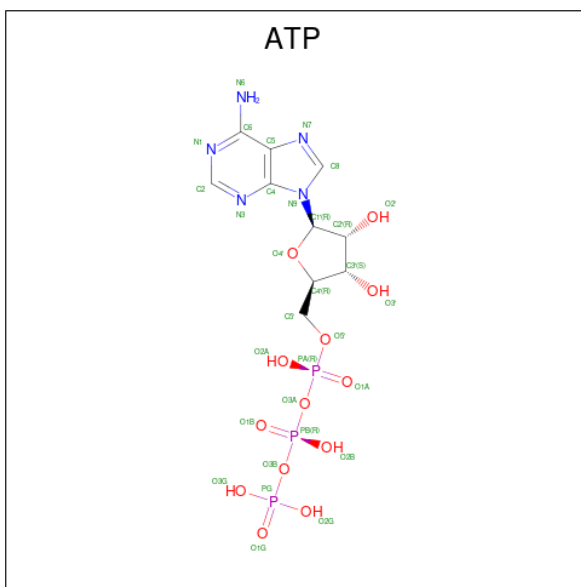
- Molecule 4 is a protein called Actin, cytoplasmic 1.

Mol	Chain	Residues	Atoms					AltConf	Trace	
			Total	C	H	N	O			S
4	J	360	5601	1785	2787	471	538	20	0	0

- Molecule 5 is a protein called Actin-like protein 6A.

Mol	Chain	Residues	Atoms					AltConf	Trace	
			Total	C	H	N	O			S
5	L	404	6241	1990	3091	536	600	24	0	0

- Molecule 6 is ADENOSINE-5'-TRIPHOSPHATE (three-letter code: ATP) (formula: C<sub>10</sub>H<sub>16</sub>N<sub>5</sub>O<sub>13</sub>P<sub>3</sub>) (labeled as "Ligand of Interest" by depositor).



Mol	Chain	Residues	Atoms					AltConf	
			Total	C	H	N	O		P
6	J	1	43	10	12	5	13	3	0
6	L	1	43	10	12	5	13	3	0





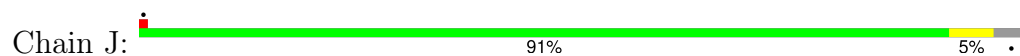






GLN	ALA	CYS	ALA	ASN	CYS	GLU	TYR	PRO	GLU	LEU	GLN	MET	LEU	ARG	HIS	HIS	GLU	ALA	LEU	ALA	ARG	GLY	VAL	LEU	GLY	GLY	PRO	ALA	THR	PRO	ALA	GLY	PRO	ALA	GLU	PRO	ALA	VAL	THR	GLU	PRO	GLY	LEU	GLY	PRO	ASP	PRO	LYS	ASP	THR	ILE	ILE	ASP	
VAL	VAL	GLY	ALA	PRO	LEU	THR	THR	ASN	ASN	ARG	ARG	GLN	ARG	ARG	GLU	ALA	ALA	GLY	VAL	VAL	VAL	LEU	LYS	ALA	LYS	LYS	PRO	VAL	THR	PRO	PRO	ALA	SER	ALA	GLU	PRO	ALA	VAL	THR	GLU	PRO	PRO	GLY	LEU	GLY	PRO	ASP	PRO	LYS	ASP	THR	ILE	ILE	ASP

● Molecule 4: Actin, cytoplasmic 1



MET	ASP	ASP	ASP	I5	R37	F38	R39	HIS	GLN	GLY	GLY	VAL	MET	VAL	VAL	GLY	MET	GLY	GLN	GLN	LYS	D51	A58	R62	Y133	I136	V139	G168	L185	T202	E205	E241	L242	L261	E270	E334	C374	F375
-----	-----	-----	-----	----	-----	-----	-----	-----	-----	-----	-----	-----	-----	-----	-----	-----	-----	-----	-----	-----	-----	-----	-----	-----	------	------	------	------	------	------	------	------	------	------	------	------	------	------

● Molecule 5: Actin-like protein 6A



MET	SER	GLY	GLY	VAL	TYR	GLY	G8	D9	E10	I18	Y23	E46	ARG	ASP	ASP	GLY	SER	THR	LEU	MET	GLU	ILE	ASP	GLY	ASP	LYS	GLY	LYS	GLN	GLY	G65	R79	D171	E241	V285	H286	R320	V333	Y345	S412	Y416	G420	K421	Q422	C423	V428
-----	-----	-----	-----	-----	-----	-----	----	----	-----	-----	-----	-----	-----	-----	-----	-----	-----	-----	-----	-----	-----	-----	-----	-----	-----	-----	-----	-----	-----	-----	-----	-----	------	------	------	------	------	------	------	------	------	------	------	------	------	------

E425	R426	K427	Q428	P429
------	------	------	------	------

## 4 Experimental information

Property	Value	Source
EM reconstruction method	SINGLE PARTICLE	Depositor
Imposed symmetry	POINT, Not provided	
Number of particles used	214481	Depositor
Resolution determination method	FSC 0.143 CUT-OFF	Depositor
CTF correction method	PHASE FLIPPING AND AMPLITUDE CORRECTION	Depositor
Microscope	FEI TITAN KRIOS	Depositor
Voltage (kV)	300	Depositor
Electron dose ( $e^-/\text{\AA}^2$ )	50	Depositor
Minimum defocus (nm)	1000	Depositor
Maximum defocus (nm)	2500	Depositor
Magnification	Not provided	
Image detector	GATAN K3 BIOQUANTUM (6k x 4k)	Depositor
Maximum map value	7.580	Depositor
Minimum map value	-6.086	Depositor
Average map value	-0.002	Depositor
Map value standard deviation	0.049	Depositor
Recommended contour level	0.57	Depositor
Map size ( $\text{\AA}$ )	609.28, 609.28, 609.28	wwPDB
Map dimensions	512, 512, 512	wwPDB
Map angles ( $^\circ$ )	90.0, 90.0, 90.0	wwPDB
Pixel spacing ( $\text{\AA}$ )	1.19, 1.19, 1.19	Depositor

## 5 Model quality [i](#)

### 5.1 Standard geometry [i](#)

Bond lengths and bond angles in the following residue types are not validated in this section: ATP

The Z score for a bond length (or angle) is the number of standard deviations the observed value is removed from the expected value. A bond length (or angle) with  $|Z| > 5$  is considered an outlier worth inspection. RMSZ is the root-mean-square of all Z scores of the bond lengths (or angles).

Mol	Chain	Bond lengths		Bond angles	
		RMSZ	# Z  >5	RMSZ	# Z  >5
1	G	0.38	0/1144	0.70	1/1550 (0.1%)
2	H	0.27	0/438	0.62	0/589
3	I	0.28	0/1547	0.52	0/2083
4	J	0.26	0/2875	0.47	0/3894
5	L	0.26	0/3221	0.46	0/4367
All	All	0.28	0/9225	0.52	1/12483 (0.0%)

Chiral center outliers are detected by calculating the chiral volume of a chiral center and verifying if the center is modelled as a planar moiety or with the opposite hand. A planarity outlier is detected by checking planarity of atoms in a peptide group, atoms in a mainchain group or atoms of a sidechain that are expected to be planar.

Mol	Chain	#Chirality outliers	#Planarity outliers
1	G	0	3
3	I	0	1
All	All	0	4

There are no bond length outliers.

All (1) bond angle outliers are listed below:

Mol	Chain	Res	Type	Atoms	Z	Observed(°)	Ideal(°)
1	G	793	LEU	N-CA-C	-5.32	96.63	111.00

There are no chirality outliers.

All (4) planarity outliers are listed below:

Mol	Chain	Res	Type	Group
1	G	784	ARG	Sidechain
1	G	797	ARG	Sidechain

*Continued on next page...*

*Continued from previous page...*

Mol	Chain	Res	Type	Group
1	G	798	ARG	Sidechain
3	I	128	ARG	Sidechain

## 5.2 Too-close contacts [i](#)

In the following table, the Non-H and H(model) columns list the number of non-hydrogen atoms and hydrogen atoms in the chain respectively. The H(added) column lists the number of hydrogen atoms added and optimized by MolProbity. The Clashes column lists the number of clashes within the asymmetric unit, whereas Symm-Clashes lists symmetry-related clashes.

Mol	Chain	Non-H	H(model)	H(added)	Clashes	Symm-Clashes
1	G	1115	1092	1089	41	0
2	H	430	426	425	11	0
3	I	1505	1464	1463	22	0
4	J	2814	2787	2785	13	0
5	L	3150	3091	3089	12	0
6	J	31	12	12	0	0
6	L	31	12	12	0	0
All	All	9076	8884	8875	77	0

The all-atom clashscore is defined as the number of clashes found per 1000 atoms (including hydrogen atoms). The all-atom clashscore for this structure is 4.

All (77) close contacts within the same asymmetric unit are listed below, sorted by their clash magnitude.

Atom-1	Atom-2	Interatomic distance (Å)	Clash overlap (Å)
1:G:787:GLU:OE2	3:I:247:LEU:CD2	1.66	1.41
1:G:787:GLU:CD	3:I:247:LEU:HD21	1.54	1.28
1:G:787:GLU:OE2	3:I:247:LEU:HD21	1.36	1.01
1:G:787:GLU:OE2	3:I:247:LEU:HD22	1.63	0.97
1:G:780:GLN:OE1	3:I:250:GLU:OE2	1.89	0.89
4:J:133:TYR:OH	4:J:375:PHE:O	2.04	0.76
4:J:202:THR:OG1	4:J:205:GLU:OE1	2.02	0.72
1:G:792:GLY:C	1:G:794:TRP:N	2.41	0.71
1:G:787:GLU:OE2	3:I:247:LEU:HD23	1.88	0.68
1:G:784:ARG:HH12	1:G:788:LEU:HG	1.59	0.67
1:G:854:ARG:O	1:G:854:ARG:NH1	2.26	0.67
4:J:241:GLU:OE1	4:J:242:LEU:N	2.28	0.66
1:G:792:GLY:O	1:G:793:LEU:C	2.34	0.66
5:L:10:GLU:OE1	5:L:10:GLU:N	2.30	0.64

*Continued on next page...*

*Continued from previous page...*

Atom-1	Atom-2	Interatomic distance (Å)	Clash overlap (Å)
1:G:784:ARG:HH11	3:I:251:LEU:HD11	1.64	0.62
1:G:790:LYS:C	1:G:792:GLY:N	2.53	0.62
5:L:241:GLU:N	5:L:241:GLU:OE1	2.32	0.62
1:G:790:LYS:O	1:G:792:GLY:N	2.33	0.61
2:H:450:ARG:HA	2:H:481:LEU:HD21	1.84	0.59
1:G:833:LYS:HE2	4:J:375:PHE:CE2	2.39	0.58
1:G:2227:ASP:OD1	2:H:446:THR:HG22	2.04	0.57
5:L:423:CYS:O	5:L:427:LYS:N	2.37	0.57
1:G:2265:VAL:O	1:G:2267:CYS:N	2.38	0.57
1:G:2224:THR:HG21	2:H:447:VAL:HG21	1.87	0.57
1:G:853:LEU:HD23	1:G:853:LEU:O	2.05	0.56
4:J:270:GLU:OE1	5:L:79:ARG:NH1	2.40	0.54
4:J:185:LEU:HD11	4:J:261:LEU:HD11	1.88	0.54
1:G:784:ARG:HH12	1:G:788:LEU:CG	2.21	0.54
1:G:790:LYS:C	1:G:792:GLY:H	2.10	0.54
3:I:237:THR:OG1	3:I:239:GLU:OE1	2.18	0.54
1:G:784:ARG:HH21	3:I:247:LEU:HD22	1.74	0.53
3:I:85:ALA:O	3:I:87:LEU:N	2.40	0.53
2:H:475:ASP:OD1	2:H:475:ASP:N	2.41	0.53
1:G:829:GLU:O	1:G:833:LYS:HG2	2.08	0.53
1:G:841:VAL:HG21	4:J:168:GLY:HA3	1.90	0.53
1:G:833:LYS:HE2	4:J:375:PHE:CD2	2.44	0.53
2:H:440:TYR:OH	2:H:456:ARG:NH2	2.41	0.52
3:I:113:HIS:HE2	5:L:8:GLY:N	2.06	0.52
4:J:136:ILE:O	4:J:139:VAL:HG12	2.10	0.52
2:H:442:LEU:HD12	2:H:442:LEU:H	1.75	0.51
2:H:460:GLY:N	2:H:464:ARG:O	2.36	0.51
4:J:374:CYS:O	4:J:375:PHE:CD1	2.65	0.50
1:G:830:ARG:O	1:G:833:LYS:HB2	2.14	0.48
5:L:333:VAL:HG11	5:L:345:TYR:CE2	2.47	0.48
1:G:854:ARG:O	1:G:854:ARG:HG2	2.14	0.47
1:G:795:SER:HB3	1:G:796:GLN:HE21	1.80	0.46
2:H:474:TYR:O	2:H:477:VAL:HG22	2.15	0.46
3:I:98:MET:O	3:I:113:HIS:N	2.48	0.46
1:G:2256:ASP:C	1:G:2256:ASP:OD1	2.54	0.46
1:G:835:ALA:CB	3:I:71:LEU:HD11	2.45	0.46
5:L:9:ASP:OD1	5:L:9:ASP:N	2.48	0.46
3:I:233:LEU:O	3:I:236:ARG:NH1	2.49	0.45
5:L:412:SER:O	5:L:416:TYR:N	2.49	0.45
4:J:374:CYS:C	4:J:375:PHE:CD1	2.90	0.45
1:G:784:ARG:HA	1:G:787:GLU:HB2	1.98	0.45

*Continued on next page...*

Continued from previous page...

Atom-1	Atom-2	Interatomic distance (Å)	Clash overlap (Å)
1:G:2260:ILE:HD13	1:G:2260:ILE:N	2.31	0.45
1:G:792:GLY:O	1:G:795:SER:N	2.49	0.44
3:I:231:GLU:OE2	3:I:231:GLU:HA	2.16	0.44
1:G:788:LEU:HD11	3:I:251:LEU:HD21	1.99	0.44
1:G:801:LYS:HG2	1:G:802:LEU:N	2.33	0.44
2:H:481:LEU:O	2:H:482:ASP:OD2	2.36	0.43
2:H:482:ASP:O	2:H:484:GLU:N	2.51	0.43
3:I:113:HIS:HE2	5:L:8:GLY:CA	2.31	0.43
4:J:58:ALA:O	4:J:62:ARG:N	2.52	0.43
4:J:334:GLU:OE1	4:J:334:GLU:N	2.47	0.43
1:G:784:ARG:NH2	3:I:247:LEU:HD22	2.34	0.42
1:G:787:GLU:CD	3:I:247:LEU:CD2	2.36	0.42
1:G:852:GLN:OE1	1:G:852:GLN:C	2.58	0.42
5:L:18:ILE:HG23	5:L:23:VAL:HG22	2.02	0.42
5:L:285:VAL:HG12	5:L:286:HIS:N	2.35	0.41
2:H:442:LEU:HD12	2:H:442:LEU:N	2.34	0.41
3:I:179:ASP:OD1	3:I:181:GLN:NE2	2.53	0.41
1:G:784:ARG:HH11	3:I:251:LEU:CD1	2.31	0.41
1:G:2271:GLU:OE2	1:G:2272:ALA:O	2.39	0.40
1:G:849:GLU:OE1	1:G:850:GLU:N	2.54	0.40
1:G:835:ALA:HB3	3:I:71:LEU:HD11	2.03	0.40
5:L:171:ASP:OD1	5:L:171:ASP:C	2.60	0.40

There are no symmetry-related clashes.

## 5.3 Torsion angles [i](#)

### 5.3.1 Protein backbone [i](#)

In the following table, the Percentiles column shows the percent Ramachandran outliers of the chain as a percentile score with respect to all PDB entries followed by that with respect to all EM entries.

The Analysed column shows the number of residues for which the backbone conformation was analysed, and the total number of residues.

Mol	Chain	Analysed	Favoured	Allowed	Outliers	Percentiles	
1	G	126/3159 (4%)	109 (86%)	10 (8%)	7 (6%)	1	10
2	H	51/836 (6%)	39 (76%)	11 (22%)	1 (2%)	6	28
3	I	172/467 (37%)	166 (96%)	6 (4%)	0	100	100

Continued on next page...

Continued from previous page...

Mol	Chain	Analysed	Favoured	Allowed	Outliers	Percentiles	
4	J	356/375 (95%)	352 (99%)	4 (1%)	0	100	100
5	L	400/429 (93%)	391 (98%)	9 (2%)	0	100	100
All	All	1105/5266 (21%)	1057 (96%)	40 (4%)	8 (1%)	21	50

All (8) Ramachandran outliers are listed below:

Mol	Chain	Res	Type
1	G	795	SER
1	G	791	ALA
1	G	792	GLY
1	G	797	ARG
2	H	481	LEU
1	G	790	LYS
1	G	2266	MET
1	G	2231	MET

### 5.3.2 Protein sidechains [i](#)

In the following table, the Percentiles column shows the percent sidechain outliers of the chain as a percentile score with respect to all PDB entries followed by that with respect to all EM entries.

The Analysed column shows the number of residues for which the sidechain conformation was analysed, and the total number of residues.

Mol	Chain	Analysed	Rotameric	Outliers	Percentiles	
1	G	120/2663 (4%)	111 (92%)	9 (8%)	11	34
2	H	45/738 (6%)	43 (96%)	2 (4%)	24	52
3	I	156/400 (39%)	153 (98%)	3 (2%)	52	72
4	J	306/318 (96%)	305 (100%)	1 (0%)	91	94
5	L	346/364 (95%)	345 (100%)	1 (0%)	91	94
All	All	973/4483 (22%)	957 (98%)	16 (2%)	58	76

All (16) residues with a non-rotameric sidechain are listed below:

Mol	Chain	Res	Type
1	G	784	ARG
1	G	793	LEU
1	G	795	SER

Continued on next page...

*Continued from previous page...*

Mol	Chain	Res	Type
1	G	796	GLN
1	G	797	ARG
1	G	798	ARG
1	G	799	LEU
1	G	854	ARG
1	G	2220	LEU
2	H	451	CYS
2	H	482	ASP
3	I	80	TYR
3	I	128	ARG
3	I	142	GLU
4	J	37	ARG
5	L	9	ASP

Sometimes sidechains can be flipped to improve hydrogen bonding and reduce clashes. All (2) such sidechains are listed below:

Mol	Chain	Res	Type
1	G	780	GLN
1	G	796	GLN

### 5.3.3 RNA [i](#)

There are no RNA molecules in this entry.

### 5.4 Non-standard residues in protein, DNA, RNA chains [i](#)

There are no non-standard protein/DNA/RNA residues in this entry.

### 5.5 Carbohydrates [i](#)

There are no oligosaccharides in this entry.

### 5.6 Ligand geometry [i](#)

2 ligands are modelled in this entry.

In the following table, the Counts columns list the number of bonds (or angles) for which Mogul statistics could be retrieved, the number of bonds (or angles) that are observed in the model and the number of bonds (or angles) that are defined in the Chemical Component Dictionary. The



Link column lists molecule types, if any, to which the group is linked. The Z score for a bond length (or angle) is the number of standard deviations the observed value is removed from the expected value. A bond length (or angle) with  $|Z| > 2$  is considered an outlier worth inspection. RMSZ is the root-mean-square of all Z scores of the bond lengths (or angles).

Mol	Type	Chain	Res	Link	Bond lengths			Bond angles		
					Counts	RMSZ	# Z  > 2	Counts	RMSZ	# Z  > 2
6	ATP	L	501	-	28,33,33	0.71	0	34,52,52	0.94	1 (2%)
6	ATP	J	401	-	28,33,33	0.65	0	34,52,52	0.93	1 (2%)

In the following table, the Chirals column lists the number of chiral outliers, the number of chiral centers analysed, the number of these observed in the model and the number defined in the Chemical Component Dictionary. Similar counts are reported in the Torsion and Rings columns. '2' means no outliers of that kind were identified.

Mol	Type	Chain	Res	Link	Chirals	Torsions	Rings
6	ATP	L	501	-	-	1/18/38/38	0/3/3/3
6	ATP	J	401	-	-	1/18/38/38	0/3/3/3

There are no bond length outliers.

All (2) bond angle outliers are listed below:

Mol	Chain	Res	Type	Atoms	Z	Observed(°)	Ideal(°)
6	L	501	ATP	C5-C6-N6	2.32	123.84	120.31
6	J	401	ATP	C5-C6-N6	2.29	123.81	120.31

There are no chirality outliers.

All (2) torsion outliers are listed below:

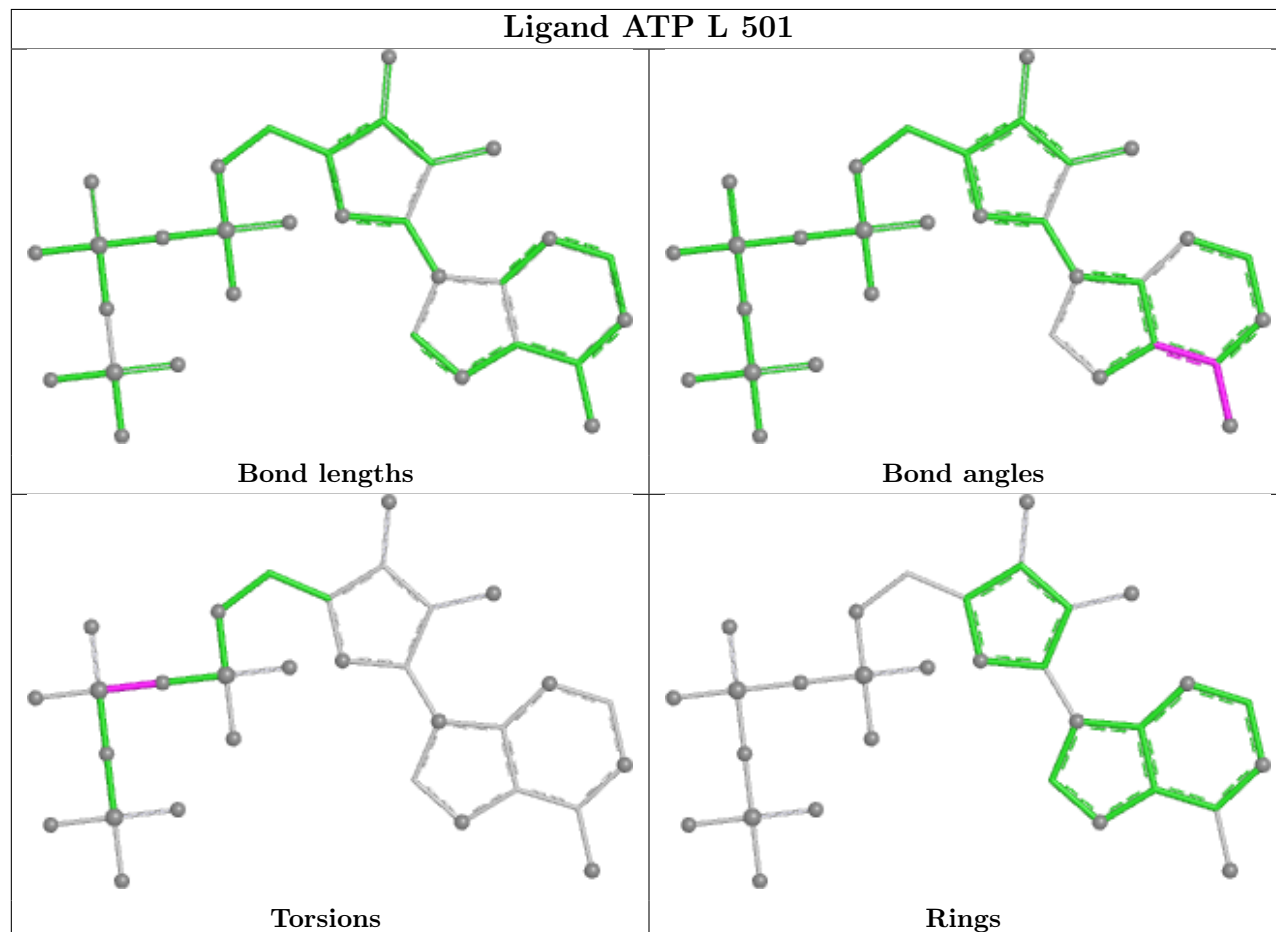
Mol	Chain	Res	Type	Atoms
6	J	401	ATP	PA-O3A-PB-O1B
6	L	501	ATP	PA-O3A-PB-O2B

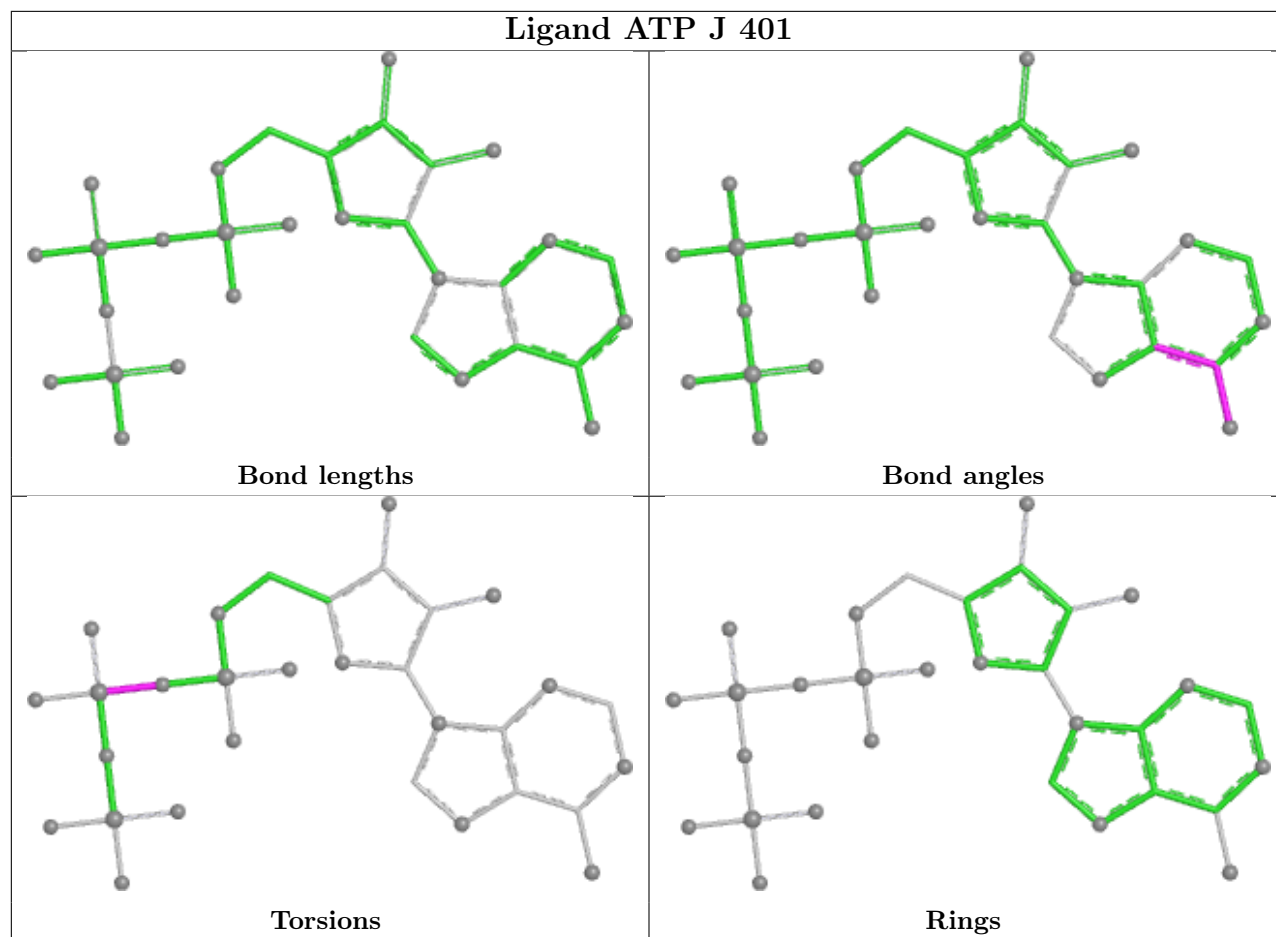
There are no ring outliers.

No monomer is involved in short contacts.

The following is a two-dimensional graphical depiction of Mogul quality analysis of bond lengths, bond angles, torsion angles, and ring geometry for all instances of the Ligand of Interest. In addition, ligands with molecular weight  $> 250$  and outliers as shown on the validation Tables will also be included. For torsion angles, if less than 5% of the Mogul distribution of torsion angles is within 10 degrees of the torsion angle in question, then that torsion angle is considered an outlier. Any bond that is central to one or more torsion angles identified as an outlier by Mogul will be highlighted in the graph. For rings, the root-mean-square deviation (RMSD) between the ring

in question and similar rings identified by Mogul is calculated over all ring torsion angles. If the average RMSD is greater than 60 degrees and the minimal RMSD between the ring in question and any Mogul-identified rings is also greater than 60 degrees, then that ring is considered an outlier. The outliers are highlighted in purple. The color gray indicates Mogul did not find sufficient equivalents in the CSD to analyse the geometry.





## 5.7 Other polymers [i](#)

There are no such residues in this entry.

## 5.8 Polymer linkage issues [i](#)

There are no chain breaks in this entry.

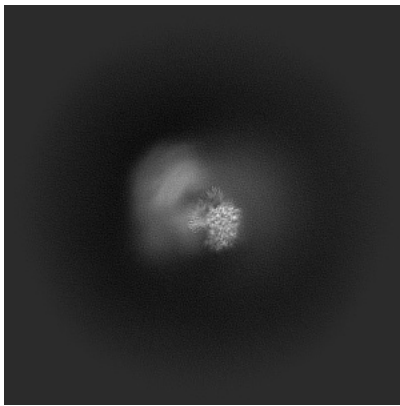
## 6 Map visualisation [i](#)

This section contains visualisations of the EMDB entry EMD-45252. These allow visual inspection of the internal detail of the map and identification of artifacts.

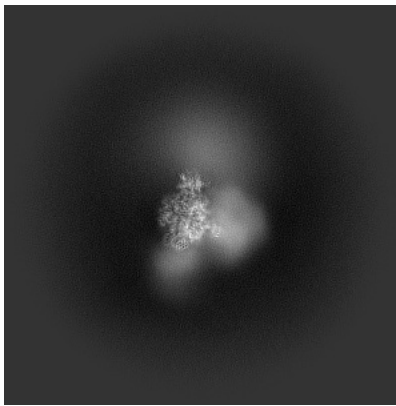
Images derived from a raw map, generated by summing the deposited half-maps, are presented below the corresponding image components of the primary map to allow further visual inspection and comparison with those of the primary map.

### 6.1 Orthogonal projections [i](#)

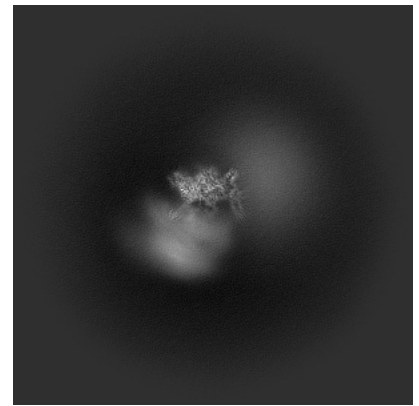
#### 6.1.1 Primary map



X

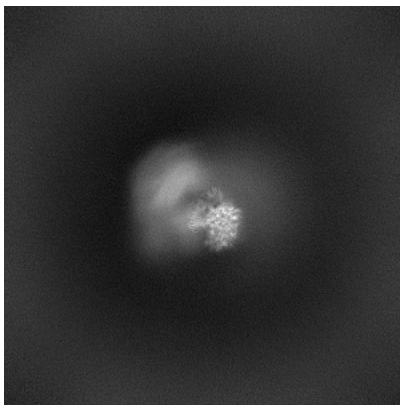


Y

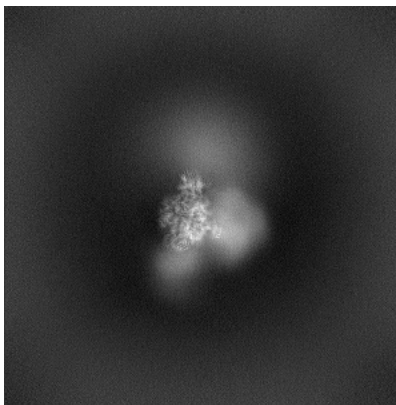


Z

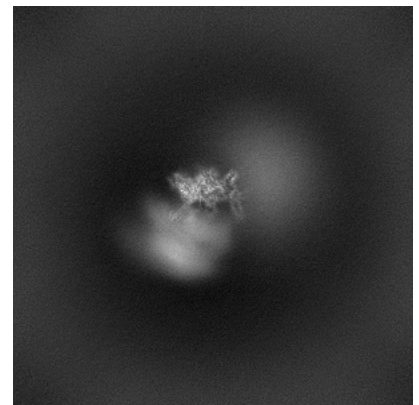
#### 6.1.2 Raw map



X



Y

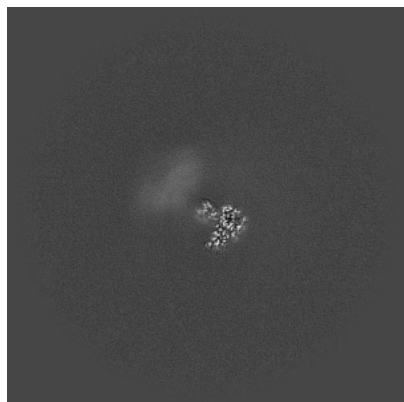


Z

The images above show the map projected in three orthogonal directions.

## 6.2 Central slices [i](#)

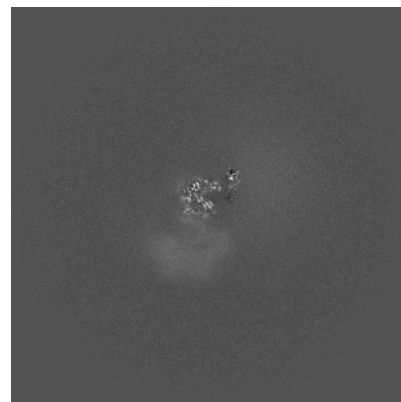
### 6.2.1 Primary map



X Index: 256

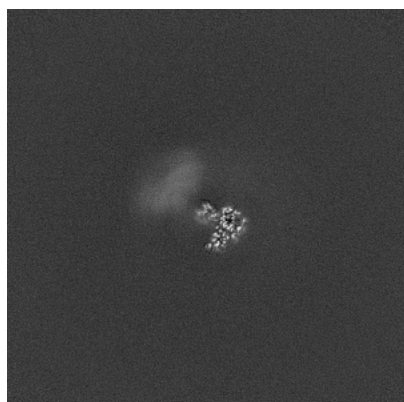


Y Index: 256



Z Index: 256

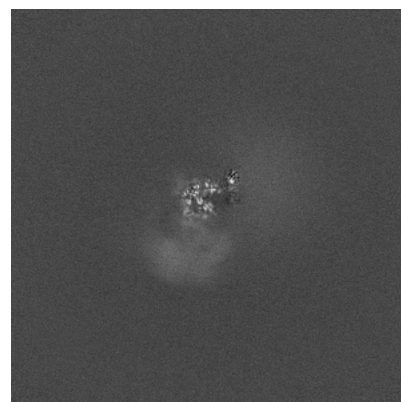
### 6.2.2 Raw map



X Index: 256



Y Index: 256

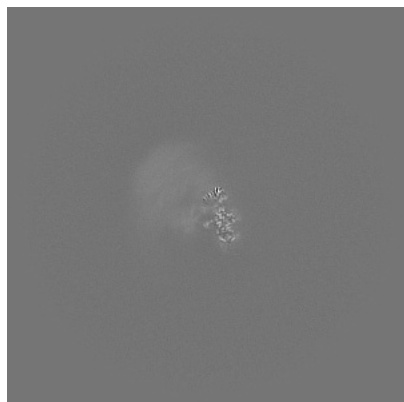


Z Index: 256

The images above show central slices of the map in three orthogonal directions.

## 6.3 Largest variance slices [i](#)

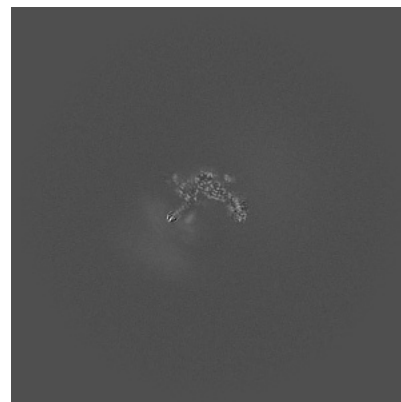
### 6.3.1 Primary map



X Index: 221

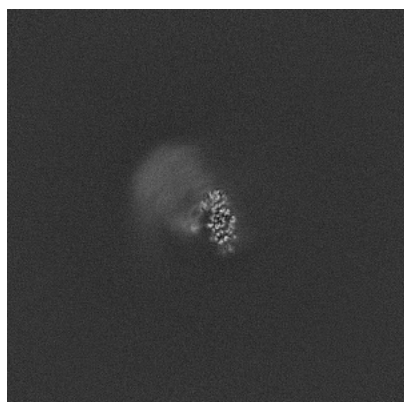


Y Index: 274

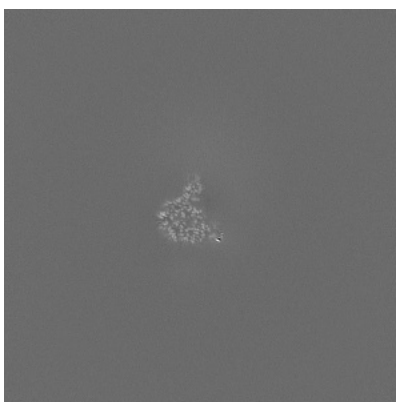


Z Index: 230

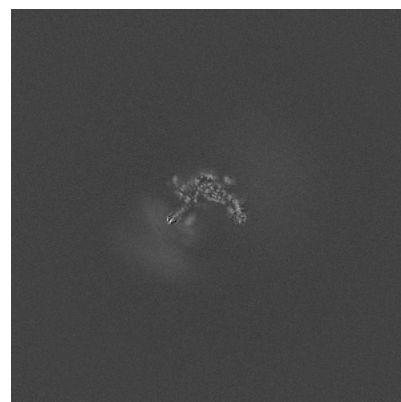
### 6.3.2 Raw map



X Index: 227



Y Index: 274

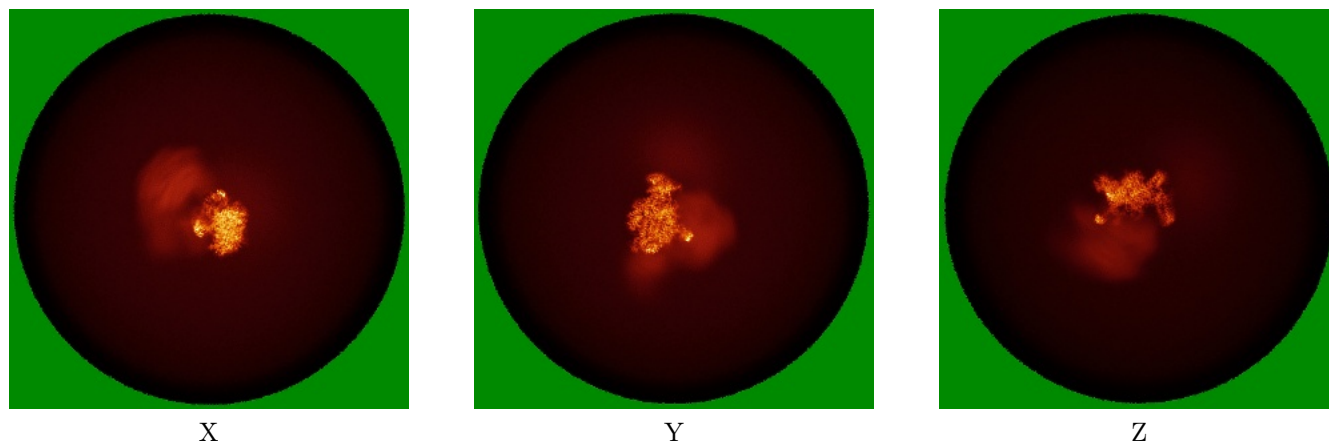


Z Index: 231

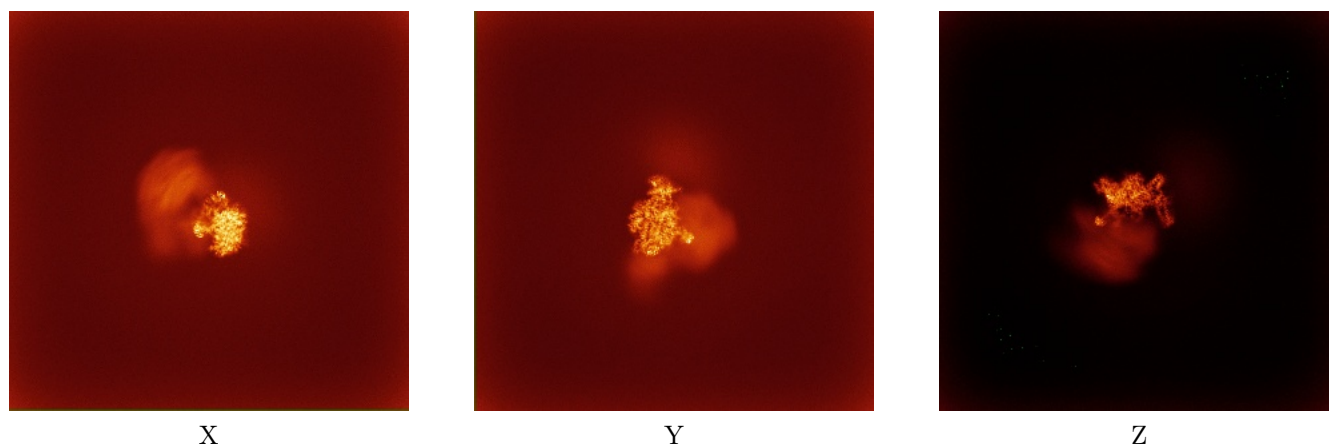
The images above show the largest variance slices of the map in three orthogonal directions.

## 6.4 Orthogonal standard-deviation projections (False-color) [i](#)

### 6.4.1 Primary map



### 6.4.2 Raw map



The images above show the map standard deviation projections with false color in three orthogonal directions. Minimum values are shown in green, max in blue, and dark to light orange shades represent small to large values respectively.

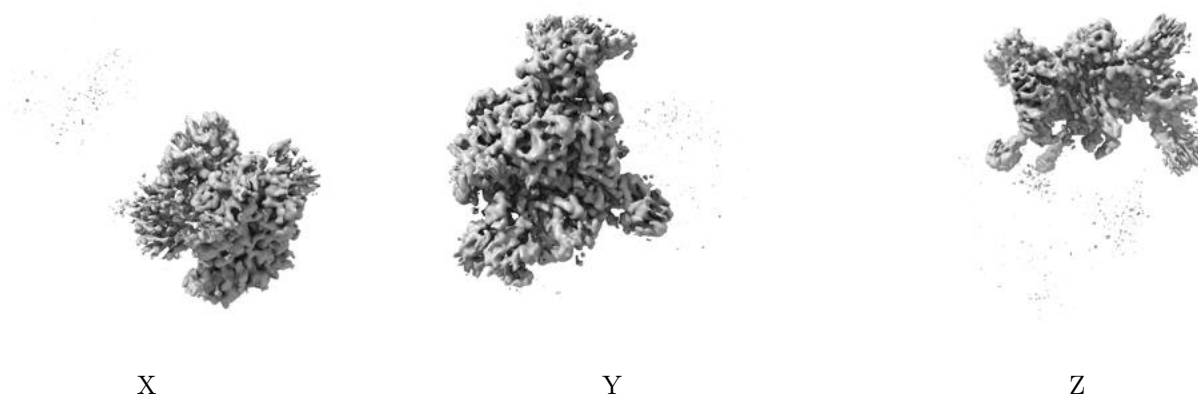
## 6.5 Orthogonal surface views [i](#)

### 6.5.1 Primary map



The images above show the 3D surface view of the map at the recommended contour level 0.57. These images, in conjunction with the slice images, may facilitate assessment of whether an appropriate contour level has been provided.

### 6.5.2 Raw map



These images show the 3D surface of the raw map. The raw map's contour level was selected so that its surface encloses the same volume as the primary map does at its recommended contour level.

## 6.6 Mask visualisation [i](#)

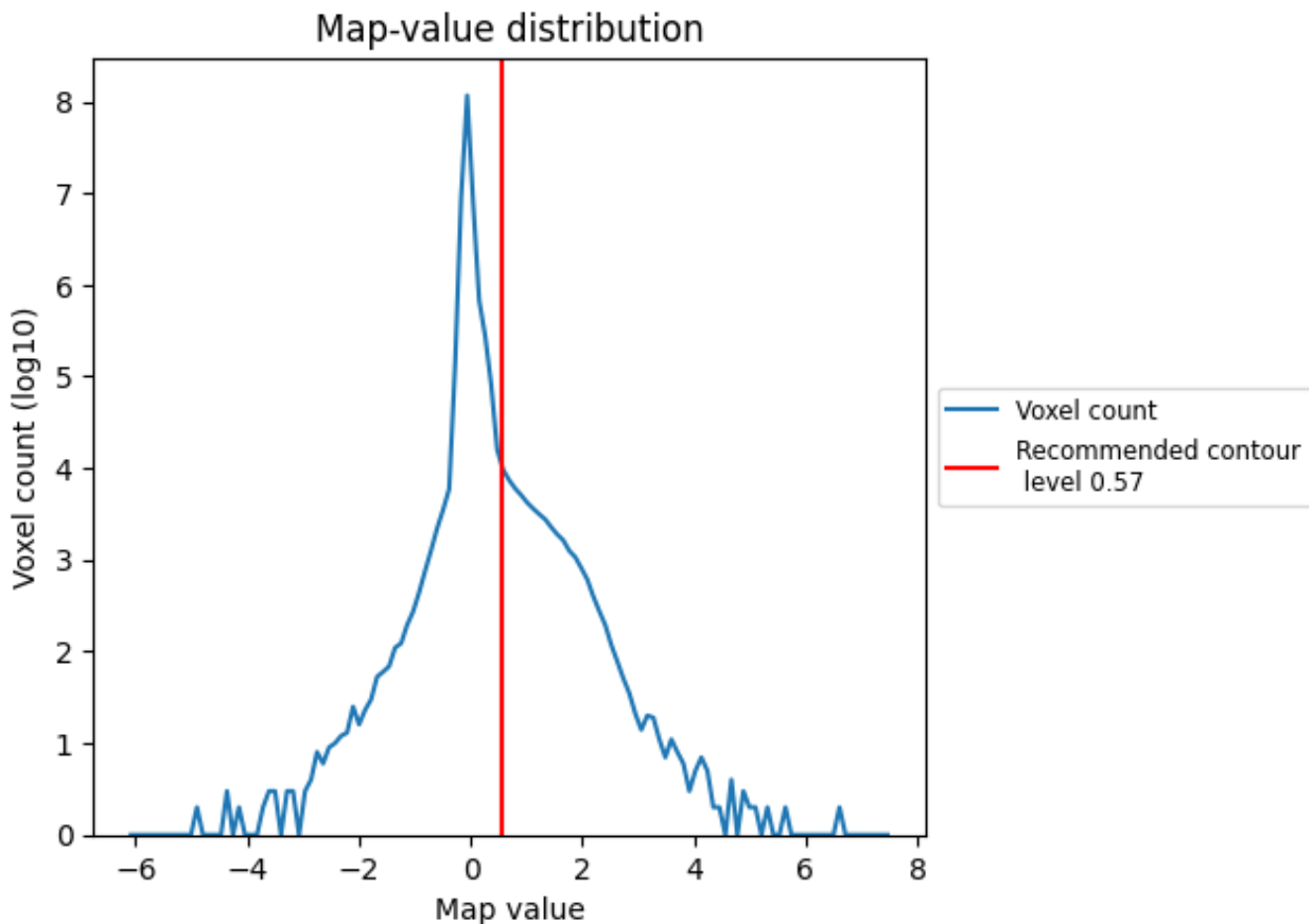
This section was not generated. No masks/segmentation were deposited.



## 7 Map analysis [i](#)

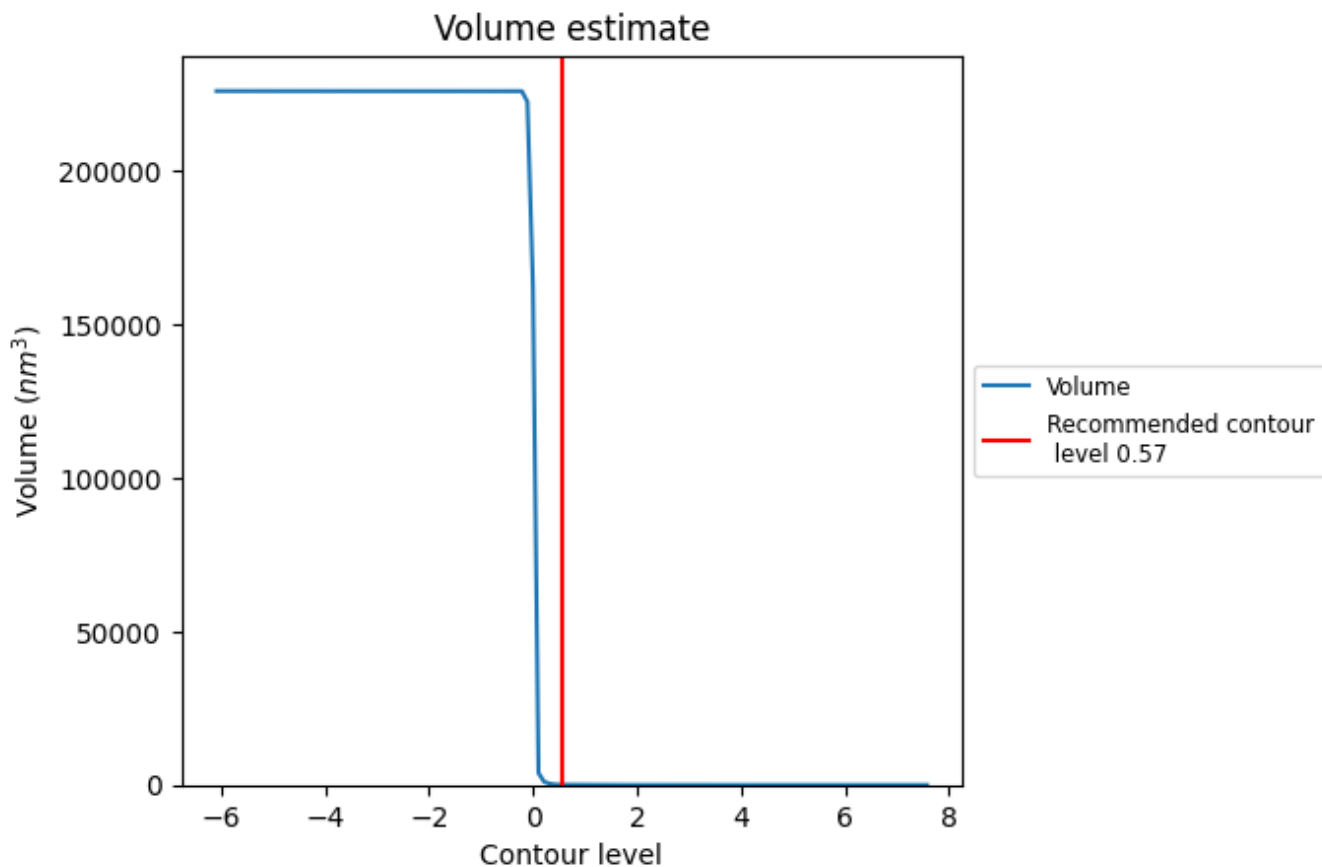
This section contains the results of statistical analysis of the map.

### 7.1 Map-value distribution [i](#)



The map-value distribution is plotted in 128 intervals along the x-axis. The y-axis is logarithmic. A spike in this graph at zero usually indicates that the volume has been masked.

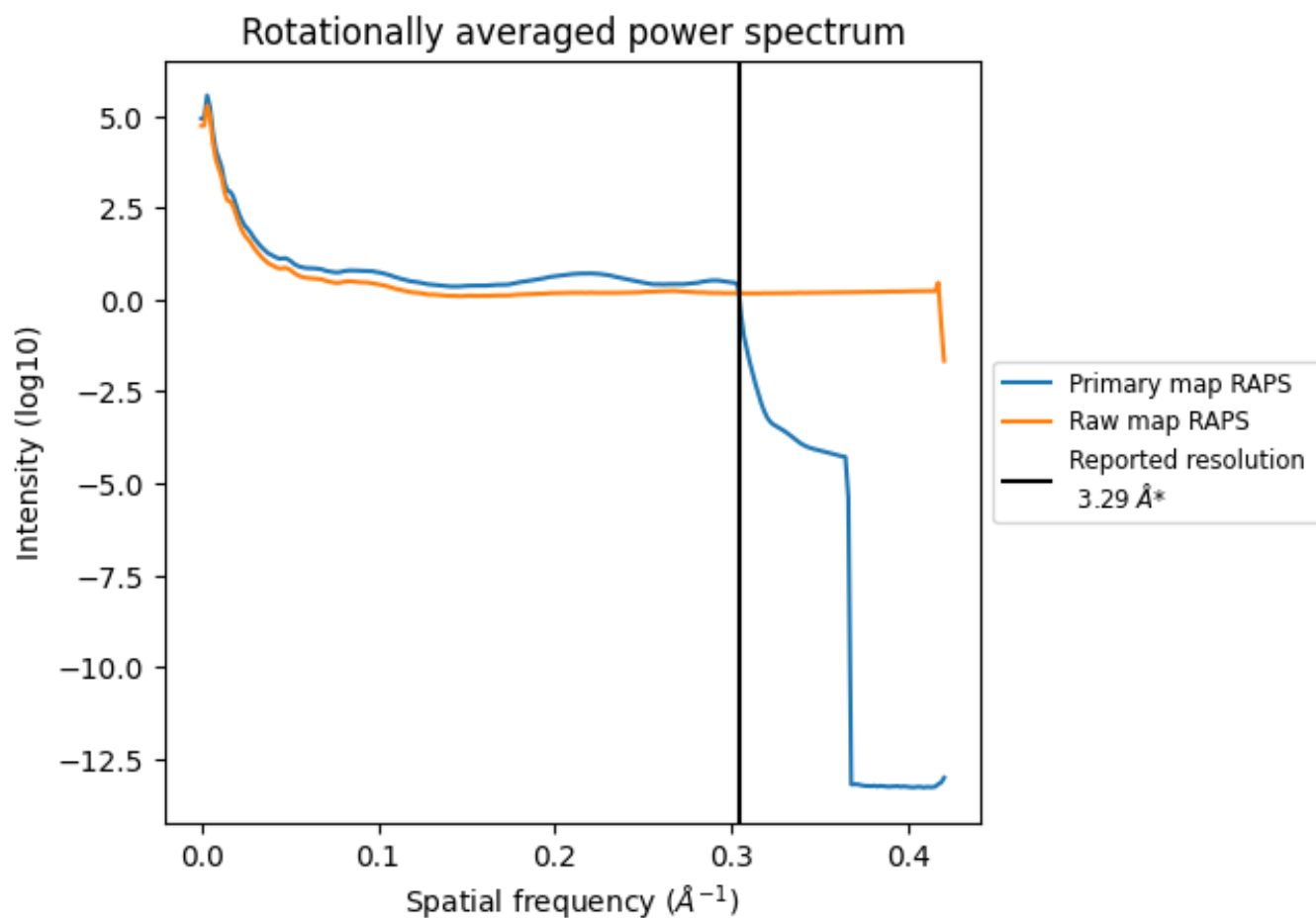
## 7.2 Volume estimate [i](#)



The volume at the recommended contour level is 92 nm<sup>3</sup>; this corresponds to an approximate mass of 83 kDa.

The volume estimate graph shows how the enclosed volume varies with the contour level. The recommended contour level is shown as a vertical line and the intersection between the line and the curve gives the volume of the enclosed surface at the given level.

### 7.3 Rotationally averaged power spectrum [i](#)

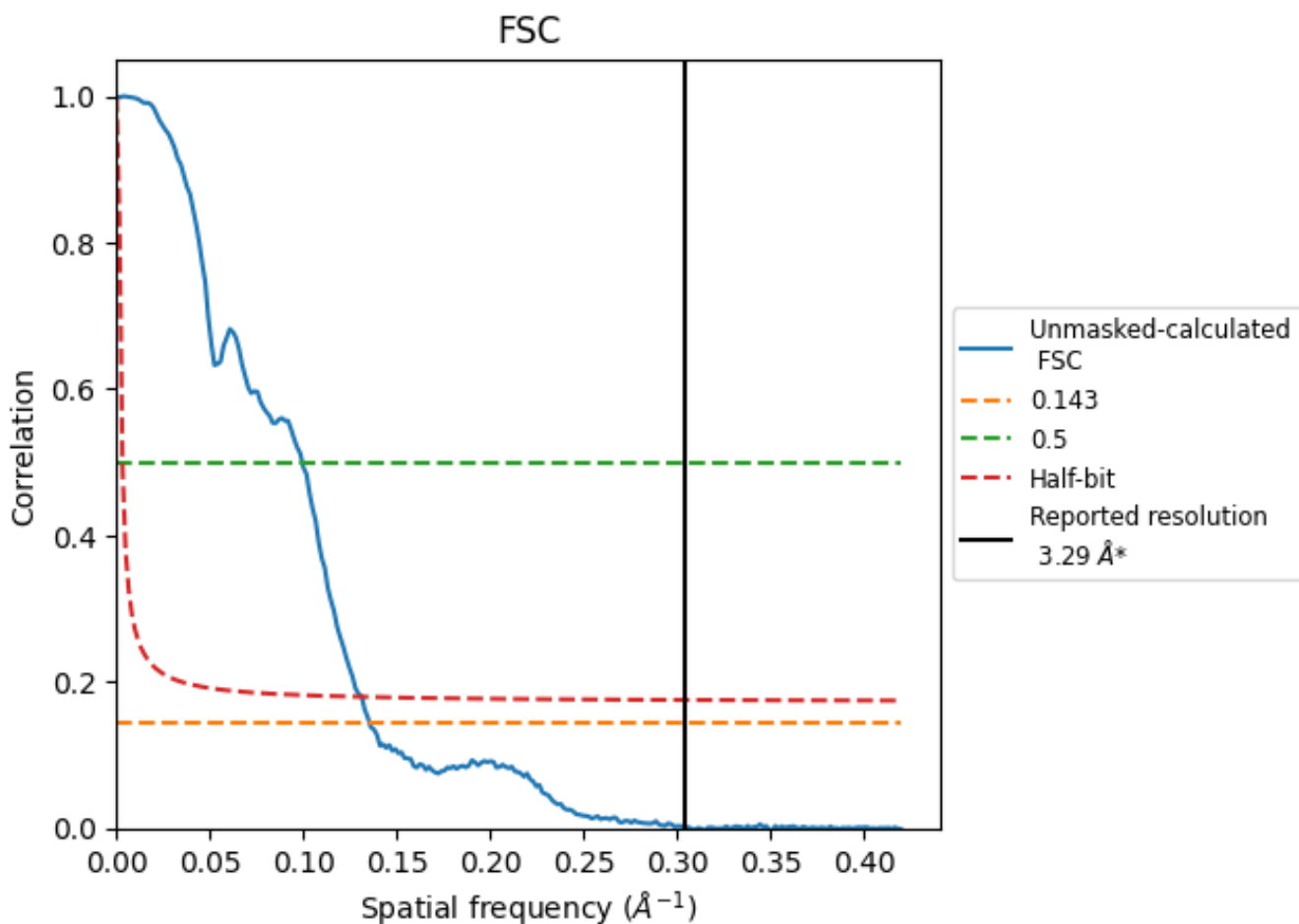


\*Reported resolution corresponds to spatial frequency of 0.304 Å<sup>-1</sup>

## 8 Fourier-Shell correlation [i](#)

Fourier-Shell Correlation (FSC) is the most commonly used method to estimate the resolution of single-particle and subtomogram-averaged maps. The shape of the curve depends on the imposed symmetry, mask and whether or not the two 3D reconstructions used were processed from a common reference. The reported resolution is shown as a black line. A curve is displayed for the half-bit criterion in addition to lines showing the 0.143 gold standard cut-off and 0.5 cut-off.

### 8.1 FSC [i](#)



\*Reported resolution corresponds to spatial frequency of 0.304 Å<sup>-1</sup>

## 8.2 Resolution estimates [i](#)

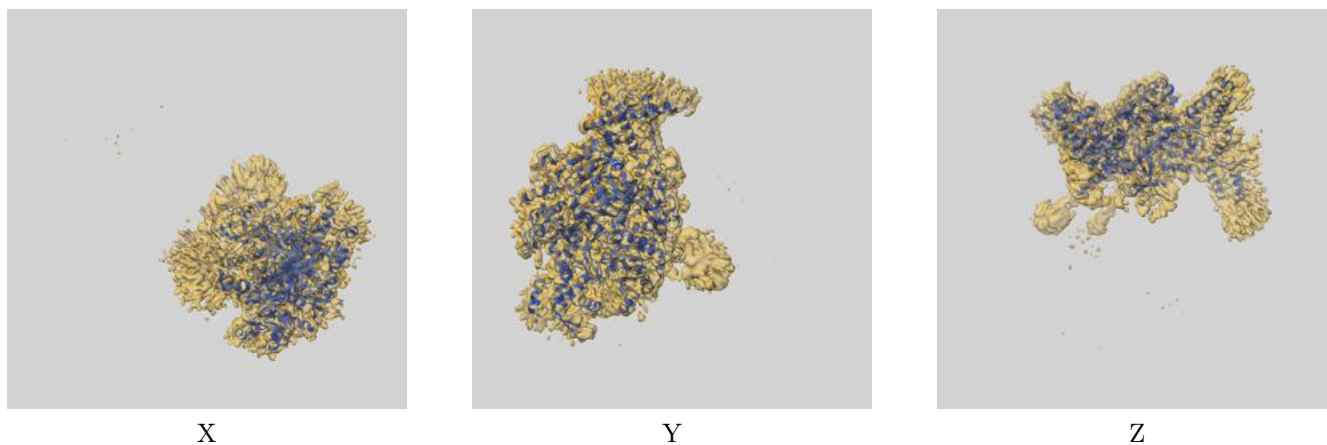
Resolution estimate (Å)	Estimation criterion (FSC cut-off)		
	0.143	0.5	Half-bit
Reported by author	3.29	-	-
Author-provided FSC curve	-	-	-
Unmasked-calculated*	7.37	10.05	7.61

\*Resolution estimate based on FSC curve calculated by comparison of deposited half-maps. The value from deposited half-maps intersecting FSC 0.143 CUT-OFF 7.37 differs from the reported value 3.29 by more than 10 %

## 9 Map-model fit [i](#)

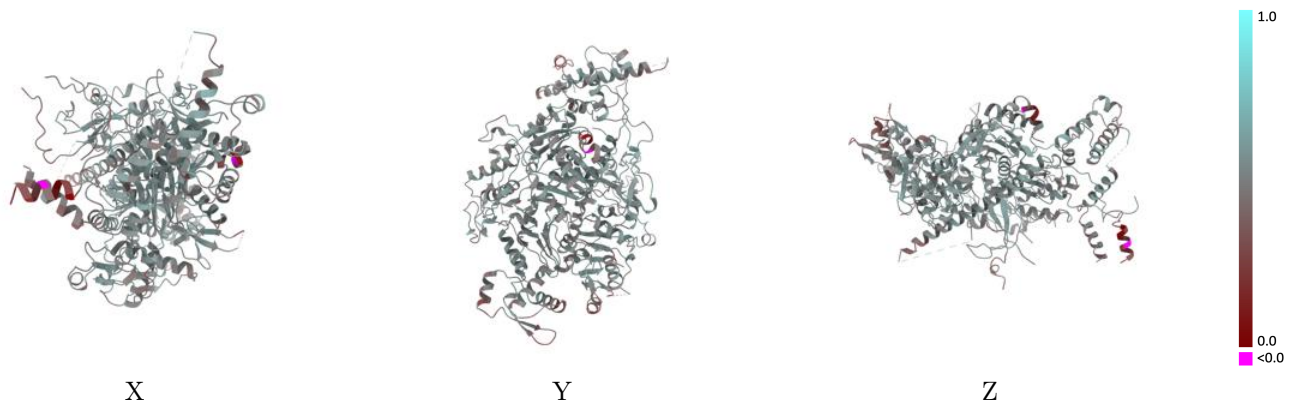
This section contains information regarding the fit between EMDB map EMD-45252 and PDB model 9C6N. Per-residue inclusion information can be found in section 3 on page 5.

### 9.1 Map-model overlay [i](#)



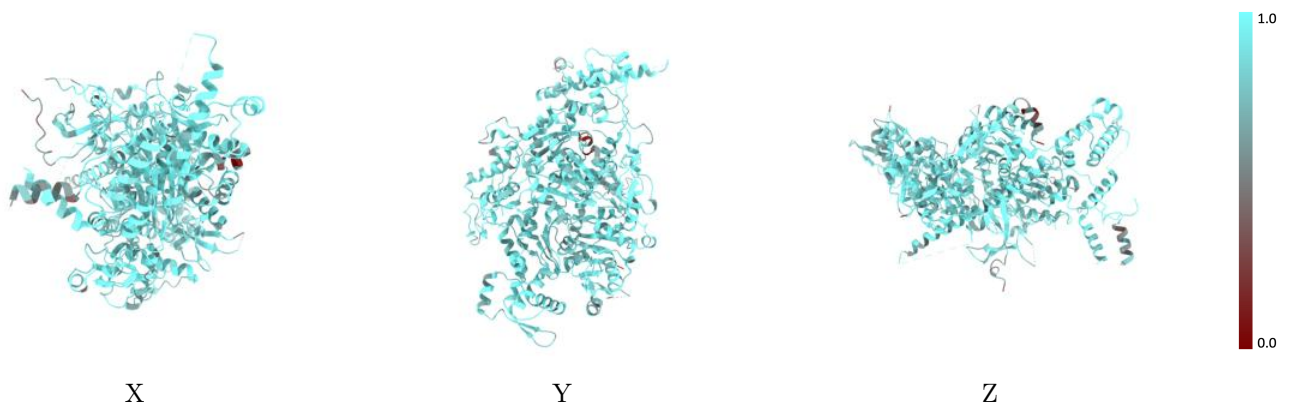
The images above show the 3D surface view of the map at the recommended contour level 0.57 at 50% transparency in yellow overlaid with a ribbon representation of the model coloured in blue. These images allow for the visual assessment of the quality of fit between the atomic model and the map.

## 9.2 Q-score mapped to coordinate model [\(i\)](#)



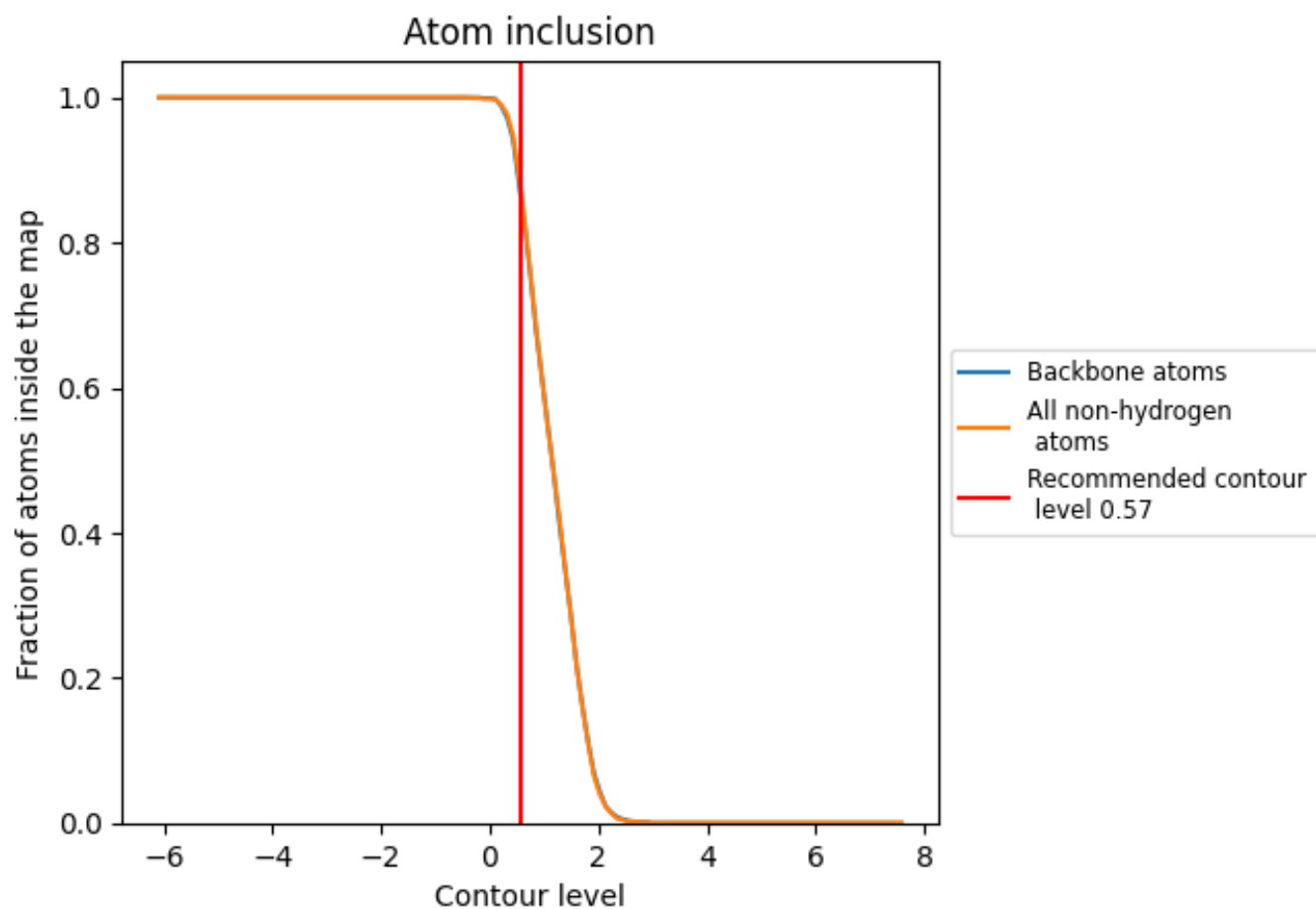
The images above show the model with each residue coloured according to its Q-score. This shows their resolvability in the map with higher Q-score values reflecting better resolvability. Please note: Q-score is calculating the resolvability of atoms, and thus high values are only expected at resolutions at which atoms can be resolved. Low Q-score values may therefore be expected for many entries.

## 9.3 Atom inclusion mapped to coordinate model [\(i\)](#)



The images above show the model with each residue coloured according to its atom inclusion. This shows to what extent they are inside the map at the recommended contour level (0.57).

## 9.4 Atom inclusion [i](#)















At the recommended contour level, 86% of all backbone atoms, 88% of all non-hydrogen atoms, are inside the map.



## 9.5 Map-model fit summary

The table lists the average atom inclusion at the recommended contour level (0.57) and Q-score for the entire model and for each chain.

Chain	Atom inclusion	Q-score
All	 0.8750	 0.5020
G	 0.8570	 0.4640
H	 0.7650	 0.4870
I	 0.9090	 0.5090
J	 0.8880	 0.5050
L	 0.8820	 0.5110

