



Full wwPDB EM Validation Report ⓘ

May 30, 2024 – 10:53 am BST

PDB ID : 8C8R
EMDB ID : EMD-16492
Title : In situ structure of the Nitrosopumilus maritimus S-layer - Composite map between C2 and C6
Authors : von Kuegelgen, A.; Bharat, T.
Deposited on : 2023-01-20
Resolution : 3.50 Å(reported)

This is a Full wwPDB EM Validation Report for a publicly released PDB entry.

We welcome your comments at validation@mail.wwpdb.org

A user guide is available at

<https://www.wwpdb.org/validation/2017/EMValidationReportHelp>

with specific help available everywhere you see the ⓘ symbol.

The types of validation reports are described at

<http://www.wwpdb.org/validation/2017/FAQs#types>.

The following versions of software and data (see [references ⓘ](#)) were used in the production of this report:

EMDB validation analysis : 0.0.1.dev92
MolProbity : 4.02b-467
Percentile statistics : 20191225.v01 (using entries in the PDB archive December 25th 2019)
MapQ : 1.9.13
Ideal geometry (proteins) : Engh & Huber (2001)
Ideal geometry (DNA, RNA) : Parkinson et al. (1996)
Validation Pipeline (wwPDB-VP) : 2.36.2

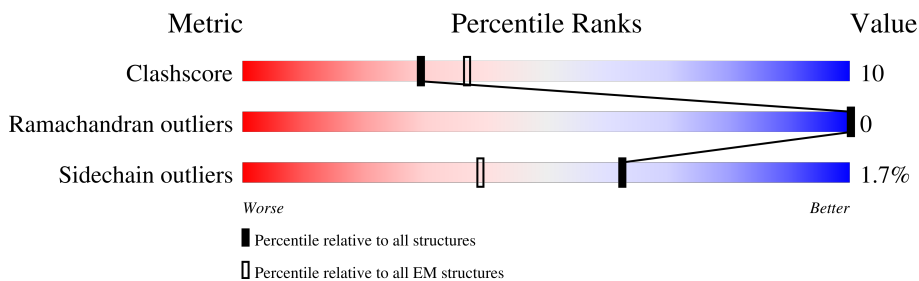
1 Overall quality at a glance

The following experimental techniques were used to determine the structure:

ELECTRON MICROSCOPY

The reported resolution of this entry is 3.50 Å.

Percentile scores (ranging between 0-100) for global validation metrics of the entry are shown in the following graphic. The table shows the number of entries on which the scores are based.



Metric	Whole archive (#Entries)	EM structures (#Entries)
Clashscore	158937	4297
Ramachandran outliers	154571	4023
Sidechain outliers	154315	3826

The table below summarises the geometric issues observed across the polymeric chains and their fit to the map. The red, orange, yellow and green segments of the bar indicate the fraction of residues that contain outliers for ≥ 3 , 2, 1 and 0 types of geometric quality criteria respectively. A grey segment represents the fraction of residues that are not modelled. The numeric value for each fraction is indicated below the corresponding segment, with a dot representing fractions $\leq 5\%$. The upper red bar (where present) indicates the fraction of residues that have poor fit to the EM map (all-atom inclusion $< 40\%$). The numeric value is given above the bar.

Mol	Chain	Length	Quality of chain
1	A	1734	
1	B	1734	
1	C	1734	
1	D	1734	
1	E	1734	
1	F	1734	

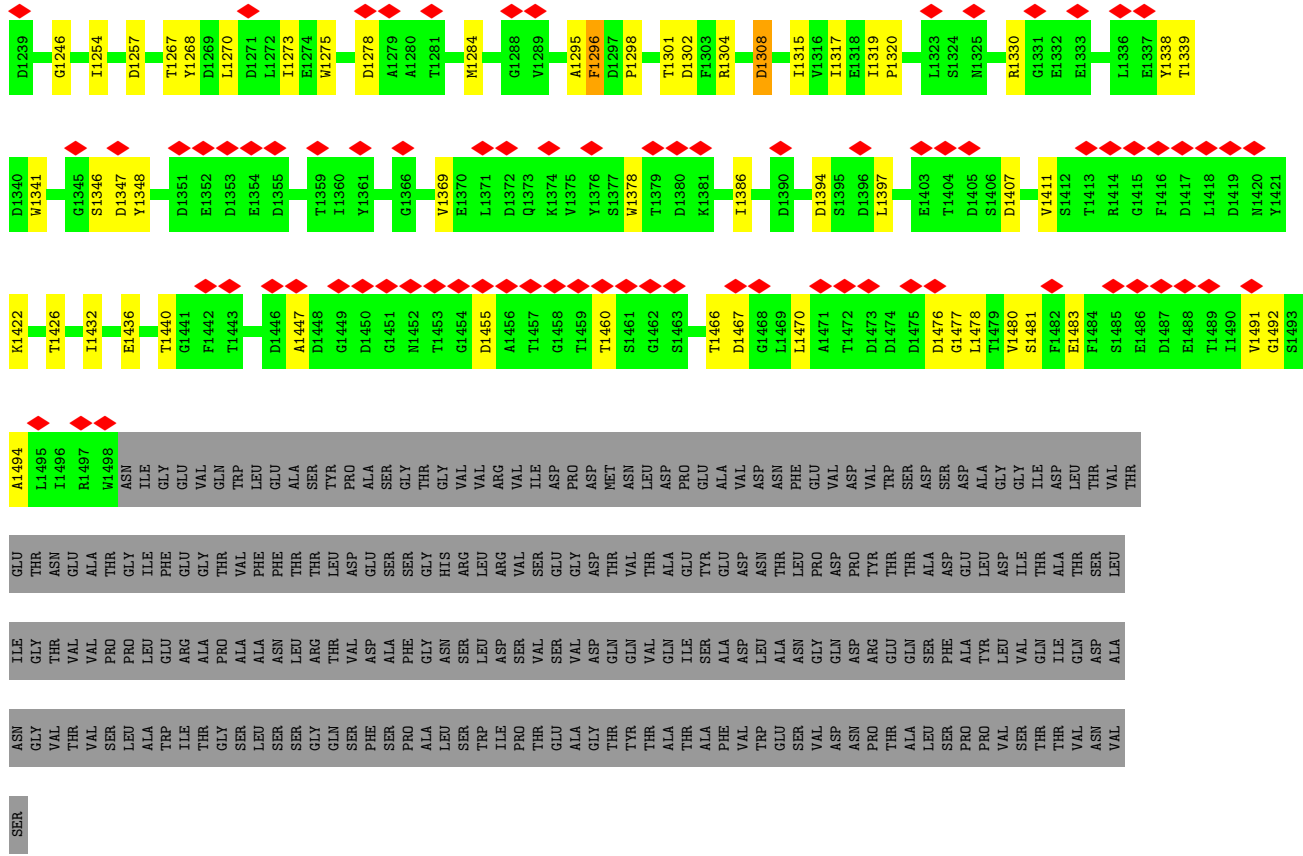
2 Entry composition

There is only 1 type of molecule in this entry. The entry contains 65154 atoms, of which 0 are hydrogens and 0 are deuteriums.

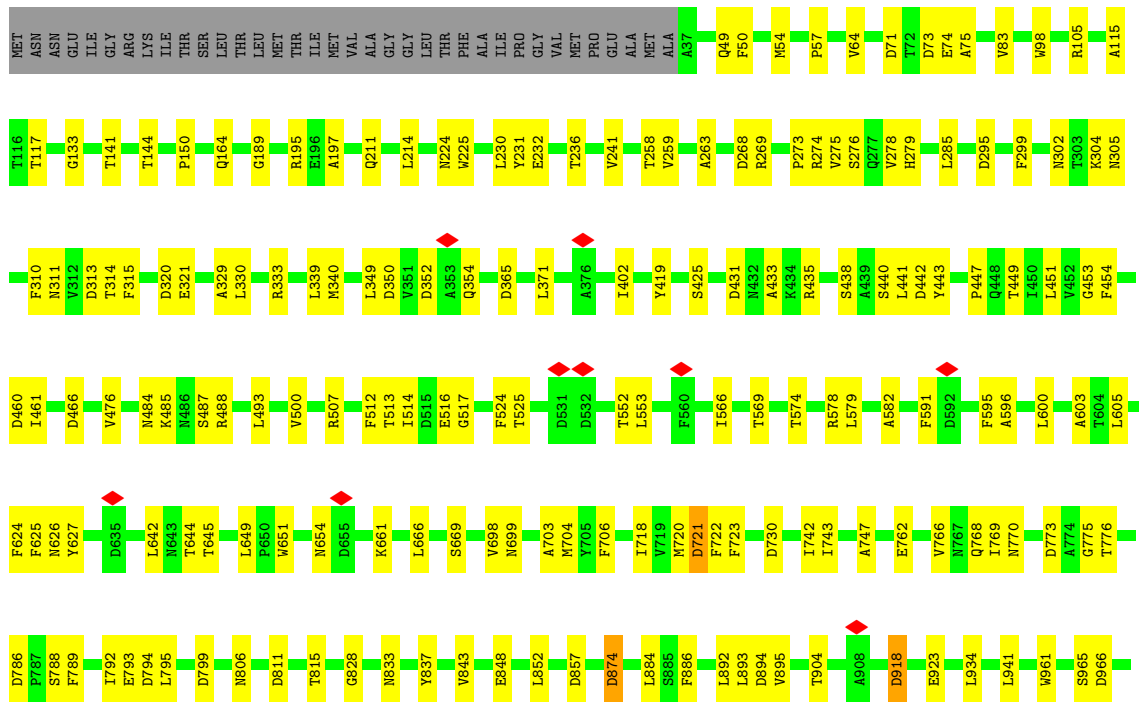
In the tables below, the AltConf column contains the number of residues with at least one atom in alternate conformation and the Trace column contains the number of residues modelled with at most 2 atoms.

- Molecule 1 is a protein called Cell surface protein.

Mol	Chain	Residues	Atoms					AltConf	Trace
			Total	C	N	O	S		
1	A	1462	Total 10859	C 6683	N 1751	O 2407	S 18	0	0
1	B	1462	Total 10859	C 6683	N 1751	O 2407	S 18	0	0
1	C	1462	Total 10859	C 6683	N 1751	O 2407	S 18	0	0
1	D	1462	Total 10859	C 6683	N 1751	O 2407	S 18	0	0
1	E	1462	Total 10859	C 6683	N 1751	O 2407	S 18	0	0
1	F	1462	Total 10859	C 6683	N 1751	O 2407	S 18	0	0



• Molecule 1: Cell surface protein



THR	THR	SER	D1448	D1355	L1270	S1169	H1050	D918	L605	D466	L285	D106	MET
LEU	TYR	TYR	G1449	H1169	L1273	H1169	A1051	E923	F624	V476	D295	A115	ASN
ASP	PRO	ALA	D1450	D1170	E1274	T1052	T1052	E923	F625	V477	D295	A116	ASN
GLU	GLY	GLY	G1451	T1174	W1275	G1053	G1053	L934	M826	I478	F299	T117	ILE
SER	THR	THR	M1452	T1179	D1278	S1056	S1056	L941	M484	M484	N302	S120	ARG
GLY	GLY	VAL	G1366	T1180	A1279	E1083	E1083	G953	K485	K485	N311	G121	LYS
HIS	VAL	ARG	V1369	A1183	T1281	T1066	T1066	W961	M486	M486	N311	G121	ILE
LEU	ARG	ARG	D1372	R1187	M1284	G1067	G1067	G953	S487	S487	V312	G133	THR
LEU	VAL	VAL	Q1373	D1190	G1288	D1068	D1068	S965	R488	R488	D313	G133	SER
VAL	ILE	VAL	K1374	G1191	L1289	L1070	L1070	D966	T314	T314	D313	T141	SER
SER	ASP	ASP	V1375	G1192	V1289	L1089	L1089	Y974	F315	F315	D313	T141	LEU
GLY	PRO	PRO	Y1376	A1193	F1295	T1071	T1071	T980	A329	A329	L330	I149	LEU
GLY	ASP	MET	S1377	A1194	P1298	I1071	I1071	W851	L330	L330	L330	P150	MET
ASP	ASP	ASN	W1378	T1379	L1295	M1083	M1083	M654	R507	R507	R333	Q164	ILE
THR	LEU	LEU	W1378	T1379	F1296	A1193	A1193	M654	F512	F512	L339	Q164	VAL
THR	LEU	LEU	D1380	T1380	P1297	S1194	S1194	D855	T513	T513	M340	G189	ALA
ALA	PRO	PRO	D1380	T1380	L1297	S1194	S1194	D855	T514	T514	M340	G189	ALA
TYR	GLU	GLU	K1381	T1381	T1301	Q1195	Q1195	V859	D515	D515	L349	R195	GLY
GLY	GLU	VAL	I1386	T1386	D1302	G1196	G1196	D860	E516	E516	L349	R195	GLY
TYR	GLU	VAL	T1466	T1466	F1303	I1197	I1197	K661	G517	G517	A197	A197	THR
GLU	VAL	ASP	G1468	G1468	R1304	E1197	E1197	K661	F524	F524	A203	A203	PHE
ASP	ASN	ASN	L1469	L1469	D1308	G1203	G1203	K661	T525	T525	A203	A203	ALA
ASN	THR	PHE	L1470	L1470	D1308	T1101	T1101	L666	D531	D531	A203	A203	ALA
THR	LEU	LEU	A1471	D1380	I1315	R1101	R1101	L666	D532	D532	A203	A203	ALA
LEU	LEU	VAL	T1472	D1394	I1316	R1102	R1102	L666	I540	I540	A203	A203	ALA
PRO	VAL	VAL	T1472	D1394	W1316	R1102	R1102	L666	T552	T552	A203	A203	ALA
ASP	ASP	ASP	D1473	S1395	I1317	R1102	R1102	L666	T552	T552	A203	A203	ALA
PRO	VAL	VAL	D1473	S1395	I1318	R1102	R1102	L666	T552	T552	A203	A203	ALA
TYR	TRP	TRP	D1474	L1397	I1319	R1102	R1102	L666	T552	T552	A203	A203	ALA
THR	SER	SER	D1475	L1397	P1320	R1102	R1102	L666	T552	T552	A203	A203	ALA
ALA	THR	THR	E1403	E1403	T1404	R1102	R1102	L666	T552	T552	A203	A203	ALA
THR	ASP	ASP	T1404	T1404	D1405	R1102	R1102	L666	T552	T552	A203	A203	ALA
ASP	ASP	ASP	T1404	T1404	S1406	R1102	R1102	L666	T552	T552	A203	A203	ALA
GLU	GLY	GLY	D1405	D1405	S1324	R1102	R1102	L666	T552	T552	A203	A203	ALA
LEU	GLY	GLY	V1480	V1480	S1324	R1102	R1102	L666	T552	T552	A203	A203	ALA
ASP	GLY	ILE	S1481	S1481	M1325	R1102	R1102	L666	T552	T552	A203	A203	ALA
ILE	ILE	ILE	F1482	F1482	M1325	R1102	R1102	L666	T552	T552	A203	A203	ALA
THR	ASP	ASP	F1483	F1483	R1330	R1102	R1102	L666	T552	T552	A203	A203	ALA
ALA	LEU	LEU	F1484	F1484	G1331	R1102	R1102	L666	T552	T552	A203	A203	ALA
THR	THR	THR	V1411	V1411	E1332	R1102	R1102	L666	T552	T552	A203	A203	ALA
SER	VAL	VAL	S1412	S1412	E1333	R1102	R1102	L666	T552	T552	A203	A203	ALA
LEU	THR	THR	T1413	T1413	E1333	R1102	R1102	L666	T552	T552	A203	A203	ALA
ILE	GLU	GLU	D1487	D1487	L1336	R1102	R1102	L666	T552	T552	A203	A203	ALA
GLY	THR	THR	E1488	E1488	F1337	R1102	R1102	L666	T552	T552	A203	A203	ALA
THR	ASN	ASN	T1489	T1489	Y1338	R1102	R1102	L666	T552	T552	A203	A203	ALA
VAL	GLU	GLU	G1415	G1415	T1339	R1102	R1102	L666	T552	T552	A203	A203	ALA
VAL	ALA	ALA	F1416	F1416	W1341	R1102	R1102	L666	T552	T552	A203	A203	ALA
PRO	THR	THR	D1417	D1417	G1345	R1102	R1102	L666	T552	T552	A203	A203	ALA
PRO	THR	THR	L1418	L1418	S1346	R1102	R1102	L666	T552	T552	A203	A203	ALA
PRO	GLY	GLY	D1419	D1419	I1347	R1102	R1102	L666	T552	T552	A203	A203	ALA
LEU	ILE	ILE	S1493	S1493	Y1346	R1102	R1102	L666	T552	T552	A203	A203	ALA
LEU	PHE	PHE	A1494	A1494	Y1346	R1102	R1102	L666	T552	T552	A203	A203	ALA
ARG	GLU	GLU	L1495	L1495	E1436	R1102	R1102	L666	T552	T552	A203	A203	ALA
ALA	GLY	GLY	I1496	I1496	E1436	R1102	R1102	L666	T552	T552	A203	A203	ALA
PRO	THR	THR	R1497	R1497	E1436	R1102	R1102	L666	T552	T552	A203	A203	ALA
ALA	VAL	PHE	W1498	W1498	E1436	R1102	R1102	L666	T552	T552	A203	A203	ALA
ASN	PHE	PHE	ASN	ASN	E1436	R1102	R1102	L666	T552	T552	A203	A203	ALA
ILE	ILE	ILE	T1440	T1440	D1351	R1102	R1102	L666	T552	T552	A203	A203	ALA
GLY	GLY	GLY	G1441	G1441	E1362	R1102	R1102	L666	T552	T552	A203	A203	ALA
GLU	GLU	GLU	F1442	F1442	D1353	R1102	R1102	L666	T552	T552	A203	A203	ALA
VAL	VAL	VAL	T1443	T1443	E1364	R1102	R1102	L666	T552	T552	A203	A203	ALA
GLN	TRP	TRP	D1446	D1446	E1364	R1102	R1102	L666	T552	T552	A203	A203	ALA
LEU	LEU	LEU	G1447	G1447	E1364	R1102	R1102	L666	T552	T552	A203	A203	ALA
GLU	GLU	GLU	D1447	D1447	E1364	R1102	R1102	L666	T552	T552	A203	A203	ALA

4 Experimental information

Property	Value	Source
EM reconstruction method	SUBTOMOGRAM AVERAGING	Depositor
Imposed symmetry	POINT, Not provided	
Number of subtomograms used	108621	Depositor
Resolution determination method	OTHER	Depositor
CTF correction method	PHASE FLIPPING AND AMPLITUDE CORRECTION; PseudoSubtomograms as described in Zivanov 2022 (https://elifesciences.org/articles/83724)	Depositor
Microscope	FEI TITAN KRIOS	Depositor
Voltage (kV)	300	Depositor
Electron dose ($e^-/\text{\AA}^2$)	121	Depositor
Minimum defocus (nm)	2000	Depositor
Maximum defocus (nm)	5000	Depositor
Magnification	105000	Depositor
Image detector	GATAN K2 SUMMIT (4k x 4k)	Depositor
Maximum map value	12.055	Depositor
Minimum map value	-6.789	Depositor
Average map value	0.001	Depositor
Map value standard deviation	0.582	Depositor
Recommended contour level	1.45621	Depositor
Map size (\AA)	265.4, 265.4, 265.4	wwPDB
Map dimensions	200, 200, 200	wwPDB
Map angles ($^\circ$)	90.0, 90.0, 90.0	wwPDB
Pixel spacing (\AA)	1.327, 1.327, 1.327	Depositor

5 Model quality [i](#)

5.1 Standard geometry [i](#)

The Z score for a bond length (or angle) is the number of standard deviations the observed value is removed from the expected value. A bond length (or angle) with $|Z| > 5$ is considered an outlier worth inspection. RMSZ is the root-mean-square of all Z scores of the bond lengths (or angles).

Mol	Chain	Bond lengths		Bond angles	
		RMSZ	# Z >5	RMSZ	# Z >5
1	A	0.25	0/11032	0.49	0/15089
1	B	0.25	0/11032	0.49	0/15089
1	C	0.25	0/11032	0.49	0/15089
1	D	0.25	0/11032	0.49	0/15089
1	E	0.25	0/11032	0.49	0/15089
1	F	0.25	0/11032	0.49	0/15089
All	All	0.25	0/66192	0.49	0/90534

There are no bond length outliers.

There are no bond angle outliers.

There are no chirality outliers.

There are no planarity outliers.

5.2 Too-close contacts [i](#)

In the following table, the Non-H and H(model) columns list the number of non-hydrogen atoms and hydrogen atoms in the chain respectively. The H(added) column lists the number of hydrogen atoms added and optimized by MolProbity. The Clashes column lists the number of clashes within the asymmetric unit, whereas Symm-Clashes lists symmetry-related clashes.

Mol	Chain	Non-H	H(model)	H(added)	Clashes	Symm-Clashes
1	A	10859	0	10131	260	0
1	B	10859	0	10136	203	0
1	C	10859	0	10136	234	0
1	D	10859	0	10130	247	0
1	E	10859	0	10135	217	0
1	F	10859	0	10136	236	0
All	All	65154	0	60804	1279	0

The all-atom clashscore is defined as the number of clashes found per 1000 atoms (including hydrogen atoms). The all-atom clashscore for this structure is 10.

All (1279) close contacts within the same asymmetric unit are listed below, sorted by their clash magnitude.

Atom-1	Atom-2	Interatomic distance (Å)	Clash overlap (Å)
1:A:269:ARG:HH12	1:A:485:LYS:C	0.98	1.48
1:C:435:ARG:NH1	1:C:812:GLY:HA3	1.24	1.44
1:A:269:ARG:HH12	1:A:486:ASN:N	1.17	1.38
1:A:269:ARG:NH1	1:A:485:LYS:C	1.76	1.37
1:B:354:GLN:NE2	1:C:861:ILE:HD11	1.37	1.36
1:E:354:GLN:NE2	1:F:861:ILE:HD11	1.42	1.32
1:F:435:ARG:NH1	1:F:812:GLY:CA	1.88	1.32
1:F:435:ARG:NH1	1:F:812:GLY:HA3	0.97	1.28
1:A:276:SER:HB2	1:A:485:LYS:O	1.34	1.25
1:D:435:ARG:NH2	1:D:811:ASP:O	1.73	1.21
1:D:276:SER:HB2	1:D:485:LYS:O	1.45	1.15
1:A:435:ARG:NH2	1:A:811:ASP:O	1.79	1.14
1:C:435:ARG:NH1	1:C:812:GLY:CA	2.10	1.14
1:D:268:ASP:OD2	1:D:488:ARG:NH1	1.81	1.13
1:A:269:ARG:NH1	1:A:486:ASN:N	1.90	1.10
1:D:269:ARG:HG3	1:D:487:SER:HB3	1.31	1.10
1:F:435:ARG:HH12	1:F:812:GLY:CA	1.50	1.10
1:B:275:VAL:HG12	1:B:485:LYS:HD3	1.33	1.06
1:F:423:ASP:OD2	1:F:486:ASN:ND2	1.88	1.05
1:E:275:VAL:HG12	1:E:485:LYS:HD3	1.36	1.04
1:A:435:ARG:NH1	1:A:812:GLY:HA3	1.74	1.01
1:C:435:ARG:CZ	1:C:812:GLY:HA3	1.92	0.99
1:B:354:GLN:NE2	1:C:861:ILE:CD1	2.27	0.97
1:D:273:PRO:CG	1:D:485:LYS:HG2	1.95	0.97
1:F:435:ARG:HH11	1:F:812:GLY:HA3	1.23	0.96
1:E:268:ASP:OD2	1:E:488:ARG:NH1	1.99	0.96
1:F:279:HIS:CD2	1:F:488:ARG:HH22	1.83	0.95
1:B:449:THR:CG2	1:C:858:LEU:HG	1.96	0.95
1:C:435:ARG:HH12	1:C:812:GLY:HA3	1.23	0.94
1:A:273:PRO:CG	1:A:485:LYS:HG2	1.99	0.93
1:A:435:ARG:HH12	1:A:812:GLY:HA3	1.34	0.93
1:A:279:HIS:H	1:A:488:ARG:HH22	1.16	0.92
1:E:354:GLN:NE2	1:F:861:ILE:CD1	2.33	0.91
1:E:275:VAL:CG1	1:E:485:LYS:HD3	2.01	0.91
1:A:276:SER:CB	1:A:485:LYS:O	2.20	0.90
1:D:273:PRO:HG2	1:D:485:LYS:HG2	1.53	0.90
1:B:449:THR:HG22	1:C:858:LEU:HG	1.55	0.89
1:A:863:THR:HG21	1:F:354:GLN:CD	1.93	0.89
1:B:268:ASP:OD2	1:B:488:ARG:NH1	2.05	0.88
1:F:435:ARG:CZ	1:F:812:GLY:HA3	2.02	0.88

Continued on next page...

Continued from previous page...

Atom-1	Atom-2	Interatomic distance (Å)	Clash overlap (Å)
1:C:435:ARG:HH12	1:C:812:GLY:CA	1.77	0.88
1:D:268:ASP:CG	1:D:488:ARG:NH1	2.28	0.87
1:E:449:THR:CG2	1:F:858:LEU:HG	2.05	0.87
1:A:858:LEU:HD11	1:F:447:PRO:O	1.75	0.86
1:B:354:GLN:HE22	1:C:861:ILE:HD11	1.38	0.86
1:D:279:HIS:H	1:D:488:ARG:HH22	1.19	0.85
1:C:279:HIS:CD2	1:C:488:ARG:HH22	1.94	0.85
1:E:354:GLN:HE22	1:F:861:ILE:HD11	1.36	0.85
1:B:275:VAL:CG1	1:B:485:LYS:HD3	2.05	0.85
1:C:435:ARG:HG3	1:D:938:GLY:HA3	1.59	0.85
1:A:935:GLY:O	1:F:434:LYS:NZ	2.10	0.85
1:C:423:ASP:OD2	1:C:486:ASN:ND2	2.09	0.85
1:A:273:PRO:HG2	1:A:485:LYS:HG2	1.55	0.84
1:E:435:ARG:NH2	1:E:811:ASP:O	2.12	0.83
1:E:275:VAL:HG12	1:E:485:LYS:CD	2.09	0.83
1:B:105:ARG:HA	1:B:230:LEU:HD12	1.60	0.83
1:B:275:VAL:HG12	1:B:485:LYS:CD	2.08	0.83
1:F:279:HIS:CD2	1:F:488:ARG:NH2	2.46	0.83
1:A:269:ARG:NH1	1:A:485:LYS:O	2.10	0.82
1:E:105:ARG:HA	1:E:230:LEU:HD12	1.60	0.81
1:A:435:ARG:CZ	1:A:811:ASP:O	2.27	0.81
1:A:938:GLY:HA3	1:F:435:ARG:HG3	1.62	0.81
1:A:435:ARG:NH1	1:A:812:GLY:CA	2.44	0.80
1:A:269:ARG:NH1	1:A:486:ASN:CA	2.44	0.80
1:D:999:GLU:OE1	1:E:1304:ARG:NH1	2.15	0.80
1:A:268:ASP:OD2	1:A:488:ARG:NH1	2.15	0.80
1:A:279:HIS:N	1:A:488:ARG:NH2	2.24	0.80
1:B:268:ASP:OD2	1:B:487:SER:OG	2.01	0.79
1:C:434:LYS:NZ	1:D:935:GLY:O	2.13	0.79
1:D:279:HIS:N	1:D:488:ARG:HH22	1.78	0.79
1:D:273:PRO:HB2	1:D:485:LYS:NZ	1.98	0.79
1:E:449:THR:HG22	1:F:858:LEU:HG	1.62	0.79
1:A:279:HIS:N	1:A:488:ARG:HH22	1.77	0.79
1:A:999:GLU:OE1	1:B:1304:ARG:NH1	2.16	0.78
1:B:999:GLU:OE1	1:C:1304:ARG:NH1	2.17	0.78
1:C:999:GLU:OE1	1:D:1304:ARG:NH1	2.17	0.78
1:A:1304:ARG:NH1	1:F:999:GLU:OE1	2.17	0.78
1:E:999:GLU:OE1	1:F:1304:ARG:NH1	2.17	0.78
1:C:447:PRO:O	1:D:858:LEU:HD11	1.84	0.77
1:E:268:ASP:OD2	1:E:487:SER:OG	2.02	0.77
1:A:276:SER:CB	1:A:485:LYS:HB3	2.15	0.76

Continued on next page...

Continued from previous page...

Atom-1	Atom-2	Interatomic distance (Å)	Clash overlap (Å)
1:A:273:PRO:HG2	1:A:485:LYS:HA	1.68	0.76
1:A:273:PRO:HB2	1:A:485:LYS:NZ	2.01	0.76
1:F:435:ARG:HH12	1:F:812:GLY:HA3	0.97	0.75
1:F:435:ARG:HH12	1:F:812:GLY:N	1.85	0.75
1:A:276:SER:HB3	1:A:485:LYS:HB3	1.70	0.74
1:B:768:GLN:HE21	1:B:991:VAL:HG12	1.53	0.74
1:D:105:ARG:HA	1:D:230:LEU:HD12	1.70	0.74
1:C:279:HIS:CD2	1:C:488:ARG:NH2	2.56	0.74
1:C:354:GLN:CD	1:D:863:THR:HG21	2.08	0.74
1:A:302:ASN:HB2	1:A:402:ILE:H	1.53	0.73
1:A:768:GLN:HE21	1:A:991:VAL:HG12	1.53	0.73
1:E:768:GLN:HE21	1:E:991:VAL:HG12	1.53	0.73
1:A:672:THR:HG21	1:F:334:THR:HG22	1.69	0.73
1:C:768:GLN:HE21	1:C:991:VAL:HG12	1.53	0.73
1:D:768:GLN:HE21	1:D:991:VAL:HG12	1.53	0.73
1:D:273:PRO:HB2	1:D:485:LYS:HZ2	1.51	0.73
1:F:768:GLN:HE21	1:F:991:VAL:HG12	1.53	0.72
1:A:863:THR:HG21	1:F:354:GLN:CG	2.18	0.72
1:D:302:ASN:HB2	1:D:402:ILE:H	1.53	0.72
1:D:269:ARG:NH1	1:D:485:LYS:CA	2.43	0.72
1:A:276:SER:CA	1:A:485:LYS:HB3	2.18	0.72
1:C:354:GLN:HG2	1:D:863:THR:HG21	1.70	0.72
1:D:276:SER:CB	1:D:485:LYS:HB3	2.19	0.71
1:B:274:ARG:NH1	1:B:433:ALA:O	2.24	0.71
1:C:155:ASN:O	1:C:161:ASN:ND2	2.24	0.71
1:E:269:ARG:NH2	1:E:484:ASN:O	2.24	0.71
1:A:863:THR:HG21	1:F:354:GLN:HG2	1.72	0.71
1:D:276:SER:CB	1:D:485:LYS:O	2.34	0.70
1:D:279:HIS:N	1:D:488:ARG:NH2	2.28	0.70
1:E:275:VAL:CG1	1:E:485:LYS:CD	2.68	0.70
1:C:334:THR:HG22	1:D:672:THR:HG21	1.71	0.70
1:A:863:THR:OG1	1:F:354:GLN:HG2	1.91	0.70
1:D:276:SER:CA	1:D:485:LYS:HB3	2.22	0.70
1:A:105:ARG:HA	1:A:230:LEU:HD12	1.74	0.70
1:F:155:ASN:O	1:F:161:ASN:ND2	2.25	0.69
1:D:273:PRO:HG2	1:D:485:LYS:HA	1.75	0.69
1:B:236:THR:OG1	1:C:489:ALA:HB2	1.93	0.69
1:A:863:THR:HG23	1:F:354:GLN:NE2	2.07	0.69
1:D:265:LEU:O	1:D:448:GLN:NE2	2.26	0.69
1:B:259:VAL:HG11	1:B:285:LEU:HD22	1.75	0.68
1:C:273:PRO:HG2	1:C:276:SER:HB2	1.75	0.68

Continued on next page...

Continued from previous page...

Atom-1	Atom-2	Interatomic distance (Å)	Clash overlap (Å)
1:E:105:ARG:NH2	1:E:232:GLU:OE2	2.27	0.68
1:B:435:ARG:NH1	1:B:811:ASP:O	2.27	0.68
1:A:279:HIS:NE2	1:A:486:ASN:ND2	2.42	0.67
1:A:411:PRO:HG2	1:F:249:VAL:HG11	1.76	0.67
1:D:269:ARG:CG	1:D:487:SER:HB3	2.18	0.67
1:D:273:PRO:HG2	1:D:276:SER:HB3	1.75	0.67
1:D:279:HIS:NE2	1:D:486:ASN:ND2	2.42	0.67
1:A:273:PRO:HG2	1:A:276:SER:HB3	1.76	0.67
1:A:276:SER:HB2	1:A:485:LYS:C	2.14	0.67
1:C:354:GLN:CG	1:D:863:THR:HG21	2.24	0.67
1:A:273:PRO:CG	1:A:485:LYS:HA	2.24	0.67
1:E:259:VAL:HG11	1:E:285:LEU:HD22	1.76	0.67
1:E:743:ILE:HG13	1:E:789:PHE:HB3	1.77	0.67
1:D:743:ILE:HG13	1:D:789:PHE:HB3	1.77	0.67
1:B:574:THR:OG1	1:B:806:ASN:ND2	2.29	0.66
1:C:574:THR:OG1	1:C:806:ASN:ND2	2.29	0.66
1:C:354:GLN:NE2	1:D:863:THR:HG23	2.09	0.66
1:D:574:THR:OG1	1:D:806:ASN:ND2	2.29	0.66
1:E:574:THR:OG1	1:E:806:ASN:ND2	2.29	0.66
1:F:574:THR:OG1	1:F:806:ASN:ND2	2.29	0.66
1:F:743:ILE:HG13	1:F:789:PHE:HB3	1.77	0.66
1:C:743:ILE:HG13	1:C:789:PHE:HB3	1.77	0.66
1:D:1220:ALA:O	1:E:1466:THR:OG1	2.13	0.66
1:A:863:THR:CG2	1:F:354:GLN:NE2	2.59	0.66
1:F:240:VAL:HG22	1:F:253:THR:HG22	1.78	0.66
1:A:273:PRO:HB2	1:A:485:LYS:HZ2	1.61	0.66
1:A:276:SER:HB3	1:A:485:LYS:CB	2.25	0.66
1:A:574:THR:OG1	1:A:806:ASN:ND2	2.29	0.66
1:D:294:GLU:HB2	1:D:408:GLU:HB3	1.77	0.66
1:A:1220:ALA:O	1:B:1466:THR:OG1	2.13	0.66
1:A:743:ILE:HG13	1:A:789:PHE:HB3	1.77	0.65
1:C:354:GLN:NE2	1:D:863:THR:CG2	2.59	0.65
1:B:743:ILE:HG13	1:B:789:PHE:HB3	1.77	0.65
1:B:766:VAL:HG11	1:B:792:ILE:HD12	1.78	0.65
1:A:1097:LYS:HB3	1:A:1209:GLU:HB3	1.79	0.65
1:B:1097:LYS:HB3	1:B:1209:GLU:HB3	1.79	0.65
1:C:364:GLN:OE1	1:C:364:GLN:N	2.29	0.65
1:C:766:VAL:HG11	1:C:792:ILE:HD12	1.78	0.65
1:A:373:GLN:HE22	1:A:387:ALA:HB1	1.61	0.65
1:D:276:SER:HA	1:D:485:LYS:HB3	1.78	0.65
1:E:236:THR:OG1	1:F:489:ALA:HB2	1.96	0.65

Continued on next page...

Continued from previous page...

Atom-1	Atom-2	Interatomic distance (Å)	Clash overlap (Å)
1:C:1097:LYS:HB3	1:C:1209:GLU:HB3	1.79	0.65
1:D:454:PHE:HA	1:D:482:ASP:OD1	1.97	0.65
1:F:1097:LYS:HB3	1:F:1209:GLU:HB3	1.79	0.65
1:E:1394:ASP:HB3	1:E:1397:LEU:HB3	1.79	0.64
1:A:1394:ASP:HB3	1:A:1397:LEU:HB3	1.79	0.64
1:E:512:PHE:HB3	1:E:722:PHE:HB2	1.80	0.64
1:D:71:ASP:OD2	1:D:76:LYS:NZ	2.30	0.64
1:D:269:ARG:NH1	1:D:486:ASN:N	2.35	0.64
1:F:512:PHE:HB3	1:F:722:PHE:HB2	1.80	0.64
1:A:766:VAL:HG11	1:A:792:ILE:HD12	1.78	0.64
1:B:269:ARG:NH2	1:B:484:ASN:O	2.31	0.64
1:B:1394:ASP:HB3	1:B:1397:LEU:HB3	1.79	0.64
1:C:249:VAL:HG11	1:D:411:PRO:HG2	1.80	0.64
1:D:273:PRO:HG2	1:D:485:LYS:CG	2.26	0.64
1:D:1097:LYS:HB3	1:D:1209:GLU:HB3	1.79	0.64
1:E:1097:LYS:HB3	1:E:1209:GLU:HB3	1.79	0.64
1:F:1394:ASP:HB3	1:F:1397:LEU:HB3	1.79	0.64
1:F:766:VAL:HG11	1:F:792:ILE:HD12	1.78	0.64
1:D:1394:ASP:HB3	1:D:1397:LEU:HB3	1.80	0.64
1:A:276:SER:HA	1:A:485:LYS:HB3	1.80	0.64
1:D:512:PHE:HB3	1:D:722:PHE:HB2	1.80	0.64
1:A:55:SER:O	1:A:58:GLN:NE2	2.28	0.64
1:A:265:LEU:O	1:A:448:GLN:NE2	2.31	0.64
1:A:273:PRO:HG2	1:A:485:LYS:CG	2.28	0.64
1:D:268:ASP:CG	1:D:488:ARG:HH12	1.97	0.64
1:A:331:THR:HG22	1:A:396:LYS:HE2	1.80	0.64
1:D:766:VAL:HG11	1:D:792:ILE:HD12	1.78	0.64
1:A:512:PHE:HB3	1:A:722:PHE:HB2	1.80	0.63
1:C:1394:ASP:HB3	1:C:1397:LEU:HB3	1.79	0.63
1:D:273:PRO:CG	1:D:485:LYS:HA	2.29	0.63
1:E:766:VAL:HG11	1:E:792:ILE:HD12	1.78	0.63
1:E:1220:ALA:O	1:F:1466:THR:OG1	2.16	0.63
1:A:455:SER:N	1:A:482:ASP:OD1	2.30	0.63
1:C:435:ARG:CG	1:D:938:GLY:HA3	2.29	0.63
1:C:512:PHE:HB3	1:C:722:PHE:HB2	1.80	0.63
1:D:268:ASP:OD2	1:D:488:ARG:CZ	2.46	0.63
1:C:1220:ALA:O	1:D:1466:THR:OG1	2.17	0.63
1:D:276:SER:HB3	1:D:485:LYS:HB3	1.80	0.63
1:E:1050:HIS:HD2	1:E:1051:ALA:N	1.97	0.63
1:D:1050:HIS:HD2	1:D:1051:ALA:N	1.97	0.62
1:B:1295:ALA:HB1	1:B:1320:PRO:HB3	1.81	0.62

Continued on next page...

Continued from previous page...

Atom-1	Atom-2	Interatomic distance (Å)	Clash overlap (Å)
1:C:1050:HIS:HD2	1:C:1051:ALA:N	1.97	0.62
1:F:1050:HIS:HD2	1:F:1051:ALA:N	1.97	0.62
1:A:1050:HIS:HD2	1:A:1051:ALA:N	1.97	0.62
1:B:269:ARG:NH1	1:B:276:SER:OG	2.32	0.62
1:B:273:PRO:HG2	1:B:276:SER:HB2	1.82	0.62
1:B:512:PHE:HB3	1:B:722:PHE:HB2	1.80	0.62
1:B:1050:HIS:HD2	1:B:1051:ALA:N	1.97	0.62
1:F:366:ASN:ND2	1:F:424:LYS:O	2.32	0.62
1:A:268:ASP:CG	1:A:488:ARG:NH1	2.53	0.62
1:C:354:GLN:HG2	1:D:863:THR:OG1	1.99	0.62
1:C:1295:ALA:HB1	1:C:1320:PRO:HB3	1.81	0.62
1:B:1436:GLU:N	1:B:1436:GLU:OE2	2.33	0.62
1:A:1295:ALA:HB1	1:A:1320:PRO:HB3	1.81	0.62
1:B:449:THR:HG21	1:C:859:ILE:H	1.64	0.62
1:F:1436:GLU:OE2	1:F:1436:GLU:N	2.33	0.62
1:A:1436:GLU:OE2	1:A:1436:GLU:N	2.33	0.62
1:E:1436:GLU:OE2	1:E:1436:GLU:N	2.33	0.62
1:C:1066:THR:OG1	1:C:1068:ASP:OD1	2.17	0.61
1:A:71:ASP:OD2	1:A:76:LYS:NZ	2.32	0.61
1:A:863:THR:CB	1:F:354:GLN:HG2	2.31	0.61
1:A:257:ASP:OD1	1:A:258:THR:N	2.33	0.61
1:A:863:THR:CG2	1:F:354:GLN:HG2	2.30	0.61
1:C:1436:GLU:OE2	1:C:1436:GLU:N	2.33	0.61
1:C:87:VAL:O	1:C:231:TYR:OH	2.19	0.61
1:A:886:PHE:HA	1:B:1301:THR:HG21	1.83	0.61
1:D:1295:ALA:HB1	1:D:1320:PRO:HB3	1.81	0.61
1:E:886:PHE:HA	1:F:1301:THR:HG21	1.82	0.61
1:E:1476:ASP:OD1	1:E:1477:GLY:N	2.31	0.61
1:B:1066:THR:OG1	1:B:1068:ASP:OD1	2.17	0.61
1:C:1476:ASP:OD1	1:C:1477:GLY:N	2.31	0.61
1:D:1122:ASP:OD1	1:D:1126:ASN:ND2	2.34	0.61
1:F:1295:ALA:HB1	1:F:1320:PRO:HB3	1.81	0.61
1:C:126:VAL:HG22	1:C:164:GLN:HA	1.83	0.60
1:D:1436:GLU:N	1:D:1436:GLU:OE2	2.33	0.60
1:D:1481:SER:HB3	1:D:1491:VAL:HG12	1.83	0.60
1:E:449:THR:HG21	1:F:859:ILE:H	1.64	0.60
1:E:115:ALA:HA	1:E:330:LEU:HD13	1.83	0.60
1:E:1066:THR:OG1	1:E:1068:ASP:OD1	2.17	0.60
1:D:87:VAL:O	1:D:231:TYR:OH	2.19	0.60
1:E:1122:ASP:OD1	1:E:1126:ASN:ND2	2.34	0.60
1:B:886:PHE:HA	1:C:1301:THR:HG21	1.83	0.60

Continued on next page...

Continued from previous page...

Atom-1	Atom-2	Interatomic distance (Å)	Clash overlap (Å)
1:C:1122:ASP:OD1	1:C:1126:ASN:ND2	2.34	0.60
1:F:126:VAL:HG22	1:F:164:GLN:HA	1.82	0.60
1:E:1295:ALA:HB1	1:E:1320:PRO:HB3	1.81	0.60
1:A:90:MET:HB3	1:A:98:TRP:HB3	1.82	0.60
1:A:284:ASP:OD1	1:A:286:TRP:N	2.33	0.60
1:A:1466:THR:OG1	1:F:1220:ALA:O	2.18	0.60
1:B:354:GLN:CD	1:C:861:ILE:HD11	2.19	0.60
1:B:1481:SER:HB3	1:B:1491:VAL:HG12	1.83	0.60
1:E:1481:SER:HB3	1:E:1491:VAL:HG12	1.83	0.60
1:C:354:GLN:HG2	1:D:863:THR:CG2	2.32	0.60
1:C:240:VAL:HG22	1:C:253:THR:HG22	1.82	0.60
1:A:863:THR:CG2	1:F:354:GLN:CD	2.68	0.60
1:A:1122:ASP:OD1	1:A:1126:ASN:ND2	2.34	0.60
1:A:858:LEU:HD21	1:F:447:PRO:HB2	1.84	0.60
1:C:1481:SER:HB3	1:C:1491:VAL:HG12	1.82	0.60
1:F:144:THR:HG23	1:F:146:GLY:H	1.67	0.59
1:A:273:PRO:CB	1:A:485:LYS:HG2	2.31	0.59
1:C:303:THR:HG23	1:C:304:LYS:HG3	1.84	0.59
1:D:886:PHE:HA	1:E:1301:THR:HG21	1.83	0.59
1:F:435:ARG:HH12	1:F:811:ASP:C	1.97	0.59
1:F:1122:ASP:OD1	1:F:1126:ASN:ND2	2.34	0.59
1:D:273:PRO:CB	1:D:485:LYS:HG2	2.32	0.59
1:D:279:HIS:HD1	1:D:425:SER:HB2	1.67	0.59
1:B:1220:ALA:O	1:C:1466:THR:OG1	2.16	0.59
1:C:886:PHE:HA	1:D:1301:THR:HG21	1.84	0.59
1:F:1481:SER:HB3	1:F:1491:VAL:HG12	1.82	0.59
1:B:1122:ASP:OD1	1:B:1126:ASN:ND2	2.34	0.59
1:A:1481:SER:HB3	1:A:1491:VAL:HG12	1.83	0.59
1:E:273:PRO:HG2	1:E:276:SER:HB2	1.85	0.59
1:F:1476:ASP:OD1	1:F:1477:GLY:N	2.31	0.59
1:E:364:GLN:HE21	1:E:428:LYS:HB2	1.68	0.59
1:C:625:PHE:HE1	1:C:627:TYR:HB3	1.69	0.58
1:E:74:GLU:O	1:E:211:GLN:NE2	2.36	0.58
1:B:1476:ASP:OD1	1:B:1477:GLY:N	2.31	0.58
1:D:625:PHE:HE1	1:D:627:TYR:HB3	1.69	0.58
1:F:569:THR:HB	1:F:582:ALA:HB3	1.86	0.58
1:A:273:PRO:HG2	1:A:485:LYS:CA	2.34	0.58
1:D:57:PRO:HG3	1:D:339:LEU:HD22	1.85	0.58
1:A:569:THR:HB	1:A:582:ALA:HB3	1.85	0.58
1:A:937:THR:O	1:F:435:ARG:NE	2.37	0.58
1:A:1301:THR:HG21	1:F:886:PHE:HA	1.84	0.58

Continued on next page...

Continued from previous page...

Atom-1	Atom-2	Interatomic distance (Å)	Clash overlap (Å)
1:B:625:PHE:HE1	1:B:627:TYR:HB3	1.69	0.58
1:F:257:ASP:OD1	1:F:258:THR:N	2.36	0.58
1:A:1066:THR:OG1	1:A:1068:ASP:OD1	2.17	0.58
1:D:257:ASP:OD1	1:D:258:THR:N	2.37	0.58
1:F:89:ARG:NH1	1:F:140:SER:O	2.36	0.58
1:E:569:THR:HB	1:E:582:ALA:HB3	1.85	0.58
1:F:109:GLN:NE2	1:F:171:GLY:O	2.31	0.58
1:A:1308:ASP:OD1	1:A:1308:ASP:N	2.37	0.58
1:A:1476:ASP:OD1	1:A:1477:GLY:N	2.31	0.57
1:D:569:THR:HB	1:D:582:ALA:HB3	1.85	0.57
1:E:625:PHE:HE1	1:E:627:TYR:HB3	1.69	0.57
1:F:87:VAL:O	1:F:231:TYR:OH	2.21	0.57
1:F:278:VAL:HB	1:F:427:LEU:HB2	1.86	0.57
1:E:1206:LEU:N	1:E:1227:ALA:O	2.32	0.57
1:D:279:HIS:ND1	1:D:425:SER:HB2	2.19	0.57
1:A:625:PHE:HE1	1:A:627:TYR:HB3	1.68	0.57
1:D:260:ASP:HA	1:D:344:ASN:HD22	1.70	0.57
1:A:80:ASP:OD2	1:A:244:ASN:ND2	2.35	0.57
1:E:624:PHE:HB2	1:E:723:PHE:HB2	1.87	0.57
1:B:214:LEU:HD22	1:B:224:ASN:HB3	1.85	0.57
1:C:1308:ASP:N	1:C:1308:ASP:OD1	2.37	0.57
1:B:569:THR:HB	1:B:582:ALA:HB3	1.85	0.57
1:D:624:PHE:HB2	1:D:723:PHE:HB2	1.87	0.57
1:D:995:ASP:OD2	1:D:997:SER:N	2.38	0.57
1:A:279:HIS:HD1	1:A:425:SER:HB2	1.69	0.57
1:C:995:ASP:OD2	1:C:997:SER:N	2.38	0.57
1:D:304:LYS:NZ	1:D:350:ASP:OD2	2.37	0.57
1:F:1308:ASP:OD1	1:F:1308:ASP:N	2.37	0.57
1:B:236:THR:HG21	1:C:489:ALA:HB1	1.86	0.56
1:C:569:THR:HB	1:C:582:ALA:HB3	1.85	0.56
1:A:276:SER:HB3	1:A:485:LYS:CA	2.35	0.56
1:A:524:PHE:HB2	1:A:566:ILE:HB	1.88	0.56
1:E:995:ASP:OD2	1:E:997:SER:N	2.38	0.56
1:A:442:ASP:HA	1:A:447:PRO:HA	1.86	0.56
1:C:524:PHE:HB2	1:C:566:ILE:HB	1.88	0.56
1:D:442:ASP:HA	1:D:447:PRO:HA	1.86	0.56
1:F:624:PHE:HB2	1:F:723:PHE:HB2	1.87	0.56
1:F:995:ASP:OD2	1:F:997:SER:N	2.38	0.56
1:F:273:PRO:HG2	1:F:276:SER:HB2	1.88	0.56
1:B:524:PHE:HB2	1:B:566:ILE:HB	1.88	0.56
1:B:624:PHE:HB2	1:B:723:PHE:HB2	1.87	0.56

Continued on next page...

Continued from previous page...

Atom-1	Atom-2	Interatomic distance (Å)	Clash overlap (Å)
1:C:144:THR:HG23	1:C:146:GLY:H	1.68	0.56
1:D:524:PHE:HB2	1:D:566:ILE:HB	1.88	0.56
1:F:524:PHE:HB2	1:F:566:ILE:HB	1.88	0.56
1:B:1206:LEU:N	1:B:1227:ALA:O	2.32	0.56
1:F:625:PHE:HE1	1:F:627:TYR:HB3	1.68	0.56
1:B:995:ASP:OD2	1:B:997:SER:N	2.38	0.56
1:C:105:ARG:NH2	1:C:232:GLU:OE2	2.38	0.56
1:D:1066:THR:OG1	1:D:1068:ASP:OD1	2.17	0.56
1:A:995:ASP:OD2	1:A:997:SER:N	2.38	0.56
1:A:1206:LEU:N	1:A:1227:ALA:O	2.32	0.56
1:D:1206:LEU:N	1:D:1227:ALA:O	2.32	0.56
1:E:195:ARG:NH2	1:E:295:ASP:OD1	2.36	0.56
1:F:837:TYR:O	1:F:1010:ARG:N	2.39	0.56
1:F:1206:LEU:N	1:F:1227:ALA:O	2.32	0.56
1:C:624:PHE:HB2	1:C:723:PHE:HB2	1.87	0.55
1:E:524:PHE:HB2	1:E:566:ILE:HB	1.88	0.55
1:F:45:ALA:HB2	1:F:60:ILE:HD12	1.87	0.55
1:B:837:TYR:O	1:B:1010:ARG:N	2.40	0.55
1:C:89:ARG:NH1	1:C:140:SER:O	2.39	0.55
1:F:1066:THR:OG1	1:F:1068:ASP:OD1	2.17	0.55
1:B:83:VAL:HG12	1:B:241:VAL:HG22	1.89	0.55
1:E:302:ASN:HB2	1:E:402:ILE:H	1.71	0.55
1:E:1308:ASP:N	1:E:1308:ASP:OD1	2.37	0.55
1:B:275:VAL:CG1	1:B:485:LYS:CD	2.76	0.55
1:B:313:ASP:OD1	1:B:314:THR:N	2.39	0.55
1:B:1308:ASP:OD1	1:B:1308:ASP:N	2.37	0.55
1:D:1308:ASP:OD1	1:D:1308:ASP:N	2.37	0.55
1:A:624:PHE:HB2	1:A:723:PHE:HB2	1.87	0.55
1:B:236:THR:OG1	1:C:489:ALA:CB	2.55	0.55
1:E:313:ASP:OD1	1:E:314:THR:N	2.40	0.55
1:A:279:HIS:ND1	1:A:425:SER:HB2	2.21	0.55
1:C:435:ARG:NE	1:D:937:THR:O	2.40	0.55
1:D:837:TYR:O	1:D:1010:ARG:N	2.39	0.55
1:A:150:PRO:HB2	1:A:189:GLY:HA2	1.89	0.54
1:A:837:TYR:O	1:A:1010:ARG:N	2.40	0.54
1:B:195:ARG:NH2	1:B:295:ASP:OD1	2.35	0.54
1:E:277:GLN:HE22	1:E:364:GLN:HE22	1.56	0.54
1:B:117:THR:HG22	1:B:330:LEU:HD21	1.89	0.54
1:B:449:THR:HG23	1:C:858:LEU:HG	1.86	0.54
1:D:360:VAL:HB	1:D:439:ALA:HB2	1.90	0.54
1:E:105:ARG:NH1	1:E:106:ASP:OD1	2.40	0.54

Continued on next page...

Continued from previous page...

Atom-1	Atom-2	Interatomic distance (Å)	Clash overlap (Å)
1:E:1096:LEU:HB3	1:E:1112:ALA:HB3	1.89	0.54
1:A:938:GLY:HA3	1:F:435:ARG:CG	2.34	0.54
1:C:1096:LEU:HB3	1:C:1112:ALA:HB3	1.89	0.54
1:F:284:ASP:OD2	1:F:443:TYR:OH	2.16	0.54
1:C:837:TYR:O	1:C:1010:ARG:N	2.40	0.54
1:D:1476:ASP:OD1	1:D:1477:GLY:N	2.31	0.54
1:C:966:ASP:OD1	1:C:966:ASP:N	2.41	0.54
1:E:965:SER:OG	1:E:966:ASP:OD1	2.26	0.54
1:C:354:GLN:HG2	1:D:863:THR:CB	2.38	0.54
1:D:150:PRO:HB2	1:D:189:GLY:HA2	1.89	0.54
1:D:419:TYR:HA	1:D:425:SER:HA	1.90	0.54
1:A:1096:LEU:HB3	1:A:1112:ALA:HB3	1.89	0.53
1:B:1096:LEU:HB3	1:B:1112:ALA:HB3	1.89	0.53
1:A:966:ASP:OD1	1:A:966:ASP:N	2.41	0.53
1:C:45:ALA:HB2	1:C:60:ILE:HD12	1.89	0.53
1:F:966:ASP:OD1	1:F:966:ASP:N	2.41	0.53
1:E:214:LEU:HD22	1:E:224:ASN:HB3	1.89	0.53
1:E:1050:HIS:CD2	1:E:1051:ALA:N	2.77	0.53
1:F:1044:ARG:HA	1:F:1169:HIS:HB3	1.91	0.53
1:A:1044:ARG:HA	1:A:1169:HIS:HB3	1.91	0.53
1:B:320:ASP:OD1	1:B:321:GLU:N	2.42	0.53
1:B:500:VAL:O	1:B:578:ARG:NH2	2.40	0.53
1:C:144:THR:HA	1:C:231:TYR:HE1	1.73	0.53
1:C:1206:LEU:N	1:C:1227:ALA:O	2.32	0.53
1:D:642:LEU:HD11	1:D:703:ALA:HB2	1.91	0.53
1:F:1096:LEU:HB3	1:F:1112:ALA:HB3	1.89	0.53
1:C:447:PRO:HB2	1:D:858:LEU:HD21	1.90	0.53
1:C:642:LEU:HD11	1:C:703:ALA:HB2	1.91	0.53
1:D:966:ASP:OD1	1:D:966:ASP:N	2.41	0.53
1:E:83:VAL:HG12	1:E:241:VAL:HG22	1.90	0.53
1:E:837:TYR:O	1:E:1010:ARG:N	2.39	0.53
1:E:1296:PHE:HB3	1:E:1317:ILE:HG23	1.91	0.53
1:A:1098:ILE:HD11	1:A:1206:LEU:HD11	1.91	0.53
1:B:642:LEU:HD11	1:B:703:ALA:HB2	1.91	0.53
1:C:1098:ILE:HD11	1:C:1206:LEU:HD11	1.91	0.53
1:D:269:ARG:HH12	1:D:486:ASN:N	2.06	0.53
1:D:769:ILE:HD11	1:D:892:LEU:HB2	1.91	0.53
1:D:1050:HIS:CD2	1:D:1051:ALA:N	2.77	0.53
1:D:1096:LEU:HB3	1:D:1112:ALA:HB3	1.89	0.53
1:A:769:ILE:HD11	1:A:892:LEU:HB2	1.91	0.53
1:C:109:GLN:NE2	1:C:171:GLY:O	2.36	0.53

Continued on next page...

Continued from previous page...

Atom-1	Atom-2	Interatomic distance (Å)	Clash overlap (Å)
1:C:1478:LEU:HB3	1:C:1494:ALA:HB3	1.91	0.53
1:A:642:LEU:HD11	1:A:703:ALA:HB2	1.91	0.53
1:B:596:ALA:HB3	1:B:704:MET:HB2	1.91	0.53
1:D:815:THR:OG1	1:E:1083:ASN:OD1	2.27	0.53
1:E:1044:ARG:HA	1:E:1169:HIS:HB3	1.91	0.53
1:A:269:ARG:NH1	1:A:485:LYS:CA	2.68	0.53
1:B:236:THR:CB	1:C:489:ALA:HA	2.39	0.53
1:E:236:THR:HG21	1:F:489:ALA:HB1	1.91	0.53
1:E:435:ARG:CZ	1:E:811:ASP:O	2.57	0.53
1:E:500:VAL:O	1:E:578:ARG:NH2	2.40	0.53
1:F:666:LEU:HD21	1:F:669:SER:HB2	1.91	0.53
1:F:1050:HIS:CD2	1:F:1051:ALA:N	2.77	0.53
1:A:419:TYR:HA	1:A:425:SER:HA	1.91	0.52
1:A:645:THR:HA	1:A:698:VAL:HA	1.91	0.52
1:A:768:GLN:NE2	1:A:991:VAL:HG12	2.23	0.52
1:A:1296:PHE:HB3	1:A:1317:ILE:HG23	1.91	0.52
1:B:1044:ARG:HA	1:B:1169:HIS:HB3	1.91	0.52
1:C:645:THR:HA	1:C:698:VAL:HA	1.92	0.52
1:D:109:GLN:NE2	1:D:171:GLY:O	2.38	0.52
1:D:273:PRO:HG2	1:D:485:LYS:CA	2.39	0.52
1:E:596:ALA:HB3	1:E:704:MET:HB2	1.91	0.52
1:F:596:ALA:HB3	1:F:704:MET:HB2	1.91	0.52
1:B:1478:LEU:HB3	1:B:1494:ALA:HB3	1.91	0.52
1:C:389:GLY:HA2	1:C:403:PRO:HG3	1.91	0.52
1:C:1050:HIS:CD2	1:C:1051:ALA:N	2.77	0.52
1:E:642:LEU:HD11	1:E:703:ALA:HB2	1.91	0.52
1:E:966:ASP:OD1	1:E:966:ASP:N	2.41	0.52
1:B:302:ASN:HB2	1:B:402:ILE:H	1.73	0.52
1:B:769:ILE:HD11	1:B:892:LEU:HB2	1.91	0.52
1:B:1296:PHE:HB3	1:B:1317:ILE:HG23	1.91	0.52
1:C:1296:PHE:HB3	1:C:1317:ILE:HG23	1.91	0.52
1:D:965:SER:OG	1:D:966:ASP:OD1	2.26	0.52
1:D:1478:LEU:HB3	1:D:1494:ALA:HB3	1.91	0.52
1:E:311:ASN:ND2	1:E:333:ARG:HD3	2.24	0.52
1:F:1296:PHE:HB3	1:F:1317:ILE:HG23	1.91	0.52
1:A:294:GLU:OE2	1:F:242:GLN:NE2	2.42	0.52
1:B:645:THR:HA	1:B:698:VAL:HA	1.92	0.52
1:E:769:ILE:HD11	1:E:892:LEU:HB2	1.91	0.52
1:A:1440:THR:N	1:A:1470:LEU:O	2.40	0.52
1:C:769:ILE:HD11	1:C:892:LEU:HB2	1.91	0.52
1:D:207:VAL:HG13	1:D:211:GLN:HG2	1.90	0.52

Continued on next page...

Continued from previous page...

Atom-1	Atom-2	Interatomic distance (Å)	Clash overlap (Å)
1:F:642:LEU:HD11	1:F:703:ALA:HB2	1.91	0.52
1:A:1050:HIS:CD2	1:A:1051:ALA:N	2.77	0.52
1:B:966:ASP:N	1:B:966:ASP:OD1	2.41	0.52
1:F:1478:LEU:HB3	1:F:1494:ALA:HB3	1.91	0.52
1:A:965:SER:OG	1:A:966:ASP:OD1	2.26	0.52
1:B:768:GLN:NE2	1:B:991:VAL:HG12	2.23	0.52
1:B:1050:HIS:CD2	1:B:1051:ALA:N	2.77	0.52
1:C:82:THR:HG22	1:C:87:VAL:HA	1.91	0.52
1:E:961:TRP:CD1	1:E:981:THR:HG22	2.45	0.52
1:E:1478:LEU:HB3	1:E:1494:ALA:HB3	1.91	0.52
1:F:1098:ILE:HD11	1:F:1206:LEU:HD11	1.91	0.52
1:A:596:ALA:HB3	1:A:704:MET:HB2	1.91	0.52
1:B:1098:ILE:HD11	1:B:1206:LEU:HD11	1.91	0.52
1:C:596:ALA:HB3	1:C:704:MET:HB2	1.91	0.52
1:C:961:TRP:CD1	1:C:981:THR:HG22	2.45	0.52
1:C:1044:ARG:HA	1:C:1169:HIS:HB3	1.91	0.52
1:D:645:THR:HA	1:D:698:VAL:HA	1.92	0.52
1:D:1044:ARG:HA	1:D:1169:HIS:HB3	1.91	0.52
1:F:768:GLN:NE2	1:F:991:VAL:HG12	2.23	0.52
1:A:72:THR:OG1	1:F:74:GLU:OE1	2.26	0.52
1:A:267:LEU:HD21	1:A:450:ILE:HG12	1.91	0.52
1:A:273:PRO:HB2	1:A:485:LYS:HZ3	1.73	0.52
1:A:454:PHE:HA	1:A:482:ASP:OD1	2.10	0.52
1:A:1467:ASP:OD1	1:A:1467:ASP:N	2.43	0.52
1:B:815:THR:OG1	1:C:1083:ASN:OD1	2.28	0.52
1:B:1050:HIS:HD2	1:B:1051:ALA:H	1.58	0.52
1:B:1235:VAL:HG13	1:B:1254:ILE:HG23	1.92	0.52
1:D:596:ALA:HB3	1:D:704:MET:HB2	1.91	0.52
1:D:1050:HIS:HD2	1:D:1051:ALA:H	1.58	0.52
1:D:1296:PHE:HB3	1:D:1317:ILE:HG23	1.91	0.52
1:E:1174:THR:OG1	1:E:1187:ARG:NH1	2.43	0.52
1:F:769:ILE:HD11	1:F:892:LEU:HB2	1.91	0.52
1:C:40:ASN:OD1	1:C:245:LYS:NZ	2.40	0.52
1:C:815:THR:OG1	1:D:1083:ASN:OD1	2.28	0.52
1:D:666:LEU:HD21	1:D:669:SER:HB2	1.91	0.52
1:F:645:THR:HA	1:F:698:VAL:HA	1.91	0.52
1:F:961:TRP:CD1	1:F:981:THR:HG22	2.45	0.52
1:A:273:PRO:HB2	1:A:485:LYS:HG2	1.91	0.51
1:A:666:LEU:HD21	1:A:669:SER:HB2	1.91	0.51
1:B:1174:THR:OG1	1:B:1187:ARG:NH1	2.43	0.51
1:F:466:ASP:OD2	1:F:466:ASP:N	2.43	0.51

Continued on next page...

Continued from previous page...

Atom-1	Atom-2	Interatomic distance (Å)	Clash overlap (Å)
1:A:961:TRP:CD1	1:A:981:THR:HG22	2.45	0.51
1:B:64:VAL:HB	1:B:98:TRP:HB2	1.92	0.51
1:B:517:GLY:HA3	1:B:603:ALA:HB2	1.93	0.51
1:D:961:TRP:CD1	1:D:981:THR:HG22	2.45	0.51
1:D:1098:ILE:HD11	1:D:1206:LEU:HD11	1.91	0.51
1:E:349:LEU:HD13	1:E:441:LEU:HD13	1.91	0.51
1:E:645:THR:HA	1:E:698:VAL:HA	1.91	0.51
1:E:666:LEU:HD21	1:E:669:SER:HB2	1.91	0.51
1:A:1174:THR:OG1	1:A:1187:ARG:NH1	2.43	0.51
1:C:1174:THR:OG1	1:C:1187:ARG:NH1	2.43	0.51
1:F:517:GLY:HA3	1:F:603:ALA:HB2	1.93	0.51
1:F:1467:ASP:OD1	1:F:1467:ASP:N	2.43	0.51
1:A:517:GLY:HA3	1:A:603:ALA:HB2	1.93	0.51
1:B:1467:ASP:OD1	1:B:1467:ASP:N	2.43	0.51
1:D:276:SER:HB2	1:D:485:LYS:C	2.25	0.51
1:D:276:SER:HB3	1:D:485:LYS:CB	2.39	0.51
1:F:1235:VAL:HG13	1:F:1254:ILE:HG23	1.92	0.51
1:B:961:TRP:CD1	1:B:981:THR:HG22	2.45	0.51
1:C:768:GLN:NE2	1:C:991:VAL:HG12	2.23	0.51
1:D:500:VAL:O	1:D:578:ARG:NH2	2.40	0.51
1:E:815:THR:OG1	1:F:1083:ASN:OD1	2.27	0.51
1:A:1478:LEU:HB3	1:A:1494:ALA:HB3	1.91	0.51
1:E:435:ARG:NH1	1:F:938:GLY:O	2.43	0.51
1:F:1174:THR:OG1	1:F:1187:ARG:NH1	2.43	0.51
1:C:284:ASP:HB3	1:C:287:LEU:HD12	1.93	0.51
1:C:666:LEU:HD21	1:C:669:SER:HB2	1.91	0.51
1:E:1071:ILE:HG12	1:E:1155:ILE:HD11	1.93	0.51
1:E:1098:ILE:HD11	1:E:1206:LEU:HD11	1.91	0.51
1:F:284:ASP:HB3	1:F:287:LEU:HD12	1.92	0.51
1:B:1071:ILE:HG12	1:B:1155:ILE:HD11	1.93	0.51
1:D:1219:ASP:OD2	1:E:1422:LYS:NZ	2.34	0.51
1:E:315:PHE:CD2	1:E:329:ALA:HB1	2.46	0.51
1:B:965:SER:OG	1:B:966:ASP:OD1	2.26	0.51
1:C:435:ARG:HD3	1:D:937:THR:O	2.11	0.51
1:D:903:SER:HG	1:D:974:TYR:HH	1.56	0.51
1:E:768:GLN:NE2	1:E:991:VAL:HG12	2.23	0.51
1:F:40:ASN:OD1	1:F:245:LYS:NZ	2.40	0.51
1:F:1050:HIS:HD2	1:F:1051:ALA:H	1.58	0.51
1:A:260:ASP:HA	1:A:344:ASN:HD22	1.77	0.50
1:A:269:ARG:NH1	1:A:486:ASN:HA	2.26	0.50
1:B:666:LEU:HD21	1:B:669:SER:HB2	1.91	0.50

Continued on next page...

Continued from previous page...

Atom-1	Atom-2	Interatomic distance (Å)	Clash overlap (Å)
1:C:517:GLY:HA3	1:C:603:ALA:HB2	1.93	0.50
1:C:965:SER:OG	1:C:966:ASP:OD1	2.26	0.50
1:C:1467:ASP:N	1:C:1467:ASP:OD1	2.43	0.50
1:D:768:GLN:NE2	1:D:991:VAL:HG12	2.23	0.50
1:F:1071:ILE:HG12	1:F:1155:ILE:HD11	1.93	0.50
1:A:1235:VAL:HG13	1:A:1254:ILE:HG23	1.92	0.50
1:C:121:GLY:HA3	1:C:330:LEU:HD12	1.92	0.50
1:E:236:THR:CB	1:F:489:ALA:HA	2.42	0.50
1:E:517:GLY:HA3	1:E:603:ALA:HB2	1.93	0.50
1:E:1235:VAL:HG13	1:E:1254:ILE:HG23	1.92	0.50
1:E:1467:ASP:N	1:E:1467:ASP:OD1	2.43	0.50
1:B:105:ARG:NH1	1:B:232:GLU:OE2	2.42	0.50
1:C:57:PRO:HG3	1:C:339:LEU:HD22	1.93	0.50
1:C:115:ALA:HA	1:C:330:LEU:HD13	1.93	0.50
1:C:1235:VAL:HG13	1:C:1254:ILE:HG23	1.92	0.50
1:D:1235:VAL:HG13	1:D:1254:ILE:HG23	1.92	0.50
1:D:1467:ASP:OD1	1:D:1467:ASP:N	2.43	0.50
1:A:360:VAL:HB	1:A:439:ALA:HB2	1.94	0.50
1:C:354:GLN:NE2	1:D:863:THR:HG21	2.26	0.50
1:D:1174:THR:OG1	1:D:1187:ARG:NH1	2.43	0.50
1:E:197:ALA:HB1	1:E:225:TRP:NE1	2.27	0.50
1:E:236:THR:OG1	1:F:489:ALA:CB	2.58	0.50
1:F:82:THR:HG22	1:F:87:VAL:HA	1.94	0.50
1:A:276:SER:CB	1:A:485:LYS:CA	2.90	0.50
1:A:277:GLN:OE1	1:A:364:GLN:NE2	2.43	0.50
1:A:1050:HIS:HD2	1:A:1051:ALA:H	1.58	0.50
1:C:918:ASP:HB3	1:C:923:GLU:HG3	1.94	0.50
1:C:1050:HIS:HD2	1:C:1051:ALA:H	1.58	0.50
1:C:1071:ILE:HG12	1:C:1155:ILE:HD11	1.93	0.50
1:D:517:GLY:HA3	1:D:603:ALA:HB2	1.93	0.50
1:F:121:GLY:HA3	1:F:330:LEU:HD12	1.94	0.50
1:A:500:VAL:O	1:A:578:ARG:NH2	2.40	0.50
1:D:277:GLN:OE1	1:D:364:GLN:NE2	2.45	0.50
1:B:349:LEU:HD13	1:B:441:LEU:HD13	1.94	0.50
1:E:1050:HIS:HD2	1:E:1051:ALA:H	1.58	0.50
1:F:57:PRO:HG3	1:F:339:LEU:HD22	1.94	0.50
1:D:1071:ILE:HG12	1:D:1155:ILE:HD11	1.93	0.50
1:D:1440:THR:N	1:D:1470:LEU:O	2.40	0.50
1:E:1440:THR:N	1:E:1470:LEU:O	2.40	0.50
1:A:937:THR:O	1:F:435:ARG:HD3	2.11	0.49
1:C:1298:PRO:HB2	1:C:1301:THR:HA	1.94	0.49

Continued on next page...

Continued from previous page...

Atom-1	Atom-2	Interatomic distance (Å)	Clash overlap (Å)
1:D:513:THR:OG1	1:D:514:ILE:N	2.45	0.49
1:F:918:ASP:HB3	1:F:923:GLU:HG3	1.94	0.49
1:A:642:LEU:HD22	1:A:651:TRP:CZ2	2.47	0.49
1:A:1071:ILE:HG12	1:A:1155:ILE:HD11	1.93	0.49
1:B:642:LEU:HD22	1:B:651:TRP:CZ2	2.47	0.49
1:C:1440:THR:N	1:C:1470:LEU:O	2.40	0.49
1:D:642:LEU:HD22	1:D:651:TRP:CZ2	2.47	0.49
1:D:1339:THR:OG1	1:D:1341:TRP:NE1	2.46	0.49
1:E:513:THR:OG1	1:E:514:ILE:N	2.45	0.49
1:E:918:ASP:HB3	1:E:923:GLU:HG3	1.94	0.49
1:F:513:THR:OG1	1:F:514:ILE:N	2.45	0.49
1:A:373:GLN:NE2	1:A:375:ASN:O	2.42	0.49
1:A:1298:PRO:HB2	1:A:1301:THR:HA	1.94	0.49
1:A:1339:THR:OG1	1:A:1341:TRP:NE1	2.46	0.49
1:D:466:ASP:OD2	1:D:466:ASP:N	2.44	0.49
1:D:80:ASP:HB3	1:D:244:ASN:HB2	1.94	0.49
1:E:466:ASP:OD2	1:E:466:ASP:N	2.44	0.49
1:B:1298:PRO:HB2	1:B:1301:THR:HA	1.94	0.49
1:C:513:THR:OG1	1:C:514:ILE:N	2.45	0.49
1:D:1298:PRO:HB2	1:D:1301:THR:HA	1.94	0.49
1:F:157:THR:H	1:F:161:ASN:HD22	1.60	0.49
1:F:642:LEU:HD22	1:F:651:TRP:CZ2	2.47	0.49
1:F:1339:THR:OG1	1:F:1341:TRP:NE1	2.46	0.49
1:C:207:VAL:HG13	1:C:211:GLN:HG2	1.95	0.49
1:C:1270:LEU:HD12	1:C:1315:ILE:HD13	1.95	0.49
1:D:312:VAL:HG11	1:D:348:THR:HG22	1.94	0.49
1:D:918:ASP:HB3	1:D:923:GLU:HG3	1.94	0.49
1:F:1270:LEU:HD12	1:F:1315:ILE:HD13	1.95	0.49
1:A:980:THR:HG22	1:A:982:THR:H	1.78	0.49
1:A:995:ASP:N	1:A:999:GLU:O	2.45	0.49
1:B:315:PHE:CD2	1:B:329:ALA:HB1	2.48	0.49
1:C:435:ARG:NH1	1:C:812:GLY:C	2.64	0.49
1:C:893:LEU:HD23	1:C:941:LEU:HD21	1.95	0.49
1:A:513:THR:OG1	1:A:514:ILE:N	2.45	0.49
1:A:815:THR:OG1	1:B:1083:ASN:OD1	2.28	0.49
1:A:984:LEU:HA	1:B:1397:LEU:HD13	1.94	0.49
1:B:980:THR:HG22	1:B:982:THR:H	1.78	0.49
1:B:1339:THR:OG1	1:B:1341:TRP:NE1	2.46	0.49
1:C:1339:THR:OG1	1:C:1341:TRP:NE1	2.46	0.49
1:E:642:LEU:HD22	1:E:651:TRP:CZ2	2.47	0.49
1:E:893:LEU:HD23	1:E:941:LEU:HD21	1.95	0.49

Continued on next page...

Continued from previous page...

Atom-1	Atom-2	Interatomic distance (Å)	Clash overlap (Å)
1:F:980:THR:HG22	1:F:982:THR:H	1.78	0.49
1:A:837:TYR:CZ	1:A:843:VAL:HG23	2.48	0.49
1:A:1270:LEU:HD12	1:A:1315:ILE:HD13	1.95	0.49
1:B:918:ASP:HB3	1:B:923:GLU:HG3	1.94	0.49
1:F:965:SER:OG	1:F:966:ASP:OD1	2.26	0.49
1:A:1083:ASN:OD1	1:F:815:THR:OG1	2.28	0.48
1:D:893:LEU:HD23	1:D:941:LEU:HD21	1.95	0.48
1:D:1270:LEU:HD12	1:D:1315:ILE:HD13	1.95	0.48
1:E:1339:THR:OG1	1:E:1341:TRP:NE1	2.46	0.48
1:A:67:SER:HA	1:A:70:ASN:ND2	2.29	0.48
1:A:918:ASP:HB3	1:A:923:GLU:HG3	1.94	0.48
1:B:75:ALA:HA	1:B:211:GLN:HE22	1.78	0.48
1:C:642:LEU:HD22	1:C:651:TRP:CZ2	2.47	0.48
1:C:980:THR:HG22	1:C:982:THR:H	1.78	0.48
1:A:109:GLN:NE2	1:A:171:GLY:O	2.38	0.48
1:A:278:VAL:O	1:A:425:SER:OG	2.24	0.48
1:B:513:THR:OG1	1:B:514:ILE:N	2.45	0.48
1:B:837:TYR:CZ	1:B:843:VAL:HG23	2.48	0.48
1:B:893:LEU:HD23	1:B:941:LEU:HD21	1.95	0.48
1:B:1270:LEU:HD12	1:B:1315:ILE:HD13	1.95	0.48
1:C:1117:ARG:HG2	1:C:1135:SER:HB3	1.95	0.48
1:E:1117:ARG:HG2	1:E:1135:SER:HB3	1.95	0.48
1:E:1270:LEU:HD12	1:E:1315:ILE:HD13	1.95	0.48
1:E:1298:PRO:HB2	1:E:1301:THR:HA	1.94	0.48
1:F:903:SER:HG	1:F:974:TYR:HH	1.60	0.48
1:F:1298:PRO:HB2	1:F:1301:THR:HA	1.94	0.48
1:A:268:ASP:CG	1:A:488:ARG:HH12	2.17	0.48
1:A:273:PRO:HG2	1:A:485:LYS:CB	2.43	0.48
1:A:893:LEU:HD23	1:A:941:LEU:HD21	1.95	0.48
1:B:164:GLN:O	1:B:164:GLN:NE2	2.46	0.48
1:B:274:ARG:HD2	1:B:431:ASP:O	2.14	0.48
1:E:837:TYR:CZ	1:E:843:VAL:HG23	2.48	0.48
1:E:274:ARG:HG2	1:E:454:PHE:HE1	1.78	0.48
1:B:833:ASN:OD1	1:B:833:ASN:N	2.46	0.48
1:B:1275:TRP:HB2	1:B:1284:MET:HG2	1.96	0.48
1:C:435:ARG:CZ	1:D:937:THR:O	2.62	0.48
1:C:837:TYR:CZ	1:C:843:VAL:HG23	2.48	0.48
1:D:273:PRO:HG2	1:D:485:LYS:CB	2.44	0.48
1:D:1407:ASP:HA	1:D:1483:GLU:OE2	2.14	0.48
1:E:279:HIS:CE1	1:E:488:ARG:NE	2.62	0.48
1:F:837:TYR:CZ	1:F:843:VAL:HG23	2.48	0.48

Continued on next page...

Continued from previous page...

Atom-1	Atom-2	Interatomic distance (Å)	Clash overlap (Å)
1:F:893:LEU:HD23	1:F:941:LEU:HD21	1.95	0.48
1:A:276:SER:HB3	1:A:485:LYS:HA	1.96	0.48
1:C:1275:TRP:HB2	1:C:1284:MET:HG2	1.96	0.48
1:D:273:PRO:HB2	1:D:485:LYS:HZ3	1.77	0.48
1:D:837:TYR:CZ	1:D:843:VAL:HG23	2.48	0.48
1:E:1407:ASP:HA	1:E:1483:GLU:OE2	2.14	0.48
1:F:1407:ASP:HA	1:F:1483:GLU:OE2	2.14	0.48
1:A:512:PHE:HA	1:A:516:GLU:HG3	1.96	0.48
1:C:1407:ASP:HA	1:C:1483:GLU:OE2	2.14	0.48
1:D:980:THR:HG22	1:D:982:THR:H	1.78	0.48
1:D:1117:ARG:HG2	1:D:1135:SER:HB3	1.95	0.48
1:E:980:THR:HG22	1:E:982:THR:H	1.78	0.48
1:F:207:VAL:HG13	1:F:211:GLN:HG2	1.96	0.48
1:F:1275:TRP:HB2	1:F:1284:MET:HG2	1.96	0.48
1:A:1407:ASP:HA	1:A:1483:GLU:OE2	2.14	0.48
1:B:1440:THR:N	1:B:1470:LEU:O	2.40	0.48
1:C:512:PHE:HA	1:C:516:GLU:HG3	1.96	0.48
1:D:66:ASP:HB3	1:D:69:ILE:HG12	1.96	0.48
1:A:863:THR:CG2	1:F:354:GLN:CG	2.89	0.47
1:A:1275:TRP:HB2	1:A:1284:MET:HG2	1.96	0.47
1:B:512:PHE:HA	1:B:516:GLU:HG3	1.96	0.47
1:B:1407:ASP:HA	1:B:1483:GLU:OE2	2.14	0.47
1:C:466:ASP:N	1:C:466:ASP:OD2	2.43	0.47
1:C:500:VAL:O	1:C:578:ARG:NH2	2.40	0.47
1:D:984:LEU:HA	1:E:1397:LEU:HD13	1.94	0.47
1:D:995:ASP:N	1:D:999:GLU:O	2.45	0.47
1:F:552:THR:HG22	1:F:654:ASN:H	1.79	0.47
1:A:644:THR:O	1:A:699:ASN:N	2.45	0.47
1:F:1440:THR:N	1:F:1470:LEU:O	2.40	0.47
1:A:207:VAL:HG13	1:A:211:GLN:HG2	1.96	0.47
1:A:552:THR:HG22	1:A:654:ASN:H	1.79	0.47
1:B:1117:ARG:HG2	1:B:1135:SER:HB3	1.95	0.47
1:C:833:ASN:OD1	1:C:833:ASN:N	2.46	0.47
1:E:203:ALA:HB2	1:E:209:VAL:HG23	1.96	0.47
1:E:365:ASP:HB2	1:E:371:LEU:HB3	1.96	0.47
1:E:984:LEU:HA	1:F:1397:LEU:HD13	1.96	0.47
1:F:512:PHE:HA	1:F:516:GLU:HG3	1.96	0.47
1:A:312:VAL:HG11	1:A:348:THR:HG22	1.95	0.47
1:B:644:THR:O	1:B:699:ASN:N	2.45	0.47
1:F:87:VAL:HG12	1:F:143:GLU:HB2	1.96	0.47
1:A:833:ASN:OD1	1:A:833:ASN:N	2.46	0.47

Continued on next page...

Continued from previous page...

Atom-1	Atom-2	Interatomic distance (Å)	Clash overlap (Å)
1:D:80:ASP:OD2	1:D:244:ASN:ND2	2.41	0.47
1:D:512:PHE:HA	1:D:516:GLU:HG3	1.96	0.47
1:E:121:GLY:HA3	1:E:330:LEU:HD12	1.97	0.47
1:F:704:MET:HB3	1:F:706:PHE:CE2	2.50	0.47
1:A:75:ALA:HB3	1:B:73:ASP:HB3	1.97	0.47
1:A:863:THR:OG1	1:F:354:GLN:CG	2.59	0.47
1:A:1117:ARG:HG2	1:A:1135:SER:HB3	1.95	0.47
1:B:236:THR:HB	1:C:489:ALA:HA	1.97	0.47
1:B:1447:ALA:N	1:B:1455:ASP:OD2	2.48	0.47
1:C:40:ASN:HD22	1:C:66:ASP:HA	1.80	0.47
1:C:44:SER:OG	1:C:61:GLU:HB3	2.14	0.47
1:D:67:SER:HA	1:D:70:ASN:ND2	2.30	0.47
1:D:164:GLN:O	1:D:164:GLN:NE2	2.46	0.47
1:E:1099:SER:OG	1:E:1207:GLN:NE2	2.46	0.47
1:F:1044:ARG:HG2	1:F:1169:HIS:HB3	1.97	0.47
1:A:335:THR:HG22	1:A:339:LEU:HG	1.97	0.47
1:B:1043:GLY:O	1:B:1348:TYR:OH	2.31	0.47
1:D:1447:ALA:N	1:D:1455:ASP:OD2	2.48	0.47
1:E:1044:ARG:HG2	1:E:1169:HIS:HB3	1.97	0.47
1:E:1447:ALA:N	1:E:1455:ASP:OD2	2.48	0.47
1:F:1099:SER:OG	1:F:1207:GLN:NE2	2.46	0.47
1:A:45:ALA:HB2	1:A:60:ILE:HD12	1.97	0.47
1:A:704:MET:HB3	1:A:706:PHE:CE2	2.50	0.47
1:A:1447:ALA:N	1:A:1455:ASP:OD2	2.48	0.47
1:B:704:MET:HB3	1:B:706:PHE:CE2	2.50	0.47
1:C:1044:ARG:HG2	1:C:1169:HIS:HB3	1.97	0.47
1:D:360:VAL:HG12	1:D:361:VAL:HG13	1.96	0.47
1:F:1447:ALA:N	1:F:1455:ASP:OD2	2.48	0.47
1:A:269:ARG:CZ	1:A:486:ASN:N	2.70	0.47
1:C:1447:ALA:N	1:C:1455:ASP:OD2	2.48	0.47
1:D:279:HIS:HD1	1:D:419:TYR:HB3	1.80	0.47
1:E:258:THR:HG22	1:E:340:MET:HB3	1.97	0.47
1:E:552:THR:HG22	1:E:654:ASN:H	1.79	0.47
1:E:1275:TRP:HB2	1:E:1284:MET:HG2	1.96	0.47
1:F:303:THR:HG23	1:F:304:LYS:HG3	1.97	0.47
1:B:552:THR:HG22	1:B:654:ASN:H	1.79	0.46
1:E:442:ASP:HA	1:E:447:PRO:HA	1.96	0.46
1:F:1117:ARG:HG2	1:F:1135:SER:HB3	1.95	0.46
1:B:1044:ARG:HG2	1:B:1169:HIS:HB3	1.97	0.46
1:D:1099:SER:OG	1:D:1207:GLN:NE2	2.46	0.46
1:E:512:PHE:HA	1:E:516:GLU:HG3	1.96	0.46

Continued on next page...

Continued from previous page...

Atom-1	Atom-2	Interatomic distance (Å)	Clash overlap (Å)
1:F:274:ARG:NH1	1:F:433:ALA:O	2.49	0.46
1:A:57:PRO:HG3	1:A:339:LEU:HD22	1.97	0.46
1:A:279:HIS:HD1	1:A:419:TYR:HB3	1.79	0.46
1:A:1099:SER:OG	1:A:1207:GLN:NE2	2.46	0.46
1:C:786:ASP:OD1	1:C:786:ASP:N	2.49	0.46
1:E:625:PHE:CE1	1:E:627:TYR:HB3	2.50	0.46
1:F:358:THR:HG21	1:F:434:LYS:H	1.79	0.46
1:B:995:ASP:N	1:B:999:GLU:O	2.45	0.46
1:D:704:MET:HB3	1:D:706:PHE:CE2	2.50	0.46
1:D:1044:ARG:HG2	1:D:1169:HIS:HB3	1.97	0.46
1:D:1275:TRP:HB2	1:D:1284:MET:HG2	1.96	0.46
1:E:786:ASP:N	1:E:786:ASP:OD1	2.49	0.46
1:E:794:ASP:OD1	1:E:998:GLY:HA3	2.16	0.46
1:F:1270:LEU:HD21	1:F:1284:MET:HB2	1.98	0.46
1:A:360:VAL:HG12	1:A:361:VAL:HG13	1.98	0.46
1:B:133:GLY:HA3	1:B:141:THR:HG22	1.98	0.46
1:B:626:ASN:O	1:B:720:MET:HA	2.16	0.46
1:C:773:ASP:OD2	1:C:775:GLY:N	2.43	0.46
1:E:995:ASP:N	1:E:999:GLU:O	2.45	0.46
1:E:1050:HIS:CD2	1:E:1051:ALA:H	2.33	0.46
1:E:1238:SER:HG	1:E:1243:TYR:HH	1.60	0.46
1:F:500:VAL:O	1:F:578:ARG:NH2	2.40	0.46
1:F:605:LEU:HD13	1:F:698:VAL:HG13	1.98	0.46
1:A:66:ASP:HB3	1:A:69:ILE:HG12	1.97	0.46
1:A:1397:LEU:HD13	1:F:984:LEU:HA	1.98	0.46
1:B:625:PHE:CE1	1:B:627:TYR:HB3	2.50	0.46
1:C:704:MET:HB3	1:C:706:PHE:CE2	2.50	0.46
1:D:1050:HIS:CD2	1:D:1051:ALA:H	2.34	0.46
1:E:1270:LEU:HD21	1:E:1284:MET:HB2	1.98	0.46
1:A:770:ASN:HB2	1:A:776:THR:HG21	1.98	0.46
1:C:71:ASP:OD1	1:C:76:LYS:HE2	2.16	0.46
1:C:552:THR:HG22	1:C:654:ASN:H	1.79	0.46
1:C:644:THR:O	1:C:699:ASN:N	2.45	0.46
1:D:552:THR:HG22	1:D:654:ASN:H	1.79	0.46
1:E:449:THR:HG23	1:F:858:LEU:HG	1.93	0.46
1:F:1050:HIS:CD2	1:F:1051:ALA:H	2.33	0.46
1:A:1050:HIS:CD2	1:A:1051:ALA:H	2.33	0.46
1:B:730:ASP:HA	1:B:884:LEU:HD23	1.98	0.46
1:C:77:GLY:H	1:D:94:VAL:HG21	1.81	0.46
1:C:626:ASN:O	1:C:720:MET:HA	2.16	0.46
1:D:90:MET:HB3	1:D:98:TRP:HB3	1.98	0.46

Continued on next page...

Continued from previous page...

Atom-1	Atom-2	Interatomic distance (Å)	Clash overlap (Å)
1:E:704:MET:HB3	1:E:706:PHE:CE2	2.50	0.46
1:F:389:GLY:HA2	1:F:403:PRO:HG3	1.98	0.46
1:F:644:THR:O	1:F:699:ASN:N	2.45	0.46
1:A:269:ARG:CZ	1:A:485:LYS:C	2.72	0.46
1:A:1044:ARG:HG2	1:A:1169:HIS:HB3	1.97	0.46
1:B:984:LEU:HA	1:C:1397:LEU:HD13	1.97	0.46
1:C:180:ASN:OD1	1:C:181:THR:N	2.49	0.46
1:C:730:ASP:HA	1:C:884:LEU:HD23	1.98	0.46
1:C:1050:HIS:CD2	1:C:1051:ALA:H	2.33	0.46
1:D:136:ALA:O	1:D:182:LEU:HD11	2.16	0.46
1:D:143:GLU:HB2	1:E:196:GLU:OE2	2.16	0.46
1:E:605:LEU:HD13	1:E:698:VAL:HG13	1.98	0.46
1:A:626:ASN:O	1:A:720:MET:HA	2.16	0.45
1:B:786:ASP:OD1	1:B:786:ASP:N	2.49	0.45
1:C:81:VAL:HG11	1:C:90:MET:HE2	1.98	0.45
1:C:1369:VAL:HG22	1:C:1386:ILE:HG12	1.98	0.45
1:D:895:VAL:HG12	1:D:988:VAL:HG12	1.98	0.45
1:F:115:ALA:HA	1:F:330:LEU:HD13	1.98	0.45
1:F:794:ASP:OD1	1:F:998:GLY:HA3	2.16	0.45
1:A:1206:LEU:O	1:A:1227:ALA:N	2.40	0.45
1:B:299:PHE:CE1	1:B:314:THR:HG23	2.51	0.45
1:C:275:VAL:HG12	1:C:275:VAL:O	2.16	0.45
1:D:794:ASP:OD1	1:D:998:GLY:HA3	2.16	0.45
1:E:626:ASN:O	1:E:720:MET:HA	2.16	0.45
1:C:794:ASP:OD1	1:C:998:GLY:HA3	2.16	0.45
1:C:984:LEU:HA	1:D:1397:LEU:HD13	1.97	0.45
1:D:1043:GLY:O	1:D:1348:TYR:OH	2.31	0.45
1:E:92:GLN:OE1	1:E:211:GLN:HG3	2.17	0.45
1:A:794:ASP:OD1	1:A:998:GLY:HA3	2.16	0.45
1:B:794:ASP:OD1	1:B:998:GLY:HA3	2.16	0.45
1:B:795:LEU:HB3	1:B:799:ASP:O	2.17	0.45
1:B:1270:LEU:HD21	1:B:1284:MET:HB2	1.98	0.45
1:C:1270:LEU:HD21	1:C:1284:MET:HB2	1.98	0.45
1:E:439:ALA:HB3	1:E:450:ILE:HD12	1.98	0.45
1:F:315:PHE:CD2	1:F:329:ALA:HB1	2.52	0.45
1:F:833:ASN:OD1	1:F:833:ASN:N	2.46	0.45
1:A:605:LEU:HD13	1:A:698:VAL:HG13	1.98	0.45
1:B:723:PHE:HE1	1:B:742:ILE:HG22	1.82	0.45
1:B:770:ASN:HB2	1:B:776:THR:HG21	1.98	0.45
1:B:1050:HIS:CD2	1:B:1051:ALA:H	2.33	0.45
1:C:770:ASN:HB2	1:C:776:THR:HG21	1.98	0.45

Continued on next page...

Continued from previous page...

Atom-1	Atom-2	Interatomic distance (Å)	Clash overlap (Å)
1:E:75:ALA:HA	1:E:211:GLN:HE22	1.82	0.45
1:E:299:PHE:CE1	1:E:314:THR:HG23	2.51	0.45
1:E:723:PHE:HE1	1:E:742:ILE:HG22	1.82	0.45
1:E:773:ASP:OD2	1:E:775:GLY:N	2.43	0.45
1:F:69:ILE:HA	1:F:76:LYS:HE3	1.97	0.45
1:F:625:PHE:CE1	1:F:627:TYR:HB3	2.50	0.45
1:A:363:ILE:HD11	1:A:388:PHE:HB2	1.97	0.45
1:B:1014:GLY:N	1:B:1212:ASP:OD2	2.50	0.45
1:C:848:GLU:O	1:C:848:GLU:HG3	2.17	0.45
1:D:273:PRO:HB2	1:D:485:LYS:HG2	1.97	0.45
1:D:605:LEU:HD13	1:D:698:VAL:HG13	1.98	0.45
1:D:770:ASN:HB2	1:D:776:THR:HG21	1.98	0.45
1:D:848:GLU:HG3	1:D:848:GLU:O	2.17	0.45
1:E:278:VAL:O	1:E:425:SER:OG	2.22	0.45
1:F:461:ILE:HG12	1:F:476:VAL:HG22	1.98	0.45
1:A:1270:LEU:O	1:A:1273:ILE:HG22	2.17	0.45
1:C:53:TYR:O	1:C:285:LEU:HD11	2.17	0.45
1:D:1014:GLY:N	1:D:1212:ASP:OD2	2.50	0.45
1:D:1369:VAL:HG22	1:D:1386:ILE:HG12	1.98	0.45
1:E:1369:VAL:HG22	1:E:1386:ILE:HG12	1.98	0.45
1:F:302:ASN:ND2	1:F:305:ASN:HB2	2.32	0.45
1:F:1369:VAL:HG22	1:F:1386:ILE:HG12	1.98	0.45
1:A:272:PHE:HB3	1:A:429:ILE:HG13	1.99	0.45
1:B:311:ASN:ND2	1:B:333:ARG:HD3	2.31	0.45
1:C:354:GLN:HE21	1:D:863:THR:HG23	1.79	0.45
1:C:895:VAL:HG12	1:C:988:VAL:HG12	1.98	0.45
1:D:1270:LEU:HD21	1:D:1284:MET:HB2	1.98	0.45
1:E:895:VAL:HG12	1:E:988:VAL:HG12	1.98	0.45
1:E:1043:GLY:O	1:E:1348:TYR:OH	2.31	0.45
1:F:1270:LEU:O	1:F:1273:ILE:HG22	2.17	0.45
1:A:625:PHE:CE1	1:A:627:TYR:HB3	2.50	0.45
1:A:1369:VAL:HG22	1:A:1386:ILE:HG12	1.98	0.45
1:B:258:THR:HG22	1:B:340:MET:HB3	1.99	0.45
1:B:466:ASP:OD2	1:B:466:ASP:N	2.43	0.45
1:B:605:LEU:HD13	1:B:698:VAL:HG13	1.98	0.45
1:C:304:LYS:NZ	1:C:350:ASP:OD1	2.49	0.45
1:C:315:PHE:CD2	1:C:329:ALA:HB1	2.52	0.45
1:C:795:LEU:HB3	1:C:799:ASP:O	2.17	0.45
1:C:1068:ASP:OD2	1:C:1156:LYS:NZ	2.34	0.45
1:D:67:SER:HA	1:D:70:ASN:HD21	1.82	0.45
1:D:626:ASN:O	1:D:720:MET:HA	2.16	0.45

Continued on next page...

Continued from previous page...

Atom-1	Atom-2	Interatomic distance (Å)	Clash overlap (Å)
1:E:92:GLN:HE21	1:E:96:GLY:HA2	1.82	0.45
1:F:786:ASP:OD1	1:F:786:ASP:N	2.49	0.45
1:A:723:PHE:HE1	1:A:742:ILE:HG22	1.82	0.45
1:A:795:LEU:HB3	1:A:799:ASP:O	2.17	0.45
1:B:115:ALA:HA	1:B:330:LEU:HD22	1.99	0.45
1:C:366:ASN:ND2	1:C:424:LYS:O	2.50	0.45
1:E:104:ASP:OD1	1:E:105:ARG:N	2.50	0.45
1:F:626:ASN:O	1:F:720:MET:HA	2.16	0.45
1:A:730:ASP:HA	1:A:884:LEU:HD23	1.98	0.44
1:A:903:SER:OG	1:A:974:TYR:OH	2.29	0.44
1:B:1369:VAL:HG22	1:B:1386:ILE:HG12	1.98	0.44
1:C:723:PHE:HE1	1:C:742:ILE:HG22	1.82	0.44
1:D:1270:LEU:O	1:D:1273:ILE:HG22	2.17	0.44
1:E:133:GLY:HA3	1:E:141:THR:HG22	1.99	0.44
1:C:302:ASN:ND2	1:C:305:ASN:HB2	2.32	0.44
1:C:460:ASP:OD2	1:C:461:ILE:N	2.50	0.44
1:C:1099:SER:OG	1:C:1207:GLN:NE2	2.46	0.44
1:C:1270:LEU:O	1:C:1273:ILE:HG22	2.17	0.44
1:D:723:PHE:HE1	1:D:742:ILE:HG22	1.82	0.44
1:E:461:ILE:HG12	1:E:476:VAL:HG22	1.99	0.44
1:F:44:SER:OG	1:F:61:GLU:HB3	2.16	0.44
1:C:605:LEU:HD13	1:C:698:VAL:HG13	1.98	0.44
1:C:903:SER:OG	1:C:974:TYR:OH	2.29	0.44
1:D:730:ASP:HA	1:D:884:LEU:HD23	1.98	0.44
1:E:57:PRO:HG3	1:E:339:LEU:HD22	1.99	0.44
1:E:848:GLU:O	1:E:848:GLU:HG3	2.17	0.44
1:F:848:GLU:O	1:F:848:GLU:HG3	2.17	0.44
1:A:461:ILE:HG12	1:A:476:VAL:HG22	1.98	0.44
1:A:786:ASP:OD1	1:A:786:ASP:N	2.49	0.44
1:A:1270:LEU:HD21	1:A:1284:MET:HB2	1.98	0.44
1:B:1270:LEU:O	1:B:1273:ILE:HG22	2.17	0.44
1:C:1014:GLY:N	1:C:1212:ASP:OD2	2.50	0.44
1:D:47:ASN:N	1:D:52:ASN:OD1	2.49	0.44
1:A:258:THR:HG22	1:A:340:MET:HG2	1.99	0.44
1:B:57:PRO:HG3	1:B:339:LEU:HD22	1.99	0.44
1:B:1273:ILE:HD12	1:B:1273:ILE:HA	1.85	0.44
1:C:162:GLY:HA2	1:C:175:THR:HB	2.00	0.44
1:D:269:ARG:NH1	1:D:485:LYS:HA	2.32	0.44
1:D:460:ASP:OD2	1:D:461:ILE:N	2.51	0.44
1:E:770:ASN:HB2	1:E:776:THR:HG21	1.98	0.44
1:E:1270:LEU:O	1:E:1273:ILE:HG22	2.17	0.44

Continued on next page...

Continued from previous page...

Atom-1	Atom-2	Interatomic distance (Å)	Clash overlap (Å)
1:F:730:ASP:HA	1:F:884:LEU:HD23	1.98	0.44
1:A:848:GLU:O	1:A:848:GLU:HG3	2.17	0.44
1:A:937:THR:O	1:F:435:ARG:CD	2.65	0.44
1:C:233:LEU:HD13	1:C:239:VAL:HG21	2.00	0.44
1:D:795:LEU:HB3	1:D:799:ASP:O	2.17	0.44
1:E:730:ASP:HA	1:E:884:LEU:HD23	1.98	0.44
1:A:55:SER:H	1:A:58:GLN:NE2	2.16	0.44
1:A:136:ALA:O	1:A:182:LEU:HD11	2.17	0.44
1:A:1026:PRO:HG2	1:A:1157:PHE:HA	2.00	0.44
1:B:848:GLU:HG3	1:B:848:GLU:O	2.17	0.44
1:C:157:THR:H	1:C:161:ASN:HD22	1.64	0.44
1:C:1143:ALA:HB3	1:C:1146:ALA:HB2	2.00	0.44
1:D:390:ILE:HD12	1:D:397:LEU:HD13	2.00	0.44
1:E:795:LEU:HB3	1:E:799:ASP:O	2.17	0.44
1:E:1096:LEU:HD12	1:E:1210:TYR:HB2	2.00	0.44
1:F:770:ASN:HB2	1:F:776:THR:HG21	1.98	0.44
1:A:1267:THR:HB	1:A:1304:ARG:HH12	1.83	0.44
1:B:1026:PRO:HG2	1:B:1157:PHE:HA	2.00	0.44
1:D:343:ASP:HB2	1:D:445:GLU:CD	2.39	0.44
1:E:644:THR:O	1:E:699:ASN:N	2.45	0.44
1:E:1014:GLY:N	1:E:1212:ASP:OD2	2.50	0.44
1:A:390:ILE:HD12	1:A:397:LEU:HD13	2.00	0.44
1:B:460:ASP:OD2	1:B:461:ILE:N	2.50	0.44
1:C:239:VAL:N	1:C:254:LEU:O	2.28	0.44
1:D:88:LEU:HD13	1:D:231:TYR:HE2	1.83	0.44
1:D:644:THR:O	1:D:699:ASN:N	2.45	0.44
1:E:460:ASP:OD2	1:E:461:ILE:N	2.50	0.44
1:F:460:ASP:OD2	1:F:461:ILE:N	2.50	0.44
1:F:1267:THR:HB	1:F:1304:ARG:HH12	1.83	0.44
1:C:41:LEU:HD13	1:C:243:TYR:HB2	2.00	0.43
1:C:461:ILE:HG12	1:C:476:VAL:HG22	1.99	0.43
1:D:1143:ALA:HB3	1:D:1146:ALA:HB2	2.00	0.43
1:E:493:LEU:HD22	1:E:747:ALA:HB3	2.00	0.43
1:F:723:PHE:HE1	1:F:742:ILE:HG22	1.82	0.43
1:F:1026:PRO:HG2	1:F:1157:PHE:HA	2.00	0.43
1:B:442:ASP:HA	1:B:447:PRO:HA	1.99	0.43
1:B:447:PRO:HB2	1:C:858:LEU:HD11	2.00	0.43
1:B:895:VAL:HG12	1:B:988:VAL:HG12	1.98	0.43
1:B:1143:ALA:HB3	1:B:1146:ALA:HB2	2.00	0.43
1:D:461:ILE:HG12	1:D:476:VAL:HG22	1.99	0.43
1:D:786:ASP:OD1	1:D:786:ASP:N	2.49	0.43

Continued on next page...

Continued from previous page...

Atom-1	Atom-2	Interatomic distance (Å)	Clash overlap (Å)
1:F:493:LEU:HD22	1:F:747:ALA:HB3	2.00	0.43
1:F:795:LEU:HB3	1:F:799:ASP:O	2.17	0.43
1:F:895:VAL:HG12	1:F:988:VAL:HG12	1.98	0.43
1:A:451:LEU:HD23	1:A:452:VAL:O	2.18	0.43
1:A:1096:LEU:HD12	1:A:1210:TYR:HB2	2.00	0.43
1:A:1422:LYS:NZ	1:F:1219:ASP:OD2	2.33	0.43
1:E:75:ALA:HB3	1:F:73:ASP:HB3	1.99	0.43
1:E:164:GLN:O	1:E:164:GLN:NE2	2.48	0.43
1:E:447:PRO:HB2	1:F:858:LEU:HD11	2.01	0.43
1:E:1267:THR:HB	1:E:1304:ARG:HH12	1.83	0.43
1:F:1143:ALA:HB3	1:F:1146:ALA:HB2	2.00	0.43
1:A:1122:ASP:OD1	1:A:1123:VAL:N	2.52	0.43
1:B:461:ILE:HG12	1:B:476:VAL:HG22	1.99	0.43
1:C:349:LEU:HD23	1:C:402:ILE:HG21	2.00	0.43
1:C:1206:LEU:O	1:C:1227:ALA:N	2.40	0.43
1:D:269:ARG:NH2	1:D:276:SER:HB2	2.31	0.43
1:E:149:ILE:HG13	1:E:151:ILE:HG12	2.01	0.43
1:F:233:LEU:HD13	1:F:239:VAL:HG21	2.00	0.43
1:F:1014:GLY:N	1:F:1212:ASP:OD2	2.50	0.43
1:A:460:ASP:OD2	1:A:461:ILE:N	2.50	0.43
1:B:493:LEU:HD22	1:B:747:ALA:HB3	2.00	0.43
1:B:1267:THR:HB	1:B:1304:ARG:HH12	1.83	0.43
1:C:435:ARG:CD	1:D:937:THR:O	2.67	0.43
1:E:268:ASP:CG	1:E:487:SER:OG	2.57	0.43
1:F:1273:ILE:HD12	1:F:1273:ILE:HA	1.85	0.43
1:A:47:ASN:N	1:A:52:ASN:OD1	2.51	0.43
1:A:117:THR:HG23	1:A:120:SER:HB2	1.99	0.43
1:A:1014:GLY:N	1:A:1212:ASP:OD2	2.50	0.43
1:C:435:ARG:CD	1:D:938:GLY:HA3	2.48	0.43
1:C:1026:PRO:HG2	1:C:1157:PHE:HA	2.00	0.43
1:E:269:ARG:NH1	1:E:276:SER:OG	2.52	0.43
1:E:279:HIS:ND1	1:E:425:SER:HB2	2.33	0.43
1:E:1026:PRO:HG2	1:E:1157:PHE:HA	2.00	0.43
1:F:162:GLY:HA2	1:F:175:THR:HB	2.00	0.43
1:F:1122:ASP:OD1	1:F:1123:VAL:N	2.52	0.43
1:B:75:ALA:HB3	1:C:73:ASP:HB3	2.00	0.43
1:C:493:LEU:HD22	1:C:747:ALA:HB3	2.00	0.43
1:C:1219:ASP:OD2	1:D:1422:LYS:NZ	2.33	0.43
1:D:1096:LEU:HD12	1:D:1210:TYR:HB2	2.00	0.43
1:E:333:ARG:NH2	1:F:673:ASN:OD1	2.51	0.43
1:A:895:VAL:HG12	1:A:988:VAL:HG12	1.98	0.43

Continued on next page...

Continued from previous page...

Atom-1	Atom-2	Interatomic distance (Å)	Clash overlap (Å)
1:B:986:ILE:N	1:B:1007:ALA:O	2.52	0.43
1:B:1096:LEU:HD12	1:B:1210:TYR:HB2	2.00	0.43
1:C:141:THR:O	1:C:144:THR:HG22	2.19	0.43
1:D:104:ASP:OD1	1:D:105:ARG:N	2.52	0.43
1:F:995:ASP:N	1:F:999:GLU:O	2.45	0.43
1:D:442:ASP:HB2	1:D:447:PRO:HB3	2.01	0.43
1:D:986:ILE:N	1:D:1007:ALA:O	2.52	0.43
1:E:833:ASN:OD1	1:E:833:ASN:N	2.46	0.43
1:F:93:ALA:HB1	1:F:198:LYS:HB3	2.01	0.43
1:F:265:LEU:HD12	1:F:282:ILE:HG12	2.00	0.43
1:A:1143:ALA:HB3	1:A:1146:ALA:HB2	2.00	0.43
1:B:985:ASP:OD1	1:B:985:ASP:N	2.49	0.43
1:B:1122:ASP:OD1	1:B:1123:VAL:N	2.52	0.43
1:E:209:VAL:HG12	1:E:214:LEU:HB2	2.00	0.43
1:E:986:ILE:N	1:E:1007:ALA:O	2.52	0.43
1:F:275:VAL:HG12	1:F:275:VAL:O	2.19	0.43
1:F:986:ILE:N	1:F:1007:ALA:O	2.52	0.43
1:F:1480:VAL:O	1:F:1492:GLY:N	2.42	0.43
1:C:361:VAL:HG11	1:C:427:LEU:HD23	2.00	0.42
1:C:1024:PRO:HB3	1:C:1257:ASP:HA	2.01	0.42
1:C:1096:LEU:HD12	1:C:1210:TYR:HB2	2.00	0.42
1:D:1122:ASP:OD1	1:D:1123:VAL:N	2.52	0.42
1:E:236:THR:HB	1:F:489:ALA:HA	2.00	0.42
1:E:874:ASP:OD2	1:E:904:THR:HG22	2.20	0.42
1:F:363:ILE:HA	1:F:426:VAL:O	2.19	0.42
1:A:466:ASP:OD2	1:A:466:ASP:N	2.44	0.42
1:A:986:ILE:N	1:A:1007:ALA:O	2.52	0.42
1:B:71:ASP:OD1	1:B:74:GLU:HB2	2.19	0.42
1:C:122:LEU:HD23	1:C:316:TYR:CD2	2.54	0.42
1:C:874:ASP:OD2	1:C:904:THR:HG22	2.19	0.42
1:C:1436:GLU:OE1	1:C:1466:THR:HG22	2.19	0.42
1:F:1096:LEU:HD12	1:F:1210:TYR:HB2	2.00	0.42
1:A:279:HIS:H	1:A:488:ARG:NH2	1.83	0.42
1:C:111:ALA:HB1	1:C:122:LEU:HB3	2.00	0.42
1:C:1122:ASP:OD1	1:C:1123:VAL:N	2.52	0.42
1:D:1024:PRO:HB3	1:D:1257:ASP:HA	2.01	0.42
1:D:1267:THR:HB	1:D:1304:ARG:HH12	1.83	0.42
1:E:1143:ALA:HB3	1:E:1146:ALA:HB2	2.00	0.42
1:F:773:ASP:OD2	1:F:775:GLY:N	2.43	0.42
1:A:259:VAL:HG21	1:A:285:LEU:HB2	2.01	0.42
1:A:371:LEU:HD12	1:A:371:LEU:HA	1.91	0.42

Continued on next page...

Continued from previous page...

Atom-1	Atom-2	Interatomic distance (Å)	Clash overlap (Å)
1:A:1024:PRO:HB3	1:A:1257:ASP:HA	2.01	0.42
1:A:1268:TYR:O	1:A:1302:ASP:HB3	2.20	0.42
1:B:1024:PRO:HB3	1:B:1257:ASP:HA	2.01	0.42
1:B:1436:GLU:OE1	1:B:1466:THR:HG22	2.19	0.42
1:C:347:LEU:HD11	1:C:441:LEU:HD21	2.02	0.42
1:D:420:ASP:OD2	1:D:422:SER:OG	2.38	0.42
1:F:1024:PRO:HB3	1:F:1257:ASP:HA	2.01	0.42
1:A:94:VAL:HG21	1:F:77:GLY:H	1.85	0.42
1:A:269:ARG:NH2	1:A:485:LYS:CA	2.82	0.42
1:A:493:LEU:HD22	1:A:747:ALA:HB3	2.00	0.42
1:B:305:ASN:HB3	1:B:310:PHE:CE2	2.54	0.42
1:B:419:TYR:HA	1:B:425:SER:HA	2.00	0.42
1:B:874:ASP:OD2	1:B:904:THR:HG22	2.19	0.42
1:C:249:VAL:HG21	1:D:411:PRO:HD2	2.02	0.42
1:D:1268:TYR:O	1:D:1302:ASP:HB3	2.20	0.42
1:E:45:ALA:HB2	1:E:60:ILE:HD12	2.01	0.42
1:E:1122:ASP:OD1	1:E:1123:VAL:N	2.52	0.42
1:F:81:VAL:HG21	1:F:90:MET:HE2	2.00	0.42
1:F:1268:TYR:O	1:F:1302:ASP:HB3	2.20	0.42
1:A:239:VAL:O	1:A:254:LEU:N	2.48	0.42
1:B:721:ASP:N	1:B:721:ASP:OD1	2.53	0.42
1:B:1099:SER:OG	1:B:1207:GLN:NE2	2.46	0.42
1:C:298:THR:HB	1:C:315:PHE:HB2	2.01	0.42
1:C:364:GLN:NE2	1:C:428:LYS:HD2	2.34	0.42
1:C:995:ASP:N	1:C:999:GLU:O	2.45	0.42
1:D:493:LEU:HD22	1:D:747:ALA:HB3	2.00	0.42
1:D:514:ILE:O	1:D:600:LEU:HD12	2.20	0.42
1:D:1026:PRO:HG2	1:D:1157:PHE:HA	2.00	0.42
1:E:435:ARG:HB3	1:E:454:PHE:HE2	1.84	0.42
1:E:1268:TYR:O	1:E:1302:ASP:HB3	2.20	0.42
1:F:435:ARG:NH1	1:F:812:GLY:C	2.67	0.42
1:F:909:ASN:ND2	1:F:971:PRO:O	2.46	0.42
1:A:514:ILE:O	1:A:600:LEU:HD12	2.20	0.42
1:B:278:VAL:O	1:B:425:SER:OG	2.23	0.42
1:B:579:LEU:HD22	1:B:718:ILE:HB	2.02	0.42
1:B:773:ASP:OD2	1:B:775:GLY:N	2.43	0.42
1:C:305:ASN:HB3	1:C:310:PHE:CE2	2.54	0.42
1:C:579:LEU:HD22	1:C:718:ILE:HB	2.02	0.42
1:D:104:ASP:HA	1:D:231:TYR:O	2.20	0.42
1:D:833:ASN:OD1	1:D:833:ASN:N	2.46	0.42
1:E:50:PHE:CD2	1:E:285:LEU:HD12	2.55	0.42

Continued on next page...

Continued from previous page...

Atom-1	Atom-2	Interatomic distance (Å)	Clash overlap (Å)
1:F:514:ILE:O	1:F:600:LEU:HD12	2.20	0.42
1:F:721:ASP:OD1	1:F:721:ASP:N	2.53	0.42
1:A:874:ASP:OD2	1:A:904:THR:HG22	2.20	0.42
1:C:514:ILE:O	1:C:600:LEU:HD12	2.20	0.42
1:C:595:PHE:N	1:C:595:PHE:CD2	2.88	0.42
1:C:1267:THR:HB	1:C:1304:ARG:HH12	1.83	0.42
1:E:453:GLY:C	1:E:454:PHE:CG	2.93	0.42
1:F:305:ASN:HB3	1:F:310:PHE:CE2	2.55	0.42
1:F:762:GLU:O	1:F:788:SER:HA	2.20	0.42
1:F:1255:GLU:HA	1:F:1256:PRO:HD3	1.89	0.42
1:A:852:LEU:HD11	1:A:990:TYR:OH	2.20	0.42
1:A:1273:ILE:HD12	1:A:1273:ILE:HA	1.85	0.42
1:B:54:MET:HA	1:B:285:LEU:HD21	2.01	0.42
1:B:279:HIS:ND1	1:B:425:SER:HB2	2.34	0.42
1:C:364:GLN:NE2	1:C:425:SER:O	2.53	0.42
1:C:986:ILE:N	1:C:1007:ALA:O	2.52	0.42
1:C:1268:TYR:O	1:C:1302:ASP:HB3	2.20	0.42
1:D:278:VAL:O	1:D:425:SER:OG	2.26	0.42
1:D:721:ASP:OD1	1:D:721:ASP:N	2.53	0.42
1:D:893:LEU:HD12	1:D:894:ASP:N	2.35	0.42
1:E:54:MET:HA	1:E:285:LEU:HD21	2.02	0.42
1:F:874:ASP:OD2	1:F:904:THR:HG22	2.19	0.42
1:A:273:PRO:HB3	1:A:482:ASP:O	2.20	0.42
1:A:595:PHE:N	1:A:595:PHE:CD2	2.88	0.42
1:A:762:GLU:O	1:A:788:SER:HA	2.20	0.42
1:A:828:GLY:HA3	1:A:990:TYR:HE2	1.85	0.42
1:A:1100:VAL:HG22	1:A:1206:LEU:HD13	2.02	0.42
1:B:595:PHE:N	1:B:595:PHE:CD2	2.88	0.42
1:B:893:LEU:HD12	1:B:894:ASP:N	2.35	0.42
1:C:893:LEU:HD12	1:C:894:ASP:N	2.35	0.42
1:D:276:SER:CB	1:D:485:LYS:CB	2.94	0.42
1:E:595:PHE:N	1:E:595:PHE:CD2	2.88	0.42
1:D:371:LEU:HD12	1:D:371:LEU:HA	1.92	0.41
1:D:1436:GLU:OE1	1:D:1466:THR:HG22	2.19	0.41
1:A:1043:GLY:O	1:A:1348:TYR:OH	2.31	0.41
1:B:197:ALA:HB1	1:B:225:TRP:NE1	2.35	0.41
1:B:304:LYS:NZ	1:B:352:ASP:O	2.53	0.41
1:B:453:GLY:C	1:B:454:PHE:CG	2.93	0.41
1:B:1268:TYR:O	1:B:1302:ASP:HB3	2.20	0.41
1:C:1070:THR:HG22	1:C:1154:ASN:HB3	2.02	0.41
1:D:625:PHE:CE1	1:D:627:TYR:HB3	2.51	0.41

Continued on next page...

Continued from previous page...

Atom-1	Atom-2	Interatomic distance (Å)	Clash overlap (Å)
1:D:874:ASP:OD2	1:D:904:THR:HG22	2.19	0.41
1:D:1100:VAL:HG22	1:D:1206:LEU:HD13	2.02	0.41
1:E:721:ASP:OD1	1:E:721:ASP:N	2.53	0.41
1:D:595:PHE:CD2	1:D:595:PHE:N	2.88	0.41
1:D:1070:THR:HG22	1:D:1154:ASN:HB3	2.02	0.41
1:E:762:GLU:O	1:E:788:SER:HA	2.20	0.41
1:E:852:LEU:HD11	1:E:990:TYR:OH	2.20	0.41
1:E:893:LEU:HD12	1:E:894:ASP:N	2.35	0.41
1:E:1100:VAL:HG22	1:E:1206:LEU:HD13	2.02	0.41
1:F:277:GLN:OE1	1:F:428:LYS:HG2	2.20	0.41
1:F:852:LEU:HD11	1:F:990:TYR:OH	2.20	0.41
1:A:104:ASP:HA	1:A:231:TYR:O	2.20	0.41
1:B:50:PHE:CD2	1:B:285:LEU:HD12	2.55	0.41
1:B:365:ASP:HB2	1:B:371:LEU:HB3	2.01	0.41
1:B:762:GLU:O	1:B:788:SER:HA	2.20	0.41
1:C:149:ILE:HG13	1:C:151:ILE:HG12	2.02	0.41
1:C:852:LEU:HD11	1:C:990:TYR:OH	2.20	0.41
1:D:117:THR:HG23	1:D:120:SER:HB2	2.03	0.41
1:E:1436:GLU:OE1	1:E:1466:THR:HG22	2.20	0.41
1:F:50:PHE:O	1:F:53:TYR:HD1	2.03	0.41
1:F:519:THR:HA	1:F:520:PRO:HD3	1.94	0.41
1:A:893:LEU:HD12	1:A:894:ASP:N	2.35	0.41
1:B:144:THR:HA	1:B:231:TYR:HE2	1.86	0.41
1:B:514:ILE:O	1:B:600:LEU:HD12	2.20	0.41
1:B:828:GLY:HA3	1:B:990:TYR:HE2	1.85	0.41
1:C:895:VAL:HG22	1:C:934:LEU:HD22	2.03	0.41
1:C:1100:VAL:HG22	1:C:1206:LEU:HD13	2.02	0.41
1:D:361:VAL:HG12	1:D:429:ILE:HD13	2.03	0.41
1:D:852:LEU:HD11	1:D:990:TYR:OH	2.20	0.41
1:D:895:VAL:HG22	1:D:934:LEU:HD22	2.03	0.41
1:E:73:ASP:OD1	1:E:73:ASP:N	2.45	0.41
1:F:268:ASP:OD1	1:F:269:ARG:N	2.54	0.41
1:F:277:GLN:HB3	1:F:425:SER:HB3	2.02	0.41
1:F:595:PHE:N	1:F:595:PHE:CD2	2.88	0.41
1:A:225:TRP:CE3	1:A:226:PRO:HA	2.56	0.41
1:A:373:GLN:HE21	1:A:375:ASN:C	2.23	0.41
1:A:525:THR:HB	1:A:595:PHE:HB2	2.03	0.41
1:A:1219:ASP:OD2	1:B:1422:LYS:NZ	2.35	0.41
1:A:1436:GLU:OE1	1:A:1466:THR:HG22	2.20	0.41
1:C:553:LEU:HB2	1:C:595:PHE:HE1	1.85	0.41
1:C:721:ASP:OD1	1:C:721:ASP:N	2.53	0.41

Continued on next page...

Continued from previous page...

Atom-1	Atom-2	Interatomic distance (Å)	Clash overlap (Å)
1:D:1077:ASP:OD2	1:D:1210:TYR:OH	2.38	0.41
1:E:514:ILE:O	1:E:600:LEU:HD12	2.20	0.41
1:E:828:GLY:HA3	1:E:990:TYR:HE2	1.85	0.41
1:F:1043:GLY:O	1:F:1348:TYR:OH	2.31	0.41
1:B:49:GLN:HG2	1:B:50:PHE:CE1	2.56	0.41
1:B:354:GLN:HE21	1:C:861:ILE:CD1	2.26	0.41
1:C:525:THR:HB	1:C:595:PHE:HB2	2.03	0.41
1:C:1412:SER:HA	1:C:1417:ASP:HA	2.03	0.41
1:D:825:SER:HB3	1:D:995:ASP:O	2.21	0.41
1:D:828:GLY:HA3	1:D:990:TYR:HE2	1.85	0.41
1:E:845:ILE:N	1:E:953:GLY:O	2.35	0.41
1:E:1068:ASP:OD2	1:E:1156:LYS:NZ	2.34	0.41
1:E:1480:VAL:O	1:E:1492:GLY:N	2.42	0.41
1:F:149:ILE:HG13	1:F:151:ILE:HG12	2.01	0.41
1:F:1460:THR:HG23	1:F:1470:LEU:HD12	2.02	0.41
1:B:1070:THR:HG22	1:B:1154:ASN:HB3	2.02	0.41
1:C:1077:ASP:OD2	1:C:1210:TYR:OH	2.38	0.41
1:D:335:THR:HG22	1:D:339:LEU:HG	2.03	0.41
1:D:363:ILE:HD11	1:D:388:PHE:HB2	2.02	0.41
1:D:363:ILE:HD13	1:D:402:ILE:HG23	2.02	0.41
1:D:553:LEU:HB2	1:D:595:PHE:HE1	1.86	0.41
1:D:1092:GLN:NE2	1:D:1213:PRO:HB3	2.36	0.41
1:F:478:ILE:O	1:F:757:PHE:N	2.44	0.41
1:F:828:GLY:HA3	1:F:990:TYR:HE2	1.85	0.41
1:F:1100:VAL:HG22	1:F:1206:LEU:HD13	2.02	0.41
1:F:1436:GLU:OE1	1:F:1466:THR:HG22	2.20	0.41
1:A:305:ASN:HB3	1:A:310:PHE:CD2	2.56	0.41
1:A:586:ASN:HB3	1:A:591:PHE:CE1	2.56	0.41
1:A:721:ASP:OD1	1:A:721:ASP:N	2.53	0.41
1:A:773:ASP:OD2	1:A:775:GLY:N	2.43	0.41
1:A:793:GLU:O	1:A:795:LEU:N	2.54	0.41
1:A:1480:VAL:O	1:A:1492:GLY:N	2.43	0.41
1:B:279:HIS:CE1	1:B:425:SER:HB2	2.56	0.41
1:B:525:THR:HB	1:B:595:PHE:HB2	2.03	0.41
1:B:793:GLU:O	1:B:795:LEU:N	2.54	0.41
1:B:852:LEU:HD11	1:B:990:TYR:OH	2.20	0.41
1:B:1412:SER:HA	1:B:1417:ASP:HA	2.03	0.41
1:B:1460:THR:HG23	1:B:1470:LEU:HD12	2.02	0.41
1:C:1013:THR:HG22	1:C:1215:ASP:HB2	2.03	0.41
1:D:525:THR:HB	1:D:595:PHE:HB2	2.03	0.41
1:D:762:GLU:O	1:D:788:SER:HA	2.20	0.41

Continued on next page...

Continued from previous page...

Atom-1	Atom-2	Interatomic distance (Å)	Clash overlap (Å)
1:D:1013:THR:HG22	1:D:1215:ASP:HB2	2.03	0.41
1:D:1460:THR:HG23	1:D:1470:LEU:HD12	2.02	0.41
1:E:150:PRO:HB2	1:E:189:GLY:HA2	2.02	0.41
1:E:279:HIS:CE1	1:E:425:SER:HB2	2.56	0.41
1:E:586:ASN:HB3	1:E:591:PHE:CE1	2.56	0.41
1:E:825:SER:HB3	1:E:995:ASP:O	2.21	0.41
1:E:903:SER:OG	1:E:974:TYR:OH	2.29	0.41
1:E:1024:PRO:HB3	1:E:1257:ASP:HA	2.01	0.41
1:E:1092:GLN:NE2	1:E:1213:PRO:HB3	2.36	0.41
1:E:1255:GLU:HA	1:E:1256:PRO:HD3	1.89	0.41
1:F:141:THR:O	1:F:144:THR:HG22	2.21	0.41
1:F:579:LEU:HD22	1:F:718:ILE:HB	2.02	0.41
1:F:586:ASN:HB3	1:F:591:PHE:CE1	2.56	0.41
1:F:793:GLU:O	1:F:795:LEU:N	2.54	0.41
1:F:893:LEU:HD12	1:F:894:ASP:N	2.35	0.41
1:F:1070:THR:HG22	1:F:1154:ASN:HB3	2.02	0.41
1:B:263:ALA:HB1	1:B:443:TYR:HE2	1.86	0.41
1:B:1100:VAL:HG22	1:B:1206:LEU:HD13	2.02	0.41
1:B:1219:ASP:OD2	1:C:1422:LYS:NZ	2.35	0.41
1:B:1411:VAL:HG23	1:B:1480:VAL:HG22	2.03	0.41
1:C:87:VAL:HG12	1:C:143:GLU:HB2	2.03	0.41
1:C:762:GLU:O	1:C:788:SER:HA	2.20	0.41
1:C:828:GLY:HA3	1:C:990:TYR:HE2	1.85	0.41
1:D:225:TRP:CE3	1:D:226:PRO:HA	2.56	0.41
1:D:305:ASN:HB3	1:D:310:PHE:CD2	2.56	0.41
1:D:793:GLU:O	1:D:795:LEU:N	2.54	0.41
1:D:1335:ILE:HD13	1:D:1335:ILE:HA	1.93	0.41
1:D:1411:VAL:HG23	1:D:1480:VAL:HG22	2.03	0.41
1:E:438:SER:HB3	1:E:451:LEU:HD12	2.03	0.41
1:F:525:THR:HB	1:F:595:PHE:HB2	2.03	0.41
1:F:553:LEU:HB2	1:F:595:PHE:HE1	1.85	0.41
1:A:1426:THR:HG22	1:A:1432:ILE:O	2.22	0.40
1:C:216:ASN:HB3	1:C:223:PRO:HD2	2.02	0.40
1:C:793:GLU:O	1:C:795:LEU:N	2.54	0.40
1:D:1246:GLY:H	1:D:1319:ILE:HB	1.86	0.40
1:E:312:VAL:O	1:E:333:ARG:HD2	2.21	0.40
1:E:540:ILE:HD13	1:E:540:ILE:HA	1.84	0.40
1:E:1070:THR:HG22	1:E:1154:ASN:HB3	2.02	0.40
1:E:1246:GLY:H	1:E:1319:ILE:HB	1.86	0.40
1:E:1412:SER:HA	1:E:1417:ASP:HA	2.03	0.40
1:E:1460:THR:HG23	1:E:1470:LEU:HD12	2.02	0.40

Continued on next page...

Continued from previous page...

Atom-1	Atom-2	Interatomic distance (Å)	Clash overlap (Å)
1:F:731:GLY:HA2	1:F:736:GLU:HG3	2.03	0.40
1:A:579:LEU:HD22	1:A:718:ILE:HB	2.02	0.40
1:A:1246:GLY:H	1:A:1319:ILE:HB	1.86	0.40
1:A:1460:THR:HG23	1:A:1470:LEU:HD12	2.02	0.40
1:B:150:PRO:HB2	1:B:189:GLY:HA2	2.02	0.40
1:B:438:SER:HB3	1:B:451:LEU:HD12	2.03	0.40
1:B:553:LEU:HB2	1:B:595:PHE:HE1	1.86	0.40
1:B:1013:THR:HG22	1:B:1215:ASP:HB2	2.03	0.40
1:B:1202:GLN:NE2	1:B:1346:SER:O	2.54	0.40
1:C:731:GLY:HA2	1:C:736:GLU:HG3	2.03	0.40
1:D:731:GLY:HA2	1:D:736:GLU:HG3	2.03	0.40
1:D:1390:ASP:N	1:D:1390:ASP:OD1	2.54	0.40
1:E:579:LEU:HD22	1:E:718:ILE:HB	2.02	0.40
1:E:895:VAL:HG22	1:E:934:LEU:HD22	2.03	0.40
1:E:1219:ASP:OD2	1:F:1422:LYS:NZ	2.34	0.40
1:F:53:TYR:O	1:F:285:LEU:HD11	2.20	0.40
1:F:298:THR:HB	1:F:315:PHE:HB2	2.02	0.40
1:F:1092:GLN:NE2	1:F:1213:PRO:HB3	2.36	0.40
1:B:895:VAL:HG22	1:B:934:LEU:HD22	2.03	0.40
1:B:1246:GLY:H	1:B:1319:ILE:HB	1.86	0.40
1:B:1346:SER:OG	1:B:1348:TYR:O	2.38	0.40
1:C:825:SER:HB3	1:C:995:ASP:O	2.21	0.40
1:C:1411:VAL:HG23	1:C:1480:VAL:HG22	2.03	0.40
1:E:117:THR:HG23	1:E:120:SER:HB2	2.03	0.40
1:F:1412:SER:HA	1:F:1417:ASP:HA	2.03	0.40
1:A:81:VAL:HG13	1:A:88:LEU:HB3	2.04	0.40
1:A:343:ASP:HB2	1:A:445:GLU:CD	2.41	0.40
1:A:731:GLY:HA2	1:A:736:GLU:HG3	2.03	0.40
1:A:1070:THR:HG22	1:A:1154:ASN:HB3	2.02	0.40
1:B:350:ASP:HB3	1:B:440:SER:OG	2.21	0.40
1:B:1426:THR:HG22	1:B:1432:ILE:O	2.22	0.40
1:C:1092:GLN:NE2	1:C:1213:PRO:HB3	2.36	0.40
1:D:736:GLU:H	1:D:736:GLU:HG2	1.65	0.40
1:E:245:LYS:HE3	1:E:245:LYS:HB2	1.93	0.40
1:E:478:ILE:O	1:E:757:PHE:N	2.44	0.40
1:E:1273:ILE:HD12	1:E:1273:ILE:HA	1.85	0.40
1:F:702:PHE:CZ	1:F:722:PHE:HE2	2.40	0.40
1:A:442:ASP:HB2	1:A:447:PRO:HB3	2.03	0.40
1:A:1346:SER:OG	1:A:1348:TYR:O	2.38	0.40
1:A:1411:VAL:HG23	1:A:1480:VAL:HG22	2.03	0.40
1:C:625:PHE:CE1	1:C:627:TYR:HB3	2.50	0.40

Continued on next page...

Continued from previous page...

Atom-1	Atom-2	Interatomic distance (Å)	Clash overlap (Å)
1:C:1411:VAL:CG1	1:C:1418:LEU:HB2	2.52	0.40
1:C:1421:TYR:CZ	1:C:1437:VAL:HG22	2.57	0.40
1:D:216:ASN:HB3	1:D:223:PRO:HD2	2.02	0.40
1:D:934:LEU:HD12	1:D:934:LEU:HA	1.92	0.40
1:E:525:THR:HB	1:E:595:PHE:HB2	2.03	0.40
1:E:793:GLU:O	1:E:795:LEU:N	2.54	0.40
1:E:995:ASP:OD2	1:E:995:ASP:C	2.60	0.40
1:F:825:SER:HB3	1:F:995:ASP:O	2.21	0.40
1:F:995:ASP:OD2	1:F:995:ASP:C	2.60	0.40

There are no symmetry-related clashes.

5.3 Torsion angles [i](#)

5.3.1 Protein backbone [i](#)

In the following table, the Percentiles column shows the percent Ramachandran outliers of the chain as a percentile score with respect to all PDB entries followed by that with respect to all EM entries.

The Analysed column shows the number of residues for which the backbone conformation was analysed, and the total number of residues.

Mol	Chain	Analysed	Favoured	Allowed	Outliers	Percentiles	
1	A	1460/1734 (84%)	1418 (97%)	42 (3%)	0	100	100
1	B	1460/1734 (84%)	1415 (97%)	45 (3%)	0	100	100
1	C	1460/1734 (84%)	1414 (97%)	46 (3%)	0	100	100
1	D	1460/1734 (84%)	1421 (97%)	39 (3%)	0	100	100
1	E	1460/1734 (84%)	1414 (97%)	46 (3%)	0	100	100
1	F	1460/1734 (84%)	1412 (97%)	48 (3%)	0	100	100
All	All	8760/10404 (84%)	8494 (97%)	266 (3%)	0	100	100

There are no Ramachandran outliers to report.

5.3.2 Protein sidechains [i](#)

In the following table, the Percentiles column shows the percent sidechain outliers of the chain as a percentile score with respect to all PDB entries followed by that with respect to all EM entries.

The Analysed column shows the number of residues for which the sidechain conformation was analysed, and the total number of residues.

Mol	Chain	Analysed	Rotameric	Outliers	Percentiles	
1	A	1212/1438 (84%)	1191 (98%)	21 (2%)	60	82
1	B	1212/1438 (84%)	1191 (98%)	21 (2%)	60	82
1	C	1212/1438 (84%)	1190 (98%)	22 (2%)	59	81
1	D	1212/1438 (84%)	1191 (98%)	21 (2%)	60	82
1	E	1212/1438 (84%)	1191 (98%)	21 (2%)	60	82
1	F	1212/1438 (84%)	1191 (98%)	21 (2%)	60	82
All	All	7272/8628 (84%)	7145 (98%)	127 (2%)	62	82

All (127) residues with a non-rotameric sidechain are listed below:

Mol	Chain	Res	Type
1	A	507	ARG
1	A	591	PHE
1	A	649	LEU
1	A	661	LYS
1	A	721	ASP
1	A	857	ASP
1	A	874	ASP
1	A	918	ASP
1	A	995	ASP
1	A	1068	ASP
1	A	1152	ASP
1	A	1170	ASP
1	A	1219	ASP
1	A	1232	ARG
1	A	1278	ASP
1	A	1296	PHE
1	A	1308	ASP
1	A	1330	ARG
1	A	1338	TYR
1	A	1347	ASP
1	A	1378	TRP
1	B	507	ARG
1	B	591	PHE
1	B	649	LEU
1	B	661	LYS
1	B	721	ASP
1	B	857	ASP

Continued on next page...

Continued from previous page...

Mol	Chain	Res	Type
1	B	874	ASP
1	B	918	ASP
1	B	995	ASP
1	B	1068	ASP
1	B	1152	ASP
1	B	1170	ASP
1	B	1219	ASP
1	B	1232	ARG
1	B	1278	ASP
1	B	1296	PHE
1	B	1308	ASP
1	B	1330	ARG
1	B	1338	TYR
1	B	1347	ASP
1	B	1378	TRP
1	C	455	SER
1	C	507	ARG
1	C	591	PHE
1	C	649	LEU
1	C	661	LYS
1	C	721	ASP
1	C	857	ASP
1	C	874	ASP
1	C	918	ASP
1	C	995	ASP
1	C	1068	ASP
1	C	1152	ASP
1	C	1170	ASP
1	C	1219	ASP
1	C	1232	ARG
1	C	1278	ASP
1	C	1296	PHE
1	C	1308	ASP
1	C	1330	ARG
1	C	1338	TYR
1	C	1347	ASP
1	C	1378	TRP
1	D	507	ARG
1	D	591	PHE
1	D	649	LEU
1	D	661	LYS
1	D	721	ASP

Continued on next page...

Continued from previous page...

Mol	Chain	Res	Type
1	D	857	ASP
1	D	874	ASP
1	D	918	ASP
1	D	995	ASP
1	D	1068	ASP
1	D	1152	ASP
1	D	1170	ASP
1	D	1219	ASP
1	D	1232	ARG
1	D	1278	ASP
1	D	1296	PHE
1	D	1308	ASP
1	D	1330	ARG
1	D	1338	TYR
1	D	1347	ASP
1	D	1378	TRP
1	E	507	ARG
1	E	591	PHE
1	E	649	LEU
1	E	661	LYS
1	E	721	ASP
1	E	857	ASP
1	E	874	ASP
1	E	918	ASP
1	E	995	ASP
1	E	1068	ASP
1	E	1152	ASP
1	E	1170	ASP
1	E	1219	ASP
1	E	1232	ARG
1	E	1278	ASP
1	E	1296	PHE
1	E	1308	ASP
1	E	1330	ARG
1	E	1338	TYR
1	E	1347	ASP
1	E	1378	TRP
1	F	507	ARG
1	F	591	PHE
1	F	649	LEU
1	F	661	LYS
1	F	721	ASP

Continued on next page...

Continued from previous page...

Mol	Chain	Res	Type
1	F	857	ASP
1	F	874	ASP
1	F	918	ASP
1	F	995	ASP
1	F	1068	ASP
1	F	1152	ASP
1	F	1170	ASP
1	F	1219	ASP
1	F	1232	ARG
1	F	1278	ASP
1	F	1296	PHE
1	F	1308	ASP
1	F	1330	ARG
1	F	1338	TYR
1	F	1347	ASP
1	F	1378	TRP

Sometimes sidechains can be flipped to improve hydrogen bonding and reduce clashes. All (18) such sidechains are listed below:

Mol	Chain	Res	Type
1	A	373	GLN
1	A	806	ASN
1	A	1050	HIS
1	B	806	ASN
1	B	1050	HIS
1	C	279	HIS
1	C	366	ASN
1	C	806	ASN
1	C	1050	HIS
1	D	806	ASN
1	D	1050	HIS
1	E	277	GLN
1	E	806	ASN
1	E	1050	HIS
1	F	242	GLN
1	F	279	HIS
1	F	806	ASN
1	F	1050	HIS

5.3.3 RNA [i](#)

There are no RNA molecules in this entry.

5.4 Non-standard residues in protein, DNA, RNA chains [i](#)

There are no non-standard protein/DNA/RNA residues in this entry.

5.5 Carbohydrates [i](#)

There are no monosaccharides in this entry.

5.6 Ligand geometry [i](#)

There are no ligands in this entry.

5.7 Other polymers [i](#)

There are no such residues in this entry.

5.8 Polymer linkage issues [i](#)

There are no chain breaks in this entry.

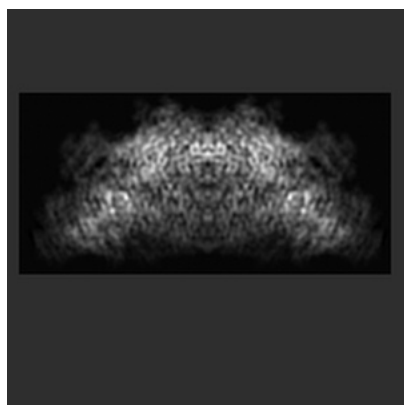
6 Map visualisation [i](#)

This section contains visualisations of the EMDB entry EMD-16492. These allow visual inspection of the internal detail of the map and identification of artifacts.

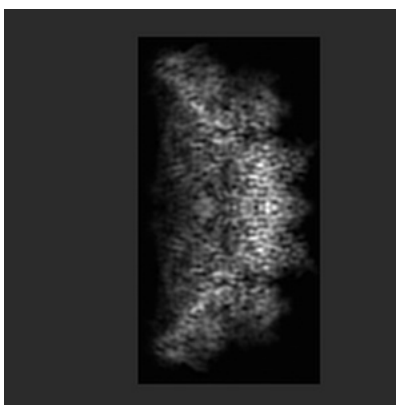
No raw map or half-maps were deposited for this entry and therefore no images, graphs, etc. pertaining to the raw map can be shown.

6.1 Orthogonal projections [i](#)

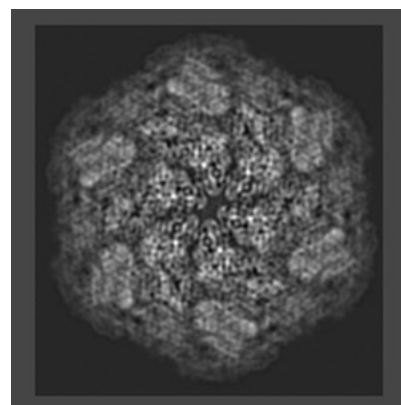
6.1.1 Primary map



X



Y

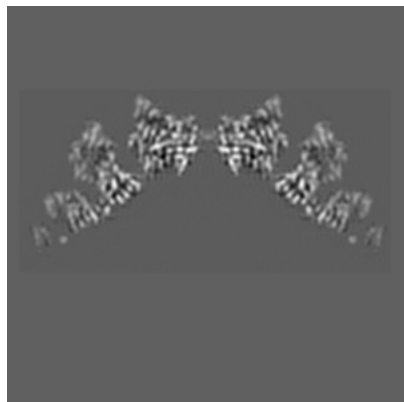


Z

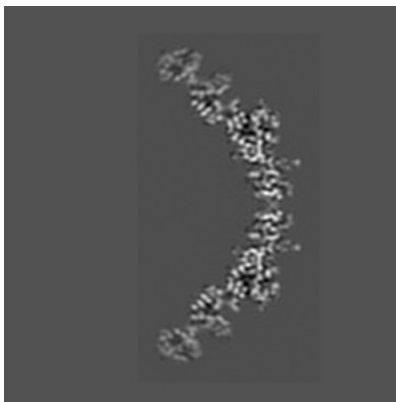
The images above show the map projected in three orthogonal directions.

6.2 Central slices [i](#)

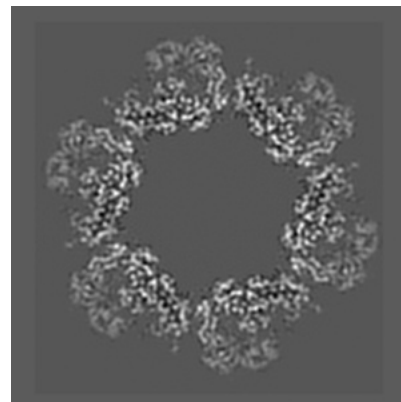
6.2.1 Primary map



X Index: 100



Y Index: 100

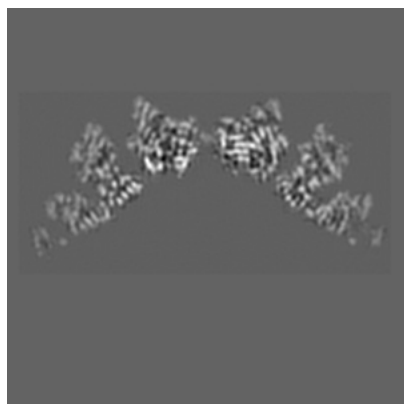


Z Index: 100

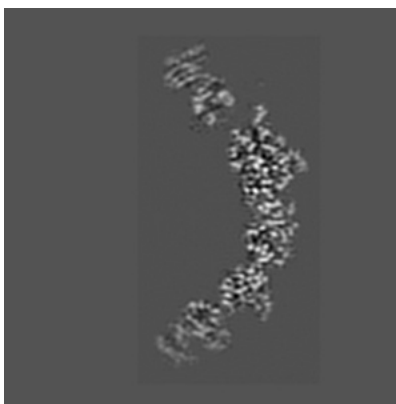
The images above show central slices of the map in three orthogonal directions.

6.3 Largest variance slices [i](#)

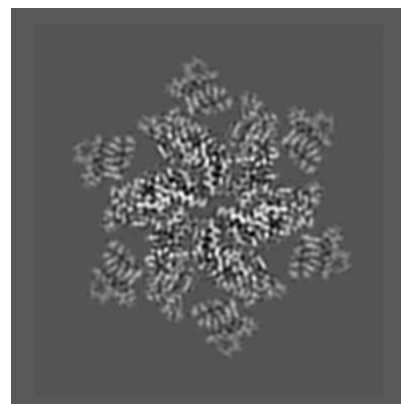
6.3.1 Primary map



X Index: 99



Y Index: 92

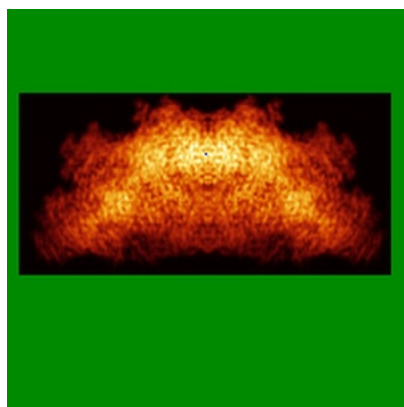


Z Index: 127

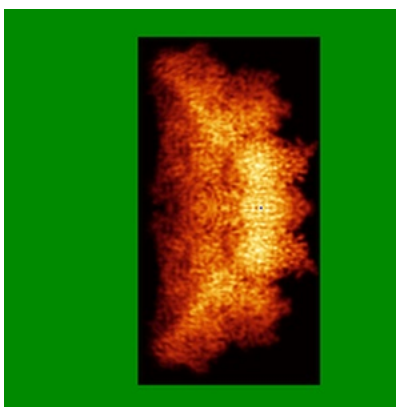
The images above show the largest variance slices of the map in three orthogonal directions.

6.4 Orthogonal standard-deviation projections (False-color) [i](#)

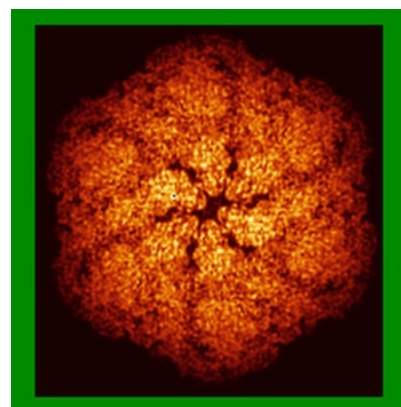
6.4.1 Primary map



X



Y

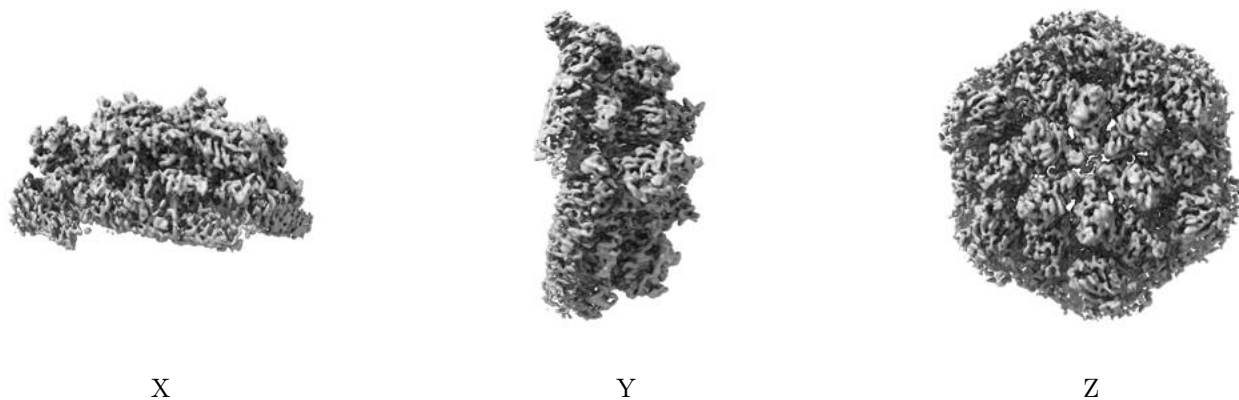


Z

The images above show the map standard deviation projections with false color in three orthogonal directions. Minimum values are shown in green, max in blue, and dark to light orange shades represent small to large values respectively.

6.5 Orthogonal surface views [i](#)

6.5.1 Primary map



The images above show the 3D surface view of the map at the recommended contour level 1.45621. These images, in conjunction with the slice images, may facilitate assessment of whether an appropriate contour level has been provided.

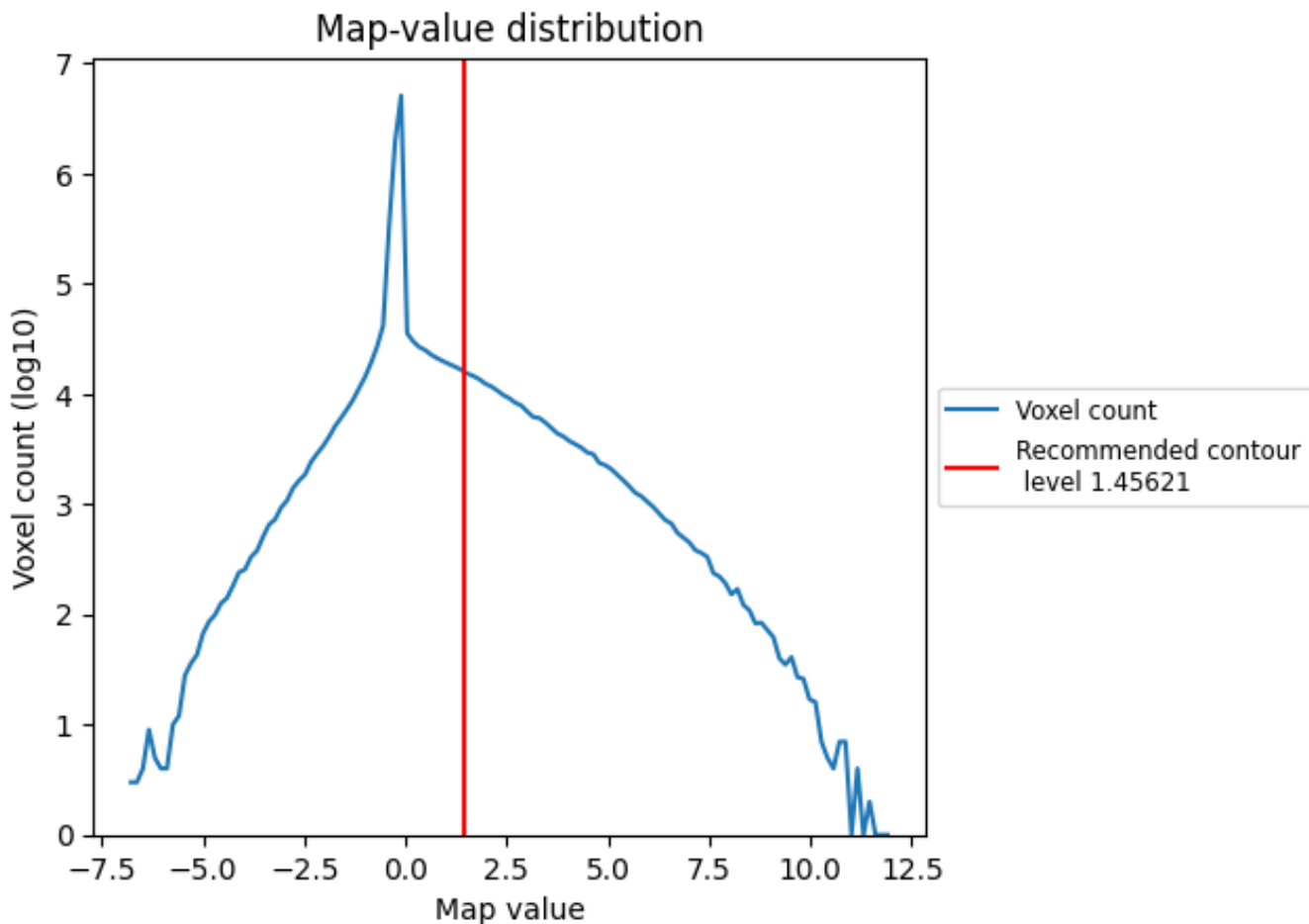
6.6 Mask visualisation [i](#)

This section was not generated. No masks/segmentation were deposited.

7 Map analysis [i](#)

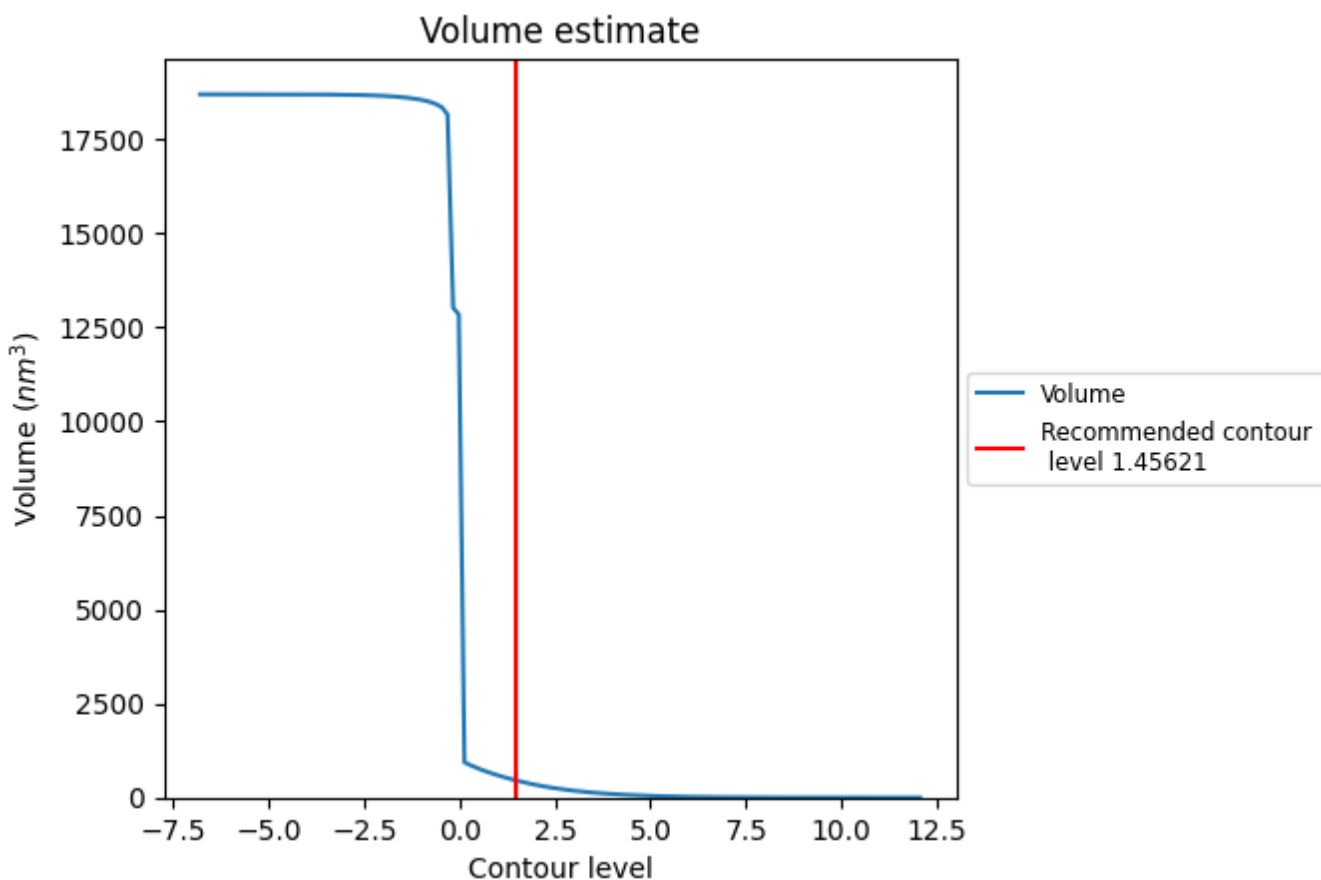
This section contains the results of statistical analysis of the map.

7.1 Map-value distribution [i](#)



The map-value distribution is plotted in 128 intervals along the x-axis. The y-axis is logarithmic. A spike in this graph at zero usually indicates that the volume has been masked.

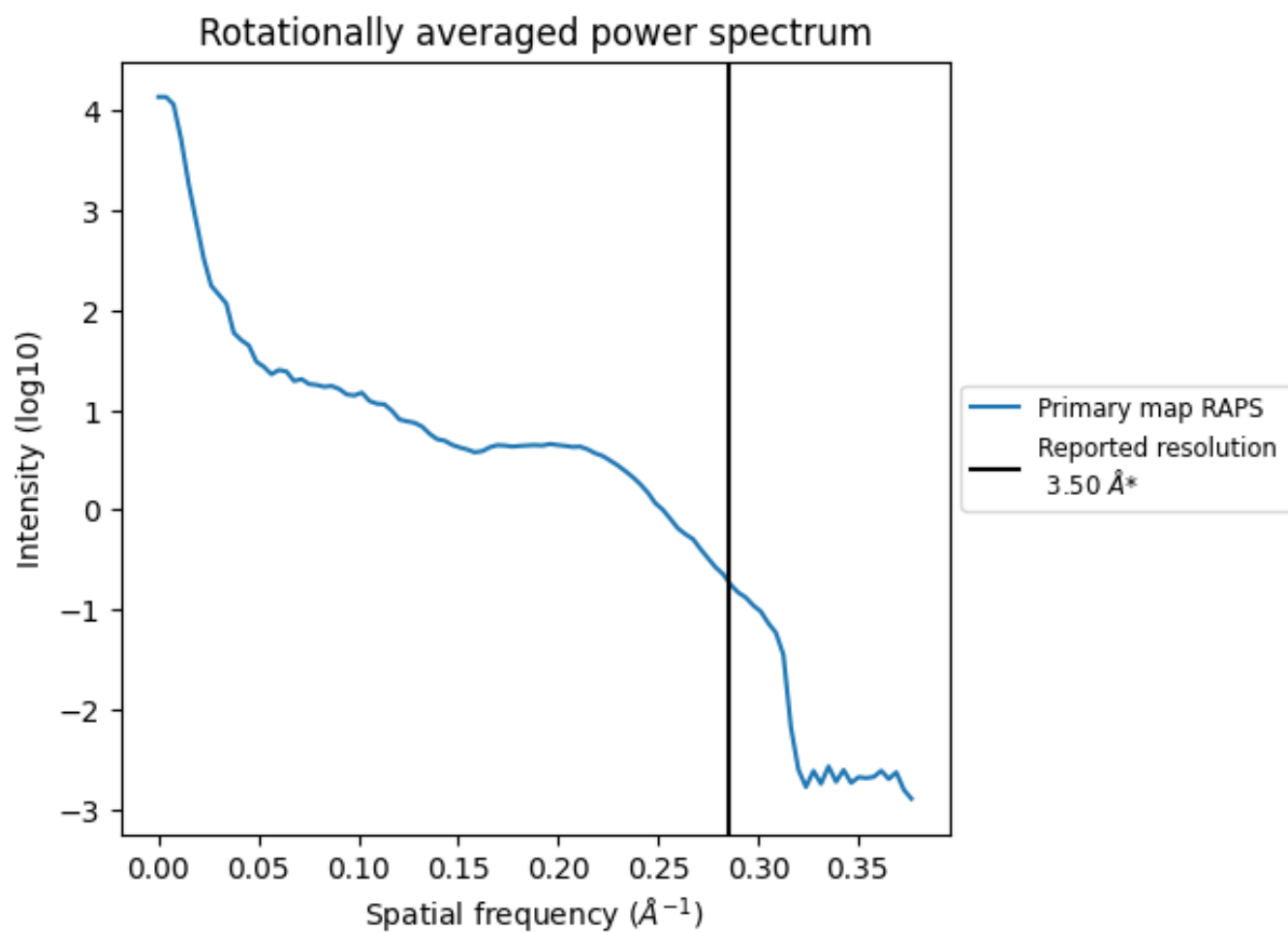
7.2 Volume estimate [i](#)



The volume at the recommended contour level is 462 nm³; this corresponds to an approximate mass of 417 kDa.

The volume estimate graph shows how the enclosed volume varies with the contour level. The recommended contour level is shown as a vertical line and the intersection between the line and the curve gives the volume of the enclosed surface at the given level.

7.3 Rotationally averaged power spectrum [\(i\)](#)



*Reported resolution corresponds to spatial frequency of 0.286\AA^{-1}

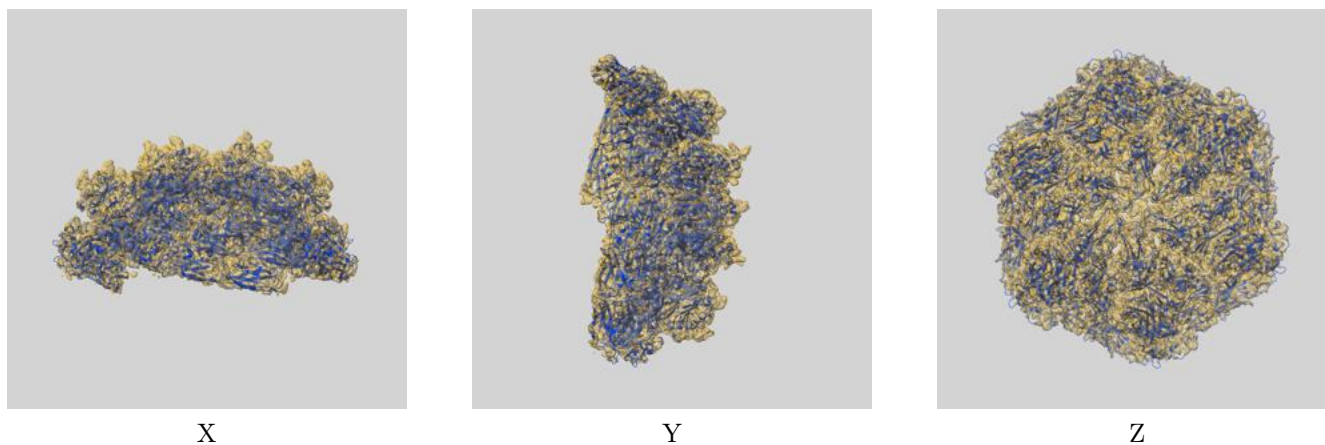
8 Fourier-Shell correlation

This section was not generated. No FSC curve or half-maps provided.

9 Map-model fit [i](#)

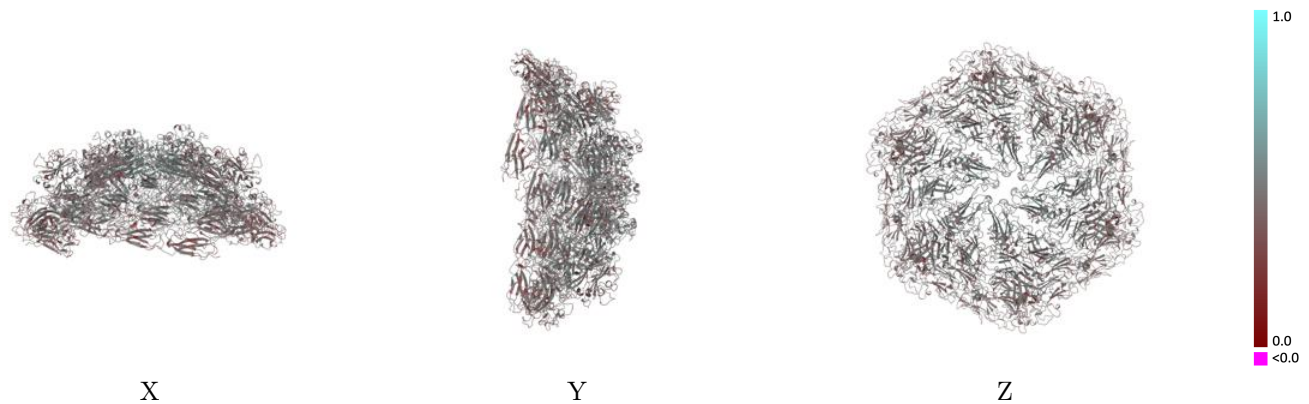
This section contains information regarding the fit between EMDB map EMD-16492 and PDB model 8C8R. Per-residue inclusion information can be found in section 3 on page 4.

9.1 Map-model overlay [i](#)



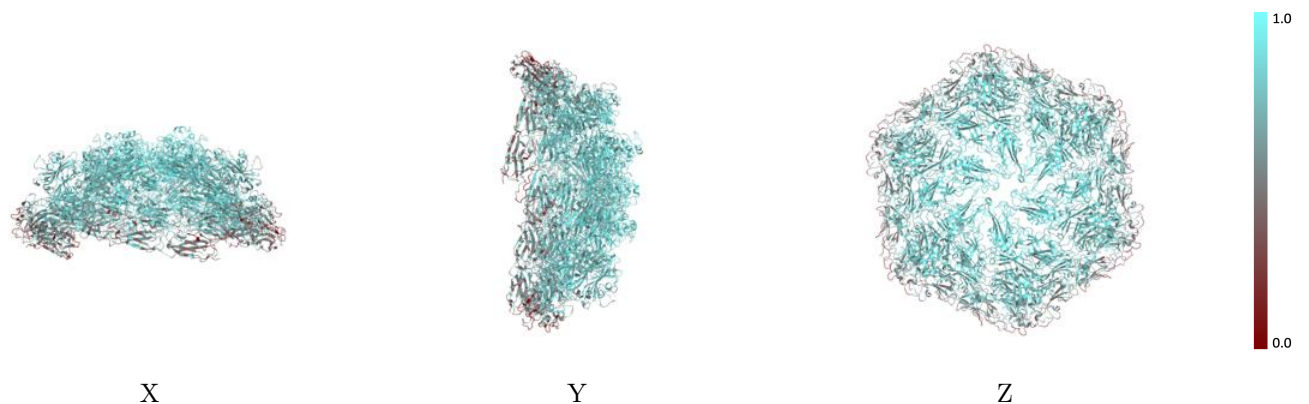
The images above show the 3D surface view of the map at the recommended contour level 1.45621 at 50% transparency in yellow overlaid with a ribbon representation of the model coloured in blue. These images allow for the visual assessment of the quality of fit between the atomic model and the map.

9.2 Q-score mapped to coordinate model [i](#)



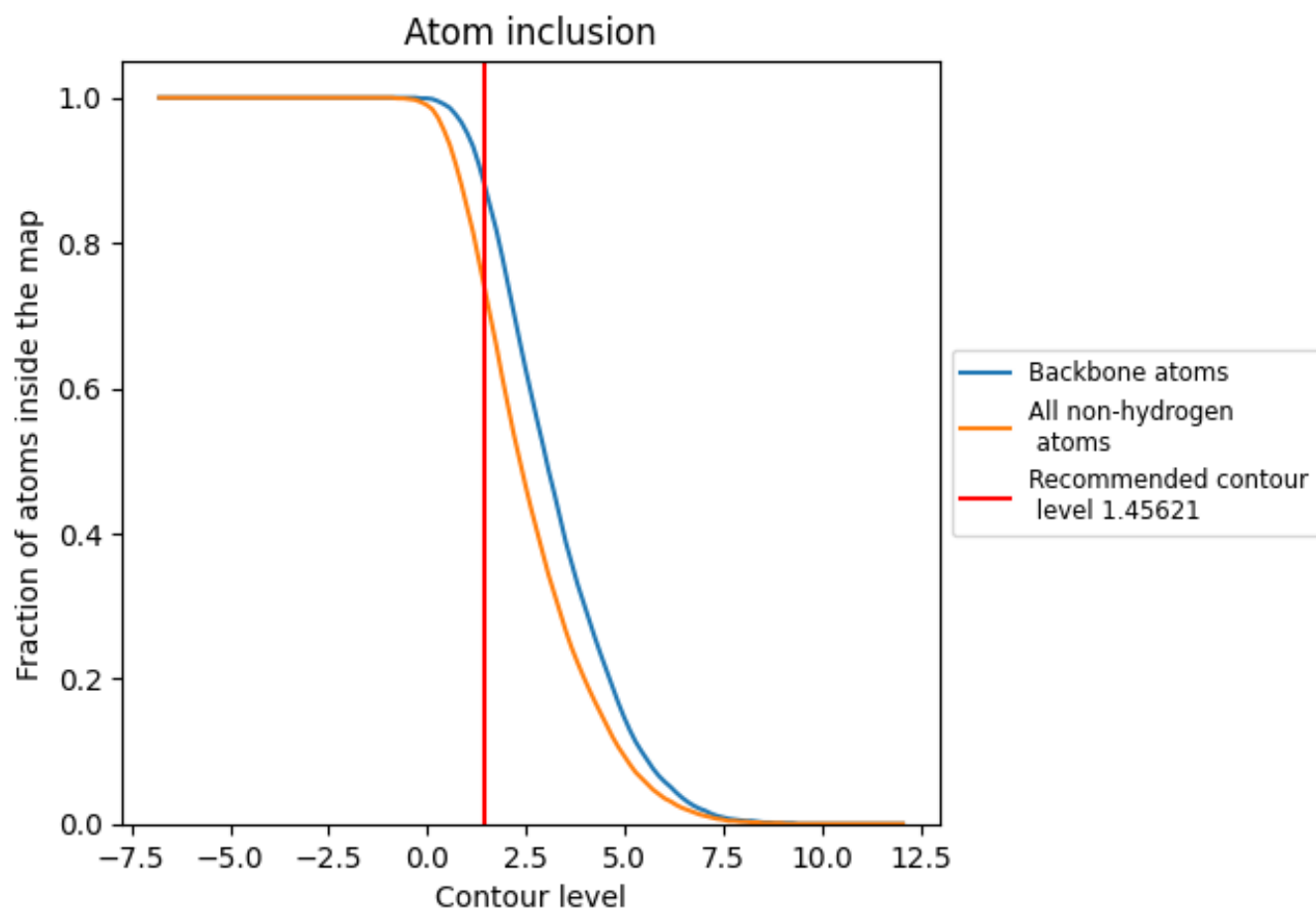
The images above show the model with each residue coloured according to its Q-score. This shows their resolvability in the map with higher Q-score values reflecting better resolvability. Please note: Q-score is calculating the resolvability of atoms, and thus high values are only expected at resolutions at which atoms can be resolved. Low Q-score values may therefore be expected for many entries.

9.3 Atom inclusion mapped to coordinate model [i](#)



The images above show the model with each residue coloured according to its atom inclusion. This shows to what extent they are inside the map at the recommended contour level (1.45621).















9.4 Atom inclusion [i](#)



At the recommended contour level, 88% of all backbone atoms, 74% of all non-hydrogen atoms, are inside the map.

9.5 Map-model fit summary

The table lists the average atom inclusion at the recommended contour level (1.45621) and Q-score for the entire model and for each chain.

Chain	Atom inclusion	Q-score
All	 0.7360	 0.4380
A	 0.7430	 0.4440
B	 0.7370	 0.4350
C	 0.7300	 0.4350
D	 0.7430	 0.4440
E	 0.7340	 0.4360
F	 0.7290	 0.4350

