



# Full wwPDB X-ray Structure Validation Report ⓘ

Jul 29, 2024 – 03:13 PM EDT

PDB ID : 9CBT  
Title : Crystal structure of human sirtuin 3 fragment (residues 118-399) bound to intermediates from reaction with NAD and inhibitor NH6-10  
Authors : Fenwick, M.K.; Young, H.J.; Lin, H.  
Deposited on : 2024-06-20  
Resolution : 1.95 Å(reported)

This is a Full wwPDB X-ray Structure Validation Report for a publicly released PDB entry.

We welcome your comments at [validation@mail.wwpdb.org](mailto:validation@mail.wwpdb.org)

A user guide is available at

<https://www.wwpdb.org/validation/2017/XrayValidationReportHelp>

with specific help available everywhere you see the ⓘ symbol.

The types of validation reports are described at

<http://www.wwpdb.org/validation/2017/FAQs#types>.

---

The following versions of software and data (see [references ⓘ](#)) were used in the production of this report:

MolProbity : 4.02b-467  
Mogul : 1.8.5 (274361), CSD as541be (2020)  
Xtriage (Phenix) : 1.13  
EDS : 2.37.1  
buster-report : 1.1.7 (2018)  
Percentile statistics : 20191225.v01 (using entries in the PDB archive December 25th 2019)  
Refmac : 5.8.0158  
CCP4 : 7.0.044 (Gargrove)  
Ideal geometry (proteins) : Engh & Huber (2001)  
Ideal geometry (DNA, RNA) : Parkinson et al. (1996)  
Validation Pipeline (wwPDB-VP) : 2.37.1

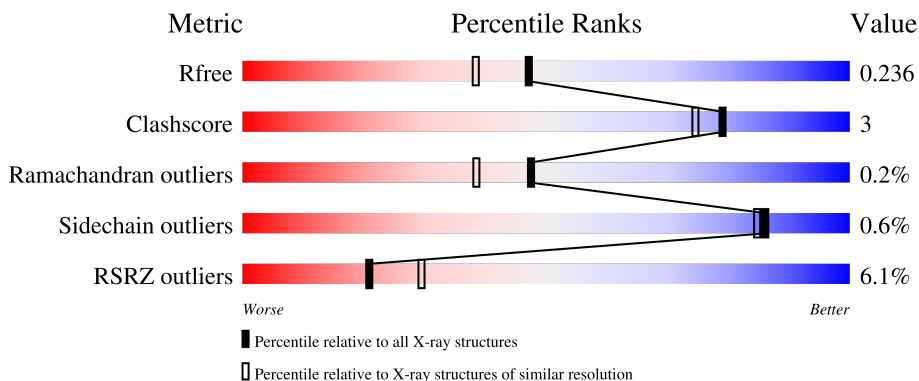
# 1 Overall quality at a glance

The following experimental techniques were used to determine the structure:

*X-RAY DIFFRACTION*

The reported resolution of this entry is 1.95 Å.

Percentile scores (ranging between 0-100) for global validation metrics of the entry are shown in the following graphic. The table shows the number of entries on which the scores are based.



Metric	Whole archive (#Entries)	Similar resolution (#Entries, resolution range(Å))
$R_{free}$	130704	2580 (1.96-1.96)
Clashscore	141614	2705 (1.96-1.96)
Ramachandran outliers	138981	2678 (1.96-1.96)
Sidechain outliers	138945	2678 (1.96-1.96)
RSRZ outliers	127900	2539 (1.96-1.96)

The table below summarises the geometric issues observed across the polymeric chains and their fit to the electron density. The red, orange, yellow and green segments of the lower bar indicate the fraction of residues that contain outliers for  $\geq 3$ , 2, 1 and 0 types of geometric quality criteria respectively. A grey segment represents the fraction of residues that are not modelled. The numeric value for each fraction is indicated below the corresponding segment, with a dot representing fractions  $\leq 5\%$ . The upper red bar (where present) indicates the fraction of residues that have poor fit to the electron density. The numeric value is given above the bar.

Mol	Chain	Length	Quality of chain
1	A	282	
1	B	282	

## 2 Entry composition [i](#)

There are 6 unique types of molecules in this entry. The entry contains 4855 atoms, of which 0 are hydrogens and 0 are deuteriums.

In the tables below, the ZeroOcc column contains the number of atoms modelled with zero occupancy, the AltConf column contains the number of residues with at least one atom in alternate conformation and the Trace column contains the number of residues modelled with at most 2 atoms.

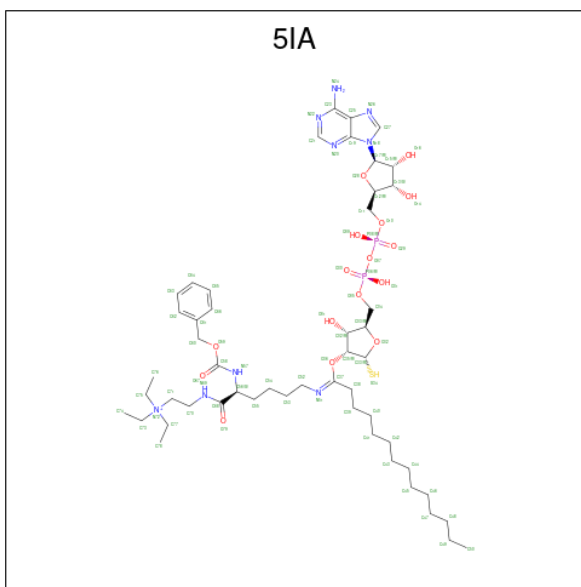
- Molecule 1 is a protein called NAD-dependent protein deacetylase sirtuin-3, mitochondrial.

Mol	Chain	Residues	Atoms					ZeroOcc	AltConf	Trace
			Total	C	N	O	S			
1	A	270	2113	1362	362	380	9	0	3	0
1	B	274	2211	1423	383	396	9	0	10	0

- Molecule 2 is ZINC ION (three-letter code: ZN) (formula: Zn) (labeled as "Ligand of Interest" by depositor).

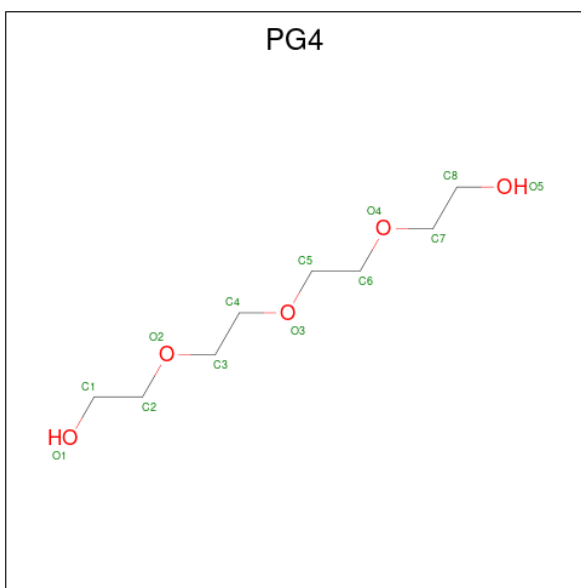
Mol	Chain	Residues	Atoms		ZeroOcc	AltConf
2	A	1	Total	Zn	0	0
			1	1		
2	B	1	Total	Zn	0	0
			1	1		

- Molecule 3 is 2-{{(2S)-6-[(Z)-(1-{{(2R,3R,4R,5R)-5-({[(R)-{{[(R)-{{(2R,3S,4R,5R)-5-(6-amin o-9H-purin-9-yl)-3,4-dihydroxyoxolan-2-yl]methoxy}(hydroxy)phosphoryl]oxy}(hydroxy)p hosphoryl]oxy}methyl)-4-hydroxy-2-sulfanyloxolan-3-yl]oxy}tetradecylidene)amino]-2-{{(b enzyloxy)carbonyl]amino}hexanoyl]amino}-N,N,N-triethylethan-1-aminium (non-preferred name) (three-letter code: 5IA) (formula: C<sub>51</sub>H<sub>86</sub>N<sub>9</sub>O<sub>16</sub>P<sub>2</sub>S) (labeled as "Ligand of Interest" by depositor).



Mol	Chain	Residues	Atoms					ZeroOcc	AltConf	
			Total	C	N	O	P			S
3	A	1	79	51	9	16	2	1	0	0

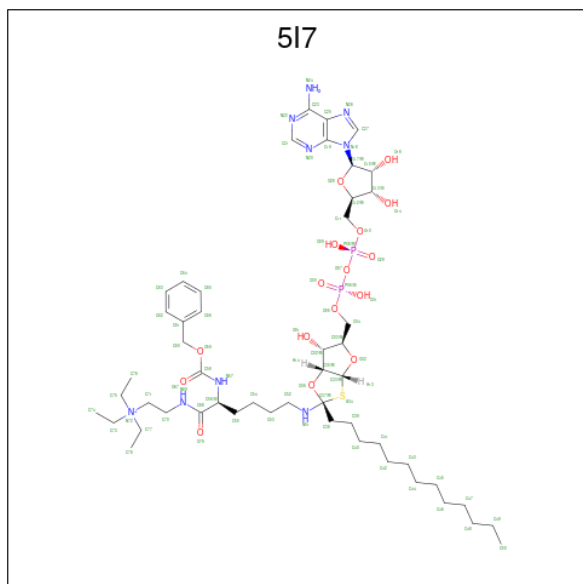
- Molecule 4 is TETRAETHYLENE GLYCOL (three-letter code: PG4) (formula: C<sub>8</sub>H<sub>18</sub>O<sub>5</sub>).



Mol	Chain	Residues	Atoms			ZeroOcc	AltConf
			Total	C	O		
4	B	1	13	8	5	0	0

- Molecule 5 is (phenylmethyl) {N}-[(2 {S})-6-[(2 {R},3 {a} {R},5 {R},6 {R},6 {a} {R})-5-[[[(2 {R},3 {S},4 {R},5 {R})-5-(6-aminopurin-9-yl)-3,4-bis(oxidanyl)oxolan-2-yl]methoxy-oxidanyl-phosphoryl]oxy-oxidanyl-phosphoryl]oxymethyl]-6-oxidanyl-2-tridecyl-3 {a},5,6,6

{a}-tetrahydrofuro[2,3-d][1,3]oxathiol-2-yl]amino]-1-oxidanylidene-1-[2-(triethyl- $\text{S}^{\text{I}}\{4\}$ -azanyl)ethylamino]hexan-2-yl]carbamate (three-letter code: 5I7) (formula:  $\text{C}_{51}\text{H}_{86}\text{N}_9\text{O}_{16}\text{P}_2\text{S}$ ) (labeled as "Ligand of Interest" by depositor).



Mol	Chain	Residues	Atoms					ZeroOcc	AltConf	
			Total	C	N	O	P			S
5	B	1	79	51	9	16	2	1	0	0

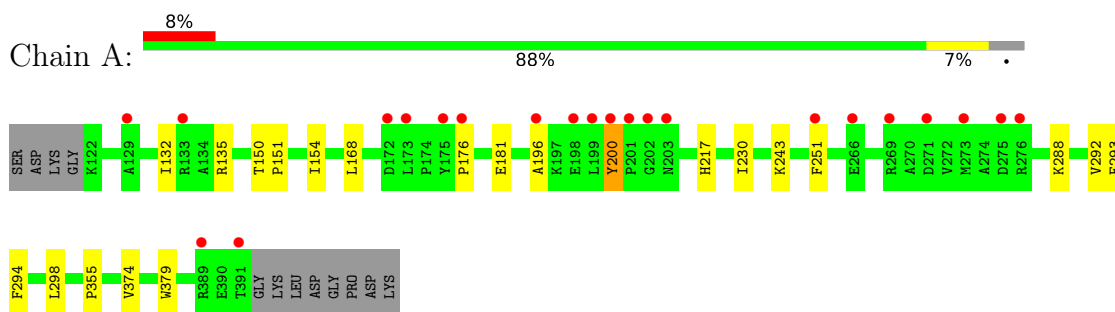
- Molecule 6 is water.

Mol	Chain	Residues	Atoms		ZeroOcc	AltConf
6	A	128	Total	O	0	1
			128	128		
6	B	230	Total	O	0	14
			230	230		

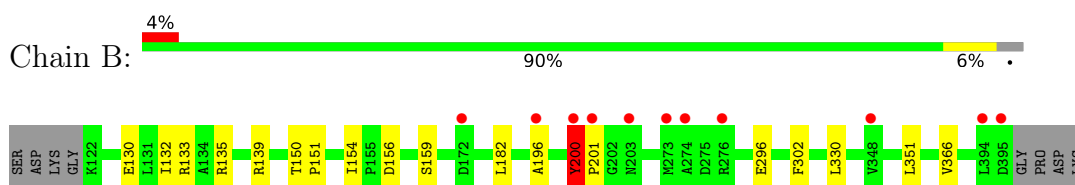
### 3 Residue-property plots [i](#)

These plots are drawn for all protein, RNA, DNA and oligosaccharide chains in the entry. The first graphic for a chain summarises the proportions of the various outlier classes displayed in the second graphic. The second graphic shows the sequence view annotated by issues in geometry and electron density. Residues are color-coded according to the number of geometric quality criteria for which they contain at least one outlier: green = 0, yellow = 1, orange = 2 and red = 3 or more. A red dot above a residue indicates a poor fit to the electron density ( $RSRZ > 2$ ). Stretches of 2 or more consecutive residues without any outlier are shown as a green connector. Residues present in the sample, but not in the model, are shown in grey.

- Molecule 1: NAD-dependent protein deacetylase sirtuin-3, mitochondrial



- Molecule 1: NAD-dependent protein deacetylase sirtuin-3, mitochondrial



## 4 Data and refinement statistics

Property	Value	Source
Space group	P 1 21 1	Depositor
Cell constants a, b, c, $\alpha$ , $\beta$ , $\gamma$	39.43Å 63.19Å 114.61Å 90.00° 90.79° 90.00°	Depositor
Resolution (Å)	39.43 – 1.95 39.43 – 1.95	Depositor EDS
% Data completeness (in resolution range)	97.2 (39.43-1.95) 97.2 (39.43-1.95)	Depositor EDS
$R_{merge}$	0.10	Depositor
$R_{sym}$	(Not available)	Depositor
$\langle I/\sigma(I) \rangle$ <sup>1</sup>	1.51 (at 1.95Å)	Xtrriage
Refinement program	PHENIX 1.19.1_4122	Depositor
R, $R_{free}$	0.198 , 0.239 0.195 , 0.236	Depositor DCC
$R_{free}$ test set	2047 reflections (5.11%)	wwPDB-VP
Wilson B-factor (Å <sup>2</sup> )	33.7	Xtrriage
Anisotropy	0.524	Xtrriage
Bulk solvent $k_{sol}$ (e/Å <sup>3</sup> ), $B_{sol}$ (Å <sup>2</sup> )	0.33 , 50.1	EDS
L-test for twinning <sup>2</sup>	$\langle  L  \rangle = 0.48$ , $\langle L^2 \rangle = 0.31$	Xtrriage
Estimated twinning fraction	0.077 for h,-k,-l	Xtrriage
$F_o, F_c$ correlation	0.96	EDS
Total number of atoms	4855	wwPDB-VP
Average B, all atoms (Å <sup>2</sup> )	47.0	wwPDB-VP

Xtrriage's analysis on translational NCS is as follows: *The largest off-origin peak in the Patterson function is 5.77% of the height of the origin peak. No significant pseudotranslation is detected.*

<sup>1</sup>Intensities estimated from amplitudes.

<sup>2</sup>Theoretical values of  $\langle |L| \rangle$ ,  $\langle L^2 \rangle$  for acentric reflections are 0.5, 0.333 respectively for untwinned datasets, and 0.375, 0.2 for perfectly twinned datasets.

## 5 Model quality

### 5.1 Standard geometry

Bond lengths and bond angles in the following residue types are not validated in this section: 5IA, PG4, 5I7, ZN

The Z score for a bond length (or angle) is the number of standard deviations the observed value is removed from the expected value. A bond length (or angle) with  $|Z| > 5$  is considered an outlier worth inspection. RMSZ is the root-mean-square of all Z scores of the bond lengths (or angles).

Mol	Chain	Bond lengths		Bond angles	
		RMSZ	# Z  >5	RMSZ	# Z  >5
1	A	0.27	0/2168	0.52	0/2960
1	B	0.27	0/2267	0.53	0/3089
All	All	0.27	0/4435	0.52	0/6049

There are no bond length outliers.

There are no bond angle outliers.

There are no chirality outliers.

There are no planarity outliers.

### 5.2 Too-close contacts

In the following table, the Non-H and H(model) columns list the number of non-hydrogen atoms and hydrogen atoms in the chain respectively. The H(added) column lists the number of hydrogen atoms added and optimized by MolProbity. The Clashes column lists the number of clashes within the asymmetric unit, whereas Symm-Clashes lists symmetry-related clashes.

Mol	Chain	Non-H	H(model)	H(added)	Clashes	Symm-Clashes
1	A	2113	0	2094	13	0
1	B	2211	0	2224	11	0
2	A	1	0	0	0	0
2	B	1	0	0	0	0
3	A	79	0	0	1	0
4	B	13	0	18	0	0
5	B	79	0	0	1	0
6	A	128	0	0	1	0
6	B	230	0	0	1	0
All	All	4855	0	4336	25	0

The all-atom clashscore is defined as the number of clashes found per 1000 atoms (including



hydrogen atoms). The all-atom clashscore for this structure is 3.

All (25) close contacts within the same asymmetric unit are listed below, sorted by their clash magnitude.

Atom-1	Atom-2	Interatomic distance (Å)	Clash overlap (Å)
1:B:130:GLU:OE1	1:B:133:ARG:NH1	2.38	0.56
1:A:230:ILE:HD13	1:A:251:PHE:HE2	1.71	0.55
1:A:181:GLU:HA	1:A:294:PHE:HB2	1.90	0.54
1:A:292:VAL:HG11	1:A:298:LEU:HD23	1.89	0.53
1:B:132:ILE:O	1:B:135:ARG:NH1	2.38	0.52
3:A:402:5IA:S34	3:A:402:5IA:C37	2.97	0.52
1:B:156:ASP:OD2	1:B:159:SER:OG	2.25	0.52
1:A:168:LEU:HD12	1:A:176:PRO:HB3	1.93	0.50
1:A:132:ILE:O	1:A:135:ARG:NH1	2.44	0.50
1:A:288:LYS:HD2	1:A:293:PHE:CE2	2.48	0.48
1:B:200:TYR:H	1:B:201:PRO:CD	2.27	0.47
1:A:374:VAL:HG13	1:A:379:TRP:HB2	1.97	0.47
1:B:366:VAL:HG22	5:B:403:5I7:N22	2.30	0.47
1:A:196:ALA:O	1:A:200:TYR:HB2	2.15	0.46
1:A:217:HIS:CD2	1:A:243:LYS:HG3	2.50	0.45
1:B:150:THR:HA	1:B:154:ILE:O	2.17	0.45
1:B:150:THR:OG1	1:B:151:PRO:HD3	2.17	0.44
1:A:355:PRO:HD2	6:A:570:HOH:O	2.18	0.44
1:B:182:LEU:HD22	1:B:296:GLU:HB2	2.01	0.43
1:A:217:HIS:HD2	1:A:243:LYS:HG3	1.85	0.42
1:B:196:ALA:O	1:B:200:TYR:HB2	2.19	0.42
1:A:150:THR:OG1	1:A:151:PRO:HD3	2.20	0.41
1:B:302:PHE:CZ	1:B:330:LEU:HD11	2.56	0.41
1:A:150:THR:HA	1:A:154:ILE:O	2.21	0.41
1:B:139:ARG:NH2	6:B:523:HOH:O	2.53	0.40

There are no symmetry-related clashes.

## 5.3 Torsion angles [i](#)

### 5.3.1 Protein backbone [i](#)

In the following table, the Percentiles column shows the percent Ramachandran outliers of the chain as a percentile score with respect to all X-ray entries followed by that with respect to entries of similar resolution.

The Analysed column shows the number of residues for which the backbone conformation was analysed, and the total number of residues.

Mol	Chain	Analysed	Favoured	Allowed	Outliers	Percentiles	
1	A	270/282 (96%)	261 (97%)	9 (3%)	0	100	100
1	B	279/282 (99%)	271 (97%)	7 (2%)	1 (0%)	34	22
All	All	549/564 (97%)	532 (97%)	16 (3%)	1 (0%)	47	38

All (1) Ramachandran outliers are listed below:

Mol	Chain	Res	Type
1	B	200	TYR

### 5.3.2 Protein sidechains [i](#)

In the following table, the Percentiles column shows the percent sidechain outliers of the chain as a percentile score with respect to all X-ray entries followed by that with respect to entries of similar resolution.

The Analysed column shows the number of residues for which the sidechain conformation was analysed, and the total number of residues.

Mol	Chain	Analysed	Rotameric	Outliers	Percentiles	
1	A	230/244 (94%)	229 (100%)	1 (0%)	91	90
1	B	245/244 (100%)	243 (99%)	2 (1%)	81	80
All	All	475/488 (97%)	472 (99%)	3 (1%)	86	85

All (3) residues with a non-rotameric sidechain are listed below:

Mol	Chain	Res	Type
1	A	200	TYR
1	B	200	TYR
1	B	351	LEU

Sometimes sidechains can be flipped to improve hydrogen bonding and reduce clashes. All (1) such sidechains are listed below:

Mol	Chain	Res	Type
1	A	217	HIS

### 5.3.3 RNA [i](#)

There are no RNA molecules in this entry.

## 5.4 Non-standard residues in protein, DNA, RNA chains [i](#)

There are no non-standard protein/DNA/RNA residues in this entry.

## 5.5 Carbohydrates [i](#)

There are no monosaccharides in this entry.

## 5.6 Ligand geometry [i](#)

Of 5 ligands modelled in this entry, 2 are monoatomic - leaving 3 for Mogul analysis.

In the following table, the Counts columns list the number of bonds (or angles) for which Mogul statistics could be retrieved, the number of bonds (or angles) that are observed in the model and the number of bonds (or angles) that are defined in the Chemical Component Dictionary. The Link column lists molecule types, if any, to which the group is linked. The Z score for a bond length (or angle) is the number of standard deviations the observed value is removed from the expected value. A bond length (or angle) with  $|Z| > 2$  is considered an outlier worth inspection. RMSZ is the root-mean-square of all Z scores of the bond lengths (or angles).

Mol	Type	Chain	Res	Link	Bond lengths			Bond angles		
					Counts	RMSZ	# Z  > 2	Counts	RMSZ	# Z  > 2
5	5I7	B	403	-	75,84,84	1.61	15 (20%)	83,117,117	1.53	16 (19%)
3	5IA	A	402	-	75,83,83	2.48	24 (32%)	84,113,113	1.51	11 (13%)
4	PG4	B	402	-	12,12,12	0.16	0	11,11,11	0.52	0

In the following table, the Chirals column lists the number of chiral outliers, the number of chiral centers analysed, the number of these observed in the model and the number defined in the Chemical Component Dictionary. Similar counts are reported in the Torsion and Rings columns. '2' means no outliers of that kind were identified.

Mol	Type	Chain	Res	Link	Chirals	Torsions	Rings
5	5I7	B	403	-	-	24/65/116/116	0/6/6/6
3	5IA	A	402	-	-	14/70/108/108	0/5/5/5
4	PG4	B	402	-	-	5/10/10/10	-

All (39) bond length outliers are listed below:

Mol	Chain	Res	Type	Atoms	Z	Observed(Å)	Ideal(Å)
3	A	402	5IA	C68-N69	7.31	1.49	1.33
3	A	402	5IA	P06-O05	6.68	1.86	1.59
3	A	402	5IA	C38-C37	6.23	1.59	1.50

*Continued on next page...*

*Continued from previous page...*

Mol	Chain	Res	Type	Atoms	Z	Observed(Å)	Ideal(Å)
3	A	402	5IA	C71-C70	5.34	1.62	1.52
3	A	402	5IA	C58-N57	5.01	1.47	1.34
3	A	402	5IA	C60-C61	4.97	1.62	1.50
3	A	402	5IA	P08-O10	4.92	1.79	1.59
5	B	403	5I7	C68-N69	4.71	1.43	1.33
5	B	403	5I7	P08-O10	4.40	1.77	1.59
3	A	402	5IA	C56-C68	3.80	1.62	1.52
3	A	402	5IA	O59-C58	3.69	1.42	1.35
5	B	403	5I7	C15-C17	3.69	1.59	1.53
5	B	403	5I7	P06-O05	3.56	1.73	1.59
3	A	402	5IA	C21-N22	3.45	1.40	1.33
3	A	402	5IA	C55-C56	3.33	1.61	1.53
3	A	402	5IA	C11-C12	3.29	1.61	1.51
3	A	402	5IA	C56-N57	3.23	1.52	1.45
5	B	403	5I7	C71-C70	3.03	1.58	1.52
5	B	403	5I7	C58-N57	2.87	1.41	1.34
5	B	403	5I7	O59-C58	2.73	1.40	1.35
5	B	403	5I7	C55-C56	2.69	1.59	1.53
3	A	402	5IA	C71-N72	2.58	1.61	1.52
3	A	402	5IA	C15-C13	2.57	1.60	1.53
5	B	403	5I7	C52-N51	2.51	1.50	1.46
5	B	403	5I7	C21-N20	2.48	1.36	1.32
3	A	402	5IA	C13-C12	2.47	1.59	1.53
5	B	403	5I7	O32-C33	-2.42	1.39	1.43
3	A	402	5IA	C52-N51	2.34	1.53	1.46
5	B	403	5I7	P08-O29	-2.32	1.42	1.50
3	A	402	5IA	C66-C61	2.31	1.43	1.38
3	A	402	5IA	C23-N24	2.26	1.42	1.34
3	A	402	5IA	C53-C52	2.20	1.59	1.51
3	A	402	5IA	O05-C04	-2.16	1.36	1.44
5	B	403	5I7	C25-C19	2.13	1.46	1.40
3	A	402	5IA	C70-N69	2.12	1.51	1.46
5	B	403	5I7	O05-C04	-2.12	1.36	1.44
3	A	402	5IA	C63-C62	2.12	1.43	1.38
3	A	402	5IA	C77-N72	2.09	1.61	1.52
5	B	403	5I7	C60-C61	2.09	1.55	1.50

All (27) bond angle outliers are listed below:

Mol	Chain	Res	Type	Atoms	Z	Observed(°)	Ideal(°)
3	A	402	5IA	O59-C58-N57	6.48	123.67	110.50
3	A	402	5IA	O36-C35-C33	4.47	122.83	110.07

*Continued on next page...*

*Continued from previous page...*

Mol	Chain	Res	Type	Atoms	Z	Observed(°)	Ideal(°)
5	B	403	5I7	C25-C23-N24	4.41	127.06	120.35
5	B	403	5I7	O36-C35-C33	4.24	108.64	103.79
3	A	402	5IA	O59-C58-O67	-3.85	116.87	124.25
3	A	402	5IA	C13-C15-C17	-3.53	95.66	100.98
5	B	403	5I7	O36-C35-C02	3.53	117.44	110.17
5	B	403	5I7	O59-C58-N57	3.43	117.47	110.50
5	B	403	5I7	O28-C17-C15	-3.32	102.07	106.93
3	A	402	5IA	O67-C58-N57	-3.29	119.46	124.85
5	B	403	5I7	C17-N18-C19	3.24	132.34	126.64
3	A	402	5IA	C60-O59-C58	2.97	122.56	115.93
3	A	402	5IA	C25-C23-N24	2.90	124.77	120.35
5	B	403	5I7	O09-P08-O29	2.85	126.32	112.24
5	B	403	5I7	O09-P08-O10	-2.58	95.75	107.75
5	B	403	5I7	C35-C02-C03	-2.56	96.44	101.99
5	B	403	5I7	O59-C60-C61	2.54	115.50	109.39
5	B	403	5I7	C60-O59-C58	2.51	121.54	115.93
3	A	402	5IA	C56-C68-N69	2.45	121.48	116.54
3	A	402	5IA	O28-C17-C15	2.38	110.40	106.93
3	A	402	5IA	O01-C02-C03	2.34	117.82	111.05
5	B	403	5I7	C38-C39-C40	2.29	120.00	113.19
5	B	403	5I7	P08-O07-P06	2.23	140.49	132.83
3	A	402	5IA	C15-C13-C12	2.12	106.76	102.64
5	B	403	5I7	O59-C58-O67	-2.08	120.26	124.25
5	B	403	5I7	O28-C12-C13	2.08	109.22	105.11
5	B	403	5I7	C71-C70-N69	-2.03	106.35	111.68

There are no chirality outliers.

All (43) torsion outliers are listed below:

Mol	Chain	Res	Type	Atoms
3	A	402	5IA	N51-C37-O36-C35
3	A	402	5IA	C04-O05-P06-O30
5	B	403	5I7	C70-C71-N72-C73
5	B	403	5I7	C70-C71-N72-C75
5	B	403	5I7	C70-C71-N72-C77
3	A	402	5IA	C38-C37-O36-C35
5	B	403	5I7	C74-C73-N72-C75
3	A	402	5IA	C37-C38-C39-C40
5	B	403	5I7	N51-C52-C53-C54
5	B	403	5I7	C38-C39-C40-C41
5	B	403	5I7	C76-C75-N72-C71
4	B	402	PG4	O3-C5-C6-O4

*Continued on next page...*

*Continued from previous page...*

Mol	Chain	Res	Type	Atoms
5	B	403	5I7	C76-C75-N72-C77
5	B	403	5I7	C76-C75-N72-C73
4	B	402	PG4	O2-C3-C4-O3
4	B	402	PG4	O4-C7-C8-O5
5	B	403	5I7	C45-C46-C47-C48
3	A	402	5IA	C43-C44-C45-C46
5	B	403	5I7	C74-C73-N72-C71
5	B	403	5I7	C74-C73-N72-C77
5	B	403	5I7	C46-C47-C48-C49
5	B	403	5I7	C44-C45-C46-C47
3	A	402	5IA	C38-C39-C40-C41
3	A	402	5IA	C52-C53-C54-C55
3	A	402	5IA	C47-C48-C49-C50
5	B	403	5I7	C39-C40-C41-C42
5	B	403	5I7	C40-C41-C42-C43
3	A	402	5IA	C40-C41-C42-C43
3	A	402	5IA	C44-C45-C46-C47
3	A	402	5IA	C42-C43-C44-C45
4	B	402	PG4	C5-C6-O4-C7
5	B	403	5I7	C78-C77-N72-C75
5	B	403	5I7	N69-C70-C71-N72
4	B	402	PG4	C6-C5-O3-C4
5	B	403	5I7	C42-C43-C44-C45
3	A	402	5IA	C41-C42-C43-C44
5	B	403	5I7	C78-C77-N72-C71
5	B	403	5I7	C78-C77-N72-C73
3	A	402	5IA	O10-C11-C12-O28
5	B	403	5I7	C53-C54-C55-C56
5	B	403	5I7	C47-C48-C49-C50
5	B	403	5I7	O10-C11-C12-O28
3	A	402	5IA	C45-C46-C47-C48

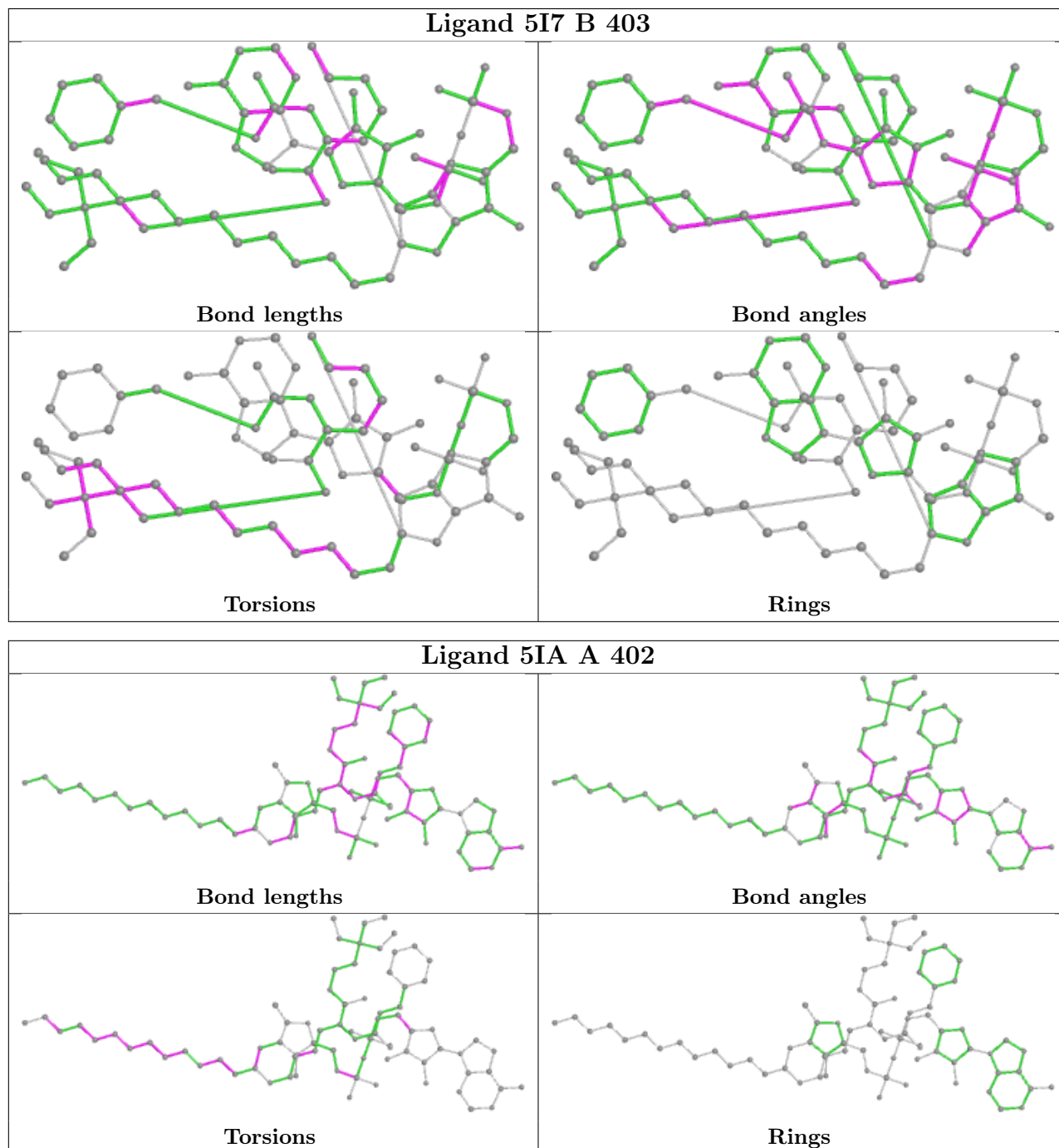
There are no ring outliers.

2 monomers are involved in 2 short contacts:

Mol	Chain	Res	Type	Clashes	Symm-Clashes
5	B	403	5I7	1	0
3	A	402	5IA	1	0

The following is a two-dimensional graphical depiction of Mogul quality analysis of bond lengths, bond angles, torsion angles, and ring geometry for all instances of the Ligand of Interest. In addition, ligands with molecular weight > 250 and outliers as shown on the validation Tables will

also be included. For torsion angles, if less than 5% of the Mogul distribution of torsion angles is within 10 degrees of the torsion angle in question, then that torsion angle is considered an outlier. Any bond that is central to one or more torsion angles identified as an outlier by Mogul will be highlighted in the graph. For rings, the root-mean-square deviation (RMSD) between the ring in question and similar rings identified by Mogul is calculated over all ring torsion angles. If the average RMSD is greater than 60 degrees and the minimal RMSD between the ring in question and any Mogul-identified rings is also greater than 60 degrees, then that ring is considered an outlier. The outliers are highlighted in purple. The color gray indicates Mogul did not find sufficient equivalents in the CSD to analyse the geometry.



## 5.7 Other polymers [i](#)

There are no such residues in this entry.

## 5.8 Polymer linkage issues [i](#)

There are no chain breaks in this entry.



## 6 Fit of model and data [i](#)

### 6.1 Protein, DNA and RNA chains [i](#)

In the following table, the column labelled ‘#RSRZ > 2’ contains the number (and percentage) of RSRZ outliers, followed by percent RSRZ outliers for the chain as percentile scores relative to all X-ray entries and entries of similar resolution. The OWAB column contains the minimum, median, 95<sup>th</sup> percentile and maximum values of the occupancy-weighted average B-factor per residue. The column labelled ‘Q < 0.9’ lists the number of (and percentage) of residues with an average occupancy less than 0.9.

Mol	Chain	Analysed	<RSRZ>	#RSRZ>2	OWAB(Å <sup>2</sup> )	Q<0.9
1	A	270/282 (95%)	0.43	22 (8%) 12 18	34, 48, 77, 112	0
1	B	274/282 (97%)	0.38	11 (4%) 38 48	24, 38, 70, 105	1 (0%)
All	All	544/564 (96%)	0.40	33 (6%) 21 29	24, 44, 76, 112	1 (0%)

All (33) RSRZ outliers are listed below:

Mol	Chain	Res	Type	RSRZ
1	B	200	TYR	5.1
1	A	202	GLY	5.1
1	A	201	PRO	4.7
1	B	201	PRO	4.5
1	A	200	TYR	4.3
1	B	395	ASP	3.6
1	A	172	ASP	3.2
1	B	394	LEU	3.1
1	A	391	THR	3.0
1	A	275	ASP	2.9
1	A	176	PRO	2.9
1	A	276	ARG	2.8
1	A	175	TYR	2.8
1	B	273	MET	2.8
1	A	269	ARG	2.7
1	A	173	LEU	2.7
1	A	251	PHE	2.6
1	A	196	ALA	2.6
1	B	274	ALA	2.6
1	A	198	GLU	2.6
1	A	133	ARG	2.3
1	A	266	GLU	2.3
1	A	199	LEU	2.3
1	A	203	ASN	2.3

*Continued on next page...*

*Continued from previous page...*

Mol	Chain	Res	Type	RSRZ
1	B	276	ARG	2.3
1	B	203	ASN	2.2
1	B	348	VAL	2.2
1	B	172	ASP	2.1
1	A	129	ALA	2.1
1	B	196	ALA	2.1
1	A	273	MET	2.1
1	A	271	ASP	2.0
1	A	389[A]	ARG	2.0

## 6.2 Non-standard residues in protein, DNA, RNA chains [i](#)

There are no non-standard protein/DNA/RNA residues in this entry.

## 6.3 Carbohydrates [i](#)

There are no monosaccharides in this entry.

## 6.4 Ligands [i](#)

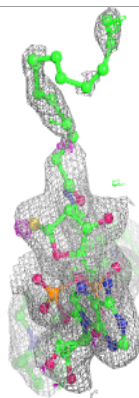
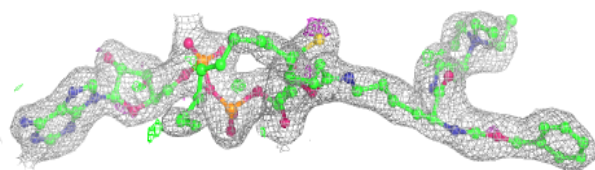
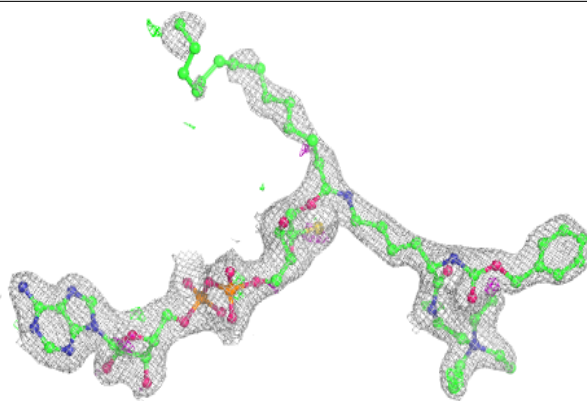
In the following table, the Atoms column lists the number of modelled atoms in the group and the number defined in the chemical component dictionary. The B-factors column lists the minimum, median, 95<sup>th</sup> percentile and maximum values of B factors of atoms in the group. The column labelled 'Q< 0.9' lists the number of atoms with occupancy less than 0.9.

Mol	Type	Chain	Res	Atoms	RSCC	RSR	B-factors(Å <sup>2</sup> )	Q<0.9
4	PG4	B	402	13/13	0.87	0.12	39,44,53,57	0
3	5IA	A	402	79/79	0.95	0.15	30,42,66,77	0
5	5I7	B	403	79/79	0.96	0.16	25,36,57,63	0
2	ZN	B	401	1/1	0.99	0.04	46,46,46,46	0
2	ZN	A	401	1/1	0.99	0.06	36,36,36,36	0

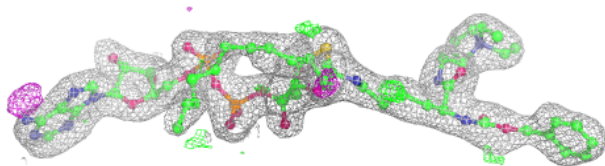
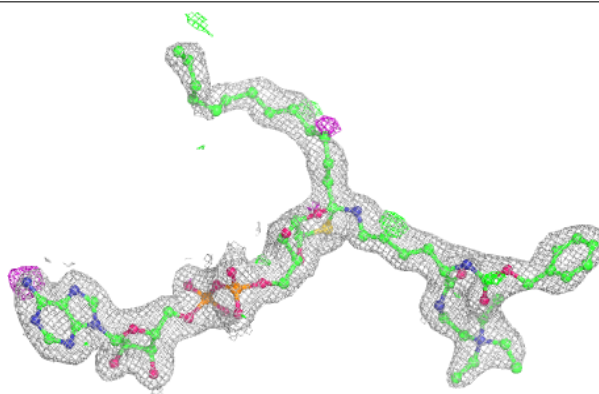
The following is a graphical depiction of the model fit to experimental electron density of all instances of the Ligand of Interest. In addition, ligands with molecular weight > 250 and outliers as shown on the geometry validation Tables will also be included. Each fit is shown from different orientation to approximate a three-dimensional view.

**Electron density around 5IA A 402:**

$2mF_o-DF_c$  (at 0.7 rmsd) in gray  
 $mF_o-DF_c$  (at 3 rmsd) in purple (negative)  
and green (positive)

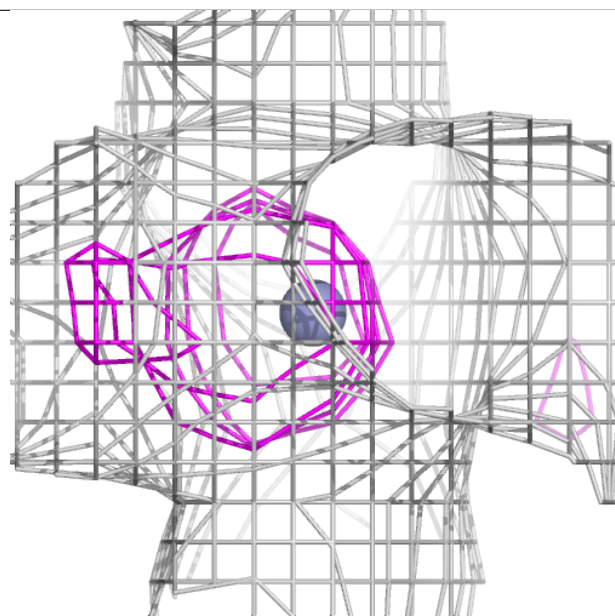
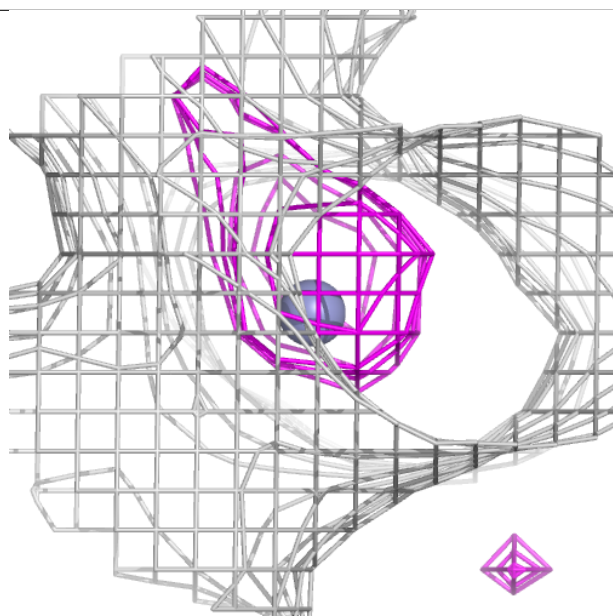
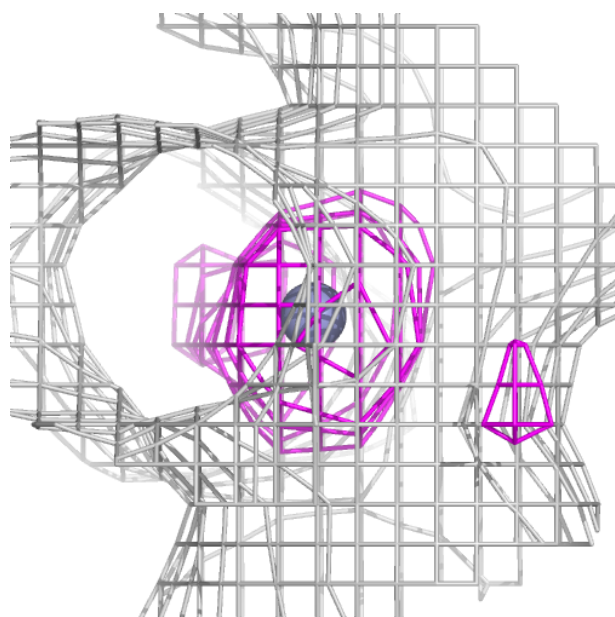
**Electron density around 5I7 B 403:**

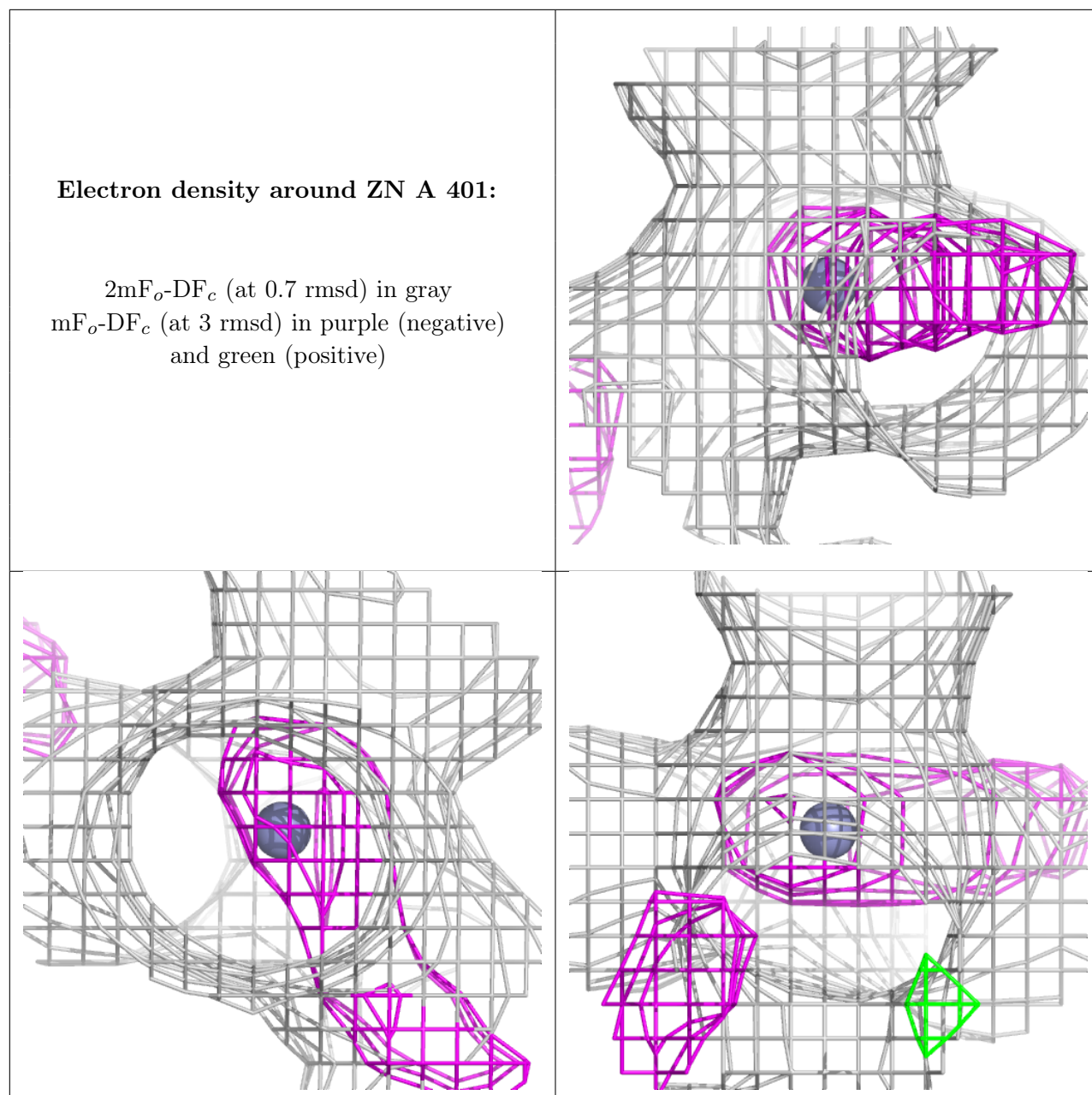
$2mF_o-DF_c$  (at 0.7 rmsd) in gray  
 $mF_o-DF_c$  (at 3 rmsd) in purple (negative)  
and green (positive)



**Electron density around ZN B 401:**

$2mF_o-DF_c$  (at 0.7 rmsd) in gray  
 $mF_o-DF_c$  (at 3 rmsd) in purple (negative)  
and green (positive)





## 6.5 Other polymers [i](#)

There are no such residues in this entry.