



Full wwPDB X-ray Structure Validation Report ⓘ

May 23, 2020 – 06:22 pm BST

PDB ID : 1CCG
Title : CONSTRUCTION OF A BIS-AQUO HEME ENZYME AND REPLACEMENT WITH EXOGENOUS LIGAND
Authors : Mcree, D.E.; Jensen, G.M.; Fitzgerald, M.M.; Siegel, H.A.; Goodin, D.B.
Deposited on : 1994-05-04
Resolution : 2.10 Å(reported)

This is a Full wwPDB X-ray Structure Validation Report for a publicly released PDB entry.

We welcome your comments at validation@mail.wwpdb.org

A user guide is available at

<https://www.wwpdb.org/validation/2017/XrayValidationReportHelp>

with specific help available everywhere you see the ⓘ symbol.

The following versions of software and data (see [references ⓘ](#)) were used in the production of this report:

MolProbity : 4.02b-467
Mogul : 1.8.5 (274361), CSD as541be (2020)
Xtrriage (Phenix) : **NOT EXECUTED**
EDS : **NOT EXECUTED**
buster-report : 1.1.7 (2018)
Percentile statistics : 20191225.v01 (using entries in the PDB archive December 25th 2019)
Ideal geometry (proteins) : Engh & Huber (2001)
Ideal geometry (DNA, RNA) : Parkinson et al. (1996)
Validation Pipeline (wwPDB-VP) : 2.11

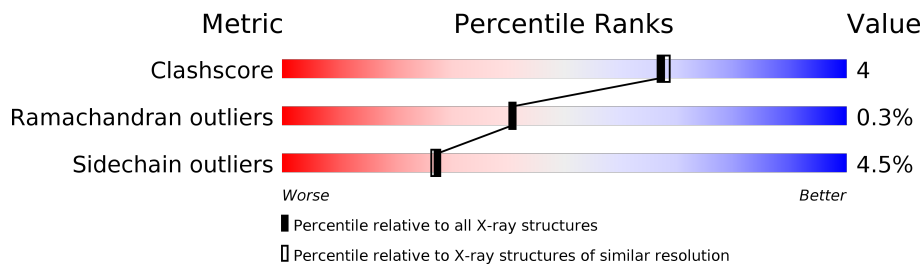
1 Overall quality at a glance

The following experimental techniques were used to determine the structure:

X-RAY DIFFRACTION

The reported resolution of this entry is 2.10 Å.

Percentile scores (ranging between 0-100) for global validation metrics of the entry are shown in the following graphic. The table shows the number of entries on which the scores are based.



Metric	Whole archive (#Entries)	Similar resolution (#Entries, resolution range(Å))
Clashscore	141614	5710 (2.10-2.10)
Ramachandran outliers	138981	5647 (2.10-2.10)
Sidechain outliers	138945	5648 (2.10-2.10)

The table below summarises the geometric issues observed across the polymeric chains and their fit to the electron density. The red, orange, yellow and green segments on the lower bar indicate the fraction of residues that contain outliers for ≥ 3 , 2, 1 and 0 types of geometric quality criteria respectively. A grey segment represents the fraction of residues that are not modelled. The numeric value for each fraction is indicated below the corresponding segment, with a dot representing fractions $\leq 5\%$

Note EDS was not executed.

Mol	Chain	Length	Quality of chain
1	A	291	81% 15% . .

2 Entry composition [i](#)

There are 4 unique types of molecules in this entry. The entry contains 2980 atoms, of which 506 are hydrogens and 0 are deuteriums.

In the tables below, the ZeroOcc column contains the number of atoms modelled with zero occupancy, the AltConf column contains the number of residues with at least one atom in alternate conformation and the Trace column contains the number of residues modelled with at most 2 atoms.

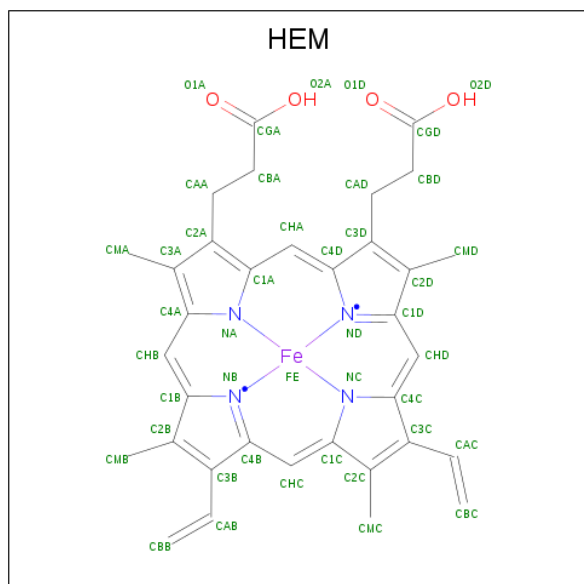
- Molecule 1 is a protein called CYTOCHROME C PEROXIDASE.

Mol	Chain	Residues	Atoms					ZeroOcc	AltConf	Trace	
			Total	C	H	N	O				S
1	A	291	2847	1497	505	388	451	6	0	0	0

There are 3 discrepancies between the modelled and reference sequences:

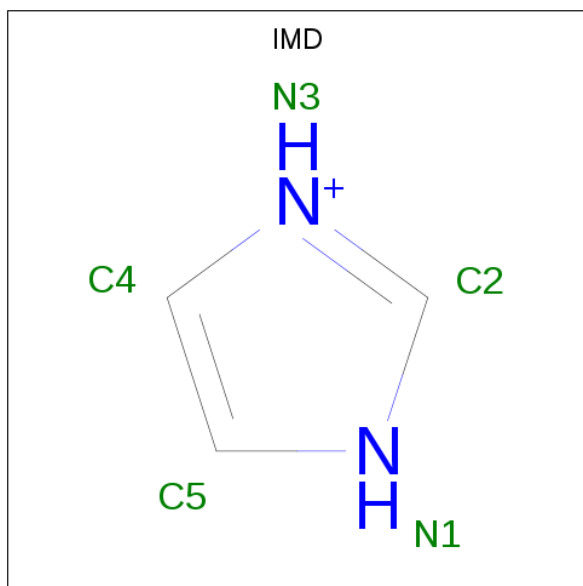
Chain	Residue	Modelled	Actual	Comment	Reference
A	53	ILE	THR	CONFLICT	UNP P00431
A	152	GLY	ASP	CONFLICT	UNP P00431
A	175	GLY	HIS	CONFLICT	UNP P00431

- Molecule 2 is PROTOPORPHYRIN IX CONTAINING FE (three-letter code: HEM) (formula: $C_{34}H_{32}FeN_4O_4$).



Mol	Chain	Residues	Atoms					ZeroOcc	AltConf
			Total	C	Fe	N	O		
2	A	1	43	34	1	4	4	0	0

- Molecule 3 is IMIDAZOLE (three-letter code: IMD) (formula: $C_3H_5N_2$).



Mol	Chain	Residues	Atoms				ZeroOcc	AltConf
			Total	C	H	N		
3	A	1	6	3	1	2	0	0

- Molecule 4 is water.


Mol	Chain	Residues	Atoms		ZeroOcc	AltConf
			Total	O		
4	A	84	84	84	0	0

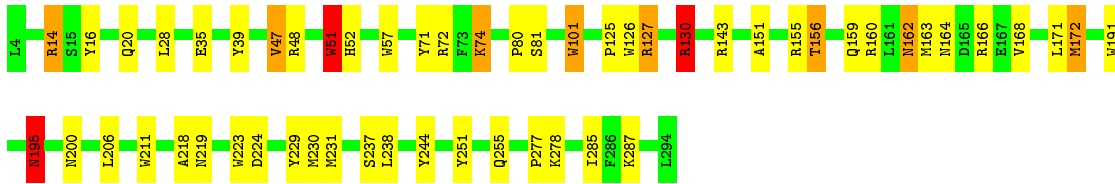
3 Residue-property plots [i](#)

These plots are drawn for all protein, RNA and DNA chains in the entry. The first graphic for a chain summarises the proportions of the various outlier classes displayed in the second graphic. The second graphic shows the sequence view annotated by issues in geometry. Residues are color-coded according to the number of geometric quality criteria for which they contain at least one outlier: green = 0, yellow = 1, orange = 2 and red = 3 or more. Stretches of 2 or more consecutive residues without any outlier are shown as a green connector. Residues present in the sample, but not in the model, are shown in grey.

Note EDS was not executed.

- Molecule 1: CYTOCHROME C PEROXIDASE

Chain A:  81% 15% ..



4 Data and refinement statistics

Xtrriage (Phenix) and EDS were not executed - this section is therefore incomplete.

Property	Value	Source
Space group	P 21 21 21	Depositor
Cell constants a, b, c, α , β , γ	105.20Å 74.30Å 45.40Å 90.00° 90.00° 90.00°	Depositor
Resolution (Å)	5.00 – 2.10	Depositor
% Data completeness (in resolution range)	(Not available) (5.00-2.10)	Depositor
R_{merge}	(Not available)	Depositor
R_{sym}	(Not available)	Depositor
Refinement program	X-PLOR	Depositor
R, R_{free}	0.190 , (Not available)	Depositor
Estimated twinning fraction	No twinning to report.	Xtrriage
Total number of atoms	2980	wwPDB-VP
Average B, all atoms (Å ²)	17.0	wwPDB-VP

5 Model quality i

5.1 Standard geometry i

Bond lengths and bond angles in the following residue types are not validated in this section: HEM, IMD

The Z score for a bond length (or angle) is the number of standard deviations the observed value is removed from the expected value. A bond length (or angle) with $|Z| > 5$ is considered an outlier worth inspection. RMSZ is the root-mean-square of all Z scores of the bond lengths (or angles).

Mol	Chain	Bond lengths		Bond angles	
		RMSZ	# Z >5	RMSZ	# Z >5
1	A	0.88	0/2407	1.81	55/3258 (1.7%)

Chiral center outliers are detected by calculating the chiral volume of a chiral center and verifying if the center is modelled as a planar moiety or with the opposite hand. A planarity outlier is detected by checking planarity of atoms in a peptide group, atoms in a mainchain group or atoms of a sidechain that are expected to be planar.

Mol	Chain	#Chirality outliers	#Planarity outliers
1	A	0	2

There are no bond length outliers.

All (55) bond angle outliers are listed below:

Mol	Chain	Res	Type	Atoms	Z	Observed(°)	Ideal(°)
1	A	155	ARG	NE-CZ-NH2	-20.30	110.15	120.30
1	A	160	ARG	NE-CZ-NH1	19.28	129.94	120.30
1	A	130	ARG	NE-CZ-NH2	-18.95	110.83	120.30
1	A	155	ARG	NE-CZ-NH1	18.50	129.55	120.30
1	A	14	ARG	NE-CZ-NH1	15.54	128.07	120.30
1	A	130	ARG	NE-CZ-NH1	14.44	127.52	120.30
1	A	160	ARG	NE-CZ-NH2	-13.05	113.78	120.30
1	A	14	ARG	NE-CZ-NH2	-11.89	114.36	120.30
1	A	166	ARG	NE-CZ-NH1	10.87	125.74	120.30
1	A	163	MET	CG-SD-CE	-9.25	85.39	100.20
1	A	160	ARG	CD-NE-CZ	8.65	135.71	123.60
1	A	48	ARG	NE-CZ-NH2	-8.62	115.99	120.30
1	A	51	TRP	CD1-CG-CD2	8.19	112.85	106.30
1	A	71	TYR	CB-CG-CD2	-7.70	116.38	121.00
1	A	244	TYR	CB-CG-CD2	-7.63	116.42	121.00
1	A	72	ARG	NE-CZ-NH1	7.59	124.10	120.30

Continued on next page...

Continued from previous page...

Mol	Chain	Res	Type	Atoms	Z	Observed(°)	Ideal(°)
1	A	101	TRP	CD1-CG-CD2	7.57	112.36	106.30
1	A	51	TRP	CE2-CD2-CG	-7.57	101.25	107.30
1	A	126	TRP	CD1-CG-CD2	7.48	112.29	106.30
1	A	211	TRP	CD1-CG-CD2	7.41	112.23	106.30
1	A	191	TRP	CD1-CG-CD2	7.28	112.13	106.30
1	A	191	TRP	CE2-CD2-CG	-7.10	101.62	107.30
1	A	251	TYR	CB-CG-CD2	-7.05	116.77	121.00
1	A	101	TRP	CE2-CD2-CG	-6.99	101.71	107.30
1	A	211	TRP	CE2-CD2-CG	-6.85	101.82	107.30
1	A	127	ARG	NE-CZ-NH2	-6.75	116.92	120.30
1	A	172	MET	CG-SD-CE	-6.67	89.54	100.20
1	A	223	TRP	CE2-CD2-CG	-6.61	102.01	107.30
1	A	48	ARG	NE-CZ-NH1	6.57	123.59	120.30
1	A	223	TRP	CD1-CG-CD2	6.35	111.38	106.30
1	A	130	ARG	CD-NE-CZ	6.17	132.24	123.60
1	A	48	ARG	CB-CG-CD	6.15	127.60	111.60
1	A	277	PRO	CA-C-N	6.08	130.57	117.20
1	A	160	ARG	CG-CD-NE	6.05	124.50	111.80
1	A	16	TYR	CB-CG-CD2	-6.00	117.40	121.00
1	A	159	GLN	CG-CD-NE2	5.97	131.03	116.70
1	A	162	ASN	CA-C-N	-5.91	104.19	117.20
1	A	278	LYS	CA-CB-CG	-5.84	100.56	113.40
1	A	51	TRP	CB-CG-CD1	-5.82	119.43	127.00
1	A	156	THR	CA-CB-CG2	5.82	120.55	112.40
1	A	224	ASP	CB-CG-OD2	5.80	123.52	118.30
1	A	126	TRP	CE2-CD2-CG	-5.77	102.68	107.30
1	A	57	TRP	CE2-CD2-CG	-5.70	102.74	107.30
1	A	101	TRP	CG-CD1-NE1	-5.63	104.47	110.10
1	A	159	GLN	OE1-CD-NE2	-5.58	109.07	121.90
1	A	230	MET	CG-SD-CE	-5.57	91.28	100.20
1	A	47	VAL	CG1-CB-CG2	5.55	119.78	110.90
1	A	229	TYR	CB-CG-CD2	-5.37	117.78	121.00
1	A	14	ARG	CB-CG-CD	5.37	125.55	111.60
1	A	195	ASN	N-CA-C	5.32	125.37	111.00
1	A	130	ARG	CG-CD-NE	-5.21	100.87	111.80
1	A	191	TRP	CB-CG-CD1	-5.10	120.36	127.00
1	A	57	TRP	CD1-CG-CD2	5.04	110.33	106.30
1	A	191	TRP	CG-CD2-CE3	5.03	138.43	133.90
1	A	230	MET	CA-CB-CG	5.03	121.85	113.30

There are no chirality outliers.

All (2) planarity outliers are listed below:

Mol	Chain	Res	Type	Group
1	A	130	ARG	Sidechain
1	A	39	TYR	Sidechain

5.2 Too-close contacts

In the following table, the Non-H and H(model) columns list the number of non-hydrogen atoms and hydrogen atoms in the chain respectively. The H(added) column lists the number of hydrogen atoms added and optimized by MolProbity. The Clashes column lists the number of clashes within the asymmetric unit, whereas Symm-Clashes lists symmetry related clashes.

Mol	Chain	Non-H	H(model)	H(added)	Clashes	Symm-Clashes
1	A	2342	505	2214	18	0
2	A	43	0	30	0	0
3	A	5	1	4	0	0
4	A	84	0	0	1	0
All	All	2474	506	2248	18	0

The all-atom clashscore is defined as the number of clashes found per 1000 atoms (including hydrogen atoms). The all-atom clashscore for this structure is 4.

All (18) close contacts within the same asymmetric unit are listed below, sorted by their clash magnitude.

Atom-1	Atom-2	Interatomic distance (Å)	Clash overlap (Å)
1:A:195:ASN:HD22	1:A:195:ASN:H	1.45	0.64
1:A:74:LYS:H	1:A:74:LYS:HD2	1.63	0.63
1:A:20:GLN:HE22	1:A:287:LYS:H	1.53	0.57
1:A:20:GLN:HE22	1:A:287:LYS:N	2.07	0.52
1:A:200:ASN:H	1:A:255:GLN:HE21	1.59	0.49
1:A:172:MET:HB3	4:A:352:HOH:O	2.12	0.49
1:A:206:LEU:HD13	1:A:231:MET:SD	2.55	0.47
1:A:127:ARG:O	1:A:130:ARG:NH2	2.50	0.45
1:A:195:ASN:ND2	1:A:195:ASN:H	2.14	0.45
1:A:125:PRO:HG3	1:A:285:ILE:HD11	2.00	0.44
1:A:51:TRP:CD1	1:A:52:HIS:HD2	2.35	0.43
1:A:14:ARG:HG3	1:A:101:TRP:CZ3	2.53	0.43
1:A:164:ASN:O	1:A:168:VAL:HG23	2.18	0.43
1:A:172:MET:HG2	1:A:238:LEU:HD11	2.02	0.42
1:A:218:ALA:O	1:A:219:ASN:HB2	2.20	0.41
1:A:151:ALA:HB2	1:A:237:SER:HB3	2.01	0.41
1:A:125:PRO:HG3	1:A:285:ILE:CD1	2.50	0.40
1:A:74:LYS:H	1:A:74:LYS:CD	2.33	0.40

There are no symmetry-related clashes.

5.3 Torsion angles [i](#)

5.3.1 Protein backbone [i](#)

In the following table, the Percentiles column shows the percent Ramachandran outliers of the chain as a percentile score with respect to all X-ray entries followed by that with respect to entries of similar resolution.

The Analysed column shows the number of residues for which the backbone conformation was analysed, and the total number of residues.

Mol	Chain	Analysed	Favoured	Allowed	Outliers	Percentiles
1	A	289/291 (99%)	278 (96%)	10 (4%)	1 (0%)	41 41

All (1) Ramachandran outliers are listed below:

Mol	Chain	Res	Type
1	A	162	ASN

5.3.2 Protein sidechains [i](#)

In the following table, the Percentiles column shows the percent sidechain outliers of the chain as a percentile score with respect to all X-ray entries followed by that with respect to entries of similar resolution.

The Analysed column shows the number of residues for which the sidechain conformation was analysed, and the total number of residues.

Mol	Chain	Analysed	Rotameric	Outliers	Percentiles
1	A	246/248 (99%)	235 (96%)	11 (4%)	27 27

All (11) residues with a non-rotameric sidechain are listed below:

Mol	Chain	Res	Type
1	A	28	LEU
1	A	35	GLU
1	A	47	VAL
1	A	51	TRP
1	A	74	LYS
1	A	80	PRO
1	A	81	SER

Continued on next page...

Continued from previous page...

Mol	Chain	Res	Type
1	A	143	ARG
1	A	156	THR
1	A	171	LEU
1	A	195	ASN

Some sidechains can be flipped to improve hydrogen bonding and reduce clashes. All (7) such sidechains are listed below:

Mol	Chain	Res	Type
1	A	20	GLN
1	A	24	ASN
1	A	195	ASN
1	A	220	ASN
1	A	240	GLN
1	A	255	GLN
1	A	292	GLN

5.3.3 RNA [i](#)

There are no RNA molecules in this entry.

5.4 Non-standard residues in protein, DNA, RNA chains [i](#)

There are no non-standard protein/DNA/RNA residues in this entry.

5.5 Carbohydrates [i](#)

There are no carbohydrates in this entry.

5.6 Ligand geometry [i](#)

2 ligands are modelled in this entry.

In the following table, the Counts columns list the number of bonds (or angles) for which Mogul statistics could be retrieved, the number of bonds (or angles) that are observed in the model and the number of bonds (or angles) that are defined in the Chemical Component Dictionary. The Link column lists molecule types, if any, to which the group is linked. The Z score for a bond length (or angle) is the number of standard deviations the observed value is removed from the expected value. A bond length (or angle) with $|Z| > 2$ is considered an outlier worth inspection. RMSZ is the root-mean-square of all Z scores of the bond lengths (or angles).

Mol	Type	Chain	Res	Link	Bond lengths			Bond angles		
					Counts	RMSZ	# Z > 2	Counts	RMSZ	# Z > 2
3	IMD	A	575	2	3,5,5	1.21	0	4,5,5	1.21	0
2	HEM	A	1	3,4	27,50,50	1.43	4 (14%)	17,82,82	2.00	5 (29%)

In the following table, the Chirals column lists the number of chiral outliers, the number of chiral centers analysed, the number of these observed in the model and the number defined in the Chemical Component Dictionary. Similar counts are reported in the Torsion and Rings columns. '-' means no outliers of that kind were identified.

Mol	Type	Chain	Res	Link	Chirals	Torsions	Rings
3	IMD	A	575	2	-	-	0/1/1/1
2	HEM	A	1	3,4	-	0/6/54/54	-

All (4) bond length outliers are listed below:

Mol	Chain	Res	Type	Atoms	Z	Observed(Å)	Ideal(Å)
2	A	1	HEM	C3B-CAB	-3.41	1.41	1.47
2	A	1	HEM	C3C-CAC	-3.37	1.40	1.47
2	A	1	HEM	CBB-CAB	2.27	1.44	1.29
2	A	1	HEM	CBC-CAC	2.17	1.43	1.29

All (5) bond angle outliers are listed below:

Mol	Chain	Res	Type	Atoms	Z	Observed(°)	Ideal(°)
2	A	1	HEM	C1D-C2D-C3D	-4.64	103.77	107.00
2	A	1	HEM	CMB-C2B-C3B	3.49	131.21	124.68
2	A	1	HEM	C4A-C3A-C2A	-3.00	104.91	107.00
2	A	1	HEM	CMC-C2C-C3C	2.88	130.07	124.68
2	A	1	HEM	CBA-CAA-C2A	2.24	116.62	112.49

There are no chirality outliers.

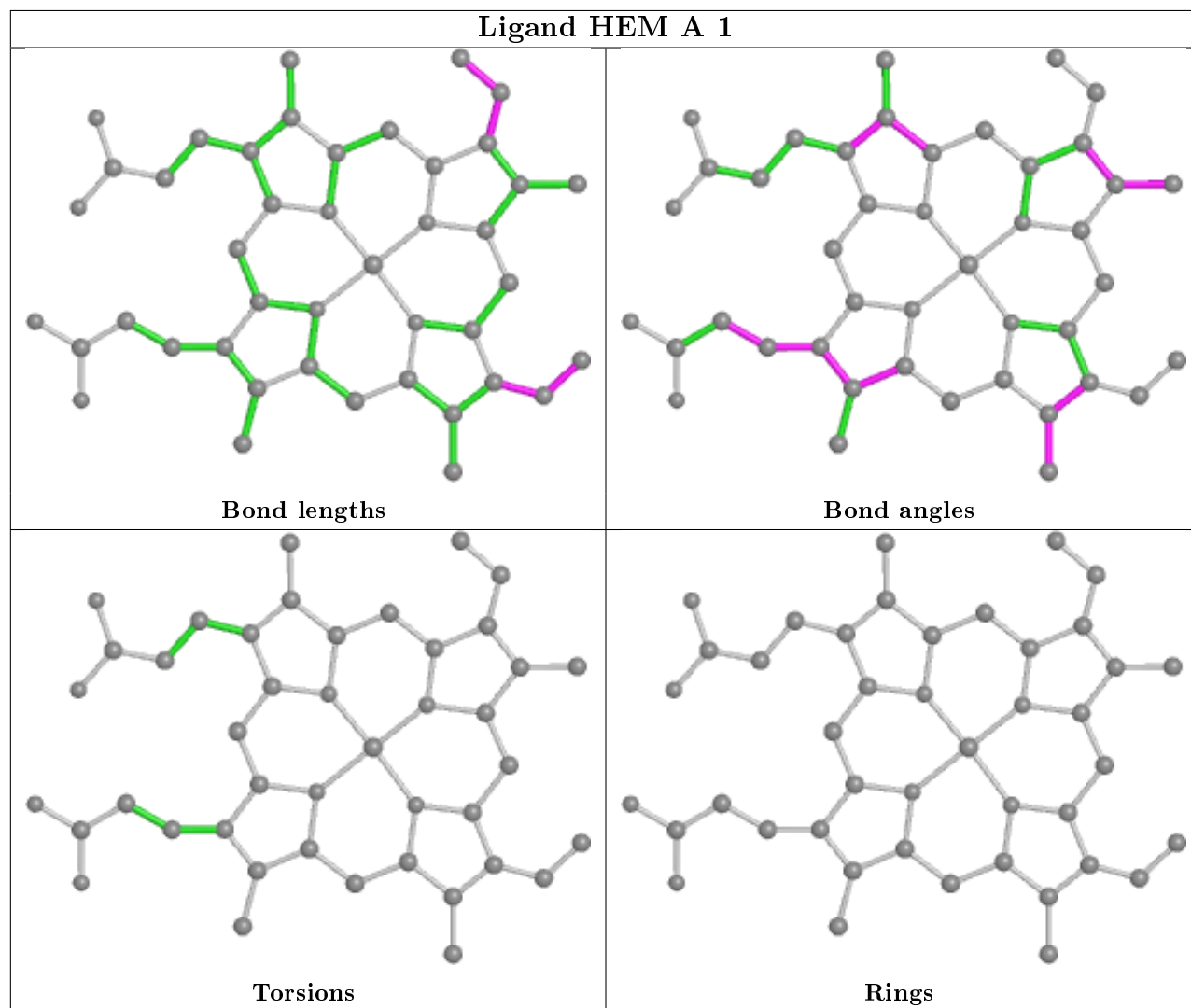
There are no torsion outliers.

There are no ring outliers.

No monomer is involved in short contacts.

The following is a two-dimensional graphical depiction of Mogul quality analysis of bond lengths, bond angles, torsion angles, and ring geometry for all instances of the Ligand of Interest. In addition, ligands with molecular weight > 250 and outliers as shown on the validation Tables will also be included. For torsion angles, if less than 5% of the Mogul distribution of torsion angles is within 10 degrees of the torsion angle in question, then that torsion angle is considered an outlier. Any bond that is central to one or more torsion angles identified as an outlier by Mogul will be highlighted in the graph. For rings, the root-mean-square deviation (RMSD) between the ring

in question and similar rings identified by Mogul is calculated over all ring torsion angles. If the average RMSD is greater than 60 degrees and the minimal RMSD between the ring in question and any Mogul-identified rings is also greater than 60 degrees, then that ring is considered an outlier. The outliers are highlighted in purple. The color gray indicates Mogul did not find sufficient equivalents in the CSD to analyse the geometry.



5.7 Other polymers [i](#)

There are no such residues in this entry.

5.8 Polymer linkage issues [i](#)

There are no chain breaks in this entry.

6 Fit of model and data

6.1 Protein, DNA and RNA chains

EDS was not executed - this section is therefore empty.

6.2 Non-standard residues in protein, DNA, RNA chains

EDS was not executed - this section is therefore empty.

6.3 Carbohydrates

EDS was not executed - this section is therefore empty.

6.4 Ligands

EDS was not executed - this section is therefore empty.

6.5 Other polymers

EDS was not executed - this section is therefore empty.