



Full wwPDB X-ray Structure Validation Report ⓘ

Jun 16, 2024 – 08:03 AM EDT

PDB ID : 2CCY
Title : STRUCTURE OF FERRICYTOCHROME C(PRIME) FROM RHO-
DOSPIRILLUM MOLISCHIANUM AT 1.67 ANGSTROMS RESOLUTION
Authors : Finzel, B.C.; Weber, P.C.; Hardman, K.D.; Salemme, F.R.
Deposited on : 1985-08-27
Resolution : 1.67 Å(reported)

This is a Full wwPDB X-ray Structure Validation Report for a publicly released PDB entry.

We welcome your comments at validation@mail.wwpdb.org

A user guide is available at

<https://www.wwpdb.org/validation/2017/XrayValidationReportHelp>

with specific help available everywhere you see the ⓘ symbol.

The types of validation reports are described at

<http://www.wwpdb.org/validation/2017/FAQs#types>.

The following versions of software and data (see [references ⓘ](#)) were used in the production of this report:

MolProbity : 4.02b-467
Mogul : 2022.3.0, CSD as543be (2022)
Xtrriage (Phenix) : 1.20.1
EDS : 2.37.1
buster-report : 1.1.7 (2018)
Percentile statistics : 20191225.v01 (using entries in the PDB archive December 25th 2019)
Refmac : 5.8.0158
CCP4 : 7.0.044 (Gargrove)
Ideal geometry (proteins) : Engh & Huber (2001)
Ideal geometry (DNA, RNA) : Parkinson et al. (1996)
Validation Pipeline (wwPDB-VP) : 2.37.1

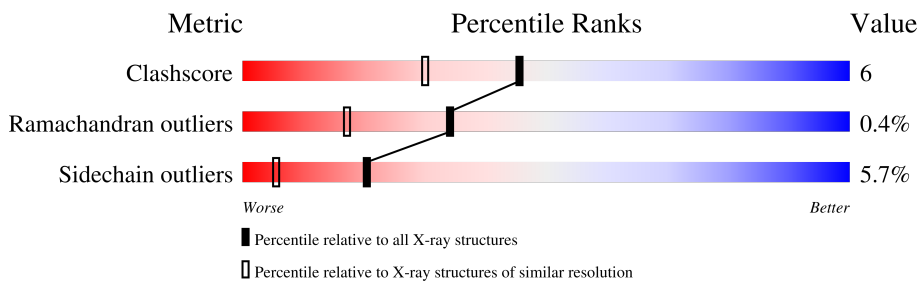
1 Overall quality at a glance

The following experimental techniques were used to determine the structure:

X-RAY DIFFRACTION

The reported resolution of this entry is 1.67 Å.

Percentile scores (ranging between 0-100) for global validation metrics of the entry are shown in the following graphic. The table shows the number of entries on which the scores are based.



Metric	Whole archive (#Entries)	Similar resolution (#Entries, resolution range(Å))
Clashscore	141614	7310 (1.70-1.66)
Ramachandran outliers	138981	7173 (1.70-1.66)
Sidechain outliers	138945	7172 (1.70-1.66)

The table below summarises the geometric issues observed across the polymeric chains and their fit to the electron density. The red, orange, yellow and green segments of the lower bar indicate the fraction of residues that contain outliers for ≥ 3 , 2, 1 and 0 types of geometric quality criteria respectively. A grey segment represents the fraction of residues that are not modelled. The numeric value for each fraction is indicated below the corresponding segment, with a dot representing fractions $\leq 5\%$

Mol	Chain	Length	Quality of chain
1	A	128	
1	B	128	

2 Entry composition [i](#)

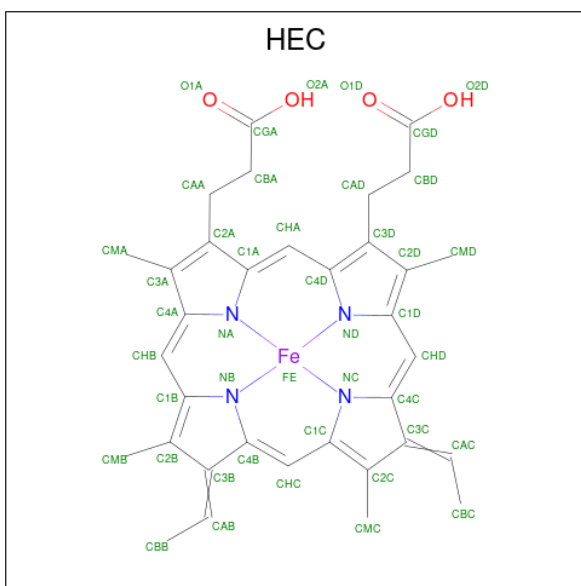
There are 3 unique types of molecules in this entry. The entry contains 2146 atoms, of which 0 are hydrogens and 0 are deuteriums.

In the tables below, the ZeroOcc column contains the number of atoms modelled with zero occupancy, the AltConf column contains the number of residues with at least one atom in alternate conformation and the Trace column contains the number of residues modelled with at most 2 atoms.

- Molecule 1 is a protein called CYTOCHROME C.

Mol	Chain	Residues	Atoms					ZeroOcc	AltConf	Trace
			Total	C	N	O	S			
1	A	127	Total	C	N	O	S	0	1	0
			933	588	162	178	5			
1	B	127	Total	C	N	O	S	0	1	0
			933	588	162	178	5			

- Molecule 2 is HEME C (three-letter code: HEC) (formula: $C_{34}H_{34}FeN_4O_4$).



Mol	Chain	Residues	Atoms					ZeroOcc	AltConf
			Total	C	Fe	N	O		
2	A	1	Total	C	Fe	N	O	0	0
			43	34	1	4	4		
2	B	1	Total	C	Fe	N	O	0	0
			43	34	1	4	4		

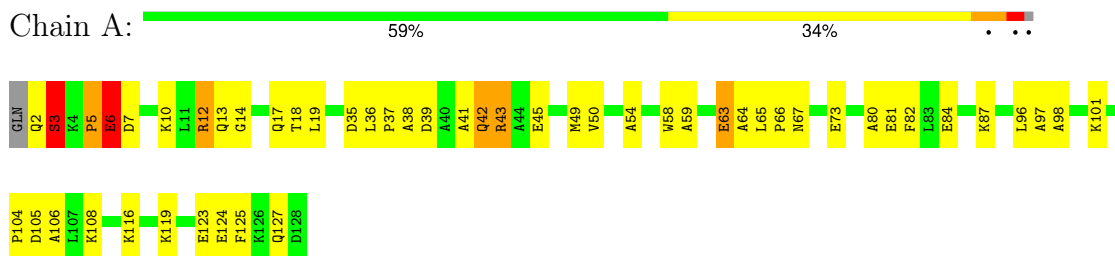
- Molecule 3 is water.

Mol	Chain	Residues	Atoms		ZeroOcc	AltConf
3	A	96	Total 96	O 96	0	0
3	B	98	Total 98	O 98	0	0

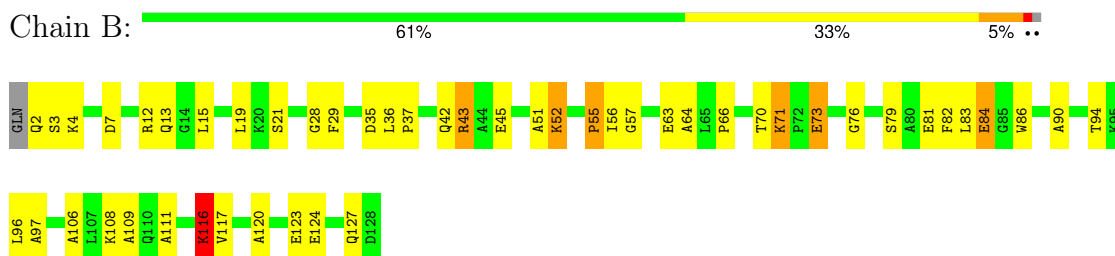
3 Residue-property plots [i](#)

These plots are drawn for all protein, RNA, DNA and oligosaccharide chains in the entry. The first graphic for a chain summarises the proportions of the various outlier classes displayed in the second graphic. The second graphic shows the sequence view annotated by issues in geometry. Residues are color-coded according to the number of geometric quality criteria for which they contain at least one outlier: green = 0, yellow = 1, orange = 2 and red = 3 or more. Stretches of 2 or more consecutive residues without any outlier are shown as a green connector. Residues present in the sample, but not in the model, are shown in grey.

- Molecule 1: CYTOCHROME C



- Molecule 1: CYTOCHROME C



4 Data and refinement statistics i

Property	Value	Source
Space group	P 21 21 21	Depositor
Cell constants a, b, c, α , β , γ	56.58Å 72.33Å 75.44Å 90.00° 90.00° 90.00°	Depositor
Resolution (Å)	(Not available) – 1.67 38.37 – 1.51	Depositor EDS
% Data completeness (in resolution range)	(Not available) ((Not available)-1.67) 93.2 (38.37-1.51)	Depositor EDS
R_{merge}	(Not available)	Depositor
R_{sym}	(Not available)	Depositor
$\langle I/\sigma(I) \rangle$ ¹	4.62 (at 1.50Å)	Xtrriage
Refinement program	PROLSQ	Depositor
R, R_{free}	(Not available) , (Not available) (Not available) , (Not available)	Depositor DCC
R_{free} test set	No test flags present.	wwPDB-VP
Wilson B-factor (Å ²)	12.2	Xtrriage
Anisotropy	0.362	Xtrriage
Bulk solvent k_{sol} (e/Å ³), B_{sol} (Å ²)	0.34 , 95.3	EDS
L-test for twinning ²	$\langle L \rangle = 0.49$, $\langle L^2 \rangle = 0.32$	Xtrriage
Estimated twinning fraction	0.015 for -h,l,k	Xtrriage
F_o, F_c correlation	0.96	EDS
Total number of atoms	2146	wwPDB-VP
Average B, all atoms (Å ²)	28.0	wwPDB-VP

Xtrriage's analysis on translational NCS is as follows: *The largest off-origin peak in the Patterson function is 7.96% of the height of the origin peak. No significant pseudotranslation is detected.*

¹Intensities estimated from amplitudes.

²Theoretical values of $\langle |L| \rangle$, $\langle L^2 \rangle$ for acentric reflections are 0.5, 0.333 respectively for untwinned datasets, and 0.375, 0.2 for perfectly twinned datasets.

5 Model quality [i](#)

5.1 Standard geometry [i](#)

Bond lengths and bond angles in the following residue types are not validated in this section: HEC

The Z score for a bond length (or angle) is the number of standard deviations the observed value is removed from the expected value. A bond length (or angle) with $|Z| > 5$ is considered an outlier worth inspection. RMSZ is the root-mean-square of all Z scores of the bond lengths (or angles).

Mol	Chain	Bond lengths		Bond angles	
		RMSZ	# Z >5	RMSZ	# Z >5
1	A	1.41	3/955 (0.3%)	2.25	43/1286 (3.3%)
1	B	1.63	7/955 (0.7%)	2.29	52/1286 (4.0%)
All	All	1.52	10/1910 (0.5%)	2.27	95/2572 (3.7%)

Chiral center outliers are detected by calculating the chiral volume of a chiral center and verifying if the center is modelled as a planar moiety or with the opposite hand. A planarity outlier is detected by checking planarity of atoms in a peptide group, atoms in a mainchain group or atoms of a sidechain that are expected to be planar.

Mol	Chain	#Chirality outliers	#Planarity outliers
1	A	0	3
1	B	0	4
All	All	0	7

All (10) bond length outliers are listed below:

Mol	Chain	Res	Type	Atoms	Z	Observed(Å)	Ideal(Å)
1	B	57	GLY	N-CA	9.07	1.59	1.46
1	A	123	GLU	CD-OE2	7.70	1.34	1.25
1	B	86	TRP	CD2-CE2	-6.91	1.33	1.41
1	B	12	ARG	CZ-NH2	6.61	1.41	1.33
1	B	79	SER	CA-CB	6.56	1.62	1.52
1	A	98	ALA	N-CA	5.69	1.57	1.46
1	B	55	PRO	N-CD	5.51	1.55	1.47
1	B	28	GLY	N-CA	5.38	1.54	1.46
1	B	12	ARG	C-O	5.28	1.33	1.23
1	A	50	VAL	N-CA	5.10	1.56	1.46

All (95) bond angle outliers are listed below:

Mol	Chain	Res	Type	Atoms	Z	Observed(°)	Ideal(°)
1	A	39	ASP	CB-CG-OD1	14.13	131.02	118.30
1	B	35	ASP	CB-CG-OD2	-13.19	106.42	118.30
1	A	97	ALA	O-C-N	10.68	139.79	122.70
1	B	86	TRP	CZ3-CH2-CZ2	10.38	134.06	121.60
1	A	7	ASP	CB-CG-OD2	-10.16	109.16	118.30
1	A	43	ARG	NE-CZ-NH2	-10.14	115.23	120.30
1	A	7	ASP	CB-CG-OD1	9.44	126.79	118.30
1	B	94	THR	CA-CB-CG2	-9.38	99.28	112.40
1	B	86	TRP	CG-CD2-CE3	-9.10	125.71	133.90
1	A	124	GLU	CA-CB-CG	8.96	133.12	113.40
1	B	106	ALA	N-CA-CB	-8.39	98.36	110.10
1	A	116	LYS	CA-CB-CG	8.21	131.47	113.40
1	A	58	TRP	CE3-CZ3-CH2	7.97	129.97	121.20
1	A	19	LEU	CB-CG-CD1	-7.89	97.58	111.00
1	B	86	TRP	CH2-CZ2-CE2	-7.79	109.61	117.40
1	A	105	ASP	CB-CG-OD1	-7.73	111.35	118.30
1	A	82	PHE	CB-CG-CD2	-7.67	115.43	120.80
1	B	124	GLU	CA-CB-CG	7.54	129.99	113.40
1	B	13	GLN	C-N-CA	7.51	138.08	122.30
1	B	63	GLU	OE1-CD-OE2	-7.37	114.45	123.30
1	A	42[A]	GLN	O-C-N	7.20	134.23	122.70
1	A	42[B]	GLN	O-C-N	7.20	134.23	122.70
1	B	51	ALA	CB-CA-C	7.20	120.89	110.10
1	A	43	ARG	NE-CZ-NH1	7.14	123.87	120.30
1	B	79	SER	N-CA-CB	-7.11	99.83	110.50
1	B	86	TRP	CE2-CD2-CE3	6.98	127.08	118.70
1	A	45	GLU	O-C-N	6.93	133.79	122.70
1	B	73	GLU	CA-CB-CG	6.86	128.50	113.40
1	A	59	ALA	O-C-N	6.75	133.50	122.70
1	B	83	LEU	CB-CA-C	6.74	123.00	110.20
1	A	81	GLU	OE1-CD-OE2	-6.54	115.45	123.30
1	B	82	PHE	CB-CG-CD1	-6.49	116.25	120.80
1	A	106	ALA	O-C-N	6.48	133.06	122.70
1	B	117	VAL	CA-CB-CG1	-6.48	101.18	110.90
1	A	17	GLN	O-C-N	6.36	132.88	122.70
1	B	73	GLU	OE1-CD-OE2	-6.29	115.76	123.30
1	A	58	TRP	CD2-CE3-CZ3	-6.27	110.65	118.80
1	B	86	TRP	CE3-CZ3-CH2	-6.25	114.32	121.20
1	A	64	ALA	N-CA-CB	-6.17	101.47	110.10
1	B	35	ASP	OD1-CG-OD2	6.16	135.00	123.30
1	A	54	ALA	CB-CA-C	6.12	119.28	110.10
1	B	123	GLU	OE1-CD-OE2	6.06	130.57	123.30
1	B	56	ILE	C-N-CA	-6.05	109.60	122.30

Continued on next page...

Continued from previous page...

Mol	Chain	Res	Type	Atoms	Z	Observed(°)	Ideal(°)
1	A	96	LEU	O-C-N	-6.04	113.04	122.70
1	A	17	GLN	CA-C-O	-6.01	107.49	120.10
1	B	43	ARG	CD-NE-CZ	5.85	131.79	123.60
1	B	45	GLU	CG-CD-OE2	-5.80	106.70	118.30
1	B	70	THR	N-CA-CB	-5.79	99.30	110.30
1	B	13	GLN	O-C-N	-5.79	113.36	123.20
1	B	52	LYS	CA-CB-CG	-5.76	100.73	113.40
1	B	43	ARG	CA-CB-CG	-5.72	100.81	113.40
1	A	63	GLU	CB-CG-CD	5.69	129.57	114.20
1	B	15	LEU	O-C-N	-5.68	113.61	122.70
1	B	94	THR	CA-CB-OG1	-5.63	97.17	109.00
1	A	38	ALA	N-CA-CB	-5.63	102.21	110.10
1	B	111	ALA	O-C-N	-5.62	113.70	122.70
1	B	73	GLU	CB-CA-C	-5.62	99.17	110.40
1	A	124	GLU	CG-CD-OE1	5.58	129.47	118.30
1	B	86	TRP	N-CA-CB	5.57	120.62	110.60
1	A	14	GLY	CA-C-O	-5.54	110.62	120.60
1	A	18	THR	CA-CB-CG2	-5.54	104.64	112.40
1	A	41	ALA	N-CA-CB	5.53	117.85	110.10
1	A	12	ARG	NE-CZ-NH2	-5.52	117.54	120.30
1	A	39	ASP	OD1-CG-OD2	-5.50	112.85	123.30
1	B	86	TRP	NE1-CE2-CD2	5.50	112.80	107.30
1	A	124	GLU	CG-CD-OE2	-5.50	107.31	118.30
1	B	45	GLU	CA-CB-CG	-5.49	101.31	113.40
1	B	56	ILE	CA-CB-CG1	-5.49	100.58	111.00
1	A	63	GLU	N-CA-CB	5.47	120.44	110.60
1	A	35	ASP	O-C-N	5.42	131.37	122.70
1	B	97	ALA	N-CA-CB	5.41	117.68	110.10
1	A	63	GLU	CA-CB-CG	5.41	125.30	113.40
1	B	71	LYS	CA-CB-CG	-5.40	101.52	113.40
1	B	70	THR	CA-CB-CG2	-5.36	104.89	112.40
1	A	73	GLU	CG-CD-OE1	5.35	129.00	118.30
1	B	19	LEU	CB-CG-CD1	-5.27	102.04	111.00
1	B	84	GLU	CG-CD-OE2	-5.26	107.77	118.30
1	A	10	LYS	CG-CD-CE	5.26	127.68	111.90
1	B	90	ALA	CB-CA-C	5.25	117.97	110.10
1	B	124	GLU	CG-CD-OE1	5.24	128.77	118.30
1	A	80	ALA	CB-CA-C	5.23	117.94	110.10
1	B	21	SER	N-CA-CB	5.23	118.34	110.50
1	B	73	GLU	CG-CD-OE1	5.21	128.73	118.30
1	B	96	LEU	CB-CG-CD2	-5.21	102.15	111.00
1	A	49	MET	O-C-N	5.18	131.00	122.70

Continued on next page...

Continued from previous page...

Mol	Chain	Res	Type	Atoms	Z	Observed(°)	Ideal(°)
1	A	6	GLU	N-CA-CB	5.15	119.88	110.60
1	B	76	GLY	CA-C-O	-5.15	111.33	120.60
1	B	116	LYS	CA-CB-CG	5.13	124.69	113.40
1	B	81	GLU	O-C-N	5.11	130.87	122.70
1	B	84	GLU	CG-CD-OE1	5.10	128.50	118.30
1	A	125	PHE	CG-CD1-CE1	5.09	126.40	120.80
1	A	50	VAL	O-C-N	-5.09	114.55	122.70
1	B	109	ALA	N-CA-CB	-5.08	102.99	110.10
1	B	124	GLU	CG-CD-OE2	-5.03	108.25	118.30
1	B	84	GLU	CA-CB-CG	5.00	124.40	113.40

There are no chirality outliers.

All (7) planarity outliers are listed below:

Mol	Chain	Res	Type	Group
1	A	12	ARG	Sidechain
1	A	13	GLN	Mainchain
1	A	43	ARG	Sidechain
1	B	116	LYS	Mainchain
1	B	120	ALA	Mainchain
1	B	43	ARG	Sidechain
1	B	55	PRO	Mainchain

5.2 Too-close contacts [i](#)

In the following table, the Non-H and H(model) columns list the number of non-hydrogen atoms and hydrogen atoms in the chain respectively. The H(added) column lists the number of hydrogen atoms added and optimized by MolProbity. The Clashes column lists the number of clashes within the asymmetric unit, whereas Symm-Clashes lists symmetry-related clashes.

Mol	Chain	Non-H	H(model)	H(added)	Clashes	Symm-Clashes
1	A	933	0	941	10	0
1	B	933	0	941	9	0
2	A	43	0	30	3	0
2	B	43	0	30	3	0
3	A	96	0	0	3	0
3	B	98	0	0	3	0
All	All	2146	0	1942	25	0

The all-atom clashscore is defined as the number of clashes found per 1000 atoms (including hydrogen atoms). The all-atom clashscore for this structure is 6.

All (25) close contacts within the same asymmetric unit are listed below, sorted by their clash magnitude.

Atom-1	Atom-2	Interatomic distance (Å)	Clash overlap (Å)
1:A:2:GLN:O	1:A:3:SER:HB2	1.82	0.78
1:A:127:GLN:O	3:A:232:HOH:O	2.04	0.73
2:A:129:HEC:HBC3	2:A:129:HEC:HMC1	1.80	0.63
1:A:66:PRO:O	1:A:67:ASN:HB2	1.98	0.63
2:B:129:HEC:HBC3	2:B:129:HEC:HMC1	1.84	0.59
1:B:71:LYS:HB3	1:B:73:GLU:OE2	2.05	0.57
1:B:52:LYS:NZ	3:B:519:HOH:O	2.40	0.55
1:A:5:PRO:HD2	1:A:6:GLU:OE1	2.09	0.52
1:B:64:ALA:N	3:B:317:HOH:O	2.44	0.49
2:A:129:HEC:HMC1	2:A:129:HEC:CBC	2.43	0.48
1:B:29:PHE:CE2	1:B:108:LYS:HG3	2.50	0.47
1:B:2:GLN:O	1:B:3:SER:HB2	2.16	0.45
2:B:129:HEC:HMC1	2:B:129:HEC:CBC	2.47	0.44
1:A:36:LEU:HA	1:A:37:PRO:HD3	1.87	0.44
1:A:101:LYS:NZ	3:A:227:HOH:O	2.50	0.44
2:B:129:HEC:HBB3	2:B:129:HEC:HMB1	1.99	0.44
1:B:36:LEU:HA	1:B:37:PRO:HD3	1.89	0.43
1:A:84:GLU:HG2	3:A:208:HOH:O	2.19	0.42
2:A:129:HEC:HBB3	2:A:129:HEC:HMB1	2.02	0.41
1:A:5:PRO:HB3	1:A:65:LEU:HD22	2.03	0.41
1:B:4:LYS:O	1:B:7:ASP:HB2	2.21	0.40
1:B:64:ALA:HB3	3:B:317:HOH:O	2.21	0.40
1:A:104:PRO:O	1:A:108:LYS:HG3	2.22	0.40

There are no symmetry-related clashes.

5.3 Torsion angles [\(i\)](#)

5.3.1 Protein backbone [\(i\)](#)

In the following table, the Percentiles column shows the percent Ramachandran outliers of the chain as a percentile score with respect to all X-ray entries followed by that with respect to entries of similar resolution.

The Analysed column shows the number of residues for which the backbone conformation was analysed, and the total number of residues.

Mol	Chain	Analysed	Favoured	Allowed	Outliers	Percentiles
1	A	126/128 (98%)	122 (97%)	3 (2%)	1 (1%)	19 6

Continued on next page...

Continued from previous page...

Mol	Chain	Analysed	Favoured	Allowed	Outliers	Percentiles	
1	B	126/128 (98%)	123 (98%)	3 (2%)	0	100	100
All	All	252/256 (98%)	245 (97%)	6 (2%)	1 (0%)	34	17

All (1) Ramachandran outliers are listed below:

Mol	Chain	Res	Type
1	A	3	SER

5.3.2 Protein sidechains [i](#)

In the following table, the Percentiles column shows the percent sidechain outliers of the chain as a percentile score with respect to all X-ray entries followed by that with respect to entries of similar resolution.

The Analysed column shows the number of residues for which the sidechain conformation was analysed, and the total number of residues.

Mol	Chain	Analysed	Rotameric	Outliers	Percentiles	
1	A	89/90 (99%)	83 (93%)	6 (7%)	16	3
1	B	89/90 (99%)	85 (96%)	4 (4%)	27	9
All	All	178/180 (99%)	168 (94%)	10 (6%)	20	6

All (10) residues with a non-rotameric sidechain are listed below:

Mol	Chain	Res	Type
1	A	3	SER
1	A	5	PRO
1	A	6	GLU
1	A	63	GLU
1	A	87	LYS
1	A	119	LYS
1	B	66	PRO
1	B	84	GLU
1	B	116	LYS
1	B	127	GLN

Sometimes sidechains can be flipped to improve hydrogen bonding and reduce clashes. All (1) such sidechains are listed below:

Mol	Chain	Res	Type
1	A	127	GLN

5.3.3 RNA [i](#)

There are no RNA molecules in this entry.

5.4 Non-standard residues in protein, DNA, RNA chains [i](#)

There are no non-standard protein/DNA/RNA residues in this entry.

5.5 Carbohydrates [i](#)

There are no monosaccharides in this entry.

5.6 Ligand geometry [i](#)

2 ligands are modelled in this entry.

In the following table, the Counts columns list the number of bonds (or angles) for which Mogul statistics could be retrieved, the number of bonds (or angles) that are observed in the model and the number of bonds (or angles) that are defined in the Chemical Component Dictionary. The Link column lists molecule types, if any, to which the group is linked. The Z score for a bond length (or angle) is the number of standard deviations the observed value is removed from the expected value. A bond length (or angle) with $|Z| > 2$ is considered an outlier worth inspection. RMSZ is the root-mean-square of all Z scores of the bond lengths (or angles).

Mol	Type	Chain	Res	Link	Bond lengths			Bond angles		
					Counts	RMSZ	# $ Z > 2$	Counts	RMSZ	# $ Z > 2$
2	HEC	B	129	1	32,50,50	2.62	12 (37%)	30,82,82	2.46	14 (46%)
2	HEC	A	129	1	32,50,50	2.02	14 (43%)	30,82,82	2.55	10 (33%)

In the following table, the Chirals column lists the number of chiral outliers, the number of chiral centers analysed, the number of these observed in the model and the number defined in the Chemical Component Dictionary. Similar counts are reported in the Torsion and Rings columns. '-' means no outliers of that kind were identified.

Mol	Type	Chain	Res	Link	Chirals	Torsions	Rings
2	HEC	B	129	1	-	4/10/54/54	-
2	HEC	A	129	1	-	4/10/54/54	-

All (26) bond length outliers are listed below:

Mol	Chain	Res	Type	Atoms	Z	Observed(Å)	Ideal(Å)
2	B	129	HEC	C3C-C2C	-9.83	1.29	1.40
2	A	129	HEC	C2B-C3B	-6.27	1.33	1.40
2	B	129	HEC	C4D-ND	4.56	1.45	1.36
2	B	129	HEC	C1D-ND	4.41	1.45	1.36
2	B	129	HEC	CMC-C2C	3.84	1.60	1.51
2	A	129	HEC	CAA-C2A	3.02	1.57	1.52
2	B	129	HEC	C2A-C1A	2.82	1.48	1.42
2	A	129	HEC	C4B-C3B	2.76	1.48	1.43
2	A	129	HEC	C3C-C4C	2.72	1.48	1.43
2	B	129	HEC	C1B-NB	2.69	1.41	1.36
2	B	129	HEC	C4B-C3B	-2.62	1.38	1.43
2	A	129	HEC	O1A-CGA	2.62	1.30	1.22
2	B	129	HEC	O2A-CGA	-2.56	1.22	1.30
2	B	129	HEC	C2A-C3A	-2.52	1.30	1.37
2	B	129	HEC	C3A-C4A	2.51	1.48	1.42
2	B	129	HEC	CMA-C3A	2.46	1.57	1.51
2	A	129	HEC	CMD-C2D	2.45	1.56	1.51
2	A	129	HEC	C3C-C2C	-2.31	1.38	1.40
2	A	129	HEC	O2A-CGA	-2.29	1.23	1.30
2	A	129	HEC	CAD-C3D	2.25	1.57	1.52
2	A	129	HEC	C3D-C2D	-2.24	1.31	1.37
2	A	129	HEC	CBB-CAB	-2.12	1.41	1.49
2	A	129	HEC	CMA-C3A	2.09	1.56	1.51
2	A	129	HEC	CBC-CAC	-2.07	1.41	1.49
2	B	129	HEC	CMD-C2D	2.06	1.55	1.51
2	A	129	HEC	O2D-CGD	-2.04	1.24	1.30

All (24) bond angle outliers are listed below:

Mol	Chain	Res	Type	Atoms	Z	Observed(°)	Ideal(°)
2	A	129	HEC	CMD-C2D-C1D	-6.43	119.03	128.46
2	B	129	HEC	CBC-CAC-C3C	-4.96	115.89	127.49
2	B	129	HEC	CBB-CAB-C3B	-4.89	116.05	127.49
2	A	129	HEC	CMB-C2B-C3B	4.85	131.52	125.82
2	A	129	HEC	CBB-CAB-C3B	-4.64	116.62	127.49
2	A	129	HEC	CMB-C2B-C1B	-4.42	121.98	128.46
2	B	129	HEC	CMC-C2C-C1C	-4.36	122.07	128.46
2	B	129	HEC	CAD-CBD-CGD	3.94	124.44	113.83
2	A	129	HEC	CMD-C2D-C3D	3.87	132.23	124.94
2	A	129	HEC	O1A-CGA-CBA	-3.86	110.86	123.09
2	A	129	HEC	O2A-CGA-CBA	3.79	125.97	114.00
2	B	129	HEC	C3C-C4C-NC	-3.61	104.13	110.94

Continued on next page...

Continued from previous page...

Mol	Chain	Res	Type	Atoms	Z	Observed(°)	Ideal(°)
2	B	129	HEC	C1D-C2D-C3D	-3.41	104.63	107.00
2	B	129	HEC	C4C-C3C-C2C	2.96	109.55	106.35
2	B	129	HEC	CMA-C3A-C2A	2.90	130.42	124.94
2	B	129	HEC	O1A-CGA-CBA	-2.83	114.13	123.09
2	A	129	HEC	CMC-C2C-C3C	-2.70	122.65	125.82
2	A	129	HEC	C4C-C3C-C2C	-2.50	103.65	106.35
2	B	129	HEC	CAD-C3D-C2D	-2.21	120.89	127.25
2	B	129	HEC	O1D-CGD-CBD	2.19	130.03	123.09
2	A	129	HEC	C1D-C2D-C3D	2.17	108.51	107.00
2	B	129	HEC	CMC-C2C-C3C	2.06	128.25	125.82
2	B	129	HEC	CMD-C2D-C3D	2.06	128.82	124.94
2	B	129	HEC	CAA-CBA-CGA	-2.04	108.35	113.83

There are no chirality outliers.

All (8) torsion outliers are listed below:

Mol	Chain	Res	Type	Atoms
2	A	129	HEC	CAA-CBA-CGA-O2A
2	A	129	HEC	CAD-CBD-CGD-O1D
2	A	129	HEC	CAD-CBD-CGD-O2D
2	B	129	HEC	CAA-CBA-CGA-O2A
2	B	129	HEC	CAD-CBD-CGD-O2D
2	B	129	HEC	CAA-CBA-CGA-O1A
2	B	129	HEC	CAD-CBD-CGD-O1D
2	A	129	HEC	CAA-CBA-CGA-O1A

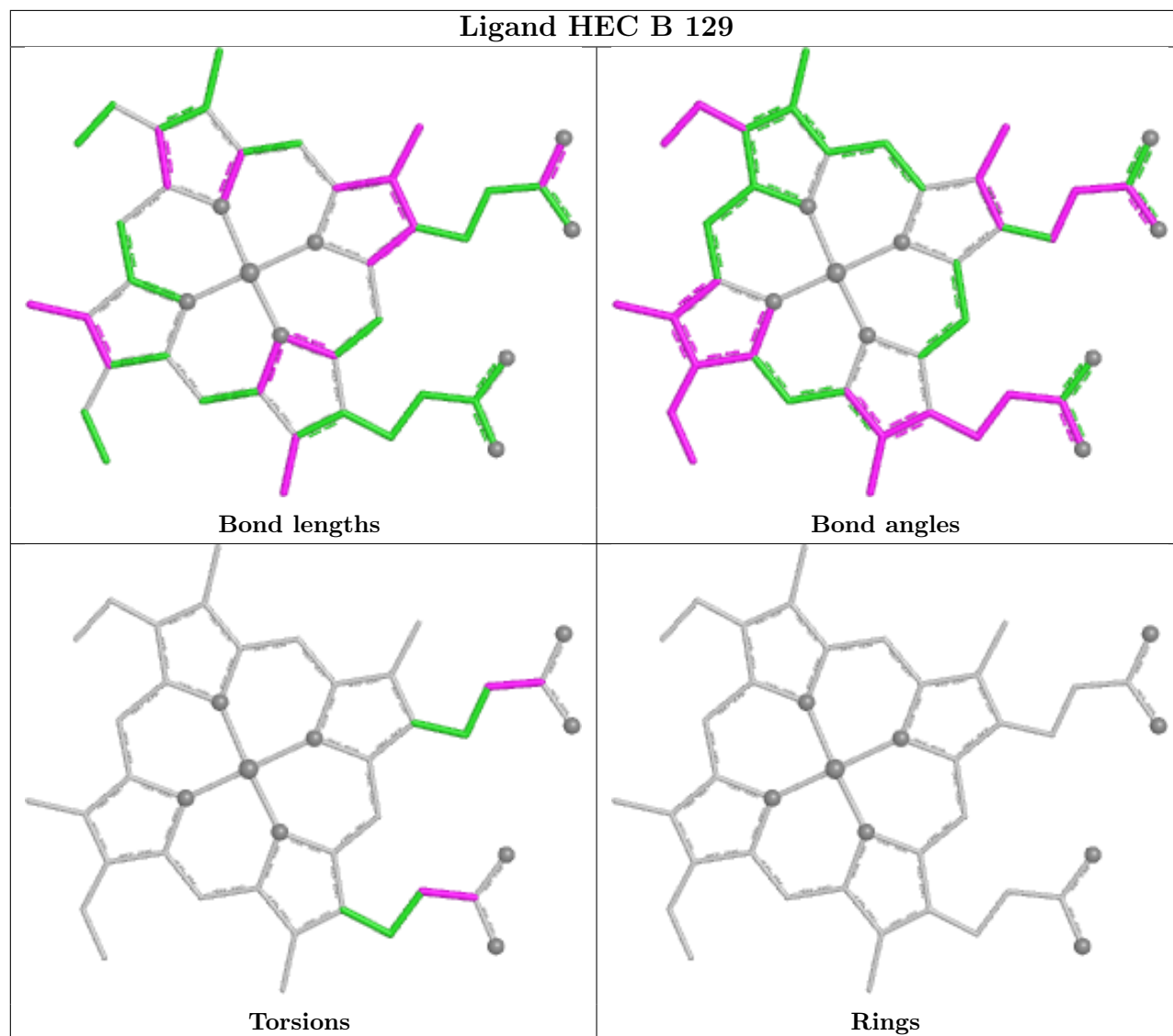
There are no ring outliers.

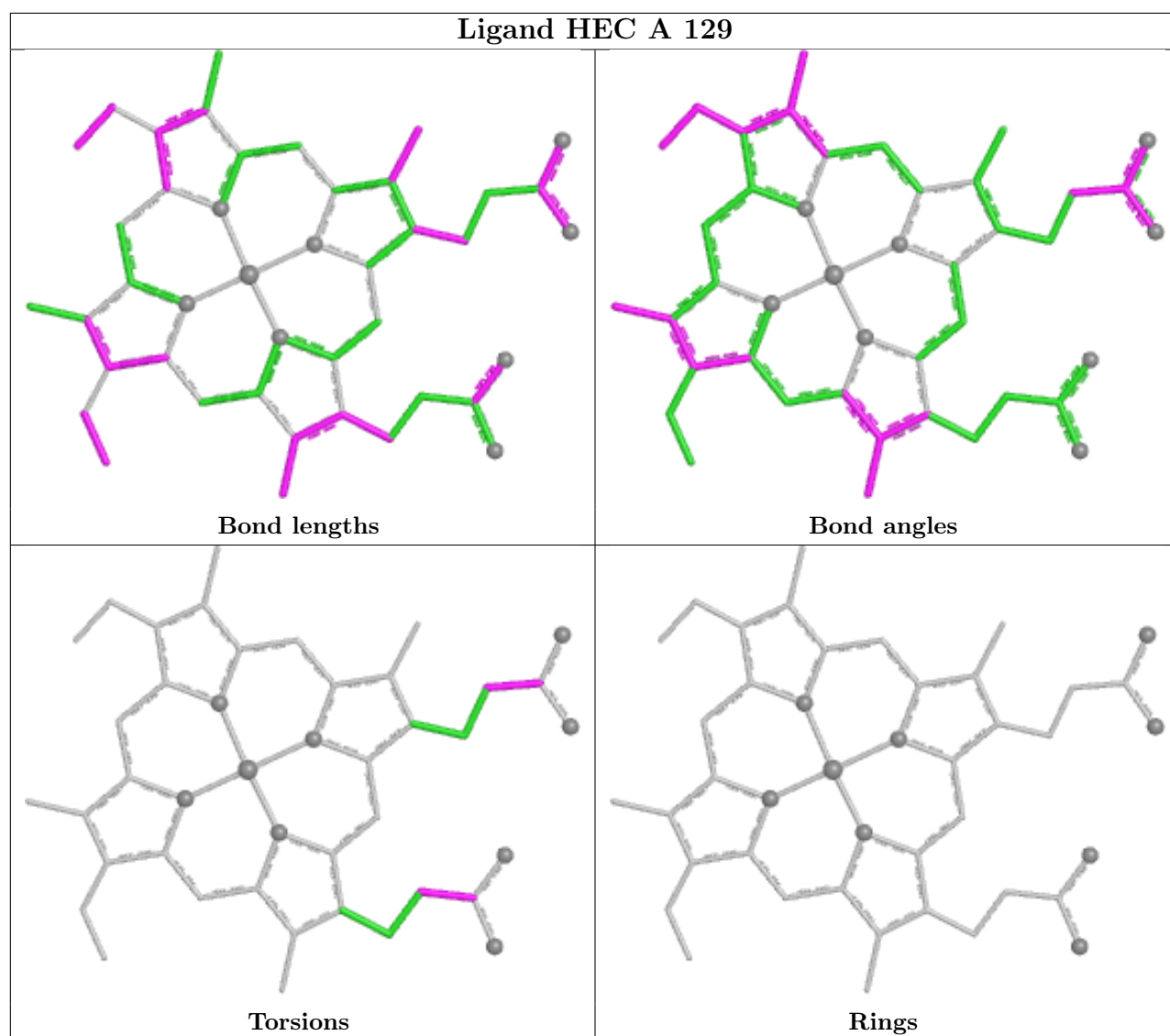
2 monomers are involved in 6 short contacts:

Mol	Chain	Res	Type	Clashes	Symm-Clashes
2	B	129	HEC	3	0
2	A	129	HEC	3	0

The following is a two-dimensional graphical depiction of Mogul quality analysis of bond lengths, bond angles, torsion angles, and ring geometry for all instances of the Ligand of Interest. In addition, ligands with molecular weight > 250 and outliers as shown on the validation Tables will also be included. For torsion angles, if less than 5% of the Mogul distribution of torsion angles is within 10 degrees of the torsion angle in question, then that torsion angle is considered an outlier. Any bond that is central to one or more torsion angles identified as an outlier by Mogul will be highlighted in the graph. For rings, the root-mean-square deviation (RMSD) between the ring in question and similar rings identified by Mogul is calculated over all ring torsion angles. If the average RMSD is greater than 60 degrees and the minimal RMSD between the ring in question and

any Mogul-identified rings is also greater than 60 degrees, then that ring is considered an outlier. The outliers are highlighted in purple. The color gray indicates Mogul did not find sufficient equivalents in the CSD to analyse the geometry.





5.7 Other polymers [\(i\)](#)

There are no such residues in this entry.

5.8 Polymer linkage issues [\(i\)](#)

There are no chain breaks in this entry.

6 Fit of model and data

6.1 Protein, DNA and RNA chains

Unable to reproduce the depositors R factor - this section is therefore empty.

6.2 Non-standard residues in protein, DNA, RNA chains

Unable to reproduce the depositors R factor - this section is therefore empty.

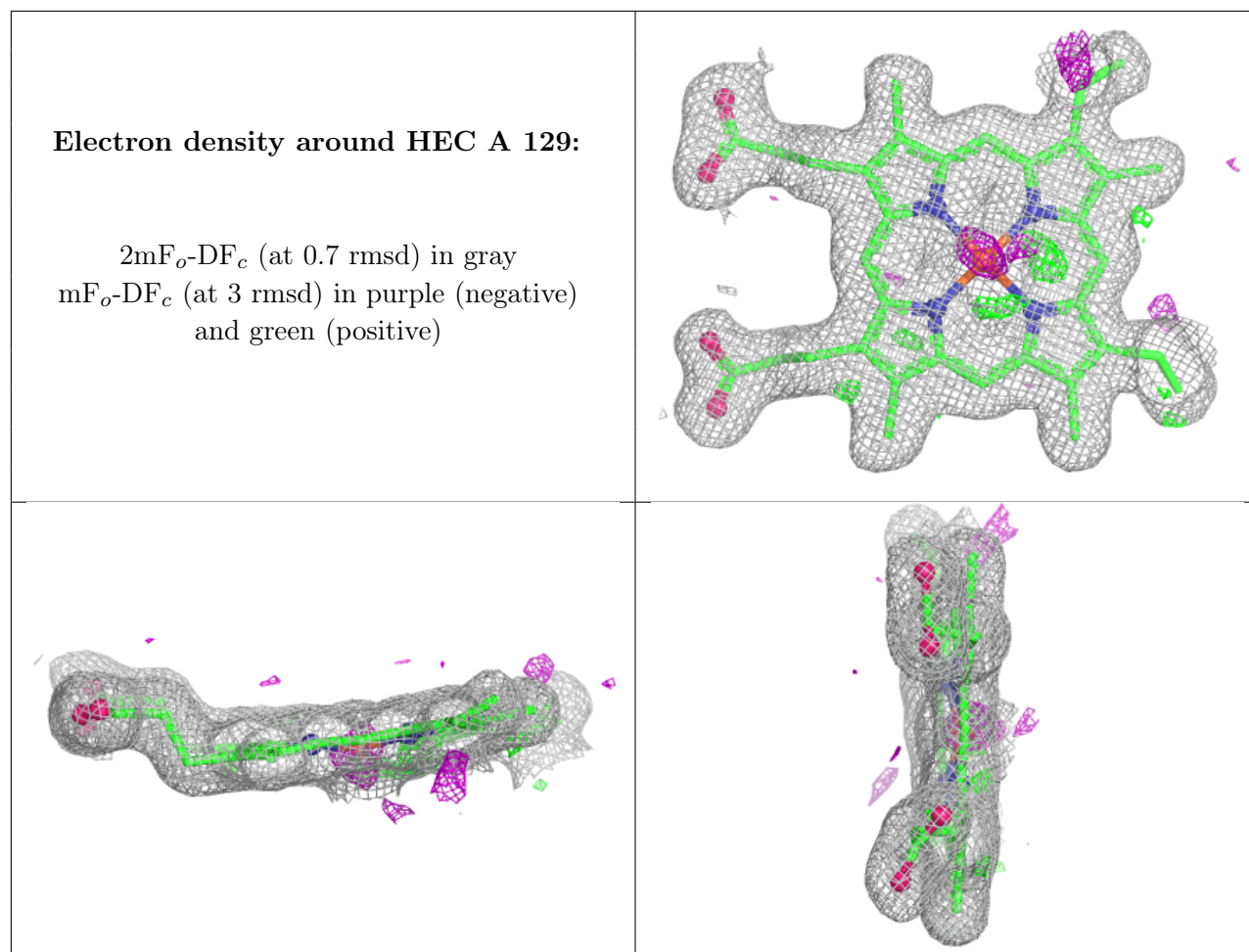
6.3 Carbohydrates

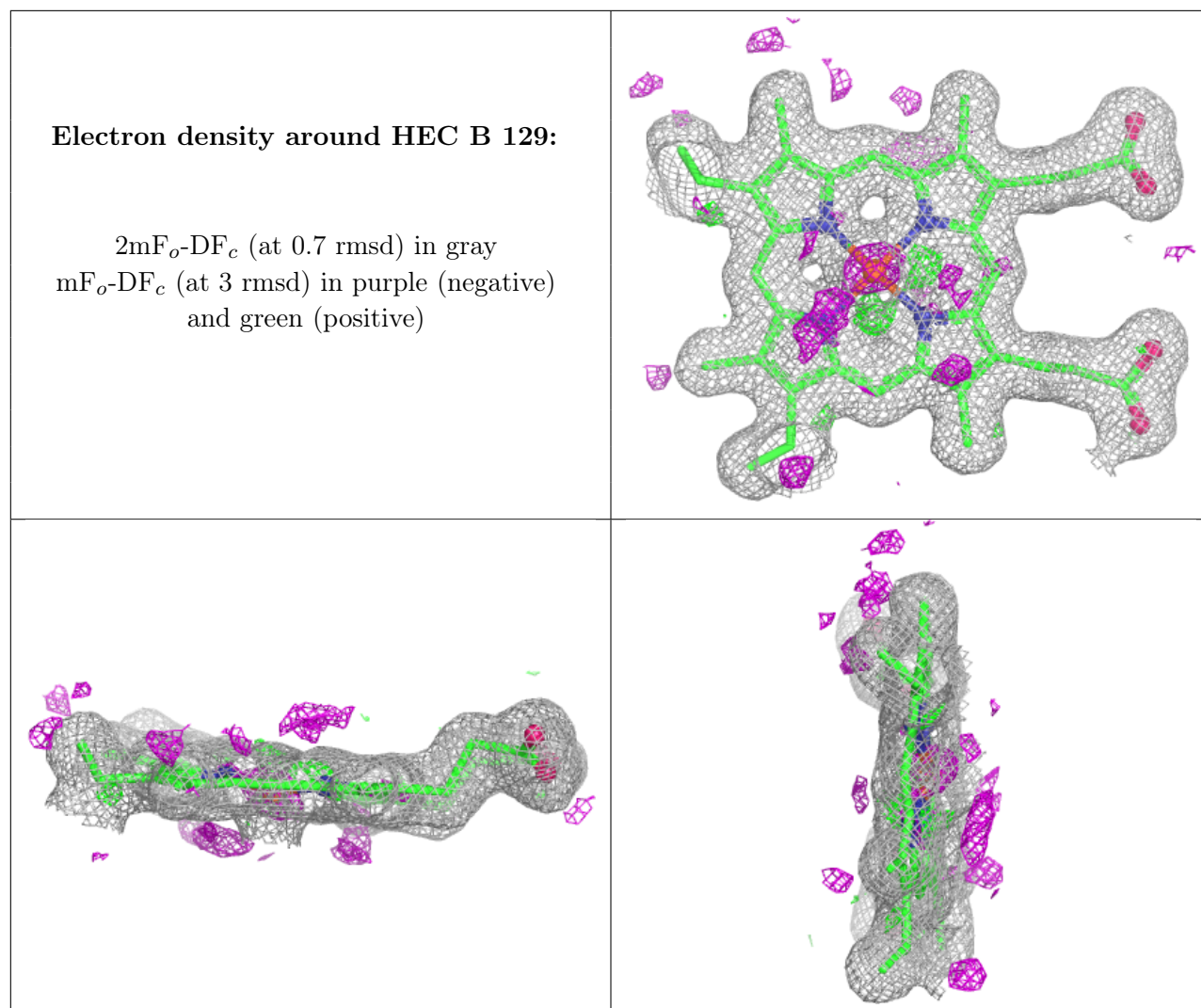
Unable to reproduce the depositors R factor - this section is therefore empty.

6.4 Ligands

Unable to reproduce the depositors R factor - this section is therefore empty.

The following is a graphical depiction of the model fit to experimental electron density of all instances of the Ligand of Interest. In addition, ligands with molecular weight > 250 and outliers as shown on the geometry validation Tables will also be included. Each fit is shown from different orientation to approximate a three-dimensional view.





6.5 Other polymers [i](#)

Unable to reproduce the depositor's R factor - this section is therefore empty.