



# wwPDB EM Validation Summary Report ⓘ

Mar 4, 2026 – 11:39 PM UTC

PDB ID : 9CC7 / pdb\_00009cc7  
EMDB ID : EMD-45435  
Title : Bacteriophage PhiTE extended connector complex  
Authors : Hodgkinson-Bean, J.; Ayala, R.  
Deposited on : 2024-06-20  
Resolution : 3.14 Å(reported)

This is a wwPDB EM Validation Summary Report for a publicly released PDB entry.

We welcome your comments at [validation@mail.wwpdb.org](mailto:validation@mail.wwpdb.org)

A user guide is available at

<https://www.wwpdb.org/validation/2017/EMValidationReportHelp>

with specific help available everywhere you see the ⓘ symbol.

The types of validation reports are described at

<http://www.wwpdb.org/validation/2017/FAQs#types>.

---

The following versions of software and data (see [references ⓘ](#)) were used in the production of this report:

EMDB validation analysis : 0.0.1.dev132  
MolProbity : 4-5-2 with Phenix2.0  
Percentile statistics : 20250101.v01 (using entries in the PDB archive January 1st 2025)  
EM percentile statistics : 202505.v01 (Using data in the EMDB archive up until May 2025)  
MapQ : 1.9.13  
Ideal geometry (proteins) : Engh & Huber (2001)  
Ideal geometry (DNA, RNA) : Parkinson et al. (1996)  
Validation Pipeline (wwPDB-VP) : 2.49

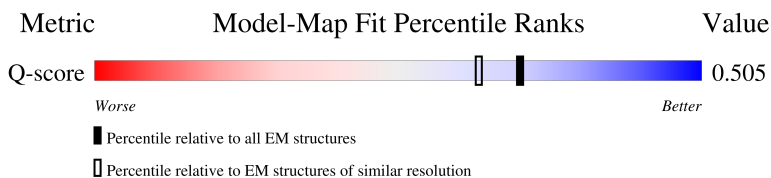
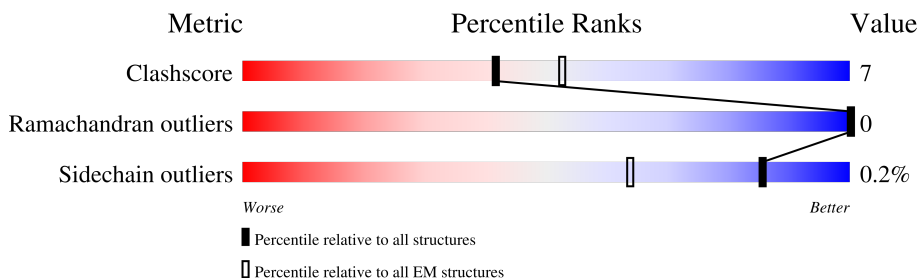
# 1 Overall quality at a glance

The following experimental techniques were used to determine the structure:

*ELECTRON MICROSCOPY*

The reported resolution of this entry is 3.14 Å.

Percentile scores (ranging between 0-100) for global validation metrics of the entry are shown in the following graphic. The table shows the number of entries on which the scores are based.





Metric	Whole archive (#Entries)	EM structures (#Entries)	Similar EM resolution (#Entries, resolution range(Å))
Clashscore	229148	23984	-
Ramachandran outliers	224038	23583	-
Sidechain outliers	223484	23102	-
Q-score	-	25397	14483 ( 2.64 - 3.64 )

The table below summarises the geometric issues observed across the polymeric chains and their fit to the map. The red, orange, yellow and green segments of the bar indicate the fraction of residues that contain outliers for  $\geq 3$ , 2, 1 and 0 types of geometric quality criteria respectively. A grey segment represents the fraction of residues that are not modelled. The numeric value for each fraction is indicated below the corresponding segment, with a dot representing fractions  $\leq 5\%$ . The upper red bar (where present) indicates the fraction of residues that have poor fit to the EM map (all-atom inclusion  $< 40\%$ ). The numeric value is given above the bar.

Mol	Chain	Length	Quality of chain
1	C	175	 78% 13% 9%
1	D	175	 74% 17% 9%
2	E	146	 63% 34% .
3	F	235	 78% 13% 9%

Continued on next page...

*Continued from previous page...*

Mol	Chain	Length	Quality of chain
4	G	160	
4	H	160	
5	I	473	
5	J	473	
6	A	507	 
6	B	507	 

## 2 Entry composition [i](#)

There are 6 unique types of molecules in this entry. The entry contains 20196 atoms, of which 0 are hydrogens and 0 are deuteriums.

In the tables below, the AltConf column contains the number of residues with at least one atom in alternate conformation and the Trace column contains the number of residues modelled with at most 2 atoms.

- Molecule 1 is a protein called PhiTE adaptor protein.

Mol	Chain	Residues	Atoms					AltConf	Trace
1	D	160	Total	C	N	O	S	0	0
			1298	840	209	246	3		
1	C	160	Total	C	N	O	S	0	0
			1298	840	209	246	3		

- Molecule 2 is a protein called PhiTE head completion protein.

Mol	Chain	Residues	Atoms					AltConf	Trace
2	E	142	Total	C	N	O	S	0	0
			1130	710	196	217	7		

- Molecule 3 is a protein called PhiTE tail terminator protein.

Mol	Chain	Residues	Atoms					AltConf	Trace
3	F	215	Total	C	N	O	S	0	0
			1661	1062	274	319	6		

- Molecule 4 is a protein called Tail tube protein.

Mol	Chain	Residues	Atoms					AltConf	Trace
4	G	141	Total	C	N	O	S	0	0
			1079	680	186	211	2		
4	H	147	Total	C	N	O	S	0	0
			1124	707	195	220	2		

- Molecule 5 is a protein called Tail sheath protein.

Mol	Chain	Residues	Atoms					AltConf	Trace
5	I	437	Total	C	N	O	S	0	0
			3275	2065	559	638	13		
5	J	436	Total	C	N	O	S	0	0
			3263	2061	557	631	14		

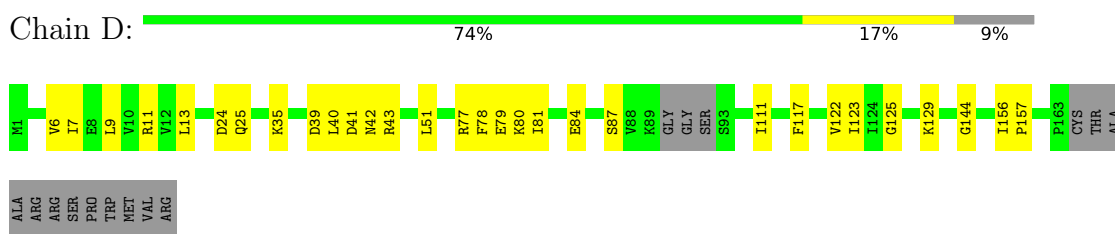
- Molecule 6 is a protein called Portal protein.

Mol	Chain	Residues	Atoms					AltConf	Trace
6	A	392	Total	C	N	O	S	0	0
			3034	1921	516	579	18		
6	B	392	Total	C	N	O	S	0	0
			3034	1921	516	579	18		

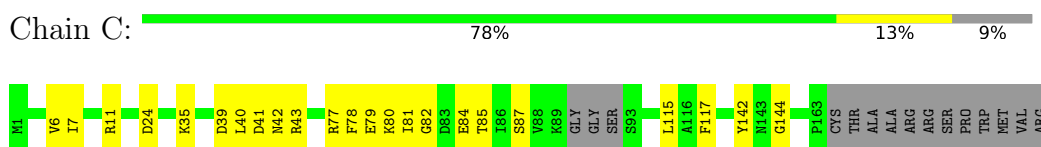
### 3 Residue-property plots [i](#)

These plots are drawn for all protein, RNA, DNA and oligosaccharide chains in the entry. The first graphic for a chain summarises the proportions of the various outlier classes displayed in the second graphic. The second graphic shows the sequence view annotated by issues in geometry and atom inclusion in map density. Residues are color-coded according to the number of geometric quality criteria for which they contain at least one outlier: green = 0, yellow = 1, orange = 2 and red = 3 or more. A red diamond above a residue indicates a poor fit to the EM map for this residue (all-atom inclusion < 40%). Stretches of 2 or more consecutive residues without any outlier are shown as a green connector. Residues present in the sample, but not in the model, are shown in grey.

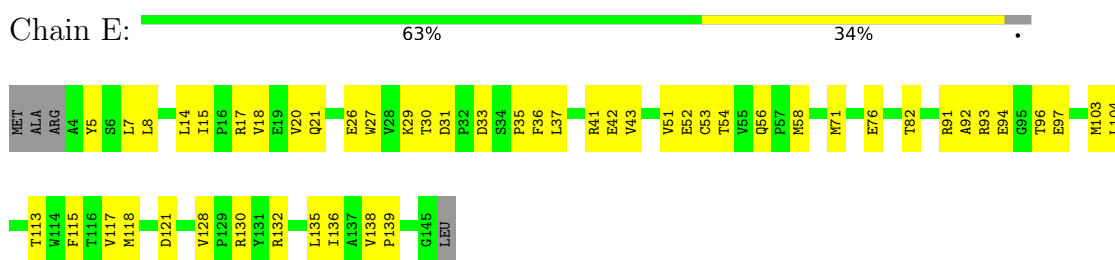
- Molecule 1: PhiTE adaptor protein



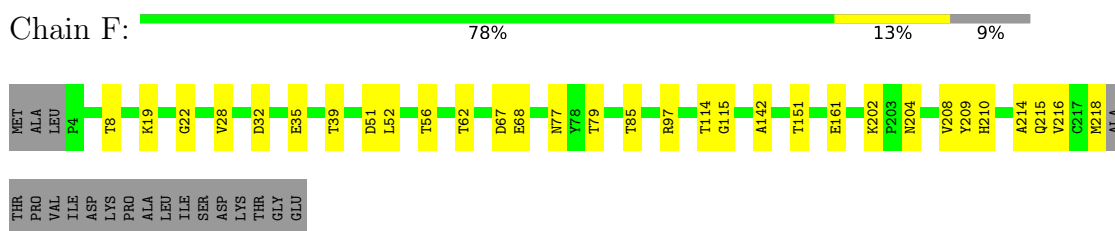
- Molecule 1: PhiTE adaptor protein



- Molecule 2: PhiTE head completion protein

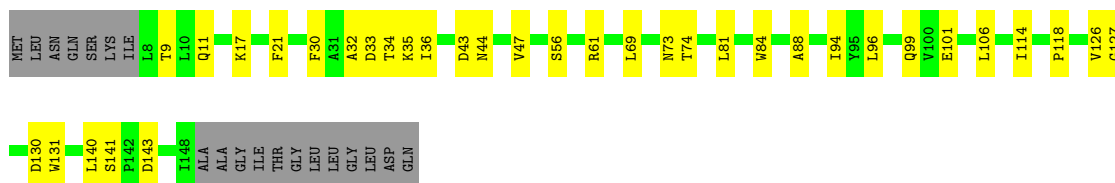


- Molecule 3: PhiTE tail terminator protein




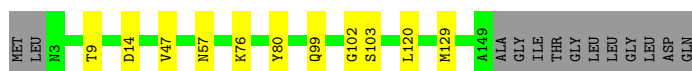
- Molecule 4: Tail tube protein

Chain G:  66% 22% 12%




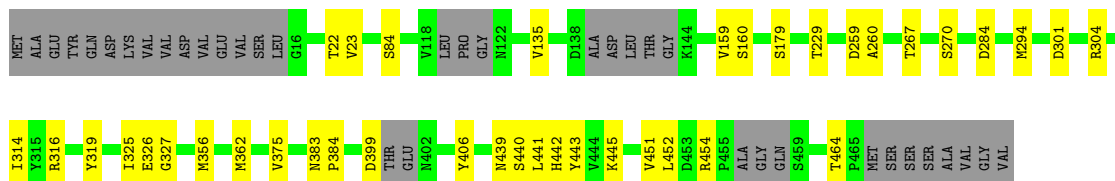
• Molecule 4: Tail tube protein

Chain H:  85% 7% 8%




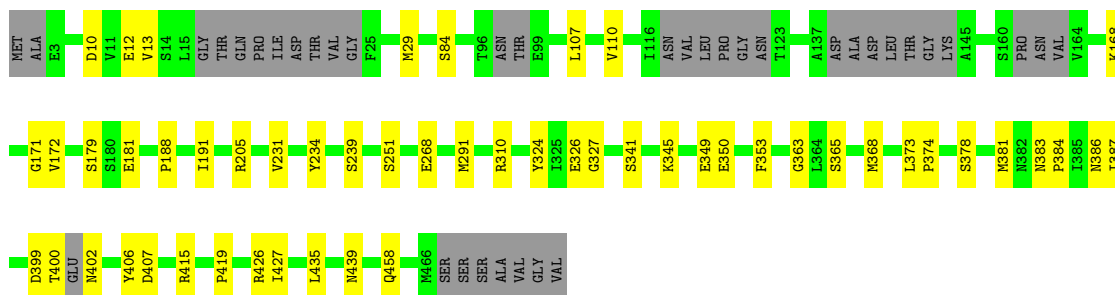
• Molecule 5: Tail sheath protein

Chain I:  84% 8% 8%



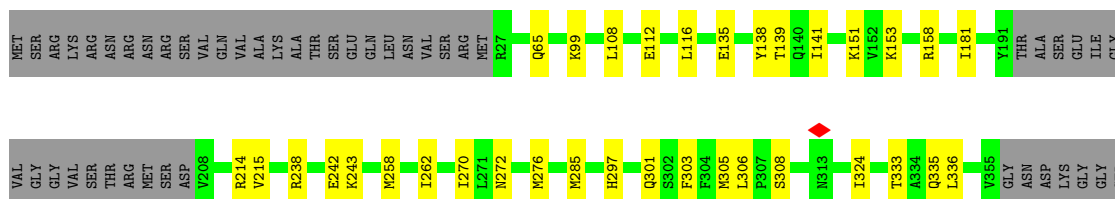
• Molecule 5: Tail sheath protein

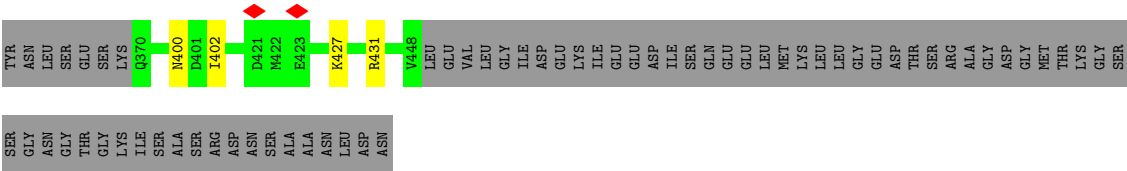
Chain J:  81% 11% 8%



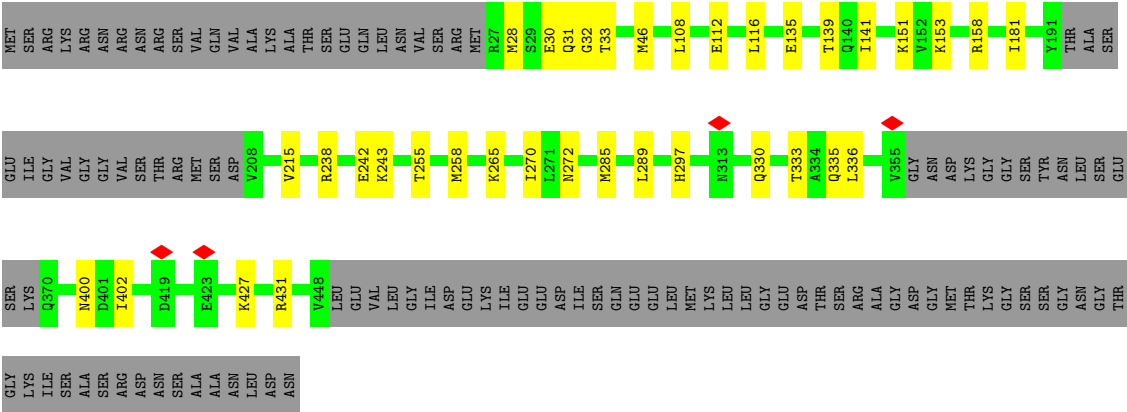
• Molecule 6: Portal protein

Chain A:  70% 7% 23%





● Molecule 6: Portal protein



## 4 Experimental information

Property	Value	Source
EM reconstruction method	SINGLE PARTICLE	Depositor
Imposed symmetry	POINT, Not provided	
Number of particles used	14858	Depositor
Resolution determination method	FSC 0.143 CUT-OFF	Depositor
CTF correction method	PHASE FLIPPING AND AMPLITUDE CORRECTION	Depositor
Microscope	FEI TITAN KRIOS	Depositor
Voltage (kV)	300	Depositor
Electron dose ( $e^-/\text{\AA}^2$ )	50	Depositor
Minimum defocus (nm)	1000	Depositor
Maximum defocus (nm)	4000	Depositor
Magnification	Not provided	
Image detector	FEI FALCON III (4k x 4k)	Depositor
Maximum map value	31.771	Depositor
Minimum map value	-15.407	Depositor
Average map value	0.009	Depositor
Map value standard deviation	1.112	Depositor
Recommended contour level	3.65	Depositor
Map size ( $\text{\AA}$ )	654.664, 654.664, 654.664	wwPDB
Map dimensions	472, 472, 472	wwPDB
Map angles ( $^\circ$ )	90.0, 90.0, 90.0	wwPDB
Pixel spacing ( $\text{\AA}$ )	1.387, 1.387, 1.387	Depositor

## 5 Model quality [i](#)

### 5.1 Standard geometry [i](#)

The Z score for a bond length (or angle) is the number of standard deviations the observed value is removed from the expected value. A bond length (or angle) with  $|Z| > 5$  is considered an outlier worth inspection. RMSZ is the root-mean-square of all Z scores of the bond lengths (or angles).

Mol	Chain	Bond lengths		Bond angles	
		RMSZ	$\# Z  > 5$	RMSZ	$\# Z  > 5$
1	C	0.13	0/1332	0.37	0/1815
1	D	0.13	0/1332	0.39	0/1815
2	E	0.27	0/1156	0.45	0/1567
3	F	0.26	0/1708	0.40	0/2339
4	G	0.31	0/1099	0.40	0/1499
4	H	0.29	0/1144	0.38	0/1559
5	I	0.17	0/3337	0.32	0/4540
5	J	0.17	0/3322	0.41	0/4514
6	A	0.33	0/3081	0.61	0/4153
6	B	0.33	0/3081	0.61	0/4153
All	All	0.25	0/20592	0.46	0/27954

There are no bond length outliers.

There are no bond angle outliers.

There are no chirality outliers.

There are no planarity outliers.

### 5.2 Too-close contacts [i](#)

In the following table, the Non-H and H(model) columns list the number of non-hydrogen atoms and hydrogen atoms in the chain respectively. The H(added) column lists the number of hydrogen atoms added and optimized by MolProbity. The Clashes column lists the number of clashes within the asymmetric unit, whereas Symm-Clashes lists symmetry-related clashes.

Mol	Chain	Non-H	H(model)	H(added)	Clashes	Symm-Clashes
1	C	1298	0	1265	28	0
1	D	1298	0	1265	43	0
2	E	1130	0	1096	67	0
3	F	1661	0	1614	31	0
4	G	1079	0	1055	27	0
4	H	1124	0	1103	9	0

*Continued on next page...*

*Continued from previous page...*

Mol	Chain	Non-H	H(model)	H(added)	Clashes	Symm-Clashes
5	I	3275	0	3189	51	0
5	J	3263	0	3183	59	0
6	A	3034	0	3083	40	0
6	B	3034	0	3083	29	0
All	All	20196	0	19936	271	0

The all-atom clashscore is defined as the number of clashes found per 1000 atoms (including hydrogen atoms). The all-atom clashscore for this structure is 7.

The worst 5 of 271 close contacts within the same asymmetric unit are listed below, sorted by their clash magnitude.

Atom-1	Atom-2	Interatomic distance (Å)	Clash overlap (Å)
5:I:443:TYR:HB2	5:J:427:ILE:CG2	1.64	1.26
1:D:81:ILE:HD13	2:E:128:VAL:CG2	1.73	1.17
1:D:81:ILE:CD1	2:E:128:VAL:HG21	1.75	1.17
5:I:314:ILE:HG13	5:I:325:ILE:HD12	1.29	1.09
1:D:81:ILE:HG12	2:E:8:LEU:HD13	1.34	1.07

There are no symmetry-related clashes.

## 5.3 Torsion angles ⓘ

### 5.3.1 Protein backbone ⓘ

In the following table, the Percentiles column shows the percent Ramachandran outliers of the chain as a percentile score with respect to all PDB entries followed by that with respect to all EM entries.

The Analysed column shows the number of residues for which the backbone conformation was analysed, and the total number of residues.

Mol	Chain	Analysed	Favoured	Allowed	Outliers	Percentiles	
1	C	156/175 (89%)	147 (94%)	9 (6%)	0	100	100
1	D	156/175 (89%)	149 (96%)	7 (4%)	0	100	100
2	E	140/146 (96%)	137 (98%)	3 (2%)	0	100	100
3	F	213/235 (91%)	206 (97%)	7 (3%)	0	100	100
4	G	139/160 (87%)	131 (94%)	8 (6%)	0	100	100
4	H	145/160 (91%)	136 (94%)	9 (6%)	0	100	100

*Continued on next page...*

*Continued from previous page...*

Mol	Chain	Analysed	Favoured	Allowed	Outliers	Percentiles	
5	I	427/473 (90%)	408 (96%)	19 (4%)	0	100	100
5	J	422/473 (89%)	405 (96%)	17 (4%)	0	100	100
6	A	386/507 (76%)	369 (96%)	17 (4%)	0	100	100
6	B	386/507 (76%)	369 (96%)	17 (4%)	0	100	100
All	All	2570/3011 (85%)	2457 (96%)	113 (4%)	0	100	100

There are no Ramachandran outliers to report.

### 5.3.2 Protein sidechains ⓘ

In the following table, the Percentiles column shows the percent sidechain outliers of the chain as a percentile score with respect to all PDB entries followed by that with respect to all EM entries.

The Analysed column shows the number of residues for which the sidechain conformation was analysed, and the total number of residues.

Mol	Chain	Analysed	Rotameric	Outliers	Percentiles	
1	C	145/158 (92%)	145 (100%)	0	100	100
1	D	145/158 (92%)	145 (100%)	0	100	100
2	E	123/126 (98%)	123 (100%)	0	100	100
3	F	182/198 (92%)	182 (100%)	0	100	100
4	G	115/130 (88%)	115 (100%)	0	100	100
4	H	120/130 (92%)	120 (100%)	0	100	100
5	I	345/384 (90%)	343 (99%)	2 (1%)	78	80
5	J	342/384 (89%)	341 (100%)	1 (0%)	86	85
6	A	330/424 (78%)	329 (100%)	1 (0%)	86	85
6	B	330/424 (78%)	329 (100%)	1 (0%)	86	85
All	All	2177/2516 (86%)	2172 (100%)	5 (0%)	85	87

All (5) residues with a non-rotameric sidechain are listed below:

Mol	Chain	Res	Type
5	I	362	MET
5	I	464	THR
5	J	234	TYR
6	A	243	LYS

*Continued on next page...*

*Continued from previous page...*

Mol	Chain	Res	Type
6	B	243	LYS

Sometimes sidechains can be flipped to improve hydrogen bonding and reduce clashes. 5 of 11 such sidechains are listed below:

Mol	Chain	Res	Type
6	A	395	GLN
6	B	110	ASN
6	B	395	GLN
6	B	330	GLN
1	C	140	ASN

### 5.3.3 RNA [i](#)

There are no RNA molecules in this entry.

## 5.4 Non-standard residues in protein, DNA, RNA chains [i](#)

There are no non-standard protein/DNA/RNA residues in this entry.

## 5.5 Carbohydrates [i](#)

There are no oligosaccharides in this entry.

## 5.6 Ligand geometry [i](#)

There are no ligands in this entry.

## 5.7 Other polymers [i](#)

There are no such residues in this entry.

## 5.8 Polymer linkage issues [i](#)

There are no chain breaks in this entry.

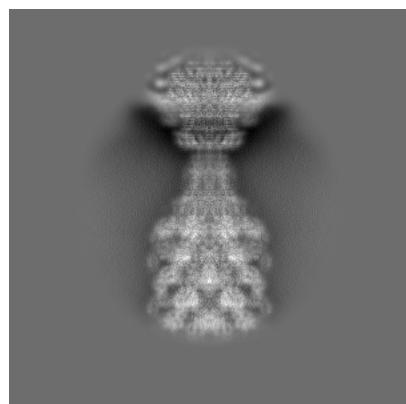
## 6 Map visualisation [i](#)

This section contains visualisations of the EMDB entry EMD-45435. These allow visual inspection of the internal detail of the map and identification of artifacts.

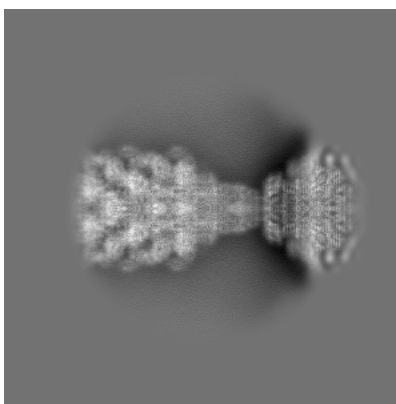
Images derived from a raw map, generated by summing the deposited half-maps, are presented below the corresponding image components of the primary map to allow further visual inspection and comparison with those of the primary map.

### 6.1 Orthogonal projections [i](#)

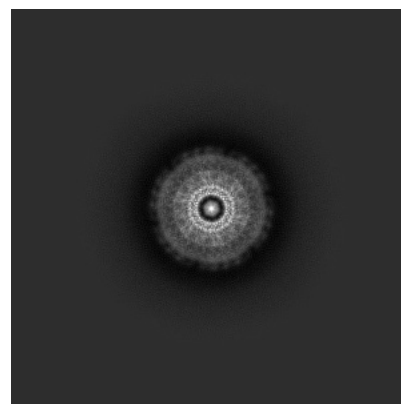
#### 6.1.1 Primary map



X

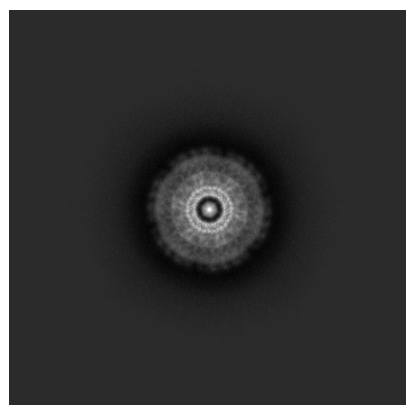


Y

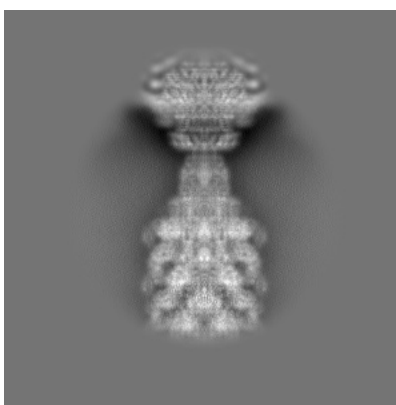


Z

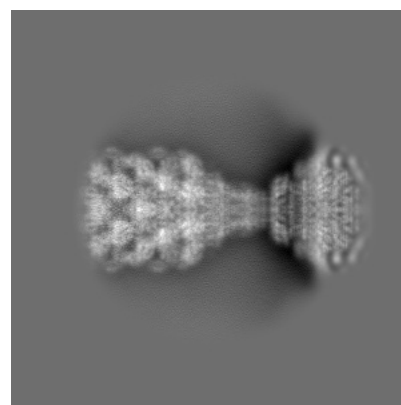
#### 6.1.2 Raw map



X



Y

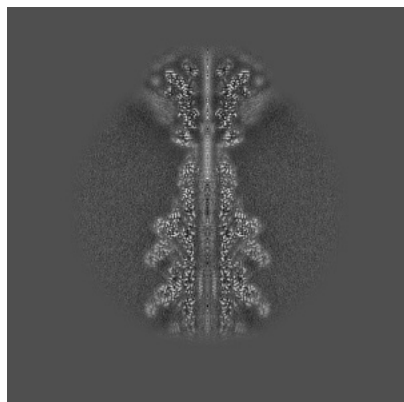


Z

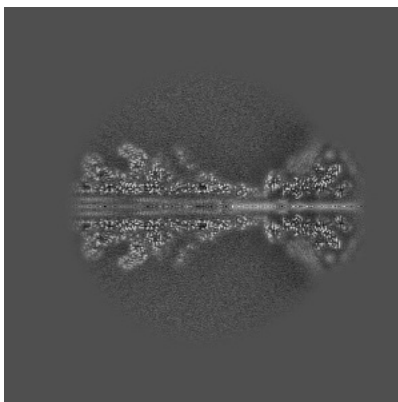
The images above show the map projected in three orthogonal directions.

## 6.2 Central slices [i](#)

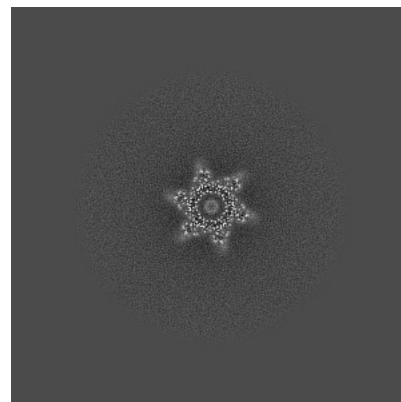
### 6.2.1 Primary map



X Index: 236

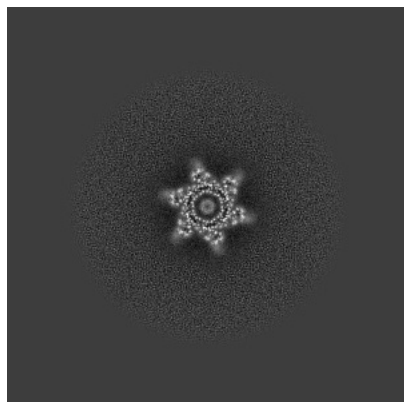


Y Index: 236

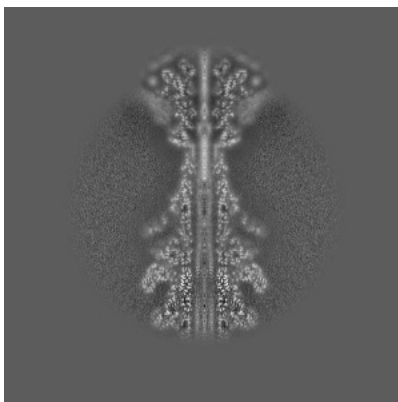


Z Index: 236

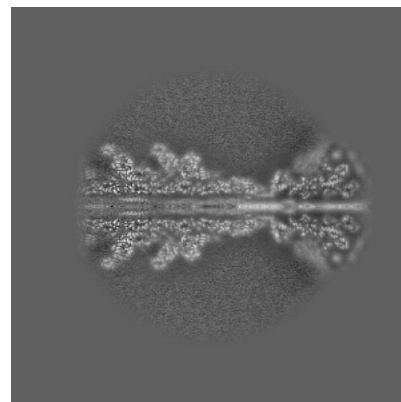
### 6.2.2 Raw map



X Index: 236



Y Index: 236

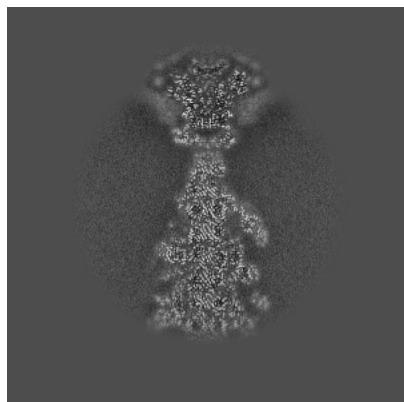


Z Index: 236

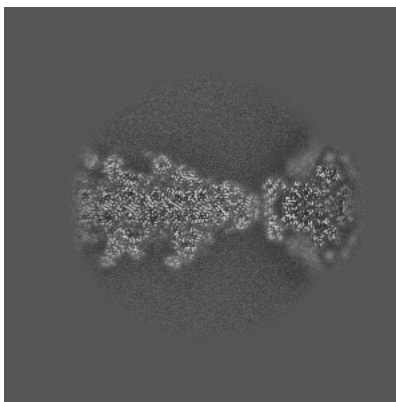
The images above show central slices of the map in three orthogonal directions.

## 6.3 Largest variance slices [i](#)

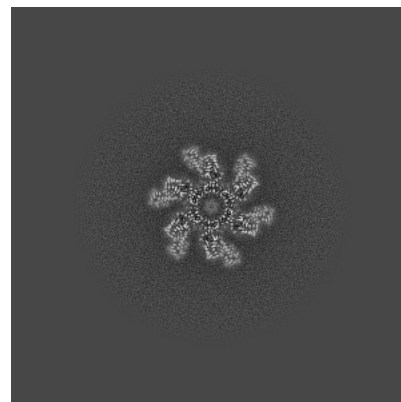
### 6.3.1 Primary map



X Index: 219

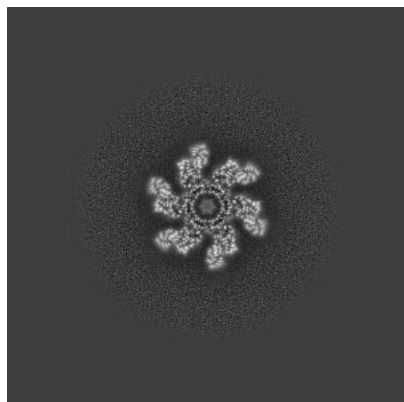


Y Index: 254

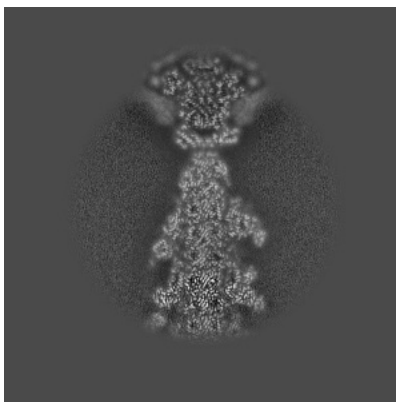


Z Index: 207

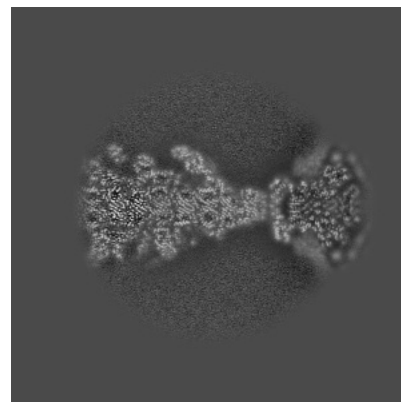
### 6.3.2 Raw map



X Index: 208



Y Index: 218

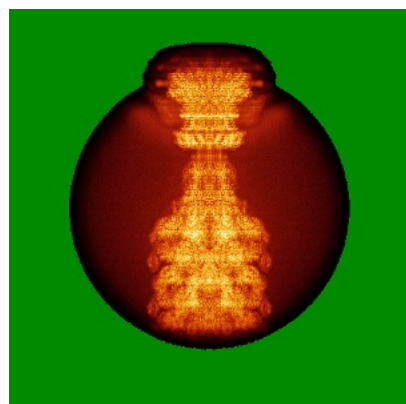


Z Index: 219

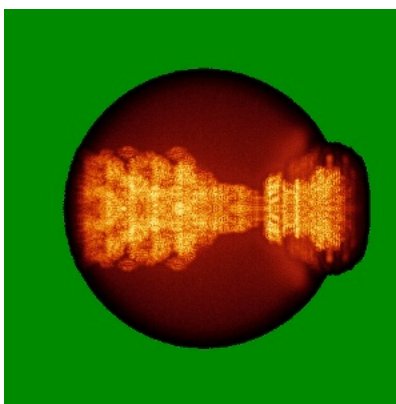
The images above show the largest variance slices of the map in three orthogonal directions.

## 6.4 Orthogonal standard-deviation projections (False-color) [i](#)

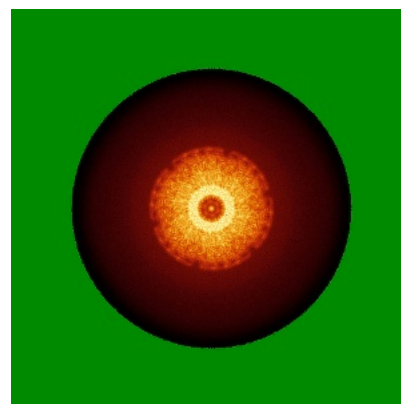
### 6.4.1 Primary map



X

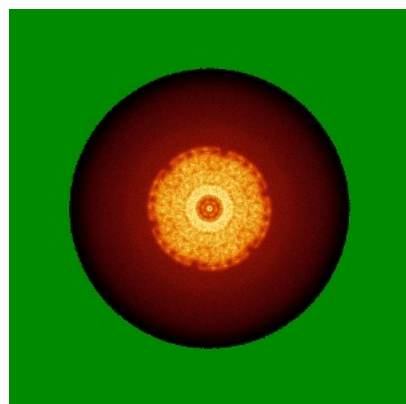


Y

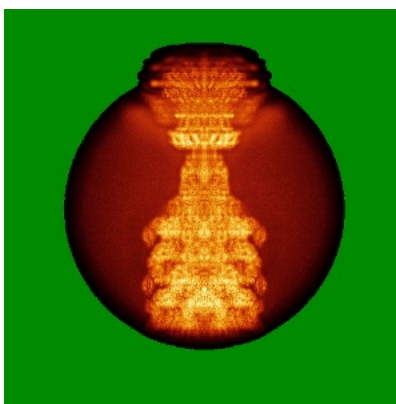


Z

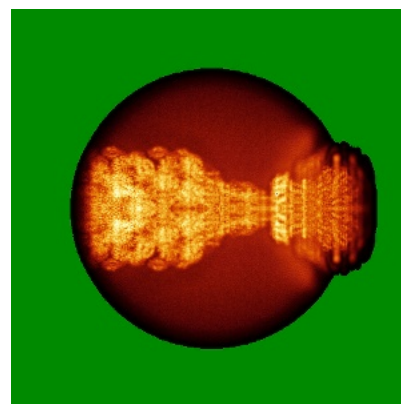
### 6.4.2 Raw map



X



Y

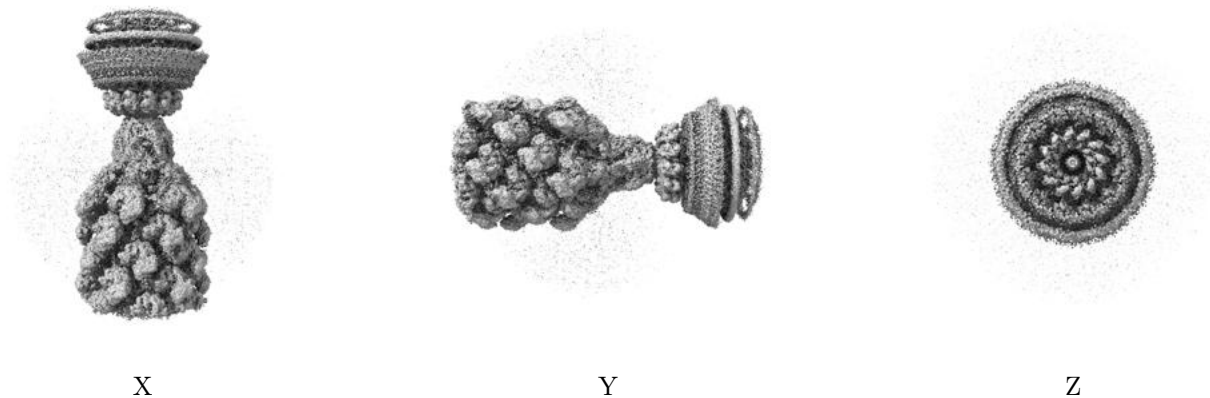


Z

The images above show the map standard deviation projections with false color in three orthogonal directions. Minimum values are shown in green, max in blue, and dark to light orange shades represent small to large values respectively.

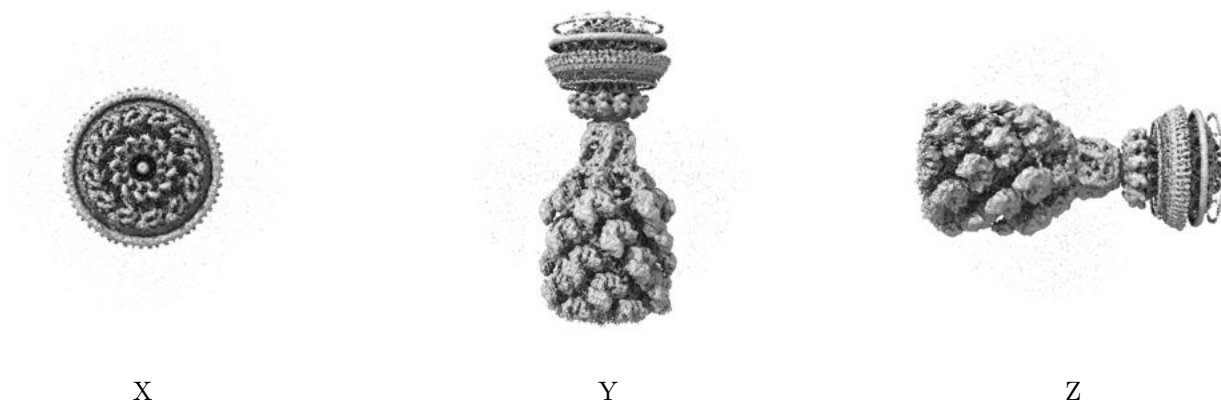
## 6.5 Orthogonal surface views [i](#)

### 6.5.1 Primary map



The images above show the 3D surface view of the map at the recommended contour level 3.65. These images, in conjunction with the slice images, may facilitate assessment of whether an appropriate contour level has been provided.

### 6.5.2 Raw map



These images show the 3D surface of the raw map. The raw map's contour level was selected so that its surface encloses the same volume as the primary map does at its recommended contour level.

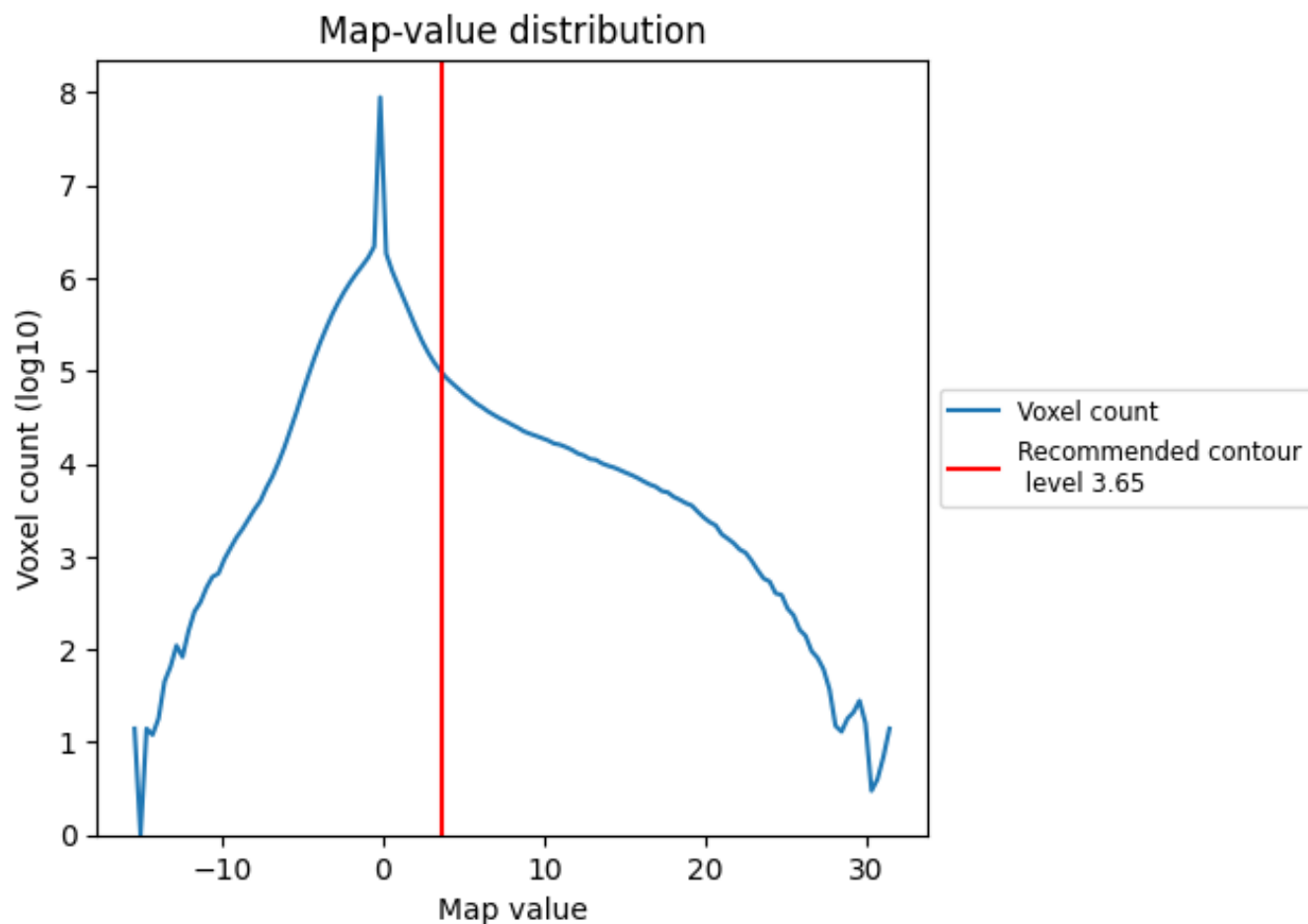
## 6.6 Mask visualisation [i](#)

This section was not generated. No masks/segmentation were deposited.

## 7 Map analysis [i](#)

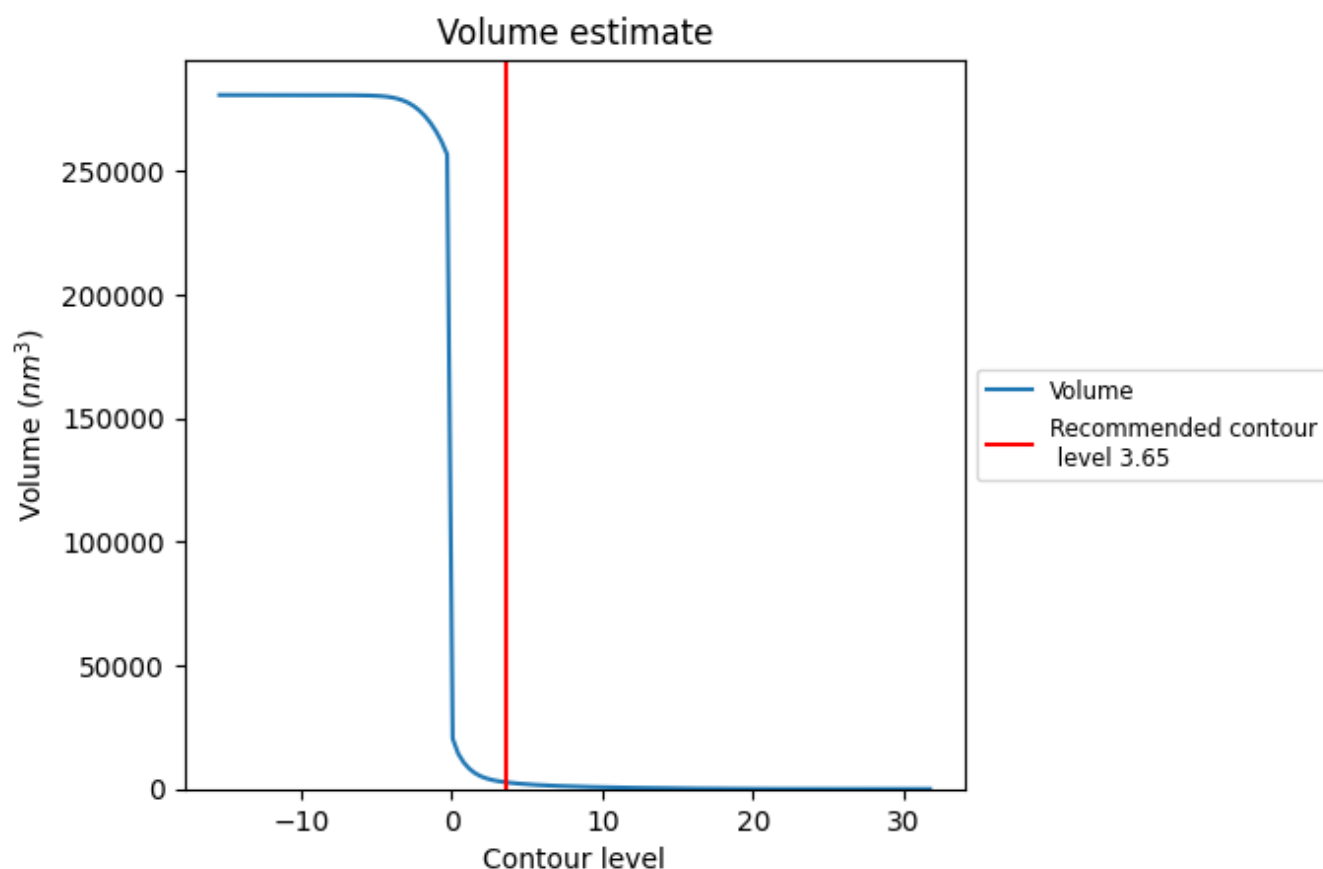
This section contains the results of statistical analysis of the map.

### 7.1 Map-value distribution [i](#)



The map-value distribution is plotted in 128 intervals along the x-axis. The y-axis is logarithmic. A spike in this graph at zero usually indicates that the volume has been masked.

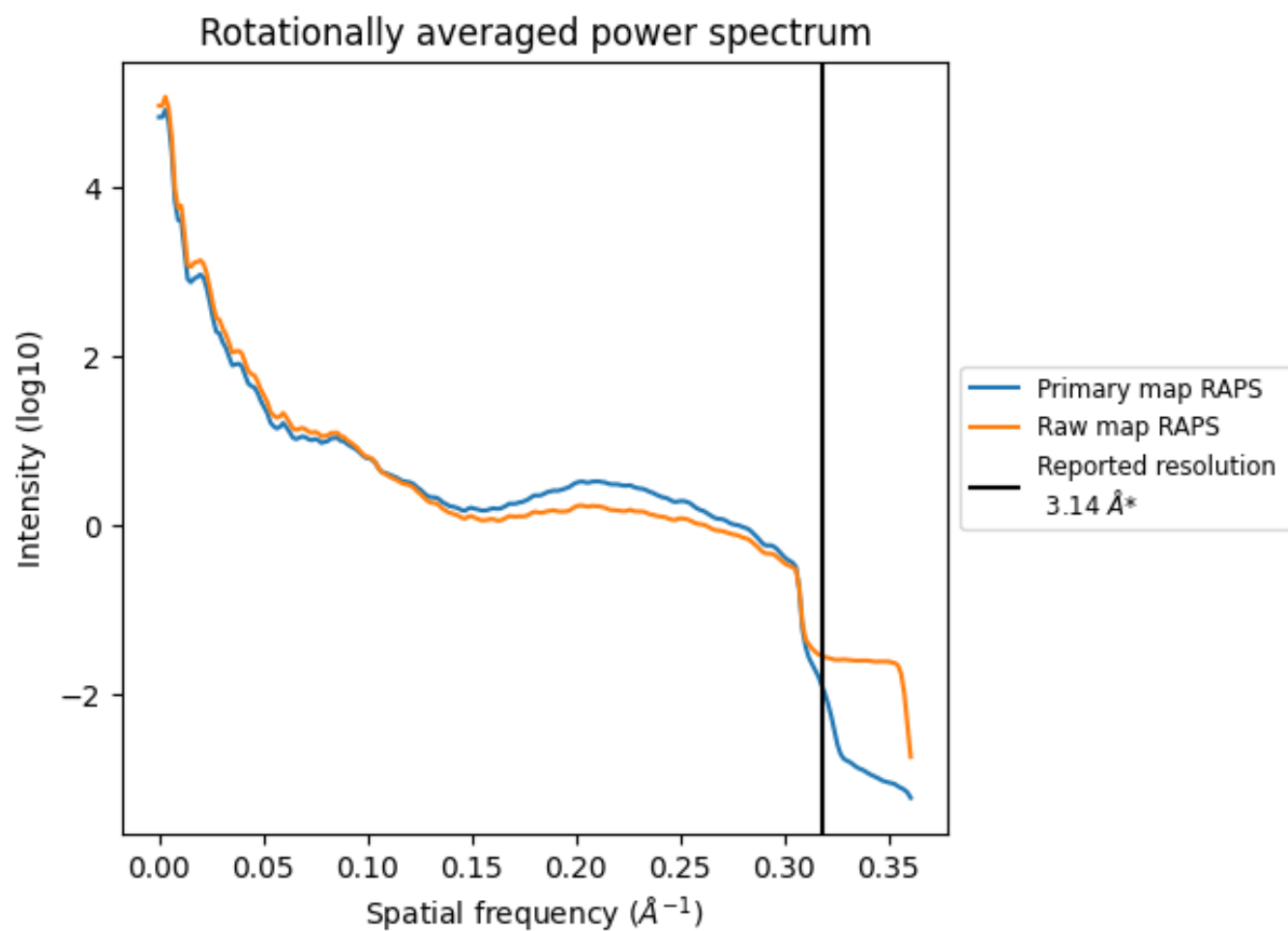
## 7.2 Volume estimate [i](#)



The volume at the recommended contour level is 2673  $\text{nm}^3$ ; this corresponds to an approximate mass of 2415 kDa.

The volume estimate graph shows how the enclosed volume varies with the contour level. The recommended contour level is shown as a vertical line and the intersection between the line and the curve gives the volume of the enclosed surface at the given level.

### 7.3 Rotationally averaged power spectrum ⓘ

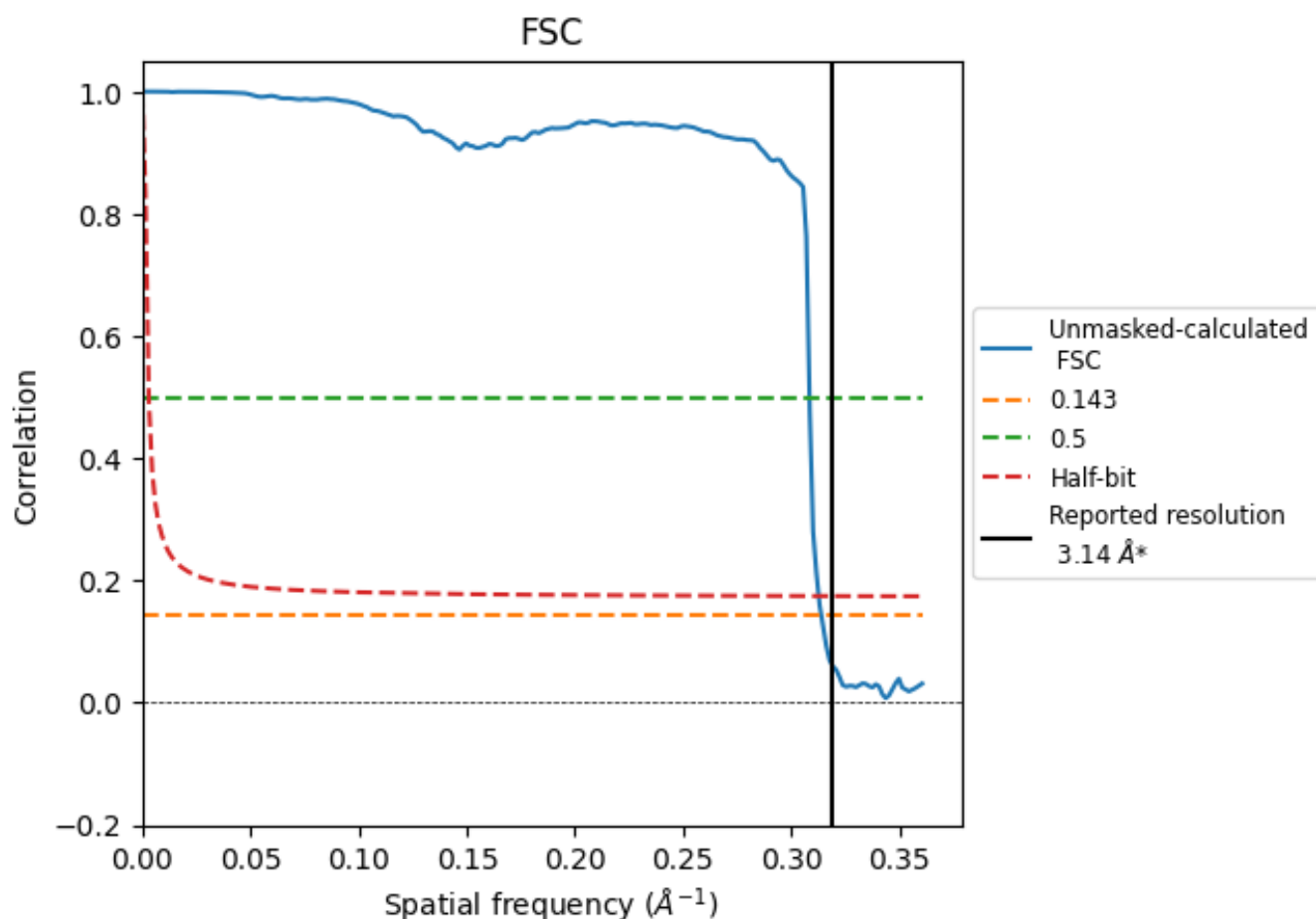


\*Reported resolution corresponds to spatial frequency of 0.318 Å<sup>-1</sup>

## 8 Fourier-Shell correlation [i](#)

Fourier-Shell Correlation (FSC) is the most commonly used method to estimate the resolution of single-particle and subtomogram-averaged maps. The shape of the curve depends on the imposed symmetry, mask and whether or not the two 3D reconstructions used were processed from a common reference. The reported resolution is shown as a black line. A curve is displayed for the half-bit criterion in addition to lines showing the 0.143 gold standard cut-off and 0.5 cut-off.

### 8.1 FSC [i](#)



\*Reported resolution corresponds to spatial frequency of 0.318 Å<sup>-1</sup>

## 8.2 Resolution estimates [i](#)

Resolution estimate (Å)	Estimation criterion (FSC cut-off)		
	0.143	0.5	Half-bit
Reported by author	3.14	-	-
Author-provided FSC curve	-	-	-
Unmasked-calculated*	3.19	3.24	3.20

\*Resolution estimate based on FSC curve calculated by comparison of deposited half-maps.

## 9 Map-model fit [i](#)

This section contains information regarding the fit between EMDB map EMD-45435 and PDB model 9CC7. Per-residue inclusion information can be found in section 3 on page 6.

### 9.1 Map-model overlay [i](#)

This section was not generated.

### 9.2 Q-score mapped to coordinate model [i](#)

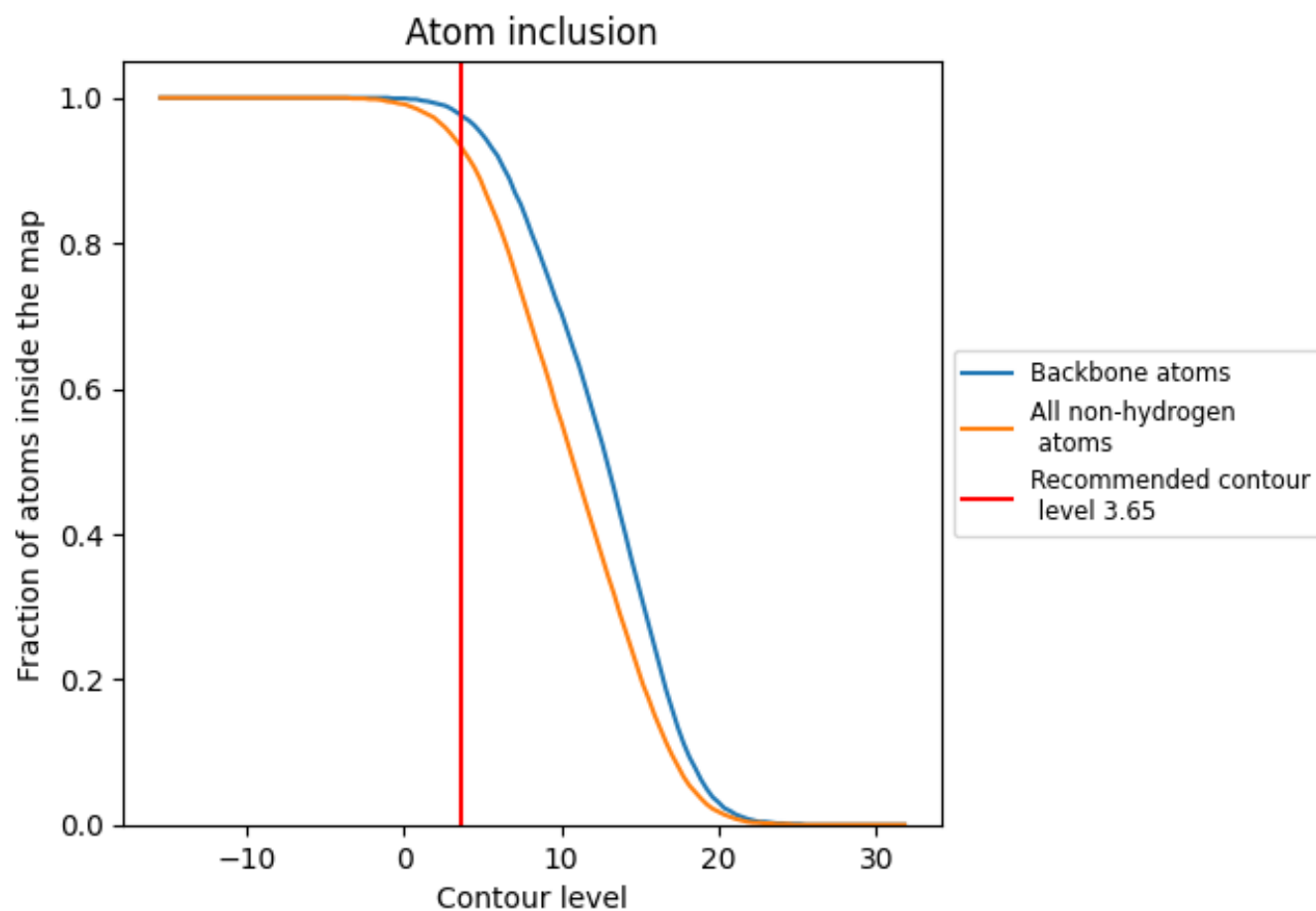


The images above show the model with each residue coloured according to its Q-score. This shows their resolvability in the map with higher Q-score values reflecting better resolvability. Please note: Q-score is calculating the resolvability of atoms, and thus high values are only expected at resolutions at which atoms can be resolved. Low Q-score values may therefore be expected for many entries.

### 9.3 Atom inclusion mapped to coordinate model [i](#)

This section was not generated.

## 9.4 Atom inclusion [i](#)



At the recommended contour level, 98% of all backbone atoms, 93% of all non-hydrogen atoms, are inside the map.

9.5 Map-model fit summary ⓘ

The table lists the average atom inclusion at the recommended contour level (3.65) and Q-score for the entire model and for each chain.

Chain	Atom inclusion	Q-score
All	<div><div></div></div> 0.9330	<div><div></div></div> 0.5050
A	<div><div></div></div> 0.8550	<div><div></div></div> 0.5150
B	<div><div></div></div> 0.8560	<div><div></div></div> 0.5090
C	<div><div></div></div> 0.9370	<div><div></div></div> 0.4720
D	<div><div></div></div> 0.9410	<div><div></div></div> 0.4780
E	<div><div></div></div> 0.9830	<div><div></div></div> 0.5220
F	<div><div></div></div> 0.9790	<div><div></div></div> 0.5220
G	<div><div></div></div> 0.9730	<div><div></div></div> 0.5590
H	<div><div></div></div> 0.9380	<div><div></div></div> 0.5390
I	<div><div></div></div> 0.9820	<div><div></div></div> 0.4990
J	<div><div></div></div> 0.9680	<div><div></div></div> 0.4750

1.0

0.0

<0.0