



Full wwPDB X-ray Structure Validation Report ⓘ

Feb 23, 2018 – 08:49 am GMT

PDB ID : 1CEB
Title : THE STRUCTURE OF THE NON-COVALENT COMPLEX OF RECOMBINANT KRINGLE 1 DOMAIN OF HUMAN PLASMINOGEN WITH AMCHA (TRANS-4-AMINOMETHYLCYCLOHEXANE-1-CARBOXYLIC ACID)
Authors : Tulinsky, A.; Mathews, I.I.
Deposited on : 1995-12-03
Resolution : 2.07 Å(reported)

This is a Full wwPDB X-ray Structure Validation Report for a publicly released PDB entry.

We welcome your comments at validation@mail.wwpdb.org

A user guide is available at

<https://www.wwpdb.org/validation/2017/XrayValidationReportHelp>

with specific help available everywhere you see the ⓘ symbol.

The following versions of software and data (see [references ⓘ](#)) were used in the production of this report:

MolProbity : 4.02b-467
Mogul : 1.7.3 (157068), CSD as539be (2018)
Xtrriage (Phenix) : **NOT EXECUTED**
EDS : **NOT EXECUTED**
Percentile statistics : 20171227.v01 (using entries in the PDB archive December 27th 2017)
Ideal geometry (proteins) : Engh & Huber (2001)
Ideal geometry (DNA, RNA) : Parkinson et al. (1996)
Validation Pipeline (wwPDB-VP) : trunk30686

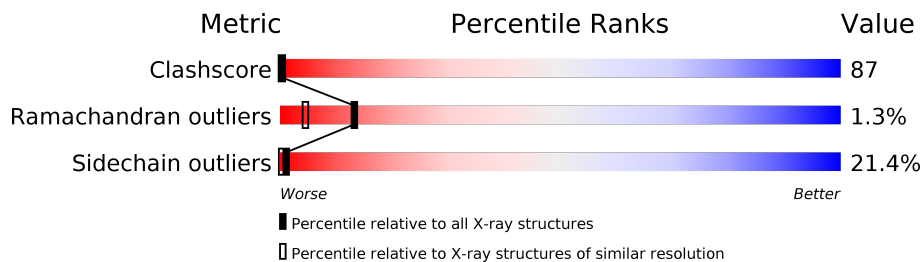
1 Overall quality at a glance

The following experimental techniques were used to determine the structure:

X-RAY DIFFRACTION

The reported resolution of this entry is 2.07 Å.

Percentile scores (ranging between 0-100) for global validation metrics of the entry are shown in the following graphic. The table shows the number of entries on which the scores are based.



Metric	Whole archive (#Entries)	Similar resolution (#Entries, resolution range(Å))
Clashscore	122078	2357 (2.08-2.04)
Ramachandran outliers	120005	2338 (2.08-2.04)
Sidechain outliers	119972	2338 (2.08-2.04)

The table below summarises the geometric issues observed across the polymeric chains and their fit to the electron density. The red, orange, yellow and green segments on the lower bar indicate the fraction of residues that contain outliers for ≥ 3 , 2, 1 and 0 types of geometric quality criteria. A grey segment represents the fraction of residues that are not modelled. The numeric value for each fraction is indicated below the corresponding segment, with a dot representing fractions $\leq 5\%$. The upper red bar (where present) indicates the fraction of residues that have poor fit to the electron density. The numeric value is given above the bar.

Note EDS was not executed.

Mol	Chain	Length	Quality of chain
1	A	88	
1	B	88	

2 Entry composition [i](#)

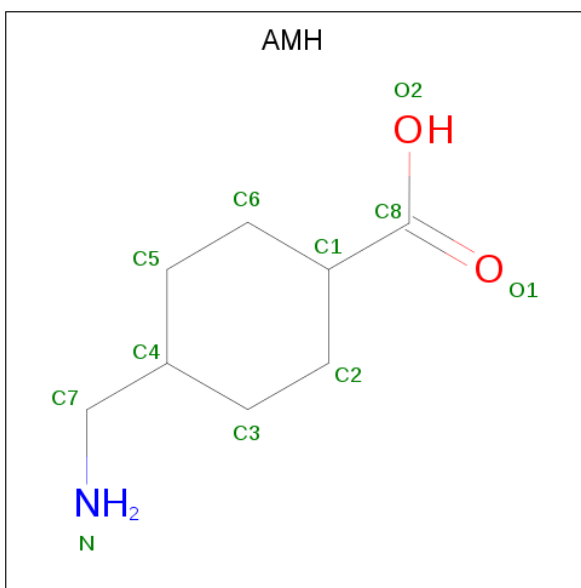
There are 3 unique types of molecules in this entry. The entry contains 1448 atoms, of which 0 are hydrogens and 0 are deuteriums.

In the tables below, the ZeroOcc column contains the number of atoms modelled with zero occupancy, the AltConf column contains the number of residues with at least one atom in alternate conformation and the Trace column contains the number of residues modelled with at most 2 atoms.

- Molecule 1 is a protein called PLASMINOGEN.

Mol	Chain	Residues	Atoms					ZeroOcc	AltConf	Trace
			Total	C	N	O	S			
1	A	80	Total 641	C 390	N 115	O 129	S 7	0	0	0
1	B	80	Total 635	C 387	N 112	O 129	S 7	0	0	0

- Molecule 2 is TRANS-4-AMINOMETHYLCYCLOHEXANE-1-CARBOXYLIC ACID (three-letter code: AMH) (formula: C₈H₁₅NO₂).



Mol	Chain	Residues	Atoms				ZeroOcc	AltConf
			Total	C	N	O		
2	A	1	Total 11	C 8	N 1	O 2	0	0
2	B	1	Total 11	C 8	N 1	O 2	0	0

- Molecule 3 is water.


Mol	Chain	Residues	Atoms		ZeroOcc	AltConf
3	A	81	Total 81	O 81	0	0
3	B	69	Total 69	O 69	0	0

3 Residue-property plots [i](#)

These plots are drawn for all protein, RNA and DNA chains in the entry. The first graphic for a chain summarises the proportions of the various outlier classes displayed in the second graphic. The second graphic shows the sequence view annotated by issues in geometry and electron density. Residues are color-coded according to the number of geometric quality criteria for which they contain at least one outlier: green = 0, yellow = 1, orange = 2 and red = 3 or more. A red dot above a residue indicates a poor fit to the electron density ($RSRZ > 2$). Stretches of 2 or more consecutive residues without any outlier are shown as a green connector. Residues present in the sample, but not in the model, are shown in grey.

Note EDS was not executed.

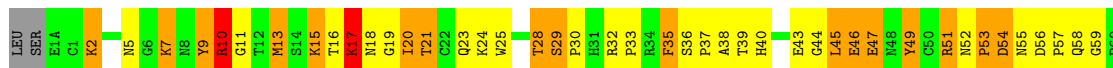
- Molecule 1: PLASMINOGEN

Chain A: 



- Molecule 1: PLASMINOGEN

Chain B: 



4 Data and refinement statistics

Xtrriage (Phenix) and EDS were not executed - this section is therefore incomplete.

Property	Value	Source
Space group	P 21 21 21	Depositor
Cell constants a, b, c, α , β , γ	64.30Å 51.70Å 46.80Å 90.00° 90.00° 90.00°	Depositor
Resolution (Å)	7.00 – 2.07	Depositor
% Data completeness (in resolution range)	57.0 (7.00-2.07)	Depositor
R_{merge}	0.08	Depositor
R_{sym}	(Not available)	Depositor
Refinement program	PROLSQ	Depositor
R, R_{free}	0.178 , (Not available)	Depositor
Estimated twinning fraction	No twinning to report.	Xtrriage
Total number of atoms	1448	wwPDB-VP
Average B, all atoms (Å ²)	17.0	wwPDB-VP

5 Model quality i

5.1 Standard geometry i

Bond lengths and bond angles in the following residue types are not validated in this section: AMH

The Z score for a bond length (or angle) is the number of standard deviations the observed value is removed from the expected value. A bond length (or angle) with $|Z| > 5$ is considered an outlier worth inspection. RMSZ is the root-mean-square of all Z scores of the bond lengths (or angles).

Mol	Chain	Bond lengths		Bond angles	
		RMSZ	# Z >5	RMSZ	# Z >5
1	A	1.09	0/660	2.24	18/895 (2.0%)
1	B	1.21	1/654 (0.2%)	2.24	31/888 (3.5%)
All	All	1.15	1/1314 (0.1%)	2.24	49/1783 (2.7%)

Chiral center outliers are detected by calculating the chiral volume of a chiral center and verifying if the center is modelled as a planar moiety or with the opposite hand. A planarity outlier is detected by checking planarity of atoms in a peptide group, atoms in a mainchain group or atoms of a sidechain that are expected to be planar.

Mol	Chain	#Chirality outliers	#Planarity outliers
1	A	0	3
1	B	0	1
All	All	0	4

All (1) bond length outliers are listed below:

Mol	Chain	Res	Type	Atoms	Z	Observed(Å)	Ideal(Å)
1	B	79	CYS	CB-SG	-5.15	1.73	1.81

All (49) bond angle outliers are listed below:

Mol	Chain	Res	Type	Atoms	Z	Observed(°)	Ideal(°)
1	A	51	ARG	NE-CZ-NH2	27.85	134.23	120.30
1	A	46	GLU	OE1-CD-OE2	9.70	134.94	123.30
1	B	17	LYS	CA-CB-CG	9.42	134.12	113.40
1	A	51	ARG	NE-CZ-NH1	-9.17	115.72	120.30
1	A	51	ARG	NH1-CZ-NH2	-8.90	109.61	119.40
1	B	46	GLU	OE1-CD-OE2	-8.14	113.54	123.30
1	B	46	GLU	CA-CB-CG	8.13	131.28	113.40
1	B	51	ARG	NE-CZ-NH1	8.11	124.35	120.30

Continued on next page...

Continued from previous page...

Mol	Chain	Res	Type	Atoms	Z	Observed(°)	Ideal(°)
1	B	46	GLU	CB-CG-CD	7.83	135.34	114.20
1	B	70	ARG	NE-CZ-NH2	-7.62	116.49	120.30
1	B	49	TYR	CB-CG-CD2	-7.38	116.57	121.00
1	B	69	LYS	CB-CG-CD	7.36	130.73	111.60
1	B	71	TYR	CB-CG-CD2	-7.32	116.61	121.00
1	B	51	ARG	NE-CZ-NH2	7.31	123.95	120.30
1	A	10	ARG	NE-CZ-NH1	7.29	123.95	120.30
1	B	72	ASP	CA-CB-CG	7.23	129.31	113.40
1	B	51	ARG	NH1-CZ-NH2	-7.03	111.66	119.40
1	A	49	TYR	CB-CG-CD2	-6.78	116.94	121.00
1	B	9	TYR	CB-CG-CD1	6.51	124.91	121.00
1	B	53	PRO	O-C-N	6.43	132.99	122.70
1	B	72	ASP	CB-CG-OD1	6.41	124.07	118.30
1	B	69	LYS	CG-CD-CE	6.38	131.03	111.90
1	B	47	GLU	CG-CD-OE1	6.34	130.99	118.30
1	A	20	ILE	O-C-N	6.28	132.74	122.70
1	B	10	ARG	NE-CZ-NH1	6.23	123.42	120.30
1	B	78	GLU	N-CA-CB	6.22	121.80	110.60
1	A	32	ARG	NE-CZ-NH1	6.04	123.32	120.30
1	A	38	ALA	C-N-CA	6.01	136.72	121.70
1	A	78	GLU	CA-C-O	5.96	132.62	120.10
1	B	68	GLU	CG-CD-OE2	5.93	130.17	118.30
1	A	52	ASN	CB-CG-OD1	-5.91	109.78	121.60
1	B	10	ARG	C-N-CA	5.90	134.70	122.30
1	A	79	CYS	N-CA-CB	-5.83	100.10	110.60
1	B	54	ASP	CB-CG-OD2	-5.78	113.10	118.30
1	B	10	ARG	CA-CB-CG	5.77	126.10	113.40
1	A	69	LYS	N-CA-CB	-5.77	100.22	110.60
1	A	1(A)	GLU	OE1-CD-OE2	5.73	130.18	123.30
1	B	72	ASP	OD1-CG-OD2	-5.72	112.43	123.30
1	A	63	TYR	C-N-CA	5.62	135.75	121.70
1	B	72	ASP	CB-CG-OD2	5.48	123.23	118.30
1	B	64	THR	OG1-CB-CG2	5.44	122.52	110.00
1	B	10	ARG	NE-CZ-NH2	-5.38	117.61	120.30
1	B	69	LYS	CB-CA-C	5.37	121.13	110.40
1	A	77	LEU	CB-CA-C	5.36	120.38	110.20
1	A	20	ILE	CB-CA-C	-5.33	100.94	111.60
1	B	64	THR	N-CA-CB	-5.22	100.37	110.30
1	B	38	ALA	O-C-N	-5.20	114.38	122.70
1	A	55	ASN	CB-CG-OD1	-5.19	111.22	121.60
1	B	38	ALA	CB-CA-C	5.04	117.67	110.10

There are no chirality outliers.

All (4) planarity outliers are listed below:

Mol	Chain	Res	Type	Group
1	A	22	CYS	Mainchain
1	A	68	GLU	Mainchain
1	A	70	ARG	Sidechain
1	B	58	GLN	Mainchain

5.2 Too-close contacts [i](#)

In the following table, the Non-H and H(model) columns list the number of non-hydrogen atoms and hydrogen atoms in the chain respectively. The H(added) column lists the number of hydrogen atoms added and optimized by MolProbity. The Clashes column lists the number of clashes within the asymmetric unit, whereas Symm-Clashes lists symmetry related clashes.

Mol	Chain	Non-H	H(model)	H(added)	Clashes	Symm-Clashes
1	A	641	0	583	146	0
1	B	635	0	572	79	0
2	A	11	0	13	1	0
2	B	11	0	14	2	0
3	A	81	0	0	14	0
3	B	69	0	0	3	0
All	All	1448	0	1182	216	0

The all-atom clashscore is defined as the number of clashes found per 1000 atoms (including hydrogen atoms). The all-atom clashscore for this structure is 87.

All (216) close contacts within the same asymmetric unit are listed below, sorted by their clash magnitude.

Atom-1	Atom-2	Interatomic distance (Å)	Clash overlap (Å)
1:A:64:THR:HG23	1:A:66:ASP:H	1.09	1.18
1:A:3:THR:HG22	1:A:79:CYS:CB	1.80	1.10
1:A:1(A):GLU:OE1	1:A:1(A):GLU:CA	1.92	1.09
1:A:28:THR:HB	1:A:32:ARG:HG3	1.22	1.09
1:A:28:THR:HB	1:A:32:ARG:CG	1.86	1.05
1:B:36:SER:HB2	1:B:37:PRO:HD2	1.42	1.02
1:A:22:CYS:O	1:A:65:THR:HG23	1.58	1.01
1:B:28:THR:HG22	1:B:32:ARG:HA	1.42	1.01
1:B:18:ASN:ND2	3:B:310:HOH:O	1.95	0.99
1:A:3:THR:CG2	1:A:79:CYS:HB3	1.93	0.97
1:A:3:THR:HG22	1:A:79:CYS:HB3	0.98	0.97
1:A:15:LYS:HG2	1:A:20:ILE:C	1.86	0.96

Continued on next page...

Continued from previous page...

Atom-1	Atom-2	Interatomic distance (Å)	Clash overlap (Å)
1:A:39:THR:HG22	1:A:40:HIS:CE1	2.00	0.96
1:A:64:THR:CG2	1:A:66:ASP:H	1.78	0.95
1:A:69:LYS:HE2	1:A:72:ASP:HB2	1.46	0.95
1:A:15:LYS:HD2	1:A:19:GLY:O	1.66	0.94
1:A:1(A):GLU:HA	1:A:1(A):GLU:OE1	1.13	0.94
1:A:13:MET:CE	1:A:15:LYS:O	2.15	0.94
1:B:17:LYS:HZ3	1:B:17:LYS:HB2	1.33	0.93
1:B:28:THR:CG2	1:B:32:ARG:HG3	2.00	0.91
1:A:64:THR:HG23	1:A:66:ASP:N	1.86	0.90
1:A:13:MET:HE3	1:A:15:LYS:O	1.71	0.90
1:B:17:LYS:HB3	1:B:75:ASP:OD2	1.74	0.88
1:A:2:LYS:O	1:A:79:CYS:CB	2.20	0.88
1:A:16:THR:HG21	1:A:72:ASP:HB3	1.54	0.87
1:B:28:THR:HG22	1:B:32:ARG:CA	2.05	0.85
1:A:39:THR:CG2	1:A:40:HIS:CE1	2.60	0.85
1:A:13:MET:HE2	3:A:376:HOH:O	1.75	0.85
1:A:77:LEU:HD12	1:A:77:LEU:N	1.92	0.85
1:A:40:HIS:CE1	1:B:39:THR:CG2	2.60	0.83
1:B:9:TYR:OH	1:B:13:MET:HB2	1.79	0.81
1:B:28:THR:HG22	1:B:32:ARG:CB	2.08	0.81
1:A:64:THR:HG21	1:A:69:LYS:HG3	1.62	0.80
1:B:28:THR:HG22	1:B:32:ARG:HG3	1.64	0.80
1:B:16:THR:OG1	1:B:20:ILE:HG23	1.82	0.79
1:A:2:LYS:O	1:A:79:CYS:HB3	1.82	0.79
1:B:44:GLY:HA2	1:B:46:GLU:OE1	1.84	0.78
1:B:10:ARG:NH1	1:B:43:GLU:O	2.18	0.77
1:A:40:HIS:NE2	1:B:39:THR:HG22	2.00	0.77
1:A:68:GLU:N	1:A:68:GLU:OE1	2.17	0.76
1:B:36:SER:HB2	1:B:37:PRO:CD	2.16	0.76
1:B:5:ASN:OD1	1:B:52:ASN:ND2	2.19	0.76
1:A:23:GLN:OE1	1:A:30:PRO:HD2	1.87	0.75
1:A:13:MET:HE1	1:A:15:LYS:O	1.85	0.75
1:A:40:HIS:CE1	1:B:39:THR:HG22	2.22	0.75
1:B:28:THR:HG22	1:B:32:ARG:CG	2.17	0.75
1:A:40:HIS:HE2	1:B:39:THR:HG22	1.52	0.74
1:A:55:ASN:OD1	1:A:55:ASN:O	2.04	0.74
1:B:33:PRO:HB3	1:B:63:TYR:CE2	2.23	0.74
1:B:20:ILE:HD12	1:B:21:THR:N	2.03	0.74
1:B:44:GLY:O	1:B:46:GLU:N	2.20	0.73
1:B:64:THR:HG23	1:B:66:ASP:H	1.54	0.73
1:A:69:LYS:CE	1:A:72:ASP:HB2	2.18	0.73

Continued on next page...

Continued from previous page...

Atom-1	Atom-2	Interatomic distance (Å)	Clash overlap (Å)
1:B:17:LYS:HB2	1:B:17:LYS:NZ	2.03	0.72
1:A:58:GLN:HB2	1:A:73:TYR:CE2	2.25	0.72
1:A:67:PRO:HG2	3:A:266:HOH:O	1.89	0.71
1:B:51:ARG:C	1:B:53:PRO:HD3	2.11	0.71
1:A:20:ILE:CG1	1:A:21:THR:N	2.54	0.71
1:A:44:GLY:O	1:A:46:GLU:HG2	1.90	0.70
1:A:16:THR:OG1	1:A:20:ILE:HG22	1.91	0.70
1:A:39:THR:C	1:A:41:PRO:HD3	2.12	0.70
1:B:44:GLY:CA	1:B:46:GLU:OE1	2.40	0.70
1:A:69:LYS:HE2	1:A:71:TYR:O	1.91	0.69
1:A:20:ILE:HD13	1:A:64:THR:HG23	1.74	0.69
1:B:28:THR:CG2	1:B:32:ARG:CG	2.71	0.68
1:A:5:ASN:ND2	3:A:216:HOH:O	2.27	0.68
1:A:64:THR:CG2	1:A:66:ASP:HB3	2.24	0.67
1:B:64:THR:CG2	1:B:66:ASP:H	2.07	0.67
1:A:64:THR:CG2	1:A:66:ASP:N	2.52	0.67
1:A:27:SER:O	3:A:277:HOH:O	2.13	0.67
1:A:2:LYS:HD3	1:A:78:GLU:OE2	1.94	0.66
1:A:15:LYS:HG3	1:A:21:THR:HA	1.76	0.66
1:A:2:LYS:O	1:A:79:CYS:N	2.28	0.66
1:A:69:LYS:CE	1:A:71:TYR:O	2.44	0.66
1:A:64:THR:HG22	1:A:66:ASP:O	1.96	0.66
1:B:54:ASP:O	1:B:55:ASN:HB3	1.95	0.65
1:A:28:THR:CB	1:A:32:ARG:HG3	2.14	0.65
1:A:77:LEU:N	1:A:77:LEU:CD1	2.60	0.64
1:A:2:LYS:HG2	1:A:3:THR:N	2.13	0.64
1:A:40:HIS:HE1	1:B:39:THR:CG2	2.06	0.64
1:B:75:ASP:C	1:B:76:ILE:HD13	2.18	0.64
1:A:16:THR:HB	1:A:73:TYR:O	1.98	0.63
1:B:73:TYR:HB3	3:B:333:HOH:O	1.99	0.63
1:A:2:LYS:O	1:A:79:CYS:HB2	1.99	0.63
1:A:31:HIS:CE1	1:A:70:ARG:HA	2.33	0.63
1:A:63:TYR:HE2	1:A:70:ARG:NH1	1.97	0.62
1:B:10:ARG:HH11	1:B:51:ARG:HD2	1.63	0.62
1:A:39:THR:HG23	1:B:40:HIS:CE1	2.35	0.62
1:A:77:LEU:H	1:A:77:LEU:HD12	1.63	0.62
1:A:55:ASN:CG	1:A:55:ASN:O	2.37	0.62
1:B:9:TYR:CE1	1:B:11:GLY:HA3	2.35	0.61
1:B:59:GLY:O	1:B:61:TRP:HD1	1.82	0.61
1:B:28:THR:HG21	1:B:32:ARG:NE	2.15	0.61
1:A:54:ASP:OD2	2:A:90:AMH:H71	2.01	0.61

Continued on next page...

Continued from previous page...

Atom-1	Atom-2	Interatomic distance (Å)	Clash overlap (Å)
1:A:7:LYS:HG2	1:A:55:ASN:HD22	1.66	0.61
1:B:23:GLN:OE1	1:B:30:PRO:HD2	2.01	0.60
1:A:10:ARG:HE	1:A:51:ARG:HD2	1.65	0.60
1:A:75:ASP:C	1:A:76:ILE:HD12	2.22	0.60
1:B:17:LYS:HZ3	1:B:17:LYS:CB	2.13	0.60
1:A:35:PHE:CD2	1:A:53:PRO:HB2	2.37	0.60
1:B:64:THR:HB	1:B:69:LYS:O	2.01	0.60
1:A:64:THR:HG21	1:A:66:ASP:HB3	1.84	0.60
1:A:21:THR:HG22	1:A:22:CYS:O	2.02	0.59
1:A:39:THR:HG22	1:A:40:HIS:ND1	2.15	0.59
1:A:77:LEU:H	1:A:77:LEU:CD1	2.14	0.58
1:A:2:LYS:C	1:A:79:CYS:HB3	2.24	0.57
1:B:17:LYS:CB	1:B:17:LYS:NZ	2.64	0.57
1:A:10:ARG:HE	1:A:51:ARG:CD	2.16	0.57
1:B:61:TRP:CH2	2:B:90:AMH:H31	2.39	0.57
1:A:63:TYR:CE2	1:A:70:ARG:NH1	2.72	0.57
1:A:20:ILE:HG13	1:A:21:THR:N	2.18	0.57
1:A:10:ARG:HD3	1:A:51:ARG:NE	2.20	0.57
1:A:13:MET:CE	3:A:376:HOH:O	2.39	0.57
1:A:16:THR:OG1	1:A:20:ILE:CG2	2.52	0.57
1:A:22:CYS:O	1:A:65:THR:CG2	2.43	0.56
1:B:56:ASP:OD1	1:B:57:PRO:HD2	2.05	0.56
1:B:61:TRP:CZ2	2:B:90:AMH:H71	2.40	0.56
1:A:23:GLN:HG3	1:A:30:PRO:HD2	1.88	0.56
1:A:76:ILE:N	1:A:76:ILE:CD1	2.69	0.56
1:B:29:SER:HA	1:B:30:PRO:C	2.26	0.55
1:A:20:ILE:HG13	1:A:21:THR:H	1.71	0.55
1:B:35:PHE:CD1	1:B:35:PHE:N	2.74	0.55
1:A:39:THR:CG2	1:B:40:HIS:CE1	2.90	0.55
1:B:10:ARG:NH1	1:B:51:ARG:HD2	2.22	0.55
1:B:7:LYS:HD3	1:B:52:ASN:O	2.07	0.55
1:A:20:ILE:HG12	1:A:21:THR:N	2.21	0.54
1:B:28:THR:HG21	1:B:32:ARG:HG3	1.87	0.54
1:A:8:ASN:ND2	3:A:309:HOH:O	2.39	0.54
1:A:1(A):GLU:HG3	3:A:433:HOH:O	2.08	0.54
1:A:40:HIS:HB3	1:A:43:GLU:HG2	1.89	0.54
1:A:64:THR:HG21	1:A:69:LYS:CG	2.36	0.53
1:A:40:HIS:N	1:A:41:PRO:HD3	2.24	0.53
1:B:5:ASN:HD21	1:B:55:ASN:ND2	2.07	0.53
1:A:3:THR:HG22	1:A:79:CYS:SG	2.49	0.53
1:A:39:THR:HG21	1:A:40:HIS:CE1	2.43	0.53

Continued on next page...

Continued from previous page...

Atom-1	Atom-2	Interatomic distance (Å)	Clash overlap (Å)
1:A:5:ASN:OD1	1:A:52:ASN:ND2	2.41	0.52
1:B:24:LYS:HD3	1:B:47:GLU:O	2.09	0.52
1:A:15:LYS:CD	1:A:19:GLY:O	2.50	0.52
1:A:69:LYS:HE3	3:A:252:HOH:O	2.10	0.52
1:B:21:THR:CG2	1:B:65:THR:HG21	2.39	0.52
1:A:20:ILE:CD1	1:A:64:THR:HG23	2.40	0.52
1:B:20:ILE:HD12	1:B:21:THR:H	1.75	0.51
1:A:1(A):GLU:CG	3:A:433:HOH:O	2.58	0.51
1:B:2:LYS:O	1:B:79:CYS:HB2	2.10	0.51
1:B:28:THR:CG2	1:B:32:ARG:HA	2.28	0.51
1:A:75:ASP:HB3	3:A:271:HOH:O	2.10	0.50
1:A:20:ILE:HD12	1:A:66:ASP:HB2	1.93	0.50
1:B:46:GLU:O	1:B:47:GLU:C	2.49	0.50
1:A:1(A):GLU:HB3	1:A:9:TYR:CE1	2.47	0.49
1:A:9:TYR:CZ	1:A:11:GLY:HA3	2.47	0.49
1:B:5:ASN:ND2	3:B:315:HOH:O	2.37	0.49
1:A:5:ASN:OD1	1:A:55:ASN:HA	2.12	0.49
1:B:52:ASN:N	1:B:53:PRO:HD3	2.27	0.49
1:B:5:ASN:ND2	1:B:55:ASN:HD21	2.10	0.49
1:A:44:GLY:O	1:A:46:GLU:N	2.42	0.49
1:A:31:HIS:O	1:A:33:PRO:HD3	2.13	0.49
1:A:1(A):GLU:HB3	1:A:9:TYR:HE1	1.78	0.48
1:A:15:LYS:CG	1:A:21:THR:HA	2.42	0.48
1:A:69:LYS:HG3	1:A:69:LYS:O	2.14	0.48
1:A:10:ARG:HD3	1:A:51:ARG:HE	1.79	0.48
1:A:69:LYS:HD2	1:A:71:TYR:O	2.14	0.48
1:B:5:ASN:HD21	1:B:55:ASN:HD21	1.61	0.48
1:B:51:ARG:O	1:B:53:PRO:HD3	2.13	0.47
1:A:15:LYS:HG2	1:A:20:ILE:O	2.13	0.47
1:B:5:ASN:ND2	1:B:55:ASN:ND2	2.62	0.47
1:A:73:TYR:N	1:A:73:TYR:CD1	2.83	0.47
1:B:25:TRP:CE3	1:B:45:LEU:HG	2.50	0.46
1:A:40:HIS:CB	1:A:43:GLU:HG2	2.46	0.46
1:A:64:THR:HG23	1:A:66:ASP:HB3	1.98	0.46
1:A:33:PRO:HB3	1:A:63:TYR:CE1	2.50	0.46
1:A:36:SER:HB2	1:A:37:PRO:HD2	1.97	0.46
1:A:2:LYS:HG2	1:A:78:GLU:OE2	2.15	0.46
1:B:10:ARG:HH11	1:B:51:ARG:CD	2.28	0.46
1:A:40:HIS:N	1:A:41:PRO:CD	2.78	0.46
1:B:36:SER:CA	1:B:45:LEU:HD23	2.45	0.46
1:B:59:GLY:O	1:B:73:TYR:HD2	1.98	0.45

Continued on next page...

Continued from previous page...

Atom-1	Atom-2	Interatomic distance (Å)	Clash overlap (Å)
1:A:78:GLU:N	3:A:405:HOH:O	2.19	0.45
1:A:17:LYS:N	1:A:73:TYR:O	2.40	0.44
1:A:76:ILE:N	1:A:76:ILE:HD12	2.33	0.44
1:A:10:ARG:CD	1:A:51:ARG:HE	2.30	0.44
1:A:23:GLN:OE1	1:A:30:PRO:CD	2.60	0.44
1:A:40:HIS:NE2	1:B:39:THR:CG2	2.70	0.44
1:A:64:THR:CG2	1:A:69:LYS:O	2.66	0.43
1:A:7:LYS:CD	1:A:55:ASN:HB2	2.48	0.43
1:A:39:THR:C	1:A:41:PRO:CD	2.86	0.43
1:A:36:SER:CB	1:A:37:PRO:CD	2.96	0.43
1:B:36:SER:CB	1:B:37:PRO:HD2	2.28	0.43
1:A:1:CYS:HB2	1:A:79:CYS:HB2	1.71	0.43
1:A:15:LYS:HA	1:A:20:ILE:O	2.18	0.42
1:A:55:ASN:HB3	3:A:246:HOH:O	2.18	0.42
1:A:69:LYS:CD	1:A:71:TYR:O	2.66	0.42
1:B:21:THR:HG23	1:B:65:THR:HG21	2.01	0.42
1:A:20:ILE:HD11	1:A:66:ASP:N	2.34	0.42
1:B:28:THR:HG23	1:B:33:PRO:HD2	2.01	0.42
1:A:47:GLU:HB3	1:A:48:ASN:H	1.66	0.42
1:B:24:LYS:CD	1:B:47:GLU:O	2.67	0.42
1:B:61:TRP:N	1:B:61:TRP:CD1	2.87	0.42
1:B:15:LYS:HG2	1:B:19:GLY:C	2.40	0.42
1:A:7:LYS:HD3	1:A:55:ASN:HB2	2.01	0.42
1:B:13:MET:O	1:B:49:TYR:HA	2.20	0.42
1:B:49:TYR:HB3	1:B:51:ARG:HH12	1.84	0.41
1:A:39:THR:CG2	1:B:40:HIS:NE2	2.84	0.41
1:A:10:ARG:CD	1:A:51:ARG:NE	2.83	0.41
1:A:15:LYS:HG2	1:A:21:THR:N	2.30	0.41
1:B:21:THR:HG22	1:B:65:THR:OG1	2.20	0.41
1:A:28:THR:HB	1:A:32:ARG:HG2	1.89	0.41
1:A:9:TYR:O	1:A:10:ARG:NE	2.54	0.41
1:A:20:ILE:HD13	1:A:64:THR:CG2	2.48	0.41
1:A:8:ASN:HB2	3:A:367:HOH:O	2.20	0.41
1:A:46:GLU:HG2	1:A:46:GLU:H	1.47	0.41
1:A:7:LYS:O	1:A:10:ARG:NH2	2.53	0.41
1:A:23:GLN:CG	1:A:30:PRO:HD2	2.50	0.41
1:A:61:TRP:HA	1:A:73:TYR:HA	2.03	0.41
1:A:27:SER:HB2	3:A:237:HOH:O	2.20	0.40
1:A:64:THR:CG2	1:A:66:ASP:CB	2.98	0.40
1:A:2:LYS:CD	1:A:78:GLU:OE2	2.66	0.40

There are no symmetry-related clashes.

5.3 Torsion angles [i](#)

5.3.1 Protein backbone [i](#)

In the following table, the Percentiles column shows the percent Ramachandran outliers of the chain as a percentile score with respect to all X-ray entries followed by that with respect to entries of similar resolution.

The Analysed column shows the number of residues for which the backbone conformation was analysed, and the total number of residues.

Mol	Chain	Analysed	Favoured	Allowed	Outliers	Percentiles	
1	A	78/88 (89%)	71 (91%)	6 (8%)	1 (1%)	13	4
1	B	78/88 (89%)	71 (91%)	6 (8%)	1 (1%)	13	4
All	All	156/176 (89%)	142 (91%)	12 (8%)	2 (1%)	13	4

All (2) Ramachandran outliers are listed below:

Mol	Chain	Res	Type
1	A	60	PRO
1	B	45	LEU

5.3.2 Protein sidechains [i](#)

In the following table, the Percentiles column shows the percent sidechain outliers of the chain as a percentile score with respect to all X-ray entries followed by that with respect to entries of similar resolution.

The Analysed column shows the number of residues for which the sidechain conformation was analysed, and the total number of residues.

Mol	Chain	Analysed	Rotameric	Outliers	Percentiles	
1	A	73/81 (90%)	55 (75%)	18 (25%)	0	0
1	B	72/81 (89%)	59 (82%)	13 (18%)	2	0
All	All	145/162 (90%)	114 (79%)	31 (21%)	1	0

All (31) residues with a non-rotameric sidechain are listed below:

Mol	Chain	Res	Type
1	A	1(A)	GLU
1	A	2	LYS
1	A	3	THR
1	A	5	ASN

Continued on next page...

Continued from previous page...

Mol	Chain	Res	Type
1	A	7	LYS
1	A	10	ARG
1	A	13	MET
1	A	15	LYS
1	A	17	LYS
1	A	36	SER
1	A	40	HIS
1	A	43	GLU
1	A	45	LEU
1	A	47	GLU
1	A	64	THR
1	A	73	TYR
1	A	76	ILE
1	A	79	CYS
1	B	2	LYS
1	B	7	LYS
1	B	10	ARG
1	B	13	MET
1	B	15	LYS
1	B	17	LYS
1	B	20	ILE
1	B	21	THR
1	B	28	THR
1	B	29	SER
1	B	35	PHE
1	B	69	LYS
1	B	79	CYS

Some sidechains can be flipped to improve hydrogen bonding and reduce clashes. All (4) such sidechains are listed below:

Mol	Chain	Res	Type
1	A	8	ASN
1	A	31	HIS
1	B	31	HIS
1	B	55	ASN

5.3.3 RNA [i](#)

There are no RNA molecules in this entry.

5.4 Non-standard residues in protein, DNA, RNA chains [i](#)

There are no non-standard protein/DNA/RNA residues in this entry.

5.5 Carbohydrates [i](#)

There are no carbohydrates in this entry.

5.6 Ligand geometry [i](#)

2 ligands are modelled in this entry.

In the following table, the Counts columns list the number of bonds (or angles) for which Mogul statistics could be retrieved, the number of bonds (or angles) that are observed in the model and the number of bonds (or angles) that are defined in the Chemical Component Dictionary. The Link column lists molecule types, if any, to which the group is linked. The Z score for a bond length (or angle) is the number of standard deviations the observed value is removed from the expected value. A bond length (or angle) with $|Z| > 2$ is considered an outlier worth inspection. RMSZ is the root-mean-square of all Z scores of the bond lengths (or angles).

Mol	Type	Chain	Res	Link	Bond lengths			Bond angles		
					Counts	RMSZ	# Z > 2	Counts	RMSZ	# Z > 2
2	AMH	A	90	-	8,11,11	2.16	1 (12%)	10,14,14	2.65	4 (40%)
2	AMH	B	90	-	8,11,11	2.70	3 (37%)	10,14,14	1.83	5 (50%)

In the following table, the Chirals column lists the number of chiral outliers, the number of chiral centers analysed, the number of these observed in the model and the number defined in the Chemical Component Dictionary. Similar counts are reported in the Torsion and Rings columns. '-' means no outliers of that kind were identified.

Mol	Type	Chain	Res	Link	Chirals	Torsions	Rings
2	AMH	A	90	-	-	0/2/16/16	0/1/1/1
2	AMH	B	90	-	-	0/2/16/16	0/1/1/1

All (4) bond length outliers are listed below:

Mol	Chain	Res	Type	Atoms	Z	Observed(Å)	Ideal(Å)
2	B	90	AMH	C3-C2	-2.59	1.46	1.52
2	B	90	AMH	C5-C4	2.12	1.58	1.52
2	A	90	AMH	C7-C4	4.93	1.62	1.51
2	B	90	AMH	C7-C4	6.58	1.65	1.51

All (9) bond angle outliers are listed below:

Mol	Chain	Res	Type	Atoms	Z	Observed(°)	Ideal(°)
2	B	90	AMH	C5-C6-C1	-2.27	106.10	110.53
2	B	90	AMH	C3-C4-C7	-2.22	106.58	111.47
2	B	90	AMH	C6-C5-C4	-2.16	108.84	112.42
2	A	90	AMH	C3-C4-C7	2.20	116.32	111.47
2	B	90	AMH	C6-C1-C2	2.27	114.28	109.48
2	B	90	AMH	C6-C1-C8	2.62	117.44	111.88
2	A	90	AMH	C5-C4-C3	3.20	117.06	109.28
2	A	90	AMH	C2-C1-C8	3.87	120.10	111.88
2	A	90	AMH	C6-C1-C2	5.84	121.81	109.48

There are no chirality outliers.

There are no torsion outliers.

There are no ring outliers.

2 monomers are involved in 3 short contacts:

Mol	Chain	Res	Type	Clashes	Symm-Clashes
2	A	90	AMH	1	0
2	B	90	AMH	2	0

5.7 Other polymers [i](#)

There are no such residues in this entry.

5.8 Polymer linkage issues [i](#)

There are no chain breaks in this entry.

6 Fit of model and data [i](#)

6.1 Protein, DNA and RNA chains [i](#)

EDS was not executed - this section is therefore empty.

6.2 Non-standard residues in protein, DNA, RNA chains [i](#)

EDS was not executed - this section is therefore empty.

6.3 Carbohydrates [i](#)

EDS was not executed - this section is therefore empty.

6.4 Ligands [i](#)

EDS was not executed - this section is therefore empty.

6.5 Other polymers [i](#)

EDS was not executed - this section is therefore empty.