



# Full wwPDB X-ray Structure Validation Report ⓘ

Jan 5, 2025 – 10:04 PM EST

PDB ID : 9CF9  
Title : SARS-CoV-2 3CL Protease complexed with covalent inhibitor BC787  
Authors : Hoffpauir, Z.A.; Meneely, K.M.; Lamb, A.L.  
Deposited on : 2024-06-27  
Resolution : 2.00 Å(reported)

This is a Full wwPDB X-ray Structure Validation Report for a publicly released PDB entry.

We welcome your comments at [validation@mail.wwpdb.org](mailto:validation@mail.wwpdb.org)

A user guide is available at

<https://www.wwpdb.org/validation/2017/XrayValidationReportHelp>

with specific help available everywhere you see the ⓘ symbol.

The types of validation reports are described at

<http://www.wwpdb.org/validation/2017/FAQs#types>.

---

The following versions of software and data (see [references ⓘ](#)) were used in the production of this report:

MolProbity : 4.02b-467  
Mogul : 2022.3.0, CSD as543be (2022)  
Xtriage (Phenix) : 1.21  
EDS : 3.0  
buster-report : 1.1.7 (2018)  
Percentile statistics : 20231227.v01 (using entries in the PDB archive December 27th 2023)  
CCP4 : 9.0.004 (Gargrove)  
Density-Fitness : 1.0.11  
Ideal geometry (proteins) : Engh & Huber (2001)  
Ideal geometry (DNA, RNA) : Parkinson et al. (1996)  
Validation Pipeline (wwPDB-VP) : 2.40

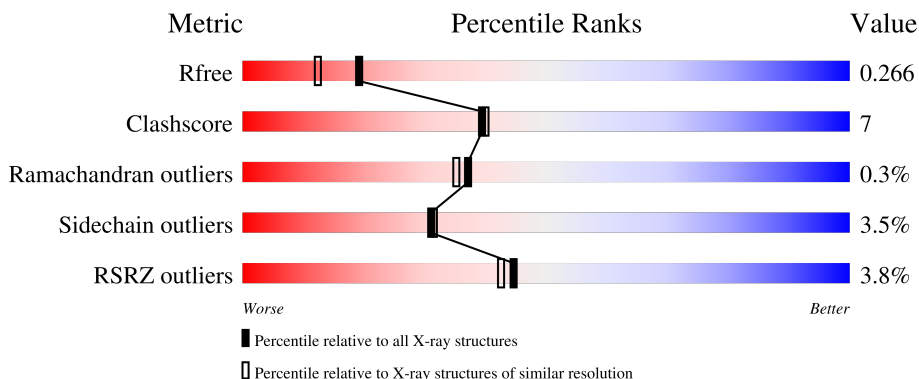
# 1 Overall quality at a glance

The following experimental techniques were used to determine the structure:

*X-RAY DIFFRACTION*

The reported resolution of this entry is 2.00 Å.

Percentile scores (ranging between 0-100) for global validation metrics of the entry are shown in the following graphic. The table shows the number of entries on which the scores are based.



Metric	Whole archive (#Entries)	Similar resolution (#Entries, resolution range(Å))
$R_{free}$	164625	9409 (2.00-2.00)
Clashscore	180529	10737 (2.00-2.00)
Ramachandran outliers	177936	10628 (2.00-2.00)
Sidechain outliers	177891	10627 (2.00-2.00)
RSRZ outliers	164620	9409 (2.00-2.00)

The table below summarises the geometric issues observed across the polymeric chains and their fit to the electron density. The red, orange, yellow and green segments of the lower bar indicate the fraction of residues that contain outliers for  $\geq 3$ , 2, 1 and 0 types of geometric quality criteria respectively. A grey segment represents the fraction of residues that are not modelled. The numeric value for each fraction is indicated below the corresponding segment, with a dot representing fractions  $\leq 5\%$ . The upper red bar (where present) indicates the fraction of residues that have poor fit to the electron density. The numeric value is given above the bar.

Mol	Chain	Length	Quality of chain
1	A	306	
1	B	306	

## 2 Entry composition [i](#)

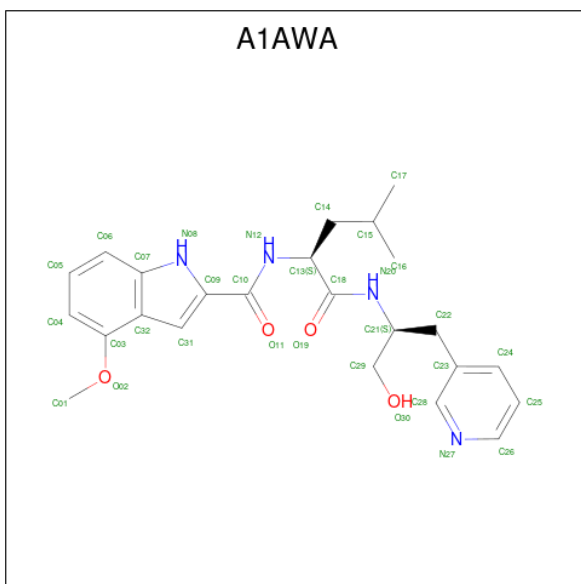
There are 3 unique types of molecules in this entry. The entry contains 9385 atoms, of which 4620 are hydrogens and 0 are deuteriums.

In the tables below, the ZeroOcc column contains the number of atoms modelled with zero occupancy, the AltConf column contains the number of residues with at least one atom in alternate conformation and the Trace column contains the number of residues modelled with at most 2 atoms.

- Molecule 1 is a protein called 3C-like proteinase nsp5.

Mol	Chain	Residues	Atoms					ZeroOcc	AltConf	Trace	
			Total	C	H	N	O				S
1	A	305	4663	1494	2305	400	442	22	0	0	0
1	B	297	4557	1459	2257	392	427	22	0	0	0

- Molecule 2 is N-[(2S)-1-[(2S)-1-hydroxy-3-(pyridin-3-yl)propan-2-yl]amino]-4-methyl-1-oxopentan-2-yl]-4-methoxy-1H-indole-2-carboxamide (three-letter code: A1AWA) (formula: C<sub>24</sub>H<sub>30</sub>N<sub>4</sub>O<sub>4</sub>) (labeled as "Ligand of Interest" by depositor).



Mol	Chain	Residues	Atoms					ZeroOcc	AltConf
			Total	C	H	N	O		
2	A	1	61	24	29	4	4	0	0
2	B	1	61	24	29	4	4	0	0

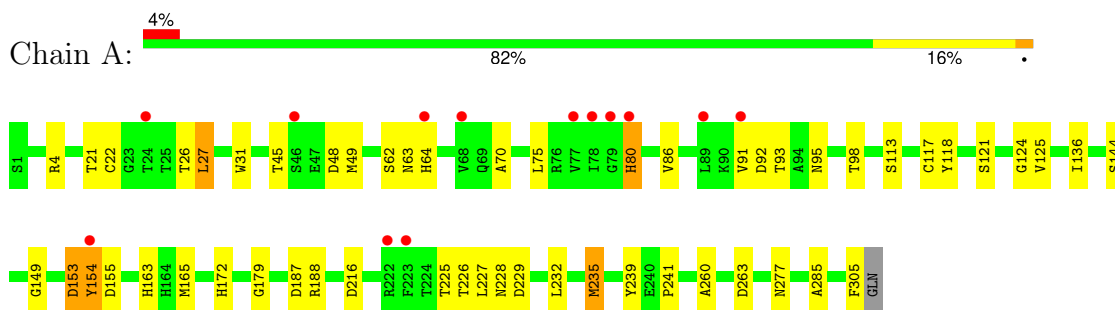
- Molecule 3 is water.

Mol	Chain	Residues	Atoms		ZeroOcc	AltConf
3	A	32	Total 32	O 32	0	0
3	B	11	Total 11	O 11	0	0

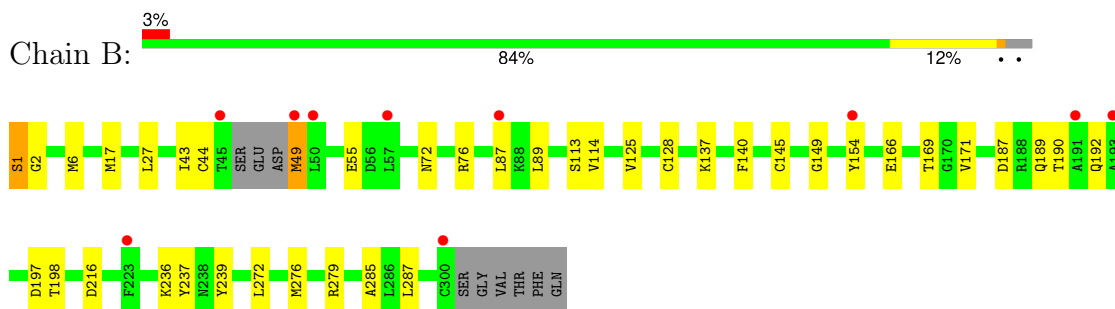
### 3 Residue-property plots [i](#)

These plots are drawn for all protein, RNA, DNA and oligosaccharide chains in the entry. The first graphic for a chain summarises the proportions of the various outlier classes displayed in the second graphic. The second graphic shows the sequence view annotated by issues in geometry and electron density. Residues are color-coded according to the number of geometric quality criteria for which they contain at least one outlier: green = 0, yellow = 1, orange = 2 and red = 3 or more. A red dot above a residue indicates a poor fit to the electron density ( $RSRZ > 2$ ). Stretches of 2 or more consecutive residues without any outlier are shown as a green connector. Residues present in the sample, but not in the model, are shown in grey.

- Molecule 1: 3C-like proteinase nsp5



- Molecule 1: 3C-like proteinase nsp5



## 4 Data and refinement statistics

Property	Value	Source
Space group	P 1 21 1	Depositor
Cell constants a, b, c, $\alpha$ , $\beta$ , $\gamma$	44.79Å 54.05Å 114.87Å 90.00° 100.49° 90.00°	Depositor
Resolution (Å)	38.71 – 2.00 38.71 – 2.00	Depositor EDS
% Data completeness (in resolution range)	98.2 (38.71-2.00) 98.4 (38.71-2.00)	Depositor EDS
$R_{merge}$	(Not available)	Depositor
$R_{sym}$	(Not available)	Depositor
$\langle I/\sigma(I) \rangle$ <sup>1</sup>	1.69 (at 2.00Å)	Xtrriage
Refinement program	PHENIX 1.20.1_4487	Depositor
R, $R_{free}$	0.212 , 0.266 0.215 , 0.266	Depositor DCC
$R_{free}$ test set	34794 reflections (5.51%)	wwPDB-VP
Wilson B-factor (Å <sup>2</sup> )	36.9	Xtrriage
Anisotropy	0.156	Xtrriage
Bulk solvent $k_{sol}$ (e/Å <sup>3</sup> ), $B_{sol}$ (Å <sup>2</sup> )	0.40 , 33.0	EDS
L-test for twinning <sup>2</sup>	$\langle  L  \rangle = 0.50$ , $\langle L^2 \rangle = 0.33$	Xtrriage
Estimated twinning fraction	0.000 for h,-k,-h-l	Xtrriage
$F_o, F_c$ correlation	0.96	EDS
Total number of atoms	9385	wwPDB-VP
Average B, all atoms (Å <sup>2</sup> )	52.0	wwPDB-VP

Xtrriage's analysis on translational NCS is as follows: *The analyses of the Patterson function reveals a significant off-origin peak that is 74.17 % of the origin peak, indicating pseudo-translational symmetry. The chance of finding a peak of this or larger height randomly in a structure without pseudo-translational symmetry is equal to 1.6058e-06. The detected translational NCS is most likely also responsible for the elevated intensity ratio.*

<sup>1</sup>Intensities estimated from amplitudes.

<sup>2</sup>Theoretical values of  $\langle |L| \rangle$ ,  $\langle L^2 \rangle$  for acentric reflections are 0.5, 0.333 respectively for untwinned datasets, and 0.375, 0.2 for perfectly twinned datasets.

## 5 Model quality [i](#)

### 5.1 Standard geometry [i](#)

Bond lengths and bond angles in the following residue types are not validated in this section: A1AWA

The Z score for a bond length (or angle) is the number of standard deviations the observed value is removed from the expected value. A bond length (or angle) with  $|Z| > 5$  is considered an outlier worth inspection. RMSZ is the root-mean-square of all Z scores of the bond lengths (or angles).

Mol	Chain	Bond lengths		Bond angles	
		RMSZ	# $ Z  > 5$	RMSZ	# $ Z  > 5$
1	A	0.68	1/2411 (0.0%)	0.79	1/3277 (0.0%)
1	B	0.67	3/2351 (0.1%)	0.76	2/3194 (0.1%)
All	All	0.68	4/4762 (0.1%)	0.77	3/6471 (0.0%)

All (4) bond length outliers are listed below:

Mol	Chain	Res	Type	Atoms	Z	Observed(Å)	Ideal(Å)
1	B	128	CYS	CB-SG	-6.64	1.71	1.82
1	B	44	CYS	CB-SG	-5.88	1.72	1.81
1	B	145	CYS	CB-SG	5.53	1.91	1.82
1	A	117	CYS	CB-SG	-5.33	1.73	1.81

All (3) bond angle outliers are listed below:

Mol	Chain	Res	Type	Atoms	Z	Observed(°)	Ideal(°)
1	B	17	MET	CG-SD-CE	6.79	111.07	100.20
1	B	187	ASP	CB-CG-OD1	5.71	123.44	118.30
1	A	187	ASP	CB-CG-OD1	5.37	123.13	118.30

There are no chirality outliers.

There are no planarity outliers.

### 5.2 Too-close contacts [i](#)

In the following table, the Non-H and H(model) columns list the number of non-hydrogen atoms and hydrogen atoms in the chain respectively. The H(added) column lists the number of hydrogen atoms added and optimized by MolProbity. The Clashes column lists the number of clashes within the asymmetric unit, whereas Symm-Clashes lists symmetry-related clashes.

Mol	Chain	Non-H	H(model)	H(added)	Clashes	Symm-Clashes
1	A	2358	2305	2305	40	0
1	B	2300	2257	2256	23	0
2	A	32	29	0	2	0
2	B	32	29	0	1	0
3	A	32	0	0	0	0
3	B	11	0	0	0	0
All	All	4765	4620	4561	61	0

The all-atom clashscore is defined as the number of clashes found per 1000 atoms (including hydrogen atoms). The all-atom clashscore for this structure is 7.

All (61) close contacts within the same asymmetric unit are listed below, sorted by their clash magnitude.

Atom-1	Atom-2	Interatomic distance (Å)	Clash overlap (Å)
1:A:21:THR:HG23	1:A:26:THR:HG22	1.58	0.84
1:B:87:LEU:HD21	1:B:89:LEU:HD21	1.65	0.78
1:B:279:ARG:HH11	1:B:279:ARG:HG3	1.47	0.77
1:A:80:HIS:ND1	1:A:80:HIS:O	2.18	0.77
1:A:226:THR:HG22	1:A:229:ASP:OD2	1.85	0.77
1:B:236:LYS:HE3	1:B:237:TYR:CE2	2.23	0.73
1:B:169:THR:HG23	1:B:171:VAL:HG22	1.71	0.72
1:B:87:LEU:CD2	1:B:89:LEU:HD21	2.21	0.70
1:A:153:ASP:O	1:A:155:ASP:N	2.28	0.67
1:A:228:ASN:O	1:A:232:LEU:HD23	1.98	0.62
1:B:55:GLU:OE1	1:B:55:GLU:N	2.32	0.59
1:A:92:ASP:OD1	1:A:93:THR:N	2.36	0.58
1:A:225:THR:HG22	1:A:226:THR:O	2.06	0.56
1:A:235:MET:HE3	1:A:239:TYR:O	2.07	0.55
1:A:225:THR:HG22	1:A:226:THR:N	2.23	0.54
2:A:401:A1AWA:O11	2:A:401:A1AWA:O19	2.25	0.54
1:A:92:ASP:OD1	1:A:93:THR:HG23	2.08	0.54
1:A:86:VAL:HG13	1:A:179:GLY:HA2	1.89	0.53
1:A:113:SER:O	1:A:149:GLY:HA2	2.09	0.53
1:B:190:THR:HG23	1:B:192:GLN:CG	2.39	0.53
1:A:124:GLY:HA3	1:B:6:MET:HE3	1.92	0.51
1:B:279:ARG:HG3	1:B:279:ARG:NH1	2.20	0.50
1:A:235:MET:HE1	1:A:241:PRO:N	2.27	0.49
1:B:190:THR:HG23	1:B:192:GLN:HG3	1.93	0.49
1:A:118:TYR:CE2	1:A:144:SER:HB3	2.48	0.49
1:B:197:ASP:O	1:B:198:THR:HG23	2.13	0.48
1:A:260:ALA:O	1:A:263:ASP:HB2	2.14	0.48
1:A:285:ALA:HB3	1:B:285:ALA:HB3	1.96	0.46

*Continued on next page...*



*Continued from previous page...*

Atom-1	Atom-2	Interatomic distance (Å)	Clash overlap (Å)
1:A:75:LEU:HD23	1:A:91:VAL:HG21	1.97	0.46
1:B:276:MET:HE2	1:B:279:ARG:O	2.16	0.46
1:A:49:MET:CE	2:A:401:A1AWA:O11	2.63	0.46
1:B:113:SER:O	1:B:149:GLY:HA2	2.16	0.45
1:B:114:VAL:HG11	1:B:140:PHE:CZ	2.52	0.45
1:B:287:LEU:HD23	1:B:287:LEU:HA	1.80	0.45
1:B:1:SER:OG	1:B:2:GLY:N	2.49	0.44
1:A:226:THR:HG22	1:A:229:ASP:CG	2.36	0.44
1:A:235:MET:CE	1:A:239:TYR:O	2.66	0.44
1:A:163:HIS:CE1	1:A:172:HIS:HB3	2.53	0.44
1:A:226:THR:HG23	1:A:228:ASN:H	1.81	0.44
1:A:70:ALA:CB	1:A:75:LEU:HD11	2.48	0.44
1:A:226:THR:HG23	1:A:228:ASN:N	2.33	0.44
1:A:225:THR:CG2	1:A:226:THR:N	2.82	0.43
1:B:49:MET:HB3	1:B:189:GLN:HG3	1.99	0.43
1:A:27:LEU:HD12	1:A:27:LEU:C	2.39	0.43
1:A:95:ASN:HB3	1:A:98:THR:OG1	2.19	0.43
1:A:225:THR:HG23	1:A:229:ASP:HB2	2.01	0.42
1:A:31:TRP:CE2	1:A:75:LEU:HD21	2.54	0.42
1:A:227:LEU:HD12	1:A:227:LEU:HA	1.90	0.42
1:B:43:ILE:O	1:B:43:ILE:HG13	2.19	0.42
1:B:6:MET:HE3	1:B:6:MET:HB3	1.85	0.41
1:A:45:THR:H	1:A:48:ASP:HB2	1.85	0.41
1:A:125:VAL:HG11	1:B:125:VAL:HG11	2.02	0.41
1:A:154:TYR:HA	1:A:305:PHE:HD1	1.86	0.41
1:A:62:SER:O	1:A:63:ASN:C	2.59	0.41
1:A:136:ILE:HD13	1:A:136:ILE:HG21	1.79	0.41
1:B:239:TYR:CZ	1:B:272:LEU:HD21	2.55	0.41
1:A:31:TRP:CZ2	1:A:75:LEU:HD21	2.56	0.41
1:A:70:ALA:HB2	1:A:75:LEU:HD11	2.02	0.41
1:A:62:SER:HB3	1:A:64:HIS:CE1	2.56	0.40
1:A:21:THR:CG2	1:A:26:THR:HG22	2.42	0.40
1:B:166:GLU:O	2:B:401:A1AWA:N08	2.54	0.40

There are no symmetry-related clashes.

## 5.3 Torsion angles [i](#)

### 5.3.1 Protein backbone [i](#)

In the following table, the Percentiles column shows the percent Ramachandran outliers of the chain as a percentile score with respect to all X-ray entries followed by that with respect to entries of similar resolution.

The Analysed column shows the number of residues for which the backbone conformation was analysed, and the total number of residues.

Mol	Chain	Analysed	Favoured	Allowed	Outliers	Percentiles	
1	A	303/306 (99%)	292 (96%)	10 (3%)	1 (0%)	37	35
1	B	293/306 (96%)	285 (97%)	7 (2%)	1 (0%)	37	35
All	All	596/612 (97%)	577 (97%)	17 (3%)	2 (0%)	37	35

All (2) Ramachandran outliers are listed below:

Mol	Chain	Res	Type
1	A	154	TYR
1	B	154	TYR

### 5.3.2 Protein sidechains [i](#)

In the following table, the Percentiles column shows the percent sidechain outliers of the chain as a percentile score with respect to all X-ray entries followed by that with respect to entries of similar resolution.

The Analysed column shows the number of residues for which the sidechain conformation was analysed, and the total number of residues.

Mol	Chain	Analysed	Rotameric	Outliers	Percentiles	
1	A	262/263 (100%)	251 (96%)	11 (4%)	25	24
1	B	255/263 (97%)	248 (97%)	7 (3%)	40	42
All	All	517/526 (98%)	499 (96%)	18 (4%)	31	31

All (18) residues with a non-rotameric sidechain are listed below:

Mol	Chain	Res	Type
1	A	4	ARG
1	A	22	CYS
1	A	27	LEU
1	A	80	HIS

*Continued on next page...*

*Continued from previous page...*

Mol	Chain	Res	Type
1	A	121	SER
1	A	153	ASP
1	A	165	MET
1	A	188	ARG
1	A	216	ASP
1	A	235	MET
1	A	277	ASN
1	B	1	SER
1	B	27	LEU
1	B	49	MET
1	B	72	ASN
1	B	76	ARG
1	B	137	LYS
1	B	216	ASP

Sometimes sidechains can be flipped to improve hydrogen bonding and reduce clashes. All (2) such sidechains are listed below:

Mol	Chain	Res	Type
1	A	189	GLN
1	B	256	GLN

### 5.3.3 RNA [i](#)

There are no RNA molecules in this entry.

## 5.4 Non-standard residues in protein, DNA, RNA chains [i](#)

There are no non-standard protein/DNA/RNA residues in this entry.

## 5.5 Carbohydrates [i](#)

There are no oligosaccharides in this entry.

## 5.6 Ligand geometry [i](#)

2 ligands are modelled in this entry.

In the following table, the Counts columns list the number of bonds (or angles) for which Mogul statistics could be retrieved, the number of bonds (or angles) that are observed in the model and

the number of bonds (or angles) that are defined in the Chemical Component Dictionary. The Link column lists molecule types, if any, to which the group is linked. The Z score for a bond length (or angle) is the number of standard deviations the observed value is removed from the expected value. A bond length (or angle) with  $|Z| > 2$  is considered an outlier worth inspection. RMSZ is the root-mean-square of all Z scores of the bond lengths (or angles).

Mol	Type	Chain	Res	Link	Bond lengths			Bond angles		
					Counts	RMSZ	# Z  > 2	Counts	RMSZ	# Z  > 2
2	A1AWA	A	401	1	32,34,34	1.89	6 (18%)	42,46,46	3.45	18 (42%)
2	A1AWA	B	401	1	32,34,34	1.85	6 (18%)	42,46,46	2.19	13 (30%)

In the following table, the Chirals column lists the number of chiral outliers, the number of chiral centers analysed, the number of these observed in the model and the number defined in the Chemical Component Dictionary. Similar counts are reported in the Torsion and Rings columns. '-' means no outliers of that kind were identified.

Mol	Type	Chain	Res	Link	Chirals	Torsions	Rings
2	A1AWA	A	401	1	-	10/25/28/28	0/3/3/3
2	A1AWA	B	401	1	-	9/25/28/28	0/3/3/3

All (12) bond length outliers are listed below:

Mol	Chain	Res	Type	Atoms	Z	Observed(Å)	Ideal(Å)
2	B	401	A1AWA	C18-N20	5.82	1.46	1.34
2	A	401	A1AWA	C10-N12	5.78	1.47	1.34
2	B	401	A1AWA	C29-C21	5.75	1.62	1.52
2	A	401	A1AWA	C29-C21	3.87	1.59	1.52
2	A	401	A1AWA	C18-N20	3.70	1.42	1.34
2	B	401	A1AWA	C10-N12	3.59	1.42	1.34
2	A	401	A1AWA	O11-C10	-3.48	1.15	1.23
2	A	401	A1AWA	O19-C18	-3.02	1.17	1.23
2	A	401	A1AWA	O02-C03	2.54	1.41	1.36
2	B	401	A1AWA	O11-C10	-2.39	1.17	1.23
2	B	401	A1AWA	O19-C18	-2.27	1.19	1.23
2	B	401	A1AWA	C13-N12	-2.09	1.41	1.45

All (31) bond angle outliers are listed below:

Mol	Chain	Res	Type	Atoms	Z	Observed(°)	Ideal(°)
2	A	401	A1AWA	C29-C21-N20	-10.34	87.56	109.63
2	A	401	A1AWA	C22-C21-N20	8.32	126.18	110.34
2	A	401	A1AWA	O19-C18-N20	-7.73	109.13	122.96
2	A	401	A1AWA	C13-C18-N20	6.75	131.03	116.63

*Continued on next page...*

*Continued from previous page...*

Mol	Chain	Res	Type	Atoms	Z	Observed(°)	Ideal(°)
2	B	401	A1AWA	C22-C21-C29	-6.59	97.83	111.82
2	A	401	A1AWA	O02-C03-C32	6.00	121.64	114.56
2	A	401	A1AWA	C18-C13-N12	-5.80	95.43	111.11
2	B	401	A1AWA	C22-C23-C28	-5.38	112.83	121.56
2	A	401	A1AWA	C22-C21-C29	-4.95	101.31	111.82
2	A	401	A1AWA	C09-C10-N12	4.91	124.62	115.19
2	B	401	A1AWA	O02-C03-C32	4.82	120.25	114.56
2	B	401	A1AWA	C01-O02-C03	-4.74	109.79	117.67
2	A	401	A1AWA	C01-O02-C03	-4.22	110.66	117.67
2	A	401	A1AWA	O11-C10-N12	-3.84	115.17	122.47
2	B	401	A1AWA	C24-C23-C28	3.83	122.73	117.10
2	A	401	A1AWA	O02-C03-C04	-2.79	119.57	124.28
2	A	401	A1AWA	C09-N08-C07	2.78	110.25	104.45
2	B	401	A1AWA	C23-C28-N27	-2.77	118.45	123.75
2	A	401	A1AWA	C23-C22-C21	-2.67	107.83	113.71
2	A	401	A1AWA	C21-N20-C18	2.55	127.39	123.29
2	B	401	A1AWA	C25-C24-C23	-2.46	117.15	120.61
2	B	401	A1AWA	C26-N27-C28	2.44	121.13	116.85
2	A	401	A1AWA	C17-C15-C14	-2.44	102.32	111.08
2	A	401	A1AWA	C25-C24-C23	-2.39	117.25	120.61
2	B	401	A1AWA	C09-N08-C07	2.36	109.37	104.45
2	B	401	A1AWA	C15-C14-C13	-2.34	109.11	115.40
2	B	401	A1AWA	C29-C21-N20	-2.18	104.99	109.63
2	B	401	A1AWA	O02-C03-C04	-2.16	120.65	124.28
2	A	401	A1AWA	C22-C23-C28	-2.14	118.09	121.56
2	B	401	A1AWA	C09-C10-N12	2.09	119.21	115.19
2	A	401	A1AWA	C26-N27-C28	2.01	120.37	116.85

There are no chirality outliers.

All (19) torsion outliers are listed below:

Mol	Chain	Res	Type	Atoms
2	A	401	A1AWA	C31-C09-C10-O11
2	A	401	A1AWA	C29-C21-C22-C23
2	A	401	A1AWA	N20-C21-C22-C23
2	A	401	A1AWA	C22-C21-N20-C18
2	B	401	A1AWA	C29-C21-C22-C23
2	B	401	A1AWA	N20-C21-C22-C23
2	B	401	A1AWA	C21-C22-C23-C28
2	A	401	A1AWA	C04-C03-O02-C01
2	A	401	A1AWA	C32-C03-O02-C01
2	B	401	A1AWA	C32-C03-O02-C01

*Continued on next page...*

*Continued from previous page...*

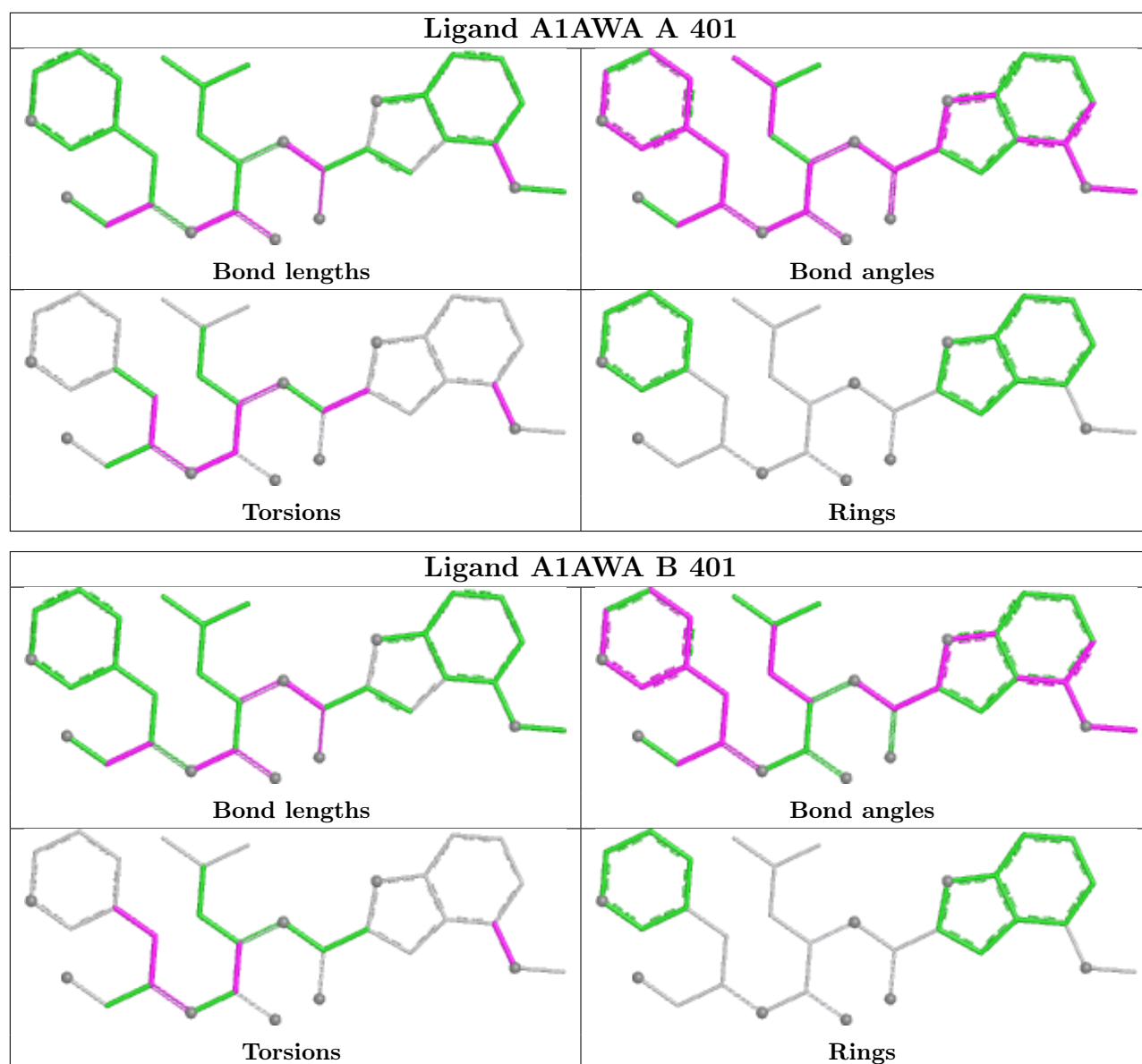
Mol	Chain	Res	Type	Atoms
2	B	401	A1AWA	C04-C03-O02-C01
2	A	401	A1AWA	O19-C18-N20-C21
2	A	401	A1AWA	C14-C13-N12-C10
2	A	401	A1AWA	C13-C18-N20-C21
2	B	401	A1AWA	C21-C22-C23-C24
2	B	401	A1AWA	C22-C21-N20-C18
2	A	401	A1AWA	N12-C13-C18-N20
2	B	401	A1AWA	N12-C13-C18-O19
2	B	401	A1AWA	N12-C13-C18-N20

There are no ring outliers.

2 monomers are involved in 3 short contacts:

Mol	Chain	Res	Type	Clashes	Symm-Clashes
2	A	401	A1AWA	2	0
2	B	401	A1AWA	1	0

The following is a two-dimensional graphical depiction of Mogul quality analysis of bond lengths, bond angles, torsion angles, and ring geometry for all instances of the Ligand of Interest. In addition, ligands with molecular weight > 250 and outliers as shown on the validation Tables will also be included. For torsion angles, if less than 5% of the Mogul distribution of torsion angles is within 10 degrees of the torsion angle in question, then that torsion angle is considered an outlier. Any bond that is central to one or more torsion angles identified as an outlier by Mogul will be highlighted in the graph. For rings, the root-mean-square deviation (RMSD) between the ring in question and similar rings identified by Mogul is calculated over all ring torsion angles. If the average RMSD is greater than 60 degrees and the minimal RMSD between the ring in question and any Mogul-identified rings is also greater than 60 degrees, then that ring is considered an outlier. The outliers are highlighted in purple. The color gray indicates Mogul did not find sufficient equivalents in the CSD to analyse the geometry.



## 5.7 Other polymers [i](#)

There are no such residues in this entry.

## 5.8 Polymer linkage issues [i](#)

There are no chain breaks in this entry.

## 6 Fit of model and data

### 6.1 Protein, DNA and RNA chains

In the following table, the column labelled ‘#RSRZ > 2’ contains the number (and percentage) of RSRZ outliers, followed by percent RSRZ outliers for the chain as percentile scores relative to all X-ray entries and entries of similar resolution. The OWAB column contains the minimum, median, 95<sup>th</sup> percentile and maximum values of the occupancy-weighted average B-factor per residue. The column labelled ‘Q < 0.9’ lists the number of (and percentage) of residues with an average occupancy less than 0.9.

Mol	Chain	Analysed	<RSRZ>	#RSRZ>2	OWAB(Å <sup>2</sup> )	Q<0.9
1	A	305/306 (99%)	0.20	13 (4%) 40 38	28, 48, 78, 105	0
1	B	297/306 (97%)	0.19	10 (3%) 48 46	29, 51, 79, 106	0
All	All	602/612 (98%)	0.20	23 (3%) 44 42	28, 50, 79, 106	0

All (23) RSRZ outliers are listed below:

Mol	Chain	Res	Type	RSRZ
1	B	45	THR	4.9
1	A	24	THR	3.0
1	B	300	CYS	2.8
1	A	79	GLY	2.6
1	B	49	MET	2.5
1	A	64	HIS	2.5
1	B	223	PHE	2.4
1	A	78	ILE	2.4
1	A	222	ARG	2.4
1	A	68	VAL	2.4
1	A	154	TYR	2.4
1	A	77	VAL	2.3
1	A	91	VAL	2.3
1	B	57	LEU	2.3
1	A	46	SER	2.3
1	B	87	LEU	2.2
1	B	191	ALA	2.2
1	B	193	ALA	2.2
1	B	154	TYR	2.2
1	A	223	PHE	2.1
1	A	89	LEU	2.1
1	B	50	LEU	2.1
1	A	80	HIS	2.0



## 6.2 Non-standard residues in protein, DNA, RNA chains [i](#)

There are no non-standard protein/DNA/RNA residues in this entry.

## 6.3 Carbohydrates [i](#)

There are no monosaccharides in this entry.

## 6.4 Ligands [i](#)

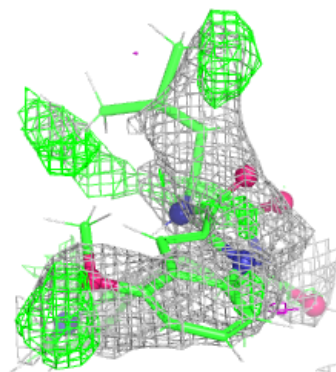
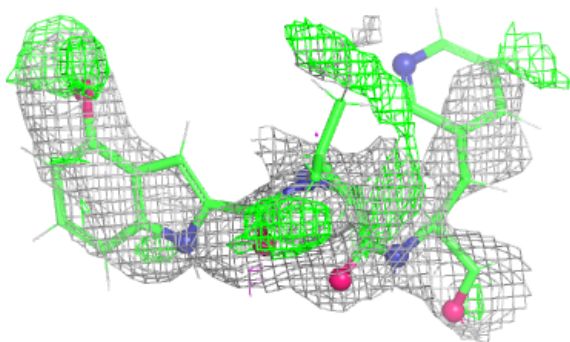
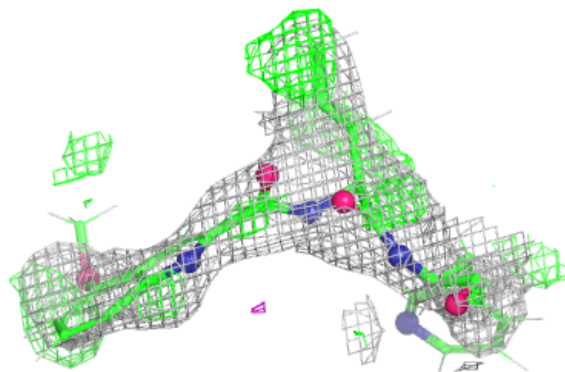
In the following table, the Atoms column lists the number of modelled atoms in the group and the number defined in the chemical component dictionary. The B-factors column lists the minimum, median, 95<sup>th</sup> percentile and maximum values of B factors of atoms in the group. The column labelled 'Q < 0.9' lists the number of atoms with occupancy less than 0.9.

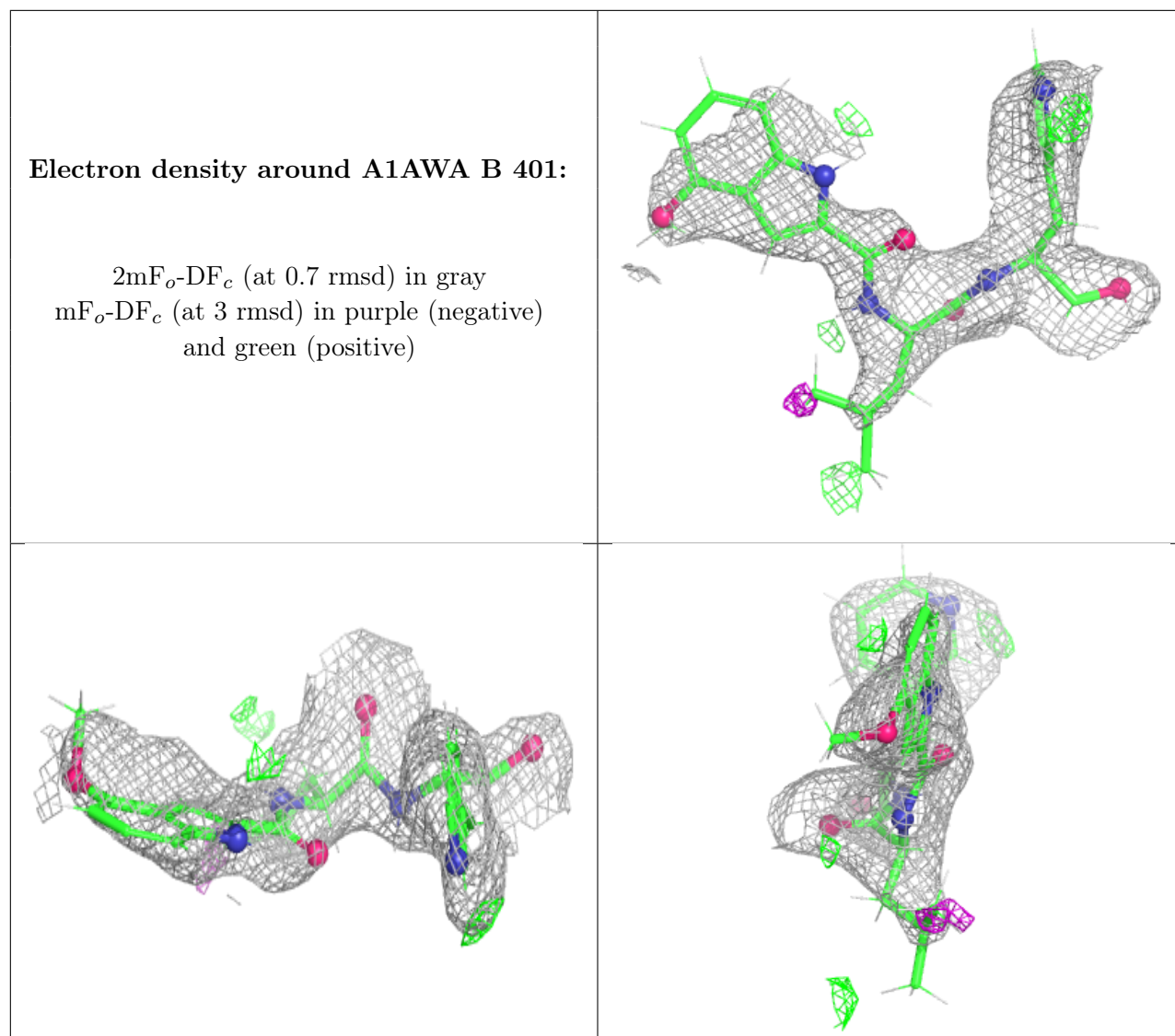
Mol	Type	Chain	Res	Atoms	RSCC	RSR	B-factors(Å <sup>2</sup> )	Q<0.9
2	A1AWA	A	401	32/32	0.67	0.26	72,123,163,173	0
2	A1AWA	B	401	32/32	0.79	0.15	49,74,96,108	0

The following is a graphical depiction of the model fit to experimental electron density of all instances of the Ligand of Interest. In addition, ligands with molecular weight > 250 and outliers as shown on the geometry validation Tables will also be included. Each fit is shown from different orientation to approximate a three-dimensional view.

**Electron density around A1AWA A 401:**

$2mF_o-DF_c$  (at 0.7 rmsd) in gray  
 $mF_o-DF_c$  (at 3 rmsd) in purple (negative)  
and green (positive)





## 6.5 Other polymers [i](#)

There are no such residues in this entry.