



Full wwPDB EM Validation Report ⓘ

Mar 3, 2025 – 12:57 PM EST

PDB ID : 9CFV
EMDB ID : EMD-45564
Title : Cryo-EM structure of delta-NTR myosin-1c bound to F-actin
Authors : Chavali, S.S.; Sindelar, C.V.; Ostap, M.E.
Deposited on : 2024-06-27
Resolution : 2.70 Å (reported)

This is a Full wwPDB EM Validation Report for a publicly released PDB entry.

We welcome your comments at validation@mail.wwpdb.org

A user guide is available at

<https://www.wwpdb.org/validation/2017/EMValidationReportHelp>

with specific help available everywhere you see the ⓘ symbol.

The types of validation reports are described at

<http://www.wwpdb.org/validation/2017/FAQs#types>.

The following versions of software and data (see [references ⓘ](#)) were used in the production of this report:

EMDB validation analysis : 0.0.1.dev117
Mogul : 2022.3.0, CSD as543be (2022)
MolProbity : 4.02b-467
buster-report : 1.1.7 (2018)
Percentile statistics : 20231227.v01 (using entries in the PDB archive December 27th 2023)
MapQ : 1.9.13
Ideal geometry (proteins) : Engh & Huber (2001)
Ideal geometry (DNA, RNA) : Parkinson et al. (1996)
Validation Pipeline (wwPDB-VP) : 2.41.4

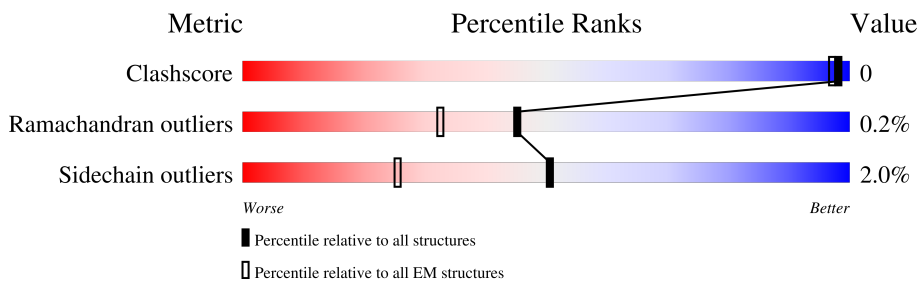
1 Overall quality at a glance

The following experimental techniques were used to determine the structure:

ELECTRON MICROSCOPY

The reported resolution of this entry is 2.70 Å.

Percentile scores (ranging between 0-100) for global validation metrics of the entry are shown in the following graphic. The table shows the number of entries on which the scores are based.



Metric	Whole archive (#Entries)	EM structures (#Entries)
Clashscore	210492	15764
Ramachandran outliers	207382	16835
Sidechain outliers	206894	16415

The table below summarises the geometric issues observed across the polymeric chains and their fit to the map. The red, orange, yellow and green segments of the bar indicate the fraction of residues that contain outliers for ≥ 3 , 2, 1 and 0 types of geometric quality criteria respectively. A grey segment represents the fraction of residues that are not modelled. The numeric value for each fraction is indicated below the corresponding segment, with a dot representing fractions $\leq 5\%$. The upper red bar (where present) indicates the fraction of residues that have poor fit to the EM map (all-atom inclusion $< 40\%$). The numeric value is given above the bar.

Mol	Chain	Length	Quality of chain
1	B	375	
1	C	375	
1	D	375	
2	P	793	
3	R	148	

2 Entry composition

There are 5 unique types of molecules in this entry. The entry contains 15664 atoms, of which 0 are hydrogens and 0 are deuteriums.

In the tables below, the AltConf column contains the number of residues with at least one atom in alternate conformation and the Trace column contains the number of residues modelled with at most 2 atoms.

- Molecule 1 is a protein called Actin, alpha skeletal muscle.

Mol	Chain	Residues	Atoms					AltConf	Trace
			Total	C	N	O	S		
1	B	361	2826	1790	475	542	19	0	0
1	C	372	2904	1836	490	557	21	0	0
1	D	371	2896	1832	489	554	21	0	0

- Molecule 2 is a protein called Unconventional myosin-Ic.

Mol	Chain	Residues	Atoms					AltConf	Trace
			Total	C	N	O	S		
2	P	709	5789	3684	1023	1061	21	0	0

There are 73 discrepancies between the modelled and reference sequences:

Chain	Residue	Modelled	Actual	Comment	Reference
P	721	ARG	-	expression tag	UNP Q9WTI7
P	722	VAL	-	expression tag	UNP Q9WTI7
P	723	LYS	-	expression tag	UNP Q9WTI7
P	724	ARG	-	expression tag	UNP Q9WTI7
P	725	SER	-	expression tag	UNP Q9WTI7
P	726	ALA	-	expression tag	UNP Q9WTI7
P	727	ILE	-	expression tag	UNP Q9WTI7
P	728	CYS	-	expression tag	UNP Q9WTI7
P	729	ILE	-	expression tag	UNP Q9WTI7
P	730	GLN	-	expression tag	UNP Q9WTI7
P	731	SER	-	expression tag	UNP Q9WTI7
P	732	TRP	-	expression tag	UNP Q9WTI7
P	733	TRP	-	expression tag	UNP Q9WTI7
P	734	ARG	-	expression tag	UNP Q9WTI7
P	735	GLY	-	expression tag	UNP Q9WTI7
P	736	THR	-	expression tag	UNP Q9WTI7
P	737	LEU	-	expression tag	UNP Q9WTI7

Continued on next page...

Continued from previous page...

Chain	Residue	Modelled	Actual	Comment	Reference
P	738	GLY	-	expression tag	UNP Q9WTI7
P	739	ARG	-	expression tag	UNP Q9WTI7
P	740	ARG	-	expression tag	UNP Q9WTI7
P	741	LYS	-	expression tag	UNP Q9WTI7
P	742	ALA	-	expression tag	UNP Q9WTI7
P	743	ALA	-	expression tag	UNP Q9WTI7
P	744	LYS	-	expression tag	UNP Q9WTI7
P	745	ARG	-	expression tag	UNP Q9WTI7
P	746	LYS	-	expression tag	UNP Q9WTI7
P	747	TRP	-	expression tag	UNP Q9WTI7
P	748	ALA	-	expression tag	UNP Q9WTI7
P	749	ALA	-	expression tag	UNP Q9WTI7
P	750	GLN	-	expression tag	UNP Q9WTI7
P	751	THR	-	expression tag	UNP Q9WTI7
P	752	ILE	-	expression tag	UNP Q9WTI7
P	753	ARG	-	expression tag	UNP Q9WTI7
P	754	ARG	-	expression tag	UNP Q9WTI7
P	755	LEU	-	expression tag	UNP Q9WTI7
P	756	ILE	-	expression tag	UNP Q9WTI7
P	757	ARG	-	expression tag	UNP Q9WTI7
P	758	GLY	-	expression tag	UNP Q9WTI7
P	759	PHE	-	expression tag	UNP Q9WTI7
P	760	ILE	-	expression tag	UNP Q9WTI7
P	761	LEU	-	expression tag	UNP Q9WTI7
P	762	ARG	-	expression tag	UNP Q9WTI7
P	763	HIS	-	expression tag	UNP Q9WTI7
P	764	SER	-	expression tag	UNP Q9WTI7
P	765	PRO	-	expression tag	UNP Q9WTI7
P	766	ARG	-	expression tag	UNP Q9WTI7
P	767	CYS	-	expression tag	UNP Q9WTI7
P	768	GLY	-	expression tag	UNP Q9WTI7
P	769	GLY	-	expression tag	UNP Q9WTI7
P	770	LEU	-	expression tag	UNP Q9WTI7
P	771	ASN	-	expression tag	UNP Q9WTI7
P	772	ASP	-	expression tag	UNP Q9WTI7
P	773	ILE	-	expression tag	UNP Q9WTI7
P	774	PHE	-	expression tag	UNP Q9WTI7
P	775	GLU	-	expression tag	UNP Q9WTI7
P	776	ALA	-	expression tag	UNP Q9WTI7
P	777	GLN	-	expression tag	UNP Q9WTI7
P	778	LYS	-	expression tag	UNP Q9WTI7
P	779	ILE	-	expression tag	UNP Q9WTI7

Continued on next page...

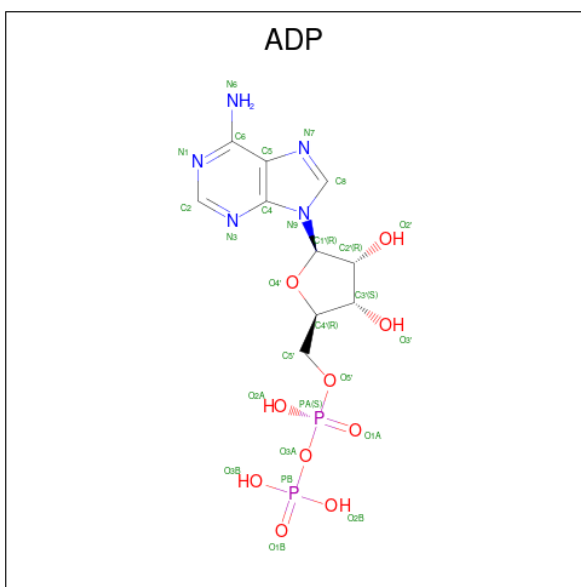
Continued from previous page...

Chain	Residue	Modelled	Actual	Comment	Reference
P	780	GLU	-	expression tag	UNP Q9WTI7
P	781	TRP	-	expression tag	UNP Q9WTI7
P	782	HIS	-	expression tag	UNP Q9WTI7
P	783	GLU	-	expression tag	UNP Q9WTI7
P	784	ALA	-	expression tag	UNP Q9WTI7
P	785	ALA	-	expression tag	UNP Q9WTI7
P	786	ASP	-	expression tag	UNP Q9WTI7
P	787	TYR	-	expression tag	UNP Q9WTI7
P	788	LYS	-	expression tag	UNP Q9WTI7
P	789	ASP	-	expression tag	UNP Q9WTI7
P	790	ASP	-	expression tag	UNP Q9WTI7
P	791	ASP	-	expression tag	UNP Q9WTI7
P	792	ASP	-	expression tag	UNP Q9WTI7
P	793	LYS	-	expression tag	UNP Q9WTI7

- Molecule 3 is a protein called Calmodulin-1.

Mol	Chain	Residues	Atoms				AltConf	Trace	
			Total	C	N	O			S
3	R	148	1165	713	187	255	10	0	0

- Molecule 4 is ADENOSINE-5'-DIPHOSPHATE (three-letter code: ADP) (formula: $C_{10}H_{15}N_5O_{10}P_2$).



Mol	Chain	Residues	Atoms					AltConf
4	B	1	Total	C	N	O	P	0
			27	10	5	10	2	
4	C	1	Total	C	N	O	P	0
			27	10	5	10	2	
4	D	1	Total	C	N	O	P	0
			27	10	5	10	2	

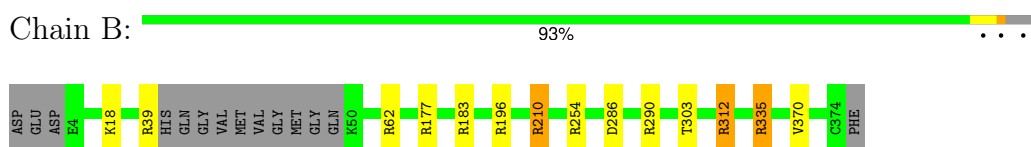
- Molecule 5 is MAGNESIUM ION (three-letter code: MG) (formula: Mg).

Mol	Chain	Residues	Atoms		AltConf
5	B	1	Total	Mg	0
			1	1	
5	C	1	Total	Mg	0
			1	1	
5	D	1	Total	Mg	0
			1	1	

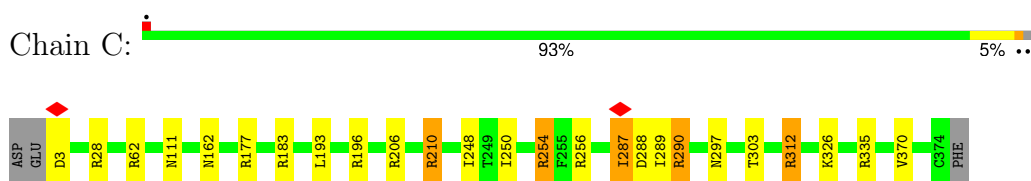
3 Residue-property plots

These plots are drawn for all protein, RNA, DNA and oligosaccharide chains in the entry. The first graphic for a chain summarises the proportions of the various outlier classes displayed in the second graphic. The second graphic shows the sequence view annotated by issues in geometry and atom inclusion in map density. Residues are color-coded according to the number of geometric quality criteria for which they contain at least one outlier: green = 0, yellow = 1, orange = 2 and red = 3 or more. A red diamond above a residue indicates a poor fit to the EM map for this residue (all-atom inclusion < 40%). Stretches of 2 or more consecutive residues without any outlier are shown as a green connector. Residues present in the sample, but not in the model, are shown in grey.

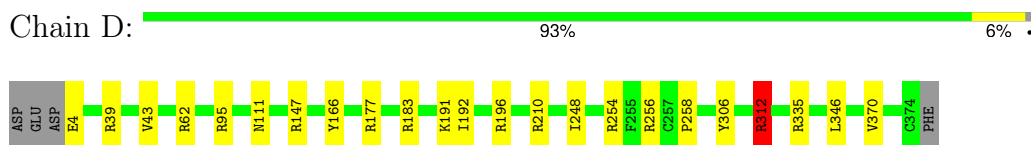
- Molecule 1: Actin, alpha skeletal muscle



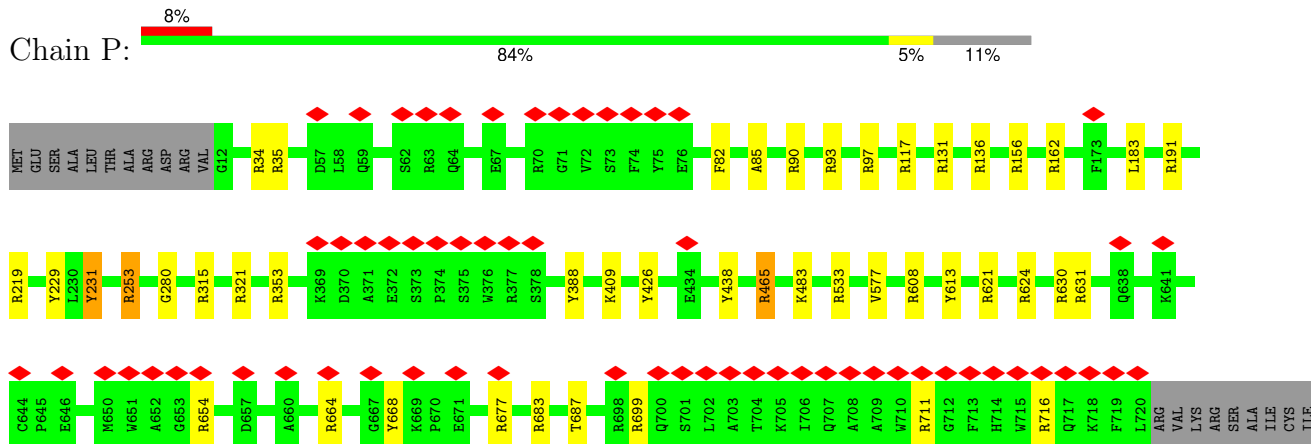
- Molecule 1: Actin, alpha skeletal muscle



- Molecule 1: Actin, alpha skeletal muscle



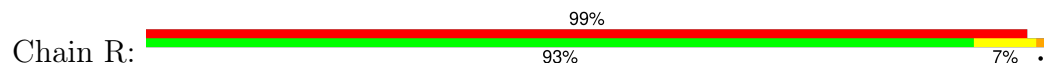
- Molecule 2: Unconventional myosin-Ic



GLN SER TRP TRP ARG GLY THR LEU GLY ARG LYS ALA ALA LYS TRP TRP ALA ALA GLN THR ILE ARG ARG LEU ILE ARG GLY PHE ILE LEU LEU HIS SER PRO ARG CYS GLY GLY LEU ASN ASP ILE PHE GLU ALA GLN LYS ILE GLU TRP HIS GLU ALA ASP TYR LYS ASP

ASP ASP ASP LYS

● Molecule 3: Calmodulin-1



M1 A2 D3 Q4 L5 T6 E7 E8 Q9 I10 A11 E12 F13 K14 E15 A16 F17 S18 L19 F20 D21 K22 D23 G24 D25 G26 T27 I28 T29 T30 K31 E32 L33 G34 T35 V36 M37 R38 S39 L40 G41 Q42 M43 P44 T45 E46 A47 E48 L49 O50 D51 M52 I53 N54 E55 V56 D57 A58 D59 G60

N61 G62 T63 I64 D65 F66 P67 E68 F69 L70 T71 M72 M73 A74 R75 K76 M77 K78 D79 T80 D81 S82 E83 E84 E85 I86 R87 E88 A89 F90 R91 V92 F93 D94 K95 D96 G97 N98 G99 Y100 I101 S102 A103 A104 E105 L106 R107 H108 V109 M110 T111 M112 L113 G114 E115 K116 L117 T118 D119 E120

E121 V122 D123 E124 M125 I126 R127 E128 A129 D130 I131 D132 G133 D134 G135 Q136 V137 M138 Y139 E140 E141 F142 V143 Q144 M145 M146 T147 A148

4 Experimental information

Property	Value	Source
EM reconstruction method	HELICAL	Depositor
Imposed symmetry	HELICAL, twist=-167.078°, rise=27.758 Å, axial sym=C1	Depositor
Number of segments used	2548251	Depositor
Resolution determination method	FSC 0.143 CUT-OFF	Depositor
CTF correction method	PHASE FLIPPING AND AMPLITUDE CORRECTION	Depositor
Microscope	TFS KRIOS	Depositor
Voltage (kV)	300	Depositor
Electron dose ($e^-/\text{Å}^2$)	50	Depositor
Minimum defocus (nm)	1200	Depositor
Maximum defocus (nm)	2500	Depositor
Magnification	Not provided	
Image detector	GATAN K3 (6k x 4k)	Depositor
Maximum map value	3.926	Depositor
Minimum map value	-2.676	Depositor
Average map value	0.001	Depositor
Map value standard deviation	0.040	Depositor
Recommended contour level	0.3	Depositor
Map size (Å)	512.64, 512.64, 512.64	wwPDB
Map dimensions	384, 384, 384	wwPDB
Map angles (°)	90.0, 90.0, 90.0	wwPDB
Pixel spacing (Å)	1.335, 1.335, 1.335	Depositor

5 Model quality i

5.1 Standard geometry i

Bond lengths and bond angles in the following residue types are not validated in this section: ADP, MG

The Z score for a bond length (or angle) is the number of standard deviations the observed value is removed from the expected value. A bond length (or angle) with $|Z| > 5$ is considered an outlier worth inspection. RMSZ is the root-mean-square of all Z scores of the bond lengths (or angles).

Mol	Chain	Bond lengths		Bond angles	
		RMSZ	# Z >5	RMSZ	# Z >5
1	B	0.62	0/2886	1.07	13/3911 (0.3%)
1	C	0.61	0/2966	1.07	13/4019 (0.3%)
1	D	0.62	0/2958	1.03	16/4008 (0.4%)
2	P	0.67	0/5913	1.07	33/7978 (0.4%)
3	R	0.69	0/1177	0.96	4/1579 (0.3%)
All	All	0.64	0/15900	1.05	79/21495 (0.4%)

Chiral center outliers are detected by calculating the chiral volume of a chiral center and verifying if the center is modelled as a planar moiety or with the opposite hand. A planarity outlier is detected by checking planarity of atoms in a peptide group, atoms in a mainchain group or atoms of a sidechain that are expected to be planar.

Mol	Chain	#Chirality outliers	#Planarity outliers
1	B	0	2
1	C	0	4
2	P	0	3
All	All	0	9

There are no bond length outliers.

All (79) bond angle outliers are listed below:

Mol	Chain	Res	Type	Atoms	Z	Observed(°)	Ideal(°)
1	C	312	ARG	NE-CZ-NH2	12.42	126.51	120.30
1	B	312	ARG	NE-CZ-NH2	11.41	126.00	120.30
2	P	191	ARG	NE-CZ-NH2	9.93	125.27	120.30
1	D	210	ARG	NE-CZ-NH2	8.90	124.75	120.30
1	D	62	ARG	NE-CZ-NH2	8.63	124.62	120.30
1	B	210	ARG	NE-CZ-NH2	8.52	124.56	120.30
1	C	312	ARG	NE-CZ-NH1	-8.52	116.04	120.30
1	C	183	ARG	NE-CZ-NH2	8.44	124.52	120.30

Continued on next page...

Continued from previous page...

Mol	Chain	Res	Type	Atoms	Z	Observed(°)	Ideal(°)
2	P	35	ARG	NE-CZ-NH2	8.14	124.37	120.30
1	B	312	ARG	NE-CZ-NH1	-8.09	116.26	120.30
1	B	183	ARG	NE-CZ-NH2	7.83	124.22	120.30
1	C	196	ARG	NE-CZ-NH2	7.83	124.22	120.30
1	C	256	ARG	NE-CZ-NH2	7.80	124.20	120.30
2	P	654	ARG	NE-CZ-NH2	7.78	124.19	120.30
1	D	183	ARG	NE-CZ-NH2	7.77	124.19	120.30
1	D	335	ARG	NE-CZ-NH2	7.64	124.12	120.30
1	B	290	ARG	NE-CZ-NH2	7.45	124.02	120.30
2	P	699	ARG	NE-CZ-NH2	7.36	123.98	120.30
1	C	335	ARG	NE-CZ-NH2	7.34	123.97	120.30
3	R	107	ARG	NE-CZ-NH2	7.26	123.93	120.30
2	P	162	ARG	NE-CZ-NH2	7.25	123.93	120.30
1	D	254	ARG	NE-CZ-NH2	7.23	123.92	120.30
2	P	465	ARG	NE-CZ-NH2	7.19	123.89	120.30
1	B	183	ARG	NE-CZ-NH1	-7.12	116.74	120.30
1	D	196	ARG	NE-CZ-NH2	7.10	123.85	120.30
1	C	210	ARG	NE-CZ-NH2	6.99	123.80	120.30
1	B	177	ARG	NE-CZ-NH1	-6.98	116.81	120.30
1	B	62	ARG	NE-CZ-NH2	6.96	123.78	120.30
1	B	196	ARG	NE-CZ-NH2	6.95	123.77	120.30
1	B	254	ARG	NE-CZ-NH2	6.92	123.76	120.30
3	R	38	ARG	NE-CZ-NH2	6.81	123.70	120.30
1	C	290	ARG	NE-CZ-NH2	6.79	123.69	120.30
1	C	62	ARG	NE-CZ-NH2	6.62	123.61	120.30
2	P	664	ARG	NE-CZ-NH2	6.54	123.57	120.30
2	P	533	ARG	NE-CZ-NH2	6.49	123.54	120.30
2	P	716	ARG	NE-CZ-NH2	6.48	123.54	120.30
2	P	624	ARG	NE-CZ-NH2	6.47	123.53	120.30
2	P	231	TYR	CB-CG-CD2	-6.42	117.15	121.00
1	B	335	ARG	NE-CZ-NH2	6.38	123.49	120.30
1	D	147	ARG	NE-CZ-NH2	6.35	123.48	120.30
2	P	631	ARG	NE-CZ-NH2	6.32	123.46	120.30
1	D	39	ARG	NE-CZ-NH2	6.20	123.40	120.30
2	P	613	TYR	CB-CG-CD2	-6.10	117.34	121.00
2	P	34	ARG	NE-CZ-NH2	6.09	123.34	120.30
2	P	156	ARG	NE-CZ-NH2	6.09	123.34	120.30
1	B	177	ARG	NE-CZ-NH2	6.03	123.31	120.30
1	C	177	ARG	NE-CZ-NH1	-5.99	117.31	120.30
2	P	668	TYR	CB-CG-CD2	-5.97	117.42	121.00
2	P	321	ARG	NE-CZ-NH2	5.93	123.27	120.30
2	P	683	ARG	NE-CZ-NH2	5.93	123.27	120.30

Continued on next page...

Continued from previous page...

Mol	Chain	Res	Type	Atoms	Z	Observed(°)	Ideal(°)
2	P	253	ARG	NE-CZ-NH2	5.86	123.23	120.30
2	P	353	ARG	NE-CZ-NH2	5.83	123.22	120.30
1	D	177	ARG	NE-CZ-NH2	5.77	123.19	120.30
2	P	608	ARG	NE-CZ-NH2	5.70	123.15	120.30
1	D	312	ARG	NE-CZ-NH2	5.67	123.14	120.30
1	D	95	ARG	NE-CZ-NH2	5.61	123.11	120.30
1	D	183	ARG	NE-CZ-NH1	-5.60	117.50	120.30
2	P	315	ARG	NE-CZ-NH2	5.55	123.08	120.30
2	P	621	ARG	NE-CZ-NH2	5.51	123.06	120.30
1	C	183	ARG	NE-CZ-NH1	-5.51	117.55	120.30
2	P	90	ARG	NE-CZ-NH2	5.49	123.04	120.30
2	P	136	ARG	NE-CZ-NH2	5.48	123.04	120.30
1	D	312	ARG	CD-NE-CZ	5.48	131.27	123.60
2	P	117	ARG	NE-CZ-NH2	5.44	123.02	120.30
1	C	254	ARG	NE-CZ-NH2	5.39	123.00	120.30
3	R	75	ARG	NE-CZ-NH2	5.38	122.99	120.30
3	R	91	ARG	NE-CZ-NH2	5.33	122.96	120.30
2	P	131	ARG	NE-CZ-NH2	5.29	122.94	120.30
1	B	39	ARG	NE-CZ-NH2	5.29	122.94	120.30
1	D	166	TYR	CB-CG-CD1	-5.26	117.85	121.00
2	P	97	ARG	NE-CZ-NH2	5.25	122.92	120.30
1	C	206	ARG	NE-CZ-NH2	5.24	122.92	120.30
2	P	677	ARG	NE-CZ-NH2	5.18	122.89	120.30
1	D	210	ARG	NE-CZ-NH1	-5.15	117.72	120.30
2	P	630	ARG	NE-CZ-NH2	5.12	122.86	120.30
2	P	219	ARG	NE-CZ-NH2	5.07	122.84	120.30
2	P	711	ARG	NE-CZ-NH2	5.07	122.83	120.30
1	D	256	ARG	NE-CZ-NH2	5.03	122.81	120.30
2	P	93	ARG	NE-CZ-NH2	5.02	122.81	120.30

There are no chirality outliers.

All (9) planarity outliers are listed below:

Mol	Chain	Res	Type	Group
1	B	210	ARG	Sidechain
1	B	312	ARG	Sidechain
1	C	210	ARG	Sidechain
1	C	254	ARG	Sidechain
1	C	28	ARG	Sidechain
1	C	312	ARG	Sidechain
2	P	229	TYR	Sidechain
2	P	426	TYR	Sidechain

Continued on next page...

Continued from previous page...

Mol	Chain	Res	Type	Group
2	P	438	TYR	Sidechain

5.2 Too-close contacts [i](#)

In the following table, the Non-H and H(model) columns list the number of non-hydrogen atoms and hydrogen atoms in the chain respectively. The H(added) column lists the number of hydrogen atoms added and optimized by MolProbity. The Clashes column lists the number of clashes within the asymmetric unit, whereas Symm-Clashes lists symmetry-related clashes.

Mol	Chain	Non-H	H(model)	H(added)	Clashes	Symm-Clashes
1	B	2826	0	2799	0	0
1	C	2904	0	2872	2	0
1	D	2896	0	2868	3	0
2	P	5789	0	5777	3	0
3	R	1165	0	1092	1	0
4	B	27	0	12	0	0
4	C	27	0	12	0	0
4	D	27	0	12	0	0
5	B	1	0	0	0	0
5	C	1	0	0	0	0
5	D	1	0	0	0	0
All	All	15664	0	15444	9	0

The all-atom clashscore is defined as the number of clashes found per 1000 atoms (including hydrogen atoms). The all-atom clashscore for this structure is 0.

All (9) close contacts within the same asymmetric unit are listed below, sorted by their clash magnitude.

Atom-1	Atom-2	Interatomic distance (Å)	Clash overlap (Å)
1:C:193:LEU:HD23	1:C:250:ILE:HD11	1.85	0.59
1:D:312:ARG:CG	1:D:312:ARG:HH21	2.25	0.49
3:R:17:PHE:CZ	3:R:28:ILE:HD13	2.50	0.47
1:D:312:ARG:HH21	1:D:312:ARG:HG3	1.82	0.43
1:C:287:ILE:HG23	1:C:288:ASP:H	1.84	0.42
2:P:82:PHE:HA	2:P:85:ALA:HB3	2.01	0.42
2:P:409:LYS:HG3	2:P:577:VAL:HG21	2.03	0.41
2:P:231:TYR:CZ	2:P:280:GLY:HA2	2.55	0.41
1:D:258:PRO:HG3	1:D:306:TYR:CE1	2.56	0.41

There are no symmetry-related clashes.

5.3 Torsion angles [i](#)

5.3.1 Protein backbone [i](#)

In the following table, the Percentiles column shows the percent Ramachandran outliers of the chain as a percentile score with respect to all PDB entries followed by that with respect to all EM entries.

The Analysed column shows the number of residues for which the backbone conformation was analysed, and the total number of residues.

Mol	Chain	Analysed	Favoured	Allowed	Outliers	Percentiles	
1	B	357/375 (95%)	343 (96%)	13 (4%)	1 (0%)	37	61
1	C	370/375 (99%)	356 (96%)	13 (4%)	1 (0%)	37	61
1	D	369/375 (98%)	355 (96%)	14 (4%)	0	100	100
2	P	707/793 (89%)	687 (97%)	19 (3%)	1 (0%)	48	73
3	R	146/148 (99%)	138 (94%)	7 (5%)	1 (1%)	19	42
All	All	1949/2066 (94%)	1879 (96%)	66 (3%)	4 (0%)	45	68

All (4) Ramachandran outliers are listed below:

Mol	Chain	Res	Type
2	P	483	LYS
1	C	287	ILE
1	B	335	ARG
3	R	22	LYS

5.3.2 Protein sidechains [i](#)

In the following table, the Percentiles column shows the percent sidechain outliers of the chain as a percentile score with respect to all PDB entries followed by that with respect to all EM entries.

The Analysed column shows the number of residues for which the sidechain conformation was analysed, and the total number of residues.

Mol	Chain	Analysed	Rotameric	Outliers	Percentiles	
1	B	307/318 (96%)	303 (99%)	4 (1%)	65	85
1	C	315/318 (99%)	305 (97%)	10 (3%)	34	63
1	D	314/318 (99%)	305 (97%)	9 (3%)	37	67
2	P	623/692 (90%)	618 (99%)	5 (1%)	79	91

Continued on next page...

Continued from previous page...

Mol	Chain	Analysed	Rotameric	Outliers	Percentiles
3	R	126/126 (100%)	121 (96%)	5 (4%)	27 55
All	All	1685/1772 (95%)	1652 (98%)	33 (2%)	50 78

All (33) residues with a non-rotameric sidechain are listed below:

Mol	Chain	Res	Type
1	B	18	LYS
1	B	286	ASP
1	B	303	THR
1	B	370	VAL
1	C	3	ASP
1	C	111	ASN
1	C	162	ASN
1	C	248	ILE
1	C	289	ILE
1	C	290	ARG
1	C	297	ASN
1	C	303	THR
1	C	326	LYS
1	C	370	VAL
1	D	4	GLU
1	D	43	VAL
1	D	111	ASN
1	D	191	LYS
1	D	192	ILE
1	D	248	ILE
1	D	312	ARG
1	D	346	LEU
1	D	370	VAL
2	P	183	LEU
2	P	253	ARG
2	P	388	TYR
2	P	465	ARG
2	P	687	THR
3	R	35	THR
3	R	45	THR
3	R	64	ILE
3	R	81	ASP
3	R	91	ARG

Sometimes sidechains can be flipped to improve hydrogen bonding and reduce clashes. All (2) such sidechains are listed below:

Mol	Chain	Res	Type
2	P	194	HIS
2	P	511	HIS

5.3.3 RNA [i](#)

There are no RNA molecules in this entry.

5.4 Non-standard residues in protein, DNA, RNA chains [i](#)

There are no non-standard protein/DNA/RNA residues in this entry.

5.5 Carbohydrates [i](#)

There are no oligosaccharides in this entry.

5.6 Ligand geometry [i](#)

Of 6 ligands modelled in this entry, 3 are monoatomic - leaving 3 for Mogul analysis.

In the following table, the Counts columns list the number of bonds (or angles) for which Mogul statistics could be retrieved, the number of bonds (or angles) that are observed in the model and the number of bonds (or angles) that are defined in the Chemical Component Dictionary. The Link column lists molecule types, if any, to which the group is linked. The Z score for a bond length (or angle) is the number of standard deviations the observed value is removed from the expected value. A bond length (or angle) with $|Z| > 2$ is considered an outlier worth inspection. RMSZ is the root-mean-square of all Z scores of the bond lengths (or angles).

Mol	Type	Chain	Res	Link	Bond lengths			Bond angles		
					Counts	RMSZ	# Z > 2	Counts	RMSZ	# Z > 2
4	ADP	C	401	5	24,29,29	1.29	3 (12%)	29,45,45	1.42	4 (13%)
4	ADP	B	401	5	24,29,29	1.11	1 (4%)	29,45,45	1.52	6 (20%)
4	ADP	D	401	5	24,29,29	1.20	2 (8%)	29,45,45	1.42	3 (10%)

In the following table, the Chirals column lists the number of chiral outliers, the number of chiral centers analysed, the number of these observed in the model and the number defined in the Chemical Component Dictionary. Similar counts are reported in the Torsion and Rings columns. '-' means no outliers of that kind were identified.

Mol	Type	Chain	Res	Link	Chirals	Torsions	Rings
4	ADP	C	401	5	-	0/12/32/32	0/3/3/3
4	ADP	B	401	5	-	0/12/32/32	0/3/3/3

Continued on next page...

Continued from previous page...

Mol	Type	Chain	Res	Link	Chirals	Torsions	Rings
4	ADP	D	401	5	-	0/12/32/32	0/3/3/3

All (6) bond length outliers are listed below:

Mol	Chain	Res	Type	Atoms	Z	Observed(Å)	Ideal(Å)
4	C	401	ADP	PA-O3A	-3.09	1.56	1.59
4	D	401	ADP	PA-O3A	-2.91	1.56	1.59
4	C	401	ADP	O4'-C1'	2.71	1.44	1.40
4	B	401	ADP	PA-O3A	-2.61	1.56	1.59
4	C	401	ADP	PB-O2B	-2.16	1.46	1.54
4	D	401	ADP	PB-O2B	-2.03	1.47	1.54

All (13) bond angle outliers are listed below:

Mol	Chain	Res	Type	Atoms	Z	Observed(°)	Ideal(°)
4	D	401	ADP	C4-C5-N7	4.44	114.03	109.34
4	B	401	ADP	C4-C5-N7	4.38	113.97	109.34
4	C	401	ADP	C4-C5-N7	4.34	113.92	109.34
4	B	401	ADP	O2A-PA-O3A	4.12	118.41	107.27
4	C	401	ADP	O2A-PA-O3A	3.21	115.96	107.27
4	D	401	ADP	O2A-PA-O3A	3.06	115.55	107.27
4	C	401	ADP	C5-C6-N6	2.28	123.78	120.31
4	C	401	ADP	N6-C6-N1	-2.23	113.56	118.33
4	D	401	ADP	O2B-PB-O3A	2.21	112.04	104.64
4	B	401	ADP	O2B-PB-O3A	2.11	111.70	104.64
4	B	401	ADP	N6-C6-N1	-2.08	113.88	118.33
4	B	401	ADP	O3B-PB-O3A	2.07	111.57	104.64
4	B	401	ADP	C5-C6-N6	2.02	123.39	120.31

There are no chirality outliers.

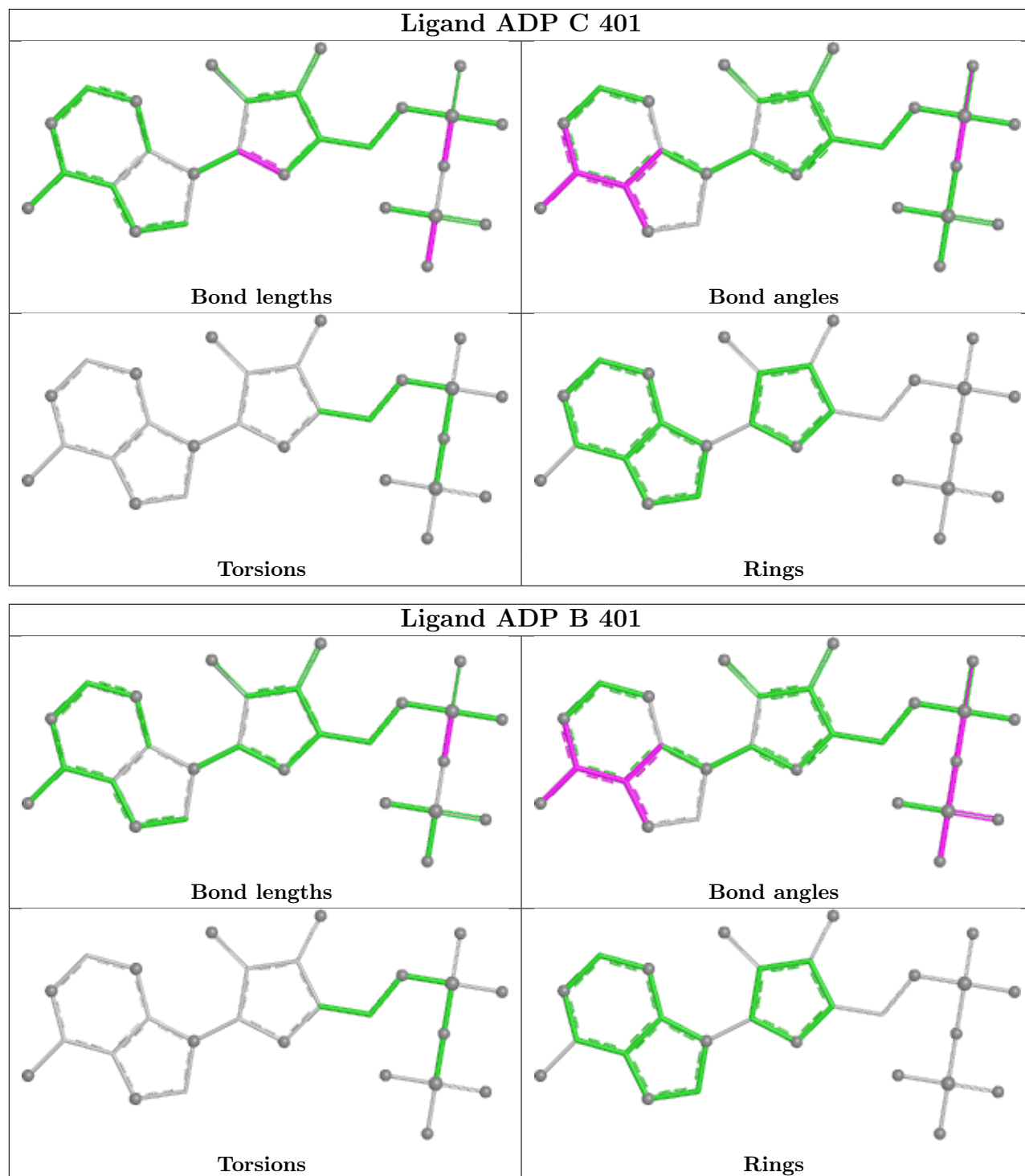
There are no torsion outliers.

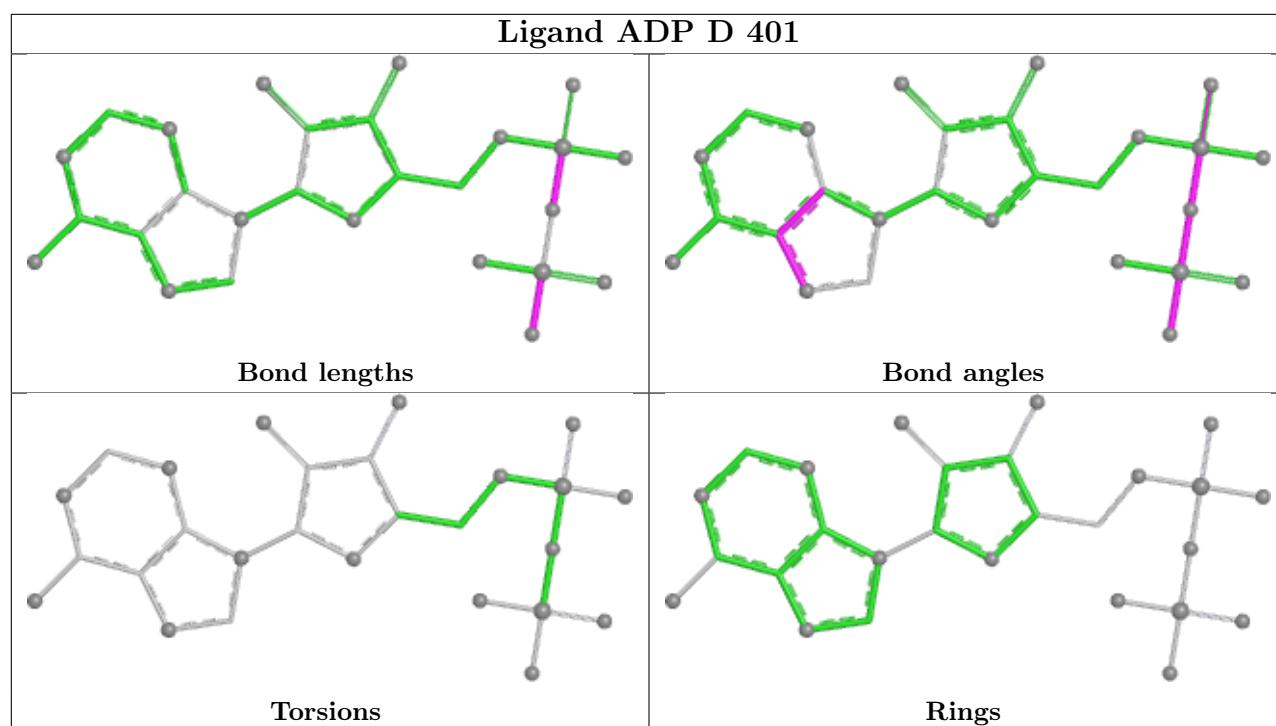
There are no ring outliers.

No monomer is involved in short contacts.

The following is a two-dimensional graphical depiction of Mogul quality analysis of bond lengths, bond angles, torsion angles, and ring geometry for all instances of the Ligand of Interest. In addition, ligands with molecular weight > 250 and outliers as shown on the validation Tables will also be included. For torsion angles, if less than 5% of the Mogul distribution of torsion angles is within 10 degrees of the torsion angle in question, then that torsion angle is considered an outlier. Any bond that is central to one or more torsion angles identified as an outlier by Mogul will be highlighted in the graph. For rings, the root-mean-square deviation (RMSD) between the ring

in question and similar rings identified by Mogul is calculated over all ring torsion angles. If the average RMSD is greater than 60 degrees and the minimal RMSD between the ring in question and any Mogul-identified rings is also greater than 60 degrees, then that ring is considered an outlier. The outliers are highlighted in purple. The color gray indicates Mogul did not find sufficient equivalents in the CSD to analyse the geometry.





5.7 Other polymers [i](#)

There are no such residues in this entry.

5.8 Polymer linkage issues [i](#)

There are no chain breaks in this entry.

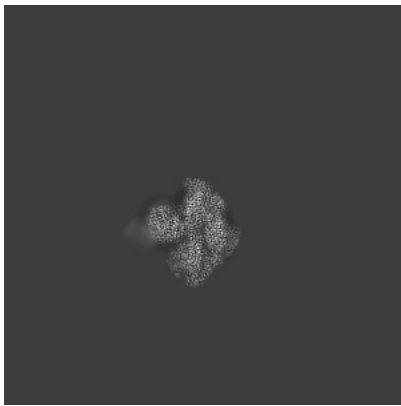
6 Map visualisation [i](#)

This section contains visualisations of the EMDB entry EMD-45564. These allow visual inspection of the internal detail of the map and identification of artifacts.

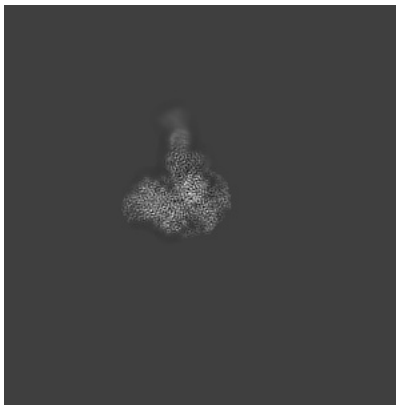
Images derived from a raw map, generated by summing the deposited half-maps, are presented below the corresponding image components of the primary map to allow further visual inspection and comparison with those of the primary map.

6.1 Orthogonal projections [i](#)

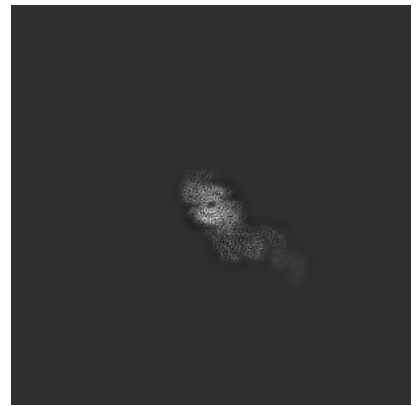
6.1.1 Primary map



X

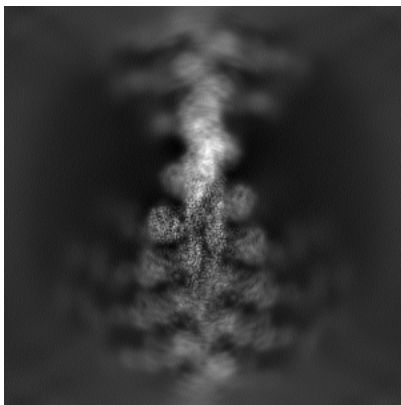


Y

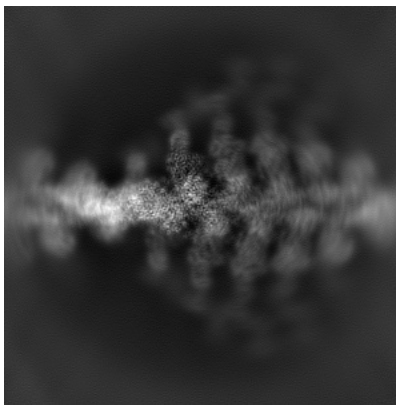


Z

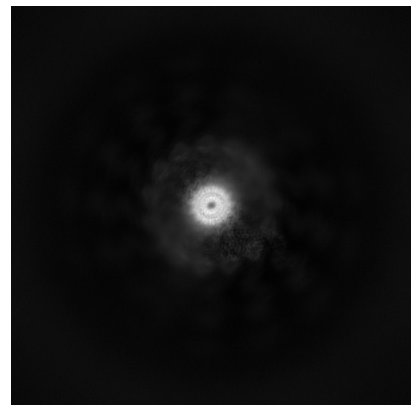
6.1.2 Raw map



X



Y



Z

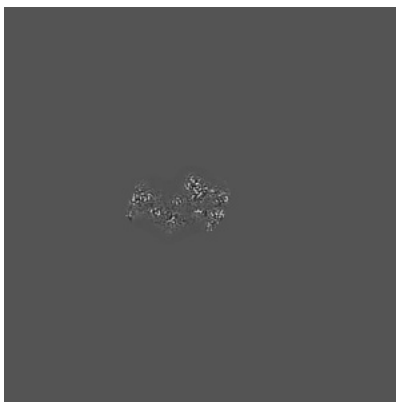
The images above show the map projected in three orthogonal directions.

6.2 Central slices [i](#)

6.2.1 Primary map



X Index: 192

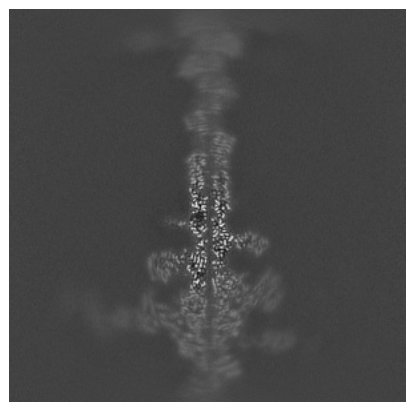


Y Index: 192

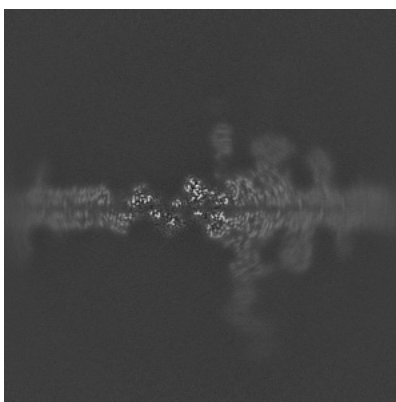


Z Index: 192

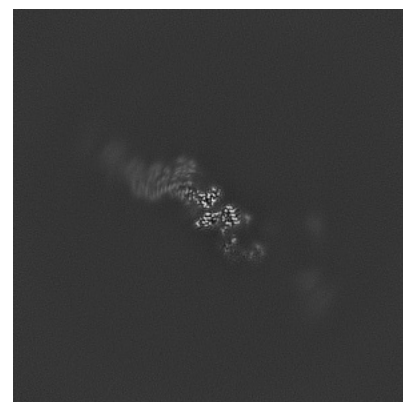
6.2.2 Raw map



X Index: 192



Y Index: 192



Z Index: 192

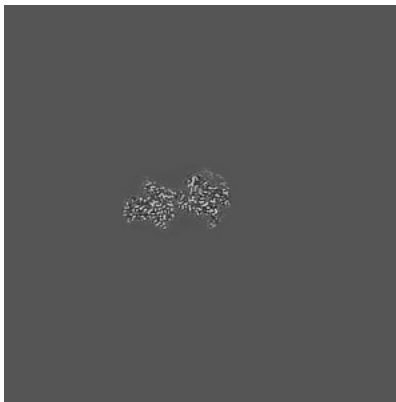
The images above show central slices of the map in three orthogonal directions.

6.3 Largest variance slices [i](#)

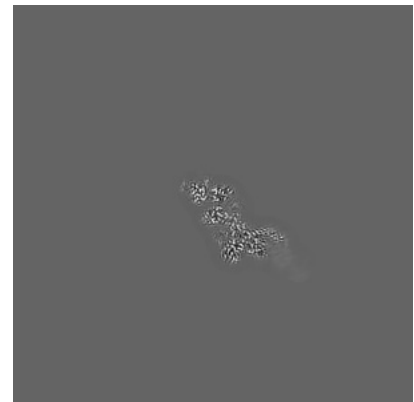
6.3.1 Primary map



X Index: 197

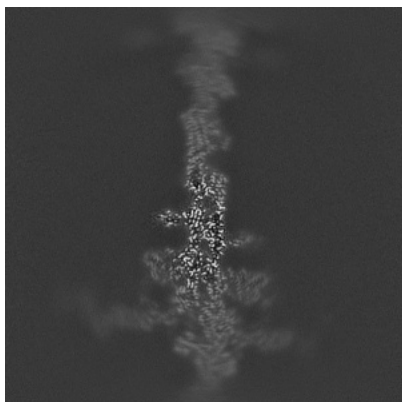


Y Index: 185

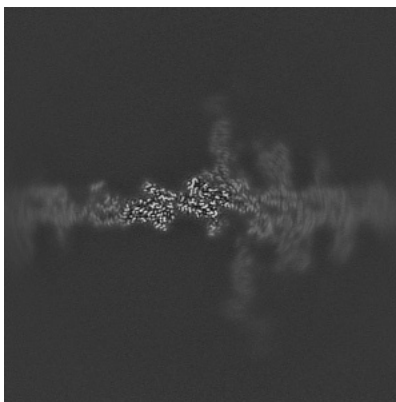


Z Index: 173

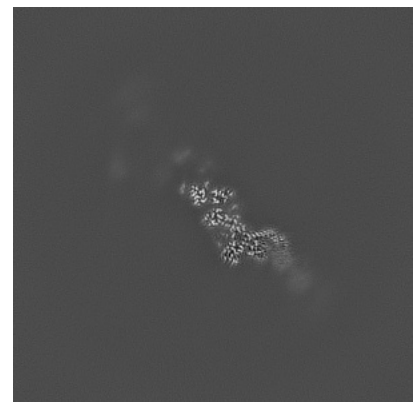
6.3.2 Raw map



X Index: 197



Y Index: 185

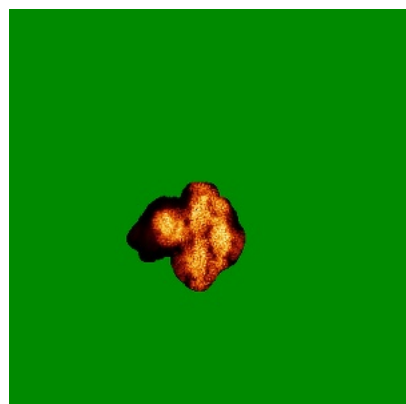


Z Index: 173

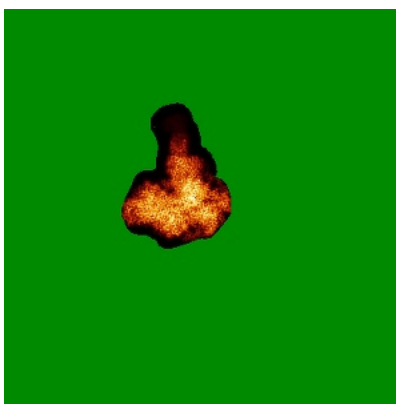
The images above show the largest variance slices of the map in three orthogonal directions.

6.4 Orthogonal standard-deviation projections (False-color) [i](#)

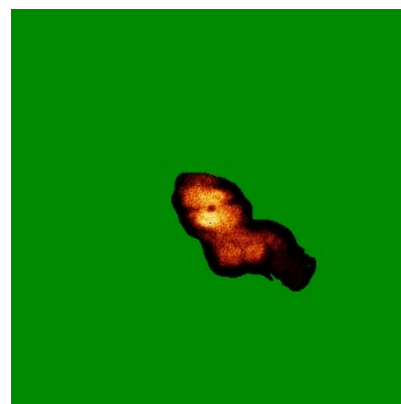
6.4.1 Primary map



X

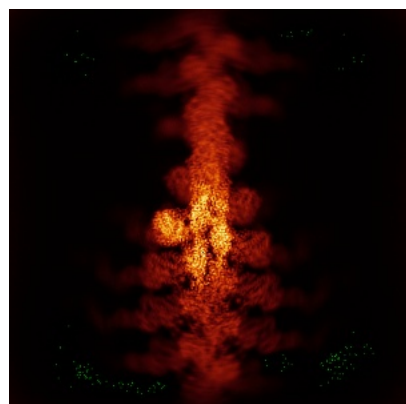


Y

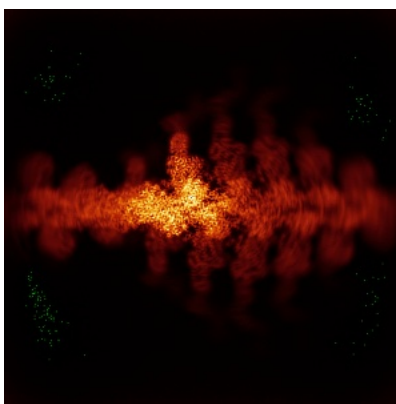


Z

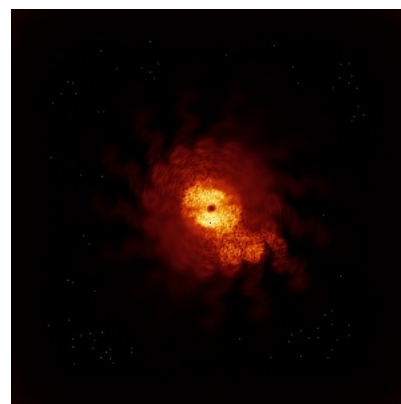
6.4.2 Raw map



X



Y

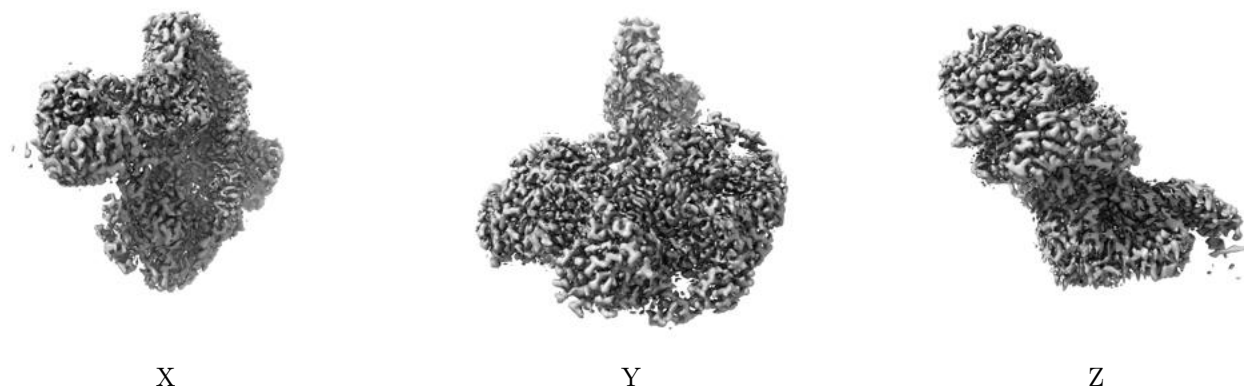


Z

The images above show the map standard deviation projections with false color in three orthogonal directions. Minimum values are shown in green, max in blue, and dark to light orange shades represent small to large values respectively.

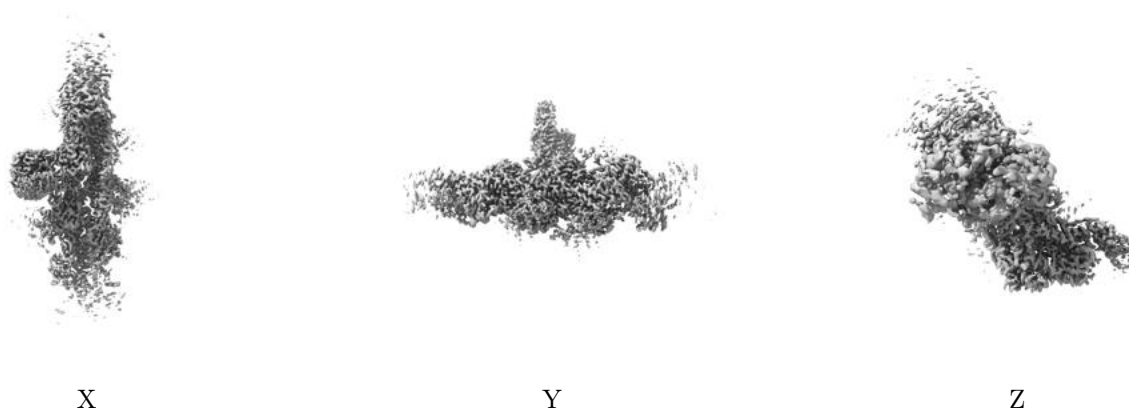
6.5 Orthogonal surface views [i](#)

6.5.1 Primary map



The images above show the 3D surface view of the map at the recommended contour level 0.3. These images, in conjunction with the slice images, may facilitate assessment of whether an appropriate contour level has been provided.

6.5.2 Raw map



These images show the 3D surface of the raw map. The raw map's contour level was selected so that its surface encloses the same volume as the primary map does at its recommended contour level.

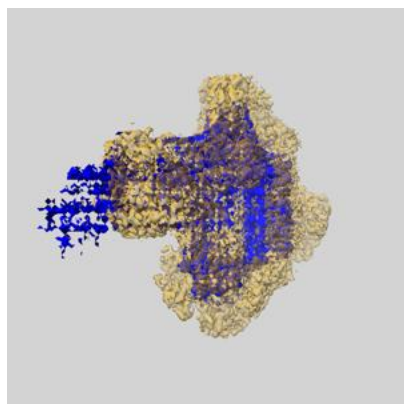
6.6 Mask visualisation [i](#)

This section shows the 3D surface view of the primary map at 50% transparency overlaid with the specified mask at 0% transparency

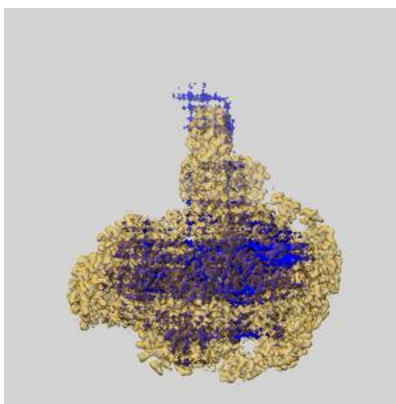
A mask typically either:

- Encompasses the whole structure
- Separates out a domain, a functional unit, a monomer or an area of interest from a larger structure

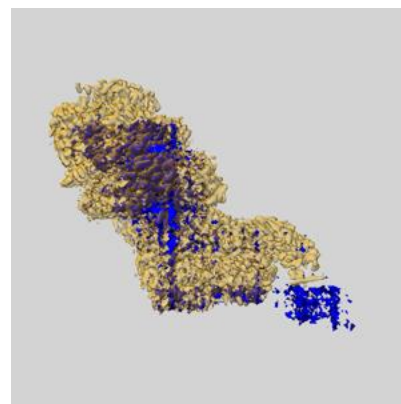
6.6.1 emd_45564_msk_1.map [i](#)



X



Y

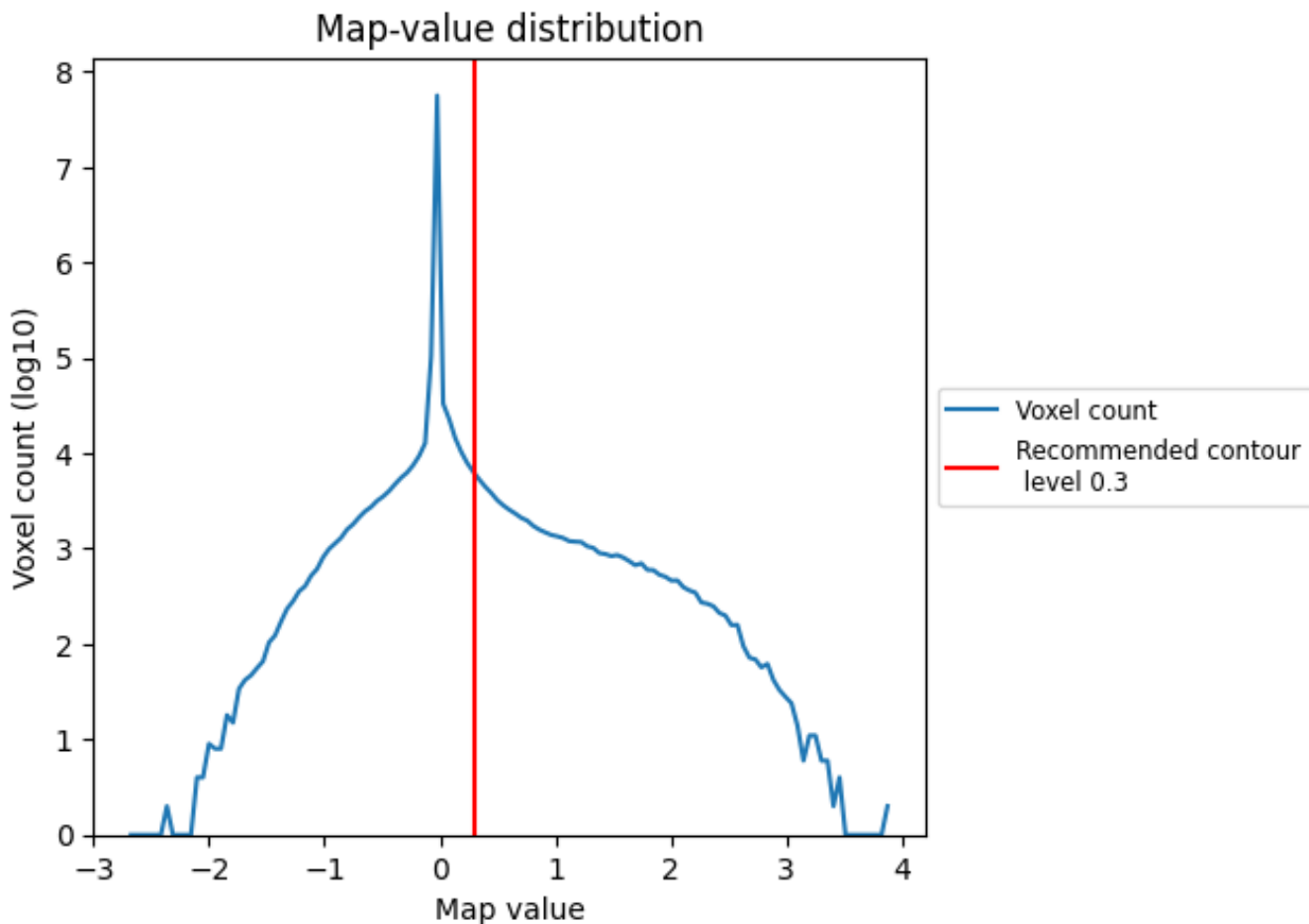


Z

7 Map analysis [i](#)

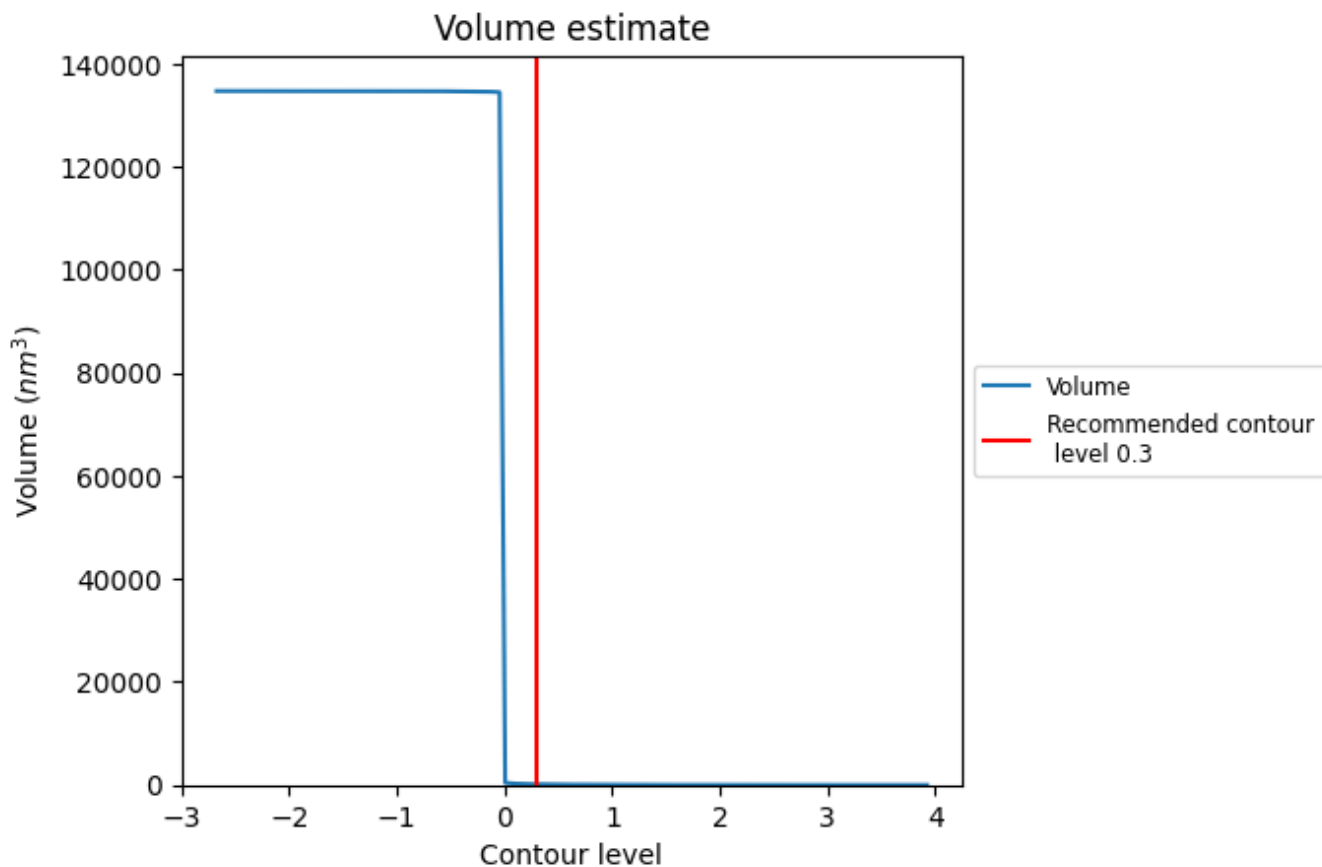
This section contains the results of statistical analysis of the map.

7.1 Map-value distribution [i](#)



The map-value distribution is plotted in 128 intervals along the x-axis. The y-axis is logarithmic. A spike in this graph at zero usually indicates that the volume has been masked.

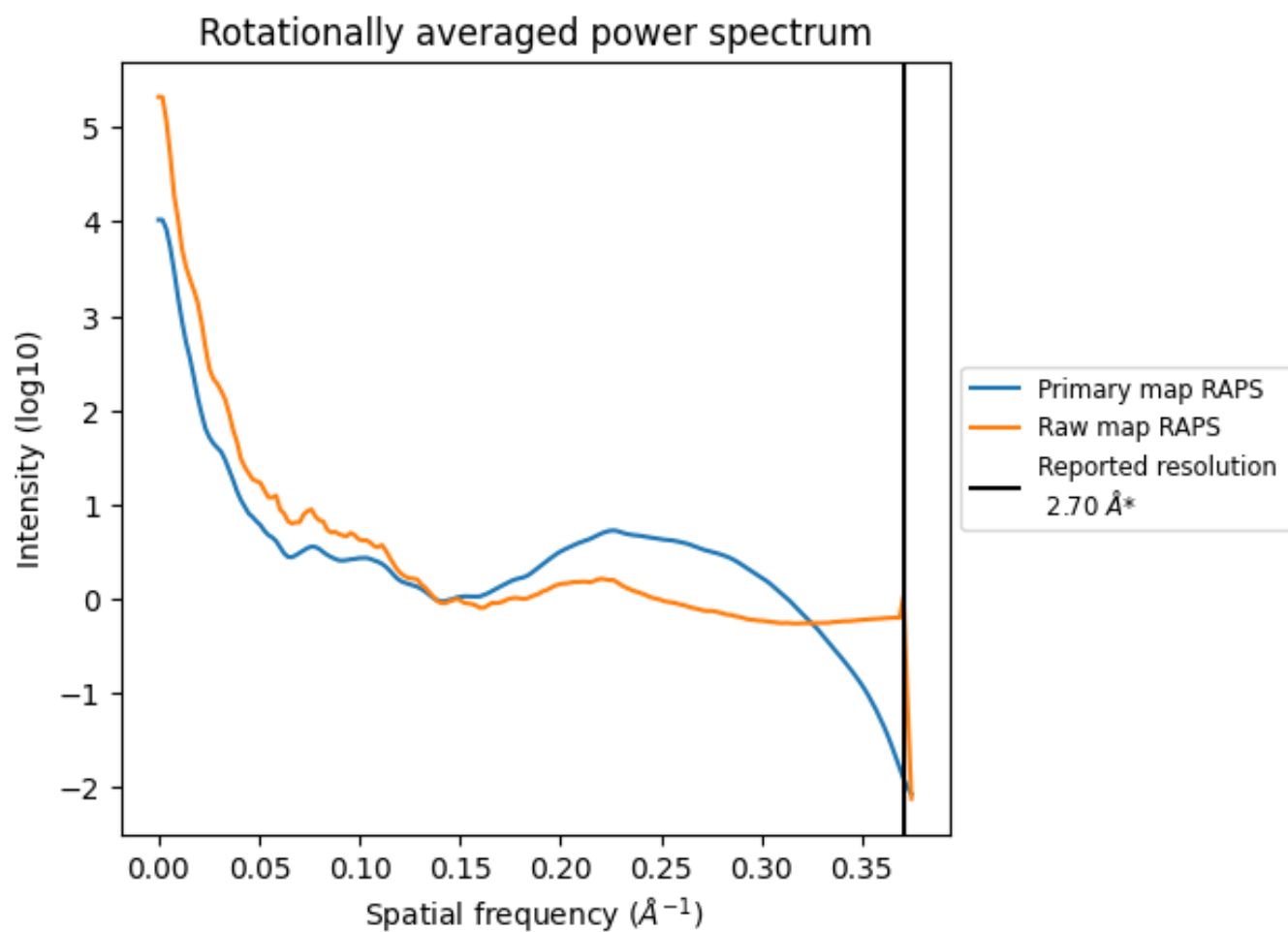
7.2 Volume estimate [i](#)



The volume at the recommended contour level is 145 nm³; this corresponds to an approximate mass of 131 kDa.

The volume estimate graph shows how the enclosed volume varies with the contour level. The recommended contour level is shown as a vertical line and the intersection between the line and the curve gives the volume of the enclosed surface at the given level.

7.3 Rotationally averaged power spectrum i

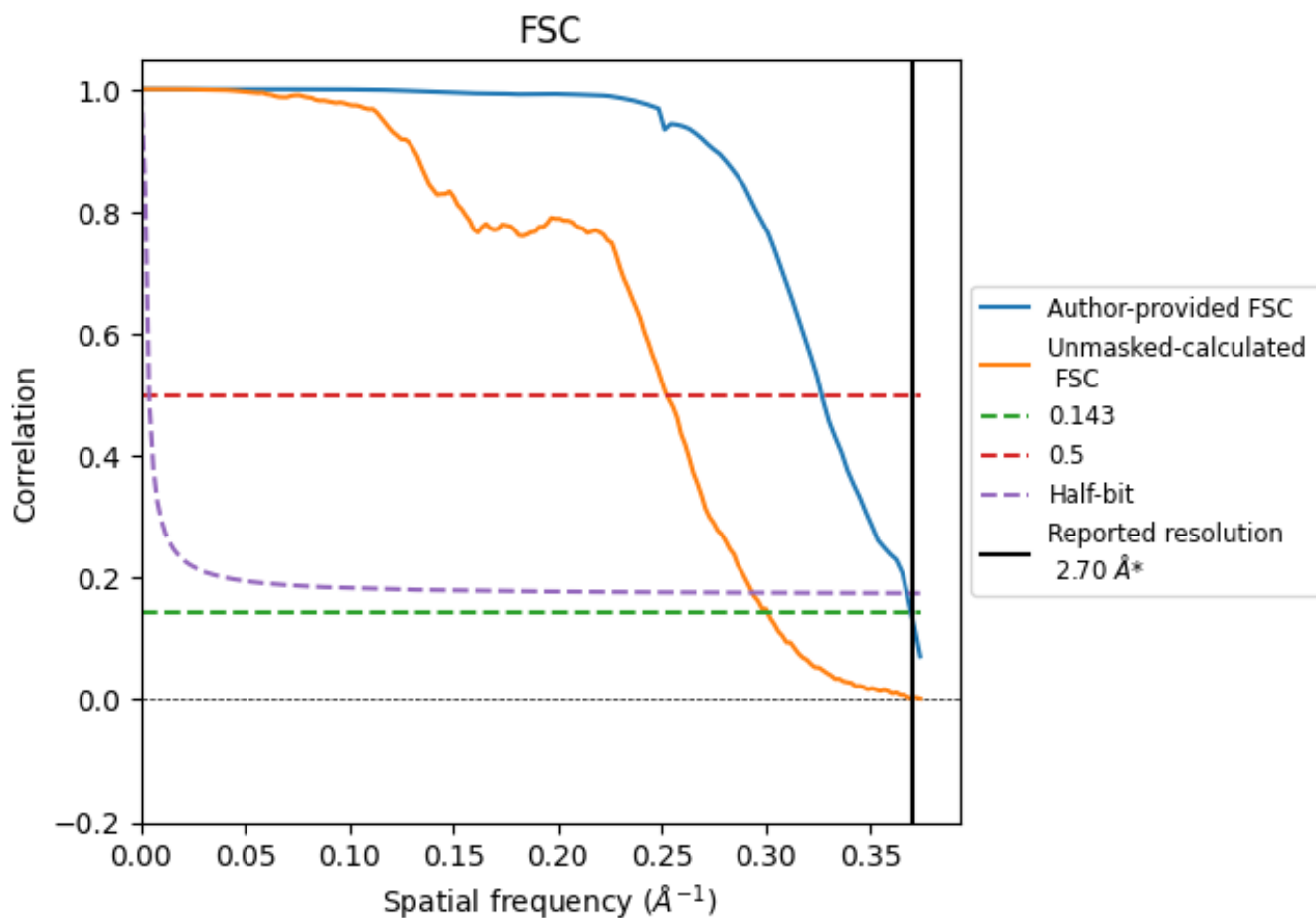


*Reported resolution corresponds to spatial frequency of 0.370 \AA^{-1}

8 Fourier-Shell correlation [i](#)

Fourier-Shell Correlation (FSC) is the most commonly used method to estimate the resolution of single-particle and subtomogram-averaged maps. The shape of the curve depends on the imposed symmetry, mask and whether or not the two 3D reconstructions used were processed from a common reference. The reported resolution is shown as a black line. A curve is displayed for the half-bit criterion in addition to lines showing the 0.143 gold standard cut-off and 0.5 cut-off.

8.1 FSC [i](#)



*Reported resolution corresponds to spatial frequency of 0.370 Å⁻¹

8.2 Resolution estimates [i](#)

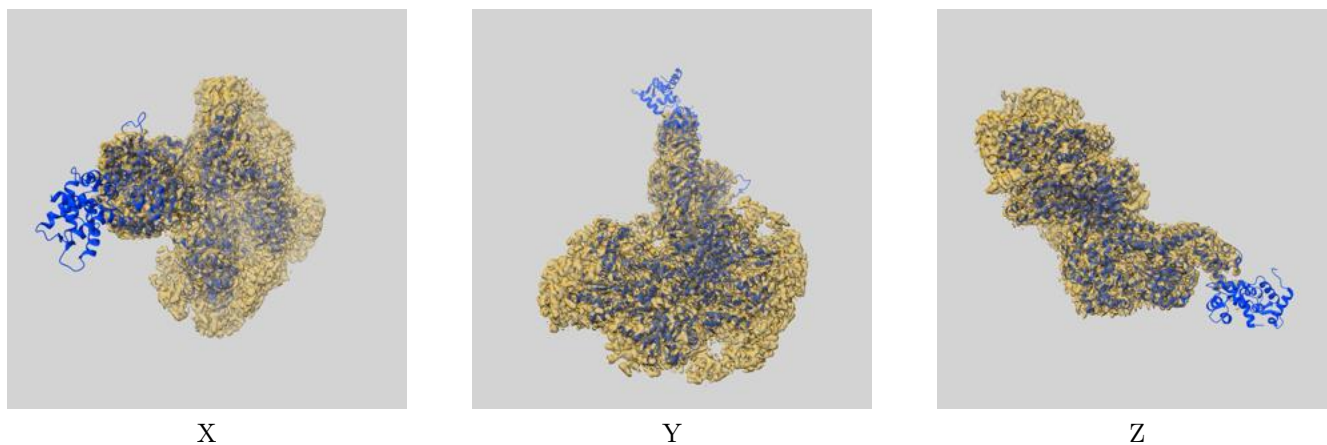
Resolution estimate (Å)	Estimation criterion (FSC cut-off)		
	0.143	0.5	Half-bit
Reported by author	2.70	-	-
Author-provided FSC curve	2.70	3.06	2.72
Unmasked-calculated*	3.32	3.96	3.40

*Resolution estimate based on FSC curve calculated by comparison of deposited half-maps. The value from deposited half-maps intersecting FSC 0.143 CUT-OFF 3.32 differs from the reported value 2.7 by more than 10 %

9 Map-model fit [i](#)

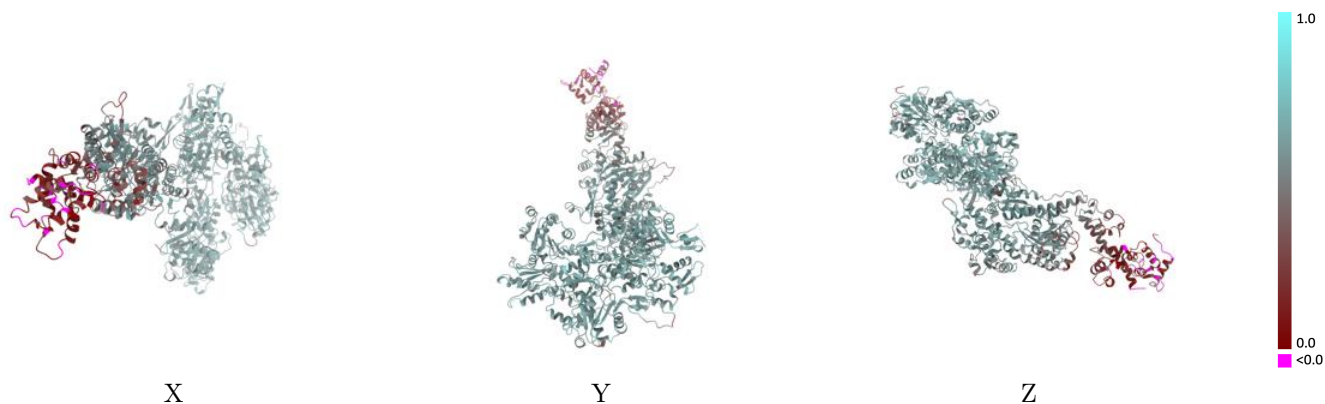
This section contains information regarding the fit between EMDB map EMD-45564 and PDB model 9CFV. Per-residue inclusion information can be found in section 3 on page 7.

9.1 Map-model overlay [i](#)



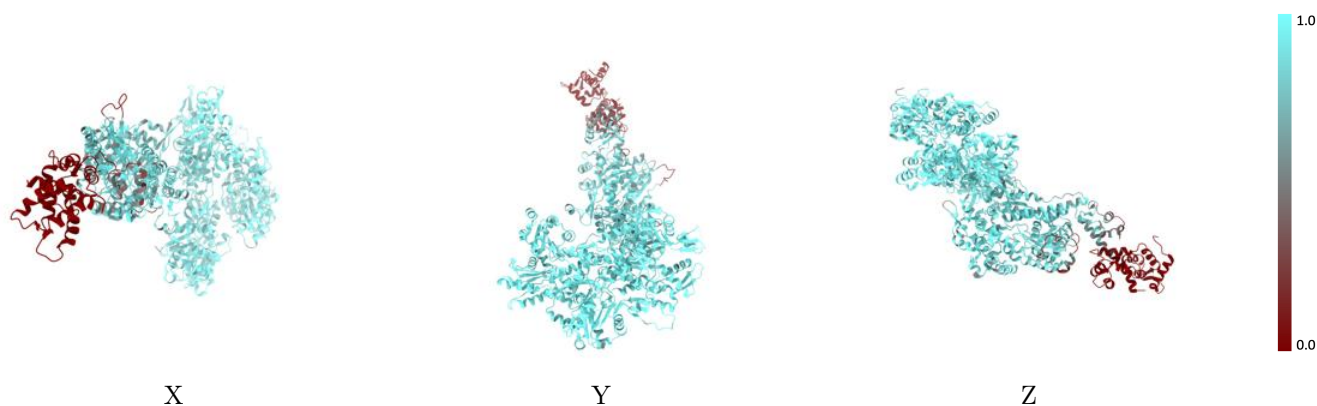
The images above show the 3D surface view of the map at the recommended contour level 0.3 at 50% transparency in yellow overlaid with a ribbon representation of the model coloured in blue. These images allow for the visual assessment of the quality of fit between the atomic model and the map.

9.2 Q-score mapped to coordinate model [i](#)



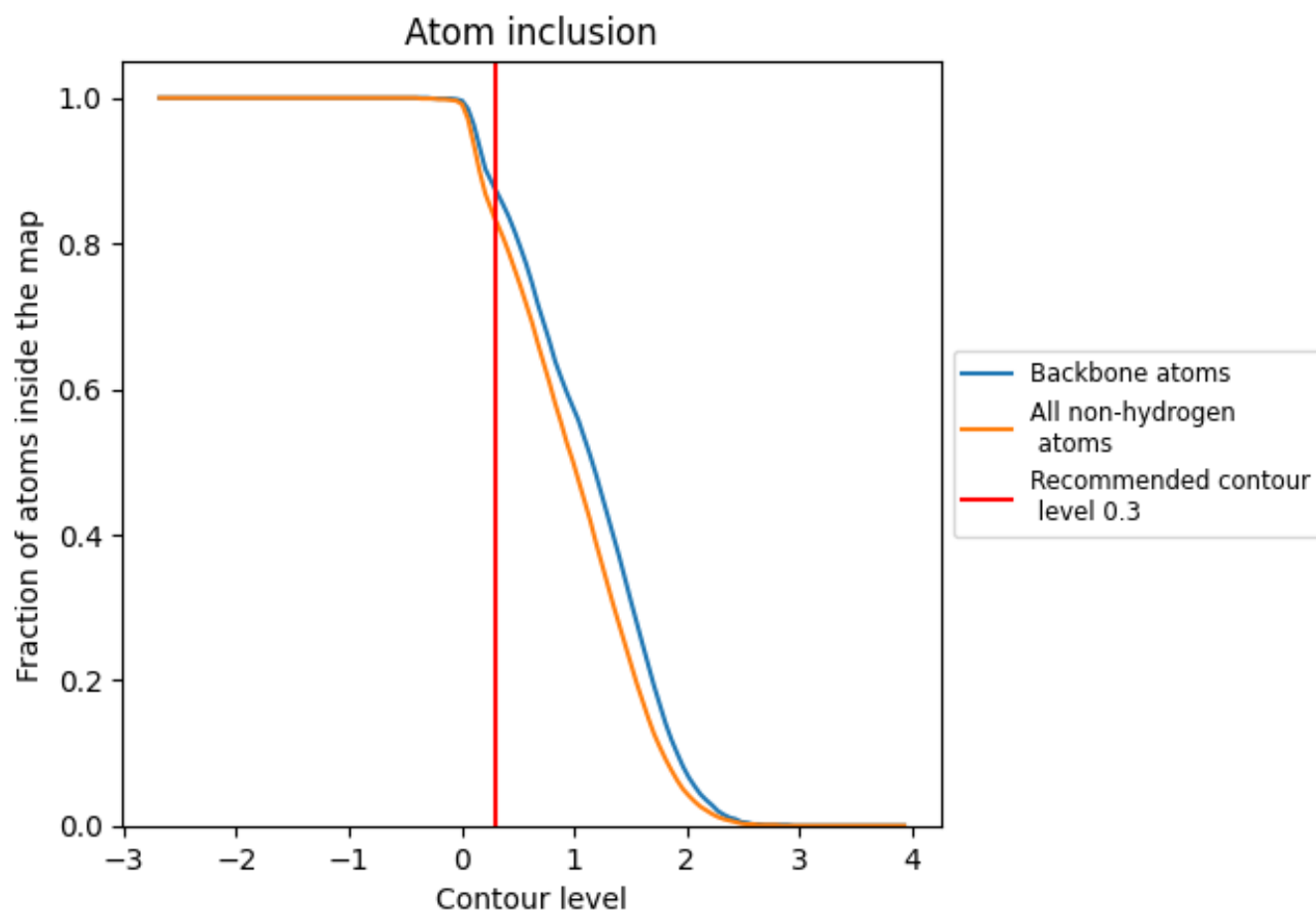
The images above show the model with each residue coloured according to its Q-score. This shows their resolvability in the map with higher Q-score values reflecting better resolvability. Please note: Q-score is calculating the resolvability of atoms, and thus high values are only expected at resolutions at which atoms can be resolved. Low Q-score values may therefore be expected for many entries.

9.3 Atom inclusion mapped to coordinate model [i](#)



The images above show the model with each residue coloured according to its atom inclusion. This shows to what extent they are inside the map at the recommended contour level (0.3).













9.4 Atom inclusion [i](#)



At the recommended contour level, 87% of all backbone atoms, 83% of all non-hydrogen atoms, are inside the map.

9.5 Map-model fit summary

The table lists the average atom inclusion at the recommended contour level (0.3) and Q-score for the entire model and for each chain.

Chain	Atom inclusion	Q-score
All	 0.8320	 0.5350
B	 0.9610	 0.6070
C	 0.9560	 0.5960
D	 0.9560	 0.6010
P	 0.8110	 0.5160
R	 0.0100	 0.1330

