



Full wwPDB X-ray Structure Validation Report ⓘ

Jun 11, 2024 – 10:10 PM EDT

PDB ID : 1CGP
Title : CATABOLITE GENE ACTIVATOR PROTEIN (CAP)/DNA COMPLEX +
ADENOSINE-3',5'-CYCLIC-MONOPHOSPHATE
Authors : Schultz, S.C.; Shields, G.C.; Steitz, T.A.
Deposited on : 1991-08-12
Resolution : 3.00 Å(reported)

This is a Full wwPDB X-ray Structure Validation Report for a publicly released PDB entry.

We welcome your comments at validation@mail.wwpdb.org

A user guide is available at

<https://www.wwpdb.org/validation/2017/XrayValidationReportHelp>

with specific help available everywhere you see the ⓘ symbol.

The types of validation reports are described at

<http://www.wwpdb.org/validation/2017/FAQs#types>.

The following versions of software and data (see [references ⓘ](#)) were used in the production of this report:

MolProbity : 4.02b-467
Mogul : 2022.3.0, CSD as543be (2022)
Xtrriage (Phenix) : **NOT EXECUTED**
EDS : **NOT EXECUTED**
buster-report : 1.1.7 (2018)
Percentile statistics : 20191225.v01 (using entries in the PDB archive December 25th 2019)
Ideal geometry (proteins) : Engh & Huber (2001)
Ideal geometry (DNA, RNA) : Parkinson et al. (1996)
Validation Pipeline (wwPDB-VP) : 2.36.2

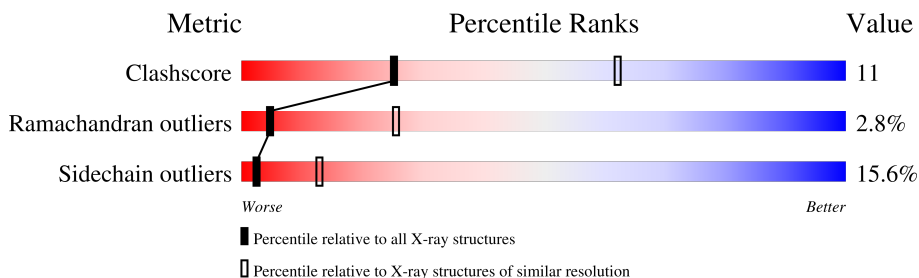
1 Overall quality at a glance

The following experimental techniques were used to determine the structure:

X-RAY DIFFRACTION

The reported resolution of this entry is 3.00 Å.

Percentile scores (ranging between 0-100) for global validation metrics of the entry are shown in the following graphic. The table shows the number of entries on which the scores are based.



Metric	Whole archive (#Entries)	Similar resolution (#Entries, resolution range(Å))
Clashscore	141614	2416 (3.00-3.00)
Ramachandran outliers	138981	2333 (3.00-3.00)
Sidechain outliers	138945	2336 (3.00-3.00)

The table below summarises the geometric issues observed across the polymeric chains and their fit to the electron density. The red, orange, yellow and green segments of the lower bar indicate the fraction of residues that contain outliers for ≥ 3 , 2, 1 and 0 types of geometric quality criteria respectively. A grey segment represents the fraction of residues that are not modelled. The numeric value for each fraction is indicated below the corresponding segment, with a dot representing fractions $\leq 5\%$

Note EDS was not executed.

Mol	Chain	Length	Quality of chain
1	C	18	
1	E	18	
2	D	13	
2	F	13	
3	A	205	
3	B	205	

2 Entry composition i

There are 4 unique types of molecules in this entry. The entry contains 5274 atoms, of which 856 are hydrogens and 0 are deuteriums.

In the tables below, the ZeroOcc column contains the number of atoms modelled with zero occupancy, the AltConf column contains the number of residues with at least one atom in alternate conformation and the Trace column contains the number of residues modelled with at most 2 atoms.

- Molecule 1 is a DNA chain called DNA (5'-D(*GP*CP*GP*AP*AP*AP*AP*GP*TP*GP*TP*GP*AP*CP*AP*TP*AP*T)-3').

Mol	Chain	Residues	Atoms					ZeroOcc	AltConf	Trace	
			Total	C	H	N	O				P
1	C	18	Total 411	C 178	H 39	N 74	O 103	P 17	0	0	0
1	E	18	Total 411	C 178	H 39	N 74	O 103	P 17	0	0	0

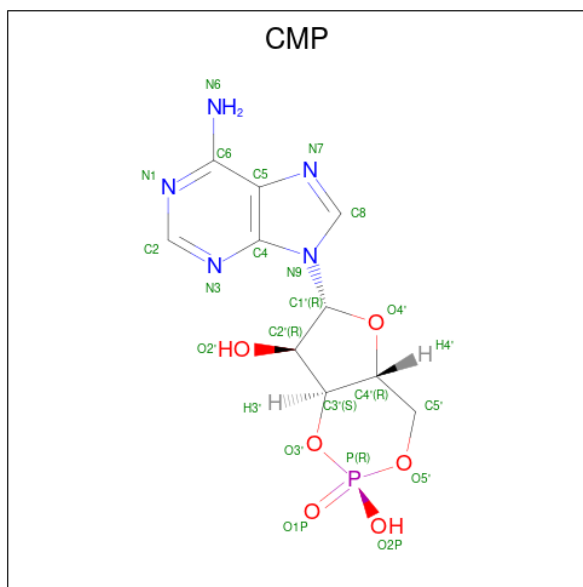
- Molecule 2 is a DNA chain called DNA (5'-D(*GP*TP*CP*AP*CP*AP*CP*TP*TP*TP*TP*CP*G)-3').

Mol	Chain	Residues	Atoms					ZeroOcc	AltConf	Trace	
			Total	C	H	N	O				P
2	D	13	Total 284	C 126	H 25	N 42	O 79	P 12	0	0	0
2	F	13	Total 284	C 126	H 25	N 42	O 79	P 12	0	0	0

- Molecule 3 is a protein called PROTEIN (CATABOLITE GENE ACTIVATOR PROTEIN (CAP)).

Mol	Chain	Residues	Atoms					ZeroOcc	AltConf	Trace	
			Total	C	H	N	O				S
3	A	197	Total 1917	C 986	H 361	N 273	O 288	S 9	0	0	0
3	B	197	Total 1917	C 986	H 361	N 273	O 288	S 9	0	0	0

- Molecule 4 is ADENOSINE-3',5'-CYCLIC-MONOPHOSPHATE (three-letter code: CMP) (formula: C₁₀H₁₂N₅O₆P).



Mol	Chain	Residues	Atoms					ZeroOcc	AltConf	
			Total	C	H	N	O			P
4	A	1	Total	C	H	N	O	P	0	0
			25	10	3	5	6	1		
4	B	1	Total	C	H	N	O	P	0	0
			25	10	3	5	6	1		

3 Residue-property plots [i](#)

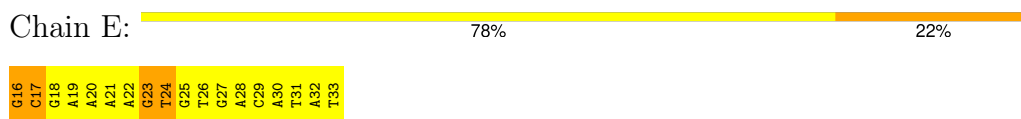
These plots are drawn for all protein, RNA, DNA and oligosaccharide chains in the entry. The first graphic for a chain summarises the proportions of the various outlier classes displayed in the second graphic. The second graphic shows the sequence view annotated by issues in geometry. Residues are color-coded according to the number of geometric quality criteria for which they contain at least one outlier: green = 0, yellow = 1, orange = 2 and red = 3 or more. Stretches of 2 or more consecutive residues without any outlier are shown as a green connector. Residues present in the sample, but not in the model, are shown in grey.

Note EDS was not executed.

- Molecule 1: DNA (5'-D(*GP*CP*GP*AP*AP*AP*AP*GP*TP*GP*TP*GP*AP*CP*AP*TP*AP*T)-3')



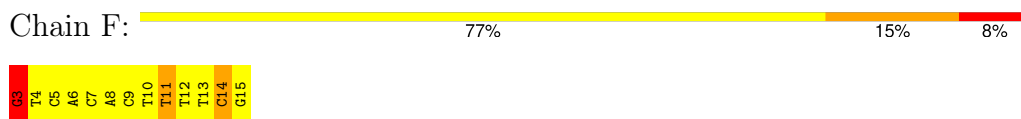
- Molecule 1: DNA (5'-D(*GP*CP*GP*AP*AP*AP*AP*GP*TP*GP*TP*GP*AP*CP*AP*TP*AP*T)-3')



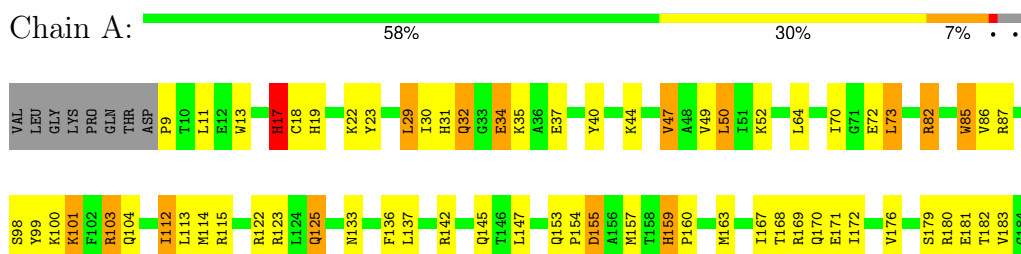
- Molecule 2: DNA (5'-D(*GP*TP*CP*AP*CP*AP*CP*TP*TP*TP*TP*CP*G)-3')



- Molecule 2: DNA (5'-D(*GP*TP*CP*AP*CP*AP*CP*TP*TP*TP*TP*CP*G)-3')



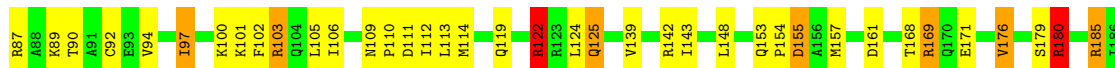
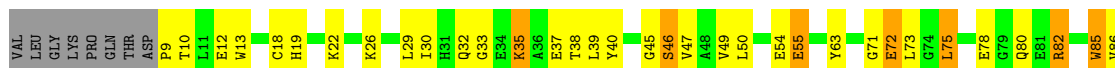
- Molecule 3: PROTEIN (CATALBOLITE GENE ACTIVATOR PROTEIN (CAP))





• Molecule 3: PROTEIN (CATALBOLITE GENE ACTIVATOR PROTEIN (CAP))

Chain B: 57% 31% 7%



4 Data and refinement statistics

Xtrriage (Phenix) and EDS were not executed - this section is therefore incomplete.

Property	Value	Source
Space group	C 2 2 21	Depositor
Cell constants a, b, c, α , β , γ	138.00Å 152.60Å 76.00Å 90.00° 90.00° 90.00°	Depositor
Resolution (Å)	8.00 – 3.00	Depositor
% Data completeness (in resolution range)	(Not available) (8.00-3.00)	Depositor
R_{merge}	(Not available)	Depositor
R_{sym}	(Not available)	Depositor
Refinement program	X-PLOR	Depositor
R, R_{free}	0.235 , (Not available)	Depositor
Estimated twinning fraction	No twinning to report.	Xtrriage
Total number of atoms	5274	wwPDB-VP
Average B, all atoms (Å ²)	55.0	wwPDB-VP

5 Model quality i

5.1 Standard geometry i

Bond lengths and bond angles in the following residue types are not validated in this section: CMP

The Z score for a bond length (or angle) is the number of standard deviations the observed value is removed from the expected value. A bond length (or angle) with $|Z| > 5$ is considered an outlier worth inspection. RMSZ is the root-mean-square of all Z scores of the bond lengths (or angles).

Mol	Chain	Bond lengths		Bond angles	
		RMSZ	# Z >5	RMSZ	# Z >5
1	C	1.70	5/419 (1.2%)	4.04	72/646 (11.1%)
1	E	1.53	3/419 (0.7%)	4.32	70/646 (10.8%)
2	D	1.39	1/288 (0.3%)	4.42	54/442 (12.2%)
2	F	1.61	2/288 (0.7%)	3.78	53/442 (12.0%)
3	A	0.81	1/1580 (0.1%)	1.57	21/2127 (1.0%)
3	B	0.82	0/1580	1.59	25/2127 (1.2%)
All	All	1.11	12/4574 (0.3%)	2.74	295/6430 (4.6%)

Chiral center outliers are detected by calculating the chiral volume of a chiral center and verifying if the center is modelled as a planar moiety or with the opposite hand. A planarity outlier is detected by checking planarity of atoms in a peptide group, atoms in a mainchain group or atoms of a sidechain that are expected to be planar.

Mol	Chain	#Chirality outliers	#Planarity outliers
1	C	0	1
2	D	0	1
2	F	0	2
3	A	0	1
All	All	0	5

All (12) bond length outliers are listed below:

Mol	Chain	Res	Type	Atoms	Z	Observed(Å)	Ideal(Å)
2	D	11	DT	C5-C7	7.91	1.54	1.50
1	C	23	DG	C4'-C3'	-5.93	1.46	1.52
2	F	11	DT	C4'-O4'	-5.80	1.39	1.45
1	E	20	DA	C5'-C4'	5.59	1.57	1.51
1	E	28	DA	P-O5'	5.29	1.65	1.59
1	C	24	DT	C4'-O4'	-5.26	1.39	1.45
1	C	31	DT	C5-C7	5.25	1.53	1.50
1	C	18	DG	C5'-C4'	5.19	1.57	1.51

Continued on next page...

Continued from previous page...

Mol	Chain	Res	Type	Atoms	Z	Observed(Å)	Ideal(Å)
2	F	12	DT	N1-C6	-5.17	1.34	1.38
1	E	24	DT	C5-C7	5.15	1.53	1.50
1	C	23	DG	C4'-O4'	-5.09	1.40	1.45
3	A	85	TRP	CG-CD2	-5.01	1.35	1.43

All (295) bond angle outliers are listed below:

Mol	Chain	Res	Type	Atoms	Z	Observed(°)	Ideal(°)
2	D	12	DT	O3'-P-O5'	30.54	162.02	104.00
1	E	24	DT	OP2-P-O3'	30.30	171.86	105.20
1	E	19	DA	O3'-P-O5'	28.85	158.82	104.00
2	D	9	DC	O3'-P-O5'	28.29	157.74	104.00
2	D	4	DT	OP2-P-O3'	27.14	164.91	105.20
1	E	18	DG	O3'-P-O5'	26.67	154.67	104.00
1	E	25	DG	OP2-P-O3'	-24.03	52.34	105.20
2	D	3	DG	OP1-P-O3'	-22.85	54.94	105.20
2	F	14	DC	O3'-P-O5'	22.83	147.37	104.00
1	E	18	DG	OP2-P-O3'	-22.62	55.45	105.20
1	C	31	DT	OP2-P-O3'	-21.92	56.98	105.20
2	D	5	DC	OP2-P-O3'	21.85	153.27	105.20
1	C	27	DG	OP2-P-O3'	21.68	152.90	105.20
1	C	26	DT	OP2-P-O3'	21.43	152.35	105.20
1	E	25	DG	O3'-P-O5'	21.07	144.02	104.00
1	C	17	DC	OP1-P-O3'	-19.85	61.53	105.20
1	E	30	DA	OP1-P-O3'	-19.48	62.34	105.20
2	D	4	DT	OP1-P-O3'	-19.46	62.38	105.20
1	C	30	DA	O3'-P-O5'	19.37	140.81	104.00
2	D	10	DT	O3'-P-O5'	19.10	140.29	104.00
1	C	18	DG	OP2-P-O3'	19.02	147.04	105.20
1	C	29	DC	OP2-P-O3'	18.92	146.83	105.20
1	E	30	DA	OP2-P-O3'	18.50	145.90	105.20
1	E	24	DT	OP1-P-O3'	-17.65	66.37	105.20
1	C	31	DT	O3'-P-O5'	17.51	137.28	104.00
1	C	16	DG	O3'-P-O5'	17.18	136.64	104.00
1	C	18	DG	OP1-P-O3'	-16.64	68.60	105.20
2	F	6	DA	OP2-P-O3'	16.33	141.13	105.20
2	D	12	DT	OP2-P-O3'	-16.03	69.93	105.20
1	E	22	DA	OP1-P-O3'	-15.79	70.45	105.20
1	E	22	DA	OP2-P-O3'	15.78	139.92	105.20
1	C	16	DG	OP2-P-O3'	-15.53	71.03	105.20
2	F	4	DT	OP1-P-O3'	-15.20	71.77	105.20
2	F	4	DT	OP2-P-O3'	15.14	138.50	105.20

Continued on next page...

Continued from previous page...

Mol	Chain	Res	Type	Atoms	Z	Observed(°)	Ideal(°)
2	F	8	DA	OP2-P-O3'	14.89	137.97	105.20
1	E	24	DT	O3'-P-O5'	-14.72	76.04	104.00
1	C	27	DG	O3'-P-O5'	-14.71	76.05	104.00
1	E	27	DG	OP2-P-O3'	14.66	137.46	105.20
1	C	32	DA	OP2-P-O3'	14.54	137.18	105.20
1	E	32	DA	OP2-P-O3'	14.50	137.10	105.20
2	F	10	DT	OP1-P-O3'	-14.33	73.67	105.20
1	E	32	DA	OP1-P-O3'	-14.24	73.88	105.20
1	C	20	DA	OP1-P-O3'	-14.18	74.00	105.20
1	E	20	DA	OP2-P-O3'	14.07	136.16	105.20
1	C	26	DT	OP1-P-O3'	-13.76	74.93	105.20
2	F	13	DT	O3'-P-O5'	-13.70	77.97	104.00
1	E	26	DT	C1'-O4'-C4'	-13.60	96.50	110.10
1	E	29	DC	OP2-P-O3'	13.37	134.62	105.20
2	F	14	DC	OP2-P-O3'	-13.33	75.86	105.20
1	C	23	DG	OP1-P-O3'	-13.26	76.03	105.20
2	F	11	DT	C1'-O4'-C4'	-13.20	96.91	110.10
1	E	23	DG	O3'-P-O5'	12.99	128.69	104.00
2	D	13	DT	C1'-O4'-C4'	-12.83	97.27	110.10
2	F	11	DT	O3'-P-O5'	12.75	128.23	104.00
1	C	26	DT	O4'-C4'-C3'	-12.70	98.38	106.00
1	E	17	DC	O3'-P-O5'	12.47	127.70	104.00
1	C	29	DC	OP1-P-O3'	-12.35	78.02	105.20
2	D	5	DC	OP1-P-O3'	-12.16	78.45	105.20
1	C	29	DC	O4'-C1'-N1	11.95	116.36	108.00
2	F	10	DT	O3'-P-O5'	11.79	126.40	104.00
1	C	27	DG	OP1-P-O3'	-11.70	79.46	105.20
2	D	6	DA	OP2-P-O3'	11.59	130.69	105.20
2	D	3	DG	O3'-P-O5'	11.51	125.88	104.00
1	E	21	DA	OP1-P-O3'	-11.50	79.90	105.20
1	E	26	DT	O3'-P-O5'	-11.50	82.15	104.00
2	D	11	DT	C1'-O4'-C4'	-11.48	98.62	110.10
2	D	9	DC	OP2-P-O3'	-11.46	79.98	105.20
1	C	20	DA	OP2-P-O3'	11.26	129.98	105.20
1	C	17	DC	OP2-P-O3'	11.24	129.93	105.20
2	D	14	DC	OP2-P-O3'	-11.24	80.47	105.20
2	D	5	DC	O3'-P-O5'	-11.24	82.64	104.00
3	B	82	ARG	NE-CZ-NH2	-11.22	114.69	120.30
2	F	7	DC	OP2-P-O3'	11.18	129.80	105.20
1	E	26	DT	OP2-P-O3'	11.11	129.65	105.20
2	F	9	DC	OP2-P-O3'	10.90	129.19	105.20
1	C	32	DA	OP1-P-O3'	-10.90	81.22	105.20

Continued on next page...

Continued from previous page...

Mol	Chain	Res	Type	Atoms	Z	Observed(°)	Ideal(°)
1	E	31	DT	OP2-P-O3'	-10.84	81.35	105.20
3	A	142	ARG	NE-CZ-NH1	10.75	125.68	120.30
2	F	7	DC	O3'-P-O5'	-10.74	83.59	104.00
1	E	19	DA	OP1-P-O3'	-10.61	81.86	105.20
2	F	8	DA	OP1-P-O3'	-10.60	81.88	105.20
1	C	26	DT	O3'-P-O5'	-10.60	83.87	104.00
1	C	25	DG	O3'-P-O5'	-10.49	84.08	104.00
1	E	31	DT	O4'-C1'-N1	10.48	115.34	108.00
2	D	4	DT	O3'-P-O5'	-10.41	84.22	104.00
1	C	23	DG	OP2-P-O3'	10.32	127.91	105.20
1	E	19	DA	OP2-P-O3'	-10.32	82.49	105.20
2	D	3	DG	OP2-P-O3'	10.23	127.72	105.20
2	F	12	DT	OP2-P-O3'	10.09	127.39	105.20
2	F	11	DT	OP1-P-O3'	-9.87	83.50	105.20
2	F	6	DA	OP1-P-O3'	-9.86	83.50	105.20
1	E	21	DA	OP2-P-O3'	9.77	126.69	105.20
3	B	180	ARG	NE-CZ-NH2	-9.75	115.43	120.30
1	C	31	DT	C1'-O4'-C4'	-9.74	100.36	110.10
1	C	30	DA	P-O3'-C3'	9.43	131.01	119.70
2	F	12	DT	O3'-P-O5'	-9.42	86.11	104.00
2	D	10	DT	OP1-P-O3'	-9.41	84.50	105.20
1	E	31	DT	O3'-P-O5'	9.26	121.60	104.00
1	E	26	DT	O4'-C1'-N1	9.23	114.47	108.00
2	D	9	DC	OP1-P-O3'	-9.14	85.08	105.20
1	E	16	DG	OP1-P-O3'	9.02	125.05	105.20
2	F	5	DC	N1-C2-O2	8.92	124.25	118.90
3	B	122	ARG	NE-CZ-NH1	8.89	124.75	120.30
1	E	29	DC	O3'-P-O5'	-8.72	87.43	104.00
1	C	31	DT	C6-C5-C7	-8.69	117.69	122.90
1	E	18	DG	P-O3'-C3'	8.67	130.10	119.70
1	C	31	DT	O4'-C1'-N1	8.63	114.04	108.00
3	B	180	ARG	NE-CZ-NH1	8.61	124.61	120.30
3	B	85	TRP	CD1-CG-CD2	8.61	113.19	106.30
1	E	22	DA	C1'-O4'-C4'	-8.54	101.56	110.10
2	D	14	DC	O3'-P-O5'	8.53	120.20	104.00
2	F	6	DA	O3'-P-O5'	-8.52	87.82	104.00
2	F	12	DT	C6-C5-C7	-8.50	117.80	122.90
1	C	25	DG	OP2-P-O3'	8.45	123.78	105.20
1	E	20	DA	O3'-P-O5'	-8.40	88.05	104.00
3	B	169	ARG	NE-CZ-NH1	8.36	124.48	120.30
1	C	17	DC	O3'-P-O5'	8.33	119.82	104.00
2	D	11	DT	O4'-C1'-N1	8.24	113.77	108.00

Continued on next page...

Continued from previous page...

Mol	Chain	Res	Type	Atoms	Z	Observed(°)	Ideal(°)
1	C	33	DT	C6-C5-C7	-8.12	118.03	122.90
1	C	28	DA	OP1-P-O3'	-8.11	87.37	105.20
1	E	31	DT	C1'-O4'-C4'	-8.11	101.99	110.10
3	A	85	TRP	CD1-CG-CD2	8.08	112.77	106.30
1	C	26	DT	C6-C5-C7	-8.03	118.08	122.90
2	F	14	DC	P-O3'-C3'	8.02	129.33	119.70
3	A	13	TRP	CD1-CG-CD2	8.01	112.71	106.30
3	B	87	ARG	NE-CZ-NH1	7.97	124.28	120.30
2	D	13	DT	C6-C5-C7	-7.92	118.15	122.90
1	E	23	DG	OP1-P-O3'	-7.90	87.81	105.20
2	F	10	DT	OP2-P-O3'	7.85	122.47	105.20
1	E	28	DA	O4'-C1'-N9	7.85	113.49	108.00
3	B	85	TRP	CE2-CD2-CG	-7.84	101.02	107.30
2	F	11	DT	O4'-C4'-C3'	-7.80	101.32	106.00
3	B	142	ARG	NE-CZ-NH1	7.79	124.20	120.30
1	C	21	DA	C1'-O4'-C4'	-7.67	102.43	110.10
2	F	12	DT	C1'-O4'-C4'	-7.57	102.53	110.10
3	A	185	ARG	NE-CZ-NH1	7.55	124.08	120.30
2	D	8	DA	O3'-P-O5'	7.53	118.31	104.00
1	E	33	DT	C6-C5-C7	-7.46	118.42	122.90
1	C	22	DA	P-O3'-C3'	7.45	128.64	119.70
1	E	17	DC	N1-C2-O2	7.43	123.36	118.90
2	F	7	DC	O4'-C1'-C2'	-7.41	99.97	105.90
3	B	142	ARG	NE-CZ-NH2	-7.41	116.60	120.30
2	D	8	DA	OP1-P-O3'	-7.40	88.92	105.20
1	C	18	DG	O4'-C1'-C2'	-7.36	100.01	105.90
1	C	24	DT	C6-C5-C7	-7.34	118.50	122.90
1	E	27	DG	O3'-P-O5'	-7.31	90.12	104.00
2	D	12	DT	P-O3'-C3'	7.29	128.45	119.70
3	A	99	TYR	CB-CG-CD2	-7.29	116.63	121.00
2	D	10	DT	C1'-O4'-C4'	-7.25	102.85	110.10
1	C	21	DA	OP2-P-O3'	7.25	121.14	105.20
3	A	13	TRP	CE2-CD2-CG	-7.22	101.53	107.30
1	C	28	DA	O4'-C1'-N9	7.19	113.03	108.00
1	C	19	DA	P-O3'-C3'	7.18	128.32	119.70
1	E	28	DA	OP2-P-O3'	7.17	120.98	105.20
1	E	20	DA	OP1-P-O3'	-7.16	89.44	105.20
3	B	13	TRP	CE2-CD2-CG	-7.16	101.57	107.30
3	B	13	TRP	CD1-CG-CD2	7.15	112.02	106.30
2	F	6	DA	O4'-C1'-C2'	-7.15	100.18	105.90
1	C	29	DC	C4'-C3'-C2'	-7.14	96.68	103.10
2	D	7	DC	N1-C2-O2	7.13	123.18	118.90

Continued on next page...

Continued from previous page...

Mol	Chain	Res	Type	Atoms	Z	Observed(°)	Ideal(°)
2	F	7	DC	N1-C2-O2	7.13	123.18	118.90
3	A	142	ARG	NE-CZ-NH2	-7.12	116.74	120.30
3	A	34	GLU	CA-CB-CG	7.12	129.06	113.40
1	E	31	DT	P-O3'-C3'	7.05	128.16	119.70
1	C	30	DA	OP1-P-O3'	-7.05	89.70	105.20
2	D	13	DT	O4'-C1'-N1	6.96	112.87	108.00
2	F	13	DT	OP2-P-O3'	6.96	120.50	105.20
2	D	14	DC	OP1-P-O3'	6.95	120.48	105.20
2	F	9	DC	N1-C2-O2	6.89	123.03	118.90
3	A	85	TRP	CE2-CD2-CG	-6.87	101.80	107.30
2	D	12	DT	OP1-P-O3'	-6.86	90.11	105.20
3	A	185	ARG	NE-CZ-NH2	-6.85	116.88	120.30
1	C	26	DT	N3-C2-O2	-6.81	118.21	122.30
1	E	26	DT	C6-C5-C7	-6.79	118.83	122.90
3	B	169	ARG	NE-CZ-NH2	-6.76	116.92	120.30
1	E	31	DT	N3-C2-O2	-6.71	118.28	122.30
1	C	21	DA	O3'-P-O5'	-6.68	91.31	104.00
2	F	13	DT	N3-C2-O2	-6.67	118.30	122.30
3	A	82	ARG	NE-CZ-NH2	-6.65	116.98	120.30
1	C	22	DA	O3'-P-O5'	6.63	116.60	104.00
2	D	9	DC	N1-C2-O2	6.62	122.87	118.90
2	F	11	DT	O5'-P-OP1	-6.62	99.75	105.70
2	D	12	DT	C6-C5-C7	-6.57	118.96	122.90
1	E	17	DC	OP2-P-O3'	-6.56	90.76	105.20
3	A	103	ARG	NE-CZ-NH1	6.53	123.56	120.30
3	B	63	TYR	CB-CG-CD1	-6.52	117.08	121.00
3	A	123	ARG	NE-CZ-NH1	6.52	123.56	120.30
2	F	13	DT	C4-C5-C6	6.50	121.90	118.00
1	C	18	DG	P-O5'-C5'	6.47	131.26	120.90
1	C	24	DT	C4-C5-C6	6.43	121.86	118.00
2	F	13	DT	O4'-C1'-C2'	-6.43	100.75	105.90
3	A	40	TYR	CB-CG-CD1	-6.42	117.14	121.00
1	E	24	DT	P-O3'-C3'	6.39	127.37	119.70
2	F	5	DC	N3-C2-O2	-6.38	117.43	121.90
1	C	18	DG	C8-N9-C4	-6.38	103.85	106.40
2	F	4	DT	C4-C5-C6	6.38	121.83	118.00
2	F	10	DT	C4-C5-C6	6.37	121.82	118.00
1	C	26	DT	C1'-O4'-C4'	-6.37	103.73	110.10
1	E	28	DA	P-O5'-C5'	6.29	130.96	120.90
3	A	23	TYR	CB-CG-CD1	-6.28	117.23	121.00
3	A	47	VAL	N-CA-CB	-6.28	97.69	111.50
1	E	27	DG	N9-C4-C5	6.26	107.91	105.40

Continued on next page...

Continued from previous page...

Mol	Chain	Res	Type	Atoms	Z	Observed(°)	Ideal(°)
2	D	10	DT	C6-C5-C7	-6.26	119.14	122.90
1	C	30	DA	O4'-C1'-C2'	-6.25	100.90	105.90
2	D	6	DA	OP1-P-O3'	-6.22	91.53	105.20
2	D	12	DT	C4-C5-C6	6.21	121.72	118.00
2	F	7	DC	N3-C2-O2	-6.19	117.57	121.90
2	F	12	DT	N3-C2-O2	-6.17	118.60	122.30
2	F	14	DC	N1-C2-O2	6.16	122.60	118.90
3	B	204	VAL	N-CA-C	-6.14	94.41	111.00
2	D	6	DA	O4'-C4'-C3'	6.09	109.66	106.00
1	E	29	DC	C4'-C3'-C2'	-6.08	97.63	103.10
1	C	17	DC	C1'-O4'-C4'	-6.07	104.03	110.10
3	A	97	ILE	CB-CA-C	-6.07	99.47	111.60
2	D	4	DT	C6-C5-C7	-6.05	119.27	122.90
3	B	82	ARG	NE-CZ-NH1	6.05	123.33	120.30
2	D	14	DC	N3-C2-O2	-6.03	117.68	121.90
1	E	31	DT	C6-C5-C7	-6.00	119.30	122.90
1	E	16	DG	OP2-P-O3'	-5.99	92.01	105.20
2	D	9	DC	O4'-C1'-N1	5.98	112.19	108.00
1	C	31	DT	O4'-C4'-C3'	-5.98	102.11	104.50
1	C	33	DT	C4-C5-C6	5.95	121.57	118.00
1	C	16	DG	P-O3'-C3'	5.93	126.82	119.70
3	A	82	ARG	NE-CZ-NH1	5.92	123.26	120.30
1	E	24	DT	C1'-O4'-C4'	-5.90	104.20	110.10
1	E	19	DA	C1'-O4'-C4'	-5.90	104.20	110.10
1	C	31	DT	N3-C2-O2	-5.89	118.76	122.30
2	F	3	DG	O4'-C1'-C2'	5.89	110.61	105.90
1	C	28	DA	OP2-P-O3'	5.88	118.14	105.20
1	C	22	DA	P-O5'-C5'	5.85	130.26	120.90
1	C	24	DT	C1'-O4'-C4'	-5.84	104.25	110.10
1	C	26	DT	C4-C5-C6	5.84	121.51	118.00
1	E	31	DT	OP1-P-O3'	5.77	117.89	105.20
3	B	85	TRP	CG-CD1-NE1	-5.73	104.37	110.10
1	E	27	DG	OP1-P-O3'	-5.72	92.61	105.20
2	D	13	DT	C4-C5-C6	5.72	121.43	118.00
1	C	17	DC	N1-C2-O2	5.71	122.33	118.90
1	C	23	DG	O4'-C1'-C2'	-5.70	101.34	105.90
3	A	176	VAL	CA-CB-CG2	-5.68	102.38	110.90
1	C	18	DG	P-O3'-C3'	5.67	126.50	119.70
1	C	18	DG	C1'-O4'-C4'	-5.66	104.44	110.10
1	C	28	DA	O3'-P-O5'	5.65	114.73	104.00
2	D	6	DA	P-O3'-C3'	5.65	126.48	119.70
3	A	17	HIS	CA-CB-CG	5.65	123.20	113.60

Continued on next page...

Continued from previous page...

Mol	Chain	Res	Type	Atoms	Z	Observed(°)	Ideal(°)
2	F	13	DT	C6-C5-C7	-5.65	119.51	122.90
2	F	11	DT	N3-C2-O2	-5.64	118.92	122.30
3	B	85	TRP	CG-CD2-CE3	5.64	138.97	133.90
1	C	17	DC	N3-C2-O2	-5.62	117.97	121.90
2	F	3	DG	O3'-P-O5'	5.62	114.68	104.00
1	E	24	DT	C4-C5-C6	5.61	121.36	118.00
2	F	10	DT	C6-C5-C7	-5.59	119.55	122.90
3	B	185	ARG	NE-CZ-NH2	-5.55	117.52	120.30
1	C	31	DT	C4-C5-C6	5.54	121.32	118.00
2	F	9	DC	O3'-P-O5'	-5.53	93.49	104.00
2	D	10	DT	C4-C5-C6	5.52	121.31	118.00
1	C	29	DC	N3-C2-O2	-5.51	118.04	121.90
2	F	11	DT	C6-C5-C7	-5.51	119.59	122.90
1	E	19	DA	O4'-C1'-N9	5.49	111.84	108.00
2	D	7	DC	N3-C2-O2	-5.48	118.06	121.90
1	E	29	DC	N1-C2-O2	5.47	122.18	118.90
1	E	16	DG	P-O3'-C3'	5.46	126.26	119.70
2	F	11	DT	C4-C5-C6	5.46	121.28	118.00
1	C	24	DT	O4'-C1'-N1	-5.46	104.18	108.00
2	D	8	DA	O4'-C1'-N9	5.46	111.82	108.00
2	D	14	DC	N1-C2-O2	5.46	122.17	118.90
1	E	31	DT	O4'-C4'-C3'	-5.43	102.33	104.50
2	D	7	DC	O4'-C1'-N1	5.43	111.80	108.00
2	F	4	DT	N3-C2-O2	-5.43	119.04	122.30
1	E	18	DG	C8-N9-C4	-5.39	104.25	106.40
2	D	5	DC	N1-C2-O2	5.38	122.13	118.90
1	E	33	DT	C4-C5-C6	5.36	121.21	118.00
1	E	17	DC	N3-C2-O2	-5.35	118.15	121.90
1	E	29	DC	O4'-C1'-N1	5.35	111.74	108.00
2	D	4	DT	C4-C5-C6	5.34	121.20	118.00
1	E	16	DG	C8-N9-C4	-5.33	104.27	106.40
2	F	12	DT	C4-C5-C7	5.32	122.19	119.00
2	D	11	DT	OP1-P-O3'	5.31	116.88	105.20
3	B	161	ASP	N-CA-C	-5.31	96.66	111.00
1	C	32	DA	O4'-C1'-N9	-5.30	104.29	108.00
2	D	10	DT	N3-C2-O2	-5.29	119.12	122.30
1	E	27	DG	C8-N9-C4	-5.29	104.28	106.40
2	D	13	DT	O3'-P-O5'	-5.27	93.98	104.00
3	B	176	VAL	CA-CB-CG2	-5.24	103.05	110.90
2	F	12	DT	C5-C6-N1	-5.24	120.56	123.70
2	F	3	DG	O4'-C4'-C3'	-5.21	102.42	104.50
3	B	85	TRP	CB-CG-CD1	-5.21	120.23	127.00

Continued on next page...

Continued from previous page...

Mol	Chain	Res	Type	Atoms	Z	Observed(°)	Ideal(°)
3	B	139	VAL	CG1-CB-CG2	-5.17	102.62	110.90
3	A	93	GLU	N-CA-C	-5.17	97.04	111.00
3	B	13	TRP	CG-CD2-CE3	5.11	138.50	133.90
2	D	11	DT	C6-C5-C7	-5.09	119.84	122.90
2	D	7	DC	OP1-P-O3'	5.09	116.39	105.20
1	E	26	DT	C4-C5-C6	5.09	121.05	118.00
3	B	119	GLN	CA-CB-CG	-5.06	102.26	113.40
1	C	29	DC	O4'-C4'-C3'	-5.02	102.49	104.50
1	E	28	DA	O3'-P-O5'	-5.01	94.49	104.00

There are no chirality outliers.

All (5) planarity outliers are listed below:

Mol	Chain	Res	Type	Group
3	A	159	HIS	Peptide
1	C	32	DA	Sidechain
2	D	3	DG	Sidechain
2	F	11	DT	Sidechain
2	F	3	DG	Sidechain

5.2 Too-close contacts

In the following table, the Non-H and H(model) columns list the number of non-hydrogen atoms and hydrogen atoms in the chain respectively. The H(added) column lists the number of hydrogen atoms added and optimized by MolProbity. The Clashes column lists the number of clashes within the asymmetric unit, whereas Symm-Clashes lists symmetry-related clashes.

Mol	Chain	Non-H	H(model)	H(added)	Clashes	Symm-Clashes
1	C	372	39	204	6	1
1	E	372	39	204	3	0
2	D	259	25	150	3	0
2	F	259	25	150	2	1
3	A	1556	361	1600	41	0
3	B	1556	361	1600	42	0
4	A	22	3	11	3	0
4	B	22	3	11	3	0
All	All	4418	856	3930	88	1

The all-atom clashscore is defined as the number of clashes found per 1000 atoms (including hydrogen atoms). The all-atom clashscore for this structure is 11.

All (88) close contacts within the same asymmetric unit are listed below, sorted by their clash

magnitude.

Atom-1	Atom-2	Interatomic distance (Å)	Clash overlap (Å)
4:A:206:CMP:H2	4:A:206:CMP:C2	0.97	1.49
4:B:206:CMP:H2	4:B:206:CMP:C2	0.97	1.48
3:A:17:HIS:HB2	3:A:101:LYS:HZ3	1.40	0.86
3:B:30:ILE:HG23	3:B:82:ARG:HD3	1.63	0.79
3:A:30:ILE:HG23	3:A:82:ARG:HD3	1.69	0.75
3:A:17:HIS:HB2	3:A:101:LYS:NZ	2.04	0.71
3:A:122:ARG:HH21	3:A:125:GLN:HG3	1.56	0.71
3:A:34:GLU:HB2	3:A:82:ARG:HG3	1.73	0.70
3:A:133:ASN:HA	3:A:137:LEU:HD13	1.72	0.70
3:B:46:SER:HB2	3:B:89:LYS:HE3	1.72	0.69
3:B:122:ARG:HH21	3:B:125:GLN:HG3	1.60	0.66
3:B:18:CYS:SG	3:B:97:ILE:HG23	2.38	0.64
1:C:24:DT:H2'	3:B:180:ARG:HH21	1.63	0.63
1:C:24:DT:H2'	3:B:180:ARG:NH2	2.14	0.62
1:E:23:DG:H5''	3:A:168:THR:HG21	1.81	0.61
3:B:39:LEU:HD23	3:B:97:ILE:HD11	1.82	0.61
3:A:50:LEU:HD12	3:A:85:TRP:HB2	1.83	0.60
4:A:206:CMP:H2	4:A:206:CMP:N3	1.93	0.60
3:B:45:GLY:HA3	3:B:92:CYS:SG	2.42	0.60
3:A:112:ILE:HD12	3:A:113:LEU:H	1.67	0.59
3:B:197:SER:HB2	3:B:203:ILE:HD13	1.85	0.59
3:B:71:GLY:HA2	4:B:206:CMP:O2P	2.04	0.57
3:A:18:CYS:SG	3:A:97:ILE:HG13	2.45	0.57
3:A:72:GLU:HG2	3:A:73:LEU:HD13	1.87	0.57
3:B:122:ARG:HH21	3:B:125:GLN:HE21	1.51	0.56
3:A:70:ILE:HG21	3:A:86:VAL:HG11	1.87	0.56
3:A:195:LEU:O	3:A:205:VAL:HG22	2.06	0.56
3:B:168:THR:HG23	3:B:171:GLU:H	1.71	0.54
3:B:109:ASN:OD1	3:B:111:ASP:HB3	2.09	0.53
3:B:122:ARG:NH2	3:B:125:GLN:HE21	2.08	0.52
3:B:122:ARG:HH21	3:B:125:GLN:CG	2.23	0.51
3:A:17:HIS:CD2	3:A:17:HIS:N	2.79	0.51
3:B:97:ILE:HD13	3:B:102:PHE:HB2	1.93	0.51
3:A:147:LEU:HD21	3:A:172:ILE:HD13	1.92	0.51
3:A:163:MET:O	3:A:203:ILE:HA	2.12	0.50
3:A:112:ILE:HD12	3:A:113:LEU:N	2.26	0.49
3:A:113:LEU:HD21	3:B:114:MET:SD	2.51	0.49
3:B:195:LEU:O	3:B:205:VAL:HG22	2.12	0.49
3:A:49:VAL:HG11	4:A:206:CMP:C4	2.48	0.49
3:A:179:SER:O	3:A:183:VAL:HG23	2.13	0.48
1:C:31:DT:H2''	1:C:32:DA:N7	2.28	0.48

Continued on next page...

Continued from previous page...

Atom-1	Atom-2	Interatomic distance (Å)	Clash overlap (Å)
1:E:24:DT:OP2	3:A:170:GLN:HG2	2.14	0.48
1:C:33:DT:H2''	3:A:182:THR:HG21	1.97	0.47
2:D:14:DC:H2''	2:D:15:DG:C8	2.50	0.46
3:A:155:ASP:O	3:A:157:MET:SD	2.73	0.46
3:B:122:ARG:HH21	3:B:125:GLN:NE2	2.13	0.46
2:D:10:DT:H2''	2:D:11:DT:O4'	2.16	0.46
2:F:14:DC:OP1	3:B:26:LYS:HE2	2.16	0.46
3:A:169:ARG:HH12	3:A:200:GLY:H	1.64	0.46
3:A:9:PRO:HB3	3:A:115:ARG:HH22	1.80	0.46
3:A:52:LYS:NZ	3:A:52:LYS:HB2	2.31	0.46
3:B:40:TYR:HD2	3:B:94:VAL:HG11	1.81	0.46
3:B:50:LEU:O	3:B:85:TRP:HE3	1.99	0.45
3:B:73:LEU:HD22	4:B:206:CMP:H3'	1.98	0.45
2:D:7:DC:H2''	2:D:8:DA:O4'	2.17	0.45
3:A:114:MET:SD	3:B:113:LEU:HD21	2.57	0.45
3:A:136:PHE:HB2	3:A:137:LEU:HD12	1.98	0.45
3:B:103:ARG:O	3:B:106:ILE:HB	2.18	0.44
3:B:122:ARG:NH2	3:B:125:GLN:HG3	2.31	0.44
3:A:101:LYS:O	3:A:104:GLN:HB2	2.18	0.44
3:B:101:LYS:O	3:B:105:LEU:HD13	2.19	0.43
3:A:167:ILE:HD11	3:A:171:GLU:HB3	1.99	0.43
3:B:72:GLU:O	3:B:75:LEU:HB3	2.18	0.43
1:C:24:DT:H5''	3:B:169:ARG:HD3	2.01	0.43
3:B:46:SER:CB	3:B:89:LYS:HE3	2.44	0.43
3:A:113:LEU:CD2	3:B:114:MET:SD	3.07	0.43
2:F:3:DG:H3'	3:B:179:SER:OG	2.19	0.42
3:A:114:MET:SD	3:B:113:LEU:HD11	2.59	0.42
3:A:122:ARG:NH2	3:A:125:GLN:HG3	2.31	0.42
3:A:159:HIS:CG	3:A:203:ILE:HG12	2.54	0.42
3:A:201:LYS:HE3	3:A:203:ILE:HD11	2.00	0.42
3:A:72:GLU:HG2	3:A:73:LEU:N	2.35	0.41
3:B:122:ARG:HH11	3:B:122:ARG:HG2	1.85	0.41
3:B:157:MET:SD	3:B:157:MET:N	2.93	0.41
3:B:32:GLN:HG2	3:B:33:GLY:N	2.35	0.41
1:E:16:DG:H4'	1:E:17:DC:O5'	2.20	0.41
3:B:9:PRO:N	3:B:12:GLU:HG2	2.36	0.41
1:C:29:DC:H2'	1:C:30:DA:C8	2.56	0.41
3:A:22:LYS:HG2	3:A:93:GLU:HG3	2.03	0.41
3:A:29:LEU:HB2	3:A:30:ILE:H	1.79	0.41
3:B:168:THR:HG22	3:B:171:GLU:HG2	2.02	0.41
3:A:101:LYS:HE3	3:A:101:LYS:HB3	1.92	0.40

Continued on next page...

Continued from previous page...

Atom-1	Atom-2	Interatomic distance (Å)	Clash overlap (Å)
3:B:49:VAL:HG22	3:B:86:VAL:HG22	2.03	0.40
3:A:32:GLN:HG2	3:A:82:ARG:O	2.21	0.40
3:B:35:LYS:HD3	3:B:35:LYS:H	1.86	0.40
3:B:109:ASN:HA	3:B:110:PRO:HD3	1.84	0.40
3:B:143:ILE:HG12	3:B:176:VAL:HG21	2.03	0.40
3:A:180:ARG:HG3	3:A:181:GLU:N	2.36	0.40

All (1) symmetry-related close contacts are listed below. The label for Atom-2 includes the symmetry operator and encoded unit-cell translations to be applied.

Atom-1	Atom-2	Interatomic distance (Å)	Clash overlap (Å)
1:C:16:DG:H1	2:F:15:DG:O6[3_554]	1.50	0.10

5.3 Torsion angles [i](#)

5.3.1 Protein backbone [i](#)

In the following table, the Percentiles column shows the percent Ramachandran outliers of the chain as a percentile score with respect to all X-ray entries followed by that with respect to entries of similar resolution.

The Analysed column shows the number of residues for which the backbone conformation was analysed, and the total number of residues.

Mol	Chain	Analysed	Favoured	Allowed	Outliers	Percentiles	
3	A	195/205 (95%)	176 (90%)	15 (8%)	4 (2%)	7	33
3	B	195/205 (95%)	184 (94%)	4 (2%)	7 (4%)	3	19
All	All	390/410 (95%)	360 (92%)	19 (5%)	11 (3%)	5	25

All (11) Ramachandran outliers are listed below:

Mol	Chain	Res	Type
3	A	155	ASP
3	A	160	PRO
3	B	55	GLU
3	B	75	LEU
3	B	72	GLU
3	B	154	PRO
3	B	199	HIS

Continued on next page...

Continued from previous page...

Mol	Chain	Res	Type
3	A	199	HIS
3	B	54	GLU
3	B	155	ASP
3	A	154	PRO

5.3.2 Protein sidechains [i](#)

In the following table, the Percentiles column shows the percent sidechain outliers of the chain as a percentile score with respect to all X-ray entries followed by that with respect to entries of similar resolution.

The Analysed column shows the number of residues for which the sidechain conformation was analysed, and the total number of residues.

Mol	Chain	Analysed	Rotameric	Outliers	Percentiles	
3	A	170/177 (96%)	144 (85%)	26 (15%)	2	13
3	B	170/177 (96%)	143 (84%)	27 (16%)	2	12
All	All	340/354 (96%)	287 (84%)	53 (16%)	2	13

All (53) residues with a non-rotameric sidechain are listed below:

Mol	Chain	Res	Type
3	A	11	LEU
3	A	17	HIS
3	A	19	HIS
3	A	29	LEU
3	A	31	HIS
3	A	32	GLN
3	A	35	LYS
3	A	37	GLU
3	A	44	LYS
3	A	47	VAL
3	A	50	LEU
3	A	64	LEU
3	A	73	LEU
3	A	87	ARG
3	A	90	THR
3	A	93	GLU
3	A	98	SER
3	A	100	LYS
3	A	101	LYS

Continued on next page...

Continued from previous page...

Mol	Chain	Res	Type
3	A	103	ARG
3	A	112	ILE
3	A	125	GLN
3	A	145	GLN
3	A	153	GLN
3	A	189	MET
3	A	194	ASN
3	B	10	THR
3	B	19	HIS
3	B	22	LYS
3	B	29	LEU
3	B	35	LYS
3	B	37	GLU
3	B	38	THR
3	B	46	SER
3	B	47	VAL
3	B	55	GLU
3	B	78	GLU
3	B	80	GLN
3	B	90	THR
3	B	97	ILE
3	B	100	LYS
3	B	103	ARG
3	B	112	ILE
3	B	122	ARG
3	B	124	LEU
3	B	125	GLN
3	B	148	LEU
3	B	153	GLN
3	B	155	ASP
3	B	180	ARG
3	B	185	ARG
3	B	187	LEU
3	B	196	ILE

Sometimes sidechains can be flipped to improve hydrogen bonding and reduce clashes. All (6) such sidechains are listed below:

Mol	Chain	Res	Type
3	A	125	GLN
3	A	174	GLN
3	B	65	ASN
3	B	80	GLN

Continued on next page...

Continued from previous page...

Mol	Chain	Res	Type
3	B	125	GLN
3	B	153	GLN

5.3.3 RNA [i](#)

There are no RNA molecules in this entry.

5.4 Non-standard residues in protein, DNA, RNA chains [i](#)

There are no non-standard protein/DNA/RNA residues in this entry.

5.5 Carbohydrates [i](#)

There are no monosaccharides in this entry.

5.6 Ligand geometry [i](#)

2 ligands are modelled in this entry.

In the following table, the Counts columns list the number of bonds (or angles) for which Mogul statistics could be retrieved, the number of bonds (or angles) that are observed in the model and the number of bonds (or angles) that are defined in the Chemical Component Dictionary. The Link column lists molecule types, if any, to which the group is linked. The Z score for a bond length (or angle) is the number of standard deviations the observed value is removed from the expected value. A bond length (or angle) with $|Z| > 2$ is considered an outlier worth inspection. RMSZ is the root-mean-square of all Z scores of the bond lengths (or angles).

Mol	Type	Chain	Res	Link	Bond lengths			Bond angles		
					Counts	RMSZ	# Z > 2	Counts	RMSZ	# Z > 2
4	CMP	A	206	-	21,25,25	1.33	3 (14%)	24,39,39	1.98	5 (20%)
4	CMP	B	206	-	21,25,25	1.52	4 (19%)	24,39,39	1.99	8 (33%)

In the following table, the Chirals column lists the number of chiral outliers, the number of chiral centers analysed, the number of these observed in the model and the number defined in the Chemical Component Dictionary. Similar counts are reported in the Torsion and Rings columns. '-' means no outliers of that kind were identified.

Mol	Type	Chain	Res	Link	Chirals	Torsions	Rings
4	CMP	A	206	-	-	0/0/31/31	0/4/4/4
4	CMP	B	206	-	-	0/0/31/31	0/4/4/4

All (7) bond length outliers are listed below:

Mol	Chain	Res	Type	Atoms	Z	Observed(Å)	Ideal(Å)
4	B	206	CMP	P-O5'	3.71	1.61	1.57
4	A	206	CMP	C5'-C4'	-2.79	1.47	1.51
4	A	206	CMP	O5'-C5'	-2.73	1.42	1.46
4	B	206	CMP	C8-N7	-2.55	1.30	1.34
4	B	206	CMP	O3'-C3'	-2.53	1.40	1.44
4	B	206	CMP	P-O3'	2.39	1.61	1.57
4	A	206	CMP	O4'-C1'	2.29	1.43	1.40

All (13) bond angle outliers are listed below:

Mol	Chain	Res	Type	Atoms	Z	Observed(°)	Ideal(°)
4	B	206	CMP	O5'-P-O3'	5.33	112.84	105.70
4	A	206	CMP	O3'-C3'-C4'	-4.30	107.46	110.71
4	A	206	CMP	C4'-O4'-C1'	-3.91	106.34	109.92
4	A	206	CMP	O2P-P-O1P	3.72	119.99	108.56
4	A	206	CMP	O5'-P-O3'	-3.71	100.73	105.70
4	B	206	CMP	O2P-P-O1P	3.41	119.05	108.56
4	A	206	CMP	C5'-C4'-C3'	-3.29	106.38	112.56
4	B	206	CMP	O3'-C3'-C4'	-3.10	108.37	110.71
4	B	206	CMP	O3'-C3'-C2'	-2.87	112.79	115.61
4	B	206	CMP	O5'-P-O1P	-2.67	104.29	110.44
4	B	206	CMP	C2'-C3'-C4'	-2.31	99.20	103.24
4	B	206	CMP	O5'-C5'-C4'	2.04	110.47	105.71
4	B	206	CMP	C5-C6-N6	2.01	123.37	120.31

There are no chirality outliers.

There are no torsion outliers.

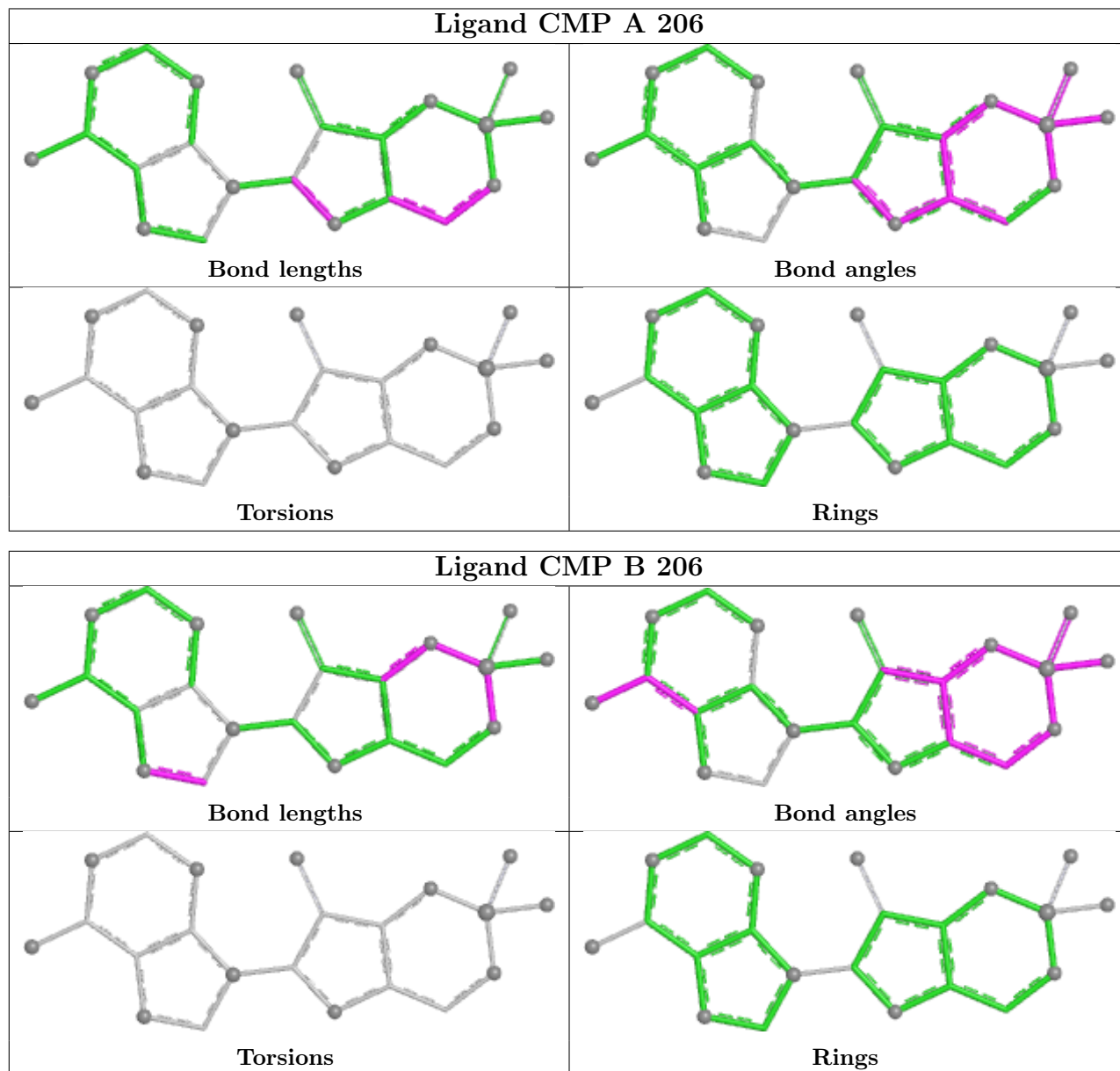
There are no ring outliers.

2 monomers are involved in 6 short contacts:

Mol	Chain	Res	Type	Clashes	Symm-Clashes
4	A	206	CMP	3	0
4	B	206	CMP	3	0

The following is a two-dimensional graphical depiction of Mogul quality analysis of bond lengths, bond angles, torsion angles, and ring geometry for all instances of the Ligand of Interest. In addition, ligands with molecular weight > 250 and outliers as shown on the validation Tables will also be included. For torsion angles, if less than 5% of the Mogul distribution of torsion angles is within 10 degrees of the torsion angle in question, then that torsion angle is considered an outlier. Any bond that is central to one or more torsion angles identified as an outlier by Mogul will be

highlighted in the graph. For rings, the root-mean-square deviation (RMSD) between the ring in question and similar rings identified by Mogul is calculated over all ring torsion angles. If the average RMSD is greater than 60 degrees and the minimal RMSD between the ring in question and any Mogul-identified rings is also greater than 60 degrees, then that ring is considered an outlier. The outliers are highlighted in purple. The color gray indicates Mogul did not find sufficient equivalents in the CSD to analyse the geometry.



5.7 Other polymers [i](#)

There are no such residues in this entry.

5.8 Polymer linkage issues

There are no chain breaks in this entry.

6 Fit of model and data [i](#)

6.1 Protein, DNA and RNA chains [i](#)

EDS was not executed - this section is therefore empty.

6.2 Non-standard residues in protein, DNA, RNA chains [i](#)

EDS was not executed - this section is therefore empty.

6.3 Carbohydrates [i](#)

EDS was not executed - this section is therefore empty.

6.4 Ligands [i](#)

EDS was not executed - this section is therefore empty.

6.5 Other polymers [i](#)

EDS was not executed - this section is therefore empty.