



Full wwPDB X-ray Structure Validation Report ⓘ

Nov 11, 2024 – 08:41 pm GMT

PDB ID : 8CGZ
Title : tubulin-AB8939 complex
Authors : Varela, P.F.; Gigant, B.
Deposited on : 2023-02-06
Resolution : 2.53 Å(reported)

This is a Full wwPDB X-ray Structure Validation Report for a publicly released PDB entry.

We welcome your comments at validation@mail.wwpdb.org

A user guide is available at

<https://www.wwpdb.org/validation/2017/XrayValidationReportHelp>

with specific help available everywhere you see the ⓘ symbol.

The types of validation reports are described at

<http://www.wwpdb.org/validation/2017/FAQs#types>.

The following versions of software and data (see [references ⓘ](#)) were used in the production of this report:

MolProbity : 4.02b-467
Mogul : 1.8.4, CSD as541be (2020)
Xtriage (Phenix) : 1.13
EDS : 3.0
buster-report : 1.1.7 (2018)
Percentile statistics : 20231227.v01 (using entries in the PDB archive December 27th 2023)
CCP4 : 9.0.003 (Gargrove)
Density-Fitness : 1.0.11
Ideal geometry (proteins) : Engh & Huber (2001)
Ideal geometry (DNA, RNA) : Parkinson et al. (1996)
Validation Pipeline (wwPDB-VP) : 2.39

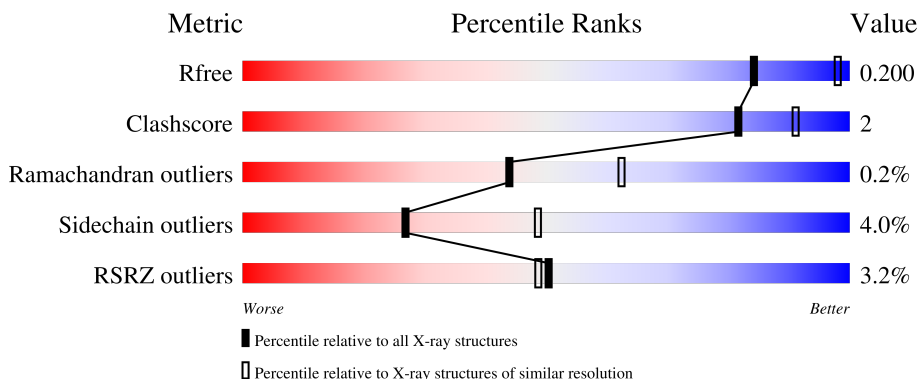
1 Overall quality at a glance

The following experimental techniques were used to determine the structure:

X-RAY DIFFRACTION

The reported resolution of this entry is 2.53 Å.

Percentile scores (ranging between 0-100) for global validation metrics of the entry are shown in the following graphic. The table shows the number of entries on which the scores are based.



Metric	Whole archive (#Entries)	Similar resolution (#Entries, resolution range(Å))
R_{free}	164625	6935 (2.54-2.50)
Clashscore	180529	7778 (2.54-2.50)
Ramachandran outliers	177936	7674 (2.54-2.50)
Sidechain outliers	177891	7676 (2.54-2.50)
RSRZ outliers	164620	6935 (2.54-2.50)

The table below summarises the geometric issues observed across the polymeric chains and their fit to the electron density. The red, orange, yellow and green segments of the lower bar indicate the fraction of residues that contain outliers for ≥ 3 , 2, 1 and 0 types of geometric quality criteria respectively. A grey segment represents the fraction of residues that are not modelled. The numeric value for each fraction is indicated below the corresponding segment, with a dot representing fractions $\leq 5\%$. The upper red bar (where present) indicates the fraction of residues that have poor fit to the electron density. The numeric value is given above the bar.

Mol	Chain	Length	Quality of chain
1	A	451	 7% 87% 7% 5%
1	C	451	 3% 88% 7% ..
2	B	445	 2% 89% 7% ..
2	D	445	 90% 6% ..
3	E	143	 73% 8% 19%

2 Entry composition

There are 9 unique types of molecules in this entry. The entry contains 14545 atoms, of which 0 are hydrogens and 0 are deuteriums.

In the tables below, the ZeroOcc column contains the number of atoms modelled with zero occupancy, the AltConf column contains the number of residues with at least one atom in alternate conformation and the Trace column contains the number of residues modelled with at most 2 atoms.

- Molecule 1 is a protein called Tubulin alpha chain.

Mol	Chain	Residues	Atoms					ZeroOcc	AltConf	Trace
			Total	C	N	O	S			
1	A	427	Total 3295	C 2085	N 562	O 626	S 22	0	0	0
1	C	431	Total 3359	C 2125	N 572	O 640	S 22	0	0	0

There are 4 discrepancies between the modelled and reference sequences:

Chain	Residue	Modelled	Actual	Comment	Reference
A	232	SER	GLY	conflict	UNP D0VWZ0
A	340	SER	THR	conflict	UNP D0VWZ0
C	232	SER	GLY	conflict	UNP D0VWZ0
C	340	SER	THR	conflict	UNP D0VWZ0

- Molecule 2 is a protein called Tubulin beta chain.

Mol	Chain	Residues	Atoms					ZeroOcc	AltConf	Trace
			Total	C	N	O	S			
2	B	430	Total 3361	C 2109	N 576	O 649	S 27	0	0	0
2	D	431	Total 3375	C 2120	N 580	O 648	S 27	0	0	0

There are 4 discrepancies between the modelled and reference sequences:

Chain	Residue	Modelled	Actual	Comment	Reference
B	203	CYS	SER	conflict	UNP D0VWY9
B	318	ILE	VAL	conflict	UNP D0VWY9
D	203	CYS	SER	conflict	UNP D0VWY9
D	318	ILE	VAL	conflict	UNP D0VWY9

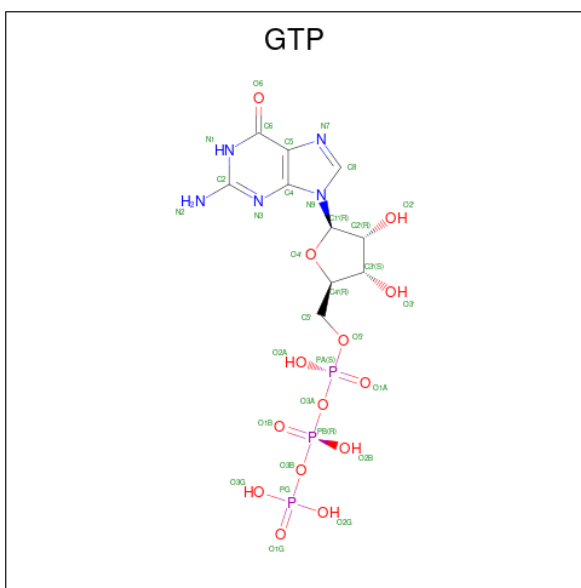
- Molecule 3 is a protein called Stathmin-4.

Mol	Chain	Residues	Atoms					ZeroOcc	AltConf	Trace
			Total	C	N	O	S			
3	E	116	905	559	169	174	3	0	0	0

There are 4 discrepancies between the modelled and reference sequences:

Chain	Residue	Modelled	Actual	Comment	Reference
E	3	ACE	-	acetylation	UNP P63043
E	4	ALA	-	expression tag	UNP P63043
E	14	ALA	CYS	engineered mutation	UNP P63043
E	20	TRP	PHE	engineered mutation	UNP P63043

- Molecule 4 is GUANOSINE-5'-TRIPHOSPHATE (three-letter code: GTP) (formula: $C_{10}H_{16}N_5O_{14}P_3$).

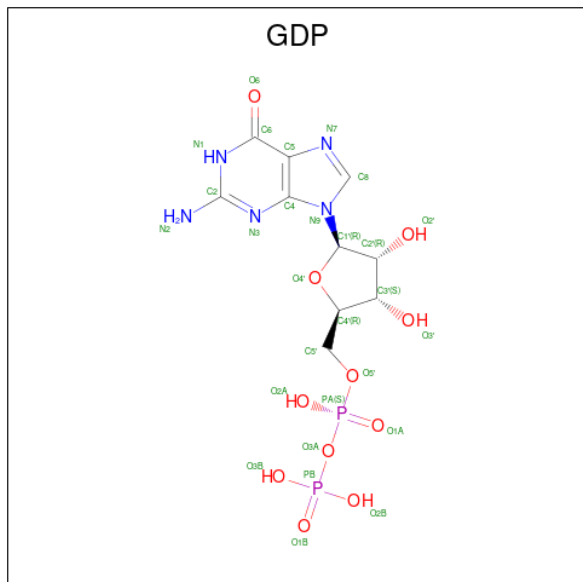


Mol	Chain	Residues	Atoms					ZeroOcc	AltConf
			Total	C	N	O	P		
4	A	1	32	10	5	14	3	0	0
4	C	1	32	10	5	14	3	0	0

- Molecule 5 is MAGNESIUM ION (three-letter code: MG) (formula: Mg).

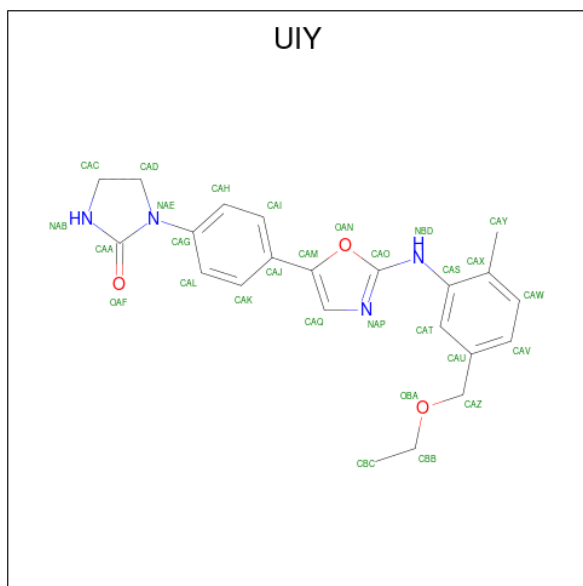
Mol	Chain	Residues	Atoms	ZeroOcc	AltConf
5	A	1	Total Mg 1 1	0	0
5	C	1	Total Mg 1 1	0	0

- Molecule 6 is GUANOSINE-5'-DIPHOSPHATE (three-letter code: GDP) (formula: $C_{10}H_{15}N_5O_{11}P_2$).



Mol	Chain	Residues	Atoms					ZeroOcc	AltConf
			Total	C	N	O	P		
6	B	1	Total	C	N	O	P	0	0
			28	10	5	11	2		
6	D	1	Total	C	N	O	P	0	0
			28	10	5	11	2		

- Molecule 7 is AB-8939 (three-letter code: UIY) (formula: $C_{22}H_{24}N_4O_3$) (labeled as "Ligand of Interest" by depositor).



Mol	Chain	Residues	Atoms				ZeroOcc	AltConf
7	B	1	Total	C	N	O	0	0
			29	22	4	3		
7	D	1	Total	C	N	O	0	0
			29	22	4	3		

- Molecule 8 is SULFATE ION (three-letter code: SO4) (formula: O₄S).



Mol	Chain	Residues	Atoms			ZeroOcc	AltConf
8	B	1	Total	O	S	0	0
			5	4	1		
8	B	1	Total	O	S	0	0
			5	4	1		
8	D	1	Total	O	S	0	0
			5	4	1		

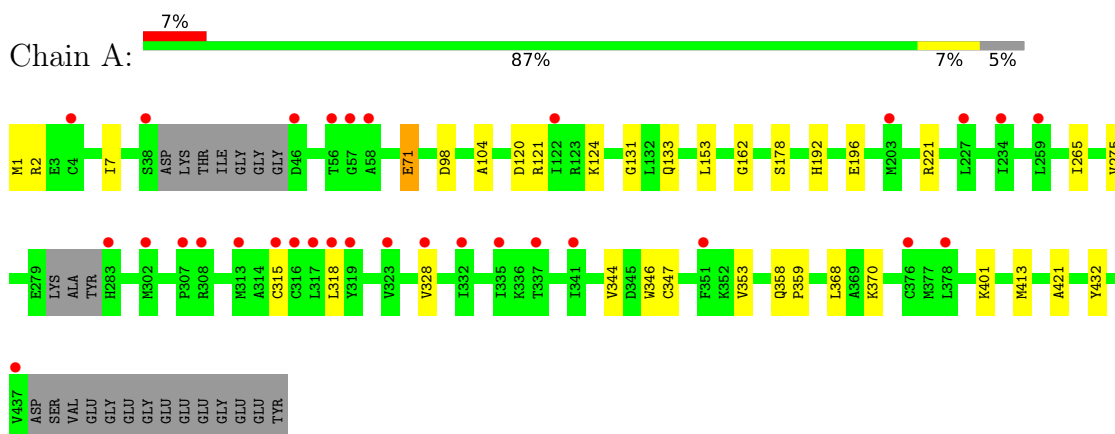
- Molecule 9 is water.

Mol	Chain	Residues	Atoms		ZeroOcc	AltConf
9	A	8	Total	O	0	0
			8	8		
9	B	7	Total	O	0	0
			7	7		
9	C	21	Total	O	0	0
			21	21		
9	D	18	Total	O	0	0
			18	18		
9	E	1	Total	O	0	0
			1	1		

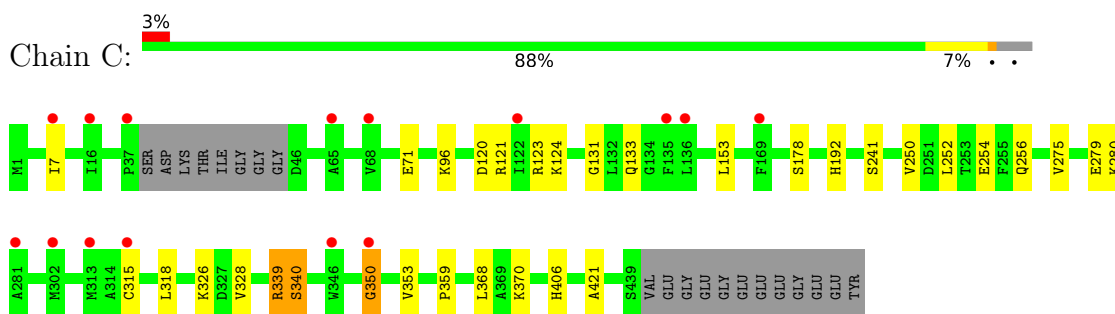
3 Residue-property plots [i](#)

These plots are drawn for all protein, RNA, DNA and oligosaccharide chains in the entry. The first graphic for a chain summarises the proportions of the various outlier classes displayed in the second graphic. The second graphic shows the sequence view annotated by issues in geometry and electron density. Residues are color-coded according to the number of geometric quality criteria for which they contain at least one outlier: green = 0, yellow = 1, orange = 2 and red = 3 or more. A red dot above a residue indicates a poor fit to the electron density ($RSRZ > 2$). Stretches of 2 or more consecutive residues without any outlier are shown as a green connector. Residues present in the sample, but not in the model, are shown in grey.

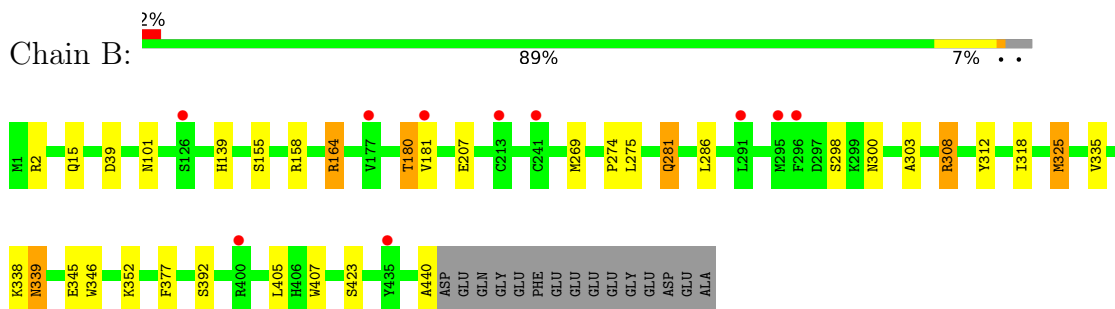
- Molecule 1: Tubulin alpha chain




- Molecule 1: Tubulin alpha chain

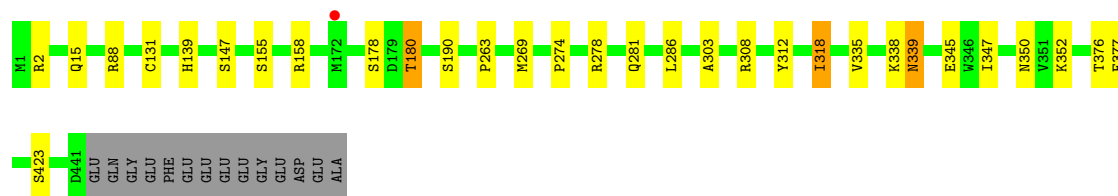


- Molecule 2: Tubulin beta chain




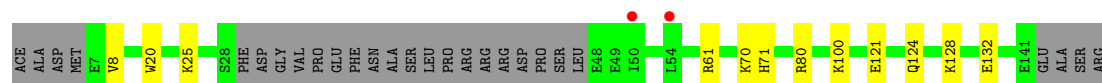
- Molecule 2: Tubulin beta chain

Chain D:  90% 6% ..



• Molecule 3: Stathmin-4

Chain E:  73% 8% 19%



4 Data and refinement statistics

Property	Value	Source
Space group	P 21 21 21	Depositor
Cell constants a, b, c, α , β , γ	65.69Å 128.76Å 253.20Å 90.00° 90.00° 90.00°	Depositor
Resolution (Å)	126.60 – 2.53 126.60 – 2.53	Depositor EDS
% Data completeness (in resolution range)	65.4 (126.60-2.53) 65.4 (126.60-2.53)	Depositor EDS
R_{merge}	(Not available)	Depositor
R_{sym}	(Not available)	Depositor
$\langle I/\sigma(I) \rangle$ ¹	1.46 (at 2.52Å)	Xtrriage
Refinement program	BUSTER 2.10.4	Depositor
R, R_{free}	0.197 , 0.235 0.201 , 0.200	Depositor DCC
R_{free} test set	27693 reflections (5.12%)	wwPDB-VP
Wilson B-factor (Å ²)	77.2	Xtrriage
Anisotropy	0.081	Xtrriage
Bulk solvent k_{sol} (e/Å ³), B_{sol} (Å ²)	0.31 , 55.6	EDS
L-test for twinning ²	$\langle L \rangle = 0.48$, $\langle L^2 \rangle = 0.31$	Xtrriage
Estimated twinning fraction	No twinning to report.	Xtrriage
F_o, F_c correlation	0.94	EDS
Total number of atoms	14545	wwPDB-VP
Average B, all atoms (Å ²)	94.0	wwPDB-VP

Xtrriage's analysis on translational NCS is as follows: *The largest off-origin peak in the Patterson function is 3.36% of the height of the origin peak. No significant pseudotranslation is detected.*

¹Intensities estimated from amplitudes.

²Theoretical values of $\langle |L| \rangle$, $\langle L^2 \rangle$ for acentric reflections are 0.5, 0.333 respectively for untwinned datasets, and 0.375, 0.2 for perfectly twinned datasets.

5 Model quality [i](#)

5.1 Standard geometry [i](#)

Bond lengths and bond angles in the following residue types are not validated in this section: GDP, GTP, SO4, UIY, MG

The Z score for a bond length (or angle) is the number of standard deviations the observed value is removed from the expected value. A bond length (or angle) with $|Z| > 5$ is considered an outlier worth inspection. RMSZ is the root-mean-square of all Z scores of the bond lengths (or angles).

Mol	Chain	Bond lengths		Bond angles	
		RMSZ	# Z >5	RMSZ	# Z >5
1	A	0.38	0/3368	0.52	0/4575
1	C	0.42	0/3433	0.56	0/4660
2	B	0.42	0/3434	0.56	0/4652
2	D	0.47	0/3450	0.56	0/4674
3	E	0.36	0/913	0.48	0/1220
All	All	0.42	0/14598	0.55	0/19781

There are no bond length outliers.

There are no bond angle outliers.

There are no chirality outliers.

There are no planarity outliers.

5.2 Too-close contacts [i](#)

In the following table, the Non-H and H(model) columns list the number of non-hydrogen atoms and hydrogen atoms in the chain respectively. The H(added) column lists the number of hydrogen atoms added and optimized by MolProbity. The Clashes column lists the number of clashes within the asymmetric unit, whereas Symm-Clashes lists symmetry-related clashes.

Mol	Chain	Non-H	H(model)	H(added)	Clashes	Symm-Clashes
1	A	3295	0	3166	21	0
1	C	3359	0	3266	18	0
2	B	3361	0	3240	16	0
2	D	3375	0	3254	13	0
3	E	905	0	876	6	0
4	A	32	0	12	0	0
4	C	32	0	12	0	0
5	A	1	0	0	0	0

Continued on next page...

Continued from previous page...

Mol	Chain	Non-H	H(model)	H(added)	Clashes	Symm-Clashes
5	C	1	0	0	0	0
6	B	28	0	12	0	0
6	D	28	0	12	0	0
7	B	29	0	0	1	0
7	D	29	0	0	1	0
8	B	10	0	0	0	0
8	D	5	0	0	1	0
9	A	8	0	0	0	0
9	B	7	0	0	0	0
9	C	21	0	0	0	0
9	D	18	0	0	0	0
9	E	1	0	0	0	0
All	All	14545	0	13850	68	0

The all-atom clashscore is defined as the number of clashes found per 1000 atoms (including hydrogen atoms). The all-atom clashscore for this structure is 2.

All (68) close contacts within the same asymmetric unit are listed below, sorted by their clash magnitude.

Atom-1	Atom-2	Interatomic distance (Å)	Clash overlap (Å)
3:E:124:GLN:HB3	3:E:128:LYS:HZ2	1.38	0.88
3:E:124:GLN:HB3	3:E:128:LYS:NZ	2.03	0.72
2:B:345:GLU:HG3	2:B:440:ALA:HB2	1.71	0.70
1:C:121:ARG:HD3	1:C:124:LYS:NZ	2.08	0.69
1:A:121:ARG:HD3	1:A:124:LYS:NZ	2.08	0.69
1:C:328:VAL:HG11	1:C:353:VAL:HG11	1.81	0.62
3:E:124:GLN:CB	3:E:128:LYS:HZ2	2.12	0.62
1:A:359:PRO:HB2	1:A:370:LYS:HZ1	1.65	0.61
1:A:328:VAL:HG11	1:A:353:VAL:HG11	1.86	0.58
1:A:2:ARG:HB3	1:A:133:GLN:HG2	1.86	0.58
3:E:124:GLN:C	3:E:128:LYS:HZ2	2.07	0.57
2:B:281:GLN:H	2:B:281:GLN:CD	2.10	0.55
1:A:2:ARG:HB3	1:A:133:GLN:CG	2.36	0.54
2:D:318:ILE:HG23	2:D:376:THR:HB	1.91	0.53
3:E:8:VAL:HG13	3:E:20:TRP:CD1	2.43	0.53
2:B:345:GLU:CG	2:B:440:ALA:HB2	2.39	0.53
2:B:269:MET:HG3	2:B:303:ALA:HB3	1.91	0.52
1:A:121:ARG:HA	1:A:124:LYS:HE2	1.93	0.50
2:B:275:LEU:HD11	2:B:300:ASN:HA	1.93	0.50
1:A:221:ARG:HD3	2:B:325:MET:HE3	1.92	0.50
2:D:274:PRO:HB3	2:D:286:LEU:HD22	1.94	0.49

Continued on next page...

Continued from previous page...

Atom-1	Atom-2	Interatomic distance (Å)	Clash overlap (Å)
1:C:121:ARG:HA	1:C:124:LYS:HE2	1.93	0.49
1:C:96:LYS:HE3	2:D:131:CYS:HB2	1.94	0.49
1:C:406:HIS:CG	2:D:263:PRO:HD3	2.48	0.49
1:C:250:VAL:HG13	1:C:254:GLU:HB3	1.94	0.48
2:D:269:MET:HG3	2:D:303:ALA:HB3	1.94	0.48
1:C:359:PRO:HB2	1:C:370:LYS:NZ	2.30	0.47
1:C:121:ARG:CD	1:C:124:LYS:NZ	2.77	0.47
1:A:121:ARG:HD3	1:A:124:LYS:HZ3	1.77	0.46
1:A:359:PRO:HB2	1:A:370:LYS:NZ	2.29	0.46
2:B:274:PRO:HB3	2:B:286:LEU:HD22	1.96	0.46
2:D:347:ILE:HG22	2:D:350:ASN:HB3	1.98	0.46
1:A:121:ARG:CD	1:A:124:LYS:NZ	2.76	0.46
1:C:339:ARG:NH1	1:C:340:SER:OG	2.50	0.45
2:D:147:SER:HB2	2:D:190:SER:OG	2.16	0.45
1:A:104:ALA:HB2	1:A:413:MET:HE1	1.99	0.44
1:A:344:VAL:HG21	1:A:346:TRP:CE2	2.53	0.44
2:B:164:ARG:HA	2:B:164:ARG:HE	1.83	0.44
1:A:413:MET:HB2	1:A:413:MET:HE3	1.79	0.44
1:C:121:ARG:CD	1:C:124:LYS:HZ1	2.31	0.44
2:B:407:TRP:CZ2	1:C:256:GLN:HB3	2.52	0.44
2:D:312:TYR:CE1	2:D:377:PHE:HZ	2.36	0.43
2:B:181:VAL:CG1	1:C:350:GLY:HA2	2.49	0.43
1:C:133:GLN:HB3	1:C:252:LEU:HD12	1.99	0.43
1:A:265:ILE:HG23	1:A:432:TYR:CE1	2.54	0.43
1:A:275:VAL:HG13	1:A:368:LEU:HD21	2.00	0.43
2:D:178:SER:HG	2:D:180:THR:HG23	1.83	0.43
2:D:338:LYS:C	2:D:339:ASN:HD22	2.23	0.42
1:C:7:ILE:HG21	1:C:153:LEU:HD21	2.02	0.42
2:B:312:TYR:CE1	2:B:377:PHE:HZ	2.37	0.42
2:D:278:ARG:NH2	8:D:503:SO4:O2	2.51	0.42
1:C:275:VAL:HG13	1:C:368:LEU:HD21	2.02	0.42
1:A:71:GLU:HB3	1:A:98:ASP:HB3	2.02	0.42
1:A:7:ILE:HG21	1:A:153:LEU:HD21	2.02	0.41
1:C:121:ARG:HD3	1:C:124:LYS:HZ1	1.83	0.41
1:C:121:ARG:HD3	1:C:124:LYS:HZ3	1.82	0.41
1:A:192:HIS:CG	1:A:421:ALA:HA	2.55	0.41
1:A:104:ALA:HB2	1:A:413:MET:CE	2.51	0.41
2:D:178:SER:OG	2:D:180:THR:HG23	2.21	0.41
2:B:338:LYS:C	2:B:339:ASN:HD22	2.23	0.41
1:C:192:HIS:CG	1:C:421:ALA:HA	2.56	0.41
1:A:346:TRP:CZ3	1:A:347:CYS:SG	3.08	0.41

Continued on next page...

Continued from previous page...

Atom-1	Atom-2	Interatomic distance (Å)	Clash overlap (Å)
2:B:352:LYS:HD2	7:B:502:UIY:CAL	2.51	0.41
3:E:124:GLN:C	3:E:128:LYS:NZ	2.74	0.41
1:A:401:LYS:HG3	2:B:346:TRP:CE3	2.56	0.41
2:B:101:ASN:HB2	2:B:180:THR:HG21	2.03	0.40
2:D:352:LYS:HD2	7:D:502:UIY:CAH	2.51	0.40
2:B:308:ARG:NH2	2:B:339:ASN:OD1	2.54	0.40

There are no symmetry-related clashes.

5.3 Torsion angles [i](#)

5.3.1 Protein backbone [i](#)

In the following table, the Percentiles column shows the percent Ramachandran outliers of the chain as a percentile score with respect to all X-ray entries followed by that with respect to entries of similar resolution.

The Analysed column shows the number of residues for which the backbone conformation was analysed, and the total number of residues.

Mol	Chain	Analysed	Favoured	Allowed	Outliers	Percentiles	
1	A	421/451 (93%)	411 (98%)	8 (2%)	2 (0%)	25	42
1	C	427/451 (95%)	415 (97%)	10 (2%)	2 (0%)	25	42
2	B	428/445 (96%)	417 (97%)	11 (3%)	0	100	100
2	D	429/445 (96%)	422 (98%)	7 (2%)	0	100	100
3	E	112/143 (78%)	110 (98%)	2 (2%)	0	100	100
All	All	1817/1935 (94%)	1775 (98%)	38 (2%)	4 (0%)	44	62

All (4) Ramachandran outliers are listed below:

Mol	Chain	Res	Type
1	A	162	GLY
1	C	350	GLY
1	A	131	GLY
1	C	131	GLY

5.3.2 Protein sidechains [i](#)

In the following table, the Percentiles column shows the percent sidechain outliers of the chain as a percentile score with respect to all X-ray entries followed by that with respect to entries of similar resolution.

The Analysed column shows the number of residues for which the sidechain conformation was analysed, and the total number of residues.

Mol	Chain	Analysed	Rotameric	Outliers	Percentiles
1	A	348/379 (92%)	340 (98%)	8 (2%)	45 70
1	C	361/379 (95%)	349 (97%)	12 (3%)	33 57
2	B	367/383 (96%)	348 (95%)	19 (5%)	19 37
2	D	368/383 (96%)	354 (96%)	14 (4%)	28 51
3	E	88/125 (70%)	80 (91%)	8 (9%)	7 14
All	All	1532/1649 (93%)	1471 (96%)	61 (4%)	27 48

All (61) residues with a non-rotameric sidechain are listed below:

Mol	Chain	Res	Type
1	A	1	MET
1	A	71	GLU
1	A	120	ASP
1	A	178	SER
1	A	196	GLU
1	A	315	CYS
1	A	318	LEU
1	A	358	GLN
2	B	2	ARG
2	B	15	GLN
2	B	39	ASP
2	B	139	HIS
2	B	155	SER
2	B	158	ARG
2	B	164	ARG
2	B	180	THR
2	B	207	GLU
2	B	281	GLN
2	B	298	SER
2	B	308	ARG
2	B	318	ILE
2	B	325	MET
2	B	335	VAL

Continued on next page...

Continued from previous page...

Mol	Chain	Res	Type
2	B	339	ASN
2	B	392	SER
2	B	405	LEU
2	B	423	SER
1	C	71	GLU
1	C	120	ASP
1	C	123	ARG
1	C	178	SER
1	C	241	SER
1	C	279	GLU
1	C	280	LYS
1	C	315	CYS
1	C	318	LEU
1	C	326	LYS
1	C	339	ARG
1	C	340	SER
2	D	2	ARG
2	D	15	GLN
2	D	88	ARG
2	D	139	HIS
2	D	155	SER
2	D	158	ARG
2	D	180	THR
2	D	281	GLN
2	D	308	ARG
2	D	318	ILE
2	D	335	VAL
2	D	339	ASN
2	D	345	GLU
2	D	423	SER
3	E	25	LYS
3	E	61	ARG
3	E	70	LYS
3	E	71	HIS
3	E	80	ARG
3	E	100	LYS
3	E	121	GLU
3	E	132	GLU

Sometimes sidechains can be flipped to improve hydrogen bonding and reduce clashes. There are no such sidechains identified.

5.3.3 RNA [i](#)

There are no RNA molecules in this entry.

5.4 Non-standard residues in protein, DNA, RNA chains [i](#)

There are no non-standard protein/DNA/RNA residues in this entry.

5.5 Carbohydrates [i](#)

There are no oligosaccharides in this entry.

5.6 Ligand geometry [i](#)

Of 11 ligands modelled in this entry, 2 are monoatomic - leaving 9 for Mogul analysis.

In the following table, the Counts columns list the number of bonds (or angles) for which Mogul statistics could be retrieved, the number of bonds (or angles) that are observed in the model and the number of bonds (or angles) that are defined in the Chemical Component Dictionary. The Link column lists molecule types, if any, to which the group is linked. The Z score for a bond length (or angle) is the number of standard deviations the observed value is removed from the expected value. A bond length (or angle) with $|Z| > 2$ is considered an outlier worth inspection. RMSZ is the root-mean-square of all Z scores of the bond lengths (or angles).

Mol	Type	Chain	Res	Link	Bond lengths			Bond angles		
					Counts	RMSZ	# Z > 2	Counts	RMSZ	# Z > 2
8	SO4	B	503	-	4,4,4	0.34	0	6,6,6	0.22	0
4	GTP	C	600	5	26,34,34	0.79	0	32,54,54	0.62	0
6	GDP	D	501	-	24,30,30	0.71	0	30,47,47	0.82	1 (3%)
8	SO4	B	504	-	4,4,4	0.20	0	6,6,6	0.12	0
8	SO4	D	503	-	4,4,4	0.25	0	6,6,6	0.48	0
6	GDP	B	501	-	24,30,30	0.70	0	30,47,47	0.71	0
4	GTP	A	600	5	26,34,34	0.82	2 (7%)	32,54,54	0.70	1 (3%)
7	UIY	D	502	-	30,32,32	1.50	5 (16%)	34,44,44	1.33	3 (8%)
7	UIY	B	502	-	30,32,32	1.90	3 (10%)	34,44,44	1.87	6 (17%)

In the following table, the Chirals column lists the number of chiral outliers, the number of chiral centers analysed, the number of these observed in the model and the number defined in the Chemical Component Dictionary. Similar counts are reported in the Torsion and Rings columns. '-' means no outliers of that kind were identified.

Mol	Type	Chain	Res	Link	Chirals	Torsions	Rings
4	GTP	C	600	5	-	8/18/38/38	0/3/3/3
6	GDP	D	501	-	-	6/12/32/32	0/3/3/3
6	GDP	B	501	-	-	6/12/32/32	0/3/3/3
4	GTP	A	600	5	-	8/18/38/38	0/3/3/3
7	UIY	D	502	-	-	1/12/26/26	0/4/4/4
7	UIY	B	502	-	-	0/12/26/26	0/4/4/4

All (10) bond length outliers are listed below:

Mol	Chain	Res	Type	Atoms	Z	Observed(Å)	Ideal(Å)
7	B	502	UIY	CAA-NAE	8.32	1.44	1.38
7	D	502	UIY	CAA-NAE	5.20	1.42	1.38
7	B	502	UIY	CAQ-NAP	3.70	1.41	1.36
7	D	502	UIY	CAO-NAP	3.01	1.39	1.35
7	D	502	UIY	CAQ-NAP	2.70	1.40	1.36
4	A	600	GTP	C8-N7	-2.40	1.30	1.35
7	D	502	UIY	CAT-CAU	2.27	1.43	1.39
4	A	600	GTP	C5-C4	-2.20	1.37	1.43
7	D	502	UIY	CAT-CAS	2.08	1.42	1.39
7	B	502	UIY	CAA-NAB	2.00	1.41	1.34

All (11) bond angle outliers are listed below:

Mol	Chain	Res	Type	Atoms	Z	Observed(°)	Ideal(°)
7	B	502	UIY	OAF-CAA-NAE	5.02	129.90	125.89
7	B	502	UIY	CAI-CAJ-CAM	-4.55	114.67	120.42
7	D	502	UIY	OAF-CAA-NAE	4.21	129.25	125.89
7	B	502	UIY	CAK-CAJ-CAM	3.63	125.00	120.42
7	B	502	UIY	CAC-CAD-NAE	-3.63	99.46	103.07
7	B	502	UIY	CAC-NAB-CAA	-3.12	110.39	113.60
7	D	502	UIY	CAY-CAX-CAS	2.51	124.10	121.25
7	D	502	UIY	OBA-CAZ-CAU	-2.35	103.28	110.80
7	B	502	UIY	CAT-CAS-CAX	-2.25	117.14	119.77
6	D	501	GDP	O3B-PB-O3A	2.20	112.02	104.64
4	A	600	GTP	O5'-PA-O1A	2.12	117.36	109.07

There are no chirality outliers.

All (29) torsion outliers are listed below:

Mol	Chain	Res	Type	Atoms
4	A	600	GTP	PB-O3B-PG-O2G

Continued on next page...

Continued from previous page...

Mol	Chain	Res	Type	Atoms
4	A	600	GTP	C5'-O5'-PA-O1A
4	C	600	GTP	C5'-O5'-PA-O1A
4	C	600	GTP	C5'-O5'-PA-O2A
6	B	501	GDP	C5'-O5'-PA-O1A
6	D	501	GDP	C5'-O5'-PA-O1A
7	D	502	UIY	CAU-CAZ-OBA-CBB
4	A	600	GTP	C5'-O5'-PA-O2A
6	B	501	GDP	C5'-O5'-PA-O2A
6	D	501	GDP	C5'-O5'-PA-O2A
4	A	600	GTP	PB-O3A-PA-O2A
4	C	600	GTP	PB-O3A-PA-O2A
6	B	501	GDP	PB-O3A-PA-O2A
6	D	501	GDP	PB-O3A-PA-O2A
4	C	600	GTP	PB-O3B-PG-O1G
4	A	600	GTP	C3'-C4'-C5'-O5'
4	C	600	GTP	PB-O3B-PG-O2G
4	C	600	GTP	PB-O3B-PG-O3G
4	A	600	GTP	C5'-O5'-PA-O3A
4	C	600	GTP	C5'-O5'-PA-O3A
6	B	501	GDP	C5'-O5'-PA-O3A
6	D	501	GDP	C5'-O5'-PA-O3A
4	A	600	GTP	O4'-C4'-C5'-O5'
4	C	600	GTP	PB-O3A-PA-O1A
6	B	501	GDP	PB-O3A-PA-O1A
6	D	501	GDP	PB-O3A-PA-O1A
6	B	501	GDP	C4'-C5'-O5'-PA
6	D	501	GDP	C4'-C5'-O5'-PA
4	A	600	GTP	C4'-C5'-O5'-PA

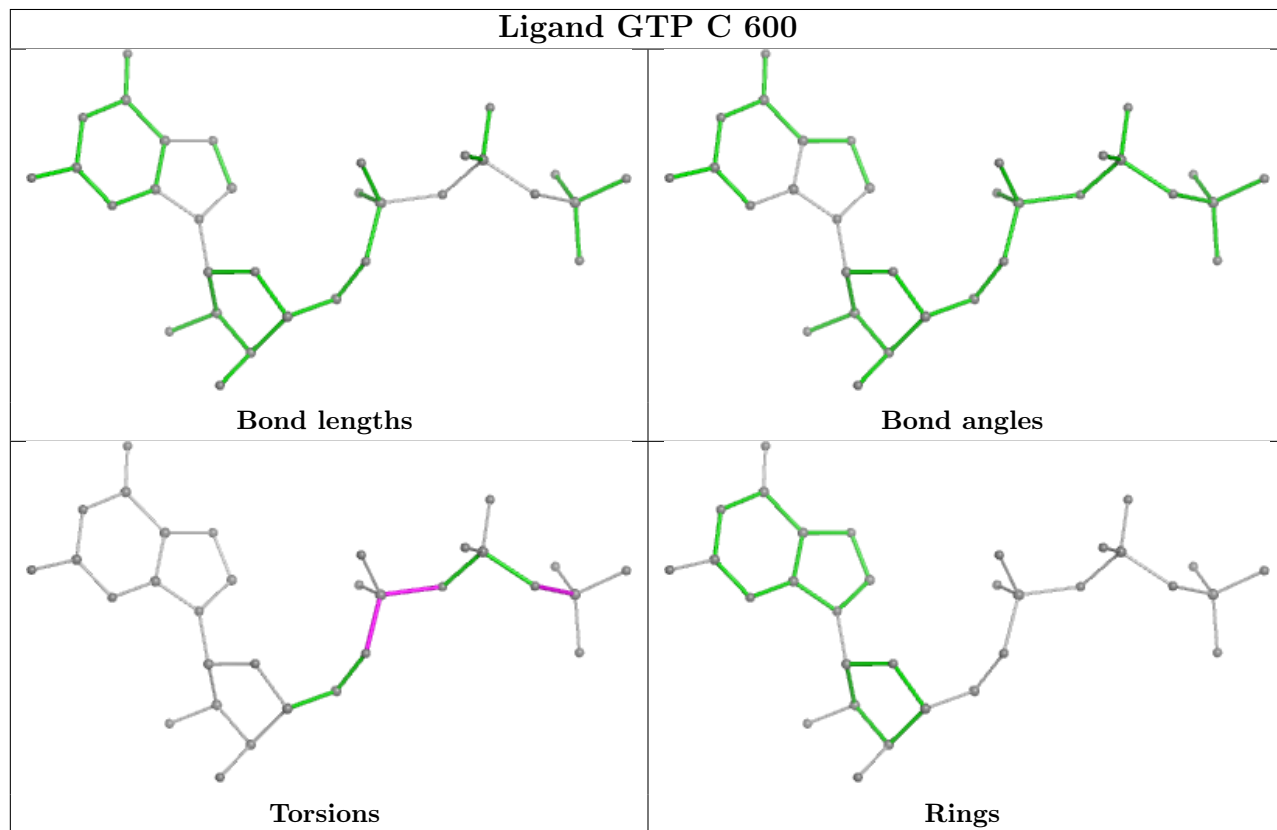
There are no ring outliers.

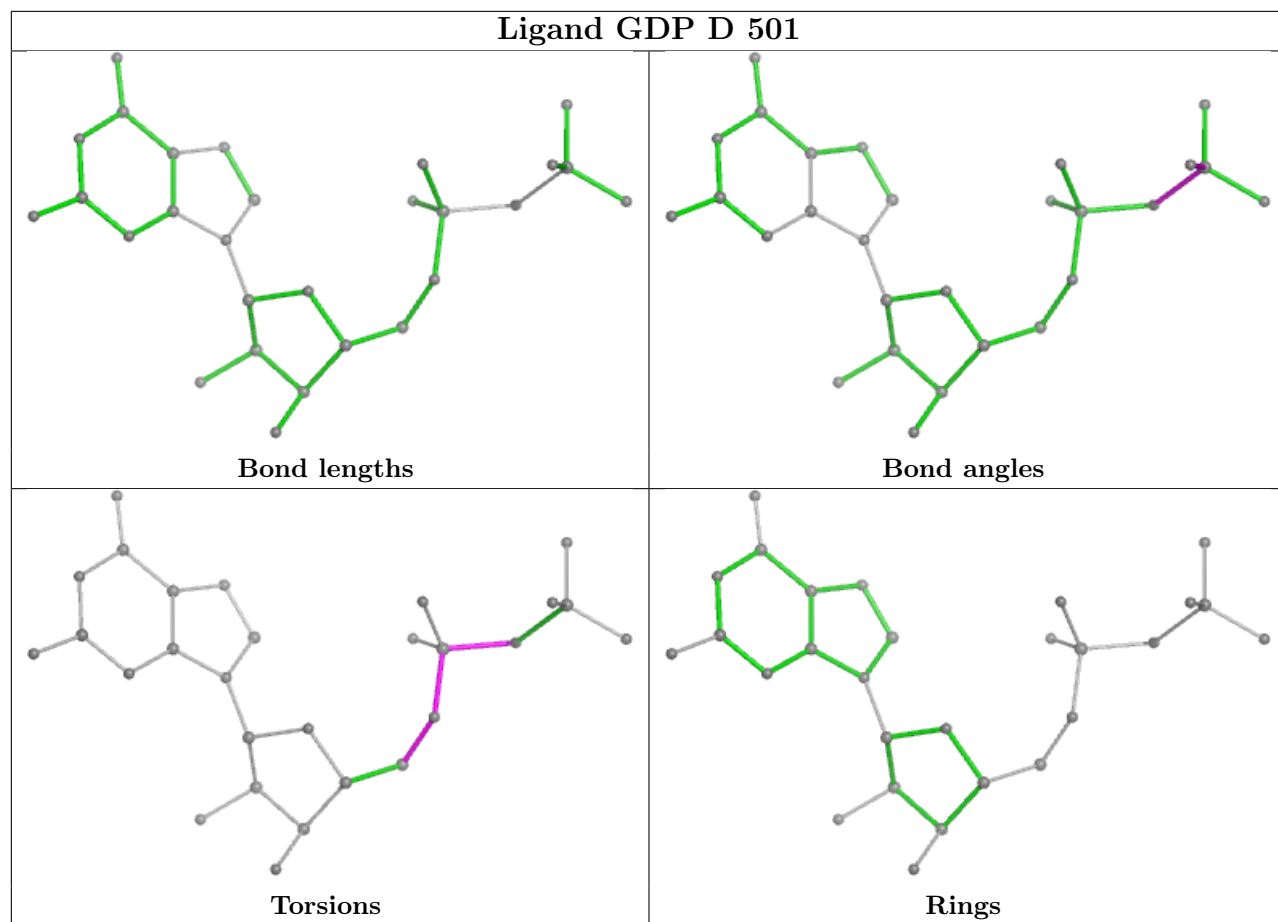
3 monomers are involved in 3 short contacts:

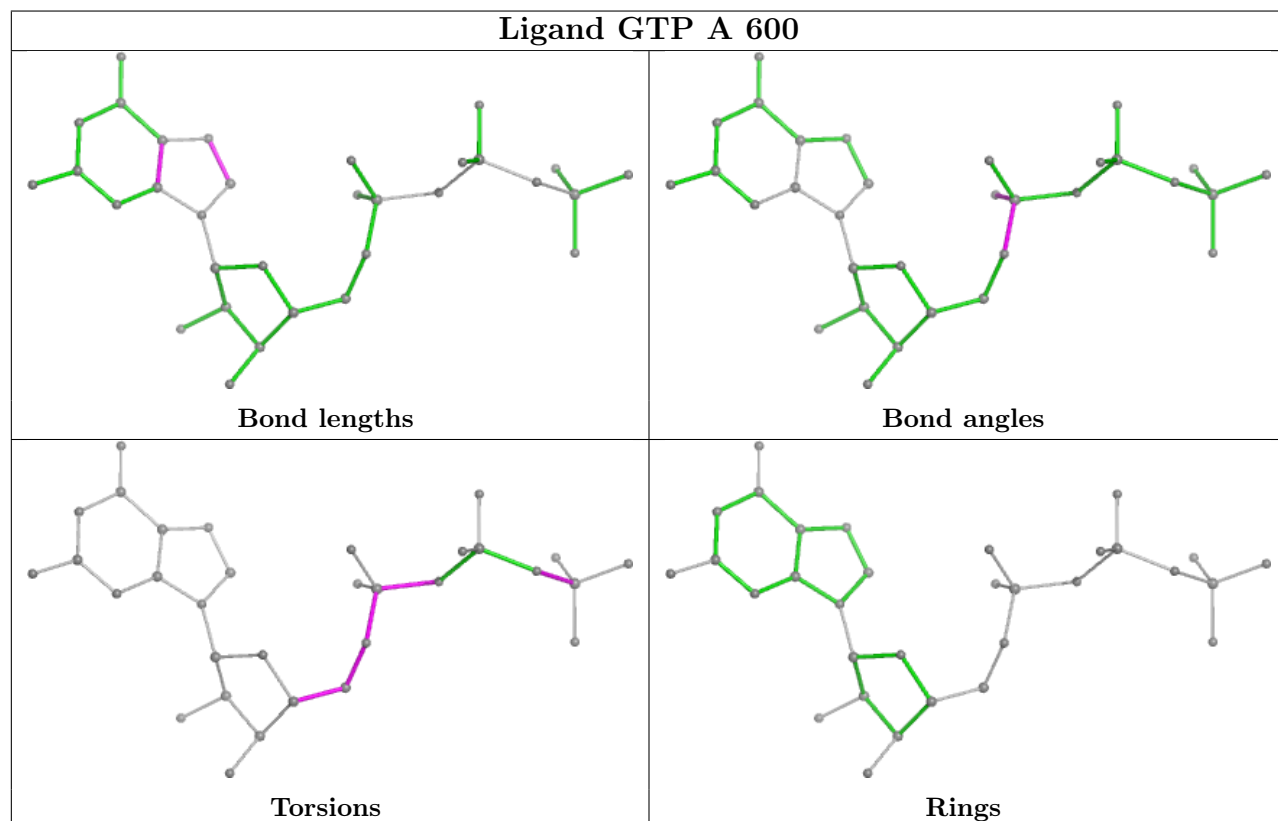
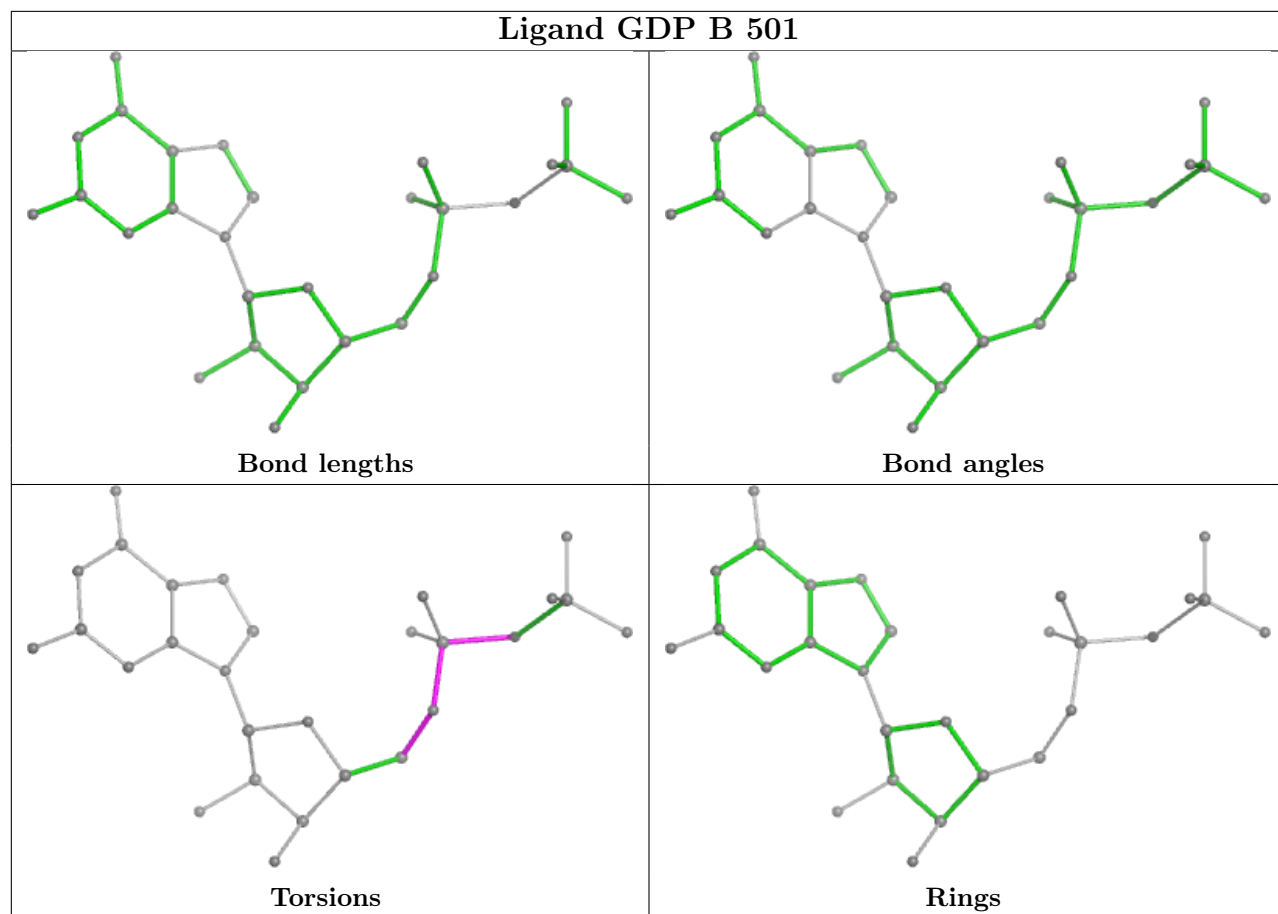
Mol	Chain	Res	Type	Clashes	Symm-Clashes
8	D	503	SO4	1	0
7	D	502	UIY	1	0
7	B	502	UIY	1	0

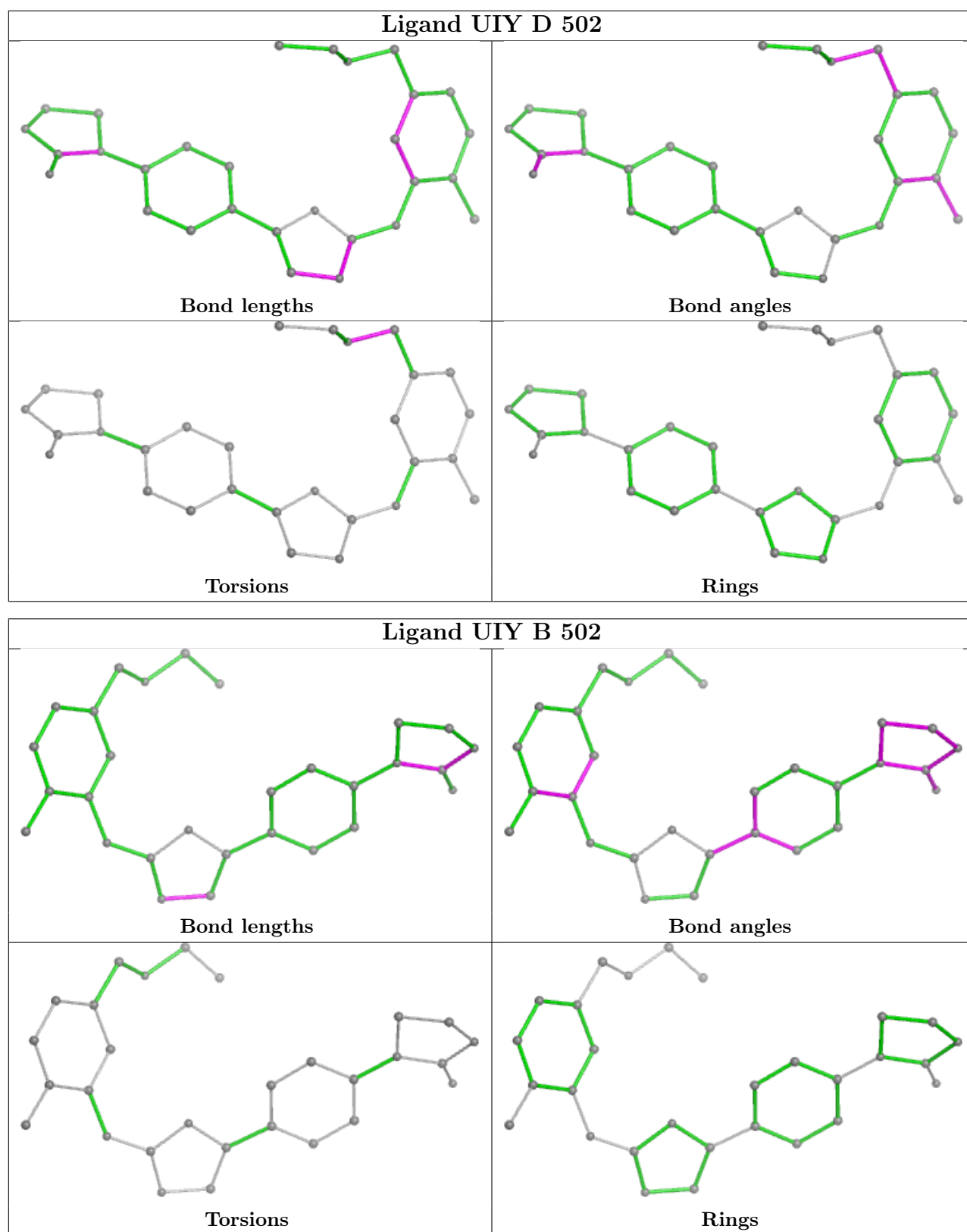
The following is a two-dimensional graphical depiction of Mogul quality analysis of bond lengths, bond angles, torsion angles, and ring geometry for all instances of the Ligand of Interest. In addition, ligands with molecular weight > 250 and outliers as shown on the validation Tables will also be included. For torsion angles, if less than 5% of the Mogul distribution of torsion angles is within 10 degrees of the torsion angle in question, then that torsion angle is considered an outlier.

Any bond that is central to one or more torsion angles identified as an outlier by Mogul will be highlighted in the graph. For rings, the root-mean-square deviation (RMSD) between the ring in question and similar rings identified by Mogul is calculated over all ring torsion angles. If the average RMSD is greater than 60 degrees and the minimal RMSD between the ring in question and any Mogul-identified rings is also greater than 60 degrees, then that ring is considered an outlier. The outliers are highlighted in purple. The color gray indicates Mogul did not find sufficient equivalents in the CSD to analyse the geometry.









5.7 Other polymers [\(i\)](#)

There are no such residues in this entry.

5.8 Polymer linkage issues

There are no chain breaks in this entry.

6 Fit of model and data

6.1 Protein, DNA and RNA chains

In the following table, the column labelled ‘#RSRZ > 2’ contains the number (and percentage) of RSRZ outliers, followed by percent RSRZ outliers for the chain as percentile scores relative to all X-ray entries and entries of similar resolution. The OWAB column contains the minimum, median, 95th percentile and maximum values of the occupancy-weighted average B-factor per residue. The column labelled ‘Q < 0.9’ lists the number of (and percentage) of residues with an average occupancy less than 0.9.

Mol	Chain	Analysed	<RSRZ>	#RSRZ>2	OWAB(Å ²)	Q<0.9
1	A	427/451 (94%)	0.46	31 (7%) 22 22	68, 105, 149, 167	0
1	C	431/451 (95%)	0.33	15 (3%) 47 46	52, 92, 136, 155	0
2	B	430/445 (96%)	0.20	10 (2%) 61 59	59, 86, 126, 143	0
2	D	431/445 (96%)	0.08	1 (0%) 92 90	49, 75, 116, 131	0
3	E	116/143 (81%)	0.61	2 (1%) 69 66	102, 123, 162, 169	0
All	All	1835/1935 (94%)	0.29	59 (3%) 50 49	49, 92, 138, 169	0

All (59) RSRZ outliers are listed below:

Mol	Chain	Res	Type	RSRZ
1	A	316	CYS	5.6
1	C	68	VAL	4.3
1	C	37	PRO	4.0
1	A	376	CYS	3.5
1	A	318	LEU	3.5
1	C	315	CYS	3.4
2	B	295	MET	3.4
1	A	234	ILE	3.4
2	B	181	VAL	3.3
2	D	172	MET	3.3
1	A	57	GLY	3.3
3	E	50	ILE	3.3
1	A	378	LEU	3.3
1	A	319	TYR	3.3
1	C	313	MET	3.1
1	C	65	ALA	3.1
3	E	54	LEU	3.0
1	A	328	VAL	3.0
1	A	313	MET	2.8
1	C	122	ILE	2.8

Continued on next page...

Continued from previous page...

Mol	Chain	Res	Type	RSRZ
1	A	351	PHE	2.8
2	B	400	ARG	2.7
1	C	302	MET	2.7
1	A	122	ILE	2.7
1	C	350	GLY	2.7
1	A	283	HIS	2.7
1	C	7	ILE	2.6
1	A	315	CYS	2.6
1	C	135	PHE	2.6
2	B	296	PHE	2.6
1	A	259	LEU	2.5
1	A	332	ILE	2.5
1	A	337	THR	2.5
1	A	437	VAL	2.4
1	A	302	MET	2.4
2	B	126	SER	2.4
1	C	169	PHE	2.4
2	B	241	CYS	2.4
1	A	323	VAL	2.4
2	B	177	VAL	2.3
1	A	317	LEU	2.3
2	B	291	LEU	2.3
1	A	46	ASP	2.3
1	C	346	TRP	2.3
1	A	341	ILE	2.2
1	C	281	ALA	2.2
1	C	136	LEU	2.2
2	B	213	CYS	2.1
1	A	308	ARG	2.1
1	A	203	MET	2.1
1	A	227	LEU	2.1
1	A	56	THR	2.1
1	A	58	ALA	2.1
1	A	307	PRO	2.0
2	B	435	TYR	2.0
1	A	4	CYS	2.0
1	A	335	ILE	2.0
1	A	38	SER	2.0
1	C	16	ILE	2.0

6.2 Non-standard residues in protein, DNA, RNA chains [i](#)

There are no non-standard protein/DNA/RNA residues in this entry.

6.3 Carbohydrates [i](#)

There are no monosaccharides in this entry.

6.4 Ligands [i](#)

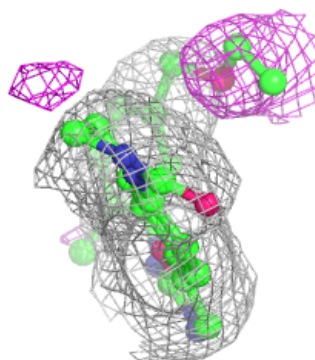
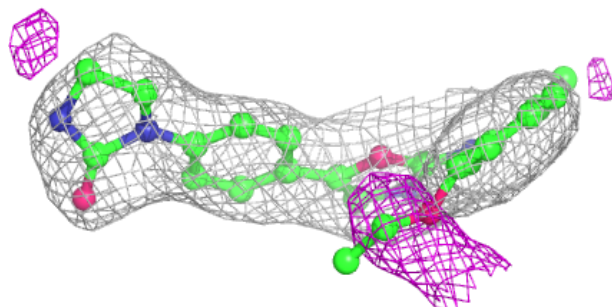
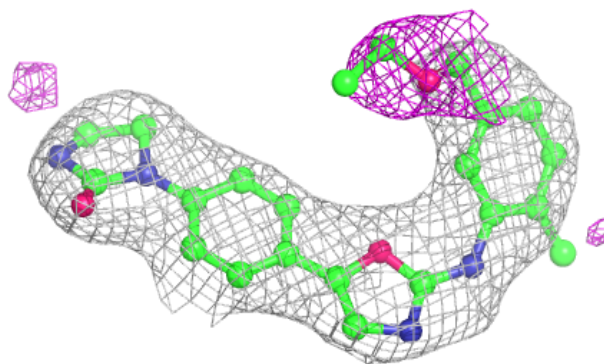
In the following table, the Atoms column lists the number of modelled atoms in the group and the number defined in the chemical component dictionary. The B-factors column lists the minimum, median, 95th percentile and maximum values of B factors of atoms in the group. The column labelled 'Q< 0.9' lists the number of atoms with occupancy less than 0.9.

Mol	Type	Chain	Res	Atoms	RSCC	RSR	B-factors(\AA^2)	Q<0.9
8	SO4	B	503	5/5	0.70	0.08	142,142,142,142	0
8	SO4	B	504	5/5	0.74	0.08	175,175,175,175	0
8	SO4	D	503	5/5	0.88	0.10	148,148,148,149	0
7	UIY	B	502	29/29	0.94	0.11	72,73,81,81	0
7	UIY	D	502	29/29	0.95	0.09	59,60,63,64	0
6	GDP	B	501	28/28	0.95	0.07	76,78,81,81	0
6	GDP	D	501	28/28	0.96	0.07	56,63,70,71	0
5	MG	C	601	1/1	0.96	0.10	59,59,59,59	0
4	GTP	A	600	32/32	0.97	0.07	68,71,73,73	0
4	GTP	C	600	32/32	0.97	0.07	65,67,68,69	0
5	MG	A	601	1/1	0.99	0.07	73,73,73,73	0

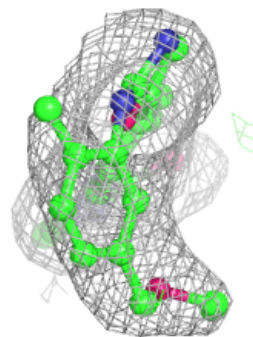
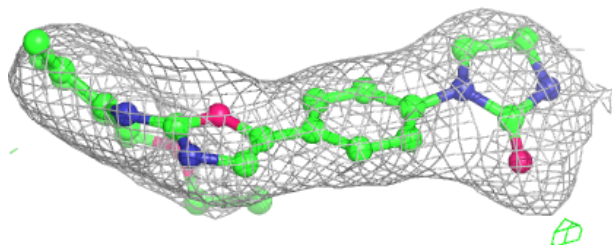
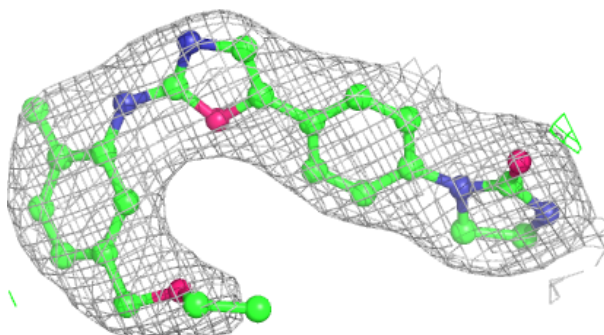
The following is a graphical depiction of the model fit to experimental electron density of all instances of the Ligand of Interest. In addition, ligands with molecular weight > 250 and outliers as shown on the geometry validation Tables will also be included. Each fit is shown from different orientation to approximate a three-dimensional view.

Electron density around UIY B 502:

$2mF_o-DF_c$ (at 0.7 rmsd) in gray
 mF_o-DF_c (at 3 rmsd) in purple (negative)
and green (positive)

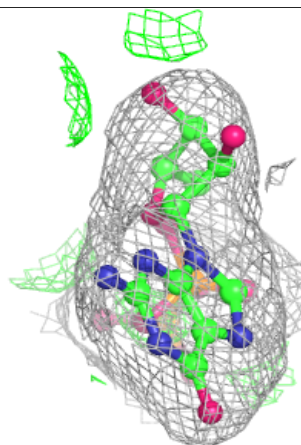
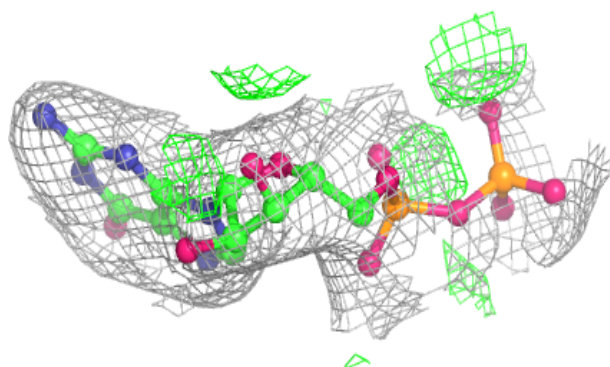
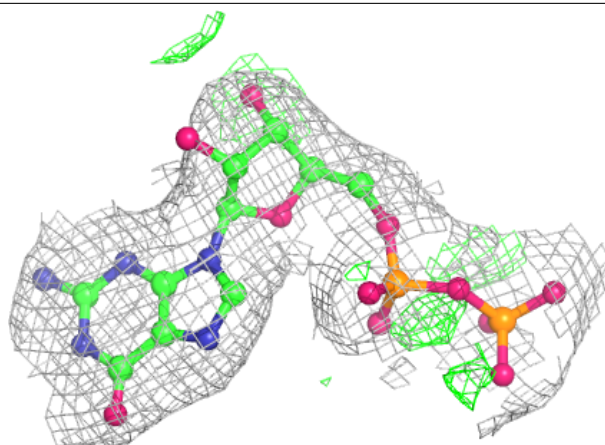
**Electron density around UIY D 502:**

$2mF_o-DF_c$ (at 0.7 rmsd) in gray
 mF_o-DF_c (at 3 rmsd) in purple (negative)
and green (positive)

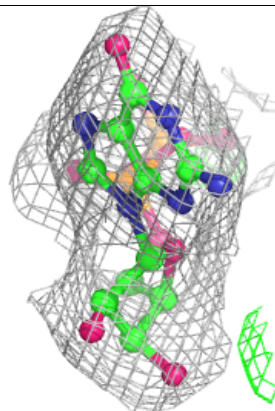
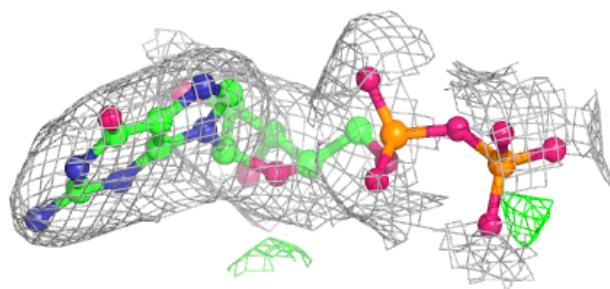
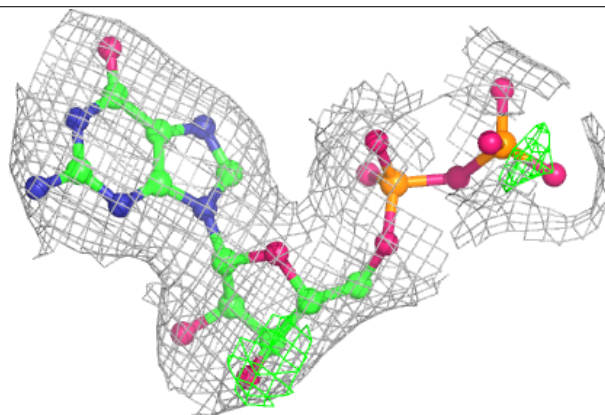


Electron density around GDP B 501:

$2mF_o-DF_c$ (at 0.7 rmsd) in gray
 mF_o-DF_c (at 3 rmsd) in purple (negative)
and green (positive)

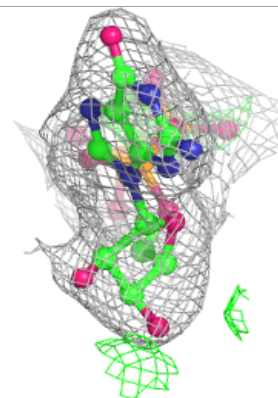
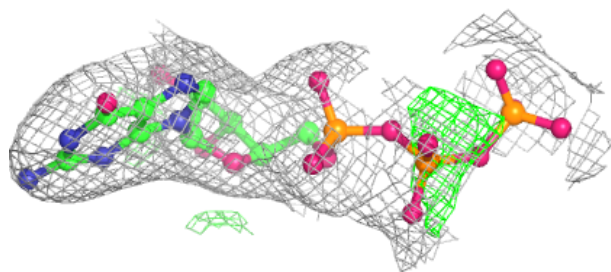
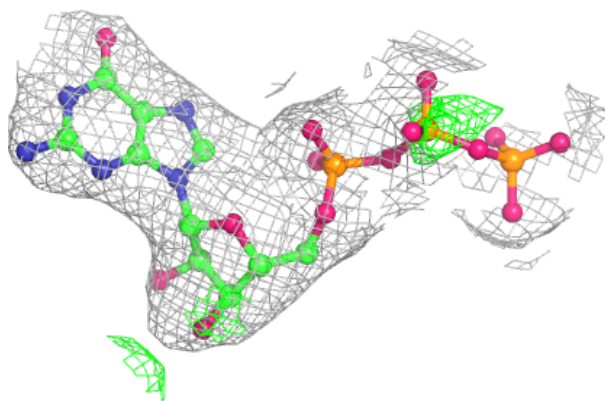
**Electron density around GDP D 501:**

$2mF_o-DF_c$ (at 0.7 rmsd) in gray
 mF_o-DF_c (at 3 rmsd) in purple (negative)
and green (positive)

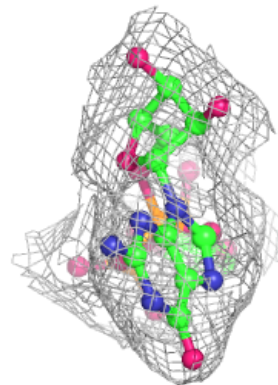
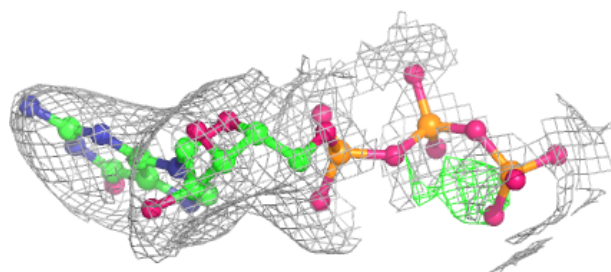
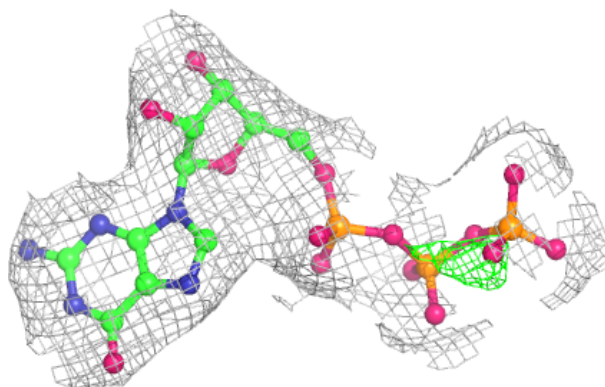


Electron density around GTP A 600:

$2mF_o-DF_c$ (at 0.7 rmsd) in gray
 mF_o-DF_c (at 3 rmsd) in purple (negative)
and green (positive)

**Electron density around GTP C 600:**

$2mF_o-DF_c$ (at 0.7 rmsd) in gray
 mF_o-DF_c (at 3 rmsd) in purple (negative)
and green (positive)



6.5 Other polymers [i](#)

There are no such residues in this entry.