



Full wwPDB X-ray Structure Validation Report ⓘ

Dec 6, 2023 – 04:58 am GMT

PDB ID : 2CH1
Title : Structure of Anopheles gambiae 3-hydroxykynurenine transaminase
Authors : Rossi, F.; Garavaglia, S.; Giovenzana, G.B.; Arca, B.; Li, J.; Rizzi, M.
Deposited on : 2006-03-10
Resolution : 2.40 Å(reported)

This is a Full wwPDB X-ray Structure Validation Report for a publicly released PDB entry.

We welcome your comments at validation@mail.wwpdb.org

A user guide is available at

<https://www.wwpdb.org/validation/2017/XrayValidationReportHelp>

with specific help available everywhere you see the ⓘ symbol.

The types of validation reports are described at

<http://www.wwpdb.org/validation/2017/FAQs#types>.

The following versions of software and data (see [references ⓘ](#)) were used in the production of this report:

MolProbity : 4.02b-467
Mogul : 1.8.4, CSD as541be (2020)
Xtrriage (Phenix) : **NOT EXECUTED**
EDS : **NOT EXECUTED**
Percentile statistics : 20191225.v01 (using entries in the PDB archive December 25th 2019)
Ideal geometry (proteins) : Engh & Huber (2001)
Ideal geometry (DNA, RNA) : Parkinson et al. (1996)
Validation Pipeline (wwPDB-VP) : 2.36

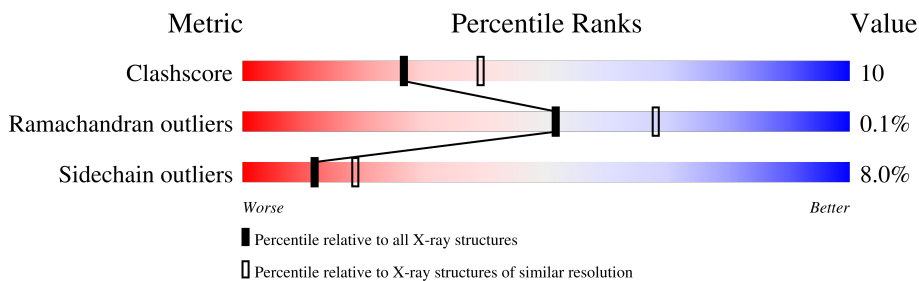
1 Overall quality at a glance

The following experimental techniques were used to determine the structure:

X-RAY DIFFRACTION

The reported resolution of this entry is 2.40 Å.

Percentile scores (ranging between 0-100) for global validation metrics of the entry are shown in the following graphic. The table shows the number of entries on which the scores are based.



Metric	Whole archive (#Entries)	Similar resolution (#Entries, resolution range(Å))
Clashscore	141614	4398 (2.40-2.40)
Ramachandran outliers	138981	4318 (2.40-2.40)
Sidechain outliers	138945	4319 (2.40-2.40)

The table below summarises the geometric issues observed across the polymeric chains and their fit to the electron density. The red, orange, yellow and green segments of the lower bar indicate the fraction of residues that contain outliers for ≥ 3 , 2, 1 and 0 types of geometric quality criteria respectively. A grey segment represents the fraction of residues that are not modelled. The numeric value for each fraction is indicated below the corresponding segment, with a dot representing fractions $\leq 5\%$.

Note EDS was not executed.

Mol	Chain	Length	Quality of chain
1	A	396	76% (green), 19% (yellow), 5% (orange), 0% (red), 0% (grey)
1	B	396	75% (green), 19% (yellow), 6% (orange), 0% (red), 0% (grey)
1	C	396	76% (green), 18% (yellow), 6% (orange), 0% (red), 0% (grey)
1	D	396	77% (green), 18% (yellow), 5% (orange), 0% (red), 0% (grey)

2 Entry composition [i](#)

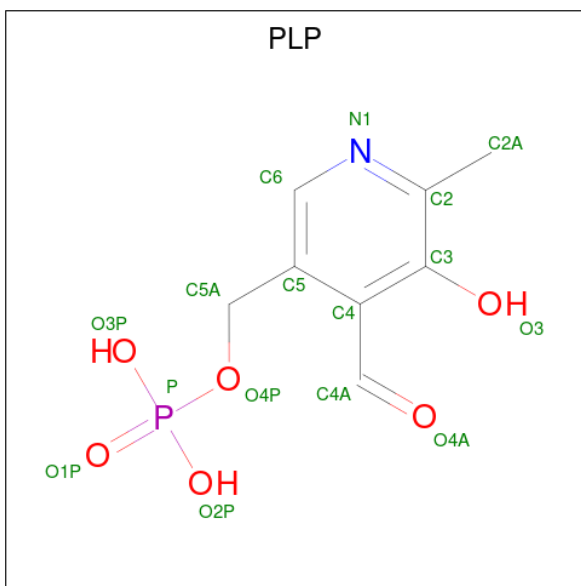
There are 4 unique types of molecules in this entry. The entry contains 12607 atoms, of which 0 are hydrogens and 0 are deuteriums.

In the tables below, the ZeroOcc column contains the number of atoms modelled with zero occupancy, the AltConf column contains the number of residues with at least one atom in alternate conformation and the Trace column contains the number of residues modelled with at most 2 atoms.

- Molecule 1 is a protein called 3-HYDROXYKYNURENINE TRANSAMINASE.

Mol	Chain	Residues	Atoms					ZeroOcc	AltConf	Trace
			Total	C	N	O	S			
1	A	388	Total 3046	C 1949	N 524	O 551	S 22	0	0	0
1	B	388	Total 3046	C 1949	N 524	O 551	S 22	0	0	0
1	C	388	Total 3046	C 1949	N 524	O 551	S 22	4	0	0
1	D	388	Total 3037	C 1943	N 523	O 549	S 22	6	0	0

- Molecule 2 is PYRIDOXAL-5'-PHOSPHATE (three-letter code: PLP) (formula: C₈H₁₀NO₆P).



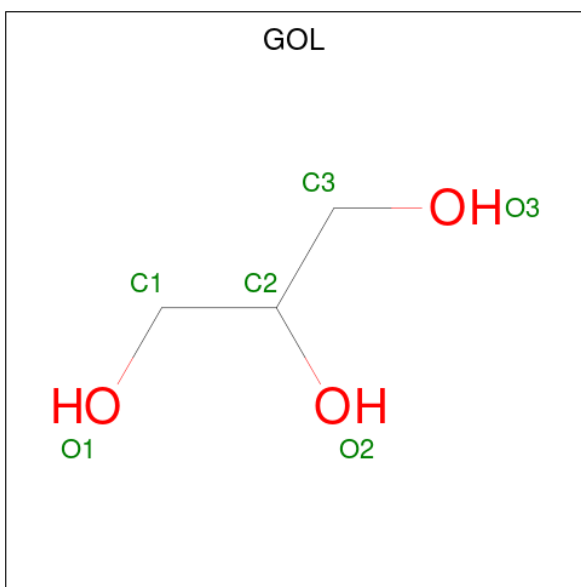
Mol	Chain	Residues	Atoms					ZeroOcc	AltConf
			Total	C	N	O	P		
2	A	1	Total 15	C 8	N 1	O 5	P 1	0	0
2	B	1	Total 15	C 8	N 1	O 5	P 1	0	0

Continued on next page...

Continued from previous page...

Mol	Chain	Residues	Atoms					ZeroOcc	AltConf
2	C	1	Total	C	N	O	P	0	0
			15	8	1	5	1		
2	D	1	Total	C	N	O	P	0	0
			15	8	1	5	1		

- Molecule 3 is GLYCEROL (three-letter code: GOL) (formula: C₃H₈O₃).



Mol	Chain	Residues	Atoms			ZeroOcc	AltConf
3	A	1	Total	C	O	0	0
			6	3	3		
3	B	1	Total	C	O	0	0
			6	3	3		
3	C	1	Total	C	O	0	0
			6	3	3		
3	D	1	Total	C	O	0	0
			6	3	3		

- Molecule 4 is water.

Mol	Chain	Residues	Atoms		ZeroOcc	AltConf
4	A	111	Total	O	0	0
			111	111		
4	B	104	Total	O	0	0
			104	104		
4	C	75	Total	O	0	0
			75	75		

Continued on next page...

Continued from previous page...

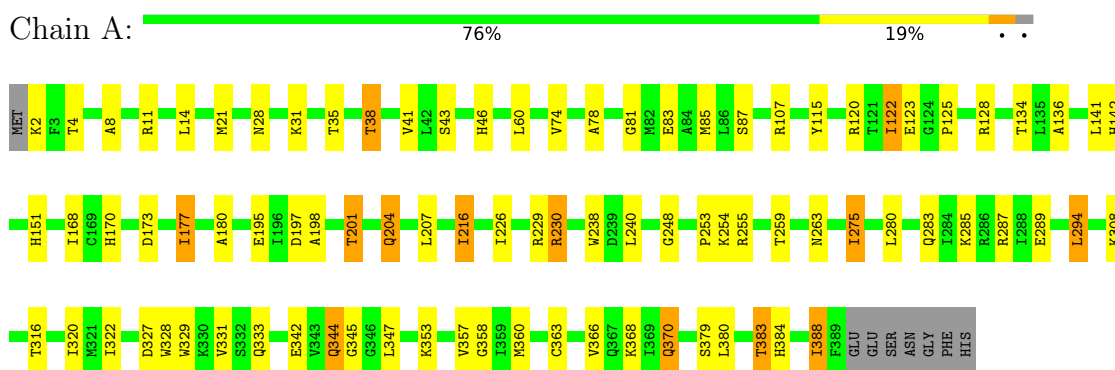
Mol	Chain	Residues	Atoms		ZeroOcc	AltConf
4	D	58	Total	O	0	0
			58	58		

3 Residue-property plots

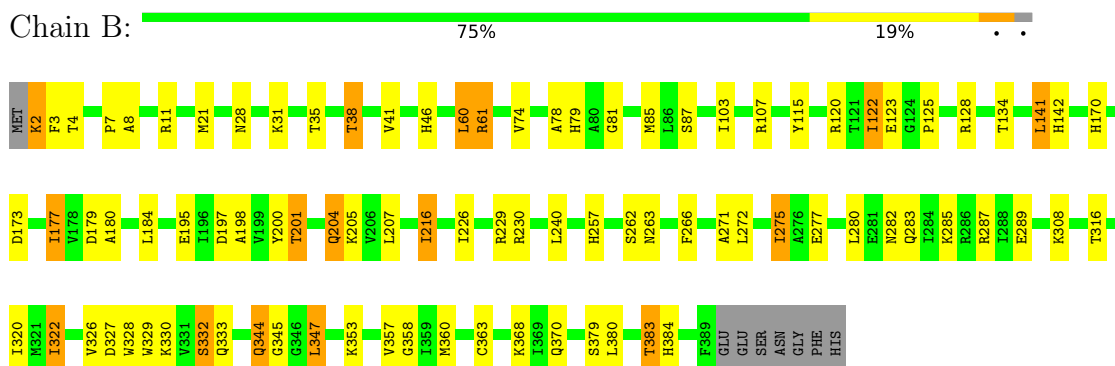
These plots are drawn for all protein, RNA, DNA and oligosaccharide chains in the entry. The first graphic for a chain summarises the proportions of the various outlier classes displayed in the second graphic. The second graphic shows the sequence view annotated by issues in geometry. Residues are color-coded according to the number of geometric quality criteria for which they contain at least one outlier: green = 0, yellow = 1, orange = 2 and red = 3 or more. Stretches of 2 or more consecutive residues without any outlier are shown as a green connector. Residues present in the sample, but not in the model, are shown in grey.

Note EDS was not executed.

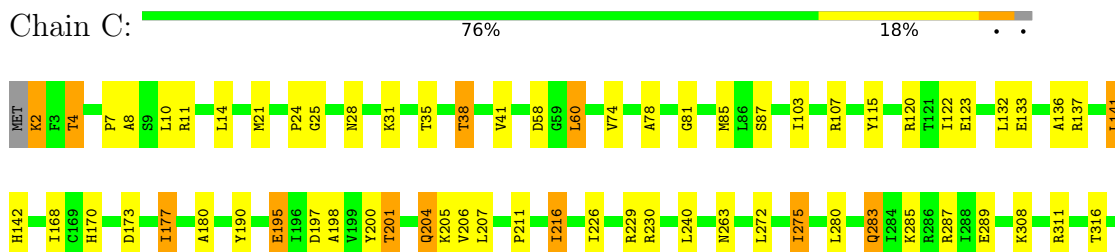
- Molecule 1: 3-HYDROXYKYNURENINE TRANSAMINASE

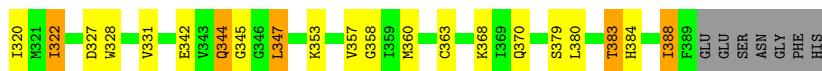


- Molecule 1: 3-HYDROXYKYNURENINE TRANSAMINASE



- Molecule 1: 3-HYDROXYKYNURENINE TRANSAMINASE





● Molecule 1: 3-HYDROXYKYNURENINE TRANSAMINASE

Chain D: 77% 18%



4 Data and refinement statistics

Xtrriage (Phenix) and EDS were not executed - this section is therefore incomplete.

Property	Value	Source
Space group	P 1 21 1	Depositor
Cell constants a, b, c, α , β , γ	87.43Å 84.17Å 118.79Å 90.00° 99.86° 90.00°	Depositor
Resolution (Å)	50.00 – 2.40	Depositor
% Data completeness (in resolution range)	100.0 (50.00-2.40)	Depositor
R_{merge}	0.06	Depositor
R_{sym}	(Not available)	Depositor
Refinement program	REFMAC 5.2.0005	Depositor
R, R_{free}	0.213 , 0.246	Depositor
Estimated twinning fraction	No twinning to report.	Xtrriage
Total number of atoms	12607	wwPDB-VP
Average B, all atoms (Å ²)	40.0	wwPDB-VP

5 Model quality [i](#)

5.1 Standard geometry [i](#)

Bond lengths and bond angles in the following residue types are not validated in this section: PLP, GOL

The Z score for a bond length (or angle) is the number of standard deviations the observed value is removed from the expected value. A bond length (or angle) with $|Z| > 5$ is considered an outlier worth inspection. RMSZ is the root-mean-square of all Z scores of the bond lengths (or angles).

Mol	Chain	Bond lengths		Bond angles	
		RMSZ	# Z >5	RMSZ	# Z >5
1	A	0.68	0/3120	0.71	1/4229 (0.0%)
1	B	0.71	1/3120 (0.0%)	0.73	2/4229 (0.0%)
1	C	0.71	1/3120 (0.0%)	0.75	2/4229 (0.0%)
1	D	0.84	2/3111 (0.1%)	0.73	2/4218 (0.0%)
All	All	0.74	4/12471 (0.0%)	0.73	7/16905 (0.0%)

All (4) bond length outliers are listed below:

Mol	Chain	Res	Type	Atoms	Z	Observed(Å)	Ideal(Å)
1	D	384	HIS	CA-CB	22.64	2.03	1.53
1	D	379	SER	CB-OG	8.83	1.53	1.42
1	C	195	GLU	CG-CD	5.80	1.60	1.51
1	B	332	SER	CB-OG	-5.07	1.35	1.42

All (7) bond angle outliers are listed below:

Mol	Chain	Res	Type	Atoms	Z	Observed(°)	Ideal(°)
1	C	388	ILE	CA-CB-CG2	11.64	134.17	110.90
1	B	61	ARG	NE-CZ-NH2	-6.63	116.98	120.30
1	D	61	ARG	NE-CZ-NH2	-6.33	117.14	120.30
1	C	388	ILE	N-CA-CB	6.16	124.97	110.80
1	D	384	HIS	N-CA-CB	6.00	121.41	110.60
1	B	332	SER	CB-CA-C	5.94	121.39	110.10
1	A	294	LEU	CB-CG-CD2	5.72	120.73	111.00

There are no chirality outliers.

There are no planarity outliers.

5.2 Too-close contacts [i](#)

In the following table, the Non-H and H(model) columns list the number of non-hydrogen atoms and hydrogen atoms in the chain respectively. The H(added) column lists the number of hydrogen atoms added and optimized by MolProbity. The Clashes column lists the number of clashes within the asymmetric unit, whereas Symm-Clashes lists symmetry-related clashes.

Mol	Chain	Non-H	H(model)	H(added)	Clashes	Symm-Clashes
1	A	3046	0	3050	75	0
1	B	3046	0	3050	79	0
1	C	3046	0	3050	64	0
1	D	3037	0	3034	54	0
2	A	15	0	6	3	0
2	B	15	0	6	2	0
2	C	15	0	6	1	0
2	D	15	0	6	4	0
3	A	6	0	8	2	0
3	B	6	0	8	0	0
3	C	6	0	8	0	0
3	D	6	0	8	3	0
4	A	111	0	0	3	0
4	B	104	0	0	4	0
4	C	75	0	0	5	0
4	D	58	0	0	3	0
All	All	12607	0	12240	251	0

The all-atom clashscore is defined as the number of clashes found per 1000 atoms (including hydrogen atoms). The all-atom clashscore for this structure is 10.

All (251) close contacts within the same asymmetric unit are listed below, sorted by their clash magnitude.

Atom-1	Atom-2	Interatomic distance (Å)	Clash overlap (Å)
1:A:253:PRO:CB	1:B:2:LYS:O	1.84	1.24
1:C:383:THR:HG23	1:C:384:HIS:CD2	1.76	1.19
1:A:383:THR:HG23	1:A:384:HIS:CD2	1.79	1.15
1:A:254:LYS:O	1:B:2:LYS:HG2	1.47	1.14
1:B:383:THR:HG23	1:B:384:HIS:CD2	1.82	1.13
1:A:383:THR:HG23	1:A:384:HIS:HD2	1.12	1.12
1:C:383:THR:CG2	1:C:384:HIS:HD2	1.62	1.11
1:A:253:PRO:HB2	1:B:2:LYS:O	1.51	1.10
1:B:383:THR:CG2	1:B:384:HIS:HD2	1.66	1.06
1:A:383:THR:CG2	1:A:384:HIS:HD2	1.73	0.99
1:B:383:THR:HG23	1:B:384:HIS:HD2	1.20	0.94

Continued on next page...

Continued from previous page...

Atom-1	Atom-2	Interatomic distance (Å)	Clash overlap (Å)
1:A:230:ARG:HH21	1:C:311:ARG:HH22	1.12	0.94
1:A:253:PRO:HB3	1:B:2:LYS:O	1.65	0.93
1:B:322:ILE:HD12	1:B:328:TRP:HB3	1.56	0.87
1:D:322:ILE:HD12	1:D:328:TRP:HB3	1.59	0.84
1:B:204:GLN:H	1:B:204:GLN:HE21	1.22	0.83
1:A:21:MET:H	1:A:28:ASN:HD21	1.26	0.83
1:A:204:GLN:HE21	1:A:204:GLN:H	1.23	0.83
1:C:204:GLN:H	1:C:204:GLN:HE21	1.25	0.82
1:B:327:ASP:H	1:B:384:HIS:CE1	1.97	0.82
1:D:204:GLN:H	1:D:204:GLN:HE21	1.25	0.81
1:D:21:MET:H	1:D:28:ASN:HD21	1.29	0.80
1:B:11:ARG:NH1	1:D:327:ASP:HA	1.97	0.80
1:C:322:ILE:HD12	1:C:328:TRP:HB3	1.63	0.79
1:A:120:ARG:HH11	1:A:142:HIS:HD2	1.32	0.77
1:C:21:MET:H	1:C:28:ASN:HD21	1.31	0.77
1:A:322:ILE:HD12	1:A:328:TRP:HB3	1.68	0.76
1:A:35:THR:O	1:A:38:THR:HB	1.86	0.76
1:B:327:ASP:H	1:B:384:HIS:HE1	1.33	0.75
1:B:204:GLN:H	1:B:204:GLN:NE2	1.86	0.74
1:C:283:GLN:NE2	1:C:287:ARG:HH12	1.86	0.74
1:C:383:THR:CG2	1:C:384:HIS:CD2	2.48	0.73
1:A:21:MET:H	1:A:28:ASN:ND2	1.87	0.72
1:D:204:GLN:H	1:D:204:GLN:NE2	1.88	0.71
1:B:120:ARG:HH11	1:B:142:HIS:HD2	1.37	0.71
1:C:21:MET:H	1:C:28:ASN:ND2	1.89	0.71
1:A:275:ILE:HD11	1:A:280:LEU:HD23	1.73	0.71
1:B:21:MET:H	1:B:28:ASN:HD21	1.39	0.71
1:A:388:ILE:HG13	1:A:388:ILE:O	1.90	0.70
1:C:120:ARG:HH11	1:C:142:HIS:HD2	1.39	0.70
1:A:230:ARG:HH21	1:C:311:ARG:NH2	1.86	0.70
1:B:275:ILE:HD11	1:B:280:LEU:HD23	1.71	0.70
1:A:170:HIS:HD2	1:A:195:GLU:OE1	1.75	0.69
1:A:283:GLN:NE2	1:A:287:ARG:HH12	1.89	0.69
1:B:383:THR:CG2	1:B:384:HIS:CD2	2.52	0.69
1:A:283:GLN:HE21	1:A:287:ARG:HH12	1.41	0.69
1:B:35:THR:O	1:B:38:THR:HB	1.92	0.69
1:D:120:ARG:HH11	1:D:142:HIS:HD2	1.41	0.69
1:C:327:ASP:H	1:C:384:HIS:CE1	2.10	0.69
1:A:41:VAL:HG22	1:A:263:ASN:HD21	1.57	0.69
1:B:283:GLN:NE2	1:B:287:ARG:HH12	1.91	0.69
1:D:283:GLN:NE2	1:D:287:ARG:HH12	1.91	0.68

Continued on next page...

Continued from previous page...

Atom-1	Atom-2	Interatomic distance (Å)	Clash overlap (Å)
1:A:204:GLN:H	1:A:204:GLN:NE2	1.92	0.68
1:B:226:ILE:O	1:B:229:ARG:HG2	1.94	0.67
1:D:21:MET:H	1:D:28:ASN:ND2	1.91	0.67
1:D:277:GLU:OE1	4:D:2051:HOH:O	2.12	0.67
1:C:283:GLN:HE21	1:C:287:ARG:HH12	1.42	0.66
1:C:204:GLN:H	1:C:204:GLN:NE2	1.91	0.66
1:A:253:PRO:HB2	1:B:2:LYS:HG3	1.75	0.66
1:D:275:ILE:HD11	1:D:280:LEU:HD23	1.78	0.66
1:B:204:GLN:HE21	1:B:204:GLN:N	1.94	0.65
1:B:283:GLN:HE21	1:B:287:ARG:HH12	1.44	0.65
1:B:285:LYS:O	1:B:289:GLU:HG3	1.97	0.65
1:A:248:GLY:HA2	4:A:2076:HOH:O	1.98	0.64
1:C:41:VAL:HG22	1:C:263:ASN:HD21	1.63	0.64
1:B:383:THR:HG22	1:B:384:HIS:HD2	1.56	0.64
1:D:283:GLN:HE21	1:D:287:ARG:HH12	1.44	0.64
1:D:316:THR:O	1:D:358:GLY:HA2	1.97	0.64
1:D:379:SER:O	1:D:383:THR:HB	1.98	0.63
1:C:35:THR:O	1:C:38:THR:HB	2.00	0.62
1:A:285:LYS:O	1:A:289:GLU:HG3	2.01	0.61
1:C:204:GLN:HE21	1:C:204:GLN:N	1.97	0.61
1:A:180:ALA:O	1:A:201:THR:HG23	2.01	0.61
1:B:180:ALA:O	1:B:201:THR:HG23	2.01	0.61
1:D:35:THR:O	1:D:38:THR:HB	2.00	0.60
1:B:379:SER:O	1:B:383:THR:HB	2.01	0.60
1:D:204:GLN:HE21	1:D:204:GLN:N	1.97	0.60
1:A:253:PRO:HB2	1:B:2:LYS:C	2.20	0.60
1:C:383:THR:HG22	1:C:384:HIS:HD2	1.57	0.60
1:C:285:LYS:O	1:C:289:GLU:HG3	2.01	0.60
1:C:226:ILE:O	1:C:229:ARG:HG2	2.02	0.59
1:D:285:LYS:O	1:D:289:GLU:HG3	2.03	0.59
1:A:204:GLN:HE21	1:A:204:GLN:N	1.99	0.59
1:A:226:ILE:O	1:A:229:ARG:HG2	2.03	0.59
2:A:1390:PLP:C4A	3:A:1391:GOL:H11	2.33	0.58
1:B:170:HIS:HE1	1:B:197:ASP:OD2	1.87	0.58
1:B:329:TRP:CH2	1:B:333:GLN:HG3	2.39	0.58
1:C:322:ILE:HG12	1:C:353:LYS:O	2.04	0.58
1:C:316:THR:O	1:C:358:GLY:HA2	2.03	0.58
1:C:25:GLY:N	1:C:360:MET:HE1	2.18	0.57
1:B:78:ALA:HB3	2:B:1390:PLP:O4P	2.05	0.57
4:B:2021:HOH:O	1:C:4:THR:HG21	2.05	0.56
1:A:170:HIS:HE1	1:A:197:ASP:OD2	1.87	0.56

Continued on next page...

Continued from previous page...

Atom-1	Atom-2	Interatomic distance (Å)	Clash overlap (Å)
1:A:322:ILE:HG12	1:A:353:LYS:O	2.06	0.56
1:B:61:ARG:NH2	4:B:2017:HOH:O	2.38	0.56
1:B:322:ILE:HD12	1:B:328:TRP:CB	2.31	0.56
1:C:379:SER:O	1:C:383:THR:HB	2.06	0.56
1:D:322:ILE:HD12	1:D:328:TRP:CB	2.34	0.56
1:B:21:MET:H	1:B:28:ASN:ND2	2.02	0.56
1:A:379:SER:O	1:A:383:THR:HB	2.06	0.56
1:B:41:VAL:HG22	1:B:263:ASN:HD21	1.69	0.56
2:D:1390:PLP:C4A	3:D:1391:GOL:H11	2.36	0.56
1:A:327:ASP:H	1:A:384:HIS:CE1	2.24	0.56
1:A:383:THR:CG2	1:A:384:HIS:CD2	2.59	0.56
1:A:254:LYS:O	1:B:2:LYS:CG	2.39	0.55
2:D:1390:PLP:C4A	3:D:1391:GOL:C1	2.85	0.55
1:C:275:ILE:HD11	1:C:280:LEU:HD23	1.87	0.55
1:A:331:VAL:HG22	1:A:383:THR:HG21	1.88	0.55
1:C:322:ILE:HD12	1:C:328:TRP:CB	2.36	0.54
1:B:3:PHE:CE2	1:C:190:TYR:CE2	2.95	0.54
1:A:43:SER:H	1:A:46:HIS:CD2	2.26	0.53
1:A:107:ARG:NH1	1:D:257:HIS:O	2.42	0.53
1:C:2:LYS:N	4:C:2001:HOH:O	2.42	0.53
1:B:74:VAL:HG23	1:B:216:ILE:HD13	1.92	0.52
1:B:3:PHE:HE2	4:C:2041:HOH:O	1.92	0.52
1:A:253:PRO:CG	1:B:2:LYS:O	2.56	0.52
1:C:331:VAL:HG22	1:C:383:THR:HG21	1.92	0.52
1:D:41:VAL:HG22	1:D:263:ASN:HD21	1.75	0.52
1:D:85:MET:HG3	1:D:177:ILE:HD13	1.90	0.52
1:D:363:CYS:HA	1:D:368:LYS:HG3	1.92	0.52
1:D:226:ILE:O	1:D:229:ARG:HG2	2.10	0.52
1:B:282:ASN:ND2	4:B:2078:HOH:O	2.44	0.51
1:A:177:ILE:HB	1:A:198:ALA:HB3	1.93	0.51
1:B:46:HIS:HE1	1:C:342:GLU:OE2	1.94	0.51
1:C:320:ILE:HD11	1:C:357:VAL:CG2	2.41	0.51
1:A:230:ARG:NH2	1:C:311:ARG:HH12	2.08	0.51
1:C:344:GLN:HE21	1:C:345:GLY:H	1.57	0.51
1:A:316:THR:O	1:A:358:GLY:HA2	2.11	0.51
1:A:74:VAL:HG23	1:A:216:ILE:HD13	1.92	0.51
2:A:1390:PLP:C4A	3:A:1391:GOL:C1	2.89	0.51
1:B:8:ALA:HA	1:B:11:ARG:HE	1.75	0.51
1:C:81:GLY:HA2	1:C:216:ILE:HD11	1.92	0.50
1:C:200:TYR:HB3	1:C:216:ILE:HG13	1.94	0.50
1:B:7:PRO:CB	1:C:58:ASP:HB3	2.41	0.50

Continued on next page...

Continued from previous page...

Atom-1	Atom-2	Interatomic distance (Å)	Clash overlap (Å)
1:A:342:GLU:OE2	1:D:46:HIS:HE1	1.94	0.50
1:A:344:GLN:HE21	1:A:345:GLY:H	1.59	0.50
1:B:316:THR:O	1:B:358:GLY:HA2	2.11	0.50
1:D:360:MET:HE2	4:D:2003:HOH:O	2.11	0.50
1:C:170:HIS:HE1	1:C:197:ASP:OD2	1.94	0.50
1:A:322:ILE:HD12	1:A:328:TRP:CB	2.39	0.50
1:C:78:ALA:HB3	2:C:1390:PLP:O4P	2.12	0.49
1:B:257:HIS:O	1:C:107:ARG:NH1	2.42	0.49
1:A:329:TRP:CH2	1:A:333:GLN:HG3	2.47	0.49
1:B:277:GLU:HG3	4:C:2005:HOH:O	2.13	0.49
1:A:85:MET:HG3	1:A:177:ILE:HD13	1.93	0.49
1:B:74:VAL:CG2	1:B:216:ILE:HD13	2.43	0.49
1:D:170:HIS:HE1	1:D:197:ASP:OD2	1.95	0.49
1:D:8:ALA:HA	1:D:11:ARG:HE	1.77	0.49
1:D:334:TYR:HD2	1:D:379:SER:OG	1.94	0.49
1:C:327:ASP:H	1:C:384:HIS:HE1	1.58	0.48
1:A:78:ALA:HB3	2:A:1390:PLP:O4P	2.13	0.48
1:A:366:VAL:O	1:A:370:GLN:HG2	2.13	0.48
1:D:81:GLY:HA2	1:D:216:ILE:HD11	1.95	0.48
1:B:125:PRO:HG2	1:B:128:ARG:HB2	1.95	0.48
1:D:25:GLY:N	1:D:360:MET:HE1	2.28	0.48
1:B:170:HIS:HD2	1:B:195:GLU:OE1	1.97	0.48
1:B:275:ILE:O	1:B:275:ILE:HG13	2.14	0.48
1:D:74:VAL:HG23	1:D:216:ILE:HD13	1.96	0.48
1:D:136:ALA:HB2	1:D:168:ILE:HD13	1.95	0.48
1:A:320:ILE:HD11	1:A:357:VAL:CG2	2.44	0.47
1:B:122:ILE:HD11	1:B:134:THR:HG22	1.95	0.47
1:C:177:ILE:HB	1:C:198:ALA:HB3	1.95	0.47
1:D:322:ILE:HG12	1:D:353:LYS:O	2.14	0.47
1:D:125:PRO:HG2	1:D:128:ARG:HB2	1.97	0.47
1:D:180:ALA:O	1:D:201:THR:HG23	2.15	0.47
1:D:344:GLN:HA	1:D:344:GLN:HE21	1.77	0.47
1:D:344:GLN:HE21	1:D:345:GLY:H	1.61	0.47
1:C:103:ILE:HG21	1:C:347:LEU:HD13	1.96	0.47
1:D:78:ALA:HB3	2:D:1390:PLP:O4P	2.13	0.47
1:A:74:VAL:CG2	1:A:216:ILE:HD13	2.44	0.47
1:B:85:MET:HG3	1:B:177:ILE:HD13	1.97	0.47
1:D:200:TYR:HB3	1:D:216:ILE:HG13	1.96	0.47
1:A:360:MET:HB2	1:A:360:MET:HE3	1.59	0.47
1:B:360:MET:HB2	1:B:360:MET:HE3	1.57	0.47
1:C:8:ALA:HA	1:C:11:ARG:HE	1.79	0.47

Continued on next page...

Continued from previous page...

Atom-1	Atom-2	Interatomic distance (Å)	Clash overlap (Å)
1:A:363:CYS:HA	1:A:368:LYS:HG3	1.98	0.46
1:C:74:VAL:HG23	1:C:216:ILE:HD13	1.97	0.46
1:B:320:ILE:HD11	1:B:357:VAL:CG2	2.44	0.46
1:C:60:LEU:HD13	1:C:272:LEU:HD11	1.98	0.46
1:C:85:MET:HG3	1:C:177:ILE:HD13	1.97	0.46
1:D:97:LEU:HD11	1:D:122:ILE:HG22	1.98	0.46
1:A:255:ARG:HD2	4:A:2079:HOH:O	2.15	0.46
1:B:87:SER:HB3	1:B:115:TYR:CZ	2.51	0.46
1:A:125:PRO:HG2	1:A:128:ARG:HB2	1.98	0.45
1:A:120:ARG:HH11	1:A:142:HIS:CD2	2.22	0.45
1:B:8:ALA:O	1:B:11:ARG:HB2	2.16	0.45
1:B:326:VAL:HA	1:B:384:HIS:CE1	2.52	0.45
1:D:201:THR:O	1:D:214:THR:HG23	2.16	0.45
1:A:87:SER:HB3	1:A:115:TYR:CZ	2.51	0.45
1:C:24:PRO:C	1:C:360:MET:HE1	2.37	0.45
1:A:8:ALA:HA	1:A:11:ARG:HE	1.82	0.45
1:B:322:ILE:HG12	1:B:353:LYS:O	2.16	0.45
1:C:363:CYS:HA	1:C:368:LYS:HG3	1.99	0.45
1:D:177:ILE:HB	1:D:198:ALA:HB3	1.98	0.45
1:B:200:TYR:HB3	1:B:216:ILE:HG13	1.98	0.44
1:A:14:LEU:HD21	1:D:266:PHE:HB3	1.98	0.44
1:B:79:HIS:NE2	1:B:107:ARG:NH1	2.65	0.44
1:B:271:ALA:O	1:B:275:ILE:HG22	2.16	0.44
1:B:81:GLY:HA2	1:B:216:ILE:HD11	1.99	0.44
1:D:320:ILE:HD11	1:D:357:VAL:CG2	2.48	0.44
1:B:103:ILE:HG21	1:B:347:LEU:HD13	2.00	0.44
1:A:230:ARG:NH2	1:C:311:ARG:HH22	1.96	0.44
1:B:60:LEU:HD13	1:B:272:LEU:HD11	1.99	0.44
1:C:74:VAL:CG2	1:C:216:ILE:HD13	2.47	0.43
1:A:329:TRP:NE1	1:A:333:GLN:NE2	2.64	0.43
1:D:79:HIS:NE2	1:D:107:ARG:NH1	2.63	0.43
1:B:344:GLN:HE21	1:B:345:GLY:H	1.67	0.43
1:C:141:LEU:HD13	1:C:142:HIS:CE1	2.53	0.43
1:A:259:THR:OG1	2:D:1390:PLP:O1P	2.22	0.43
1:B:327:ASP:OD2	1:B:330:LYS:HG3	2.19	0.43
1:C:136:ALA:HB2	1:C:168:ILE:HD13	2.01	0.43
1:D:170:HIS:HD2	4:D:2024:HOH:O	2.02	0.43
1:A:275:ILE:O	1:A:275:ILE:HG13	2.19	0.42
1:B:266:PHE:HB3	1:C:14:LEU:HD21	2.01	0.42
1:D:43:SER:H	1:D:46:HIS:CD2	2.37	0.42
1:A:81:GLY:HA2	1:A:216:ILE:HD11	2.01	0.42

Continued on next page...

Continued from previous page...

Atom-1	Atom-2	Interatomic distance (Å)	Clash overlap (Å)
1:A:85:MET:CE	1:A:216:ILE:HG12	2.48	0.42
1:D:331:VAL:HG22	1:D:383:THR:HG21	2.01	0.42
1:C:7:PRO:HG2	1:C:10:LEU:HD12	2.00	0.42
1:D:74:VAL:CG2	1:D:216:ILE:HD13	2.49	0.42
1:D:103:ILE:HG21	1:D:347:LEU:HD13	2.01	0.42
1:C:180:ALA:O	1:C:201:THR:HG23	2.19	0.42
1:D:322:ILE:HG12	1:D:322:ILE:H	1.58	0.42
1:A:83:GLU:HB3	1:A:238:TRP:CZ2	2.54	0.42
1:B:177:ILE:HB	1:B:198:ALA:HB3	2.02	0.42
1:B:363:CYS:HA	1:B:368:LYS:HG3	2.00	0.42
1:B:3:PHE:CE2	1:C:190:TYR:HE2	2.38	0.42
1:A:136:ALA:HB2	1:A:168:ILE:HD13	2.02	0.42
1:B:41:VAL:HG11	1:C:211:PRO:HD3	2.02	0.42
1:B:184:LEU:HB3	1:B:201:THR:HG21	2.01	0.41
1:D:275:ILE:O	1:D:275:ILE:HG13	2.20	0.41
1:D:366:VAL:O	1:D:370:GLN:HG2	2.20	0.41
1:C:132:LEU:HD22	1:C:168:ILE:CD1	2.51	0.41
1:B:3:PHE:CE2	4:C:2041:HOH:O	2.56	0.41
1:B:179:ASP:OD1	2:B:1390:PLP:H2A2	2.20	0.41
1:C:206:VAL:N	4:C:2043:HOH:O	2.52	0.41
1:D:344:GLN:HA	1:D:344:GLN:NE2	2.36	0.41
1:B:7:PRO:HB3	1:C:58:ASP:HB3	2.02	0.41
1:B:61:ARG:HD2	4:B:2016:HOH:O	2.20	0.41
1:C:133:GLU:HB3	1:C:137:ARG:NH2	2.36	0.41
3:D:1391:GOL:O3	3:D:1391:GOL:O1	2.32	0.41
1:A:151:HIS:HE1	4:A:2050:HOH:O	2.03	0.41
1:D:133:GLU:HB3	1:D:137:ARG:NH2	2.36	0.41
1:A:74:VAL:HG23	1:A:216:ILE:CD1	2.51	0.40
1:B:141:LEU:HD13	1:B:142:HIS:CE1	2.56	0.40
1:A:253:PRO:CD	1:C:190:TYR:CZ	3.04	0.40
1:A:122:ILE:HD11	1:A:134:THR:HG22	2.03	0.40
1:A:253:PRO:HG2	1:B:2:LYS:N	2.36	0.40
1:A:329:TRP:CZ2	1:A:333:GLN:CG	3.05	0.40
1:A:329:TRP:CE2	1:A:333:GLN:NE2	2.89	0.40
1:C:87:SER:HB3	1:C:115:TYR:CZ	2.57	0.40

There are no symmetry-related clashes.

5.3 Torsion angles [i](#)

5.3.1 Protein backbone [i](#)

In the following table, the Percentiles column shows the percent Ramachandran outliers of the chain as a percentile score with respect to all X-ray entries followed by that with respect to entries of similar resolution.

The Analysed column shows the number of residues for which the backbone conformation was analysed, and the total number of residues.

Mol	Chain	Analysed	Favoured	Allowed	Outliers	Percentiles	
1	A	386/396 (98%)	376 (97%)	10 (3%)	0	100	100
1	B	386/396 (98%)	375 (97%)	10 (3%)	1 (0%)	41	55
1	C	386/396 (98%)	375 (97%)	10 (3%)	1 (0%)	41	55
1	D	386/396 (98%)	375 (97%)	11 (3%)	0	100	100
All	All	1544/1584 (98%)	1501 (97%)	41 (3%)	2 (0%)	51	68

All (2) Ramachandran outliers are listed below:

Mol	Chain	Res	Type
1	C	205	LYS
1	B	205	LYS

5.3.2 Protein sidechains [i](#)

In the following table, the Percentiles column shows the percent sidechain outliers of the chain as a percentile score with respect to all X-ray entries followed by that with respect to entries of similar resolution.

The Analysed column shows the number of residues for which the sidechain conformation was analysed, and the total number of residues.

Mol	Chain	Analysed	Rotameric	Outliers	Percentiles	
1	A	328/335 (98%)	303 (92%)	25 (8%)	13	20
1	B	328/335 (98%)	302 (92%)	26 (8%)	12	19
1	C	328/335 (98%)	301 (92%)	27 (8%)	11	17
1	D	326/335 (97%)	299 (92%)	27 (8%)	11	17
All	All	1310/1340 (98%)	1205 (92%)	105 (8%)	12	18

All (105) residues with a non-rotameric sidechain are listed below:

Mol	Chain	Res	Type
1	A	2	LYS
1	A	4	THR
1	A	31	LYS
1	A	38	THR
1	A	60	LEU
1	A	122	ILE
1	A	123	GLU
1	A	141	LEU
1	A	173	ASP
1	A	177	ILE
1	A	201	THR
1	A	204	GLN
1	A	207	LEU
1	A	216	ILE
1	A	230	ARG
1	A	240	LEU
1	A	275	ILE
1	A	294	LEU
1	A	308	LYS
1	A	344	GLN
1	A	347	LEU
1	A	370	GLN
1	A	380	LEU
1	A	383	THR
1	A	388	ILE
1	B	2	LYS
1	B	4	THR
1	B	31	LYS
1	B	38	THR
1	B	60	LEU
1	B	122	ILE
1	B	123	GLU
1	B	141	LEU
1	B	173	ASP
1	B	177	ILE
1	B	201	THR
1	B	204	GLN
1	B	207	LEU
1	B	216	ILE
1	B	230	ARG
1	B	240	LEU
1	B	262	SER
1	B	275	ILE

Continued on next page...

Continued from previous page...

Mol	Chain	Res	Type
1	B	308	LYS
1	B	322	ILE
1	B	332	SER
1	B	344	GLN
1	B	347	LEU
1	B	370	GLN
1	B	380	LEU
1	B	383	THR
1	C	2	LYS
1	C	4	THR
1	C	31	LYS
1	C	38	THR
1	C	60	LEU
1	C	122	ILE
1	C	123	GLU
1	C	141	LEU
1	C	173	ASP
1	C	177	ILE
1	C	195	GLU
1	C	201	THR
1	C	204	GLN
1	C	207	LEU
1	C	216	ILE
1	C	230	ARG
1	C	240	LEU
1	C	275	ILE
1	C	283	GLN
1	C	308	LYS
1	C	322	ILE
1	C	344	GLN
1	C	347	LEU
1	C	370	GLN
1	C	380	LEU
1	C	383	THR
1	C	388	ILE
1	D	2	LYS
1	D	4	THR
1	D	31	LYS
1	D	38	THR
1	D	60	LEU
1	D	122	ILE
1	D	123	GLU

Continued on next page...

Continued from previous page...

Mol	Chain	Res	Type
1	D	141	LEU
1	D	173	ASP
1	D	177	ILE
1	D	201	THR
1	D	204	GLN
1	D	207	LEU
1	D	216	ILE
1	D	230	ARG
1	D	240	LEU
1	D	262	SER
1	D	275	ILE
1	D	283	GLN
1	D	308	LYS
1	D	322	ILE
1	D	344	GLN
1	D	347	LEU
1	D	370	GLN
1	D	379	SER
1	D	380	LEU
1	D	383	THR

Sometimes sidechains can be flipped to improve hydrogen bonding and reduce clashes. All (52) such sidechains are listed below:

Mol	Chain	Res	Type
1	A	28	ASN
1	A	46	HIS
1	A	68	ASN
1	A	142	HIS
1	A	143	GLN
1	A	151	HIS
1	A	170	HIS
1	A	172	HIS
1	A	204	GLN
1	A	263	ASN
1	A	283	GLN
1	A	344	GLN
1	A	370	GLN
1	A	384	HIS
1	B	28	ASN
1	B	46	HIS
1	B	68	ASN
1	B	142	HIS

Continued on next page...

Continued from previous page...

Mol	Chain	Res	Type
1	B	143	GLN
1	B	151	HIS
1	B	170	HIS
1	B	172	HIS
1	B	204	GLN
1	B	263	ASN
1	B	282	ASN
1	B	283	GLN
1	B	344	GLN
1	B	370	GLN
1	B	384	HIS
1	C	28	ASN
1	C	46	HIS
1	C	68	ASN
1	C	142	HIS
1	C	151	HIS
1	C	170	HIS
1	C	204	GLN
1	C	263	ASN
1	C	283	GLN
1	C	344	GLN
1	C	370	GLN
1	C	384	HIS
1	D	28	ASN
1	D	46	HIS
1	D	68	ASN
1	D	142	HIS
1	D	151	HIS
1	D	170	HIS
1	D	204	GLN
1	D	263	ASN
1	D	283	GLN
1	D	344	GLN
1	D	370	GLN

5.3.3 RNA [i](#)

There are no RNA molecules in this entry.

5.4 Non-standard residues in protein, DNA, RNA chains [i](#)

There are no non-standard protein/DNA/RNA residues in this entry.

5.5 Carbohydrates [i](#)

There are no monosaccharides in this entry.

5.6 Ligand geometry [i](#)

8 ligands are modelled in this entry.

In the following table, the Counts columns list the number of bonds (or angles) for which Mogul statistics could be retrieved, the number of bonds (or angles) that are observed in the model and the number of bonds (or angles) that are defined in the Chemical Component Dictionary. The Link column lists molecule types, if any, to which the group is linked. The Z score for a bond length (or angle) is the number of standard deviations the observed value is removed from the expected value. A bond length (or angle) with $|Z| > 2$ is considered an outlier worth inspection. RMSZ is the root-mean-square of all Z scores of the bond lengths (or angles).

Mol	Type	Chain	Res	Link	Bond lengths			Bond angles		
					Counts	RMSZ	# Z > 2	Counts	RMSZ	# Z > 2
2	PLP	B	1390	1	15,15,16	1.96	3 (20%)	20,22,23	1.73	3 (15%)
3	GOL	C	1391	-	5,5,5	0.37	0	5,5,5	0.45	0
2	PLP	C	1390	1	15,15,16	2.02	3 (20%)	20,22,23	1.83	4 (20%)
3	GOL	A	1391	-	5,5,5	0.38	0	5,5,5	0.54	0
2	PLP	A	1390	1	15,15,16	1.78	3 (20%)	20,22,23	1.83	4 (20%)
3	GOL	B	1391	-	5,5,5	0.40	0	5,5,5	0.45	0
3	GOL	D	1391	-	5,5,5	0.36	0	5,5,5	0.76	0
2	PLP	D	1390	1	15,15,16	2.04	3 (20%)	20,22,23	1.86	5 (25%)

In the following table, the Chirals column lists the number of chiral outliers, the number of chiral centers analysed, the number of these observed in the model and the number defined in the Chemical Component Dictionary. Similar counts are reported in the Torsion and Rings columns. '-' means no outliers of that kind were identified.

Mol	Type	Chain	Res	Link	Chirals	Torsions	Rings
2	PLP	B	1390	1	-	4/6/6/8	0/1/1/1
3	GOL	C	1391	-	-	2/4/4/4	-
2	PLP	C	1390	1	-	4/6/6/8	0/1/1/1
3	GOL	A	1391	-	-	4/4/4/4	-
2	PLP	A	1390	1	-	4/6/6/8	0/1/1/1
3	GOL	B	1391	-	-	4/4/4/4	-
3	GOL	D	1391	-	-	4/4/4/4	-
2	PLP	D	1390	1	-	3/6/6/8	0/1/1/1

All (12) bond length outliers are listed below:

Mol	Chain	Res	Type	Atoms	Z	Observed(Å)	Ideal(Å)
2	D	1390	PLP	O3-C3	-5.91	1.23	1.37
2	C	1390	PLP	O3-C3	-5.50	1.24	1.37
2	B	1390	PLP	O3-C3	-5.33	1.24	1.37
2	A	1390	PLP	O3-C3	-5.13	1.25	1.37
2	B	1390	PLP	C2-N1	3.51	1.40	1.33
2	C	1390	PLP	C2-N1	3.38	1.40	1.33
2	D	1390	PLP	C2-N1	3.35	1.40	1.33
2	D	1390	PLP	C6-N1	2.92	1.40	1.34
2	A	1390	PLP	C2-N1	2.88	1.39	1.33
2	C	1390	PLP	C6-N1	2.87	1.40	1.34
2	B	1390	PLP	C6-N1	2.67	1.40	1.34
2	A	1390	PLP	C6-N1	2.09	1.38	1.34

All (16) bond angle outliers are listed below:

Mol	Chain	Res	Type	Atoms	Z	Observed(°)	Ideal(°)
2	C	1390	PLP	O4P-C5A-C5	5.07	119.01	109.35
2	B	1390	PLP	O4P-C5A-C5	5.05	118.97	109.35
2	A	1390	PLP	O4P-C5A-C5	4.76	118.43	109.35
2	D	1390	PLP	O2P-P-O4P	-4.40	95.01	106.73
2	A	1390	PLP	C6-C5-C4	3.84	121.18	118.16
2	D	1390	PLP	O4P-C5A-C5	3.68	116.37	109.35
2	D	1390	PLP	C6-C5-C4	3.60	120.99	118.16
2	C	1390	PLP	C6-C5-C4	3.45	120.88	118.16
2	A	1390	PLP	C5-C6-N1	-3.05	118.74	123.82
2	B	1390	PLP	C6-C5-C4	3.02	120.54	118.16
2	C	1390	PLP	O2P-P-O4P	-2.97	98.83	106.73
2	B	1390	PLP	C5-C6-N1	-2.54	119.59	123.82
2	D	1390	PLP	C5-C6-N1	-2.52	119.61	123.82
2	D	1390	PLP	O3P-P-O2P	2.39	116.77	107.64
2	C	1390	PLP	C5-C6-N1	-2.31	119.97	123.82
2	A	1390	PLP	O3-C3-C2	2.10	122.07	117.49

There are no chirality outliers.

All (29) torsion outliers are listed below:

Mol	Chain	Res	Type	Atoms
2	A	1390	PLP	C5A-O4P-P-O2P
2	A	1390	PLP	C5A-O4P-P-O3P
2	B	1390	PLP	C5A-O4P-P-O2P
2	C	1390	PLP	C5A-O4P-P-O2P

Continued on next page...

Continued from previous page...

Mol	Chain	Res	Type	Atoms
2	C	1390	PLP	C5A-O4P-P-O3P
2	D	1390	PLP	C5A-O4P-P-O2P
3	B	1391	GOL	O1-C1-C2-C3
3	B	1391	GOL	C1-C2-C3-O3
3	C	1391	GOL	O1-C1-C2-O2
3	C	1391	GOL	O1-C1-C2-C3
3	D	1391	GOL	O1-C1-C2-C3
3	A	1391	GOL	O1-C1-C2-C3
3	A	1391	GOL	C1-C2-C3-O3
3	D	1391	GOL	C1-C2-C3-O3
3	B	1391	GOL	O1-C1-C2-O2
3	D	1391	GOL	O1-C1-C2-O2
3	D	1391	GOL	O2-C2-C3-O3
3	A	1391	GOL	O1-C1-C2-O2
3	B	1391	GOL	O2-C2-C3-O3
2	A	1390	PLP	C4-C5-C5A-O4P
2	B	1390	PLP	C4-C5-C5A-O4P
2	C	1390	PLP	C4-C5-C5A-O4P
2	D	1390	PLP	C4-C5-C5A-O4P
3	A	1391	GOL	O2-C2-C3-O3
2	A	1390	PLP	C6-C5-C5A-O4P
2	B	1390	PLP	C6-C5-C5A-O4P
2	C	1390	PLP	C6-C5-C5A-O4P
2	D	1390	PLP	C6-C5-C5A-O4P
2	B	1390	PLP	C5A-O4P-P-O3P

There are no ring outliers.

6 monomers are involved in 11 short contacts:

Mol	Chain	Res	Type	Clashes	Symm-Clashes
2	B	1390	PLP	2	0
2	C	1390	PLP	1	0
3	A	1391	GOL	2	0
2	A	1390	PLP	3	0
3	D	1391	GOL	3	0
2	D	1390	PLP	4	0

5.7 Other polymers

There are no such residues in this entry.

5.8 Polymer linkage issues

There are no chain breaks in this entry.

6 Fit of model and data [i](#)

6.1 Protein, DNA and RNA chains [i](#)

EDS was not executed - this section is therefore empty.

6.2 Non-standard residues in protein, DNA, RNA chains [i](#)

EDS was not executed - this section is therefore empty.

6.3 Carbohydrates [i](#)

EDS was not executed - this section is therefore empty.

6.4 Ligands [i](#)

EDS was not executed - this section is therefore empty.

6.5 Other polymers [i](#)

EDS was not executed - this section is therefore empty.