



## wwPDB EM Validation Summary Report ⓘ

Mar 4, 2024 – 07:18 AM EST

PDB ID : 6CHS  
EMDB ID : EMD-7476  
Title : Cdc48-Npl4 complex in the presence of ATP-gamma-S  
Authors : Kim, K.H.; Bodnar, N.O.; Walz, T.; Rapoport, T.A.  
Deposited on : 2018-02-22  
Resolution : 4.30 Å(reported)

This is a wwPDB EM Validation Summary Report for a publicly released PDB entry.

We welcome your comments at [validation@mail.wwpdb.org](mailto:validation@mail.wwpdb.org)

A user guide is available at

<https://www.wwpdb.org/validation/2017/EMValidationReportHelp>

with specific help available everywhere you see the ⓘ symbol.

The types of validation reports are described at

<http://www.wwpdb.org/validation/2017/FAQs#types>.

---

The following versions of software and data (see [references ⓘ](#)) were used in the production of this report:

EMDB validation analysis : 0.0.1.dev70  
Mogul : 1.8.5 (274361), CSD as541be (2020)  
MolProbity : 4.02b-467  
buster-report : 1.1.7 (2018)  
Percentile statistics : 20191225.v01 (using entries in the PDB archive December 25th 2019)  
MapQ : 1.9.13  
Ideal geometry (proteins) : Engh & Huber (2001)  
Ideal geometry (DNA, RNA) : Parkinson et al. (1996)  
Validation Pipeline (wwPDB-VP) : 2.36

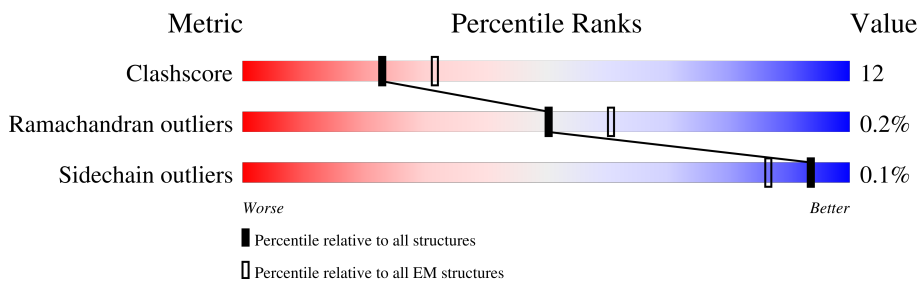
# 1 Overall quality at a glance

The following experimental techniques were used to determine the structure:

*ELECTRON MICROSCOPY*

The reported resolution of this entry is 4.30 Å.

Percentile scores (ranging between 0-100) for global validation metrics of the entry are shown in the following graphic. The table shows the number of entries on which the scores are based.



Metric	Whole archive (#Entries)	EM structures (#Entries)
Clashscore	158937	4297
Ramachandran outliers	154571	4023
Sidechain outliers	154315	3826

The table below summarises the geometric issues observed across the polymeric chains and their fit to the map. The red, orange, yellow and green segments of the bar indicate the fraction of residues that contain outliers for  $\geq 3$ , 2, 1 and 0 types of geometric quality criteria respectively. A grey segment represents the fraction of residues that are not modelled. The numeric value for each fraction is indicated below the corresponding segment, with a dot representing fractions  $\leq 5\%$ . The upper red bar (where present) indicates the fraction of residues that have poor fit to the EM map (all-atom inclusion  $< 40\%$ ). The numeric value is given above the bar.

Mol	Chain	Length	Quality of chain
1	A	659	
2	D	819	
2	E	819	
2	F	819	
2	H	819	
2	I	819	
2	J	819	

## 2 Entry composition [i](#)

There are 5 unique types of molecules in this entry. The entry contains 29502 atoms, of which 0 are hydrogens and 0 are deuteriums.

In the tables below, the AltConf column contains the number of residues with at least one atom in alternate conformation and the Trace column contains the number of residues modelled with at most 2 atoms.

- Molecule 1 is a protein called Npl4.

Mol	Chain	Residues	Atoms					AltConf	Trace
			Total	C	N	O	S		
1	A	460	3658	2326	626	684	22	0	0

- Molecule 2 is a protein called Putative cell division control protein.

Mol	Chain	Residues	Atoms					AltConf	Trace
			Total	C	N	O	S		
2	H	550	4243	2662	746	813	22	0	0
2	I	550	4243	2662	746	813	22	0	0
2	J	550	4243	2662	746	813	22	0	0
2	D	550	4243	2662	746	813	22	0	0
2	E	550	4243	2662	746	813	22	0	0
2	F	550	4243	2662	746	813	22	0	0

- Molecule 3 is ZINC ION (three-letter code: ZN) (formula: Zn).

Mol	Chain	Residues	Atoms		AltConf
3	A	2	Total	Zn	0
			2	2	

- Molecule 4 is PHOSPHOTHIOPHOSPHORIC ACID-ADENYLATE ESTER (three-letter code: AGS) (formula: C<sub>10</sub>H<sub>16</sub>N<sub>5</sub>O<sub>12</sub>P<sub>3</sub>S).



Mol	Chain	Residues	Atoms		AltConf
5	H	2	Total 2	Mg 2	0
5	I	2	Total 2	Mg 2	0
5	J	2	Total 2	Mg 2	0
5	D	2	Total 2	Mg 2	0
5	E	2	Total 2	Mg 2	0
5	F	2	Total 2	Mg 2	0



SER  
SER  
PRO  
LYS  
PRO  
PRO  
ALA  
PRO  
SER  
SER  
TRP  
ASN  
LEU

• Molecule 2: Putative cell division control protein



MET  
ALA  
PRO  
GLU  
LYS  
SER  
LYS  
ASP  
HIS  
LYS  
LYS  
LYS  
LYS  
VAL  
ASN  
LEU

THR  
MET  
GLU  
ALA  
LEU  
GLN  
LEU  
PHE  
ARG  
GLY  
LYS  
VAL  
THR  
LEU  
LEU

CYS  
PRO  
ASP  
ILE  
LYS  
TYR  
ALA  
LYS  
ARG  
ILE  
ALA  
VAL  
LEU  
PRO

VAL  
VAL  
GLU  
VAL  
ASP  
PRO  
PRO  
GLU  
TYR  
GLY  
ILE  
VAL  
ALA  
GLN  
THR  
THR  
ILE  
HIS  
CYS  
GLU  
GLY  
THR  
GLY  
PRO  
PRO  
ARG  
GLU  
GLU  
GLU  
GLU  
ASN  
ASN  
LEU  
M215  
D220  
D221  
D223  
D224  
A230  
R233  
E237  
L238  
P239  
L240  
L241  
R241  
Q244  
L245  
F246  
K247  
S248  
I249  
Q250

G256  
V257  
P262  
K267  
R272  
A273  
V274  
A275  
G279  
F283  
L284  
I285  
M291  
S292  
K293  
M294  
A295  
G296  
E299  
L302  
R303  
K304  
A305  
F306  
E307  
E308  
A309  
E310  
I319  
D323  
A326  
F327  
K328  
R329  
E330  
K331  
T332  
R333  
S334  
E335  
V336  
E337  
S338  
R339  
V340  
Y341  
S342  
Q343  
L344

L345  
D349  
K352  
A353  
S354  
S355  
R356  
T363  
R364  
R365  
F366  
L367  
S368  
I369  
D370  
R378  
F379  
D380  
S475  
R381  
E392  
I387  
P390  
R393  
T401  
K402  
L406  
A407  
D408  
D409  
E413  
A416  
T419  
H420  
G421  
D426  
E433  
Q437  
Q438  
I439  
R440  
R443  
D444  
L445  
L446

D447  
L448  
D449  
E450  
D451  
T452  
I453  
D454  
A455  
L458  
D459  
T464  
A465  
N467  
Y470  
A471  
L472  
G473  
V474  
N476  
P477  
S478  
A479  
L480  
R481  
E482  
V485  
V488  
P489  
R492  
W493  
E494  
D495  
L496  
L499  
E500  
G501  
Q504  
K507  
Q511  
Y512  
F520  
L521  
F522  
G524  
L525

S528  
R529  
G530  
V531  
L532  
P536  
T539  
G540  
K541  
M542  
M543  
L544  
A545  
K546  
A547  
V548  
A549  
M550  
E551  
M555  
K560  
G561  
P562  
E563  
S566  
M567  
W568  
F569  
G570  
E571  
S572  
E573  
S574  
M575  
L576  
R577  
D578  
I579  
F580  
D581  
K582  
A583  
R584  
A585  
A586  
V590  
D594  
E595  
L596  
D597  
S598  
I599  
A600

K601  
A602  
R603  
G604  
G605  
S606  
T607  
G608  
D609  
A610  
G611  
G612  
A613  
S614  
M619  
E624  
M625  
D626  
T629  
S630  
K631  
K632  
F635  
G638  
A639  
T640  
M641  
R642  
L646  
D647  
P648  
A649  
L650  
G651  
R652  
P653  
G654  
R655  
L656  
D657  
Q658  
E667  
R670  
L671  
L674  
R679  
K680  
T681  
P682  
V683

S684  
K685  
D686  
V687  
D688  
L689  
A690  
Y691  
L692  
A693  
S694  
K695  
T696  
H697  
G701  
A702  
D703  
L704  
Q709  
R710  
A715  
I716  
K717  
E718  
S719  
E723  
I724  
R725  
A726  
R727  
L728  
L729  
ALA  
ARG  
GLU  
LYS  
LYS  
ALA  
ASP  
GLU  
VAL  
ASN  
ASN  
MET  
ASN  
GLU  
ASP  
ASP  
GLU  
ASP  
ASP  
P745  
P747  
E748  
L749  
R752  
H753  
F754

E755  
E756  
A757  
M758  
R759  
D760  
A761  
R762  
R763  
S764  
V765  
S766  
D767  
I770  
R771  
E774  
D775  
F776  
A777  
Q778  
Q779  
M780  
K781  
M782  
A783  
GLY  
PRO  
GLY  
ALA  
PHE  
PHE  
LYS  
PHE  
PRO  
ASP  
SER  
THR  
THR  
ASP  
ASN  
SER  
ALA  
SER  
SER  
ASN  
ALA  
ALA  
GLY  
ASN  
SER  
SER  
PHE  
GLY  
ASP  
ALA  
GLY  
ASN  
ASP  
ASP  
ASP

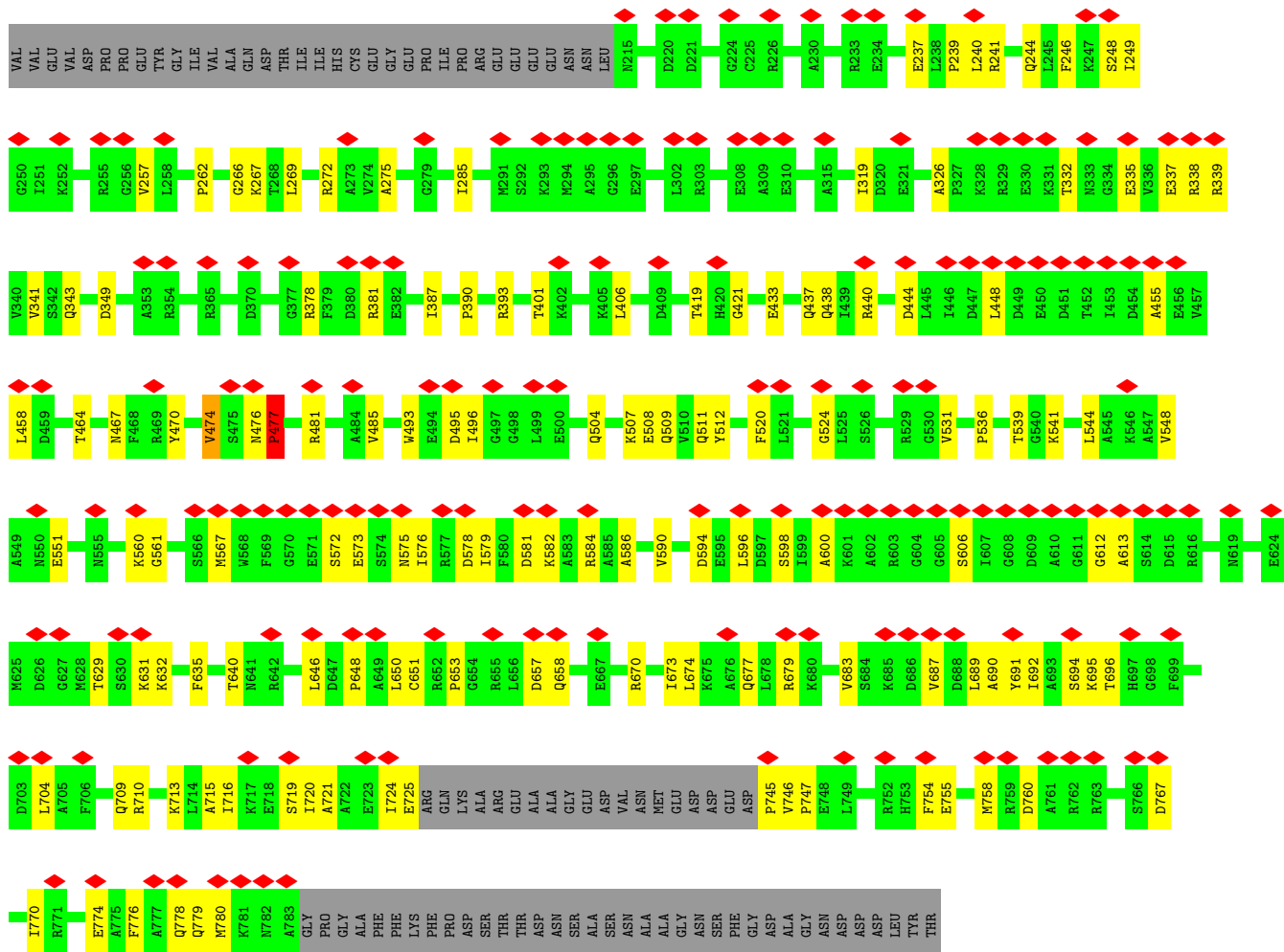
LEU  
TYR  
THR

• Molecule 2: Putative cell division control protein

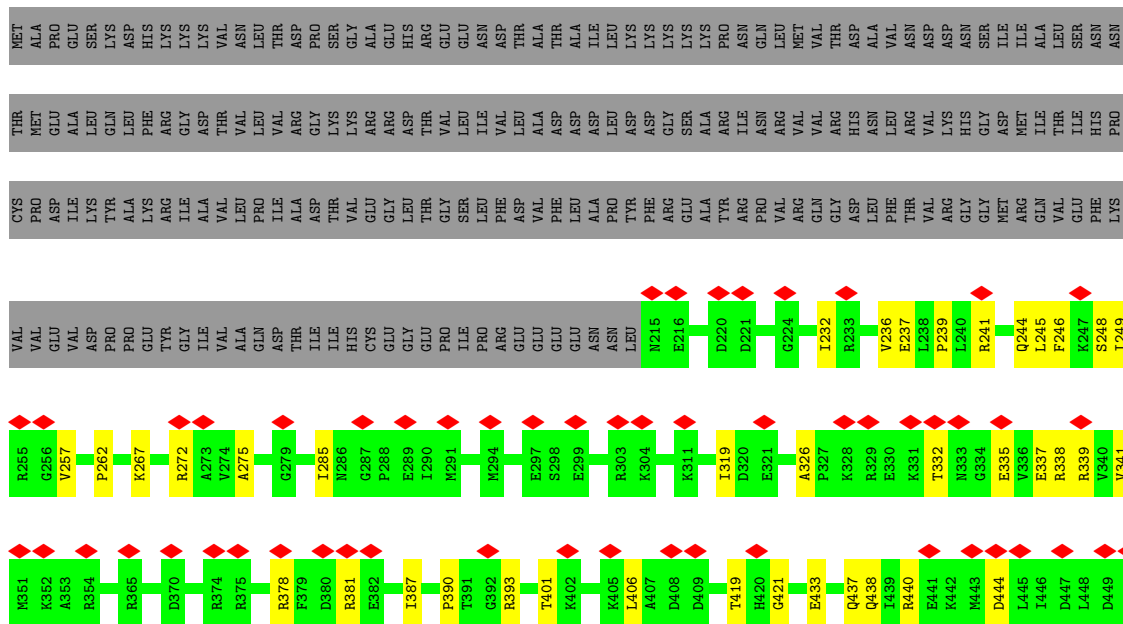








• Molecule 2: Putative cell division control protein







E756	A757	M758	R759	D760	A761	R762	R763	S764	V765	S766	D767	V768	E769	I770	R771	R772	Y773	E774	A775	F776	A777	Q778	Q779	M780	K781	N782	A783	GLY	PRO	GLY	ALA	PHE	PHE	LYS	PHE	PRO	ASP	SER	SER	THR	THR	ASP	ASN	SER	ALA	ALA	ASN	ALA	ALA	GLY	ASN	SER	PHE	GLY	ASP	ALA	GLY	ASN	ASP	ASP
------	------	------	------	------	------	------	------	------	------	------	------	------	------	------	------	------	------	------	------	------	------	------	------	------	------	------	------	-----	-----	-----	-----	-----	-----	-----	-----	-----	-----	-----	-----	-----	-----	-----	-----	-----	-----	-----	-----	-----	-----	-----	-----	-----	-----	-----	-----	-----	-----	-----	-----	-----

ASP  
LEU  
TYR  
THR

## 4 Experimental information

Property	Value	Source
EM reconstruction method	SINGLE PARTICLE	Depositor
Imposed symmetry	POINT, C1	Depositor
Number of particles used	91883	Depositor
Resolution determination method	FSC 0.143 CUT-OFF	Depositor
CTF correction method	PHASE FLIPPING AND AMPLITUDE CORRECTION	Depositor
Microscope	FEI TITAN KRIOS	Depositor
Voltage (kV)	300	Depositor
Electron dose ( $e^-/\text{\AA}^2$ )	1.8	Depositor
Minimum defocus (nm)	1200	Depositor
Maximum defocus (nm)	2800	Depositor
Magnification	22500	Depositor
Image detector	GATAN K2 SUMMIT (4k x 4k)	Depositor
Maximum map value	0.161	Depositor
Minimum map value	-0.066	Depositor
Average map value	0.001	Depositor
Map value standard deviation	0.005	Depositor
Recommended contour level	0.05	Depositor
Map size (Å)	332.8, 332.8, 332.8	wwPDB
Map dimensions	256, 256, 256	wwPDB
Map angles (°)	90.0, 90.0, 90.0	wwPDB
Pixel spacing (Å)	1.3, 1.3, 1.3	Depositor

## 5 Model quality [i](#)

### 5.1 Standard geometry [i](#)

Bond lengths and bond angles in the following residue types are not validated in this section: ZN, MG, AGS

The Z score for a bond length (or angle) is the number of standard deviations the observed value is removed from the expected value. A bond length (or angle) with  $|Z| > 5$  is considered an outlier worth inspection. RMSZ is the root-mean-square of all Z scores of the bond lengths (or angles).

Mol	Chain	Bond lengths		Bond angles	
		RMSZ	# Z  >5	RMSZ	# Z  >5
1	A	0.38	0/3752	0.57	0/5100
2	D	0.39	0/4311	0.52	0/5819
2	E	0.38	0/4311	0.51	0/5819
2	F	0.39	0/4311	0.52	0/5819
2	H	0.39	0/4311	0.51	0/5819
2	I	0.39	0/4311	0.52	0/5819
2	J	0.39	0/4311	0.52	0/5819
All	All	0.39	0/29618	0.53	0/40014

There are no bond length outliers.

There are no bond angle outliers.

There are no chirality outliers.

There are no planarity outliers.

### 5.2 Too-close contacts [i](#)

In the following table, the Non-H and H(model) columns list the number of non-hydrogen atoms and hydrogen atoms in the chain respectively. The H(added) column lists the number of hydrogen atoms added and optimized by MolProbity. The Clashes column lists the number of clashes within the asymmetric unit, whereas Symm-Clashes lists symmetry-related clashes.

Mol	Chain	Non-H	H(model)	H(added)	Clashes	Symm-Clashes
1	A	3658	0	3576	115	0
2	D	4243	0	4280	96	0
2	E	4243	0	4279	131	0
2	F	4243	0	4278	86	0
2	H	4243	0	4279	104	0
2	I	4243	0	4279	107	0

*Continued on next page...*

Continued from previous page...

Mol	Chain	Non-H	H(model)	H(added)	Clashes	Symm-Clashes
2	J	4243	0	4279	105	0
3	A	2	0	0	0	0
4	D	62	0	24	1	0
4	E	62	0	24	6	0
4	F	62	0	24	3	0
4	H	62	0	24	1	0
4	I	62	0	24	5	0
4	J	62	0	24	5	0
5	D	2	0	0	0	0
5	E	2	0	0	0	0
5	F	2	0	0	0	0
5	H	2	0	0	0	0
5	I	2	0	0	0	0
5	J	2	0	0	0	0
All	All	29502	0	29394	731	0

The all-atom clashscore is defined as the number of clashes found per 1000 atoms (including hydrogen atoms). The all-atom clashscore for this structure is 12.

The worst 5 of 731 close contacts within the same asymmetric unit are listed below, sorted by their clash magnitude.

Atom-1	Atom-2	Interatomic distance (Å)	Clash overlap (Å)
1:A:234:TRP:CZ3	1:A:238:ILE:HD12	1.67	1.28
2:E:285:ILE:HD11	2:E:290:ILE:HD11	1.28	1.15
2:F:476:ASN:HB2	2:F:477:PRO:HD3	1.28	1.13
2:E:285:ILE:CG2	2:E:319:ILE:HG12	1.78	1.13
2:I:433:GLU:HB2	2:I:476:ASN:HD21	1.12	1.09

There are no symmetry-related clashes.

## 5.3 Torsion angles [i](#)

### 5.3.1 Protein backbone [i](#)

In the following table, the Percentiles column shows the percent Ramachandran outliers of the chain as a percentile score with respect to all PDB entries followed by that with respect to all EM entries.

The Analysed column shows the number of residues for which the backbone conformation was analysed, and the total number of residues.

Mol	Chain	Analysed	Favoured	Allowed	Outliers	Percentiles	
1	A	456/659 (69%)	412 (90%)	41 (9%)	3 (1%)	22	62
2	D	546/819 (67%)	519 (95%)	27 (5%)	0	100	100
2	E	546/819 (67%)	517 (95%)	28 (5%)	1 (0%)	47	81
2	F	546/819 (67%)	519 (95%)	26 (5%)	1 (0%)	47	81
2	H	546/819 (67%)	520 (95%)	25 (5%)	1 (0%)	47	81
2	I	546/819 (67%)	518 (95%)	28 (5%)	0	100	100
2	J	546/819 (67%)	519 (95%)	25 (5%)	2 (0%)	34	72
All	All	3732/5573 (67%)	3524 (94%)	200 (5%)	8 (0%)	50	81

5 of 8 Ramachandran outliers are listed below:

Mol	Chain	Res	Type
1	A	232	PRO
2	H	478	SER
2	J	474	VAL
2	E	478	SER
1	A	224	LYS

### 5.3.2 Protein sidechains [i](#)

In the following table, the Percentiles column shows the percent sidechain outliers of the chain as a percentile score with respect to all PDB entries followed by that with respect to all EM entries.

The Analysed column shows the number of residues for which the sidechain conformation was analysed, and the total number of residues.

Mol	Chain	Analysed	Rotameric	Outliers	Percentiles	
1	A	401/576 (70%)	400 (100%)	1 (0%)	93	96
2	D	455/683 (67%)	454 (100%)	1 (0%)	93	96
2	E	455/683 (67%)	455 (100%)	0	100	100
2	F	455/683 (67%)	454 (100%)	1 (0%)	93	96
2	H	455/683 (67%)	455 (100%)	0	100	100
2	I	455/683 (67%)	455 (100%)	0	100	100
2	J	455/683 (67%)	454 (100%)	1 (0%)	93	96
All	All	3131/4674 (67%)	3127 (100%)	4 (0%)	93	97

All (4) residues with a non-rotameric sidechain are listed below:



Mol	Chain	Res	Type
1	A	234	TRP
2	J	477	PRO
2	D	477	PRO
2	F	477	PRO

Sometimes sidechains can be flipped to improve hydrogen bonding and reduce clashes. All (1) such sidechains are listed below:

Mol	Chain	Res	Type
2	I	476	ASN

### 5.3.3 RNA [i](#)

There are no RNA molecules in this entry.

## 5.4 Non-standard residues in protein, DNA, RNA chains [i](#)

There are no non-standard protein/DNA/RNA residues in this entry.

## 5.5 Carbohydrates [i](#)

There are no monosaccharides in this entry.

## 5.6 Ligand geometry [i](#)

Of 26 ligands modelled in this entry, 14 are monoatomic - leaving 12 for Mogul analysis.

In the following table, the Counts columns list the number of bonds (or angles) for which Mogul statistics could be retrieved, the number of bonds (or angles) that are observed in the model and the number of bonds (or angles) that are defined in the Chemical Component Dictionary. The Link column lists molecule types, if any, to which the group is linked. The Z score for a bond length (or angle) is the number of standard deviations the observed value is removed from the expected value. A bond length (or angle) with  $|Z| > 2$  is considered an outlier worth inspection. RMSZ is the root-mean-square of all Z scores of the bond lengths (or angles).

Mol	Type	Chain	Res	Link	Bond lengths			Bond angles		
					Counts	RMSZ	# Z  > 2	Counts	RMSZ	# Z  > 2
4	AGS	H	902	5	26,33,33	0.84	1 (3%)	26,52,52	1.37	2 (7%)
4	AGS	J	901	5	26,33,33	0.87	1 (3%)	26,52,52	1.32	2 (7%)
4	AGS	F	901	5	26,33,33	0.72	0	26,52,52	1.38	2 (7%)
4	AGS	F	902	5	26,33,33	0.81	0	26,52,52	1.26	2 (7%)

Mol	Type	Chain	Res	Link	Bond lengths			Bond angles		
					Counts	RMSZ	# Z  > 2	Counts	RMSZ	# Z  > 2
4	AGS	J	902	5	26,33,33	0.78	0	26,52,52	1.35	2 (7%)
4	AGS	I	902	5	26,33,33	0.85	1 (3%)	26,52,52	1.34	2 (7%)
4	AGS	H	901	5	26,33,33	0.83	1 (3%)	26,52,52	1.09	2 (7%)
4	AGS	E	901	5	26,33,33	0.83	2 (7%)	26,52,52	1.30	2 (7%)
4	AGS	D	901	5	26,33,33	0.78	1 (3%)	26,52,52	1.59	2 (7%)
4	AGS	D	902	5	26,33,33	0.76	0	26,52,52	1.35	2 (7%)
4	AGS	E	902	5	26,33,33	0.73	0	26,52,52	1.22	2 (7%)
4	AGS	I	901	5	26,33,33	0.85	1 (3%)	26,52,52	1.28	2 (7%)

In the following table, the Chirals column lists the number of chiral outliers, the number of chiral centers analysed, the number of these observed in the model and the number defined in the Chemical Component Dictionary. Similar counts are reported in the Torsion and Rings columns. '-' means no outliers of that kind were identified.

Mol	Type	Chain	Res	Link	Chirals	Torsions	Rings
4	AGS	H	902	5	-	1/17/38/38	0/3/3/3
4	AGS	J	901	5	-	8/17/38/38	0/3/3/3
4	AGS	F	901	5	-	8/17/38/38	0/3/3/3
4	AGS	F	902	5	-	5/17/38/38	0/3/3/3
4	AGS	J	902	5	-	6/17/38/38	0/3/3/3
4	AGS	I	902	5	-	6/17/38/38	0/3/3/3
4	AGS	H	901	5	-	6/17/38/38	0/3/3/3
4	AGS	E	901	5	-	6/17/38/38	0/3/3/3
4	AGS	D	901	5	-	3/17/38/38	0/3/3/3
4	AGS	D	902	5	-	5/17/38/38	0/3/3/3
4	AGS	E	902	5	-	5/17/38/38	0/3/3/3
4	AGS	I	901	5	-	6/17/38/38	0/3/3/3

The worst 5 of 8 bond length outliers are listed below:

Mol	Chain	Res	Type	Atoms	Z	Observed(Å)	Ideal(Å)
4	D	901	AGS	PG-S1G	2.16	1.95	1.90
4	J	901	AGS	PA-O2A	-2.09	1.45	1.55
4	H	901	AGS	PG-S1G	2.08	1.95	1.90
4	I	902	AGS	PG-S1G	2.07	1.95	1.90
4	H	902	AGS	PG-S1G	2.03	1.95	1.90

The worst 5 of 24 bond angle outliers are listed below:

Mol	Chain	Res	Type	Atoms	Z	Observed(°)	Ideal(°)
4	D	901	AGS	PA-O3A-PB	-6.95	108.99	132.83
4	F	901	AGS	PA-O3A-PB	-5.85	112.77	132.83
4	D	902	AGS	PA-O3A-PB	-5.49	113.99	132.83
4	J	901	AGS	PA-O3A-PB	-5.48	114.03	132.83
4	I	902	AGS	PA-O3A-PB	-5.43	114.18	132.83

There are no chirality outliers.

5 of 65 torsion outliers are listed below:

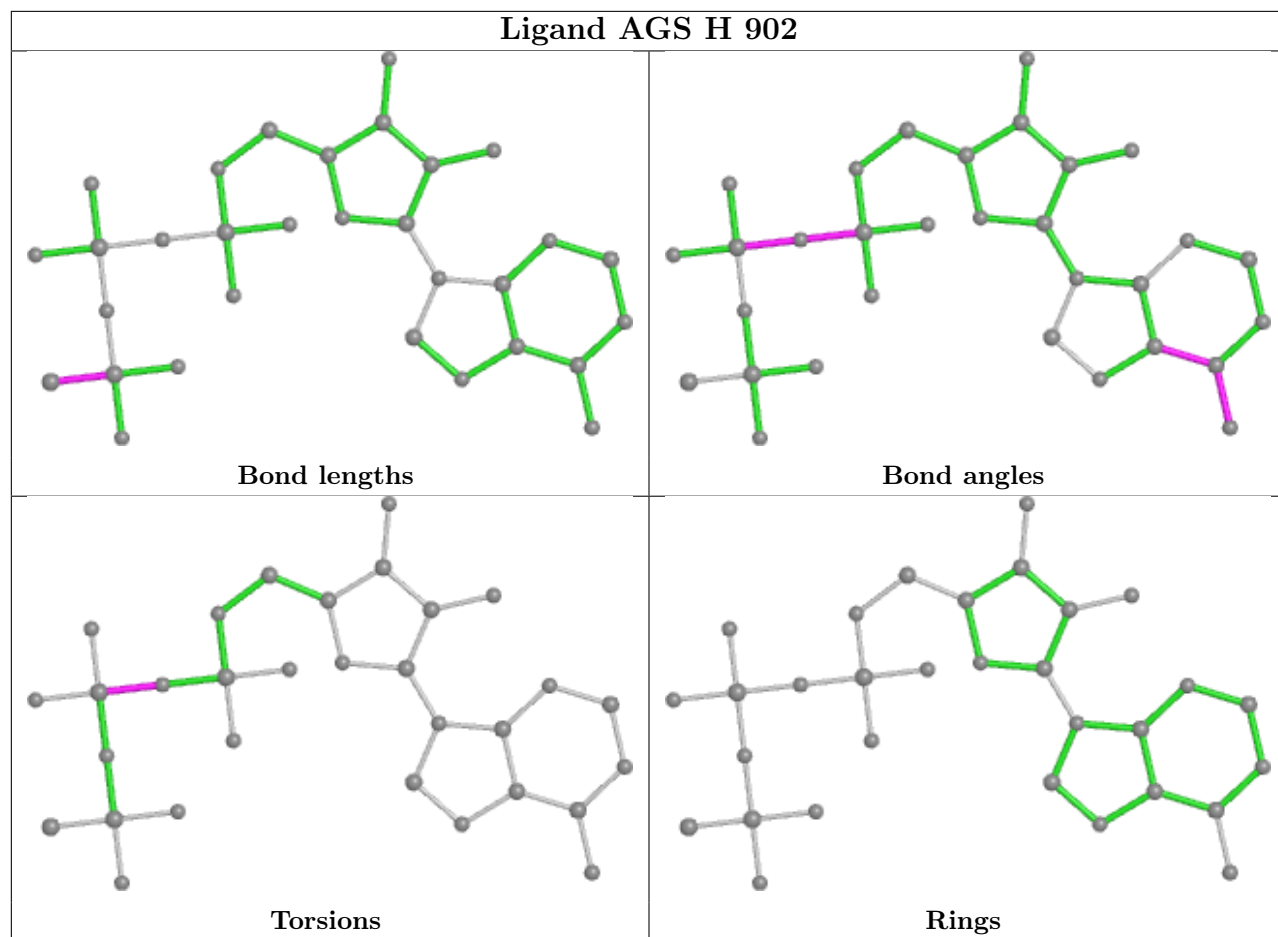
Mol	Chain	Res	Type	Atoms
4	H	901	AGS	C5'-O5'-PA-O1A
4	H	901	AGS	C5'-O5'-PA-O2A
4	H	901	AGS	O4'-C4'-C5'-O5'
4	I	901	AGS	C5'-O5'-PA-O2A
4	I	902	AGS	C5'-O5'-PA-O1A

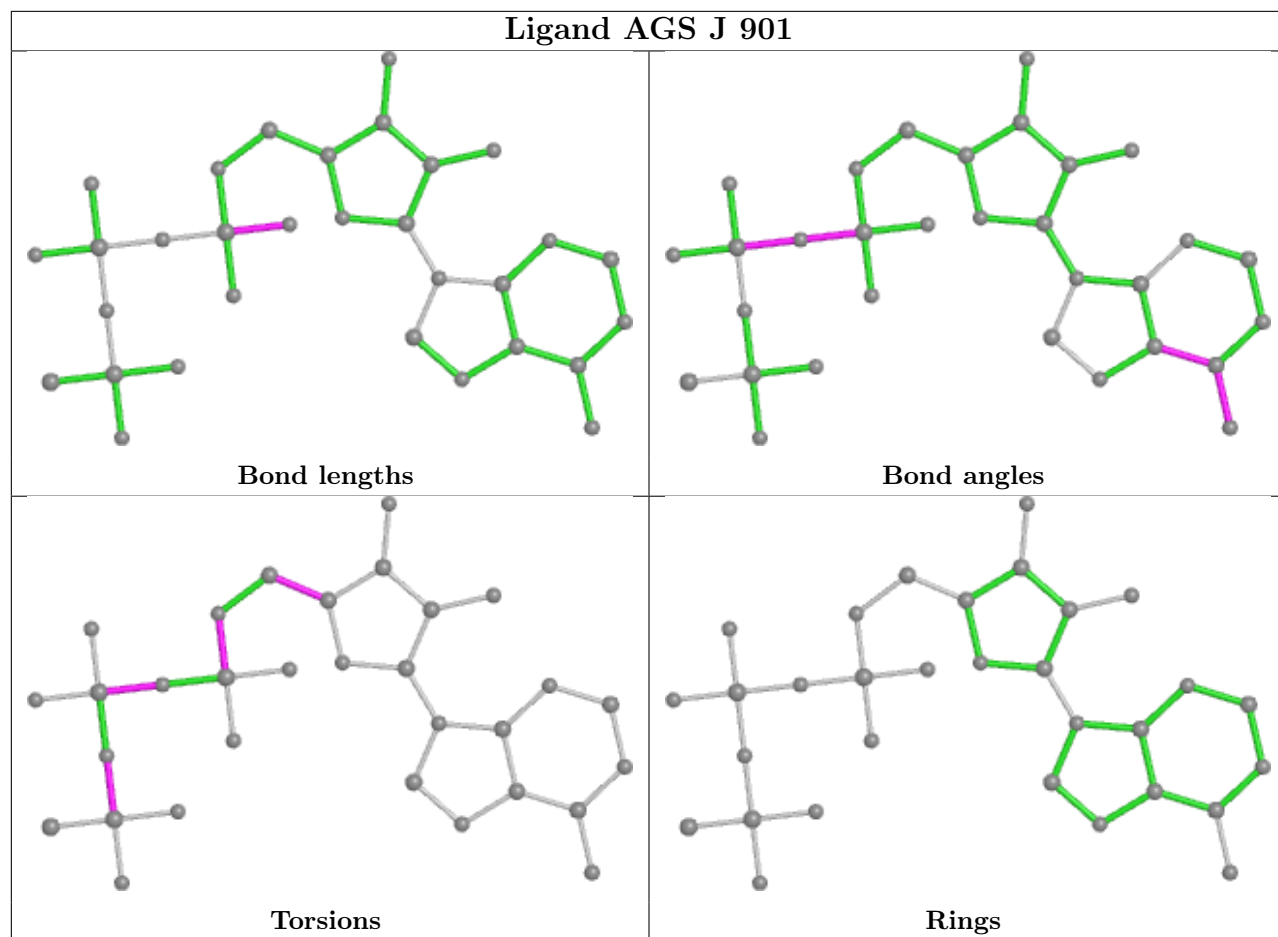
There are no ring outliers.

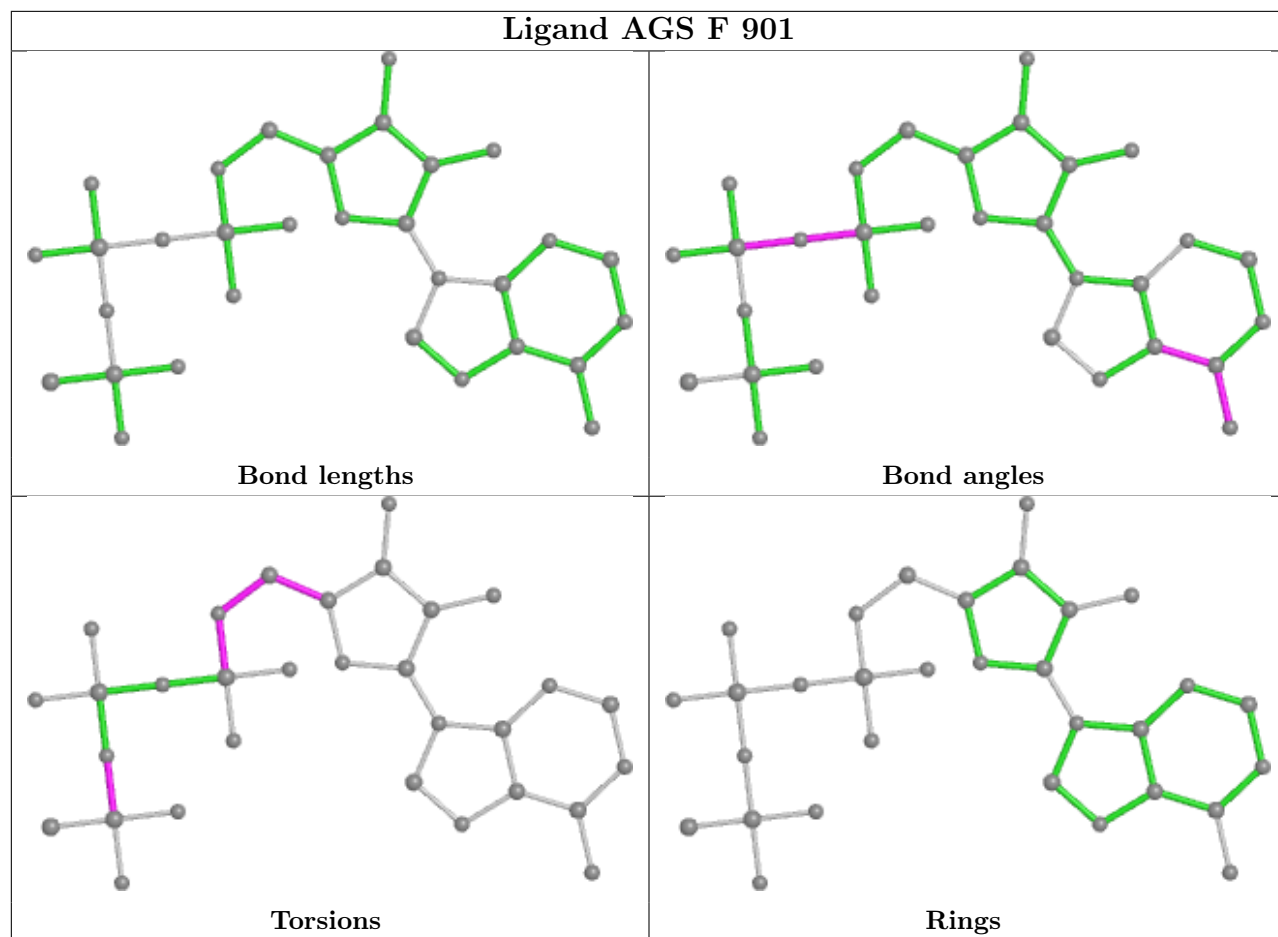
9 monomers are involved in 21 short contacts:

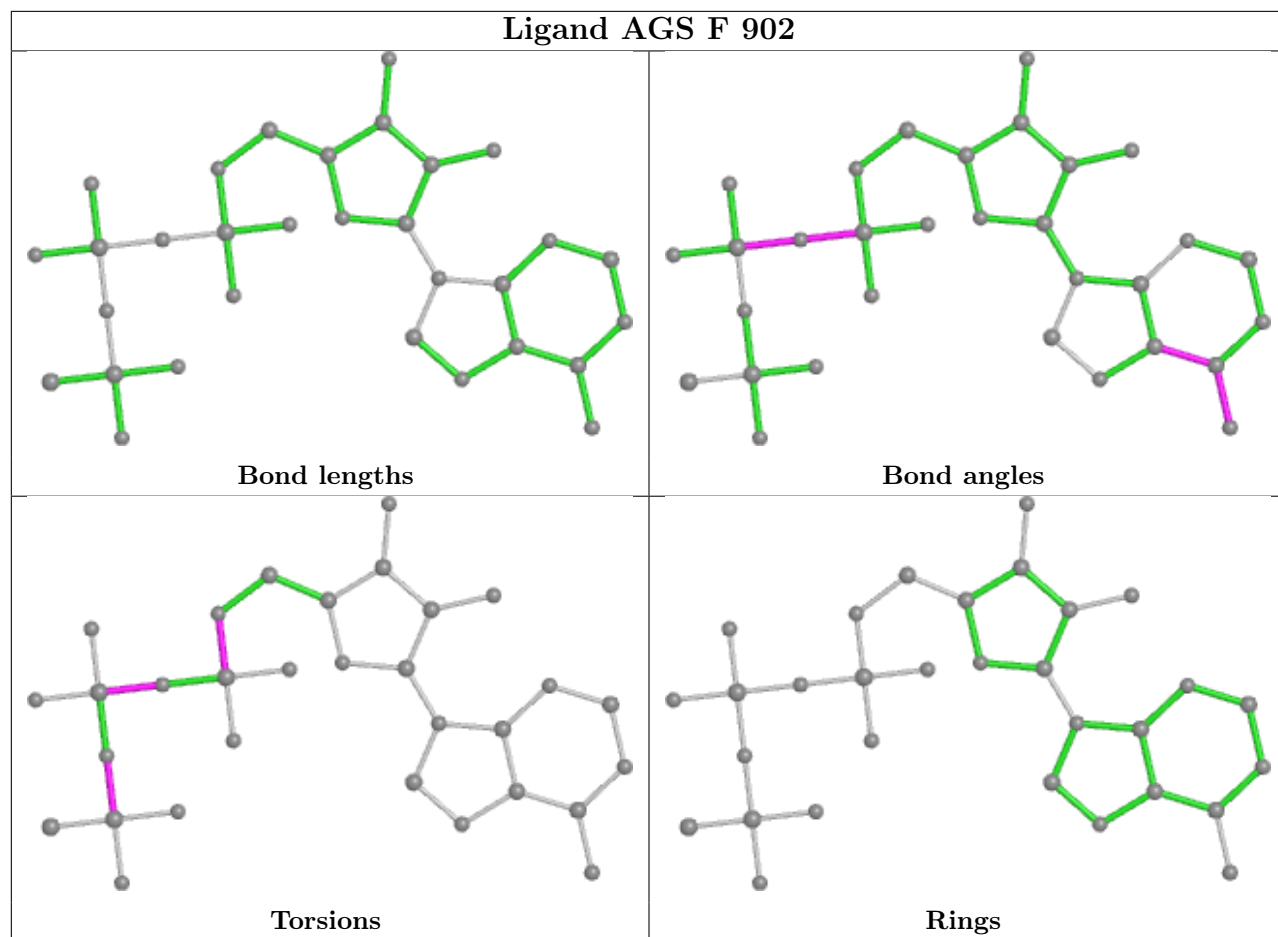
Mol	Chain	Res	Type	Clashes	Symm-Clashes
4	J	901	AGS	3	0
4	F	901	AGS	3	0
4	J	902	AGS	2	0
4	I	902	AGS	2	0
4	H	901	AGS	1	0
4	E	901	AGS	2	0
4	D	902	AGS	1	0
4	E	902	AGS	4	0
4	I	901	AGS	3	0

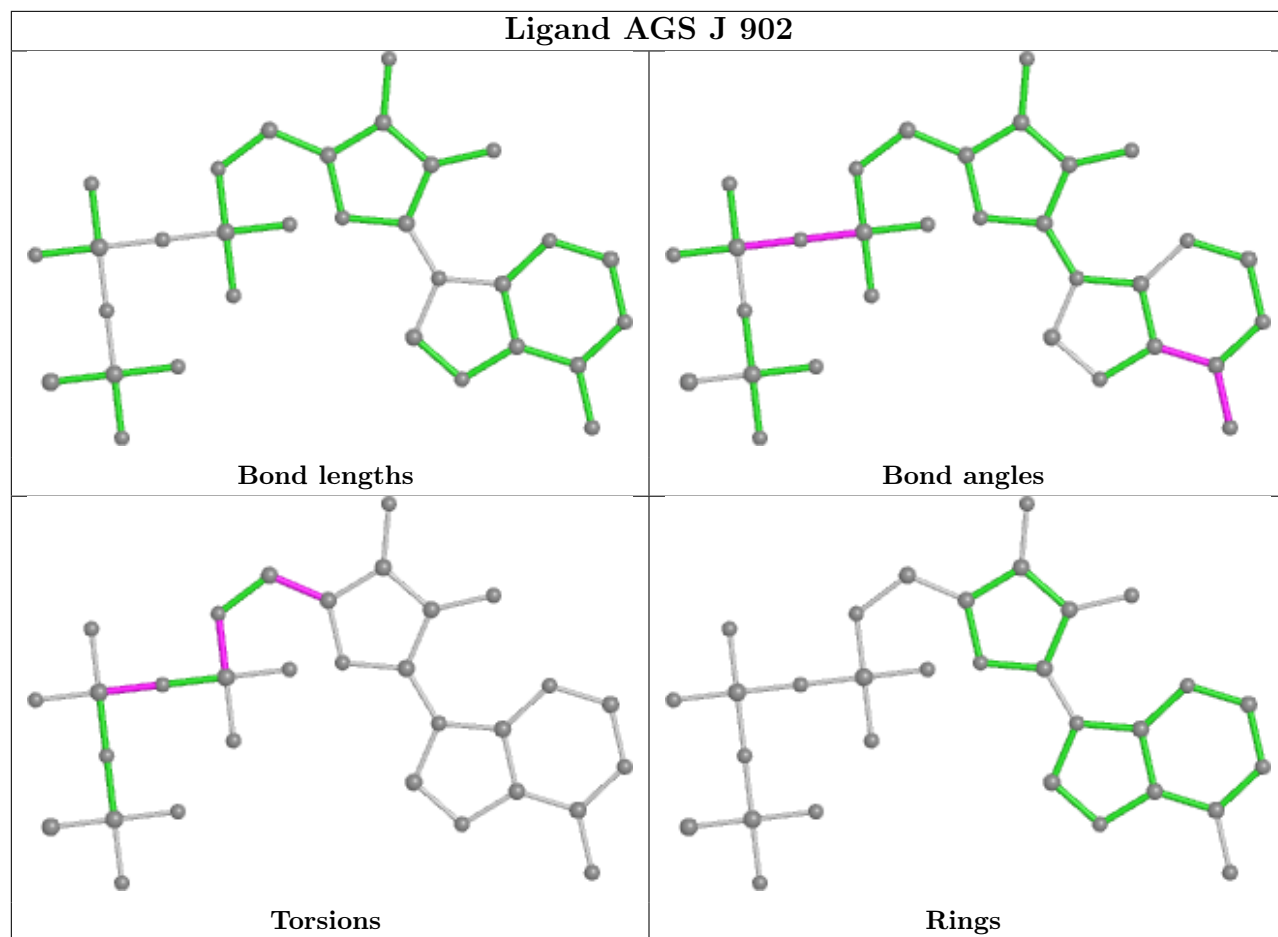
The following is a two-dimensional graphical depiction of Mogul quality analysis of bond lengths, bond angles, torsion angles, and ring geometry for all instances of the Ligand of Interest. In addition, ligands with molecular weight > 250 and outliers as shown on the validation Tables will also be included. For torsion angles, if less than 5% of the Mogul distribution of torsion angles is within 10 degrees of the torsion angle in question, then that torsion angle is considered an outlier. Any bond that is central to one or more torsion angles identified as an outlier by Mogul will be highlighted in the graph. For rings, the root-mean-square deviation (RMSD) between the ring in question and similar rings identified by Mogul is calculated over all ring torsion angles. If the average RMSD is greater than 60 degrees and the minimal RMSD between the ring in question and any Mogul-identified rings is also greater than 60 degrees, then that ring is considered an outlier. The outliers are highlighted in purple. The color gray indicates Mogul did not find sufficient equivalents in the CSD to analyse the geometry.



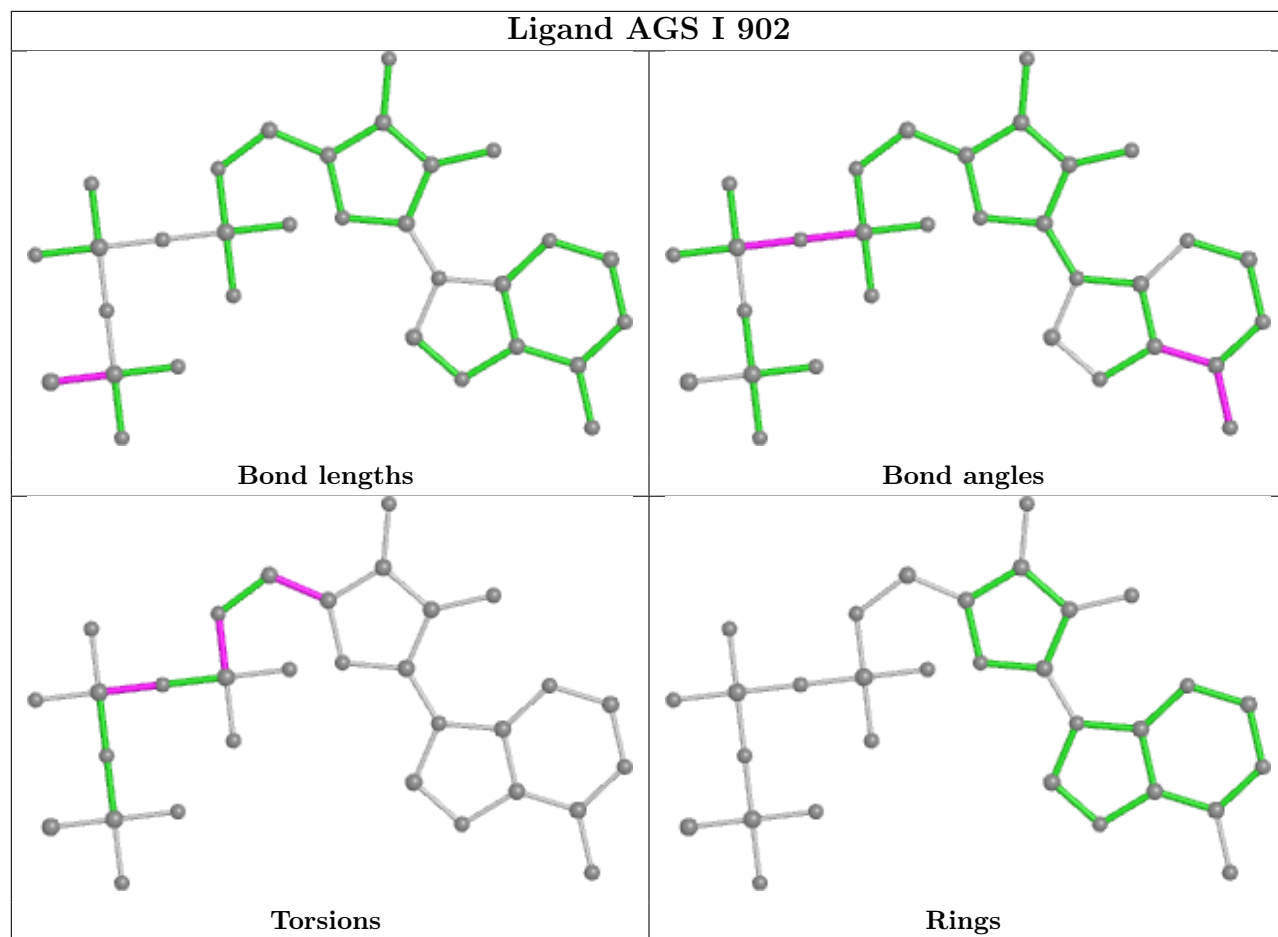


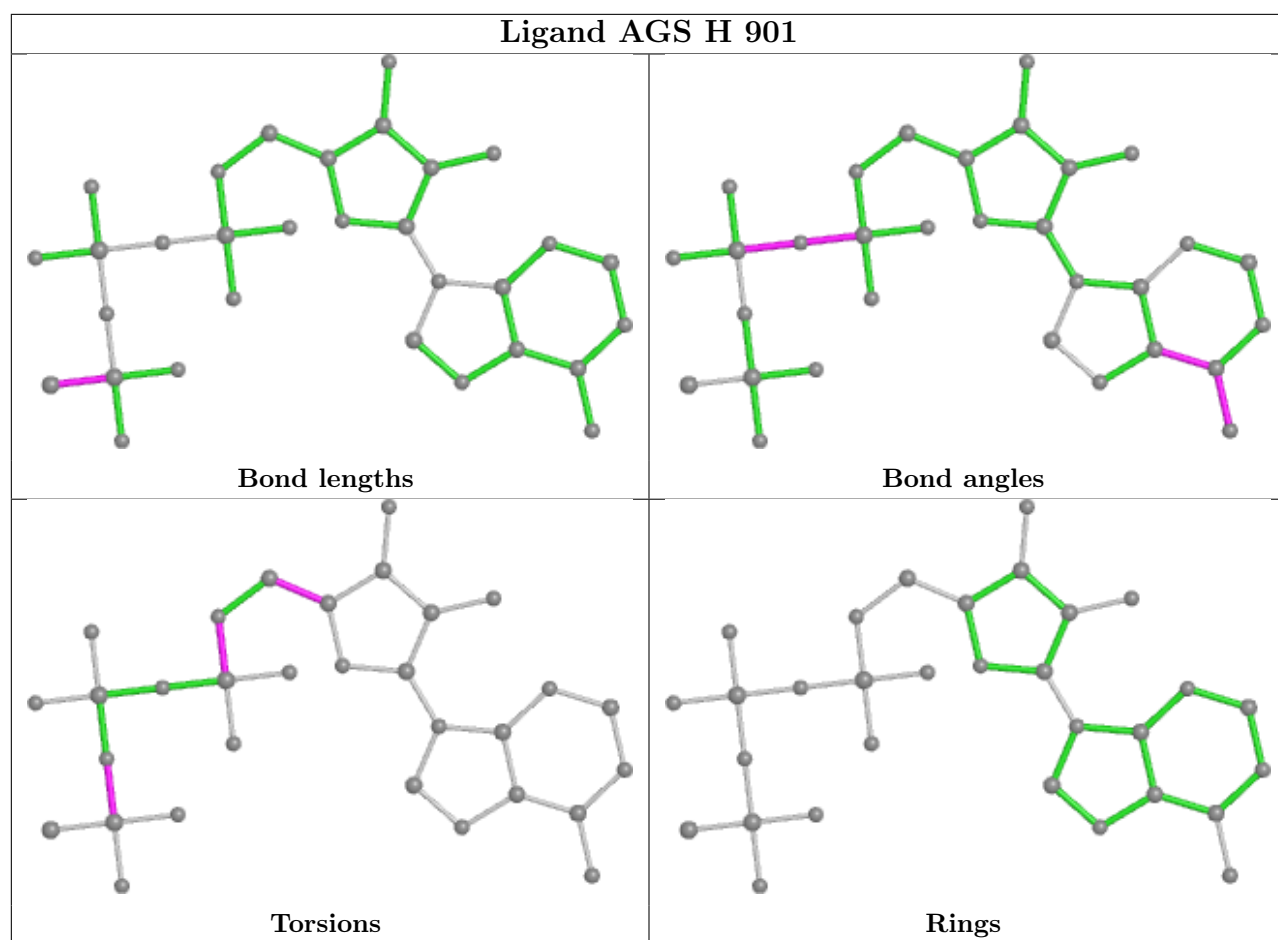


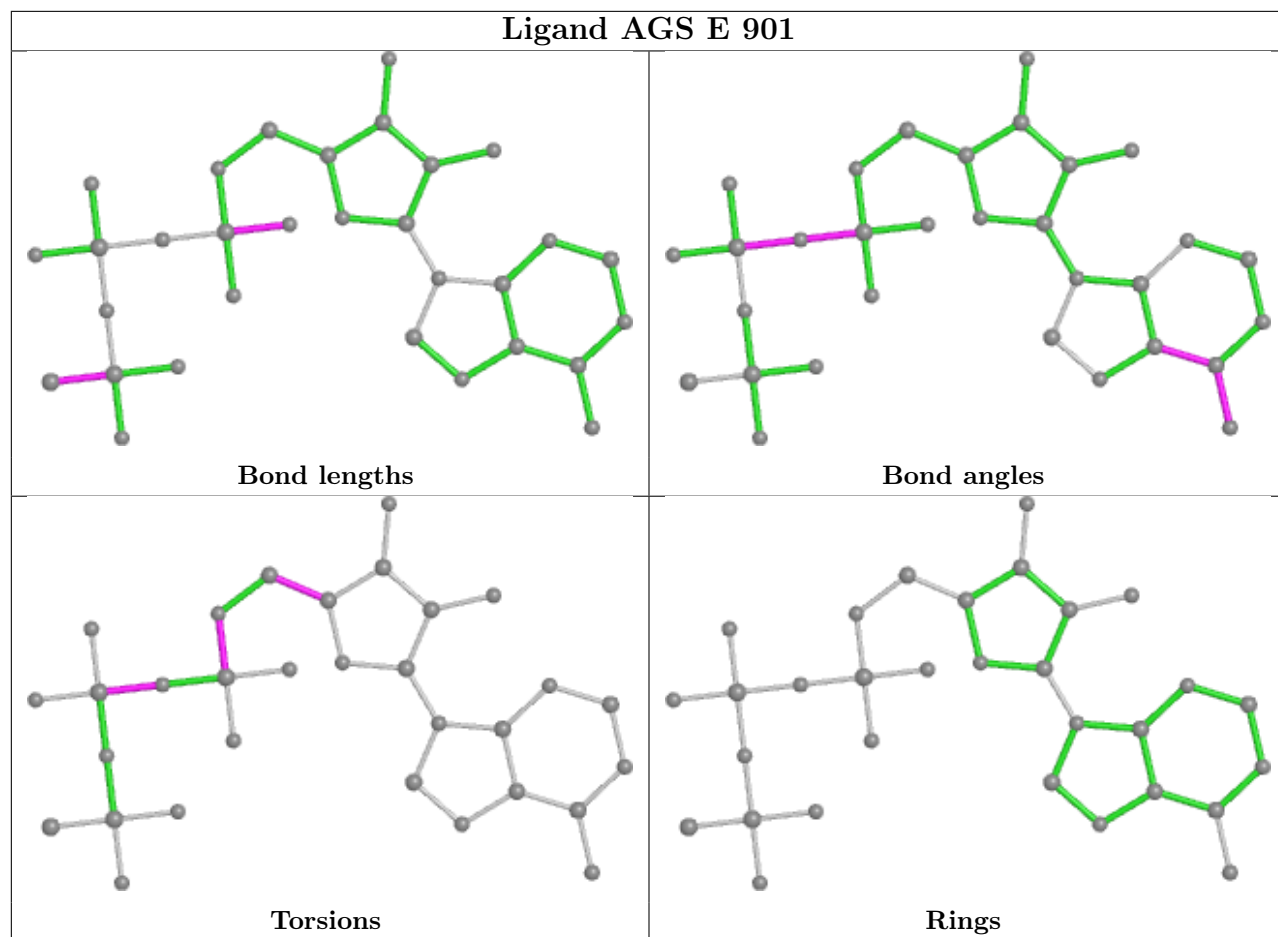


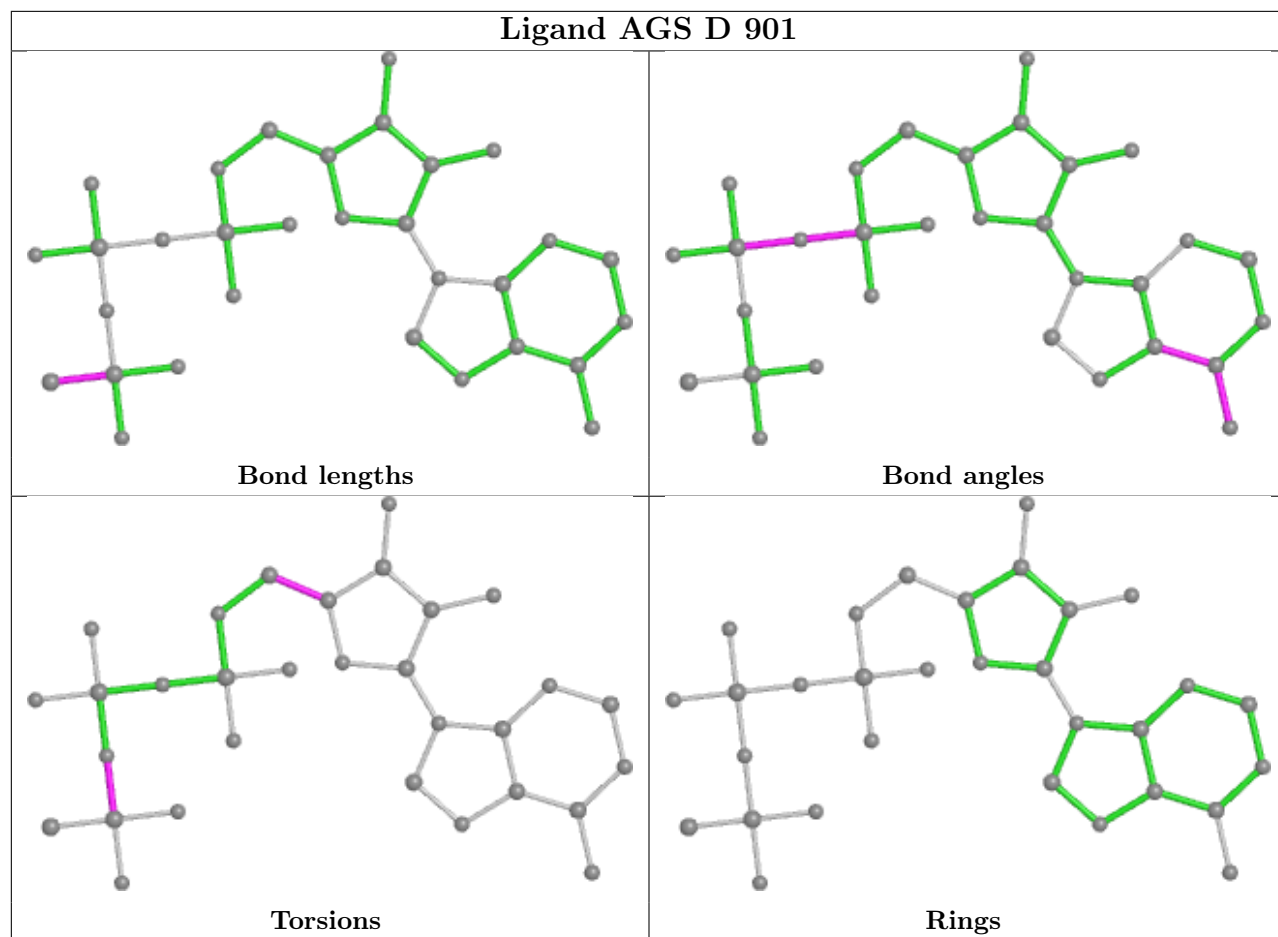


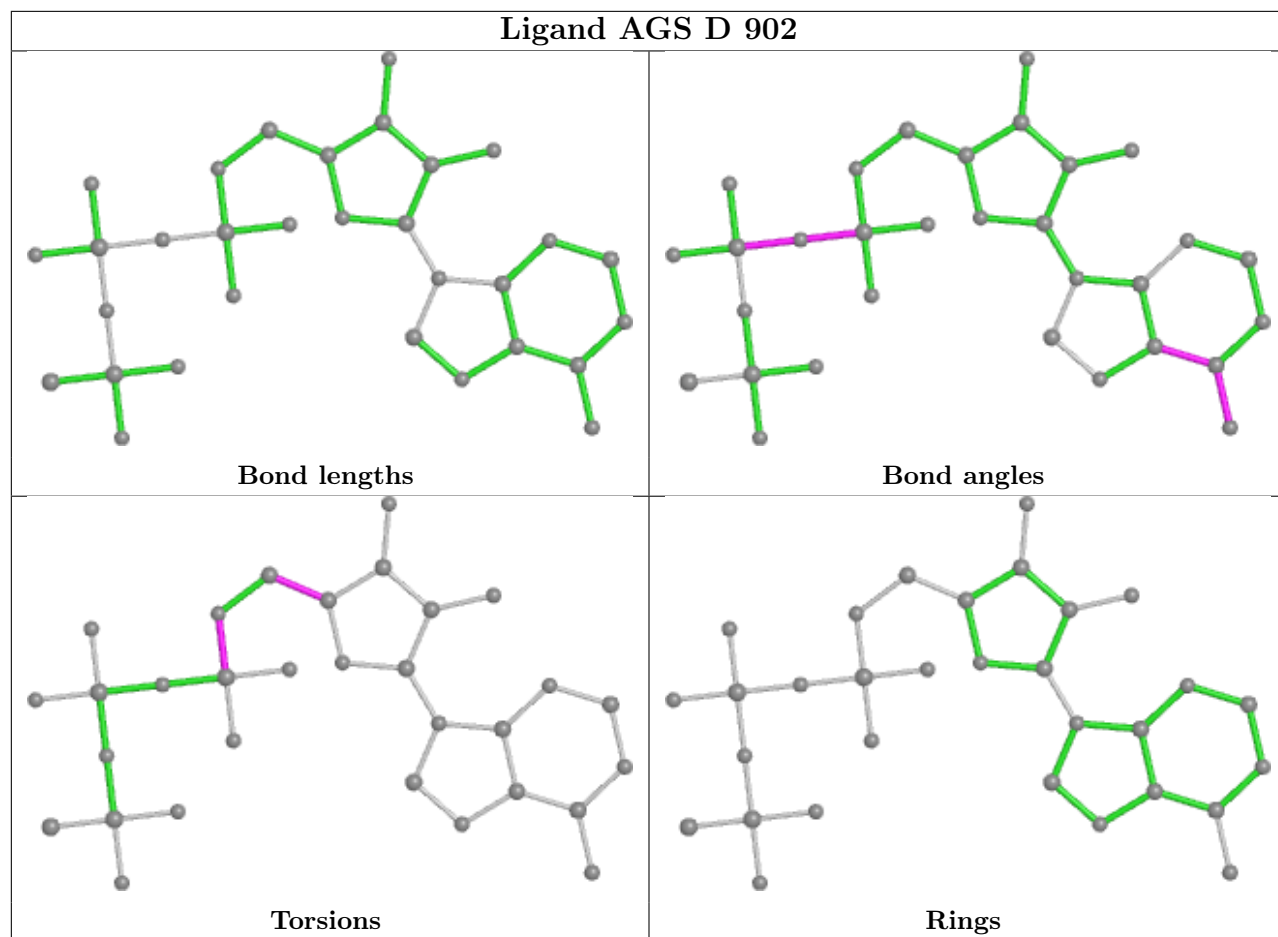


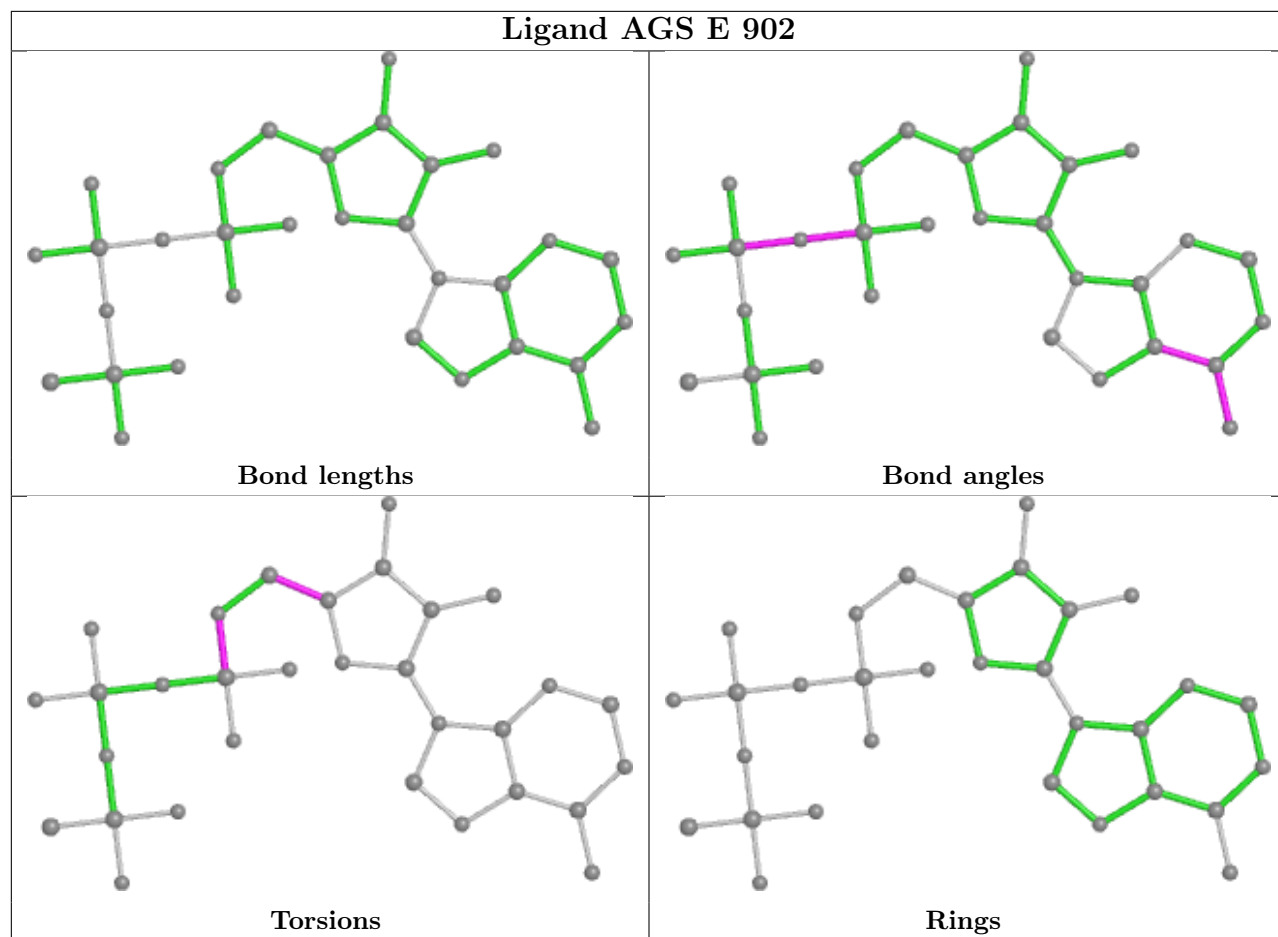


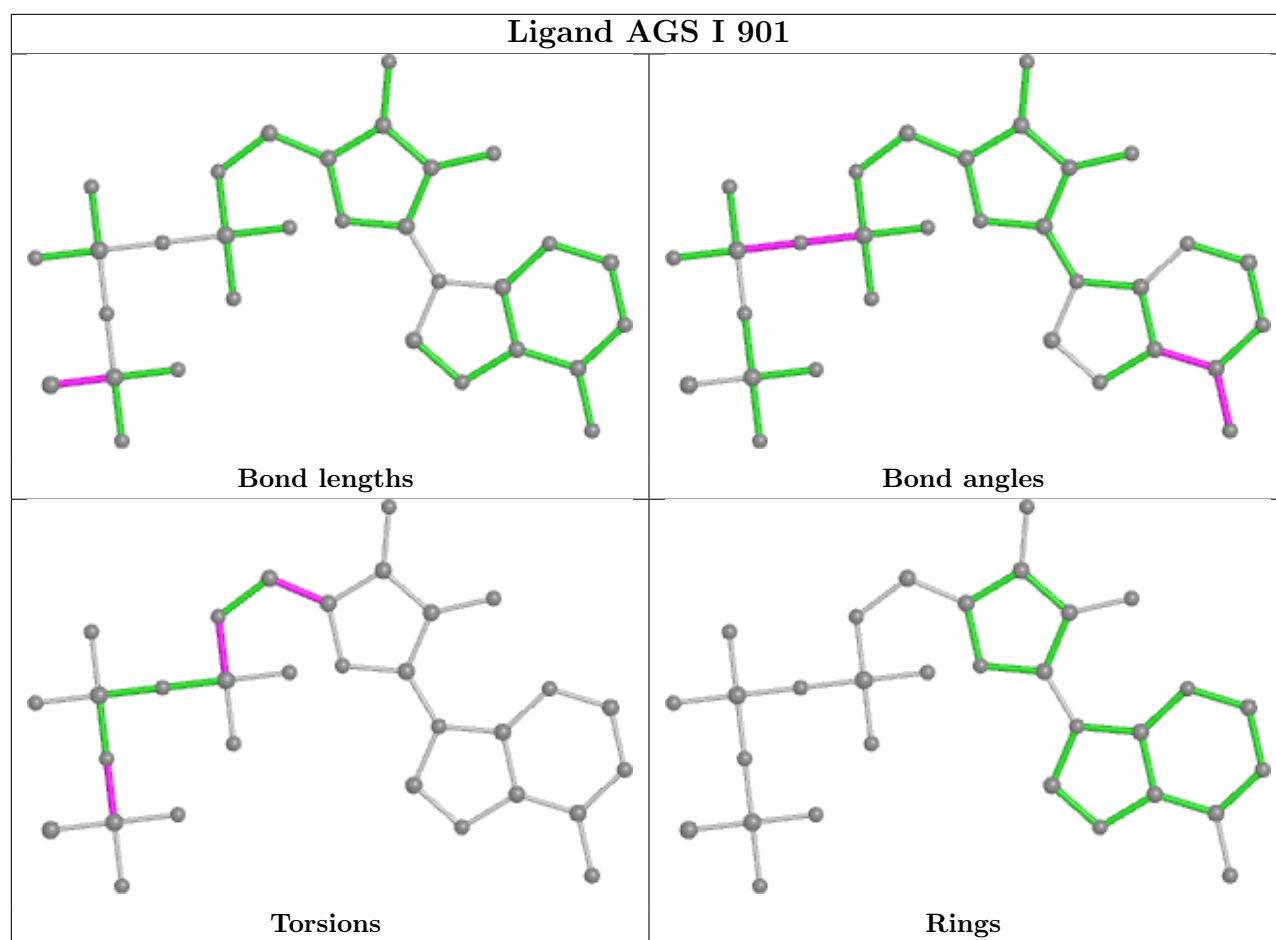












## 5.7 Other polymers [i](#)

There are no such residues in this entry.

## 5.8 Polymer linkage issues [i](#)

There are no chain breaks in this entry.

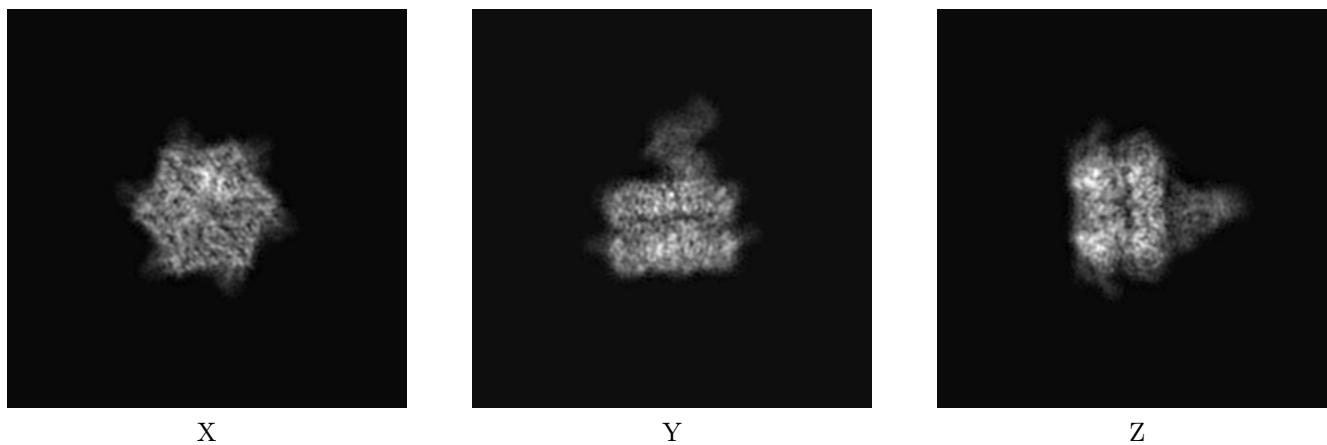
## 6 Map visualisation [i](#)

This section contains visualisations of the EMDB entry EMD-7476. These allow visual inspection of the internal detail of the map and identification of artifacts.

No raw map or half-maps were deposited for this entry and therefore no images, graphs, etc. pertaining to the raw map can be shown.

### 6.1 Orthogonal projections [i](#)

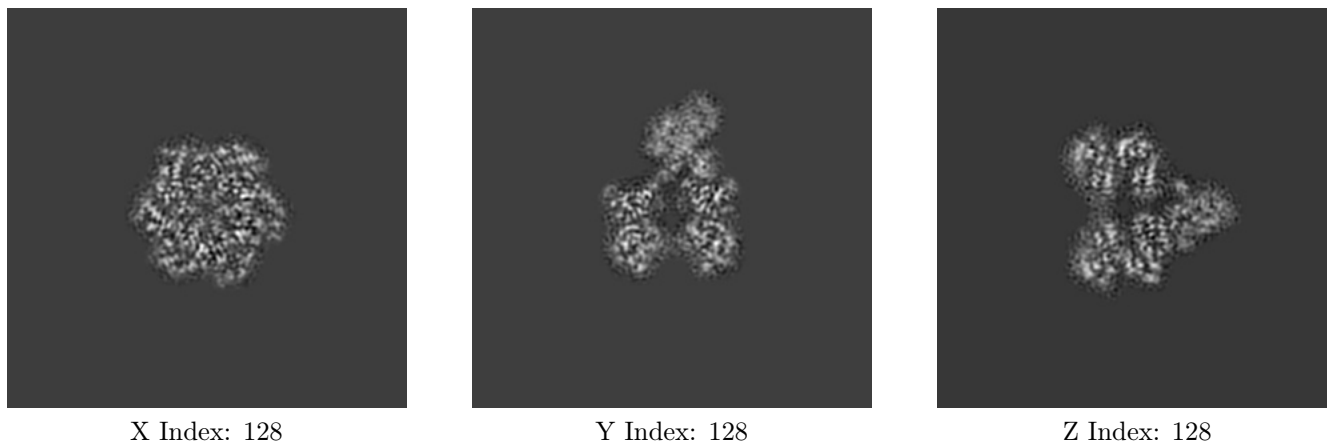
#### 6.1.1 Primary map



The images above show the map projected in three orthogonal directions.

### 6.2 Central slices [i](#)

#### 6.2.1 Primary map

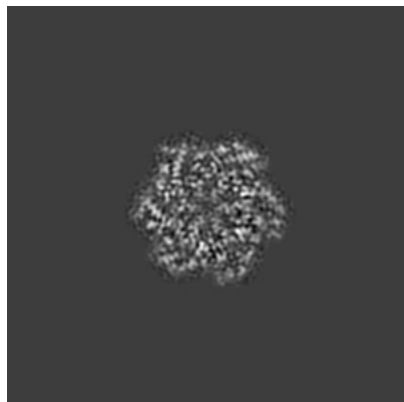




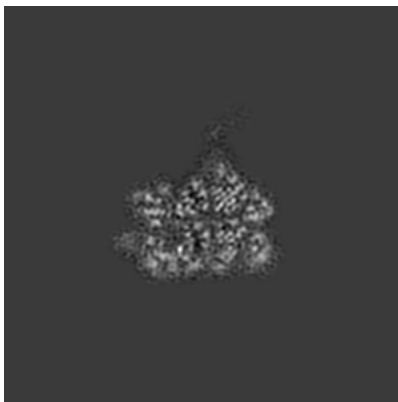
The images above show central slices of the map in three orthogonal directions.

## 6.3 Largest variance slices [i](#)

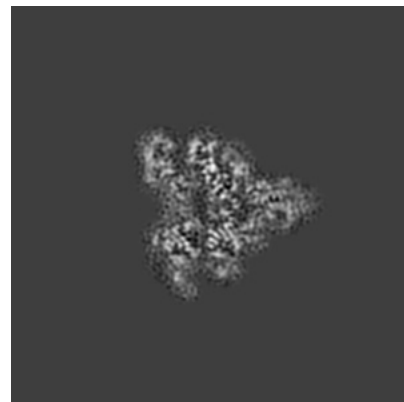
### 6.3.1 Primary map



X Index: 128



Y Index: 146

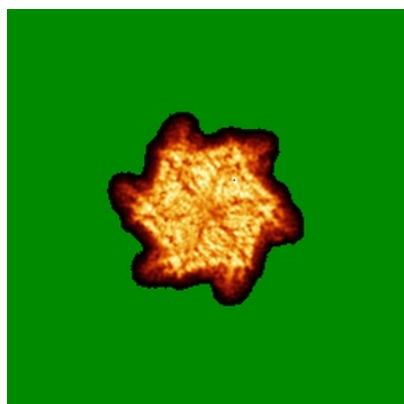


Z Index: 136

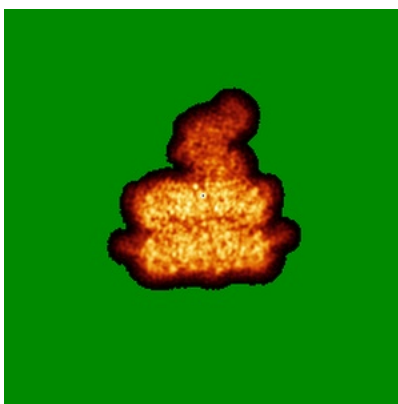
The images above show the largest variance slices of the map in three orthogonal directions.

## 6.4 Orthogonal standard-deviation projections (False-color) [i](#)

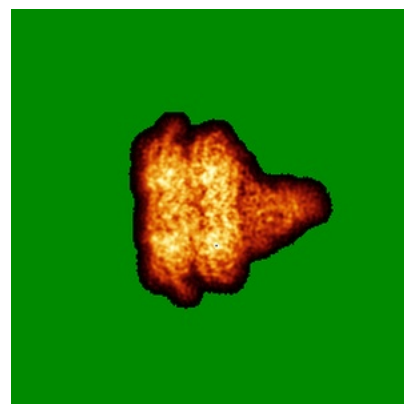
### 6.4.1 Primary map



X



Y

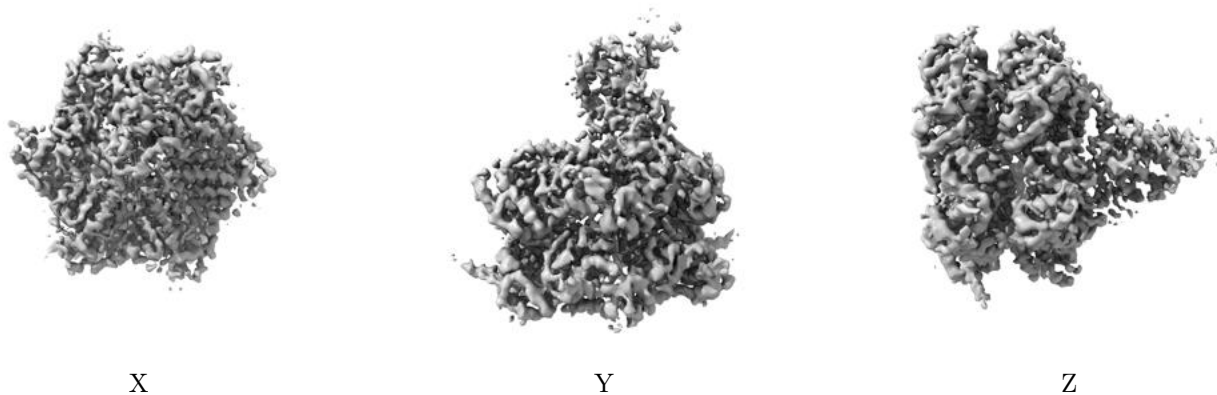


Z

The images above show the map standard deviation projections with false color in three orthogonal directions. Minimum values are shown in green, max in blue, and dark to light orange shades represent small to large values respectively.

## 6.5 Orthogonal surface views [i](#)

### 6.5.1 Primary map



The images above show the 3D surface view of the map at the recommended contour level 0.05. These images, in conjunction with the slice images, may facilitate assessment of whether an appropriate contour level has been provided.

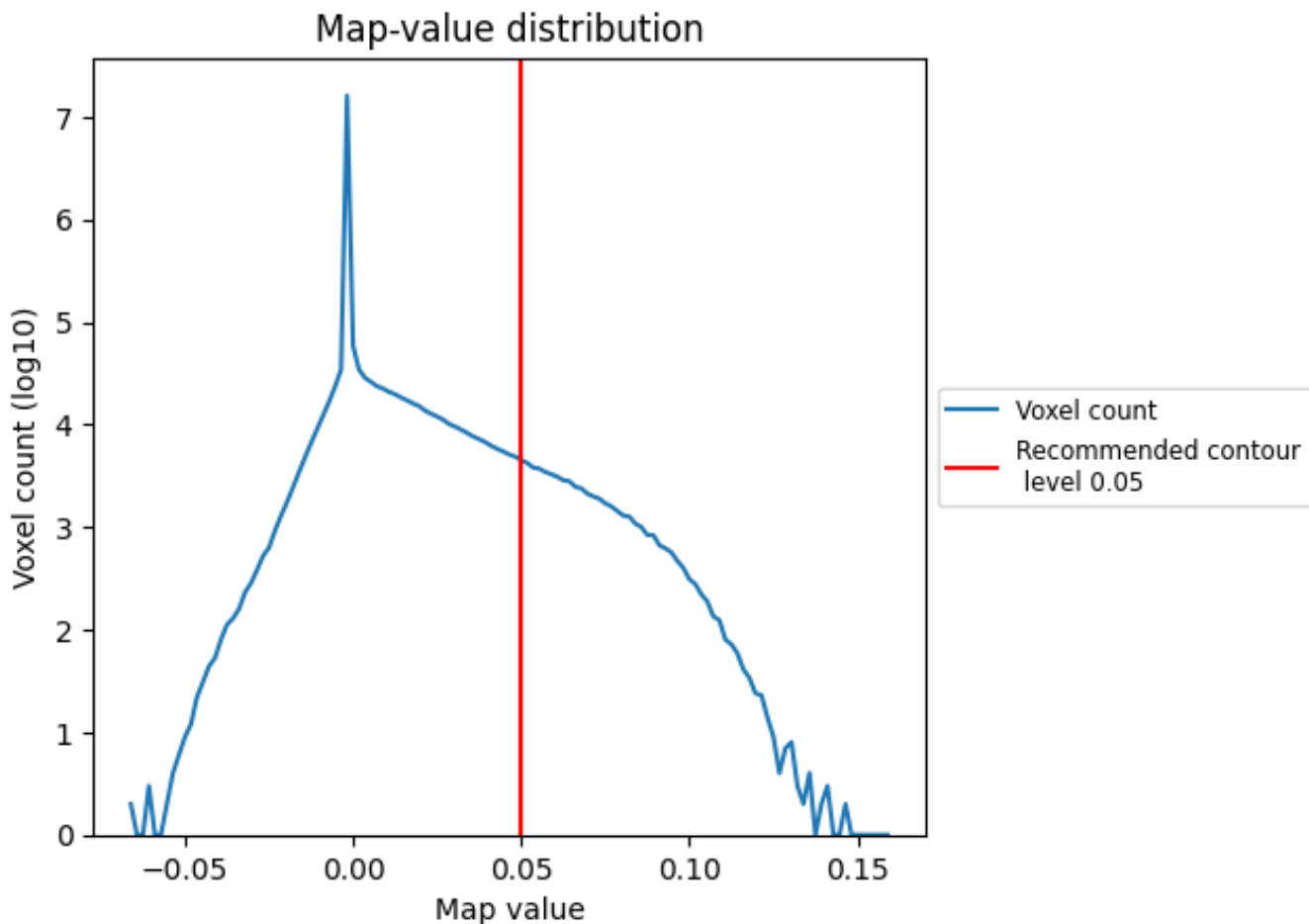
## 6.6 Mask visualisation [i](#)

This section was not generated. No masks/segmentation were deposited.

## 7 Map analysis [i](#)

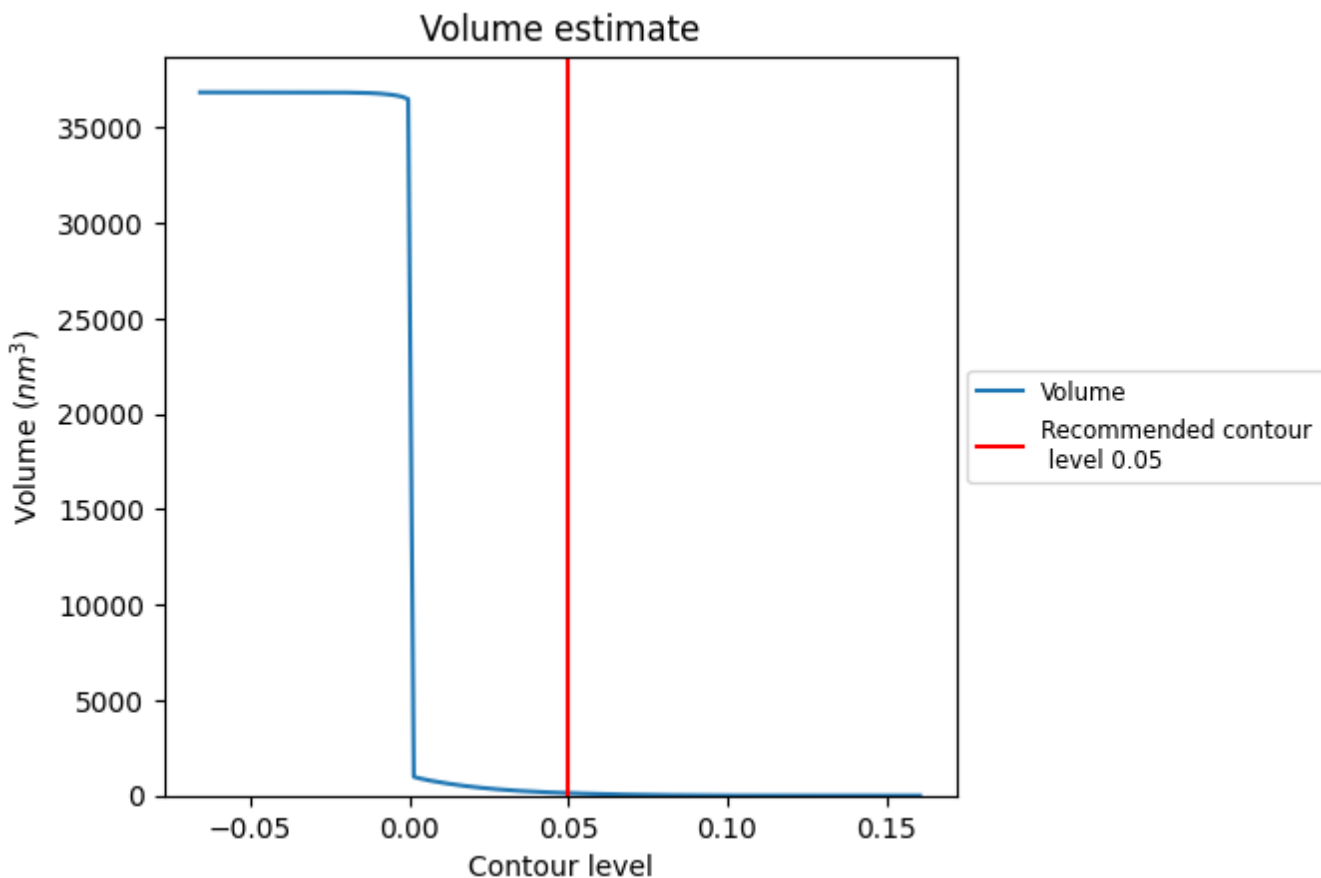
This section contains the results of statistical analysis of the map.

### 7.1 Map-value distribution [i](#)



The map-value distribution is plotted in 128 intervals along the x-axis. The y-axis is logarithmic. A spike in this graph at zero usually indicates that the volume has been masked.

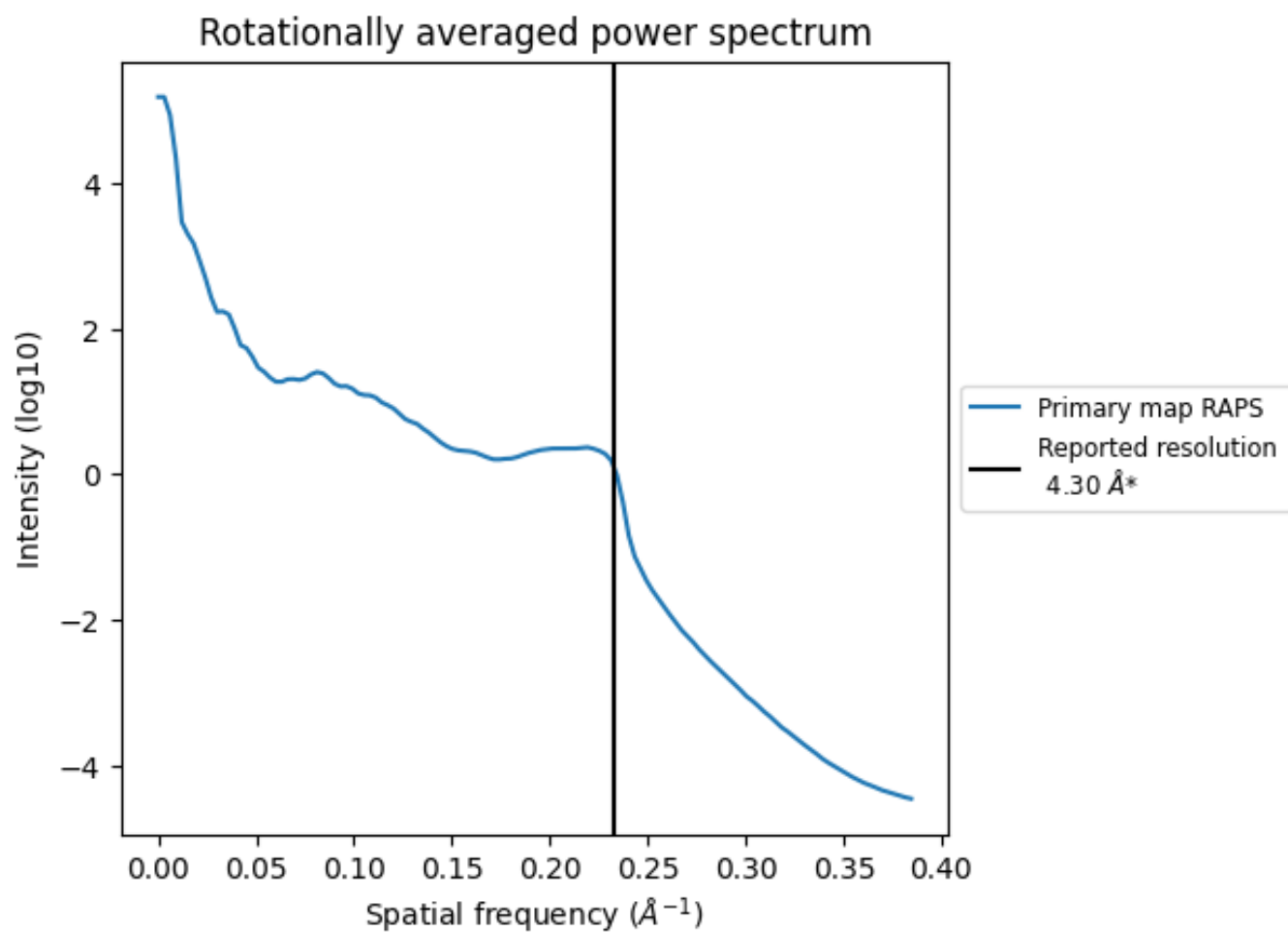
## 7.2 Volume estimate [\(i\)](#)



The volume at the recommended contour level is 128 nm<sup>3</sup>; this corresponds to an approximate mass of 116 kDa.

The volume estimate graph shows how the enclosed volume varies with the contour level. The recommended contour level is shown as a vertical line and the intersection between the line and the curve gives the volume of the enclosed surface at the given level.

### 7.3 Rotationally averaged power spectrum [i](#)

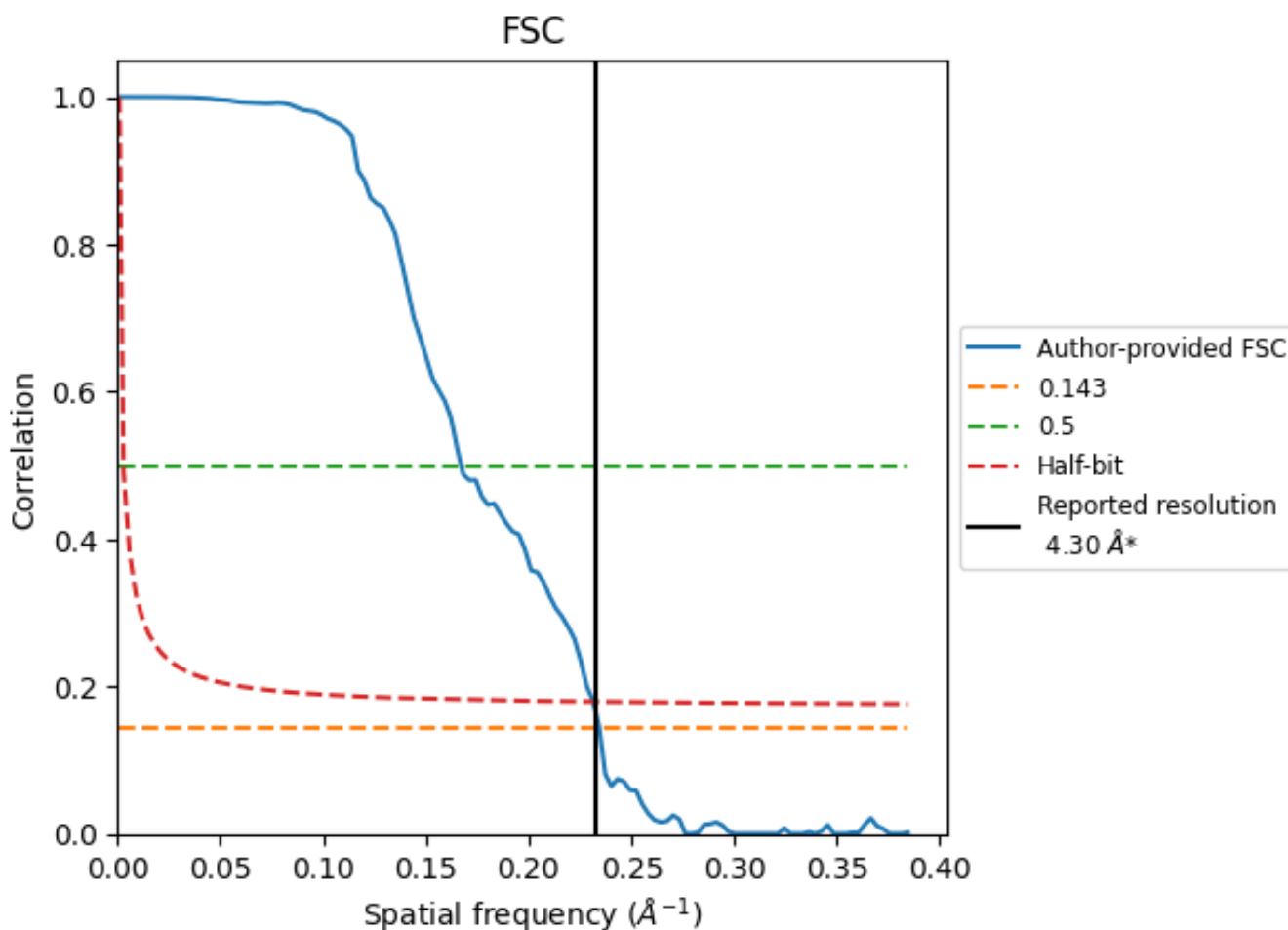


\*Reported resolution corresponds to spatial frequency of  $0.233 \text{\AA}^{-1}$

## 8 Fourier-Shell correlation [i](#)

Fourier-Shell Correlation (FSC) is the most commonly used method to estimate the resolution of single-particle and subtomogram-averaged maps. The shape of the curve depends on the imposed symmetry, mask and whether or not the two 3D reconstructions used were processed from a common reference. The reported resolution is shown as a black line. A curve is displayed for the half-bit criterion in addition to lines showing the 0.143 gold standard cut-off and 0.5 cut-off.

### 8.1 FSC [i](#)



\*Reported resolution corresponds to spatial frequency of 0.233 Å<sup>-1</sup>

## 8.2 Resolution estimates [i](#)

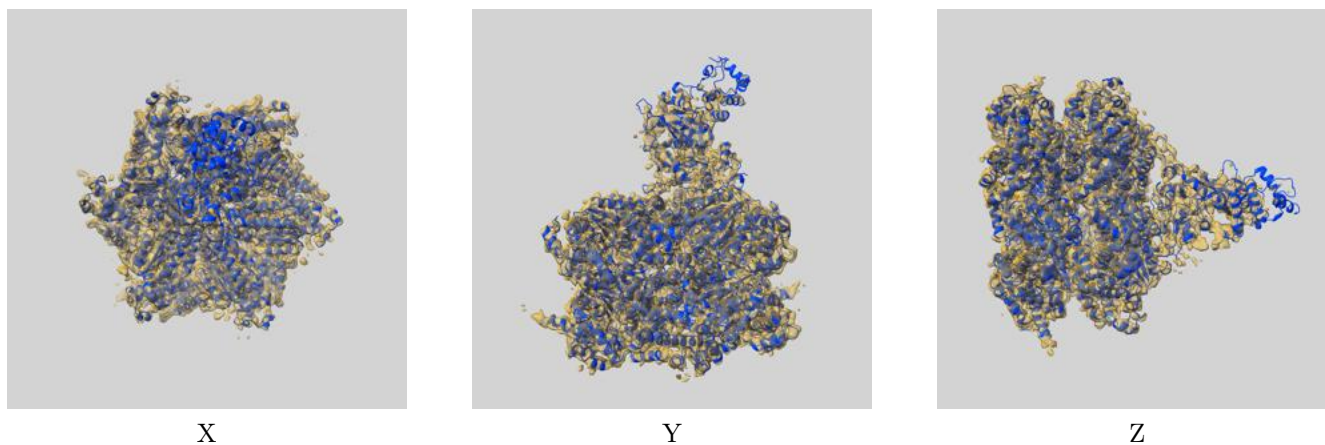
Resolution estimate (Å)	Estimation criterion (FSC cut-off)		
	0.143	0.5	Half-bit
Reported by author	4.30	-	-
Author-provided FSC curve	4.26	5.98	4.32
Unmasked-calculated*	-	-	-

\*Resolution estimate based on FSC curve calculated by comparison of deposited half-maps.

## 9 Map-model fit [i](#)

This section contains information regarding the fit between EMDB map EMD-7476 and PDB model 6CHS. Per-residue inclusion information can be found in section 3 on page 6.

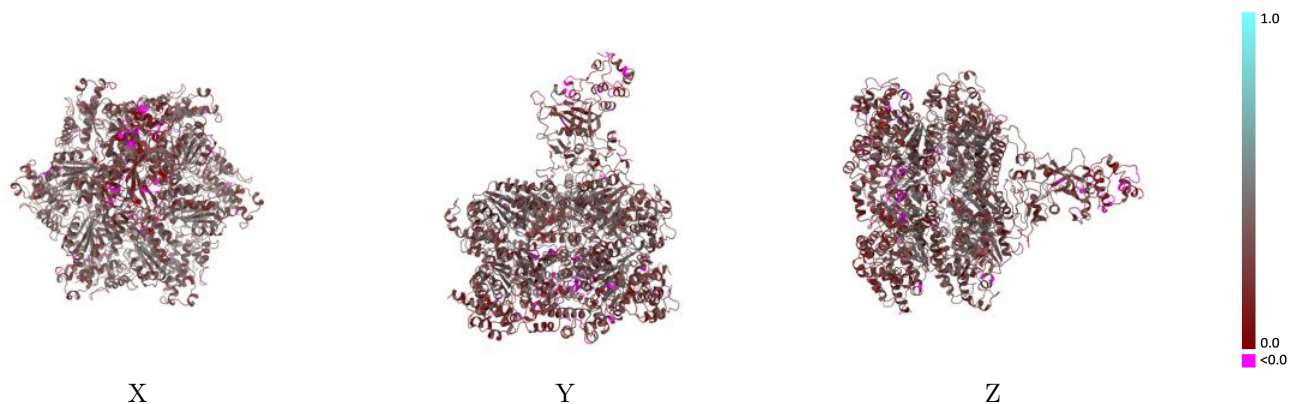
### 9.1 Map-model overlay [i](#)



The images above show the 3D surface view of the map at the recommended contour level 0.05 at 50% transparency in yellow overlaid with a ribbon representation of the model coloured in blue. These images allow for the visual assessment of the quality of fit between the atomic model and the map.

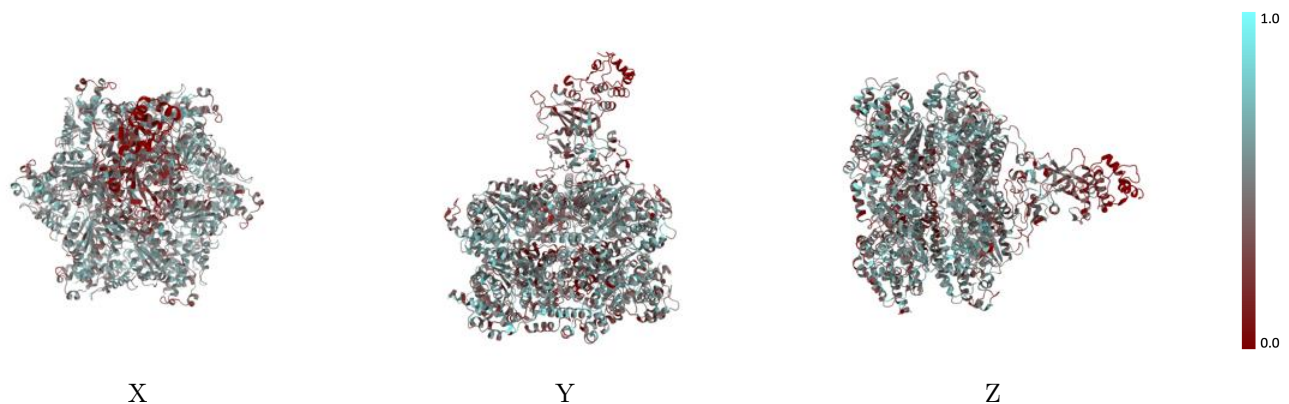


## 9.2 Q-score mapped to coordinate model [i](#)



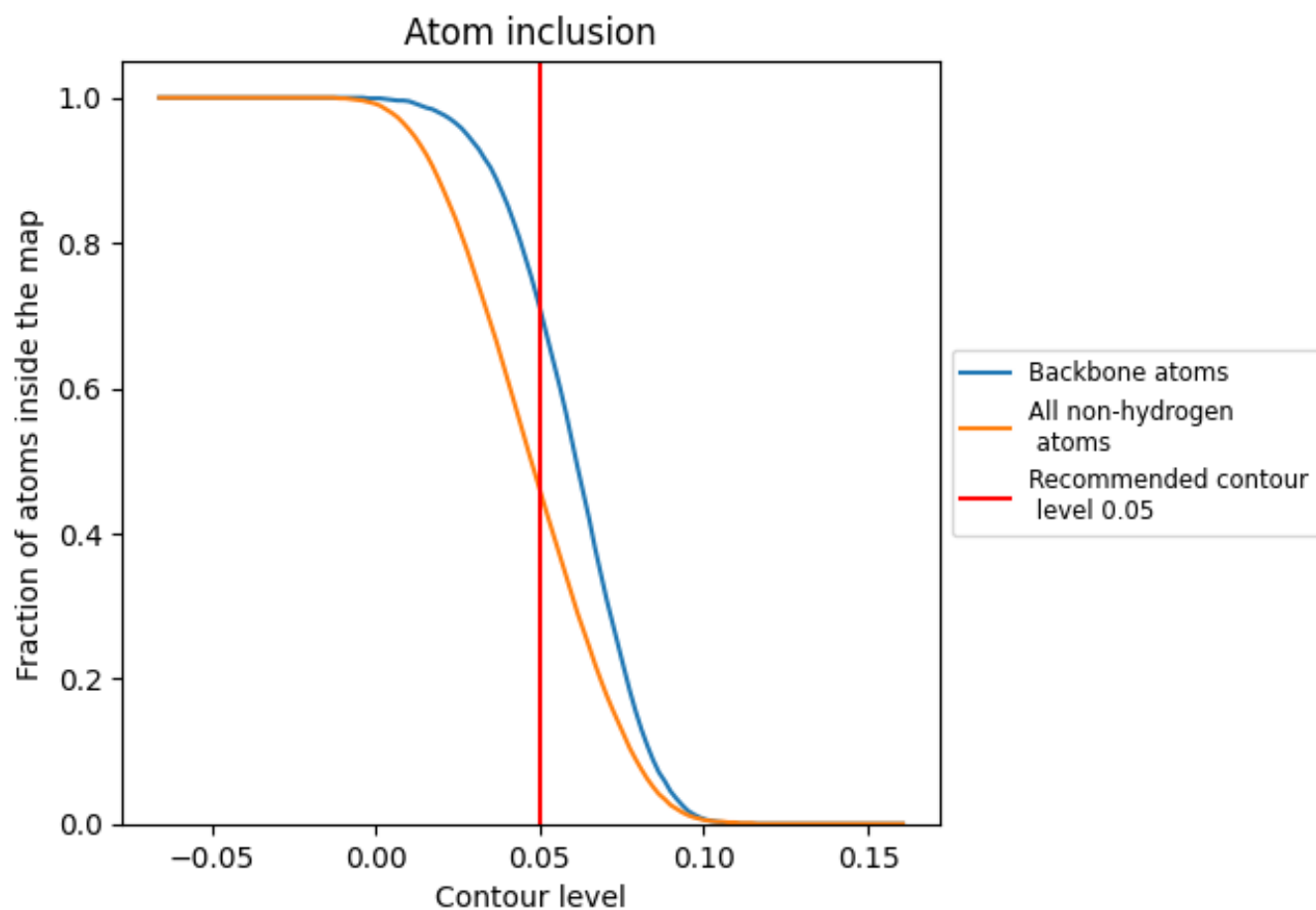
The images above show the model with each residue coloured according to its Q-score. This shows their resolvability in the map with higher Q-score values reflecting better resolvability. Please note: Q-score is calculating the resolvability of atoms, and thus high values are only expected at resolutions at which atoms can be resolved. Low Q-score values may therefore be expected for many entries.

## 9.3 Atom inclusion mapped to coordinate model [i](#)



The images above show the model with each residue coloured according to its atom inclusion. This shows to what extent they are inside the map at the recommended contour level (0.05).

















## 9.4 Atom inclusion [i](#)



At the recommended contour level, 71% of all backbone atoms, 46% of all non-hydrogen atoms, are inside the map.

## 9.5 Map-model fit summary

The table lists the average atom inclusion at the recommended contour level (0.05) and Q-score for the entire model and for each chain.

Chain	Atom inclusion	Q-score
All	 0.4600	 0.2860
A	 0.2940	 0.2370
D	 0.4780	 0.2890
E	 0.4740	 0.2960
F	 0.4860	 0.2890
H	 0.4860	 0.3000
I	 0.4870	 0.2950
J	 0.4860	 0.2880

