



Full wwPDB X-ray Structure Validation Report ⓘ

Jan 23, 2025 – 10:06 AM EST

PDB ID : 9CH0
Title : Structure of the alpha-N-methyltransferase (SonM) and RiPP precursor (SonA-I65W) heteromeric complex (bound to SAH)
Authors : Crone, K.K.; Labonte, J.W.; Elias, M.; Freeman, M.F.
Deposited on : 2024-07-01
Resolution : 2.20 Å(reported)

This is a Full wwPDB X-ray Structure Validation Report for a publicly released PDB entry.

We welcome your comments at validation@mail.wwpdb.org

A user guide is available at

<https://www.wwpdb.org/validation/2017/XrayValidationReportHelp>

with specific help available everywhere you see the ⓘ symbol.

The types of validation reports are described at

<http://www.wwpdb.org/validation/2017/FAQs#types>.

The following versions of software and data (see [references ⓘ](#)) were used in the production of this report:

MolProbity : 4.02b-467
Mogul : 2022.3.0, CSD as543be (2022)
Xtriage (Phenix) : 1.21
EDS : 3.0
buster-report : 1.1.7 (2018)
Percentile statistics : 20231227.v01 (using entries in the PDB archive December 27th 2023)
CCP4 : 9.0.004 (Gargrove)
Density-Fitness : 1.0.11
Ideal geometry (proteins) : Engh & Huber (2001)
Ideal geometry (DNA, RNA) : Parkinson et al. (1996)
Validation Pipeline (wwPDB-VP) : 2.40

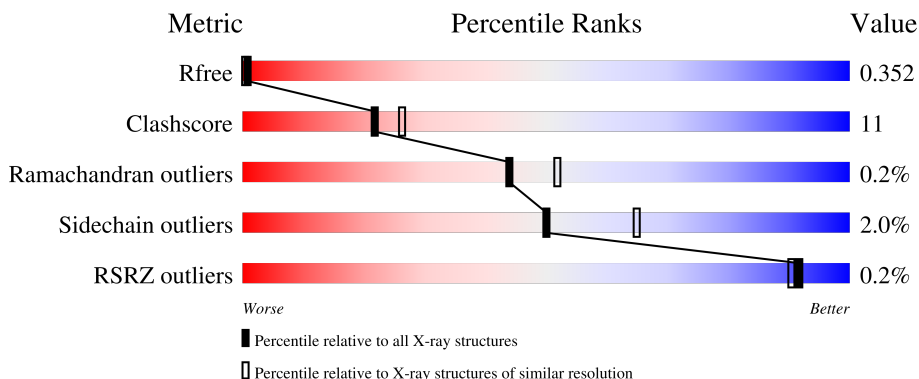
1 Overall quality at a glance i

The following experimental techniques were used to determine the structure:

X-RAY DIFFRACTION

The reported resolution of this entry is 2.20 Å.

Percentile scores (ranging between 0-100) for global validation metrics of the entry are shown in the following graphic. The table shows the number of entries on which the scores are based.






Metric	Whole archive (#Entries)	Similar resolution (#Entries, resolution range(Å))
R_{free}	164625	5791 (2.20-2.20)
Clashscore	180529	6634 (2.20-2.20)
Ramachandran outliers	177936	6560 (2.20-2.20)
Sidechain outliers	177891	6561 (2.20-2.20)
RSRZ outliers	164620	5791 (2.20-2.20)

The table below summarises the geometric issues observed across the polymeric chains and their fit to the electron density. The red, orange, yellow and green segments of the lower bar indicate the fraction of residues that contain outliers for ≥ 3 , 2, 1 and 0 types of geometric quality criteria respectively. A grey segment represents the fraction of residues that are not modelled. The numeric value for each fraction is indicated below the corresponding segment, with a dot representing fractions $\leq 5\%$. The upper red bar (where present) indicates the fraction of residues that have poor fit to the electron density. The numeric value is given above the bar.

Mol	Chain	Length	Quality of chain
1	A	263	76% (green), 23% (yellow)
1	C	263	76% (green), 23% (yellow), 1% (orange)
1	H	263	79% (green), 20% (yellow), 1% (orange)
1	J	263	79% (green), 20% (yellow)
2	B	78	51% (green), 17% (yellow), 6% (orange), 26% (grey)

Continued on next page...

Continued from previous page...

Mol	Chain	Length	Quality of chain
2	D	78	
3	I	78	
3	K	78	

The following table lists non-polymeric compounds, carbohydrate monomers and non-standard residues in protein, DNA, RNA chains that are outliers for geometric or electron-density-fit criteria:

Mol	Type	Chain	Res	Chirality	Geometry	Clashes	Electron density
2	MLE	B	63	-	-	X	-

2 Entry composition

There are 6 unique types of molecules in this entry. The entry contains 10132 atoms, of which 0 are hydrogens and 0 are deuteriums.

In the tables below, the ZeroOcc column contains the number of atoms modelled with zero occupancy, the AltConf column contains the number of residues with at least one atom in alternate conformation and the Trace column contains the number of residues modelled with at most 2 atoms.

- Molecule 1 is a protein called TP-methylase family protein.

Mol	Chain	Residues	Atoms					ZeroOcc	AltConf	Trace
			Total	C	N	O	S			
1	A	262	Total	C	N	O	S	0	0	0
			2039	1307	350	373	9			
1	C	262	Total	C	N	O	S	0	0	0
			2039	1307	350	373	9			
1	H	262	Total	C	N	O	S	0	0	0
			2039	1307	350	373	9			
1	J	262	Total	C	N	O	S	0	0	0
			2039	1307	350	373	9			

- Molecule 2 is a protein called Extradial ring-cleavage dioxygenase LigAB LigA subunit domain-containing protein.

Mol	Chain	Residues	Atoms					ZeroOcc	AltConf	Trace
			Total	C	N	O	S			
2	B	58	Total	C	N	O	S	0	0	0
			462	290	76	92	4			
2	D	49	Total	C	N	O	S	0	0	0
			386	238	64	80	4			

There are 16 discrepancies between the modelled and reference sequences:

Chain	Residue	Modelled	Actual	Comment	Reference
B	-6	MET	-	initiating methionine	UNP Q8EGW2
B	-5	HIS	-	expression tag	UNP Q8EGW2
B	-4	HIS	-	expression tag	UNP Q8EGW2
B	-3	HIS	-	expression tag	UNP Q8EGW2
B	-2	HIS	-	expression tag	UNP Q8EGW2
B	-1	HIS	-	expression tag	UNP Q8EGW2
B	0	HIS	-	expression tag	UNP Q8EGW2
B	65	TRP	ILE	engineered mutation	UNP Q8EGW2
D	-6	MET	-	initiating methionine	UNP Q8EGW2
D	-5	HIS	-	expression tag	UNP Q8EGW2
D	-4	HIS	-	expression tag	UNP Q8EGW2

Continued on next page...

Continued from previous page...

Chain	Residue	Modelled	Actual	Comment	Reference
D	-3	HIS	-	expression tag	UNP Q8EGW2
D	-2	HIS	-	expression tag	UNP Q8EGW2
D	-1	HIS	-	expression tag	UNP Q8EGW2
D	0	HIS	-	expression tag	UNP Q8EGW2
D	65	TRP	ILE	engineered mutation	UNP Q8EGW2

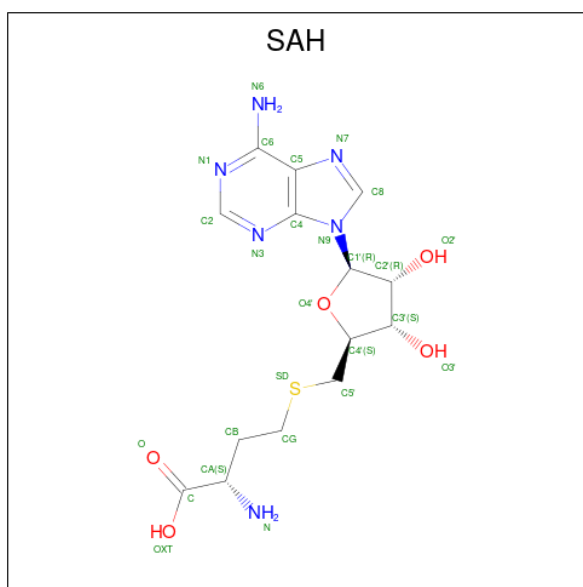
- Molecule 3 is a protein called Extradiol ring-cleavage dioxygenase LigAB LigA subunit domain-containing protein.

Mol	Chain	Residues	Atoms					ZeroOcc	AltConf	Trace
			Total	C	N	O	S			
3	I	55	433	271	71	87	4	0	0	0
3	K	53	419	261	68	86	4	0	0	0

There are 16 discrepancies between the modelled and reference sequences:

Chain	Residue	Modelled	Actual	Comment	Reference
I	-6	MET	-	initiating methionine	UNP Q8EGW2
I	-5	HIS	-	expression tag	UNP Q8EGW2
I	-4	HIS	-	expression tag	UNP Q8EGW2
I	-3	HIS	-	expression tag	UNP Q8EGW2
I	-2	HIS	-	expression tag	UNP Q8EGW2
I	-1	HIS	-	expression tag	UNP Q8EGW2
I	0	HIS	-	expression tag	UNP Q8EGW2
I	65	TRP	ILE	engineered mutation	UNP Q8EGW2
K	-6	MET	-	initiating methionine	UNP Q8EGW2
K	-5	HIS	-	expression tag	UNP Q8EGW2
K	-4	HIS	-	expression tag	UNP Q8EGW2
K	-3	HIS	-	expression tag	UNP Q8EGW2
K	-2	HIS	-	expression tag	UNP Q8EGW2
K	-1	HIS	-	expression tag	UNP Q8EGW2
K	0	HIS	-	expression tag	UNP Q8EGW2
K	65	TRP	ILE	engineered mutation	UNP Q8EGW2

- Molecule 4 is S-ADENOSYL-L-HOMOCYSTEINE (three-letter code: SAH) (formula: $C_{14}H_{20}N_6O_5S$) (labeled as "Ligand of Interest" by depositor).



Mol	Chain	Residues	Atoms					ZeroOcc	AltConf
4	A	1	Total	C	N	O	S	0	0
			26	14	6	5	1		
4	C	1	Total	C	N	O	S	0	0
			26	14	6	5	1		
4	H	1	Total	C	N	O	S	0	0
			26	14	6	5	1		
4	J	1	Total	C	N	O	S	0	0
			26	14	6	5	1		

- Molecule 5 is ZINC ION (three-letter code: ZN) (formula: Zn) (labeled as "Ligand of Interest" by depositor).

Mol	Chain	Residues	Atoms		ZeroOcc	AltConf
5	A	1	Total	Zn	0	0
			1	1		
5	H	1	Total	Zn	0	0
			1	1		

- Molecule 6 is water.

Mol	Chain	Residues	Atoms		ZeroOcc	AltConf
6	A	28	Total	O	0	0
			28	28		
6	B	6	Total	O	0	0
			6	6		
6	C	34	Total	O	0	0
			34	34		

Continued on next page...

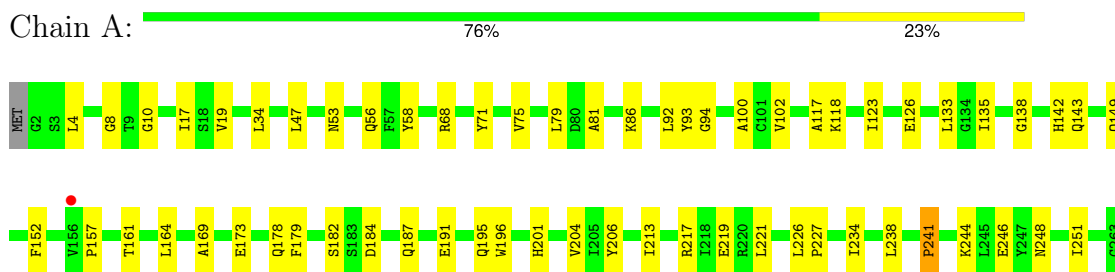
Continued from previous page...

Mol	Chain	Residues	Atoms	ZeroOcc	AltConf
6	D	13	Total O 13 13	0	0
6	H	38	Total O 38 38	0	0
6	I	7	Total O 7 7	0	0
6	J	38	Total O 38 38	0	0
6	K	6	Total O 6 6	0	0

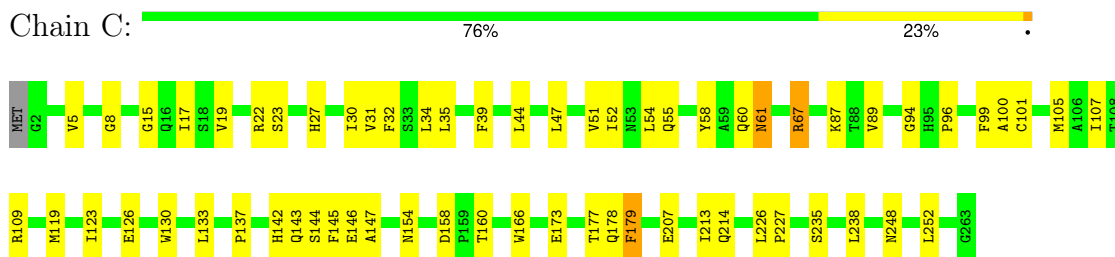
3 Residue-property plots [i](#)

These plots are drawn for all protein, RNA, DNA and oligosaccharide chains in the entry. The first graphic for a chain summarises the proportions of the various outlier classes displayed in the second graphic. The second graphic shows the sequence view annotated by issues in geometry and electron density. Residues are color-coded according to the number of geometric quality criteria for which they contain at least one outlier: green = 0, yellow = 1, orange = 2 and red = 3 or more. A red dot above a residue indicates a poor fit to the electron density ($RSRZ > 2$). Stretches of 2 or more consecutive residues without any outlier are shown as a green connector. Residues present in the sample, but not in the model, are shown in grey.

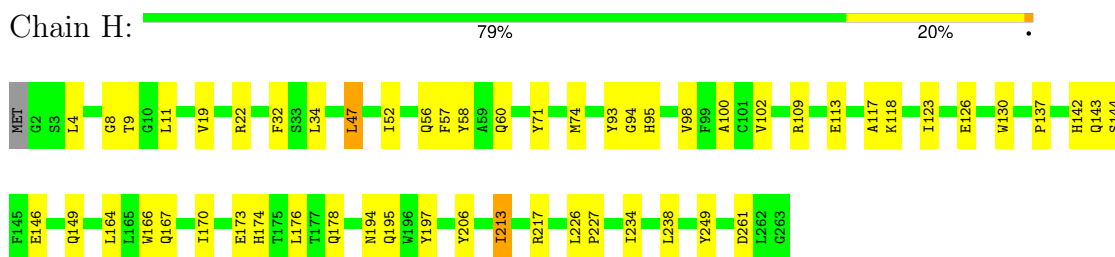
- Molecule 1: TP-methylase family protein



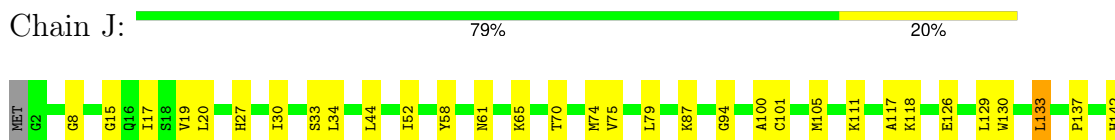
- Molecule 1: TP-methylase family protein

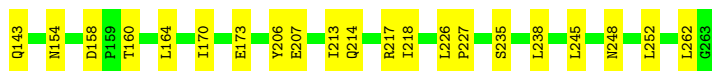


- Molecule 1: TP-methylase family protein

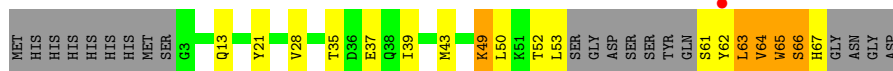


- Molecule 1: TP-methylase family protein





- Molecule 2: Extradiol ring-cleavage dioxygenase LigAB LigA subunit domain-containing protein



- Molecule 2: Extradiol ring-cleavage dioxygenase LigAB LigA subunit domain-containing protein



- Molecule 3: Extradiol ring-cleavage dioxygenase LigAB LigA subunit domain-containing protein



- Molecule 3: Extradiol ring-cleavage dioxygenase LigAB LigA subunit domain-containing protein



4 Data and refinement statistics i

Property	Value	Source
Space group	P 1	Depositor
Cell constants a, b, c, α , β , γ	52.13Å 108.02Å 58.59Å 90.01° 93.41° 89.95°	Depositor
Resolution (Å)	19.84 – 2.20 19.84 – 2.20	Depositor EDS
% Data completeness (in resolution range)	86.8 (19.84-2.20) 97.3 (19.84-2.20)	Depositor EDS
R_{merge}	(Not available)	Depositor
R_{sym}	(Not available)	Depositor
$\langle I/\sigma(I) \rangle$ ¹	3.67 (at 2.19Å)	Xtrriage
Refinement program	REFMAC 5.8.0419	Depositor
R, R_{free}	0.292 , 0.327 0.323 , 0.352	Depositor DCC
R_{free} test set	3062 reflections (4.85%)	wwPDB-VP
Wilson B-factor (Å ²)	20.0	Xtrriage
Anisotropy	0.088	Xtrriage
Bulk solvent k_{sol} (e/Å ³), B_{sol} (Å ²)	0.35 , 8.5	EDS
L-test for twinning ²	$\langle L \rangle = 0.64$, $\langle L^2 \rangle = 0.50$	Xtrriage
Estimated twinning fraction	0.137 for -h,k,-l	Xtrriage
F_o, F_c correlation	0.91	EDS
Total number of atoms	10132	wwPDB-VP
Average B, all atoms (Å ²)	27.0	wwPDB-VP

Xtrriage's analysis on translational NCS is as follows: *The analyses of the Patterson function reveals a significant off-origin peak that is 62.63 % of the origin peak, indicating pseudo-translational symmetry. The chance of finding a peak of this or larger height randomly in a structure without pseudo-translational symmetry is equal to 1.0947e-05. The detected translational NCS is most likely also responsible for the elevated intensity ratio.*

¹Intensities estimated from amplitudes.

²Theoretical values of $\langle |L| \rangle$, $\langle L^2 \rangle$ for acentric reflections are 0.5, 0.333 respectively for untwinned datasets, and 0.375, 0.2 for perfectly twinned datasets.

5 Model quality

5.1 Standard geometry

Bond lengths and bond angles in the following residue types are not validated in this section: SAH, MLE, ZN

The Z score for a bond length (or angle) is the number of standard deviations the observed value is removed from the expected value. A bond length (or angle) with $|Z| > 5$ is considered an outlier worth inspection. RMSZ is the root-mean-square of all Z scores of the bond lengths (or angles).

Mol	Chain	Bond lengths		Bond angles	
		RMSZ	# Z >5	RMSZ	# Z >5
1	A	0.28	0/2090	0.54	0/2846
1	C	0.28	0/2090	0.55	0/2846
1	H	0.28	0/2090	0.56	0/2846
1	J	0.28	0/2090	0.53	0/2846
2	B	0.30	0/459	0.53	0/615
2	D	0.27	0/390	0.55	0/523
3	I	0.28	0/438	0.55	0/588
3	K	0.29	0/423	0.53	0/567
All	All	0.28	0/10070	0.54	0/13677

Chiral center outliers are detected by calculating the chiral volume of a chiral center and verifying if the center is modelled as a planar moiety or with the opposite hand. A planarity outlier is detected by checking planarity of atoms in a peptide group, atoms in a mainchain group or atoms of a sidechain that are expected to be planar.

Mol	Chain	#Chirality outliers	#Planarity outliers
1	C	0	1

There are no bond length outliers.

There are no bond angle outliers.

There are no chirality outliers.

All (1) planarity outliers are listed below:

Mol	Chain	Res	Type	Group
1	C	67	ARG	Sidechain

5.2 Too-close contacts [i](#)

In the following table, the Non-H and H(model) columns list the number of non-hydrogen atoms and hydrogen atoms in the chain respectively. The H(added) column lists the number of hydrogen atoms added and optimized by MolProbity. The Clashes column lists the number of clashes within the asymmetric unit, whereas Symm-Clashes lists symmetry-related clashes.

Mol	Chain	Non-H	H(model)	H(added)	Clashes	Symm-Clashes
1	A	2039	0	2027	63	2
1	C	2039	0	2027	46	2
1	H	2039	0	2027	42	0
1	J	2039	0	2027	38	0
2	B	462	0	441	35	0
2	D	386	0	370	11	0
3	I	433	0	418	19	0
3	K	419	0	403	5	0
4	A	26	0	19	4	0
4	C	26	0	19	0	0
4	H	26	0	19	3	0
4	J	26	0	19	0	0
5	A	1	0	0	0	0
5	H	1	0	0	0	0
6	A	28	0	0	0	0
6	B	6	0	0	4	0
6	C	34	0	0	3	0
6	D	13	0	0	0	0
6	H	38	0	0	1	0
6	I	7	0	0	3	0
6	J	38	0	0	2	0
6	K	6	0	0	0	0
All	All	10132	0	9816	210	2

The all-atom clashscore is defined as the number of clashes found per 1000 atoms (including hydrogen atoms). The all-atom clashscore for this structure is 11.

All (210) close contacts within the same asymmetric unit are listed below, sorted by their clash magnitude.

Atom-1	Atom-2	Interatomic distance (Å)	Clash overlap (Å)
1:H:149:GLN:HB2	3:I:66:SER:HB3	1.44	0.97
1:J:61:ASN:N	6:J:401:HOH:O	2.12	0.81
1:H:8:GLY:HA3	1:H:94:GLY:O	1.86	0.76
1:H:149:GLN:HB2	3:I:66:SER:CB	2.19	0.73
6:I:107:HOH:O	1:J:19:VAL:HG13	1.88	0.72

Continued on next page...

Continued from previous page...

Atom-1	Atom-2	Interatomic distance (Å)	Clash overlap (Å)
1:H:149:GLN:CB	3:I:66:SER:HB3	2.19	0.72
1:A:100:ALA:HB1	2:B:63:MLE:HD23	1.72	0.71
1:A:71:TYR:HD2	2:B:65:TRP:CZ3	2.09	0.69
1:A:34:LEU:HD23	2:B:63:MLE:HD13	1.75	0.68
2:B:49:LYS:HD3	6:B:102:HOH:O	1.93	0.68
2:B:13:GLN:O	6:B:101:HOH:O	2.12	0.67
1:A:213:ILE:HG22	2:B:21:TYR:CZ	2.29	0.67
1:H:22:ARG:HG3	1:H:47:LEU:HD11	1.77	0.65
1:A:68:ARG:HG2	2:B:65:TRP:CZ3	2.32	0.65
1:H:146:GLU:OE2	1:H:167:GLN:NE2	2.30	0.65
1:H:173:GLU:CD	1:H:178:GLN:HB2	2.17	0.65
1:A:248:ASN:OD1	1:A:251:ILE:HG12	1.96	0.64
1:H:261:ASP:O	6:H:401:HOH:O	2.14	0.64
1:A:68:ARG:HA	2:B:65:TRP:HZ3	1.61	0.64
2:B:64:VAL:HG22	2:B:65:TRP:H	1.61	0.64
1:C:30:ILE:HD11	1:C:52:ILE:HD13	1.80	0.64
3:I:65:TRP:CG	3:I:66:SER:N	2.65	0.64
1:A:102:VAL:HB	2:B:63:MLE:HD21	1.79	0.63
1:A:68:ARG:HA	2:B:65:TRP:CZ3	2.34	0.63
1:A:71:TYR:CD2	2:B:65:TRP:CZ3	2.87	0.62
1:A:133:LEU:O	1:A:135:ILE:HG13	2.00	0.61
1:A:169:ALA:HB3	2:B:62:TYR:OH	2.01	0.61
1:H:8:GLY:CA	1:H:94:GLY:O	2.48	0.61
1:J:213:ILE:C	1:J:213:ILE:HD12	2.20	0.60
1:C:207:GLU:OE2	1:C:235:SER:OG	2.19	0.60
1:J:30:ILE:HD11	1:J:52:ILE:HD13	1.85	0.59
1:A:93:TYR:HH	2:B:61:SER:HG	1.50	0.59
1:A:213:ILE:HD12	1:A:213:ILE:C	2.23	0.59
2:D:31:ALA:O	1:J:154:ASN:HB3	2.02	0.59
3:I:12:GLY:O	1:J:20:LEU:HD13	2.03	0.59
1:C:8:GLY:HA3	1:C:94:GLY:O	2.03	0.58
1:H:71:TYR:HH	3:I:63:LEU:N	2.00	0.58
1:J:34:LEU:HD23	3:K:63:LEU:HD11	1.86	0.58
1:C:58:TYR:O	1:C:60:GLN:HG2	2.04	0.57
1:C:179:PHE:H	1:C:179:PHE:HD1	1.50	0.57
1:C:35:LEU:HD11	1:C:44:LEU:HD22	1.86	0.57
1:C:133:LEU:HD23	1:C:238:LEU:HD22	1.87	0.56
1:J:8:GLY:HA3	1:J:94:GLY:O	2.04	0.56
1:H:94:GLY:HA2	1:H:123:ILE:O	2.05	0.56
1:A:8:GLY:HA3	1:A:94:GLY:O	2.05	0.56
1:A:217:ARG:NH2	1:A:219:GLU:OE1	2.32	0.56

Continued on next page...

Continued from previous page...

Atom-1	Atom-2	Interatomic distance (Å)	Clash overlap (Å)
1:J:15:GLY:HA3	3:K:12:GLY:O	2.05	0.56
1:A:94:GLY:HA2	1:A:123:ILE:O	2.07	0.55
1:A:8:GLY:O	1:A:17:ILE:HG13	2.08	0.54
1:H:213:ILE:HD12	3:I:8:PHE:CE1	2.43	0.54
1:C:177:THR:HG21	6:C:431:HOH:O	2.08	0.54
1:H:19:VAL:HG23	1:J:17:ILE:O	2.08	0.54
3:I:21:TYR:HA	3:I:28:VAL:HG21	1.89	0.54
1:C:213:ILE:HD12	1:C:213:ILE:C	2.29	0.53
1:H:95:HIS:CG	1:H:98:VAL:HG23	2.44	0.53
1:C:226:LEU:N	1:C:227:PRO:CD	2.71	0.53
1:C:60:GLN:O	1:C:61:ASN:HB2	2.08	0.53
1:A:68:ARG:HH22	2:B:67:HIS:CD2	2.25	0.53
1:C:158:ASP:OD1	1:C:160:THR:OG1	2.23	0.53
1:A:53:ASN:O	1:A:56:GLN:HG2	2.08	0.52
1:A:164:LEU:HD21	1:A:238:LEU:HD13	1.90	0.52
3:K:16:GLN:OE1	3:K:16:GLN:HA	2.10	0.52
1:J:158:ASP:OD1	1:J:160:THR:OG1	2.25	0.52
1:A:118:LYS:HE2	2:D:22:LYS:HZ2	1.75	0.52
1:J:226:LEU:N	1:J:227:PRO:CD	2.72	0.52
1:H:58:TYR:O	1:H:60:GLN:HG2	2.10	0.51
1:H:149:GLN:HB2	3:I:66:SER:C	2.31	0.51
3:I:35:THR:O	3:I:39:ILE:HG13	2.10	0.51
1:C:101:CYS:O	1:C:105:MET:HG3	2.10	0.51
1:H:74:MET:SD	1:H:102:VAL:HG21	2.50	0.51
1:A:142:HIS:CD2	1:A:143:GLN:N	2.78	0.51
1:A:226:LEU:N	1:A:227:PRO:CD	2.73	0.50
1:C:52:ILE:HD12	1:C:52:ILE:N	2.26	0.50
1:H:142:HIS:CE1	1:H:144:SER:OG	2.64	0.50
3:I:65:TRP:O	3:I:66:SER:OG	2.22	0.50
1:J:213:ILE:HD12	1:J:214:GLN:N	2.25	0.50
1:J:213:ILE:C	1:J:213:ILE:CD1	2.79	0.50
1:C:15:GLY:HA3	2:D:12:GLY:O	2.11	0.50
1:H:234:ILE:O	4:H:301:SAH:C4	2.60	0.50
1:H:226:LEU:N	1:H:227:PRO:CD	2.74	0.50
1:A:182:SER:OG	1:A:184:ASP:OD2	2.27	0.50
1:C:34:LEU:HD13	1:C:54:LEU:HB2	1.94	0.50
1:A:187:GLN:HG3	1:A:191:GLU:OE1	2.12	0.50
1:H:170:ILE:O	1:H:173:GLU:HB3	2.11	0.50
1:A:58:TYR:OH	2:B:62:TYR:O	2.20	0.49
1:A:234:ILE:O	4:A:301:SAH:C4	2.60	0.49
1:H:164:LEU:HD21	1:H:238:LEU:HD13	1.95	0.49

Continued on next page...

Continued from previous page...

Atom-1	Atom-2	Interatomic distance (Å)	Clash overlap (Å)
1:J:133:LEU:N	1:J:133:LEU:HD23	2.26	0.49
1:A:75:VAL:O	1:A:79:LEU:HD23	2.12	0.49
2:B:37:GLU:HG3	2:B:53:LEU:HD13	1.94	0.49
1:J:100:ALA:HA	3:K:63:LEU:HB3	1.95	0.49
1:H:34:LEU:HD23	3:I:63:LEU:HD11	1.94	0.49
1:C:39:PHE:HE2	2:D:51:LYS:HG2	1.78	0.49
1:C:94:GLY:HA2	1:C:123:ILE:O	2.13	0.49
3:K:11:LEU:CD1	3:K:18:MET:HA	2.43	0.49
1:A:126:GLU:OE2	1:A:142:HIS:CE1	2.66	0.49
1:J:248:ASN:O	1:J:252:LEU:HD23	2.13	0.49
1:H:213:ILE:HD13	1:H:213:ILE:H	1.78	0.48
1:A:34:LEU:HD23	2:B:63:MLE:CD1	2.43	0.48
1:A:152:PHE:HA	1:C:252:LEU:HD11	1.95	0.48
1:C:22:ARG:HG3	1:C:47:LEU:HD11	1.94	0.48
1:J:111:LYS:NZ	1:J:117:ALA:O	2.46	0.48
1:A:173:GLU:HG3	1:A:178:GLN:HB2	1.95	0.48
1:C:96:PRO:O	1:C:100:ALA:HB3	2.13	0.48
2:D:33:GLY:O	1:H:249:TYR:HB2	2.14	0.48
1:J:70:THR:O	1:J:74:MET:HG3	2.14	0.48
1:A:10:GLY:HA2	1:A:94:GLY:HA2	1.95	0.47
1:A:164:LEU:HD21	1:A:238:LEU:CD1	2.44	0.47
4:A:301:SAH:SD	2:B:63:MLE:HN2	2.54	0.47
1:J:207:GLU:OE2	1:J:235:SER:OG	2.30	0.47
1:A:138:GLY:HA2	1:C:99:PHE:CE2	2.48	0.47
1:C:248:ASN:O	1:C:252:LEU:HD13	2.14	0.47
1:C:126:GLU:HB2	1:C:166:TRP:CZ2	2.49	0.47
1:A:143:GLN:HG2	1:C:143:GLN:HG2	1.96	0.47
1:C:133:LEU:CD2	1:C:238:LEU:HD22	2.44	0.47
1:H:100:ALA:HB1	3:I:63:LEU:HD22	1.96	0.47
1:A:102:VAL:CB	2:B:63:MLE:HD21	2.44	0.47
1:H:93:TYR:OH	4:H:301:SAH:HG2	2.14	0.47
1:A:102:VAL:CG2	2:B:63:MLE:HD21	2.45	0.47
1:A:102:VAL:HG23	2:B:63:MLE:CD2	2.45	0.46
2:B:49:LYS:O	2:B:52:THR:HB	2.14	0.46
1:H:174:HIS:HB2	1:J:262:LEU:HD23	1.98	0.46
1:C:27:HIS:O	1:C:87:LYS:HE3	2.16	0.46
1:C:130:TRP:CZ2	1:C:137:PRO:HB3	2.50	0.46
1:C:179:PHE:CD1	1:C:179:PHE:N	2.72	0.46
1:A:213:ILE:C	1:A:213:ILE:CD1	2.83	0.46
1:J:207:GLU:HB2	1:J:217:ARG:HB3	1.98	0.46
2:D:16:GLN:OE1	2:D:16:GLN:HA	2.16	0.45

Continued on next page...

Continued from previous page...

Atom-1	Atom-2	Interatomic distance (Å)	Clash overlap (Å)
1:J:164:LEU:HD21	1:J:238:LEU:HD13	1.97	0.45
1:A:201:HIS:HE1	1:A:241:PRO:O	2.00	0.45
1:A:8:GLY:HA2	1:A:92:LEU:O	2.16	0.45
1:A:149:GLN:NE2	2:B:66:SER:O	2.47	0.45
1:J:126:GLU:OE1	1:J:142:HIS:HE1	2.00	0.45
1:A:226:LEU:HB3	1:A:227:PRO:HD3	1.99	0.45
1:J:245:LEU:HD22	1:J:245:LEU:H	1.82	0.45
2:B:35:THR:O	2:B:39:ILE:HG13	2.16	0.45
4:A:301:SAH:SD	2:B:63:MLE:CN	3.05	0.45
2:B:66:SER:HB2	2:B:67:HIS:ND1	2.31	0.45
1:C:107:ILE:CD1	1:C:119:MET:HB2	2.47	0.44
2:B:63:MLE:HD22	2:B:63:MLE:O	2.18	0.44
1:J:130:TRP:CZ2	1:J:137:PRO:HB3	2.52	0.44
1:H:32:PHE:HA	1:H:52:ILE:O	2.16	0.44
1:A:149:GLN:HB2	2:B:66:SER:HA	2.00	0.44
2:D:47:MET:O	2:D:51:LYS:HG3	2.18	0.44
1:J:126:GLU:OE1	1:J:142:HIS:CE1	2.70	0.44
2:B:39:ILE:O	2:B:43:MET:HG2	2.18	0.44
1:C:5:VAL:O	1:C:89:VAL:HA	2.18	0.44
1:H:167:GLN:HG2	4:H:301:SAH:O3'	2.18	0.44
1:J:75:VAL:O	1:J:79:LEU:HD23	2.17	0.44
1:C:31:VAL:O	1:C:51:VAL:HA	2.17	0.43
2:B:21:TYR:HA	2:B:28:VAL:HG21	2.00	0.43
1:C:154:ASN:ND2	6:C:406:HOH:O	2.50	0.43
1:J:33:SER:HB3	1:J:44:LEU:CD2	2.49	0.43
1:C:32:PHE:HA	1:C:52:ILE:O	2.19	0.43
2:D:16:GLN:HE21	1:H:195:GLN:HA	1.84	0.43
1:H:176:LEU:HD11	3:I:65:TRP:CD1	2.54	0.43
3:I:37:GLU:HG3	3:I:53:LEU:HD13	2.01	0.43
1:A:93:TYR:OH	4:A:301:SAH:HG2	2.18	0.42
1:A:118:LYS:HE2	2:D:22:LYS:NZ	2.34	0.42
1:H:126:GLU:HB2	1:H:166:TRP:CZ2	2.54	0.42
1:J:101:CYS:O	1:J:105:MET:HG3	2.19	0.42
1:H:213:ILE:HG13	3:I:42:VAL:HG22	2.00	0.42
1:J:34:LEU:HD11	1:J:58:TYR:HE2	1.84	0.42
1:J:206:TYR:HA	1:J:217:ARG:O	2.19	0.42
1:A:157:PRO:HD2	1:A:196:TRP:CE2	2.55	0.42
1:H:142:HIS:CD2	1:H:143:GLN:N	2.88	0.42
1:J:27:HIS:O	1:J:87:LYS:HE3	2.20	0.42
1:A:100:ALA:CB	2:B:63:MLE:HD23	2.46	0.42
1:A:221:LEU:N	1:A:221:LEU:HD23	2.35	0.42

Continued on next page...

Continued from previous page...

Atom-1	Atom-2	Interatomic distance (Å)	Clash overlap (Å)
2:D:11:LEU:CD1	2:D:18:MET:HA	2.50	0.42
6:I:104:HOH:O	1:J:118:LYS:HE2	2.19	0.42
1:A:164:LEU:CD2	1:A:238:LEU:HD12	2.50	0.42
1:H:109:ARG:O	1:H:113:GLU:HG3	2.20	0.42
1:J:142:HIS:CD2	1:J:143:GLN:N	2.88	0.42
3:I:37:GLU:OE2	3:I:53:LEU:HD22	2.20	0.42
1:C:51:VAL:C	1:C:52:ILE:HD12	2.40	0.42
1:C:133:LEU:HD23	1:C:238:LEU:CD2	2.49	0.42
1:A:19:VAL:HG23	1:C:17:ILE:O	2.19	0.41
1:A:4:LEU:O	1:A:117:ALA:HA	2.20	0.41
2:D:4:LEU:HD13	2:D:34:LEU:HG	2.01	0.41
1:A:81:ALA:HB1	1:A:86:LYS:HD2	2.02	0.41
1:A:133:LEU:HD21	1:A:204:VAL:HG11	2.02	0.41
1:A:164:LEU:HD23	1:A:238:LEU:HD12	2.01	0.41
2:B:49:LYS:O	2:B:52:THR:N	2.53	0.41
1:H:194:ASN:HA	1:H:197:TYR:O	2.19	0.41
1:A:133:LEU:HD11	1:A:206:TYR:CD1	2.55	0.41
1:C:142:HIS:NE2	1:C:144:SER:OG	2.44	0.41
3:I:39:ILE:O	3:I:43:MET:HG2	2.20	0.41
6:B:101:HOH:O	1:C:23:SER:HB2	2.20	0.41
1:C:109:ARG:NH2	6:C:401:HOH:O	2.37	0.41
1:C:213:ILE:HD12	1:C:214:GLN:N	2.35	0.41
1:H:9:THR:OG1	1:H:93:TYR:HA	2.20	0.41
6:B:101:HOH:O	1:C:19:VAL:HG12	2.20	0.41
3:I:44:THR:O	6:I:101:HOH:O	2.22	0.41
1:J:133:LEU:HD22	1:J:218:ILE:HD13	2.03	0.41
2:B:49:LYS:O	2:B:50:LEU:C	2.58	0.41
1:C:126:GLU:HB2	1:C:166:TRP:HZ2	1.86	0.41
1:H:206:TYR:HA	1:H:217:ARG:O	2.20	0.41
1:J:129:LEU:C	1:J:129:LEU:HD23	2.41	0.41
1:A:173:GLU:OE1	1:A:178:GLN:N	2.39	0.41
1:A:195:GLN:HB2	1:A:196:TRP:CE3	2.56	0.41
1:A:246:GLU:HB2	1:C:154:ASN:HD22	1.85	0.41
2:B:62:TYR:HA	2:B:63:MLE:HN1	1.34	0.41
1:A:206:TYR:HA	1:A:217:ARG:O	2.19	0.41
1:C:146:GLU:O	1:C:147:ALA:C	2.60	0.40
1:J:170:ILE:HD12	6:J:412:HOH:O	2.22	0.40
1:A:161:THR:HG21	1:C:145:PHE:CE2	2.56	0.40
1:H:4:LEU:O	1:H:117:ALA:HA	2.22	0.40
1:H:56:GLN:HG3	1:H:57:PHE:CD2	2.57	0.40
1:H:130:TRP:CZ2	1:H:137:PRO:HB3	2.56	0.40

All (2) symmetry-related close contacts are listed below. The label for Atom-2 includes the symmetry operator and encoded unit-cell translations to be applied.

Atom-1	Atom-2	Interatomic distance (Å)	Clash overlap (Å)
1:A:179:PHE:CD2	1:C:179:PHE:CZ[1_554]	1.75	0.45
1:A:178:GLN:OE1	1:C:178:GLN:OE1[1_554]	2.07	0.13

5.3 Torsion angles [i](#)

5.3.1 Protein backbone [i](#)

In the following table, the Percentiles column shows the percent Ramachandran outliers of the chain as a percentile score with respect to all X-ray entries followed by that with respect to entries of similar resolution.

The Analysed column shows the number of residues for which the backbone conformation was analysed, and the total number of residues.

Mol	Chain	Analysed	Favoured	Allowed	Outliers	Percentiles	
1	A	260/263 (99%)	249 (96%)	10 (4%)	1 (0%)	30	34
1	C	260/263 (99%)	250 (96%)	9 (4%)	1 (0%)	30	34
1	H	260/263 (99%)	254 (98%)	6 (2%)	0	100	100
1	J	260/263 (99%)	247 (95%)	13 (5%)	0	100	100
2	B	53/78 (68%)	49 (92%)	3 (6%)	1 (2%)	6	4
2	D	47/78 (60%)	47 (100%)	0	0	100	100
3	I	51/78 (65%)	50 (98%)	1 (2%)	0	100	100
3	K	49/78 (63%)	48 (98%)	1 (2%)	0	100	100
All	All	1240/1364 (91%)	1194 (96%)	43 (4%)	3 (0%)	44	52

All (3) Ramachandran outliers are listed below:

Mol	Chain	Res	Type
1	C	61	ASN
2	B	64	VAL
1	A	241	PRO

5.3.2 Protein sidechains [i](#)

In the following table, the Percentiles column shows the percent sidechain outliers of the chain as a percentile score with respect to all X-ray entries followed by that with respect to entries of similar

resolution.

The Analysed column shows the number of residues for which the sidechain conformation was analysed, and the total number of residues.

Mol	Chain	Analysed	Rotameric	Outliers	Percentiles	
1	A	218/219 (100%)	216 (99%)	2 (1%)	75	86
1	C	218/219 (100%)	214 (98%)	4 (2%)	54	69
1	H	218/219 (100%)	214 (98%)	4 (2%)	54	69
1	J	218/219 (100%)	215 (99%)	3 (1%)	62	77
2	B	49/66 (74%)	46 (94%)	3 (6%)	15	18
2	D	42/66 (64%)	42 (100%)	0	100	100
3	I	47/67 (70%)	45 (96%)	2 (4%)	25	32
3	K	46/67 (69%)	43 (94%)	3 (6%)	14	16
All	All	1056/1142 (92%)	1035 (98%)	21 (2%)	50	65

All (21) residues with a non-rotameric sidechain are listed below:

Mol	Chain	Res	Type
1	A	47	LEU
1	A	244	LYS
2	B	49	LYS
2	B	65	TRP
2	B	66	SER
1	C	55	GLN
1	C	67	ARG
1	C	173	GLU
1	C	179	PHE
1	H	11	LEU
1	H	47	LEU
1	H	118	LYS
1	H	213	ILE
3	I	64	VAL
3	I	65	TRP
1	J	65	LYS
1	J	133	LEU
1	J	173	GLU
3	K	61	SER
3	K	63	LEU
3	K	64	VAL

Sometimes sidechains can be flipped to improve hydrogen bonding and reduce clashes. All (9) such

sidechains are listed below:

Mol	Chain	Res	Type
2	B	13	GLN
1	C	41	GLN
1	C	55	GLN
1	C	61	ASN
1	C	149	GLN
1	C	154	ASN
1	H	142	HIS
3	I	13	GLN
3	I	40	ASN

5.3.3 RNA [i](#)

There are no RNA molecules in this entry.

5.4 Non-standard residues in protein, DNA, RNA chains [i](#)

1 non-standard protein/DNA/RNA residue is modelled in this entry.

In the following table, the Counts columns list the number of bonds (or angles) for which Mogul statistics could be retrieved, the number of bonds (or angles) that are observed in the model and the number of bonds (or angles) that are defined in the Chemical Component Dictionary. The Link column lists molecule types, if any, to which the group is linked. The Z score for a bond length (or angle) is the number of standard deviations the observed value is removed from the expected value. A bond length (or angle) with $|Z| > 2$ is considered an outlier worth inspection. RMSZ is the root-mean-square of all Z scores of the bond lengths (or angles).

Mol	Type	Chain	Res	Link	Bond lengths			Bond angles		
					Counts	RMSZ	# $ Z > 2$	Counts	RMSZ	# $ Z > 2$
2	MLE	B	63	2	7,8,9	0.51	0	7,9,11	2.09	3 (42%)

In the following table, the Chirals column lists the number of chiral outliers, the number of chiral centers analysed, the number of these observed in the model and the number defined in the Chemical Component Dictionary. Similar counts are reported in the Torsion and Rings columns. '-' means no outliers of that kind were identified.

Mol	Type	Chain	Res	Link	Chirals	Torsions	Rings
2	MLE	B	63	2	-	3/5/8/10	-

There are no bond length outliers.

All (3) bond angle outliers are listed below:

Mol	Chain	Res	Type	Atoms	Z	Observed(°)	Ideal(°)
2	B	63	MLE	CB-CA-N	-4.67	103.51	110.59
2	B	63	MLE	CN-N-CA	2.10	119.97	113.70
2	B	63	MLE	O-C-CA	-2.04	119.51	124.77

There are no chirality outliers.

All (3) torsion outliers are listed below:

Mol	Chain	Res	Type	Atoms
2	B	63	MLE	O-C-CA-CB
2	B	63	MLE	N-CA-CB-CG
2	B	63	MLE	C-CA-CB-CG

There are no ring outliers.

1 monomer is involved in 12 short contacts:

Mol	Chain	Res	Type	Clashes	Symm-Clashes
2	B	63	MLE	12	0

5.5 Carbohydrates [i](#)

There are no oligosaccharides in this entry.

5.6 Ligand geometry [i](#)

Of 6 ligands modelled in this entry, 2 are monoatomic - leaving 4 for Mogul analysis.

In the following table, the Counts columns list the number of bonds (or angles) for which Mogul statistics could be retrieved, the number of bonds (or angles) that are observed in the model and the number of bonds (or angles) that are defined in the Chemical Component Dictionary. The Link column lists molecule types, if any, to which the group is linked. The Z score for a bond length (or angle) is the number of standard deviations the observed value is removed from the expected value. A bond length (or angle) with $|Z| > 2$ is considered an outlier worth inspection. RMSZ is the root-mean-square of all Z scores of the bond lengths (or angles).

Mol	Type	Chain	Res	Link	Bond lengths			Bond angles		
					Counts	RMSZ	$\# Z > 2$	Counts	RMSZ	$\# Z > 2$
4	SAH	J	301	-	23,28,28	0.73	0	22,40,40	0.81	1 (4%)
4	SAH	H	301	-	23,28,28	0.73	0	22,40,40	0.67	1 (4%)
4	SAH	A	301	-	23,28,28	0.73	0	22,40,40	0.69	1 (4%)
4	SAH	C	301	-	23,28,28	0.72	0	22,40,40	0.79	1 (4%)

In the following table, the Chirals column lists the number of chiral outliers, the number of chiral centers analysed, the number of these observed in the model and the number defined in the Chemical Component Dictionary. Similar counts are reported in the Torsion and Rings columns. '-' means no outliers of that kind were identified.

Mol	Type	Chain	Res	Link	Chirals	Torsions	Rings
4	SAH	J	301	-	-	0/11/31/31	0/3/3/3
4	SAH	H	301	-	-	0/11/31/31	0/3/3/3
4	SAH	A	301	-	-	0/11/31/31	0/3/3/3
4	SAH	C	301	-	-	3/11/31/31	0/3/3/3

There are no bond length outliers.

All (4) bond angle outliers are listed below:

Mol	Chain	Res	Type	Atoms	Z	Observed(°)	Ideal(°)
4	J	301	SAH	C5-C6-N6	2.26	123.75	120.31
4	A	301	SAH	C5-C6-N6	2.23	123.70	120.31
4	C	301	SAH	C5-C6-N6	2.19	123.64	120.31
4	H	301	SAH	C5-C6-N6	2.15	123.59	120.31

There are no chirality outliers.

All (3) torsion outliers are listed below:

Mol	Chain	Res	Type	Atoms
4	C	301	SAH	O-C-CA-CB
4	C	301	SAH	OXT-C-CA-CB
4	C	301	SAH	OXT-C-CA-N

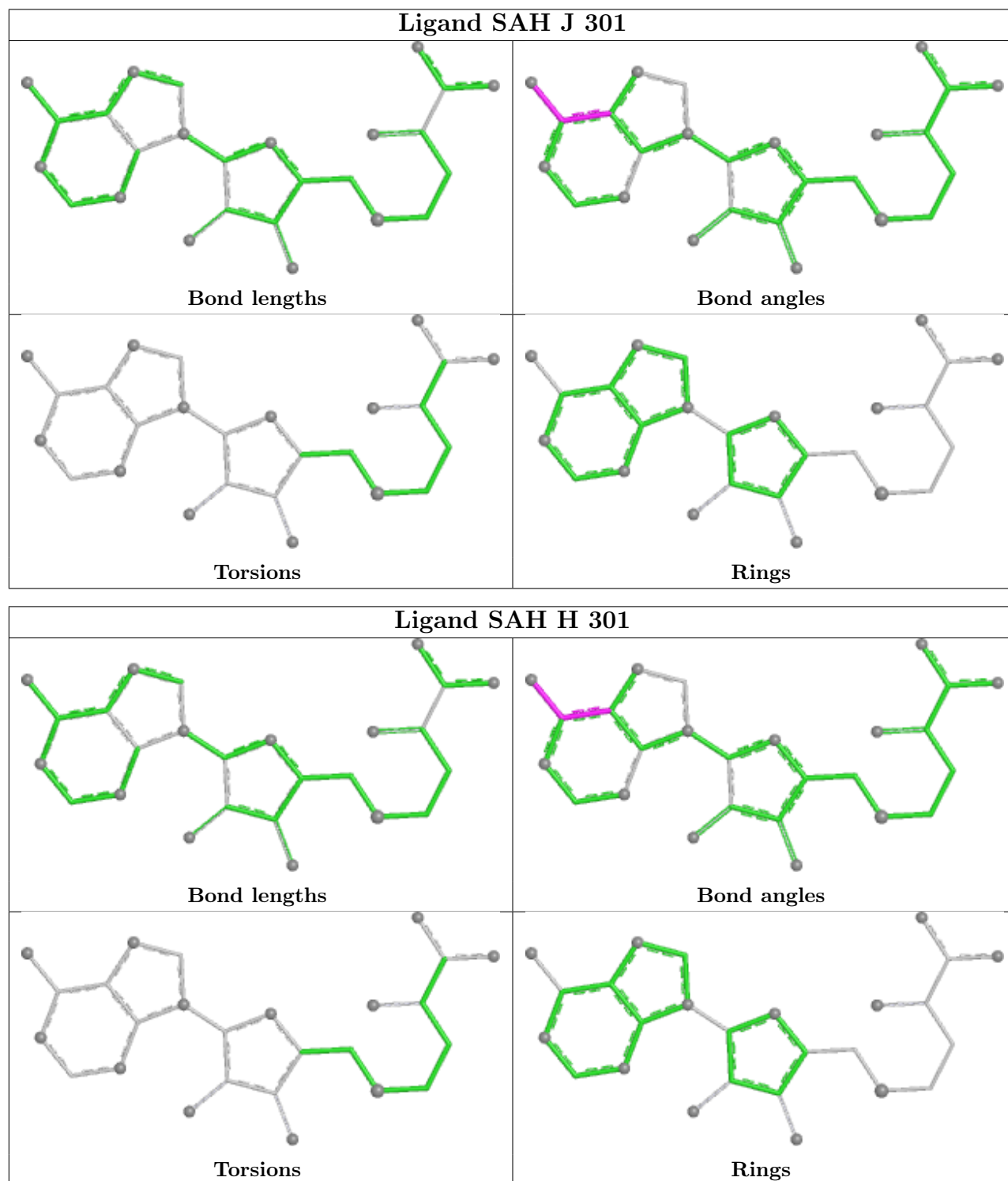
There are no ring outliers.

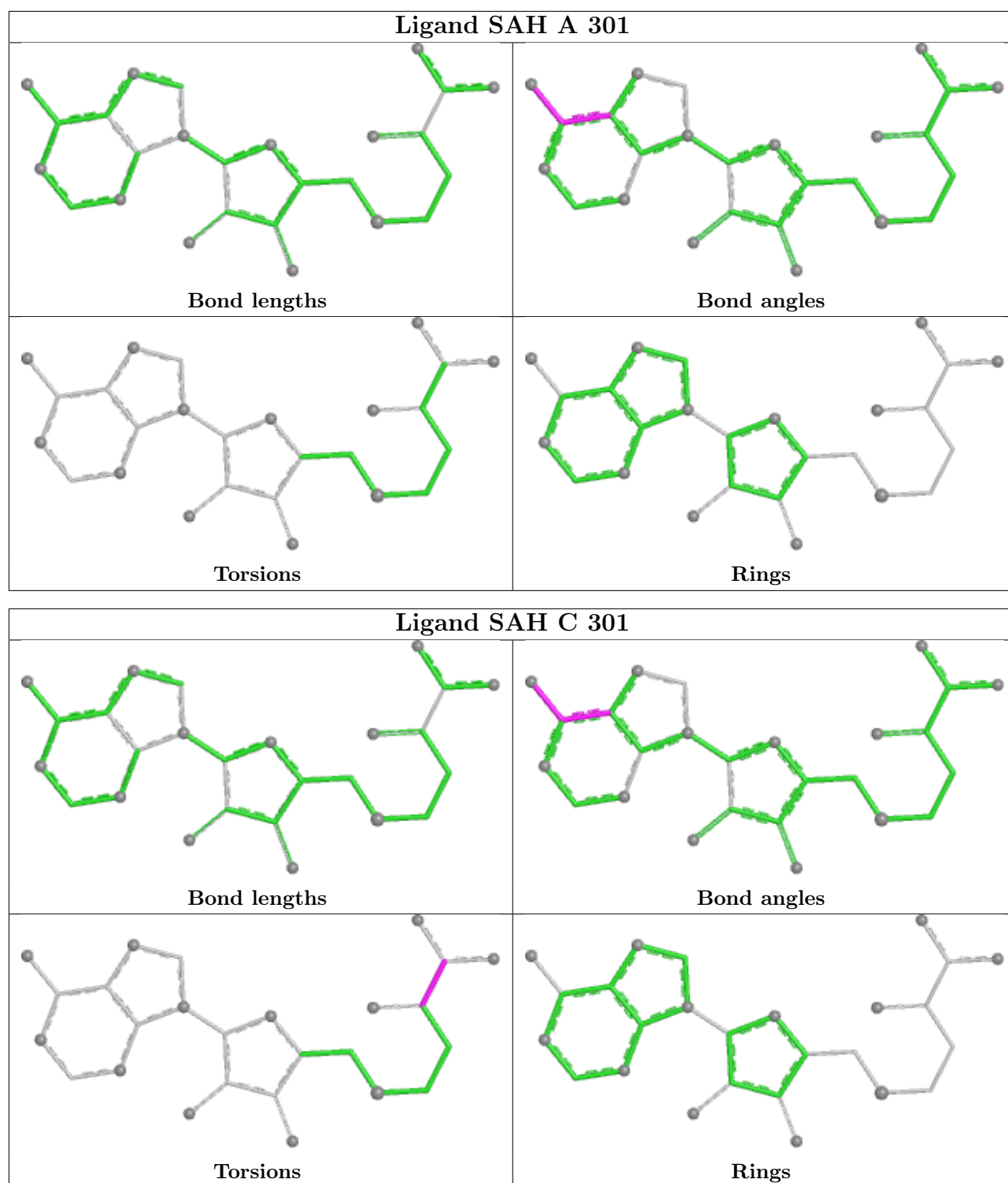
2 monomers are involved in 7 short contacts:

Mol	Chain	Res	Type	Clashes	Symm-Clashes
4	H	301	SAH	3	0
4	A	301	SAH	4	0

The following is a two-dimensional graphical depiction of Mogul quality analysis of bond lengths, bond angles, torsion angles, and ring geometry for all instances of the Ligand of Interest. In addition, ligands with molecular weight > 250 and outliers as shown on the validation Tables will also be included. For torsion angles, if less than 5% of the Mogul distribution of torsion angles is within 10 degrees of the torsion angle in question, then that torsion angle is considered an outlier. Any bond that is central to one or more torsion angles identified as an outlier by Mogul will be highlighted in the graph. For rings, the root-mean-square deviation (RMSD) between the ring in question and similar rings identified by Mogul is calculated over all ring torsion angles. If the

average RMSD is greater than 60 degrees and the minimal RMSD between the ring in question and any Mogul-identified rings is also greater than 60 degrees, then that ring is considered an outlier. The outliers are highlighted in purple. The color gray indicates Mogul did not find sufficient equivalents in the CSD to analyse the geometry.





5.7 Other polymers [\(i\)](#)

There are no such residues in this entry.

5.8 Polymer linkage issues

There are no chain breaks in this entry.

6 Fit of model and data [i](#)

6.1 Protein, DNA and RNA chains [i](#)

In the following table, the column labelled ‘#RSRZ> 2’ contains the number (and percentage) of RSRZ outliers, followed by percent RSRZ outliers for the chain as percentile scores relative to all X-ray entries and entries of similar resolution. The OWAB column contains the minimum, median, 95th percentile and maximum values of the occupancy-weighted average B-factor per residue. The column labelled ‘Q< 0.9’ lists the number of (and percentage) of residues with an average occupancy less than 0.9.

Mol	Chain	Analysed	<RSRZ>	#RSRZ>2	OWAB(Å ²)	Q<0.9
1	A	262/263 (99%)	-0.72	1 (0%) 89 87	13, 23, 44, 59	0
1	C	262/263 (99%)	-0.61	0 100 100	12, 26, 43, 67	0
1	H	262/263 (99%)	-0.64	0 100 100	11, 24, 44, 64	0
1	J	262/263 (99%)	-0.63	0 100 100	11, 26, 42, 64	0
2	B	57/78 (73%)	-0.63	1 (1%) 67 64	14, 28, 46, 57	0
2	D	49/78 (62%)	-0.71	0 100 100	14, 27, 47, 58	0
3	I	55/78 (70%)	-0.64	0 100 100	16, 26, 52, 58	0
3	K	53/78 (67%)	-0.68	0 100 100	15, 28, 57, 72	0
All	All	1262/1364 (92%)	-0.65	2 (0%) 92 90	11, 25, 45, 72	0

All (2) RSRZ outliers are listed below:

Mol	Chain	Res	Type	RSRZ
2	B	62	TYR	2.4
1	A	156	VAL	2.2

6.2 Non-standard residues in protein, DNA, RNA chains [i](#)

In the following table, the Atoms column lists the number of modelled atoms in the group and the number defined in the chemical component dictionary. The B-factors column lists the minimum, median, 95th percentile and maximum values of B factors of atoms in the group. The column labelled ‘Q< 0.9’ lists the number of atoms with occupancy less than 0.9.

Mol	Type	Chain	Res	Atoms	RSCC	RSR	B-factors(Å ²)	Q<0.9
2	MLE	B	63	9/10	0.94	0.10	28,29,35,39	0

6.3 Carbohydrates [i](#)

There are no monosaccharides in this entry.

6.4 Ligands [i](#)

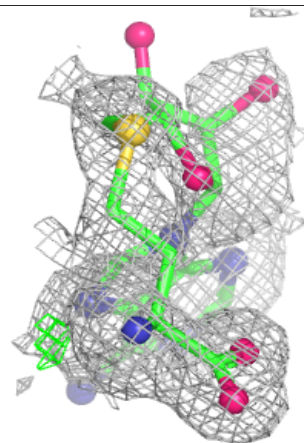
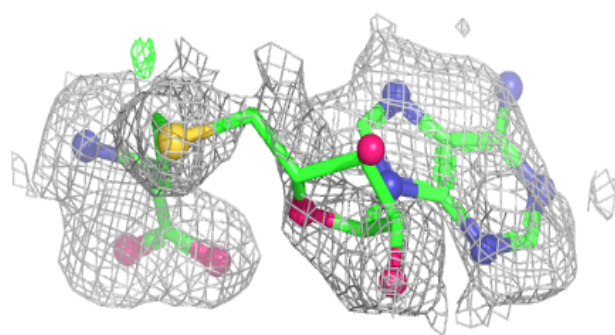
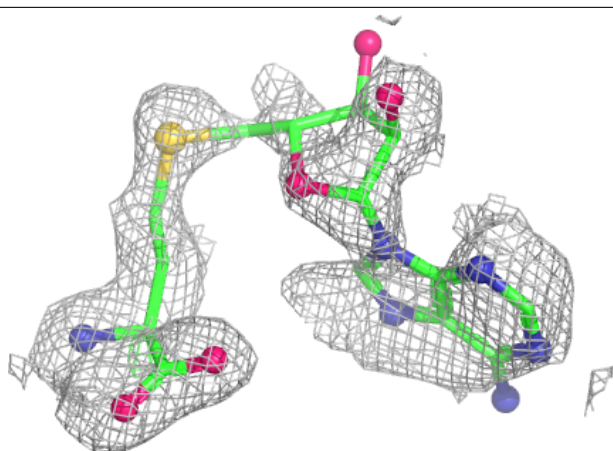
In the following table, the Atoms column lists the number of modelled atoms in the group and the number defined in the chemical component dictionary. The B-factors column lists the minimum, median, 95th percentile and maximum values of B factors of atoms in the group. The column labelled 'Q< 0.9' lists the number of atoms with occupancy less than 0.9.

Mol	Type	Chain	Res	Atoms	RSCC	RSR	B-factors(Å ²)	Q<0.9
4	SAH	A	301	26/26	0.96	0.08	18,29,33,35	26
4	SAH	C	301	26/26	0.97	0.07	20,25,30,31	26
4	SAH	H	301	26/26	0.97	0.08	16,30,36,37	26
4	SAH	J	301	26/26	0.97	0.05	18,26,34,38	0
5	ZN	A	302	1/1	0.99	0.05	45,45,45,45	0
5	ZN	H	302	1/1	0.99	0.06	50,50,50,50	0

The following is a graphical depiction of the model fit to experimental electron density of all instances of the Ligand of Interest. In addition, ligands with molecular weight > 250 and outliers as shown on the geometry validation Tables will also be included. Each fit is shown from different orientation to approximate a three-dimensional view.

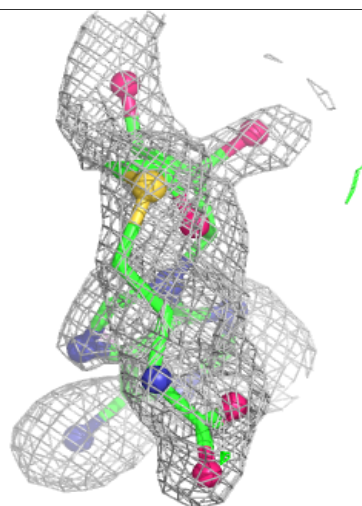
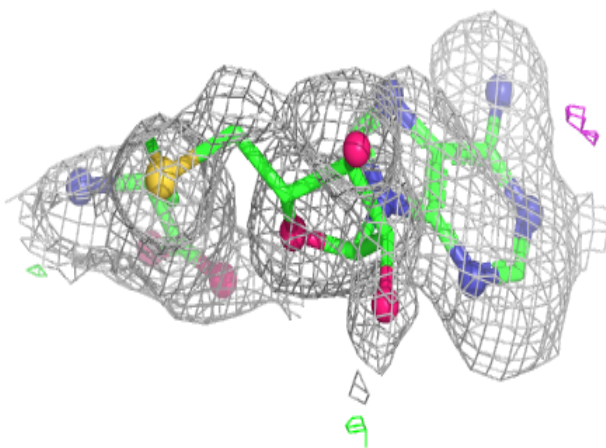
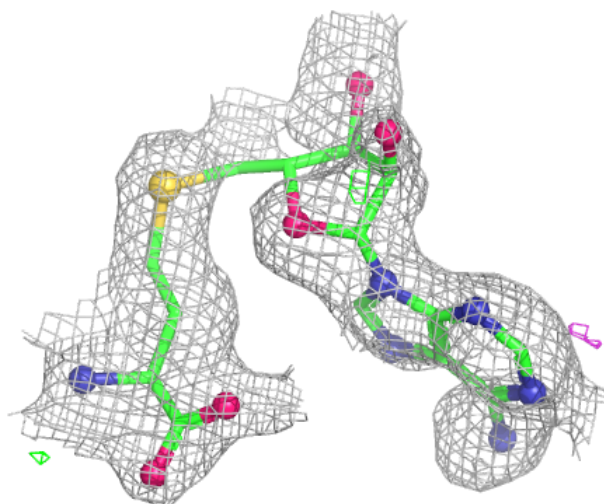
Electron density around SAH A 301:

$2mF_o-DF_c$ (at 0.7 rmsd) in gray
 mF_o-DF_c (at 3 rmsd) in purple (negative)
and green (positive)



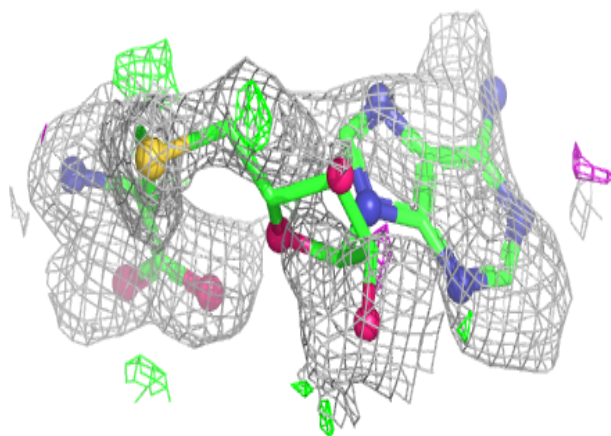
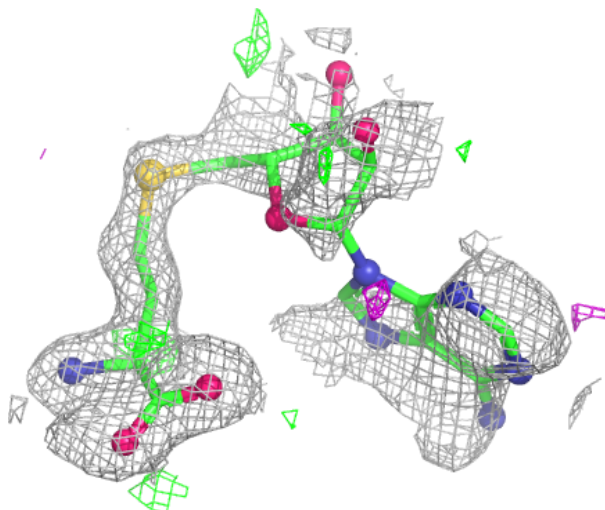
Electron density around SAH C 301:

$2mF_o-DF_c$ (at 0.7 rmsd) in gray
 mF_o-DF_c (at 3 rmsd) in purple (negative)
and green (positive)



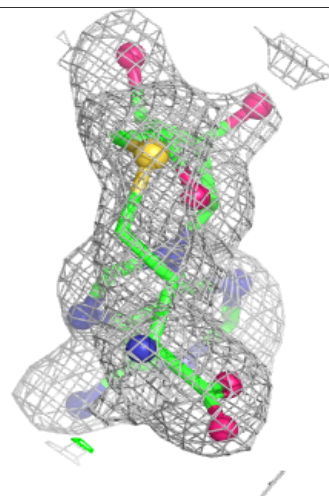
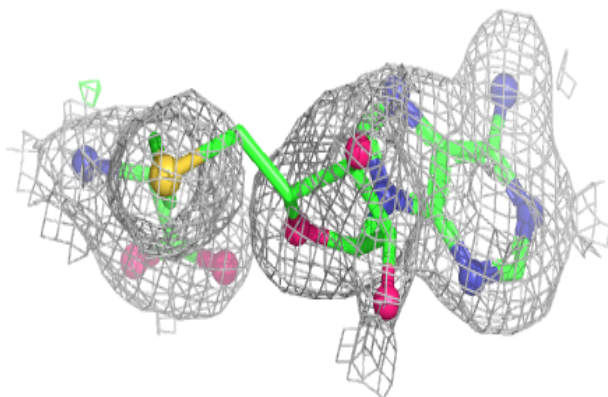
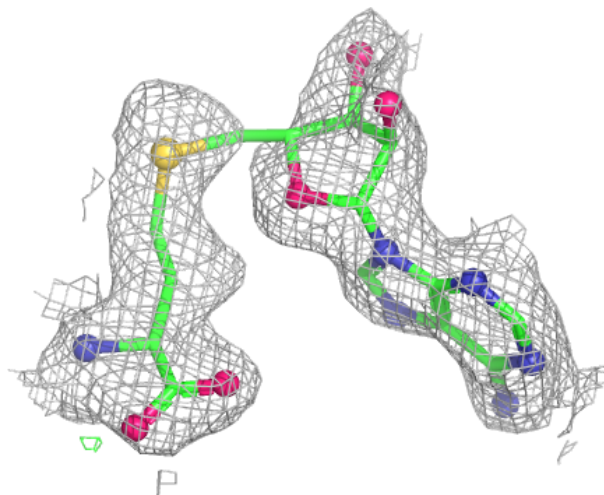
Electron density around SAH H 301:

$2mF_o-DF_c$ (at 0.7 rmsd) in gray
 mF_o-DF_c (at 3 rmsd) in purple (negative)
and green (positive)



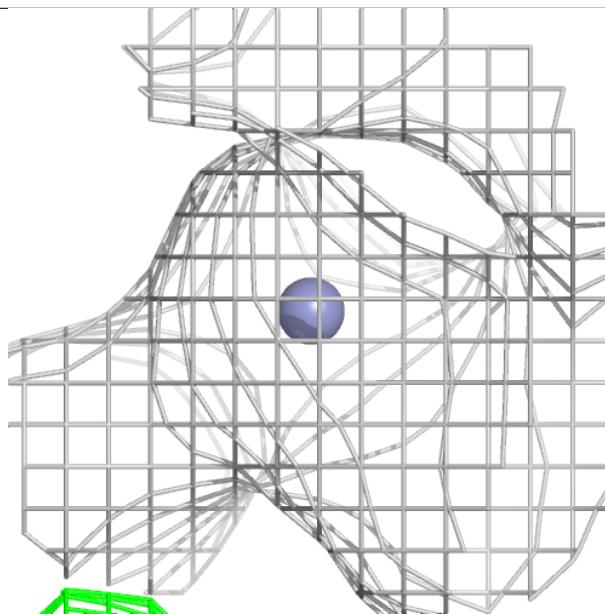
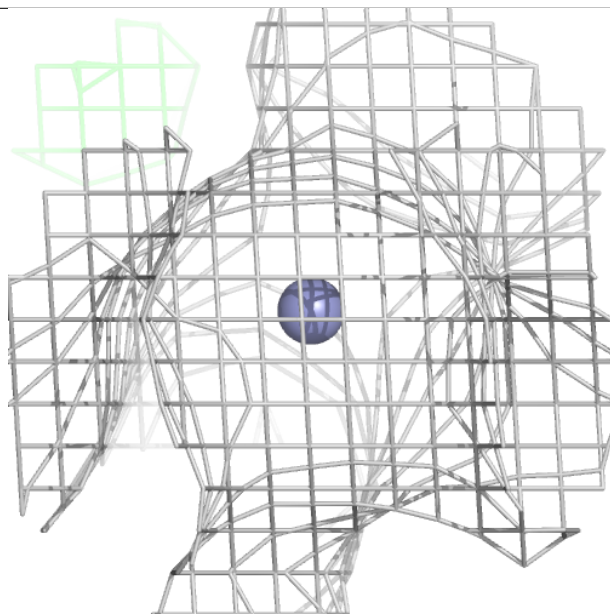
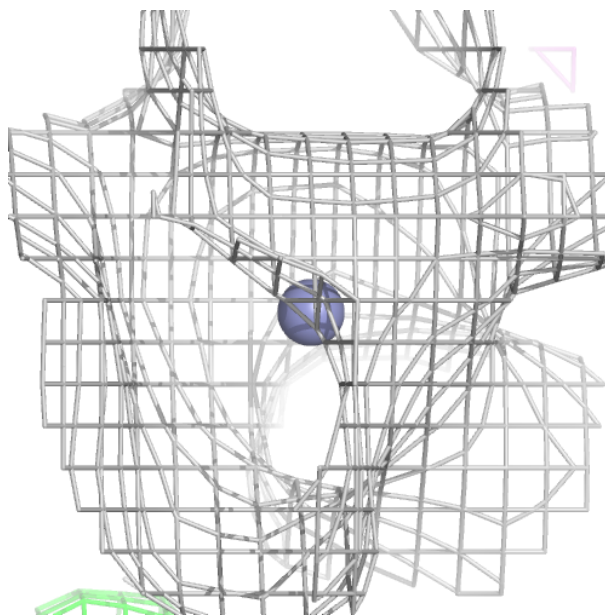
Electron density around SAH J 301:

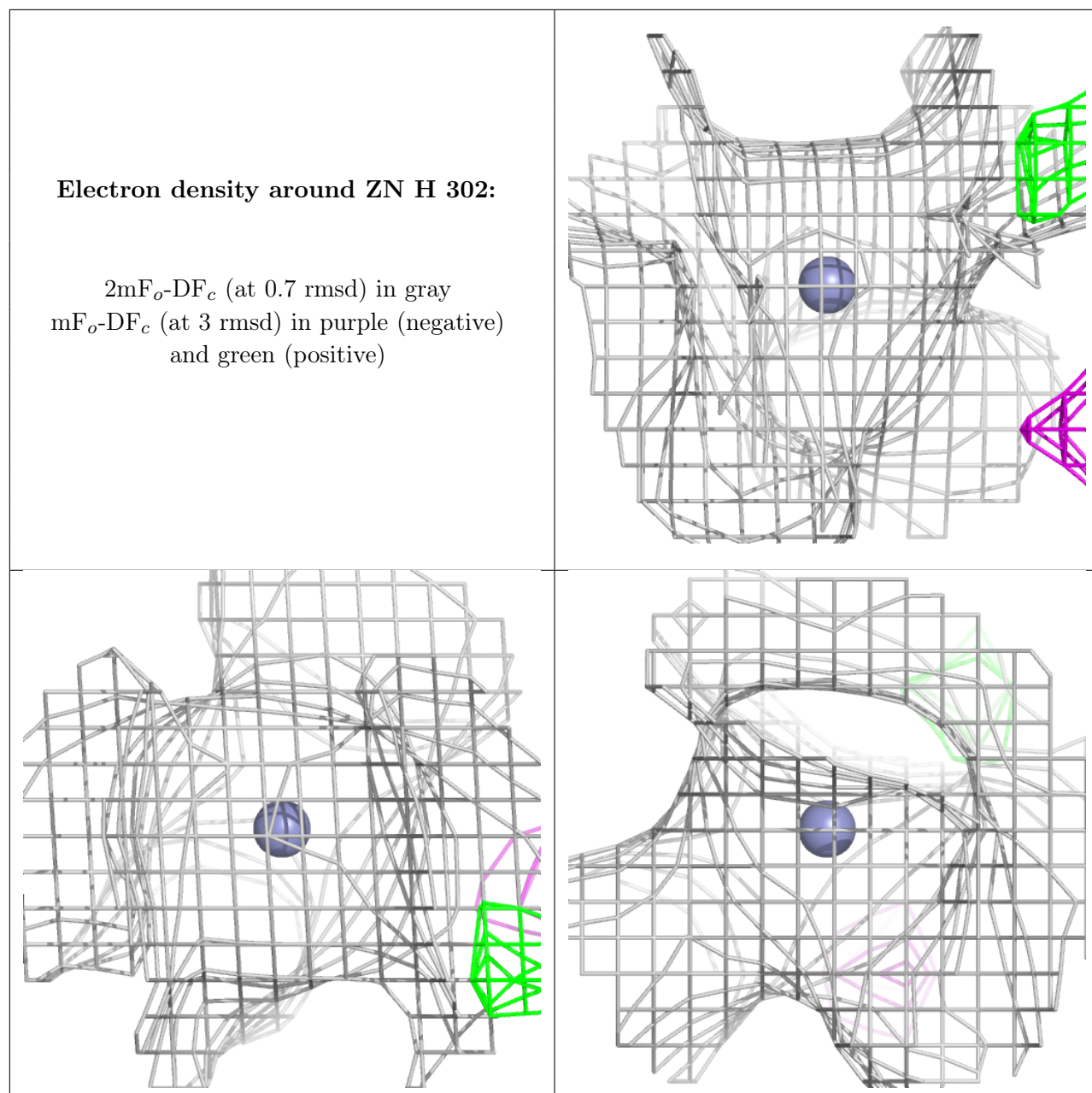
$2mF_o-DF_c$ (at 0.7 rmsd) in gray
 mF_o-DF_c (at 3 rmsd) in purple (negative)
and green (positive)



Electron density around ZN A 302:

$2mF_o-DF_c$ (at 0.7 rmsd) in gray
 mF_o-DF_c (at 3 rmsd) in purple (negative)
and green (positive)





6.5 Other polymers [i](#)

There are no such residues in this entry.