



# Full wwPDB X-ray Structure Validation Report ⓘ

Jun 22, 2024 – 06:00 PM EDT

PDB ID : 5CIG  
Title : Complex of yeast cytochrome c peroxidase (W191G) with iso-1 cytochrome c  
Authors : Crane, B.R.; Payne, T.M.  
Deposited on : 2015-07-12  
Resolution : 2.06 Å(reported)

This is a Full wwPDB X-ray Structure Validation Report for a publicly released PDB entry.

We welcome your comments at [validation@mail.wwpdb.org](mailto:validation@mail.wwpdb.org)

A user guide is available at

<https://www.wwpdb.org/validation/2017/XrayValidationReportHelp>

with specific help available everywhere you see the ⓘ symbol.

The types of validation reports are described at

<http://www.wwpdb.org/validation/2017/FAQs#types>.

---

The following versions of software and data (see [references ⓘ](#)) were used in the production of this report:

MolProbity : 4.02b-467  
Mogul : 1.8.5 (274361), CSD as541be (2020)  
Xtriage (Phenix) : 1.13  
EDS : 2.37.1  
buster-report : 1.1.7 (2018)  
Percentile statistics : 20191225.v01 (using entries in the PDB archive December 25th 2019)  
Refmac : 5.8.0158  
CCP4 : 7.0.044 (Gargrove)  
Ideal geometry (proteins) : Engh & Huber (2001)  
Ideal geometry (DNA, RNA) : Parkinson et al. (1996)  
Validation Pipeline (wwPDB-VP) : 2.37.1

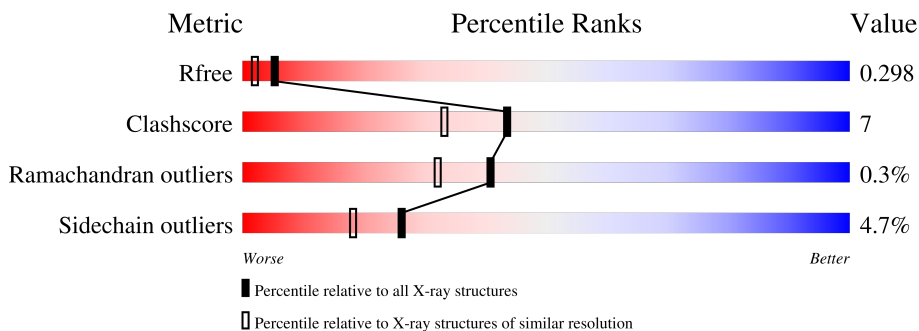
# 1 Overall quality at a glance

The following experimental techniques were used to determine the structure:

*X-RAY DIFFRACTION*

The reported resolution of this entry is 2.06 Å.

Percentile scores (ranging between 0-100) for global validation metrics of the entry are shown in the following graphic. The table shows the number of entries on which the scores are based.



Metric	Whole archive (#Entries)	Similar resolution (#Entries, resolution range(Å))
$R_{free}$	130704	2684 (2.08-2.04)
Clashscore	141614	2801 (2.08-2.04)
Ramachandran outliers	138981	2768 (2.08-2.04)
Sidechain outliers	138945	2768 (2.08-2.04)

The table below summarises the geometric issues observed across the polymeric chains and their fit to the electron density. The red, orange, yellow and green segments of the lower bar indicate the fraction of residues that contain outliers for  $\geq 3$ , 2, 1 and 0 types of geometric quality criteria respectively. A grey segment represents the fraction of residues that are not modelled. The numeric value for each fraction is indicated below the corresponding segment, with a dot representing fractions  $\leq 5\%$ .

Mol	Chain	Length	Quality of chain
1	A	294	86% 13% .
1	C	294	86% 13% .
2	B	108	79% 19% .
2	D	108	72% 24% .

## 2 Entry composition [i](#)

There are 4 unique types of molecules in this entry. The entry contains 6912 atoms, of which 0 are hydrogens and 0 are deuteriums.

In the tables below, the ZeroOcc column contains the number of atoms modelled with zero occupancy, the AltConf column contains the number of residues with at least one atom in alternate conformation and the Trace column contains the number of residues modelled with at most 2 atoms.

- Molecule 1 is a protein called Cytochrome c peroxidase, mitochondrial.

Mol	Chain	Residues	Atoms					ZeroOcc	AltConf	Trace
			Total	C	N	O	S			
1	A	294	2361	1505	394	456	6	0	0	0
1	C	294	2361	1505	394	456	6	0	0	0

There are 6 discrepancies between the modelled and reference sequences:

Chain	Residue	Modelled	Actual	Comment	Reference
A	53	ILE	THR	variant	UNP P00431
A	152	GLY	ASP	variant	UNP P00431
A	191	GLY	TRP	engineered mutation	UNP P00431
C	53	ILE	THR	variant	UNP P00431
C	152	GLY	ASP	variant	UNP P00431
C	191	GLY	TRP	engineered mutation	UNP P00431

- Molecule 2 is a protein called Cytochrome c iso-1.

Mol	Chain	Residues	Atoms					ZeroOcc	AltConf	Trace
			Total	C	N	O	S			
2	B	108	847	534	151	157	5	0	0	0
2	D	108	847	534	151	157	5	0	0	0

- Molecule 3 is HEME C (three-letter code: HEC) (formula: C<sub>34</sub>H<sub>34</sub>FeN<sub>4</sub>O<sub>4</sub>).



Mol	Chain	Residues	Atoms				ZeroOcc	AltConf	
			Total	C	Fe	N			O
3	A	1	43	34	1	4	4	0	0
3	B	1	43	34	1	4	4	0	0
3	C	1	43	34	1	4	4	0	0
3	D	1	43	34	1	4	4	0	0

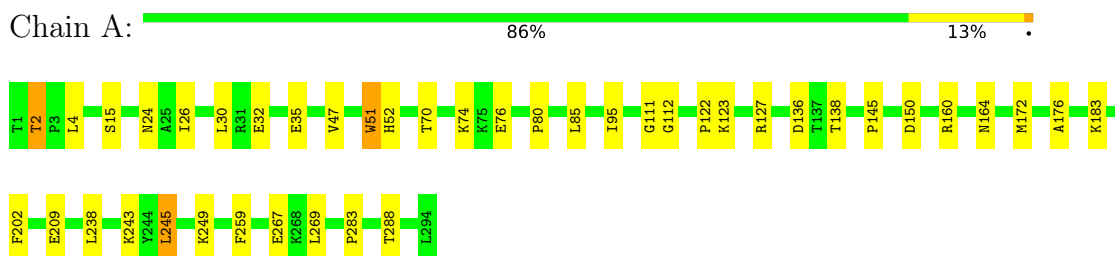
- Molecule 4 is water.

Mol	Chain	Residues	Atoms		ZeroOcc	AltConf
			Total	O		
4	A	142	142	142	0	0
4	B	42	42	42	0	0
4	C	118	118	118	0	0
4	D	22	22	22	0	0

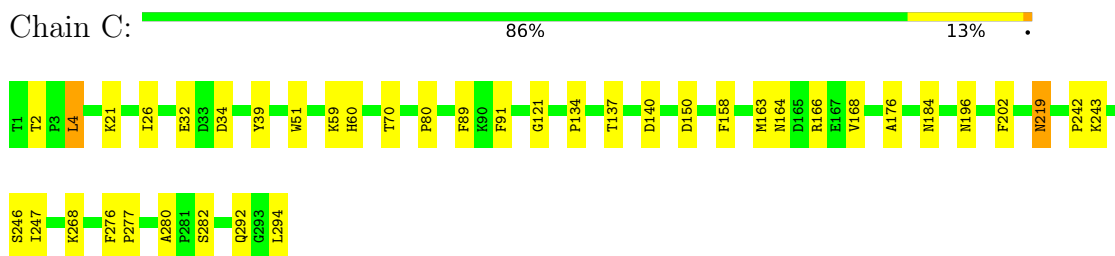
### 3 Residue-property plots [i](#)

These plots are drawn for all protein, RNA, DNA and oligosaccharide chains in the entry. The first graphic for a chain summarises the proportions of the various outlier classes displayed in the second graphic. The second graphic shows the sequence view annotated by issues in geometry. Residues are color-coded according to the number of geometric quality criteria for which they contain at least one outlier: green = 0, yellow = 1, orange = 2 and red = 3 or more. Stretches of 2 or more consecutive residues without any outlier are shown as a green connector. Residues present in the sample, but not in the model, are shown in grey.

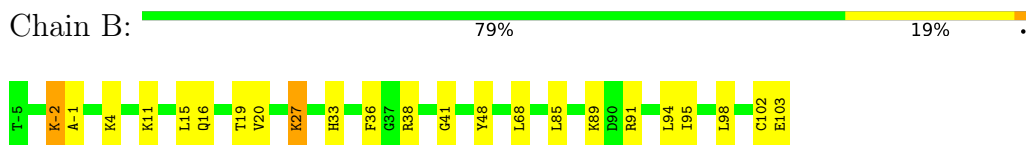
- Molecule 1: Cytochrome c peroxidase, mitochondrial



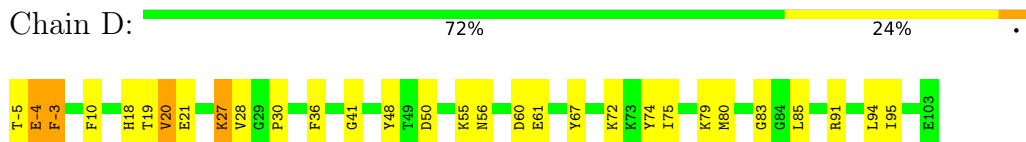
- Molecule 1: Cytochrome c peroxidase, mitochondrial



- Molecule 2: Cytochrome c iso-1



- Molecule 2: Cytochrome c iso-1



## 4 Data and refinement statistics i

Property	Value	Source
Space group	P 1 21 1	Depositor
Cell constants a, b, c, $\alpha$ , $\beta$ , $\gamma$	45.38Å 117.11Å 88.93Å 90.00° 105.06° 90.00°	Depositor
Resolution (Å)	29.18 – 2.06 29.18 – 2.06	Depositor EDS
% Data completeness (in resolution range)	94.8 (29.18-2.06) 89.6 (29.18-2.06)	Depositor EDS
$R_{merge}$	0.12	Depositor
$R_{sym}$	(Not available)	Depositor
$\langle I/\sigma(I) \rangle$ <sup>1</sup>	2.24 (at 2.06Å)	Xtrriage
Refinement program	PHENIX	Depositor
R, $R_{free}$	0.282 , 0.298 0.284 , 0.298	Depositor DCC
$R_{free}$ test set	1992 reflections (3.80%)	wwPDB-VP
Wilson B-factor (Å <sup>2</sup> )	34.0	Xtrriage
Anisotropy	0.175	Xtrriage
Bulk solvent $k_{sol}$ (e/Å <sup>3</sup> ), $B_{sol}$ (Å <sup>2</sup> )	0.31 , 24.9	EDS
L-test for twinning <sup>2</sup>	$\langle  L  \rangle = 0.41$ , $\langle L^2 \rangle = 0.24$	Xtrriage
Estimated twinning fraction	0.377 for h,-k,-h-l	Xtrriage
$F_o, F_c$ correlation	0.94	EDS
Total number of atoms	6912	wwPDB-VP
Average B, all atoms (Å <sup>2</sup> )	43.0	wwPDB-VP

Xtrriage's analysis on translational NCS is as follows: *The largest off-origin peak in the Patterson function is 3.93% of the height of the origin peak. No significant pseudotranslation is detected.*

<sup>1</sup>Intensities estimated from amplitudes.

<sup>2</sup>Theoretical values of  $\langle |L| \rangle$ ,  $\langle L^2 \rangle$  for acentric reflections are 0.5, 0.333 respectively for untwinned datasets, and 0.375, 0.2 for perfectly twinned datasets.

## 5 Model quality [i](#)

### 5.1 Standard geometry [i](#)

Bond lengths and bond angles in the following residue types are not validated in this section: HEC

The Z score for a bond length (or angle) is the number of standard deviations the observed value is removed from the expected value. A bond length (or angle) with  $|Z| > 5$  is considered an outlier worth inspection. RMSZ is the root-mean-square of all Z scores of the bond lengths (or angles).

Mol	Chain	Bond lengths		Bond angles	
		RMSZ	# Z  >5	RMSZ	# Z  >5
1	A	0.22	0/2426	0.36	0/3284
1	C	0.22	0/2426	0.38	0/3284
2	B	0.22	0/865	0.38	0/1156
2	D	0.25	0/865	0.38	0/1156
All	All	0.22	0/6582	0.37	0/8880

There are no bond length outliers.

There are no bond angle outliers.

There are no chirality outliers.

There are no planarity outliers.

### 5.2 Too-close contacts [i](#)

In the following table, the Non-H and H(model) columns list the number of non-hydrogen atoms and hydrogen atoms in the chain respectively. The H(added) column lists the number of hydrogen atoms added and optimized by MolProbity. The Clashes column lists the number of clashes within the asymmetric unit, whereas Symm-Clashes lists symmetry-related clashes.

Mol	Chain	Non-H	H(model)	H(added)	Clashes	Symm-Clashes
1	A	2361	0	2245	24	0
1	C	2361	0	2245	23	0
2	B	847	0	849	18	0
2	D	847	0	849	18	0
3	A	43	0	32	2	0
3	B	43	0	31	1	0
3	C	43	0	32	2	0
3	D	43	0	31	3	0
4	A	142	0	0	11	0

*Continued on next page...*

*Continued from previous page...*

Mol	Chain	Non-H	H(model)	H(added)	Clashes	Symm-Clashes
4	B	42	0	0	5	0
4	C	118	0	0	12	1
4	D	22	0	0	7	1
All	All	6912	0	6314	87	1

The all-atom clashscore is defined as the number of clashes found per 1000 atoms (including hydrogen atoms). The all-atom clashscore for this structure is 7.

All (87) close contacts within the same asymmetric unit are listed below, sorted by their clash magnitude.

Atom-1	Atom-2	Interatomic distance (Å)	Clash overlap (Å)
2:D:80:MET:SD	4:D:302:HOH:O	2.20	0.97
1:A:52:HIS:NE2	4:A:403:HOH:O	2.03	0.89
1:C:121:GLY:O	4:C:401:HOH:O	1.95	0.85
1:C:184:ASN:ND2	4:C:405:HOH:O	2.11	0.83
2:B:38:ARG:NH1	4:B:303:HOH:O	2.13	0.81
2:B:38:ARG:N	4:B:302:HOH:O	2.11	0.81
1:C:80:PRO:O	4:C:402:HOH:O	1.99	0.78
1:A:111:GLY:O	4:A:402:HOH:O	2.03	0.77
2:D:83:GLY:O	4:D:301:HOH:O	2.03	0.76
1:A:15:SER:OG	4:A:401:HOH:O	2.03	0.75
1:C:219:ASN:OD1	4:C:403:HOH:O	2.04	0.74
1:A:80:PRO:O	4:A:404:HOH:O	2.05	0.74
2:B:36:PHE:O	4:B:301:HOH:O	2.04	0.74
1:A:160:ARG:NH1	4:A:409:HOH:O	2.21	0.72
1:C:150:ASP:OD2	4:C:404:HOH:O	2.06	0.72
1:A:267:GLU:OE1	4:A:405:HOH:O	2.10	0.69
2:D:85:LEU:HD11	2:D:94:LEU:HD23	1.75	0.67
2:B:19:THR:HG23	2:B:27:LYS:HD3	1.75	0.67
1:C:246:SER:OG	4:C:406:HOH:O	2.12	0.67
1:C:176:ALA:HB2	1:C:202:PHE:HB2	1.78	0.66
1:C:60:HIS:O	4:C:407:HOH:O	2.14	0.65
1:C:294:LEU:O	4:C:408:HOH:O	2.15	0.65
1:C:163:MET:SD	1:C:268:LYS:NZ	2.70	0.64
1:A:76:GLU:OE2	4:A:406:HOH:O	2.15	0.63
2:B:33:HIS:NE2	2:B:103:GLU:OXT	2.35	0.60
1:A:209:GLU:OE2	4:A:407:HOH:O	2.17	0.58
2:B:94:LEU:HD21	3:B:201:HEC:HMB1	1.87	0.57
1:C:196:ASN:OD1	4:C:409:HOH:O	2.18	0.56
1:C:4:LEU:H	1:C:4:LEU:HD13	1.70	0.56
1:A:245:LEU:HD22	1:A:249:LYS:HE3	1.86	0.56

*Continued on next page...*



*Continued from previous page...*

Atom-1	Atom-2	Interatomic distance (Å)	Clash overlap (Å)
2:D:67:TYR:HD1	2:D:74:TYR:HD2	1.55	0.55
2:B:16:GLN:O	4:B:304:HOH:O	2.18	0.55
1:A:35:GLU:O	4:A:408:HOH:O	2.19	0.53
1:A:26:ILE:HG12	1:A:95:ILE:HD13	1.91	0.53
1:A:47:VAL:HG22	3:A:301:HEC:HMD2	1.90	0.52
1:C:242:PRO:HG2	1:C:243:LYS:HE2	1.94	0.49
2:D:55:LYS:HE2	2:D:75:ILE:HG12	1.94	0.49
2:D:67:TYR:OH	4:D:302:HOH:O	2.15	0.49
1:C:292:GLN:O	4:C:410:HOH:O	2.20	0.49
1:C:158:PHE:HB3	1:C:163:MET:HB2	1.94	0.49
2:D:91:ARG:O	2:D:95:ILE:HG12	2.14	0.48
1:A:112:GLY:HA2	4:A:402:HOH:O	2.15	0.47
2:B:91:ARG:O	2:B:95:ILE:HG12	2.14	0.47
2:B:85:LEU:HD11	2:B:94:LEU:HD22	1.96	0.47
1:A:51:TRP:HE3	1:A:269:LEU:HD21	1.80	0.46
2:D:-5:THR:OG1	2:D:-3:PHE:O	2.32	0.46
2:D:79:LYS:HG3	3:D:201:HEC:HMD1	1.97	0.46
1:A:145:PRO:HB2	3:A:301:HEC:HBB2	1.97	0.46
1:C:34:ASP:O	1:C:39:TYR:HA	2.16	0.46
1:A:70:THR:HB	1:A:138:THR:HG23	1.97	0.45
1:A:24:ASN:ND2	4:C:410:HOH:O	2.30	0.45
1:A:164:ASN:HB2	4:A:518:HOH:O	2.16	0.45
2:B:27:LYS:HE3	4:B:304:HOH:O	2.17	0.45
2:D:19:THR:HG23	2:D:27:LYS:HD3	1.97	0.45
2:D:21:GLU:OE1	2:D:21:GLU:N	2.47	0.44
1:A:122:PRO:HB3	1:A:259:PHE:HB3	2.00	0.44
2:B:-2:LYS:HB3	2:B:-1:ALA:H	1.52	0.44
2:D:27:LYS:HB2	2:D:28:VAL:H	1.56	0.44
3:C:301:HEC:HHA	3:C:301:HEC:HBA2	2.00	0.43
1:C:276:PHE:HA	1:C:277:PRO:HD3	1.79	0.43
2:B:11:LYS:HA	2:B:15:LEU:HB2	2.01	0.43
2:B:98:LEU:HD23	2:B:98:LEU:HA	1.82	0.43
2:D:-4:GLU:HB2	4:D:313:HOH:O	2.17	0.43
1:A:123:LYS:HE2	1:A:288:THR:HG23	1.99	0.43
1:C:277:PRO:HD2	1:C:280:ALA:HB2	2.01	0.43
1:A:127:ARG:HD2	1:A:283:PRO:HG3	2.01	0.43
1:A:52:HIS:ND1	1:A:85:LEU:HD11	2.34	0.43
2:B:98:LEU:HD22	2:B:102:CYS:SG	2.59	0.43
3:D:201:HEC:C1A	4:D:302:HOH:O	2.66	0.42
2:B:68:LEU:HD12	2:B:95:ILE:HD11	2.02	0.42
1:C:26:ILE:HG23	1:C:91:PHE:HE1	1.83	0.42

*Continued on next page...*

Continued from previous page...

Atom-1	Atom-2	Interatomic distance (Å)	Clash overlap (Å)
1:C:166:ARG:HA	1:C:247:ILE:HD13	2.02	0.42
2:B:41:GLY:HA2	2:B:48:TYR:CZ	2.55	0.41
3:C:301:HEC:HMB1	3:C:301:HEC:CBB	2.50	0.41
1:C:59:LYS:NZ	4:C:437:HOH:O	2.53	0.41
1:C:164:ASN:O	1:C:168:VAL:HG13	2.21	0.41
2:D:56:ASN:ND2	4:D:303:HOH:O	2.21	0.41
1:A:172:MET:HG2	1:A:238:LEU:HD11	2.02	0.41
1:A:176:ALA:HB2	1:A:202:PHE:HB2	2.03	0.41
1:C:134:PRO:O	1:C:137:THR:HG22	2.21	0.41
2:D:41:GLY:HA2	2:D:48:TYR:CE2	2.56	0.41
2:B:41:GLY:HA2	2:B:48:TYR:CE2	2.56	0.41
2:D:36:PHE:HB2	4:D:314:HOH:O	2.21	0.41
2:D:10:PHE:CZ	2:D:20:VAL:HG13	2.57	0.40
2:B:4:LYS:H	2:B:4:LYS:HD2	1.85	0.40
2:D:18:HIS:HE1	2:D:30:PRO:HD2	1.86	0.40
3:D:201:HEC:CBC	3:D:201:HEC:HMC1	2.52	0.40

All (1) symmetry-related close contacts are listed below. The label for Atom-2 includes the symmetry operator and encoded unit-cell translations to be applied.

Atom-1	Atom-2	Interatomic distance (Å)	Clash overlap (Å)
4:C:448:HOH:O	4:D:321:HOH:O[2_444]	2.01	0.19

## 5.3 Torsion angles [i](#)

### 5.3.1 Protein backbone [i](#)

In the following table, the Percentiles column shows the percent Ramachandran outliers of the chain as a percentile score with respect to all X-ray entries followed by that with respect to entries of similar resolution.

The Analysed column shows the number of residues for which the backbone conformation was analysed, and the total number of residues.

Mol	Chain	Analysed	Favoured	Allowed	Outliers	Percentiles	
1	A	292/294 (99%)	285 (98%)	6 (2%)	1 (0%)	41	32
1	C	292/294 (99%)	283 (97%)	9 (3%)	0	100	100
2	B	106/108 (98%)	103 (97%)	2 (2%)	1 (1%)	17	8
2	D	106/108 (98%)	99 (93%)	7 (7%)	0	100	100

Continued on next page...

*Continued from previous page...*

Mol	Chain	Analysed	Favoured	Allowed	Outliers	Percentiles	
All	All	796/804 (99%)	770 (97%)	24 (3%)	2 (0%)	41	32

All (2) Ramachandran outliers are listed below:

Mol	Chain	Res	Type
2	B	-2	LYS
1	A	2	THR

### 5.3.2 Protein sidechains [i](#)

In the following table, the Percentiles column shows the percent sidechain outliers of the chain as a percentile score with respect to all X-ray entries followed by that with respect to entries of similar resolution.

The Analysed column shows the number of residues for which the sidechain conformation was analysed, and the total number of residues.

Mol	Chain	Analysed	Rotameric	Outliers	Percentiles	
1	A	251/251 (100%)	240 (96%)	11 (4%)	28	21
1	C	251/251 (100%)	241 (96%)	10 (4%)	31	24
2	B	89/89 (100%)	86 (97%)	3 (3%)	37	30
2	D	89/89 (100%)	81 (91%)	8 (9%)	9	4
All	All	680/680 (100%)	648 (95%)	32 (5%)	26	18

All (32) residues with a non-rotameric sidechain are listed below:

Mol	Chain	Res	Type
1	A	2	THR
1	A	4	LEU
1	A	30	LEU
1	A	32	GLU
1	A	51	TRP
1	A	74	LYS
1	A	136	ASP
1	A	150	ASP
1	A	183	LYS
1	A	243	LYS
1	A	245	LEU
2	B	20	VAL
2	B	27	LYS

*Continued on next page...*

*Continued from previous page...*

Mol	Chain	Res	Type
2	B	89	LYS
1	C	2	THR
1	C	4	LEU
1	C	21	LYS
1	C	32	GLU
1	C	51	TRP
1	C	70	THR
1	C	89	PHE
1	C	140	ASP
1	C	219	ASN
1	C	282	SER
2	D	-4	GLU
2	D	-3	PHE
2	D	20	VAL
2	D	27	LYS
2	D	50	ASP
2	D	60	ASP
2	D	61	GLU
2	D	72	LYS

Sometimes sidechains can be flipped to improve hydrogen bonding and reduce clashes. There are no such sidechains identified.

### 5.3.3 RNA [i](#)

There are no RNA molecules in this entry.

## 5.4 Non-standard residues in protein, DNA, RNA chains [i](#)

There are no non-standard protein/DNA/RNA residues in this entry.

## 5.5 Carbohydrates [i](#)

There are no monosaccharides in this entry.

## 5.6 Ligand geometry [i](#)

4 ligands are modelled in this entry.

In the following table, the Counts columns list the number of bonds (or angles) for which Mogul statistics could be retrieved, the number of bonds (or angles) that are observed in the model and

the number of bonds (or angles) that are defined in the Chemical Component Dictionary. The Link column lists molecule types, if any, to which the group is linked. The Z score for a bond length (or angle) is the number of standard deviations the observed value is removed from the expected value. A bond length (or angle) with  $|Z| > 2$  is considered an outlier worth inspection. RMSZ is the root-mean-square of all Z scores of the bond lengths (or angles).

Mol	Type	Chain	Res	Link	Bond lengths			Bond angles		
					Counts	RMSZ	# Z  > 2	Counts	RMSZ	# Z  > 2
3	HEC	A	301	1	32,50,50	2.25	5 (15%)	24,82,82	1.66	5 (20%)
3	HEC	B	201	2	32,50,50	2.24	5 (15%)	24,82,82	1.72	6 (25%)
3	HEC	D	201	2	32,50,50	2.24	5 (15%)	24,82,82	1.66	5 (20%)
3	HEC	C	301	1	32,50,50	2.26	6 (18%)	24,82,82	1.65	5 (20%)

In the following table, the Chirals column lists the number of chiral outliers, the number of chiral centers analysed, the number of these observed in the model and the number defined in the Chemical Component Dictionary. Similar counts are reported in the Torsion and Rings columns. '-' means no outliers of that kind were identified.

Mol	Type	Chain	Res	Link	Chirals	Torsions	Rings
3	HEC	A	301	1	-	0/10/54/54	-
3	HEC	B	201	2	-	1/10/54/54	-
3	HEC	D	201	2	-	2/10/54/54	-
3	HEC	C	301	1	-	3/10/54/54	-

All (21) bond length outliers are listed below:

Mol	Chain	Res	Type	Atoms	Z	Observed(Å)	Ideal(Å)
3	C	301	HEC	C3C-C2C	-5.80	1.34	1.40
3	B	201	HEC	C3D-C2D	5.52	1.54	1.37
3	D	201	HEC	C3D-C2D	5.45	1.53	1.37
3	A	301	HEC	C3D-C2D	5.42	1.53	1.37
3	C	301	HEC	C2B-C3B	-5.40	1.35	1.40
3	D	201	HEC	C2B-C3B	-5.38	1.35	1.40
3	A	301	HEC	C2B-C3B	-5.36	1.35	1.40
3	B	201	HEC	C2B-C3B	-5.32	1.35	1.40
3	A	301	HEC	C3C-C2C	-5.31	1.35	1.40
3	C	301	HEC	C3D-C2D	5.28	1.53	1.37
3	B	201	HEC	C3C-C2C	-5.24	1.35	1.40
3	D	201	HEC	C3C-C2C	-5.19	1.35	1.40
3	D	201	HEC	CBB-CAB	-4.17	1.33	1.49
3	B	201	HEC	CBB-CAB	-4.12	1.34	1.49
3	B	201	HEC	CBC-CAC	-4.06	1.34	1.49
3	A	301	HEC	CBB-CAB	-4.05	1.34	1.49

*Continued on next page...*

Continued from previous page...

Mol	Chain	Res	Type	Atoms	Z	Observed(Å)	Ideal(Å)
3	D	201	HEC	CBC-CAC	-4.05	1.34	1.49
3	A	301	HEC	CBC-CAC	-4.04	1.34	1.49
3	C	301	HEC	CBB-CAB	-3.99	1.34	1.49
3	C	301	HEC	CBC-CAC	-3.94	1.34	1.49
3	C	301	HEC	CAD-C3D	2.07	1.55	1.52

All (21) bond angle outliers are listed below:

Mol	Chain	Res	Type	Atoms	Z	Observed(°)	Ideal(°)
3	C	301	HEC	CMC-C2C-C1C	-3.80	122.63	128.46
3	C	301	HEC	CMB-C2B-C1B	-3.58	122.96	128.46
3	A	301	HEC	CMB-C2B-C1B	-3.52	123.05	128.46
3	B	201	HEC	CMB-C2B-C1B	-3.46	123.15	128.46
3	A	301	HEC	CMC-C2C-C1C	-3.37	123.29	128.46
3	D	201	HEC	CMC-C2C-C1C	-3.35	123.31	128.46
3	B	201	HEC	CMC-C2C-C1C	-3.28	123.42	128.46
3	D	201	HEC	CMB-C2B-C1B	-2.92	123.97	128.46
3	D	201	HEC	CMC-C2C-C3C	2.78	129.09	125.82
3	A	301	HEC	CMB-C2B-C3B	2.78	129.09	125.82
3	C	301	HEC	CMB-C2B-C3B	2.73	129.03	125.82
3	C	301	HEC	CMC-C2C-C3C	2.65	128.94	125.82
3	B	201	HEC	CMB-C2B-C3B	2.60	128.88	125.82
3	B	201	HEC	CMC-C2C-C3C	2.51	128.78	125.82
3	A	301	HEC	CMC-C2C-C3C	2.45	128.70	125.82
3	D	201	HEC	CBD-CAD-C3D	-2.42	108.50	112.62
3	B	201	HEC	C1D-C2D-C3D	-2.26	105.42	107.00
3	D	201	HEC	CMB-C2B-C3B	2.24	128.45	125.82
3	C	301	HEC	CBD-CAD-C3D	-2.18	108.90	112.62
3	B	201	HEC	CBD-CAD-C3D	-2.13	108.98	112.62
3	A	301	HEC	C1D-C2D-C3D	-2.13	105.52	107.00

There are no chirality outliers.

All (6) torsion outliers are listed below:

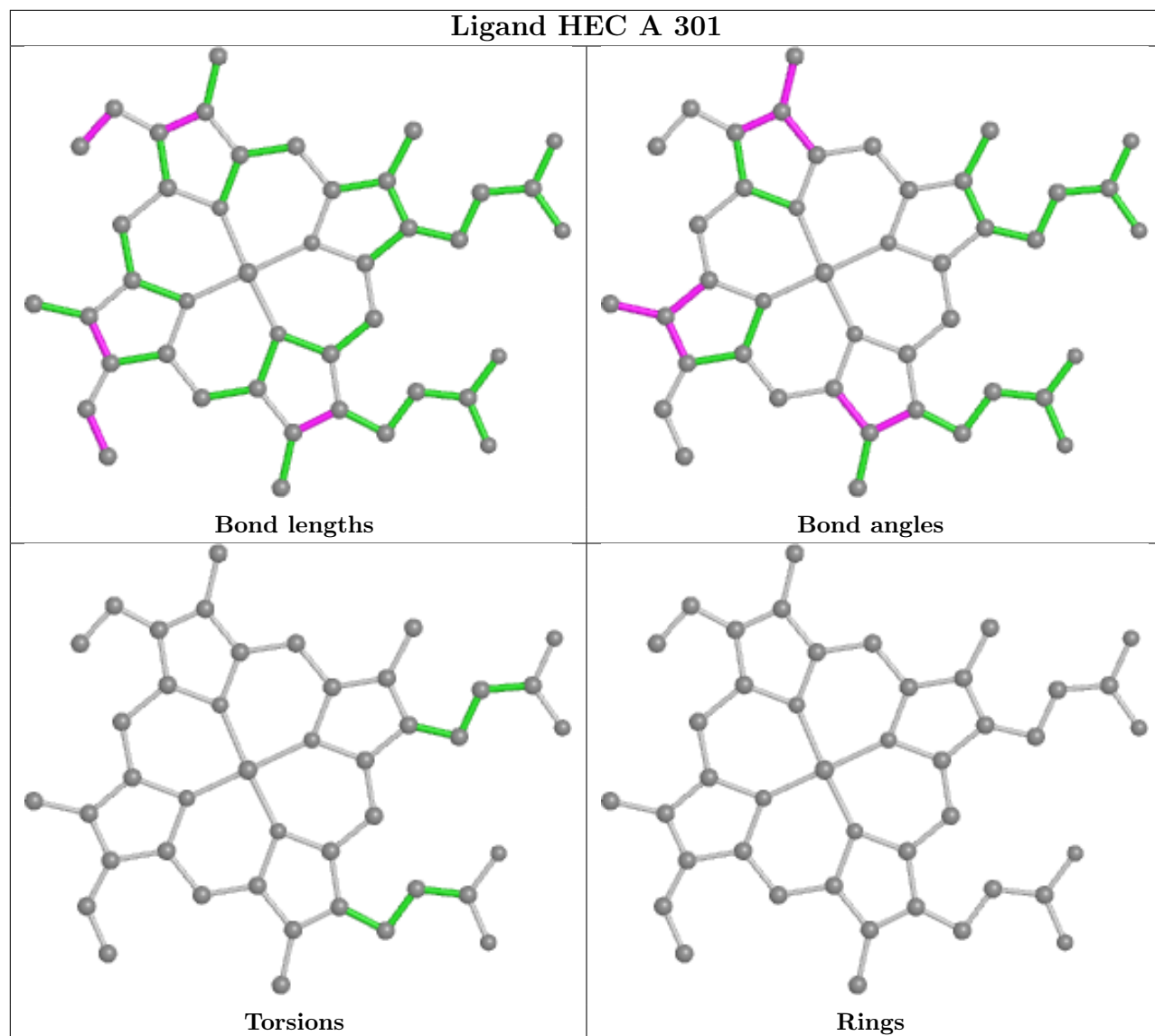
Mol	Chain	Res	Type	Atoms
3	C	301	HEC	C1A-C2A-CAA-CBA
3	C	301	HEC	C3A-C2A-CAA-CBA
3	D	201	HEC	CAA-CBA-CGA-O2A
3	D	201	HEC	CAA-CBA-CGA-O1A
3	B	201	HEC	CAA-CBA-CGA-O2A
3	C	301	HEC	CAD-CBD-CGD-O2D

There are no ring outliers.

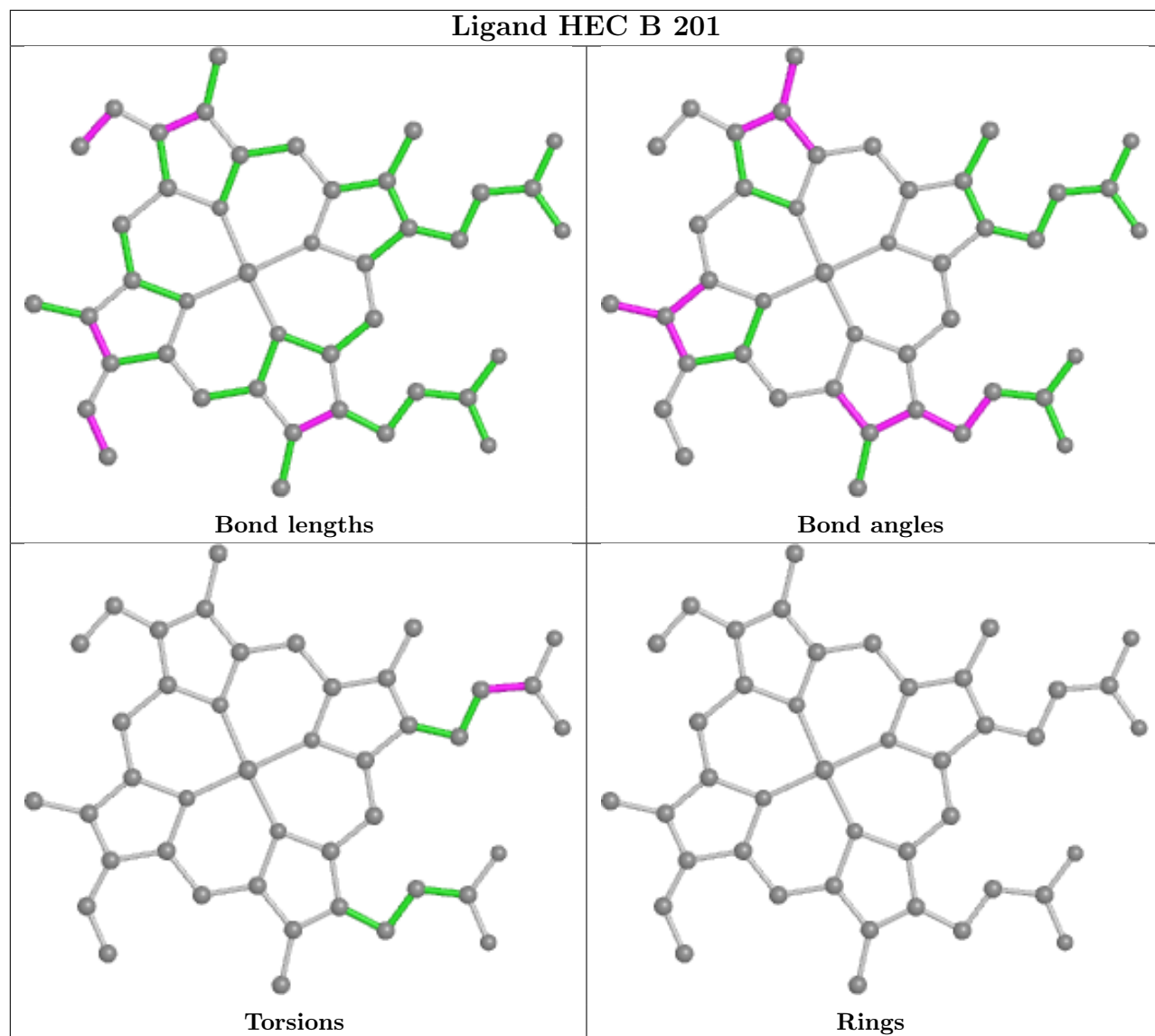
4 monomers are involved in 8 short contacts:

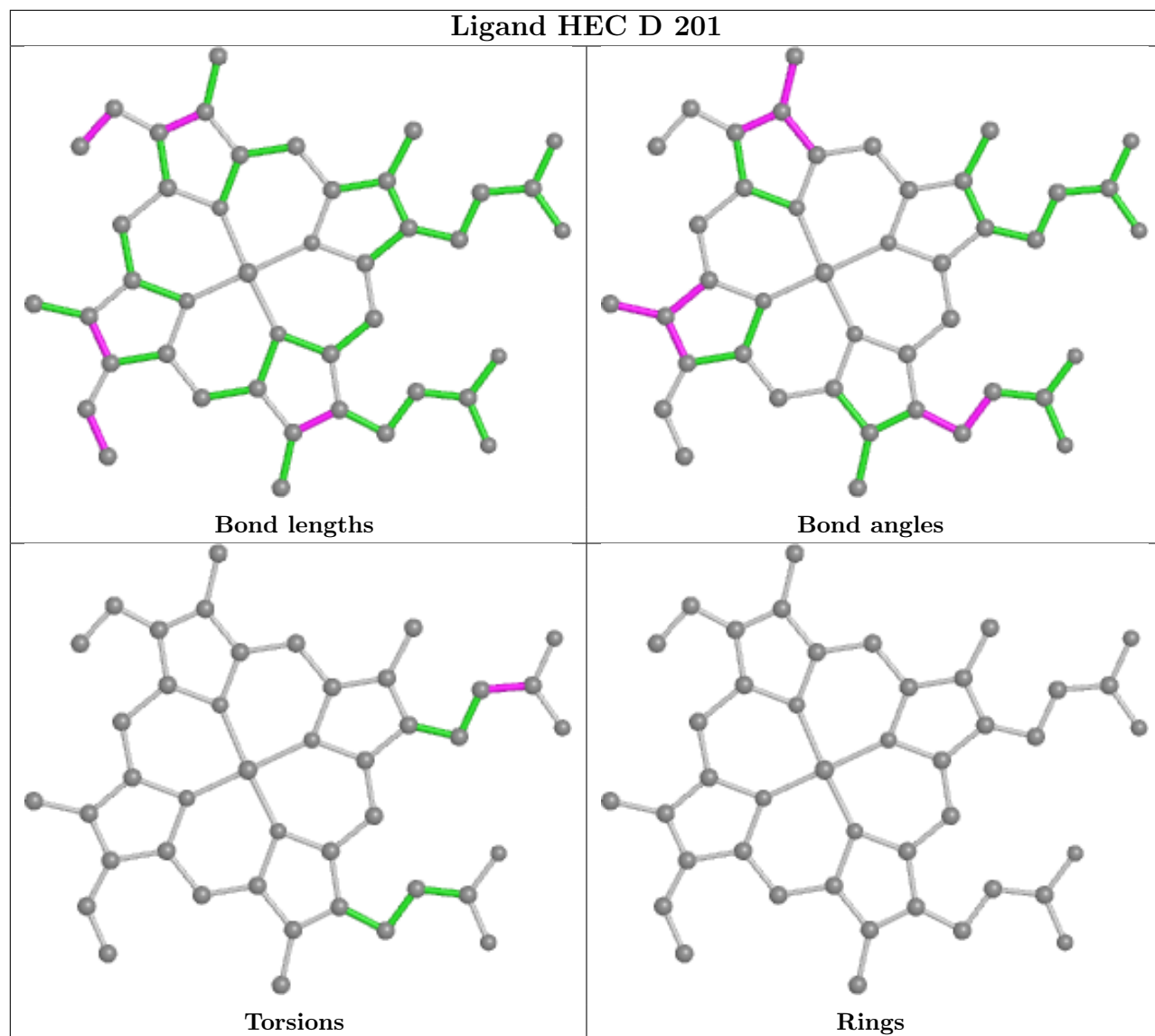
Mol	Chain	Res	Type	Clashes	Symm-Clashes
3	A	301	HEC	2	0
3	B	201	HEC	1	0
3	D	201	HEC	3	0
3	C	301	HEC	2	0

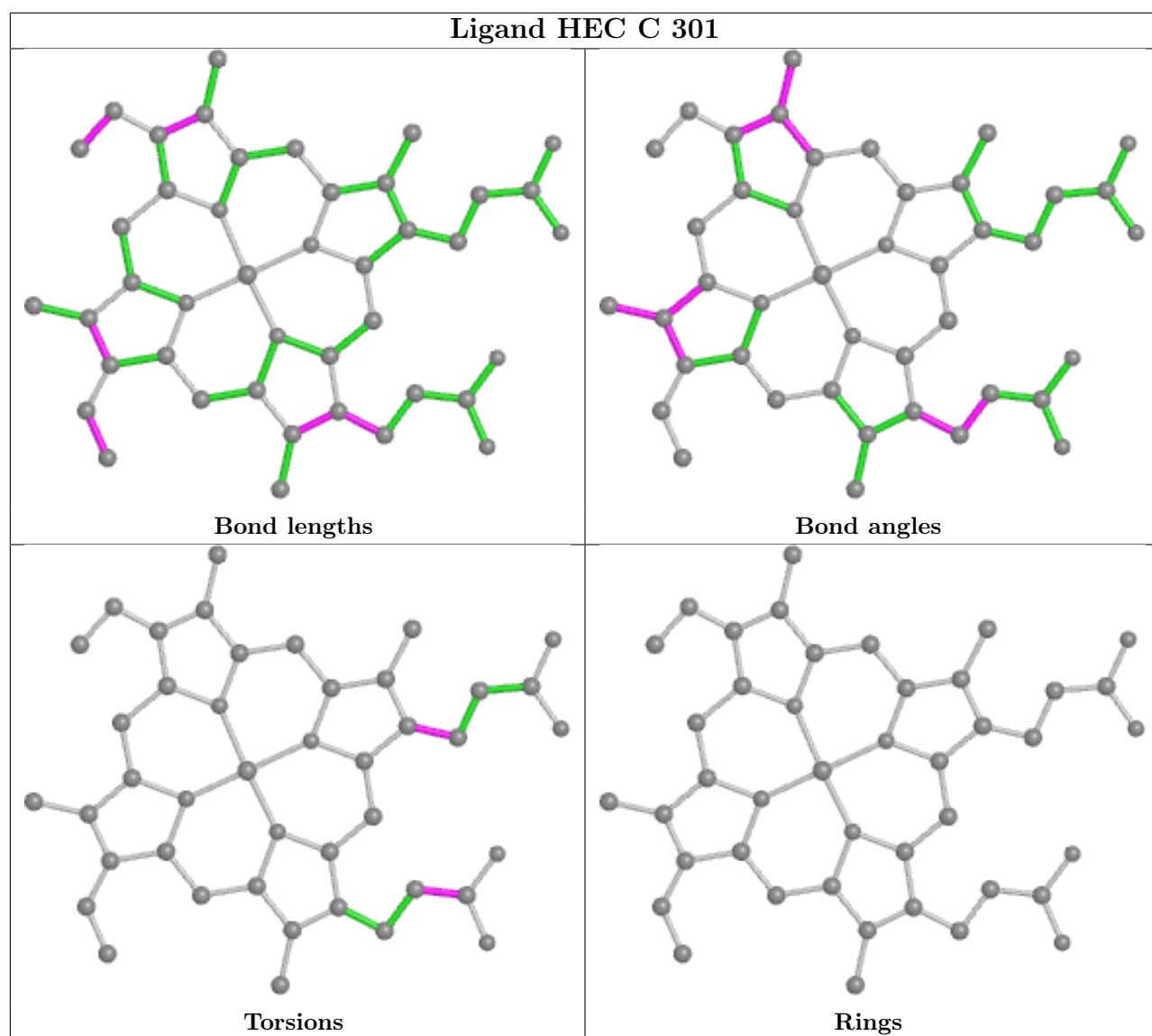
The following is a two-dimensional graphical depiction of Mogul quality analysis of bond lengths, bond angles, torsion angles, and ring geometry for all instances of the Ligand of Interest. In addition, ligands with molecular weight  $> 250$  and outliers as shown on the validation Tables will also be included. For torsion angles, if less than 5% of the Mogul distribution of torsion angles is within 10 degrees of the torsion angle in question, then that torsion angle is considered an outlier. Any bond that is central to one or more torsion angles identified as an outlier by Mogul will be highlighted in the graph. For rings, the root-mean-square deviation (RMSD) between the ring in question and similar rings identified by Mogul is calculated over all ring torsion angles. If the average RMSD is greater than 60 degrees and the minimal RMSD between the ring in question and any Mogul-identified rings is also greater than 60 degrees, then that ring is considered an outlier. The outliers are highlighted in purple. The color gray indicates Mogul did not find sufficient equivalents in the CSD to analyse the geometry.











## 5.7 Other polymers [\(i\)](#)

There are no such residues in this entry.

## 5.8 Polymer linkage issues [\(i\)](#)

There are no chain breaks in this entry.

## 6 Fit of model and data

### 6.1 Protein, DNA and RNA chains

Unable to reproduce the depositors R factor - this section is therefore empty.

### 6.2 Non-standard residues in protein, DNA, RNA chains

Unable to reproduce the depositors R factor - this section is therefore empty.

### 6.3 Carbohydrates

Unable to reproduce the depositors R factor - this section is therefore empty.

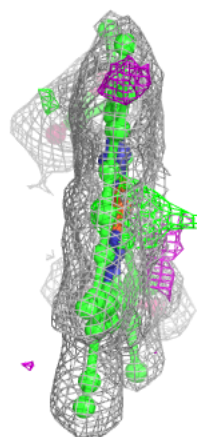
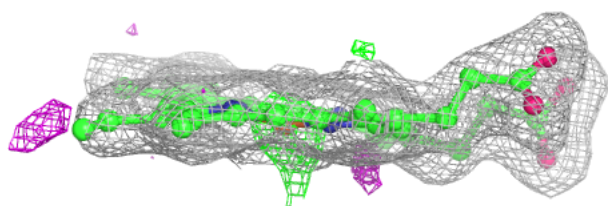
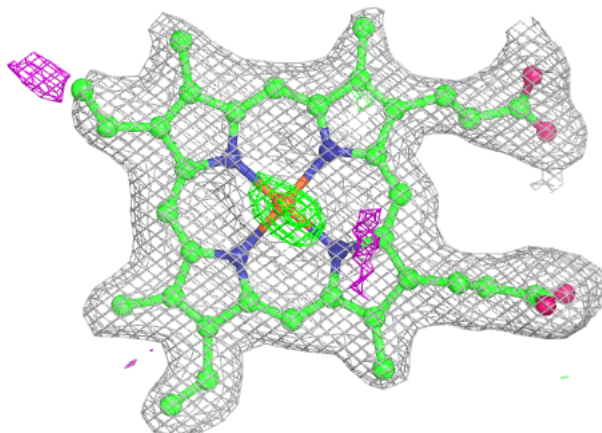
### 6.4 Ligands

Unable to reproduce the depositors R factor - this section is therefore empty.

The following is a graphical depiction of the model fit to experimental electron density of all instances of the Ligand of Interest. In addition, ligands with molecular weight > 250 and outliers as shown on the geometry validation Tables will also be included. Each fit is shown from different orientation to approximate a three-dimensional view.

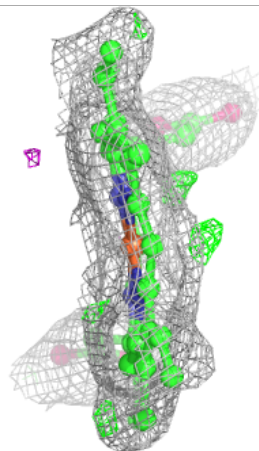
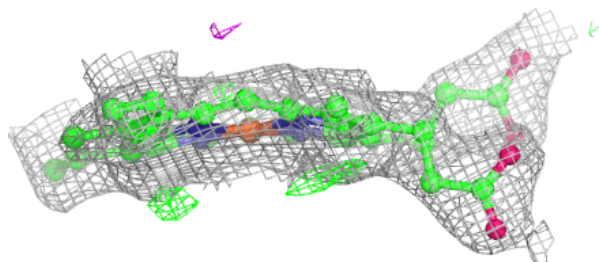
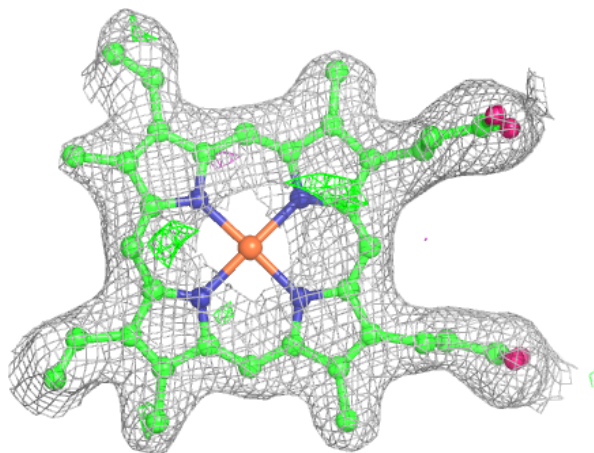
**Electron density around HEC A 301:**

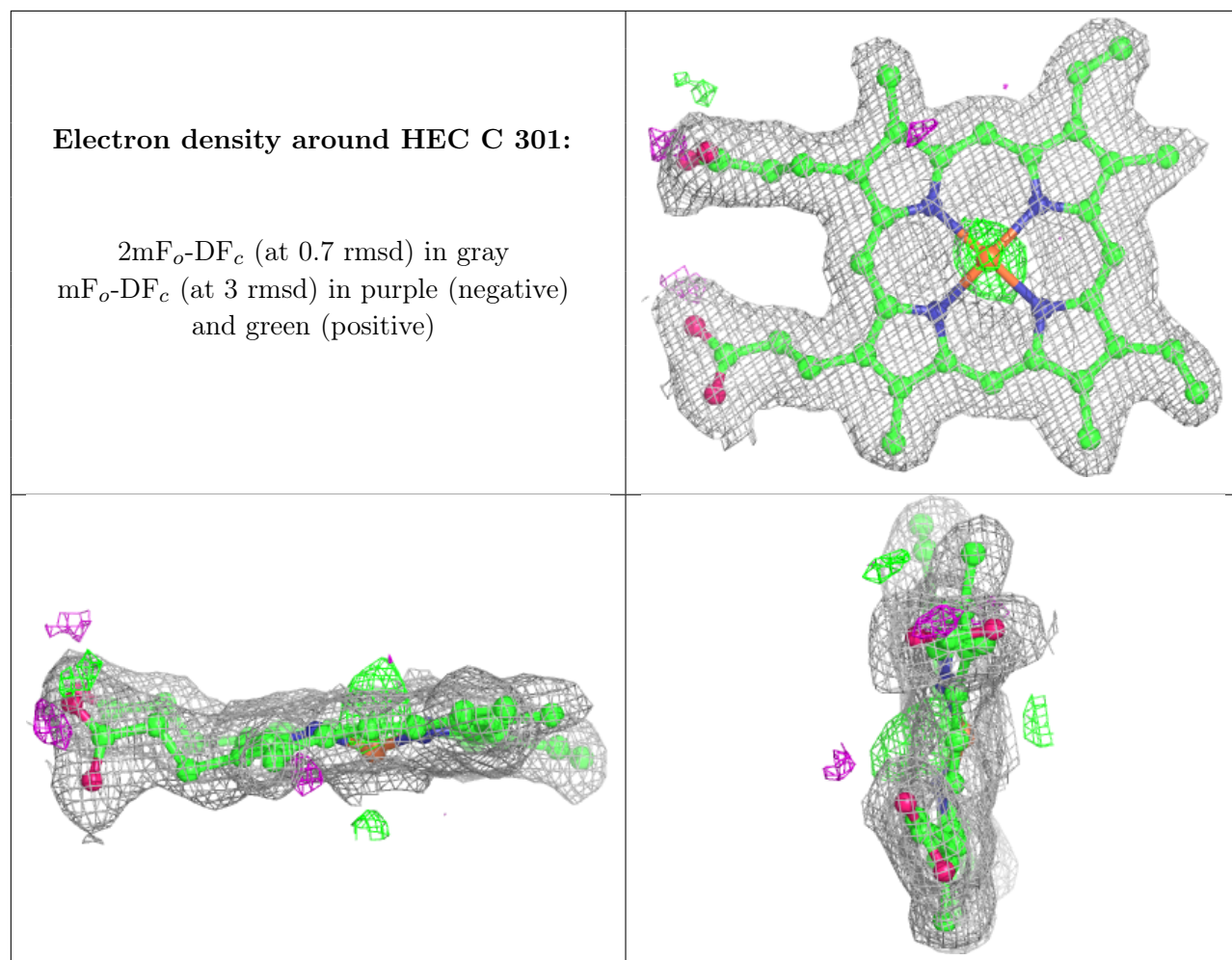
$2mF_o-DF_c$  (at 0.7 rmsd) in gray  
 $mF_o-DF_c$  (at 3 rmsd) in purple (negative)  
and green (positive)

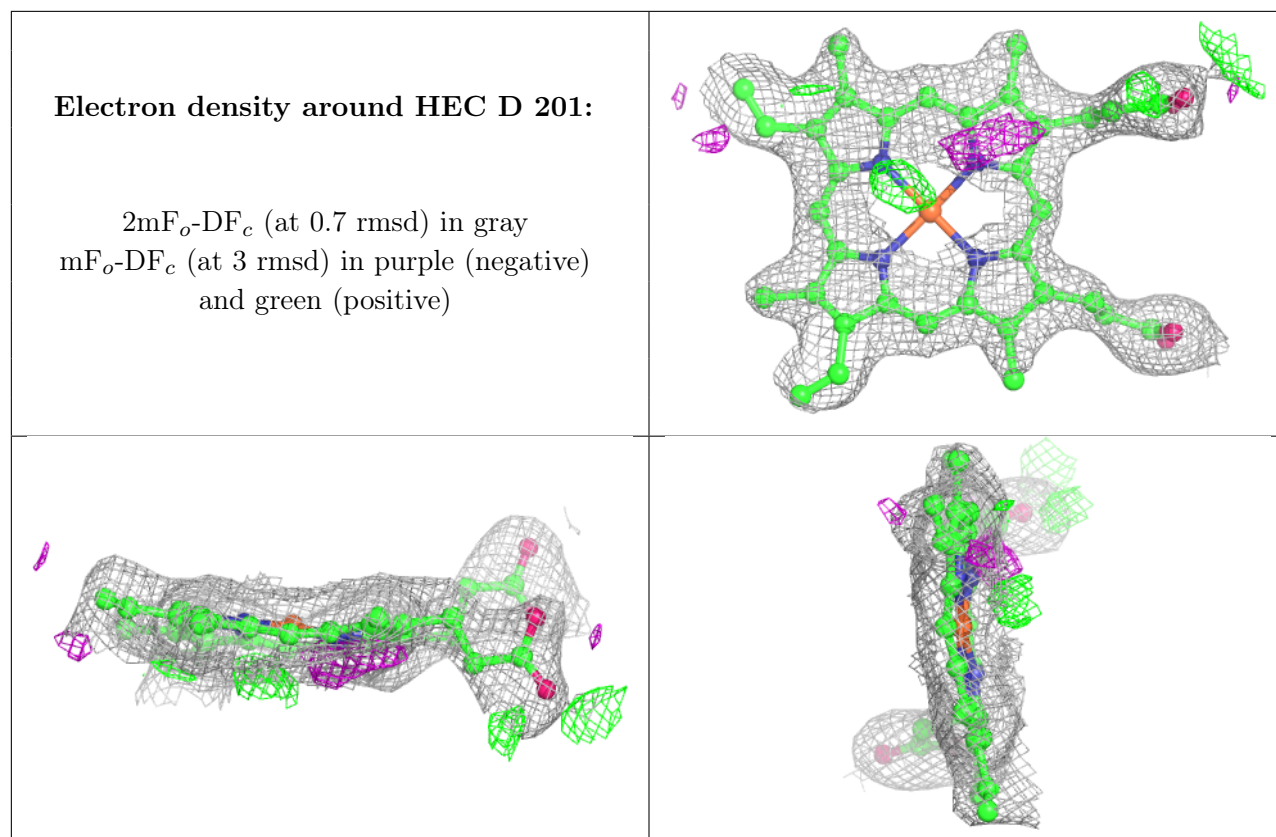


**Electron density around HEC B 201:**

$2mF_o-DF_c$  (at 0.7 rmsd) in gray  
 $mF_o-DF_c$  (at 3 rmsd) in purple (negative)  
and green (positive)







## 6.5 Other polymers [i](#)

Unable to reproduce the depositors R factor - this section is therefore empty.