



Full wwPDB X-ray Structure Validation Report ⓘ

Mar 8, 2018 – 10:44 pm GMT

PDB ID : 2CLQ
Title : Structure of mitogen-activated protein kinase kinase kinase 5
Authors : Bunkoczi, G.; Salah, E.; Fedorov, O.; Pike, A.; Gileadi, O.; von Delft, F.;
Arrowsmith, C.; Edwards, A.; Sundstrom, M.; Weigelt, J.; Knapp, S.
Deposited on : 2006-04-28
Resolution : 2.30 Å(reported)

This is a Full wwPDB X-ray Structure Validation Report for a publicly released PDB entry.

We welcome your comments at validation@mail.wwpdb.org

A user guide is available at

<https://www.wwpdb.org/validation/2017/XrayValidationReportHelp>

with specific help available everywhere you see the ⓘ symbol.

The following versions of software and data (see [references ⓘ](#)) were used in the production of this report:

MolProbity : 4.02b-467
Mogul : 1.7.3 (157068), CSD as539be (2018)
Xtrriage (Phenix) : 1.13
EDS : trunk30967
Percentile statistics : 20171227.v01 (using entries in the PDB archive December 27th 2017)
Refmac : 5.8.0158
CCP4 : 7.0 (Gargrove)
Ideal geometry (proteins) : Engh & Huber (2001)
Ideal geometry (DNA, RNA) : Parkinson et al. (1996)
Validation Pipeline (wwPDB-VP) : trunk30967

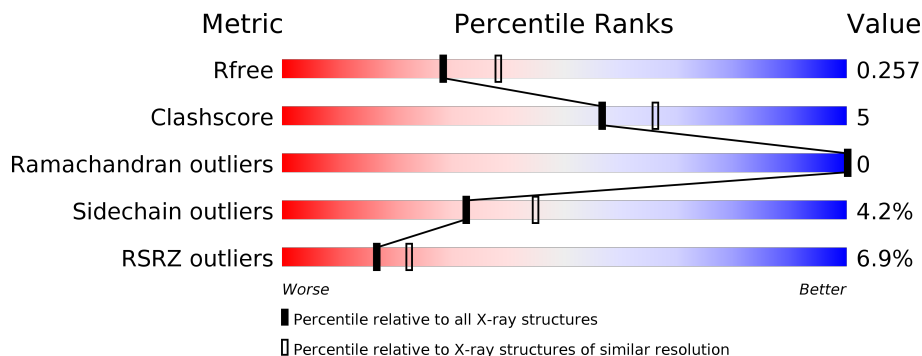
1 Overall quality at a glance

The following experimental techniques were used to determine the structure:

X-RAY DIFFRACTION

The reported resolution of this entry is 2.30 Å.

Percentile scores (ranging between 0-100) for global validation metrics of the entry are shown in the following graphic. The table shows the number of entries on which the scores are based.



Metric	Whole archive (#Entries)	Similar resolution (#Entries, resolution range(Å))
R_{free}	111664	4477 (2.30-2.30)
Clashscore	122126	5072 (2.30-2.30)
Ramachandran outliers	120053	5022 (2.30-2.30)
Sidechain outliers	120020	5021 (2.30-2.30)
RSRZ outliers	108989	4374 (2.30-2.30)

The table below summarises the geometric issues observed across the polymeric chains and their fit to the electron density. The red, orange, yellow and green segments on the lower bar indicate the fraction of residues that contain outliers for ≥ 3 , 2, 1 and 0 types of geometric quality criteria. A grey segment represents the fraction of residues that are not modelled. The numeric value for each fraction is indicated below the corresponding segment, with a dot representing fractions $\leq 5\%$. The upper red bar (where present) indicates the fraction of residues that have poor fit to the electron density. The numeric value is given above the bar.

Mol	Chain	Length	Quality of chain
1	A	295	 5% 79% 10% • 11%
1	B	295	 7% 77% 10% • 12%

2 Entry composition i

There are 3 unique types of molecules in this entry. The entry contains 4212 atoms, of which 0 are hydrogens and 0 are deuteriums.

In the tables below, the ZeroOcc column contains the number of atoms modelled with zero occupancy, the AltConf column contains the number of residues with at least one atom in alternate conformation and the Trace column contains the number of residues modelled with at most 2 atoms.

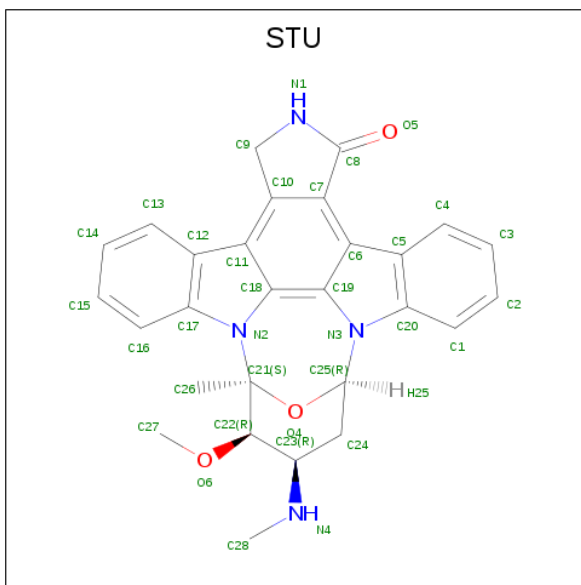
- Molecule 1 is a protein called MITOGEN-ACTIVATED PROTEIN KINASE KINASE KINASE 5.

Mol	Chain	Residues	Atoms					ZeroOcc	AltConf	Trace
			Total	C	N	O	S			
1	A	263	Total 2030	C 1306	N 331	O 384	S 9	0	0	0
1	B	259	Total 1963	C 1258	N 319	O 377	S 9	0	1	0

There are 4 discrepancies between the modelled and reference sequences:

Chain	Residue	Modelled	Actual	Comment	Reference
A	657	SER	-	expression tag	UNP Q99683
A	658	MET	-	expression tag	UNP Q99683
B	657	SER	-	expression tag	UNP Q99683
B	658	MET	-	expression tag	UNP Q99683

- Molecule 2 is STAUROSPORINE (three-letter code: STU) (formula: $C_{28}H_{26}N_4O_3$).



Mol	Chain	Residues	Atoms				ZeroOcc	AltConf
2	A	1	Total	C	N	O	0	0
			35	28	4	3		
2	B	1	Total	C	N	O	0	0
			35	28	4	3		


- Molecule 3 is water.

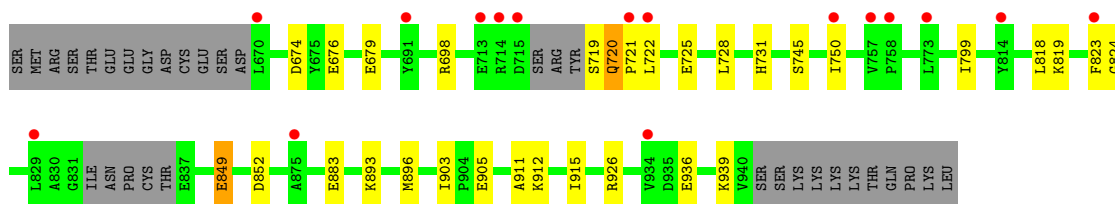
Mol	Chain	Residues	Atoms		ZeroOcc	AltConf
3	A	93	Total	O	0	0
			93	93		
3	B	56	Total	O	0	0
			56	56		

3 Residue-property plots [i](#)


These plots are drawn for all protein, RNA and DNA chains in the entry. The first graphic for a chain summarises the proportions of the various outlier classes displayed in the second graphic. The second graphic shows the sequence view annotated by issues in geometry and electron density. Residues are color-coded according to the number of geometric quality criteria for which they contain at least one outlier: green = 0, yellow = 1, orange = 2 and red = 3 or more. A red dot above a residue indicates a poor fit to the electron density ($RSRZ > 2$). Stretches of 2 or more consecutive residues without any outlier are shown as a green connector. Residues present in the sample, but not in the model, are shown in grey.

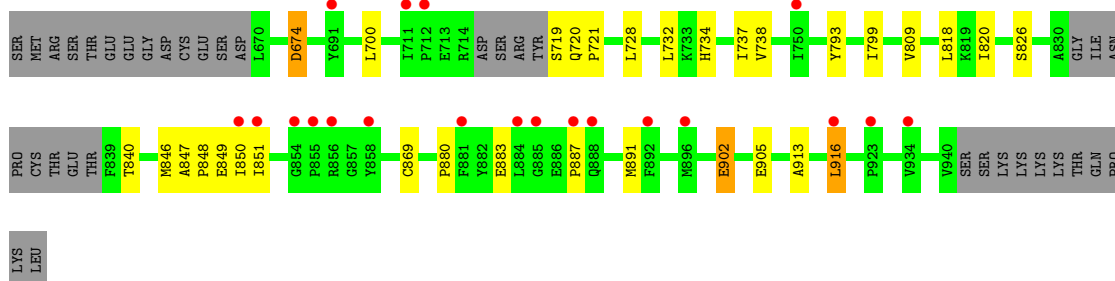
- Molecule 1: MITOGEN-ACTIVATED PROTEIN KINASE KINASE KINASE 5

Chain A: 



- Molecule 1: MITOGEN-ACTIVATED PROTEIN KINASE KINASE KINASE 5

Chain B: 



4 Data and refinement statistics

Property	Value	Source
Space group	P 65 2 2	Depositor
Cell constants a, b, c, α , β , γ	78.61Å 78.61Å 423.28Å 90.00° 90.00° 120.00°	Depositor
Resolution (Å)	50.00 – 2.30 45.21 – 2.30	Depositor EDS
% Data completeness (in resolution range)	99.3 (50.00-2.30) 99.3 (45.21-2.30)	Depositor EDS
R_{merge}	0.10	Depositor
R_{sym}	(Not available)	Depositor
$\langle I/\sigma(I) \rangle$ ¹	1.59 (at 2.29Å)	Xtrriage
Refinement program	REFMAC 5.2.0019	Depositor
R, R_{free}	0.201 , 0.257 0.207 , 0.257	Depositor DCC
R_{free} test set	1778 reflections (4.98%)	wwPDB-VP
Wilson B-factor (Å ²)	47.2	Xtrriage
Anisotropy	0.016	Xtrriage
Bulk solvent k_{sol} (e/Å ³), B_{sol} (Å ²)	0.32 , 53.7	EDS
L-test for twinning ²	$\langle L \rangle = 0.45$, $\langle L^2 \rangle = 0.28$	Xtrriage
Estimated twinning fraction	No twinning to report.	Xtrriage
F_o, F_c correlation	0.94	EDS
Total number of atoms	4212	wwPDB-VP
Average B, all atoms (Å ²)	38.0	wwPDB-VP

Xtrriage's analysis on translational NCS is as follows: *The largest off-origin peak in the Patterson function is 4.54% of the height of the origin peak. No significant pseudotranslation is detected.*

¹Intensities estimated from amplitudes.

²Theoretical values of $\langle |L| \rangle$, $\langle L^2 \rangle$ for acentric reflections are 0.5, 0.333 respectively for untwinned datasets, and 0.375, 0.2 for perfectly twinned datasets.

5 Model quality [i](#)

5.1 Standard geometry [i](#)

Bond lengths and bond angles in the following residue types are not validated in this section: STU

The Z score for a bond length (or angle) is the number of standard deviations the observed value is removed from the expected value. A bond length (or angle) with $|Z| > 5$ is considered an outlier worth inspection. RMSZ is the root-mean-square of all Z scores of the bond lengths (or angles).

Mol	Chain	Bond lengths		Bond angles	
		RMSZ	# Z >5	RMSZ	# Z >5
1	A	0.70	0/2073	0.77	1/2801 (0.0%)
1	B	0.61	0/2008	0.72	2/2723 (0.1%)
All	All	0.66	0/4081	0.75	3/5524 (0.1%)

There are no bond length outliers.

All (3) bond angle outliers are listed below:

Mol	Chain	Res	Type	Atoms	Z	Observed(°)	Ideal(°)
1	B	674[A]	ASP	CB-CG-OD1	6.92	124.53	118.30
1	B	674[B]	ASP	CB-CG-OD1	6.92	124.53	118.30
1	A	674	ASP	CB-CG-OD2	-5.79	113.09	118.30

There are no chirality outliers.

There are no planarity outliers.

5.2 Too-close contacts [i](#)

In the following table, the Non-H and H(model) columns list the number of non-hydrogen atoms and hydrogen atoms in the chain respectively. The H(added) column lists the number of hydrogen atoms added and optimized by MolProbity. The Clashes column lists the number of clashes within the asymmetric unit, whereas Symm-Clashes lists symmetry related clashes.

Mol	Chain	Non-H	H(model)	H(added)	Clashes	Symm-Clashes
1	A	2030	0	1966	15	0
1	B	1963	0	1849	22	0
2	A	35	0	26	5	0
2	B	35	0	26	1	0
3	A	93	0	0	4	0
3	B	56	0	0	0	0

Continued on next page...

Continued from previous page...

Mol	Chain	Non-H	H(model)	H(added)	Clashes	Symm-Clashes
All	All	4212	0	3867	43	0

The all-atom clashscore is defined as the number of clashes found per 1000 atoms (including hydrogen atoms). The all-atom clashscore for this structure is 5.

All (43) close contacts within the same asymmetric unit are listed below, sorted by their clash magnitude.

Atom-1	Atom-2	Interatomic distance (Å)	Clash overlap (Å)
1:B:840:THR:HG23	1:B:846:MET:CE	2.07	0.85
1:B:840:THR:HG23	1:B:846:MET:HE3	1.60	0.83
2:A:1941:STU:H16	2:A:1941:STU:H261	1.64	0.78
1:B:840:THR:CG2	1:B:846:MET:CE	2.62	0.78
1:B:840:THR:CG2	1:B:846:MET:HE3	2.20	0.71
2:B:1941:STU:H261	2:B:1941:STU:H16	1.75	0.67
1:B:734:HIS:HB3	1:B:737:ILE:HD13	1.80	0.62
1:A:722:LEU:CD2	1:A:750:ILE:HD13	2.30	0.60
1:B:850:ILE:HD13	1:B:850:ILE:N	2.17	0.58
1:B:846:MET:SD	1:B:851:ILE:HD13	2.45	0.55
1:A:698:ARG:HH21	1:A:698:ARG:HG2	1.72	0.53
1:A:819:LYS:NZ	3:A:2069:HOH:O	2.33	0.53
1:B:720:GLN:N	1:B:721:PRO:CD	2.72	0.53
1:A:731:HIS:HB2	3:A:2032:HOH:O	2.08	0.52
1:A:722:LEU:HD21	1:A:750:ILE:HD13	1.89	0.52
1:B:869:CYS:HB3	1:B:880:PRO:HG2	1.92	0.52
2:A:1941:STU:C16	2:A:1941:STU:H261	2.39	0.52
2:A:1941:STU:C28	3:A:2047:HOH:O	2.59	0.51
1:B:674[B]:ASP:OD2	1:B:700:LEU:HD21	2.11	0.50
1:B:728:LEU:HD11	1:B:799:ILE:CD1	2.42	0.49
1:A:849:GLU:OE2	1:A:926:ARG:NH1	2.47	0.48
1:A:728:LEU:HD11	1:A:799:ILE:HD13	1.96	0.47
1:B:887:PRO:O	1:B:891:MET:HG2	2.14	0.47
1:B:732:LEU:HD22	1:B:793:TYR:HE1	1.80	0.46
1:B:847:ALA:HB1	1:B:848:PRO:HD2	1.96	0.46
1:B:840:THR:HG21	1:B:846:MET:CE	2.45	0.46
1:B:849:GLU:HG2	1:B:850:ILE:HD13	1.98	0.45
1:A:676:GLU:HG2	3:A:2023:HOH:O	2.16	0.45
1:A:722:LEU:HD23	1:A:750:ILE:HD13	1.98	0.45
1:A:903:ILE:HG21	1:A:912:LYS:HG2	1.98	0.45
1:A:911:ALA:O	1:A:915:ILE:HG13	2.16	0.45
2:A:1941:STU:C16	2:A:1941:STU:C26	2.97	0.43
1:B:913:ALA:HA	1:B:916:LEU:HD23	2.01	0.42

Continued on next page...

Continued from previous page...

Atom-1	Atom-2	Interatomic distance (Å)	Clash overlap (Å)
1:B:883:GLU:OE1	1:B:902:GLU:HB3	2.19	0.41
1:B:809:VAL:CG1	1:B:818:LEU:HD11	2.51	0.41
1:A:720:GLN:N	1:A:721:PRO:CD	2.84	0.41
2:A:1941:STU:C17	2:A:1941:STU:H273	2.51	0.41
1:A:679:GLU:H	1:A:679:GLU:CD	2.24	0.41
1:B:809:VAL:HG13	1:B:818:LEU:HG	2.03	0.41
1:A:725:GLU:OE1	1:A:824:GLY:N	2.54	0.40
1:B:720:GLN:N	1:B:721:PRO:HD2	2.36	0.40
1:A:818:LEU:HD23	1:A:818:LEU:C	2.42	0.40
1:B:738:VAL:HG23	1:B:820:ILE:O	2.21	0.40

There are no symmetry-related clashes.

5.3 Torsion angles [i](#)

5.3.1 Protein backbone [i](#)

In the following table, the Percentiles column shows the percent Ramachandran outliers of the chain as a percentile score with respect to all X-ray entries followed by that with respect to entries of similar resolution.

The Analysed column shows the number of residues for which the backbone conformation was analysed, and the total number of residues.

Mol	Chain	Analysed	Favoured	Allowed	Outliers	Percentiles	
1	A	257/295 (87%)	244 (95%)	13 (5%)	0	100	100
1	B	254/295 (86%)	243 (96%)	11 (4%)	0	100	100
All	All	511/590 (87%)	487 (95%)	24 (5%)	0	100	100

There are no Ramachandran outliers to report.

5.3.2 Protein sidechains [i](#)

In the following table, the Percentiles column shows the percent sidechain outliers of the chain as a percentile score with respect to all X-ray entries followed by that with respect to entries of similar resolution.

The Analysed column shows the number of residues for which the sidechain conformation was analysed, and the total number of residues.

Mol	Chain	Analysed	Rotameric	Outliers	Percentiles	
1	A	208/254 (82%)	196 (94%)	12 (6%)	22	30
1	B	196/254 (77%)	191 (97%)	5 (3%)	49	66
All	All	404/508 (80%)	387 (96%)	17 (4%)	32	45

All (17) residues with a non-rotameric sidechain are listed below:

Mol	Chain	Res	Type
1	A	719	SER
1	A	720	GLN
1	A	745	SER
1	A	823	PHE
1	A	849	GLU
1	A	852	ASP
1	A	883	GLU
1	A	893	LYS
1	A	896	MET
1	A	905	GLU
1	A	936	GLU
1	A	939	LYS
1	B	719	SER
1	B	826	SER
1	B	902	GLU
1	B	905	GLU
1	B	916	LEU

Some sidechains can be flipped to improve hydrogen bonding and reduce clashes. There are no such sidechains identified.

5.3.3 RNA [i](#)

There are no RNA molecules in this entry.

5.4 Non-standard residues in protein, DNA, RNA chains [i](#)

There are no non-standard protein/DNA/RNA residues in this entry.

5.5 Carbohydrates [i](#)

There are no carbohydrates in this entry.

5.6 Ligand geometry [i](#)

2 ligands are modelled in this entry.

In the following table, the Counts columns list the number of bonds (or angles) for which Mogul statistics could be retrieved, the number of bonds (or angles) that are observed in the model and the number of bonds (or angles) that are defined in the Chemical Component Dictionary. The Link column lists molecule types, if any, to which the group is linked. The Z score for a bond length (or angle) is the number of standard deviations the observed value is removed from the expected value. A bond length (or angle) with $|Z| > 2$ is considered an outlier worth inspection. RMSZ is the root-mean-square of all Z scores of the bond lengths (or angles).

Mol	Type	Chain	Res	Link	Bond lengths			Bond angles		
					Counts	RMSZ	# Z > 2	Counts	RMSZ	# Z > 2
2	STU	A	1941	-	30,42,42	1.22	3 (10%)	30,68,68	1.68	7 (23%)
2	STU	B	1941	-	30,42,42	1.15	0	30,68,68	1.85	9 (30%)

In the following table, the Chirals column lists the number of chiral outliers, the number of chiral centers analysed, the number of these observed in the model and the number defined in the Chemical Component Dictionary. Similar counts are reported in the Torsion and Rings columns. '-' means no outliers of that kind were identified.

Mol	Type	Chain	Res	Link	Chirals	Torsions	Rings
2	STU	A	1941	-	-	0/4/42/42	0/0/8/8
2	STU	B	1941	-	-	0/4/42/42	0/0/8/8

All (3) bond length outliers are listed below:

Mol	Chain	Res	Type	Atoms	Z	Observed(Å)	Ideal(Å)
2	A	1941	STU	C6-C19	-2.07	1.40	1.42
2	A	1941	STU	C26-C21	2.44	1.54	1.51
2	A	1941	STU	O6-C22	3.58	1.48	1.42

All (16) bond angle outliers are listed below:

Mol	Chain	Res	Type	Atoms	Z	Observed(°)	Ideal(°)
2	B	1941	STU	C9-N1-C8	-3.66	109.83	113.78
2	A	1941	STU	C9-N1-C8	-3.53	109.98	113.78
2	A	1941	STU	C9-C10-C7	-3.39	106.58	109.61
2	B	1941	STU	C9-C10-C7	-3.36	106.60	109.61
2	B	1941	STU	C14-C13-C12	-3.18	115.36	120.83
2	A	1941	STU	O5-C8-C7	-3.04	125.72	129.32
2	B	1941	STU	O5-C8-C7	-3.02	125.74	129.32
2	B	1941	STU	C3-C4-C5	-2.69	116.20	120.83

Continued on next page...

Continued from previous page...

Mol	Chain	Res	Type	Atoms	Z	Observed(°)	Ideal(°)
2	A	1941	STU	C3-C4-C5	-2.63	116.31	120.83
2	A	1941	STU	C24-C23-C22	-2.18	105.30	109.41
2	B	1941	STU	C4-C5-C20	2.15	122.11	119.39
2	B	1941	STU	O4-C25-C24	2.24	115.54	112.31
2	B	1941	STU	C13-C12-C17	2.79	122.92	119.39
2	B	1941	STU	C10-C9-N1	2.88	105.18	101.86
2	A	1941	STU	C10-C9-N1	2.93	105.24	101.86
2	A	1941	STU	O4-C25-C24	3.17	116.89	112.31

There are no chirality outliers.

There are no torsion outliers.

There are no ring outliers.

2 monomers are involved in 6 short contacts:

Mol	Chain	Res	Type	Clashes	Symm-Clashes
2	A	1941	STU	5	0
2	B	1941	STU	1	0

5.7 Other polymers [i](#)

There are no such residues in this entry.

5.8 Polymer linkage issues [i](#)

There are no chain breaks in this entry.

6 Fit of model and data

6.1 Protein, DNA and RNA chains

In the following table, the column labelled ‘#RSRZ > 2’ contains the number (and percentage) of RSRZ outliers, followed by percent RSRZ outliers for the chain as percentile scores relative to all X-ray entries and entries of similar resolution. The OWAB column contains the minimum, median, 95th percentile and maximum values of the occupancy-weighted average B-factor per residue. The column labelled ‘Q < 0.9’ lists the number of (and percentage) of residues with an average occupancy less than 0.9.

Mol	Chain	Analysed	<RSRZ>	#RSRZ>2	OWAB(Å ²)	Q<0.9
1	A	263/295 (89%)	0.52	16 (6%) 21 27	26, 37, 55, 65	0
1	B	259/295 (87%)	0.45	20 (7%) 13 18	26, 37, 54, 61	0
All	All	522/590 (88%)	0.48	36 (6%) 17 22	26, 37, 55, 65	0

All (36) RSRZ outliers are listed below:

Mol	Chain	Res	Type	RSRZ
1	B	855	PRO	7.5
1	B	851	ILE	6.0
1	A	691	TYR	5.3
1	B	854	GLY	5.3
1	B	887	PRO	4.6
1	B	884	LEU	3.9
1	B	858	TYR	3.8
1	B	850	ILE	3.5
1	A	722	LEU	3.5
1	A	823	PHE	3.4
1	A	934	VAL	3.4
1	B	888	GLN	3.0
1	B	856	ARG	3.0
1	B	896	MET	2.8
1	B	892	PHE	2.7
1	B	691	TYR	2.7
1	A	670	LEU	2.7
1	B	711	ILE	2.7
1	B	881	PHE	2.7
1	A	714	ARG	2.6
1	B	916	LEU	2.6
1	A	758	PRO	2.5
1	A	829	LEU	2.4
1	A	721	PRO	2.4

Continued on next page...

Continued from previous page...

Mol	Chain	Res	Type	RSRZ
1	A	713	GLU	2.4
1	A	750	ILE	2.4
1	B	750	ILE	2.4
1	B	934	VAL	2.3
1	A	715	ASP	2.3
1	A	773	LEU	2.3
1	A	814	TYR	2.3
1	B	885	GLY	2.2
1	B	712	PRO	2.1
1	A	875	ALA	2.1
1	A	757	VAL	2.0
1	B	923	PRO	2.0

6.2 Non-standard residues in protein, DNA, RNA chains [i](#)

There are no non-standard protein/DNA/RNA residues in this entry.

6.3 Carbohydrates [i](#)

There are no carbohydrates in this entry.

6.4 Ligands [i](#)

In the following table, the Atoms column lists the number of modelled atoms in the group and the number defined in the chemical component dictionary. The B-factors column lists the minimum, median, 95th percentile and maximum values of B factors of atoms in the group. The column labelled 'Q< 0.9' lists the number of atoms with occupancy less than 0.9.

Mol	Type	Chain	Res	Atoms	RSCC	RSR	B-factors(Å ²)	Q<0.9
2	STU	A	1941	35/35	0.97	0.09	6,14,20,22	0
2	STU	B	1941	35/35	0.98	0.07	8,19,24,27	0

6.5 Other polymers [i](#)

There are no such residues in this entry.