



# Full wwPDB X-ray Structure Validation Report ⓘ

Apr 28, 2024 – 06:46 am BST

PDB ID : 4CMA  
Title : Crystal structure of pteridine reductase 1 (PTR1) from Trypanosoma brucei in ternary complex with cofactor and inhibitor  
Authors : Barrack, K.L.; Hunter, W.N.  
Deposited on : 2014-01-15  
Resolution : 1.85 Å(reported)

This is a Full wwPDB X-ray Structure Validation Report for a publicly released PDB entry.

We welcome your comments at [validation@mail.wwpdb.org](mailto:validation@mail.wwpdb.org)

A user guide is available at

<https://www.wwpdb.org/validation/2017/XrayValidationReportHelp>

with specific help available everywhere you see the ⓘ symbol.

The types of validation reports are described at

<http://www.wwpdb.org/validation/2017/FAQs#types>.

---

The following versions of software and data (see [references ⓘ](#)) were used in the production of this report:

MolProbity : 4.02b-467  
Mogul : 1.8.4, CSD as541be (2020)  
Xtrriage (Phenix) : 1.13  
EDS : 2.36.2  
buster-report : 1.1.7 (2018)  
Percentile statistics : 20191225.v01 (using entries in the PDB archive December 25th 2019)  
Refmac : 5.8.0158  
CCP4 : 7.0.044 (Gargrove)  
Ideal geometry (proteins) : Engh & Huber (2001)  
Ideal geometry (DNA, RNA) : Parkinson et al. (1996)  
Validation Pipeline (wwPDB-VP) : 2.36.2

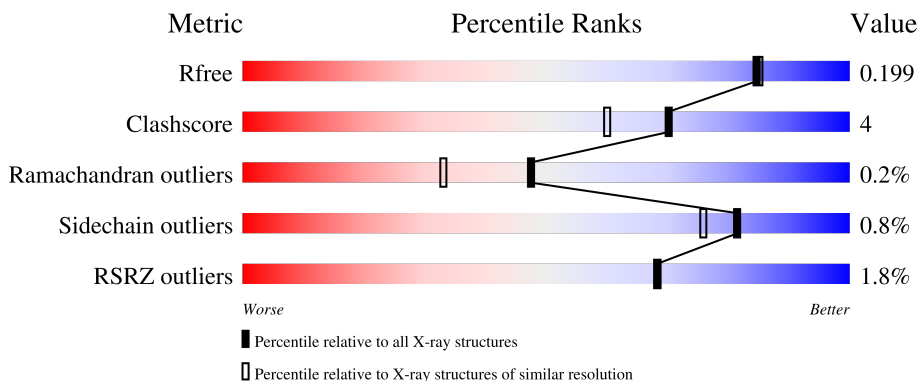
# 1 Overall quality at a glance

The following experimental techniques were used to determine the structure:

*X-RAY DIFFRACTION*

The reported resolution of this entry is 1.85 Å.

Percentile scores (ranging between 0-100) for global validation metrics of the entry are shown in the following graphic. The table shows the number of entries on which the scores are based.



Metric	Whole archive (#Entries)	Similar resolution (#Entries, resolution range(Å))
$R_{free}$	130704	2469 (1.86-1.86)
Clashscore	141614	2625 (1.86-1.86)
Ramachandran outliers	138981	2592 (1.86-1.86)
Sidechain outliers	138945	2592 (1.86-1.86)
RSRZ outliers	127900	2436 (1.86-1.86)

The table below summarises the geometric issues observed across the polymeric chains and their fit to the electron density. The red, orange, yellow and green segments of the lower bar indicate the fraction of residues that contain outliers for  $\geq 3$ , 2, 1 and 0 types of geometric quality criteria respectively. A grey segment represents the fraction of residues that are not modelled. The numeric value for each fraction is indicated below the corresponding segment, with a dot representing fractions  $\leq 5\%$ . The upper red bar (where present) indicates the fraction of residues that have poor fit to the electron density. The numeric value is given above the bar.

Mol	Chain	Length	Quality of chain
1	A	288	2% 79% 8% 13%
1	B	288	79% 8% 13%
1	C	288	2% 78% 9% 13%
1	D	288	81% 6% 13%

## 2 Entry composition [i](#)

There are 5 unique types of molecules in this entry. The entry contains 8564 atoms, of which 0 are hydrogens and 0 are deuteriums.

In the tables below, the ZeroOcc column contains the number of atoms modelled with zero occupancy, the AltConf column contains the number of residues with at least one atom in alternate conformation and the Trace column contains the number of residues modelled with at most 2 atoms.

- Molecule 1 is a protein called PTERIDINE REDUCTASE 1.

Mol	Chain	Residues	Atoms					ZeroOcc	AltConf	Trace
			Total	C	N	O	S			
1	A	250	1899	1194	334	359	12	0	7	0
1	B	250	1877	1179	331	356	11	0	3	0
1	C	250	1917	1207	336	362	12	0	9	0
1	D	250	1868	1173	329	355	11	0	2	0

There are 80 discrepancies between the modelled and reference sequences:

Chain	Residue	Modelled	Actual	Comment	Reference
A	-19	MET	-	expression tag	UNP O76290
A	-18	GLY	-	expression tag	UNP O76290
A	-17	SER	-	expression tag	UNP O76290
A	-16	SER	-	expression tag	UNP O76290
A	-15	HIS	-	expression tag	UNP O76290
A	-14	HIS	-	expression tag	UNP O76290
A	-13	HIS	-	expression tag	UNP O76290
A	-12	HIS	-	expression tag	UNP O76290
A	-11	HIS	-	expression tag	UNP O76290
A	-10	HIS	-	expression tag	UNP O76290
A	-9	SER	-	expression tag	UNP O76290
A	-8	SER	-	expression tag	UNP O76290
A	-7	GLY	-	expression tag	UNP O76290
A	-6	LEU	-	expression tag	UNP O76290
A	-5	VAL	-	expression tag	UNP O76290
A	-4	PRO	-	expression tag	UNP O76290
A	-3	ARG	-	expression tag	UNP O76290
A	-2	GLY	-	expression tag	UNP O76290
A	-1	SER	-	expression tag	UNP O76290
A	0	HIS	-	expression tag	UNP O76290
B	-19	MET	-	expression tag	UNP O76290

*Continued on next page...*

*Continued from previous page...*

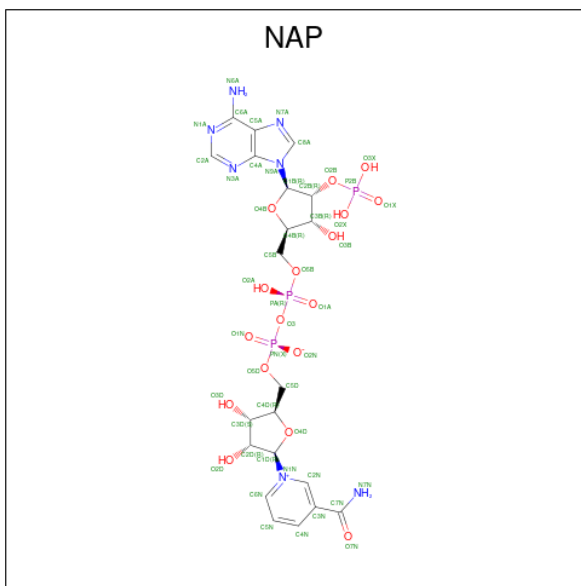
Chain	Residue	Modelled	Actual	Comment	Reference
B	-18	GLY	-	expression tag	UNP O76290
B	-17	SER	-	expression tag	UNP O76290
B	-16	SER	-	expression tag	UNP O76290
B	-15	HIS	-	expression tag	UNP O76290
B	-14	HIS	-	expression tag	UNP O76290
B	-13	HIS	-	expression tag	UNP O76290
B	-12	HIS	-	expression tag	UNP O76290
B	-11	HIS	-	expression tag	UNP O76290
B	-10	HIS	-	expression tag	UNP O76290
B	-9	SER	-	expression tag	UNP O76290
B	-8	SER	-	expression tag	UNP O76290
B	-7	GLY	-	expression tag	UNP O76290
B	-6	LEU	-	expression tag	UNP O76290
B	-5	VAL	-	expression tag	UNP O76290
B	-4	PRO	-	expression tag	UNP O76290
B	-3	ARG	-	expression tag	UNP O76290
B	-2	GLY	-	expression tag	UNP O76290
B	-1	SER	-	expression tag	UNP O76290
B	0	HIS	-	expression tag	UNP O76290
C	-19	MET	-	expression tag	UNP O76290
C	-18	GLY	-	expression tag	UNP O76290
C	-17	SER	-	expression tag	UNP O76290
C	-16	SER	-	expression tag	UNP O76290
C	-15	HIS	-	expression tag	UNP O76290
C	-14	HIS	-	expression tag	UNP O76290
C	-13	HIS	-	expression tag	UNP O76290
C	-12	HIS	-	expression tag	UNP O76290
C	-11	HIS	-	expression tag	UNP O76290
C	-10	HIS	-	expression tag	UNP O76290
C	-9	SER	-	expression tag	UNP O76290
C	-8	SER	-	expression tag	UNP O76290
C	-7	GLY	-	expression tag	UNP O76290
C	-6	LEU	-	expression tag	UNP O76290
C	-5	VAL	-	expression tag	UNP O76290
C	-4	PRO	-	expression tag	UNP O76290
C	-3	ARG	-	expression tag	UNP O76290
C	-2	GLY	-	expression tag	UNP O76290
C	-1	SER	-	expression tag	UNP O76290
C	0	HIS	-	expression tag	UNP O76290
D	-19	MET	-	expression tag	UNP O76290
D	-18	GLY	-	expression tag	UNP O76290
D	-17	SER	-	expression tag	UNP O76290

*Continued on next page...*

Continued from previous page...

Chain	Residue	Modelled	Actual	Comment	Reference
D	-16	SER	-	expression tag	UNP O76290
D	-15	HIS	-	expression tag	UNP O76290
D	-14	HIS	-	expression tag	UNP O76290
D	-13	HIS	-	expression tag	UNP O76290
D	-12	HIS	-	expression tag	UNP O76290
D	-11	HIS	-	expression tag	UNP O76290
D	-10	HIS	-	expression tag	UNP O76290
D	-9	SER	-	expression tag	UNP O76290
D	-8	SER	-	expression tag	UNP O76290
D	-7	GLY	-	expression tag	UNP O76290
D	-6	LEU	-	expression tag	UNP O76290
D	-5	VAL	-	expression tag	UNP O76290
D	-4	PRO	-	expression tag	UNP O76290
D	-3	ARG	-	expression tag	UNP O76290
D	-2	GLY	-	expression tag	UNP O76290
D	-1	SER	-	expression tag	UNP O76290
D	0	HIS	-	expression tag	UNP O76290

- Molecule 2 is NADP NICOTINAMIDE-ADENINE-DINUCLEOTIDE PHOSPHATE (three-letter code: NAP) (formula: C<sub>21</sub>H<sub>28</sub>N<sub>7</sub>O<sub>17</sub>P<sub>3</sub>).



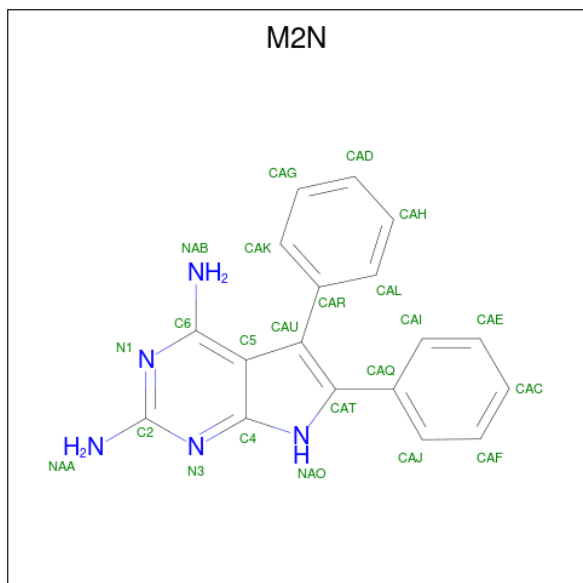
Mol	Chain	Residues	Atoms				ZeroOcc	AltConf	
			Total	C	N	O			P
2	A	1	Total	C	N	O	P	0	0
			48	21	7	17	3		
2	B	1	Total	C	N	O	P	0	0
			48	21	7	17	3		

Continued on next page...

Continued from previous page...

Mol	Chain	Residues	Atoms				ZeroOcc	AltConf	
2	C	1	Total	C	N	O	P	0	0
			48	21	7	17	3		
2	D	1	Total	C	N	O	P	0	0
			48	21	7	17	3		

- Molecule 3 is 5,6-diphenyl-7H-pyrrolo[2,3-d]pyrimidine-2,4-diamine (three-letter code: M2N) (formula: C<sub>18</sub>H<sub>15</sub>N<sub>5</sub>).



Mol	Chain	Residues	Atoms		ZeroOcc	AltConf	
3	A	1	Total	C	N	0	0
			23	18	5		
3	B	1	Total	C	N	0	0
			23	18	5		
3	C	1	Total	C	N	0	0
			23	18	5		
3	D	1	Total	C	N	0	0
			23	18	5		

- Molecule 4 is ACETATE ION (three-letter code: ACT) (formula: C<sub>2</sub>H<sub>3</sub>O<sub>2</sub>).



Mol	Chain	Residues	Atoms	ZeroOcc	AltConf
4	A	1	Total C O 4 2 2	0	0
4	A	1	Total C O 4 2 2	0	0
4	B	1	Total C O 4 2 2	0	0
4	C	1	Total C O 4 2 2	0	0
4	C	1	Total C O 4 2 2	0	0
4	D	1	Total C O 4 2 2	0	0

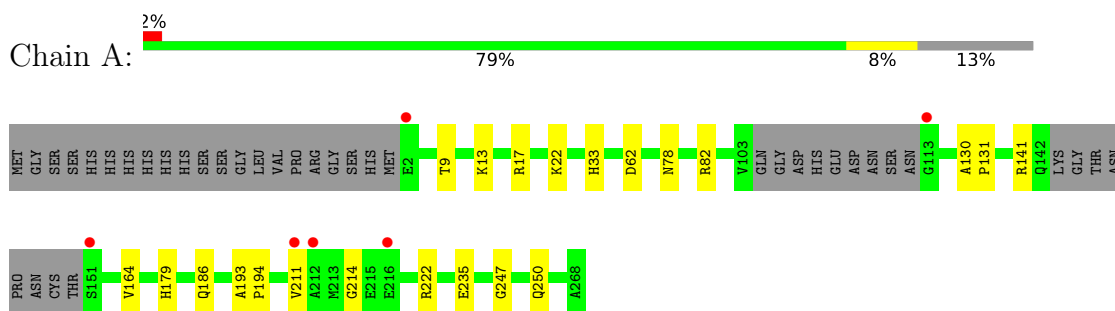
- Molecule 5 is water.

Mol	Chain	Residues	Atoms	ZeroOcc	AltConf
5	A	214	Total O 214 214	0	0
5	B	192	Total O 192 192	0	0
5	C	151	Total O 151 151	0	0
5	D	138	Total O 138 138	0	0

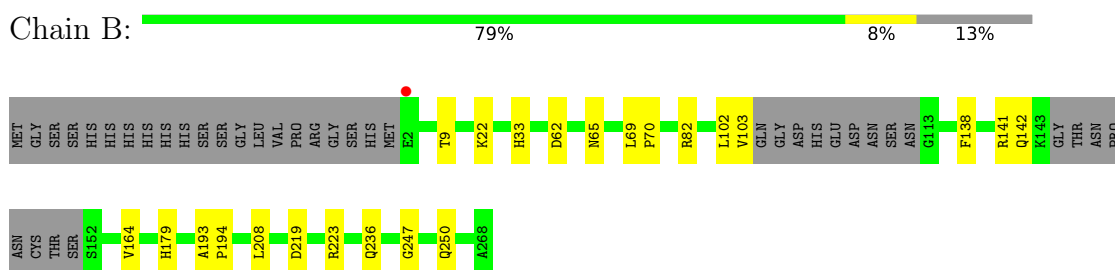
### 3 Residue-property plots [i](#)

These plots are drawn for all protein, RNA, DNA and oligosaccharide chains in the entry. The first graphic for a chain summarises the proportions of the various outlier classes displayed in the second graphic. The second graphic shows the sequence view annotated by issues in geometry and electron density. Residues are color-coded according to the number of geometric quality criteria for which they contain at least one outlier: green = 0, yellow = 1, orange = 2 and red = 3 or more. A red dot above a residue indicates a poor fit to the electron density ( $RSRZ > 2$ ). Stretches of 2 or more consecutive residues without any outlier are shown as a green connector. Residues present in the sample, but not in the model, are shown in grey.

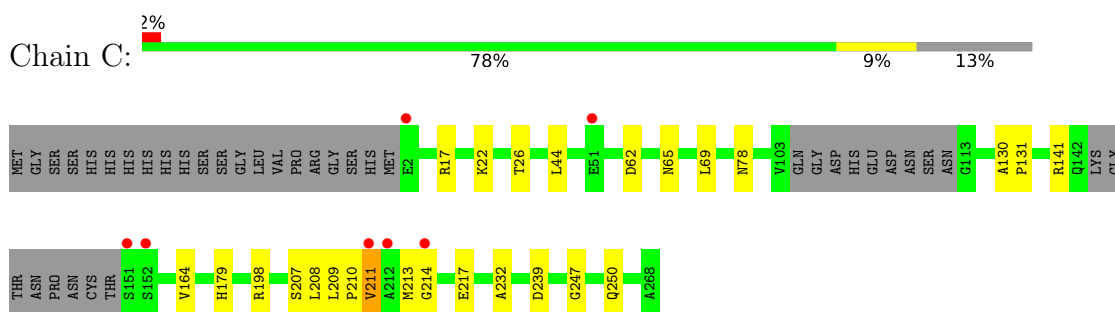
- Molecule 1: PTERIDINE REDUCTASE 1



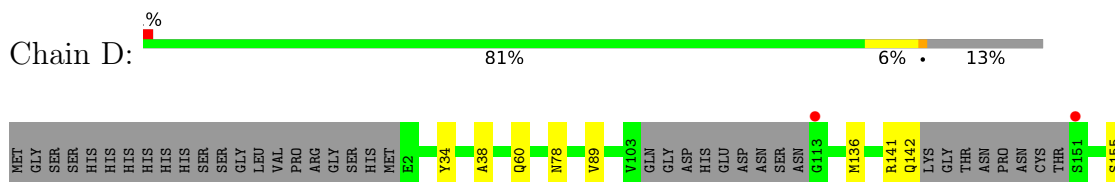
- Molecule 1: PTERIDINE REDUCTASE 1



- Molecule 1: PTERIDINE REDUCTASE 1



- Molecule 1: PTERIDINE REDUCTASE 1







## 4 Data and refinement statistics i

Property	Value	Source
Space group	P 1 21 1	Depositor
Cell constants a, b, c, $\alpha$ , $\beta$ , $\gamma$	73.97Å 88.44Å 84.15Å 90.00° 115.80° 90.00°	Depositor
Resolution (Å)	44.22 – 1.85 44.22 – 1.85	Depositor EDS
% Data completeness (in resolution range)	92.6 (44.22-1.85) 92.7 (44.22-1.85)	Depositor EDS
$R_{merge}$	0.06	Depositor
$R_{sym}$	(Not available)	Depositor
$\langle I/\sigma(I) \rangle$ <sup>1</sup>	3.04 (at 1.86Å)	Xtrriage
Refinement program	REFMAC 5.7.0032	Depositor
R, $R_{free}$	0.146 , 0.191 0.159 , 0.199	Depositor DCC
$R_{free}$ test set	3922 reflections (5.09%)	wwPDB-VP
Wilson B-factor (Å <sup>2</sup> )	17.0	Xtrriage
Anisotropy	0.107	Xtrriage
Bulk solvent $k_{sol}$ (e/Å <sup>3</sup> ), $B_{sol}$ (Å <sup>2</sup> )	0.38 , 48.5	EDS
L-test for twinning <sup>2</sup>	$\langle  L  \rangle = 0.49$ , $\langle L^2 \rangle = 0.33$	Xtrriage
Estimated twinning fraction	0.016 for h,-k,-h-l	Xtrriage
$F_o, F_c$ correlation	0.96	EDS
Total number of atoms	8564	wwPDB-VP
Average B, all atoms (Å <sup>2</sup> )	19.0	wwPDB-VP

Xtrriage's analysis on translational NCS is as follows: *The analyses of the Patterson function reveals a significant off-origin peak that is 22.29 % of the origin peak, indicating pseudo-translational symmetry. The chance of finding a peak of this or larger height randomly in a structure without pseudo-translational symmetry is equal to 5.8723e-03. The detected translational NCS is most likely also responsible for the elevated intensity ratio.*

<sup>1</sup>Intensities estimated from amplitudes.

<sup>2</sup>Theoretical values of  $\langle |L| \rangle$ ,  $\langle L^2 \rangle$  for acentric reflections are 0.5, 0.333 respectively for untwinned datasets, and 0.375, 0.2 for perfectly twinned datasets.

## 5 Model quality [i](#)

### 5.1 Standard geometry [i](#)

Bond lengths and bond angles in the following residue types are not validated in this section: M2N, NAP, ACT

The Z score for a bond length (or angle) is the number of standard deviations the observed value is removed from the expected value. A bond length (or angle) with  $|Z| > 5$  is considered an outlier worth inspection. RMSZ is the root-mean-square of all Z scores of the bond lengths (or angles).

Mol	Chain	Bond lengths		Bond angles	
		RMSZ	# Z  >5	RMSZ	# Z  >5
1	A	0.67	0/1947	0.78	2/2639 (0.1%)
1	B	0.69	0/1907	0.78	3/2586 (0.1%)
1	C	0.65	0/1948	0.82	2/2644 (0.1%)
1	D	0.68	0/1901	0.75	0/2579
All	All	0.67	0/7703	0.78	7/10448 (0.1%)

There are no bond length outliers.

All (7) bond angle outliers are listed below:

Mol	Chain	Res	Type	Atoms	Z	Observed(°)	Ideal(°)
1	B	82	ARG	NE-CZ-NH1	8.00	124.30	120.30
1	C	198	ARG	NE-CZ-NH1	7.69	124.15	120.30
1	A	62	ASP	CB-CG-OD1	6.55	124.20	118.30
1	C	62	ASP	CB-CG-OD1	5.68	123.41	118.30
1	B	82	ARG	NE-CZ-NH2	-5.50	117.55	120.30
1	B	62	ASP	CB-CG-OD1	5.13	122.92	118.30
1	A	222	ARG	NE-CZ-NH2	-5.03	117.78	120.30

There are no chirality outliers.

There are no planarity outliers.

### 5.2 Too-close contacts [i](#)

In the following table, the Non-H and H(model) columns list the number of non-hydrogen atoms and hydrogen atoms in the chain respectively. The H(added) column lists the number of hydrogen atoms added and optimized by MolProbity. The Clashes column lists the number of clashes within the asymmetric unit, whereas Symm-Clashes lists symmetry-related clashes.

Mol	Chain	Non-H	H(model)	H(added)	Clashes	Symm-Clashes
1	A	1899	0	1937	16	0
1	B	1877	0	1898	12	0
1	C	1917	0	1949	17	0
1	D	1868	0	1893	13	0
2	A	48	0	25	0	0
2	B	48	0	25	0	0
2	C	48	0	25	0	0
2	D	48	0	25	0	0
3	A	23	0	15	0	0
3	B	23	0	15	0	0
3	C	23	0	15	2	0
3	D	23	0	15	2	0
4	A	8	0	6	1	0
4	B	4	0	3	0	0
4	C	8	0	6	0	0
4	D	4	0	3	0	0
5	A	214	0	0	4	1
5	B	192	0	0	1	1
5	C	151	0	0	1	1
5	D	138	0	0	2	1
All	All	8564	0	7855	56	2

The all-atom clashscore is defined as the number of clashes found per 1000 atoms (including hydrogen atoms). The all-atom clashscore for this structure is 4.

All (56) close contacts within the same asymmetric unit are listed below, sorted by their clash magnitude.

Atom-1	Atom-2	Interatomic distance (Å)	Clash overlap (Å)
1:B:219[B]:ASP:OD2	1:B:223:ARG:NH1	1.90	1.04
1:D:78[B]:ASN:OD1	1:D:141:ARG:NH1	2.16	0.79
1:A:250[A]:GLN:NE2	5:A:2192:HOH:O	2.12	0.75
1:B:164:VAL:HG22	1:B:179:HIS:CD2	2.26	0.71
1:D:208:LEU:HD22	1:D:234:ALA:HB2	1.77	0.66
1:C:164:VAL:HG22	1:C:179:HIS:CD2	2.33	0.63
1:C:211[B]:VAL:HG12	5:C:2109:HOH:O	1.98	0.63
1:D:78[B]:ASN:ND2	5:D:2064:HOH:O	2.29	0.62
1:A:78[B]:ASN:OD1	1:A:141:ARG:NH2	2.33	0.62
1:A:164:VAL:HG22	1:A:179:HIS:CD2	2.34	0.62
1:B:103:VAL:HG22	5:B:2110:HOH:O	1.99	0.62
1:C:210[B]:PRO:HD3	3:C:1270:M2N:CAH	2.30	0.61
1:A:78[B]:ASN:OD1	1:A:82[B]:ARG:NH1	2.35	0.60
1:A:250[A]:GLN:HG2	5:A:2186:HOH:O	2.02	0.60

*Continued on next page...*

*Continued from previous page...*

Atom-1	Atom-2	Interatomic distance (Å)	Clash overlap (Å)
1:D:164:VAL:HG22	1:D:179:HIS:CD2	2.37	0.59
1:B:138:PHE:O	1:B:142:GLN:HG2	2.03	0.58
1:C:247:GLY:O	1:C:250:GLN:HG2	2.04	0.58
1:C:17:ARG:CZ	1:C:44:LEU:HD13	2.35	0.57
1:D:60:GLN:OE1	5:D:2050:HOH:O	2.17	0.57
1:D:207:SER:O	1:D:208:LEU:C	2.44	0.55
1:C:78:ASN:OD1	1:C:141:ARG:NH1	2.37	0.54
1:C:22:LYS:HE3	1:C:239:ASP:OD1	2.08	0.54
1:A:9:THR:HA	1:A:33:HIS:HB3	1.91	0.53
1:B:65:ASN:HA	1:B:69:LEU:HD22	1.92	0.51
1:D:78[A]:ASN:HD22	1:D:141:ARG:HH12	1.59	0.50
1:A:247:GLY:O	1:A:250[B]:GLN:HG2	2.12	0.50
1:A:130:ALA:HB3	1:A:131:PRO:HD3	1.93	0.50
3:D:1270:M2N:CAI	3:D:1270:M2N:CAK	2.91	0.49
1:B:102:LEU:O	1:D:136:MET:HG3	2.12	0.49
1:C:130:ALA:HB3	1:C:131:PRO:HD3	1.97	0.47
1:C:209[B]:LEU:HD23	3:C:1270:M2N:HAD	1.96	0.47
1:D:34:TYR:CE2	1:D:38:ALA:HA	2.49	0.47
1:A:186:GLN:NE2	4:A:1271:ACT:O	2.37	0.47
1:B:247:GLY:O	1:B:250:GLN:HG2	2.15	0.46
1:A:250[A]:GLN:CD	1:B:236:GLN:HE21	2.19	0.46
1:C:250:GLN:HE21	1:C:250:GLN:HA	1.81	0.46
1:A:22:LYS:CE	1:A:235:GLU:HG3	2.46	0.45
1:C:26:THR:HG22	1:C:26:THR:O	2.16	0.44
1:D:214:GLY:O	1:D:217:GLU:HG3	2.17	0.44
1:C:214[A]:GLY:O	1:C:217:GLU:N	2.50	0.44
1:C:17:ARG:NE	1:C:44:LEU:HD13	2.32	0.43
1:C:207:SER:O	1:C:208[B]:LEU:C	2.56	0.43
1:B:9:THR:HA	1:B:33:HIS:HB3	2.02	0.42
1:C:213[A]:MET:O	1:C:214[A]:GLY:C	2.58	0.42
1:B:103:VAL:HG21	1:D:195:TYR:OH	2.20	0.42
1:B:69:LEU:N	1:B:70:PRO:CD	2.83	0.42
1:A:193:ALA:N	1:A:194:PRO:CD	2.83	0.41
1:B:193:ALA:HB3	1:B:194:PRO:HD3	2.03	0.41
1:C:232:ALA:HB2	1:D:251:TYR:CE2	2.56	0.41
1:D:89:VAL:HA	1:D:155:SER:O	2.21	0.41
1:C:65:ASN:HA	1:C:69:LEU:HD22	2.03	0.41
3:D:1270:M2N:HAB1	3:D:1270:M2N:CAL	2.33	0.41
1:A:13:LYS:HA	1:A:17:ARG:HD2	2.04	0.40
1:A:194:PRO:HG3	5:A:2150:HOH:O	2.22	0.40
1:A:214:GLY:HA3	5:A:2159:HOH:O	2.22	0.40

All (2) symmetry-related close contacts are listed below. The label for Atom-2 includes the symmetry operator and encoded unit-cell translations to be applied.

Atom-1	Atom-2	Interatomic distance (Å)	Clash overlap (Å)
5:A:2031:HOH:O	5:D:2046:HOH:O[1_554]	2.12	0.08
5:B:2022:HOH:O	5:C:2018:HOH:O[1_455]	2.12	0.08

## 5.3 Torsion angles [i](#)

### 5.3.1 Protein backbone [i](#)

In the following table, the Percentiles column shows the percent Ramachandran outliers of the chain as a percentile score with respect to all X-ray entries followed by that with respect to entries of similar resolution.

The Analysed column shows the number of residues for which the backbone conformation was analysed, and the total number of residues.

Mol	Chain	Analysed	Favoured	Allowed	Outliers	Percentiles	
1	A	251/288 (87%)	242 (96%)	9 (4%)	0	100	100
1	B	247/288 (86%)	238 (96%)	8 (3%)	1 (0%)	34	19
1	C	253/288 (88%)	243 (96%)	10 (4%)	0	100	100
1	D	246/288 (85%)	236 (96%)	9 (4%)	1 (0%)	34	19
All	All	997/1152 (86%)	959 (96%)	36 (4%)	2 (0%)	47	33

All (2) Ramachandran outliers are listed below:

Mol	Chain	Res	Type
1	B	208	LEU
1	D	208	LEU

### 5.3.2 Protein sidechains [i](#)

In the following table, the Percentiles column shows the percent sidechain outliers of the chain as a percentile score with respect to all X-ray entries followed by that with respect to entries of similar resolution.

The Analysed column shows the number of residues for which the sidechain conformation was analysed, and the total number of residues.

Mol	Chain	Analysed	Rotameric	Outliers	Percentiles	
1	A	205/231 (89%)	204 (100%)	1 (0%)	88	86
1	B	199/231 (86%)	197 (99%)	2 (1%)	76	69
1	C	205/231 (89%)	203 (99%)	2 (1%)	76	69
1	D	200/231 (87%)	198 (99%)	2 (1%)	76	69
All	All	809/924 (88%)	802 (99%)	7 (1%)	81	72

All (7) residues with a non-rotameric sidechain are listed below:

Mol	Chain	Res	Type
1	A	211	VAL
1	B	22	LYS
1	B	141	ARG
1	C	211[A]	VAL
1	C	211[B]	VAL
1	D	142	GLN
1	D	217	GLU

Sometimes sidechains can be flipped to improve hydrogen bonding and reduce clashes. All (2) such sidechains are listed below:

Mol	Chain	Res	Type
1	B	236	GLN
1	C	250	GLN

### 5.3.3 RNA [i](#)

There are no RNA molecules in this entry.

## 5.4 Non-standard residues in protein, DNA, RNA chains [i](#)

There are no non-standard protein/DNA/RNA residues in this entry.

## 5.5 Carbohydrates [i](#)

There are no monosaccharides in this entry.

## 5.6 Ligand geometry [i](#)

14 ligands are modelled in this entry.

In the following table, the Counts columns list the number of bonds (or angles) for which Mogul statistics could be retrieved, the number of bonds (or angles) that are observed in the model and the number of bonds (or angles) that are defined in the Chemical Component Dictionary. The Link column lists molecule types, if any, to which the group is linked. The Z score for a bond length (or angle) is the number of standard deviations the observed value is removed from the expected value. A bond length (or angle) with  $|Z| > 2$  is considered an outlier worth inspection. RMSZ is the root-mean-square of all Z scores of the bond lengths (or angles).

Mol	Type	Chain	Res	Link	Bond lengths			Bond angles		
					Counts	RMSZ	# Z  > 2	Counts	RMSZ	# Z  > 2
4	ACT	A	1272	-	3,3,3	0.75	0	3,3,3	1.05	0
3	M2N	B	1270	-	26,26,26	2.93	5 (19%)	27,37,37	1.92	7 (25%)
2	NAP	D	1269	-	45,52,52	1.11	3 (6%)	56,80,80	1.44	7 (12%)
4	ACT	C	1271	-	3,3,3	0.62	0	3,3,3	0.90	0
4	ACT	B	1271	-	3,3,3	0.54	0	3,3,3	0.79	0
2	NAP	C	1269	-	45,52,52	1.16	2 (4%)	56,80,80	1.24	5 (8%)
4	ACT	D	1271	-	3,3,3	0.57	0	3,3,3	0.87	0
2	NAP	A	1269	-	45,52,52	1.02	4 (8%)	56,80,80	1.29	8 (14%)
3	M2N	A	1270	-	26,26,26	3.00	4 (15%)	27,37,37	2.25	7 (25%)
3	M2N	C	1270	-	26,26,26	3.36	6 (23%)	27,37,37	1.85	8 (29%)
4	ACT	C	1272	-	3,3,3	0.49	0	3,3,3	1.26	0
2	NAP	B	1269	-	45,52,52	1.04	3 (6%)	56,80,80	1.31	6 (10%)
4	ACT	A	1271	-	3,3,3	0.91	0	3,3,3	1.03	0
3	M2N	D	1270	-	26,26,26	2.80	4 (15%)	27,37,37	2.12	8 (29%)

In the following table, the Chirals column lists the number of chiral outliers, the number of chiral centers analysed, the number of these observed in the model and the number defined in the Chemical Component Dictionary. Similar counts are reported in the Torsion and Rings columns. '-' means no outliers of that kind were identified.

Mol	Type	Chain	Res	Link	Chirals	Torsions	Rings
3	M2N	B	1270	-	-	0/8/8/8	0/4/4/4
2	NAP	D	1269	-	-	1/31/67/67	0/5/5/5
2	NAP	C	1269	-	-	0/31/67/67	0/5/5/5
2	NAP	A	1269	-	-	0/31/67/67	0/5/5/5
3	M2N	A	1270	-	-	0/8/8/8	0/4/4/4
3	M2N	C	1270	-	-	0/8/8/8	0/4/4/4
2	NAP	B	1269	-	-	0/31/67/67	0/5/5/5
3	M2N	D	1270	-	-	0/8/8/8	0/4/4/4

All (31) bond length outliers are listed below:



Mol	Chain	Res	Type	Atoms	Z	Observed(Å)	Ideal(Å)
3	C	1270	M2N	CAU-CAR	-11.64	1.35	1.49
3	A	1270	M2N	CAU-CAR	-10.56	1.37	1.49
3	B	1270	M2N	CAQ-CAT	-10.46	1.37	1.49
3	C	1270	M2N	CAQ-CAT	-9.59	1.38	1.49
3	D	1270	M2N	CAU-CAR	-9.57	1.38	1.49
3	A	1270	M2N	CAQ-CAT	-9.20	1.38	1.49
3	D	1270	M2N	CAQ-CAT	-8.77	1.39	1.49
3	B	1270	M2N	CAU-CAR	-8.12	1.40	1.49
3	C	1270	M2N	CAU-CAT	-5.10	1.35	1.41
2	C	1269	NAP	P2B-O2B	4.90	1.68	1.59
3	B	1270	M2N	CAU-CAT	-4.56	1.36	1.41
3	A	1270	M2N	CAU-CAT	-3.86	1.37	1.41
3	C	1270	M2N	CAU-C5	-3.85	1.37	1.42
2	D	1269	NAP	P2B-O2B	3.57	1.66	1.59
3	D	1270	M2N	CAU-CAT	-3.31	1.37	1.41
3	B	1270	M2N	CAU-C5	-3.18	1.38	1.42
2	A	1269	NAP	P2B-O2B	2.99	1.65	1.59
3	A	1270	M2N	CAU-C5	-2.58	1.39	1.42
3	C	1270	M2N	C6-N1	2.49	1.38	1.33
2	B	1269	NAP	P2B-O2B	2.48	1.64	1.59
2	B	1269	NAP	C2N-N1N	2.46	1.37	1.35
3	D	1270	M2N	CAU-C5	-2.42	1.39	1.42
2	D	1269	NAP	C2N-N1N	2.34	1.37	1.35
3	B	1270	M2N	C5-C4	-2.29	1.36	1.43
2	A	1269	NAP	O4D-C1D	2.21	1.44	1.41
2	A	1269	NAP	O4B-C4B	-2.16	1.40	1.45
2	B	1269	NAP	PA-O2A	-2.09	1.45	1.55
2	C	1269	NAP	C2A-N3A	2.08	1.35	1.32
2	A	1269	NAP	C2A-N3A	2.04	1.35	1.32
2	D	1269	NAP	P2B-O3X	-2.02	1.47	1.54
3	C	1270	M2N	C2-NAA	-2.01	1.29	1.33

All (56) bond angle outliers are listed below:

Mol	Chain	Res	Type	Atoms	Z	Observed(°)	Ideal(°)
3	A	1270	M2N	N3-C2-N1	-6.34	118.76	127.22
3	A	1270	M2N	C2-N3-C4	6.08	122.31	115.36
3	D	1270	M2N	N3-C2-N1	-6.03	119.18	127.22
3	B	1270	M2N	N3-C2-N1	-5.29	120.17	127.22
3	C	1270	M2N	N3-C2-N1	-4.80	120.82	127.22
2	B	1269	NAP	C3N-C7N-N7N	4.68	123.37	117.75
3	B	1270	M2N	C2-N3-C4	4.67	120.69	115.36
2	A	1269	NAP	N3A-C2A-N1A	-4.62	121.45	128.68

*Continued on next page...*

*Continued from previous page...*

Mol	Chain	Res	Type	Atoms	Z	Observed(°)	Ideal(°)
3	C	1270	M2N	C2-N3-C4	4.40	120.38	115.36
2	D	1269	NAP	C3N-C7N-N7N	4.34	122.96	117.75
3	D	1270	M2N	CAI-CAQ-CAT	4.11	127.12	120.61
3	A	1270	M2N	CAU-C5-C4	-4.05	104.31	107.54
2	C	1269	NAP	N3A-C2A-N1A	-4.05	122.35	128.68
3	D	1270	M2N	C2-N3-C4	3.76	119.66	115.36
3	B	1270	M2N	CAI-CAQ-CAT	3.49	126.13	120.61
2	D	1269	NAP	N3A-C2A-N1A	-3.35	123.45	128.68
2	D	1269	NAP	O7N-C7N-C3N	-3.24	115.75	119.63
2	B	1269	NAP	N3A-C2A-N1A	-3.18	123.71	128.68
2	C	1269	NAP	C3N-C7N-N7N	3.09	121.46	117.75
2	A	1269	NAP	C1B-N9A-C4A	-3.05	121.29	126.64
3	C	1270	M2N	NAA-C2-N1	2.93	121.81	117.25
2	D	1269	NAP	O3X-P2B-O2X	2.92	118.78	107.64
3	C	1270	M2N	CAR-CAU-CAT	-2.91	121.11	126.88
2	B	1269	NAP	C4A-C5A-N7A	-2.90	106.38	109.40
2	B	1269	NAP	O7N-C7N-N7N	-2.79	118.61	122.58
3	A	1270	M2N	CAI-CAQ-CAT	2.78	125.00	120.61
2	C	1269	NAP	C1B-N9A-C4A	-2.70	121.90	126.64
2	A	1269	NAP	C2A-N1A-C6A	2.63	123.25	118.75
3	D	1270	M2N	CAF-CAJ-CAQ	2.59	123.81	120.56
3	D	1270	M2N	CAR-CAU-CAT	-2.58	121.76	126.88
2	D	1269	NAP	C1B-N9A-C4A	-2.52	122.22	126.64
3	A	1270	M2N	NAA-C2-N1	2.46	121.08	117.25
3	B	1270	M2N	CAF-CAJ-CAQ	2.45	123.64	120.56
3	B	1270	M2N	NAA-C2-N1	2.43	121.03	117.25
2	C	1269	NAP	O2N-PN-O1N	2.41	124.17	112.24
2	B	1269	NAP	O4B-C4B-C3B	-2.37	100.42	105.11
3	A	1270	M2N	CAF-CAJ-CAQ	2.37	123.54	120.56
2	B	1269	NAP	O4B-C1B-C2B	-2.36	102.49	106.59
2	A	1269	NAP	C4A-C5A-N7A	-2.35	106.95	109.40
3	D	1270	M2N	CAL-CAR-CAU	2.31	124.26	120.77
3	A	1270	M2N	CAR-CAU-CAT	-2.30	122.31	126.88
3	C	1270	M2N	CAU-C5-C4	-2.30	105.70	107.54
3	C	1270	M2N	CAG-CAK-CAR	2.26	123.41	120.56
3	C	1270	M2N	CAI-CAQ-CAT	2.26	124.18	120.61
3	D	1270	M2N	NAA-C2-N1	2.26	120.76	117.25
2	C	1269	NAP	PN-O3-PA	-2.25	125.11	132.83
2	A	1269	NAP	O2A-PA-O1A	2.22	123.23	112.24
2	D	1269	NAP	N6A-C6A-N1A	2.19	123.12	118.57
3	B	1270	M2N	CAR-CAU-CAT	-2.16	122.60	126.88
3	D	1270	M2N	CAE-CAI-CAQ	2.13	123.24	120.56

*Continued on next page...*

*Continued from previous page...*

Mol	Chain	Res	Type	Atoms	Z	Observed(°)	Ideal(°)
2	A	1269	NAP	O2X-P2B-O2B	-2.10	96.58	105.99
2	A	1269	NAP	C3N-C7N-N7N	2.09	120.25	117.75
2	D	1269	NAP	O2N-PN-O1N	2.06	122.43	112.24
2	A	1269	NAP	O3X-P2B-O1X	2.01	118.56	110.68
3	C	1270	M2N	CAL-CAR-CAU	2.01	123.81	120.77
3	B	1270	M2N	CAU-C5-C4	-2.00	105.94	107.54

There are no chirality outliers.

All (1) torsion outliers are listed below:

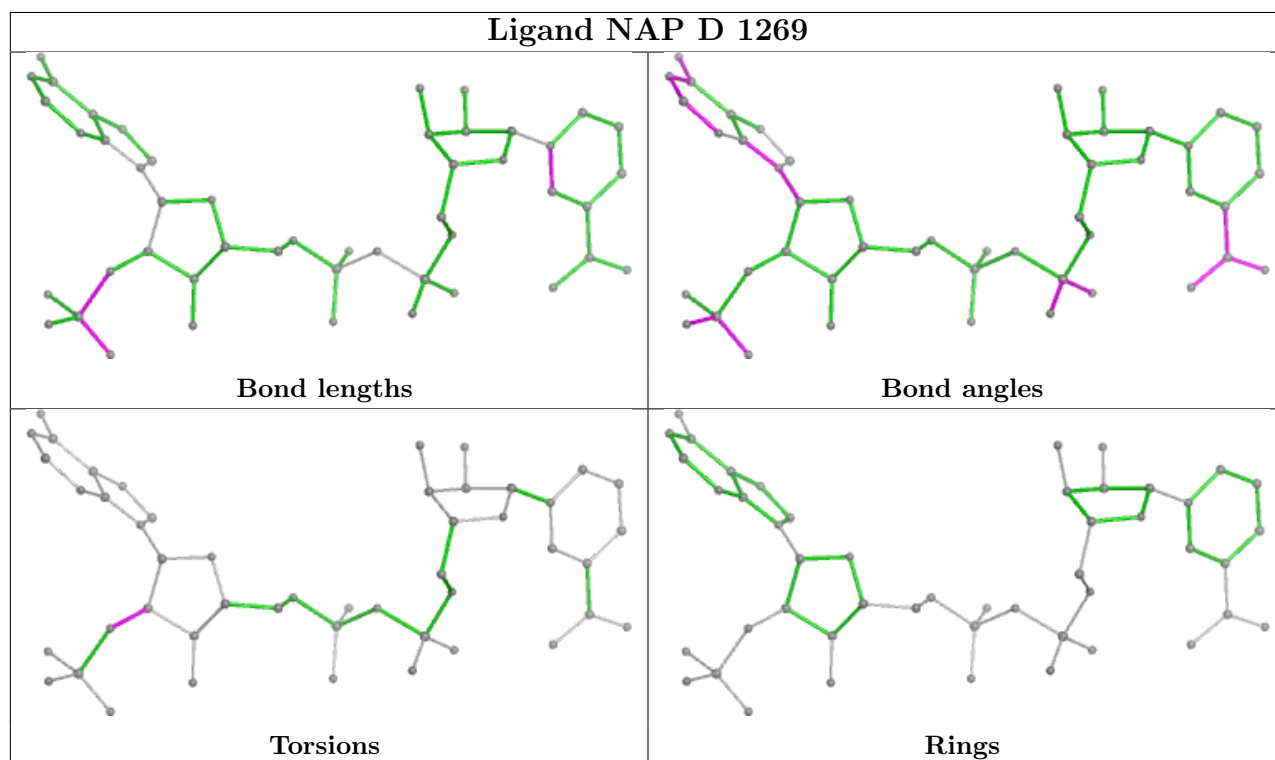
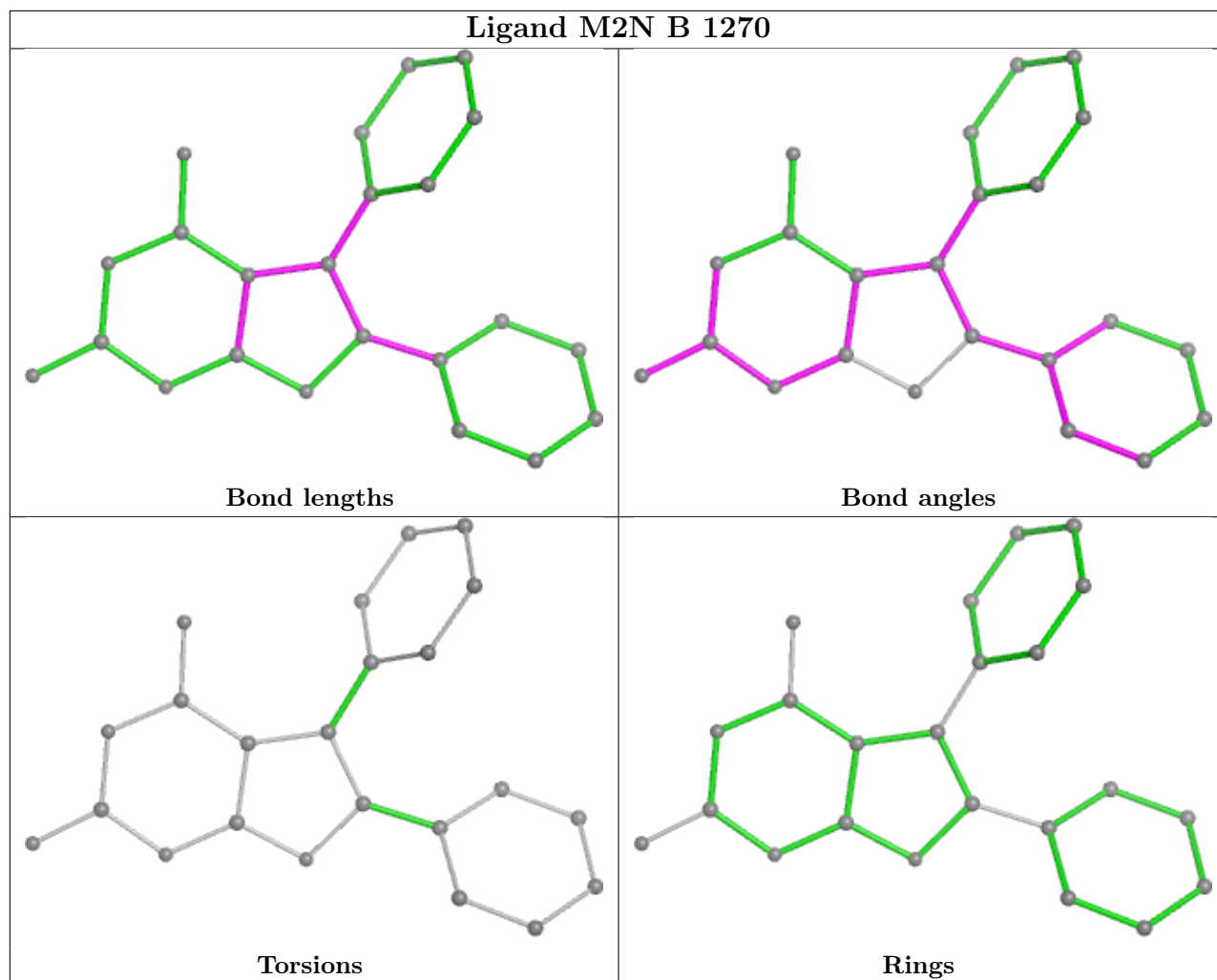
Mol	Chain	Res	Type	Atoms
2	D	1269	NAP	C3B-C2B-O2B-P2B

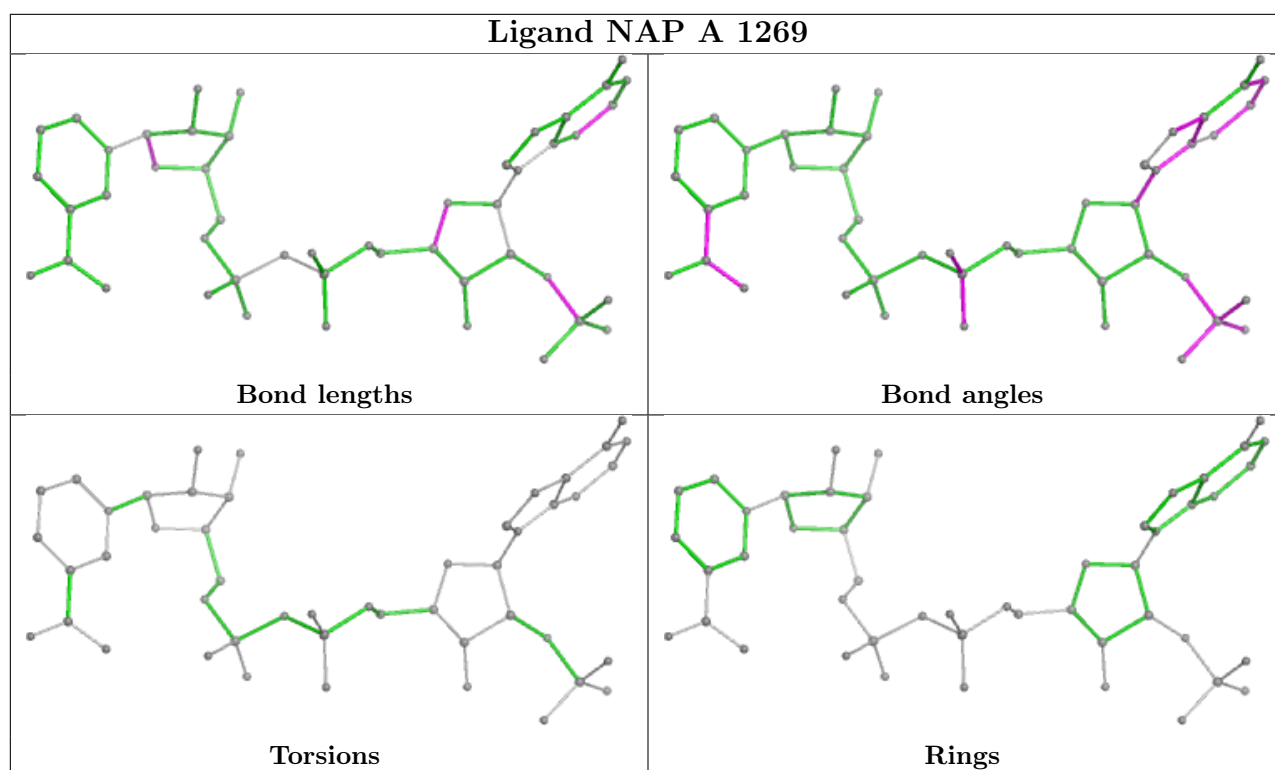
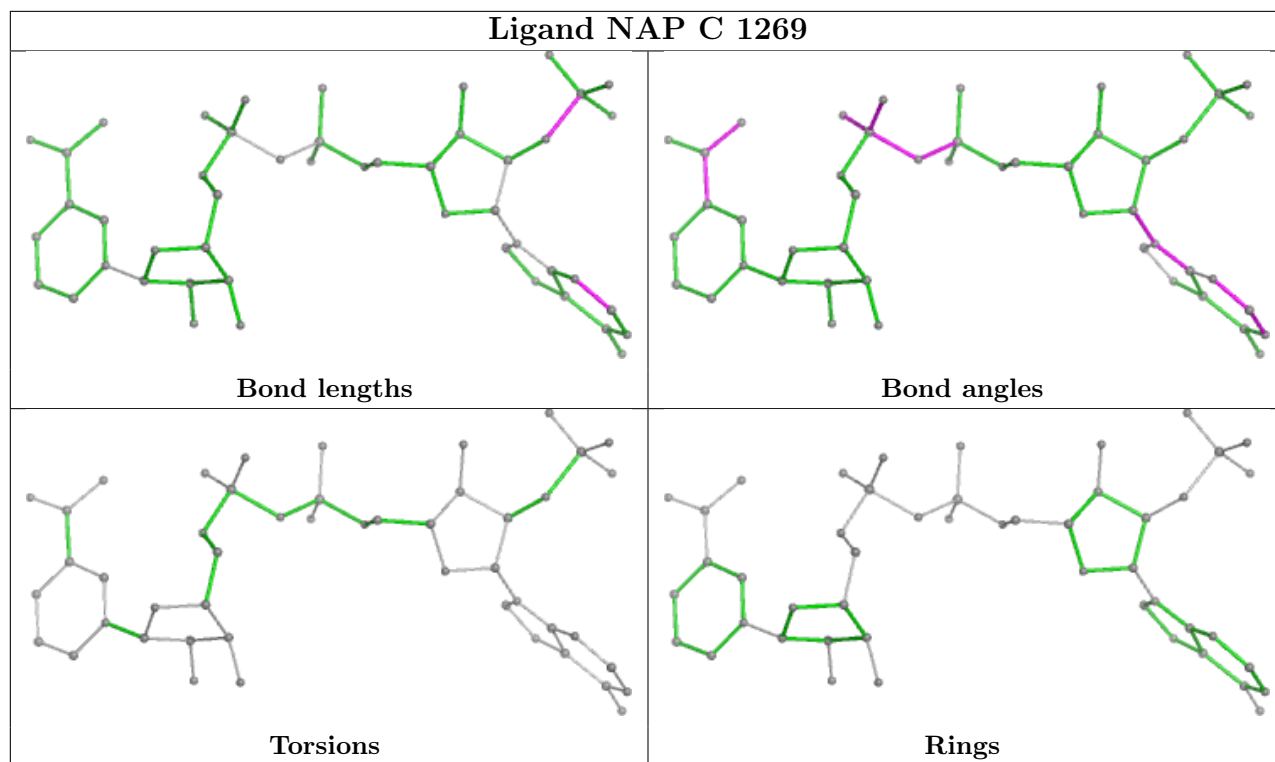
There are no ring outliers.

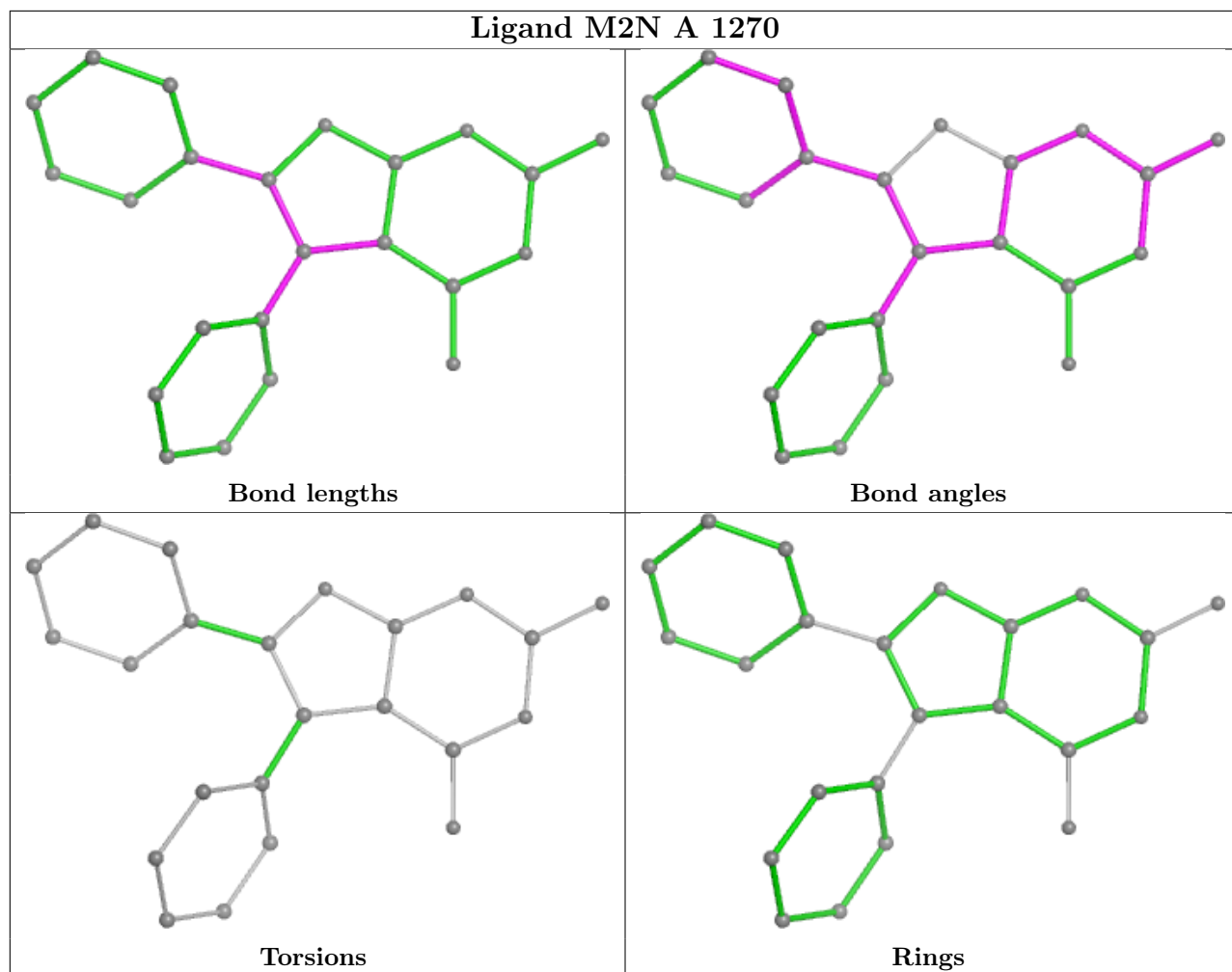
3 monomers are involved in 5 short contacts:

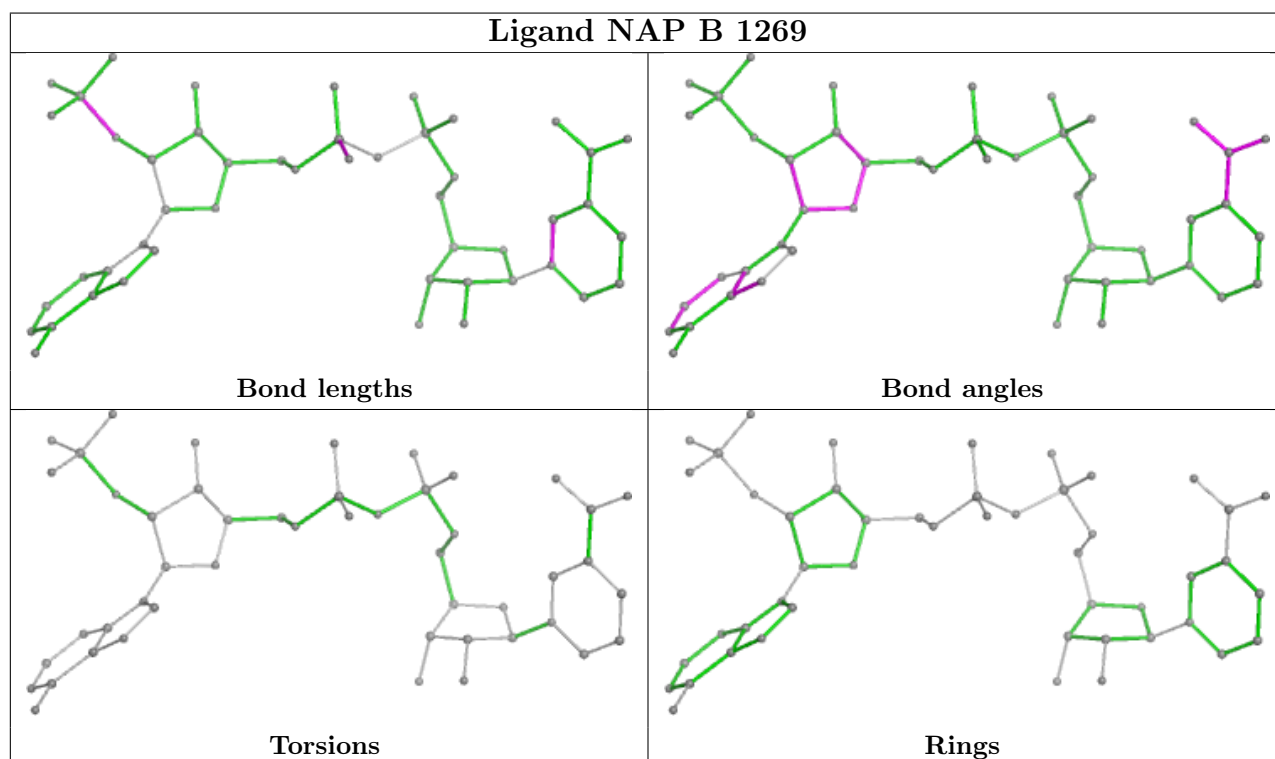
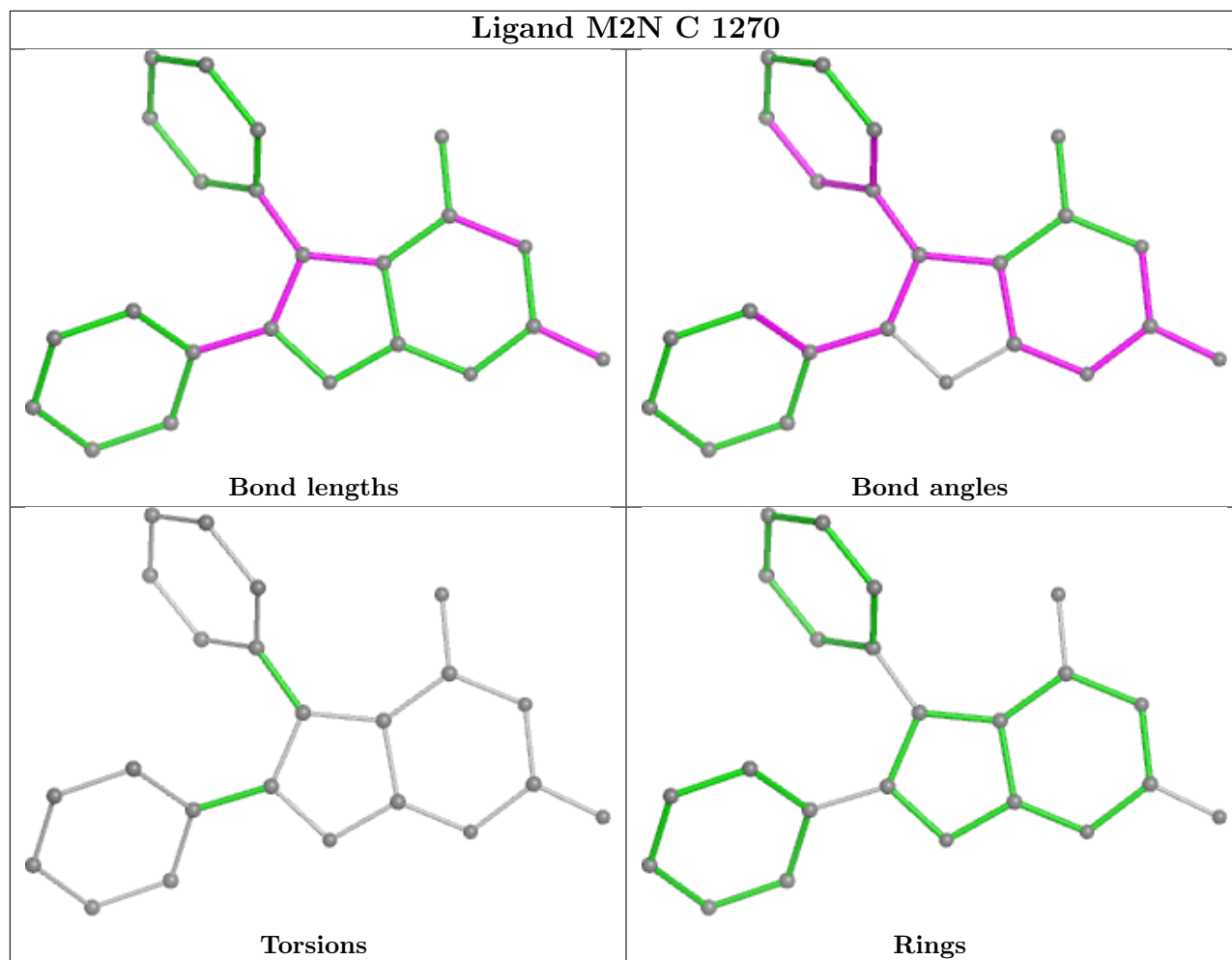
Mol	Chain	Res	Type	Clashes	Symm-Clashes
3	C	1270	M2N	2	0
4	A	1271	ACT	1	0
3	D	1270	M2N	2	0

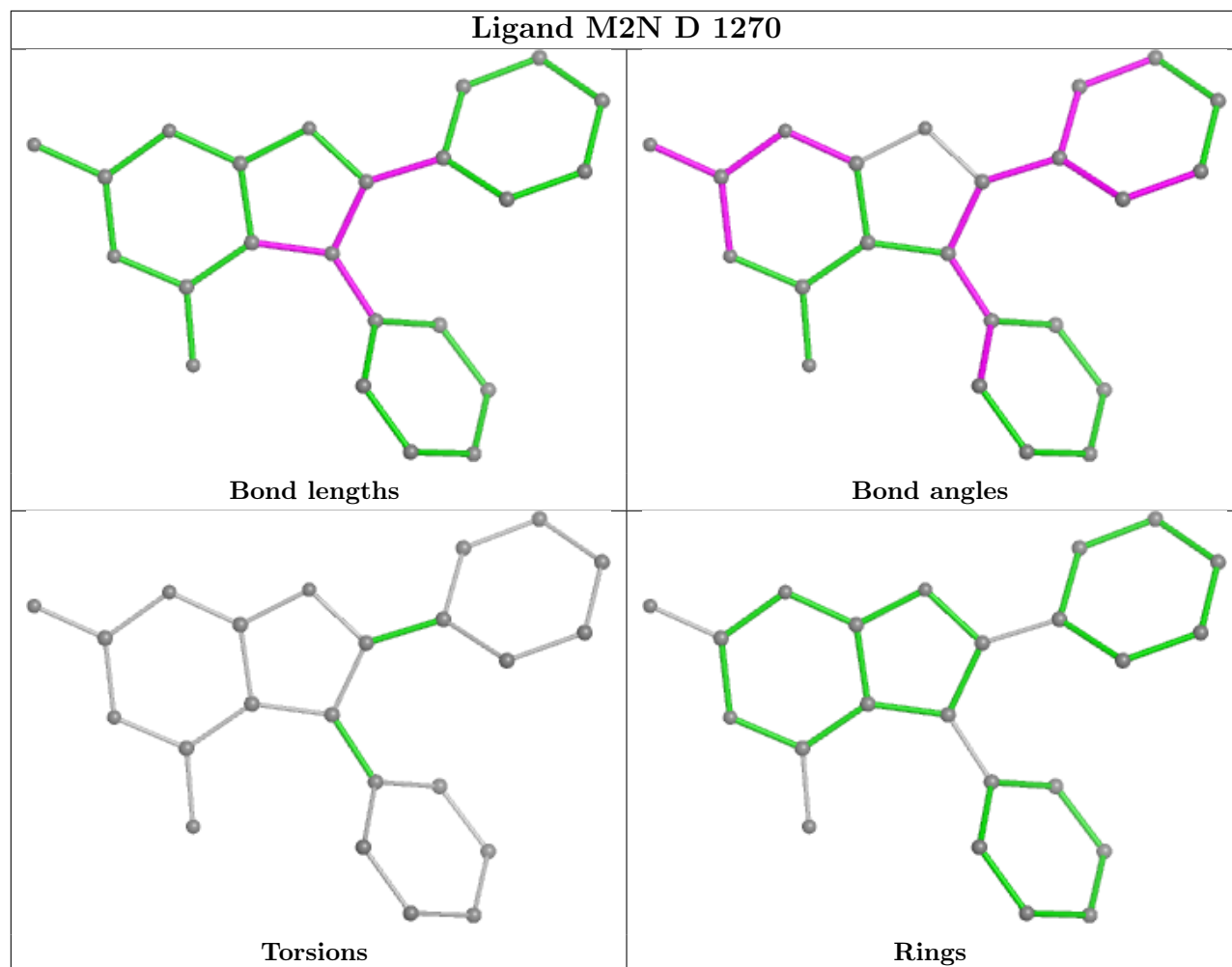
The following is a two-dimensional graphical depiction of Mogul quality analysis of bond lengths, bond angles, torsion angles, and ring geometry for all instances of the Ligand of Interest. In addition, ligands with molecular weight > 250 and outliers as shown on the validation Tables will also be included. For torsion angles, if less than 5% of the Mogul distribution of torsion angles is within 10 degrees of the torsion angle in question, then that torsion angle is considered an outlier. Any bond that is central to one or more torsion angles identified as an outlier by Mogul will be highlighted in the graph. For rings, the root-mean-square deviation (RMSD) between the ring in question and similar rings identified by Mogul is calculated over all ring torsion angles. If the average RMSD is greater than 60 degrees and the minimal RMSD between the ring in question and any Mogul-identified rings is also greater than 60 degrees, then that ring is considered an outlier. The outliers are highlighted in purple. The color gray indicates Mogul did not find sufficient equivalents in the CSD to analyse the geometry.











## 5.7 Other polymers [i](#)

There are no such residues in this entry.

## 5.8 Polymer linkage issues [i](#)

There are no chain breaks in this entry.



## 6 Fit of model and data [i](#)

### 6.1 Protein, DNA and RNA chains [i](#)

In the following table, the column labelled ‘#RSRZ > 2’ contains the number (and percentage) of RSRZ outliers, followed by percent RSRZ outliers for the chain as percentile scores relative to all X-ray entries and entries of similar resolution. The OWAB column contains the minimum, median, 95<sup>th</sup> percentile and maximum values of the occupancy-weighted average B-factor per residue. The column labelled ‘Q < 0.9’ lists the number of (and percentage) of residues with an average occupancy less than 0.9.

Mol	Chain	Analysed	<RSRZ>	#RSRZ>2	OWAB(Å <sup>2</sup> )	Q<0.9
1	A	250/288 (86%)	-0.36	6 (2%) 59 57	9, 15, 36, 65	0
1	B	250/288 (86%)	-0.35	1 (0%) 92 92	8, 15, 33, 60	0
1	C	250/288 (86%)	-0.15	7 (2%) 53 52	8, 18, 40, 61	0
1	D	250/288 (86%)	-0.27	4 (1%) 72 72	9, 17, 36, 47	0
All	All	1000/1152 (86%)	-0.28	18 (1%) 68 68	8, 16, 36, 65	0

All (18) RSRZ outliers are listed below:

Mol	Chain	Res	Type	RSRZ
1	A	211	VAL	6.0
1	C	212[A]	ALA	5.3
1	C	151	SER	4.4
1	C	211[A]	VAL	4.4
1	D	211	VAL	4.2
1	D	113	GLY	3.4
1	A	113	GLY	3.0
1	A	151	SER	3.0
1	A	216	GLU	2.9
1	C	2	GLU	2.8
1	D	151	SER	2.8
1	C	152	SER	2.8
1	D	212	ALA	2.3
1	B	2	GLU	2.1
1	C	51	GLU	2.1
1	A	212	ALA	2.0
1	C	214[A]	GLY	2.0
1	A	2	GLU	2.0

## 6.2 Non-standard residues in protein, DNA, RNA chains [i](#)

There are no non-standard protein/DNA/RNA residues in this entry.

## 6.3 Carbohydrates [i](#)

There are no monosaccharides in this entry.

## 6.4 Ligands [i](#)

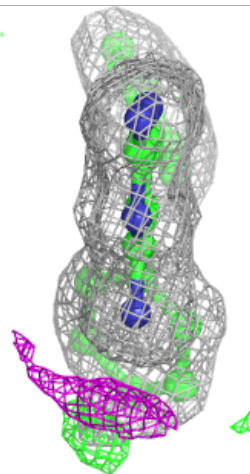
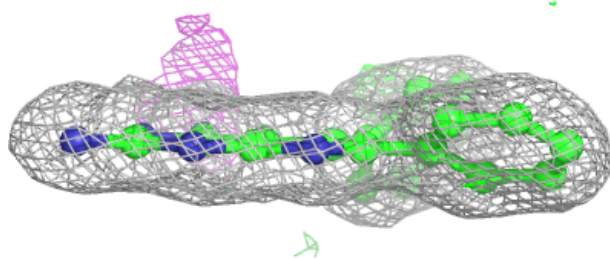
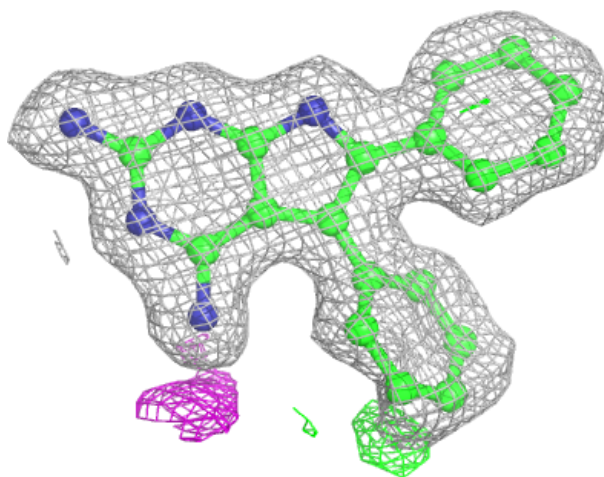
In the following table, the Atoms column lists the number of modelled atoms in the group and the number defined in the chemical component dictionary. The B-factors column lists the minimum, median, 95<sup>th</sup> percentile and maximum values of B factors of atoms in the group. The column labelled 'Q< 0.9' lists the number of atoms with occupancy less than 0.9.

Mol	Type	Chain	Res	Atoms	RSCC	RSR	B-factors( $\text{\AA}^2$ )	Q<0.9
4	ACT	B	1271	4/4	0.92	0.14	30,32,33,35	0
4	ACT	A	1271	4/4	0.94	0.10	28,28,29,33	0
4	ACT	D	1271	4/4	0.94	0.11	30,31,32,33	0
3	M2N	A	1270	23/23	0.95	0.10	12,17,27,28	0
3	M2N	C	1270	23/23	0.95	0.09	15,20,30,32	0
4	ACT	C	1272	4/4	0.95	0.15	23,24,24,24	0
3	M2N	D	1270	23/23	0.95	0.10	15,20,30,31	0
3	M2N	B	1270	23/23	0.96	0.08	12,16,25,25	0
4	ACT	A	1272	4/4	0.97	0.13	25,28,29,30	0
4	ACT	C	1271	4/4	0.97	0.09	28,29,30,31	0
2	NAP	C	1269	48/48	0.98	0.07	10,14,18,19	0
2	NAP	D	1269	48/48	0.98	0.06	11,14,16,17	0
2	NAP	A	1269	48/48	0.98	0.07	9,12,15,15	0
2	NAP	B	1269	48/48	0.98	0.07	9,12,15,18	0

The following is a graphical depiction of the model fit to experimental electron density of all instances of the Ligand of Interest. In addition, ligands with molecular weight > 250 and outliers as shown on the geometry validation Tables will also be included. Each fit is shown from different orientation to approximate a three-dimensional view.

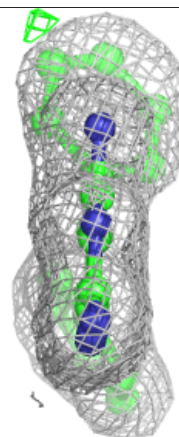
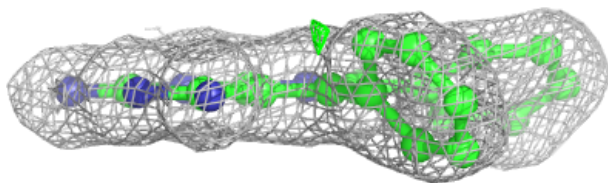
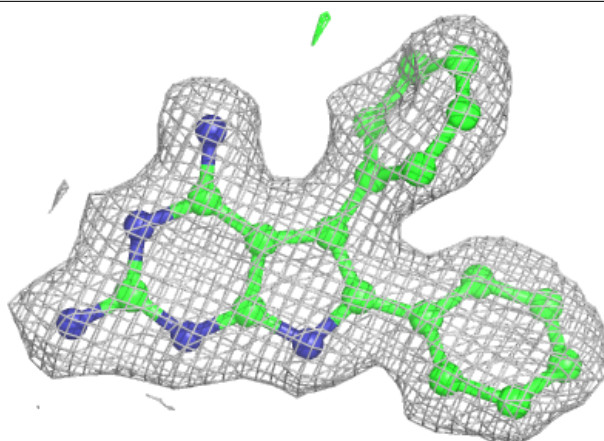
**Electron density around M2N A 1270:**

$2mF_o-DF_c$  (at 0.7 rmsd) in gray  
 $mF_o-DF_c$  (at 3 rmsd) in purple (negative)  
and green (positive)



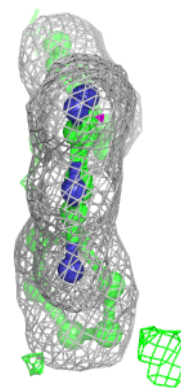
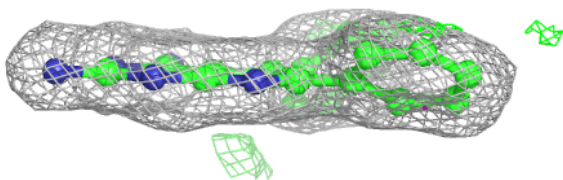
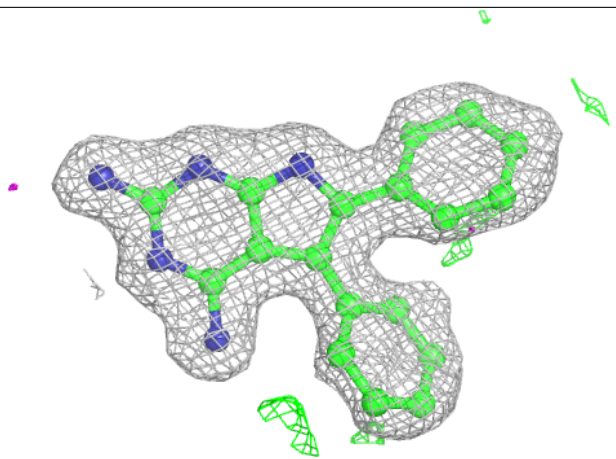
**Electron density around M2N C 1270:**

$2mF_o-DF_c$  (at 0.7 rmsd) in gray  
 $mF_o-DF_c$  (at 3 rmsd) in purple (negative)  
and green (positive)



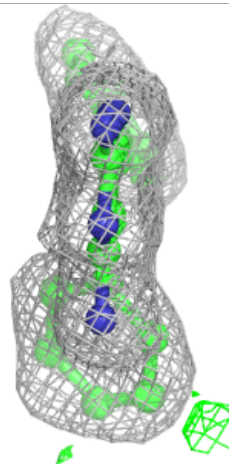
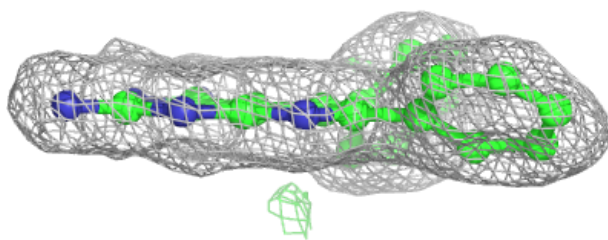
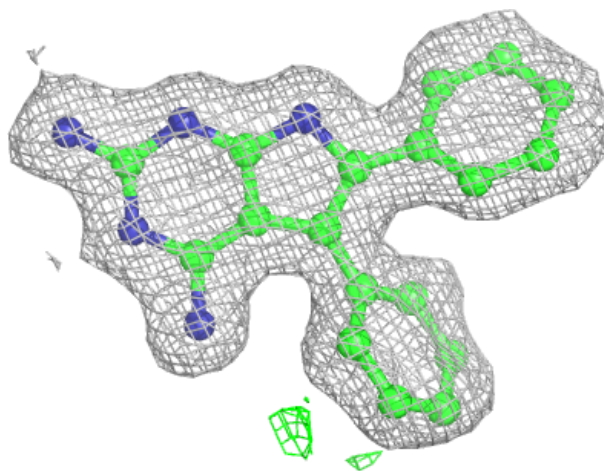
**Electron density around M2N D 1270:**

$2mF_o-DF_c$  (at 0.7 rmsd) in gray  
 $mF_o-DF_c$  (at 3 rmsd) in purple (negative)  
and green (positive)



**Electron density around M2N B 1270:**

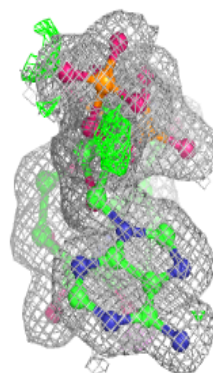
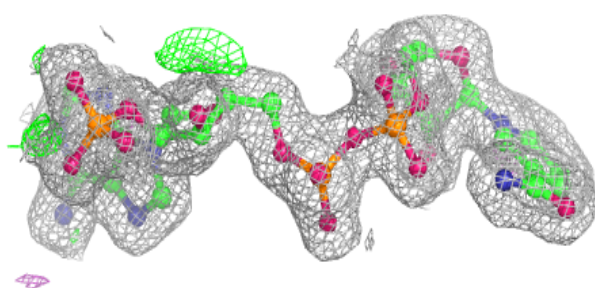
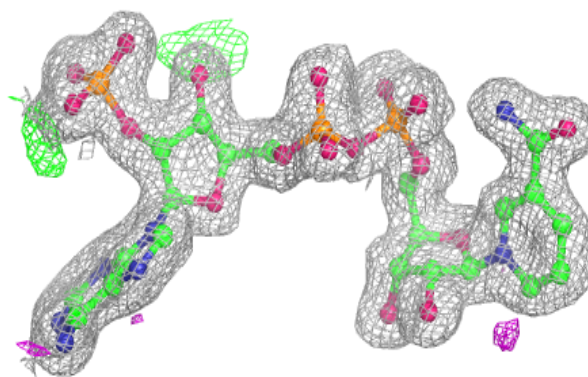
$2mF_o-DF_c$  (at 0.7 rmsd) in gray  
 $mF_o-DF_c$  (at 3 rmsd) in purple (negative)  
and green (positive)



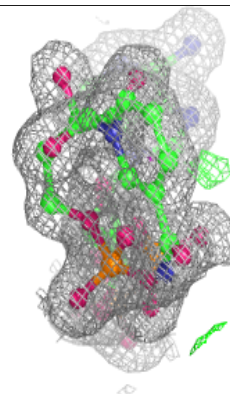
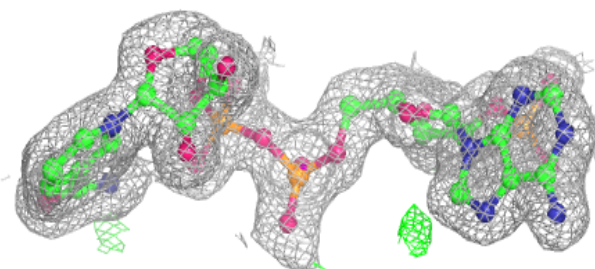
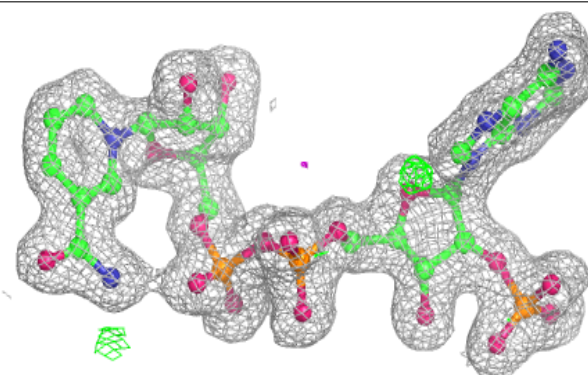


**Electron density around NAP C 1269:**

$2mF_o-DF_c$  (at 0.7 rmsd) in gray  
 $mF_o-DF_c$  (at 3 rmsd) in purple (negative)  
and green (positive)

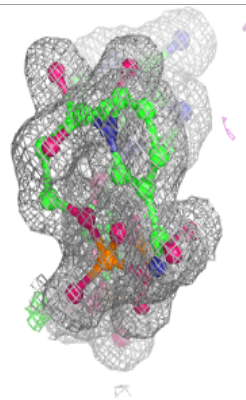
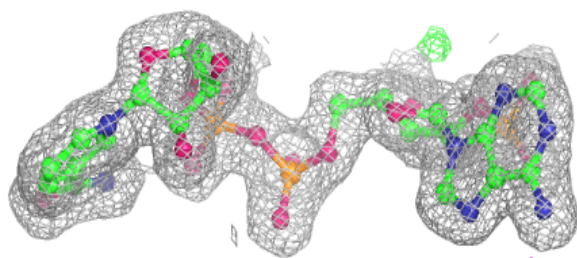
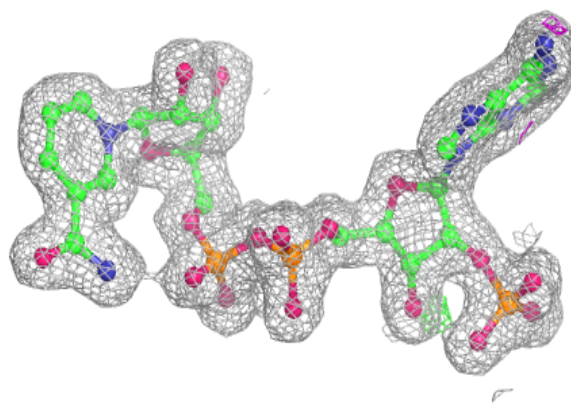
**Electron density around NAP D 1269:**

$2mF_o-DF_c$  (at 0.7 rmsd) in gray  
 $mF_o-DF_c$  (at 3 rmsd) in purple (negative)  
and green (positive)

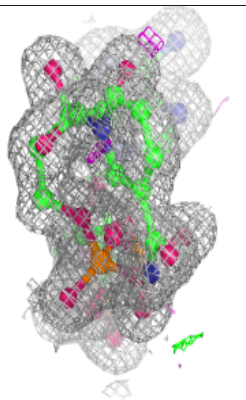
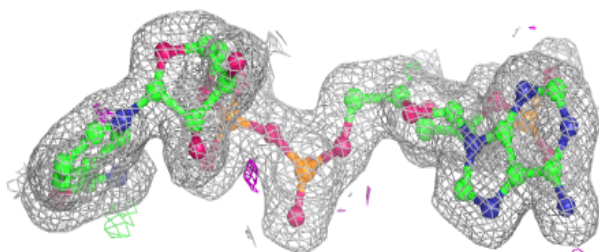
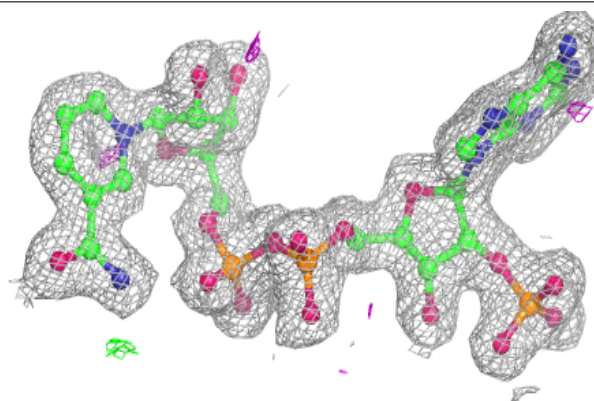


**Electron density around NAP A 1269:**

$2mF_o-DF_c$  (at 0.7 rmsd) in gray  
 $mF_o-DF_c$  (at 3 rmsd) in purple (negative)  
and green (positive)

**Electron density around NAP B 1269:**

$2mF_o-DF_c$  (at 0.7 rmsd) in gray  
 $mF_o-DF_c$  (at 3 rmsd) in purple (negative)  
and green (positive)





## 6.5 Other polymers [i](#)

There are no such residues in this entry.