



wwPDB EM Validation Summary Report ⓘ

Nov 10, 2024 – 12:15 pm GMT

PDB ID : 8CMU
EMDB ID : EMD-16746
Title : High resolution structure of the coagulation Factor XIII A2B2 heterotetramer complex.
Authors : Singh, S.; Urgular, D.; Hagelueken, G.; Geyer, M.; Biswas, A.
Deposited on : 2023-02-21
Resolution : 2.41 Å(reported)

This is a wwPDB EM Validation Summary Report for a publicly released PDB entry.

We welcome your comments at validation@mail.wwpdb.org

A user guide is available at

<https://www.wwpdb.org/validation/2017/EMValidationReportHelp>

with specific help available everywhere you see the ⓘ symbol.

The types of validation reports are described at

<http://www.wwpdb.org/validation/2017/FAQs#types>.

The following versions of software and data (see [references ⓘ](#)) were used in the production of this report:

EMDB validation analysis : 0.0.1.dev113
MolProbity : 4.02b-467
Percentile statistics : 20231227.v01 (using entries in the PDB archive December 27th 2023)
MapQ : 1.9.13
Ideal geometry (proteins) : Engh & Huber (2001)
Ideal geometry (DNA, RNA) : Parkinson et al. (1996)
Validation Pipeline (wwPDB-VP) : 2.39

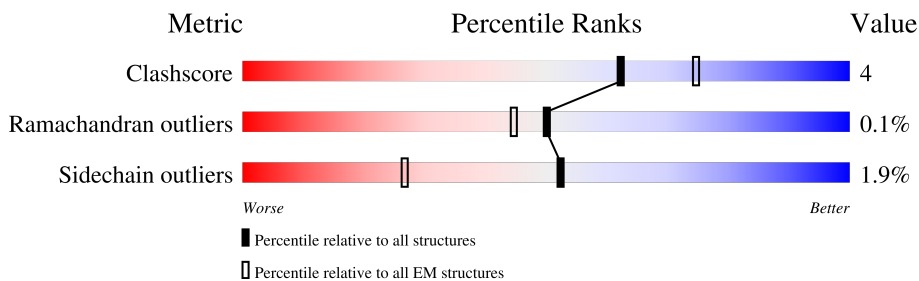
1 Overall quality at a glance

The following experimental techniques were used to determine the structure:

ELECTRON MICROSCOPY

The reported resolution of this entry is 2.41 Å.

Percentile scores (ranging between 0-100) for global validation metrics of the entry are shown in the following graphic. The table shows the number of entries on which the scores are based.



Metric	Whole archive (#Entries)	EM structures (#Entries)
Clashscore	210492	15764
Ramachandran outliers	207382	16835
Sidechain outliers	206894	16415

The table below summarises the geometric issues observed across the polymeric chains and their fit to the map. The red, orange, yellow and green segments of the bar indicate the fraction of residues that contain outliers for ≥ 3 , 2, 1 and 0 types of geometric quality criteria respectively. A grey segment represents the fraction of residues that are not modelled. The numeric value for each fraction is indicated below the corresponding segment, with a dot representing fractions $\leq 5\%$. The upper red bar (where present) indicates the fraction of residues that have poor fit to the EM map (all-atom inclusion $< 40\%$). The numeric value is given above the bar.

Mol	Chain	Length	Quality of chain
1	A	732	
1	B	732	
2	C	661	
2	D	661	

2 Entry composition [i](#)

There are 3 unique types of molecules in this entry. The entry contains 14328 atoms, of which 0 are hydrogens and 0 are deuteriums.

In the tables below, the AltConf column contains the number of residues with at least one atom in alternate conformation and the Trace column contains the number of residues modelled with at most 2 atoms.

- Molecule 1 is a protein called Coagulation factor XIII A chain.

Mol	Chain	Residues	Atoms					AltConf	Trace
			Total	C	N	O	S		
1	A	722	Total	C	N	O	S	0	0
			5791	3670	1001	1093	27		
1	B	722	Total	C	N	O	S	0	0
			5791	3670	1001	1093	27		

- Molecule 2 is a protein called Coagulation factor XIII B chain.

Mol	Chain	Residues	Atoms					AltConf	Trace
			Total	C	N	O	S		
2	C	125	Total	C	N	O	S	0	0
			999	632	164	193	10		
2	D	125	Total	C	N	O	S	0	0
			999	632	164	193	10		

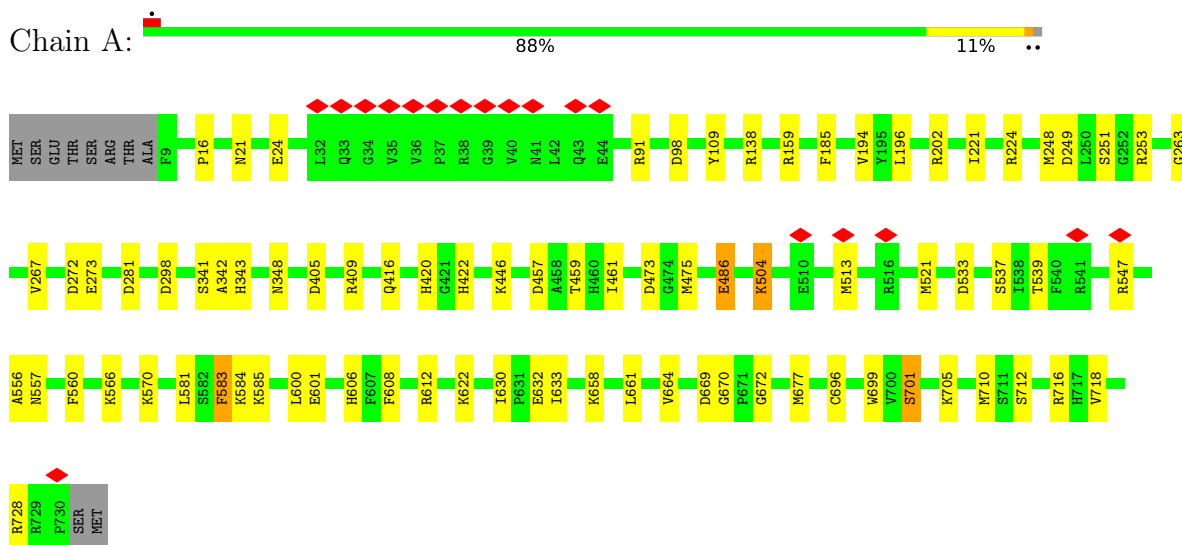
- Molecule 3 is water.

Mol	Chain	Residues	Atoms		AltConf
3	A	366	Total	O	0
			366	366	
3	B	339	Total	O	0
			339	339	
3	C	21	Total	O	0
			21	21	
3	D	22	Total	O	0
			22	22	

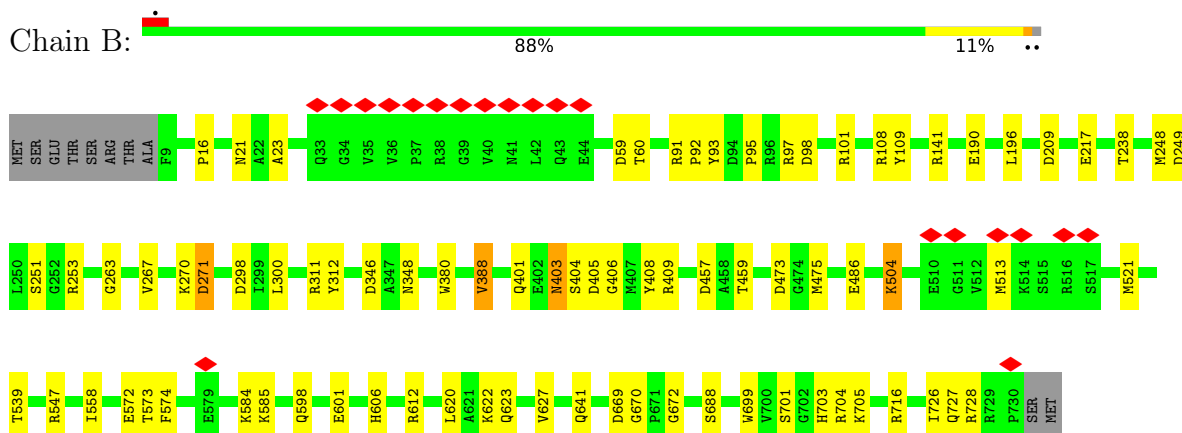
3 Residue-property plots [i](#)

These plots are drawn for all protein, RNA, DNA and oligosaccharide chains in the entry. The first graphic for a chain summarises the proportions of the various outlier classes displayed in the second graphic. The second graphic shows the sequence view annotated by issues in geometry and atom inclusion in map density. Residues are color-coded according to the number of geometric quality criteria for which they contain at least one outlier: green = 0, yellow = 1, orange = 2 and red = 3 or more. A red diamond above a residue indicates a poor fit to the EM map for this residue (all-atom inclusion < 40%). Stretches of 2 or more consecutive residues without any outlier are shown as a green connector. Residues present in the sample, but not in the model, are shown in grey.

- Molecule 1: Coagulation factor XIII A chain

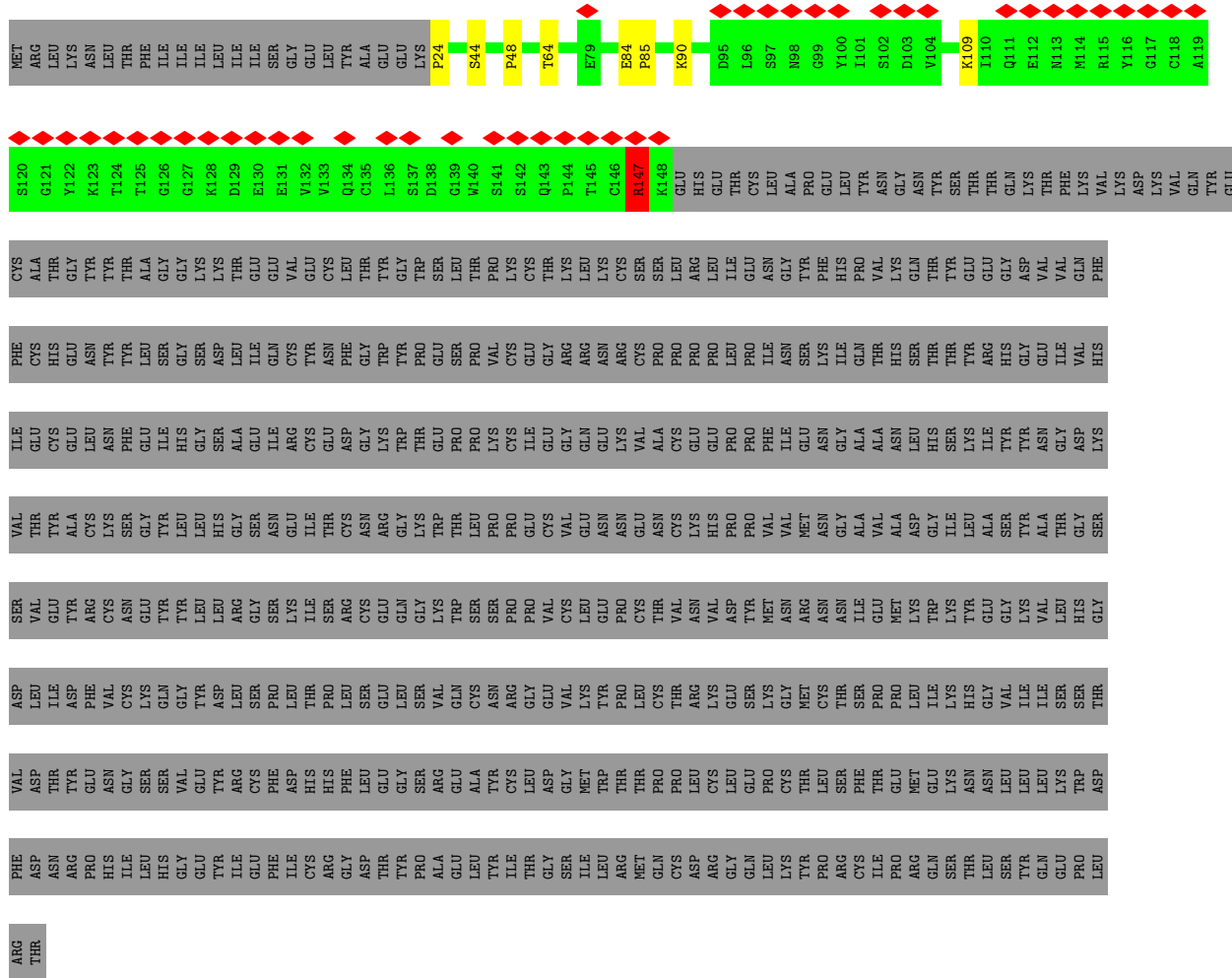


- Molecule 1: Coagulation factor XIII A chain

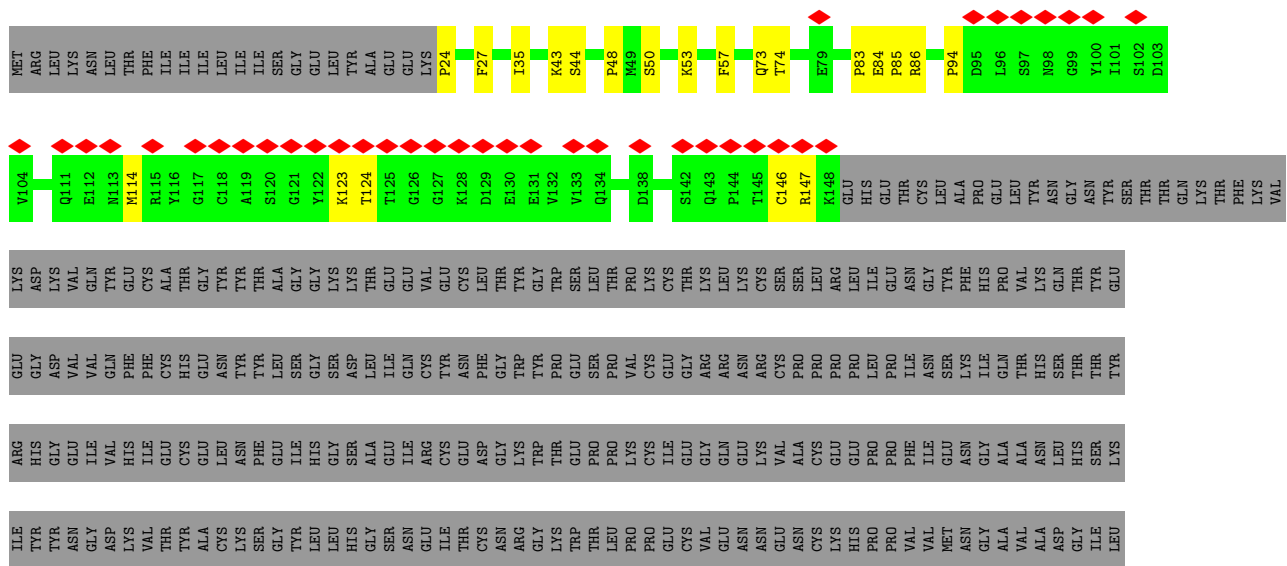


- Molecule 2: Coagulation factor XIII B chain





● Molecule 2: Coagulation factor XIII B chain



ALA
SER
TYR
LYS
VAL
ALA
LEU
THR
GLY
HIS
SER
GLY
SER
SER
VAL
LEU
VAL
TYR
TYR
ARG
CYS
ASN
ASN
GLU
TYR
TYR
LEU
LEU
LEU
LEU
ARG
GLY
SER
GLY
PRO
SER
LEU
LYS
LYS
GLN
GLY
GLY
TYR
TYR
ASP
LEU
ARG
LEU
SER
GLY
PRO
SER
LEU
LYS
LYS
GLN
GLY
GLY
VAL
LYS
TRP
SER
SER
ASN
PRO
PRO
GLY
PRO
VAL
VAL
CYS
LEU
LEU
GLU
CYS
THR
THR
VAL
ASN
ASN
VAL
VAL
SER
TYR
TYR
MET
LYS
ASN
ASN
ARG
CYS
ASN
ASN
ILE
GLU
PRO
GLY
MET
LYS
THR
LEU
LYS
THR
HIS

GLY
GLY
LYS
VAL
ALA
LEU
HIS
SER
GLY
ASP
SER
LEU
ILE
ASP
TYR
PHE
VAL
CYS
LYS
GLN
TYR
GLY
TYR
TYR
ASP
LEU
ARG
LEU
SER
PRO
SER
LEU
LEU
GLY
GLN
VAL
GLN
CYS
TRP
SER
ASN
ASN
ARG
CYS
GLY
VAL
GLY
LEU
TYR
TYR
PRO
PRO
CYS
THR
THR
VAL
ASN
ASN
ARG
LYS
GLU
SER
TYR
LYS
MET
GLY
MET
CYS
THR
SER
THR
SER
PHE
SER
ILE
PRO
GLU
PRO
MET
LEU
ILE
LYS
LYS
HIS

GLY
VAL
ILE
SER
LEU
TRP
ASP
THR
VAL
ASP
THR
ASN
TYR
GLU
ASN
GLY
ASN
GLY
SER
SER
SER
VAL
GLY
GLY
TYR
TYR
ARG
CYS
PHE
PHE
ASP
ASP
HIS
HIS
HIS
PHE
LEU
LEU
GLY
GLY
SER
SER
TYR
TYR
ARG
GLU
GLU
ALA
GLU
ALA
TYR
TYR
CYS
LEU
THR
GLY
ASP
GLY
MET
MET
TRP
THR
THR
PRO
PRO
PRO
LEU
LEU
CYS
GLY
LEU
GLU
GLY
GLY
CYS
THR
THR
LEU
SER
PHE
SER
SER
PHE
THR
THR
GLU
MET
MET
GLU
LYS
ASN

ASN
LEU
LEU
LEU
LEU
GLN
GLY
TRP
ASP
PHE
ASP
ASN
ARG
ASN
PRO
HIS
HIS
ILE
LEU
LEU
HIS
HIS
GLY
GLY
GLY
TYR
TYR
ILE
GLU
GLU
PHE
PHE
ILE
ILE
CYS
ARG
GLY
GLY
ASP
THR
THR
TYR
TYR
PRO
PRO
ALA
ALA
GLU
LEU
LEU
TYR
TYR
ILE
ILE
THR
GLY
THR
SER
SER
ILE
LEU
LEU
ARG
MET
MET
GLN
CYS
CYS
ASP
ASP
ARG
ARG
GLY
GLN
GLY
LEU
LEU
LYS
LYS
TYR
TYR
PRO
PRO
ARG
ARG
CYS
CYS
ILE
ILE
PRO
PRO
ARG
ARG
GLN
GLN
SER
SER
THR

LEU
SER
TYR
GLN
GLU
LEU
ARG
THR

4 Experimental information

Property	Value	Source
EM reconstruction method	SINGLE PARTICLE	Depositor
Imposed symmetry	POINT, Not provided	
Number of particles used	333272	Depositor
Resolution determination method	FSC 0.143 CUT-OFF	Depositor
CTF correction method	PHASE FLIPPING AND AMPLITUDE CORRECTION	Depositor
Microscope	FEI TITAN KRIOS	Depositor
Voltage (kV)	300	Depositor
Electron dose ($e^-/\text{\AA}^2$)	50	Depositor
Minimum defocus (nm)	800	Depositor
Maximum defocus (nm)	1800	Depositor
Magnification	Not provided	
Image detector	FEI FALCON IV (4k x 4k)	Depositor
Maximum map value	1.166	Depositor
Minimum map value	-0.807	Depositor
Average map value	0.000	Depositor
Map value standard deviation	0.020	Depositor
Recommended contour level	0.0899	Depositor
Map size (Å)	356.864, 356.864, 356.864	wwPDB
Map dimensions	512, 512, 512	wwPDB
Map angles (°)	90.0, 90.0, 90.0	wwPDB
Pixel spacing (Å)	0.697, 0.697, 0.697	Depositor

5 Model quality [i](#)

5.1 Standard geometry [i](#)

The Z score for a bond length (or angle) is the number of standard deviations the observed value is removed from the expected value. A bond length (or angle) with $|Z| > 5$ is considered an outlier worth inspection. RMSZ is the root-mean-square of all Z scores of the bond lengths (or angles).

Mol	Chain	Bond lengths		Bond angles	
		RMSZ	# Z >5	RMSZ	# Z >5
1	A	0.26	0/5928	0.54	0/8045
1	B	0.26	0/5928	0.55	0/8045
2	C	0.27	0/1026	0.54	0/1382
2	D	0.26	0/1026	0.54	0/1382
All	All	0.26	0/13908	0.54	0/18854

Chiral center outliers are detected by calculating the chiral volume of a chiral center and verifying if the center is modelled as a planar moiety or with the opposite hand. A planarity outlier is detected by checking planarity of atoms in a peptide group, atoms in a mainchain group or atoms of a sidechain that are expected to be planar.

Mol	Chain	#Chirality outliers	#Planarity outliers
1	B	0	2
2	C	0	1
All	All	0	3

There are no bond length outliers.

There are no bond angle outliers.

There are no chirality outliers.

All (3) planarity outliers are listed below:

Mol	Chain	Res	Type	Group
1	B	547	ARG	Sidechain
1	B	97	ARG	Sidechain
2	C	147	ARG	Sidechain

5.2 Too-close contacts [i](#)

In the following table, the Non-H and H(model) columns list the number of non-hydrogen atoms and hydrogen atoms in the chain respectively. The H(added) column lists the number of hydrogen atoms added and optimized by MolProbity. The Clashes column lists the number of clashes within

the asymmetric unit, whereas Symm-Clashes lists symmetry-related clashes.

Mol	Chain	Non-H	H(model)	H(added)	Clashes	Symm-Clashes
1	A	5791	0	5655	48	0
1	B	5791	0	5655	45	0
2	C	999	0	948	6	0
2	D	999	0	946	12	0
3	A	366	0	0	13	0
3	B	339	0	0	7	0
3	C	21	0	0	0	0
3	D	22	0	0	3	0
All	All	14328	0	13204	111	0

The all-atom clashscore is defined as the number of clashes found per 1000 atoms (including hydrogen atoms). The all-atom clashscore for this structure is 4.

The worst 5 of 111 close contacts within the same asymmetric unit are listed below, sorted by their clash magnitude.

Atom-1	Atom-2	Interatomic distance (Å)	Clash overlap (Å)
2:D:74:THR:HG21	2:D:85:PRO:HG3	1.70	0.72
1:B:612:ARG:NH2	3:B:804:HOH:O	2.24	0.71
1:A:343:HIS:O	3:A:801:HOH:O	2.10	0.68
1:B:23:ALA:HB1	1:B:108:ARG:HE	1.59	0.67
1:B:348:ASN:O	3:B:801:HOH:O	2.13	0.67

There are no symmetry-related clashes.

5.3 Torsion angles [i](#)

5.3.1 Protein backbone [i](#)

In the following table, the Percentiles column shows the percent Ramachandran outliers of the chain as a percentile score with respect to all PDB entries followed by that with respect to all EM entries.

The Analysed column shows the number of residues for which the backbone conformation was analysed, and the total number of residues.

Mol	Chain	Analysed	Favoured	Allowed	Outliers	Percentiles	
1	A	720/732 (98%)	695 (96%)	25 (4%)	0	100	100
1	B	720/732 (98%)	695 (96%)	23 (3%)	2 (0%)	37	50
2	C	123/661 (19%)	117 (95%)	6 (5%)	0	100	100

Continued on next page...

Continued from previous page...

Mol	Chain	Analysed	Favoured	Allowed	Outliers	Percentiles	
2	D	123/661 (19%)	120 (98%)	3 (2%)	0	100	100
All	All	1686/2786 (60%)	1627 (96%)	57 (3%)	2 (0%)	50	64

All (2) Ramachandran outliers are listed below:

Mol	Chain	Res	Type
1	B	406	GLY
1	B	271	ASP

5.3.2 Protein sidechains [i](#)

In the following table, the Percentiles column shows the percent sidechain outliers of the chain as a percentile score with respect to all PDB entries followed by that with respect to all EM entries.

The Analysed column shows the number of residues for which the sidechain conformation was analysed, and the total number of residues.

Mol	Chain	Analysed	Rotameric	Outliers	Percentiles	
1	A	636/645 (99%)	620 (98%)	16 (2%)	42	61
1	B	636/645 (99%)	626 (98%)	10 (2%)	58	75
2	C	111/594 (19%)	109 (98%)	2 (2%)	54	72
2	D	111/594 (19%)	110 (99%)	1 (1%)	75	87
All	All	1494/2478 (60%)	1465 (98%)	29 (2%)	52	70

5 of 29 residues with a non-rotameric sidechain are listed below:

Mol	Chain	Res	Type
1	A	583	PHE
2	C	147	ARG
1	B	101	ARG
1	B	513	MET
1	B	21	ASN

Sometimes sidechains can be flipped to improve hydrogen bonding and reduce clashes. All (5) such sidechains are listed below:

Mol	Chain	Res	Type
1	A	451	HIS
1	B	219	ASN

Continued on next page...

Continued from previous page...

Mol	Chain	Res	Type
1	B	372	ASN
1	B	403	ASN
2	D	37	GLN

5.3.3 RNA [i](#)

There are no RNA molecules in this entry.

5.4 Non-standard residues in protein, DNA, RNA chains [i](#)

There are no non-standard protein/DNA/RNA residues in this entry.

5.5 Carbohydrates [i](#)

There are no oligosaccharides in this entry.

5.6 Ligand geometry [i](#)

There are no ligands in this entry.

5.7 Other polymers [i](#)

There are no such residues in this entry.

5.8 Polymer linkage issues [i](#)

There are no chain breaks in this entry.

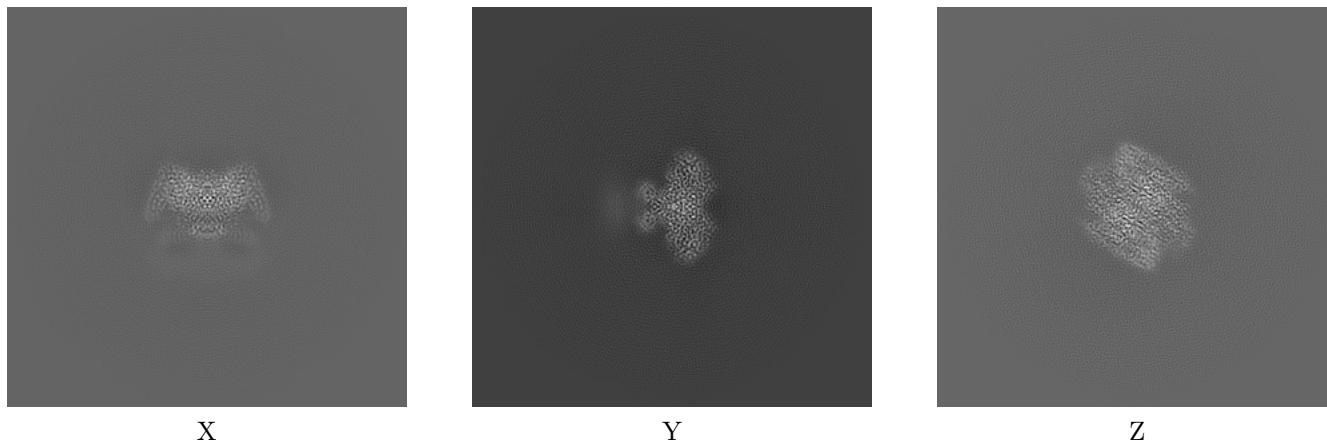
6 Map visualisation [i](#)

This section contains visualisations of the EMDB entry EMD-16746. These allow visual inspection of the internal detail of the map and identification of artifacts.

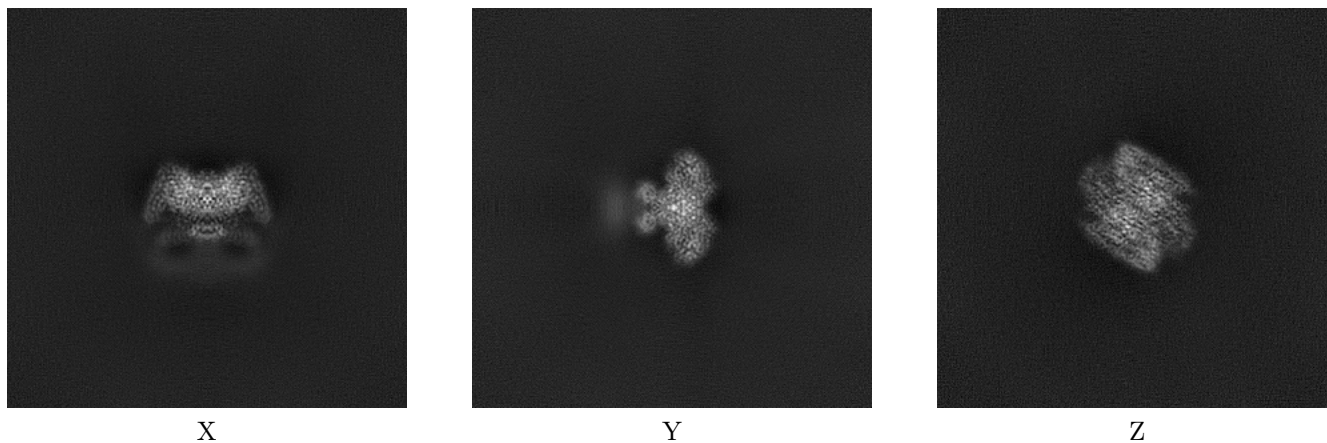
Images derived from a raw map, generated by summing the deposited half-maps, are presented below the corresponding image components of the primary map to allow further visual inspection and comparison with those of the primary map.

6.1 Orthogonal projections [i](#)

6.1.1 Primary map



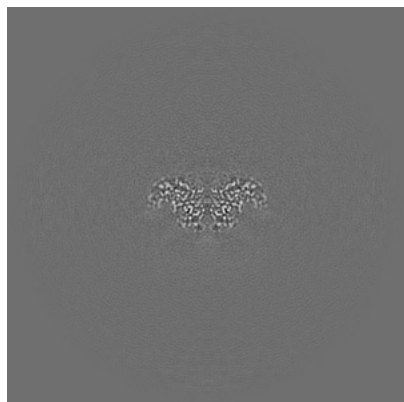
6.1.2 Raw map



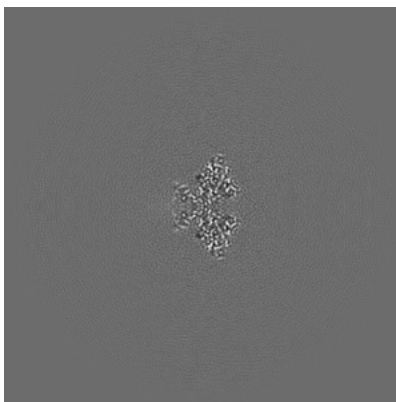
The images above show the map projected in three orthogonal directions.

6.2 Central slices [i](#)

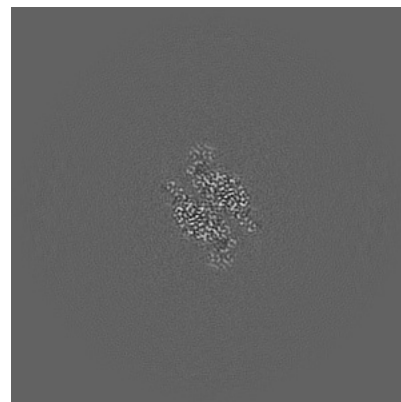
6.2.1 Primary map



X Index: 256

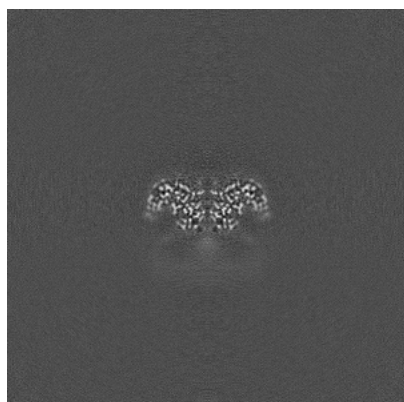


Y Index: 256

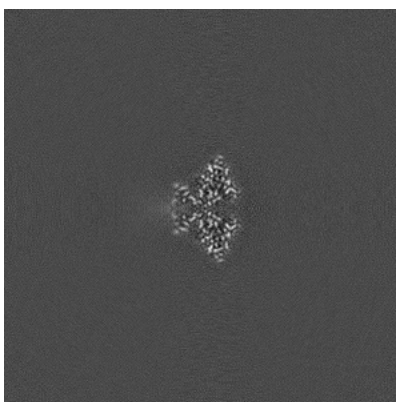


Z Index: 256

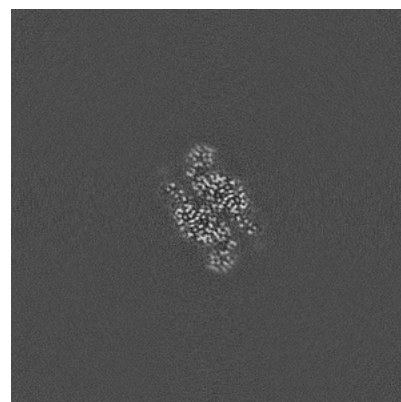
6.2.2 Raw map



X Index: 256



Y Index: 256

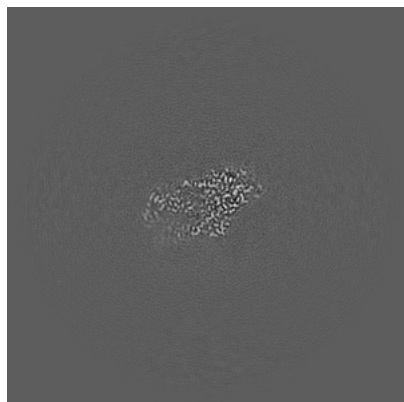


Z Index: 256

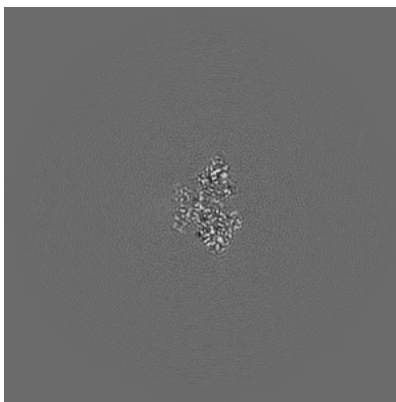
The images above show central slices of the map in three orthogonal directions.

6.3 Largest variance slices [i](#)

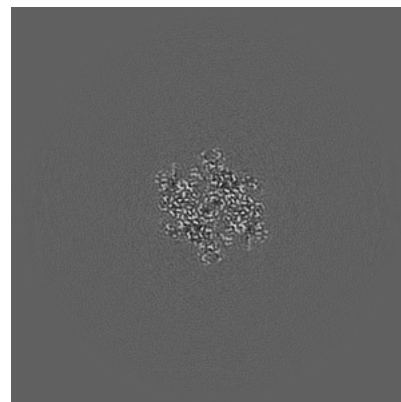
6.3.1 Primary map



X Index: 270

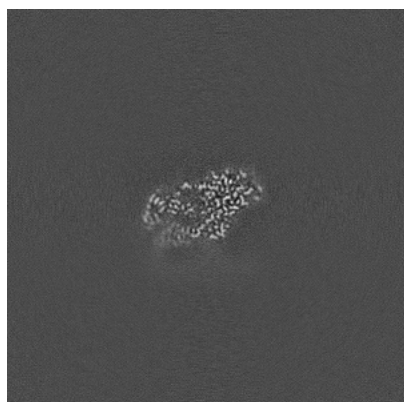


Y Index: 251

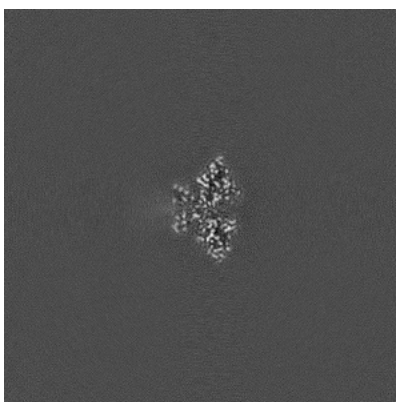


Z Index: 275

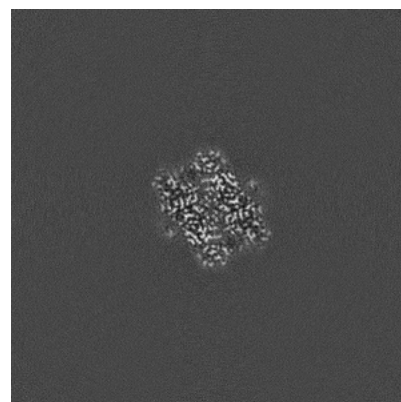
6.3.2 Raw map



X Index: 270



Y Index: 258

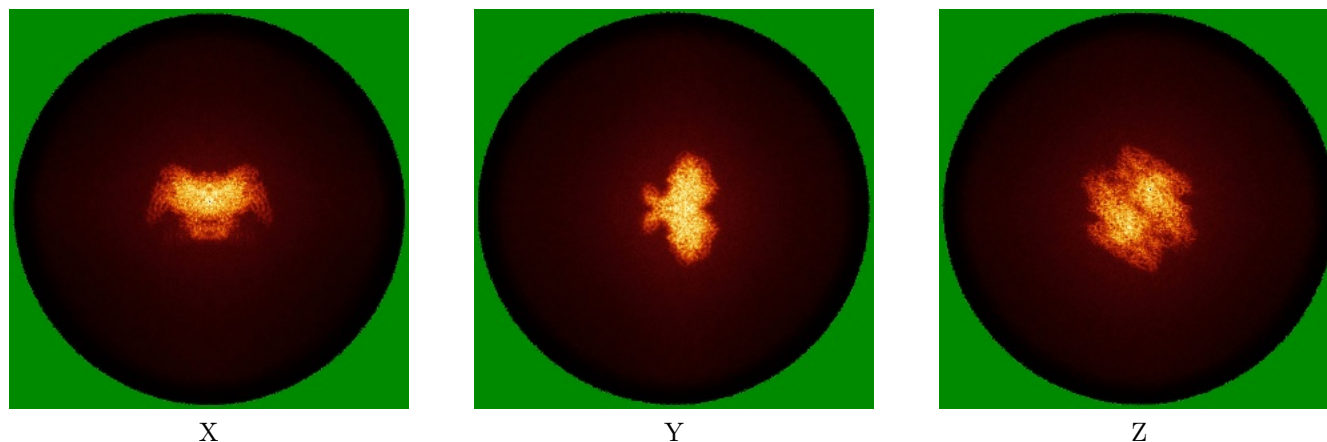


Z Index: 271

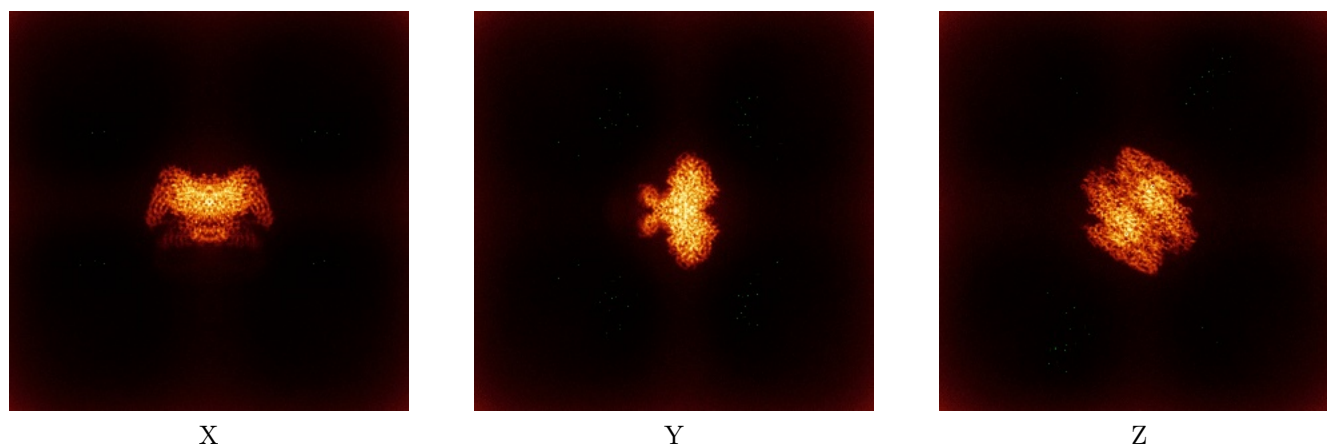
The images above show the largest variance slices of the map in three orthogonal directions.

6.4 Orthogonal standard-deviation projections (False-color) [i](#)

6.4.1 Primary map



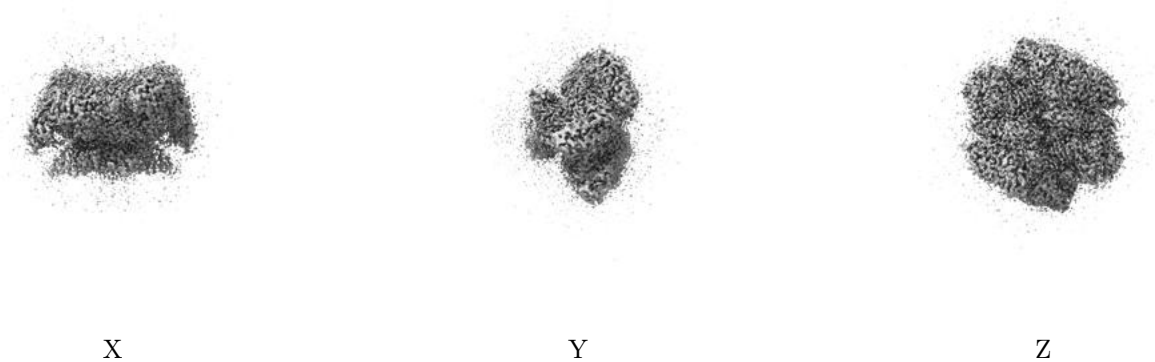
6.4.2 Raw map



The images above show the map standard deviation projections with false color in three orthogonal directions. Minimum values are shown in green, max in blue, and dark to light orange shades represent small to large values respectively.

6.5 Orthogonal surface views [i](#)

6.5.1 Primary map



The images above show the 3D surface view of the map at the recommended contour level 0.0899. These images, in conjunction with the slice images, may facilitate assessment of whether an appropriate contour level has been provided.

6.5.2 Raw map



These images show the 3D surface of the raw map. The raw map's contour level was selected so that its surface encloses the same volume as the primary map does at its recommended contour level.

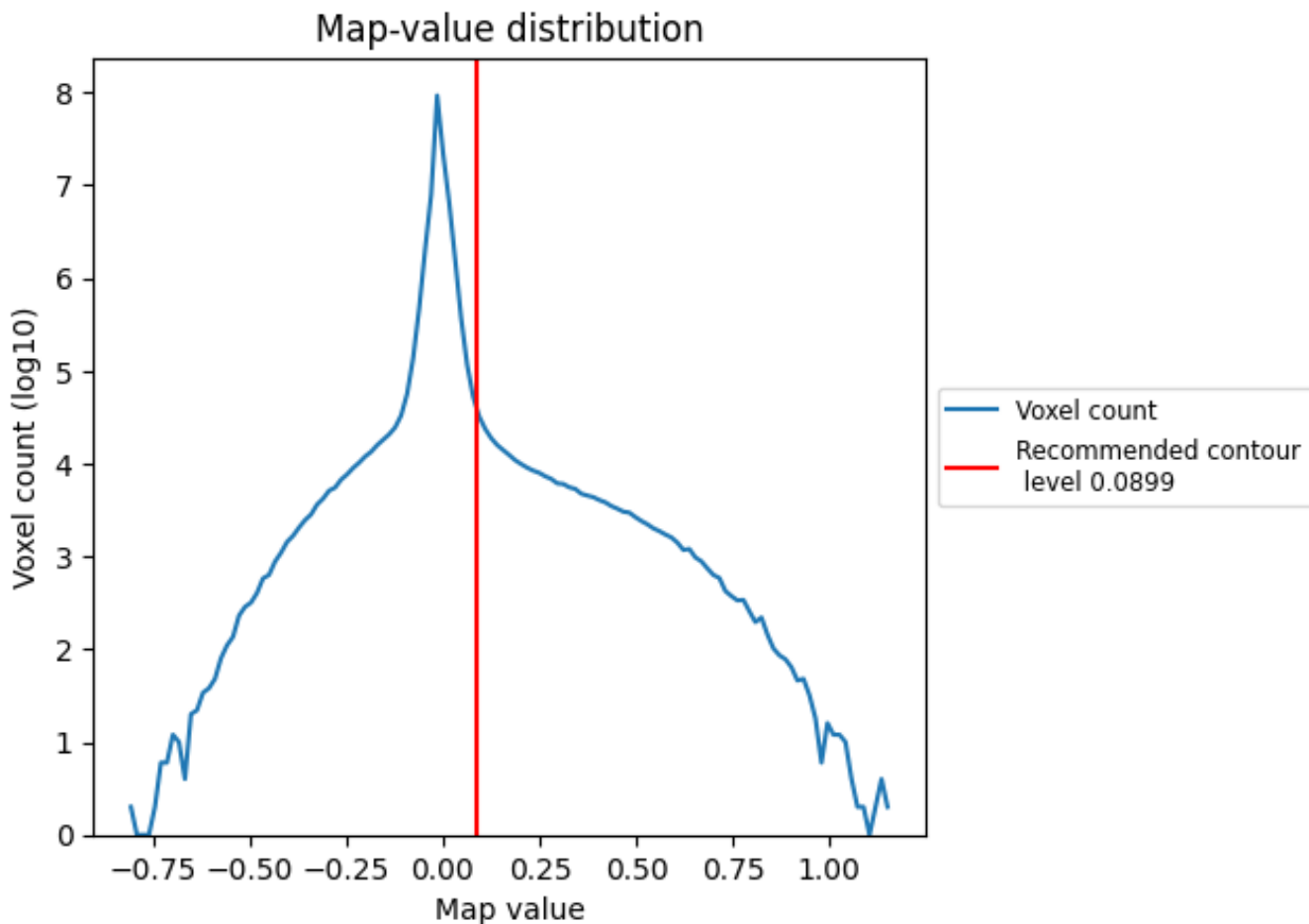
6.6 Mask visualisation [i](#)

This section was not generated. No masks/segmentation were deposited.

7 Map analysis [i](#)

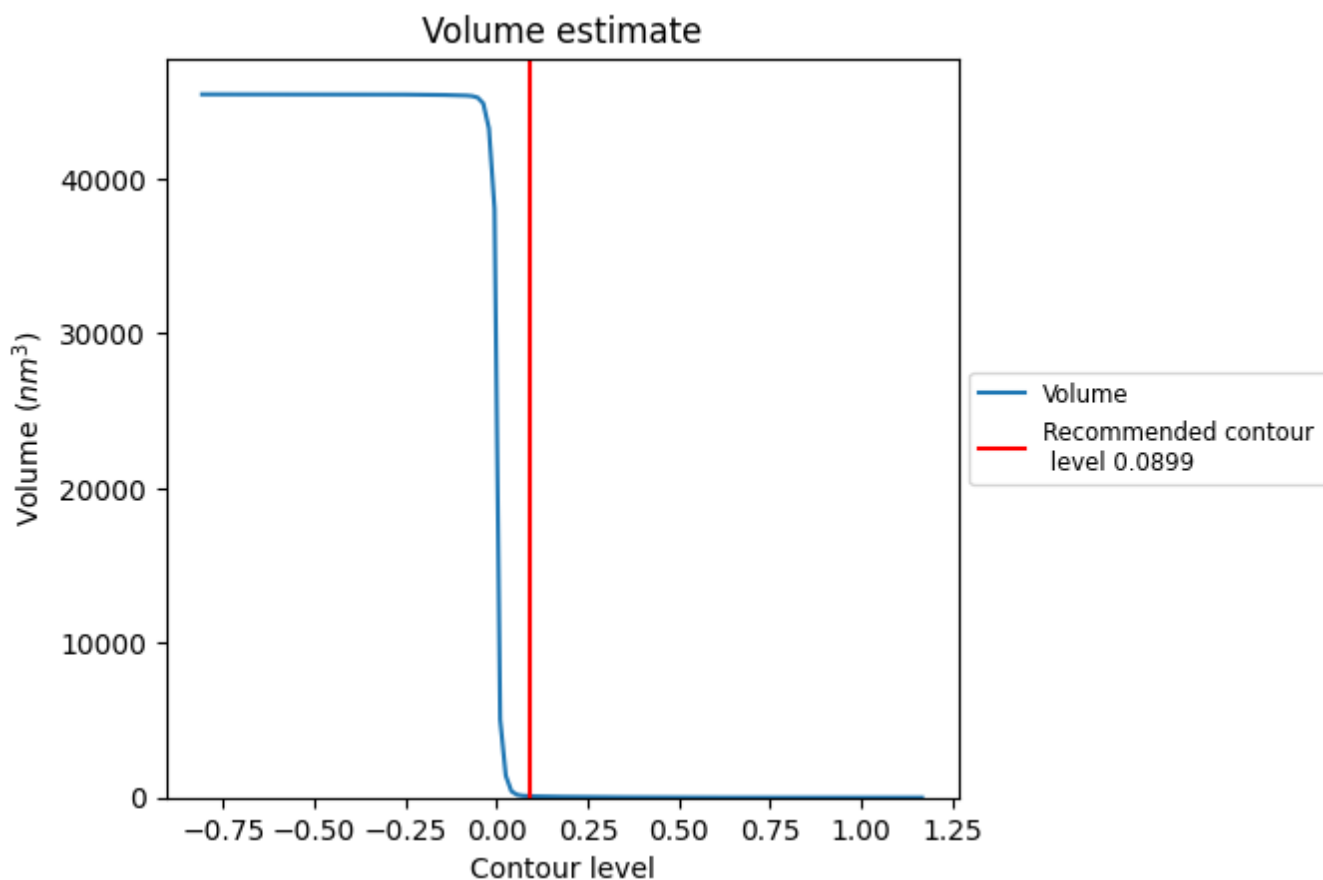
This section contains the results of statistical analysis of the map.

7.1 Map-value distribution [i](#)



The map-value distribution is plotted in 128 intervals along the x-axis. The y-axis is logarithmic. A spike in this graph at zero usually indicates that the volume has been masked.

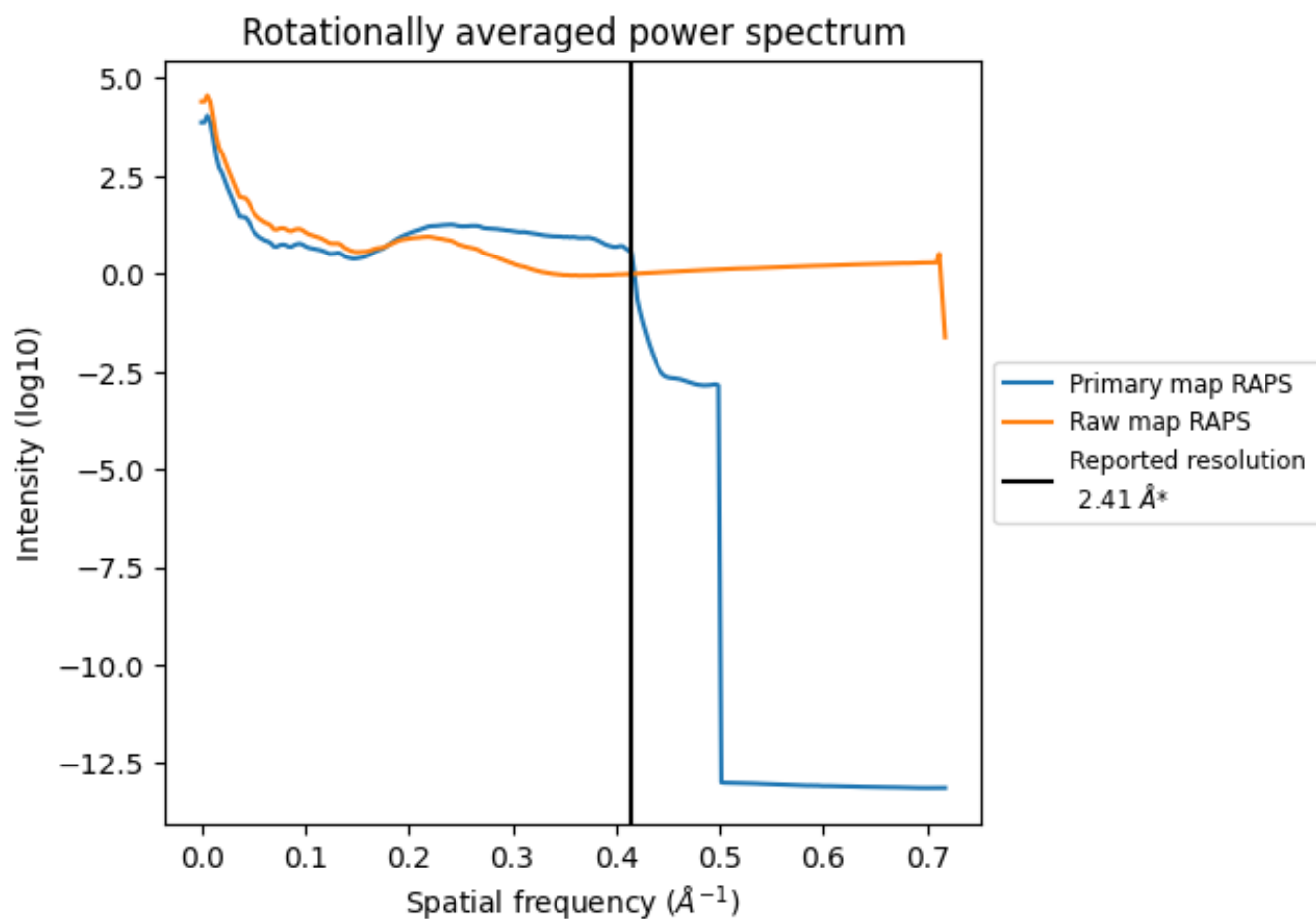
7.2 Volume estimate [\(i\)](#)



The volume at the recommended contour level is 92 nm³; this corresponds to an approximate mass of 83 kDa.

The volume estimate graph shows how the enclosed volume varies with the contour level. The recommended contour level is shown as a vertical line and the intersection between the line and the curve gives the volume of the enclosed surface at the given level.

7.3 Rotationally averaged power spectrum [i](#)

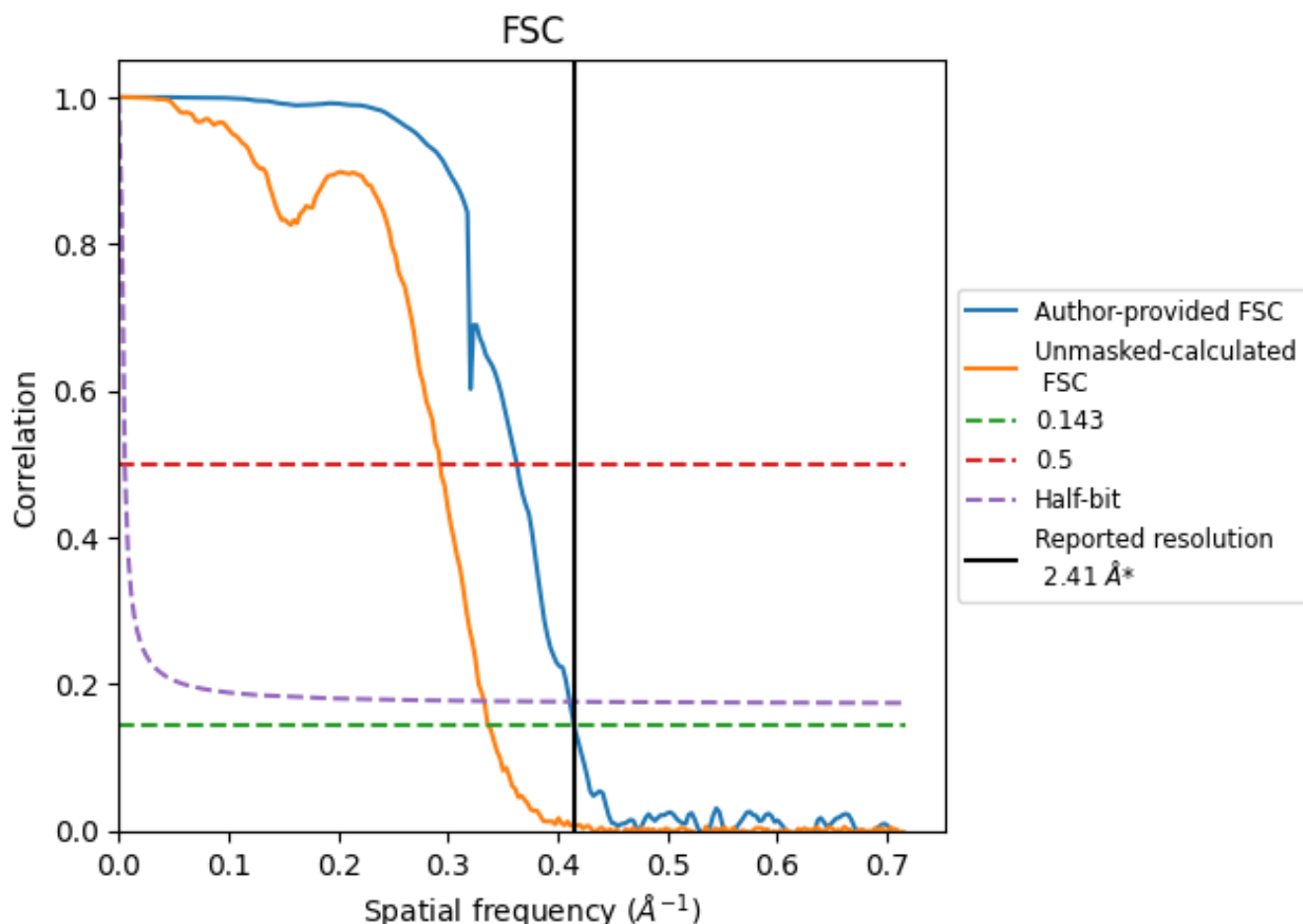


*Reported resolution corresponds to spatial frequency of 0.415 Å⁻¹

8 Fourier-Shell correlation [i](#)

Fourier-Shell Correlation (FSC) is the most commonly used method to estimate the resolution of single-particle and subtomogram-averaged maps. The shape of the curve depends on the imposed symmetry, mask and whether or not the two 3D reconstructions used were processed from a common reference. The reported resolution is shown as a black line. A curve is displayed for the half-bit criterion in addition to lines showing the 0.143 gold standard cut-off and 0.5 cut-off.

8.1 FSC [i](#)



*Reported resolution corresponds to spatial frequency of 0.415 Å⁻¹

8.2 Resolution estimates [i](#)

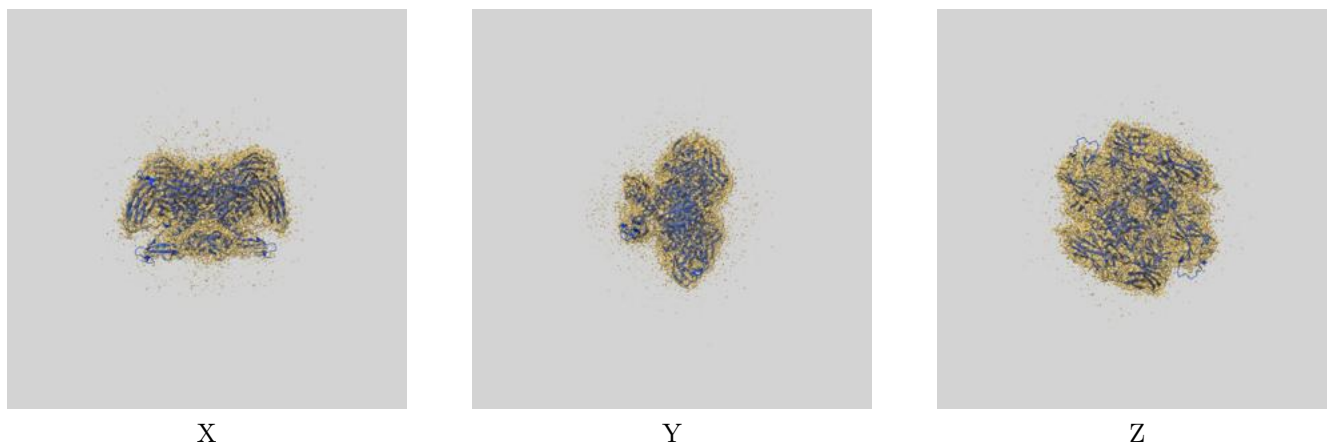
Resolution estimate (Å)	Estimation criterion (FSC cut-off)		
	0.143	0.5	Half-bit
Reported by author	2.41	-	-
Author-provided FSC curve	2.41	2.76	2.43
Unmasked-calculated*	2.97	3.41	3.00

*Resolution estimate based on FSC curve calculated by comparison of deposited half-maps. The value from deposited half-maps intersecting FSC 0.143 CUT-OFF 2.97 differs from the reported value 2.41 by more than 10 %

9 Map-model fit [i](#)

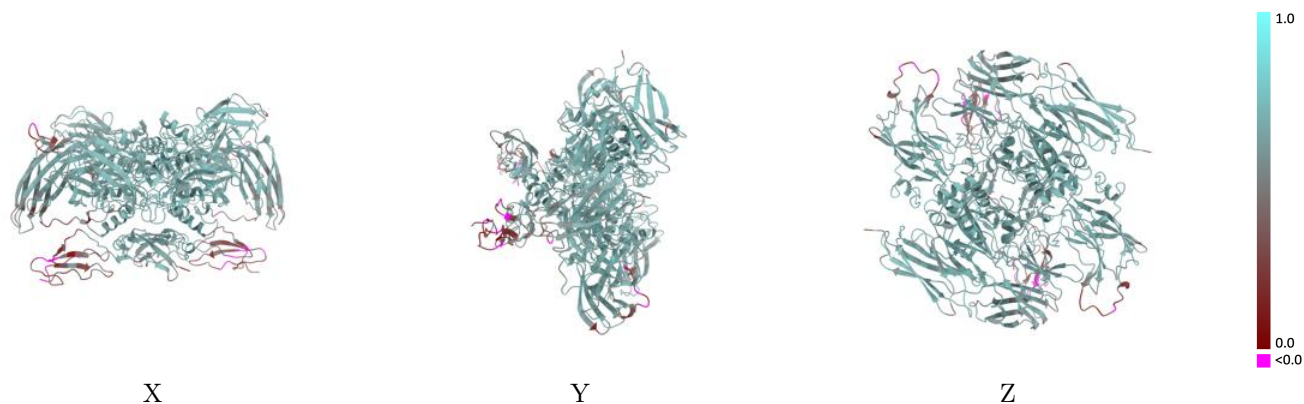
This section contains information regarding the fit between EMDB map EMD-16746 and PDB model 8CMU. Per-residue inclusion information can be found in section [3](#) on page [4](#).

9.1 Map-model overlay [i](#)



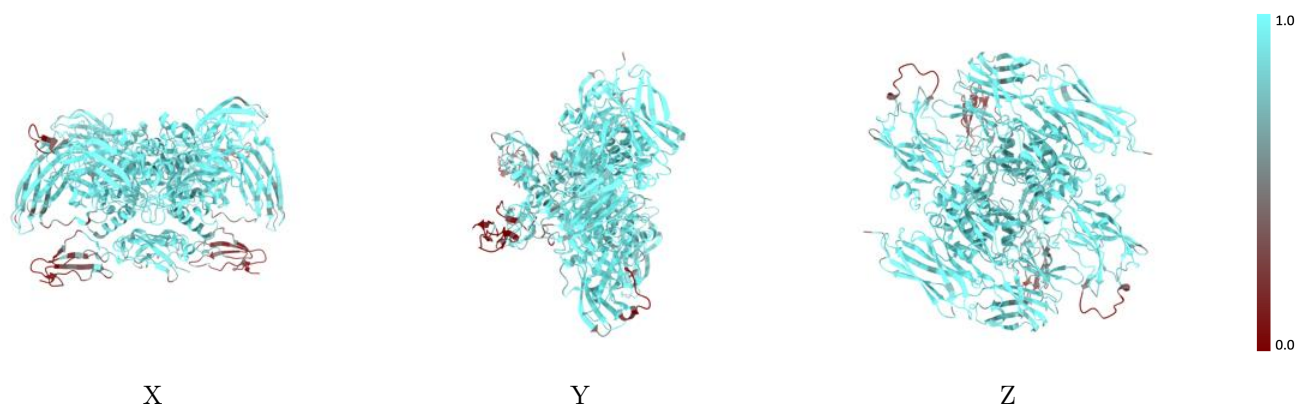
The images above show the 3D surface view of the map at the recommended contour level 0.0899 at 50% transparency in yellow overlaid with a ribbon representation of the model coloured in blue. These images allow for the visual assessment of the quality of fit between the atomic model and the map.

9.2 Q-score mapped to coordinate model [\(i\)](#)



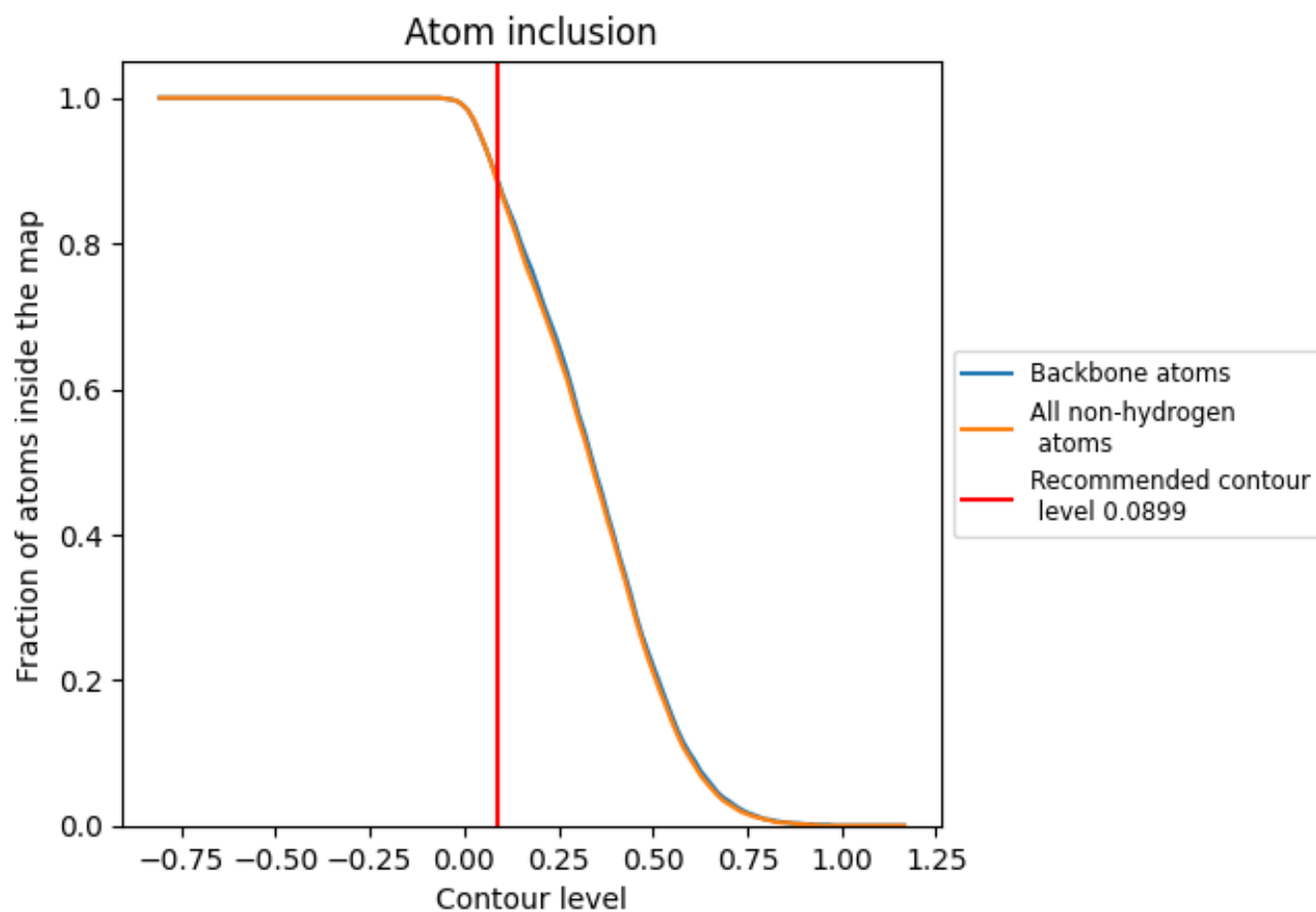
The images above show the model with each residue coloured according to its Q-score. This shows their resolvability in the map with higher Q-score values reflecting better resolvability. Please note: Q-score is calculating the resolvability of atoms, and thus high values are only expected at resolutions at which atoms can be resolved. Low Q-score values may therefore be expected for many entries.

9.3 Atom inclusion mapped to coordinate model [\(i\)](#)



The images above show the model with each residue coloured according to its atom inclusion. This shows to what extent they are inside the map at the recommended contour level (0.0899).











9.4 Atom inclusion [i](#)



At the recommended contour level, 88% of all backbone atoms, 88% of all non-hydrogen atoms, are inside the map.

9.5 Map-model fit summary [i](#)

The table lists the average atom inclusion at the recommended contour level (0.0899) and Q-score for the entire model and for each chain.

Chain	Atom inclusion	Q-score
All	 0.8810	 0.6010
A	 0.9240	 0.6270
B	 0.9270	 0.6270
C	 0.6100	 0.4340
D	 0.6580	 0.4610

