



Full wwPDB EM Validation Report ⓘ

Nov 19, 2022 – 07:21 PM EST

PDB ID : 3CNF
EMDB ID : EMD-1508
Title : 3.88 Angstrom structure of cytoplasmic polyhedrosis virus by cryo-electron microscopy
Authors : Yu, X.; Jin, L.; Zhou, Z.H.
Deposited on : 2008-03-25
Resolution : 3.88 Å(reported)

This is a Full wwPDB EM Validation Report for a publicly released PDB entry.

We welcome your comments at validation@mail.wwpdb.org

A user guide is available at

<https://www.wwpdb.org/validation/2017/EMValidationReportHelp>

with specific help available everywhere you see the ⓘ symbol.

The types of validation reports are described at

<http://www.wwpdb.org/validation/2017/FAQs#types>.

The following versions of software and data (see [references ⓘ](#)) were used in the production of this report:

EMDB validation analysis : 0.0.1.dev43
MolProbity : 4.02b-467
Percentile statistics : 20191225.v01 (using entries in the PDB archive December 25th 2019)
MapQ : 1.9.9
Ideal geometry (proteins) : Engh & Huber (2001)
Ideal geometry (DNA, RNA) : Parkinson et al. (1996)
Validation Pipeline (wwPDB-VP) : 2.31.3

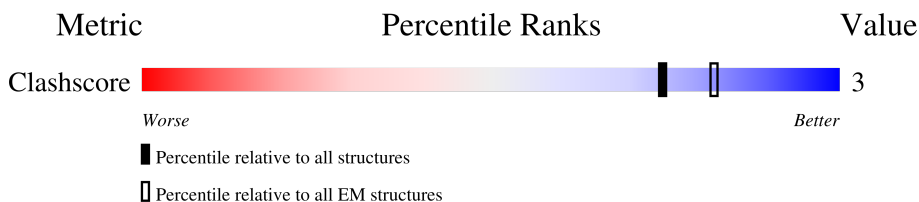
1 Overall quality at a glance i

The following experimental techniques were used to determine the structure:

ELECTRON MICROSCOPY


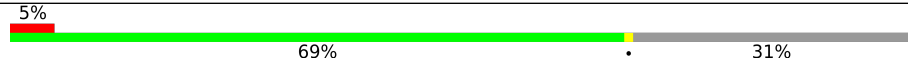

The reported resolution of this entry is 3.88 Å.

Percentile scores (ranging between 0-100) for global validation metrics of the entry are shown in the following graphic. The table shows the number of entries on which the scores are based.



Metric	Whole archive (#Entries)	EM structures (#Entries)
Clashscore	158937	4297

The table below summarises the geometric issues observed across the polymeric chains and their fit to the map. The red, orange, yellow and green segments of the bar indicate the fraction of residues that contain outliers for ≥ 3 , 2, 1 and 0 types of geometric quality criteria respectively. A grey segment represents the fraction of residues that are not modelled. The numeric value for each fraction is indicated below the corresponding segment, with a dot representing fractions $\leq 5\%$. The upper red bar (where present) indicates the fraction of residues that have poor fit to the EM map (all-atom inclusion $< 40\%$). The numeric value is given above the bar.

Mol	Chain	Length	Quality of chain	
1	A	1333		31%
1	B	1333		31%
2	T	1057		66%

2 Entry composition

There are 2 unique types of molecules in this entry. The entry contains 2199 atoms, of which 0 are hydrogens and 0 are deuteriums.

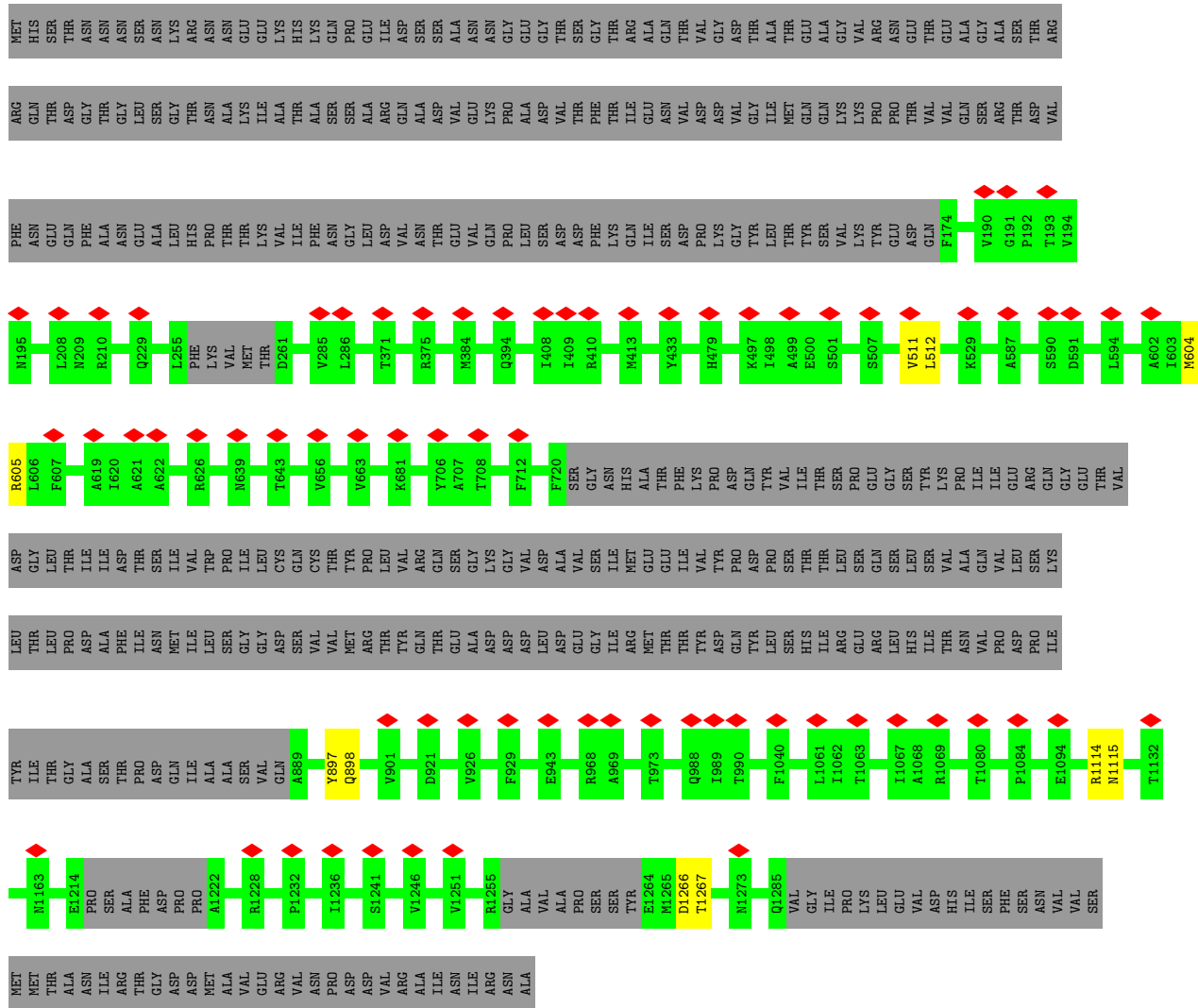
In the tables below, the AltConf column contains the number of residues with at least one atom in alternate conformation and the Trace column contains the number of residues modelled with at most 2 atoms.

- Molecule 1 is a protein called VP1.

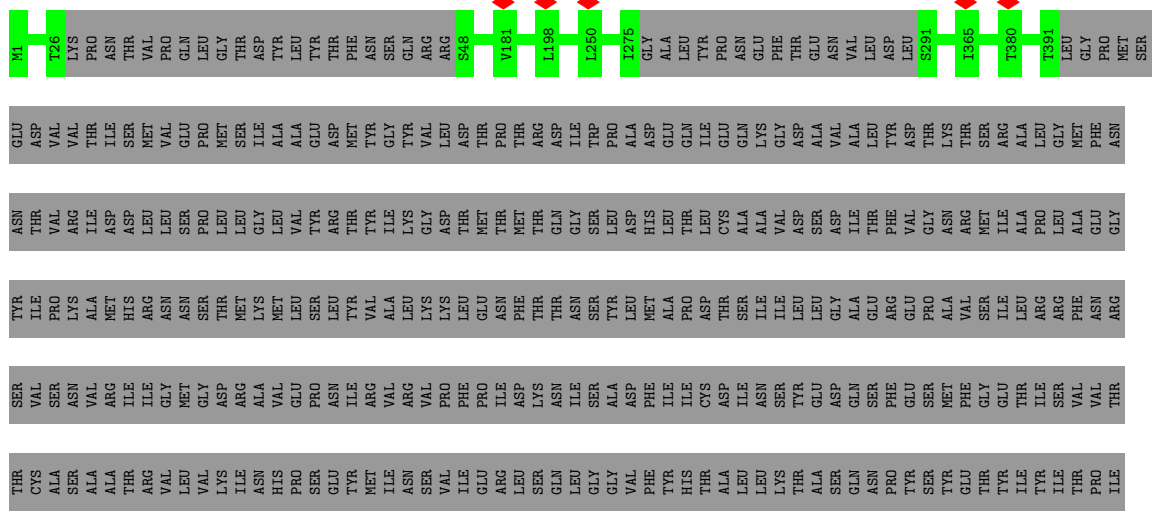
Mol	Chain	Residues	Atoms		AltConf	Trace
1	A	920	Total	C	0	920
			920	920		
1	B	924	Total	C	0	924
			924	924		

- Molecule 2 is a protein called VP3.

Mol	Chain	Residues	Atoms		AltConf	Trace
2	T	355	Total	C	0	355
			355	355		



• Molecule 2: VP3



ALA
ALA
LEU
SER
GLN
VAL
ARG
ASP
LYS
LEU
SER
PHE
PRO
PHE
TYR
CYS
SER
GLU
ASN
SER
ALA
ILE
ILE
TRP
GLN
ASN
VAL
ARG
TYR
MET
SER
THR
ALA
ASP
ASN
LEU
ALA
VAL
ASP
ASN
GLU
THR
ILE
ILE
ALA
PRO
ARG
HIS
ILE
THR
SER
ILE
LYS
LEU
GLY

ALA
LEU
SER
GLN
VAL
ARG
ASP
LYS
LEU
SER
PHE
PRO
PHE
TYR
CYS
SER
GLU
ASN
SER
ALA
ILE
ILE
TRP
GLN
ASN
VAL
ARG
TYR
MET
SER
THR
ALA
ASP
ASN
LEU
ALA
VAL
ASP
ASN
GLU
THR
ILE
ILE
ALA
PRO
ARG
HIS
ILE
THR
SER
ILE
LYS
LEU
GLY

PHE
LYS
GLY
ARG
LYS
THR
ARG
GLU
PHE
ARG
TYR
SER
ILE
HIS
ARG
GLN
VAL
THR
PHE
LYS
ASN
ILE
HIS
LYS
LEU
VAL
MET
THR
TYR
ALA
ILE
SER
MET
LEU
GLN
ASN
THR
PHE
VAL
SER
GLY
LEU
ASP
ALA
MET
LYS

TYR
VAL
VAL
MET
ILE
ASP
LYS
ARG
ILE
ASN
THR
ALA
ILE
SER
ARG
VAL
ILE
THR
ALA
THR
LEU
MET
THR
GLN
VAL
ARG
GLU
LYS
THR
ASN
CYS
ILE
VAL
ILE
GLU
VAL
TYR
ILE
SER
PHE
ASP
GLY
LEU
GLN
SER
ASN
THR
PHE
ARG
PRO
PHE
THR
GLU
LEU
ALA
SER
MET
LEU
GLN
ASN
THR
PHE
VAL
SER
GLY
LEU
ASP
ALA
MET
ARG

THR
GLN
MET
ASP
LYS
ARG
ILE
ASN
THR
VAL
MET
LEU
THR
THR
ARG
THR
ASN
VAL
VAL
VAL
THR
GLU
SER
THR
PHE
TYR
GLU
GLY
ALA
SER
THR
ARG
LEU
ASP
GLY
SER
HIS
THR
LYS
ILE
ARG
VAL
GLU
GLY
THR
PHE
ARG
LEU
LYS
VAL
ALA
SER
ALA
ASN
GLY
TYR
VAL
THR
VAL
PRO
THR
VAL
ASP
ALA
THR

LEU
VAL
GLU
ALA
ASP
VAL
THR
LEU
MET
LEU
ARG
ASP
ILE
GLY
ILE
THR
HIS
GLU
ILE
ILE
ARG
PRO
SER
THR
PRO
GLU
LEU
ILE
ASN
ALA
SER
CYS
SER
ASN
TYR
GLY
ILE
ILE
ARG
LEU
GLY
THR
GLY
GLY
ALA
VAL
LEU
ASP
VAL
PHE
ASN
HIS
TYR
SER
PRO
VAL
ILE
LYS
LEU
VAL
ARG

SER

4 Experimental information

Property	Value	Source
EM reconstruction method	SINGLE PARTICLE	Depositor
Imposed symmetry	POINT, I	Depositor
Number of particles used	12814	Depositor
Resolution determination method	Not provided	
CTF correction method	CTF CORRECTION OF EACH PARTICLE	Depositor
Microscope	FEI POLARA 300	Depositor
Voltage (kV)	300	Depositor
Electron dose ($e^-/\text{\AA}^2$)	20	Depositor
Minimum defocus (nm)	150.00	Depositor
Maximum defocus (nm)	1300.00	Depositor
Magnification	154380	Depositor
Image detector	GENERIC TVIPS	Depositor
Maximum map value	8.028	Depositor
Minimum map value	0.000	Depositor
Average map value	0.090	Depositor
Map value standard deviation	0.387	Depositor
Recommended contour level	0.644	Depositor
Map size (\AA)	747.87, 747.87, 747.87	wwPDB
Map dimensions	771, 771, 771	wwPDB
Map angles ($^\circ$)	90, 90, 90	wwPDB
Pixel spacing (\AA)	0.97, 0.97, 0.97	Depositor

5 Model quality i

5.1 Standard geometry i

The Z score for a bond length (or angle) is the number of standard deviations the observed value is removed from the expected value. A bond length (or angle) with $|Z| > 5$ is considered an outlier worth inspection. RMSZ is the root-mean-square of all Z scores of the bond lengths (or angles).

There are no protein, RNA or DNA chains available to summarize Z scores of covalent bonds and angles.

There are no bond length outliers.

There are no bond angle outliers.

There are no chirality outliers.

There are no planarity outliers.

5.2 Too-close contacts i

In the following table, the Non-H and H(model) columns list the number of non-hydrogen atoms and hydrogen atoms in the chain respectively. The H(added) column lists the number of hydrogen atoms added and optimized by MolProbity. The Clashes column lists the number of clashes within the asymmetric unit, whereas Symm-Clashes lists symmetry-related clashes.

Mol	Chain	Non-H	H(model)	H(added)	Clashes	Symm-Clashes
1	A	920	0	0	2	0
1	B	924	0	0	5	0
2	T	355	0	0	0	0
All	All	2199	0	0	7	0

The all-atom clashscore is defined as the number of clashes found per 1000 atoms (including hydrogen atoms). The all-atom clashscore for this structure is 3.

All (7) close contacts within the same asymmetric unit are listed below, sorted by their clash magnitude.

Atom-1	Atom-2	Interatomic distance (Å)	Clash overlap (Å)
1:A:568:PHE:CA	1:A:713:MET:CA	2.64	0.76
1:B:511:VAL:CA	1:B:512:LEU:CA	2.72	0.67
1:B:897:TYR:CA	1:B:898:GLN:CA	2.84	0.55
1:B:604:MET:CA	1:B:605:ARG:CA	2.89	0.51
1:B:1266:ASP:CA	1:B:1267:THR:CA	2.89	0.51
1:A:1275:ASP:CA	1:A:1276:LEU:CA	2.96	0.43

Continued on next page...

Continued from previous page...

Atom-1	Atom-2	Interatomic distance (Å)	Clash overlap (Å)
1:B:1114:ARG:CA	1:B:1115:ASN:CA	2.97	0.43

There are no symmetry-related clashes.

5.3 Torsion angles [i](#)

5.3.1 Protein backbone [i](#)

There are no protein backbone outliers to report in this entry.

5.3.2 Protein sidechains [i](#)

There are no protein residues with a non-rotameric sidechain to report in this entry.

5.3.3 RNA [i](#)

There are no RNA molecules in this entry.

5.4 Non-standard residues in protein, DNA, RNA chains [i](#)

There are no non-standard protein/DNA/RNA residues in this entry.

5.5 Carbohydrates [i](#)

There are no monosaccharides in this entry.

5.6 Ligand geometry [i](#)

There are no ligands in this entry.

5.7 Other polymers [i](#)

There are no such residues in this entry.

5.8 Polymer linkage issues

There are no chain breaks in this entry.

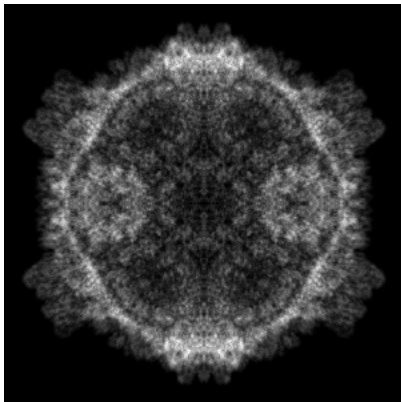
6 Map visualisation [i](#)

This section contains visualisations of the EMDB entry EMD-1508. These allow visual inspection of the internal detail of the map and identification of artifacts.

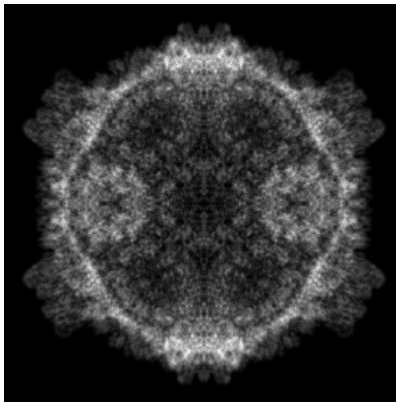
No raw map or half-maps were deposited for this entry and therefore no images, graphs, etc. pertaining to the raw map can be shown.

6.1 Orthogonal projections [i](#)

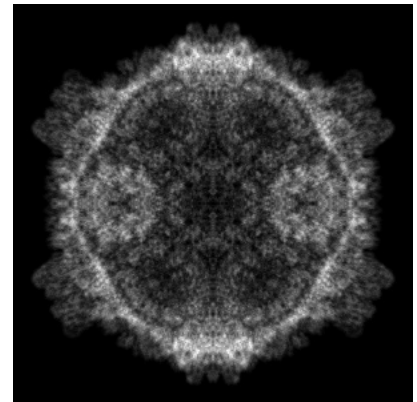
6.1.1 Primary map



X



Y



Z

The images above show the map projected in three orthogonal directions.

6.2 Central slices [i](#)

6.2.1 Primary map



X Index: 385



Y Index: 385



Z Index: 385

The images above show central slices of the map in three orthogonal directions.

6.3 Largest variance slices [i](#)

6.3.1 Primary map



X Index: 353



Y Index: 353

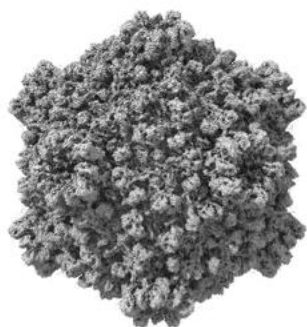


Z Index: 417

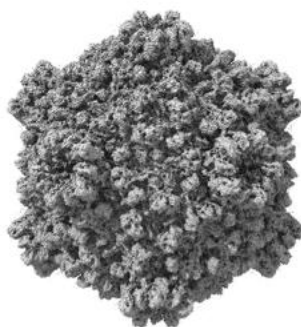
The images above show the largest variance slices of the map in three orthogonal directions.

6.4 Orthogonal surface views [i](#)

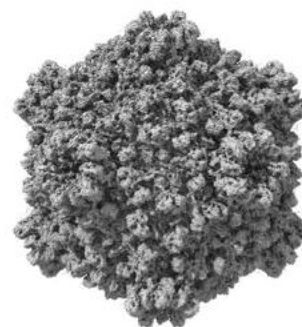
6.4.1 Primary map



X



Y



Z

The images above show the 3D surface view of the map at the recommended contour level 0.644. These images, in conjunction with the slice images, may facilitate assessment of whether an appropriate contour level has been provided.

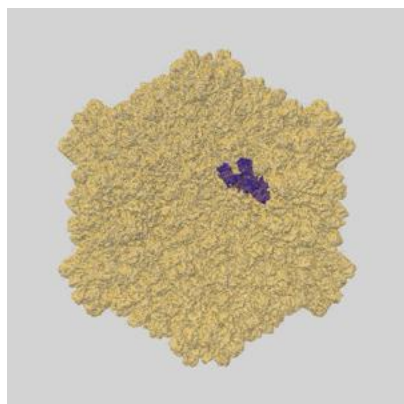
6.5 Mask visualisation [i](#)

This section shows the 3D surface view of the primary map at 50% transparency overlaid with the specified mask at 0% transparency

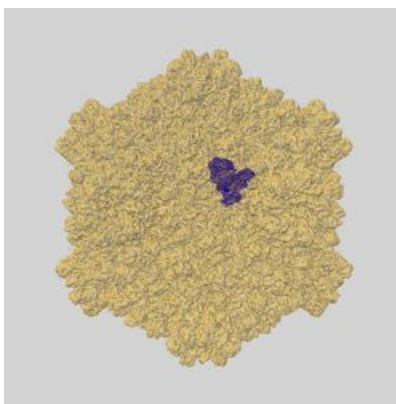
A mask typically either:

- Encompasses the whole structure
- Separates out a domain, a functional unit, a monomer or an area of interest from a larger structure

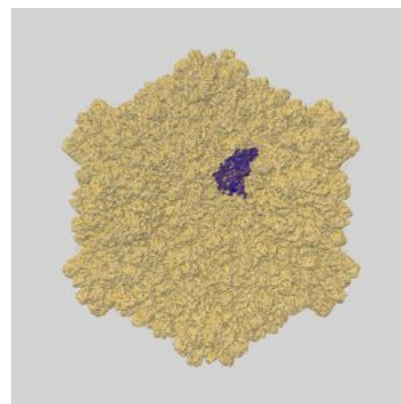
6.5.1 emd_1508_msk.map [i](#)



X



Y

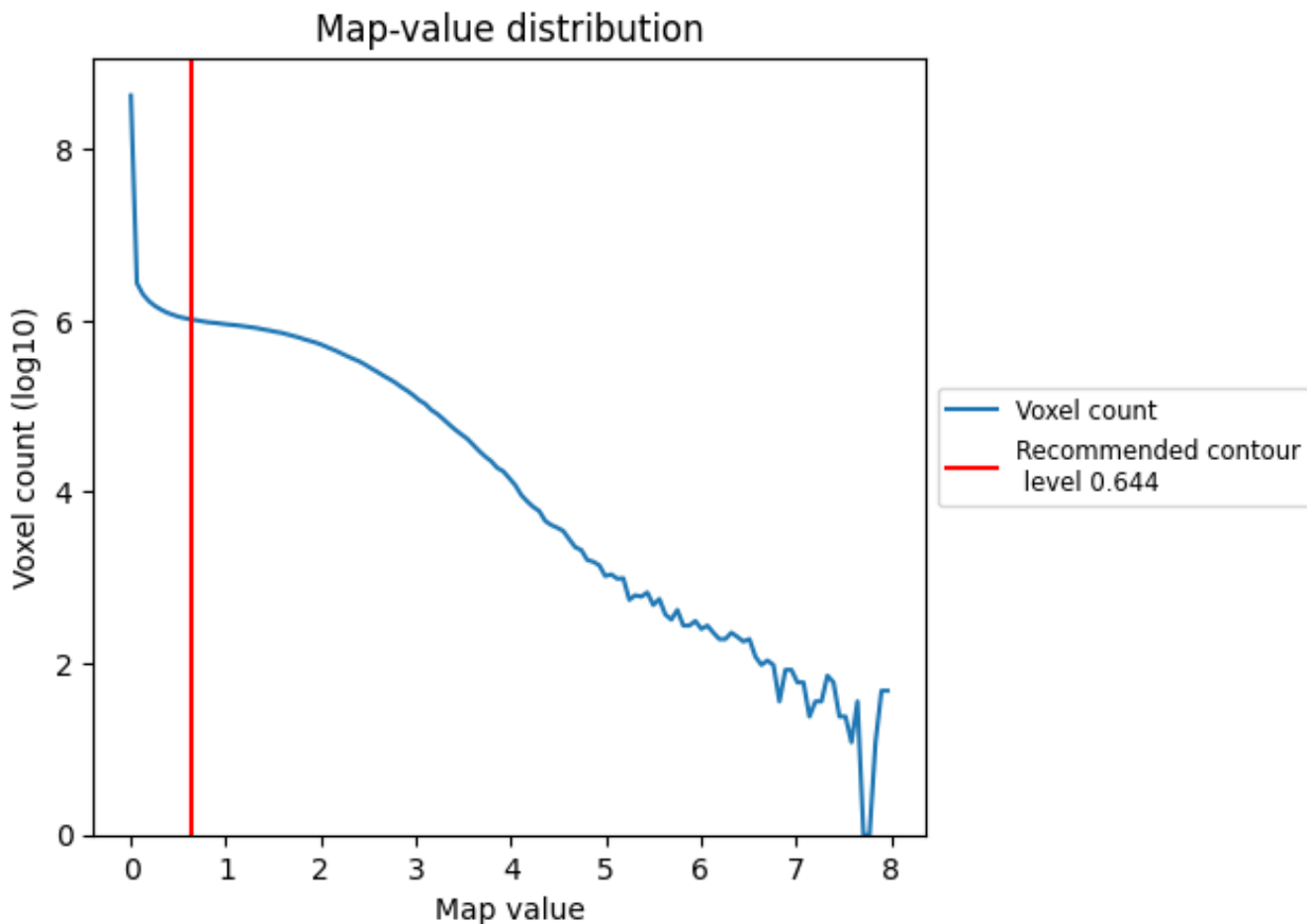


Z

7 Map analysis [i](#)

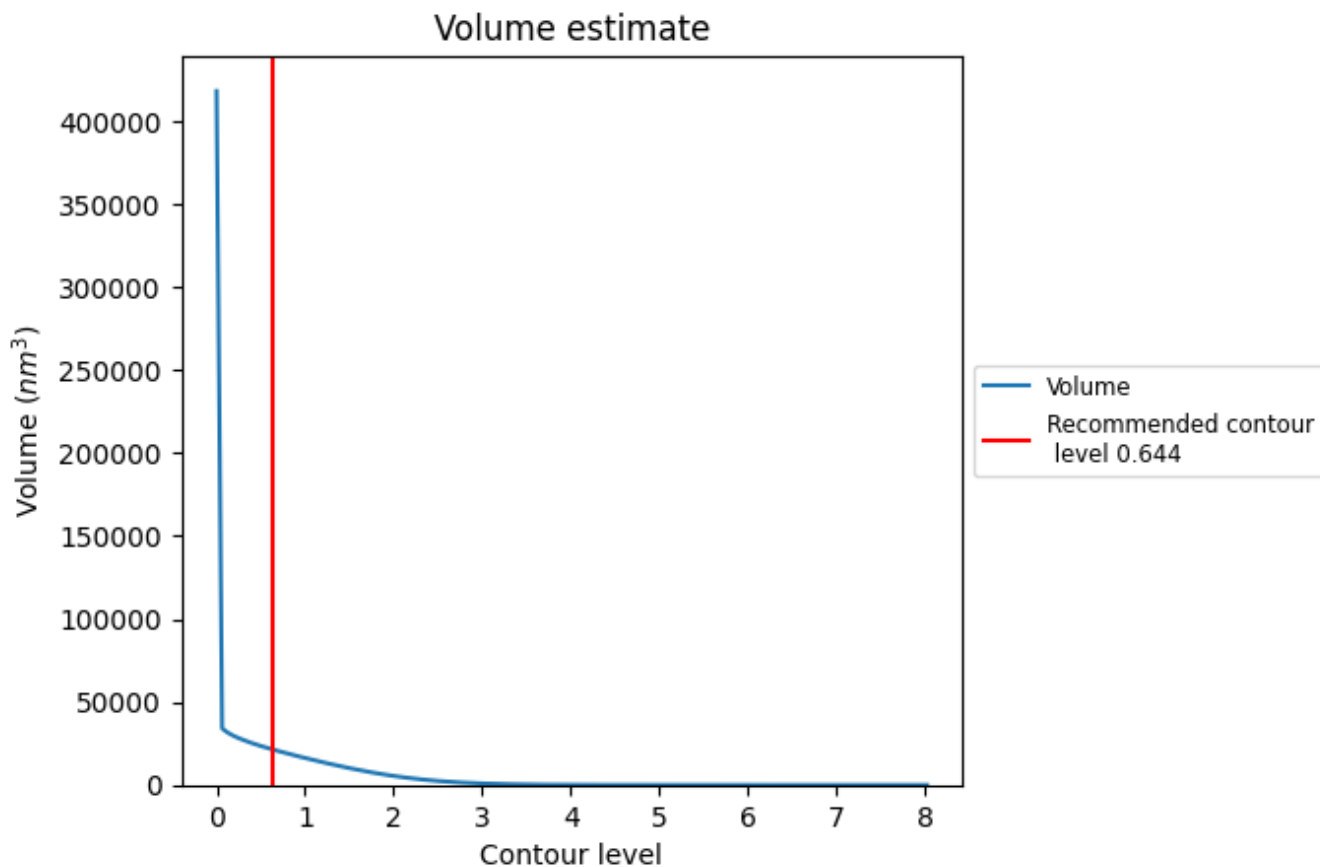
This section contains the results of statistical analysis of the map.

7.1 Map-value distribution [i](#)



The map-value distribution is plotted in 128 intervals along the x-axis. The y-axis is logarithmic. A spike in this graph at zero usually indicates that the volume has been masked.

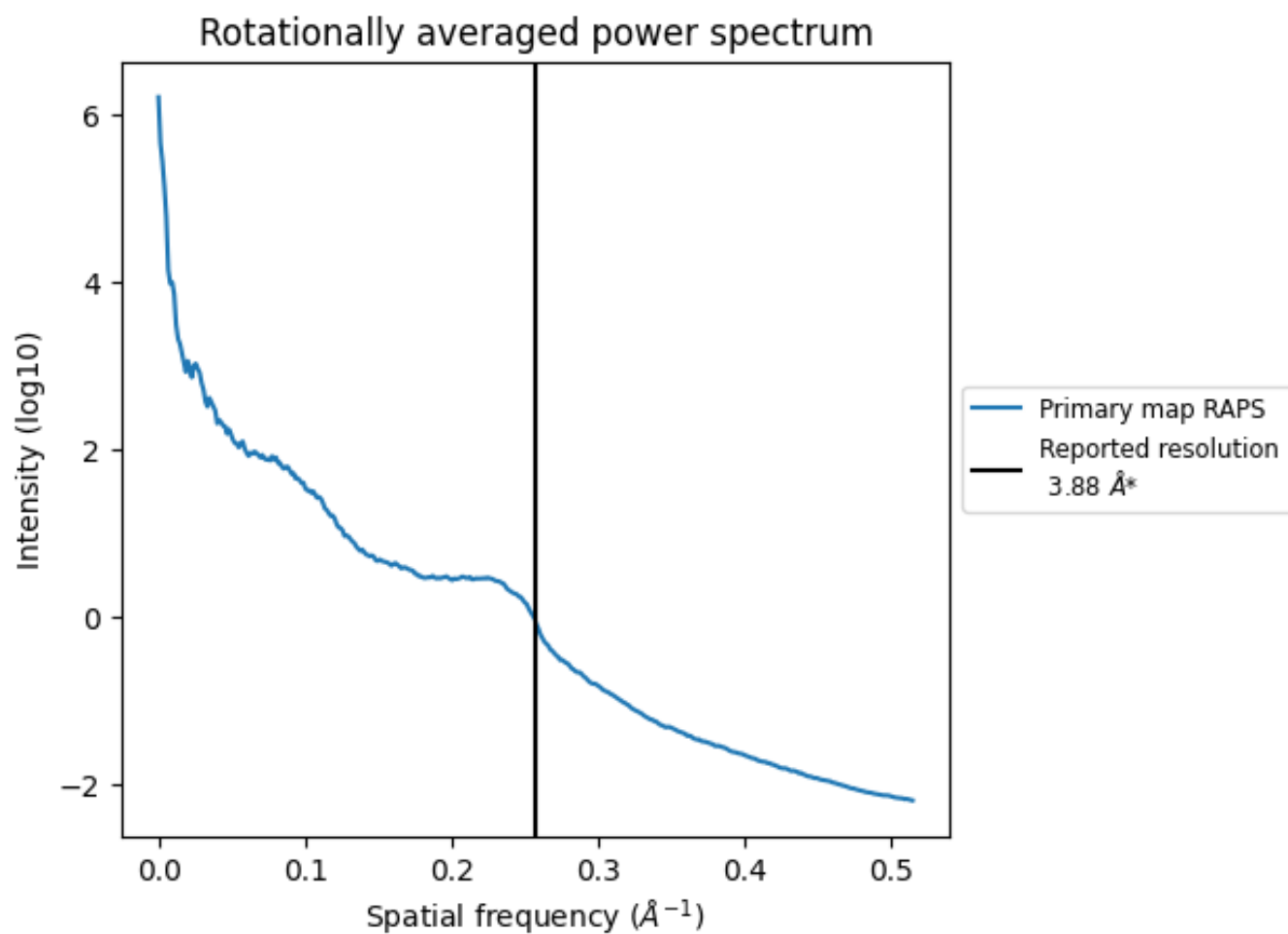
7.2 Volume estimate [i](#)



The volume at the recommended contour level is 21237 nm^3 ; this corresponds to an approximate mass of 19184 kDa.

The volume estimate graph shows how the enclosed volume varies with the contour level. The recommended contour level is shown as a vertical line and the intersection between the line and the curve gives the volume of the enclosed surface at the given level.

7.3 Rotationally averaged power spectrum [i](#)



*Reported resolution corresponds to spatial frequency of 0.258 Å⁻¹

8 Fourier-Shell correlation

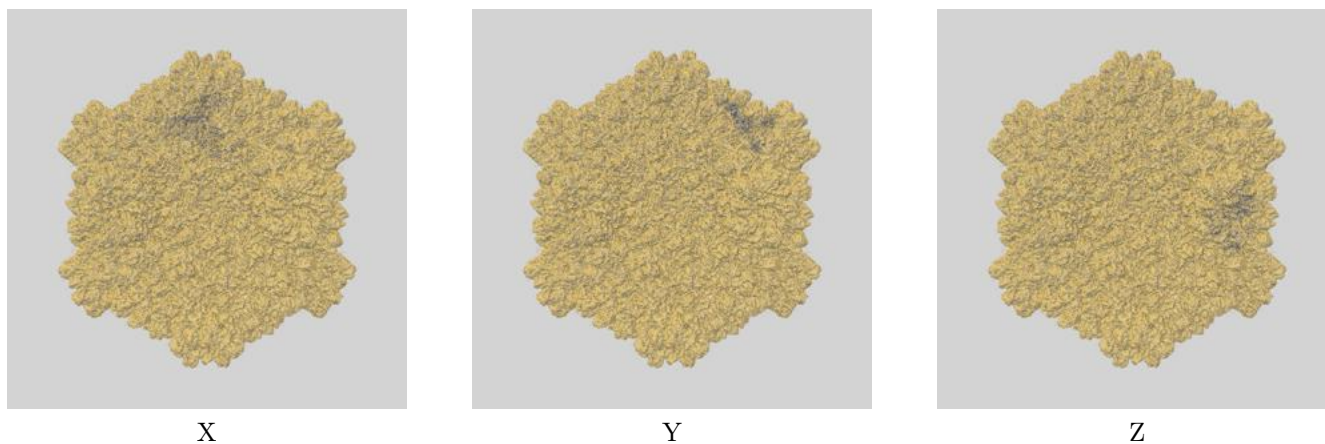
This section was not generated. No FSC curve or half-maps provided.

9 Map-model fit [i](#)

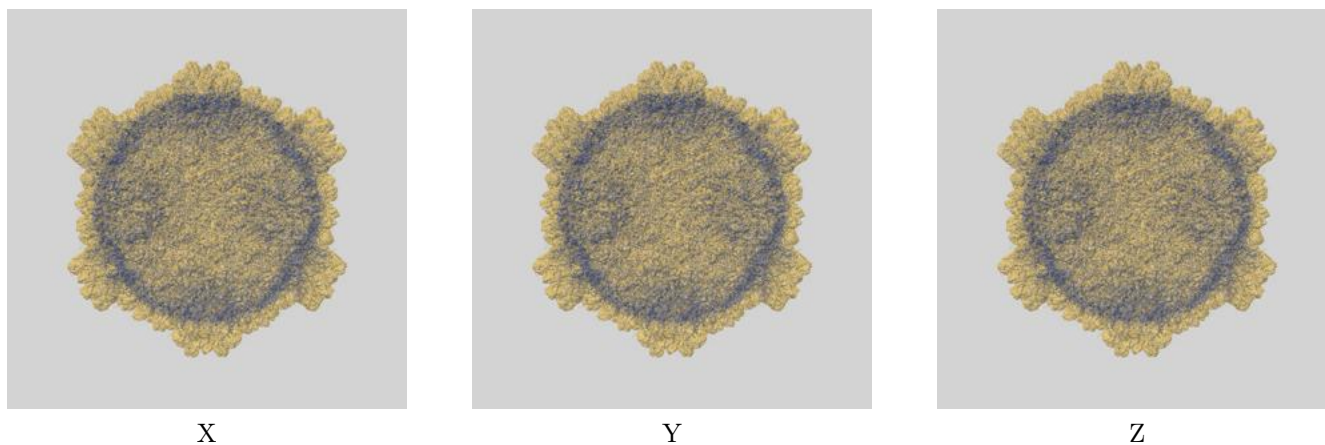
This section contains information regarding the fit between EMDB map EMD-1508 and PDB model 3CNF. Per-residue inclusion information can be found in section 3 on page 4.

9.1 Map-model overlays

9.1.1 Map-model overlay [i](#)

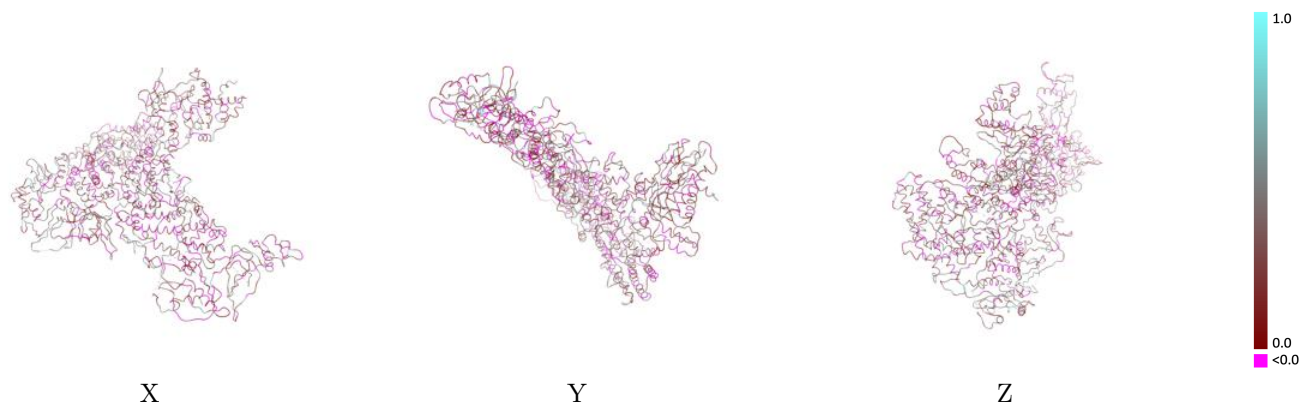


9.1.2 Map-model assembly overlay [i](#)



The images above show the 3D surface view of the map at the recommended contour level 0.644 at 50% transparency in yellow overlaid with a ribbon representation of the model coloured in blue. These images allow for the visual assessment of the quality of fit between the atomic model and the map.

9.2 Q-score mapped to coordinate model [i](#)



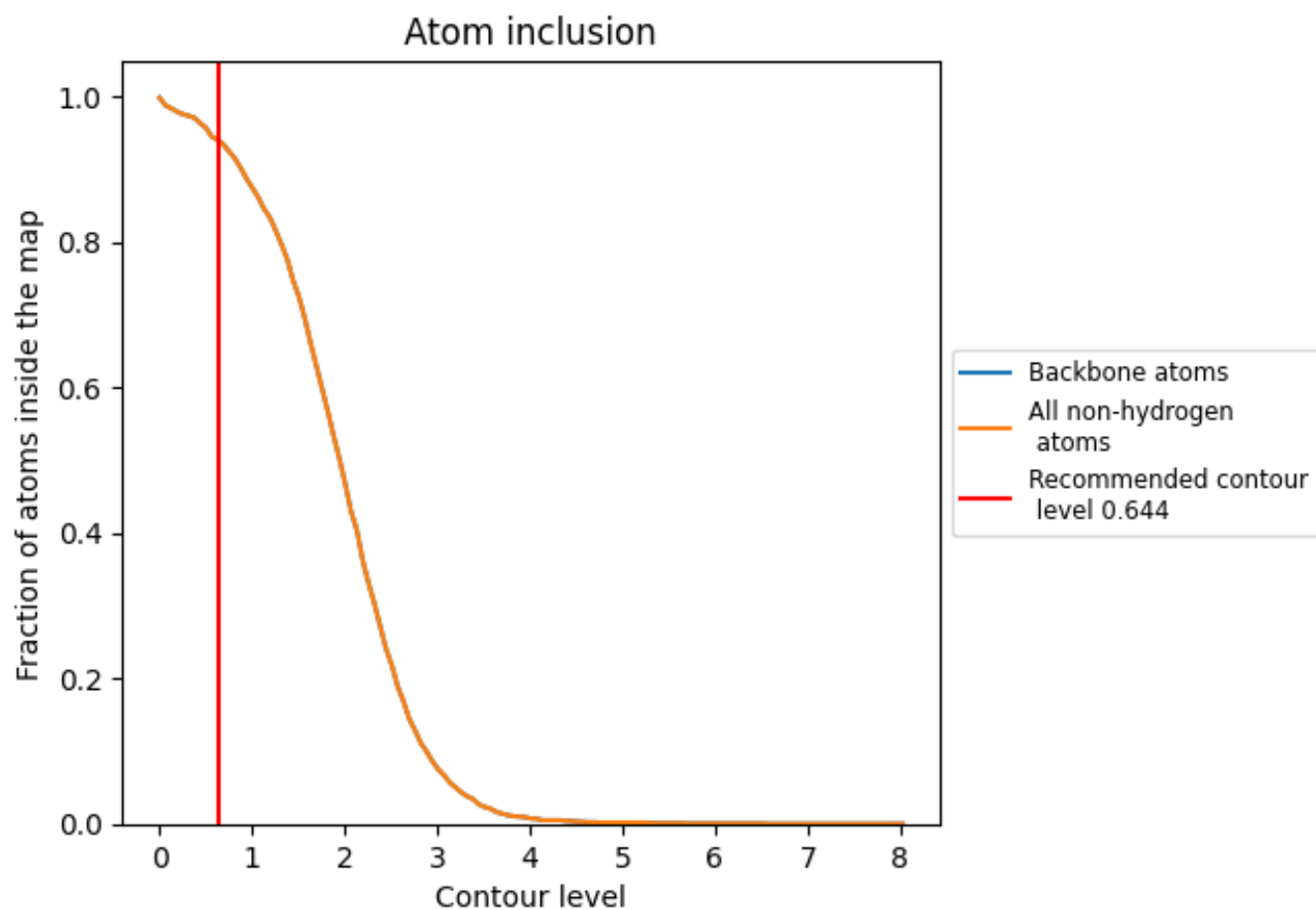
The images above show the model with each residue coloured according its Q-score. This shows their resolvability in the map with higher Q-score values reflecting better resolvability. Please note: Q-score is calculating the resolvability of atoms, and thus high values are only expected at resolutions at which atoms can be resolved. Low Q-score values may therefore be expected for many entries.

9.3 Atom inclusion mapped to coordinate model [i](#)



The images above show the model with each residue coloured according to its atom inclusion. This shows to what extent they are inside the map at the recommended contour level (0.644).









9.4 Atom inclusion [i](#)



At the recommended contour level, 94% of all backbone atoms, 94% of all non-hydrogen atoms, are inside the map.

9.5 Map-model fit summary

The table lists the average atom inclusion at the recommended contour level (0.644) and Q-score for the entire model and for each chain.

Chain	Atom inclusion	Q-score
All	 0.9391	 0.2280
A	 0.9370	 0.2460
B	 0.9232	 0.2080
T	 0.9859	 0.2340

