



# Full wwPDB X-ray Structure Validation Report ⓘ

Nov 7, 2023 – 12:34 PM EST

PDB ID : 3CNT  
Title : Crystal structure of fms1 in complex with R-Bz-MeSpermidine  
Authors : Huang, Q.; Hao, Q.  
Deposited on : 2008-03-26  
Resolution : 2.70 Å(reported)

This is a Full wwPDB X-ray Structure Validation Report for a publicly released PDB entry.

We welcome your comments at [validation@mail.wwpdb.org](mailto:validation@mail.wwpdb.org)

A user guide is available at

<https://www.wwpdb.org/validation/2017/XrayValidationReportHelp>

with specific help available everywhere you see the ⓘ symbol.

The types of validation reports are described at

<http://www.wwpdb.org/validation/2017/FAQs#types>.

---

The following versions of software and data (see [references ⓘ](#)) were used in the production of this report:

MolProbity : 4.02b-467  
Mogul : 1.8.5 (274361), CSD as541be (2020)  
Xtriage (Phenix) : 1.13  
EDS : 2.36  
buster-report : 1.1.7 (2018)  
Percentile statistics : 20191225.v01 (using entries in the PDB archive December 25th 2019)  
Refmac : 5.8.0158  
CCP4 : 7.0.044 (Gargrove)  
Ideal geometry (proteins) : Engh & Huber (2001)  
Ideal geometry (DNA, RNA) : Parkinson et al. (1996)  
Validation Pipeline (wwPDB-VP) : 2.36

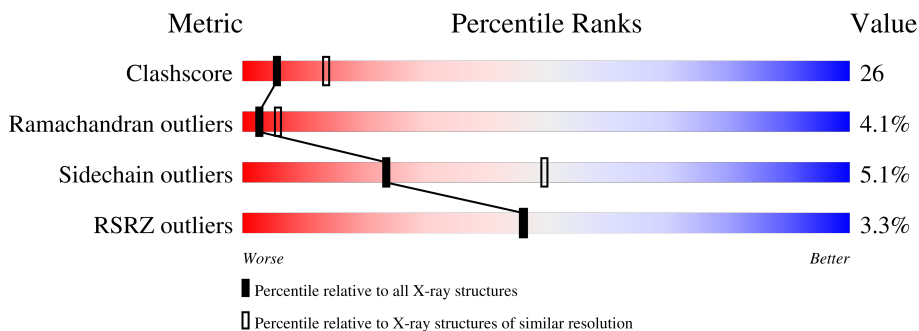
# 1 Overall quality at a glance

The following experimental techniques were used to determine the structure:

*X-RAY DIFFRACTION*

The reported resolution of this entry is 2.70 Å.

Percentile scores (ranging between 0-100) for global validation metrics of the entry are shown in the following graphic. The table shows the number of entries on which the scores are based.



Metric	Whole archive (#Entries)	Similar resolution (#Entries, resolution range(Å))
Clashscore	141614	3122 (2.70-2.70)
Ramachandran outliers	138981	3069 (2.70-2.70)
Sidechain outliers	138945	3069 (2.70-2.70)
RSRZ outliers	127900	2737 (2.70-2.70)

The table below summarises the geometric issues observed across the polymeric chains and their fit to the electron density. The red, orange, yellow and green segments of the lower bar indicate the fraction of residues that contain outliers for  $\geq 3$ , 2, 1 and 0 types of geometric quality criteria respectively. A grey segment represents the fraction of residues that are not modelled. The numeric value for each fraction is indicated below the corresponding segment, with a dot representing fractions  $\leq 5\%$ . The upper red bar (where present) indicates the fraction of residues that have poor fit to the electron density. The numeric value is given above the bar.

Mol	Chain	Length	Quality of chain
1	A	516	 2% 56% 35% 5%
1	B	516	 4% 53% 40%

The following table lists non-polymeric compounds, carbohydrate monomers and non-standard residues in protein, DNA, RNA chains that are outliers for geometric or electron-density-fit criteria:

Mol	Type	Chain	Res	Chirality	Geometry	Clashes	Electron density
3	SP9	B	518	-	-	X	-

## 2 Entry composition

There are 4 unique types of molecules in this entry. The entry contains 7899 atoms, of which 0 are hydrogens and 0 are deuteriums.

In the tables below, the ZeroOcc column contains the number of atoms modelled with zero occupancy, the AltConf column contains the number of residues with at least one atom in alternate conformation and the Trace column contains the number of residues modelled with at most 2 atoms.

- Molecule 1 is a protein called fms1.

Mol	Chain	Residues	Atoms					ZeroOcc	AltConf	Trace
			Total	C	N	O	S			
1	B	495	3816	2407	664	723	22	0	0	0
1	A	497	3907	2471	683	731	22	0	0	0

There are 16 discrepancies between the modelled and reference sequences:

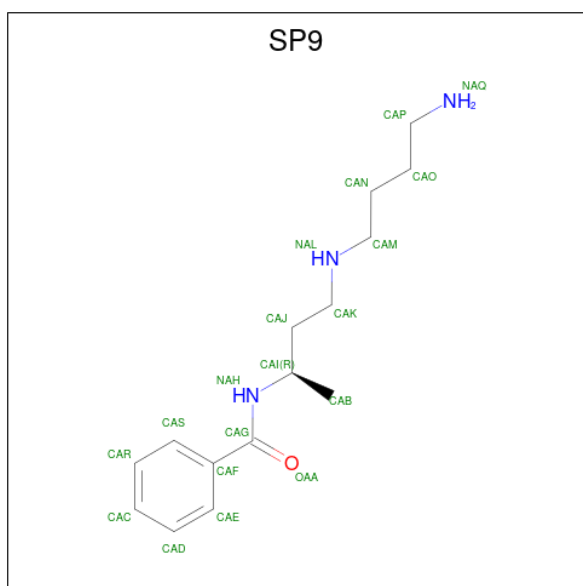
Chain	Residue	Modelled	Actual	Comment	Reference
B	509	LEU	-	expression tag	UNP P50264
B	510	GLU	-	expression tag	UNP P50264
B	511	HIS	-	expression tag	UNP P50264
B	512	HIS	-	expression tag	UNP P50264
B	513	HIS	-	expression tag	UNP P50264
B	514	HIS	-	expression tag	UNP P50264
B	515	HIS	-	expression tag	UNP P50264
B	516	HIS	-	expression tag	UNP P50264
A	509	LEU	-	expression tag	UNP P50264
A	510	GLU	-	expression tag	UNP P50264
A	511	HIS	-	expression tag	UNP P50264
A	512	HIS	-	expression tag	UNP P50264
A	513	HIS	-	expression tag	UNP P50264
A	514	HIS	-	expression tag	UNP P50264
A	515	HIS	-	expression tag	UNP P50264
A	516	HIS	-	expression tag	UNP P50264

- Molecule 2 is FLAVIN-ADENINE DINUCLEOTIDE (three-letter code: FAD) (formula:  $C_{27}H_{33}N_9O_{15}P_2$ ).



Mol	Chain	Residues	Atoms				ZeroOcc	AltConf	
			Total	C	N	O			P
2	B	1	53	27	9	15	2	0	0
2	A	1	53	27	9	15	2	0	0

- Molecule 3 is N-{(1R)-3-[(4-aminobutyl)amino]-1-methylpropyl}benzamide (three-letter code: SP9) (formula: C<sub>15</sub>H<sub>25</sub>N<sub>3</sub>O).



Mol	Chain	Residues	Atoms				ZeroOcc	AltConf
			Total	C	N	O		
3	B	1	19	15	3	1	0	0

- Molecule 4 is water.

<b>Mol</b>	<b>Chain</b>	<b>Residues</b>	<b>Atoms</b>		<b>ZeroOcc</b>	<b>AltConf</b>
4	B	21	Total 21	O 21	0	0
4	A	30	Total 30	O 30	0	0

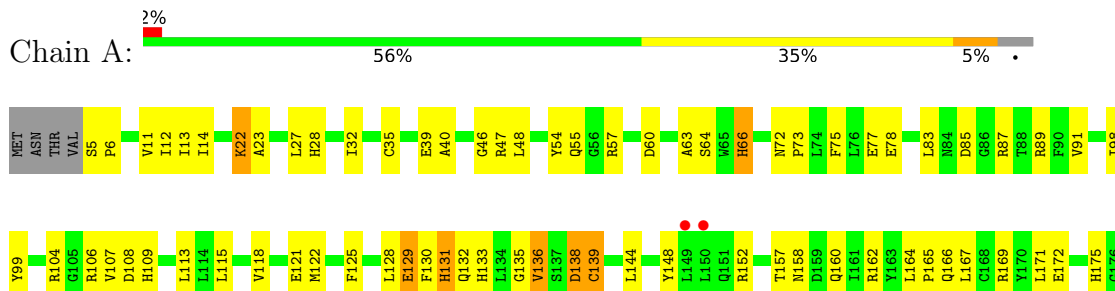
### 3 Residue-property plots

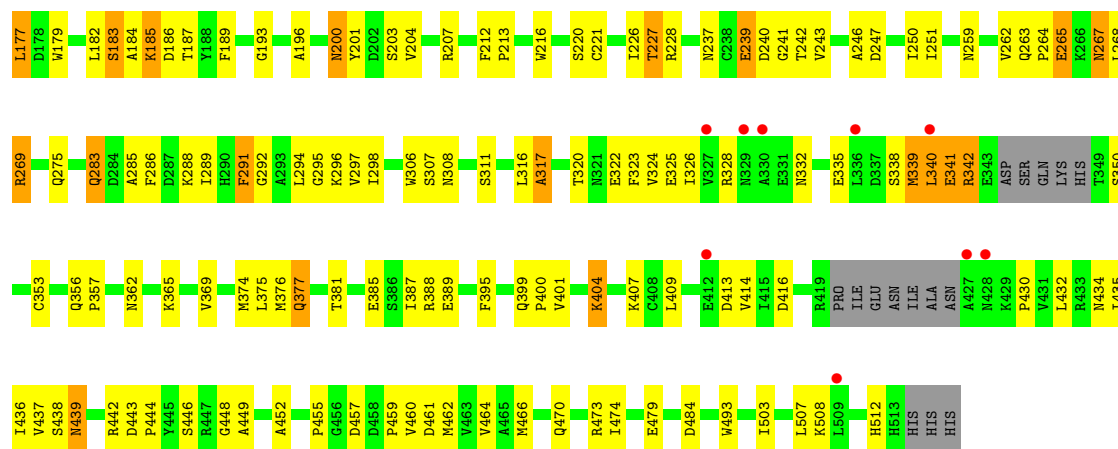
These plots are drawn for all protein, RNA, DNA and oligosaccharide chains in the entry. The first graphic for a chain summarises the proportions of the various outlier classes displayed in the second graphic. The second graphic shows the sequence view annotated by issues in geometry and electron density. Residues are color-coded according to the number of geometric quality criteria for which they contain at least one outlier: green = 0, yellow = 1, orange = 2 and red = 3 or more. A red dot above a residue indicates a poor fit to the electron density ( $RSRZ > 2$ ). Stretches of 2 or more consecutive residues without any outlier are shown as a green connector. Residues present in the sample, but not in the model, are shown in grey.

- Molecule 1: fms1



- Molecule 1: fms1





## 4 Data and refinement statistics

Property	Value	Source
Space group	C 1 2 1	Depositor
Cell constants a, b, c, $\alpha$ , $\beta$ , $\gamma$	161.86Å 102.41Å 77.20Å 90.00° 94.94° 90.00°	Depositor
Resolution (Å)	50.00 – 2.70 47.59 – 2.50	Depositor EDS
% Data completeness (in resolution range)	91.6 (50.00-2.70) 83.8 (47.59-2.50)	Depositor EDS
$R_{merge}$	0.07	Depositor
$R_{sym}$	0.09	Depositor
$\langle I/\sigma(I) \rangle$ <sup>1</sup>	0.97 (at 2.51Å)	Xtrriage
Refinement program	CNS	Depositor
R, $R_{free}$	0.223 , 0.290 0.226 , (Not available)	Depositor DCC
$R_{free}$ test set	No test flags present.	wwPDB-VP
Wilson B-factor (Å <sup>2</sup> )	43.7	Xtrriage
Anisotropy	0.049	Xtrriage
Bulk solvent $k_{sol}$ (e/Å <sup>3</sup> ), $B_{sol}$ (Å <sup>2</sup> )	0.32 , 43.5	EDS
L-test for twinning <sup>2</sup>	$\langle  L  \rangle = 0.50$ , $\langle L^2 \rangle = 0.33$	Xtrriage
Estimated twinning fraction	No twinning to report.	Xtrriage
$F_o, F_c$ correlation	0.92	EDS
Total number of atoms	7899	wwPDB-VP
Average B, all atoms (Å <sup>2</sup> )	58.0	wwPDB-VP

Xtrriage's analysis on translational NCS is as follows: *The largest off-origin peak in the Patterson function is 4.23% of the height of the origin peak. No significant pseudotranslation is detected.*

<sup>1</sup>Intensities estimated from amplitudes.

<sup>2</sup>Theoretical values of  $\langle |L| \rangle$ ,  $\langle L^2 \rangle$  for acentric reflections are 0.5, 0.333 respectively for untwinned datasets, and 0.375, 0.2 for perfectly twinned datasets.



## 5 Model quality [i](#)

### 5.1 Standard geometry [i](#)

Bond lengths and bond angles in the following residue types are not validated in this section: FAD, SP9

The Z score for a bond length (or angle) is the number of standard deviations the observed value is removed from the expected value. A bond length (or angle) with  $|Z| > 5$  is considered an outlier worth inspection. RMSZ is the root-mean-square of all Z scores of the bond lengths (or angles).

Mol	Chain	Bond lengths		Bond angles	
		RMSZ	# Z  >5	RMSZ	# Z  >5
1	A	0.41	0/3989	0.65	1/5396 (0.0%)
1	B	0.39	0/3893	0.63	0/5267
All	All	0.40	0/7882	0.64	1/10663 (0.0%)

There are no bond length outliers.

All (1) bond angle outliers are listed below:

Mol	Chain	Res	Type	Atoms	Z	Observed(°)	Ideal(°)
1	A	66	HIS	N-CA-C	-5.17	97.05	111.00

There are no chirality outliers.

There are no planarity outliers.

### 5.2 Too-close contacts [i](#)

In the following table, the Non-H and H(model) columns list the number of non-hydrogen atoms and hydrogen atoms in the chain respectively. The H(added) column lists the number of hydrogen atoms added and optimized by MolProbity. The Clashes column lists the number of clashes within the asymmetric unit, whereas Symm-Clashes lists symmetry-related clashes.

Mol	Chain	Non-H	H(model)	H(added)	Clashes	Symm-Clashes
1	A	3907	0	3773	180	2
1	B	3816	0	3610	213	0
2	A	53	0	31	7	0
2	B	53	0	31	12	0
3	B	19	0	25	19	0
4	A	30	0	0	1	0
4	B	21	0	0	1	0
All	All	7899	0	7470	392	2

The all-atom clashscore is defined as the number of clashes found per 1000 atoms (including hydrogen atoms). The all-atom clashscore for this structure is 26.

All (392) close contacts within the same asymmetric unit are listed below, sorted by their clash magnitude.

Atom-1	Atom-2	Interatomic distance (Å)	Clash overlap (Å)
1:B:278:LEU:HA	1:B:470:GLN:HE22	1.08	1.11
1:B:66:HIS:HB2	1:B:196:ALA:HB3	1.43	1.01
1:B:488:CYS:SG	3:B:518:SP9:HAN	2.03	0.98
1:B:359:PHE:CE2	3:B:518:SP9:HAR	1.99	0.96
1:B:177:LEU:HD11	1:B:292:GLY:HA2	1.48	0.96
1:B:353:CYS:SG	1:B:400:PRO:HG2	2.10	0.92
1:B:67:HIS:CD2	3:B:518:SP9:HABA	2.06	0.90
1:A:171:LEU:HD13	1:A:187:THR:HG22	1.54	0.90
1:A:377:GLN:H	1:A:377:GLN:NE2	1.70	0.89
1:A:377:GLN:HE21	1:A:377:GLN:N	1.69	0.89
1:B:81:LEU:HD11	1:B:207:ARG:NH1	1.88	0.88
1:B:50:THR:HG21	1:B:58:LYS:HE2	1.55	0.88
1:A:377:GLN:H	1:A:377:GLN:HE21	0.91	0.88
1:B:278:LEU:HA	1:B:470:GLN:NE2	1.89	0.86
1:A:54:TYR:HE2	1:A:55:GLN:HE21	1.24	0.85
1:B:237:ASN:ND2	1:B:243:VAL:HG22	1.93	0.83
1:B:237:ASN:OD1	1:B:243:VAL:HG13	1.79	0.83
1:B:60:ASP:HB3	1:B:63:ALA:O	1.81	0.81
1:B:486:ALA:O	3:B:518:SP9:HANA	1.80	0.81
1:B:72:ASN:C	1:B:72:ASN:HD22	1.84	0.81
1:B:359:PHE:HE2	3:B:518:SP9:HAR	1.42	0.81
1:B:192:GLN:HE21	1:A:128:LEU:HD21	1.46	0.80
1:A:353:CYS:SG	1:A:400:PRO:HG2	2.21	0.80
1:B:47:ARG:HH21	1:B:254:PRO:HB3	1.49	0.78
1:B:177:LEU:CD1	1:B:292:GLY:HA2	2.14	0.77
1:B:282:ILE:HD13	1:B:465:ALA:HB1	1.67	0.77
1:B:412:GLU:OE2	1:B:429:LYS:HG2	1.87	0.75
1:A:443:ASP:HB3	1:A:446:SER:HB3	1.67	0.75
1:B:302:GLU:HG2	1:B:433:ARG:HD3	1.67	0.75
1:B:271:ARG:O	1:B:271:ARG:HD3	1.86	0.75
1:B:377:GLN:H	1:B:377:GLN:NE2	1.85	0.74
1:A:263:GLN:HB3	1:A:264:PRO:HD2	1.70	0.74
1:B:466:MET:HB3	1:B:481:THR:HG22	1.68	0.73
1:A:85:ASP:CG	1:A:87:ARG:HG3	2.08	0.73
1:A:213:PRO:HB2	1:A:216:TRP:CD1	2.23	0.73
1:A:22:LYS:HG3	1:A:493:TRP:CD1	2.24	0.72
1:B:172:GLU:HG2	1:B:177:LEU:O	1.90	0.71

*Continued on next page...*

*Continued from previous page...*

Atom-1	Atom-2	Interatomic distance (Å)	Clash overlap (Å)
1:A:227:THR:HG23	1:A:275:GLN:HB2	1.72	0.71
1:B:67:HIS:NE2	3:B:518:SP9:HABA	2.05	0.70
1:B:72:ASN:ND2	1:B:75:PHE:H	1.88	0.70
1:B:139:CYS:SG	1:B:147:LYS:NZ	2.64	0.70
1:B:226:ILE:HA	1:B:236:VAL:HG12	1.73	0.69
1:A:239:GLU:HG3	1:A:240:ASP:N	2.05	0.69
1:B:415:ILE:HD13	1:B:426:ASN:OD1	1.91	0.69
1:B:271:ARG:NH2	1:B:273:GLU:HG3	2.07	0.69
1:B:192:GLN:NE2	1:A:128:LEU:HD21	2.08	0.69
1:A:177:LEU:HD21	1:A:452:ALA:HB1	1.74	0.69
1:B:336:LEU:O	1:B:340:LEU:HG	1.92	0.69
1:A:63:ALA:HA	2:A:517:FAD:N5	2.09	0.68
1:A:183:SER:HB2	1:A:455:PRO:HA	1.76	0.68
1:B:140:SER:N	1:B:143:GLN:OE1	2.26	0.68
1:B:278:LEU:CA	1:B:470:GLN:HE22	1.97	0.68
1:B:423:ASN:ND2	1:B:425:ALA:HB3	2.09	0.68
1:A:283:GLN:O	1:A:286:PHE:HB2	1.94	0.67
1:B:479:GLU:HB2	1:B:487:GLY:HA2	1.77	0.67
1:B:77:GLU:HG2	1:B:207:ARG:HH22	1.60	0.66
1:B:332:ASN:ND2	1:B:335:GLU:H	1.94	0.66
1:A:240:ASP:OD1	1:A:242:THR:HG23	1.95	0.66
1:A:144:LEU:HD22	1:A:184:ALA:HB1	1.77	0.66
1:B:271:ARG:HH21	1:B:273:GLU:HG3	1.60	0.66
1:A:283:GLN:HA	1:A:286:PHE:HD1	1.61	0.66
1:A:39:GLU:OE2	2:A:517:FAD:H1B	1.96	0.66
1:B:332:ASN:C	1:B:332:ASN:HD22	2.00	0.65
1:A:470:GLN:HB3	1:A:474:ILE:HB	1.78	0.65
1:A:99:TYR:CE2	1:A:167:LEU:HG	2.31	0.65
1:B:308:ASN:O	1:B:365:LYS:HD2	1.96	0.65
1:B:377:GLN:H	1:B:377:GLN:HE21	1.44	0.64
1:A:177:LEU:HD11	1:A:292:GLY:HA2	1.78	0.64
1:A:404:LYS:HA	1:A:404:LYS:HE3	1.80	0.64
1:A:449:ALA:HA	2:A:517:FAD:HM83	1.80	0.63
1:B:47:ARG:NH2	1:B:254:PRO:HB3	2.12	0.63
1:A:385:GLU:HG2	1:A:438:SER:O	1.99	0.63
1:B:141:PHE:CD1	1:B:187:THR:HG21	2.34	0.63
1:B:297:VAL:HG22	1:B:437:VAL:HG13	1.81	0.63
1:A:439:ASN:ND2	1:A:442:ARG:HB2	2.14	0.62
1:B:121:GLU:HG3	1:A:193:GLY:HA2	1.82	0.62
1:A:104:ARG:CZ	1:A:113:LEU:HD11	2.29	0.62
1:B:50:THR:CG2	1:B:58:LYS:HE2	2.29	0.62

*Continued on next page...*

*Continued from previous page...*

Atom-1	Atom-2	Interatomic distance (Å)	Clash overlap (Å)
1:B:9:LYS:O	1:B:246:ALA:HA	2.00	0.61
1:A:267:ASN:HD21	1:A:269:ARG:HH22	1.47	0.61
1:A:325:GLU:HA	1:A:328:ARG:HB2	1.82	0.61
3:B:518:SP9:HAJA	3:B:518:SP9:OAA	2.01	0.61
1:A:377:GLN:NE2	1:A:377:GLN:N	2.40	0.61
1:B:401:VAL:O	1:B:405:ILE:HG13	2.01	0.61
1:A:269:ARG:HB3	1:A:444:PRO:HB2	1.83	0.60
1:B:479:GLU:HG2	2:B:517:FAD:O3'	2.02	0.60
1:B:12:ILE:HG13	1:B:246:ALA:HB2	1.83	0.60
1:A:55:GLN:NE2	1:A:57:ARG:HH21	1.98	0.60
1:B:57:ARG:HD3	1:B:369:VAL:CG1	2.32	0.60
1:B:506:LEU:O	1:B:510:GLU:HG3	2.02	0.60
1:A:13:ILE:HD13	1:A:23:ALA:HB3	1.83	0.60
1:A:288:LYS:HD2	1:A:461:ASP:OD1	2.02	0.59
1:A:404:LYS:NZ	1:A:407:LYS:HD3	2.17	0.59
1:B:486:ALA:O	3:B:518:SP9:CAN	2.50	0.59
1:B:502:ARG:HG2	1:B:502:ARG:HH11	1.68	0.59
1:A:265:GLU:OE2	1:A:267:ASN:HB3	2.02	0.59
1:B:249:VAL:O	1:B:249:VAL:HG13	2.01	0.59
1:A:395:PHE:CD1	1:A:432:LEU:HD23	2.38	0.59
1:B:253:VAL:HG11	1:B:272:ILE:HD11	1.85	0.59
1:A:169:ARG:O	1:A:172:GLU:HG3	2.03	0.59
1:B:67:HIS:CD2	3:B:518:SP9:CAB	2.83	0.59
1:B:157:THR:OG1	1:B:160:GLN:HG3	2.03	0.59
1:B:479:GLU:HB2	1:B:487:GLY:CA	2.32	0.59
1:B:213:PRO:HG2	1:B:216:TRP:CD2	2.39	0.58
1:B:258:LEU:HD21	1:B:476:PHE:CE2	2.38	0.58
1:A:177:LEU:CD2	1:A:452:ALA:HB1	2.33	0.58
1:B:176:GLY:O	1:B:177:LEU:HD12	2.03	0.58
1:B:502:ARG:HG2	1:B:502:ARG:NH1	2.19	0.58
1:A:283:GLN:HA	1:A:286:PHE:CD1	2.39	0.58
1:A:442:ARG:HG2	1:A:442:ARG:HH11	1.68	0.57
1:B:359:PHE:HD2	1:B:375:LEU:HD22	1.68	0.57
1:B:72:ASN:C	1:B:72:ASN:ND2	2.57	0.57
1:A:200:ASN:O	1:A:203:SER:HB3	2.05	0.57
1:B:271:ARG:HH21	1:B:273:GLU:CG	2.18	0.57
1:A:167:LEU:HA	1:A:316:LEU:CD2	2.34	0.57
1:A:324:VAL:O	1:A:328:ARG:HG2	2.05	0.56
1:A:353:CYS:SG	1:A:401:VAL:HG13	2.44	0.56
1:B:12:ILE:HG12	1:B:36:LEU:HB2	1.87	0.56
1:A:237:ASN:OD1	1:A:243:VAL:HG22	2.05	0.56

*Continued on next page...*

*Continued from previous page...*

Atom-1	Atom-2	Interatomic distance (Å)	Clash overlap (Å)
1:A:388:ARG:HB2	1:A:437:VAL:HB	1.87	0.56
1:B:37:VAL:HB	1:B:217:LEU:HD12	1.86	0.56
1:B:295:GLY:HA3	1:B:381:THR:HG23	1.88	0.56
1:A:138:ASP:OD2	1:A:455:PRO:HA	2.06	0.56
1:A:228:ARG:HG2	1:A:228:ARG:HH11	1.70	0.56
1:B:226:ILE:HD12	1:B:274:PHE:CE2	2.41	0.56
1:A:434:ASN:ND2	1:A:435:ILE:H	2.03	0.56
1:B:362:ASN:ND2	1:B:364:SER:H	2.04	0.56
1:A:416:ASP:OD1	1:A:416:ASP:C	2.44	0.56
1:B:475:ARG:HB3	1:B:499:GLU:OE1	2.06	0.56
1:A:395:PHE:CE2	1:A:416:ASP:HB2	2.41	0.56
1:B:39:GLU:OE2	2:B:517:FAD:H1B	2.05	0.55
1:B:237:ASN:CG	1:B:243:VAL:HG22	2.26	0.55
1:A:171:LEU:HD13	1:A:187:THR:CG2	2.34	0.55
1:B:77:GLU:O	1:B:80:GLN:HB2	2.07	0.55
1:B:353:CYS:SG	1:B:401:VAL:HG13	2.47	0.55
1:B:377:GLN:NE2	1:B:377:GLN:N	2.55	0.55
1:B:421:ILE:O	1:B:421:ILE:HG22	2.05	0.55
1:A:184:ALA:O	1:A:186:ASP:N	2.41	0.55
1:B:70:LEU:HD23	1:A:152:ARG:CZ	2.37	0.54
1:B:259:ASN:O	1:B:262:VAL:HG22	2.07	0.54
1:A:138:ASP:OD1	1:A:185:LYS:HB2	2.07	0.54
1:A:306:TRP:HE1	1:A:362:ASN:HD21	1.56	0.54
1:B:102:GLU:HG3	1:B:354:TRP:CZ2	2.42	0.54
1:A:78:GLU:CD	1:A:204:VAL:HG22	2.28	0.54
1:B:375:LEU:CD2	3:B:518:SP9:HAS	2.38	0.54
1:A:138:ASP:O	1:A:139:CYS:CB	2.56	0.54
1:B:267:ASN:O	1:B:268:LEU:C	2.46	0.54
1:B:226:ILE:O	1:B:274:PHE:HA	2.08	0.54
1:A:125:PHE:CD2	1:A:148:TYR:HB2	2.42	0.54
1:B:67:HIS:CE1	3:B:518:SP9:HAE	2.43	0.54
1:B:485:GLY:O	1:B:488:CYS:HB2	2.08	0.54
1:B:242:THR:HB	1:B:244:TYR:CE1	2.42	0.54
1:B:302:GLU:HG3	1:B:431:VAL:HB	1.89	0.53
1:A:432:LEU:HD21	1:A:435:ILE:HD11	1.91	0.53
1:B:14:ILE:CD1	1:B:226:ILE:HD11	2.38	0.53
1:B:119:ASP:O	1:B:122:MET:HB3	2.09	0.53
1:A:48:LEU:CD2	1:A:63:ALA:HB3	2.39	0.53
1:B:14:ILE:HD12	1:B:226:ILE:HD11	1.91	0.53
1:B:193:GLY:HA2	1:A:121:GLU:HG3	1.90	0.53
1:A:265:GLU:CG	1:A:268:LEU:HG	2.38	0.53

*Continued on next page...*

*Continued from previous page...*

Atom-1	Atom-2	Interatomic distance (Å)	Clash overlap (Å)
1:A:414:VAL:HA	1:A:430:PRO:HG2	1.91	0.53
1:B:63:ALA:HA	2:B:517:FAD:N5	2.23	0.53
1:B:226:ILE:HG12	1:B:236:VAL:CG1	2.39	0.53
1:A:98:ILE:HG12	1:A:106:ARG:NH2	2.24	0.53
1:A:320:THR:O	1:A:323:PHE:HB3	2.09	0.53
1:A:322:GLU:O	1:A:326:ILE:HG13	2.09	0.53
1:B:279:LYS:HE2	1:B:470:GLN:HA	1.91	0.53
1:A:289:ILE:HG21	1:A:462:MET:HB2	1.92	0.52
1:B:99:TYR:H	1:B:108:ASP:HB3	1.74	0.52
1:A:267:ASN:ND2	1:A:269:ARG:HH22	2.08	0.52
1:A:395:PHE:HD1	1:A:432:LEU:HD23	1.75	0.52
1:A:503:ILE:O	1:A:507:LEU:HG	2.10	0.52
1:B:362:ASN:HD21	1:B:364:SER:CB	2.22	0.52
1:A:99:TYR:H	1:A:108:ASP:HB3	1.75	0.52
1:A:177:LEU:HD21	1:A:452:ALA:CB	2.39	0.52
1:A:434:ASN:ND2	1:A:435:ILE:N	2.58	0.52
1:B:67:HIS:ND1	1:B:195:ASN:OD1	2.43	0.52
1:B:36:LEU:HB3	1:B:38:LEU:HD21	1.92	0.52
1:B:48:LEU:CD2	1:B:63:ALA:HB3	2.40	0.51
1:A:55:GLN:NE2	1:A:57:ARG:NH2	2.59	0.51
1:B:104:ARG:CZ	1:B:113:LEU:HD11	2.40	0.51
1:A:89:ARG:HG3	1:A:89:ARG:HH11	1.75	0.51
1:A:265:GLU:HG2	1:A:268:LEU:HG	1.91	0.51
1:B:81:LEU:HD11	1:B:207:ARG:HH11	1.73	0.51
1:A:5:SER:HB2	1:A:6:PRO:CD	2.41	0.51
1:B:279:LYS:HG2	1:B:470:GLN:OE1	2.11	0.51
1:A:259:ASN:O	1:A:262:VAL:HG22	2.11	0.51
1:B:72:ASN:HD21	1:B:74:LEU:HB3	1.75	0.51
1:B:359:PHE:CD2	1:B:375:LEU:HD22	2.46	0.51
1:B:485:GLY:HA3	1:B:490:TYR:CE1	2.46	0.51
1:B:178:ASP:OD1	1:B:179:TRP:HD1	1.94	0.50
1:A:356:GLN:HB2	1:A:357:PRO:HD2	1.93	0.50
1:B:171:LEU:HD13	1:B:187:THR:HG22	1.93	0.50
1:B:440:TRP:HB3	1:B:448:GLY:O	2.11	0.50
1:A:108:ASP:O	1:A:109:HIS:C	2.50	0.50
1:B:271:ARG:HD3	1:B:271:ARG:C	2.30	0.50
1:A:295:GLY:HA3	1:A:381:THR:HG23	1.94	0.50
1:B:226:ILE:HG12	1:B:236:VAL:HG12	1.94	0.50
1:B:288:LYS:O	1:B:289:ILE:O	2.30	0.50
1:B:405:ILE:HG22	1:B:409:LEU:HD12	1.93	0.50
1:A:449:ALA:HA	2:A:517:FAD:C8M	2.42	0.50

*Continued on next page...*

*Continued from previous page...*

Atom-1	Atom-2	Interatomic distance (Å)	Clash overlap (Å)
1:A:77:GLU:HG2	1:A:207:ARG:NH2	2.26	0.50
1:B:52:THR:HA	1:B:57:ARG:O	2.11	0.50
1:B:212:PHE:HB2	1:B:213:PRO:HD2	1.94	0.50
1:B:395:PHE:HB2	1:B:418:MET:HE1	1.94	0.50
1:A:73:PRO:HB2	1:A:493:TRP:CZ3	2.47	0.49
1:B:57:ARG:HD3	1:B:369:VAL:HG11	1.94	0.49
1:A:63:ALA:HA	2:A:517:FAD:C4X	2.42	0.49
1:A:91:VAL:HG13	1:A:91:VAL:O	2.10	0.49
1:A:164:LEU:N	1:A:165:PRO:HD2	2.27	0.49
1:A:341:GLU:O	1:A:342:ARG:C	2.50	0.49
1:B:488:CYS:SG	3:B:518:SP9:CAN	2.91	0.49
1:B:36:LEU:CD1	1:B:244:TYR:CD2	2.96	0.49
1:A:399:GLN:N	1:A:400:PRO:HD2	2.28	0.49
1:B:453:CYS:HA	1:B:457:ASP:OD2	2.12	0.49
1:B:113:LEU:CD2	1:B:159:ASP:HB3	2.43	0.49
1:A:60:ASP:HB3	1:A:63:ALA:O	2.13	0.49
1:A:457:ASP:O	1:A:459:PRO:HD3	2.13	0.49
1:B:358:LEU:HD22	1:B:374:MET:CE	2.43	0.49
1:A:133:HIS:HB3	1:A:136:VAL:HG21	1.94	0.49
1:A:113:LEU:HB3	1:A:115:LEU:HG	1.95	0.48
1:A:157:THR:OG1	1:A:160:GLN:HG3	2.13	0.48
1:B:265:GLU:O	1:B:267:ASN:N	2.45	0.48
1:B:305:CYS:O	1:B:305:CYS:SG	2.72	0.48
1:A:311:SER:HA	1:A:362:ASN:HB3	1.95	0.48
1:B:254:PRO:HD3	2:B:517:FAD:H51A	1.95	0.48
1:B:294:LEU:HD22	1:B:450:TYR:OH	2.13	0.48
1:A:5:SER:HB2	1:A:6:PRO:HD3	1.95	0.48
1:A:12:ILE:HG13	1:A:246:ALA:HB2	1.94	0.48
1:A:133:HIS:HB3	1:A:136:VAL:CG2	2.43	0.48
1:B:22:LYS:HG3	1:B:493:TRP:CD1	2.48	0.48
1:A:449:ALA:CA	2:A:517:FAD:HM83	2.43	0.48
1:B:16:ALA:HB2	1:B:39:GLU:HB2	1.96	0.48
1:B:67:HIS:NE2	3:B:518:SP9:CAB	2.76	0.48
1:B:177:LEU:HD21	1:B:454:PHE:CE2	2.49	0.48
1:A:434:ASN:HD22	1:A:435:ILE:H	1.62	0.48
1:B:296:LYS:HE2	1:B:373:MET:SD	2.54	0.47
1:A:442:ARG:HG2	1:A:442:ARG:NH1	2.29	0.47
1:B:74:LEU:HD13	1:B:493:TRP:NE1	2.29	0.47
1:A:122:MET:O	1:A:125:PHE:HB3	2.15	0.47
1:A:87:ARG:HB2	1:A:89:ARG:HH12	1.79	0.47
1:A:66:HIS:HB2	1:A:196:ALA:HB3	1.96	0.47

*Continued on next page...*

*Continued from previous page...*

Atom-1	Atom-2	Interatomic distance (Å)	Clash overlap (Å)
1:B:38:LEU:N	1:B:38:LEU:HD23	2.30	0.47
1:A:28:HIS:CD2	1:A:213:PRO:HD3	2.50	0.47
1:A:158:ASN:ND2	1:A:328:ARG:HH21	2.13	0.47
1:A:177:LEU:CD1	1:A:292:GLY:HA2	2.45	0.47
1:A:107:VAL:O	1:A:115:LEU:HD12	2.15	0.47
1:A:374:MET:HG2	1:A:375:LEU:N	2.30	0.47
1:B:499:GLU:O	1:B:503:ILE:HG13	2.14	0.46
1:B:331:GLU:O	1:B:332:ASN:HB3	2.15	0.46
1:A:228:ARG:HG2	1:A:228:ARG:NH1	2.30	0.46
1:B:22:LYS:HE3	1:B:493:TRP:CZ2	2.50	0.46
1:A:262:VAL:CG1	1:A:283:GLN:HB3	2.46	0.46
1:A:298:ILE:HB	1:A:436:ILE:HB	1.96	0.46
1:A:439:ASN:HD21	1:A:442:ARG:HD3	1.80	0.46
1:B:48:LEU:HD22	1:B:63:ALA:HB3	1.97	0.46
1:A:387:ILE:O	1:A:387:ILE:HG13	2.16	0.46
1:A:466:MET:HE2	1:A:466:MET:HA	1.98	0.46
1:B:260:LEU:HD11	1:B:447:ARG:NH1	2.31	0.46
1:B:382:ASN:HB3	4:B:522:HOH:O	2.15	0.46
1:A:138:ASP:O	1:A:139:CYS:HB3	2.14	0.46
1:A:165:PRO:O	1:A:169:ARG:HG3	2.15	0.46
1:A:166:GLN:OE1	1:A:317:ALA:HB3	2.16	0.46
1:A:130:PHE:O	1:A:131:HIS:C	2.54	0.46
1:B:362:ASN:ND2	1:B:362:ASN:C	2.68	0.46
1:B:13:ILE:HD12	1:B:24:ALA:HB2	1.98	0.46
1:B:36:LEU:HD13	1:B:244:TYR:CD2	2.51	0.46
1:B:102:GLU:HG3	1:B:354:TRP:CE2	2.50	0.46
1:B:36:LEU:HD11	1:B:244:TYR:HD2	1.80	0.45
1:B:113:LEU:HD21	1:B:159:ASP:HB3	1.97	0.45
1:B:142:PHE:HB2	1:B:179:TRP:O	2.16	0.45
2:B:517:FAD:C2	3:B:518:SP9:CAB	2.95	0.45
1:B:67:HIS:NE2	3:B:518:SP9:CAI	2.80	0.45
1:A:32:ILE:HD12	1:A:507:LEU:HD12	1.99	0.45
1:B:125:PHE:CD2	1:B:148:TYR:HB2	2.52	0.45
1:B:67:HIS:HE1	3:B:518:SP9:CAE	2.29	0.45
1:B:169:ARG:HD2	1:B:179:TRP:CE2	2.52	0.45
2:B:517:FAD:N3	3:B:518:SP9:HABA	2.31	0.45
1:B:110:ASP:HB3	1:B:113:LEU:HB2	1.98	0.45
1:B:353:CYS:HB3	1:B:397:PHE:O	2.16	0.45
1:A:72:ASN:HB3	1:A:75:PHE:HB3	1.98	0.45
1:A:162:ARG:HB2	1:A:324:VAL:HG22	1.99	0.45
1:A:460:VAL:O	1:A:464:VAL:HG23	2.17	0.45

*Continued on next page...*



*Continued from previous page...*

Atom-1	Atom-2	Interatomic distance (Å)	Clash overlap (Å)
1:A:40:ALA:O	1:A:220:SER:HA	2.16	0.45
1:A:158:ASN:HD22	1:A:328:ARG:HH21	1.62	0.45
1:A:185:LYS:HB2	1:A:185:LYS:HE3	1.81	0.45
1:B:479:GLU:OE1	1:B:487:GLY:HA2	2.17	0.45
1:A:335:GLU:HG2	1:A:339:MET:CE	2.47	0.45
1:A:291:PHE:CD2	1:A:448:GLY:HA3	2.51	0.44
1:A:326:ILE:HG21	1:A:340:LEU:CD2	2.46	0.44
1:B:41:ARG:NH1	2:B:517:FAD:O2B	2.51	0.44
1:A:87:ARG:HB2	1:A:89:ARG:NH1	2.31	0.44
1:A:175:HIS:CD2	1:A:182:LEU:HD21	2.51	0.44
1:B:13:ILE:HD13	1:B:23:ALA:HB3	1.99	0.44
1:B:37:VAL:C	1:B:38:LEU:HD23	2.38	0.44
1:A:184:ALA:C	1:A:186:ASP:N	2.69	0.44
1:B:16:ALA:HB1	1:B:44:VAL:HG12	1.99	0.44
1:B:54:TYR:CE2	1:B:55:GLN:HG3	2.53	0.44
1:B:169:ARG:NE	1:B:172:GLU:OE2	2.43	0.44
1:A:395:PHE:CZ	1:A:416:ASP:HB2	2.52	0.44
1:A:462:MET:SD	1:A:466:MET:HG2	2.56	0.44
1:A:118:VAL:CG2	1:A:164:LEU:HD22	2.47	0.44
1:B:115:LEU:HB3	1:B:167:LEU:HD13	1.98	0.44
1:B:332:ASN:ND2	1:B:332:ASN:C	2.69	0.44
1:A:158:ASN:ND2	1:A:328:ARG:HE	2.16	0.44
1:B:262:VAL:HG23	1:B:262:VAL:O	2.18	0.44
1:B:176:GLY:C	1:B:177:LEU:HD12	2.38	0.43
1:B:313:ILE:HG22	1:B:314:VAL:N	2.33	0.43
1:B:36:LEU:HD11	1:B:244:TYR:CD2	2.53	0.43
1:A:262:VAL:O	1:A:262:VAL:HG23	2.18	0.43
1:B:412:GLU:CD	1:B:429:LYS:HG2	2.39	0.43
2:B:517:FAD:C10	3:B:518:SP9:HABB	2.49	0.43
1:A:267:ASN:ND2	1:A:267:ASN:O	2.52	0.43
1:B:124:LYS:HD3	1:B:124:LYS:HA	1.88	0.42
1:B:141:PHE:CZ	1:B:171:LEU:HD12	2.54	0.42
1:B:251:ILE:HD13	1:B:274:PHE:HE2	1.82	0.42
1:A:11:VAL:HB	1:A:35:CYS:SG	2.58	0.42
1:A:11:VAL:HG11	1:A:27:LEU:HD11	2.01	0.42
1:A:414:VAL:HG22	1:A:430:PRO:HG2	2.01	0.42
1:B:314:VAL:HA	1:B:358:LEU:O	2.19	0.42
1:B:338:SER:C	1:B:340:LEU:N	2.72	0.42
1:A:340:LEU:O	1:A:342:ARG:N	2.52	0.42
1:B:249:VAL:CG1	1:B:474:ILE:HG23	2.50	0.42
1:B:404:LYS:HD2	1:B:404:LYS:HA	1.85	0.42

*Continued on next page...*

*Continued from previous page...*

Atom-1	Atom-2	Interatomic distance (Å)	Clash overlap (Å)
1:A:184:ALA:C	1:A:186:ASP:H	2.22	0.42
1:B:169:ARG:HD2	1:B:179:TRP:CD2	2.54	0.42
1:B:17:GLY:O	1:B:21:LEU:HG	2.19	0.42
1:B:59:TYR:HE1	1:B:300:GLU:OE2	2.01	0.42
1:B:219:LEU:O	1:B:220:SER:HB2	2.20	0.42
1:B:362:ASN:HD21	1:B:364:SER:HB2	1.85	0.42
1:A:158:ASN:HD21	1:A:328:ARG:HE	1.68	0.42
1:B:63:ALA:HB2	2:B:517:FAD:O2'	2.20	0.42
1:A:296:LYS:HA	1:A:374:MET:O	2.20	0.42
1:B:268:LEU:O	1:B:271:ARG:HB3	2.19	0.42
1:A:14:ILE:HD12	1:A:14:ILE:N	2.35	0.42
1:A:46:GLY:C	1:A:48:LEU:H	2.23	0.42
1:A:308:ASN:HB3	1:A:365:LYS:HB2	2.01	0.42
1:B:35:CYS:HB2	1:B:216:TRP:CE2	2.54	0.42
1:B:240:ASP:OD1	1:B:241:GLY:N	2.53	0.42
2:B:517:FAD:C2	3:B:518:SP9:HABA	2.50	0.42
1:A:135:GLY:O	1:A:136:VAL:C	2.58	0.42
1:A:212:PHE:O	1:A:213:PRO:C	2.57	0.42
1:A:294:LEU:H	1:A:449:ALA:CB	2.33	0.42
1:A:294:LEU:HD12	1:A:376:MET:O	2.19	0.42
1:B:63:ALA:HA	2:B:517:FAD:C4X	2.50	0.42
1:A:437:VAL:HG12	1:A:438:SER:N	2.34	0.42
1:A:239:GLU:C	1:A:241:GLY:H	2.24	0.41
1:B:199:LEU:HD23	1:B:199:LEU:HA	1.67	0.41
1:B:154:GLN:NE2	1:A:83:LEU:HB2	2.35	0.41
1:B:429:LYS:H	1:B:429:LYS:HG3	1.51	0.41
1:A:57:ARG:HD3	1:A:369:VAL:HG13	2.02	0.41
1:B:59:TYR:OH	1:B:300:GLU:HG2	2.21	0.41
1:B:447:ARG:HG2	1:B:447:ARG:HH11	1.86	0.41
1:A:247:ASP:O	1:A:473:ARG:HD3	2.21	0.41
1:A:268:LEU:O	1:A:269:ARG:C	2.59	0.41
1:B:274:PHE:CD1	1:B:274:PHE:N	2.88	0.41
1:B:349:THR:O	1:B:350:SER:CB	2.69	0.41
1:B:39:GLU:CD	2:B:517:FAD:HO3A	2.24	0.41
1:B:226:ILE:HB	1:B:274:PHE:CD2	2.56	0.41
1:A:226:ILE:HD13	1:A:251:ILE:HD11	2.03	0.41
1:A:285:ALA:O	1:A:289:ILE:HG22	2.20	0.41
1:A:35:CYS:HB2	1:A:216:TRP:CH2	2.56	0.41
1:A:138:ASP:O	1:A:139:CYS:SG	2.79	0.41
1:A:449:ALA:CB	2:A:517:FAD:HM83	2.50	0.41
1:B:9:LYS:HG3	1:B:36:LEU:CD1	2.50	0.41

*Continued on next page...*

Continued from previous page...

Atom-1	Atom-2	Interatomic distance (Å)	Clash overlap (Å)
1:B:88:THR:HG22	1:B:199:LEU:HD12	2.02	0.41
1:B:91:VAL:HG13	1:B:91:VAL:O	2.21	0.41
1:B:93:ASP:OD2	1:B:197:PHE:HB2	2.20	0.41
1:B:311:SER:OG	1:B:312:LYS:NZ	2.54	0.41
1:B:502:ARG:HH11	1:B:502:ARG:CG	2.33	0.41
1:B:169:ARG:C	1:B:171:LEU:N	2.74	0.41
1:B:213:PRO:HG2	1:B:216:TRP:CG	2.55	0.41
1:A:171:LEU:CD1	1:A:187:THR:HG22	2.38	0.41
1:A:240:ASP:OD1	1:A:240:ASP:C	2.60	0.41
1:A:307:SER:O	1:A:409:LEU:HD22	2.21	0.41
1:B:148:TYR:CE1	1:B:152:ARG:HG3	2.55	0.40
1:B:217:LEU:HD21	1:B:219:LEU:HD21	2.02	0.40
1:A:129:GLU:OE1	1:A:129:GLU:HA	2.21	0.40
1:A:263:GLN:HB3	1:A:264:PRO:CD	2.45	0.40
1:B:466:MET:CB	1:B:481:THR:HG22	2.43	0.40
1:A:115:LEU:O	1:A:118:VAL:HG22	2.20	0.40
1:B:391:LYS:O	1:B:418:MET:HE1	2.21	0.40
1:A:200:ASN:N	4:A:518:HOH:O	2.54	0.40
1:A:250:ILE:HD11	1:A:503:ILE:HD12	2.03	0.40
1:B:12:ILE:O	1:B:249:VAL:HG23	2.21	0.40
1:B:234:VAL:CG2	1:B:473:ARG:HB3	2.52	0.40
1:B:268:LEU:O	1:B:269:ARG:C	2.58	0.40
1:B:269:ARG:HG3	1:B:445:TYR:CE2	2.57	0.40
1:A:297:VAL:HG23	1:A:376:MET:HE2	2.02	0.40
1:A:326:ILE:HD13	1:A:340:LEU:HD23	2.04	0.40
1:B:387:ILE:O	1:B:387:ILE:HG13	2.22	0.40
1:B:485:GLY:O	1:B:486:ALA:C	2.60	0.40

All (2) symmetry-related close contacts are listed below. The label for Atom-2 includes the symmetry operator and encoded unit-cell translations to be applied.

Atom-1	Atom-2	Interatomic distance (Å)	Clash overlap (Å)
1:A:269:ARG:NH2	1:A:269:ARG:NH2[2_555]	1.98	0.22
1:A:269:ARG:NE	1:A:269:ARG:NE[2_555]	2.19	0.01

## 5.3 Torsion angles [i](#)

### 5.3.1 Protein backbone [i](#)

In the following table, the Percentiles column shows the percent Ramachandran outliers of the chain as a percentile score with respect to all X-ray entries followed by that with respect to entries of similar resolution.

The Analysed column shows the number of residues for which the backbone conformation was analysed, and the total number of residues.

Mol	Chain	Analysed	Favoured	Allowed	Outliers	Percentiles	
1	A	491/516 (95%)	428 (87%)	47 (10%)	16 (3%)	4	8
1	B	489/516 (95%)	405 (83%)	60 (12%)	24 (5%)	2	4
All	All	980/1032 (95%)	833 (85%)	107 (11%)	40 (4%)	3	6

All (40) Ramachandran outliers are listed below:

Mol	Chain	Res	Type
1	B	266	LYS
1	B	289	ILE
1	B	290	HIS
1	B	341	GLU
1	A	131	HIS
1	A	136	VAL
1	A	139	CYS
1	A	317	ALA
1	A	338	SER
1	B	55	GLN
1	B	342	ARG
1	B	427	ALA
1	B	460	VAL
1	B	469	GLY
1	A	185	LYS
1	A	200	ASN
1	A	339	MET
1	B	69	THR
1	B	232	LYS
1	B	242	THR
1	A	132	GLN
1	A	340	LEU
1	A	341	GLU
1	A	342	ARG
1	B	44	VAL

*Continued on next page...*

*Continued from previous page...*

Mol	Chain	Res	Type
1	B	86	GLY
1	B	231	SER
1	B	239	GLU
1	B	268	LEU
1	B	455	PRO
1	A	47	ARG
1	A	265	GLU
1	A	413	ASP
1	B	200	ASN
1	B	350	SER
1	B	370	ALA
1	B	420	PRO
1	B	421	ILE
1	A	138	ASP
1	B	241	GLY

### 5.3.2 Protein sidechains [i](#)

In the following table, the Percentiles column shows the percent sidechain outliers of the chain as a percentile score with respect to all X-ray entries followed by that with respect to entries of similar resolution.

The Analysed column shows the number of residues for which the sidechain conformation was analysed, and the total number of residues.

Mol	Chain	Analysed	Rotameric	Outliers	Percentiles	
1	A	420/457 (92%)	395 (94%)	25 (6%)	19	42
1	B	400/457 (88%)	383 (96%)	17 (4%)	29	57
All	All	820/914 (90%)	778 (95%)	42 (5%)	24	50

All (42) residues with a non-rotameric sidechain are listed below:

Mol	Chain	Res	Type
1	B	72	ASN
1	B	90	PHE
1	B	123	SER
1	B	179	TRP
1	B	186	ASP
1	B	201	TYR
1	B	221	CYS
1	B	242	THR

*Continued on next page...*

*Continued from previous page...*

<b>Mol</b>	<b>Chain</b>	<b>Res</b>	<b>Type</b>
1	B	271	ARG
1	B	273	GLU
1	B	310	SER
1	B	332	ASN
1	B	377	GLN
1	B	380	LEU
1	B	447	ARG
1	B	474	ILE
1	B	479	GLU
1	A	22	LYS
1	A	64	SER
1	A	129	GLU
1	A	177	LEU
1	A	179	TRP
1	A	183	SER
1	A	189	PHE
1	A	201	TYR
1	A	221	CYS
1	A	227	THR
1	A	239	GLU
1	A	267	ASN
1	A	269	ARG
1	A	283	GLN
1	A	291	PHE
1	A	332	ASN
1	A	350	SER
1	A	377	GLN
1	A	389	GLU
1	A	404	LYS
1	A	439	ASN
1	A	479	GLU
1	A	484	ASP
1	A	508	LYS
1	A	512	HIS

Sometimes sidechains can be flipped to improve hydrogen bonding and reduce clashes. All (27) such sidechains are listed below:

<b>Mol</b>	<b>Chain</b>	<b>Res</b>	<b>Type</b>
1	B	28	HIS
1	B	30	ASN
1	B	72	ASN
1	B	151	GLN

*Continued on next page...*

*Continued from previous page...*

Mol	Chain	Res	Type
1	B	192	GLN
1	B	267	ASN
1	B	275	GLN
1	B	329	ASN
1	B	332	ASN
1	B	362	ASN
1	B	377	GLN
1	B	382	ASN
1	B	423	ASN
1	B	434	ASN
1	B	439	ASN
1	B	470	GLN
1	A	28	HIS
1	A	33	GLN
1	A	49	GLN
1	A	55	GLN
1	A	158	ASN
1	A	259	ASN
1	A	267	ASN
1	A	362	ASN
1	A	377	GLN
1	A	434	ASN
1	A	439	ASN

### 5.3.3 RNA [i](#)

There are no RNA molecules in this entry.

### 5.4 Non-standard residues in protein, DNA, RNA chains [i](#)

There are no non-standard protein/DNA/RNA residues in this entry.

### 5.5 Carbohydrates [i](#)

There are no monosaccharides in this entry.

### 5.6 Ligand geometry [i](#)

3 ligands are modelled in this entry.

In the following table, the Counts columns list the number of bonds (or angles) for which Mogul statistics could be retrieved, the number of bonds (or angles) that are observed in the model and the number of bonds (or angles) that are defined in the Chemical Component Dictionary. The Link column lists molecule types, if any, to which the group is linked. The Z score for a bond length (or angle) is the number of standard deviations the observed value is removed from the expected value. A bond length (or angle) with  $|Z| > 2$  is considered an outlier worth inspection. RMSZ is the root-mean-square of all Z scores of the bond lengths (or angles).

Mol	Type	Chain	Res	Link	Bond lengths			Bond angles		
					Counts	RMSZ	# Z  > 2	Counts	RMSZ	# Z  > 2
2	FAD	A	517	-	53,58,58	1.28	4 (7%)	68,89,89	1.40	9 (13%)
3	SP9	B	518	-	19,19,19	0.49	0	20,22,22	0.55	0
2	FAD	B	517	-	53,58,58	1.29	5 (9%)	68,89,89	1.38	9 (13%)

In the following table, the Chirals column lists the number of chiral outliers, the number of chiral centers analysed, the number of these observed in the model and the number defined in the Chemical Component Dictionary. Similar counts are reported in the Torsion and Rings columns. '-' means no outliers of that kind were identified.

Mol	Type	Chain	Res	Link	Chirals	Torsions	Rings
2	FAD	A	517	-	-	1/30/50/50	0/6/6/6
3	SP9	B	518	-	-	13/16/16/16	0/1/1/1
2	FAD	B	517	-	-	1/30/50/50	0/6/6/6

All (9) bond length outliers are listed below:

Mol	Chain	Res	Type	Atoms	Z	Observed(Å)	Ideal(Å)
2	B	517	FAD	C4X-N5	5.01	1.40	1.30
2	A	517	FAD	C4X-N5	4.99	1.40	1.30
2	B	517	FAD	C10-N1	3.53	1.40	1.33
2	A	517	FAD	C10-N1	3.51	1.40	1.33
2	B	517	FAD	PA-O1A	2.98	1.61	1.50
2	A	517	FAD	PA-O1A	2.93	1.61	1.50
2	B	517	FAD	P-O1P	2.93	1.61	1.50
2	A	517	FAD	P-O1P	2.92	1.61	1.50
2	B	517	FAD	O4B-C1B	2.07	1.44	1.41

All (18) bond angle outliers are listed below:

Mol	Chain	Res	Type	Atoms	Z	Observed(°)	Ideal(°)
2	A	517	FAD	O4B-C1B-C2B	-4.62	100.18	106.93
2	B	517	FAD	N3A-C2A-N1A	-4.52	121.62	128.68
2	A	517	FAD	N3A-C2A-N1A	-4.34	121.90	128.68
2	A	517	FAD	P-O3P-PA	-3.88	119.50	132.83

*Continued on next page...*



*Continued from previous page...*

Mol	Chain	Res	Type	Atoms	Z	Observed(°)	Ideal(°)
2	B	517	FAD	O4B-C1B-C2B	-3.79	101.38	106.93
2	B	517	FAD	P-O3P-PA	-3.70	120.11	132.83
2	B	517	FAD	C4-N3-C2	-3.03	120.05	125.64
2	A	517	FAD	C4-N3-C2	-2.91	120.26	125.64
2	B	517	FAD	C4X-C4-N3	2.73	120.11	113.19
2	A	517	FAD	C4X-C4-N3	2.69	120.02	113.19
2	A	517	FAD	O4-C4-C4X	-2.60	119.70	126.60
2	B	517	FAD	O4-C4-C4X	-2.57	119.78	126.60
2	B	517	FAD	C9A-C5X-N5	-2.53	119.68	122.43
2	A	517	FAD	C9A-C5X-N5	-2.37	119.85	122.43
2	B	517	FAD	C10-C4X-N5	-2.27	120.03	124.86
2	A	517	FAD	C4X-C10-N10	2.23	119.74	116.48
2	A	517	FAD	C10-C4X-N5	-2.21	120.16	124.86
2	B	517	FAD	C4X-C10-N10	2.17	119.65	116.48

There are no chirality outliers.

All (15) torsion outliers are listed below:

Mol	Chain	Res	Type	Atoms
3	B	518	SP9	CAF-CAG-NAH-CAI
3	B	518	SP9	OAA-CAG-NAH-CAI
3	B	518	SP9	CAJ-CAI-NAH-CAG
3	B	518	SP9	NAH-CAI-CAJ-CAK
3	B	518	SP9	CAB-CAI-CAJ-CAK
3	B	518	SP9	NAL-CAM-CAN-CAO
3	B	518	SP9	CAS-CAF-CAG-OAA
3	B	518	SP9	CAS-CAF-CAG-NAH
3	B	518	SP9	CAE-CAF-CAG-OAA
3	B	518	SP9	CAM-CAN-CAO-CAP
3	B	518	SP9	CAE-CAF-CAG-NAH
2	A	517	FAD	O4B-C4B-C5B-O5B
2	B	517	FAD	O4B-C4B-C5B-O5B
3	B	518	SP9	CAN-CAM-NAL-CAK
3	B	518	SP9	CAN-CAO-CAP-NAQ

There are no ring outliers.

3 monomers are involved in 34 short contacts:

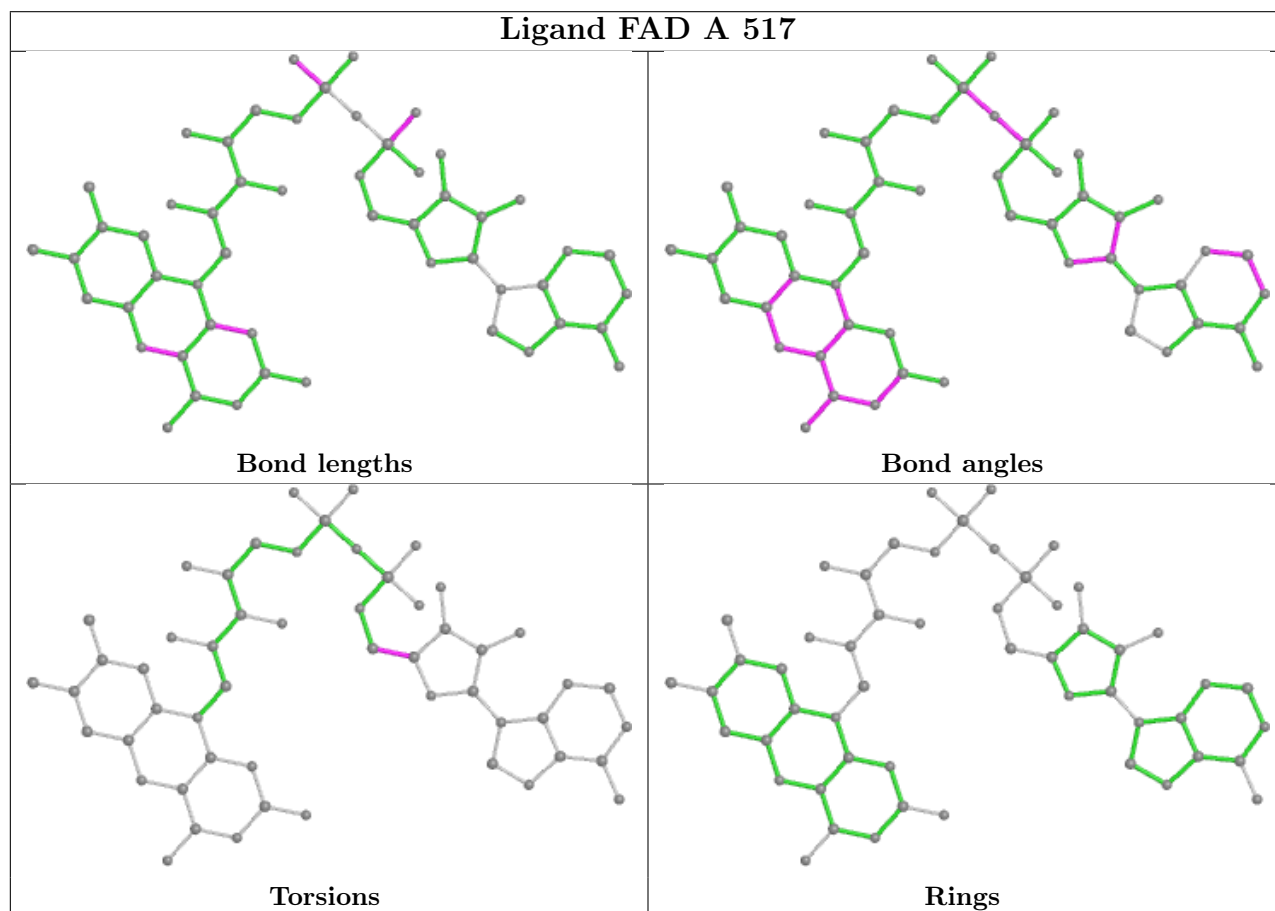
Mol	Chain	Res	Type	Clashes	Symm-Clashes
2	A	517	FAD	7	0
3	B	518	SP9	19	0

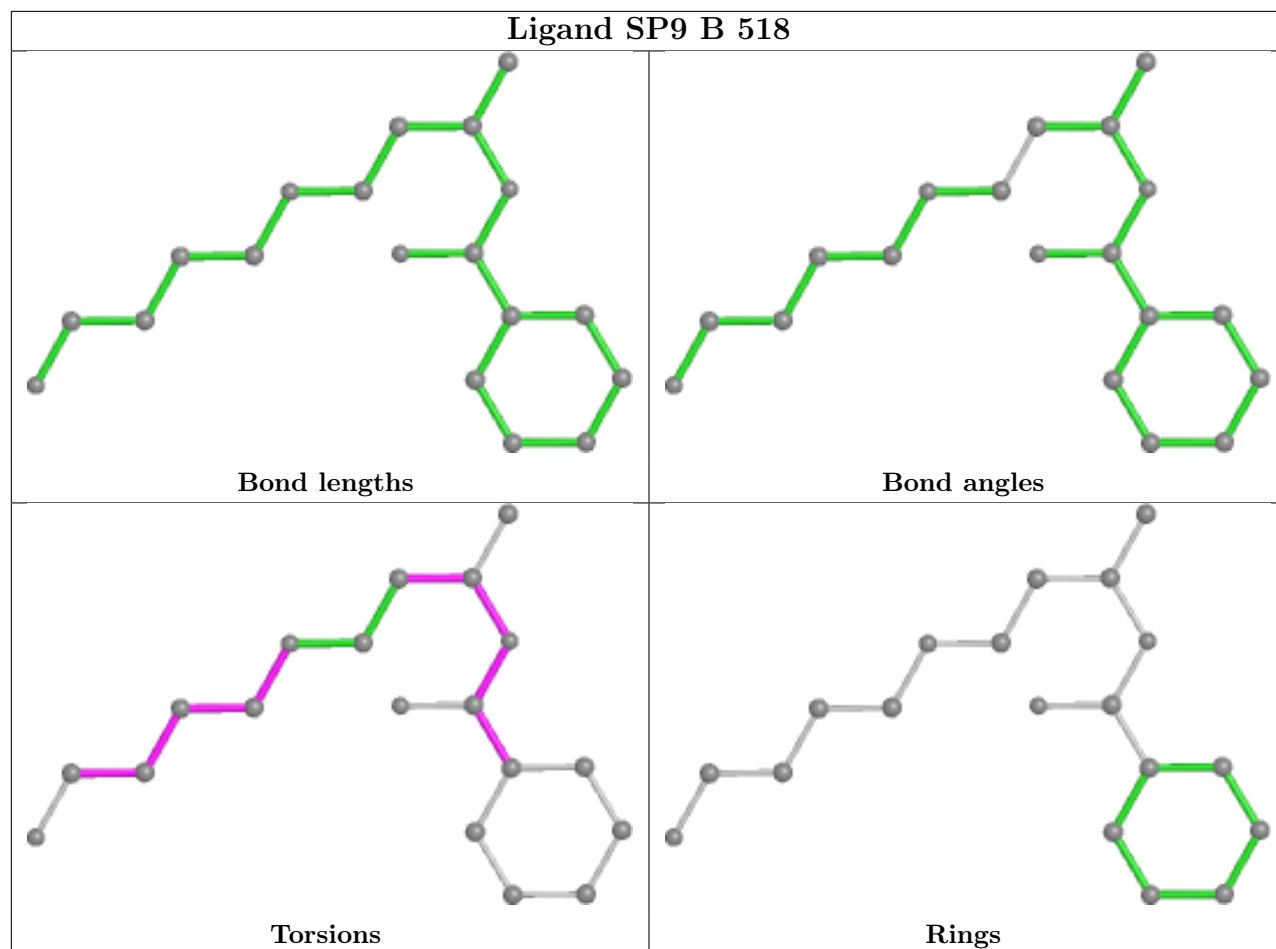
*Continued on next page...*

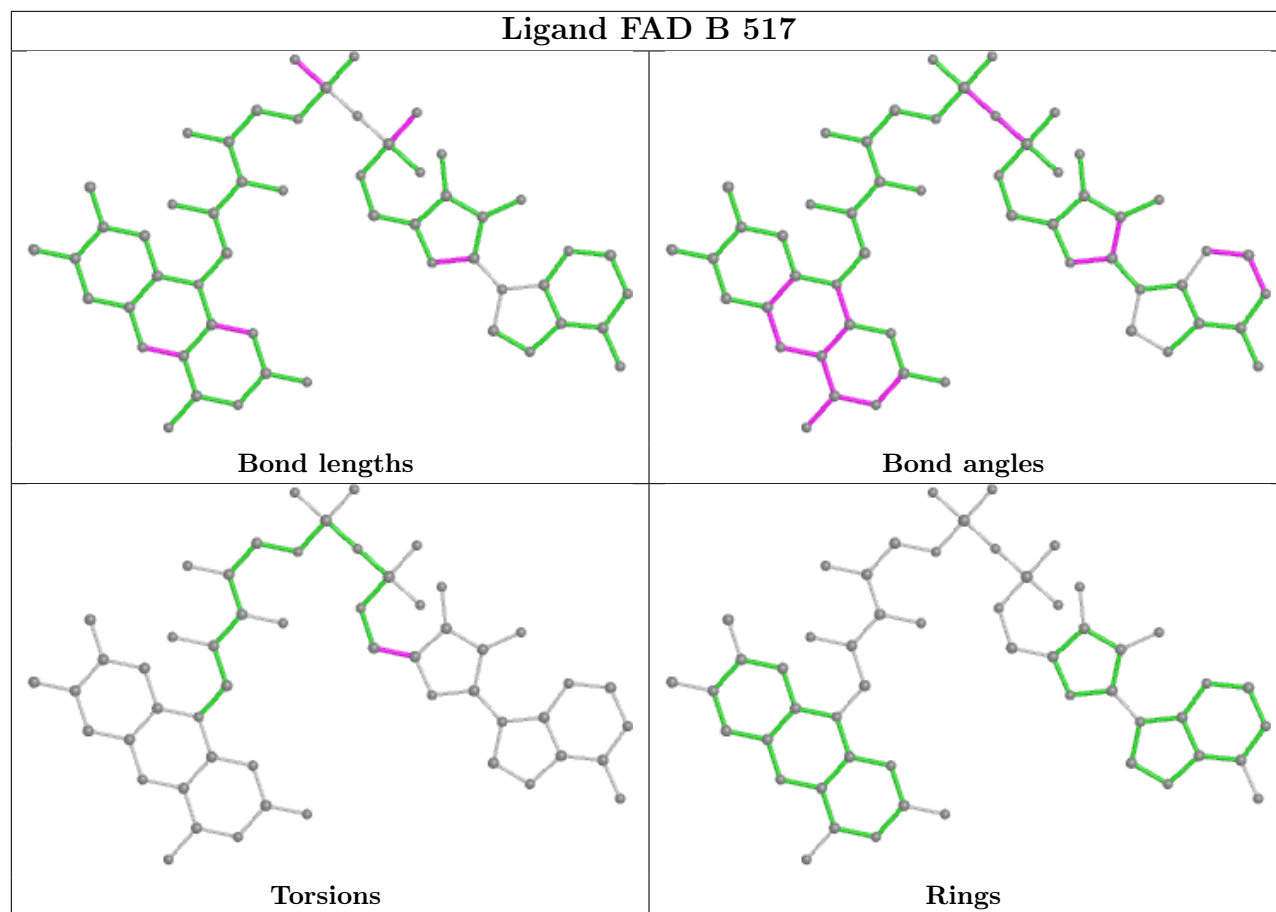
*Continued from previous page...*

Mol	Chain	Res	Type	Clashes	Symm-Clashes
2	B	517	FAD	12	0

The following is a two-dimensional graphical depiction of Mogul quality analysis of bond lengths, bond angles, torsion angles, and ring geometry for all instances of the Ligand of Interest. In addition, ligands with molecular weight > 250 and outliers as shown on the validation Tables will also be included. For torsion angles, if less than 5% of the Mogul distribution of torsion angles is within 10 degrees of the torsion angle in question, then that torsion angle is considered an outlier. Any bond that is central to one or more torsion angles identified as an outlier by Mogul will be highlighted in the graph. For rings, the root-mean-square deviation (RMSD) between the ring in question and similar rings identified by Mogul is calculated over all ring torsion angles. If the average RMSD is greater than 60 degrees and the minimal RMSD between the ring in question and any Mogul-identified rings is also greater than 60 degrees, then that ring is considered an outlier. The outliers are highlighted in purple. The color gray indicates Mogul did not find sufficient equivalents in the CSD to analyse the geometry.







## 5.7 Other polymers [i](#)

There are no such residues in this entry.

## 5.8 Polymer linkage issues [i](#)

There are no chain breaks in this entry.

## 6 Fit of model and data

### 6.1 Protein, DNA and RNA chains

In the following table, the column labelled ‘#RSRZ > 2’ contains the number (and percentage) of RSRZ outliers, followed by percent RSRZ outliers for the chain as percentile scores relative to all X-ray entries and entries of similar resolution. The OWAB column contains the minimum, median, 95<sup>th</sup> percentile and maximum values of the occupancy-weighted average B-factor per residue. The column labelled ‘Q < 0.9’ lists the number of (and percentage) of residues with an average occupancy less than 0.9.

Mol	Chain	Analysed	<RSRZ>	#RSRZ>2	OWAB(Å <sup>2</sup> )	Q<0.9
1	A	497/516 (96%)	0.02	11 (2%) 62 63	29, 54, 83, 107	0
1	B	495/516 (95%)	0.05	22 (4%) 34 33	40, 62, 91, 98	0
All	All	992/1032 (96%)	0.04	33 (3%) 46 46	29, 57, 90, 107	0

All (33) RSRZ outliers are listed below:

Mol	Chain	Res	Type	RSRZ
1	B	449	ALA	4.7
1	A	340	LEU	4.1
1	B	235	THR	3.8
1	B	237	ASN	3.7
1	A	427	ALA	3.7
1	B	236	VAL	3.7
1	A	330	ALA	3.4
1	A	327	VAL	3.4
1	B	33	GLN	3.1
1	B	338	SER	3.1
1	B	340	LEU	3.0
1	B	421	ILE	2.9
1	B	336	LEU	2.8
1	A	336	LEU	2.8
1	B	230	PRO	2.7
1	A	329	ASN	2.6
1	B	278	LEU	2.6
1	A	412	GLU	2.5
1	B	448	GLY	2.5
1	B	231	SER	2.5
1	A	509	LEU	2.4
1	B	227	THR	2.4
1	A	149	LEU	2.4
1	A	150	LEU	2.4

*Continued on next page...*

*Continued from previous page...*

Mol	Chain	Res	Type	RSRZ
1	B	244	TYR	2.3
1	B	150	LEU	2.3
1	A	428	ASN	2.2
1	B	274	PHE	2.2
1	B	509	LEU	2.1
1	B	453	CYS	2.1
1	B	268	LEU	2.1
1	B	225	SER	2.1
1	B	507	LEU	2.0

## 6.2 Non-standard residues in protein, DNA, RNA chains [i](#)

There are no non-standard protein/DNA/RNA residues in this entry.

## 6.3 Carbohydrates [i](#)

There are no monosaccharides in this entry.

## 6.4 Ligands [i](#)

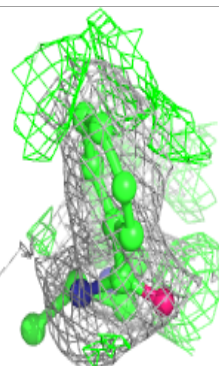
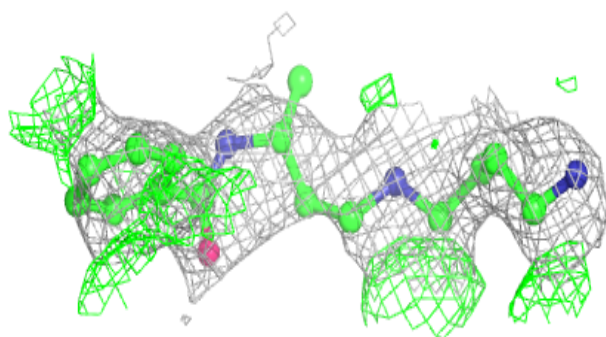
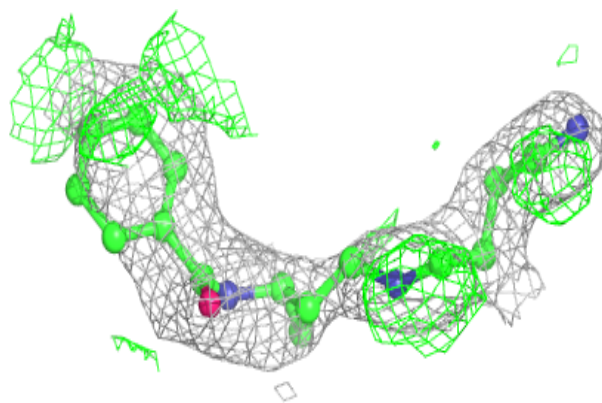
In the following table, the Atoms column lists the number of modelled atoms in the group and the number defined in the chemical component dictionary. The B-factors column lists the minimum, median, 95<sup>th</sup> percentile and maximum values of B factors of atoms in the group. The column labelled 'Q<0.9' lists the number of atoms with occupancy less than 0.9.

Mol	Type	Chain	Res	Atoms	RSCC	RSR	B-factors(Å <sup>2</sup> )	Q<0.9
3	SP9	B	518	19/19	0.75	0.29	53,70,75,75	0
2	FAD	B	517	53/53	0.94	0.15	47,52,55,57	0
2	FAD	A	517	53/53	0.96	0.17	27,35,41,44	0

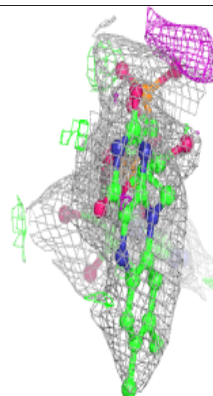
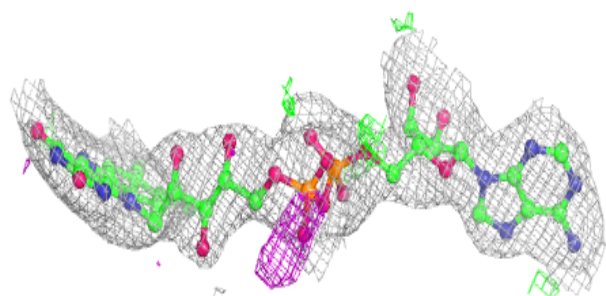
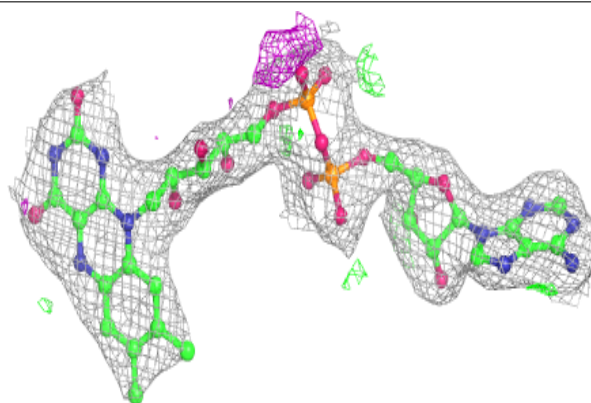
The following is a graphical depiction of the model fit to experimental electron density of all instances of the Ligand of Interest. In addition, ligands with molecular weight > 250 and outliers as shown on the geometry validation Tables will also be included. Each fit is shown from different orientation to approximate a three-dimensional view.

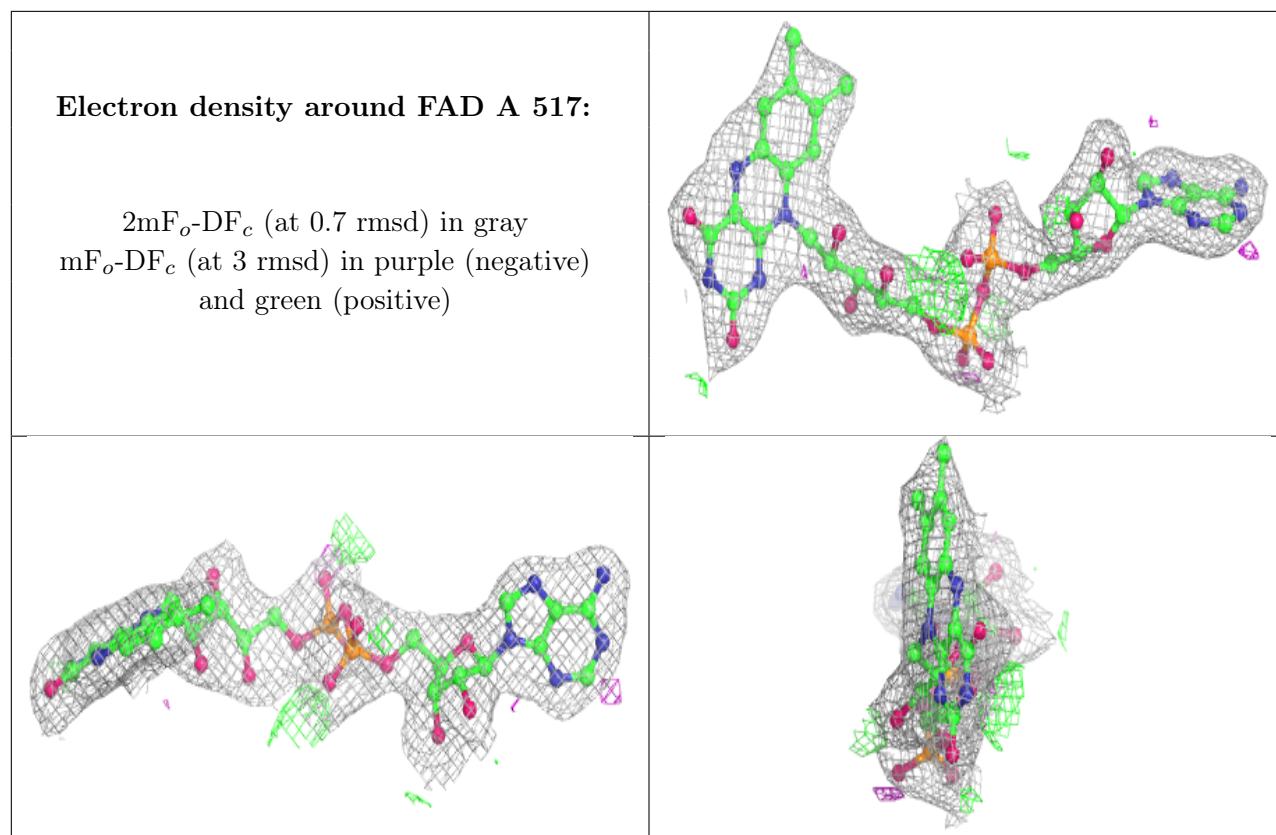
**Electron density around SP9 B 518:**

$2mF_o-DF_c$  (at 0.7 rmsd) in gray  
 $mF_o-DF_c$  (at 3 rmsd) in purple (negative)  
and green (positive)

**Electron density around FAD B 517:**

$2mF_o-DF_c$  (at 0.7 rmsd) in gray  
 $mF_o-DF_c$  (at 3 rmsd) in purple (negative)  
and green (positive)





## 6.5 Other polymers [i](#)

There are no such residues in this entry.