



Full wwPDB X-ray Structure Validation Report ⓘ

Mar 8, 2018 – 07:24 pm GMT

PDB ID : 3CNZ
Title : Structural dynamics of the microtubule binding and regulatory elements in the kinesin-like calmodulin binding protein
Authors : Vinogradova, M.V.; Malanina, G.G.; Reddy, V.; Reddy, A.S.N.; Fletterick, R.J.
Deposited on : 2008-03-26
Resolution : 2.90 Å(reported)

This is a Full wwPDB X-ray Structure Validation Report for a publicly released PDB entry.

We welcome your comments at validation@mail.wwpdb.org

A user guide is available at

<https://www.wwpdb.org/validation/2017/XrayValidationReportHelp>

with specific help available everywhere you see the ⓘ symbol.

The following versions of software and data (see [references ⓘ](#)) were used in the production of this report:

MolProbity : 4.02b-467
Mogul : 1.7.3 (157068), CSD as539be (2018)
Xtriage (Phenix) : 1.13
EDS : trunk30967
Percentile statistics : 20171227.v01 (using entries in the PDB archive December 27th 2017)
Refmac : 5.8.0158
CCP4 : 7.0 (Gargrove)
Ideal geometry (proteins) : Engh & Huber (2001)
Ideal geometry (DNA, RNA) : Parkinson et al. (1996)
Validation Pipeline (wwPDB-VP) : trunk30967

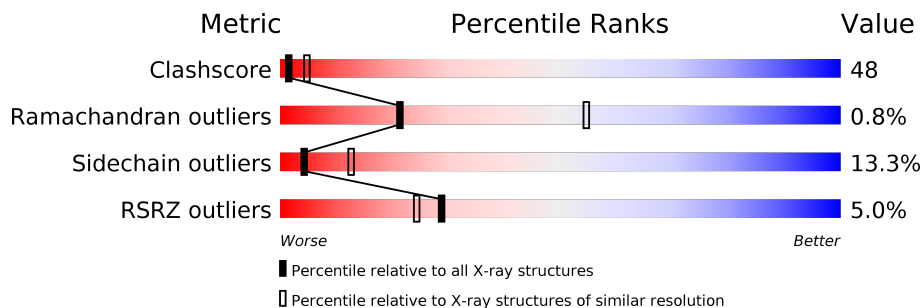
1 Overall quality at a glance

The following experimental techniques were used to determine the structure:

X-RAY DIFFRACTION

The reported resolution of this entry is 2.90 Å.

Percentile scores (ranging between 0-100) for global validation metrics of the entry are shown in the following graphic. The table shows the number of entries on which the scores are based.



Metric	Whole archive (#Entries)	Similar resolution (#Entries, resolution range(Å))
Clashscore	122126	1924 (2.90-2.90)
Ramachandran outliers	120053	1884 (2.90-2.90)
Sidechain outliers	120020	1886 (2.90-2.90)
RSRZ outliers	108989	1669 (2.90-2.90)

The table below summarises the geometric issues observed across the polymeric chains and their fit to the electron density. The red, orange, yellow and green segments on the lower bar indicate the fraction of residues that contain outliers for ≥ 3 , 2, 1 and 0 types of geometric quality criteria. A grey segment represents the fraction of residues that are not modelled. The numeric value for each fraction is indicated below the corresponding segment, with a dot representing fractions $\leq 5\%$. The upper red bar (where present) indicates the fraction of residues that have poor fit to the electron density. The numeric value is given above the bar.

Mol	Chain	Length	Quality of chain
1	A	369	
1	B	369	

2 Entry composition [i](#)

There are 4 unique types of molecules in this entry. The entry contains 5364 atoms, of which 0 are hydrogens and 0 are deuteriums.

In the tables below, the ZeroOcc column contains the number of atoms modelled with zero occupancy, the AltConf column contains the number of residues with at least one atom in alternate conformation and the Trace column contains the number of residues modelled with at most 2 atoms.

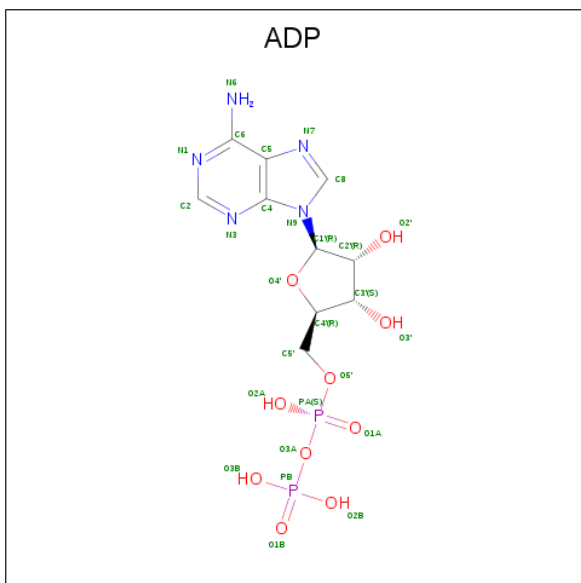
- Molecule 1 is a protein called Kinesin heavy chain-like protein.

Mol	Chain	Residues	Atoms					ZeroOcc	AltConf	Trace
			Total	C	N	O	S			
1	A	333	Total 2634	C 1650	N 462	O 511	S 11	0	0	0
1	B	331	Total 2624	C 1644	N 456	O 512	S 12	0	0	0

- Molecule 2 is MAGNESIUM ION (three-letter code: MG) (formula: Mg).

Mol	Chain	Residues	Atoms		ZeroOcc	AltConf
2	B	1	Total 1	Mg 1	0	0
2	A	1	Total 1	Mg 1	0	0

- Molecule 3 is ADENOSINE-5'-DIPHOSPHATE (three-letter code: ADP) (formula: $C_{10}H_{15}N_5O_{10}P_2$).



Mol	Chain	Residues	Atoms					ZeroOcc	AltConf
3	A	1	Total	C	N	O	P	0	0
			27	10	5	10	2		
3	B	1	Total	C	N	O	P	0	0
			27	10	5	10	2		

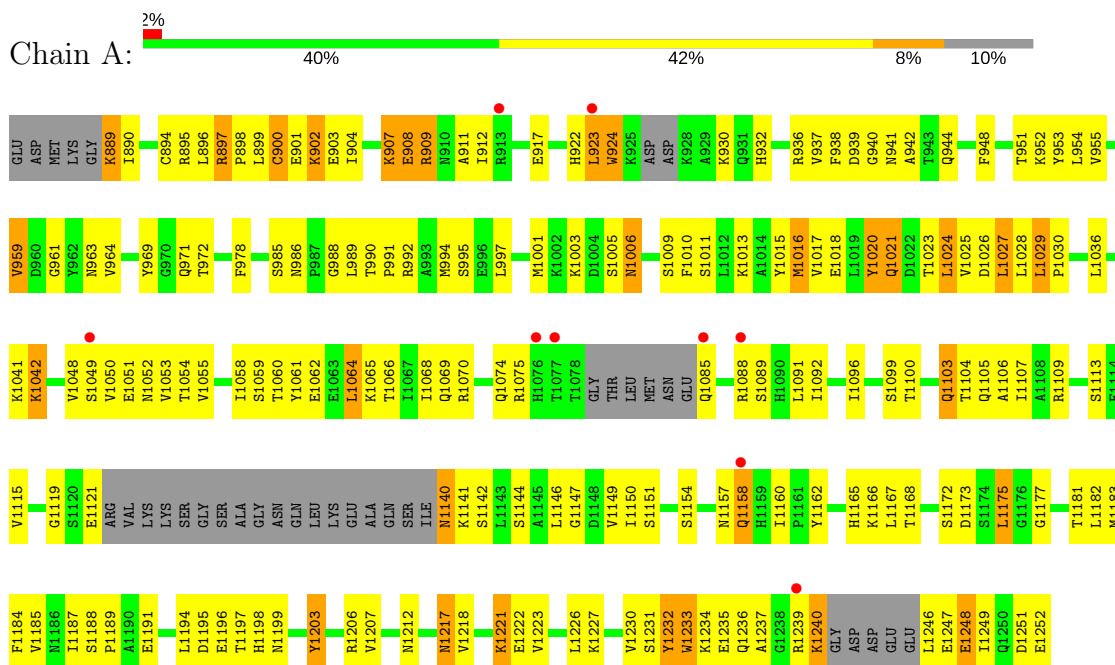
- Molecule 4 is water.

Mol	Chain	Residues	Atoms		ZeroOcc	AltConf
4	A	25	Total	O	0	0
			25	25		
4	B	25	Total	O	0	0
			25	25		

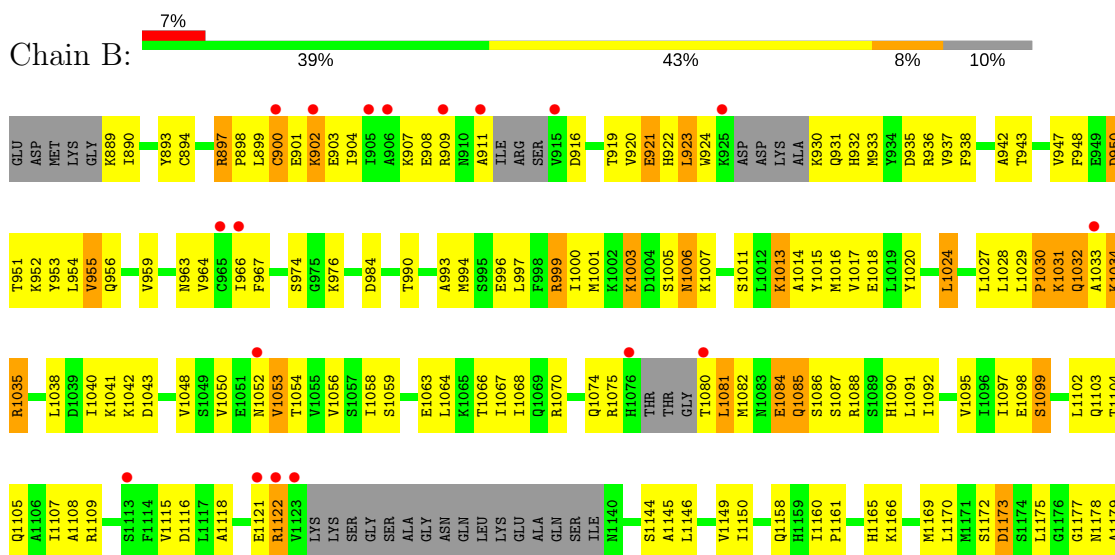
3 Residue-property plots [i](#)

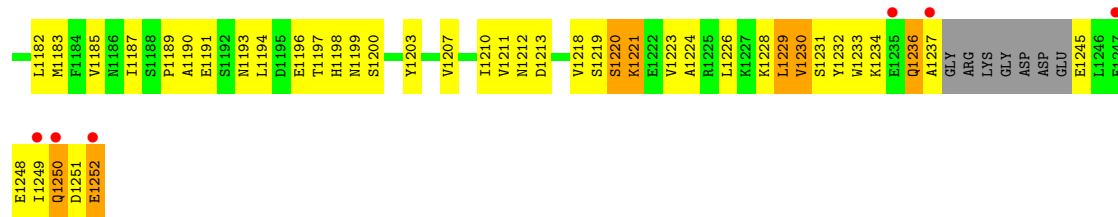
These plots are drawn for all protein, RNA and DNA chains in the entry. The first graphic for a chain summarises the proportions of the various outlier classes displayed in the second graphic. The second graphic shows the sequence view annotated by issues in geometry and electron density. Residues are color-coded according to the number of geometric quality criteria for which they contain at least one outlier: green = 0, yellow = 1, orange = 2 and red = 3 or more. A red dot above a residue indicates a poor fit to the electron density ($RSRZ > 2$). Stretches of 2 or more consecutive residues without any outlier are shown as a green connector. Residues present in the sample, but not in the model, are shown in grey.

- Molecule 1: Kinesin heavy chain-like protein



- Molecule 1: Kinesin heavy chain-like protein





4 Data and refinement statistics i

Property	Value	Source
Space group	P 21 21 21	Depositor
Cell constants a, b, c, α , β , γ	84.12Å 84.49Å 113.67Å 90.00° 90.00° 90.00°	Depositor
Resolution (Å)	24.10 – 2.90 24.10 – 2.89	Depositor EDS
% Data completeness (in resolution range)	90.6 (24.10-2.90) 90.3 (24.10-2.89)	Depositor EDS
R_{merge}	(Not available)	Depositor
R_{sym}	9.40	Depositor
$\langle I/\sigma(I) \rangle$ ¹	3.43 (at 2.89Å)	Xtrriage
Refinement program	CNS 1.2	Depositor
R, R_{free}	0.271 , 0.285 0.268 , (Not available)	Depositor DCC
R_{free} test set	No test flags present.	wwPDB-VP
Wilson B-factor (Å ²)	72.0	Xtrriage
Anisotropy	0.225	Xtrriage
Bulk solvent k_{sol} (e/Å ³), B_{sol} (Å ²)	0.23 , 39.1	EDS
L-test for twinning ²	$\langle L \rangle = 0.47$, $\langle L^2 \rangle = 0.31$	Xtrriage
Estimated twinning fraction	0.026 for k,h,-l	Xtrriage
F_o, F_c correlation	0.90	EDS
Total number of atoms	5364	wwPDB-VP
Average B, all atoms (Å ²)	90.0	wwPDB-VP

Xtrriage's analysis on translational NCS is as follows: *The largest off-origin peak in the Patterson function is 4.29% of the height of the origin peak. No significant pseudotranslation is detected.*

¹Intensities estimated from amplitudes.

²Theoretical values of $\langle |L| \rangle$, $\langle L^2 \rangle$ for acentric reflections are 0.5, 0.333 respectively for untwinned datasets, and 0.375, 0.2 for perfectly twinned datasets.

5 Model quality [i](#)

5.1 Standard geometry [i](#)

Bond lengths and bond angles in the following residue types are not validated in this section: MG, ADP

The Z score for a bond length (or angle) is the number of standard deviations the observed value is removed from the expected value. A bond length (or angle) with $|Z| > 5$ is considered an outlier worth inspection. RMSZ is the root-mean-square of all Z scores of the bond lengths (or angles).

Mol	Chain	Bond lengths		Bond angles	
		RMSZ	# $ Z > 5$	RMSZ	# $ Z > 5$
1	A	0.42	0/2669	0.75	4/3585 (0.1%)
1	B	0.43	0/2658	0.75	2/3571 (0.1%)
All	All	0.43	0/5327	0.75	6/7156 (0.1%)

There are no bond length outliers.

All (6) bond angle outliers are listed below:

Mol	Chain	Res	Type	Atoms	Z	Observed(°)	Ideal(°)
1	B	1032	GLN	N-CA-C	-5.41	96.40	111.00
1	A	1020	TYR	N-CA-C	5.39	125.55	111.00
1	A	1020	TYR	CB-CA-C	-5.31	99.78	110.40
1	B	1220	SER	CB-CA-C	-5.21	100.20	110.10
1	A	1237	ALA	N-CA-C	-5.10	97.24	111.00
1	A	902	LYS	N-CA-C	-5.09	97.26	111.00

There are no chirality outliers.

There are no planarity outliers.

5.2 Too-close contacts [i](#)

In the following table, the Non-H and H(model) columns list the number of non-hydrogen atoms and hydrogen atoms in the chain respectively. The H(added) column lists the number of hydrogen atoms added and optimized by MolProbity. The Clashes column lists the number of clashes within the asymmetric unit, whereas Symm-Clashes lists symmetry related clashes.

Mol	Chain	Non-H	H(model)	H(added)	Clashes	Symm-Clashes
1	A	2634	0	2665	265	0
1	B	2624	0	2642	273	0
2	A	1	0	0	0	0

Continued on next page...

Continued from previous page...

Mol	Chain	Non-H	H(model)	H(added)	Clashes	Symm-Clashes
2	B	1	0	0	0	0
3	A	27	0	12	0	0
3	B	27	0	12	1	0
4	A	25	0	0	2	0
4	B	25	0	0	8	0
All	All	5364	0	5331	516	0

The all-atom clashscore is defined as the number of clashes found per 1000 atoms (including hydrogen atoms). The all-atom clashscore for this structure is 48.

All (516) close contacts within the same asymmetric unit are listed below, sorted by their clash magnitude.

Atom-1	Atom-2	Interatomic distance (Å)	Clash overlap (Å)
1:B:953:TYR:CE1	1:B:954:LEU:HG	1.48	1.44
1:A:1235:GLU:HG2	1:A:1239:ARG:CD	1.52	1.40
1:A:1235:GLU:CG	1:A:1239:ARG:HD2	1.52	1.38
1:B:900:CYS:SG	1:B:902:LYS:HB2	1.86	1.16
1:B:1029:LEU:HD23	1:B:1033:ALA:CB	1.73	1.16
1:B:1050:VAL:HG12	1:B:1053:VAL:CG1	1.76	1.14
1:A:1239:ARG:HB3	1:A:1240:LYS:CB	1.77	1.13
1:B:1029:LEU:CD2	1:B:1033:ALA:HB1	1.77	1.13
1:B:1050:VAL:HG12	1:B:1053:VAL:HG12	1.17	1.11
1:B:1029:LEU:HD23	1:B:1033:ALA:HB1	1.18	1.10
1:A:1194:LEU:HD23	1:A:1194:LEU:O	1.49	1.10
1:B:1105:GLN:HB3	1:B:1221:LYS:HB2	1.34	1.09
1:A:1235:GLU:HA	1:A:1239:ARG:HG3	1.27	1.09
1:A:890:ILE:HG22	1:A:890:ILE:O	1.50	1.08
1:B:953:TYR:CE1	1:B:954:LEU:CG	2.36	1.07
1:A:1239:ARG:HE	1:A:1240:LYS:HG3	0.95	1.07
1:A:890:ILE:HG21	1:A:1207:VAL:HG12	1.33	1.06
1:A:1226:LEU:O	1:A:1230:VAL:HG13	1.56	1.04
1:A:1239:ARG:CB	1:A:1240:LYS:HB2	1.87	1.04
1:A:1020:TYR:CD2	1:A:1021:GLN:HG3	1.92	1.04
1:A:1234:LYS:HG2	1:B:1233:TRP:CD2	1.93	1.04
1:A:1248:GLU:OE2	1:A:1248:GLU:HA	1.56	1.03
1:B:1105:GLN:CB	1:B:1221:LYS:HB2	1.90	1.02
1:A:1239:ARG:NE	1:A:1240:LYS:HG3	1.73	1.01
1:A:1240:LYS:HE2	1:A:1240:LYS:O	1.58	1.01
1:A:1041:LYS:HD2	1:A:1051:GLU:OE2	1.60	1.01
1:A:1223:VAL:HG13	1:B:1226:LEU:HD11	1.43	1.00
1:A:923:LEU:H	1:A:923:LEU:HD23	1.25	0.99

Continued on next page...

Continued from previous page...

Atom-1	Atom-2	Interatomic distance (Å)	Clash overlap (Å)
1:B:1081:LEU:H	1:B:1081:LEU:HD23	1.26	0.98
1:A:1239:ARG:HE	1:A:1240:LYS:CG	1.77	0.97
1:B:1043:ASP:HB2	4:B:46:HOH:O	1.65	0.96
1:A:890:ILE:CG2	1:A:890:ILE:O	2.14	0.96
1:B:955:VAL:HG11	1:B:996:GLU:HB3	1.48	0.95
1:B:1029:LEU:CG	1:B:1033:ALA:HB1	1.95	0.95
1:B:1041:LYS:HE2	1:B:1248:GLU:OE2	1.67	0.94
1:B:955:VAL:HG11	1:B:996:GLU:CB	1.97	0.94
1:A:1232:TYR:HE1	1:A:1236:GLN:HE21	1.08	0.94
1:A:1107:ILE:O	1:A:1218:VAL:HG23	1.70	0.91
1:B:1085:GLN:HG3	1:B:1086:SER:N	1.86	0.90
1:B:953:TYR:CD1	1:B:954:LEU:HG	2.07	0.90
1:B:953:TYR:CD1	1:B:954:LEU:N	2.40	0.89
1:A:1239:ARG:HB3	1:A:1240:LYS:HB2	0.93	0.89
1:B:1081:LEU:H	1:B:1081:LEU:CD2	1.86	0.89
1:B:1105:GLN:HB3	1:B:1221:LYS:CB	2.04	0.88
1:A:1233:TRP:NE1	1:B:1234:LYS:HE2	1.90	0.86
1:B:1229:LEU:O	1:B:1233:TRP:HD1	1.57	0.86
1:B:923:LEU:HD13	1:B:924:TRP:H	1.39	0.86
1:A:1234:LYS:HD2	1:B:1233:TRP:CZ2	2.11	0.85
1:B:1063:GLU:O	1:B:1066:THR:HG22	1.75	0.85
1:B:919:THR:HA	1:B:932:HIS:O	1.77	0.85
1:B:920:VAL:HG22	1:B:932:HIS:HB2	1.58	0.85
1:B:1092:ILE:HG12	1:B:1115:VAL:HG22	1.60	0.84
1:B:1029:LEU:HB3	1:B:1033:ALA:HB2	1.58	0.83
1:B:994:MET:HG3	1:B:1068:ILE:CD1	2.09	0.83
1:A:1017:VAL:HG22	1:A:1024:LEU:HD22	1.60	0.83
1:A:1223:VAL:O	1:A:1227:LYS:HG3	1.79	0.82
1:B:953:TYR:HE1	1:B:954:LEU:HG	1.39	0.82
1:A:1233:TRP:CE2	1:B:1234:LYS:HE2	2.15	0.81
1:B:1031:LYS:O	1:B:1032:GLN:C	2.19	0.81
1:B:1220:SER:OG	1:B:1223:VAL:HG23	1.80	0.81
1:A:1196:GLU:HA	1:A:1199:ASN:HD22	1.46	0.80
1:A:1092:ILE:HG12	1:A:1115:VAL:HG22	1.61	0.80
1:A:890:ILE:CG2	1:A:1207:VAL:HG12	2.10	0.80
1:B:1050:VAL:CG1	1:B:1053:VAL:CG1	2.58	0.80
1:B:923:LEU:HD13	1:B:924:TRP:N	1.97	0.80
1:A:1062:GLU:O	1:A:1066:THR:HG23	1.81	0.80
1:B:1149:VAL:HG13	1:B:1160:ILE:HG22	1.64	0.80
1:B:1029:LEU:HD23	1:B:1033:ALA:HB3	1.64	0.79
1:A:1234:LYS:CD	1:B:1233:TRP:CZ2	2.65	0.79

Continued on next page...

Continued from previous page...

Atom-1	Atom-2	Interatomic distance (Å)	Clash overlap (Å)
1:A:896:LEU:HD22	1:A:912:ILE:HD12	1.63	0.79
1:A:889:LYS:HD3	1:A:889:LYS:O	1.81	0.79
1:B:999:ARG:HD3	1:B:1000:ILE:N	1.97	0.79
1:A:899:LEU:HB3	1:A:903:GLU:HG3	1.63	0.79
1:B:1048:VAL:HG22	1:B:1173:ASP:OD2	1.82	0.78
1:B:1105:GLN:CB	1:B:1221:LYS:CB	2.59	0.78
1:B:994:MET:HG3	1:B:1068:ILE:HD11	1.65	0.78
1:A:1235:GLU:HA	1:A:1239:ARG:CG	2.12	0.78
1:A:1105:GLN:HG3	4:A:12:HOH:O	1.83	0.77
1:A:1234:LYS:HD3	1:B:1233:TRP:CE2	2.20	0.77
1:A:1234:LYS:CD	1:B:1233:TRP:CE2	2.68	0.77
1:A:1053:VAL:HG22	1:A:1054:THR:N	1.99	0.77
1:A:1060:THR:HG22	1:A:1062:GLU:H	1.48	0.76
1:B:1038:LEU:CD1	4:B:20:HOH:O	2.32	0.76
1:A:994:MET:SD	1:A:1064:LEU:HD11	2.26	0.76
1:A:951:THR:HG23	1:A:1182:LEU:HD23	1.67	0.76
1:A:1006:ASN:HD22	1:A:1006:ASN:H	1.32	0.76
1:B:951:THR:HA	1:B:953:TYR:CE2	2.21	0.76
1:B:1035:ARG:CZ	1:B:1035:ARG:HB3	2.15	0.75
1:B:922:HIS:HD2	1:B:1194:LEU:HD21	1.50	0.75
1:A:1029:LEU:HD13	1:A:1030:PRO:HD2	1.68	0.75
1:B:920:VAL:CG2	1:B:932:HIS:HB2	2.16	0.75
1:B:1033:ALA:O	1:B:1034:LYS:HG2	1.86	0.74
1:A:1068:ILE:HD12	1:A:1069:GLN:N	2.02	0.74
1:A:1091:LEU:C	1:A:1091:LEU:HD23	2.07	0.74
1:A:1234:LYS:HG2	1:B:1233:TRP:CE3	2.22	0.74
1:B:920:VAL:HG22	1:B:932:HIS:CB	2.17	0.74
1:A:1020:TYR:HE1	1:A:1085:GLN:HG2	1.52	0.74
1:B:999:ARG:HH11	1:B:1000:ILE:HG12	1.51	0.74
1:A:899:LEU:CD2	1:A:1189:PRO:HG2	2.17	0.74
1:B:1196:GLU:HA	1:B:1199:ASN:HD22	1.53	0.73
1:A:1221:LYS:O	1:A:1221:LYS:HD3	1.88	0.73
1:A:912:ILE:HG21	1:A:1197:THR:HG21	1.70	0.73
1:B:1190:ALA:HB3	1:B:1193:ASN:HD22	1.54	0.73
1:A:1028:LEU:O	1:A:1054:THR:HG21	1.87	0.73
1:A:899:LEU:HB3	1:A:903:GLU:CG	2.19	0.72
1:B:1029:LEU:HD11	1:B:1054:THR:OG1	1.89	0.72
1:A:889:LYS:CD	1:A:889:LYS:O	2.37	0.72
1:B:955:VAL:HG11	1:B:996:GLU:HB2	1.71	0.72
1:A:922:HIS:HE1	1:A:932:HIS:HE1	1.38	0.72
1:B:1029:LEU:HB3	1:B:1033:ALA:CB	2.19	0.71

Continued on next page...

Continued from previous page...

Atom-1	Atom-2	Interatomic distance (Å)	Clash overlap (Å)
1:A:1248:GLU:OE2	1:A:1248:GLU:CA	2.36	0.71
1:B:1070:ARG:HB2	4:B:32:HOH:O	1.89	0.71
1:A:1232:TYR:O	1:A:1235:GLU:HG3	1.90	0.71
1:A:1246:LEU:N	1:A:1246:LEU:HD12	2.06	0.71
1:B:1105:GLN:CB	1:B:1221:LYS:HG3	2.21	0.71
1:A:912:ILE:HG12	1:A:1189:PRO:HA	1.71	0.71
1:A:924:TRP:HA	1:A:924:TRP:CE3	2.24	0.70
1:A:951:THR:HG23	1:A:1182:LEU:CD2	2.21	0.70
1:B:1050:VAL:HG11	1:B:1053:VAL:HB	1.73	0.70
1:B:1085:GLN:CG	1:B:1086:SER:N	2.53	0.70
1:A:922:HIS:CE1	1:A:932:HIS:HE1	2.09	0.70
1:B:922:HIS:CD2	1:B:1194:LEU:HD21	2.27	0.70
1:A:1020:TYR:HE1	1:A:1085:GLN:CG	2.05	0.69
1:A:923:LEU:H	1:A:923:LEU:CD2	2.02	0.69
1:A:924:TRP:HA	1:A:924:TRP:HE3	1.56	0.69
1:B:1236:GLN:O	1:B:1237:ALA:HB3	1.91	0.69
1:A:1017:VAL:HG21	1:A:1024:LEU:HD13	1.74	0.69
1:B:930:LYS:NZ	1:B:1198:HIS:HE1	1.91	0.69
1:A:1223:VAL:HG13	1:B:1226:LEU:CD1	2.20	0.69
1:B:1048:VAL:CG1	1:B:1172:SER:HB2	2.23	0.69
1:B:1105:GLN:HB3	1:B:1221:LYS:HG3	1.73	0.69
1:B:953:TYR:HE1	1:B:954:LEU:CG	1.96	0.69
1:B:1015:TYR:HA	1:B:1028:LEU:HD12	1.74	0.69
1:B:1105:GLN:HB3	1:B:1221:LYS:CG	2.22	0.69
1:A:1232:TYR:CD1	1:A:1232:TYR:C	2.65	0.68
1:B:990:THR:HG22	1:B:1068:ILE:HD13	1.74	0.68
1:A:1020:TYR:CD2	1:A:1021:GLN:CG	2.75	0.68
1:A:1149:VAL:HG13	1:A:1160:ILE:HG22	1.76	0.68
1:B:1048:VAL:HG11	1:B:1172:SER:HB2	1.73	0.68
1:B:1149:VAL:HG13	1:B:1160:ILE:CG2	2.23	0.68
1:A:1053:VAL:HG22	1:A:1054:THR:H	1.59	0.68
1:A:907:LYS:CB	1:A:907:LYS:NZ	2.57	0.67
1:A:899:LEU:HD21	1:A:1189:PRO:HG2	1.76	0.67
1:A:1239:ARG:HH21	1:A:1240:LYS:HD3	1.59	0.67
1:A:899:LEU:HB3	1:A:903:GLU:CB	2.24	0.67
1:B:1149:VAL:CG2	1:B:1161:PRO:O	2.43	0.67
1:B:1149:VAL:HG22	1:B:1161:PRO:O	1.95	0.67
1:B:1033:ALA:C	1:B:1034:LYS:HG2	2.15	0.67
1:B:953:TYR:HE1	1:B:954:LEU:CD2	2.07	0.67
1:A:1173:ASP:HA	1:A:1177:GLY:HA3	1.77	0.67
1:A:1194:LEU:C	1:A:1194:LEU:HD23	2.14	0.66

Continued on next page...

Continued from previous page...

Atom-1	Atom-2	Interatomic distance (Å)	Clash overlap (Å)
1:A:1226:LEU:C	1:A:1230:VAL:HG13	2.16	0.66
1:B:1034:LYS:HB2	1:B:1034:LYS:HZ2	1.60	0.66
1:B:1252:GLU:HG2	1:B:1252:GLU:OXT	1.93	0.66
1:A:1221:LYS:CD	1:A:1221:LYS:O	2.43	0.66
1:A:1230:VAL:HG12	1:B:1230:VAL:HG12	1.77	0.66
1:B:1221:LYS:HG2	1:B:1221:LYS:O	1.94	0.66
1:A:904:ILE:HA	1:A:907:LYS:HA	1.77	0.66
1:B:999:ARG:HD3	1:B:999:ARG:C	2.16	0.66
1:A:1234:LYS:HG2	1:B:1233:TRP:CE2	2.31	0.65
1:B:1190:ALA:HB3	1:B:1193:ASN:ND2	2.12	0.65
1:A:1020:TYR:CE1	1:A:1085:GLN:NE2	2.64	0.65
1:B:893:TYR:HD2	1:B:938:PHE:HE2	1.43	0.65
1:A:1149:VAL:HG13	1:A:1160:ILE:CG2	2.26	0.65
1:A:907:LYS:HB3	1:A:907:LYS:NZ	2.11	0.65
1:B:1233:TRP:O	1:B:1236:GLN:HB2	1.97	0.65
1:B:956:GLN:O	1:B:959:VAL:HG22	1.96	0.65
1:B:1029:LEU:CD1	1:B:1054:THR:OG1	2.45	0.64
1:B:903:GLU:OE2	1:B:1190:ALA:HB2	1.97	0.64
1:B:1191:GLU:O	1:B:1194:LEU:HB2	1.97	0.64
1:A:1232:TYR:HE1	1:A:1236:GLN:NE2	1.88	0.64
1:B:1029:LEU:CD2	1:B:1033:ALA:CB	2.53	0.64
1:B:1038:LEU:HD11	4:B:20:HOH:O	1.95	0.64
1:B:1033:ALA:O	1:B:1034:LYS:CG	2.45	0.64
1:A:909:ARG:HB2	1:A:909:ARG:HH11	1.63	0.64
1:A:1196:GLU:HA	1:A:1199:ASN:ND2	2.13	0.64
1:B:938:PHE:HB3	1:B:942:ALA:CB	2.28	0.64
1:B:1121:GLU:HG2	1:B:1122:ARG:N	2.13	0.63
1:A:1042:LYS:HD2	1:A:1247:GLU:OE1	1.98	0.63
1:B:1034:LYS:NZ	1:B:1034:LYS:HB2	2.14	0.63
1:B:1029:LEU:CB	1:B:1033:ALA:CB	2.76	0.63
1:A:1016:MET:HG2	1:A:1027:LEU:HB2	1.81	0.63
1:A:890:ILE:HG21	1:A:1207:VAL:CG1	2.21	0.63
1:A:1009:SER:OG	1:A:1100:THR:HB	1.99	0.62
1:A:1020:TYR:CE1	1:A:1085:GLN:HG2	2.34	0.62
1:B:959:VAL:HG12	1:B:1097:ILE:HD13	1.81	0.62
1:A:909:ARG:CG	1:A:909:ARG:HH11	2.13	0.62
1:A:1016:MET:HB3	1:A:1028:LEU:HG	1.82	0.62
1:B:1105:GLN:HB2	1:B:1221:LYS:CB	2.30	0.62
1:A:903:GLU:O	1:A:908:GLU:N	2.27	0.62
1:B:953:TYR:CE1	1:B:954:LEU:CD2	2.83	0.62
1:A:899:LEU:HB3	1:A:903:GLU:HB2	1.83	0.61

Continued on next page...

Continued from previous page...

Atom-1	Atom-2	Interatomic distance (Å)	Clash overlap (Å)
1:A:1060:THR:HG22	1:A:1061:TYR:N	2.15	0.61
1:B:889:LYS:HB2	1:B:1211:VAL:HA	1.83	0.61
1:B:955:VAL:O	1:B:955:VAL:HG12	2.00	0.61
1:A:1109:ARG:HG2	1:A:1109:ARG:HH11	1.66	0.60
1:A:1142:SER:HA	1:A:1165:HIS:CD2	2.36	0.60
1:B:1011:SER:HA	4:B:19:HOH:O	2.02	0.60
1:B:1034:LYS:O	1:B:1035:ARG:C	2.39	0.60
1:B:889:LYS:HB2	1:B:1211:VAL:HG13	1.84	0.60
1:B:1031:LYS:HD3	1:B:1032:GLN:H	1.65	0.60
1:B:1166:LYS:O	1:B:1170:LEU:HD23	2.01	0.60
1:B:954:LEU:HD22	1:B:964:VAL:HG13	1.82	0.60
1:A:1233:TRP:NE1	1:B:1234:LYS:CE	2.65	0.60
1:A:1239:ARG:CB	1:A:1240:LYS:CB	2.64	0.60
1:A:1105:GLN:HB2	1:A:1221:LYS:HE3	1.83	0.59
1:A:1105:GLN:CB	1:A:1221:LYS:HE3	2.32	0.59
1:B:1063:GLU:HA	1:B:1066:THR:HG22	1.83	0.59
1:A:1053:VAL:CG2	1:A:1054:THR:N	2.66	0.59
1:A:1109:ARG:NH1	1:A:1109:ARG:HG2	2.17	0.59
1:A:909:ARG:CB	1:A:909:ARG:HH11	2.16	0.59
1:A:907:LYS:HB3	1:A:907:LYS:HZ3	1.68	0.59
1:B:1220:SER:OG	1:B:1223:VAL:CG2	2.51	0.59
1:B:897:ARG:HD3	1:B:974:SER:O	2.02	0.59
1:A:988:GLY:O	1:A:992:ARG:HD2	2.03	0.59
1:A:1222:GLU:O	1:A:1226:LEU:HD23	2.03	0.58
1:A:1240:LYS:CE	1:A:1240:LYS:O	2.45	0.58
1:B:1029:LEU:HG	1:B:1033:ALA:HB1	1.84	0.58
1:B:1105:GLN:CB	1:B:1221:LYS:CG	2.80	0.58
1:A:1042:LYS:HD2	1:A:1247:GLU:HB2	1.84	0.58
1:A:1085:GLN:O	1:A:1088:ARG:N	2.34	0.58
1:B:999:ARG:HD2	1:B:1000:ILE:HG13	1.85	0.58
1:A:899:LEU:CB	1:A:903:GLU:HG3	2.32	0.58
1:A:1075:ARG:NH1	1:A:1089:SER:O	2.36	0.57
1:B:1034:LYS:NZ	1:B:1034:LYS:CB	2.66	0.57
1:B:921:GLU:OE1	1:B:931:GLN:NE2	2.36	0.57
1:A:896:LEU:HD22	1:A:912:ILE:CD1	2.34	0.57
1:B:966:ILE:HG23	1:B:1182:LEU:HB3	1.87	0.57
1:B:893:TYR:HD2	1:B:938:PHE:CE2	2.22	0.57
1:B:924:TRP:CH2	1:B:1198:HIS:CD2	2.92	0.57
1:B:890:ILE:HD12	1:B:1210:ILE:HB	1.87	0.57
1:A:1029:LEU:HD13	1:A:1030:PRO:CD	2.34	0.57
1:A:1232:TYR:HA	1:A:1235:GLU:HG3	1.87	0.57

Continued on next page...

Continued from previous page...

Atom-1	Atom-2	Interatomic distance (Å)	Clash overlap (Å)
1:B:1081:LEU:N	1:B:1081:LEU:HD23	2.08	0.57
1:A:1015:TYR:HA	1:A:1028:LEU:HD12	1.86	0.56
1:A:1109:ARG:O	1:A:1217:ASN:ND2	2.38	0.56
1:A:1235:GLU:OE2	1:A:1239:ARG:NH1	2.38	0.56
1:A:1053:VAL:CG2	1:A:1054:THR:H	2.18	0.56
1:B:903:GLU:HB3	1:B:908:GLU:HG3	1.88	0.56
1:A:901:GLU:HA	1:A:901:GLU:OE1	2.05	0.56
1:B:1203:TYR:O	1:B:1207:VAL:HG23	2.05	0.56
1:B:1013:LYS:HA	1:B:1056:VAL:O	2.05	0.56
1:B:1230:VAL:CG2	1:B:1231:SER:N	2.69	0.56
1:B:1041:LYS:CE	1:B:1248:GLU:OE2	2.50	0.56
1:B:990:THR:O	1:B:994:MET:HG2	2.06	0.56
1:A:1020:TYR:CE1	1:A:1085:GLN:CD	2.79	0.56
1:A:1041:LYS:O	1:A:1049:SER:N	2.35	0.56
1:A:1239:ARG:CG	1:A:1240:LYS:HG3	2.36	0.56
1:A:908:GLU:OE1	1:A:908:GLU:HA	2.05	0.56
1:B:1006:ASN:C	1:B:1007:LYS:HD3	2.25	0.56
1:B:1081:LEU:N	1:B:1081:LEU:CD2	2.62	0.56
1:A:1165:HIS:ND1	1:A:1166:LYS:N	2.54	0.56
1:B:1048:VAL:HG21	1:B:1170:LEU:O	2.06	0.56
1:B:943:THR:O	1:B:947:VAL:HG23	2.06	0.55
1:A:1222:GLU:O	1:A:1226:LEU:CD2	2.54	0.55
1:B:1029:LEU:CG	1:B:1033:ALA:CB	2.79	0.55
1:B:1229:LEU:O	1:B:1233:TRP:CD1	2.48	0.55
1:B:1165:HIS:ND1	1:B:1166:LYS:N	2.55	0.55
1:A:1020:TYR:CE1	1:A:1085:GLN:CG	2.90	0.55
1:B:1121:GLU:HG2	1:B:1122:ARG:H	1.72	0.55
1:A:1162:TYR:HE2	1:A:1252:GLU:OXT	1.90	0.55
1:A:1246:LEU:CD1	1:A:1246:LEU:N	2.70	0.55
1:A:1223:VAL:CG1	1:B:1226:LEU:HD11	2.29	0.55
1:A:1018:GLU:HG3	1:A:1089:SER:OG	2.07	0.54
1:A:1021:GLN:O	1:A:1165:HIS:HE1	1.91	0.54
1:A:954:LEU:HB3	1:A:964:VAL:HG11	1.89	0.54
1:A:961:GLY:O	1:A:1217:ASN:OD1	2.26	0.54
1:B:1236:GLN:O	1:B:1237:ALA:CB	2.54	0.54
1:B:1122:ARG:HH22	1:B:1144:SER:HA	1.73	0.54
1:A:1234:LYS:CG	1:B:1233:TRP:CE2	2.90	0.54
1:A:899:LEU:HD23	1:A:1189:PRO:HG2	1.90	0.54
1:A:917:GLU:O	1:A:936:ARG:HD2	2.08	0.54
1:B:1088:ARG:O	1:B:1088:ARG:HG2	2.07	0.54
1:B:930:LYS:NZ	1:B:1198:HIS:CE1	2.75	0.54

Continued on next page...

Continued from previous page...

Atom-1	Atom-2	Interatomic distance (Å)	Clash overlap (Å)
1:B:893:TYR:HE2	1:B:950:ASP:HB3	1.72	0.53
1:A:897:ARG:HG3	1:A:898:PRO:O	2.08	0.53
1:A:1232:TYR:O	1:A:1235:GLU:N	2.38	0.53
1:B:1050:VAL:CG1	1:B:1053:VAL:HB	2.38	0.53
1:B:919:THR:OG1	1:B:933:MET:HG2	2.09	0.53
1:A:1017:VAL:HG23	1:A:1025:VAL:O	2.08	0.53
1:A:938:PHE:HB3	1:A:942:ALA:HB3	1.89	0.53
1:B:1031:LYS:O	1:B:1033:ALA:N	2.42	0.53
1:B:1029:LEU:CB	1:B:1033:ALA:HB1	2.38	0.53
1:B:1090:HIS:CE1	1:B:1118:ALA:H	2.27	0.52
1:A:1162:TYR:CE1	1:A:1172:SER:HA	2.44	0.52
1:B:924:TRP:CZ3	1:B:1198:HIS:CG	2.98	0.52
1:B:1091:LEU:HD23	1:B:1092:ILE:N	2.23	0.52
1:A:1231:SER:HB3	1:A:1240:LYS:HD2	1.92	0.52
1:A:963:ASN:ND2	1:A:1173:ASP:OD2	2.41	0.52
1:B:1145:ALA:O	1:B:1149:VAL:HG23	2.10	0.52
1:B:938:PHE:HB3	1:B:942:ALA:HB3	1.91	0.52
1:A:1021:GLN:O	1:A:1165:HIS:CE1	2.63	0.52
1:A:1018:GLU:CG	1:A:1089:SER:OG	2.58	0.52
1:A:1091:LEU:C	1:A:1091:LEU:CD2	2.75	0.52
1:A:1196:GLU:HA	1:A:1196:GLU:OE1	2.09	0.52
1:A:1239:ARG:HB3	1:A:1240:LYS:CG	2.39	0.52
1:A:948:PHE:O	1:A:952:LYS:HB2	2.10	0.52
1:A:1006:ASN:N	1:A:1006:ASN:HD22	2.03	0.51
1:A:1157:ASN:O	1:A:1160:ILE:HD11	2.10	0.51
1:B:930:LYS:HZ2	1:B:1198:HIS:HE1	1.57	0.51
1:B:935:ASP:O	1:B:936:ARG:HB2	2.10	0.51
1:B:967:PHE:CE2	1:B:1183:MET:HB2	2.45	0.51
1:A:1203:TYR:O	1:A:1207:VAL:HG23	2.10	0.51
1:B:1109:ARG:NH1	1:B:1109:ARG:HG2	2.24	0.51
1:B:1050:VAL:O	1:B:1053:VAL:HG12	2.11	0.51
1:A:1226:LEU:HB2	1:B:1226:LEU:HD13	1.92	0.51
1:B:1232:TYR:CD1	1:B:1232:TYR:C	2.82	0.51
1:B:1177:GLY:O	1:B:1212:ASN:HB3	2.11	0.51
1:B:1245:GLU:OE1	1:B:1245:GLU:C	2.48	0.51
1:A:1049:SER:OG	1:A:1246:LEU:CD2	2.59	0.50
1:A:1181:THR:HG22	1:A:1182:LEU:N	2.26	0.50
1:B:1063:GLU:CA	1:B:1066:THR:HG22	2.41	0.50
1:B:1028:LEU:HD21	1:B:1067:ILE:HG23	1.93	0.50
1:B:893:TYR:CD2	1:B:938:PHE:HE2	2.25	0.50
1:B:1050:VAL:CG1	1:B:1053:VAL:CB	2.89	0.50

Continued on next page...

Continued from previous page...

Atom-1	Atom-2	Interatomic distance (Å)	Clash overlap (Å)
1:A:1177:GLY:O	1:A:1212:ASN:HB3	2.10	0.50
1:B:953:TYR:OH	1:B:1182:LEU:HD22	2.10	0.50
1:A:1027:LEU:HD11	1:A:1074:GLN:NE2	2.26	0.50
1:B:954:LEU:HD22	1:B:964:VAL:CG1	2.42	0.50
1:A:1020:TYR:HD2	1:A:1021:GLN:HG3	1.65	0.50
1:A:896:LEU:CD2	1:A:912:ILE:HD12	2.39	0.50
1:A:990:THR:HB	1:A:991:PRO:CD	2.42	0.50
1:A:897:ARG:HH21	1:A:900:CYS:HB3	1.77	0.50
1:B:894:CYS:HA	1:B:1185:VAL:HG13	1.93	0.50
1:B:1121:GLU:CG	1:B:1122:ARG:N	2.75	0.50
1:B:920:VAL:O	1:B:932:HIS:N	2.44	0.50
1:B:955:VAL:CG1	1:B:955:VAL:O	2.59	0.50
1:A:912:ILE:CG2	1:A:1197:THR:HG21	2.39	0.49
1:B:1252:GLU:CG	1:B:1252:GLU:OXT	2.60	0.49
1:A:1206:ARG:O	1:A:1207:VAL:C	2.50	0.49
1:A:1217:ASN:N	1:A:1217:ASN:OD1	2.45	0.49
1:A:900:CYS:O	1:A:901:GLU:HB2	2.12	0.49
1:A:944:GLN:HG2	1:A:986:ASN:ND2	2.28	0.49
1:A:1248:GLU:O	1:A:1249:ILE:C	2.49	0.49
1:A:909:ARG:HG3	1:A:909:ARG:NH1	2.27	0.49
1:B:1146:LEU:O	1:B:1150:ILE:HG13	2.12	0.49
1:B:1178:ASN:HA	1:B:1213:ASP:O	2.12	0.49
1:A:1064:LEU:O	1:A:1064:LEU:HD22	2.12	0.49
1:A:1187:ILE:HG22	1:A:1188:SER:N	2.28	0.49
1:A:1060:THR:CG2	1:A:1061:TYR:N	2.75	0.49
1:B:1187:ILE:HG23	1:B:1197:THR:HG23	1.95	0.49
1:B:923:LEU:CD1	1:B:924:TRP:N	2.73	0.49
1:B:996:GLU:HB3	4:B:16:HOH:O	2.12	0.49
1:A:1058:ILE:HG21	1:A:1064:LEU:HB2	1.95	0.49
1:B:1109:ARG:HG2	1:B:1109:ARG:HH11	1.78	0.49
1:A:1187:ILE:HG21	1:A:1197:THR:HG23	1.95	0.48
1:B:1018:GLU:HB2	1:B:1027:LEU:HD11	1.94	0.48
1:A:1234:LYS:HD3	1:B:1233:TRP:NE1	2.28	0.48
1:A:930:LYS:HD3	1:A:1198:HIS:HE1	1.78	0.48
1:B:1063:GLU:C	1:B:1066:THR:HG22	2.33	0.48
1:A:1025:VAL:HG23	1:A:1027:LEU:HD23	1.95	0.48
1:A:1239:ARG:CD	1:A:1240:LYS:HG3	2.43	0.48
1:A:890:ILE:CG1	1:A:1212:ASN:HD21	2.26	0.48
1:A:1146:LEU:HA	1:A:1168:THR:HG22	1.94	0.48
1:A:1226:LEU:H	1:A:1226:LEU:HD22	1.78	0.48
1:B:955:VAL:HG12	1:B:1000:ILE:HD12	1.96	0.48

Continued on next page...

Continued from previous page...

Atom-1	Atom-2	Interatomic distance (Å)	Clash overlap (Å)
1:A:1158:GLN:HE21	1:A:1158:GLN:CA	2.25	0.48
1:A:896:LEU:O	1:A:940:GLY:HA2	2.12	0.48
1:A:1017:VAL:CG2	1:A:1024:LEU:HD22	2.36	0.48
1:B:930:LYS:HZ2	1:B:1198:HIS:CE1	2.31	0.48
1:B:994:MET:SD	1:B:1064:LEU:HD11	2.54	0.48
1:A:909:ARG:CG	1:A:909:ARG:NH1	2.74	0.48
1:B:899:LEU:O	1:B:901:GLU:N	2.47	0.48
1:A:1036:LEU:HD13	1:A:1052:ASN:ND2	2.29	0.48
1:A:969:TYR:HB3	1:A:1183:MET:HE2	1.96	0.48
1:B:1169:MET:HE2	1:B:1249:ILE:HG13	1.96	0.48
1:B:1035:ARG:NH2	4:B:33:HOH:O	2.33	0.47
1:B:1103:GLN:HG3	1:B:1104:THR:N	2.29	0.47
1:A:1068:ILE:C	1:A:1068:ILE:HD12	2.33	0.47
1:A:1147:GLY:O	1:A:1150:ILE:HB	2.15	0.47
1:B:1024:LEU:CD1	1:B:1040:ILE:HD11	2.44	0.47
1:B:924:TRP:CH2	1:B:1198:HIS:CG	3.03	0.47
1:B:954:LEU:O	1:B:956:GLN:N	2.48	0.47
1:B:1221:LYS:CG	1:B:1221:LYS:O	2.61	0.47
1:B:1007:LYS:O	1:B:1102:LEU:HG	2.15	0.47
1:B:911:ALA:CB	1:B:1189:PRO:O	2.63	0.47
1:B:1105:GLN:C	1:B:1221:LYS:HB2	2.35	0.47
1:A:907:LYS:HB2	1:A:907:LYS:HZ2	1.80	0.46
1:B:1185:VAL:HG22	1:B:1187:ILE:HD11	1.97	0.46
1:B:930:LYS:HZ3	1:B:1198:HIS:HE1	1.63	0.46
1:A:1234:LYS:CG	1:B:1233:TRP:CD2	2.84	0.46
1:A:1233:TRP:CZ2	1:B:1234:LYS:HE2	2.50	0.46
1:A:1103:GLN:HG3	1:A:1104:THR:N	2.29	0.46
1:A:894:CYS:HB3	1:A:937:VAL:HG22	1.96	0.46
1:B:1099:SER:HB3	1:B:1108:ALA:HB3	1.97	0.46
1:A:1061:TYR:O	1:A:1065:LYS:HB2	2.15	0.46
1:B:1121:GLU:CG	1:B:1122:ARG:H	2.28	0.46
1:A:911:ALA:HB2	1:A:1191:GLU:HA	1.96	0.46
1:B:1250:GLN:HG2	1:B:1252:GLU:H	1.79	0.46
1:A:1140:ASN:C	1:A:1140:ASN:OD1	2.53	0.46
1:B:963:ASN:HD22	1:B:1179:ALA:HB2	1.80	0.46
1:A:1234:LYS:HD2	1:B:1233:TRP:CH2	2.48	0.46
1:B:954:LEU:HB3	1:B:964:VAL:HG11	1.97	0.46
1:B:1172:SER:OG	1:B:1249:ILE:HD12	2.16	0.46
1:B:900:CYS:O	1:B:901:GLU:HB2	2.16	0.46
1:A:1050:VAL:O	1:A:1050:VAL:HG13	2.15	0.46
1:A:1151:SER:O	1:A:1154:SER:HB3	2.15	0.46

Continued on next page...

Continued from previous page...

Atom-1	Atom-2	Interatomic distance (Å)	Clash overlap (Å)
1:A:1194:LEU:C	1:A:1194:LEU:CD2	2.83	0.46
1:A:900:CYS:SG	1:A:902:LYS:HB2	2.56	0.46
1:A:1029:LEU:HD12	1:A:1030:PRO:O	2.16	0.46
1:A:1041:LYS:CD	1:A:1051:GLU:OE2	2.48	0.46
1:A:1053:VAL:HG13	1:A:1055:VAL:HG23	1.97	0.46
1:B:1038:LEU:HG	1:B:1052:ASN:O	2.15	0.46
1:B:1121:GLU:HG3	1:B:1196:GLU:OE2	2.17	0.45
1:A:1185:VAL:HG22	1:A:1187:ILE:HD11	1.98	0.45
1:B:999:ARG:CD	1:B:1000:ILE:N	2.74	0.45
1:B:919:THR:CA	1:B:932:HIS:O	2.58	0.45
1:B:1016:MET:HG3	1:B:1091:LEU:HD21	1.99	0.45
1:A:1001:MET:HG2	1:A:1010:PHE:CD1	2.51	0.45
1:A:1218:VAL:HG22	1:A:1218:VAL:O	2.16	0.45
1:A:1227:LYS:O	1:A:1230:VAL:HG22	2.17	0.45
1:B:1084:GLU:HG3	1:B:1084:GLU:O	2.16	0.45
1:B:1091:LEU:HD23	1:B:1092:ILE:H	1.81	0.45
1:A:1020:TYR:HB3	1:A:1023:THR:HB	1.98	0.45
1:A:897:ARG:NH2	1:A:900:CYS:HB3	2.31	0.45
1:A:955:VAL:O	1:A:959:VAL:HG13	2.16	0.45
1:B:1040:ILE:HG21	1:B:1169:MET:HB3	1.98	0.45
1:A:1105:GLN:CG	4:A:12:HOH:O	2.53	0.45
1:A:907:LYS:CB	1:A:907:LYS:HZ2	2.27	0.45
1:B:1232:TYR:CD1	1:B:1232:TYR:O	2.70	0.45
1:A:1233:TRP:HE1	1:B:1234:LYS:HE2	1.79	0.45
1:B:897:ARG:HB2	1:B:898:PRO:HD2	1.98	0.45
1:A:938:PHE:HB3	1:A:942:ALA:CB	2.47	0.45
1:B:1220:SER:HG	1:B:1223:VAL:HG23	1.79	0.45
1:B:1099:SER:O	1:B:1107:ILE:HA	2.17	0.45
1:A:890:ILE:HD11	1:A:1175:LEU:HD12	1.98	0.45
1:B:920:VAL:HG12	1:B:937:VAL:HG11	1.98	0.45
1:B:953:TYR:HE1	1:B:954:LEU:HD21	1.80	0.45
1:A:1001:MET:O	1:A:1005:SER:HB2	2.17	0.44
1:A:1181:THR:CG2	1:A:1182:LEU:N	2.81	0.44
1:B:1194:LEU:O	1:B:1194:LEU:HD23	2.17	0.44
1:B:1122:ARG:HD2	1:B:1122:ARG:HA	1.75	0.44
1:A:1092:ILE:CG1	1:A:1115:VAL:HG22	2.41	0.44
1:A:1239:ARG:HG2	1:A:1240:LYS:HG3	1.99	0.44
1:B:893:TYR:CD2	1:B:938:PHE:CE2	3.04	0.44
1:A:922:HIS:HE1	1:A:932:HIS:CE1	2.28	0.44
1:B:916:ASP:OD1	1:B:919:THR:N	2.51	0.44
1:A:1235:GLU:CB	1:A:1239:ARG:HD2	2.35	0.44

Continued on next page...

Continued from previous page...

Atom-1	Atom-2	Interatomic distance (Å)	Clash overlap (Å)
1:B:997:LEU:O	1:B:1001:MET:HG3	2.18	0.44
1:B:1035:ARG:NH1	1:B:1035:ARG:HB3	2.33	0.44
1:B:1104:THR:O	1:B:1105:GLN:HB2	2.16	0.44
1:B:911:ALA:HB3	1:B:1189:PRO:O	2.18	0.44
1:B:1050:VAL:HG12	1:B:1050:VAL:O	2.16	0.44
1:A:1140:ASN:O	1:A:1141:LYS:C	2.56	0.43
1:A:1246:LEU:C	1:A:1247:GLU:HG3	2.37	0.43
1:B:1024:LEU:HD12	1:B:1040:ILE:HD11	1.99	0.43
1:B:1105:GLN:CG	1:B:1221:LYS:HG3	2.48	0.43
1:B:1224:ALA:O	1:B:1228:LYS:HD3	2.18	0.43
1:A:1092:ILE:HG23	1:A:1115:VAL:HG22	1.99	0.43
1:A:1026:ASP:OD2	1:A:1026:ASP:C	2.56	0.43
1:A:1104:THR:HG22	1:A:1106:ALA:HB2	2.00	0.43
1:A:909:ARG:HG3	1:A:909:ARG:HH11	1.82	0.43
1:B:1006:ASN:O	1:B:1007:LYS:HD3	2.18	0.43
1:B:1197:THR:O	1:B:1200:SER:HB2	2.18	0.43
1:A:1042:LYS:O	1:A:1246:LEU:HA	2.19	0.43
1:A:1042:LYS:CD	1:A:1247:GLU:OE1	2.67	0.43
1:A:951:THR:CG2	1:A:1182:LEU:HD23	2.44	0.43
1:B:1063:GLU:O	1:B:1066:THR:CG2	2.59	0.43
1:B:1230:VAL:O	1:B:1234:LYS:HG3	2.19	0.43
1:B:996:GLU:HA	1:B:999:ARG:HG3	2.00	0.43
1:A:1185:VAL:HG13	1:A:1185:VAL:O	2.19	0.42
1:B:1122:ARG:HH22	1:B:1144:SER:CA	2.32	0.42
1:B:1187:ILE:CG2	1:B:1197:THR:HG23	2.48	0.42
1:B:1230:VAL:HG22	1:B:1231:SER:N	2.34	0.42
1:A:989:LEU:HD11	1:A:1184:PHE:CE1	2.54	0.42
1:B:976:LYS:HE2	4:B:28:HOH:O	2.19	0.42
1:A:1091:LEU:HD23	1:A:1092:ILE:N	2.35	0.42
1:A:899:LEU:HD21	1:A:1189:PRO:CG	2.47	0.42
1:B:1011:SER:HB3	1:B:1098:GLU:HB3	2.01	0.42
1:A:972:THR:N	1:A:1121:GLU:OE2	2.42	0.42
1:B:1028:LEU:HD23	1:B:1028:LEU:HA	1.73	0.42
1:A:1230:VAL:CG1	1:B:1230:VAL:HG12	2.49	0.42
1:B:1020:TYR:OH	1:B:1088:ARG:HD3	2.20	0.42
1:A:1027:LEU:HD23	1:A:1027:LEU:N	2.33	0.42
1:B:1014:ALA:HB2	1:B:1095:VAL:HG22	2.01	0.42
1:B:1024:LEU:HA	1:B:1024:LEU:HD23	1.81	0.42
1:A:1146:LEU:HD22	1:A:1167:LEU:HD21	2.01	0.42
1:A:954:LEU:HD22	1:A:954:LEU:H	1.85	0.42
1:B:936:ARG:HA	1:B:936:ARG:HD2	1.85	0.42

Continued on next page...

Continued from previous page...

Atom-1	Atom-2	Interatomic distance (Å)	Clash overlap (Å)
1:A:899:LEU:O	1:A:901:GLU:N	2.53	0.42
1:B:897:ARG:HD2	3:B:600:ADP:C8	2.54	0.42
1:B:952:LYS:O	1:B:955:VAL:HB	2.19	0.42
1:A:1001:MET:HG2	1:A:1010:PHE:CE1	2.55	0.41
1:A:1158:GLN:NE2	1:A:1158:GLN:HA	2.35	0.41
1:A:1195:ASP:O	1:A:1196:GLU:C	2.57	0.41
1:B:1196:GLU:OE1	1:B:1196:GLU:HA	2.19	0.41
1:B:948:PHE:HZ	1:B:993:ALA:HA	1.84	0.41
1:A:1020:TYR:CZ	1:A:1085:GLN:NE2	2.88	0.41
1:B:1033:ALA:C	1:B:1034:LYS:CG	2.86	0.41
1:A:1096:ILE:HD12	1:A:1096:ILE:N	2.35	0.41
1:B:1075:ARG:NH2	1:B:1116:ASP:O	2.54	0.41
1:B:1158:GLN:HA	1:B:1158:GLN:NE2	2.34	0.41
1:B:1105:GLN:HG3	1:B:1221:LYS:HG3	2.02	0.41
1:B:1229:LEU:HA	1:B:1229:LEU:HD22	1.82	0.41
1:A:953:TYR:CE1	1:A:954:LEU:HD13	2.56	0.41
1:A:1048:VAL:O	1:A:1048:VAL:HG23	2.20	0.41
1:B:1058:ILE:HG22	1:B:1059:SER:N	2.36	0.41
1:B:1030:PRO:HG2	1:B:1031:LYS:H	1.86	0.41
1:B:1086:SER:OG	1:B:1087:SER:N	2.53	0.41
1:A:897:ARG:HB2	1:A:898:PRO:HD2	2.03	0.41
1:B:889:LYS:CB	1:B:1211:VAL:HA	2.50	0.41
1:A:904:ILE:C	1:A:907:LYS:H	2.24	0.41
1:A:939:ASP:OD1	1:A:941:ASN:HB2	2.21	0.41
1:A:1203:TYR:CE2	1:A:1206:ARG:NH1	2.89	0.40
1:B:994:MET:CG	1:B:1064:LEU:HD11	2.51	0.40
1:A:1049:SER:OG	1:A:1246:LEU:HD23	2.20	0.40
1:A:890:ILE:CD1	1:A:1175:LEU:HD12	2.51	0.40
1:B:1085:GLN:CG	1:B:1086:SER:H	2.33	0.40
1:B:921:GLU:OE2	1:B:930:LYS:O	2.39	0.40
1:A:912:ILE:CG1	1:A:1189:PRO:HA	2.46	0.40
1:A:907:LYS:HG3	1:A:907:LYS:O	2.21	0.40
1:B:999:ARG:NH1	1:B:1003:LYS:HZ1	2.19	0.40
1:B:1080:THR:N	1:B:1081:LEU:HD22	2.36	0.40
1:A:1085:GLN:O	1:A:1088:ARG:C	2.60	0.40
1:A:1240:LYS:HE2	1:A:1240:LYS:C	2.33	0.40
1:A:895:ARG:HH22	1:A:978:PHE:HE1	1.68	0.40

There are no symmetry-related clashes.

5.3 Torsion angles [i](#)

5.3.1 Protein backbone [i](#)

In the following table, the Percentiles column shows the percent Ramachandran outliers of the chain as a percentile score with respect to all X-ray entries followed by that with respect to entries of similar resolution.

The Analysed column shows the number of residues for which the backbone conformation was analysed, and the total number of residues.

Mol	Chain	Analysed	Favoured	Allowed	Outliers	Percentiles	
1	A	323/369 (88%)	280 (87%)	41 (13%)	2 (1%)	27	61
1	B	319/369 (86%)	278 (87%)	38 (12%)	3 (1%)	19	52
All	All	642/738 (87%)	558 (87%)	79 (12%)	5 (1%)	21	54

All (5) Ramachandran outliers are listed below:

Mol	Chain	Res	Type
1	B	955	VAL
1	A	900	CYS
1	B	900	CYS
1	B	1030	PRO
1	A	1119	GLY

5.3.2 Protein sidechains [i](#)

In the following table, the Percentiles column shows the percent sidechain outliers of the chain as a percentile score with respect to all X-ray entries followed by that with respect to entries of similar resolution.

The Analysed column shows the number of residues for which the sidechain conformation was analysed, and the total number of residues.

Mol	Chain	Analysed	Rotameric	Outliers	Percentiles	
1	A	297/326 (91%)	257 (86%)	40 (14%)	4	12
1	B	297/326 (91%)	258 (87%)	39 (13%)	4	13
All	All	594/652 (91%)	515 (87%)	79 (13%)	4	13

All (79) residues with a non-rotameric sidechain are listed below:

Mol	Chain	Res	Type
1	A	889	LYS

Continued on next page...

Continued from previous page...

Mol	Chain	Res	Type
1	A	897	ARG
1	A	907	LYS
1	A	908	GLU
1	A	909	ARG
1	A	923	LEU
1	A	924	TRP
1	A	959	VAL
1	A	971	GLN
1	A	985	SER
1	A	995	SER
1	A	997	LEU
1	A	1003	LYS
1	A	1006	ASN
1	A	1011	SER
1	A	1013	LYS
1	A	1016	MET
1	A	1021	GLN
1	A	1024	LEU
1	A	1027	LEU
1	A	1029	LEU
1	A	1042	LYS
1	A	1059	SER
1	A	1064	LEU
1	A	1070	ARG
1	A	1099	SER
1	A	1103	GLN
1	A	1113	SER
1	A	1140	ASN
1	A	1144	SER
1	A	1158	GLN
1	A	1175	LEU
1	A	1203	TYR
1	A	1217	ASN
1	A	1221	LYS
1	A	1232	TYR
1	A	1233	TRP
1	A	1240	LYS
1	A	1248	GLU
1	A	1251	ASP
1	B	897	ARG
1	B	902	LYS
1	B	904	ILE

Continued on next page...

Continued from previous page...

Mol	Chain	Res	Type
1	B	907	LYS
1	B	909	ARG
1	B	921	GLU
1	B	923	LEU
1	B	950	ASP
1	B	984	ASP
1	B	999	ARG
1	B	1003	LYS
1	B	1005	SER
1	B	1006	ASN
1	B	1013	LYS
1	B	1017	VAL
1	B	1024	LEU
1	B	1031	LYS
1	B	1034	LYS
1	B	1035	ARG
1	B	1042	LYS
1	B	1053	VAL
1	B	1074	GLN
1	B	1081	LEU
1	B	1082	MET
1	B	1084	GLU
1	B	1085	GLN
1	B	1099	SER
1	B	1122	ARG
1	B	1173	ASP
1	B	1175	LEU
1	B	1218	VAL
1	B	1219	SER
1	B	1221	LYS
1	B	1229	LEU
1	B	1230	VAL
1	B	1236	GLN
1	B	1250	GLN
1	B	1251	ASP
1	B	1252	GLU

Some sidechains can be flipped to improve hydrogen bonding and reduce clashes. All (23) such sidechains are listed below:

Mol	Chain	Res	Type
1	A	922	HIS
1	A	931	GLN

Continued on next page...

Continued from previous page...

Mol	Chain	Res	Type
1	A	932	HIS
1	A	956	GLN
1	A	1006	ASN
1	A	1103	GLN
1	A	1105	GLN
1	A	1157	ASN
1	A	1158	GLN
1	A	1198	HIS
1	A	1199	ASN
1	B	922	HIS
1	B	932	HIS
1	B	971	GLN
1	B	1006	ASN
1	B	1032	GLN
1	B	1074	GLN
1	B	1103	GLN
1	B	1157	ASN
1	B	1158	GLN
1	B	1193	ASN
1	B	1198	HIS
1	B	1199	ASN

5.3.3 RNA [i](#)

There are no RNA molecules in this entry.

5.4 Non-standard residues in protein, DNA, RNA chains [i](#)

There are no non-standard protein/DNA/RNA residues in this entry.

5.5 Carbohydrates [i](#)

There are no carbohydrates in this entry.

5.6 Ligand geometry [i](#)

Of 4 ligands modelled in this entry, 2 are monoatomic - leaving 2 for Mogul analysis.

In the following table, the Counts columns list the number of bonds (or angles) for which Mogul statistics could be retrieved, the number of bonds (or angles) that are observed in the model and the number of bonds (or angles) that are defined in the Chemical Component Dictionary. The

Link column lists molecule types, if any, to which the group is linked. The Z score for a bond length (or angle) is the number of standard deviations the observed value is removed from the expected value. A bond length (or angle) with $|Z| > 2$ is considered an outlier worth inspection. RMSZ is the root-mean-square of all Z scores of the bond lengths (or angles).

Mol	Type	Chain	Res	Link	Bond lengths			Bond angles		
					Counts	RMSZ	# Z > 2	Counts	RMSZ	# Z > 2
3	ADP	A	600	-	25,29,29	0.98	1 (4%)	25,45,45	1.95	5 (20%)
3	ADP	B	600	2	25,29,29	1.00	1 (4%)	25,45,45	1.95	5 (20%)

In the following table, the Chirals column lists the number of chiral outliers, the number of chiral centers analysed, the number of these observed in the model and the number defined in the Chemical Component Dictionary. Similar counts are reported in the Torsion and Rings columns. '2' means no outliers of that kind were identified.

Mol	Type	Chain	Res	Link	Chirals	Torsions	Rings
3	ADP	A	600	-	-	0/12/32/32	0/3/3/3
3	ADP	B	600	2	-	0/12/32/32	0/3/3/3

All (2) bond length outliers are listed below:

Mol	Chain	Res	Type	Atoms	Z	Observed(Å)	Ideal(Å)
3	A	600	ADP	C2-N1	2.95	1.39	1.33
3	B	600	ADP	C2-N1	3.40	1.40	1.33

All (10) bond angle outliers are listed below:

Mol	Chain	Res	Type	Atoms	Z	Observed(°)	Ideal(°)
3	B	600	ADP	N3-C2-N1	-6.66	123.16	128.86
3	A	600	ADP	N3-C2-N1	-6.46	123.33	128.86
3	B	600	ADP	C5-C6-N1	-2.09	113.37	119.70
3	A	600	ADP	C5-C6-N1	-2.07	113.43	119.70
3	B	600	ADP	C5-C6-N6	2.25	125.06	120.47
3	A	600	ADP	C5-C6-N6	2.64	125.85	120.47
3	A	600	ADP	C2-N1-C6	2.86	123.61	118.75
3	B	600	ADP	C2-N1-C6	2.87	123.62	118.75
3	A	600	ADP	C4'-O4'-C1'	3.40	113.37	109.83
3	B	600	ADP	C4'-O4'-C1'	3.63	113.61	109.83

There are no chirality outliers.

There are no torsion outliers.

There are no ring outliers.

1 monomer is involved in 1 short contact:

Mol	Chain	Res	Type	Clashes	Symm-Clashes
3	B	600	ADP	1	0

5.7 Other polymers [i](#)

There are no such residues in this entry.

5.8 Polymer linkage issues [i](#)

There are no chain breaks in this entry.

6 Fit of model and data

6.1 Protein, DNA and RNA chains

In the following table, the column labelled ‘#RSRZ > 2’ contains the number (and percentage) of RSRZ outliers, followed by percent RSRZ outliers for the chain as percentile scores relative to all X-ray entries and entries of similar resolution. The OWAB column contains the minimum, median, 95th percentile and maximum values of the occupancy-weighted average B-factor per residue. The column labelled ‘Q < 0.9’ lists the number of (and percentage) of residues with an average occupancy less than 0.9.

Mol	Chain	Analysed	<RSRZ>	#RSRZ>2	OWAB(Å ²)	Q<0.9
1	A	333/369 (90%)	-0.04	9 (2%) 54 50	40, 75, 114, 144	0
1	B	331/369 (89%)	0.38	24 (7%) 15 11	50, 99, 152, 168	0
All	All	664/738 (89%)	0.17	33 (4%) 29 24	40, 84, 140, 168	0

All (33) RSRZ outliers are listed below:

Mol	Chain	Res	Type	RSRZ
1	B	1080	THR	5.0
1	B	1252	GLU	4.5
1	B	911	ALA	4.5
1	B	1123	VAL	4.1
1	B	1033	ALA	3.7
1	B	1076	HIS	3.6
1	B	1235	GLU	3.4
1	A	923	LEU	3.4
1	A	1088	ARG	3.3
1	B	905	ILE	3.1
1	B	902	LYS	3.1
1	A	1077	THR	3.0
1	B	1250	GLN	2.9
1	B	1237	ALA	2.9
1	A	913	ARG	2.8
1	B	1247	GLU	2.7
1	A	1076	HIS	2.7
1	B	906	ALA	2.7
1	B	1113	SER	2.7
1	B	1122	ARG	2.6
1	B	1249	ILE	2.5
1	B	900	CYS	2.5
1	B	1052	ASN	2.4
1	B	965	CYS	2.4

Continued on next page...

Continued from previous page...

Mol	Chain	Res	Type	RSRZ
1	B	925	LYS	2.3
1	B	909	ARG	2.3
1	A	1085	GLN	2.2
1	A	1158	GLN	2.2
1	A	1049	SER	2.2
1	B	966	ILE	2.1
1	B	915	VAL	2.1
1	B	1121	GLU	2.1
1	A	1239	ARG	2.0

6.2 Non-standard residues in protein, DNA, RNA chains [i](#)

There are no non-standard protein/DNA/RNA residues in this entry.

6.3 Carbohydrates [i](#)

There are no carbohydrates in this entry.

6.4 Ligands [i](#)

In the following table, the Atoms column lists the number of modelled atoms in the group and the number defined in the chemical component dictionary. The B-factors column lists the minimum, median, 95th percentile and maximum values of B factors of atoms in the group. The column labelled 'Q< 0.9' lists the number of atoms with occupancy less than 0.9.

Mol	Type	Chain	Res	Atoms	RSCC	RSR	B-factors(Å ²)	Q<0.9
2	MG	B	601	1/1	0.86	0.09	59,59,59,59	0
3	ADP	B	600	27/27	0.94	0.17	70,84,91,94	0
3	ADP	A	600	27/27	0.96	0.13	51,63,70,73	0
2	MG	A	601	1/1	0.97	0.07	42,42,42,42	0

6.5 Other polymers [i](#)

There are no such residues in this entry.