



Full wwPDB X-ray Structure Validation Report ⓘ

Dec 15, 2024 – 12:21 AM EST

PDB ID : 1COV
Title : COXSACKIEVIRUS B3 COAT PROTEIN
Authors : Muckelbauer, J.K.; Rossmann, M.G.
Deposited on : 1994-10-19
Resolution : 3.50 Å(reported)

This is a Full wwPDB X-ray Structure Validation Report for a publicly released PDB entry.

We welcome your comments at validation@mail.wwpdb.org

A user guide is available at

<https://www.wwpdb.org/validation/2017/XrayValidationReportHelp>

with specific help available everywhere you see the ⓘ symbol.

The types of validation reports are described at

<http://www.wwpdb.org/validation/2017/FAQs#types>.

The following versions of software and data (see [references ⓘ](#)) were used in the production of this report:

MolProbity : 4.02b-467
Mogul : 2022.3.0, CSD as543be (2022)
Xtriage (Phenix) : 1.21
EDS : 3.0
buster-report : 1.1.7 (2018)
Percentile statistics : 20231227.v01 (using entries in the PDB archive December 27th 2023)
CCP4 : 9.0.004 (Gargrove)
Density-Fitness : 1.0.11
Ideal geometry (proteins) : Engh & Huber (2001)
Ideal geometry (DNA, RNA) : Parkinson et al. (1996)
Validation Pipeline (wwPDB-VP) : 2.40

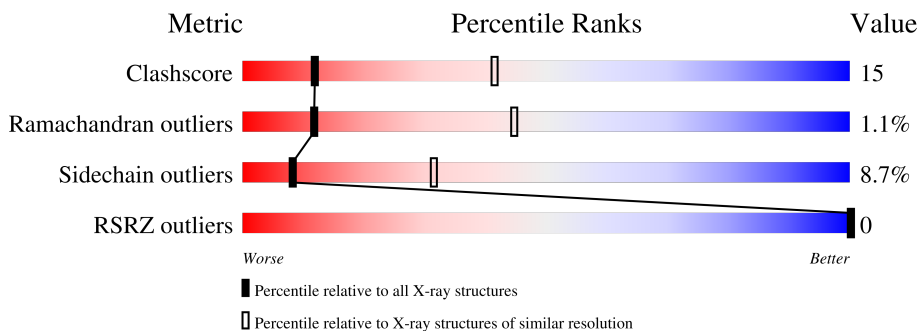
1 Overall quality at a glance

The following experimental techniques were used to determine the structure:

X-RAY DIFFRACTION

The reported resolution of this entry is 3.50 Å.

Percentile scores (ranging between 0-100) for global validation metrics of the entry are shown in the following graphic. The table shows the number of entries on which the scores are based.



Metric	Whole archive (#Entries)	Similar resolution (#Entries, resolution range(Å))
Clashscore	180529	1045 (3.54-3.46)
Ramachandran outliers	177936	1032 (3.54-3.46)
Sidechain outliers	177891	1033 (3.54-3.46)
RSRZ outliers	164620	1093 (3.56-3.44)

The table below summarises the geometric issues observed across the polymeric chains and their fit to the electron density. The red, orange, yellow and green segments of the lower bar indicate the fraction of residues that contain outliers for ≥ 3 , 2, 1 and 0 types of geometric quality criteria respectively. A grey segment represents the fraction of residues that are not modelled. The numeric value for each fraction is indicated below the corresponding segment, with a dot representing fractions $\leq 5\%$.

Mol	Chain	Length	Quality of chain
1	1	281	63% 30% . .
2	2	263	62% 31% 5% .
3	3	238	69% 25% 5%
4	4	68	51% 24% 6% 19%

The following table lists non-polymeric compounds, carbohydrate monomers and non-standard residues in protein, DNA, RNA chains that are outliers for geometric or electron-density-fit criteria:

Mol	Type	Chain	Res	Chirality	Geometry	Clashes	Electron density
5	PLM	1	282	-	-	X	-

2 Entry composition [i](#)

There are 6 unique types of molecules in this entry. The entry contains 6409 atoms, of which 0 are hydrogens and 0 are deuteriums.

In the tables below, the ZeroOcc column contains the number of atoms modelled with zero occupancy, the AltConf column contains the number of residues with at least one atom in alternate conformation and the Trace column contains the number of residues modelled with at most 2 atoms.

- Molecule 1 is a protein called COXSACKIEVIRUS COAT PROTEIN.

Mol	Chain	Residues	Atoms					ZeroOcc	AltConf	Trace
			Total	C	N	O	S			
1	1	269	2135	1346	375	406	8	0	0	0

- Molecule 2 is a protein called COXSACKIEVIRUS COAT PROTEIN.

Mol	Chain	Residues	Atoms					ZeroOcc	AltConf	Trace
			Total	C	N	O	S			
2	2	256	1973	1247	335	375	16	0	0	0

There are 2 discrepancies between the modelled and reference sequences:

Chain	Residue	Modelled	Actual	Comment	Reference
2	151	THR	SER	conflict	UNP Q66282
2	245	VAL	ILE	conflict	UNP Q66282

- Molecule 3 is a protein called COXSACKIEVIRUS COAT PROTEIN.

Mol	Chain	Residues	Atoms					ZeroOcc	AltConf	Trace
			Total	C	N	O	S			
3	3	238	1837	1174	294	352	17	0	0	0

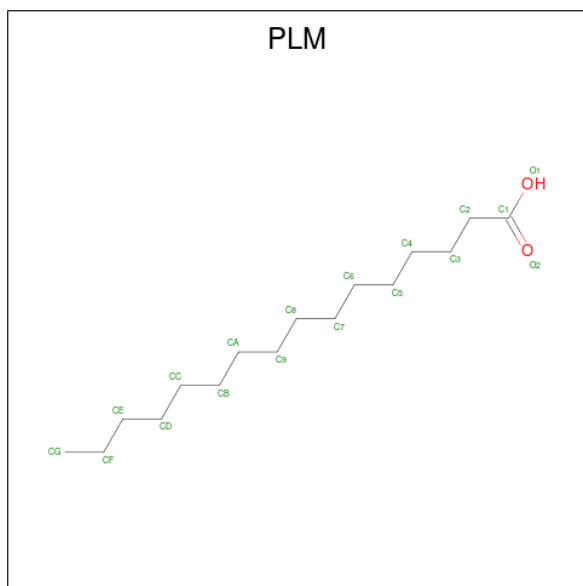
There is a discrepancy between the modelled and reference sequences:

Chain	Residue	Modelled	Actual	Comment	Reference
3	234	GLU	GLN	conflict	UNP Q66282

- Molecule 4 is a protein called COXSACKIEVIRUS COAT PROTEIN.

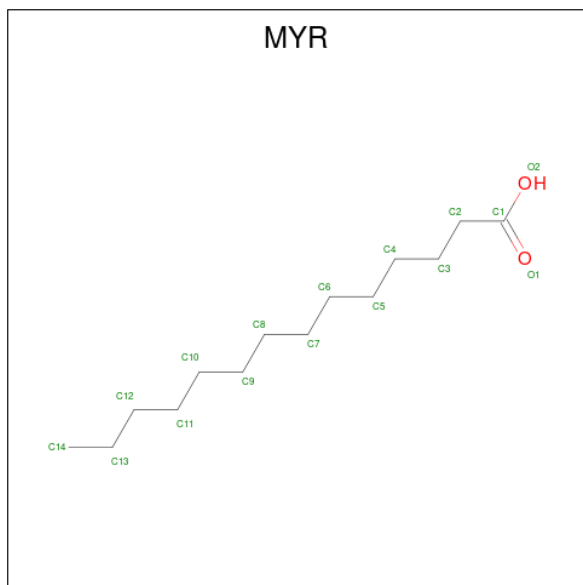
Mol	Chain	Residues	Atoms					ZeroOcc	AltConf	Trace
			Total	C	N	O	S			
4	4	55	431	268	74	88	1	0	0	0

- Molecule 5 is PALMITIC ACID (three-letter code: PLM) (formula: $C_{16}H_{32}O_2$).



Mol	Chain	Residues	Atoms		ZeroOcc	AltConf	
5	1	1	Total	C	O	0	0
			18	16	2		

- Molecule 6 is MYRISTIC ACID (three-letter code: MYR) (formula: $C_{14}H_{28}O_2$).

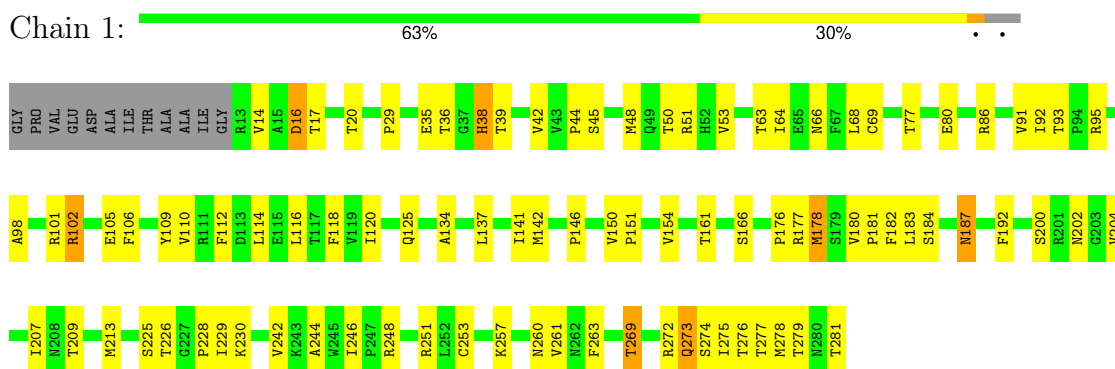


Mol	Chain	Residues	Atoms		ZeroOcc	AltConf	
6	4	1	Total	C	O	0	0
			15	14	1		

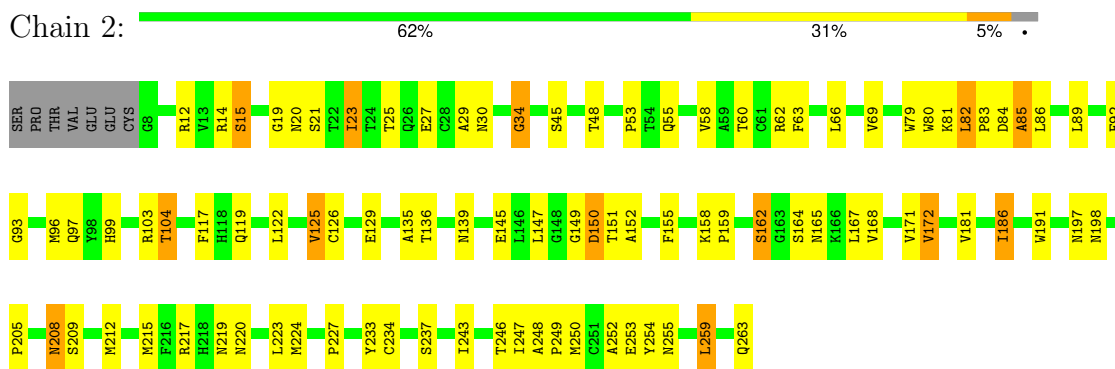
3 Residue-property plots [i](#)

These plots are drawn for all protein, RNA, DNA and oligosaccharide chains in the entry. The first graphic for a chain summarises the proportions of the various outlier classes displayed in the second graphic. The second graphic shows the sequence view annotated by issues in geometry. Residues are color-coded according to the number of geometric quality criteria for which they contain at least one outlier: green = 0, yellow = 1, orange = 2 and red = 3 or more. Stretches of 2 or more consecutive residues without any outlier are shown as a green connector. Residues present in the sample, but not in the model, are shown in grey.

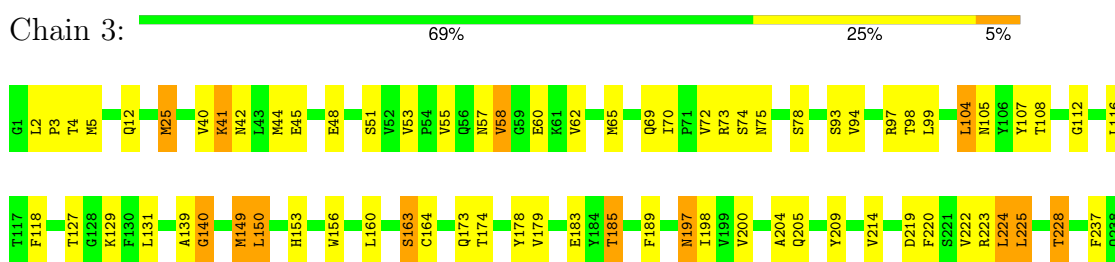
- Molecule 1: COXSACKIEVIRUS COAT PROTEIN



- Molecule 2: COXSACKIEVIRUS COAT PROTEIN

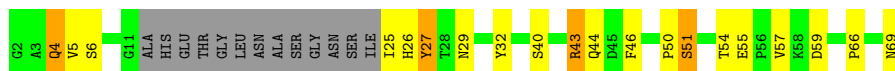


- Molecule 3: COXSACKIEVIRUS COAT PROTEIN



- Molecule 4: COXSACKIEVIRUS COAT PROTEIN





4 Data and refinement statistics

Property	Value	Source
Space group	P 1 21 1	Depositor
Cell constants a, b, c, α , β , γ	574.62Å 302.07Å 521.61Å 90.00° 107.70° 90.00°	Depositor
Resolution (Å)	10.00 – 3.50 10.00 – 3.50	Depositor EDS
% Data completeness (in resolution range)	55.0 (10.00-3.50) 59.1 (10.00-3.50)	Depositor EDS
R_{merge}	(Not available)	Depositor
R_{sym}	(Not available)	Depositor
$\langle I/\sigma(I) \rangle$ ¹	7.41 (at 3.52Å)	Xtrriage
Refinement program	X-PLOR	Depositor
R, R_{free}	0.264 , (Not available) 0.252 , (Not available)	Depositor DCC
R_{free} test set	No test flags present.	wwPDB-VP
Wilson B-factor (Å ²)	21.0	Xtrriage
Anisotropy	0.030	Xtrriage
Bulk solvent k_{sol} (e/Å ³), B_{sol} (Å ²)	0.22 , 69.4	EDS
L-test for twinning ²	$\langle L \rangle = 0.35$, $\langle L^2 \rangle = 0.17$	Xtrriage
Estimated twinning fraction	No twinning to report.	Xtrriage
F_o, F_c correlation	0.05	EDS
Total number of atoms	6409	wwPDB-VP
Average B, all atoms (Å ²)	17.0	wwPDB-VP

Xtrriage's analysis on translational NCS is as follows: *The analyses of the Patterson function reveals a significant off-origin peak that is 30.57 % of the origin peak, indicating pseudo-translational symmetry. The chance of finding a peak of this or larger height randomly in a structure without pseudo-translational symmetry is equal to 1.2796e-03.*

¹Intensities estimated from amplitudes.

²Theoretical values of $\langle |L| \rangle$, $\langle L^2 \rangle$ for acentric reflections are 0.5, 0.333 respectively for untwinned datasets, and 0.375, 0.2 for perfectly twinned datasets.

5 Model quality i

5.1 Standard geometry i

Bond lengths and bond angles in the following residue types are not validated in this section: MYR, PLM

The Z score for a bond length (or angle) is the number of standard deviations the observed value is removed from the expected value. A bond length (or angle) with $|Z| > 5$ is considered an outlier worth inspection. RMSZ is the root-mean-square of all Z scores of the bond lengths (or angles).

Mol	Chain	Bond lengths		Bond angles	
		RMSZ	# $ Z > 5$	RMSZ	# $ Z > 5$
1	1	0.53	0/2194	0.78	0/2994
2	2	0.55	0/2025	0.84	1/2770 (0.0%)
3	3	0.56	0/1888	0.81	2/2573 (0.1%)
4	4	0.82	1/438 (0.2%)	0.85	0/590
All	All	0.56	1/6545 (0.0%)	0.81	3/8927 (0.0%)

Chiral center outliers are detected by calculating the chiral volume of a chiral center and verifying if the center is modelled as a planar moiety or with the opposite hand. A planarity outlier is detected by checking planarity of atoms in a peptide group, atoms in a mainchain group or atoms of a sidechain that are expected to be planar.

Mol	Chain	#Chirality outliers	#Planarity outliers
4	4	0	1

All (1) bond length outliers are listed below:

Mol	Chain	Res	Type	Atoms	Z	Observed(Å)	Ideal(Å)
4	4	50	PRO	C-N	10.67	1.58	1.34

All (3) bond angle outliers are listed below:

Mol	Chain	Res	Type	Atoms	Z	Observed(°)	Ideal(°)
3	3	149	MET	CB-CG-SD	-6.44	93.07	112.40
3	3	225	LEU	CA-CB-CG	6.27	129.72	115.30
2	2	82	LEU	N-CA-C	5.27	125.23	111.00

There are no chirality outliers.

All (1) planarity outliers are listed below:

Mol	Chain	Res	Type	Group
4	4	51	SER	Mainchain

5.2 Too-close contacts [i](#)

In the following table, the Non-H and H(model) columns list the number of non-hydrogen atoms and hydrogen atoms in the chain respectively. The H(added) column lists the number of hydrogen atoms added and optimized by MolProbity. The Clashes column lists the number of clashes within the asymmetric unit, whereas Symm-Clashes lists symmetry-related clashes.

Mol	Chain	Non-H	H(model)	H(added)	Clashes	Symm-Clashes
1	1	2135	0	2069	81	0
2	2	1973	0	1906	61	0
3	3	1837	0	1766	64	0
4	4	431	0	417	24	0
5	1	18	0	31	9	0
6	4	15	0	27	2	0
All	All	6409	0	6216	195	0

The all-atom clashscore is defined as the number of clashes found per 1000 atoms (including hydrogen atoms). The all-atom clashscore for this structure is 15.

All (195) close contacts within the same asymmetric unit are listed below, sorted by their clash magnitude.

Atom-1	Atom-2	Interatomic distance (Å)	Clash overlap (Å)
4:4:27:TYR:CD1	4:4:27:TYR:O	1.81	1.34
4:4:25:ILE:CG2	4:4:26:HIS:H	1.61	1.13
4:4:25:ILE:HG22	4:4:26:HIS:H	0.99	1.09
4:4:25:ILE:HG22	4:4:26:HIS:N	1.60	1.08
1:1:116:LEU:HD11	5:1:282:PLM:HC2	1.41	1.00
4:4:27:TYR:O	4:4:27:TYR:HD1	1.45	0.97
1:1:14:VAL:HG13	3:3:219:ASP:HA	1.47	0.94
1:1:204:VAL:HB	1:1:209:THR:HG22	1.57	0.86
3:3:53:VAL:HG21	3:3:214:VAL:HG23	1.59	0.84
2:2:20:ASN:HD22	2:2:62:ARG:HE	1.21	0.84
2:2:12:ARG:NH2	3:3:160:LEU:HD11	1.95	0.81
1:1:116:LEU:CD1	5:1:282:PLM:HC2	2.10	0.81
4:4:27:TYR:CD1	4:4:27:TYR:C	2.54	0.80
1:1:278:MET:HE2	3:3:189:PHE:HD1	1.48	0.77
3:3:75:ASN:H	3:3:197:ASN:ND2	1.84	0.76
2:2:259:LEU:HD23	2:2:259:LEU:H	1.53	0.74
2:2:165:ASN:HB2	2:2:167:LEU:HG	1.69	0.73

Continued on next page...

Continued from previous page...

Atom-1	Atom-2	Interatomic distance (Å)	Clash overlap (Å)
1:1:66:ASN:OD1	4:4:43:ARG:HD3	1.90	0.72
3:3:105:ASN:HB3	3:3:228:THR:HG22	1.73	0.71
1:1:272:ARG:HE	3:3:57:ASN:HD22	1.37	0.70
1:1:278:MET:HE2	3:3:189:PHE:CD1	2.25	0.69
2:2:145:GLU:HG3	2:2:168:VAL:HG23	1.76	0.68
2:2:82:LEU:HD21	2:2:247:ILE:HD13	1.76	0.68
2:2:12:ARG:HH22	3:3:160:LEU:HD11	1.59	0.67
2:2:104:THR:HG23	2:2:252:ALA:HB2	1.77	0.66
3:3:173:GLN:HG2	3:3:174:THR:N	2.10	0.65
1:1:120:ILE:HD11	1:1:141:ILE:HD11	1.78	0.65
4:4:51:SER:HA	4:4:54:THR:O	1.96	0.65
1:1:181:PRO:HD2	3:3:25:MET:CE	2.27	0.65
1:1:183:LEU:HD21	3:3:25:MET:CE	2.26	0.65
1:1:16:ASP:HB3	1:1:53:VAL:O	1.98	0.64
2:2:27:GLU:O	2:2:198:ASN:HB3	1.98	0.64
4:4:27:TYR:O	4:4:27:TYR:CG	2.49	0.63
2:2:136:THR:HG21	2:2:139:ASN:HD22	1.62	0.63
1:1:38:HIS:CD2	4:4:55:GLU:HG2	2.33	0.63
1:1:17:THR:HB	1:1:50:THR:HG21	1.81	0.62
1:1:125:GLN:HB2	1:1:228:PRO:HG2	1.81	0.62
2:2:145:GLU:HG2	2:2:167:LEU:HA	1.80	0.62
1:1:36:THR:HA	2:2:29:ALA:HB1	1.81	0.61
2:2:119:GLN:NE2	3:3:205:GLN:HB3	2.16	0.61
2:2:104:THR:HG21	2:2:249:PRO:HB3	1.82	0.60
1:1:80:GLU:HG2	1:1:230:LYS:HG3	1.83	0.60
4:4:27:TYR:HD1	4:4:27:TYR:C	2.00	0.60
2:2:135:ALA:O	2:2:162:SER:HB3	2.01	0.60
1:1:102:ARG:NH1	1:1:251:ARG:O	2.35	0.60
1:1:269:THR:HG21	3:3:93:SER:O	2.02	0.59
3:3:178:TYR:HB2	3:3:185:THR:HG21	1.82	0.59
3:3:75:ASN:H	3:3:197:ASN:HD21	1.49	0.59
1:1:181:PRO:HD2	3:3:25:MET:HE3	1.84	0.58
1:1:213:MET:HG3	5:1:282:PLM:H72	1.86	0.58
3:3:185:THR:HG23	3:3:185:THR:O	2.03	0.58
4:4:25:ILE:HG22	4:4:26:HIS:O	2.03	0.58
4:4:66:PRO:HG2	4:4:69:ASN:HD22	1.68	0.57
3:3:116:LEU:HD23	3:3:214:VAL:HG22	1.87	0.57
1:1:64:ILE:HD11	3:3:40:VAL:HB	1.86	0.57
1:1:178:MET:HE1	5:1:282:PLM:HF1	1.86	0.57
1:1:134:ALA:HA	1:1:225:SER:HB3	1.88	0.56
1:1:183:LEU:HD21	3:3:25:MET:HE3	1.88	0.56

Continued on next page...

Continued from previous page...

Atom-1	Atom-2	Interatomic distance (Å)	Clash overlap (Å)
2:2:136:THR:HG21	2:2:165:ASN:O	2.05	0.56
3:3:53:VAL:CG2	3:3:214:VAL:HG23	2.33	0.56
3:3:131:LEU:HD11	3:3:153:HIS:CD2	2.41	0.55
1:1:38:HIS:NE2	4:4:55:GLU:HG2	2.22	0.55
1:1:38:HIS:HB2	4:4:57:VAL:HG13	1.88	0.55
2:2:34:GLY:HA3	2:2:205:PRO:HD3	1.87	0.55
2:2:86:LEU:HA	2:2:89:LEU:HD23	1.89	0.55
1:1:36:THR:HG22	2:2:29:ALA:HB1	1.88	0.55
2:2:19:GLY:HA2	2:2:58:VAL:HG13	1.89	0.55
2:2:20:ASN:HD22	2:2:62:ARG:NE	1.97	0.55
3:3:53:VAL:HG21	3:3:214:VAL:CG2	2.32	0.55
2:2:122:LEU:HD23	2:2:227:PRO:HB3	1.89	0.55
3:3:44:MET:O	3:3:48:GLU:HG3	2.07	0.55
1:1:92:ILE:HD13	5:1:282:PLM:HA1	1.89	0.54
2:2:34:GLY:HA3	2:2:205:PRO:CD	2.38	0.54
3:3:104:LEU:O	3:3:179:VAL:HG21	2.07	0.54
1:1:38:HIS:HB2	4:4:57:VAL:CG1	2.38	0.54
2:2:93:GLY:O	2:2:97:GLN:HG3	2.08	0.54
2:2:191:TRP:O	2:2:197:ASN:ND2	2.41	0.53
2:2:208:ASN:HD22	2:2:209:SER:H	1.57	0.53
1:1:44:PRO:O	1:1:48:MET:HG2	2.08	0.53
2:2:80:TRP:CZ2	2:2:152:ALA:HB2	2.43	0.53
3:3:118:PHE:O	3:3:163:SER:HA	2.09	0.53
1:1:101:ARG:O	1:1:105:GLU:HG3	2.09	0.53
3:3:73:ARG:HG2	3:3:74:SER:N	2.23	0.52
3:3:75:ASN:N	3:3:197:ASN:HD21	2.05	0.52
1:1:86:ARG:HG2	1:1:86:ARG:HH11	1.73	0.52
1:1:20:THR:HB	1:1:50:THR:H	1.74	0.52
2:2:23:ILE:HD11	2:2:246:THR:HG21	1.92	0.51
1:1:50:THR:HG22	1:1:51:ARG:O	2.10	0.51
2:2:181:VAL:HG11	3:3:65:MET:SD	2.51	0.51
3:3:183:GLU:O	3:3:183:GLU:HG3	2.10	0.51
3:3:107:TYR:O	3:3:179:VAL:HG11	2.11	0.51
2:2:104:THR:HG22	2:2:250:MET:H	1.76	0.51
2:2:233:TYR:HB2	2:2:237:SER:HB2	1.93	0.51
1:1:273:GLN:O	3:3:58:VAL:HG22	2.11	0.50
1:1:277:THR:HG22	1:1:279:THR:H	1.75	0.50
3:3:116:LEU:CD2	3:3:214:VAL:HG22	2.41	0.50
3:3:108:THR:HB	3:3:224:LEU:HB3	1.94	0.50
1:1:68:LEU:HD12	1:1:242:VAL:HG11	1.93	0.50
2:2:165:ASN:CB	2:2:167:LEU:HG	2.40	0.50

Continued on next page...

Continued from previous page...

Atom-1	Atom-2	Interatomic distance (Å)	Clash overlap (Å)
1:1:183:LEU:HD21	3:3:25:MET:HE1	1.92	0.49
3:3:107:TYR:CE2	3:3:225:LEU:HD13	2.48	0.49
3:3:55:VAL:HG21	3:3:70:ILE:HD11	1.95	0.49
1:1:251:ARG:NH2	1:1:263:PHE:HB3	2.27	0.49
1:1:275:ILE:CG2	3:3:55:VAL:HG12	2.43	0.49
2:2:103:ARG:O	2:2:252:ALA:HA	2.13	0.49
2:2:99:HIS:CG	2:2:254:TYR:HB3	2.48	0.48
2:2:136:THR:HG23	2:2:136:THR:O	2.13	0.48
1:1:178:MET:HE3	5:1:282:PLM:HG3	1.94	0.48
2:2:83:PRO:HD2	2:2:219:ASN:HA	1.96	0.48
3:3:107:TYR:CZ	3:3:225:LEU:HD13	2.49	0.48
1:1:69:CYS:O	4:4:43:ARG:NH2	2.47	0.48
3:3:53:VAL:CG1	3:3:94:VAL:HG12	2.44	0.48
4:4:5:VAL:HG12	4:4:26:HIS:CD2	2.48	0.48
1:1:110:VAL:HG12	1:1:112:PHE:HD2	1.78	0.48
3:3:75:ASN:N	3:3:197:ASN:ND2	2.56	0.47
2:2:66:LEU:HD22	2:2:150:ASP:CB	2.45	0.47
2:2:149:GLY:C	2:2:151:THR:H	2.18	0.47
4:4:4:GLN:HG3	4:4:29:ASN:O	2.15	0.47
1:1:80:GLU:O	1:1:86:ARG:NH1	2.47	0.47
1:1:134:ALA:HA	1:1:225:SER:CB	2.44	0.47
1:1:137:LEU:HD11	1:1:229:ILE:HG21	1.97	0.47
2:2:63:PHE:CD1	2:2:248:ALA:HB2	2.49	0.47
2:2:208:ASN:ND2	2:2:209:SER:H	2.13	0.47
3:3:173:GLN:HG2	3:3:174:THR:HG23	1.96	0.47
2:2:125:VAL:O	2:2:223:LEU:HD12	2.15	0.46
1:1:35:GLU:HB3	2:2:197:ASN:ND2	2.30	0.46
2:2:96:MET:HG3	2:2:215:MET:HB2	1.97	0.46
1:1:116:LEU:O	1:1:177:ARG:HA	2.16	0.46
3:3:139:ALA:O	3:3:140:GLY:O	2.34	0.46
1:1:118:PHE:HB2	1:1:176:PRO:HG2	1.97	0.46
1:1:178:MET:HE1	5:1:282:PLM:CF	2.45	0.46
1:1:187:ASN:OD1	1:1:187:ASN:N	2.49	0.45
1:1:98:ALA:HB2	3:3:237:PHE:HZ	1.81	0.45
2:2:30:ASN:ND2	4:4:59:ASP:HB2	2.30	0.45
2:2:117:PHE:CD2	3:3:204:ALA:HB2	2.51	0.45
4:4:5:VAL:HG12	4:4:26:HIS:HD2	1.81	0.45
1:1:95:ARG:HA	1:1:101:ARG:HD2	1.97	0.45
1:1:192:PHE:CE1	1:1:248:ARG:HD2	2.51	0.45
1:1:253:CYS:HG	1:1:263:PHE:HD2	1.62	0.45
1:1:109:TYR:HE2	1:1:246:ILE:HD12	1.82	0.45

Continued on next page...

Continued from previous page...

Atom-1	Atom-2	Interatomic distance (Å)	Clash overlap (Å)
2:2:85:ALA:HA	2:2:150:ASP:H	1.81	0.45
1:1:142:MET:HG3	1:1:161:THR:CG2	2.46	0.45
1:1:272:ARG:HA	1:1:281:THR:HG23	1.99	0.45
1:1:230:LYS:HB3	1:1:230:LYS:HE2	1.71	0.44
1:1:178:MET:HE3	5:1:282:PLM:CG	2.46	0.44
2:2:103:ARG:HB2	2:2:212:MET:HG2	1.98	0.44
3:3:200:VAL:CG1	3:3:204:ALA:HB3	2.46	0.44
1:1:200:SER:HB3	2:2:263:GLN:HA	2.00	0.44
3:3:129:LYS:HA	3:3:156:TRP:O	2.18	0.44
2:2:66:LEU:HD22	2:2:150:ASP:HB3	1.98	0.44
3:3:156:TRP:CD1	3:3:164:CYS:HB2	2.53	0.44
1:1:29:PRO:O	1:1:42:VAL:HG22	2.18	0.44
2:2:60:THR:HG23	2:2:92:PHE:HD1	1.83	0.44
3:3:98:THR:HG22	3:3:99:LEU:N	2.33	0.44
1:1:257:LYS:HB2	1:1:260:ASN:OD1	2.18	0.44
2:2:125:VAL:HG23	2:2:224:MET:HB2	2.00	0.44
3:3:98:THR:HG22	3:3:99:LEU:H	1.83	0.44
3:3:185:THR:O	3:3:185:THR:CG2	2.65	0.44
4:4:32:TYR:CD1	6:4:1:MYR:H131	2.53	0.44
1:1:51:ARG:HG3	1:1:53:VAL:HG23	1.99	0.43
2:2:53:PRO:HB3	2:2:255:ASN:OD1	2.18	0.43
1:1:141:ILE:O	1:1:166:SER:HB2	2.18	0.43
3:3:69:GLN:HB3	3:3:209:TYR:CD1	2.53	0.43
1:1:278:MET:CE	3:3:189:PHE:HD1	2.23	0.43
3:3:41:LYS:HB2	3:3:45:GLU:OE2	2.18	0.42
1:1:91:VAL:HG23	1:1:91:VAL:O	2.19	0.42
1:1:248:ARG:HA	2:2:186:ILE:HD12	2.02	0.42
2:2:69:VAL:HG12	2:2:243:ILE:HB	1.99	0.42
2:2:15:SER:HA	2:2:23:ILE:O	2.18	0.42
3:3:104:LEU:HD11	3:3:220:PHE:CE1	2.54	0.42
1:1:261:VAL:HG12	1:1:261:VAL:O	2.19	0.42
2:2:81:LYS:HG3	2:2:147:LEU:CD2	2.50	0.42
4:4:5:VAL:CG1	4:4:26:HIS:HB3	2.50	0.42
3:3:149:MET:HB3	3:3:150:LEU:HG	2.02	0.41
2:2:81:LYS:HG3	2:2:147:LEU:HD23	2.02	0.41
3:3:112:GLY:HA3	3:3:220:PHE:HA	2.02	0.41
3:3:178:TYR:H	3:3:185:THR:HG21	1.85	0.41
1:1:180:VAL:HA	1:1:181:PRO:HD3	1.91	0.41
3:3:2:LEU:HA	3:3:3:PRO:HD2	1.95	0.41
1:1:272:ARG:HE	3:3:57:ASN:ND2	2.11	0.41
3:3:4:THR:CG2	3:3:5:MET:N	2.83	0.41

Continued on next page...

Continued from previous page...

Atom-1	Atom-2	Interatomic distance (Å)	Clash overlap (Å)
2:2:21:SER:CB	2:2:63:PHE:HB2	2.50	0.41
1:1:178:MET:CE	5:1:282:PLM:HG3	2.51	0.41
2:2:155:PHE:CB	2:2:172:VAL:HG13	2.51	0.41
1:1:134:ALA:CA	1:1:225:SER:HB3	2.51	0.41
1:1:276:THR:HG22	1:1:276:THR:O	2.21	0.41
2:2:158:LYS:HG3	2:2:159:PRO:HD2	2.02	0.41
1:1:269:THR:HG23	3:3:97:ARG:HB2	2.02	0.40
2:2:55:GLN:HE21	2:2:253:GLU:HG2	1.85	0.40
1:1:39:THR:HG21	3:3:48:GLU:O	2.21	0.40
6:4:1:MYR:H71	6:4:1:MYR:H101	1.66	0.40
1:1:63:THR:HG21	4:4:46:PHE:HD1	1.86	0.40
1:1:64:ILE:HD13	1:1:244:ALA:HB3	2.02	0.40
1:1:150:VAL:HA	1:1:151:PRO:HD3	1.98	0.40
1:1:182:PHE:CZ	1:1:184:SER:HB3	2.57	0.40

There are no symmetry-related clashes.

5.3 Torsion angles [i](#)

5.3.1 Protein backbone [i](#)

In the following table, the Percentiles column shows the percent Ramachandran outliers of the chain as a percentile score with respect to all X-ray entries followed by that with respect to entries of similar resolution.

The Analysed column shows the number of residues for which the backbone conformation was analysed, and the total number of residues.

Mol	Chain	Analysed	Favoured	Allowed	Outliers	Percentiles	
1	1	267/281 (95%)	244 (91%)	21 (8%)	2 (1%)	19	53
2	2	254/263 (97%)	225 (89%)	26 (10%)	3 (1%)	11	43
3	3	236/238 (99%)	221 (94%)	11 (5%)	4 (2%)	7	36
4	4	51/68 (75%)	46 (90%)	5 (10%)	0	100	100
All	All	808/850 (95%)	736 (91%)	63 (8%)	9 (1%)	12	45

All (9) Ramachandran outliers are listed below:

Mol	Chain	Res	Type
1	1	274	SER

Continued on next page...

Continued from previous page...

Mol	Chain	Res	Type
2	2	150	ASP
3	3	58	VAL
3	3	197	ASN
2	2	34	GLY
2	2	85	ALA
3	3	140	GLY
3	3	224	LEU
1	1	146	PRO

5.3.2 Protein sidechains [i](#)

In the following table, the Percentiles column shows the percent sidechain outliers of the chain as a percentile score with respect to all X-ray entries followed by that with respect to entries of similar resolution.

The Analysed column shows the number of residues for which the sidechain conformation was analysed, and the total number of residues.

Mol	Chain	Analysed	Rotameric	Outliers	Percentiles	
1	1	237/244 (97%)	221 (93%)	16 (7%)	13	39
2	2	218/225 (97%)	196 (90%)	22 (10%)	6	26
3	3	206/206 (100%)	188 (91%)	18 (9%)	8	31
4	4	48/57 (84%)	42 (88%)	6 (12%)	3	19
All	All	709/732 (97%)	647 (91%)	62 (9%)	8	31

All (62) residues with a non-rotameric sidechain are listed below:

Mol	Chain	Res	Type
1	1	16	ASP
1	1	38	HIS
1	1	45	SER
1	1	77	THR
1	1	93	THR
1	1	102	ARG
1	1	106	PHE
1	1	114	LEU
1	1	154	VAL
1	1	178	MET
1	1	187	ASN
1	1	202	ASN
1	1	207	ILE

Continued on next page...

Continued from previous page...

Mol	Chain	Res	Type
1	1	226	THR
1	1	269	THR
1	1	273	GLN
2	2	14	ARG
2	2	15	SER
2	2	23	ILE
2	2	25	THR
2	2	45	SER
2	2	48	THR
2	2	79	TRP
2	2	84	ASP
2	2	104	THR
2	2	125	VAL
2	2	126	CYS
2	2	129	GLU
2	2	162	SER
2	2	164	SER
2	2	171	VAL
2	2	172	VAL
2	2	186	ILE
2	2	208	ASN
2	2	217	ARG
2	2	220	ASN
2	2	234	CYS
2	2	259	LEU
3	3	12	GLN
3	3	25	MET
3	3	41	LYS
3	3	42	ASN
3	3	51	SER
3	3	60	GLU
3	3	62	VAL
3	3	72	VAL
3	3	78	SER
3	3	104	LEU
3	3	127	THR
3	3	150	LEU
3	3	163	SER
3	3	185	THR
3	3	198	ILE
3	3	222	VAL
3	3	223	ARG

Continued on next page...

Continued from previous page...

Mol	Chain	Res	Type
3	3	228	THR
4	4	4	GLN
4	4	6	SER
4	4	27	TYR
4	4	40	SER
4	4	43	ARG
4	4	44	GLN

Sometimes sidechains can be flipped to improve hydrogen bonding and reduce clashes. All (20) such sidechains are listed below:

Mol	Chain	Res	Type
1	1	52	HIS
1	1	57	HIS
1	1	96	GLN
1	1	132	GLN
1	1	164	ASN
2	2	20	ASN
2	2	109	HIS
2	2	111	GLN
2	2	119	GLN
2	2	139	ASN
2	2	197	ASN
2	2	208	ASN
3	3	42	ASN
3	3	57	ASN
3	3	63	ASN
3	3	197	ASN
4	4	26	HIS
4	4	29	ASN
4	4	31	ASN
4	4	69	ASN

5.3.3 RNA [i](#)

There are no RNA molecules in this entry.

5.4 Non-standard residues in protein, DNA, RNA chains [i](#)

There are no non-standard protein/DNA/RNA residues in this entry.

5.5 Carbohydrates [i](#)

There are no oligosaccharides in this entry.

5.6 Ligand geometry [i](#)

2 ligands are modelled in this entry.

In the following table, the Counts columns list the number of bonds (or angles) for which Mogul statistics could be retrieved, the number of bonds (or angles) that are observed in the model and the number of bonds (or angles) that are defined in the Chemical Component Dictionary. The Link column lists molecule types, if any, to which the group is linked. The Z score for a bond length (or angle) is the number of standard deviations the observed value is removed from the expected value. A bond length (or angle) with $|Z| > 2$ is considered an outlier worth inspection. RMSZ is the root-mean-square of all Z scores of the bond lengths (or angles).

Mol	Type	Chain	Res	Link	Bond lengths			Bond angles		
					Counts	RMSZ	# Z > 2	Counts	RMSZ	# Z > 2
5	PLM	1	282	-	17,17,17	0.76	0	17,17,17	2.09	4 (23%)
6	MYR	4	1	4	13,14,15	0.51	0	12,13,15	1.06	0

In the following table, the Chirals column lists the number of chiral outliers, the number of chiral centers analysed, the number of these observed in the model and the number defined in the Chemical Component Dictionary. Similar counts are reported in the Torsion and Rings columns. '-' means no outliers of that kind were identified.

Mol	Type	Chain	Res	Link	Chirals	Torsions	Rings
5	PLM	1	282	-	-	8/15/15/15	-
6	MYR	4	1	4	-	8/12/12/13	-

There are no bond length outliers.

All (4) bond angle outliers are listed below:

Mol	Chain	Res	Type	Atoms	Z	Observed(°)	Ideal(°)
5	1	282	PLM	C7-C6-C5	5.73	143.32	114.37
5	1	282	PLM	C3-C2-C1	3.72	124.22	114.51
5	1	282	PLM	C5-C4-C3	3.02	129.64	114.37
5	1	282	PLM	C6-C5-C4	-2.33	102.60	114.37

There are no chirality outliers.

All (16) torsion outliers are listed below:

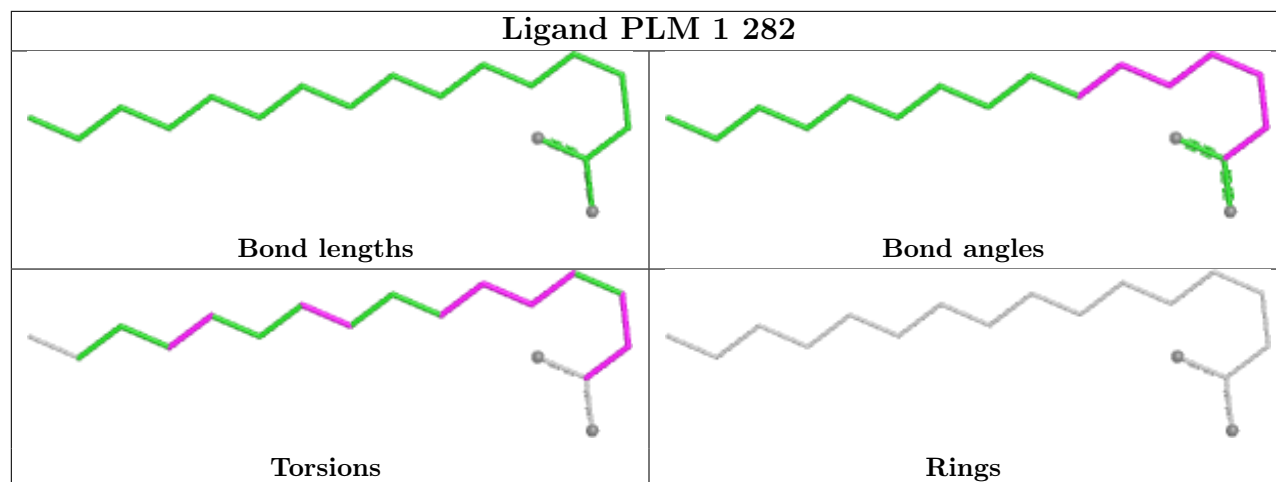
Mol	Chain	Res	Type	Atoms
6	4	1	MYR	O1-C1-C2-C3
6	4	1	MYR	C7-C8-C9-C10
5	1	282	PLM	C4-C5-C6-C7
5	1	282	PLM	C1-C2-C3-C4
6	4	1	MYR	C10-C11-C12-C13
6	4	1	MYR	C5-C6-C7-C8
5	1	282	PLM	C5-C6-C7-C8
6	4	1	MYR	C6-C7-C8-C9
6	4	1	MYR	C11-C12-C13-C14
5	1	282	PLM	C3-C4-C5-C6
5	1	282	PLM	C8-C9-CA-CB
6	4	1	MYR	C9-C10-C11-C12
5	1	282	PLM	O2-C1-C2-C3
5	1	282	PLM	O1-C1-C2-C3
5	1	282	PLM	CB-CC-CD-CE
6	4	1	MYR	C1-C2-C3-C4

There are no ring outliers.

2 monomers are involved in 11 short contacts:

Mol	Chain	Res	Type	Clashes	Symm-Clashes
5	1	282	PLM	9	0
6	4	1	MYR	2	0

The following is a two-dimensional graphical depiction of Mogul quality analysis of bond lengths, bond angles, torsion angles, and ring geometry for all instances of the Ligand of Interest. In addition, ligands with molecular weight > 250 and outliers as shown on the validation Tables will also be included. For torsion angles, if less than 5% of the Mogul distribution of torsion angles is within 10 degrees of the torsion angle in question, then that torsion angle is considered an outlier. Any bond that is central to one or more torsion angles identified as an outlier by Mogul will be highlighted in the graph. For rings, the root-mean-square deviation (RMSD) between the ring in question and similar rings identified by Mogul is calculated over all ring torsion angles. If the average RMSD is greater than 60 degrees and the minimal RMSD between the ring in question and any Mogul-identified rings is also greater than 60 degrees, then that ring is considered an outlier. The outliers are highlighted in purple. The color gray indicates Mogul did not find sufficient equivalents in the CSD to analyse the geometry.



5.7 Other polymers [i](#)

There are no such residues in this entry.

5.8 Polymer linkage issues [i](#)

There are no chain breaks in this entry.

6 Fit of model and data [i](#)

6.1 Protein, DNA and RNA chains [i](#)

Warning: The R factor obtained from EDS is 0.4792, which does not match the depositor's R factor of 0.264. Please interpret the results in this section carefully.

In the following table, the column labelled '#RSRZ > 2' contains the number (and percentage) of RSRZ outliers, followed by percent RSRZ outliers for the chain as percentile scores relative to all X-ray entries and entries of similar resolution. The OWAB column contains the minimum, median, 95th percentile and maximum values of the occupancy-weighted average B-factor per residue. The column labelled 'Q < 0.9' lists the number of (and percentage) of residues with an average occupancy less than 0.9.

Mol	Chain	Analysed	<RSRZ>	#RSRZ>2	OWAB(Å ²)	Q<0.9	
1	1	269/281 (95%)	-0.34	0	100, 100	18, 18, 18, 18	0
2	2	256/263 (97%)	-0.42	0	100, 100	18, 18, 18, 19	0
3	3	238/238 (100%)	-0.41	0	100, 100	18, 18, 18, 18	0
4	4	55/68 (80%)	-0.26	0	100, 100	18, 18, 18, 20	0
All	All	818/850 (96%)	-0.38	0	100, 100	18, 18, 18, 20	0

There are no RSRZ outliers to report.

6.2 Non-standard residues in protein, DNA, RNA chains [i](#)

There are no non-standard protein/DNA/RNA residues in this entry.

6.3 Carbohydrates [i](#)

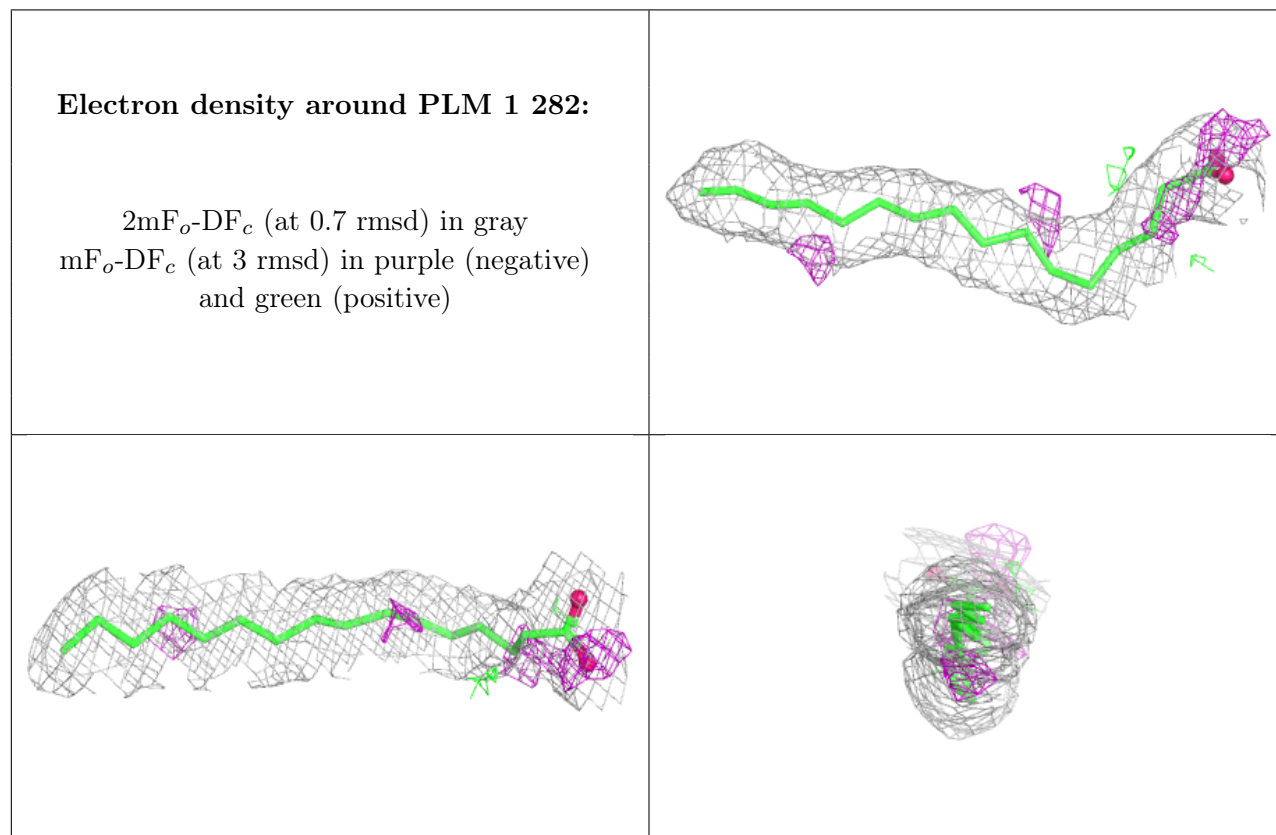
There are no monosaccharides in this entry.

6.4 Ligands [i](#)

In the following table, the Atoms column lists the number of modelled atoms in the group and the number defined in the chemical component dictionary. The B-factors column lists the minimum, median, 95th percentile and maximum values of B factors of atoms in the group. The column labelled 'Q < 0.9' lists the number of atoms with occupancy less than 0.9.

Mol	Type	Chain	Res	Atoms	RSCC	RSR	B-factors(Å ²)	Q<0.9
5	PLM	1	282	18/18	0.96	0.08	0,0,0,0	0
6	MYR	4	1	15/16	0.97	0.10	0,0,0,0	0

The following is a graphical depiction of the model fit to experimental electron density of all instances of the Ligand of Interest. In addition, ligands with molecular weight > 250 and outliers as shown on the geometry validation Tables will also be included. Each fit is shown from different orientation to approximate a three-dimensional view.



6.5 Other polymers [i](#)

There are no such residues in this entry.