



# Full wwPDB X-ray Structure Validation Report ⓘ

Mar 10, 2018 – 05:37 am GMT

PDB ID : 2COG  
Title : Crystal structure of oxidized human cytosolic branched-chain aminotransferase complexed with 4-methylvalerate  
Authors : Goto, M.  
Deposited on : 2005-05-17  
Resolution : 2.10 Å(reported)

This is a Full wwPDB X-ray Structure Validation Report for a publicly released PDB entry.

We welcome your comments at [validation@mail.wwpdb.org](mailto:validation@mail.wwpdb.org)

A user guide is available at

<https://www.wwpdb.org/validation/2017/XrayValidationReportHelp>

with specific help available everywhere you see the ⓘ symbol.

---

The following versions of software and data (see [references ⓘ](#)) were used in the production of this report:

MolProbity : 4.02b-467  
Mogul : 1.7.3 (157068), CSD as539be (2018)  
Xtriage (Phenix) : 1.13  
EDS : trunk30967  
Percentile statistics : 20171227.v01 (using entries in the PDB archive December 27th 2017)  
Refmac : 5.8.0158  
CCP4 : 7.0 (Gargrove)  
Ideal geometry (proteins) : Engh & Huber (2001)  
Ideal geometry (DNA, RNA) : Parkinson et al. (1996)  
Validation Pipeline (wwPDB-VP) : trunk30967

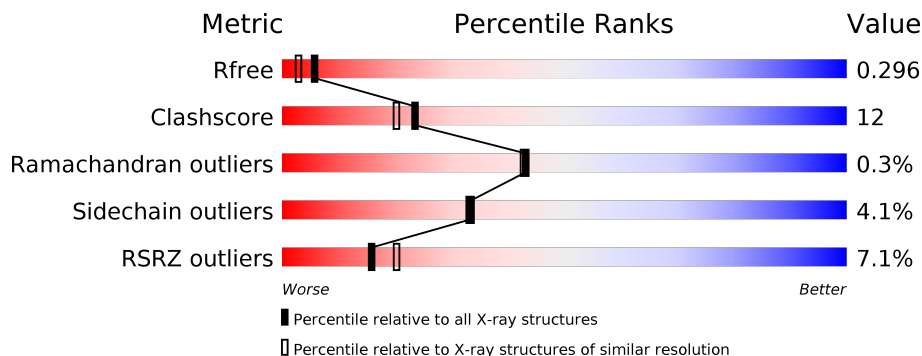
# 1 Overall quality at a glance

The following experimental techniques were used to determine the structure:

*X-RAY DIFFRACTION*

The reported resolution of this entry is 2.10 Å.

Percentile scores (ranging between 0-100) for global validation metrics of the entry are shown in the following graphic. The table shows the number of entries on which the scores are based.



Metric	Whole archive (#Entries)	Similar resolution (#Entries, resolution range(Å))
$R_{free}$	111664	4608 (2.10-2.10)
Clashscore	122126	5109 (2.10-2.10)
Ramachandran outliers	120053	5059 (2.10-2.10)
Sidechain outliers	120020	5060 (2.10-2.10)
RSRZ outliers	108989	4497 (2.10-2.10)

The table below summarises the geometric issues observed across the polymeric chains and their fit to the electron density. The red, orange, yellow and green segments on the lower bar indicate the fraction of residues that contain outliers for  $\geq 3$ , 2, 1 and 0 types of geometric quality criteria. A grey segment represents the fraction of residues that are not modelled. The numeric value for each fraction is indicated below the corresponding segment, with a dot representing fractions  $\leq 5\%$ . The upper red bar (where present) indicates the fraction of residues that have poor fit to the electron density. The numeric value is given above the bar.

Mol	Chain	Length	Quality of chain
1	A	386	 9% 68% 23% • 7%
1	B	386	 4% 70% 21% • 7%

## 2 Entry composition [i](#)

There are 5 unique types of molecules in this entry. The entry contains 6040 atoms, of which 0 are hydrogens and 0 are deuteriums.

In the tables below, the ZeroOcc column contains the number of atoms modelled with zero occupancy, the AltConf column contains the number of residues with at least one atom in alternate conformation and the Trace column contains the number of residues modelled with at most 2 atoms.

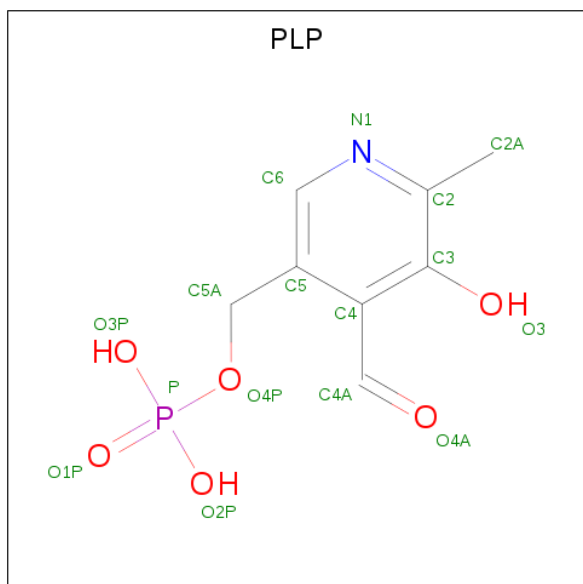
- Molecule 1 is a protein called branched chain aminotransferase 1, cytosolic.

Mol	Chain	Residues	Atoms					ZeroOcc	AltConf	Trace
			Total	C	N	O	S			
1	A	358	2809	1811	462	521	15	0	0	0
1	B	358	2833	1826	469	523	15	0	0	0

There are 2 discrepancies between the modelled and reference sequences:

Chain	Residue	Modelled	Actual	Comment	Reference
A	379	ARG	SER	ENGINEERED	UNP P54687
B	379	ARG	SER	ENGINEERED	UNP P54687

- Molecule 2 is PYRIDOXAL-5'-PHOSPHATE (three-letter code: PLP) (formula: C<sub>8</sub>H<sub>10</sub>NO<sub>6</sub>P).



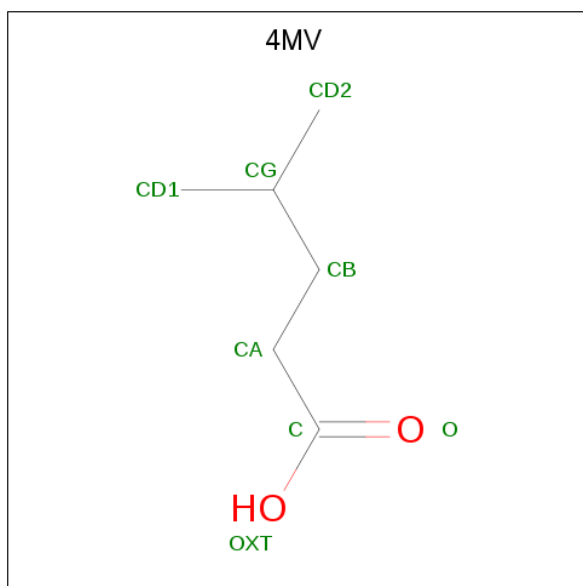
Mol	Chain	Residues	Atoms					ZeroOcc	AltConf
			Total	C	N	O	P		
2	A	1	15	8	1	5	1	0	0

*Continued on next page...*

Continued from previous page...

Mol	Chain	Residues	Atoms					ZeroOcc	AltConf
2	B	1	Total	C	N	O	P	0	0
			15	8	1	5	1		

- Molecule 3 is 4-METHYL VALERIC ACID (three-letter code: 4MV) (formula: C<sub>6</sub>H<sub>12</sub>O<sub>2</sub>).



Mol	Chain	Residues	Atoms			ZeroOcc	AltConf
3	A	1	Total	C	O	0	0
			8	6	2		
3	B	1	Total	C	O	0	0
			8	6	2		

- Molecule 4 is MAGNESIUM ION (three-letter code: MG) (formula: Mg).

Mol	Chain	Residues	Atoms		ZeroOcc	AltConf
4	B	1	Total	Mg	0	0
			1	1		

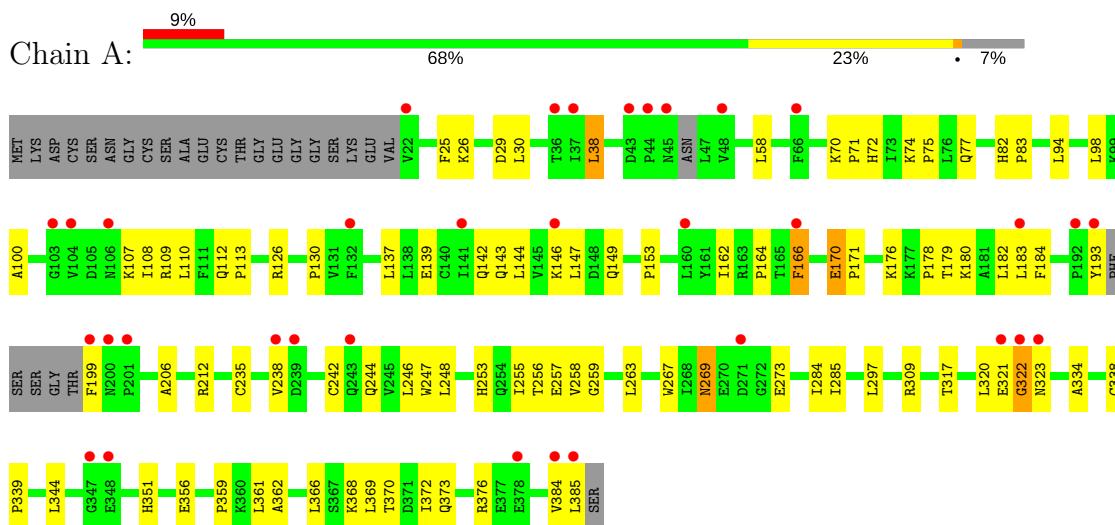
- Molecule 5 is water.

Mol	Chain	Residues	Atoms		ZeroOcc	AltConf
5	A	148	Total	O	0	0
			148	148		
5	B	203	Total	O	0	0
			203	203		

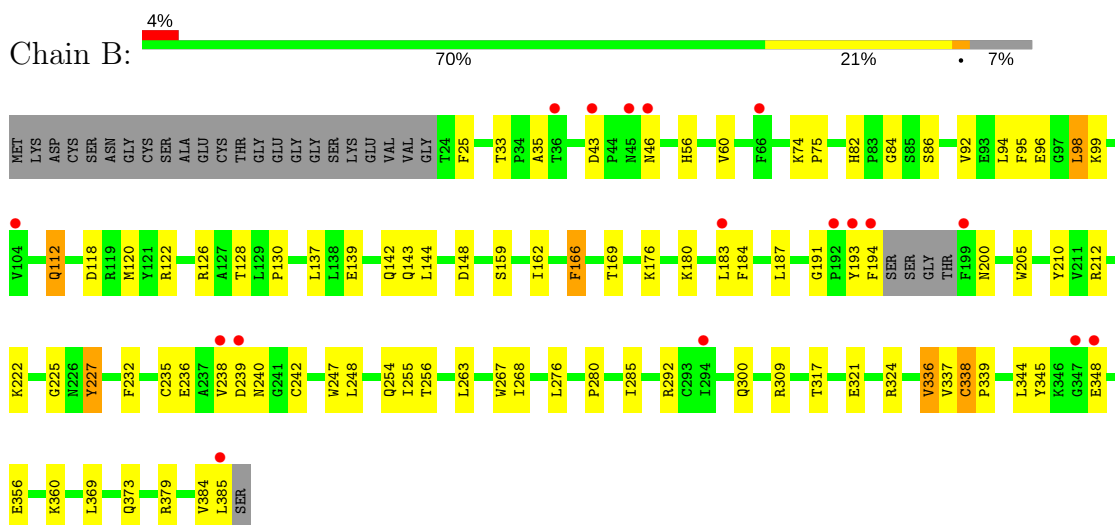
### 3 Residue-property plots

These plots are drawn for all protein, RNA and DNA chains in the entry. The first graphic for a chain summarises the proportions of the various outlier classes displayed in the second graphic. The second graphic shows the sequence view annotated by issues in geometry and electron density. Residues are color-coded according to the number of geometric quality criteria for which they contain at least one outlier: green = 0, yellow = 1, orange = 2 and red = 3 or more. A red dot above a residue indicates a poor fit to the electron density ( $RSRZ > 2$ ). Stretches of 2 or more consecutive residues without any outlier are shown as a green connector. Residues present in the sample, but not in the model, are shown in grey.

- Molecule 1: branched chain aminotransferase 1, cytosolic



- Molecule 1: branched chain aminotransferase 1, cytosolic



## 4 Data and refinement statistics i

Property	Value	Source
Space group	P 21 21 21	Depositor
Cell constants a, b, c, $\alpha$ , $\beta$ , $\gamma$	66.82Å 106.90Å 110.11Å 90.00° 90.00° 90.00°	Depositor
Resolution (Å)	19.93 – 2.10 19.93 – 2.10	Depositor EDS
% Data completeness (in resolution range)	95.5 (19.93-2.10) 95.7 (19.93-2.10)	Depositor EDS
$R_{merge}$	(Not available)	Depositor
$R_{sym}$	(Not available)	Depositor
$\langle I/\sigma(I) \rangle$ <sup>1</sup>	4.59 (at 2.09Å)	Xtrriage
Refinement program	CNS 1.1	Depositor
R, $R_{free}$	0.233 , 0.294 0.234 , 0.296	Depositor DCC
$R_{free}$ test set	4509 reflections (10.10%)	wwPDB-VP
Wilson B-factor (Å <sup>2</sup> )	22.9	Xtrriage
Anisotropy	0.438	Xtrriage
Bulk solvent $k_{sol}$ (e/Å <sup>3</sup> ), $B_{sol}$ (Å <sup>2</sup> )	0.41 , 67.7	EDS
L-test for twinning <sup>2</sup>	$\langle  L  \rangle = 0.49$ , $\langle L^2 \rangle = 0.33$	Xtrriage
Estimated twinning fraction	0.015 for -h,l,k	Xtrriage
$F_o, F_c$ correlation	0.92	EDS
Total number of atoms	6040	wwPDB-VP
Average B, all atoms (Å <sup>2</sup> )	26.0	wwPDB-VP

Xtrriage's analysis on translational NCS is as follows: *The largest off-origin peak in the Patterson function is 3.84% of the height of the origin peak. No significant pseudotranslation is detected.*

<sup>1</sup>Intensities estimated from amplitudes.

<sup>2</sup>Theoretical values of  $\langle |L| \rangle$ ,  $\langle L^2 \rangle$  for acentric reflections are 0.5, 0.333 respectively for untwinned datasets, and 0.375, 0.2 for perfectly twinned datasets.

## 5 Model quality [i](#)

### 5.1 Standard geometry [i](#)

Bond lengths and bond angles in the following residue types are not validated in this section: MG, 4MV, PLP

The Z score for a bond length (or angle) is the number of standard deviations the observed value is removed from the expected value. A bond length (or angle) with  $|Z| > 5$  is considered an outlier worth inspection. RMSZ is the root-mean-square of all Z scores of the bond lengths (or angles).

Mol	Chain	Bond lengths		Bond angles	
		RMSZ	# Z  >5	RMSZ	# Z  >5
1	A	0.33	0/2880	0.61	0/3920
1	B	0.35	0/2906	0.62	0/3953
All	All	0.34	0/5786	0.62	0/7873

Chiral center outliers are detected by calculating the chiral volume of a chiral center and verifying if the center is modelled as a planar moiety or with the opposite hand. A planarity outlier is detected by checking planarity of atoms in a peptide group, atoms in a mainchain group or atoms of a sidechain that are expected to be planar.

Mol	Chain	#Chirality outliers	#Planarity outliers
1	B	0	1

There are no bond length outliers.

There are no bond angle outliers.

There are no chirality outliers.

All (1) planarity outliers are listed below:

Mol	Chain	Res	Type	Group
1	B	227	TYR	Sidechain

### 5.2 Too-close contacts [i](#)

In the following table, the Non-H and H(model) columns list the number of non-hydrogen atoms and hydrogen atoms in the chain respectively. The H(added) column lists the number of hydrogen atoms added and optimized by MolProbity. The Clashes column lists the number of clashes within the asymmetric unit, whereas Symm-Clashes lists symmetry related clashes.

Mol	Chain	Non-H	H(model)	H(added)	Clashes	Symm-Clashes
1	A	2809	0	2760	72	0
1	B	2833	0	2799	64	0
2	A	15	0	7	1	0
2	B	15	0	7	1	0
3	A	8	0	11	0	0
3	B	8	0	11	0	0
4	B	1	0	0	0	0
5	A	148	0	0	4	0
5	B	203	0	0	5	0
All	All	6040	0	5595	136	0

The all-atom clashscore is defined as the number of clashes found per 1000 atoms (including hydrogen atoms). The all-atom clashscore for this structure is 12.

All (136) close contacts within the same asymmetric unit are listed below, sorted by their clash magnitude.

Atom-1	Atom-2	Interatomic distance (Å)	Clash overlap (Å)
1:B:336:VAL:HG13	1:B:337:VAL:HG23	1.48	0.93
1:A:109:ARG:HG2	1:A:384:VAL:HG22	1.48	0.93
1:B:35:ALA:H	1:B:56:HIS:HE1	1.24	0.83
1:A:142:GLN:HE21	1:A:385:LEU:HD12	1.46	0.80
1:A:142:GLN:NE2	1:A:385:LEU:HD12	1.98	0.78
1:A:170:GLU:HG2	1:A:179:THR:H	1.49	0.77
1:B:384:VAL:HG12	1:B:385:LEU:HG	1.65	0.77
1:B:126:ARG:HG3	5:B:465:HOH:O	1.84	0.76
1:B:300:GLN:NE2	1:B:379:ARG:HH22	1.84	0.76
1:A:284:ILE:HG13	1:A:285:ILE:HD12	1.69	0.73
1:A:269:ASN:ND2	1:A:273:GLU:H	1.87	0.73
1:B:345:TYR:O	1:B:348:GLU:HG2	1.90	0.71
1:B:98:LEU:CD2	1:B:162:ILE:HD12	2.21	0.70
1:B:98:LEU:HD22	1:B:162:ILE:HD12	1.74	0.69
1:A:369:LEU:O	1:A:373:GLN:HG3	1.94	0.67
1:A:370:THR:HG22	1:A:376:ARG:HH22	1.58	0.67
1:B:317:THR:O	1:B:321:GLU:HG3	1.95	0.66
1:A:351:HIS:HE1	1:A:356:GLU:OE1	1.77	0.66
1:A:110:LEU:HB3	1:A:113:PRO:HG3	1.77	0.66
1:A:246:LEU:HD11	1:A:255:ILE:HG23	1.76	0.66
1:A:255:ILE:CG2	1:A:263:LEU:HD13	2.26	0.65
1:B:74:LYS:HB2	1:B:75:PRO:HD2	1.78	0.64
1:A:108:ILE:CD1	1:A:149:GLN:HB2	2.26	0.64
1:A:74:LYS:HE3	1:A:77:GLN:HE21	1.64	0.63
1:A:170:GLU:HG3	1:A:178:PRO:HA	1.80	0.62

*Continued on next page...*



*Continued from previous page...*

Atom-1	Atom-2	Interatomic distance (Å)	Clash overlap (Å)
1:B:56:HIS:HD2	1:B:148:ASP:OD2	1.81	0.62
1:B:236:GLU:HA	1:B:239:ASP:OD1	2.00	0.62
1:A:139:GLU:O	1:A:143:GLN:HG2	2.00	0.61
1:A:170:GLU:OE1	1:A:171:PRO:HD2	2.01	0.61
1:A:284:ILE:HG13	1:A:285:ILE:CD1	2.32	0.60
1:A:170:GLU:CG	1:A:179:THR:H	2.15	0.59
1:A:269:ASN:HD21	1:A:273:GLU:H	1.49	0.58
1:A:258:VAL:HG23	1:A:263:LEU:HB2	1.86	0.57
1:A:317:THR:O	1:A:321:GLU:HG2	2.06	0.56
1:A:193:TYR:HB2	1:A:334:ALA:HB1	1.88	0.56
1:A:58:LEU:HD12	1:A:72:HIS:O	2.05	0.56
1:A:112:GLN:N	1:A:113:PRO:HD3	2.22	0.55
1:B:263:LEU:HD23	1:B:263:LEU:C	2.26	0.55
1:A:235:CYS:O	1:A:238:VAL:HG22	2.07	0.55
1:B:336:VAL:HG22	1:B:369:LEU:HD13	1.88	0.54
1:B:256:THR:HB	1:B:285:ILE:HD11	1.89	0.54
1:A:269:ASN:HD21	1:A:273:GLU:HG3	1.73	0.54
1:B:169:THR:OG1	1:B:180:LYS:HG2	2.08	0.53
1:B:82:HIS:ND1	1:B:84:GLY:N	2.49	0.53
1:B:33:THR:O	1:B:75:PRO:HD3	2.08	0.53
1:B:205:TRP:CH2	1:B:236:GLU:OE2	2.62	0.53
1:B:242:CYS:SG	1:B:344:LEU:HD22	2.48	0.53
1:B:210:TYR:HH	1:B:232:PHE:HE2	1.56	0.52
1:B:144:LEU:HG	1:B:187:LEU:HD11	1.92	0.52
1:A:182:LEU:C	1:A:182:LEU:HD13	2.31	0.52
1:A:212:ARG:HB2	1:A:247:TRP:CE3	2.45	0.51
1:A:25:PHE:HB2	1:A:71:PRO:HD3	1.93	0.51
1:A:368:LYS:O	1:A:372:ILE:HG13	2.10	0.51
1:B:292:ARG:HD3	1:B:292:ARG:O	2.10	0.51
1:A:320:LEU:C	1:A:322:GLY:H	2.14	0.51
1:B:98:LEU:HD23	5:B:569:HOH:O	2.10	0.51
1:A:130:PRO:HG2	1:A:166:PHE:HZ	1.76	0.51
1:A:269:ASN:C	1:A:269:ASN:HD22	2.12	0.50
1:A:370:THR:HG22	1:A:376:ARG:NH2	2.27	0.50
1:B:360:LYS:NZ	1:B:360:LYS:HB3	2.26	0.50
1:B:35:ALA:N	1:B:56:HIS:HE1	2.03	0.49
1:B:238:VAL:C	1:B:240:ASN:H	2.14	0.49
1:B:94:LEU:C	1:B:94:LEU:HD12	2.32	0.49
1:A:74:LYS:HB2	1:A:75:PRO:CD	2.43	0.49
1:B:112:GLN:HA	1:B:112:GLN:HE21	1.78	0.49
1:B:86:SER:HB2	1:B:92:VAL:HG21	1.95	0.49

*Continued on next page...*

*Continued from previous page...*

Atom-1	Atom-2	Interatomic distance (Å)	Clash overlap (Å)
1:A:212:ARG:HB2	1:A:247:TRP:CD2	2.48	0.49
1:A:142:GLN:HB3	1:A:385:LEU:HD12	1.96	0.48
1:A:98:LEU:N	1:A:98:LEU:HD23	2.29	0.48
1:A:253:HIS:HA	5:A:554:HOH:O	2.12	0.48
1:A:38:LEU:HB3	5:A:449:HOH:O	2.13	0.48
1:A:182:LEU:HD12	1:A:184:PHE:HD2	1.79	0.48
1:A:199:PHE:CE1	1:A:366:LEU:HD22	2.49	0.48
1:B:35:ALA:H	1:B:56:HIS:CE1	2.16	0.48
1:A:206:ALA:HB1	1:A:248:LEU:HD11	1.96	0.48
1:A:26:LYS:HE3	1:A:29:ASP:OD2	2.14	0.47
1:A:142:GLN:HB3	1:A:385:LEU:CD1	2.45	0.47
1:A:244:GLN:OE1	1:A:259:GLY:HA3	2.15	0.47
1:A:269:ASN:C	1:A:269:ASN:ND2	2.68	0.47
1:A:255:ILE:HG22	1:A:263:LEU:HD13	1.95	0.46
1:B:25:PHE:CD2	1:B:60:VAL:HG11	2.50	0.46
1:A:242:CYS:SG	1:A:344:LEU:HD22	2.56	0.46
1:B:118:ASP:O	1:B:122:ARG:HG3	2.15	0.46
1:A:70:LYS:O	1:A:72:HIS:HD2	1.99	0.46
1:A:94:LEU:C	1:A:94:LEU:HD12	2.36	0.46
1:B:205:TRP:HH2	1:B:236:GLU:OE2	1.99	0.45
1:B:212:ARG:HB2	1:B:247:TRP:CD2	2.51	0.45
1:B:143:GLN:NE2	1:B:143:GLN:HA	2.31	0.45
1:B:193:TYR:HD2	1:B:194:PHE:CE1	2.34	0.45
1:A:297:LEU:HD13	1:A:368:LYS:HG2	1.97	0.45
1:B:99:LYS:HD3	1:B:159:SER:OG	2.17	0.45
1:B:43:ASP:HB3	1:B:46:ASN:OD1	2.16	0.45
1:B:336:VAL:CG2	1:B:369:LEU:HD13	2.47	0.45
1:A:100:ALA:HA	1:A:109:ARG:O	2.17	0.45
1:A:107:LYS:HB2	1:A:109:ARG:NH1	2.33	0.44
1:B:183:LEU:HD12	1:B:184:PHE:N	2.33	0.44
1:A:146:LYS:HD2	1:A:385:LEU:HD22	2.00	0.43
1:B:95:PHE:O	1:B:222:LYS:HB3	2.19	0.43
1:B:300:GLN:HE22	1:B:379:ARG:HH22	1.58	0.43
1:B:292:ARG:HD2	5:B:613:HOH:O	2.18	0.43
5:A:461:HOH:O	1:B:225:GLY:HA3	2.18	0.43
1:B:96:GLU:HG3	1:B:120:MET:HB2	2.00	0.43
1:B:280:PRO:HD3	1:B:309:ARG:C	2.39	0.43
1:B:369:LEU:O	1:B:373:GLN:HG3	2.18	0.43
1:B:227:TYR:CD1	1:B:227:TYR:N	2.87	0.43
1:A:126:ARG:NH1	5:A:527:HOH:O	2.51	0.43
1:B:128:THR:HA	5:B:519:HOH:O	2.18	0.43

*Continued on next page...*

Continued from previous page...

Atom-1	Atom-2	Interatomic distance (Å)	Clash overlap (Å)
1:A:182:LEU:CD1	1:A:184:PHE:HD2	2.32	0.43
1:A:256:THR:OG1	1:A:257:GLU:N	2.52	0.42
1:B:222:LYS:NZ	2:B:410:PLP:O3	2.50	0.42
1:A:359:PRO:HB2	1:A:362:ALA:HB3	2.02	0.42
1:B:384:VAL:CG1	1:B:385:LEU:HG	2.44	0.42
1:B:94:LEU:HG	1:B:166:PHE:HB3	2.01	0.42
1:A:180:LYS:HE2	1:A:180:LYS:HB3	1.71	0.42
1:B:248:LEU:HA	1:B:254:GLN:O	2.19	0.42
1:A:257:GLU:OE1	2:A:410:PLP:N1	2.54	0.41
1:B:255:ILE:O	1:B:255:ILE:HG13	2.20	0.41
1:A:108:ILE:HD13	1:A:149:GLN:HB2	1.99	0.41
1:B:344:LEU:N	1:B:344:LEU:HD12	2.36	0.41
1:A:98:LEU:H	1:A:98:LEU:HD23	1.85	0.41
1:B:142:GLN:HE21	1:B:142:GLN:HB3	1.61	0.41
1:B:139:GLU:OE2	1:B:143:GLN:HG2	2.21	0.41
1:B:191:GLY:HA3	5:B:627:HOH:O	2.21	0.41
1:A:30:LEU:HD23	1:A:71:PRO:HG2	2.03	0.41
1:A:193:TYR:CG	1:A:334:ALA:HB1	2.56	0.41
1:B:336:VAL:HG22	1:B:369:LEU:CD1	2.50	0.41
1:A:82:HIS:HA	1:A:83:PRO:HD3	1.96	0.40
1:B:256:THR:HB	1:B:285:ILE:CD1	2.49	0.40
1:A:162:ILE:O	1:A:164:PRO:HD3	2.21	0.40
1:B:268:ILE:O	1:B:324:ARG:NH1	2.51	0.40
1:B:338:CYS:HA	1:B:339:PRO:HD2	1.92	0.40
1:A:182:LEU:HD11	1:A:184:PHE:HB3	2.02	0.40
1:A:199:PHE:CG	1:A:339:PRO:HG2	2.56	0.40
1:A:323:ASN:N	1:A:323:ASN:HD22	2.19	0.40
1:A:323:ASN:N	1:A:323:ASN:ND2	2.70	0.40
1:B:130:PRO:HG2	1:B:166:PHE:HZ	1.86	0.40

There are no symmetry-related clashes.

## 5.3 Torsion angles

### 5.3.1 Protein backbone

In the following table, the Percentiles column shows the percent Ramachandran outliers of the chain as a percentile score with respect to all X-ray entries followed by that with respect to entries of similar resolution.

The Analysed column shows the number of residues for which the backbone conformation was analysed, and the total number of residues.

Mol	Chain	Analysed	Favoured	Allowed	Outliers	Percentiles	
1	A	352/386 (91%)	333 (95%)	17 (5%)	2 (1%)	27	23
1	B	354/386 (92%)	333 (94%)	21 (6%)	0	100	100
All	All	706/772 (92%)	666 (94%)	38 (5%)	2 (0%)	43	43

All (2) Ramachandran outliers are listed below:

Mol	Chain	Res	Type
1	A	153	PRO
1	A	322	GLY

### 5.3.2 Protein sidechains [i](#)

In the following table, the Percentiles column shows the percent sidechain outliers of the chain as a percentile score with respect to all X-ray entries followed by that with respect to entries of similar resolution.

The Analysed column shows the number of residues for which the sidechain conformation was analysed, and the total number of residues.

Mol	Chain	Analysed	Rotameric	Outliers	Percentiles	
1	A	305/334 (91%)	292 (96%)	13 (4%)	32	31
1	B	310/334 (93%)	298 (96%)	12 (4%)	35	35
All	All	615/668 (92%)	590 (96%)	25 (4%)	33	33

All (25) residues with a non-rotameric sidechain are listed below:

Mol	Chain	Res	Type
1	A	38	LEU
1	A	137	LEU
1	A	144	LEU
1	A	147	LEU
1	A	166	PHE
1	A	170	GLU
1	A	176	LYS
1	A	183	LEU
1	A	267	TRP
1	A	269	ASN
1	A	309	ARG
1	A	338	CYS
1	A	361	LEU
1	B	98	LEU

*Continued on next page...*

*Continued from previous page...*

Mol	Chain	Res	Type
1	B	112	GLN
1	B	137	LEU
1	B	166	PHE
1	B	176	LYS
1	B	200	ASN
1	B	235	CYS
1	B	267	TRP
1	B	276	LEU
1	B	336	VAL
1	B	338	CYS
1	B	356	GLU

Some sidechains can be flipped to improve hydrogen bonding and reduce clashes. All (20) such sidechains are listed below:

Mol	Chain	Res	Type
1	A	77	GLN
1	A	112	GLN
1	A	142	GLN
1	A	254	GLN
1	A	269	ASN
1	A	299	HIS
1	A	300	GLN
1	A	323	ASN
1	A	351	HIS
1	B	45	ASN
1	B	56	HIS
1	B	112	GLN
1	B	142	GLN
1	B	143	GLN
1	B	200	ASN
1	B	254	GLN
1	B	262	ASN
1	B	300	GLN
1	B	323	ASN
1	B	351	HIS

### 5.3.3 RNA

There are no RNA molecules in this entry.

## 5.4 Non-standard residues in protein, DNA, RNA chains [i](#)

There are no non-standard protein/DNA/RNA residues in this entry.

## 5.5 Carbohydrates [i](#)

There are no carbohydrates in this entry.

## 5.6 Ligand geometry [i](#)

Of 5 ligands modelled in this entry, 1 is monoatomic - leaving 4 for Mogul analysis.

In the following table, the Counts columns list the number of bonds (or angles) for which Mogul statistics could be retrieved, the number of bonds (or angles) that are observed in the model and the number of bonds (or angles) that are defined in the Chemical Component Dictionary. The Link column lists molecule types, if any, to which the group is linked. The Z score for a bond length (or angle) is the number of standard deviations the observed value is removed from the expected value. A bond length (or angle) with  $|Z| > 2$  is considered an outlier worth inspection. RMSZ is the root-mean-square of all Z scores of the bond lengths (or angles).

Mol	Type	Chain	Res	Link	Bond lengths			Bond angles		
					Counts	RMSZ	# Z  > 2	Counts	RMSZ	# Z  > 2
2	PLP	A	410	1	15,15,16	1.69	2 (13%)	20,22,23	2.09	4 (20%)
3	4MV	A	420	-	4,7,7	0.34	0	4,8,8	0.22	0
2	PLP	B	410	1	15,15,16	1.04	1 (6%)	20,22,23	1.42	5 (25%)
3	4MV	B	420	-	4,7,7	0.29	0	4,8,8	0.21	0

In the following table, the Chirals column lists the number of chiral outliers, the number of chiral centers analysed, the number of these observed in the model and the number defined in the Chemical Component Dictionary. Similar counts are reported in the Torsion and Rings columns. '-' means no outliers of that kind were identified.

Mol	Type	Chain	Res	Link	Chirals	Torsions	Rings
2	PLP	A	410	1	-	0/6/6/8	0/1/1/1
3	4MV	A	420	-	-	0/3/5/5	0/0/0/0
2	PLP	B	410	1	-	0/6/6/8	0/1/1/1
3	4MV	B	420	-	-	0/3/5/5	0/0/0/0

All (3) bond length outliers are listed below:

Mol	Chain	Res	Type	Atoms	Z	Observed(Å)	Ideal(Å)
2	A	410	PLP	C3-C2	-4.70	1.37	1.40
2	B	410	PLP	C2A-C2	2.33	1.54	1.50

*Continued on next page...*

*Continued from previous page...*

Mol	Chain	Res	Type	Atoms	Z	Observed(Å)	Ideal(Å)
2	A	410	PLP	C2A-C2	2.88	1.55	1.50

All (9) bond angle outliers are listed below:

Mol	Chain	Res	Type	Atoms	Z	Observed(°)	Ideal(°)
2	A	410	PLP	O2P-P-O4P	-4.64	94.38	106.73
2	B	410	PLP	C5A-C5-C6	-2.11	115.79	119.34
2	B	410	PLP	O2P-P-O4P	-2.03	101.32	106.73
2	B	410	PLP	O3P-P-O1P	2.14	118.97	110.60
2	A	410	PLP	O3P-P-O1P	2.18	119.11	110.60
2	B	410	PLP	C4A-C4-C5	2.40	123.27	120.85
2	A	410	PLP	C4A-C4-C5	3.05	123.93	120.85
2	B	410	PLP	O4P-C5A-C5	3.17	115.48	109.39
2	A	410	PLP	O4P-C5A-C5	5.66	120.28	109.39

There are no chirality outliers.

There are no torsion outliers.

There are no ring outliers.

2 monomers are involved in 2 short contacts:

Mol	Chain	Res	Type	Clashes	Symm-Clashes
2	A	410	PLP	1	0
2	B	410	PLP	1	0

## 5.7 Other polymers [i](#)

There are no such residues in this entry.

## 5.8 Polymer linkage issues [i](#)

There are no chain breaks in this entry.

## 6 Fit of model and data

### 6.1 Protein, DNA and RNA chains

In the following table, the column labelled ‘#RSRZ > 2’ contains the number (and percentage) of RSRZ outliers, followed by percent RSRZ outliers for the chain as percentile scores relative to all X-ray entries and entries of similar resolution. The OWAB column contains the minimum, median, 95<sup>th</sup> percentile and maximum values of the occupancy-weighted average B-factor per residue. The column labelled ‘Q < 0.9’ lists the number of (and percentage) of residues with an average occupancy less than 0.9.

Mol	Chain	Analysed	<RSRZ>	#RSRZ>2	OWAB(Å <sup>2</sup> )	Q<0.9
1	A	358/386 (92%)	0.43	34 (9%) <b>8</b> <b>11</b>	14, 27, 45, 61	0
1	B	358/386 (92%)	0.17	17 (4%) <b>31</b> <b>37</b>	12, 21, 39, 55	0
All	All	716/772 (92%)	0.30	51 (7%) <b>16</b> <b>20</b>	12, 24, 41, 61	0

All (51) RSRZ outliers are listed below:

Mol	Chain	Res	Type	RSRZ
1	B	46	ASN	6.7
1	A	384	VAL	4.8
1	A	22	VAL	4.7
1	A	192	PRO	4.5
1	A	200	ASN	4.5
1	A	193	TYR	4.4
1	B	239	ASP	4.4
1	A	323	ASN	4.3
1	A	385	LEU	3.8
1	A	348	GLU	3.7
1	A	239	ASP	3.6
1	B	347	GLY	3.6
1	B	194	PHE	3.6
1	A	36	THR	3.4
1	B	45	ASN	3.3
1	A	45	ASN	3.1
1	B	192	PRO	3.1
1	A	347	GLY	3.0
1	A	271	ASP	2.9
1	A	238	VAL	2.8
1	A	48	VAL	2.8
1	A	243	GLN	2.7
1	A	37	ILE	2.6
1	A	103	GLY	2.6

*Continued on next page...*



*Continued from previous page...*

Mol	Chain	Res	Type	RSRZ
1	B	183	LEU	2.5
1	B	199	PHE	2.5
1	B	348	GLU	2.5
1	A	146	LYS	2.5
1	A	43	ASP	2.5
1	A	66	PHE	2.5
1	A	160	LEU	2.5
1	B	385	LEU	2.4
1	B	193	TYR	2.4
1	A	201	PRO	2.4
1	B	66	PHE	2.3
1	A	321	GLU	2.3
1	A	183	LEU	2.3
1	A	106	ASN	2.2
1	A	132	PHE	2.2
1	B	238	VAL	2.2
1	B	36	THR	2.2
1	A	44	PRO	2.1
1	B	43	ASP	2.1
1	A	166	PHE	2.1
1	A	199	PHE	2.1
1	B	294	ILE	2.1
1	A	104	VAL	2.0
1	A	378	GLU	2.0
1	A	141	ILE	2.0
1	A	322	GLY	2.0
1	B	104	VAL	2.0

## 6.2 Non-standard residues in protein, DNA, RNA chains [i](#)

There are no non-standard protein/DNA/RNA residues in this entry.

## 6.3 Carbohydrates [i](#)

There are no carbohydrates in this entry.

## 6.4 Ligands [i](#)

In the following table, the Atoms column lists the number of modelled atoms in the group and the number defined in the chemical component dictionary. The B-factors column lists the minimum,

median, 95<sup>th</sup> percentile and maximum values of B factors of atoms in the group. The column labelled 'Q < 0.9' lists the number of atoms with occupancy less than 0.9.

Mol	Type	Chain	Res	Atoms	RSCC	RSR	B-factors(Å <sup>2</sup> )	Q < 0.9
4	MG	B	430	1/1	0.54	0.33	38,38,38,38	0
3	4MV	A	420	8/8	0.64	0.23	39,41,44,45	0
3	4MV	B	420	8/8	0.82	0.19	28,31,37,37	0
2	PLP	A	410	15/16	0.94	0.11	17,22,25,28	0
2	PLP	B	410	15/16	0.95	0.11	12,16,19,21	0

## 6.5 Other polymers [i](#)

There are no such residues in this entry.