



# Full wwPDB X-ray Structure Validation Report ⓘ

Mar 4, 2024 – 05:14 pm GMT

PDB ID : 8CQ8  
Title : Mycobacterium tuberculosis dihydrofolate reductase in complex with methyl 4-(2,6-diamino-5-(cyclopropylethynyl)pyrimidin-4-yl)benzoate  
Authors : Kirkman, T.J.; Dias, M.V.B.; Coyne, A.G.  
Deposited on : 2023-03-04  
Resolution : 1.80 Å(reported)

This is a Full wwPDB X-ray Structure Validation Report for a publicly released PDB entry.

We welcome your comments at [validation@mail.wwpdb.org](mailto:validation@mail.wwpdb.org)

A user guide is available at

<https://www.wwpdb.org/validation/2017/XrayValidationReportHelp>

with specific help available everywhere you see the ⓘ symbol.

The types of validation reports are described at

<http://www.wwpdb.org/validation/2017/FAQs#types>.

---

The following versions of software and data (see [references ⓘ](#)) were used in the production of this report:

MolProbity : 4.02b-467  
Mogul : 1.8.4, CSD as541be (2020)  
Xtriage (Phenix) : 1.13  
EDS : 2.36  
buster-report : 1.1.7 (2018)  
Percentile statistics : 20191225.v01 (using entries in the PDB archive December 25th 2019)  
Refmac : 5.8.0158  
CCP4 : 7.0.044 (Gargrove)  
Ideal geometry (proteins) : Engh & Huber (2001)  
Ideal geometry (DNA, RNA) : Parkinson et al. (1996)  
Validation Pipeline (wwPDB-VP) : 2.36

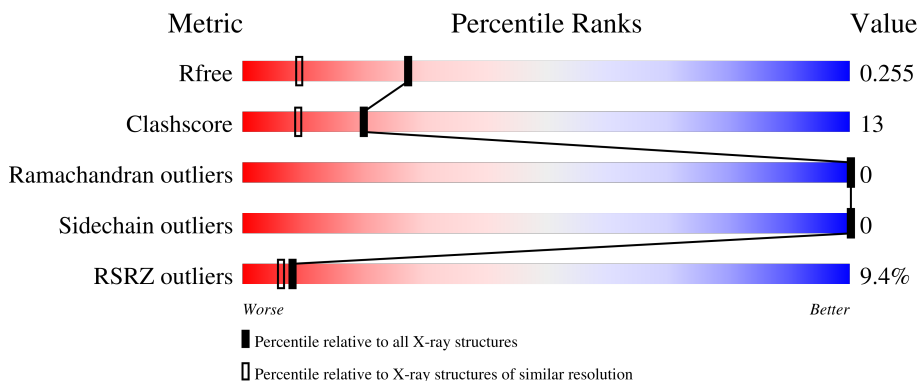
# 1 Overall quality at a glance

The following experimental techniques were used to determine the structure:

*X-RAY DIFFRACTION*

The reported resolution of this entry is 1.80 Å.

Percentile scores (ranging between 0-100) for global validation metrics of the entry are shown in the following graphic. The table shows the number of entries on which the scores are based.



Metric	Whole archive (#Entries)	Similar resolution (#Entries, resolution range(Å))
$R_{free}$	130704	5950 (1.80-1.80)
Clashscore	141614	6793 (1.80-1.80)
Ramachandran outliers	138981	6697 (1.80-1.80)
Sidechain outliers	138945	6696 (1.80-1.80)
RSRZ outliers	127900	5850 (1.80-1.80)

The table below summarises the geometric issues observed across the polymeric chains and their fit to the electron density. The red, orange, yellow and green segments of the lower bar indicate the fraction of residues that contain outliers for  $\geq 3$ , 2, 1 and 0 types of geometric quality criteria respectively. A grey segment represents the fraction of residues that are not modelled. The numeric value for each fraction is indicated below the corresponding segment, with a dot representing fractions  $\leq 5\%$ . The upper red bar (where present) indicates the fraction of residues that have poor fit to the electron density. The numeric value is given above the bar.

Mol	Chain	Length	Quality of chain
1	A	161	 5% 81% 17%
1	B	161	 14% 65% 34%

The following table lists non-polymeric compounds, carbohydrate monomers and non-standard residues in protein, DNA, RNA chains that are outliers for geometric or electron-density-fit criteria:

Mol	Type	Chain	Res	Chirality	Geometry	Clashes	Electron density
6	SO4	B	306	-	-	X	-

## 2 Entry composition [i](#)

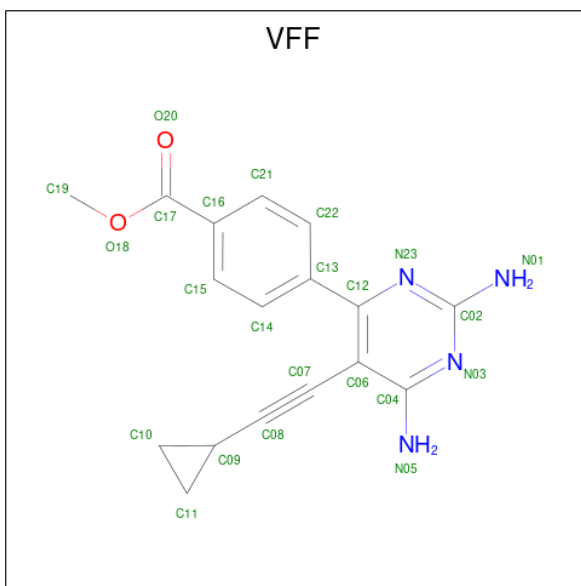
There are 7 unique types of molecules in this entry. The entry contains 2813 atoms, of which 0 are hydrogens and 0 are deuteriums.

In the tables below, the ZeroOcc column contains the number of atoms modelled with zero occupancy, the AltConf column contains the number of residues with at least one atom in alternate conformation and the Trace column contains the number of residues modelled with at most 2 atoms.

- Molecule 1 is a protein called Dihydrofolate reductase.

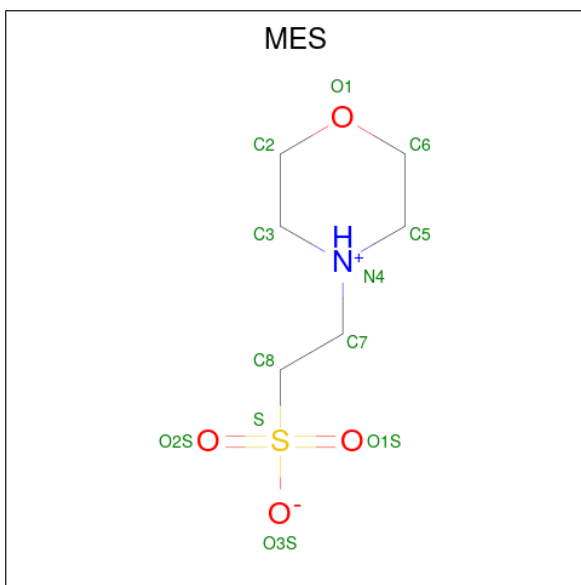
Mol	Chain	Residues	Atoms					ZeroOcc	AltConf	Trace
			Total	C	N	O	S			
1	A	159	Total	C	N	O	S	0	0	0
			1244	783	228	228	5			
1	B	159	Total	C	N	O	S	0	0	0
			1244	783	228	228	5			

- Molecule 2 is methyl 4-[2,6-bis(azanyl)-5-(2-cyclopropylethynyl)pyrimidin-4-yl]benzoate (three-letter code: VFF) (formula:  $C_{17}H_{16}N_4O_2$ ) (labeled as "Ligand of Interest" by depositor).



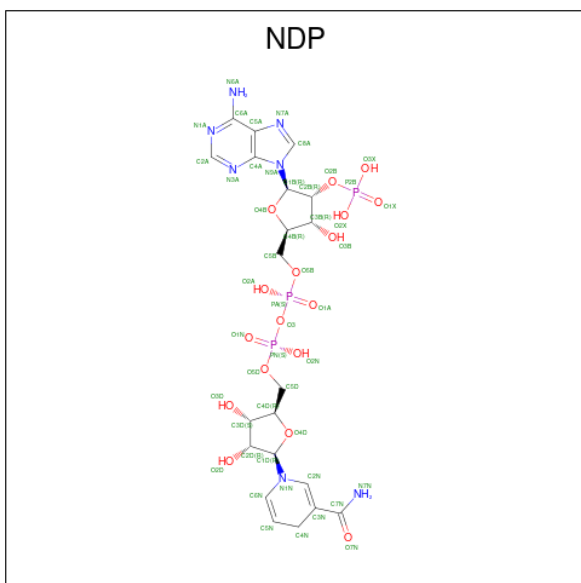
Mol	Chain	Residues	Atoms				ZeroOcc	AltConf
			Total	C	N	O		
2	A	1	Total	C	N	O	0	0
			23	17	4	2		
2	B	1	Total	C	N	O	0	0
			23	17	4	2		

- Molecule 3 is 2-(N-MORPHOLINO)-ETHANESULFONIC ACID (three-letter code: MES) (formula:  $C_6H_{13}NO_4S$ ).



Mol	Chain	Residues	Atoms					ZeroOcc	AltConf
			Total	C	N	O	S		
3	A	1	Total	C	N	O	S	0	0
			12	6	1	4	1		
3	B	1	Total	C	N	O	S	0	0
			12	6	1	4	1		
3	B	1	Total	C	N	O	S	0	0
			12	6	1	4	1		

- Molecule 4 is NADPH DIHYDRO-NICOTINAMIDE-ADENINE-DINUCLEOTIDE PHOSPHATE (three-letter code: NDP) (formula:  $C_{21}H_{30}N_7O_{17}P_3$ ) (labeled as "Ligand of Interest" by depositor).

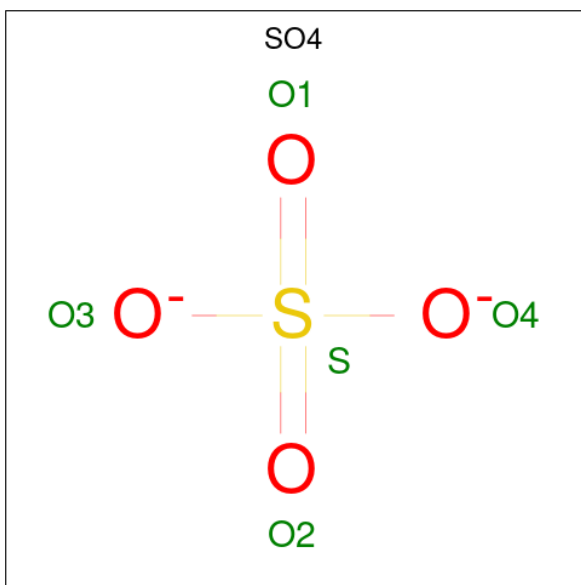


Mol	Chain	Residues	Atoms					ZeroOcc	AltConf
4	A	1	Total	C	N	O	P	0	0
			48	21	7	17	3		
4	B	1	Total	C	N	O	P	0	0
			48	21	7	17	3		

- Molecule 5 is COBALT (II) ION (three-letter code: CO) (formula: Co).

Mol	Chain	Residues	Atoms		ZeroOcc	AltConf
5	A	1	Total	Co	0	0
			1	1		
5	B	1	Total	Co	0	0
			1	1		

- Molecule 6 is SULFATE ION (three-letter code: SO4) (formula: O<sub>4</sub>S).



Mol	Chain	Residues	Atoms			ZeroOcc	AltConf
6	A	1	Total	O	S	0	0
			5	4	1		
6	A	1	Total	O	S	0	0
			5	4	1		
6	B	1	Total	O	S	0	0
			5	4	1		
6	B	1	Total	O	S	0	0
			5	4	1		

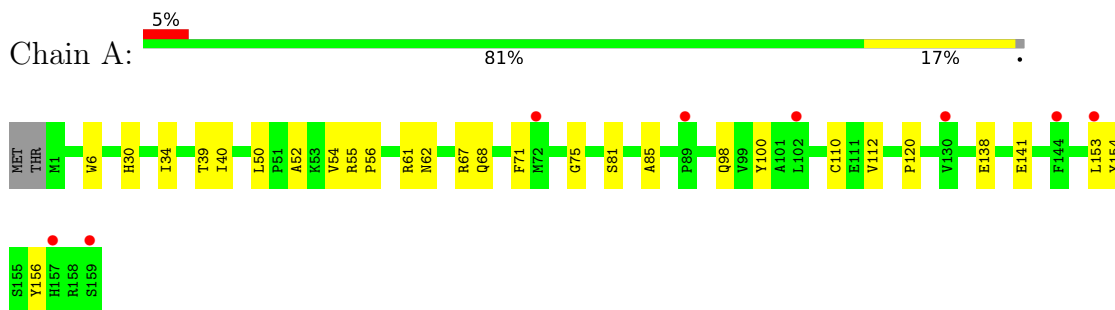
- Molecule 7 is water.

<b>Mol</b>	<b>Chain</b>	<b>Residues</b>	<b>Atoms</b>		<b>ZeroOcc</b>	<b>AltConf</b>
7	A	62	Total 62	O 62	0	0
7	B	63	Total 63	O 63	0	0

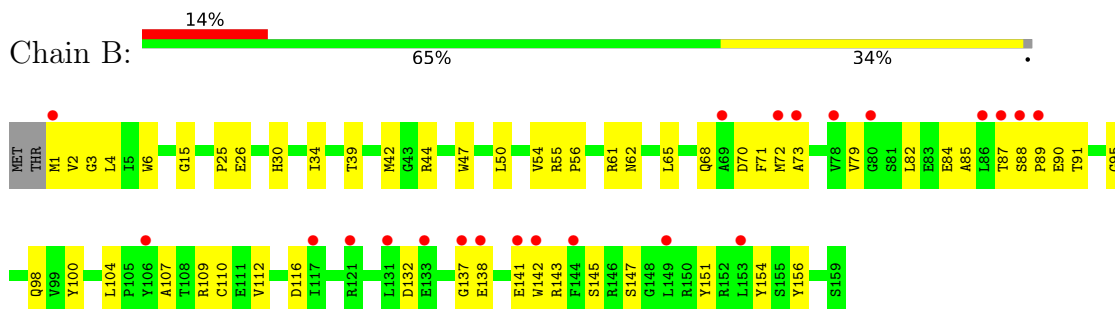
### 3 Residue-property plots [i](#)

These plots are drawn for all protein, RNA, DNA and oligosaccharide chains in the entry. The first graphic for a chain summarises the proportions of the various outlier classes displayed in the second graphic. The second graphic shows the sequence view annotated by issues in geometry and electron density. Residues are color-coded according to the number of geometric quality criteria for which they contain at least one outlier: green = 0, yellow = 1, orange = 2 and red = 3 or more. A red dot above a residue indicates a poor fit to the electron density ( $RSRZ > 2$ ). Stretches of 2 or more consecutive residues without any outlier are shown as a green connector. Residues present in the sample, but not in the model, are shown in grey.

- Molecule 1: Dihydrofolate reductase



- Molecule 1: Dihydrofolate reductase





## 4 Data and refinement statistics

Property	Value	Source
Space group	P 21 21 21	Depositor
Cell constants a, b, c, $\alpha$ , $\beta$ , $\gamma$	60.90Å 71.45Å 72.26Å 90.00° 90.00° 90.00°	Depositor
Resolution (Å)	46.57 – 1.80 46.57 – 1.80	Depositor EDS
% Data completeness (in resolution range)	99.9 (46.57-1.80) 96.8 (46.57-1.80)	Depositor EDS
$R_{merge}$	0.08	Depositor
$R_{sym}$	(Not available)	Depositor
$\langle I/\sigma(I) \rangle$ <sup>1</sup>	2.82 (at 1.79Å)	Xtrriage
Refinement program	PHENIX 1.18.2_3874	Depositor
R, $R_{free}$	0.209 , 0.240 0.217 , 0.255	Depositor DCC
$R_{free}$ test set	1493 reflections (5.00%)	wwPDB-VP
Wilson B-factor (Å <sup>2</sup> )	27.9	Xtrriage
Anisotropy	0.225	Xtrriage
Bulk solvent $k_{sol}$ (e/Å <sup>3</sup> ), $B_{sol}$ (Å <sup>2</sup> )	0.39 , 43.9	EDS
L-test for twinning <sup>2</sup>	$\langle  L  \rangle = 0.43$ , $\langle L^2 \rangle = 0.26$	Xtrriage
Estimated twinning fraction	0.318 for -h,l,k	Xtrriage
$F_o, F_c$ correlation	0.96	EDS
Total number of atoms	2813	wwPDB-VP
Average B, all atoms (Å <sup>2</sup> )	33.0	wwPDB-VP

Xtrriage's analysis on translational NCS is as follows: *The largest off-origin peak in the Patterson function is 6.16% of the height of the origin peak. No significant pseudotranslation is detected.*

<sup>1</sup>Intensities estimated from amplitudes.

<sup>2</sup>Theoretical values of  $\langle |L| \rangle$ ,  $\langle L^2 \rangle$  for acentric reflections are 0.5, 0.333 respectively for untwinned datasets, and 0.375, 0.2 for perfectly twinned datasets.

## 5 Model quality [i](#)

### 5.1 Standard geometry [i](#)

Bond lengths and bond angles in the following residue types are not validated in this section: CO, VFF, MES, NDP, SO4

The Z score for a bond length (or angle) is the number of standard deviations the observed value is removed from the expected value. A bond length (or angle) with  $|Z| > 5$  is considered an outlier worth inspection. RMSZ is the root-mean-square of all Z scores of the bond lengths (or angles).

Mol	Chain	Bond lengths		Bond angles	
		RMSZ	# Z  >5	RMSZ	# Z  >5
1	A	0.48	0/1275	0.72	0/1732
1	B	0.46	0/1275	0.78	5/1732 (0.3%)
All	All	0.47	0/2550	0.75	5/3464 (0.1%)

There are no bond length outliers.

All (5) bond angle outliers are listed below:

Mol	Chain	Res	Type	Atoms	Z	Observed(°)	Ideal(°)
1	B	87	THR	C-N-CA	12.11	151.98	121.70
1	B	72	MET	CB-CG-SD	-7.60	89.60	112.40
1	B	104	LEU	CB-CG-CD1	6.67	122.34	111.00
1	B	104	LEU	CB-CG-CD2	6.30	121.72	111.00
1	B	72	MET	CG-SD-CE	5.54	109.06	100.20

There are no chirality outliers.

There are no planarity outliers.

### 5.2 Too-close contacts [i](#)

In the following table, the Non-H and H(model) columns list the number of non-hydrogen atoms and hydrogen atoms in the chain respectively. The H(added) column lists the number of hydrogen atoms added and optimized by MolProbity. The Clashes column lists the number of clashes within the asymmetric unit, whereas Symm-Clashes lists symmetry-related clashes.

Mol	Chain	Non-H	H(model)	H(added)	Clashes	Symm-Clashes
1	A	1244	0	1223	23	0
1	B	1244	0	1222	46	0
2	A	23	0	0	1	0
2	B	23	0	0	1	0

*Continued on next page...*

*Continued from previous page...*

Mol	Chain	Non-H	H(model)	H(added)	Clashes	Symm-Clashes
3	A	12	0	12	2	0
3	B	24	0	24	3	0
4	A	48	0	26	2	0
4	B	48	0	26	3	0
5	A	1	0	0	0	0
5	B	1	0	0	0	0
6	A	10	0	0	0	0
6	B	10	0	0	2	0
7	A	62	0	0	5	3
7	B	63	0	0	8	4
All	All	2813	0	2533	66	4

The all-atom clashscore is defined as the number of clashes found per 1000 atoms (including hydrogen atoms). The all-atom clashscore for this structure is 13.

All (66) close contacts within the same asymmetric unit are listed below, sorted by their clash magnitude.

Atom-1	Atom-2	Interatomic distance (Å)	Clash overlap (Å)
1:B:2:VAL:O	7:B:401:HOH:O	1.93	0.87
1:B:70:ASP:O	7:B:402:HOH:O	2.00	0.79
6:B:306:SO4:O1	7:B:403:HOH:O	2.01	0.77
1:B:54:VAL:HG11	3:B:302:MES:H62	1.71	0.72
1:B:1:MET:N	7:B:405:HOH:O	2.15	0.72
1:B:1:MET:N	1:B:89:PRO:O	2.25	0.68
1:B:68:GLN:HB2	1:B:71:PHE:HB2	1.76	0.68
1:A:120:PRO:O	7:A:401:HOH:O	2.10	0.68
1:B:88:SER:HB2	1:B:91:THR:OG1	1.93	0.67
1:A:54:VAL:HG11	3:A:302:MES:H62	1.77	0.66
1:A:81:SER:HB3	7:A:405:HOH:O	1.96	0.65
1:A:112:VAL:HB	1:A:154:TYR:HB2	1.79	0.65
1:B:132:ASP:OD2	7:B:404:HOH:O	2.13	0.65
1:A:85:ALA:O	7:A:402:HOH:O	2.14	0.64
1:A:138:GLU:HB3	1:B:143:ARG:HH12	1.63	0.63
1:B:50:LEU:O	1:B:55:ARG:NH1	2.32	0.62
1:A:40:ILE:HD11	1:A:62:ASN:OD1	1.99	0.62
1:A:110:CYS:HB2	1:A:156:TYR:HB2	1.85	0.59
1:B:90:GLU:N	7:B:407:HOH:O	2.30	0.59
1:A:30:HIS:CE1	1:A:34:ILE:HD11	2.39	0.58
1:A:68:GLN:HB2	1:A:71:PHE:HB2	1.85	0.58
1:B:56:PRO:HB2	1:B:62:ASN:ND2	2.19	0.57
1:A:153:LEU:HB2	1:B:138:GLU:OE2	2.05	0.57

*Continued on next page...*

*Continued from previous page...*

Atom-1	Atom-2	Interatomic distance (Å)	Clash overlap (Å)
1:B:3:GLY:HA2	7:B:401:HOH:O	2.04	0.57
1:B:50:LEU:HD21	2:B:301:VFF:C11	2.35	0.56
1:B:47:TRP:CE2	1:B:73:ALA:HB1	2.40	0.56
1:B:143:ARG:N	1:B:151:TYR:O	2.37	0.55
1:B:26:GLU:OE2	1:B:145:SER:OG	2.15	0.54
1:B:4:LEU:HD13	1:B:107:ALA:HB2	1.89	0.54
1:B:154:TYR:HB3	1:B:156:TYR:CE1	2.45	0.52
1:B:79:VAL:HG21	1:B:85:ALA:HB2	1.92	0.51
1:B:98:GLN:HB2	4:B:304:NDP:O1A	2.10	0.51
1:B:30:HIS:CE1	1:B:34:ILE:HD11	2.46	0.51
1:B:112:VAL:HB	1:B:154:TYR:HB2	1.92	0.50
1:B:137:GLY:HA3	1:B:156:TYR:CE2	2.46	0.50
1:A:138:GLU:OE1	7:A:403:HOH:O	2.20	0.49
1:B:137:GLY:HA3	1:B:156:TYR:CD2	2.47	0.49
1:B:15:GLY:HA3	4:B:304:NDP:H1D	1.95	0.48
1:B:47:TRP:CZ2	1:B:73:ALA:HB1	2.49	0.48
1:B:44:ARG:NH2	6:B:306:SO4:O2	2.42	0.47
1:A:138:GLU:HB3	1:B:143:ARG:NH1	2.29	0.46
1:B:110:CYS:HB2	1:B:156:TYR:HB2	1.97	0.46
1:B:54:VAL:CG1	3:B:302:MES:H62	2.44	0.46
1:B:6:TRP:HB3	1:B:100:TYR:CZ	2.51	0.45
1:A:98:GLN:HB2	4:A:303:NDP:O2A	2.17	0.45
1:A:39:THR:OG1	1:A:61:ARG:HD3	2.17	0.44
1:B:79:VAL:HB	1:B:84:GLU:HB2	1.99	0.44
1:B:116:ASP:HB2	1:B:142:TRP:CZ3	2.52	0.44
1:A:52:ALA:HA	1:A:55:ARG:HG2	1.99	0.44
1:B:25:PRO:HD3	1:B:147:SER:HB3	1.99	0.44
1:A:56:PRO:HD3	1:A:75:GLY:HA3	1.99	0.44
1:B:82:LEU:O	1:B:85:ALA:N	2.49	0.43
1:A:50:LEU:HD21	2:A:301:VFF:C11	2.49	0.42
1:B:109:ARG:N	7:B:401:HOH:O	2.12	0.42
1:A:67:ARG:HG2	4:A:303:NDP:C2A	2.49	0.42
1:A:67:ARG:NH1	7:A:415:HOH:O	2.52	0.42
1:B:39:THR:HA	1:B:61:ARG:HB3	2.01	0.42
1:A:6:TRP:HB3	1:A:100:TYR:CZ	2.56	0.41
1:B:65:LEU:O	4:B:304:NDP:H1B	2.20	0.41
1:B:42:MET:HA	1:B:95:GLY:O	2.20	0.41
1:A:141:GLU:OE2	1:B:141:GLU:HB2	2.21	0.41
1:B:47:TRP:CE2	1:B:55:ARG:HD2	2.56	0.41
1:B:54:VAL:HG11	3:B:302:MES:H21	2.03	0.40
1:B:34:ILE:HD13	1:B:34:ILE:HG21	1.86	0.40

*Continued on next page...*

Continued from previous page...

Atom-1	Atom-2	Interatomic distance (Å)	Clash overlap (Å)
1:B:54:VAL:CG1	1:B:54:VAL:O	2.69	0.40
1:A:54:VAL:HG11	3:A:302:MES:H21	2.03	0.40

All (4) symmetry-related close contacts are listed below. The label for Atom-2 includes the symmetry operator and encoded unit-cell translations to be applied.

Atom-1	Atom-2	Interatomic distance (Å)	Clash overlap (Å)
7:B:402:HOH:O	7:B:406:HOH:O[2_654]	1.89	0.31
7:A:418:HOH:O	7:B:450:HOH:O[2_555]	2.01	0.19
7:A:449:HOH:O	7:B:448:HOH:O[3_655]	2.03	0.17
7:A:425:HOH:O	7:B:426:HOH:O[2_555]	2.16	0.04

## 5.3 Torsion angles [i](#)

### 5.3.1 Protein backbone [i](#)

In the following table, the Percentiles column shows the percent Ramachandran outliers of the chain as a percentile score with respect to all X-ray entries followed by that with respect to entries of similar resolution.

The Analysed column shows the number of residues for which the backbone conformation was analysed, and the total number of residues.

Mol	Chain	Analysed	Favoured	Allowed	Outliers	Percentiles	
1	A	157/161 (98%)	153 (98%)	4 (2%)	0	100	100
1	B	157/161 (98%)	151 (96%)	6 (4%)	0	100	100
All	All	314/322 (98%)	304 (97%)	10 (3%)	0	100	100

There are no Ramachandran outliers to report.

### 5.3.2 Protein sidechains [i](#)

In the following table, the Percentiles column shows the percent sidechain outliers of the chain as a percentile score with respect to all X-ray entries followed by that with respect to entries of similar resolution.

The Analysed column shows the number of residues for which the sidechain conformation was analysed, and the total number of residues.

Mol	Chain	Analysed	Rotameric	Outliers	Percentiles	
1	A	127/129 (98%)	127 (100%)	0	100	100
1	B	127/129 (98%)	127 (100%)	0	100	100
All	All	254/258 (98%)	254 (100%)	0	100	100

There are no protein residues with a non-rotameric sidechain to report.

Sometimes sidechains can be flipped to improve hydrogen bonding and reduce clashes. There are no such sidechains identified.

### 5.3.3 RNA [i](#)

There are no RNA molecules in this entry.

### 5.4 Non-standard residues in protein, DNA, RNA chains [i](#)

There are no non-standard protein/DNA/RNA residues in this entry.

### 5.5 Carbohydrates [i](#)

There are no monosaccharides in this entry.

### 5.6 Ligand geometry [i](#)

Of 13 ligands modelled in this entry, 2 are monoatomic - leaving 11 for Mogul analysis.

In the following table, the Counts columns list the number of bonds (or angles) for which Mogul statistics could be retrieved, the number of bonds (or angles) that are observed in the model and the number of bonds (or angles) that are defined in the Chemical Component Dictionary. The Link column lists molecule types, if any, to which the group is linked. The Z score for a bond length (or angle) is the number of standard deviations the observed value is removed from the expected value. A bond length (or angle) with  $|Z| > 2$  is considered an outlier worth inspection. RMSZ is the root-mean-square of all Z scores of the bond lengths (or angles).

Mol	Type	Chain	Res	Link	Bond lengths			Bond angles		
					Counts	RMSZ	# Z  > 2	Counts	RMSZ	# Z  > 2
6	SO4	A	305	-	4,4,4	0.24	0	6,6,6	0.26	0
2	VFF	B	301	-	25,25,25	1.59	6 (24%)	34,35,35	3.12	7 (20%)
3	MES	A	302	-	12,12,12	2.21	1 (8%)	14,16,16	2.27	4 (28%)
4	NDP	A	303	-	45,52,52	2.10	9 (20%)	53,80,80	1.62	9 (16%)
3	MES	B	302	-	12,12,12	2.05	1 (8%)	14,16,16	1.87	2 (14%)

Mol	Type	Chain	Res	Link	Bond lengths			Bond angles		
					Counts	RMSZ	# Z  > 2	Counts	RMSZ	# Z  > 2
4	NDP	B	304	-	45,52,52	2.29	6 (13%)	53,80,80	1.59	9 (16%)
6	SO4	B	307	-	4,4,4	0.15	0	6,6,6	0.10	0
6	SO4	A	306	-	4,4,4	0.19	0	6,6,6	0.26	0
2	VFF	A	301	-	25,25,25	1.49	6 (24%)	34,35,35	3.10	9 (26%)
3	MES	B	303	-	12,12,12	1.83	3 (25%)	14,16,16	2.82	7 (50%)
6	SO4	B	306	-	4,4,4	0.10	0	6,6,6	0.32	0

In the following table, the Chirals column lists the number of chiral outliers, the number of chiral centers analysed, the number of these observed in the model and the number defined in the Chemical Component Dictionary. Similar counts are reported in the Torsion and Rings columns. '-' means no outliers of that kind were identified.

Mol	Type	Chain	Res	Link	Chirals	Torsions	Rings
2	VFF	B	301	-	-	6/12/17/17	0/3/3/3
3	MES	A	302	-	-	1/6/14/14	0/1/1/1
4	NDP	A	303	-	-	4/30/77/77	0/5/5/5
3	MES	B	302	-	-	2/6/14/14	0/1/1/1
4	NDP	B	304	-	-	3/30/77/77	0/5/5/5
2	VFF	A	301	-	-	1/12/17/17	0/3/3/3
3	MES	B	303	-	-	2/6/14/14	0/1/1/1

All (32) bond length outliers are listed below:

Mol	Chain	Res	Type	Atoms	Z	Observed(Å)	Ideal(Å)
4	B	304	NDP	P2B-O2B	12.51	1.82	1.59
4	A	303	NDP	P2B-O2B	10.70	1.79	1.59
3	A	302	MES	C8-S	-7.34	1.67	1.77
3	B	302	MES	C8-S	-6.72	1.68	1.77
3	B	303	MES	C8-S	-5.12	1.70	1.77
4	B	304	NDP	PN-O5D	4.03	1.75	1.59
4	A	303	NDP	PN-O5D	3.59	1.73	1.59
2	B	301	VFF	C06-C07	-3.57	1.38	1.43
4	A	303	NDP	O2B-C2B	-3.34	1.32	1.44
4	B	304	NDP	O2B-C2B	-3.16	1.32	1.44
2	A	301	VFF	C02-N01	3.14	1.40	1.33
2	B	301	VFF	C07-C08	-3.00	1.16	1.19
2	B	301	VFF	C02-N01	2.73	1.39	1.33
3	B	303	MES	O2S-S	2.68	1.52	1.45
4	A	303	NDP	C7N-N7N	2.67	1.40	1.33
4	B	304	NDP	C2A-N1A	2.65	1.38	1.33

Continued on next page...

*Continued from previous page...*

Mol	Chain	Res	Type	Atoms	Z	Observed(Å)	Ideal(Å)
2	B	301	VFF	C04-N03	2.63	1.38	1.35
2	A	301	VFF	C06-C07	-2.62	1.39	1.43
4	B	304	NDP	C4A-N3A	2.59	1.39	1.35
4	A	303	NDP	C4A-N3A	2.57	1.39	1.35
2	A	301	VFF	C13-C12	2.55	1.52	1.49
2	A	301	VFF	C04-N03	2.54	1.38	1.35
4	A	303	NDP	O4B-C4B	-2.52	1.39	1.45
4	A	303	NDP	O5B-C5B	-2.24	1.36	1.44
2	B	301	VFF	C13-C12	2.23	1.51	1.49
4	A	303	NDP	C3B-C2B	2.19	1.57	1.52
2	A	301	VFF	C02-N03	2.19	1.39	1.35
3	B	303	MES	O1S-S	2.18	1.51	1.45
2	B	301	VFF	C02-N03	2.18	1.39	1.35
2	A	301	VFF	C07-C08	-2.11	1.17	1.19
4	A	303	NDP	C2A-N1A	2.09	1.37	1.33
4	B	304	NDP	O4B-C4B	-2.09	1.40	1.45

All (47) bond angle outliers are listed below:

Mol	Chain	Res	Type	Atoms	Z	Observed(°)	Ideal(°)
2	B	301	VFF	C10-C09-C08	11.50	150.27	119.06
2	A	301	VFF	C10-C09-C08	11.27	149.64	119.06
2	A	301	VFF	C11-C09-C08	10.35	147.13	119.06
2	B	301	VFF	C11-C09-C08	10.07	146.40	119.06
3	A	302	MES	C5-N4-C3	6.52	123.51	108.83
3	B	303	MES	O1S-S-C8	6.45	114.68	106.92
4	B	304	NDP	PN-O3-PA	-5.74	113.14	132.83
4	A	303	NDP	PN-O3-PA	-5.34	114.51	132.83
3	B	302	MES	C5-N4-C3	5.22	120.59	108.83
2	B	301	VFF	O18-C17-C16	4.60	119.32	112.34
2	B	301	VFF	O18-C17-O20	-4.56	114.53	123.45
2	A	301	VFF	O18-C17-C16	4.15	118.64	112.34
3	B	303	MES	O3S-S-O1S	-3.80	101.99	111.27
2	A	301	VFF	O18-C17-O20	-3.62	116.36	123.45
4	A	303	NDP	O2B-P2B-O1X	-3.61	95.45	109.39
3	B	303	MES	C2-C3-N4	-3.51	104.78	110.10
3	B	303	MES	O2S-S-C8	3.42	111.03	106.92
4	B	304	NDP	O2B-P2B-O1X	-3.31	96.61	109.39
3	B	302	MES	O3S-S-C8	3.30	111.10	105.77
2	B	301	VFF	C06-C07-C08	-3.28	170.76	176.47
2	A	301	VFF	C09-C08-C07	-3.10	173.56	177.58
3	B	303	MES	C7-N4-C3	3.01	118.93	111.23

*Continued on next page...*



Continued from previous page...

Mol	Chain	Res	Type	Atoms	Z	Observed(°)	Ideal(°)
3	B	303	MES	C5-N4-C3	2.96	115.49	108.83
2	B	301	VFF	C06-C04-N05	2.90	124.96	121.62
3	A	302	MES	O3S-S-C8	2.81	110.31	105.77
4	A	303	NDP	PA-O5B-C5B	-2.67	106.00	121.68
4	A	303	NDP	O5D-PN-O1N	-2.66	98.67	109.07
4	B	304	NDP	O5D-PN-O1N	-2.62	98.84	109.07
4	B	304	NDP	O3X-P2B-O2X	2.60	117.56	107.64
4	A	303	NDP	O3X-P2B-O2X	2.55	117.38	107.64
3	A	302	MES	O1-C2-C3	-2.52	106.25	111.80
4	B	304	NDP	PA-O5B-C5B	-2.34	107.96	121.68
4	B	304	NDP	O2A-PA-O1A	2.30	123.60	112.24
2	A	301	VFF	C06-C07-C08	-2.26	172.53	176.47
3	B	303	MES	O2S-S-O1S	-2.26	106.13	113.95
4	A	303	NDP	PN-O5D-C5D	-2.25	108.49	121.68
3	A	302	MES	O1S-S-C8	-2.20	104.27	106.92
4	A	303	NDP	O2A-PA-O1A	2.20	123.11	112.24
4	B	304	NDP	C2A-N1A-C6A	-2.17	115.05	118.75
2	B	301	VFF	C13-C12-C06	-2.14	120.53	123.09
4	B	304	NDP	PN-O5D-C5D	-2.13	109.19	121.68
4	A	303	NDP	C4A-C5A-N7A	2.09	111.58	109.40
2	A	301	VFF	N05-C04-N03	-2.08	114.09	117.03
2	A	301	VFF	N01-C02-N23	2.06	120.46	117.25
2	A	301	VFF	C12-C06-C04	-2.03	116.80	119.09
4	A	303	NDP	O2X-P2B-O1X	2.03	118.62	110.68
4	B	304	NDP	O3X-P2B-O2B	-2.01	97.01	105.99

There are no chirality outliers.

All (19) torsion outliers are listed below:

Mol	Chain	Res	Type	Atoms
2	B	301	VFF	C12-C06-C07-C08
2	B	301	VFF	C06-C07-C08-C09
3	B	302	MES	C7-C8-S-O3S
2	B	301	VFF	C06-C12-C13-C22
2	B	301	VFF	N23-C12-C13-C22
3	B	303	MES	C8-C7-N4-C3
3	B	303	MES	C8-C7-N4-C5
2	B	301	VFF	C06-C12-C13-C14
2	B	301	VFF	N23-C12-C13-C14
4	A	303	NDP	C2D-C1D-N1N-C2N
4	A	303	NDP	C3B-C4B-C5B-O5B
4	A	303	NDP	O4D-C1D-N1N-C2N

Continued on next page...

*Continued from previous page...*

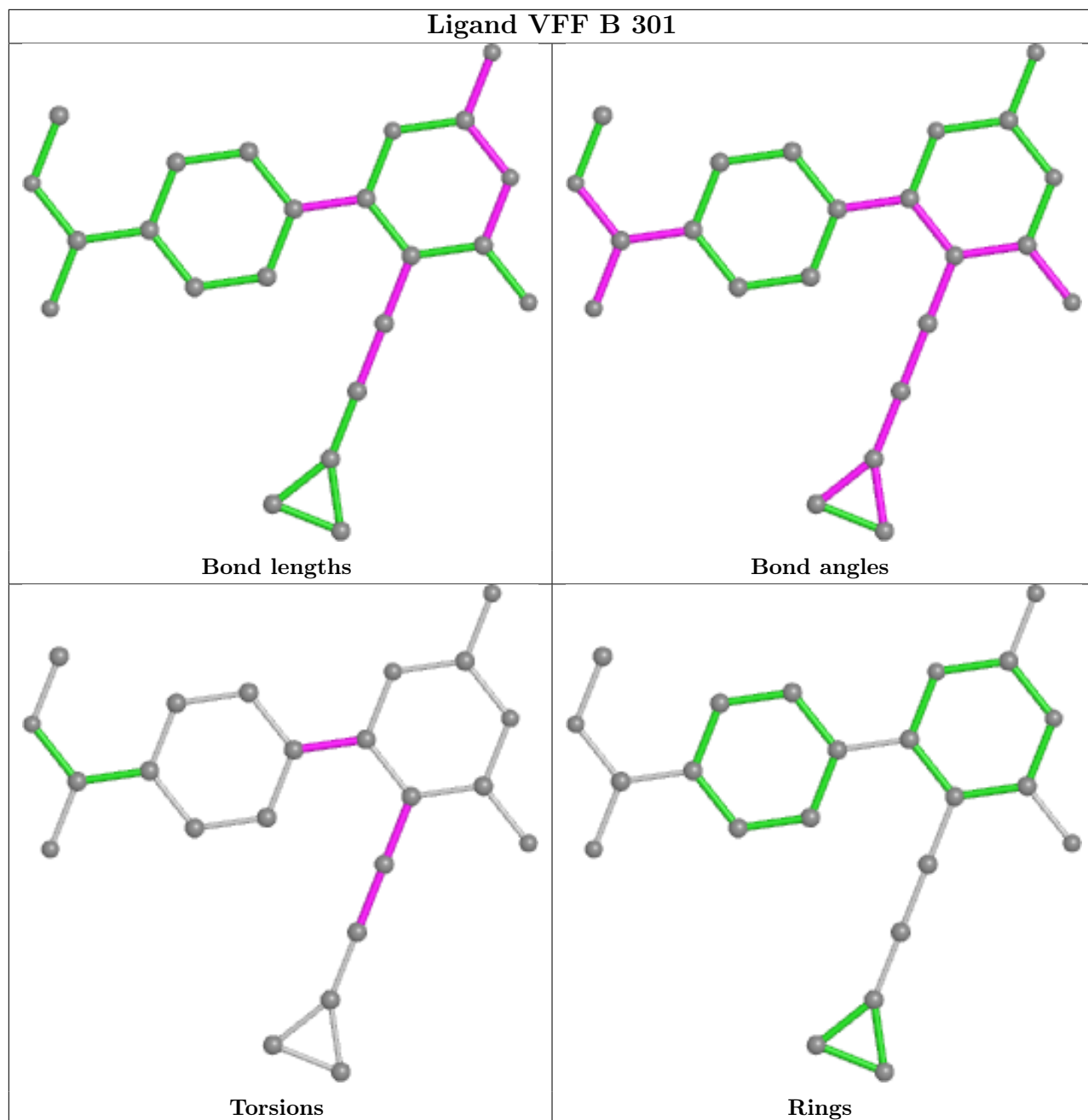
Mol	Chain	Res	Type	Atoms
4	B	304	NDP	O4D-C1D-N1N-C2N
4	B	304	NDP	C2D-C1D-N1N-C2N
4	A	303	NDP	C2D-C1D-N1N-C6N
4	B	304	NDP	C3D-C4D-C5D-O5D
2	A	301	VFF	C12-C06-C07-C08
3	B	302	MES	C7-C8-S-O1S
3	A	302	MES	C8-C7-N4-C3

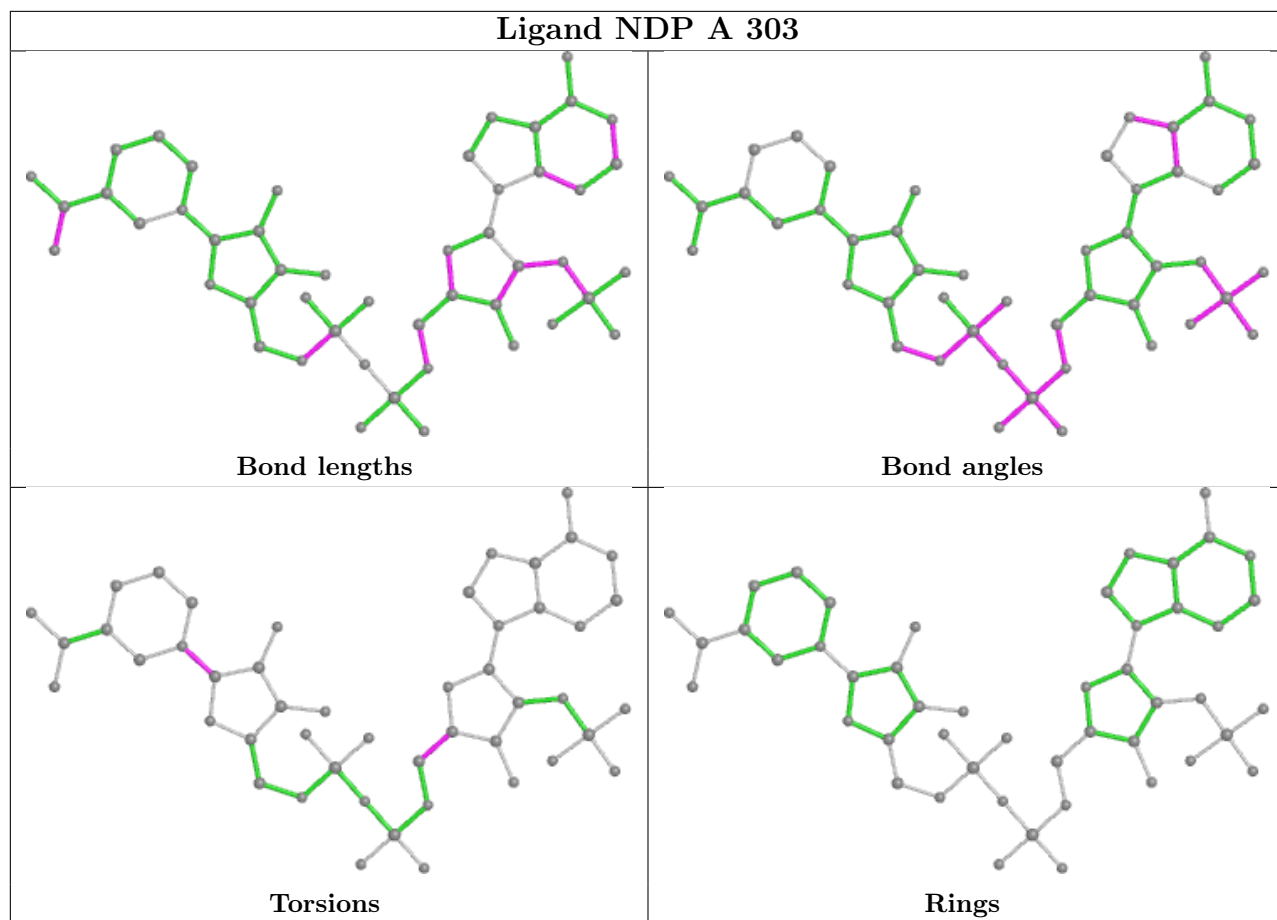
There are no ring outliers.

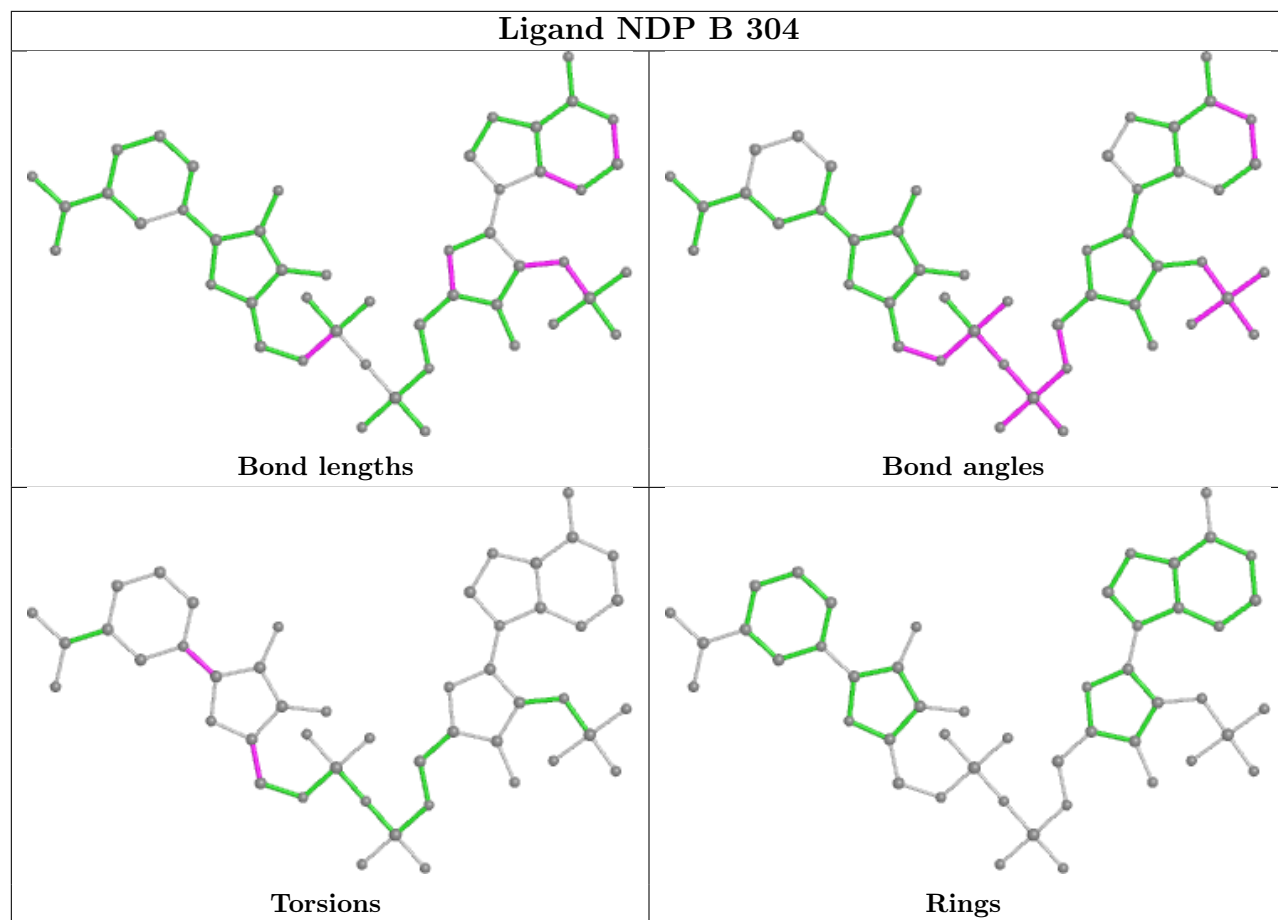
7 monomers are involved in 14 short contacts:

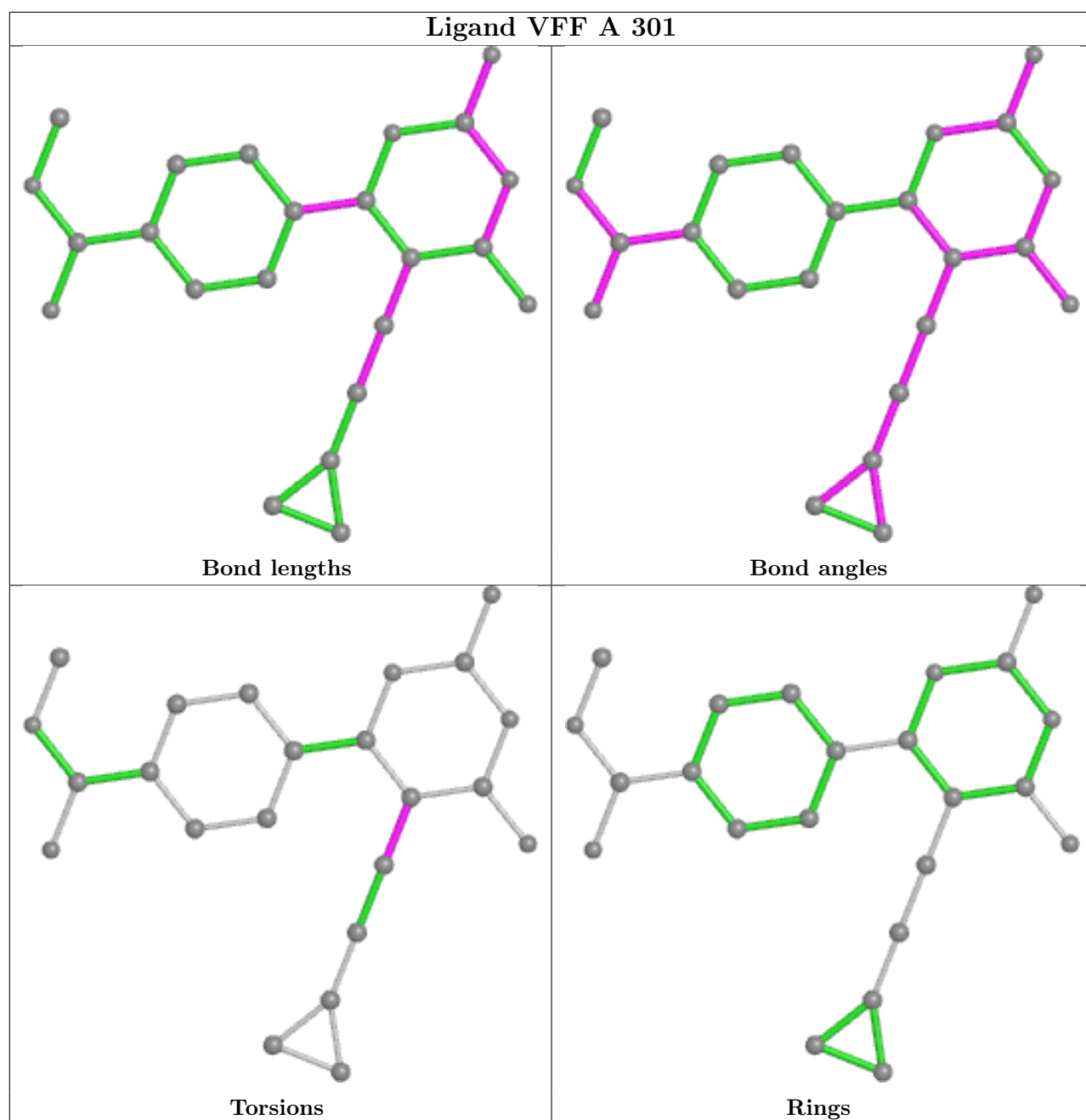
Mol	Chain	Res	Type	Clashes	Symm-Clashes
2	B	301	VFF	1	0
3	A	302	MES	2	0
4	A	303	NDP	2	0
3	B	302	MES	3	0
4	B	304	NDP	3	0
2	A	301	VFF	1	0
6	B	306	SO4	2	0

The following is a two-dimensional graphical depiction of Mogul quality analysis of bond lengths, bond angles, torsion angles, and ring geometry for all instances of the Ligand of Interest. In addition, ligands with molecular weight > 250 and outliers as shown on the validation Tables will also be included. For torsion angles, if less than 5% of the Mogul distribution of torsion angles is within 10 degrees of the torsion angle in question, then that torsion angle is considered an outlier. Any bond that is central to one or more torsion angles identified as an outlier by Mogul will be highlighted in the graph. For rings, the root-mean-square deviation (RMSD) between the ring in question and similar rings identified by Mogul is calculated over all ring torsion angles. If the average RMSD is greater than 60 degrees and the minimal RMSD between the ring in question and any Mogul-identified rings is also greater than 60 degrees, then that ring is considered an outlier. The outliers are highlighted in purple. The color gray indicates Mogul did not find sufficient equivalents in the CSD to analyse the geometry.









## 5.7 Other polymers [i](#)

There are no such residues in this entry.

## 5.8 Polymer linkage issues [i](#)

There are no chain breaks in this entry.

## 6 Fit of model and data

### 6.1 Protein, DNA and RNA chains

In the following table, the column labelled ‘#RSRZ> 2’ contains the number (and percentage) of RSRZ outliers, followed by percent RSRZ outliers for the chain as percentile scores relative to all X-ray entries and entries of similar resolution. The OWAB column contains the minimum, median, 95<sup>th</sup> percentile and maximum values of the occupancy-weighted average B-factor per residue. The column labelled ‘Q< 0.9’ lists the number of (and percentage) of residues with an average occupancy less than 0.9.

Mol	Chain	Analysed	<RSRZ>	#RSRZ>2	OWAB(Å <sup>2</sup> )	Q<0.9
1	A	159/161 (98%)	0.70	8 (5%) 28 23	21, 30, 42, 58	0
1	B	159/161 (98%)	1.08	22 (13%) 2 2	20, 32, 55, 110	0
All	All	318/322 (98%)	0.89	30 (9%) 8 6	20, 31, 52, 110	0

All (30) RSRZ outliers are listed below:

Mol	Chain	Res	Type	RSRZ
1	B	87	THR	9.9
1	B	138	GLU	6.0
1	B	72	MET	4.3
1	B	69	ALA	4.2
1	B	80	GLY	4.1
1	B	117	ILE	3.8
1	B	149	LEU	3.8
1	B	73	ALA	3.6
1	B	86	LEU	3.4
1	B	144	PHE	3.2
1	A	159	SER	2.9
1	B	137	GLY	2.8
1	B	78	VAL	2.8
1	A	157	HIS	2.7
1	B	133	GLU	2.7
1	A	102	LEU	2.6
1	A	89	PRO	2.5
1	B	89	PRO	2.4
1	B	153	LEU	2.3
1	A	72	MET	2.3
1	B	142	TRP	2.3
1	B	106	TYR	2.3
1	B	141	GLU	2.3
1	B	121	ARG	2.3

*Continued on next page...*

*Continued from previous page...*

Mol	Chain	Res	Type	RSRZ
1	B	131	LEU	2.3
1	B	1	MET	2.2
1	B	88	SER	2.2
1	A	144	PHE	2.1
1	A	130	VAL	2.0
1	A	153	LEU	2.0

## 6.2 Non-standard residues in protein, DNA, RNA chains [i](#)

There are no non-standard protein/DNA/RNA residues in this entry.

## 6.3 Carbohydrates [i](#)

There are no monosaccharides in this entry.

## 6.4 Ligands [i](#)

In the following table, the Atoms column lists the number of modelled atoms in the group and the number defined in the chemical component dictionary. The B-factors column lists the minimum, median, 95<sup>th</sup> percentile and maximum values of B factors of atoms in the group. The column labelled 'Q< 0.9' lists the number of atoms with occupancy less than 0.9.

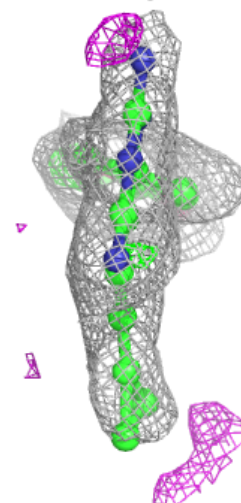
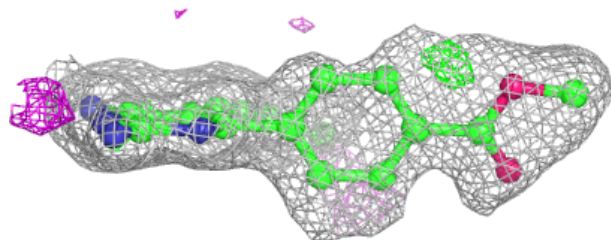
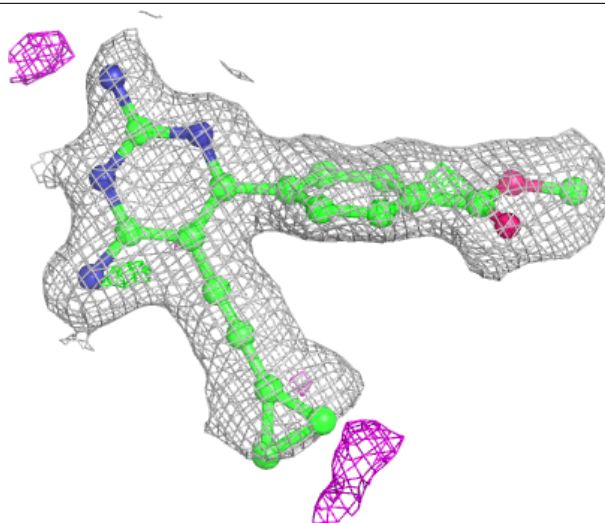
Mol	Type	Chain	Res	Atoms	RSCC	RSR	B-factors(Å <sup>2</sup> )	Q<0.9
3	MES	B	303	12/12	0.82	0.21	33,38,54,66	0
2	VFF	B	301	23/23	0.83	0.17	22,24,30,34	0
6	SO4	A	306	5/5	0.85	0.22	42,44,56,58	0
2	VFF	A	301	23/23	0.86	0.17	20,23,35,36	0
6	SO4	B	307	5/5	0.86	0.18	64,66,75,76	0
6	SO4	A	305	5/5	0.88	0.13	41,44,51,55	0
3	MES	A	302	12/12	0.89	0.21	29,40,43,45	0
6	SO4	B	306	5/5	0.92	0.13	50,51,55,60	0
3	MES	B	302	12/12	0.93	0.16	25,35,39,40	0
4	NDP	A	303	48/48	0.93	0.12	20,25,32,35	0
4	NDP	B	304	48/48	0.94	0.12	21,27,35,37	0
5	CO	B	305	1/1	0.96	0.07	30,30,30,30	0
5	CO	A	304	1/1	0.99	0.07	30,30,30,30	0

The following is a graphical depiction of the model fit to experimental electron density of all instances of the Ligand of Interest. In addition, ligands with molecular weight > 250 and outliers as shown on the geometry validation Tables will also be included. Each fit is shown from different orientation to approximate a three-dimensional view.



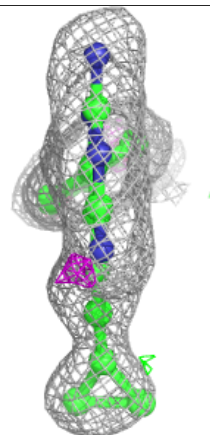
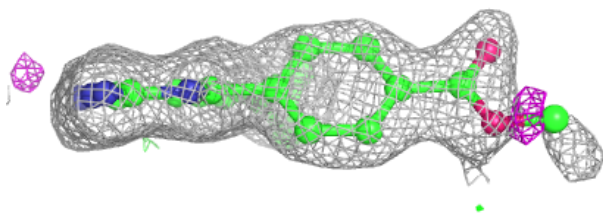
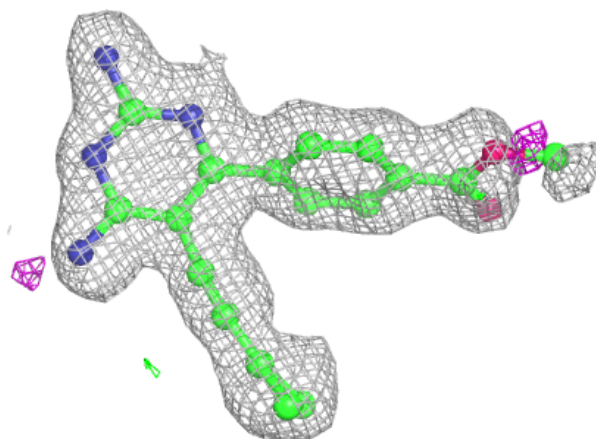
**Electron density around VFF B 301:**

$2mF_o-DF_c$  (at 0.7 rmsd) in gray  
 $mF_o-DF_c$  (at 3 rmsd) in purple (negative)  
and green (positive)

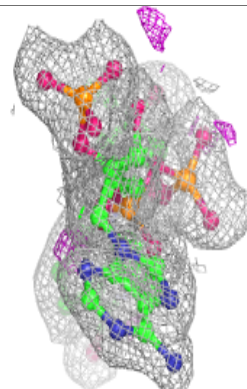
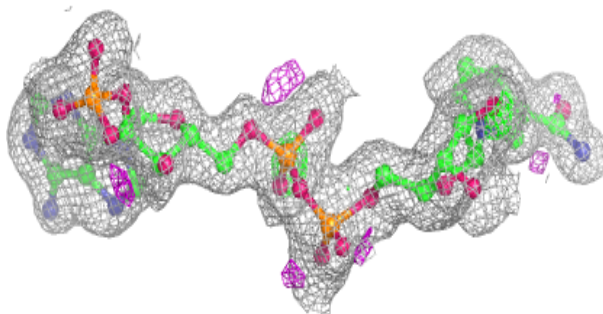
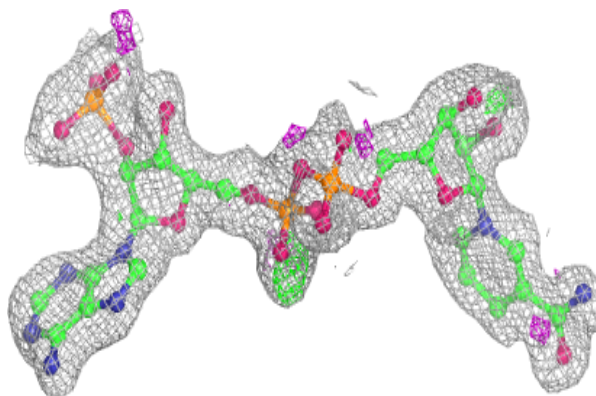


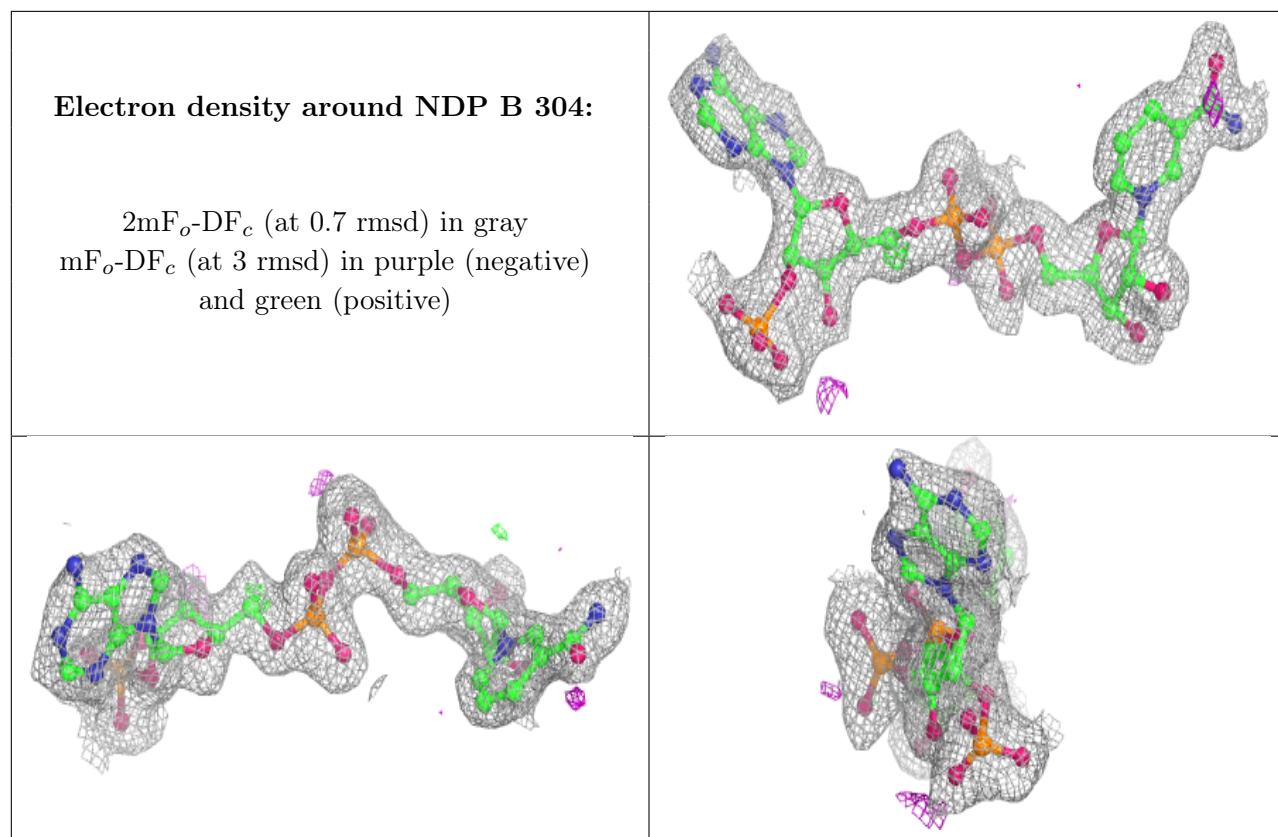
**Electron density around VFF A 301:**

$2mF_o-DF_c$  (at 0.7 rmsd) in gray  
 $mF_o-DF_c$  (at 3 rmsd) in purple (negative)  
and green (positive)

**Electron density around NDP A 303:**

$2mF_o-DF_c$  (at 0.7 rmsd) in gray  
 $mF_o-DF_c$  (at 3 rmsd) in purple (negative)  
and green (positive)





## 6.5 Other polymers [i](#)

There are no such residues in this entry.