



Full wwPDB X-ray Structure Validation Report ⓘ

Mar 18, 2024 – 04:24 pm GMT

PDB ID : 8CQP
Title : Crystal structure of an 8-repeat consensus TPR superhelix with Calcium (low concentration)
Authors : Liutkus, M.; Rojas, A.L.; Cortajarena, A.L.
Deposited on : 2023-03-07
Resolution : 1.70 Å(reported)

This is a Full wwPDB X-ray Structure Validation Report for a publicly released PDB entry.

We welcome your comments at validation@mail.wwpdb.org

A user guide is available at

<https://www.wwpdb.org/validation/2017/XrayValidationReportHelp>

with specific help available everywhere you see the ⓘ symbol.

The types of validation reports are described at

<http://www.wwpdb.org/validation/2017/FAQs#types>.

The following versions of software and data (see [references ⓘ](#)) were used in the production of this report:

MolProbity : 4.02b-467
Mogul : 1.8.4, CSD as541be (2020)
Xtriage (Phenix) : 1.13
EDS : 2.36
buster-report : 1.1.7 (2018)
Percentile statistics : 20191225.v01 (using entries in the PDB archive December 25th 2019)
Refmac : 5.8.0158
CCP4 : 7.0.044 (Gargrove)
Ideal geometry (proteins) : Engh & Huber (2001)
Ideal geometry (DNA, RNA) : Parkinson et al. (1996)
Validation Pipeline (wwPDB-VP) : 2.36

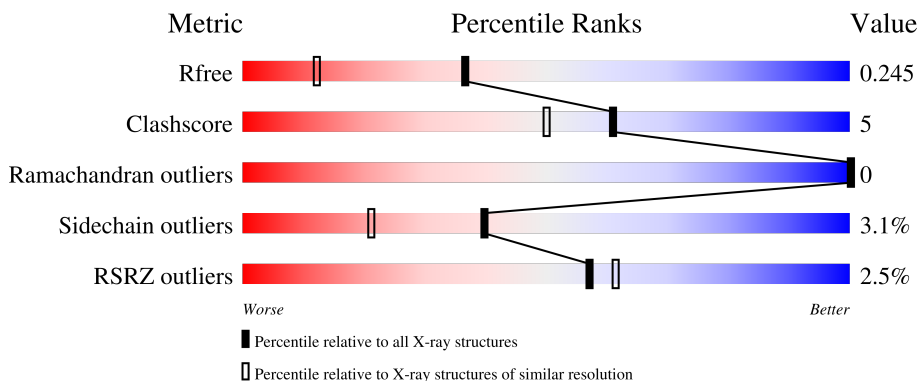
1 Overall quality at a glance

The following experimental techniques were used to determine the structure:

X-RAY DIFFRACTION

The reported resolution of this entry is 1.70 Å.

Percentile scores (ranging between 0-100) for global validation metrics of the entry are shown in the following graphic. The table shows the number of entries on which the scores are based.



Metric	Whole archive (#Entries)	Similar resolution (#Entries, resolution range(Å))
R_{free}	130704	4298 (1.70-1.70)
Clashscore	141614	4695 (1.70-1.70)
Ramachandran outliers	138981	4610 (1.70-1.70)
Sidechain outliers	138945	4610 (1.70-1.70)
RSRZ outliers	127900	4222 (1.70-1.70)

The table below summarises the geometric issues observed across the polymeric chains and their fit to the electron density. The red, orange, yellow and green segments of the lower bar indicate the fraction of residues that contain outliers for ≥ 3 , 2, 1 and 0 types of geometric quality criteria respectively. A grey segment represents the fraction of residues that are not modelled. The numeric value for each fraction is indicated below the corresponding segment, with a dot representing fractions $\leq 5\%$. The upper red bar (where present) indicates the fraction of residues that have poor fit to the electron density. The numeric value is given above the bar.

Mol	Chain	Length	Quality of chain
1	A	292	
1	B	292	
1	C	292	

2 Entry composition [i](#)

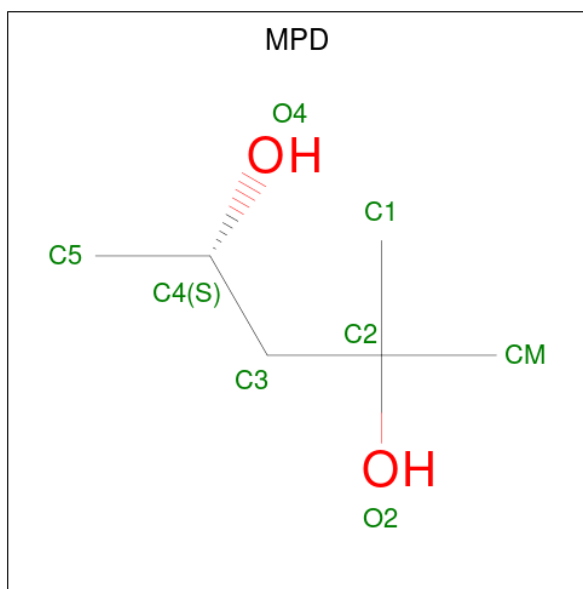
There are 6 unique types of molecules in this entry. The entry contains 3599 atoms, of which 0 are hydrogens and 0 are deuteriums.

In the tables below, the ZeroOcc column contains the number of atoms modelled with zero occupancy, the AltConf column contains the number of residues with at least one atom in alternate conformation and the Trace column contains the number of residues modelled with at most 2 atoms.

- Molecule 1 is a protein called Monomer.

Mol	Chain	Residues	Atoms			ZeroOcc	AltConf	Trace	
			Total	C	N				O
1	A	136	1148	736	176	236	0	0	0
1	B	136	1153	739	176	238	0	1	0
1	C	134	1137	731	171	235	0	1	0

- Molecule 2 is (4S)-2-METHYL-2,4-PENTANEDIOL (three-letter code: MPD) (formula: C₆H₁₄O₂).



Mol	Chain	Residues	Atoms			ZeroOcc	AltConf
			Total	C	O		
2	A	1	8	6	2	0	0
2	C	1	8	6	2	0	0

- Molecule 3 is ACETATE ION (three-letter code: ACT) (formula: C₂H₃O₂).



Mol	Chain	Residues	Atoms	ZeroOcc	AltConf
3	A	1	Total C O 4 2 2	0	0
3	A	1	Total C O 4 2 2	0	0
3	A	1	Total C O 4 2 2	0	0
3	A	1	Total C O 4 2 2	0	0
3	A	1	Total C O 4 2 2	0	0
3	A	1	Total C O 4 2 2	0	0
3	A	1	Total C O 4 2 2	0	0
3	B	1	Total C O 4 2 2	0	0
3	B	1	Total C O 4 2 2	0	0
3	B	1	Total C O 4 2 2	0	0
3	B	1	Total C O 4 2 2	0	0
3	C	1	Total C O 4 2 2	0	0

- Molecule 4 is CHLORIDE ION (three-letter code: CL) (formula: Cl).

Mol	Chain	Residues	Atoms	ZeroOcc	AltConf
4	A	4	Total Cl 4 4	0	0
4	C	1	Total Cl 1 1	0	0

- Molecule 5 is CALCIUM ION (three-letter code: CA) (formula: Ca) (labeled as "Ligand of Interest" by depositor).

Mol	Chain	Residues	Atoms	ZeroOcc	AltConf
5	C	2	Total Ca 2 2	0	0

- Molecule 6 is water.

Mol	Chain	Residues	Atoms	ZeroOcc	AltConf
6	A	49	Total O 49 49	0	0
6	B	9	Total O 9 9	0	0
6	C	32	Total O 32 32	0	0

GLN
GLY
ASP
TYR
ASP
GLU
ALA
ILE
GLU
TYR
TYR
GLN
LYS
ALA
LEU
GLU
LEU
ASP
PRO
ARG
SER
ALA
GLU
ALA
TRP
TYR
ASN
LEU
GLY
ASN
ALA
TYR
TYR
LYS
GLN
GLY
ASP
TYR
ASP
GLU
ALA
ILE
GLU
TYR
TYR
GLN
LYS
ALA
LEU
GLU
LEU
ASP
PRO
ARG
SER
ALA
GLU
ALA
LYS
GLY

ASN
LEU
GLY
ASN
ALA
LYS
GLN
LYS
GLN
GLY

4 Data and refinement statistics

Property	Value	Source
Space group	P 21 21 21	Depositor
Cell constants a, b, c, α , β , γ	66.45Å 70.25Å 102.62Å 90.00° 90.00° 90.00°	Depositor
Resolution (Å)	57.97 – 1.70 57.97 – 1.70	Depositor EDS
% Data completeness (in resolution range)	99.6 (57.97-1.70) 99.6 (57.97-1.70)	Depositor EDS
R_{merge}	(Not available)	Depositor
R_{sym}	(Not available)	Depositor
$\langle I/\sigma(I) \rangle$ ¹	1.40 (at 1.70Å)	Xtrriage
Refinement program	REFMAC 5	Depositor
R, R_{free}	0.201 , 0.239 0.209 , 0.245	Depositor DCC
R_{free} test set	2666 reflections (5.00%)	wwPDB-VP
Wilson B-factor (Å ²)	33.6	Xtrriage
Anisotropy	0.018	Xtrriage
Bulk solvent k_{sol} (e/Å ³), B_{sol} (Å ²)	0.35 , 46.0	EDS
L-test for twinning ²	$\langle L \rangle = 0.48$, $\langle L^2 \rangle = 0.31$	Xtrriage
Estimated twinning fraction	No twinning to report.	Xtrriage
F_o, F_c correlation	0.96	EDS
Total number of atoms	3599	wwPDB-VP
Average B, all atoms (Å ²)	43.0	wwPDB-VP

Xtrriage's analysis on translational NCS is as follows: *The largest off-origin peak in the Patterson function is 12.15% of the height of the origin peak. No significant pseudotranslation is detected.*

¹Intensities estimated from amplitudes.

²Theoretical values of $\langle |L| \rangle$, $\langle L^2 \rangle$ for acentric reflections are 0.5, 0.333 respectively for untwinned datasets, and 0.375, 0.2 for perfectly twinned datasets.

5 Model quality i

5.1 Standard geometry i

Bond lengths and bond angles in the following residue types are not validated in this section: CA, ACT, MPD, CL

The Z score for a bond length (or angle) is the number of standard deviations the observed value is removed from the expected value. A bond length (or angle) with $|Z| > 5$ is considered an outlier worth inspection. RMSZ is the root-mean-square of all Z scores of the bond lengths (or angles).

Mol	Chain	Bond lengths		Bond angles	
		RMSZ	# $ Z > 5$	RMSZ	# $ Z > 5$
1	A	0.84	2/1183 (0.2%)	0.93	1/1609 (0.1%)
1	B	0.70	0/1191	0.79	0/1620
1	C	0.76	0/1175	0.84	0/1599
All	All	0.77	2/3549 (0.1%)	0.85	1/4828 (0.0%)

All (2) bond length outliers are listed below:

Mol	Chain	Res	Type	Atoms	Z	Observed(Å)	Ideal(Å)
1	A	124	GLU	CD-OE1	5.51	1.31	1.25
1	A	118	ASP	CG-OD1	5.28	1.37	1.25

All (1) bond angle outliers are listed below:

Mol	Chain	Res	Type	Atoms	Z	Observed(°)	Ideal(°)
1	A	92	TYR	CB-CG-CD1	5.91	124.54	121.00

There are no chirality outliers.

There are no planarity outliers.

5.2 Too-close contacts i

In the following table, the Non-H and H(model) columns list the number of non-hydrogen atoms and hydrogen atoms in the chain respectively. The H(added) column lists the number of hydrogen atoms added and optimized by MolProbity. The Clashes column lists the number of clashes within the asymmetric unit, whereas Symm-Clashes lists symmetry-related clashes.

Mol	Chain	Non-H	H(model)	H(added)	Clashes	Symm-Clashes
1	A	1148	0	1018	5	1
1	B	1153	0	1022	12	0

Continued on next page...

Continued from previous page...

Mol	Chain	Non-H	H(model)	H(added)	Clashes	Symm-Clashes
1	C	1137	0	1005	16	0
2	A	8	0	14	3	0
2	C	8	0	14	3	0
3	A	28	0	21	0	0
3	B	16	0	12	0	0
3	C	4	0	3	0	0
4	A	4	0	0	0	0
4	C	1	0	0	0	0
5	C	2	0	0	0	0
6	A	49	0	0	0	0
6	B	9	0	0	0	0
6	C	32	0	0	2	0
All	All	3599	0	3109	30	1

The all-atom clashscore is defined as the number of clashes found per 1000 atoms (including hydrogen atoms). The all-atom clashscore for this structure is 5.

All (30) close contacts within the same asymmetric unit are listed below, sorted by their clash magnitude.

Atom-1	Atom-2	Interatomic distance (Å)	Clash overlap (Å)
1:C:102:SER:OG	2:C:301:MPD:HM3	1.69	0.93
1:B:136:SER:O	1:C:1:ALA:CA	2.16	0.92
1:B:136:SER:O	1:C:1:ALA:HA	1.70	0.91
1:B:136:SER:O	1:C:1:ALA:N	2.05	0.89
2:C:301:MPD:HM1	2:C:301:MPD:O4	1.92	0.70
1:B:130:LEU:HD12	1:C:7:LEU:HD23	1.77	0.66
2:A:301:MPD:HM1	2:A:301:MPD:H52	1.79	0.63
1:A:67:ARG:HD2	1:B:107:TYR:OH	1.99	0.62
1:B:136:SER:C	1:C:1:ALA:HA	2.20	0.62
1:B:126:TYR:CD1	1:C:6:ASN:ND2	2.67	0.61
2:A:301:MPD:H51	6:C:406:HOH:O	2.01	0.59
1:C:6:ASN:OD1	1:C:7:LEU:N	2.35	0.59
1:C:3:ALA:O	1:C:6:ASN:OD1	2.22	0.57
1:A:135:ARG:HD2	1:B:16:ASP:OD2	2.06	0.56
2:A:301:MPD:H52	2:A:301:MPD:CM	2.36	0.55
1:B:65:ASP:OD1	1:B:67:ARG:HB2	2.07	0.53
1:B:118:ASP:O	1:B:121:GLU:HB2	2.10	0.51
1:C:118:ASP:HB3	1:C:121:GLU:OE1	2.10	0.51
1:C:133:ASP:OD1	1:C:134:PRO:HD2	2.14	0.48
1:B:62:LEU:HD22	1:B:72:TRP:CE2	2.52	0.44
2:C:301:MPD:O4	2:C:301:MPD:CM	2.62	0.44

Continued on next page...

Continued from previous page...

Atom-1	Atom-2	Interatomic distance (Å)	Clash overlap (Å)
1:A:28:LEU:HD22	1:A:38:TRP:CE2	2.53	0.44
1:C:50:ASP:HB3	6:C:430:HOH:O	2.18	0.43
1:A:62:LEU:HD21	1:A:71:ALA:HB3	2.00	0.43
1:B:120:ASP:N	1:B:120:ASP:OD1	2.49	0.43
1:C:84:ASP:HB3	1:C:87[A]:GLU:CD	2.40	0.42
1:C:92:TYR:CZ	1:C:108:ASN:HB3	2.54	0.42
1:A:96:LEU:HD22	1:A:106:TRP:CE2	2.55	0.42
1:C:1:ALA:O	1:C:4:TRP:N	2.54	0.41
1:C:4:TRP:CZ2	1:C:26:LYS:HG2	2.57	0.40

All (1) symmetry-related close contacts are listed below. The label for Atom-2 includes the symmetry operator and encoded unit-cell translations to be applied.

Atom-1	Atom-2	Interatomic distance (Å)	Clash overlap (Å)
1:A:1:ALA:N	1:A:136:SER:C[3_545]	1.79	0.41

5.3 Torsion angles [i](#)

5.3.1 Protein backbone [i](#)

In the following table, the Percentiles column shows the percent Ramachandran outliers of the chain as a percentile score with respect to all X-ray entries followed by that with respect to entries of similar resolution.

The Analysed column shows the number of residues for which the backbone conformation was analysed, and the total number of residues.

Mol	Chain	Analysed	Favoured	Allowed	Outliers	Percentiles	
1	A	134/292 (46%)	134 (100%)	0	0	100	100
1	B	135/292 (46%)	131 (97%)	4 (3%)	0	100	100
1	C	133/292 (46%)	133 (100%)	0	0	100	100
All	All	402/876 (46%)	398 (99%)	4 (1%)	0	100	100

There are no Ramachandran outliers to report.

5.3.2 Protein sidechains [i](#)

In the following table, the Percentiles column shows the percent sidechain outliers of the chain as a percentile score with respect to all X-ray entries followed by that with respect to entries of similar

resolution.

The Analysed column shows the number of residues for which the sidechain conformation was analysed, and the total number of residues.

Mol	Chain	Analysed	Rotameric	Outliers	Percentiles	
1	A	108/227 (48%)	107 (99%)	1 (1%)	78	70
1	B	109/227 (48%)	103 (94%)	6 (6%)	21	7
1	C	107/227 (47%)	104 (97%)	3 (3%)	43	25
All	All	324/681 (48%)	314 (97%)	10 (3%)	40	21

All (10) residues with a non-rotameric sidechain are listed below:

Mol	Chain	Res	Type
1	A	121	GLU
1	B	53	GLU
1	B	94	LYS
1	B	101	ARG
1	B	116	GLN
1	B	120	ASP
1	B	135	ARG
1	C	7	LEU
1	C	28	LEU
1	C	41	LEU

Sometimes sidechains can be flipped to improve hydrogen bonding and reduce clashes. All (5) such sidechains are listed below:

Mol	Chain	Res	Type
1	A	82	GLN
1	A	116	GLN
1	B	82	GLN
1	C	74	ASN
1	C	116	GLN

5.3.3 RNA [i](#)

There are no RNA molecules in this entry.

5.4 Non-standard residues in protein, DNA, RNA chains [i](#)

There are no non-standard protein/DNA/RNA residues in this entry.

5.5 Carbohydrates [i](#)

There are no monosaccharides in this entry.

5.6 Ligand geometry [i](#)

Of 21 ligands modelled in this entry, 7 are monoatomic - leaving 14 for Mogul analysis.

In the following table, the Counts columns list the number of bonds (or angles) for which Mogul statistics could be retrieved, the number of bonds (or angles) that are observed in the model and the number of bonds (or angles) that are defined in the Chemical Component Dictionary. The Link column lists molecule types, if any, to which the group is linked. The Z score for a bond length (or angle) is the number of standard deviations the observed value is removed from the expected value. A bond length (or angle) with $|Z| > 2$ is considered an outlier worth inspection. RMSZ is the root-mean-square of all Z scores of the bond lengths (or angles).

Mol	Type	Chain	Res	Link	Bond lengths			Bond angles		
					Counts	RMSZ	# Z > 2	Counts	RMSZ	# Z > 2
3	ACT	B	301	-	3,3,3	1.00	0	3,3,3	0.82	0
3	ACT	B	303	-	3,3,3	1.33	1 (33%)	3,3,3	0.52	0
2	MPD	A	301	-	7,7,7	0.59	0	9,10,10	0.68	0
3	ACT	A	306	-	3,3,3	0.78	0	3,3,3	0.93	0
3	ACT	A	308	-	3,3,3	0.96	0	3,3,3	1.03	0
3	ACT	A	303	-	3,3,3	1.17	0	3,3,3	0.51	0
3	ACT	A	305	-	3,3,3	1.00	0	3,3,3	0.88	0
3	ACT	B	302	-	3,3,3	0.98	0	3,3,3	0.81	0
3	ACT	A	307	-	3,3,3	0.88	0	3,3,3	0.72	0
3	ACT	B	304	-	3,3,3	1.09	0	3,3,3	0.70	0
3	ACT	A	304	-	3,3,3	1.04	0	3,3,3	0.56	0
3	ACT	A	302	-	3,3,3	0.87	0	3,3,3	0.95	0
2	MPD	C	301	-	7,7,7	0.25	0	9,10,10	0.49	0
3	ACT	C	302	-	3,3,3	0.98	0	3,3,3	0.76	0

In the following table, the Chirals column lists the number of chiral outliers, the number of chiral centers analysed, the number of these observed in the model and the number defined in the Chemical Component Dictionary. Similar counts are reported in the Torsion and Rings columns. '-' means no outliers of that kind were identified.

Mol	Type	Chain	Res	Link	Chirals	Torsions	Rings
2	MPD	A	301	-	-	1/5/5/5	-
2	MPD	C	301	-	-	2/5/5/5	-

All (1) bond length outliers are listed below:

Mol	Chain	Res	Type	Atoms	Z	Observed(Å)	Ideal(Å)
3	B	303	ACT	OXT-C	-2.05	1.20	1.30

There are no bond angle outliers.

There are no chirality outliers.

All (3) torsion outliers are listed below:

Mol	Chain	Res	Type	Atoms
2	A	301	MPD	C2-C3-C4-O4
2	C	301	MPD	C2-C3-C4-O4
2	C	301	MPD	C2-C3-C4-C5

There are no ring outliers.

2 monomers are involved in 6 short contacts:

Mol	Chain	Res	Type	Clashes	Symm-Clashes
2	A	301	MPD	3	0
2	C	301	MPD	3	0

5.7 Other polymers [i](#)

There are no such residues in this entry.

5.8 Polymer linkage issues [i](#)

There are no chain breaks in this entry.

6 Fit of model and data [i](#)

6.1 Protein, DNA and RNA chains [i](#)

In the following table, the column labelled ‘#RSRZ > 2’ contains the number (and percentage) of RSRZ outliers, followed by percent RSRZ outliers for the chain as percentile scores relative to all X-ray entries and entries of similar resolution. The OWAB column contains the minimum, median, 95th percentile and maximum values of the occupancy-weighted average B-factor per residue. The column labelled ‘Q < 0.9’ lists the number of (and percentage) of residues with an average occupancy less than 0.9.

Mol	Chain	Analysed	<RSRZ>	#RSRZ>2	OWAB(Å ²)	Q<0.9
1	A	136/292 (46%)	-0.02	0 100 100	23, 31, 50, 62	0
1	B	136/292 (46%)	0.51	8 (5%) 22 24	34, 53, 77, 92	0
1	C	134/292 (45%)	0.15	2 (1%) 73 77	25, 38, 63, 105	0
All	All	406/876 (46%)	0.21	10 (2%) 57 61	23, 40, 72, 105	0

All (10) RSRZ outliers are listed below:

Mol	Chain	Res	Type	RSRZ
1	B	72	TRP	3.6
1	B	105	ALA	3.0
1	C	6	ASN	3.0
1	B	98	LEU	2.8
1	B	135	ARG	2.3
1	B	94	LYS	2.3
1	B	125	TYR	2.2
1	C	133	ASP	2.1
1	B	71	ALA	2.1
1	B	67	ARG	2.0

6.2 Non-standard residues in protein, DNA, RNA chains [i](#)

There are no non-standard protein/DNA/RNA residues in this entry.

6.3 Carbohydrates [i](#)

There are no monosaccharides in this entry.

6.4 Ligands

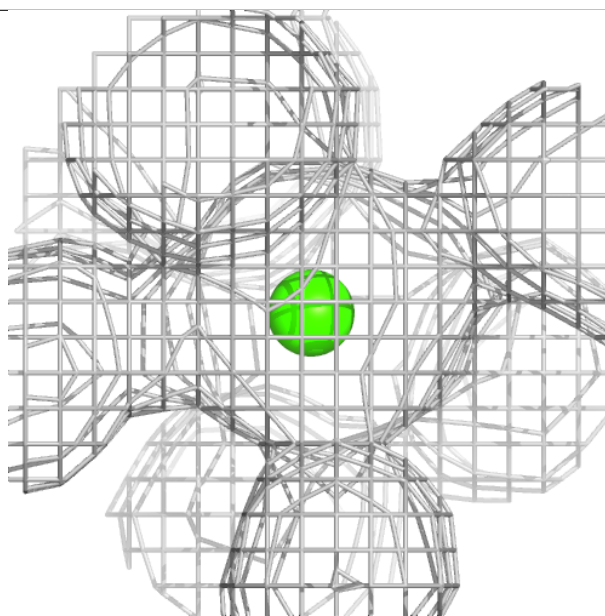
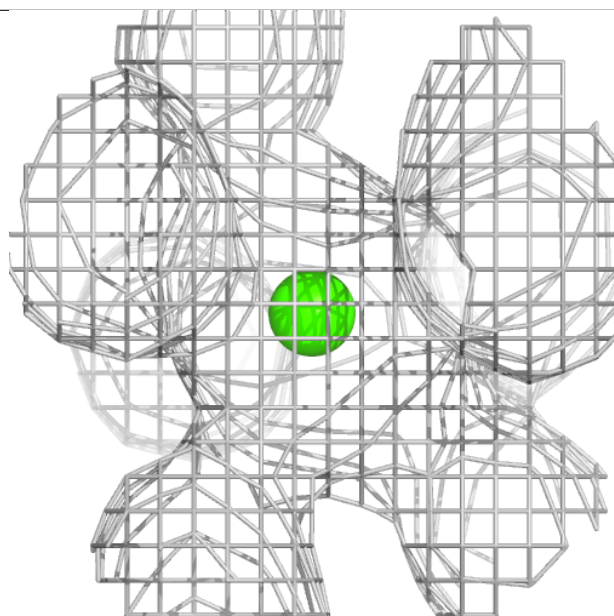
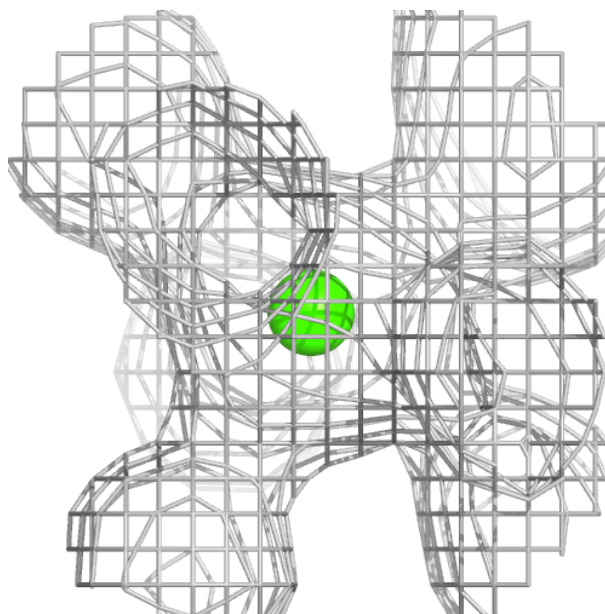
In the following table, the Atoms column lists the number of modelled atoms in the group and the number defined in the chemical component dictionary. The B-factors column lists the minimum, median, 95th percentile and maximum values of B factors of atoms in the group. The column labelled 'Q< 0.9' lists the number of atoms with occupancy less than 0.9.

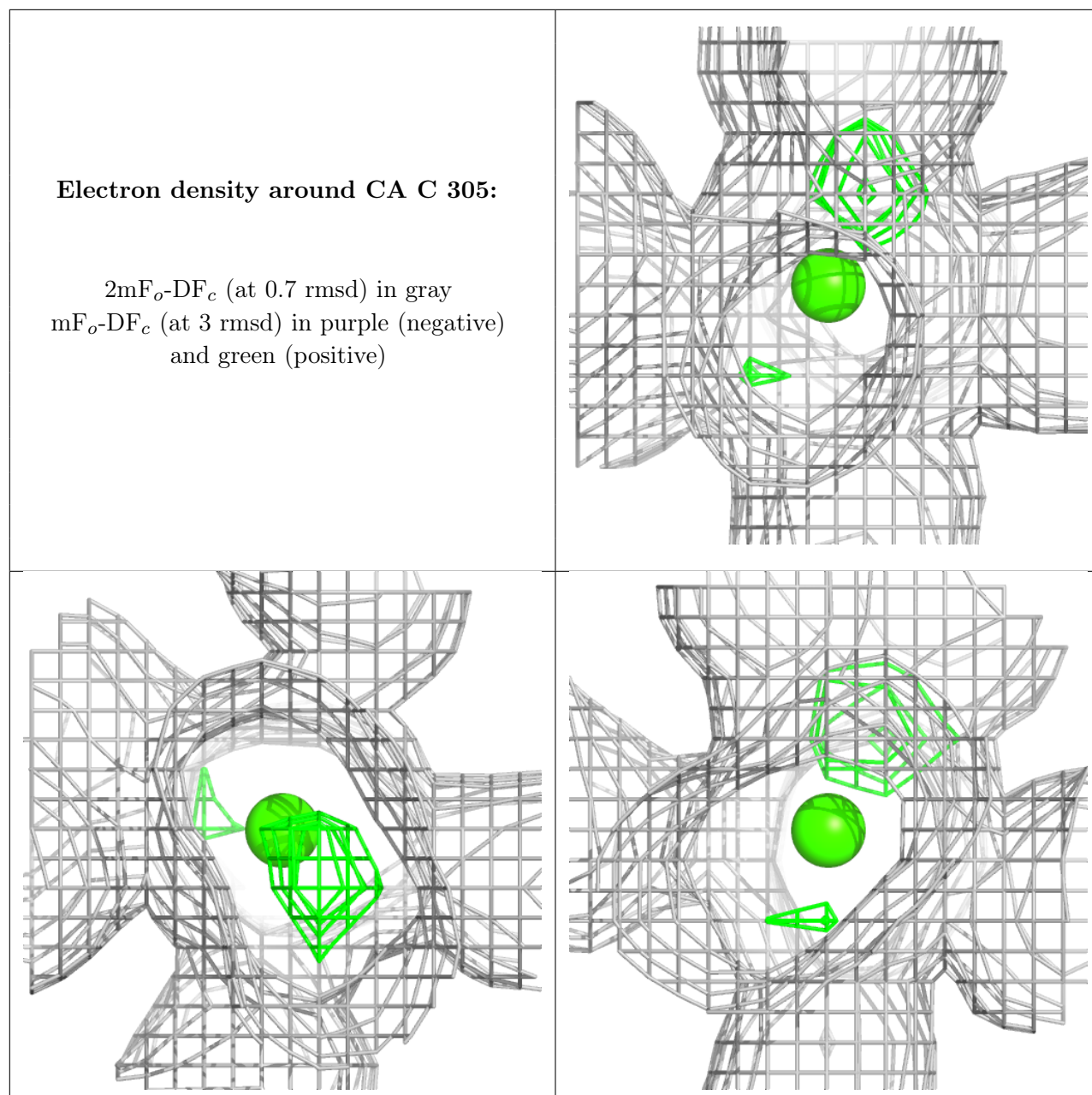
Mol	Type	Chain	Res	Atoms	RSCC	RSR	B-factors(Å ²)	Q<0.9
4	CL	A	310	1/1	0.65	0.14	90,90,90,90	0
3	ACT	B	304	4/4	0.83	0.09	54,57,60,61	0
4	CL	A	312	1/1	0.84	0.09	76,76,76,76	0
4	CL	C	303	1/1	0.84	0.18	80,80,80,80	0
3	ACT	A	308	4/4	0.87	0.14	50,63,66,71	0
3	ACT	B	302	4/4	0.88	0.12	54,58,64,69	0
3	ACT	B	301	4/4	0.89	0.12	63,63,64,70	0
3	ACT	A	307	4/4	0.89	0.15	57,62,64,76	0
3	ACT	A	306	4/4	0.90	0.11	48,52,63,65	0
2	MPD	A	301	8/8	0.90	0.11	29,30,33,39	0
3	ACT	A	305	4/4	0.90	0.14	45,53,54,56	0
3	ACT	A	304	4/4	0.91	0.14	58,59,63,74	0
3	ACT	B	303	4/4	0.92	0.13	53,58,59,62	0
4	CL	A	311	1/1	0.92	0.15	64,64,64,64	0
3	ACT	C	302	4/4	0.92	0.14	45,52,57,64	0
4	CL	A	309	1/1	0.92	0.12	86,86,86,86	0
3	ACT	A	303	4/4	0.95	0.12	48,49,49,56	0
2	MPD	C	301	8/8	0.96	0.12	30,39,51,54	0
3	ACT	A	302	4/4	0.97	0.11	45,53,53,58	0
5	CA	C	304	1/1	0.99	0.06	27,27,27,27	1
5	CA	C	305	1/1	0.99	0.13	27,27,27,27	0

The following is a graphical depiction of the model fit to experimental electron density of all instances of the Ligand of Interest. In addition, ligands with molecular weight > 250 and outliers as shown on the geometry validation Tables will also be included. Each fit is shown from different orientation to approximate a three-dimensional view.

Electron density around CA C 304:

$2mF_o-DF_c$ (at 0.7 rmsd) in gray
 mF_o-DF_c (at 3 rmsd) in purple (negative)
and green (positive)





6.5 Other polymers [i](#)

There are no such residues in this entry.