



Full wwPDB X-ray Structure Validation Report ⓘ

Jun 11, 2024 – 06:18 PM EDT

PDB ID : 2CSC
Title : Structure of ternary complexes of CITRATE SYNTHASE WITH D-AND L-MALATE: mechanistic implications
Authors : Karpusas, M.; Holland, D.; Remington, S.J.
Deposited on : 1990-05-07
Resolution : 1.70 Å(reported)

This is a Full wwPDB X-ray Structure Validation Report for a publicly released PDB entry.

We welcome your comments at validation@mail.wwpdb.org

A user guide is available at

<https://www.wwpdb.org/validation/2017/XrayValidationReportHelp>

with specific help available everywhere you see the ⓘ symbol.

The types of validation reports are described at

<http://www.wwpdb.org/validation/2017/FAQs#types>.

The following versions of software and data (see [references ⓘ](#)) were used in the production of this report:

MolProbity : 4.02b-467
Mogul : 2022.3.0, CSD as543be (2022)
Xtrriage (Phenix) : **NOT EXECUTED**
EDS : **NOT EXECUTED**
buster-report : 1.1.7 (2018)
Percentile statistics : 20191225.v01 (using entries in the PDB archive December 25th 2019)
Ideal geometry (proteins) : Engh & Huber (2001)
Ideal geometry (DNA, RNA) : Parkinson et al. (1996)
Validation Pipeline (wwPDB-VP) : 2.36.2

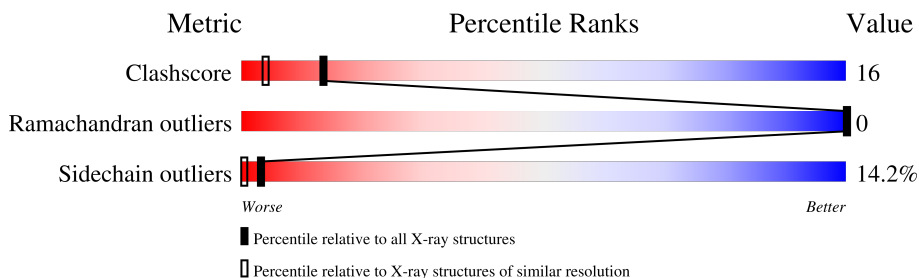
1 Overall quality at a glance

The following experimental techniques were used to determine the structure:

X-RAY DIFFRACTION

The reported resolution of this entry is 1.70 Å.

Percentile scores (ranging between 0-100) for global validation metrics of the entry are shown in the following graphic. The table shows the number of entries on which the scores are based.



Metric	Whole archive (#Entries)	Similar resolution (#Entries, resolution range(Å))
Clashscore	141614	4695 (1.70-1.70)
Ramachandran outliers	138981	4610 (1.70-1.70)
Sidechain outliers	138945	4610 (1.70-1.70)

The table below summarises the geometric issues observed across the polymeric chains and their fit to the electron density. The red, orange, yellow and green segments of the lower bar indicate the fraction of residues that contain outliers for ≥ 3 , 2, 1 and 0 types of geometric quality criteria respectively. A grey segment represents the fraction of residues that are not modelled. The numeric value for each fraction is indicated below the corresponding segment, with a dot representing fractions $\leq 5\%$

Note EDS was not executed.

Mol	Chain	Length	Quality of chain
1	A	433	58% 32% 8% ..

2 Entry composition [i](#)

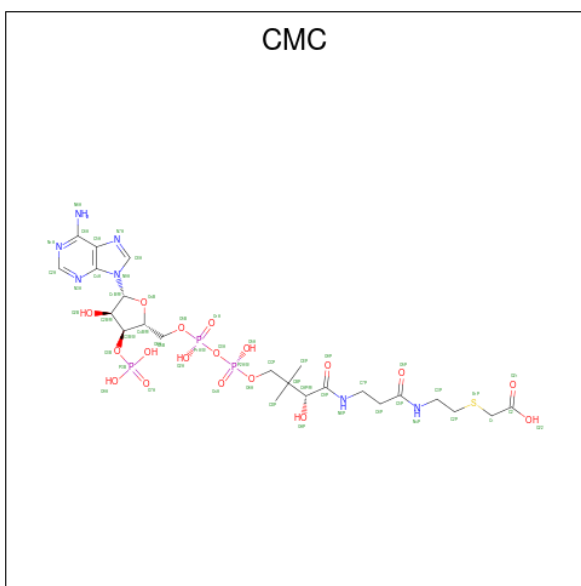
There are 4 unique types of molecules in this entry. The entry contains 3468 atoms, of which 0 are hydrogens and 0 are deuteriums.

In the tables below, the ZeroOcc column contains the number of atoms modelled with zero occupancy, the AltConf column contains the number of residues with at least one atom in alternate conformation and the Trace column contains the number of residues modelled with at most 2 atoms.

- Molecule 1 is a protein called CITRATE SYNTHASE.

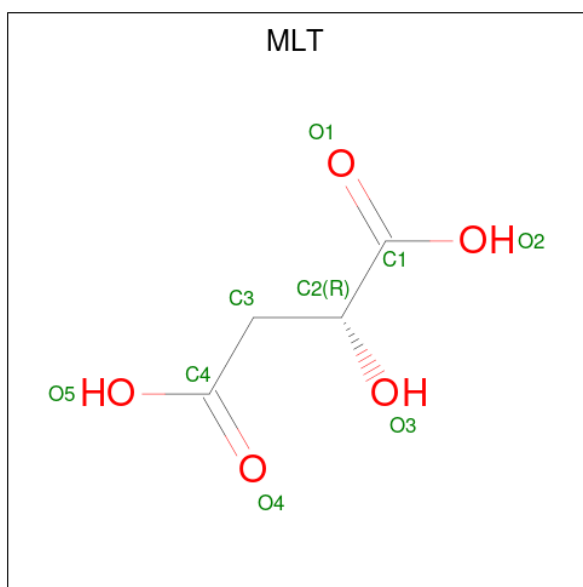
Mol	Chain	Residues	Atoms					ZeroOcc	AltConf	Trace
			Total	C	N	O	S			
1	A	429	3306	2115	571	603	17	0	0	0

- Molecule 2 is CARBOXYMETHYL COENZYME *A (three-letter code: CMC) (formula: $C_{23}H_{38}N_7O_{18}P_3S$).



Mol	Chain	Residues	Atoms						ZeroOcc	AltConf
			Total	C	N	O	P	S		
2	A	1	52	23	7	18	3	1	0	0

- Molecule 3 is D-MALATE (three-letter code: MLT) (formula: $C_4H_6O_5$).



Mol	Chain	Residues	Atoms	ZeroOcc	AltConf
3	A	1	Total C O 9 4 5	0	0

- Molecule 4 is water.

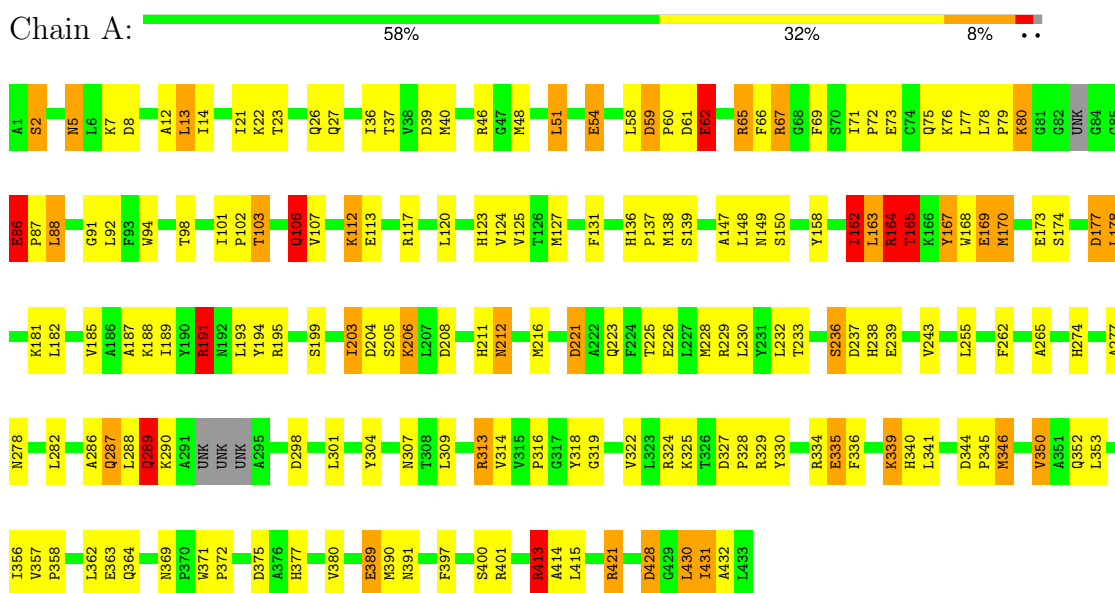
Mol	Chain	Residues	Atoms	ZeroOcc	AltConf
4	A	101	Total O 101 101	0	0

3 Residue-property plots [i](#)

These plots are drawn for all protein, RNA, DNA and oligosaccharide chains in the entry. The first graphic for a chain summarises the proportions of the various outlier classes displayed in the second graphic. The second graphic shows the sequence view annotated by issues in geometry. Residues are color-coded according to the number of geometric quality criteria for which they contain at least one outlier: green = 0, yellow = 1, orange = 2 and red = 3 or more. Stretches of 2 or more consecutive residues without any outlier are shown as a green connector. Residues present in the sample, but not in the model, are shown in grey.

Note EDS was not executed.

- Molecule 1: CITRATE SYNTHASE



4 Data and refinement statistics

Xtrriage (Phenix) and EDS were not executed - this section is therefore incomplete.

Property	Value	Source
Space group	C 1 2 1	Depositor
Cell constants a, b, c, α , β , γ	104.00Å 78.10Å 58.30Å 90.00° 78.90° 90.00°	Depositor
Resolution (Å)	6.00 – 1.70	Depositor
% Data completeness (in resolution range)	(Not available) (6.00-1.70)	Depositor
R_{merge}	(Not available)	Depositor
R_{sym}	(Not available)	Depositor
Refinement program	TNT	Depositor
R, R_{free}	0.189 , (Not available)	Depositor
Estimated twinning fraction	No twinning to report.	Xtrriage
Total number of atoms	3468	wwPDB-VP
Average B, all atoms (Å ²)	19.0	wwPDB-VP

5 Model quality [i](#)

5.1 Standard geometry [i](#)

Bond lengths and bond angles in the following residue types are not validated in this section: MLT, CMC

The Z score for a bond length (or angle) is the number of standard deviations the observed value is removed from the expected value. A bond length (or angle) with $|Z| > 5$ is considered an outlier worth inspection. RMSZ is the root-mean-square of all Z scores of the bond lengths (or angles).

Mol	Chain	Bond lengths		Bond angles	
		RMSZ	# Z >5	RMSZ	# Z >5
1	A	0.99	14/3386 (0.4%)	1.65	77/4598 (1.7%)

Chiral center outliers are detected by calculating the chiral volume of a chiral center and verifying if the center is modelled as a planar moiety or with the opposite hand. A planarity outlier is detected by checking planarity of atoms in a peptide group, atoms in a mainchain group or atoms of a sidechain that are expected to be planar.

Mol	Chain	#Chirality outliers	#Planarity outliers
1	A	2	3

All (14) bond length outliers are listed below:

Mol	Chain	Res	Type	Atoms	Z	Observed(Å)	Ideal(Å)
1	A	54	GLU	CD-OE2	7.06	1.33	1.25
1	A	363	GLU	CD-OE2	6.60	1.32	1.25
1	A	239	GLU	CD-OE2	6.19	1.32	1.25
1	A	226	GLU	CD-OE2	5.99	1.32	1.25
1	A	73	GLU	CD-OE2	5.61	1.31	1.25
1	A	62	GLU	CD-OE2	5.61	1.31	1.25
1	A	113	GLU	CD-OE2	5.47	1.31	1.25
1	A	103	THR	CB-OG1	5.36	1.53	1.43
1	A	98	THR	CB-OG1	5.29	1.53	1.43
1	A	169	GLU	CD-OE2	5.28	1.31	1.25
1	A	335	GLU	CD-OE2	5.18	1.31	1.25
1	A	173	GLU	CD-OE2	5.06	1.31	1.25
1	A	86	GLU	CD-OE2	5.06	1.31	1.25
1	A	54	GLU	CD-OE1	-5.01	1.20	1.25

All (77) bond angle outliers are listed below:

Mol	Chain	Res	Type	Atoms	Z	Observed(°)	Ideal(°)
1	A	191	ARG	NE-CZ-NH2	-15.73	112.44	120.30
1	A	191	ARG	NE-CZ-NH1	13.67	127.14	120.30
1	A	67	ARG	NE-CZ-NH1	13.29	126.94	120.30
1	A	313	ARG	NE-CZ-NH1	13.23	126.91	120.30
1	A	65	ARG	NE-CZ-NH1	12.07	126.34	120.30
1	A	313	ARG	NE-CZ-NH2	-11.37	114.61	120.30
1	A	67	ARG	NE-CZ-NH2	-10.46	115.07	120.30
1	A	191	ARG	CD-NE-CZ	10.01	137.62	123.60
1	A	65	ARG	NE-CZ-NH2	-8.88	115.86	120.30
1	A	228	MET	CG-SD-CE	-8.76	86.19	100.20
1	A	59	ASP	CB-CG-OD2	-8.63	110.53	118.30
1	A	51	LEU	CB-CA-C	-7.96	95.07	110.20
1	A	431	ILE	CA-CB-CG1	7.93	126.06	111.00
1	A	401	ARG	NE-CZ-NH1	7.69	124.14	120.30
1	A	191	ARG	CG-CD-NE	-7.42	96.21	111.80
1	A	286	ALA	CB-CA-C	7.42	121.23	110.10
1	A	174	SER	CB-CA-C	7.29	123.94	110.10
1	A	117	ARG	NE-CZ-NH1	7.23	123.92	120.30
1	A	278	ASN	CA-CB-CG	-7.20	97.55	113.40
1	A	313	ARG	CD-NE-CZ	7.16	133.62	123.60
1	A	106	GLN	CB-CA-C	-7.11	96.17	110.40
1	A	237	ASP	CB-CG-OD2	-7.07	111.94	118.30
1	A	67	ARG	CA-C-N	-7.06	102.08	116.20
1	A	431	ILE	CG1-CB-CG2	-7.03	95.92	111.40
1	A	165	THR	CA-CB-CG2	6.99	122.19	112.40
1	A	221	ASP	CB-CG-OD2	-6.97	112.03	118.30
1	A	431	ILE	N-CA-CB	6.87	126.61	110.80
1	A	67	ARG	CB-CA-C	-6.78	96.84	110.40
1	A	88	LEU	CB-CG-CD1	6.70	122.40	111.00
1	A	39	ASP	CB-CG-OD2	-6.66	112.30	118.30
1	A	390	MET	CG-SD-CE	-6.62	89.60	100.20
1	A	106	GLN	N-CA-CB	6.57	122.43	110.60
1	A	195	ARG	NE-CZ-NH1	6.55	123.58	120.30
1	A	106	GLN	CA-CB-CG	6.46	127.61	113.40
1	A	27	GLN	N-CA-CB	-6.44	99.01	110.60
1	A	289	GLN	CB-CG-CD	-6.39	94.98	111.60
1	A	54	GLU	CB-CG-CD	-6.19	97.49	114.20
1	A	13	LEU	CA-CB-CG	6.17	129.49	115.30
1	A	112	LYS	N-CA-CB	6.08	121.55	110.60
1	A	54	GLU	CG-CD-OE2	-5.97	106.37	118.30
1	A	289	GLN	CB-CA-C	-5.95	98.50	110.40
1	A	221	ASP	CB-CG-OD1	5.94	123.65	118.30
1	A	177	ASP	CB-CG-OD2	-5.94	112.96	118.30

Continued on next page...

Continued from previous page...

Mol	Chain	Res	Type	Atoms	Z	Observed(°)	Ideal(°)
1	A	22	LYS	N-CA-CB	5.81	121.06	110.60
1	A	162	ILE	CB-CA-C	-5.79	100.01	111.60
1	A	66	PHE	CA-C-N	5.72	129.79	117.20
1	A	339	LYS	N-CA-CB	5.72	120.89	110.60
1	A	170	MET	CG-SD-CE	-5.71	91.07	100.20
1	A	66	PHE	C-N-CA	-5.70	107.44	121.70
1	A	67	ARG	CD-NE-CZ	5.67	131.54	123.60
1	A	428	ASP	CB-CG-OD2	-5.66	113.20	118.30
1	A	350	VAL	CA-CB-CG1	5.64	119.36	110.90
1	A	298	ASP	CB-CG-OD2	-5.58	113.28	118.30
1	A	421	ARG	NE-CZ-NH2	-5.56	117.52	120.30
1	A	413	ARG	CB-CG-CD	5.54	125.99	111.60
1	A	307	ASN	N-CA-CB	-5.47	100.75	110.60
1	A	165	THR	OG1-CB-CG2	5.45	122.53	110.00
1	A	278	ASN	CB-CA-C	-5.43	99.54	110.40
1	A	2	SER	C-N-CA	5.43	135.28	121.70
1	A	334	ARG	NE-CZ-NH2	-5.41	117.59	120.30
1	A	12	ALA	CB-CA-C	5.41	118.21	110.10
1	A	67	ARG	N-CA-C	-5.41	96.40	111.00
1	A	432	ALA	N-CA-CB	5.39	117.65	110.10
1	A	61	ASP	CB-CG-OD2	-5.35	113.49	118.30
1	A	322	VAL	CA-CB-CG2	5.34	118.91	110.90
1	A	239	GLU	CB-CA-C	5.31	121.02	110.40
1	A	191	ARG	N-CA-CB	-5.26	101.12	110.60
1	A	66	PHE	CB-CA-C	5.25	120.89	110.40
1	A	164	ARG	CG-CD-NE	5.23	122.78	111.80
1	A	158	TYR	CB-CG-CD1	-5.17	117.90	121.00
1	A	167	TYR	CB-CG-CD2	-5.11	117.94	121.00
1	A	208	ASP	CB-CG-OD2	-5.09	113.72	118.30
1	A	290	LYS	N-CA-CB	-5.07	101.48	110.60
1	A	48	MET	CG-SD-CE	-5.05	92.12	100.20
1	A	191	ARG	CB-CG-CD	5.02	124.66	111.60
1	A	65	ARG	N-CA-CB	5.00	119.61	110.60
1	A	8	ASP	CB-CG-OD2	-5.00	113.80	118.30

All (2) chirality outliers are listed below:

Mol	Chain	Res	Type	Atom
1	A	165	THR	CB
1	A	431	ILE	CB

All (3) planarity outliers are listed below:

Mol	Chain	Res	Type	Group
1	A	203	ILE	Mainchain
1	A	289	GLN	Sidechain
1	A	313	ARG	Sidechain

5.2 Too-close contacts [i](#)

In the following table, the Non-H and H(model) columns list the number of non-hydrogen atoms and hydrogen atoms in the chain respectively. The H(added) column lists the number of hydrogen atoms added and optimized by MolProbity. The Clashes column lists the number of clashes within the asymmetric unit, whereas Symm-Clashes lists symmetry-related clashes.

Mol	Chain	Non-H	H(model)	H(added)	Clashes	Symm-Clashes
1	A	3306	0	3297	105	1
2	A	52	0	33	2	0
3	A	9	0	4	2	0
4	A	101	0	0	3	0
All	All	3468	0	3334	107	1

The all-atom clashscore is defined as the number of clashes found per 1000 atoms (including hydrogen atoms). The all-atom clashscore for this structure is 16.

All (107) close contacts within the same asymmetric unit are listed below, sorted by their clash magnitude.

Atom-1	Atom-2	Interatomic distance (Å)	Clash overlap (Å)
1:A:163:LEU:HD12	1:A:165:THR:H	1.24	1.03
1:A:346:MET:HG2	1:A:380:VAL:HG22	1.44	0.99
1:A:67:ARG:HA	4:A:548:HOH:O	1.66	0.94
1:A:136:HIS:HD2	1:A:138:MET:H	1.10	0.93
1:A:103:THR:H	1:A:106:GLN:HG2	1.38	0.89
1:A:136:HIS:CD2	1:A:138:MET:H	1.92	0.86
1:A:301:LEU:HD23	1:A:356:ILE:HD13	1.59	0.85
1:A:92:LEU:HD23	1:A:236:SER:OG	1.82	0.79
1:A:335:GLU:O	1:A:339:LYS:HE2	1.84	0.77
1:A:125:VAL:HG13	1:A:188:LYS:HE2	1.69	0.74
1:A:106:GLN:CA	1:A:106:GLN:HE21	2.00	0.74
1:A:86:GLU:CG	1:A:87:PRO:HD2	2.17	0.73
1:A:357:VAL:HB	1:A:358:PRO:HD3	1.71	0.73
1:A:5:ASN:ND2	1:A:7:LYS:H	1.88	0.71
1:A:14:ILE:HG12	1:A:414:ALA:HB1	1.72	0.71
1:A:103:THR:N	1:A:106:GLN:HG2	2.07	0.70
1:A:5:ASN:HD22	1:A:7:LYS:H	1.41	0.69

Continued on next page...

Continued from previous page...

Atom-1	Atom-2	Interatomic distance (Å)	Clash overlap (Å)
1:A:350:VAL:CG2	1:A:380:VAL:HG21	2.24	0.67
1:A:262:PHE:O	1:A:265:ALA:HB3	1.96	0.66
1:A:86:GLU:HG3	1:A:87:PRO:HD2	1.77	0.65
1:A:136:HIS:CD2	1:A:137:PRO:HD2	2.33	0.62
1:A:136:HIS:HD2	1:A:138:MET:N	1.91	0.62
1:A:136:HIS:CG	1:A:137:PRO:HD2	2.35	0.62
1:A:289:GLN:HE21	1:A:289:GLN:CA	2.11	0.62
1:A:277:ALA:HB3	1:A:375:ASP:OD1	2.01	0.60
1:A:301:LEU:HD23	1:A:356:ILE:CD1	2.30	0.60
1:A:352:GLN:O	1:A:356:ILE:HD12	2.01	0.60
1:A:204:ASP:H	1:A:212:ASN:HD21	1.50	0.60
1:A:287:GLN:HB3	1:A:304:TYR:OH	2.02	0.60
1:A:75:GLN:NE2	1:A:86:GLU:HG3	2.18	0.59
1:A:106:GLN:HE21	1:A:106:GLN:HA	1.67	0.59
1:A:369:ASN:OD1	1:A:371:TRP:HD1	1.87	0.58
1:A:187:ALA:O	1:A:191:ARG:HB2	2.04	0.58
1:A:124:VAL:HG21	1:A:148:LEU:HD23	1.84	0.58
1:A:350:VAL:HG21	1:A:380:VAL:HG21	1.86	0.58
1:A:5:ASN:HD22	1:A:5:ASN:C	2.09	0.56
1:A:177:ASP:O	1:A:181:LYS:HG3	2.05	0.56
1:A:123:HIS:HE1	1:A:147:ALA:O	1.87	0.55
1:A:58:LEU:HD22	1:A:238:HIS:CE1	2.42	0.55
1:A:137:PRO:HG2	1:A:391:ASN:O	2.06	0.54
1:A:62:GLU:HG2	1:A:65:ARG:HH12	1.73	0.54
1:A:225:THR:O	1:A:229:ARG:HG3	2.07	0.54
1:A:232:LEU:HA	1:A:400:SER:HB2	1.90	0.54
1:A:168:TRP:CE2	1:A:169:GLU:HG2	2.43	0.53
1:A:194:TYR:CD2	1:A:389:GLU:HG3	2.44	0.53
1:A:319:GLY:HA2	1:A:369:ASN:O	2.09	0.53
1:A:211:HIS:HD2	1:A:211:HIS:O	1.92	0.52
1:A:314:VAL:O	1:A:316:PRO:HD3	2.09	0.52
1:A:37:THR:OG1	1:A:40:MET:HG3	2.10	0.52
1:A:79:PRO:HG2	1:A:107:VAL:HG21	1.90	0.52
1:A:136:HIS:O	1:A:139:SER:HB2	2.11	0.51
1:A:185:VAL:O	1:A:189:ILE:HG13	2.11	0.51
1:A:78:LEU:HB3	4:A:514:HOH:O	2.10	0.50
1:A:106:GLN:CA	1:A:106:GLN:NE2	2.73	0.49
1:A:287:GLN:HE21	1:A:287:GLN:N	2.10	0.49
1:A:124:VAL:HG21	1:A:148:LEU:CD2	2.43	0.49
1:A:357:VAL:HB	1:A:358:PRO:CD	2.41	0.49
1:A:71:ILE:HB	1:A:72:PRO:HD3	1.94	0.48

Continued on next page...

Continued from previous page...

Atom-1	Atom-2	Interatomic distance (Å)	Clash overlap (Å)
1:A:86:GLU:HG2	1:A:230:LEU:HD13	1.94	0.48
1:A:204:ASP:OD2	1:A:206:LYS:N	2.33	0.48
1:A:77:LEU:HD13	1:A:101:ILE:CD1	2.44	0.48
1:A:77:LEU:HB3	1:A:101:ILE:HD13	1.96	0.47
1:A:86:GLU:HG3	1:A:87:PRO:CD	2.44	0.47
1:A:206:LYS:HE3	1:A:206:LYS:HB2	1.53	0.47
1:A:92:LEU:CD2	1:A:236:SER:OG	2.57	0.47
1:A:162:ILE:HD12	1:A:167:TYR:CD1	2.50	0.47
1:A:233:THR:O	1:A:236:SER:HB2	2.15	0.46
1:A:67:ARG:HB2	1:A:69:PHE:CE1	2.51	0.46
1:A:221:ASP:OD2	1:A:223:GLN:N	2.39	0.46
1:A:309:LEU:HD22	1:A:364:GLN:HE22	1.78	0.46
1:A:430:LEU:HA	1:A:430:LEU:HD23	1.46	0.46
1:A:67:ARG:N	1:A:69:PHE:H	2.14	0.46
1:A:78:LEU:O	1:A:80:LYS:HE3	2.16	0.46
1:A:377:HIS:O	1:A:377:HIS:ND1	2.47	0.46
1:A:94:TRP:HB3	1:A:102:PRO:HG3	1.98	0.45
1:A:344:ASP:OD2	1:A:345:PRO:HD2	2.16	0.45
1:A:21:ILE:CD1	1:A:415:LEU:HD13	2.46	0.45
1:A:191:ARG:HD3	1:A:216:MET:O	2.16	0.45
1:A:36:ILE:HD13	1:A:36:ILE:HG21	1.69	0.44
1:A:324:ARG:HD3	1:A:324:ARG:HA	1.72	0.44
1:A:357:VAL:CB	1:A:358:PRO:HD3	2.45	0.44
1:A:318:TYR:HA	1:A:372:PRO:HA	1.99	0.44
1:A:67:ARG:HB2	1:A:69:PHE:CD1	2.52	0.43
1:A:178:LEU:O	1:A:178:LEU:HD12	2.18	0.43
1:A:211:HIS:CD2	1:A:211:HIS:C	2.91	0.43
1:A:327:ASP:O	1:A:330:TYR:HB3	2.18	0.43
2:A:700:CMC:C1	3:A:702:MLT:H2	2.48	0.43
1:A:136:HIS:HA	1:A:137:PRO:HD3	1.94	0.43
1:A:339:LYS:HA	1:A:339:LYS:HD3	1.72	0.43
1:A:59:ASP:HA	1:A:60:PRO:HD3	1.72	0.42
1:A:136:HIS:CD2	1:A:137:PRO:CD	3.01	0.42
1:A:243:VAL:HB	1:A:274:HIS:CD2	2.54	0.42
1:A:182:LEU:HD23	1:A:182:LEU:HA	1.85	0.42
1:A:77:LEU:HD13	1:A:101:ILE:HD12	2.02	0.42
1:A:324:ARG:C	1:A:325:LYS:HG2	2.39	0.42
1:A:91:GLY:HA3	4:A:514:HOH:O	2.19	0.42
1:A:163:LEU:CD1	1:A:164:ARG:N	2.82	0.42
1:A:346:MET:HB3	1:A:380:VAL:HG13	2.01	0.42
1:A:346:MET:O	1:A:350:VAL:HG23	2.19	0.42

Continued on next page...

Continued from previous page...

Atom-1	Atom-2	Interatomic distance (Å)	Clash overlap (Å)
1:A:194:TYR:CG	1:A:389:GLU:HG3	2.55	0.41
1:A:336:PHE:O	1:A:340:HIS:HD2	2.03	0.41
1:A:413:ARG:NE	1:A:413:ARG:HA	2.34	0.41
1:A:92:LEU:HA	1:A:92:LEU:HD12	1.69	0.41
1:A:288:LEU:HD13	1:A:304:TYR:CG	2.55	0.41
1:A:327:ASP:HA	1:A:328:PRO:HD2	1.92	0.41
2:A:700:CMC:H11	3:A:702:MLT:H2	2.02	0.41
1:A:5:ASN:ND2	1:A:7:LYS:N	2.63	0.40

All (1) symmetry-related close contacts are listed below. The label for Atom-2 includes the symmetry operator and encoded unit-cell translations to be applied.

Atom-1	Atom-2	Interatomic distance (Å)	Clash overlap (Å)
1:A:127:MET:CE	1:A:127:MET:CE[2_555]	1.98	0.22

5.3 Torsion angles [i](#)

5.3.1 Protein backbone [i](#)

In the following table, the Percentiles column shows the percent Ramachandran outliers of the chain as a percentile score with respect to all X-ray entries followed by that with respect to entries of similar resolution.

The Analysed column shows the number of residues for which the backbone conformation was analysed, and the total number of residues.

Mol	Chain	Analysed	Favoured	Allowed	Outliers	Percentiles
1	A	423/433 (98%)	401 (95%)	22 (5%)	0	100 100

There are no Ramachandran outliers to report.

5.3.2 Protein sidechains [i](#)

In the following table, the Percentiles column shows the percent sidechain outliers of the chain as a percentile score with respect to all X-ray entries followed by that with respect to entries of similar resolution.

The Analysed column shows the number of residues for which the sidechain conformation was analysed, and the total number of residues.

Mol	Chain	Analysed	Rotameric	Outliers	Percentiles
1	A	345/345 (100%)	296 (86%)	49 (14%)	3 0

All (49) residues with a non-rotameric sidechain are listed below:

Mol	Chain	Res	Type
1	A	2	SER
1	A	5	ASN
1	A	13	LEU
1	A	23	THR
1	A	26	GLN
1	A	46	ARG
1	A	51	LEU
1	A	54	GLU
1	A	62	GLU
1	A	76	LYS
1	A	80	LYS
1	A	86	GLU
1	A	88	LEU
1	A	106	GLN
1	A	112	LYS
1	A	120	LEU
1	A	131	PHE
1	A	149	ASN
1	A	150	SER
1	A	162	ILE
1	A	163	LEU
1	A	164	ARG
1	A	165	THR
1	A	170	MET
1	A	178	LEU
1	A	191	ARG
1	A	193	LEU
1	A	199	SER
1	A	203	ILE
1	A	205	SER
1	A	206	LYS
1	A	212	ASN
1	A	236	SER
1	A	255	LEU
1	A	282	LEU
1	A	287	GLN
1	A	289	GLN
1	A	329	ARG

Continued on next page...

Continued from previous page...

Mol	Chain	Res	Type
1	A	341	LEU
1	A	346	MET
1	A	353	LEU
1	A	362	LEU
1	A	389	GLU
1	A	397	PHE
1	A	413	ARG
1	A	421	ARG
1	A	428	ASP
1	A	430	LEU
1	A	431	ILE

Sometimes sidechains can be flipped to improve hydrogen bonding and reduce clashes. All (20) such sidechains are listed below:

Mol	Chain	Res	Type
1	A	5	ASN
1	A	26	GLN
1	A	27	GLN
1	A	106	GLN
1	A	123	HIS
1	A	136	HIS
1	A	140	GLN
1	A	149	ASN
1	A	192	ASN
1	A	211	HIS
1	A	212	ASN
1	A	215	ASN
1	A	223	GLN
1	A	267	ASN
1	A	287	GLN
1	A	289	GLN
1	A	310	ASN
1	A	340	HIS
1	A	364	GLN
1	A	383	GLN

5.3.3 RNA [i](#)

There are no RNA molecules in this entry.

5.4 Non-standard residues in protein, DNA, RNA chains [i](#)

There are no non-standard protein/DNA/RNA residues in this entry.

5.5 Carbohydrates [i](#)

There are no monosaccharides in this entry.

5.6 Ligand geometry [i](#)

2 ligands are modelled in this entry.

In the following table, the Counts columns list the number of bonds (or angles) for which Mogul statistics could be retrieved, the number of bonds (or angles) that are observed in the model and the number of bonds (or angles) that are defined in the Chemical Component Dictionary. The Link column lists molecule types, if any, to which the group is linked. The Z score for a bond length (or angle) is the number of standard deviations the observed value is removed from the expected value. A bond length (or angle) with $|Z| > 2$ is considered an outlier worth inspection. RMSZ is the root-mean-square of all Z scores of the bond lengths (or angles).

Mol	Type	Chain	Res	Link	Bond lengths			Bond angles		
					Counts	RMSZ	# Z > 2	Counts	RMSZ	# Z > 2
3	MLT	A	702	-	8,8,8	1.66	1 (12%)	10,10,10	1.72	3 (30%)
2	CMC	A	700	-	48,54,54	1.79	8 (16%)	62,80,80	1.76	13 (20%)

In the following table, the Chirals column lists the number of chiral outliers, the number of chiral centers analysed, the number of these observed in the model and the number defined in the Chemical Component Dictionary. Similar counts are reported in the Torsion and Rings columns. '-' means no outliers of that kind were identified.

Mol	Type	Chain	Res	Link	Chirals	Torsions	Rings
3	MLT	A	702	-	-	3/8/8/8	-
2	CMC	A	700	-	-	6/48/68/68	0/3/3/3

All (9) bond length outliers are listed below:

Mol	Chain	Res	Type	Atoms	Z	Observed(Å)	Ideal(Å)
2	A	700	CMC	O9P-C9P	5.42	1.33	1.23
2	A	700	CMC	P3B-O3B	5.30	1.68	1.59
2	A	700	CMC	O4B-C1B	4.27	1.46	1.40
3	A	702	MLT	O3-C2	4.07	1.51	1.42
2	A	700	CMC	P2A-O3A	3.94	1.63	1.59
2	A	700	CMC	P3B-O7A	3.29	1.60	1.50

Continued on next page...

Continued from previous page...

Mol	Chain	Res	Type	Atoms	Z	Observed(Å)	Ideal(Å)
2	A	700	CMC	C3P-N4P	3.25	1.53	1.46
2	A	700	CMC	O5P-C5P	2.45	1.28	1.23
2	A	700	CMC	O4B-C4B	2.14	1.49	1.45

All (16) bond angle outliers are listed below:

Mol	Chain	Res	Type	Atoms	Z	Observed(°)	Ideal(°)
2	A	700	CMC	C2P-S1P-C1	6.20	111.95	101.72
2	A	700	CMC	P3B-O3B-C3B	-3.98	112.80	123.43
2	A	700	CMC	O6A-CCP-CBP	-3.59	104.77	110.55
2	A	700	CMC	CDP-CBP-CCP	3.48	113.97	108.22
2	A	700	CMC	CEP-CBP-CCP	-3.32	102.74	108.22
2	A	700	CMC	O21-C2-C1	-3.22	114.16	122.85
3	A	702	MLT	C2-C3-C4	3.17	120.37	112.08
2	A	700	CMC	C4B-O4B-C1B	-3.02	107.16	109.92
2	A	700	CMC	C4A-C5A-N7A	2.92	112.42	109.34
2	A	700	CMC	C5A-C6A-N6A	2.90	124.73	120.31
2	A	700	CMC	O5A-P2A-O3A	2.88	115.07	107.27
3	A	702	MLT	O3-C2-C3	2.81	116.72	109.96
2	A	700	CMC	O22-C2-C1	2.81	122.49	113.38
2	A	700	CMC	C5A-C6A-N1A	-2.78	113.61	120.23
2	A	700	CMC	CEP-CBP-CAP	2.12	112.39	108.77
3	A	702	MLT	O2-C1-C2	2.01	117.00	112.74

There are no chirality outliers.

All (9) torsion outliers are listed below:

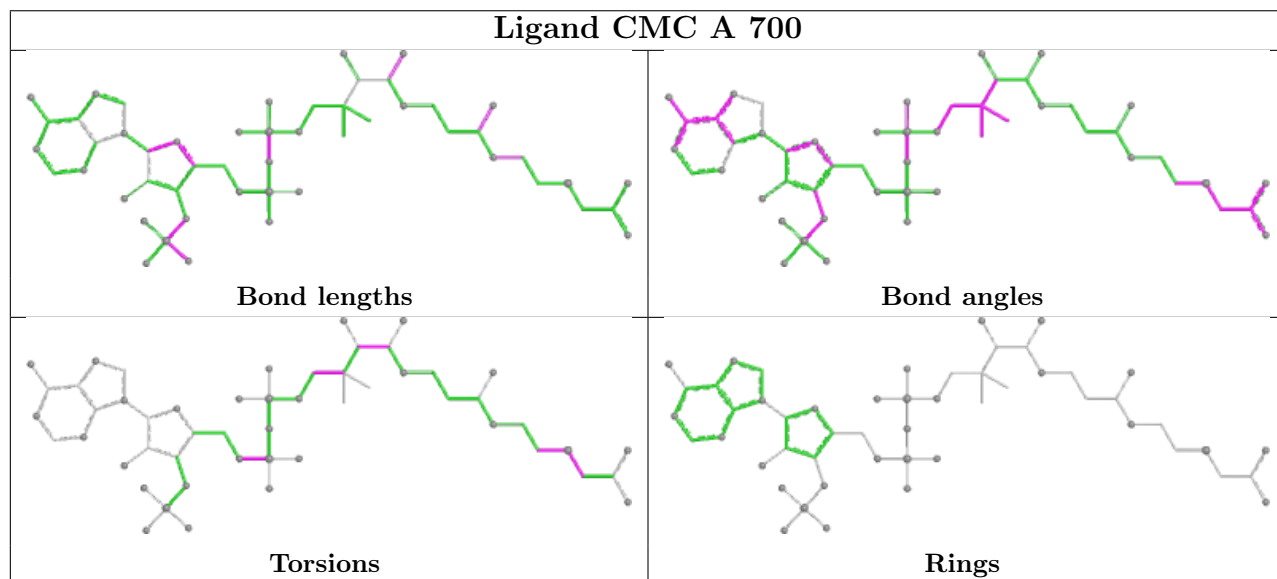
Mol	Chain	Res	Type	Atoms
2	A	700	CMC	C3P-C2P-S1P-C1
3	A	702	MLT	O2-C1-C2-C3
3	A	702	MLT	C1-C2-C3-C4
2	A	700	CMC	CEP-CBP-CCP-O6A
2	A	700	CMC	C5B-O5B-P1A-O1A
2	A	700	CMC	N8P-C9P-CAP-OAP
3	A	702	MLT	O1-C1-C2-C3
2	A	700	CMC	CDP-CBP-CCP-O6A
2	A	700	CMC	C2-C1-S1P-C2P

There are no ring outliers.

2 monomers are involved in 2 short contacts:

Mol	Chain	Res	Type	Clashes	Symm-Clashes
3	A	702	MLT	2	0
2	A	700	CMC	2	0

The following is a two-dimensional graphical depiction of Mogul quality analysis of bond lengths, bond angles, torsion angles, and ring geometry for all instances of the Ligand of Interest. In addition, ligands with molecular weight > 250 and outliers as shown on the validation Tables will also be included. For torsion angles, if less than 5% of the Mogul distribution of torsion angles is within 10 degrees of the torsion angle in question, then that torsion angle is considered an outlier. Any bond that is central to one or more torsion angles identified as an outlier by Mogul will be highlighted in the graph. For rings, the root-mean-square deviation (RMSD) between the ring in question and similar rings identified by Mogul is calculated over all ring torsion angles. If the average RMSD is greater than 60 degrees and the minimal RMSD between the ring in question and any Mogul-identified rings is also greater than 60 degrees, then that ring is considered an outlier. The outliers are highlighted in purple. The color gray indicates Mogul did not find sufficient equivalents in the CSD to analyse the geometry.



5.7 Other polymers [\(i\)](#)

There are no such residues in this entry.

5.8 Polymer linkage issues [\(i\)](#)

There are no chain breaks in this entry.

6 Fit of model and data

6.1 Protein, DNA and RNA chains

EDS was not executed - this section is therefore empty.

6.2 Non-standard residues in protein, DNA, RNA chains

EDS was not executed - this section is therefore empty.

6.3 Carbohydrates

EDS was not executed - this section is therefore empty.

6.4 Ligands

EDS was not executed - this section is therefore empty.

6.5 Other polymers

EDS was not executed - this section is therefore empty.