



# Full wwPDB X-ray Structure Validation Report ⓘ

Oct 27, 2019 – 10:58 PM EDT

PDB ID : 1CXL  
Title : COMPLEX BETWEEN A COVALENT INTERMEDIATE AND BACILLUS CIRCULANS STRAIN 251 CGTASE E257Q  
Authors : Uitdehaag, J.C.M.; Dijkstra, B.W.  
Deposited on : 1999-02-27  
Resolution : 1.81 Å(reported)

This is a Full wwPDB X-ray Structure Validation Report for a publicly released PDB entry.

We welcome your comments at [validation@mail.wwpdb.org](mailto:validation@mail.wwpdb.org)

A user guide is available at

<https://www.wwpdb.org/validation/2017/XrayValidationReportHelp>

with specific help available everywhere you see the ⓘ symbol.

---

The following versions of software and data (see [references ⓘ](#)) were used in the production of this report:

MolProbity : 4.02b-467  
Mogul : 1.8.0 (224370), CSD as540be (2019)  
Xtriage (Phenix) : 1.13  
EDS : 2.4  
Percentile statistics : 20171227.v01 (using entries in the PDB archive December 27th 2017)  
Refmac : 5.8.0158  
CCP4 : 7.0 (Gargrove)  
Ideal geometry (proteins) : Engh & Huber (2001)  
Ideal geometry (DNA, RNA) : Parkinson et al. (1996)  
Validation Pipeline (wwPDB-VP) : 2.4

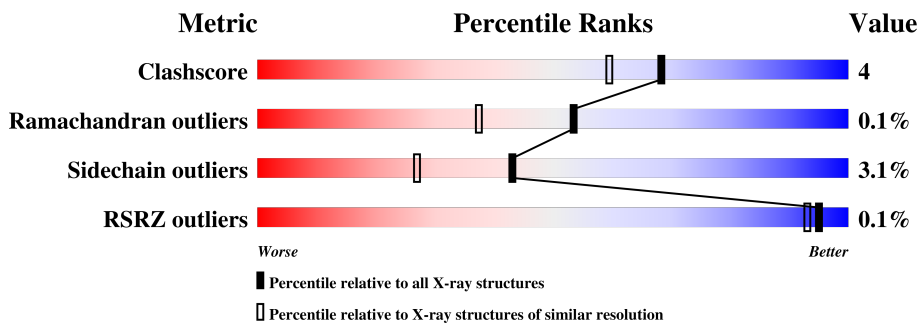
# 1 Overall quality at a glance

The following experimental techniques were used to determine the structure:

*X-RAY DIFFRACTION*

The reported resolution of this entry is 1.81 Å.

Percentile scores (ranging between 0-100) for global validation metrics of the entry are shown in the following graphic. The table shows the number of entries on which the scores are based.



Metric	Whole archive (#Entries)	Similar resolution (#Entries, resolution range(Å))
Clashscore	122126	7349 (1.84-1.80)
Ramachandran outliers	120053	7272 (1.84-1.80)
Sidechain outliers	120020	7272 (1.84-1.80)
RSRZ outliers	108989	6347 (1.84-1.80)

The table below summarises the geometric issues observed across the polymeric chains and their fit to the electron density. The red, orange, yellow and green segments on the lower bar indicate the fraction of residues that contain outliers for  $\geq 3$ , 2, 1 and 0 types of geometric quality criteria. A grey segment represents the fraction of residues that are not modelled. The numeric value for each fraction is indicated below the corresponding segment, with a dot representing fractions  $\leq 5\%$ . The upper red bar (where present) indicates the fraction of residues that have poor fit to the electron density. The numeric value is given above the bar.

Mol	Chain	Length	Quality of chain
1	A	686	

The following table lists non-polymeric compounds, carbohydrate monomers and non-standard residues in protein, DNA, RNA chains that are outliers for geometric or electron-density-fit criteria:

Mol	Type	Chain	Res	Chirality	Geometry	Clashes	Electron density
2	GLC	A	690	X	-	-	-

## 2 Entry composition [i](#)

There are 7 unique types of molecules in this entry. The entry contains 6063 atoms, of which 0 are hydrogens and 0 are deuteriums.

In the tables below, the ZeroOcc column contains the number of atoms modelled with zero occupancy, the AltConf column contains the number of residues with at least one atom in alternate conformation and the Trace column contains the number of residues modelled with at most 2 atoms.

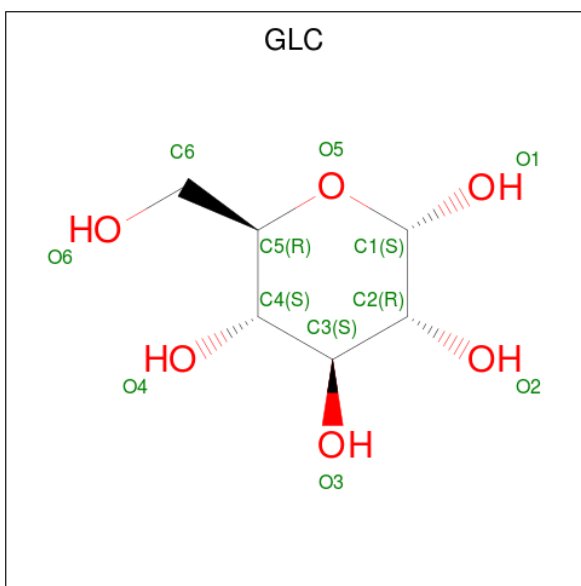
- Molecule 1 is a protein called PROTEIN (CYCLODEXTRIN-GLYCOSYLTRANSFERASE).

Mol	Chain	Residues	Atoms					ZeroOcc	AltConf	Trace
			Total	C	N	O	S			
1	A	686	5264	3321	901	1027	15	0	0	0

There are 2 discrepancies between the modelled and reference sequences:

Chain	Residue	Modelled	Actual	Comment	Reference
A	257	GLN	GLU	ENGINEERED	UNP P43379
A	400	SER	CYS	SEE REMARK 999	UNP P43379

- Molecule 2 is ALPHA-D-GLUCOSE (three-letter code: GLC) (formula: C<sub>6</sub>H<sub>12</sub>O<sub>6</sub>).



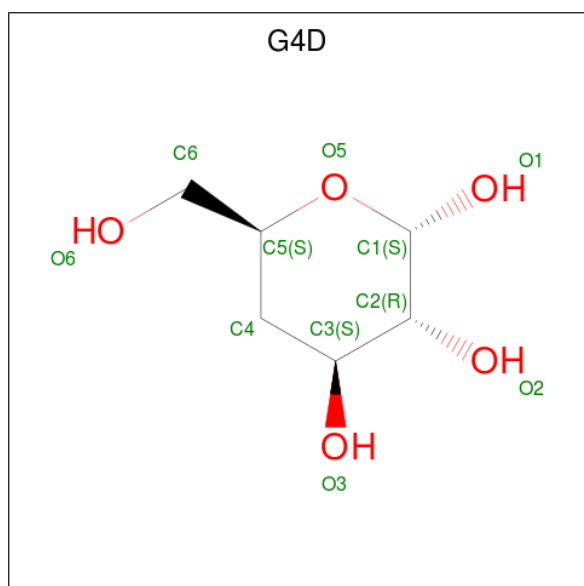
Mol	Chain	Residues	Atoms			ZeroOcc	AltConf
			Total	C	O		
2	A	1	10	6	4	0	0
2	A	1	11	6	5	0	0

*Continued on next page...*

Continued from previous page...

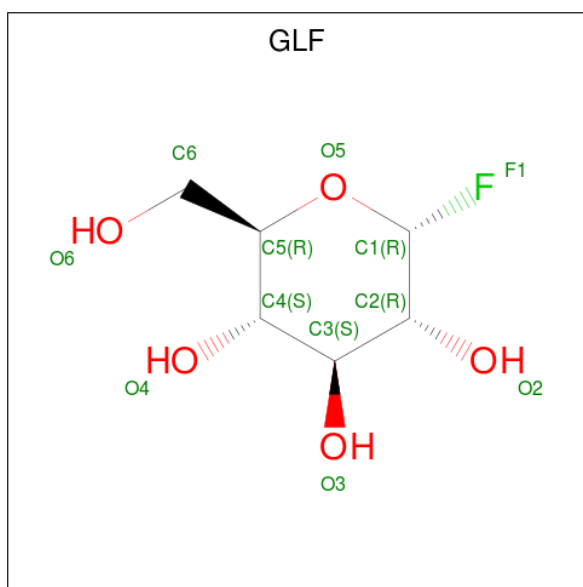
Mol	Chain	Residues	Atoms			ZeroOcc	AltConf
2	A	1	Total	C	O	0	0
			11	6	5		
2	A	1	Total	C	O	0	0
			11	6	5		
2	A	1	Total	C	O	0	0
			11	6	5		

- Molecule 3 is 4-DEOXY-ALPHA-D-GLUCOSE (three-letter code: G4D) (formula:  $C_6H_{12}O_5$ ).



Mol	Chain	Residues	Atoms			ZeroOcc	AltConf
3	A	1	Total	C	O	0	0
			11	6	5		
3	A	1	Total	C	O	0	0
			11	6	5		
3	A	1	Total	C	O	0	0
			11	6	5		
3	A	1	Total	C	O	0	0
			11	6	5		

- Molecule 4 is 1-FLUORO-ALPHA-1-DEOXY-D-GLUCOSE (three-letter code: GLF) (formula:  $C_6H_{11}FO_5$ ).

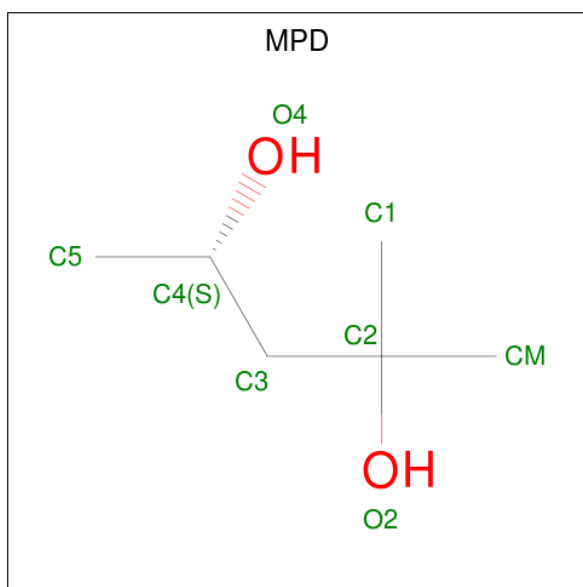


Mol	Chain	Residues	Atoms			ZeroOcc	AltConf	
4	A	1	Total	C	F	O	0	0
			11	6	1	4		
4	A	1	Total	C	F	O	0	0
			11	6	1	4		

- Molecule 5 is CALCIUM ION (three-letter code: CA) (formula: Ca).

Mol	Chain	Residues	Atoms		ZeroOcc	AltConf
5	A	2	Total	Ca	0	0
			2	2		

- Molecule 6 is (4S)-2-METHYL-2,4-PENTANEDIOL (three-letter code: MPD) (formula: C<sub>6</sub>H<sub>14</sub>O<sub>2</sub>).



Mol	Chain	Residues	Atoms	ZeroOcc	AltConf
6	A	1	Total C O 8 6 2	0	0

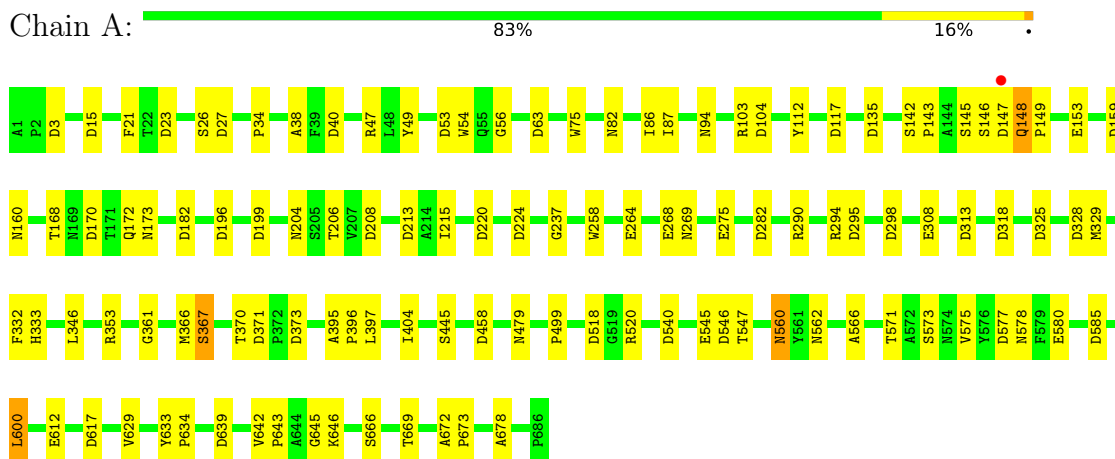
- Molecule 7 is water.

Mol	Chain	Residues	Atoms	ZeroOcc	AltConf
7	A	669	Total O 669 669	0	0

### 3 Residue-property plots [i](#)

These plots are drawn for all protein, RNA and DNA chains in the entry. The first graphic for a chain summarises the proportions of the various outlier classes displayed in the second graphic. The second graphic shows the sequence view annotated by issues in geometry and electron density. Residues are color-coded according to the number of geometric quality criteria for which they contain at least one outlier: green = 0, yellow = 1, orange = 2 and red = 3 or more. A red dot above a residue indicates a poor fit to the electron density ( $RSRZ > 2$ ). Stretches of 2 or more consecutive residues without any outlier are shown as a green connector. Residues present in the sample, but not in the model, are shown in grey.

- Molecule 1: PROTEIN (CYCLODEXTRIN-GLYCOSYLTRANSFERASE)



## 4 Data and refinement statistics

Property	Value	Source
Space group	P 21 21 21	Depositor
Cell constants a, b, c, $\alpha$ , $\beta$ , $\gamma$	117.07Å 109.28Å 65.33Å 90.00° 90.00° 90.00°	Depositor
Resolution (Å)	8.00 – 1.81 58.54 – 1.81	Depositor EDS
% Data completeness (in resolution range)	94.0 (8.00-1.81) 94.9 (58.54-1.81)	Depositor EDS
$R_{merge}$	0.05	Depositor
$R_{sym}$	(Not available)	Depositor
$\langle I/\sigma(I) \rangle$ <sup>1</sup>	2.23 (at 1.81Å)	Xtrriage
Refinement program	TNT	Depositor
R, $R_{free}$	0.155 , 0.190 0.153 , (Not available)	Depositor DCC
$R_{free}$ test set	No test flags present.	wwPDB-VP
Wilson B-factor (Å <sup>2</sup> )	12.7	Xtrriage
Anisotropy	0.263	Xtrriage
Bulk solvent $k_{sol}$ (e/Å <sup>3</sup> ), $B_{sol}$ (Å <sup>2</sup> )	0.38 , 82.4	EDS
L-test for twinning <sup>2</sup>	$\langle  L  \rangle = 0.49$ , $\langle L^2 \rangle = 0.32$	Xtrriage
Estimated twinning fraction	No twinning to report.	Xtrriage
$F_o, F_c$ correlation	0.96	EDS
Total number of atoms	6063	wwPDB-VP
Average B, all atoms (Å <sup>2</sup> )	17.0	wwPDB-VP

Xtrriage's analysis on translational NCS is as follows: *The largest off-origin peak in the Patterson function is 4.10% of the height of the origin peak. No significant pseudotranslation is detected.*

<sup>1</sup>Intensities estimated from amplitudes.

<sup>2</sup>Theoretical values of  $\langle |L| \rangle$ ,  $\langle L^2 \rangle$  for acentric reflections are 0.5, 0.333 respectively for untwinned datasets, and 0.375, 0.2 for perfectly twinned datasets.



## 5 Model quality i

### 5.1 Standard geometry i

Bond lengths and bond angles in the following residue types are not validated in this section: MPD, GLC, G4D, CA, GLF

The Z score for a bond length (or angle) is the number of standard deviations the observed value is removed from the expected value. A bond length (or angle) with  $|Z| > 5$  is considered an outlier worth inspection. RMSZ is the root-mean-square of all Z scores of the bond lengths (or angles).

Mol	Chain	Bond lengths		Bond angles	
		RMSZ	# Z  >5	RMSZ	# Z  >5
1	A	0.66	7/5394 (0.1%)	0.97	60/7352 (0.8%)

All (7) bond length outliers are listed below:

Mol	Chain	Res	Type	Atoms	Z	Observed(Å)	Ideal(Å)
1	A	580	GLU	CD-OE2	6.51	1.32	1.25
1	A	545	GLU	CD-OE1	5.33	1.31	1.25
1	A	275	GLU	CD-OE2	5.26	1.31	1.25
1	A	153	GLU	CD-OE2	5.24	1.31	1.25
1	A	264	GLU	CD-OE2	5.18	1.31	1.25
1	A	308	GLU	CD-OE2	5.15	1.31	1.25
1	A	612	GLU	CD-OE2	5.12	1.31	1.25

All (60) bond angle outliers are listed below:

Mol	Chain	Res	Type	Atoms	Z	Observed(°)	Ideal(°)
1	A	577	ASP	CB-CG-OD1	-7.08	111.93	118.30
1	A	371	ASP	CB-CG-OD2	-7.08	111.93	118.30
1	A	458	ASP	CB-CG-OD2	-6.45	112.50	118.30
1	A	170	ASP	CB-CG-OD2	-6.41	112.53	118.30
1	A	318	ASP	CB-CG-OD2	-6.37	112.57	118.30
1	A	63	ASP	CB-CG-OD2	-6.33	112.60	118.30
1	A	117	ASP	CB-CG-OD2	-6.28	112.65	118.30
1	A	373	ASP	CB-CG-OD2	-6.21	112.71	118.30
1	A	282	ASP	CB-CG-OD2	-6.18	112.74	118.30
1	A	298	ASP	CB-CG-OD1	6.07	123.76	118.30
1	A	328	ASP	CB-CG-OD2	-6.06	112.84	118.30
1	A	585	ASP	CB-CG-OD2	-6.06	112.84	118.30
1	A	104	ASP	CB-CG-OD2	-5.99	112.91	118.30
1	A	135	ASP	CB-CG-OD2	-5.94	112.96	118.30

*Continued on next page...*

*Continued from previous page...*

Mol	Chain	Res	Type	Atoms	Z	Observed(°)	Ideal(°)
1	A	371	ASP	CB-CG-OD1	5.92	123.63	118.30
1	A	27	ASP	CB-CG-OD2	-5.88	113.00	118.30
1	A	213	ASP	CB-CG-OD2	-5.88	113.00	118.30
1	A	328	ASP	CB-CG-OD1	5.87	123.59	118.30
1	A	27	ASP	CB-CG-OD1	5.83	123.55	118.30
1	A	199	ASP	CB-CG-OD2	-5.78	113.10	118.30
1	A	224	ASP	CB-CG-OD2	-5.76	113.11	118.30
1	A	3	ASP	CB-CG-OD1	5.75	123.47	118.30
1	A	208	ASP	CB-CG-OD2	-5.71	113.16	118.30
1	A	617	ASP	CB-CG-OD2	-5.70	113.17	118.30
1	A	325	ASP	CB-CG-OD1	5.70	123.43	118.30
1	A	135	ASP	CB-CG-OD1	5.66	123.39	118.30
1	A	170	ASP	CB-CG-OD1	5.65	123.39	118.30
1	A	196	ASP	CB-CG-OD2	-5.60	113.26	118.30
1	A	295	ASP	CB-CG-OD1	5.60	123.34	118.30
1	A	458	ASP	CB-CG-OD1	5.60	123.34	118.30
1	A	318	ASP	CB-CG-OD1	5.57	123.31	118.30
1	A	298	ASP	CB-CG-OD2	-5.56	113.30	118.30
1	A	617	ASP	CB-CG-OD1	5.56	123.30	118.30
1	A	585	ASP	CB-CG-OD1	5.55	123.30	118.30
1	A	577	ASP	CB-CG-OD2	5.52	123.27	118.30
1	A	117	ASP	CB-CG-OD1	5.51	123.26	118.30
1	A	518	ASP	CB-CG-OD2	-5.51	113.34	118.30
1	A	313	ASP	CB-CG-OD2	-5.50	113.35	118.30
1	A	325	ASP	CB-CG-OD2	-5.49	113.36	118.30
1	A	40	ASP	CB-CG-OD2	-5.46	113.39	118.30
1	A	159	ASP	CB-CG-OD2	-5.44	113.41	118.30
1	A	104	ASP	CB-CG-OD1	5.43	123.19	118.30
1	A	23	ASP	CB-CG-OD2	-5.41	113.43	118.30
1	A	182	ASP	CB-CG-OD2	-5.40	113.44	118.30
1	A	546	ASP	CB-CG-OD2	-5.39	113.45	118.30
1	A	63	ASP	CB-CG-OD1	5.38	123.14	118.30
1	A	282	ASP	CB-CG-OD1	5.36	123.13	118.30
1	A	40	ASP	CB-CG-OD1	5.35	123.11	118.30
1	A	3	ASP	CB-CG-OD2	-5.34	113.49	118.30
1	A	15	ASP	CB-CG-OD2	-5.24	113.58	118.30
1	A	196	ASP	CB-CG-OD1	5.23	123.01	118.30
1	A	220	ASP	CB-CG-OD2	-5.22	113.60	118.30
1	A	295	ASP	CB-CG-OD2	-5.21	113.61	118.30
1	A	373	ASP	CB-CG-OD1	5.20	122.98	118.30
1	A	546	ASP	CB-CG-OD1	5.16	122.94	118.30
1	A	199	ASP	CB-CG-OD1	5.15	122.94	118.30

*Continued on next page...*

Continued from previous page...

Mol	Chain	Res	Type	Atoms	Z	Observed(°)	Ideal(°)
1	A	208	ASP	CB-CG-OD1	5.12	122.91	118.30
1	A	540	ASP	CB-CG-OD2	-5.11	113.70	118.30
1	A	213	ASP	CB-CG-OD1	5.08	122.87	118.30
1	A	53	ASP	CB-CG-OD2	-5.02	113.78	118.30

There are no chirality outliers.

There are no planarity outliers.

## 5.2 Too-close contacts [i](#)

In the following table, the Non-H and H(model) columns list the number of non-hydrogen atoms and hydrogen atoms in the chain respectively. The H(added) column lists the number of hydrogen atoms added and optimized by MolProbity. The Clashes column lists the number of clashes within the asymmetric unit, whereas Symm-Clashes lists symmetry related clashes.

Mol	Chain	Non-H	H(model)	H(added)	Clashes	Symm-Clashes
1	A	5264	0	5027	41	0
2	A	54	0	45	1	0
3	A	44	0	44	0	0
4	A	22	0	18	2	0
5	A	2	0	0	0	0
6	A	8	0	14	0	0
7	A	669	0	0	4	0
All	All	6063	0	5148	43	0

The all-atom clashscore is defined as the number of clashes found per 1000 atoms (including hydrogen atoms). The all-atom clashscore for this structure is 4.

All (43) close contacts within the same asymmetric unit are listed below, sorted by their clash magnitude.

Atom-1	Atom-2	Interatomic distance (Å)	Clash overlap (Å)
4:A:698:GLF:F1	4:A:698:GLF:C1	1.63	1.37
4:A:695:GLF:F1	4:A:695:GLF:C1	1.70	1.29
1:A:560:ASN:HD21	1:A:578:ASN:HA	1.28	0.94
1:A:560:ASN:ND2	1:A:578:ASN:HA	1.92	0.83
1:A:370:THR:HG23	7:A:1204:HOH:O	1.85	0.77
1:A:142:SER:HB2	1:A:143:PRO:HD2	1.70	0.72
1:A:258:TRP:CH2	1:A:268:GLU:HG2	2.36	0.61
1:A:560:ASN:HD21	1:A:578:ASN:CA	2.09	0.59
1:A:258:TRP:HH2	1:A:268:GLU:HG2	1.68	0.58

Continued on next page...

*Continued from previous page...*

Atom-1	Atom-2	Interatomic distance (Å)	Clash overlap (Å)
1:A:142:SER:HB2	1:A:143:PRO:CD	2.32	0.57
1:A:333:HIS:O	1:A:367:SER:HB3	2.04	0.57
1:A:370:THR:HG22	7:A:1219:HOH:O	2.04	0.57
1:A:34:PRO:HG2	1:A:49:TYR:CG	2.41	0.55
1:A:397:LEU:HB3	1:A:404:ILE:HD12	1.88	0.55
1:A:172:GLN:HB2	7:A:1066:HOH:O	2.09	0.53
1:A:87:ILE:CD1	1:A:143:PRO:HG2	2.39	0.52
1:A:562:ASN:HB3	1:A:575:VAL:CG1	2.41	0.51
1:A:47:ARG:HD3	1:A:94:ASN:OD1	2.11	0.51
1:A:600:LEU:HD13	2:A:693:GLC:H3	1.93	0.51
1:A:38:ALA:HB2	1:A:86:ILE:HD11	1.92	0.50
1:A:633:TYR:CG	1:A:634:PRO:HA	2.48	0.49
1:A:361:GLY:HA3	1:A:366:MET:SD	2.53	0.47
1:A:520:ARG:HD3	1:A:547:THR:HG22	1.96	0.47
1:A:669:THR:HG21	7:A:1362:HOH:O	2.16	0.46
1:A:633:TYR:CD2	1:A:634:PRO:HA	2.51	0.46
1:A:290:ARG:CZ	1:A:329:MET:HE2	2.47	0.45
1:A:149:PRO:HG3	1:A:168:THR:HG21	2.00	0.44
1:A:445:SER:CB	1:A:479:ASN:ND2	2.82	0.43
1:A:204:ASN:OD1	1:A:206:THR:HB	2.18	0.43
1:A:673:PRO:HG3	1:A:678:ALA:HB2	2.01	0.43
1:A:645:GLY:HA2	1:A:672:ALA:O	2.20	0.42
1:A:600:LEU:HA	1:A:600:LEU:HD12	1.81	0.42
1:A:395:ALA:HB3	1:A:396:PRO:HD3	2.00	0.42
1:A:499:PRO:HB2	1:A:573:SER:HB3	2.02	0.41
1:A:26:SER:O	1:A:56:GLY:HA3	2.21	0.41
1:A:237:GLY:HA3	1:A:639:ASP:O	2.20	0.41
1:A:566:ALA:HA	1:A:571:THR:O	2.21	0.41
1:A:445:SER:HB2	1:A:479:ASN:ND2	2.36	0.41
1:A:215:ILE:HD12	1:A:215:ILE:HA	1.90	0.40
1:A:54:TRP:CE2	1:A:112:TYR:HB3	2.57	0.40
1:A:294:ARG:HB2	1:A:332:PHE:CZ	2.56	0.40
1:A:145:SER:HB3	1:A:148:GLN:HB3	2.03	0.40
1:A:642:VAL:HB	1:A:643:PRO:HD2	2.04	0.40

There are no symmetry-related clashes.

## 5.3 Torsion angles [i](#)

### 5.3.1 Protein backbone [i](#)

In the following table, the Percentiles column shows the percent Ramachandran outliers of the chain as a percentile score with respect to all X-ray entries followed by that with respect to entries of similar resolution.

The Analysed column shows the number of residues for which the backbone conformation was analysed, and the total number of residues.

Mol	Chain	Analysed	Favoured	Allowed	Outliers	Percentiles
1	A	684/686 (100%)	662 (97%)	21 (3%)	1 (0%)	53 37

All (1) Ramachandran outliers are listed below:

Mol	Chain	Res	Type
1	A	629	VAL

### 5.3.2 Protein sidechains [i](#)

In the following table, the Percentiles column shows the percent sidechain outliers of the chain as a percentile score with respect to all X-ray entries followed by that with respect to entries of similar resolution.

The Analysed column shows the number of residues for which the sidechain conformation was analysed, and the total number of residues.

Mol	Chain	Analysed	Rotameric	Outliers	Percentiles
1	A	556/556 (100%)	539 (97%)	17 (3%)	43 27

All (17) residues with a non-rotameric sidechain are listed below:

Mol	Chain	Res	Type
1	A	21	PHE
1	A	75	TRP
1	A	82	ASN
1	A	103	ARG
1	A	146	SER
1	A	147	ASP
1	A	148	GLN
1	A	160	ASN
1	A	173	ASN
1	A	269	ASN

*Continued on next page...*

*Continued from previous page...*

Mol	Chain	Res	Type
1	A	346	LEU
1	A	353	ARG
1	A	367	SER
1	A	560	ASN
1	A	600	LEU
1	A	646	LYS
1	A	666	SER

Some sidechains can be flipped to improve hydrogen bonding and reduce clashes. All (4) such sidechains are listed below:

Mol	Chain	Res	Type
1	A	160	ASN
1	A	269	ASN
1	A	479	ASN
1	A	560	ASN

### 5.3.3 RNA [i](#)

There are no RNA molecules in this entry.

### 5.4 Non-standard residues in protein, DNA, RNA chains [i](#)

There are no non-standard protein/DNA/RNA residues in this entry.

### 5.5 Carbohydrates [i](#)

There are no carbohydrates in this entry.

### 5.6 Ligand geometry [i](#)

Of 14 ligands modelled in this entry, 2 are monoatomic - leaving 12 for Mogul analysis.

In the following table, the Counts columns list the number of bonds (or angles) for which Mogul statistics could be retrieved, the number of bonds (or angles) that are observed in the model and the number of bonds (or angles) that are defined in the Chemical Component Dictionary. The Link column lists molecule types, if any, to which the group is linked. The Z score for a bond length (or angle) is the number of standard deviations the observed value is removed from the expected value. A bond length (or angle) with  $|Z| > 2$  is considered an outlier worth inspection. RMSZ is the root-mean-square of all Z scores of the bond lengths (or angles).

Mol	Type	Chain	Res	Link	Bond lengths			Bond angles		
					Counts	RMSZ	# Z  > 2	Counts	RMSZ	# Z  > 2
2	GLC	A	690	1,2	10,10,12	0.24	0	11,13,17	1.33	2 (18%)
2	GLC	A	691	3,2	11,11,12	0.34	0	15,15,17	0.58	0
3	G4D	A	692	2	11,11,11	0.37	0	15,15,15	0.77	1 (6%)
2	GLC	A	693	3	11,11,12	0.40	0	15,15,17	0.73	0
3	G4D	A	694	2	11,11,11	0.36	0	15,15,15	0.68	0
4	GLF	A	695	2	11,11,12	7.26	2 (18%)	14,15,17	0.85	1 (7%)
2	GLC	A	696	3,4	11,11,12	0.43	0	15,15,17	0.67	0
3	G4D	A	697	2	11,11,11	0.37	0	15,15,15	0.67	0
4	GLF	A	698	2	11,11,12	5.62	2 (18%)	14,15,17	0.95	0
2	GLC	A	699	3,4	11,11,12	0.46	0	15,15,17	0.63	0
3	G4D	A	700	2	11,11,11	0.37	0	15,15,15	0.61	0
6	MPD	A	701	-	7,7,7	1.50	2 (28%)	9,10,10	0.82	0

In the following table, the Chirals column lists the number of chiral outliers, the number of chiral centers analysed, the number of these observed in the model and the number defined in the Chemical Component Dictionary. Similar counts are reported in the Torsion and Rings columns. '-' means no outliers of that kind were identified.

Mol	Type	Chain	Res	Link	Chirals	Torsions	Rings
2	GLC	A	690	1,2	1/1/3/5	1/2/15/22	0/1/1/1
2	GLC	A	691	3,2	-	0/2/18/22	0/1/1/1
3	G4D	A	692	2	-	2/2/18/18	0/1/1/1
2	GLC	A	693	3	-	0/2/18/22	0/1/1/1
3	G4D	A	694	2	-	0/2/18/18	0/1/1/1
4	GLF	A	695	2	-	0/2/18/22	0/1/1/1
2	GLC	A	696	3,4	-	0/2/18/22	0/1/1/1
3	G4D	A	697	2	-	2/2/18/18	0/1/1/1
4	GLF	A	698	2	-	0/2/18/22	0/1/1/1
2	GLC	A	699	3,4	-	0/2/18/22	0/1/1/1
3	G4D	A	700	2	-	2/2/18/18	0/1/1/1
6	MPD	A	701	-	-	0/5/5/5	-

All (6) bond length outliers are listed below:

Mol	Chain	Res	Type	Atoms	Z	Observed(Å)	Ideal(Å)
4	A	695	GLF	F1-C1	23.88	1.70	1.39
4	A	698	GLF	F1-C1	18.42	1.63	1.39
6	A	701	MPD	C3-C2	-3.15	1.45	1.53
4	A	695	GLF	O5-C1	2.64	1.42	1.40
4	A	698	GLF	O5-C1	2.54	1.42	1.40
6	A	701	MPD	C5-C4	-2.28	1.41	1.51

All (4) bond angle outliers are listed below:

Mol	Chain	Res	Type	Atoms	Z	Observed(°)	Ideal(°)
2	A	690	GLC	O5-C5-C4	-2.97	105.46	110.75
3	A	692	G4D	C4-C3-C2	2.44	113.80	110.60
4	A	695	GLF	F1-C1-O5	-2.04	104.80	108.18
2	A	690	GLC	C4-C3-C2	-2.03	107.76	110.27

All (1) chirality outliers are listed below:

Mol	Chain	Res	Type	Atom
2	A	690	GLC	C1

All (7) torsion outliers are listed below:

Mol	Chain	Res	Type	Atoms
3	A	700	G4D	C4-C5-C6-O6
3	A	700	G4D	O5-C5-C6-O6
3	A	692	G4D	C4-C5-C6-O6
3	A	692	G4D	O5-C5-C6-O6
3	A	697	G4D	C4-C5-C6-O6
3	A	697	G4D	O5-C5-C6-O6
2	A	690	GLC	C4-C5-C6-O6

There are no ring outliers.

3 monomers are involved in 3 short contacts:

Mol	Chain	Res	Type	Clashes	Symm-Clashes
2	A	693	GLC	1	0
4	A	695	GLF	1	0
4	A	698	GLF	1	0

## 5.7 Other polymers [i](#)

There are no such residues in this entry.

## 5.8 Polymer linkage issues [i](#)

There are no chain breaks in this entry.



## 6 Fit of model and data [i](#)

### 6.1 Protein, DNA and RNA chains [i](#)

In the following table, the column labelled ‘#RSRZ> 2’ contains the number (and percentage) of RSRZ outliers, followed by percent RSRZ outliers for the chain as percentile scores relative to all X-ray entries and entries of similar resolution. The OWAB column contains the minimum, median, 95<sup>th</sup> percentile and maximum values of the occupancy-weighted average B-factor per residue. The column labelled ‘Q< 0.9’ lists the number of (and percentage) of residues with an average occupancy less than 0.9.

Mol	Chain	Analysed	<RSRZ>	#RSRZ>2	OWAB(Å <sup>2</sup> )	Q<0.9
1	A	686/686 (100%)	-0.60	1 (0%) 95   93	8, 14, 28, 65	0

All (1) RSRZ outliers are listed below:

Mol	Chain	Res	Type	RSRZ
1	A	147	ASP	2.4

### 6.2 Non-standard residues in protein, DNA, RNA chains [i](#)

There are no non-standard protein/DNA/RNA residues in this entry.

### 6.3 Carbohydrates [i](#)

There are no carbohydrates in this entry.

### 6.4 Ligands [i](#)

In the following table, the Atoms column lists the number of modelled atoms in the group and the number defined in the chemical component dictionary. The B-factors column lists the minimum, median, 95<sup>th</sup> percentile and maximum values of B factors of atoms in the group. The column labelled ‘Q< 0.9’ lists the number of atoms with occupancy less than 0.9.

Mol	Type	Chain	Res	Atoms	RSCC	RSR	B-factors(Å <sup>2</sup> )	Q<0.9
3	G4D	A	692	11/11	0.76	0.27	30,43,50,54	0
6	MPD	A	701	8/8	0.82	0.16	41,43,45,45	0
3	G4D	A	700	11/11	0.86	0.17	23,35,44,49	0
3	G4D	A	697	11/11	0.91	0.17	28,39,46,50	0
2	GLC	A	693	11/12	0.94	0.08	21,23,28,31	0
2	GLC	A	691	11/12	0.95	0.09	14,17,21,22	0

*Continued on next page...*

*Continued from previous page...*

Mol	Type	Chain	Res	Atoms	RSCC	RSR	B-factors( $\text{\AA}^2$ )	Q<0.9
3	G4D	A	694	11/11	0.96	0.07	15,17,20,20	0
2	GLC	A	696	11/12	0.96	0.07	16,18,21,24	0
2	GLC	A	690	10/12	0.96	0.09	11,12,14,16	0
2	GLC	A	699	11/12	0.96	0.08	12,14,18,20	0
4	GLF	A	698	11/12	0.97	0.08	9,11,17,20	0
4	GLF	A	695	11/12	0.97	0.08	18,19,24,27	0
5	CA	A	688	1/1	0.99	0.07	18,18,18,18	0
5	CA	A	689	1/1	0.99	0.07	12,12,12,12	0

## 6.5 Other polymers [i](#)

There are no such residues in this entry.