



Full wwPDB X-ray Structure Validation Report ⓘ

Nov 20, 2023 – 05:08 PM JST

PDB ID : 7CY8
Title : Crystal Structure of CMD1 in complex with 5mC-DNA and vitamin C
Authors : Li, W.; Zhang, T.; Sun, M.; Ding, J.
Deposited on : 2020-09-03
Resolution : 2.40 Å(reported)

This is a Full wwPDB X-ray Structure Validation Report for a publicly released PDB entry.

We welcome your comments at validation@mail.wwpdb.org

A user guide is available at

<https://www.wwpdb.org/validation/2017/XrayValidationReportHelp>

with specific help available everywhere you see the ⓘ symbol.

The types of validation reports are described at

<http://www.wwpdb.org/validation/2017/FAQs#types>.

The following versions of software and data (see [references ⓘ](#)) were used in the production of this report:

MolProbity : 4.02b-467
Mogul : 1.8.5 (274361), CSD as541be (2020)
Xtriage (Phenix) : 1.13
EDS : 2.36
buster-report : 1.1.7 (2018)
Percentile statistics : 20191225.v01 (using entries in the PDB archive December 25th 2019)
Refmac : 5.8.0158
CCP4 : 7.0.044 (Gargrove)
Ideal geometry (proteins) : Engh & Huber (2001)
Ideal geometry (DNA, RNA) : Parkinson et al. (1996)
Validation Pipeline (wwPDB-VP) : 2.36

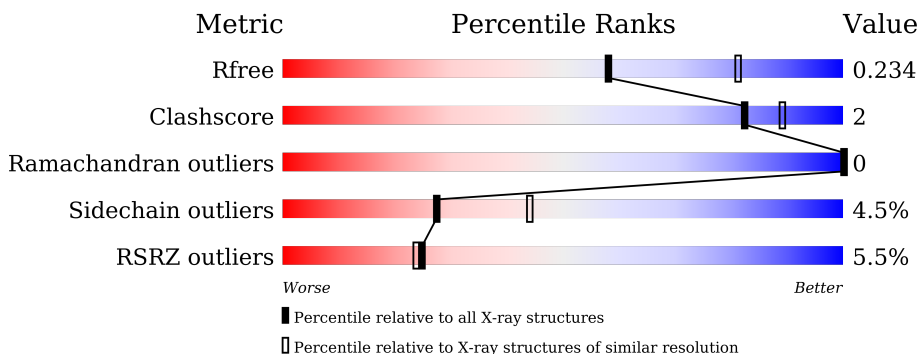
1 Overall quality at a glance

The following experimental techniques were used to determine the structure:

X-RAY DIFFRACTION

The reported resolution of this entry is 2.40 Å.

Percentile scores (ranging between 0-100) for global validation metrics of the entry are shown in the following graphic. The table shows the number of entries on which the scores are based.



Metric	Whole archive (#Entries)	Similar resolution (#Entries, resolution range(Å))
R_{free}	130704	3907 (2.40-2.40)
Clashscore	141614	4398 (2.40-2.40)
Ramachandran outliers	138981	4318 (2.40-2.40)
Sidechain outliers	138945	4319 (2.40-2.40)
RSRZ outliers	127900	3811 (2.40-2.40)

The table below summarises the geometric issues observed across the polymeric chains and their fit to the electron density. The red, orange, yellow and green segments of the lower bar indicate the fraction of residues that contain outliers for ≥ 3 , 2, 1 and 0 types of geometric quality criteria respectively. A grey segment represents the fraction of residues that are not modelled. The numeric value for each fraction is indicated below the corresponding segment, with a dot representing fractions $\leq 5\%$. The upper red bar (where present) indicates the fraction of residues that have poor fit to the electron density. The numeric value is given above the bar.

Mol	Chain	Length	Quality of chain
1	A	917	
2	C	14	
2	D	14	

2 Entry composition

There are 7 unique types of molecules in this entry. The entry contains 6940 atoms, of which 0 are hydrogens and 0 are deuteriums.

In the tables below, the ZeroOcc column contains the number of atoms modelled with zero occupancy, the AltConf column contains the number of residues with at least one atom in alternate conformation and the Trace column contains the number of residues modelled with at most 2 atoms.

- Molecule 1 is a protein called Maltodextrin-binding protein,5-methylcytosine-modifying enzyme 1.

Mol	Chain	Residues	Atoms					ZeroOcc	AltConf	Trace
			Total	C	N	O	S			
1	A	858	6366	4038	1098	1204	26	0	0	0

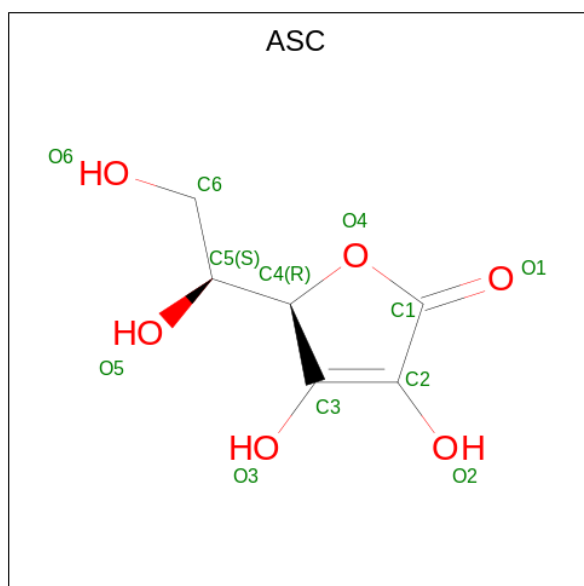
There are 26 discrepancies between the modelled and reference sequences:

Chain	Residue	Modelled	Actual	Comment	Reference
A	-373	MET	-	initiating methionine	UNP A0A376KDN7
A	-291	ALA	ASP	engineered mutation	UNP A0A376KDN7
A	-290	ALA	LYS	engineered mutation	UNP A0A376KDN7
A	-201	ALA	GLU	engineered mutation	UNP A0A376KDN7
A	-200	ALA	ASN	engineered mutation	UNP A0A376KDN7
A	-134	ALA	LYS	engineered mutation	UNP A0A376KDN7
A	-11	ALA	LYS	engineered mutation	UNP A0A376KDN7
A	-10	ALA	ASP	engineered mutation	UNP A0A376KDN7
A	-6	ASN	-	linker	UNP A0A376KDN7
A	-5	ALA	-	linker	UNP A0A376KDN7
A	-4	ALA	-	linker	UNP A0A376KDN7
A	-3	ARG	-	linker	UNP A0A376KDN7
A	-2	ALA	-	linker	UNP A0A376KDN7
A	-1	ALA	-	linker	UNP A0A376KDN7
A	0	ALA	-	linker	UNP A0A376KDN7
A	533	ALA	-	expression tag	UNP A0A2K3D5Z7
A	534	ALA	-	expression tag	UNP A0A2K3D5Z7
A	535	ALA	-	expression tag	UNP A0A2K3D5Z7
A	536	LEU	-	expression tag	UNP A0A2K3D5Z7
A	537	GLU	-	expression tag	UNP A0A2K3D5Z7
A	538	HIS	-	expression tag	UNP A0A2K3D5Z7
A	539	HIS	-	expression tag	UNP A0A2K3D5Z7
A	540	HIS	-	expression tag	UNP A0A2K3D5Z7
A	541	HIS	-	expression tag	UNP A0A2K3D5Z7
A	542	HIS	-	expression tag	UNP A0A2K3D5Z7
A	543	HIS	-	expression tag	UNP A0A2K3D5Z7

- Molecule 2 is a DNA chain called DNA (5'-D(P*(5CM)P*GP*CP*GP*CP*GP*GP*GP*A)-3').

Mol	Chain	Residues	Atoms					ZeroOcc	AltConf	Trace
			Total	C	N	O	P			
2	C	9	Total 189	C 88	N 39	O 53	P 9	0	0	0
2	D	8	Total 162	C 76	N 30	O 48	P 8	0	0	0

- Molecule 3 is ASCORBIC ACID (three-letter code: ASC) (formula: C₆H₈O₆) (labeled as "Ligand of Interest" by depositor).



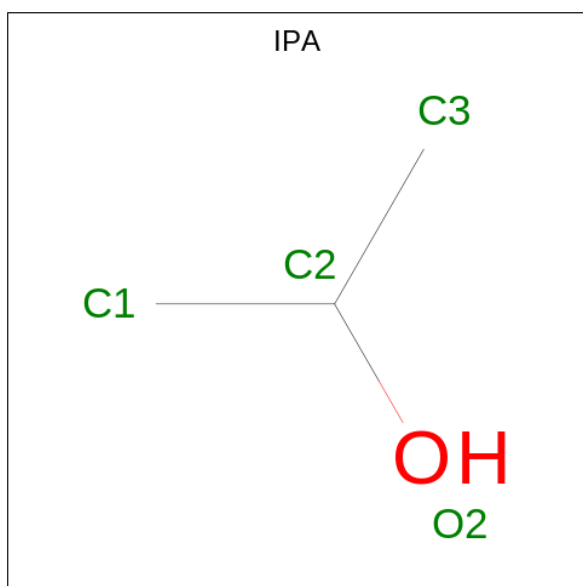
Mol	Chain	Residues	Atoms			ZeroOcc	AltConf
			Total	C	O		
3	A	1	Total 12	C 6	O 6	0	0

- Molecule 4 is 1,2-ETHANEDIOL (three-letter code: EDO) (formula: C₂H₆O₂).



Mol	Chain	Residues	Atoms			ZeroOcc	AltConf
4	A	1	Total	C	O	0	0
			4	2	2		
4	A	1	Total	C	O	0	0
			4	2	2		

- Molecule 5 is ISOPROPYL ALCOHOL (three-letter code: IPA) (formula: C₃H₈O) (labeled as "Ligand of Interest" by depositor).



Mol	Chain	Residues	Atoms			ZeroOcc	AltConf
5	A	1	Total	C	O	0	0
			4	3	1		

- Molecule 6 is FE (II) ION (three-letter code: FE2) (formula: Fe).

Mol	Chain	Residues	Atoms	ZeroOcc	AltConf
6	A	1	Total Fe 1 1	0	0

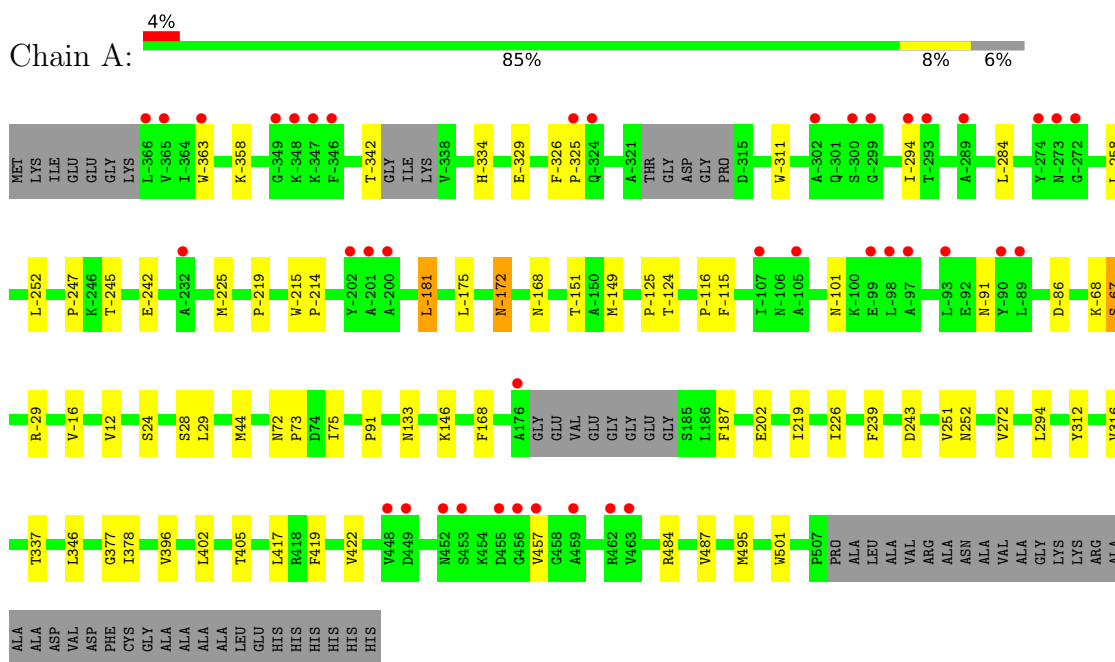
- Molecule 7 is water.

Mol	Chain	Residues	Atoms	ZeroOcc	AltConf
7	A	195	Total O 195 195	0	0
7	C	2	Total O 2 2	0	0
7	D	1	Total O 1 1	0	0

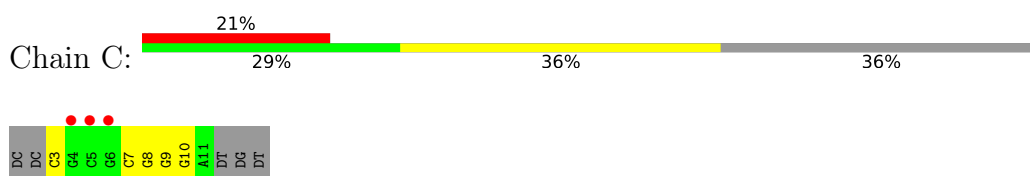
3 Residue-property plots [i](#)

These plots are drawn for all protein, RNA, DNA and oligosaccharide chains in the entry. The first graphic for a chain summarises the proportions of the various outlier classes displayed in the second graphic. The second graphic shows the sequence view annotated by issues in geometry and electron density. Residues are color-coded according to the number of geometric quality criteria for which they contain at least one outlier: green = 0, yellow = 1, orange = 2 and red = 3 or more. A red dot above a residue indicates a poor fit to the electron density ($RSRZ > 2$). Stretches of 2 or more consecutive residues without any outlier are shown as a green connector. Residues present in the sample, but not in the model, are shown in grey.

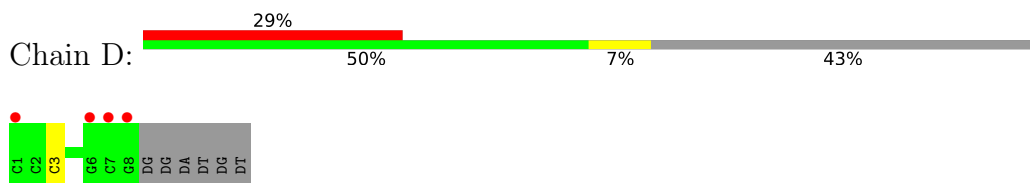
- Molecule 1: Maltodextrin-binding protein,5-methylcytosine-modifying enzyme 1



- Molecule 2: DNA (5'-D(P*(5CM)P*GP*CP*GP*CP*GP*GP*GP*A)-3')



- Molecule 2: DNA (5'-D(P*(5CM)P*GP*CP*GP*CP*GP*GP*GP*A)-3')



4 Data and refinement statistics

Property	Value	Source
Space group	C 1 2 1	Depositor
Cell constants a, b, c, α , β , γ	154.49Å 125.65Å 64.06Å 90.00° 102.96° 90.00°	Depositor
Resolution (Å)	49.28 – 2.40 49.28 – 2.40	Depositor EDS
% Data completeness (in resolution range)	75.4 (49.28-2.40) 75.3 (49.28-2.40)	Depositor EDS
R_{merge}	0.09	Depositor
R_{sym}	(Not available)	Depositor
$\langle I/\sigma(I) \rangle$ ¹	1.61 (at 2.39Å)	Xtrriage
Refinement program	REFMAC 5.8.0155	Depositor
R, R_{free}	0.190 , 0.235 0.190 , 0.234	Depositor DCC
R_{free} test set	1758 reflections (5.00%)	wwPDB-VP
Wilson B-factor (Å ²)	42.0	Xtrriage
Anisotropy	0.093	Xtrriage
Bulk solvent k_{sol} (e/Å ³), B_{sol} (Å ²)	0.31 , 40.5	EDS
L-test for twinning ²	$\langle L \rangle = 0.49$, $\langle L^2 \rangle = 0.32$	Xtrriage
Estimated twinning fraction	No twinning to report.	Xtrriage
F_o, F_c correlation	0.94	EDS
Total number of atoms	6940	wwPDB-VP
Average B, all atoms (Å ²)	52.0	wwPDB-VP

Xtrriage's analysis on translational NCS is as follows: *The largest off-origin peak in the Patterson function is 4.17% of the height of the origin peak. No significant pseudotranslation is detected.*

¹Intensities estimated from amplitudes.

²Theoretical values of $\langle |L| \rangle$, $\langle L^2 \rangle$ for acentric reflections are 0.5, 0.333 respectively for untwinned datasets, and 0.375, 0.2 for perfectly twinned datasets.

5 Model quality [i](#)

5.1 Standard geometry [i](#)

Bond lengths and bond angles in the following residue types are not validated in this section: ASC, FE2, IPA, EDO, 5CM

The Z score for a bond length (or angle) is the number of standard deviations the observed value is removed from the expected value. A bond length (or angle) with $|Z| > 5$ is considered an outlier worth inspection. RMSZ is the root-mean-square of all Z scores of the bond lengths (or angles).

Mol	Chain	Bond lengths		Bond angles	
		RMSZ	# Z >5	RMSZ	# Z >5
1	A	0.43	0/6509	0.63	0/8876
2	C	0.37	0/190	0.79	0/292
2	D	0.33	0/157	0.91	0/237
All	All	0.43	0/6856	0.65	0/9405

There are no bond length outliers.

There are no bond angle outliers.

There are no chirality outliers.

There are no planarity outliers.

5.2 Too-close contacts [i](#)

In the following table, the Non-H and H(model) columns list the number of non-hydrogen atoms and hydrogen atoms in the chain respectively. The H(added) column lists the number of hydrogen atoms added and optimized by MolProbity. The Clashes column lists the number of clashes within the asymmetric unit, whereas Symm-Clashes lists symmetry-related clashes.

Mol	Chain	Non-H	H(model)	H(added)	Clashes	Symm-Clashes
1	A	6366	0	6119	30	0
2	C	189	0	102	2	0
2	D	162	0	91	0	0
3	A	12	0	7	1	0
4	A	8	0	12	0	0
5	A	4	0	8	0	0
6	A	1	0	0	0	0
7	A	195	0	0	1	0
7	C	2	0	0	0	0
7	D	1	0	0	0	0
All	All	6940	0	6339	32	0

The all-atom clashscore is defined as the number of clashes found per 1000 atoms (including hydrogen atoms). The all-atom clashscore for this structure is 2.

All (32) close contacts within the same asymmetric unit are listed below, sorted by their clash magnitude.

Atom-1	Atom-2	Interatomic distance (Å)	Clash overlap (Å)
1:A:346:LEU:HD11	1:A:396:VAL:HG22	1.71	0.71
1:A:346:LEU:CD1	1:A:396:VAL:HG22	2.21	0.70
1:A:-247:PRO:HD2	1:A:-149:MET:HE3	1.78	0.64
1:A:12:VAL:HG21	1:A:487:VAL:HG21	1.81	0.62
1:A:187:PHE:HB3	1:A:501:TRP:CZ2	2.35	0.62
1:A:-245:THR:HG22	1:A:-124:THR:OG1	2.07	0.55
1:A:-181:LEU:HD12	1:A:-16:VAL:HG13	1.91	0.53
2:C:9:DG:H2''	2:C:10:DG:C8	2.44	0.53
1:A:91:PRO:HG3	1:A:377:GLY:HA3	1.95	0.48
1:A:-258:LEU:HD21	1:A:-149:MET:CE	2.44	0.48
1:A:168:PHE:CZ	1:A:378:ILE:HD13	2.50	0.47
1:A:-214:PRO:HG3	1:A:-116:PRO:HA	1.96	0.47
2:C:7:DC:H2''	2:C:8:DG:C8	2.49	0.47
1:A:44:MET:HB2	7:A:737:HOH:O	2.15	0.46
1:A:-219:PRO:HG3	1:A:-29:ARG:HA	1.97	0.45
1:A:316:VAL:HA	1:A:487:VAL:HG13	1.99	0.45
1:A:419:PHE:HA	1:A:422:VAL:HG12	1.99	0.45
1:A:-225:MET:HB2	1:A:-151:THR:HG21	2.00	0.44
1:A:72:ASN:HB2	1:A:73:PRO:CD	2.48	0.44
1:A:133:ASN:OD1	1:A:396:VAL:HG23	2.17	0.43
1:A:-215:TRP:CD1	1:A:-115:PHE:CE2	3.06	0.43
1:A:-284:LEU:O	1:A:-68:LYS:HE3	2.18	0.43
1:A:75:ILE:HD11	1:A:219:ILE:CG2	2.48	0.43
1:A:-172:ASN:OD1	1:A:-172:ASN:N	2.51	0.42
1:A:239:PHE:HB3	1:A:252:ASN:HB3	2.02	0.42
1:A:-329:GLU:HB3	1:A:-311:TRP:CE2	2.55	0.42
1:A:-245:THR:OG1	1:A:-242:GLU:HG3	2.21	0.41
1:A:226:ILE:HG23	1:A:294:LEU:CD1	2.50	0.41
1:A:-258:LEU:HD22	1:A:-125:PRO:HD3	2.03	0.40
1:A:-86:ASP:OD1	1:A:-67:SER:HB2	2.21	0.40
1:A:-326:PHE:HB3	1:A:-325:PRO:HD3	2.03	0.40
1:A:337:THR:HG23	3:A:601:ASC:H62	2.03	0.40

There are no symmetry-related clashes.

5.3 Torsion angles [i](#)

5.3.1 Protein backbone [i](#)

In the following table, the Percentiles column shows the percent Ramachandran outliers of the chain as a percentile score with respect to all X-ray entries followed by that with respect to entries of similar resolution.

The Analysed column shows the number of residues for which the backbone conformation was analysed, and the total number of residues.

Mol	Chain	Analysed	Favoured	Allowed	Outliers	Percentiles
1	A	850/917 (93%)	828 (97%)	22 (3%)	0	100 100

There are no Ramachandran outliers to report.

5.3.2 Protein sidechains [i](#)

In the following table, the Percentiles column shows the percent sidechain outliers of the chain as a percentile score with respect to all X-ray entries followed by that with respect to entries of similar resolution.

The Analysed column shows the number of residues for which the sidechain conformation was analysed, and the total number of residues.

Mol	Chain	Analysed	Rotameric	Outliers	Percentiles
1	A	626/711 (88%)	598 (96%)	28 (4%)	27 44

All (28) residues with a non-rotameric sidechain are listed below:

Mol	Chain	Res	Type
1	A	-363	TRP
1	A	-358	LYS
1	A	-342	THR
1	A	-334	HIS
1	A	-294	ILE
1	A	-252	LEU
1	A	-181	LEU
1	A	-175	LEU
1	A	-172	ASN
1	A	-168	ASN
1	A	-101	ASN
1	A	-91	ASN
1	A	-67	SER

Continued on next page...

Continued from previous page...

Mol	Chain	Res	Type
1	A	24	SER
1	A	28	SER
1	A	29	LEU
1	A	146	LYS
1	A	202	GLU
1	A	243	ASP
1	A	251	VAL
1	A	272	VAL
1	A	312	TYR
1	A	402	LEU
1	A	405	THR
1	A	417	LEU
1	A	457	VAL
1	A	484	ARG
1	A	495	MET

Sometimes sidechains can be flipped to improve hydrogen bonding and reduce clashes. All (1) such sidechains are listed below:

Mol	Chain	Res	Type
1	A	-170	HIS

5.3.3 RNA [i](#)

There are no RNA molecules in this entry.

5.4 Non-standard residues in protein, DNA, RNA chains [i](#)

2 non-standard protein/DNA/RNA residues are modelled in this entry.

In the following table, the Counts columns list the number of bonds (or angles) for which Mogul statistics could be retrieved, the number of bonds (or angles) that are observed in the model and the number of bonds (or angles) that are defined in the Chemical Component Dictionary. The Link column lists molecule types, if any, to which the group is linked. The Z score for a bond length (or angle) is the number of standard deviations the observed value is removed from the expected value. A bond length (or angle) with $|Z| > 2$ is considered an outlier worth inspection. RMSZ is the root-mean-square of all Z scores of the bond lengths (or angles).

Mol	Type	Chain	Res	Link	Bond lengths			Bond angles		
					Counts	RMSZ	$\# Z > 2$	Counts	RMSZ	$\# Z > 2$
2	5CM	D	3	2	17,21,22	4.91	12 (70%)	24,30,33	1.36	3 (12%)
2	5CM	C	3	2	17,21,22	4.97	12 (70%)	24,30,33	1.45	5 (20%)

In the following table, the Chirals column lists the number of chiral outliers, the number of chiral centers analysed, the number of these observed in the model and the number defined in the Chemical Component Dictionary. Similar counts are reported in the Torsion and Rings columns. '-' means no outliers of that kind were identified.

Mol	Type	Chain	Res	Link	Chirals	Torsions	Rings
2	5CM	D	3	2	-	4/7/21/22	0/2/2/2
2	5CM	C	3	2	-	6/7/21/22	0/2/2/2

All (24) bond length outliers are listed below:

Mol	Chain	Res	Type	Atoms	Z	Observed(Å)	Ideal(Å)
2	C	3	5CM	C6-C5	9.53	1.50	1.34
2	D	3	5CM	C6-C5	8.90	1.49	1.34
2	C	3	5CM	O4'-C1'	8.14	1.60	1.42
2	D	3	5CM	O4'-C1'	8.00	1.60	1.42
2	C	3	5CM	C2'-C1'	-6.68	1.33	1.52
2	D	3	5CM	C2'-C1'	-6.67	1.33	1.52
2	D	3	5CM	C4-N3	6.56	1.45	1.34
2	D	3	5CM	C2-N3	6.41	1.49	1.36
2	C	3	5CM	C2-N3	6.40	1.49	1.36
2	C	3	5CM	C4-N3	6.24	1.44	1.34
2	C	3	5CM	C3'-C4'	-5.48	1.37	1.53
2	D	3	5CM	C3'-C4'	-5.43	1.38	1.53
2	C	3	5CM	C6-N1	5.31	1.47	1.38
2	D	3	5CM	C6-N1	5.13	1.46	1.38
2	D	3	5CM	C2-N1	4.75	1.50	1.40
2	D	3	5CM	C4-N4	4.47	1.45	1.34
2	C	3	5CM	C4-N4	4.46	1.45	1.34
2	C	3	5CM	C2-N1	4.43	1.49	1.40
2	D	3	5CM	C2'-C3'	4.00	1.63	1.52
2	C	3	5CM	C2'-C3'	3.89	1.63	1.52
2	C	3	5CM	O4'-C4'	3.80	1.53	1.45
2	D	3	5CM	O4'-C4'	3.43	1.52	1.45
2	D	3	5CM	O2-C2	-2.75	1.18	1.23
2	C	3	5CM	O2-C2	-2.59	1.18	1.23

All (8) bond angle outliers are listed below:

Mol	Chain	Res	Type	Atoms	Z	Observed(°)	Ideal(°)
2	D	3	5CM	C3'-C2'-C1'	2.81	109.58	102.54
2	C	3	5CM	C5-C4-N3	-2.80	118.66	121.67
2	C	3	5CM	C1'-N1-C6	2.67	125.38	120.77
2	C	3	5CM	C6-N1-C2	-2.55	117.35	120.87

Continued on next page...

Continued from previous page...

Mol	Chain	Res	Type	Atoms	Z	Observed(°)	Ideal(°)
2	D	3	5CM	C5-C6-N1	-2.49	120.78	123.34
2	D	3	5CM	C2'-C1'-N1	2.42	119.34	113.77
2	C	3	5CM	O2-C2-N3	-2.41	118.41	122.33
2	C	3	5CM	C5A-C5-C6	-2.36	119.70	122.85

There are no chirality outliers.

All (10) torsion outliers are listed below:

Mol	Chain	Res	Type	Atoms
2	C	3	5CM	O4'-C4'-C5'-O5'
2	C	3	5CM	C3'-C4'-C5'-O5'
2	D	3	5CM	O4'-C1'-N1-C6
2	D	3	5CM	O4'-C1'-N1-C2
2	D	3	5CM	C2'-C1'-N1-C2
2	D	3	5CM	C2'-C1'-N1-C6
2	C	3	5CM	C2'-C1'-N1-C6
2	C	3	5CM	O4'-C1'-N1-C6
2	C	3	5CM	O4'-C1'-N1-C2
2	C	3	5CM	C2'-C1'-N1-C2

There are no ring outliers.

No monomer is involved in short contacts.

5.5 Carbohydrates [i](#)

There are no monosaccharides in this entry.

5.6 Ligand geometry [i](#)

Of 5 ligands modelled in this entry, 1 is monoatomic - leaving 4 for Mogul analysis.

In the following table, the Counts columns list the number of bonds (or angles) for which Mogul statistics could be retrieved, the number of bonds (or angles) that are observed in the model and the number of bonds (or angles) that are defined in the Chemical Component Dictionary. The Link column lists molecule types, if any, to which the group is linked. The Z score for a bond length (or angle) is the number of standard deviations the observed value is removed from the expected value. A bond length (or angle) with $|Z| > 2$ is considered an outlier worth inspection. RMSZ is the root-mean-square of all Z scores of the bond lengths (or angles).

Mol	Type	Chain	Res	Link	Bond lengths			Bond angles		
					Counts	RMSZ	# Z > 2	Counts	RMSZ	# Z > 2
3	ASC	A	601	6	12,12,12	3.03	5 (41%)	17,17,17	2.37	6 (35%)
4	EDO	A	602	-	3,3,3	0.54	0	2,2,2	0.27	0
4	EDO	A	603	-	3,3,3	0.49	0	2,2,2	0.27	0
5	IPA	A	604	-	3,3,3	0.70	0	3,3,3	0.14	0

In the following table, the Chirals column lists the number of chiral outliers, the number of chiral centers analysed, the number of these observed in the model and the number defined in the Chemical Component Dictionary. Similar counts are reported in the Torsion and Rings columns. '-' means no outliers of that kind were identified.

Mol	Type	Chain	Res	Link	Chirals	Torsions	Rings
3	ASC	A	601	6	-	4/6/22/22	0/1/1/1
4	EDO	A	602	-	-	0/1/1/1	-
4	EDO	A	603	-	-	0/1/1/1	-

All (5) bond length outliers are listed below:

Mol	Chain	Res	Type	Atoms	Z	Observed(Å)	Ideal(Å)
3	A	601	ASC	O4-C1	8.71	1.49	1.36
3	A	601	ASC	O4-C4	2.71	1.50	1.45
3	A	601	ASC	C5-C4	-2.53	1.48	1.53
3	A	601	ASC	O3-C3	2.41	1.40	1.33
3	A	601	ASC	C4-C3	-2.25	1.46	1.50

All (6) bond angle outliers are listed below:

Mol	Chain	Res	Type	Atoms	Z	Observed(°)	Ideal(°)
3	A	601	ASC	O4-C1-O1	5.61	127.87	121.25
3	A	601	ASC	O3-C3-C2	-4.36	120.83	132.29
3	A	601	ASC	O4-C1-C2	-3.97	106.33	109.86
3	A	601	ASC	O2-C2-C3	-2.89	119.83	128.44
3	A	601	ASC	O1-C1-C2	-2.28	125.79	129.37
3	A	601	ASC	C5-C4-C3	-2.18	110.64	114.78

There are no chirality outliers.

All (4) torsion outliers are listed below:

Mol	Chain	Res	Type	Atoms
3	A	601	ASC	O5-C5-C6-O6
3	A	601	ASC	C4-C5-C6-O6
3	A	601	ASC	O4-C4-C5-C6

Continued on next page...

Continued from previous page...

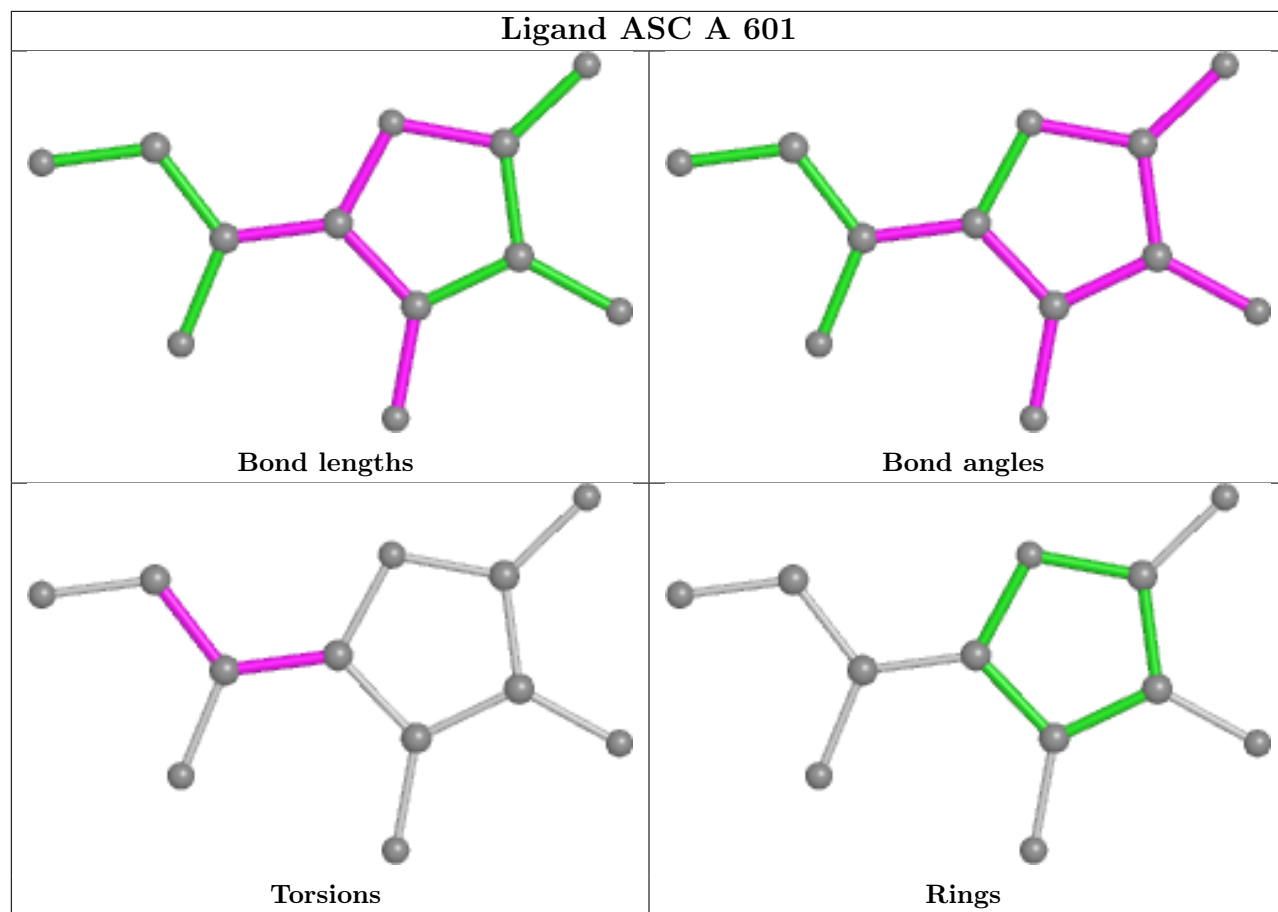
Mol	Chain	Res	Type	Atoms
3	A	601	ASC	C3-C4-C5-C6

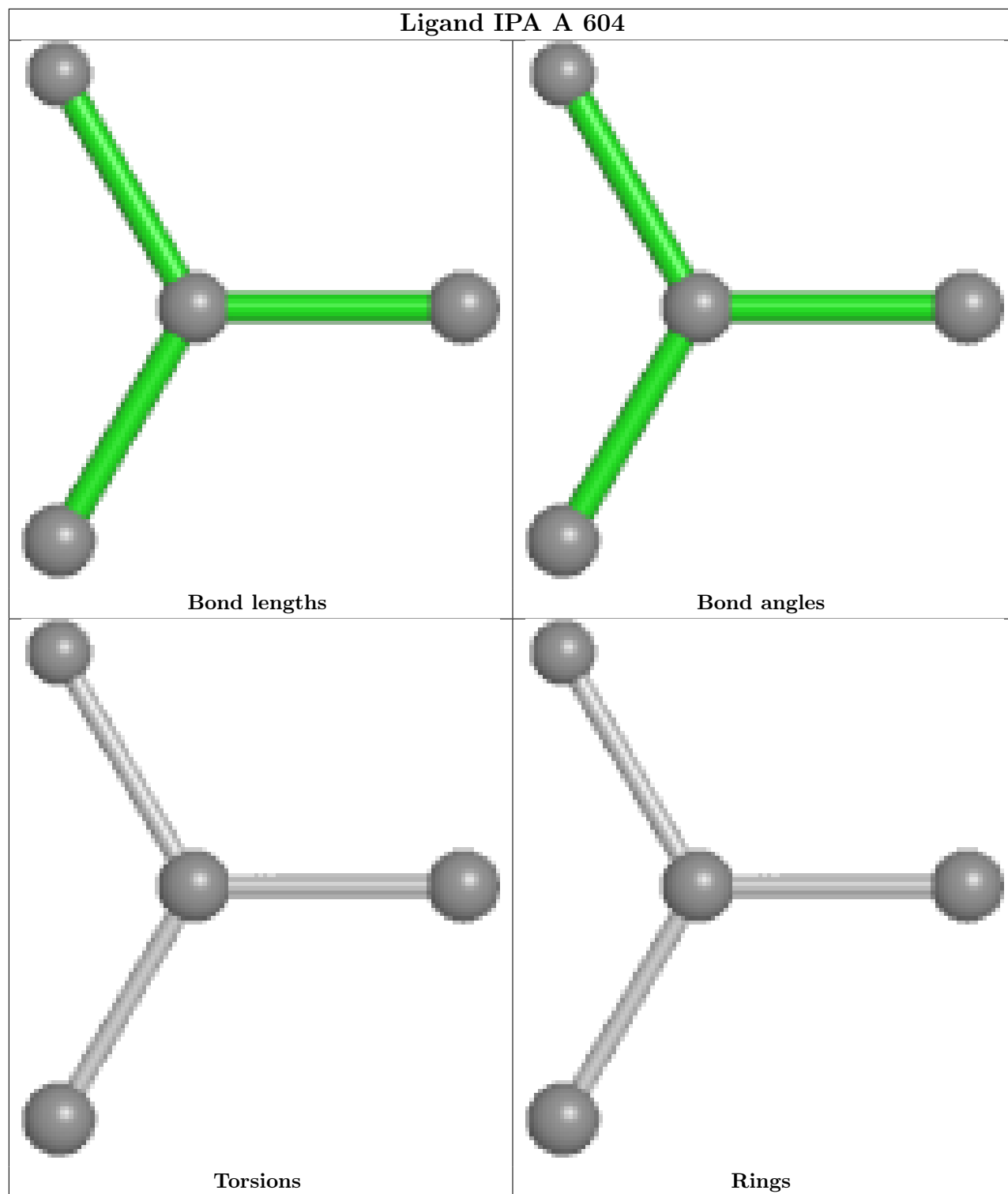
There are no ring outliers.

1 monomer is involved in 1 short contact:

Mol	Chain	Res	Type	Clashes	Symm-Clashes
3	A	601	ASC	1	0

The following is a two-dimensional graphical depiction of Mogul quality analysis of bond lengths, bond angles, torsion angles, and ring geometry for all instances of the Ligand of Interest. In addition, ligands with molecular weight > 250 and outliers as shown on the validation Tables will also be included. For torsion angles, if less than 5% of the Mogul distribution of torsion angles is within 10 degrees of the torsion angle in question, then that torsion angle is considered an outlier. Any bond that is central to one or more torsion angles identified as an outlier by Mogul will be highlighted in the graph. For rings, the root-mean-square deviation (RMSD) between the ring in question and similar rings identified by Mogul is calculated over all ring torsion angles. If the average RMSD is greater than 60 degrees and the minimal RMSD between the ring in question and any Mogul-identified rings is also greater than 60 degrees, then that ring is considered an outlier. The outliers are highlighted in purple. The color gray indicates Mogul did not find sufficient equivalents in the CSD to analyse the geometry.





5.7 Other polymers [i](#)

There are no such residues in this entry.

5.8 Polymer linkage issues

There are no chain breaks in this entry.

6 Fit of model and data

6.1 Protein, DNA and RNA chains

In the following table, the column labelled '#RSRZ > 2' contains the number (and percentage) of RSRZ outliers, followed by percent RSRZ outliers for the chain as percentile scores relative to all X-ray entries and entries of similar resolution. The OWAB column contains the minimum, median, 95th percentile and maximum values of the occupancy-weighted average B-factor per residue. The column labelled 'Q < 0.9' lists the number of (and percentage) of residues with an average occupancy less than 0.9.

Mol	Chain	Analysed	<RSRZ>	#RSRZ>2	OWAB(Å ²)	Q<0.9
1	A	858/917 (93%)	0.13	41 (4%) 30 29	17, 45, 99, 127	0
2	C	8/14 (57%)	1.63	3 (37%) 0 0	84, 90, 123, 127	0
2	D	7/14 (50%)	2.42	4 (57%) 0 0	64, 90, 138, 139	0
All	All	873/945 (92%)	0.16	48 (5%) 25 24	17, 46, 101, 139	0

All (48) RSRZ outliers are listed below:

Mol	Chain	Res	Type	RSRZ
1	A	-325	PRO	5.0
1	A	-200	ALA	4.7
1	A	-274	TYR	4.4
1	A	-300	SER	4.3
1	A	-201	ALA	4.2
1	A	-302	ALA	4.1
2	D	7	DC	4.0
1	A	-105	ALA	3.9
1	A	-289	ALA	3.8
1	A	-90	TYR	3.7
2	D	1	DC	3.7
1	A	-349	GLY	3.7
2	D	8	DG	3.6
1	A	-202	TYR	3.4
2	C	6	DG	3.3
1	A	456	GLY	3.2
1	A	-89	LEU	3.1
1	A	-363	TRP	3.0
1	A	-97	ALA	3.0
2	C	5	DC	3.0
1	A	457	VAL	2.9
1	A	-293	THR	2.9
1	A	-272	GLY	2.7

Continued on next page...

Continued from previous page...

Mol	Chain	Res	Type	RSRZ
1	A	-99	GLU	2.6
2	D	6	DG	2.6
1	A	-347	LYS	2.6
1	A	176	ALA	2.6
1	A	-346	PHE	2.6
2	C	4	DG	2.6
1	A	-348	LYS	2.5
1	A	449	ASP	2.5
1	A	-324	GLN	2.5
1	A	-294	ILE	2.4
1	A	453	SER	2.4
1	A	448	VAL	2.4
1	A	-273	ASN	2.3
1	A	463	VAL	2.3
1	A	-107	ILE	2.3
1	A	-232	ALA	2.3
1	A	-366	LEU	2.2
1	A	-93	LEU	2.2
1	A	455	ASP	2.2
1	A	459	ALA	2.2
1	A	-299	GLY	2.1
1	A	-98	LEU	2.1
1	A	452	ASN	2.1
1	A	462	ARG	2.1
1	A	-365	VAL	2.0

6.2 Non-standard residues in protein, DNA, RNA chains [i](#)

In the following table, the Atoms column lists the number of modelled atoms in the group and the number defined in the chemical component dictionary. The B-factors column lists the minimum, median, 95th percentile and maximum values of B factors of atoms in the group. The column labelled 'Q< 0.9' lists the number of atoms with occupancy less than 0.9.

Mol	Type	Chain	Res	Atoms	RSCC	RSR	B-factors(Å ²)	Q<0.9
2	5CM	C	3	20/21	0.77	0.34	114,135,159,161	0
2	5CM	D	3	20/21	0.95	0.17	50,57,78,79	0

6.3 Carbohydrates [i](#)

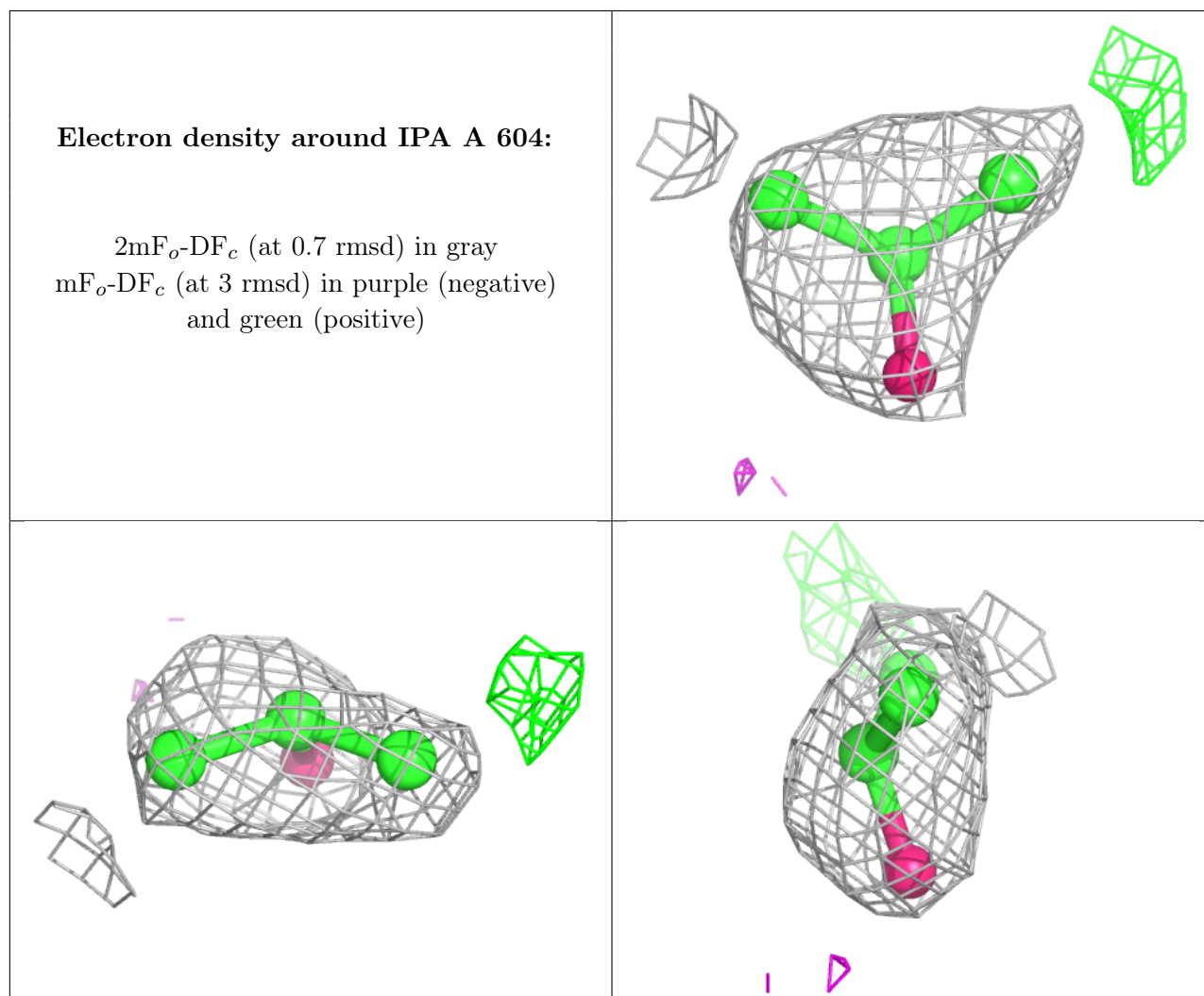
There are no monosaccharides in this entry.

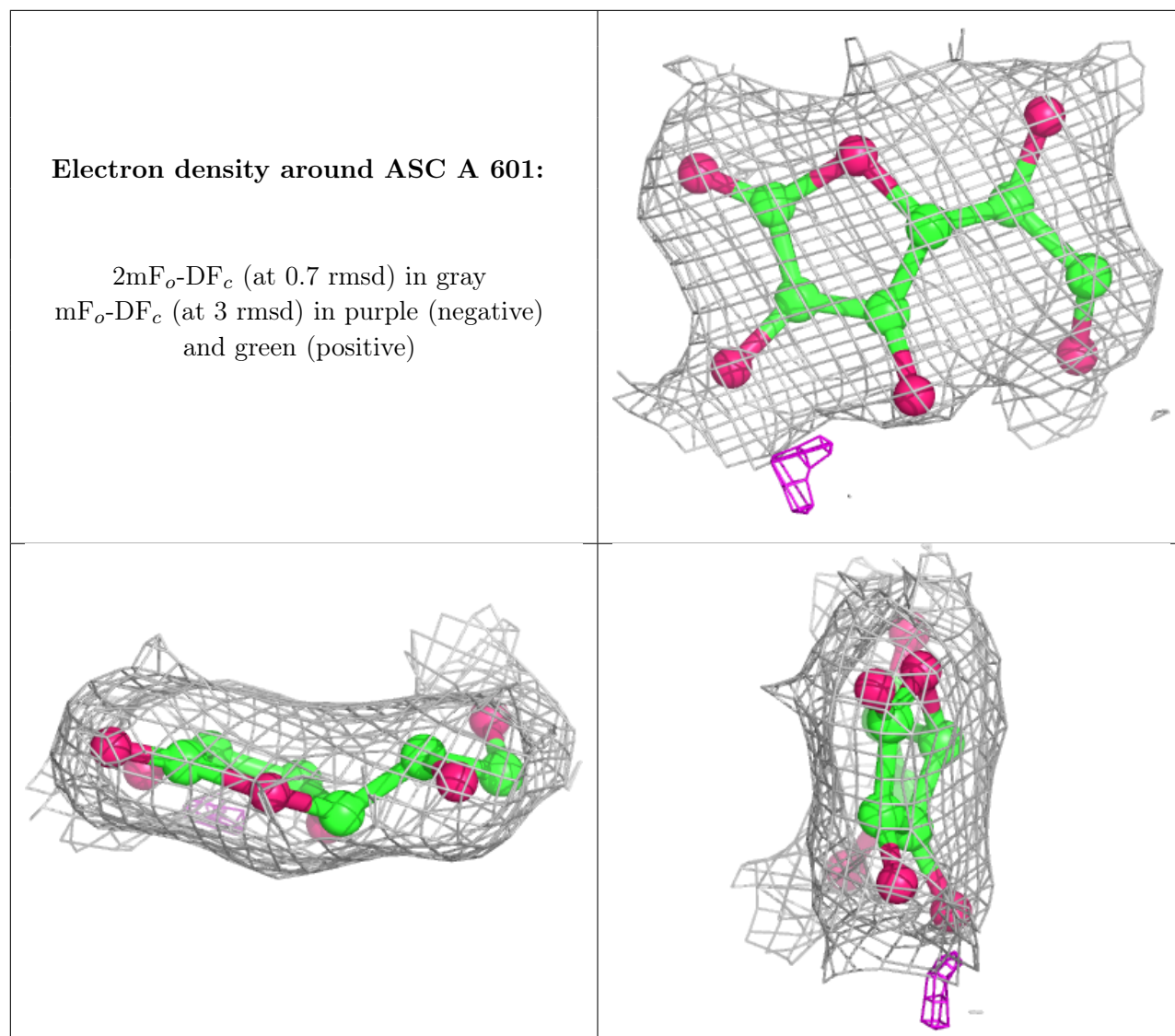
6.4 Ligands [i](#)

In the following table, the Atoms column lists the number of modelled atoms in the group and the number defined in the chemical component dictionary. The B-factors column lists the minimum, median, 95th percentile and maximum values of B factors of atoms in the group. The column labelled 'Q< 0.9' lists the number of atoms with occupancy less than 0.9.

Mol	Type	Chain	Res	Atoms	RSCC	RSR	B-factors(Å ²)	Q<0.9
5	IPA	A	604	4/4	0.85	0.28	55,61,61,65	0
4	EDO	A	602	4/4	0.92	0.30	56,57,61,64	0
6	FE2	A	605	1/1	0.92	0.08	91,91,91,91	1
4	EDO	A	603	4/4	0.94	0.23	54,57,58,58	0
3	ASC	A	601	12/12	0.97	0.15	41,49,57,58	0

The following is a graphical depiction of the model fit to experimental electron density of all instances of the Ligand of Interest. In addition, ligands with molecular weight > 250 and outliers as shown on the geometry validation Tables will also be included. Each fit is shown from different orientation to approximate a three-dimensional view.





6.5 Other polymers [i](#)

There are no such residues in this entry.