



Full wwPDB X-ray Structure Validation Report ⓘ

May 25, 2020 – 03:52 am BST

PDB ID : 6CZX
Title : Crystal structure of Arabidopsis thaliana phosphoserine aminotransferase isoform 1 (AtPSAT1) in complex with PLP internal aldimine
Authors : Sekula, B.; Ruzskowski, M.; Dauter, Z.
Deposited on : 2018-04-09
Resolution : 1.57 Å(reported)

This is a Full wwPDB X-ray Structure Validation Report for a publicly released PDB entry.

We welcome your comments at validation@mail.wwpdb.org

A user guide is available at

<https://www.wwpdb.org/validation/2017/XrayValidationReportHelp>

with specific help available everywhere you see the ⓘ symbol.

The following versions of software and data (see [references ⓘ](#)) were used in the production of this report:

MolProbity : 4.02b-467
Mogul : 1.8.5 (274361), CSD as541be (2020)
Xtriage (Phenix) : 1.13
EDS : 2.11
Percentile statistics : 20191225.v01 (using entries in the PDB archive December 25th 2019)
Refmac : 5.8.0158
CCP4 : 7.0.044 (Gargrove)
Ideal geometry (proteins) : Engh & Huber (2001)
Ideal geometry (DNA, RNA) : Parkinson et al. (1996)
Validation Pipeline (wwPDB-VP) : 2.11

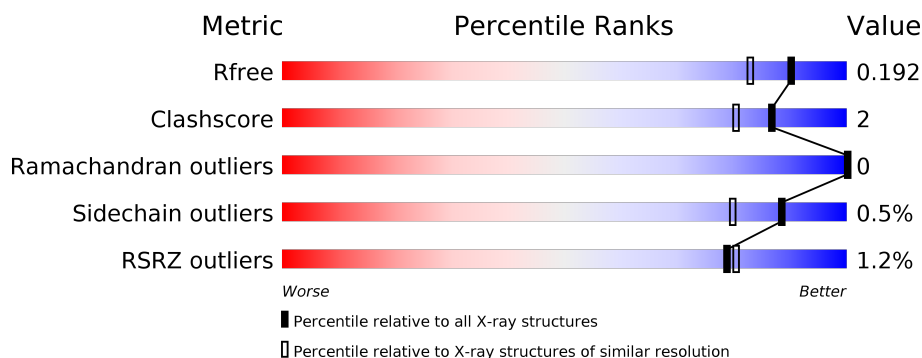
1 Overall quality at a glance

The following experimental techniques were used to determine the structure:

X-RAY DIFFRACTION

The reported resolution of this entry is 1.57 Å.

Percentile scores (ranging between 0-100) for global validation metrics of the entry are shown in the following graphic. The table shows the number of entries on which the scores are based.



Metric	Whole archive (#Entries)	Similar resolution (#Entries, resolution range(Å))
R_{free}	130704	5534 (1.60-1.56)
Clashscore	141614	5861 (1.60-1.56)
Ramachandran outliers	138981	5708 (1.60-1.56)
Sidechain outliers	138945	5703 (1.60-1.56)
RSRZ outliers	127900	5431 (1.60-1.56)

The table below summarises the geometric issues observed across the polymeric chains and their fit to the electron density. The red, orange, yellow and green segments on the lower bar indicate the fraction of residues that contain outliers for ≥ 3 , 2, 1 and 0 types of geometric quality criteria respectively. A grey segment represents the fraction of residues that are not modelled. The numeric value for each fraction is indicated below the corresponding segment, with a dot representing fractions $\leq 5\%$. The upper red bar (where present) indicates the fraction of residues that have poor fit to the electron density. The numeric value is given above the bar.

Mol	Chain	Length	Quality of chain
1	A	362	 2% 98%
1	B	362	 % 96%
1	C	362	 % 97%
1	D	362	 % 96%

The following table lists non-polymeric compounds, carbohydrate monomers and non-standard residues in protein, DNA, RNA chains that are outliers for geometric or electron-density-fit crite-

ria:

Mol	Type	Chain	Res	Chirality	Geometry	Clashes	Electron density
4	MRD	B	504	-	-	X	-
4	MRD	C	506	-	-	X	-

2 Entry composition [i](#)

There are 5 unique types of molecules in this entry. The entry contains 13524 atoms, of which 0 are hydrogens and 0 are deuteriums.

In the tables below, the ZeroOcc column contains the number of atoms modelled with zero occupancy, the AltConf column contains the number of residues with at least one atom in alternate conformation and the Trace column contains the number of residues modelled with at most 2 atoms.

- Molecule 1 is a protein called Phosphoserine aminotransferase 1, chloroplastic.

Mol	Chain	Residues	Atoms						ZeroOcc	AltConf	Trace
			Total	C	N	O	P	S			
1	A	362	2858	1822	472	545	1	18	0	4	0
1	B	361	2921	1863	487	552	1	18	0	14	0
1	C	361	2866	1827	473	547	1	18	0	6	0
1	D	361	2907	1857	477	552	1	20	0	14	0

There are 12 discrepancies between the modelled and reference sequences:

Chain	Residue	Modelled	Actual	Comment	Reference
A	69	SER	-	expression tag	UNP Q96255
A	70	ASN	-	expression tag	UNP Q96255
A	71	ALA	-	expression tag	UNP Q96255
B	69	SER	-	expression tag	UNP Q96255
B	70	ASN	-	expression tag	UNP Q96255
B	71	ALA	-	expression tag	UNP Q96255
C	69	SER	-	expression tag	UNP Q96255
C	70	ASN	-	expression tag	UNP Q96255
C	71	ALA	-	expression tag	UNP Q96255
D	69	SER	-	expression tag	UNP Q96255
D	70	ASN	-	expression tag	UNP Q96255
D	71	ALA	-	expression tag	UNP Q96255

- Molecule 2 is SULFATE ION (three-letter code: SO4) (formula: O₄S).



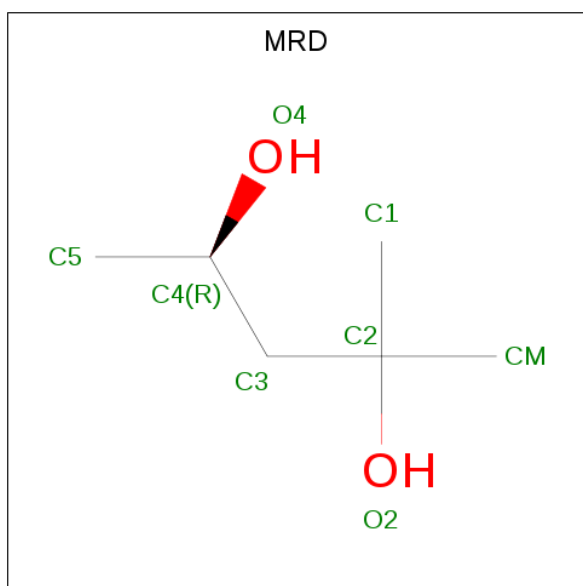
Mol	Chain	Residues	Atoms			ZeroOcc	AltConf
			Total	O	S		
2	A	1	5	4	1	0	0
2	A	1	5	4	1	0	0
2	A	1	5	4	1	0	0
2	A	1	5	4	1	0	0
2	A	1	5	4	1	0	0
2	B	1	5	4	1	0	0
2	B	1	5	4	1	0	0
2	C	1	5	4	1	0	0
2	C	1	5	4	1	0	0
2	C	1	5	4	1	0	0
2	C	1	5	4	1	0	0
2	D	1	5	4	1	0	0

- Molecule 3 is DI(HYDROXYETHYL)ETHER (three-letter code: PEG) (formula: C₄H₁₀O₃).



Mol	Chain	Residues	Atoms			ZeroOcc	AltConf
3	A	1	Total	C	O	0	0
			7	4	3		
3	B	1	Total	C	O	0	0
			7	4	3		
3	C	1	Total	C	O	0	0
			7	4	3		

- Molecule 4 is (4R)-2-METHYLPENTANE-2,4-DIOL (three-letter code: MRD) (formula: $C_6H_{14}O_2$).



Mol	Chain	Residues	Atoms			ZeroOcc	AltConf
4	B	1	Total	C	O	0	0
			8	6	2		
4	C	1	Total	C	O	0	0
			8	6	2		

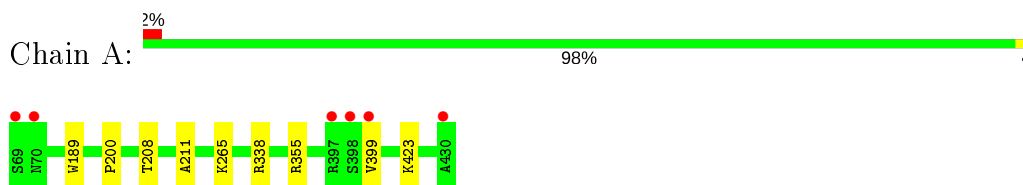
- Molecule 5 is water.

Mol	Chain	Residues	Atoms		ZeroOcc	AltConf
5	A	466	Total	O	0	0
			466	466		
5	B	456	Total	O	0	0
			456	456		
5	C	475	Total	O	0	0
			475	475		
5	D	478	Total	O	0	0
			478	478		

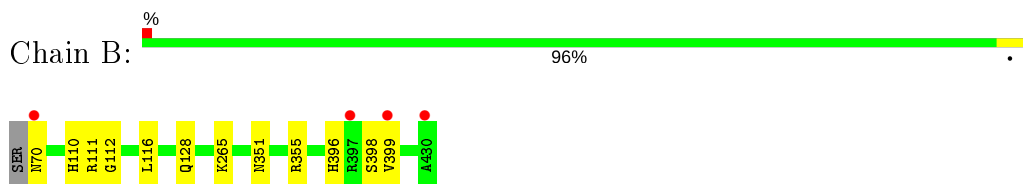
3 Residue-property plots [i](#)

These plots are drawn for all protein, RNA and DNA chains in the entry. The first graphic for a chain summarises the proportions of the various outlier classes displayed in the second graphic. The second graphic shows the sequence view annotated by issues in geometry and electron density. Residues are color-coded according to the number of geometric quality criteria for which they contain at least one outlier: green = 0, yellow = 1, orange = 2 and red = 3 or more. A red dot above a residue indicates a poor fit to the electron density ($RSRZ > 2$). Stretches of 2 or more consecutive residues without any outlier are shown as a green connector. Residues present in the sample, but not in the model, are shown in grey.

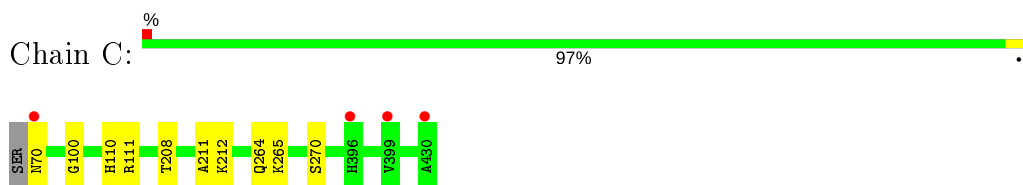
- Molecule 1: Phosphoserine aminotransferase 1, chloroplastic



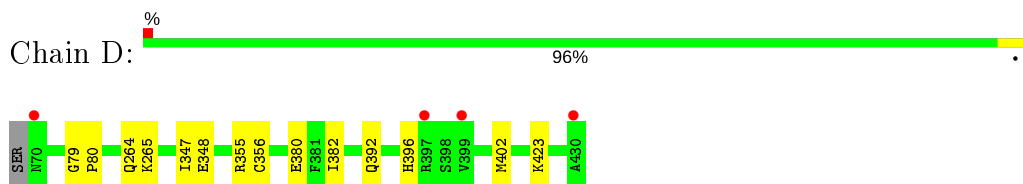
- Molecule 1: Phosphoserine aminotransferase 1, chloroplastic



- Molecule 1: Phosphoserine aminotransferase 1, chloroplastic



- Molecule 1: Phosphoserine aminotransferase 1, chloroplastic



4 Data and refinement statistics

Property	Value	Source
Space group	P 21 21 21	Depositor
Cell constants a, b, c, α , β , γ	84.22Å 105.93Å 186.89Å 90.00° 90.00° 90.00°	Depositor
Resolution (Å)	76.78 – 1.57 76.78 – 1.57	Depositor EDS
% Data completeness (in resolution range)	99.3 (76.78-1.57) 99.3 (76.78-1.57)	Depositor EDS
R_{merge}	0.09	Depositor
R_{sym}	(Not available)	Depositor
$\langle I/\sigma(I) \rangle$ ¹	1.66 (at 1.57Å)	Xtrriage
Refinement program	REFMAC 5.8.0218	Depositor
R, R_{free}	0.157 , 0.175 0.169 , 0.192	Depositor DCC
R_{free} test set	1155 reflections (0.50%)	wwPDB-VP
Wilson B-factor (Å ²)	19.2	Xtrriage
Anisotropy	0.184	Xtrriage
Bulk solvent k_{sol} (e/Å ³), B_{sol} (Å ²)	0.36 , 43.0	EDS
L-test for twinning ²	$\langle L \rangle = 0.47$, $\langle L^2 \rangle = 0.30$	Xtrriage
Estimated twinning fraction	No twinning to report.	Xtrriage
F_o, F_c correlation	0.97	EDS
Total number of atoms	13524	wwPDB-VP
Average B, all atoms (Å ²)	22.0	wwPDB-VP

Xtrriage's analysis on translational NCS is as follows: *The analyses of the Patterson function reveals a significant off-origin peak that is 30.93 % of the origin peak, indicating pseudo-translational symmetry. The chance of finding a peak of this or larger height randomly in a structure without pseudo-translational symmetry is equal to 1.2043e-03. The detected translational NCS is most likely also responsible for the elevated intensity ratio.*

¹Intensities estimated from amplitudes.

²Theoretical values of $\langle |L| \rangle$, $\langle L^2 \rangle$ for acentric reflections are 0.5, 0.333 respectively for untwinned datasets, and 0.375, 0.2 for perfectly twinned datasets.

5 Model quality [i](#)

5.1 Standard geometry [i](#)

Bond lengths and bond angles in the following residue types are not validated in this section: MRD, LLP, PEG, SO4

The Z score for a bond length (or angle) is the number of standard deviations the observed value is removed from the expected value. A bond length (or angle) with $|Z| > 5$ is considered an outlier worth inspection. RMSZ is the root-mean-square of all Z scores of the bond lengths (or angles).

Mol	Chain	Bond lengths		Bond angles	
		RMSZ	# Z >5	RMSZ	# Z >5
1	A	0.62	0/2903	0.73	0/3913
1	B	0.65	0/2979	0.78	0/4013
1	C	0.66	0/2914	0.74	0/3928
1	D	0.68	0/2979	0.76	0/4016
All	All	0.66	0/11775	0.75	0/15870

There are no bond length outliers.

There are no bond angle outliers.

There are no chirality outliers.

There are no planarity outliers.

5.2 Too-close contacts [i](#)

In the following table, the Non-H and H(model) columns list the number of non-hydrogen atoms and hydrogen atoms in the chain respectively. The H(added) column lists the number of hydrogen atoms added and optimized by MolProbity. The Clashes column lists the number of clashes within the asymmetric unit, whereas Symm-Clashes lists symmetry related clashes.

Mol	Chain	Non-H	H(model)	H(added)	Clashes	Symm-Clashes
1	A	2858	0	2850	6	0
1	B	2921	0	2928	13	0
1	C	2866	0	2856	12	0
1	D	2907	0	2919	10	0
2	A	25	0	0	0	0
2	B	10	0	0	0	0
2	C	20	0	0	0	0
2	D	5	0	0	0	0
3	A	7	0	10	0	0

Continued on next page...

Continued from previous page...

Mol	Chain	Non-H	H(model)	H(added)	Clashes	Symm-Clashes
3	B	7	0	10	0	0
3	C	7	0	10	0	0
4	B	8	0	14	9	0
4	C	8	0	14	10	0
5	A	466	0	0	4	0
5	B	456	0	0	1	0
5	C	475	0	0	3	0
5	D	478	0	0	8	0
All	All	13524	0	11611	48	0

The all-atom clashscore is defined as the number of clashes found per 1000 atoms (including hydrogen atoms). The all-atom clashscore for this structure is 2.

All (48) close contacts within the same asymmetric unit are listed below, sorted by their clash magnitude.

Atom-1	Atom-2	Interatomic distance (Å)	Clash overlap (Å)
4:C:506:MRD:H5C3	5:D:723:HOH:O	1.81	0.80
1:B:110:HIS:HE2	4:B:504:MRD:H5C2	1.53	0.74
1:B:112:GLY:O	1:B:116:LEU:HD23	1.88	0.72
1:B:110:HIS:NE2	4:B:504:MRD:H5C2	2.07	0.69
1:B:111:ARG:NE	4:B:504:MRD:HMC1	2.08	0.69
1:B:70:ASN:HD22	1:C:100:GLY:HA3	1.60	0.67
5:A:793:HOH:O	4:B:504:MRD:H5C1	1.93	0.67
4:C:506:MRD:O4	4:C:506:MRD:O2	2.12	0.66
1:D:423:LYS:HE2	5:D:988:HOH:O	1.95	0.66
1:A:423:LYS:HD2	5:A:823:HOH:O	1.95	0.66
1:B:111:ARG:HE	4:B:504:MRD:HMC1	1.63	0.62
1:B:265:LLP:HE3	1:B:265:LLP:O3	1.99	0.61
1:D:347:ILE:HD13	1:D:356[B]:CYS:SG	2.41	0.60
4:C:506:MRD:H3C2	5:C:1039:HOH:O	2.02	0.59
1:B:110:HIS:CE1	4:B:504:MRD:H5C2	2.37	0.59
1:B:399[B]:VAL:O	1:B:399[B]:VAL:HG12	2.03	0.58
1:C:265:LLP:O3	1:C:265:LLP:HE3	2.04	0.57
4:C:506:MRD:HMC2	5:D:982:HOH:O	2.04	0.56
1:C:110:HIS:NE2	4:C:506:MRD:H5C2	2.22	0.54
1:C:111:ARG:HH21	4:C:506:MRD:H3C1	1.73	0.53
1:A:423:LYS:CD	5:A:823:HOH:O	2.56	0.52
4:C:506:MRD:C5	5:D:723:HOH:O	2.49	0.51
1:C:70:ASN:N	5:C:601:HOH:O	2.43	0.51
1:B:111:ARG:HH21	4:B:504:MRD:H5C3	1.76	0.51
1:C:111:ARG:HH21	4:C:506:MRD:H5C2	1.75	0.50

Continued on next page...

Continued from previous page...

Atom-1	Atom-2	Interatomic distance (Å)	Clash overlap (Å)
5:A:999:HOH:O	4:B:504:MRD:H1C1	2.12	0.50
1:D:265:LLP:HE3	5:D:848:HOH:O	2.11	0.49
1:D:348:GLU:HG2	5:D:619:HOH:O	2.12	0.49
1:D:264:GLN:HG2	1:D:265:LLP:HD3	1.95	0.48
1:B:396[B]:HIS:CE1	1:B:398[B]:SER:HG	2.30	0.47
1:C:110:HIS:H	1:C:110:HIS:HD1	1.61	0.47
4:C:506:MRD:HMC3	1:D:396:HIS:CD2	2.51	0.46
1:A:265:LLP:HE3	1:A:265:LLP:C3	2.46	0.46
4:B:504:MRD:H5C3	4:B:504:MRD:O2	2.16	0.46
1:B:128:GLN:NE2	5:B:606:HOH:O	2.39	0.45
1:D:79:GLY:HA2	1:D:80:PRO:C	2.37	0.44
1:D:392:GLN:HG3	5:D:616:HOH:O	2.19	0.43
1:D:380[B]:GLU:OE1	5:D:601:HOH:O	2.21	0.42
1:C:111:ARG:NH2	4:C:506:MRD:H5C2	2.34	0.42
1:A:208:THR:HB	1:A:211:ALA:HB2	2.01	0.42
1:C:208:THR:HB	1:C:211:ALA:HB2	2.02	0.42
1:B:396[B]:HIS:ND1	1:B:398[B]:SER:OG	2.42	0.41
1:C:264:GLN:HB3	1:C:270[B]:SER:HA	2.01	0.41
1:A:265:LLP:O3	1:A:265:LLP:CE	2.69	0.41
1:C:264:GLN:HB3	1:C:270[A]:SER:HA	2.02	0.41
1:D:382:ILE:HG13	1:D:402[B]:MET:HE2	2.03	0.41
1:A:189:TRP:CZ3	1:A:200:PRO:HD3	2.56	0.40
1:C:212:LYS:NZ	5:C:617:HOH:O	2.54	0.40

There are no symmetry-related clashes.

5.3 Torsion angles [\(i\)](#)

5.3.1 Protein backbone [\(i\)](#)

In the following table, the Percentiles column shows the percent Ramachandran outliers of the chain as a percentile score with respect to all X-ray entries followed by that with respect to entries of similar resolution.

The Analysed column shows the number of residues for which the backbone conformation was analysed, and the total number of residues.

Mol	Chain	Analysed	Favoured	Allowed	Outliers	Percentiles	
1	A	363/362 (100%)	354 (98%)	9 (2%)	0	100	100
1	B	372/362 (103%)	361 (97%)	11 (3%)	0	100	100

Continued on next page...

Continued from previous page...

Mol	Chain	Analysed	Favoured	Allowed	Outliers	Percentiles	
1	C	364/362 (101%)	353 (97%)	11 (3%)	0	100	100
1	D	372/362 (103%)	366 (98%)	6 (2%)	0	100	100
All	All	1471/1448 (102%)	1434 (98%)	37 (2%)	0	100	100

There are no Ramachandran outliers to report.

5.3.2 Protein sidechains [i](#)

In the following table, the Percentiles column shows the percent sidechain outliers of the chain as a percentile score with respect to all X-ray entries followed by that with respect to entries of similar resolution.

The Analysed column shows the number of residues for which the sidechain conformation was analysed, and the total number of residues.

Mol	Chain	Analysed	Rotameric	Outliers	Percentiles	
1	A	311/307 (101%)	308 (99%)	3 (1%)	76	59
1	B	318/307 (104%)	316 (99%)	2 (1%)	86	76
1	C	312/307 (102%)	312 (100%)	0	100	100
1	D	320/307 (104%)	319 (100%)	1 (0%)	92	86
All	All	1261/1228 (103%)	1255 (100%)	6 (0%)	88	80

All (6) residues with a non-rotameric sidechain are listed below:

Mol	Chain	Res	Type
1	A	338	ARG
1	A	355	ARG
1	A	399	VAL
1	B	351	ASN
1	B	355	ARG
1	D	355	ARG

Some sidechains can be flipped to improve hydrogen bonding and reduce clashes. All (4) such sidechains are listed below:

Mol	Chain	Res	Type
1	A	351	ASN
1	A	392	GLN
1	B	70	ASN

Continued on next page...

Continued from previous page...

Mol	Chain	Res	Type
1	B	337	GLN

5.3.3 RNA [i](#)

There are no RNA molecules in this entry.

5.4 Non-standard residues in protein, DNA, RNA chains [i](#)

4 non-standard protein/DNA/RNA residues are modelled in this entry.

In the following table, the Counts columns list the number of bonds (or angles) for which Mogul statistics could be retrieved, the number of bonds (or angles) that are observed in the model and the number of bonds (or angles) that are defined in the Chemical Component Dictionary. The Link column lists molecule types, if any, to which the group is linked. The Z score for a bond length (or angle) is the number of standard deviations the observed value is removed from the expected value. A bond length (or angle) with $|Z| > 2$ is considered an outlier worth inspection. RMSZ is the root-mean-square of all Z scores of the bond lengths (or angles).

Mol	Type	Chain	Res	Link	Bond lengths			Bond angles		
					Counts	RMSZ	# Z > 2	Counts	RMSZ	# Z > 2
1	LLP	B	265	1	23,24,25	2.42	5 (21%)	25,32,34	2.01	6 (24%)
1	LLP	C	265	1	23,24,25	2.40	5 (21%)	25,32,34	1.84	6 (24%)
1	LLP	A	265	1	23,24,25	2.26	5 (21%)	25,32,34	1.97	5 (20%)
1	LLP	D	265	1	23,24,25	2.28	5 (21%)	25,32,34	1.67	9 (36%)

In the following table, the Chirals column lists the number of chiral outliers, the number of chiral centers analysed, the number of these observed in the model and the number defined in the Chemical Component Dictionary. Similar counts are reported in the Torsion and Rings columns. '-' means no outliers of that kind were identified.

Mol	Type	Chain	Res	Link	Chirals	Torsions	Rings
1	LLP	B	265	1	-	5/16/17/19	0/1/1/1
1	LLP	C	265	1	-	6/16/17/19	0/1/1/1
1	LLP	A	265	1	-	7/16/17/19	0/1/1/1
1	LLP	D	265	1	-	4/16/17/19	0/1/1/1

All (20) bond length outliers are listed below:

Mol	Chain	Res	Type	Atoms	Z	Observed(Å)	Ideal(Å)
1	C	265	LLP	C4'-NZ	6.94	1.50	1.27

Continued on next page...

Continued from previous page...

Mol	Chain	Res	Type	Atoms	Z	Observed(Å)	Ideal(Å)
1	A	265	LLP	C4'-NZ	6.78	1.50	1.27
1	D	265	LLP	C4'-NZ	6.51	1.49	1.27
1	B	265	LLP	C3-C2	6.43	1.47	1.40
1	B	265	LLP	C4'-NZ	6.03	1.47	1.27
1	D	265	LLP	C3-C2	5.11	1.46	1.40
1	C	265	LLP	C3-C2	4.77	1.45	1.40
1	C	265	LLP	C4-C5	4.69	1.47	1.42
1	D	265	LLP	C4-C3	4.48	1.47	1.40
1	B	265	LLP	C4-C3	4.45	1.47	1.40
1	A	265	LLP	C4-C5	4.37	1.47	1.42
1	A	265	LLP	C3-C2	4.36	1.45	1.40
1	C	265	LLP	C4-C3	3.96	1.46	1.40
1	A	265	LLP	C4-C3	3.79	1.46	1.40
1	B	265	LLP	C4-C4'	3.45	1.53	1.46
1	B	265	LLP	C4-C5	3.36	1.46	1.42
1	D	265	LLP	C4-C4'	3.30	1.52	1.46
1	C	265	LLP	C4-C4'	3.23	1.52	1.46
1	D	265	LLP	C4-C5	2.78	1.45	1.42
1	A	265	LLP	C4-C4'	2.34	1.51	1.46

All (26) bond angle outliers are listed below:

Mol	Chain	Res	Type	Atoms	Z	Observed(°)	Ideal(°)
1	A	265	LLP	CD-CE-NZ	5.27	123.85	110.93
1	B	265	LLP	C3-C4-C5	-5.23	114.25	118.26
1	C	265	LLP	CD-CE-NZ	4.44	121.81	110.93
1	C	265	LLP	CE-NZ-C4'	3.88	130.82	118.90
1	B	265	LLP	C4-C4'-NZ	-3.85	106.64	124.31
1	B	265	LLP	CD-CE-NZ	3.56	119.66	110.93
1	B	265	LLP	CE-NZ-C4'	3.38	129.29	118.90
1	D	265	LLP	C3-C4-C5	-3.32	115.71	118.26
1	A	265	LLP	C4-C3-C2	-3.29	118.15	120.19
1	A	265	LLP	C4-C4'-NZ	-3.29	109.21	124.31
1	A	265	LLP	CE-NZ-C4'	2.94	127.92	118.90
1	C	265	LLP	C5-C4-C4'	2.85	126.24	121.56
1	B	265	LLP	C4-C3-C2	-2.83	118.44	120.19
1	D	265	LLP	CD-CE-NZ	2.81	117.81	110.93
1	D	265	LLP	C4-C3-C2	-2.80	118.45	120.19
1	D	265	LLP	C4-C4'-NZ	-2.76	111.64	124.31
1	A	265	LLP	C6-N1-C2	2.74	124.24	119.17
1	C	265	LLP	C4-C4'-NZ	-2.63	112.23	124.31
1	B	265	LLP	C5-C4-C4'	2.43	125.55	121.56

Continued on next page...

Continued from previous page...

Mol	Chain	Res	Type	Atoms	Z	Observed(°)	Ideal(°)
1	D	265	LLP	CE-NZ-C4'	2.38	126.22	118.90
1	C	265	LLP	C3-C4-C5	-2.35	116.46	118.26
1	D	265	LLP	OP4-P-OP1	-2.18	100.36	106.47
1	D	265	LLP	C5-C4-C4'	2.13	125.06	121.56
1	D	265	LLP	OP3-P-OP2	2.12	115.75	107.64
1	C	265	LLP	O3-C3-C2	2.10	122.07	117.49
1	D	265	LLP	CG-CD-CE	2.08	120.82	113.57

There are no chirality outliers.

All (22) torsion outliers are listed below:

Mol	Chain	Res	Type	Atoms
1	B	265	LLP	C4-C4'-NZ-CE
1	C	265	LLP	C5-C4-C4'-NZ
1	C	265	LLP	C4-C4'-NZ-CE
1	A	265	LLP	C4-C4'-NZ-CE
1	D	265	LLP	C4-C4'-NZ-CE
1	B	265	LLP	CG-CD-CE-NZ
1	A	265	LLP	CG-CD-CE-NZ
1	B	265	LLP	C3-C4-C4'-NZ
1	C	265	LLP	C3-C4-C4'-NZ
1	A	265	LLP	C3-C4-C4'-NZ
1	B	265	LLP	CA-CB-CG-CD
1	B	265	LLP	C5-C4-C4'-NZ
1	D	265	LLP	CE-CD-CG-CB
1	A	265	LLP	C5-C4-C4'-NZ
1	A	265	LLP	CA-CB-CG-CD
1	C	265	LLP	CA-CB-CG-CD
1	C	265	LLP	CD-CE-NZ-C4'
1	D	265	LLP	CD-CE-NZ-C4'
1	C	265	LLP	CG-CD-CE-NZ
1	A	265	LLP	CD-CE-NZ-C4'
1	D	265	LLP	C3-C4-C4'-NZ
1	A	265	LLP	CE-CD-CG-CB

There are no ring outliers.

4 monomers are involved in 6 short contacts:

Mol	Chain	Res	Type	Clashes	Symm-Clashes
1	B	265	LLP	1	0
1	C	265	LLP	1	0

Continued on next page...

Continued from previous page...

Mol	Chain	Res	Type	Clashes	Symm-Clashes
1	A	265	LLP	2	0
1	D	265	LLP	2	0

5.5 Carbohydrates [i](#)

There are no carbohydrates in this entry.

5.6 Ligand geometry [i](#)

17 ligands are modelled in this entry.

In the following table, the Counts columns list the number of bonds (or angles) for which Mogul statistics could be retrieved, the number of bonds (or angles) that are observed in the model and the number of bonds (or angles) that are defined in the Chemical Component Dictionary. The Link column lists molecule types, if any, to which the group is linked. The Z score for a bond length (or angle) is the number of standard deviations the observed value is removed from the expected value. A bond length (or angle) with $|Z| > 2$ is considered an outlier worth inspection. RMSZ is the root-mean-square of all Z scores of the bond lengths (or angles).

Mol	Type	Chain	Res	Link	Bond lengths			Bond angles		
					Counts	RMSZ	$\# Z > 2$	Counts	RMSZ	$\# Z > 2$
2	SO4	B	501	-	4,4,4	0.34	0	6,6,6	0.27	0
2	SO4	A	501	-	4,4,4	0.32	0	6,6,6	0.18	0
2	SO4	D	501	-	4,4,4	0.32	0	6,6,6	0.29	0
2	SO4	A	505	-	4,4,4	0.28	0	6,6,6	0.24	0
2	SO4	C	502	-	4,4,4	0.49	0	6,6,6	0.39	0
4	MRD	C	506	-	7,7,7	0.48	0	9,10,10	0.77	0
2	SO4	A	502	-	4,4,4	0.39	0	6,6,6	0.42	0
4	MRD	B	504	-	7,7,7	0.24	0	9,10,10	0.52	0
2	SO4	C	501	-	4,4,4	0.29	0	6,6,6	0.09	0
3	PEG	B	503	-	6,6,6	0.43	0	5,5,5	0.11	0
3	PEG	C	505	-	6,6,6	0.41	0	5,5,5	0.15	0
3	PEG	A	506	-	6,6,6	0.43	0	5,5,5	0.30	0
2	SO4	C	503	-	4,4,4	0.30	0	6,6,6	0.27	0
2	SO4	B	502	-	4,4,4	0.32	0	6,6,6	0.05	0
2	SO4	A	504	-	4,4,4	0.49	0	6,6,6	0.21	0
2	SO4	A	503	-	4,4,4	0.36	0	6,6,6	0.61	0
2	SO4	C	504	-	4,4,4	0.33	0	6,6,6	0.19	0

In the following table, the Chirals column lists the number of chiral outliers, the number of chiral centers analysed, the number of these observed in the model and the number defined in the Chemical Component Dictionary. Similar counts are reported in the Torsion and Rings columns.

'-' means no outliers of that kind were identified.

Mol	Type	Chain	Res	Link	Chirals	Torsions	Rings
4	MRD	B	504	-	-	1/5/5/5	-
3	PEG	B	503	-	-	3/4/4/4	-
3	PEG	C	505	-	-	2/4/4/4	-
3	PEG	A	506	-	-	3/4/4/4	-
4	MRD	C	506	-	-	2/5/5/5	-

There are no bond length outliers.

There are no bond angle outliers.

There are no chirality outliers.

All (11) torsion outliers are listed below:

Mol	Chain	Res	Type	Atoms
4	B	504	MRD	C2-C3-C4-O4
3	A	506	PEG	O1-C1-C2-O2
3	A	506	PEG	O2-C3-C4-O4
3	C	505	PEG	O1-C1-C2-O2
3	B	503	PEG	O1-C1-C2-O2
3	B	503	PEG	C1-C2-O2-C3
3	A	506	PEG	C4-C3-O2-C2
3	C	505	PEG	O2-C3-C4-O4
3	B	503	PEG	O2-C3-C4-O4
4	C	506	MRD	C2-C3-C4-C5
4	C	506	MRD	C2-C3-C4-O4

There are no ring outliers.

2 monomers are involved in 19 short contacts:

Mol	Chain	Res	Type	Clashes	Symm-Clashes
4	C	506	MRD	10	0
4	B	504	MRD	9	0

5.7 Other polymers [i](#)

There are no such residues in this entry.

5.8 Polymer linkage issues

There are no chain breaks in this entry.

6 Fit of model and data [i](#)

6.1 Protein, DNA and RNA chains [i](#)

In the following table, the column labelled ‘#RSRZ> 2’ contains the number (and percentage) of RSRZ outliers, followed by percent RSRZ outliers for the chain as percentile scores relative to all X-ray entries and entries of similar resolution. The OWAB column contains the minimum, median, 95th percentile and maximum values of the occupancy-weighted average B-factor per residue. The column labelled ‘Q< 0.9’ lists the number of (and percentage) of residues with an average occupancy less than 0.9.

Mol	Chain	Analysed	<RSRZ>	#RSRZ>2	OWAB(Å ²)	Q<0.9
1	A	361/362 (99%)	-0.36	6 (1%) 70 71	14, 21, 37, 56	0
1	B	360/362 (99%)	-0.37	4 (1%) 80 82	13, 19, 32, 51	0
1	C	360/362 (99%)	-0.35	4 (1%) 80 82	13, 20, 34, 52	0
1	D	360/362 (99%)	-0.37	4 (1%) 80 82	14, 19, 30, 49	0
All	All	1441/1448 (99%)	-0.36	18 (1%) 79 80	13, 19, 34, 56	0

All (18) RSRZ outliers are listed below:

Mol	Chain	Res	Type	RSRZ
1	A	430	ALA	3.9
1	C	430	ALA	3.6
1	A	69	SER	3.6
1	A	398	SER	3.3
1	A	397	ARG	3.2
1	B	70	ASN	3.2
1	C	399	VAL	2.7
1	D	397	ARG	2.7
1	B	397[A]	ARG	2.7
1	A	399	VAL	2.6
1	B	399[A]	VAL	2.4
1	C	396	HIS	2.3
1	A	70	ASN	2.2
1	C	70	ASN	2.2
1	D	399	VAL	2.1
1	D	430	ALA	2.1
1	B	430	ALA	2.1
1	D	70	ASN	2.1

6.2 Non-standard residues in protein, DNA, RNA chains [i](#)

In the following table, the Atoms column lists the number of modelled atoms in the group and the number defined in the chemical component dictionary. The B-factors column lists the minimum, median, 95th percentile and maximum values of B factors of atoms in the group. The column labelled 'Q< 0.9' lists the number of atoms with occupancy less than 0.9.

Mol	Type	Chain	Res	Atoms	RSCC	RSR	B-factors(Å ²)	Q<0.9
1	LLP	C	265	24/25	0.97	0.07	14,16,25,27	0
1	LLP	A	265	24/25	0.97	0.07	14,17,26,27	0
1	LLP	D	265	24/25	0.97	0.07	14,16,24,25	0
1	LLP	B	265	24/25	0.98	0.07	14,16,27,27	0

6.3 Carbohydrates [i](#)

There are no carbohydrates in this entry.

6.4 Ligands [i](#)

In the following table, the Atoms column lists the number of modelled atoms in the group and the number defined in the chemical component dictionary. The B-factors column lists the minimum, median, 95th percentile and maximum values of B factors of atoms in the group. The column labelled 'Q< 0.9' lists the number of atoms with occupancy less than 0.9.

Mol	Type	Chain	Res	Atoms	RSCC	RSR	B-factors(Å ²)	Q<0.9
2	SO4	A	504	5/5	0.61	0.27	33,34,38,41	5
4	MRD	B	504	8/8	0.74	0.17	36,39,40,40	8
3	PEG	A	506	7/7	0.81	0.23	48,50,50,51	0
2	SO4	C	502	5/5	0.84	0.18	17,20,22,22	5
4	MRD	C	506	8/8	0.86	0.14	28,30,32,38	0
3	PEG	B	503	7/7	0.89	0.15	53,55,59,60	0
3	PEG	C	505	7/7	0.90	0.10	29,29,30,30	7
2	SO4	C	503	5/5	0.92	0.15	23,27,28,28	5
2	SO4	C	504	5/5	0.92	0.16	40,41,42,42	5
2	SO4	A	505	5/5	0.93	0.13	30,31,32,33	5
2	SO4	B	502	5/5	0.93	0.12	35,37,38,39	5
2	SO4	A	503	5/5	0.94	0.11	21,23,25,27	5
2	SO4	A	501	5/5	0.95	0.07	33,34,35,36	5
2	SO4	D	501	5/5	0.95	0.08	32,33,35,35	5
2	SO4	B	501	5/5	0.96	0.09	33,34,35,36	5
2	SO4	C	501	5/5	0.97	0.09	27,28,29,29	5
2	SO4	A	502	5/5	0.98	0.06	17,18,19,20	5

6.5 Other polymers

There are no such residues in this entry.