



Full wwPDB X-ray Structure Validation Report ⓘ

Dec 9, 2024 – 02:04 PM EST

PDB ID : 9D00
Title : HPK1 kinase domain T165E,S171E phosphomimetic mutant in complex with compound 53
Authors : Johnson, E.; McTigue, M.; Cronin, C.N.
Deposited on : 2024-08-05
Resolution : 1.95 Å(reported)

This is a Full wwPDB X-ray Structure Validation Report for a publicly released PDB entry.

We welcome your comments at validation@mail.wwpdb.org

A user guide is available at

<https://www.wwpdb.org/validation/2017/XrayValidationReportHelp>

with specific help available everywhere you see the ⓘ symbol.

The types of validation reports are described at

<http://www.wwpdb.org/validation/2017/FAQs#types>.

The following versions of software and data (see [references ⓘ](#)) were used in the production of this report:

MolProbity : 4.02b-467
Mogul : 2022.3.0, CSD as543be (2022)
Xtrriage (Phenix) : 1.21
EDS : 3.0
buster-report : 1.1.7 (2018)
Percentile statistics : 20231227.v01 (using entries in the PDB archive December 27th 2023)
CCP4 : 9.0.004 (Gargrove)
Density-Fitness : 1.0.11
Ideal geometry (proteins) : Engh & Huber (2001)
Ideal geometry (DNA, RNA) : Parkinson et al. (1996)
Validation Pipeline (wwPDB-VP) : 2.40

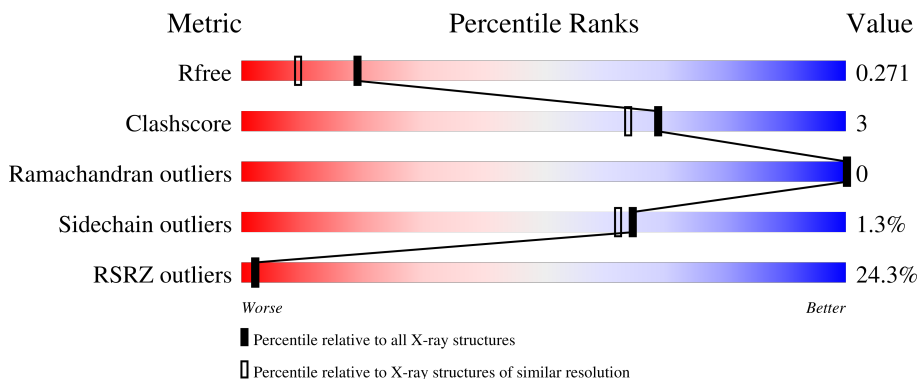
1 Overall quality at a glance

The following experimental techniques were used to determine the structure:

X-RAY DIFFRACTION

The reported resolution of this entry is 1.95 Å.

Percentile scores (ranging between 0-100) for global validation metrics of the entry are shown in the following graphic. The table shows the number of entries on which the scores are based.



Metric	Whole archive (#Entries)	Similar resolution (#Entries, resolution range(Å))
R_{free}	164625	3187 (1.96-1.96)
Clashscore	180529	3412 (1.96-1.96)
Ramachandran outliers	177936	3390 (1.96-1.96)
Sidechain outliers	177891	3390 (1.96-1.96)
RSRZ outliers	164620	3186 (1.96-1.96)

The table below summarises the geometric issues observed across the polymeric chains and their fit to the electron density. The red, orange, yellow and green segments of the lower bar indicate the fraction of residues that contain outliers for ≥ 3 , 2, 1 and 0 types of geometric quality criteria respectively. A grey segment represents the fraction of residues that are not modelled. The numeric value for each fraction is indicated below the corresponding segment, with a dot representing fractions $\leq 5\%$. The upper red bar (where present) indicates the fraction of residues that have poor fit to the electron density. The numeric value is given above the bar.

Mol	Chain	Length	Quality of chain
1	A	309	
1	B	309	
1	C	309	
1	D	309	

2 Entry composition [i](#)

There are 3 unique types of molecules in this entry. The entry contains 9632 atoms, of which 0 are hydrogens and 0 are deuteriums.

In the tables below, the ZeroOcc column contains the number of atoms modelled with zero occupancy, the AltConf column contains the number of residues with at least one atom in alternate conformation and the Trace column contains the number of residues modelled with at most 2 atoms.

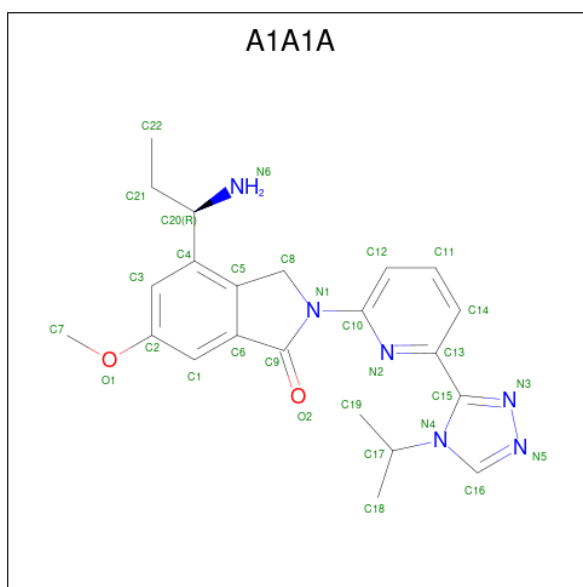
- Molecule 1 is a protein called Mitogen-activated protein kinase kinase kinase kinase 1.

Mol	Chain	Residues	Atoms					ZeroOcc	AltConf	Trace
			Total	C	N	O	S			
1	A	284	2244	1446	390	397	11	0	0	0
1	B	284	2244	1446	388	399	11	0	0	0
1	C	284	2246	1448	390	397	11	0	0	0
1	D	285	2251	1451	390	399	11	0	0	0

There are 16 discrepancies between the modelled and reference sequences:

Chain	Residue	Modelled	Actual	Comment	Reference
A	-1	GLY	-	expression tag	UNP Q92918
A	0	SER	-	expression tag	UNP Q92918
A	165	GLU	THR	conflict	UNP Q92918
A	171	GLU	SER	conflict	UNP Q92918
B	-1	GLY	-	expression tag	UNP Q92918
B	0	SER	-	expression tag	UNP Q92918
B	165	GLU	THR	conflict	UNP Q92918
B	171	GLU	SER	conflict	UNP Q92918
C	-1	GLY	-	expression tag	UNP Q92918
C	0	SER	-	expression tag	UNP Q92918
C	165	GLU	THR	conflict	UNP Q92918
C	171	GLU	SER	conflict	UNP Q92918
D	-1	GLY	-	expression tag	UNP Q92918
D	0	SER	-	expression tag	UNP Q92918
D	165	GLU	THR	conflict	UNP Q92918
D	171	GLU	SER	conflict	UNP Q92918

- Molecule 2 is 4-[(1R)-1-aminopropyl]-6-methoxy-2-{6-[4-(propan-2-yl)-4H-1,2,4-triazol-3-yl]pyridin-2-yl}-2,3-dihydro-1H-isoindol-1-one (three-letter code: A1A1A) (formula: C₂₂H₂₆N₆O₂) (labeled as "Ligand of Interest" by depositor).



Mol	Chain	Residues	Atoms				ZeroOcc	AltConf
			Total	C	N	O		
2	A	1	Total	C	N	O	0	0
			30	22	6	2		
2	B	1	Total	C	N	O	0	0
			30	22	6	2		
2	C	1	Total	C	N	O	0	0
			30	22	6	2		
2	D	1	Total	C	N	O	0	0
			30	22	6	2		

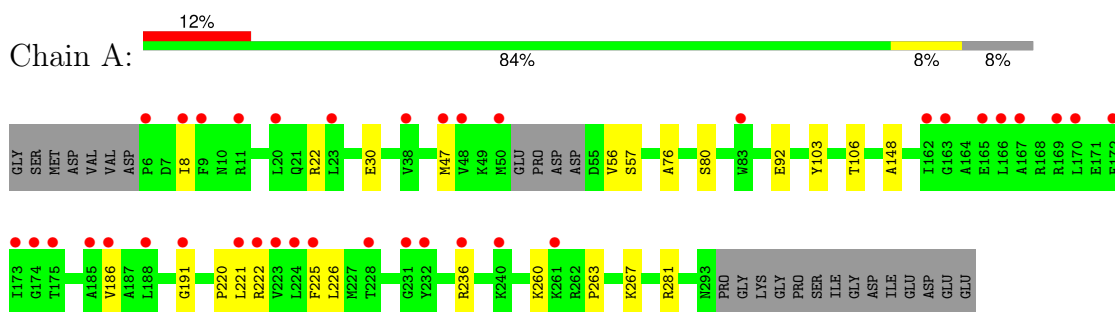
- Molecule 3 is water.

Mol	Chain	Residues	Atoms		ZeroOcc	AltConf
			Total	O		
3	A	135	Total	O	0	0
			135	135		
3	B	156	Total	O	0	0
			156	156		
3	C	134	Total	O	0	0
			134	134		
3	D	102	Total	O	0	0
			102	102		

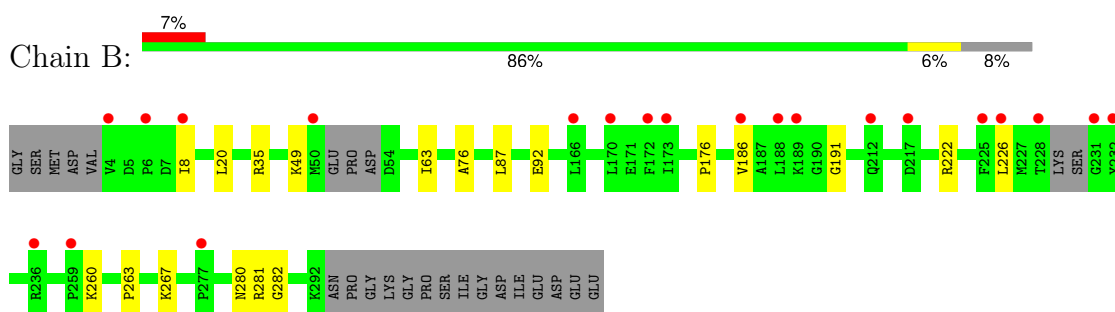
3 Residue-property plots [i](#)

These plots are drawn for all protein, RNA, DNA and oligosaccharide chains in the entry. The first graphic for a chain summarises the proportions of the various outlier classes displayed in the second graphic. The second graphic shows the sequence view annotated by issues in geometry and electron density. Residues are color-coded according to the number of geometric quality criteria for which they contain at least one outlier: green = 0, yellow = 1, orange = 2 and red = 3 or more. A red dot above a residue indicates a poor fit to the electron density ($RSRZ > 2$). Stretches of 2 or more consecutive residues without any outlier are shown as a green connector. Residues present in the sample, but not in the model, are shown in grey.

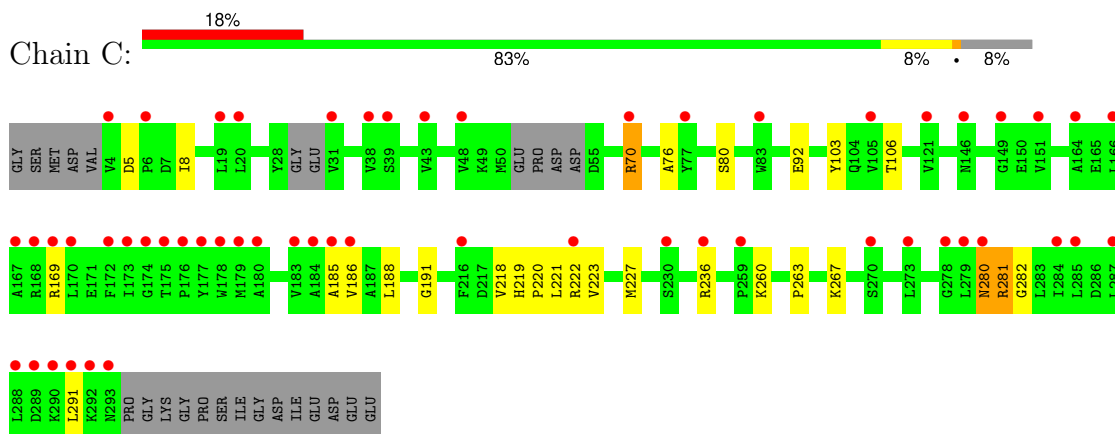
- Molecule 1: Mitogen-activated protein kinase kinase kinase kinase 1



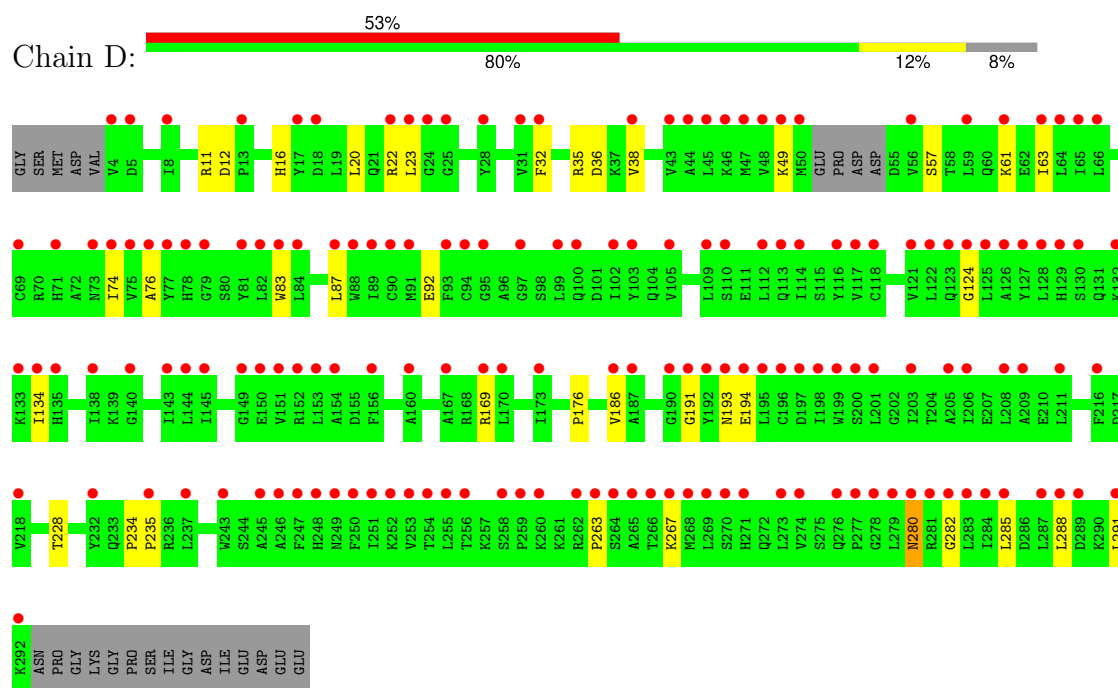
- Molecule 1: Mitogen-activated protein kinase kinase kinase kinase 1



- Molecule 1: Mitogen-activated protein kinase kinase kinase kinase 1



- Molecule 1: Mitogen-activated protein kinase kinase kinase kinase 1



4 Data and refinement statistics

Property	Value	Source
Space group	P 1	Depositor
Cell constants a, b, c, α , β , γ	56.78Å 80.33Å 84.09Å 103.45° 106.49° 103.18°	Depositor
Resolution (Å)	33.34 – 1.95 33.34 – 1.95	Depositor EDS
% Data completeness (in resolution range)	69.8 (33.34-1.95) 69.7 (33.34-1.95)	Depositor EDS
R_{merge}	(Not available)	Depositor
R_{sym}	(Not available)	Depositor
$\langle I/\sigma(I) \rangle$ ¹	1.57 (at 1.95Å)	Xtrriage
Refinement program	BUSTER 2.11.8 (21-NOV-2022)	Depositor
R, R_{free}	0.246 , 0.279 0.241 , 0.271	Depositor DCC
R_{free} test set	32254 reflections (4.94%)	wwPDB-VP
Wilson B-factor (Å ²)	40.0	Xtrriage
Anisotropy	0.023	Xtrriage
Bulk solvent k_{sol} (e/Å ³), B_{sol} (Å ²)	0.32 , 50.0	EDS
L-test for twinning ²	$\langle L \rangle = 0.51$, $\langle L^2 \rangle = 0.34$	Xtrriage
Estimated twinning fraction	No twinning to report.	Xtrriage
F_o, F_c correlation	0.94	EDS
Total number of atoms	9632	wwPDB-VP
Average B, all atoms (Å ²)	57.0	wwPDB-VP

Xtrriage's analysis on translational NCS is as follows: *The analyses of the Patterson function reveals a significant off-origin peak that is 39.67 % of the origin peak, indicating pseudo-translational symmetry. The chance of finding a peak of this or larger height randomly in a structure without pseudo-translational symmetry is equal to 3.0680e-04. The detected translational NCS is most likely also responsible for the elevated intensity ratio.*

¹Intensities estimated from amplitudes.

²Theoretical values of $\langle |L| \rangle$, $\langle L^2 \rangle$ for acentric reflections are 0.5, 0.333 respectively for untwinned datasets, and 0.375, 0.2 for perfectly twinned datasets.

5 Model quality [i](#)

5.1 Standard geometry [i](#)

Bond lengths and bond angles in the following residue types are not validated in this section: A1A1A

The Z score for a bond length (or angle) is the number of standard deviations the observed value is removed from the expected value. A bond length (or angle) with $|Z| > 5$ is considered an outlier worth inspection. RMSZ is the root-mean-square of all Z scores of the bond lengths (or angles).

Mol	Chain	Bond lengths		Bond angles	
		RMSZ	# Z >5	RMSZ	# Z >5
1	A	0.41	0/2291	0.54	0/3093
1	B	0.47	0/2290	0.55	0/3093
1	C	0.40	0/2292	0.55	0/3095
1	D	0.37	0/2298	0.52	0/3104
All	All	0.41	0/9171	0.54	0/12385

Chiral center outliers are detected by calculating the chiral volume of a chiral center and verifying if the center is modelled as a planar moiety or with the opposite hand. A planarity outlier is detected by checking planarity of atoms in a peptide group, atoms in a mainchain group or atoms of a sidechain that are expected to be planar.

Mol	Chain	#Chirality outliers	#Planarity outliers
1	C	0	3

There are no bond length outliers.

There are no bond angle outliers.

There are no chirality outliers.

All (3) planarity outliers are listed below:

Mol	Chain	Res	Type	Group
1	C	169	ARG	Sidechain
1	C	236	ARG	Sidechain
1	C	70	ARG	Sidechain

5.2 Too-close contacts [i](#)

In the following table, the Non-H and H(model) columns list the number of non-hydrogen atoms and hydrogen atoms in the chain respectively. The H(added) column lists the number of hydrogen atoms added and optimized by MolProbity. The Clashes column lists the number of clashes within

the asymmetric unit, whereas Symm-Clashes lists symmetry-related clashes.

Mol	Chain	Non-H	H(model)	H(added)	Clashes	Symm-Clashes
1	A	2244	0	2311	15	0
1	B	2244	0	2302	13	0
1	C	2246	0	2313	19	0
1	D	2251	0	2317	24	0
2	A	30	0	0	0	0
2	B	30	0	0	0	0
2	C	30	0	0	1	0
2	D	30	0	0	1	0
3	A	135	0	0	0	0
3	B	156	0	0	0	0
3	C	134	0	0	1	0
3	D	102	0	0	3	0
All	All	9632	0	9243	63	0

The all-atom clashscore is defined as the number of clashes found per 1000 atoms (including hydrogen atoms). The all-atom clashscore for this structure is 3.

All (63) close contacts within the same asymmetric unit are listed below, sorted by their clash magnitude.

Atom-1	Atom-2	Interatomic distance (Å)	Clash overlap (Å)
1:C:5:ASP:HB3	1:C:8:ILE:HG12	1.39	1.03
1:D:124:GLY:HA2	3:D:512:HOH:O	1.76	0.85
1:A:191:GLY:HA3	1:B:186:VAL:HG21	1.61	0.82
1:D:74:ILE:HG13	3:D:512:HOH:O	1.88	0.73
1:C:280:ASN:HD22	1:C:282:GLY:H	1.39	0.70
1:D:280:ASN:HD22	1:D:282:GLY:H	1.41	0.68
1:C:186:VAL:HG11	1:D:191:GLY:HA3	1.78	0.66
1:A:186:VAL:HG11	1:B:191:GLY:HA3	1.78	0.65
1:C:260:LYS:H	1:C:260:LYS:HD2	1.60	0.64
1:B:280:ASN:HD22	1:B:282:GLY:H	1.43	0.64
1:C:8:ILE:CD1	1:C:80:SER:HB2	2.28	0.63
1:B:260:LYS:HD2	1:B:260:LYS:H	1.63	0.63
1:C:191:GLY:HA3	1:D:186:VAL:HG21	1.81	0.63
1:C:8:ILE:HD13	1:C:80:SER:HB2	1.82	0.62
1:D:134:ILE:HG12	1:D:194:GLU:HB3	1.83	0.61
1:A:263:PRO:HB3	1:A:267:LYS:HD3	1.83	0.61
1:B:263:PRO:HB3	1:B:267:LYS:HD3	1.81	0.61
1:D:11:ARG:HH11	1:D:16:HIS:CE1	2.18	0.60
1:D:263:PRO:HB3	1:D:267:LYS:HD3	1.83	0.60
1:A:260:LYS:H	1:A:260:LYS:HD2	1.67	0.59

Continued on next page...

Continued from previous page...

Atom-1	Atom-2	Interatomic distance (Å)	Clash overlap (Å)
1:C:103:TYR:HA	1:C:106:THR:HG22	1.86	0.58
1:B:222:ARG:HH11	1:B:226:LEU:HD11	1.71	0.56
1:B:63:ILE:HD11	1:B:87:LEU:HD21	1.88	0.56
1:A:8:ILE:HD12	1:A:80:SER:HB2	1.90	0.52
1:C:218:VAL:HG13	1:C:222:ARG:HE	1.75	0.52
1:D:57:SER:O	1:D:61:LYS:HG2	2.09	0.52
1:D:285:LEU:HD23	1:D:288:LEU:HD12	1.92	0.52
1:A:220:PRO:HB3	1:B:176:PRO:HD3	1.91	0.51
1:D:11:ARG:NH1	1:D:16:HIS:CE1	2.78	0.51
1:D:169:ARG:HH12	1:D:186:VAL:HG12	1.77	0.49
1:C:76:ALA:HB3	1:C:92:GLU:HB2	1.95	0.49
1:C:281:ARG:HG3	3:C:502:HOH:O	2.12	0.49
1:A:76:ALA:HB3	1:A:92:GLU:HB2	1.95	0.48
1:C:5:ASP:HB3	1:C:8:ILE:CG1	2.26	0.48
1:A:191:GLY:HA3	1:B:186:VAL:CG2	2.39	0.48
1:A:148:ALA:O	1:A:281:ARG:HD2	2.14	0.47
1:B:76:ALA:HB3	1:B:92:GLU:HB2	1.98	0.46
1:D:63:ILE:HD11	1:D:87:LEU:HD21	1.97	0.46
1:D:76:ALA:HB3	1:D:92:GLU:HB2	1.97	0.46
1:C:219:HIS:CE1	1:C:221:LEU:HB3	2.51	0.45
1:C:223:VAL:O	1:C:227:MET:HG3	2.17	0.45
1:D:22:ARG:HG3	1:D:32:PHE:CE2	2.52	0.45
1:C:185:ALA:HA	1:D:228:THR:HG22	1.99	0.45
1:D:36:ASP:OD1	1:D:38:VAL:HG22	2.17	0.44
1:C:263:PRO:HB3	1:C:267:LYS:HD3	2.00	0.44
1:D:11:ARG:NH1	1:D:16:HIS:HE1	2.15	0.44
1:D:23:LEU:HD12	3:D:522:HOH:O	2.18	0.44
1:A:22:ARG:HH11	1:A:30:GLU:HB3	1.83	0.43
1:B:222:ARG:NH1	1:B:226:LEU:HD11	2.33	0.43
2:C:401:A1A1A:N2	2:C:401:A1A1A:C17	2.82	0.43
2:D:401:A1A1A:C17	2:D:401:A1A1A:N2	2.81	0.43
1:A:56:VAL:HG12	1:A:56:VAL:O	2.19	0.42
1:B:20:LEU:HD11	1:B:35:ARG:HB2	2.02	0.42
1:D:234:PRO:HA	1:D:235:PRO:HD3	1.97	0.42
1:A:191:GLY:CA	1:B:186:VAL:HG21	2.42	0.42
1:A:222:ARG:O	1:A:226:LEU:HG	2.20	0.41
1:C:188:LEU:HD12	1:D:228:THR:HG21	2.02	0.41
1:C:220:PRO:HB3	1:D:176:PRO:HD3	2.02	0.41
1:A:103:TYR:HA	1:A:106:THR:HG22	2.01	0.41
1:C:70:ARG:HD2	1:C:70:ARG:HA	1.78	0.41
1:D:20:LEU:HD11	1:D:35:ARG:HB2	2.03	0.40

Continued on next page...

Continued from previous page...

Atom-1	Atom-2	Interatomic distance (Å)	Clash overlap (Å)
1:A:221:LEU:HG	1:A:225:PHE:CE2	2.57	0.40
1:D:12:ASP:OD1	1:D:83:TRP:CD1	2.75	0.40

There are no symmetry-related clashes.

5.3 Torsion angles [\(i\)](#)

5.3.1 Protein backbone [\(i\)](#)

In the following table, the Percentiles column shows the percent Ramachandran outliers of the chain as a percentile score with respect to all X-ray entries followed by that with respect to entries of similar resolution.

The Analysed column shows the number of residues for which the backbone conformation was analysed, and the total number of residues.

Mol	Chain	Analysed	Favoured	Allowed	Outliers	Percentiles	
1	A	280/309 (91%)	275 (98%)	5 (2%)	0	100	100
1	B	278/309 (90%)	274 (99%)	4 (1%)	0	100	100
1	C	278/309 (90%)	273 (98%)	5 (2%)	0	100	100
1	D	281/309 (91%)	274 (98%)	7 (2%)	0	100	100
All	All	1117/1236 (90%)	1096 (98%)	21 (2%)	0	100	100

There are no Ramachandran outliers to report.

5.3.2 Protein sidechains [\(i\)](#)

In the following table, the Percentiles column shows the percent sidechain outliers of the chain as a percentile score with respect to all X-ray entries followed by that with respect to entries of similar resolution.

The Analysed column shows the number of residues for which the sidechain conformation was analysed, and the total number of residues.

Mol	Chain	Analysed	Rotameric	Outliers	Percentiles	
1	A	241/262 (92%)	238 (99%)	3 (1%)	67	65
1	B	241/262 (92%)	238 (99%)	3 (1%)	67	65
1	C	242/262 (92%)	239 (99%)	3 (1%)	67	65

Continued on next page...

Continued from previous page...

Mol	Chain	Analysed	Rotameric	Outliers	Percentiles	
1	D	242/262 (92%)	238 (98%)	4 (2%)	56	52
All	All	966/1048 (92%)	953 (99%)	13 (1%)	65	62

All (13) residues with a non-rotameric sidechain are listed below:

Mol	Chain	Res	Type
1	A	47	MET
1	A	57	SER
1	A	236	ARG
1	B	8	ILE
1	B	49	LYS
1	B	281	ARG
1	C	280	ASN
1	C	281	ARG
1	C	291	LEU
1	D	49	LYS
1	D	193	ASN
1	D	280	ASN
1	D	291	LEU

Sometimes sidechains can be flipped to improve hydrogen bonding and reduce clashes. All (14) such sidechains are listed below:

Mol	Chain	Res	Type
1	A	142	ASN
1	B	16	HIS
1	B	21	GLN
1	B	100	GLN
1	B	142	ASN
1	B	272	GLN
1	B	280	ASN
1	C	142	ASN
1	C	219	HIS
1	C	280	ASN
1	D	16	HIS
1	D	104	GLN
1	D	142	ASN
1	D	280	ASN

5.3.3 RNA [i](#)

There are no RNA molecules in this entry.

5.4 Non-standard residues in protein, DNA, RNA chains [i](#)

There are no non-standard protein/DNA/RNA residues in this entry.

5.5 Carbohydrates [i](#)

There are no oligosaccharides in this entry.

5.6 Ligand geometry [i](#)

4 ligands are modelled in this entry.

In the following table, the Counts columns list the number of bonds (or angles) for which Mogul statistics could be retrieved, the number of bonds (or angles) that are observed in the model and the number of bonds (or angles) that are defined in the Chemical Component Dictionary. The Link column lists molecule types, if any, to which the group is linked. The Z score for a bond length (or angle) is the number of standard deviations the observed value is removed from the expected value. A bond length (or angle) with $|Z| > 2$ is considered an outlier worth inspection. RMSZ is the root-mean-square of all Z scores of the bond lengths (or angles).

Mol	Type	Chain	Res	Link	Bond lengths			Bond angles		
					Counts	RMSZ	# Z > 2	Counts	RMSZ	# Z > 2
2	A1A1A	B	401	-	30,33,33	0.94	1 (3%)	37,48,48	1.46	6 (16%)
2	A1A1A	A	901	-	30,33,33	0.92	1 (3%)	37,48,48	1.42	5 (13%)
2	A1A1A	D	401	-	30,33,33	0.88	1 (3%)	37,48,48	1.51	6 (16%)
2	A1A1A	C	401	-	30,33,33	0.88	0	37,48,48	1.41	4 (10%)

In the following table, the Chirals column lists the number of chiral outliers, the number of chiral centers analysed, the number of these observed in the model and the number defined in the Chemical Component Dictionary. Similar counts are reported in the Torsion and Rings columns. '-' means no outliers of that kind were identified.

Mol	Type	Chain	Res	Link	Chirals	Torsions	Rings
2	A1A1A	B	401	-	-	0/20/32/32	0/4/4/4
2	A1A1A	A	901	-	-	1/20/32/32	0/4/4/4
2	A1A1A	D	401	-	-	2/20/32/32	0/4/4/4
2	A1A1A	C	401	-	-	2/20/32/32	0/4/4/4

All (3) bond length outliers are listed below:

Mol	Chain	Res	Type	Atoms	Z	Observed(Å)	Ideal(Å)
2	A	901	A1A1A	C13-C15	-2.44	1.43	1.47
2	B	401	A1A1A	C13-C15	-2.16	1.43	1.47
2	D	401	A1A1A	C17-N4	-2.09	1.46	1.49

All (21) bond angle outliers are listed below:

Mol	Chain	Res	Type	Atoms	Z	Observed(°)	Ideal(°)
2	D	401	A1A1A	C8-N1-C9	-4.39	108.68	112.39
2	C	401	A1A1A	O2-C9-C6	-3.74	121.41	128.66
2	A	901	A1A1A	O2-C9-C6	-3.73	121.43	128.66
2	D	401	A1A1A	O2-C9-C6	-3.66	121.56	128.66
2	A	901	A1A1A	O2-C9-N1	3.42	131.49	125.90
2	B	401	A1A1A	O2-C9-C6	-3.39	122.09	128.66
2	D	401	A1A1A	O2-C9-N1	3.14	131.04	125.90
2	B	401	A1A1A	C8-N1-C9	-3.12	109.75	112.39
2	A	901	A1A1A	C16-N4-C15	-3.04	105.14	108.66
2	C	401	A1A1A	O2-C9-N1	3.00	130.80	125.90
2	C	401	A1A1A	C8-N1-C9	-2.93	109.92	112.39
2	B	401	A1A1A	O2-C9-N1	2.91	130.65	125.90
2	B	401	A1A1A	C22-C21-C20	-2.90	106.07	113.34
2	B	401	A1A1A	C1-C6-C5	-2.89	120.56	123.27
2	C	401	A1A1A	C16-N4-C15	-2.46	105.82	108.66
2	A	901	A1A1A	C8-N1-C9	-2.34	110.41	112.39
2	B	401	A1A1A	C16-N4-C15	-2.27	106.03	108.66
2	D	401	A1A1A	C7-O1-C2	-2.18	112.82	117.50
2	D	401	A1A1A	C16-N4-C15	-2.17	106.15	108.66
2	A	901	A1A1A	C21-C20-N6	-2.16	102.09	110.57
2	D	401	A1A1A	C5-C8-N1	2.13	104.77	102.53

There are no chirality outliers.

All (5) torsion outliers are listed below:

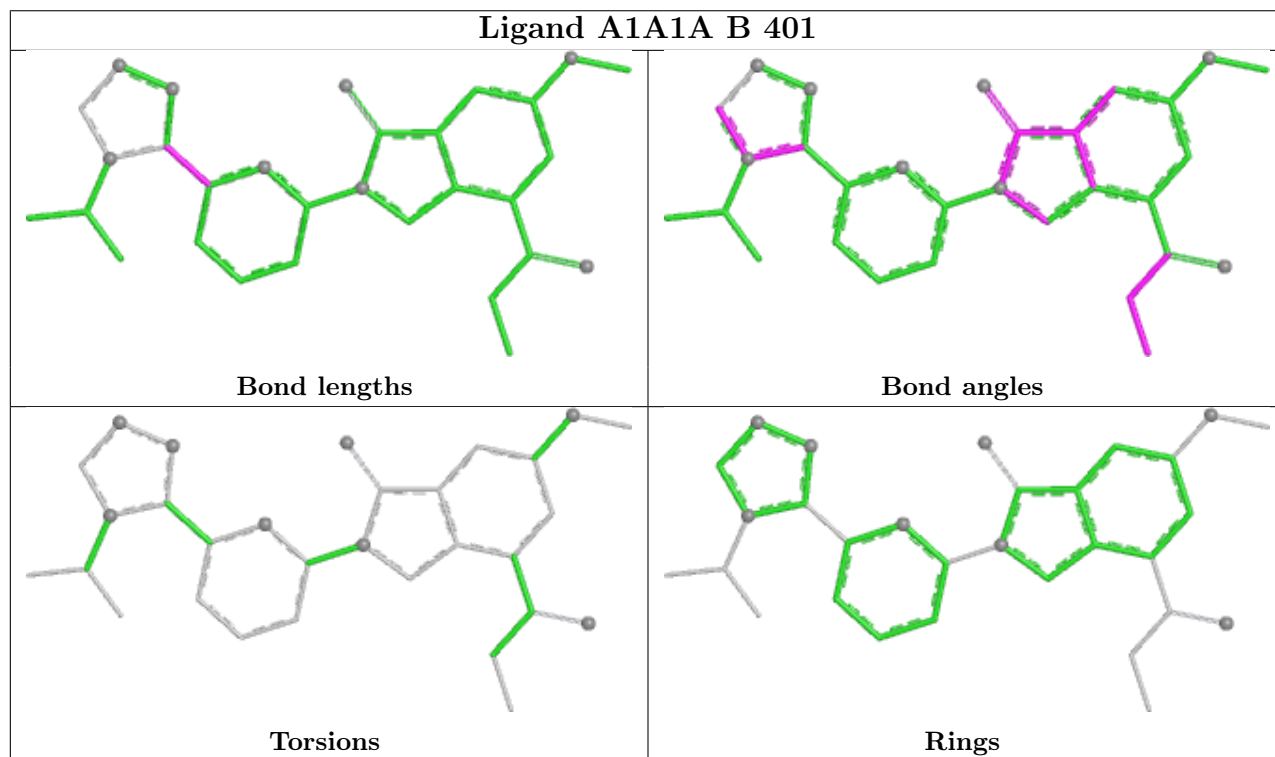
Mol	Chain	Res	Type	Atoms
2	D	401	A1A1A	N6-C20-C21-C22
2	C	401	A1A1A	C1-C2-O1-C7
2	C	401	A1A1A	C3-C2-O1-C7
2	D	401	A1A1A	C4-C20-C21-C22
2	A	901	A1A1A	C18-C17-N4-C16

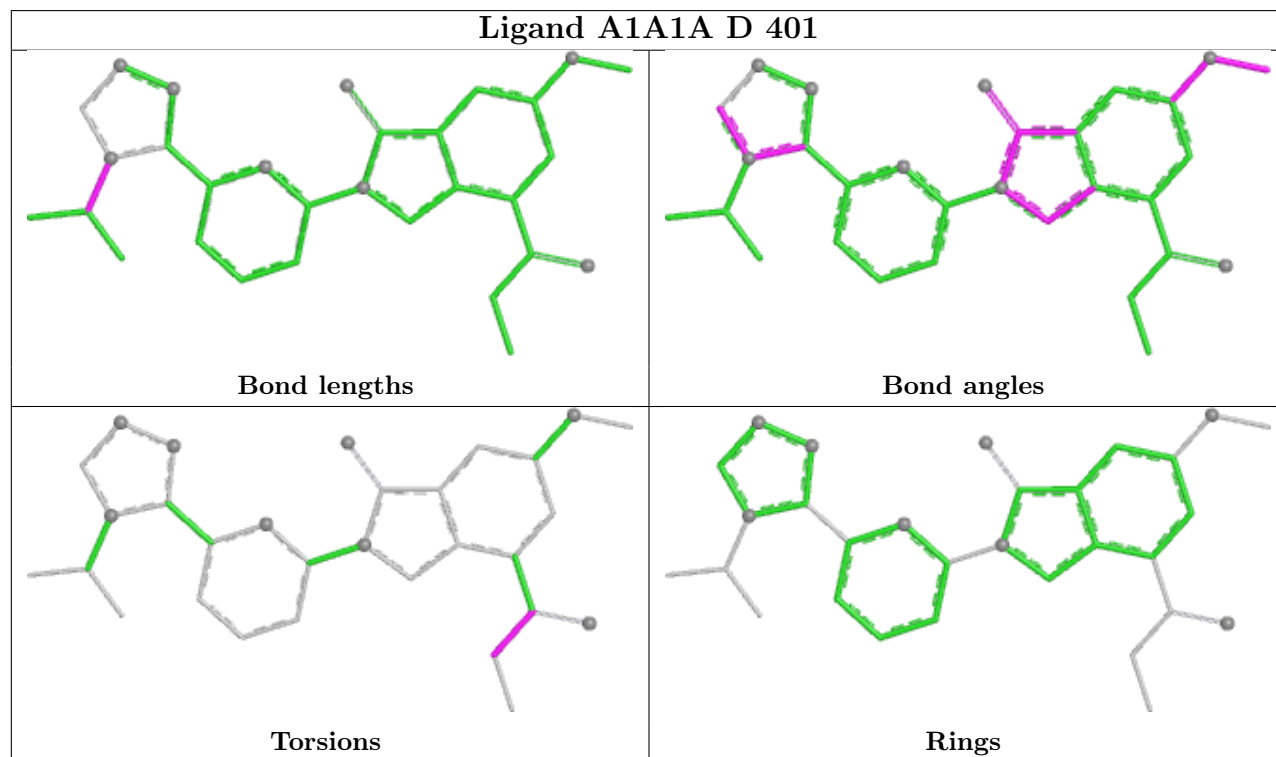
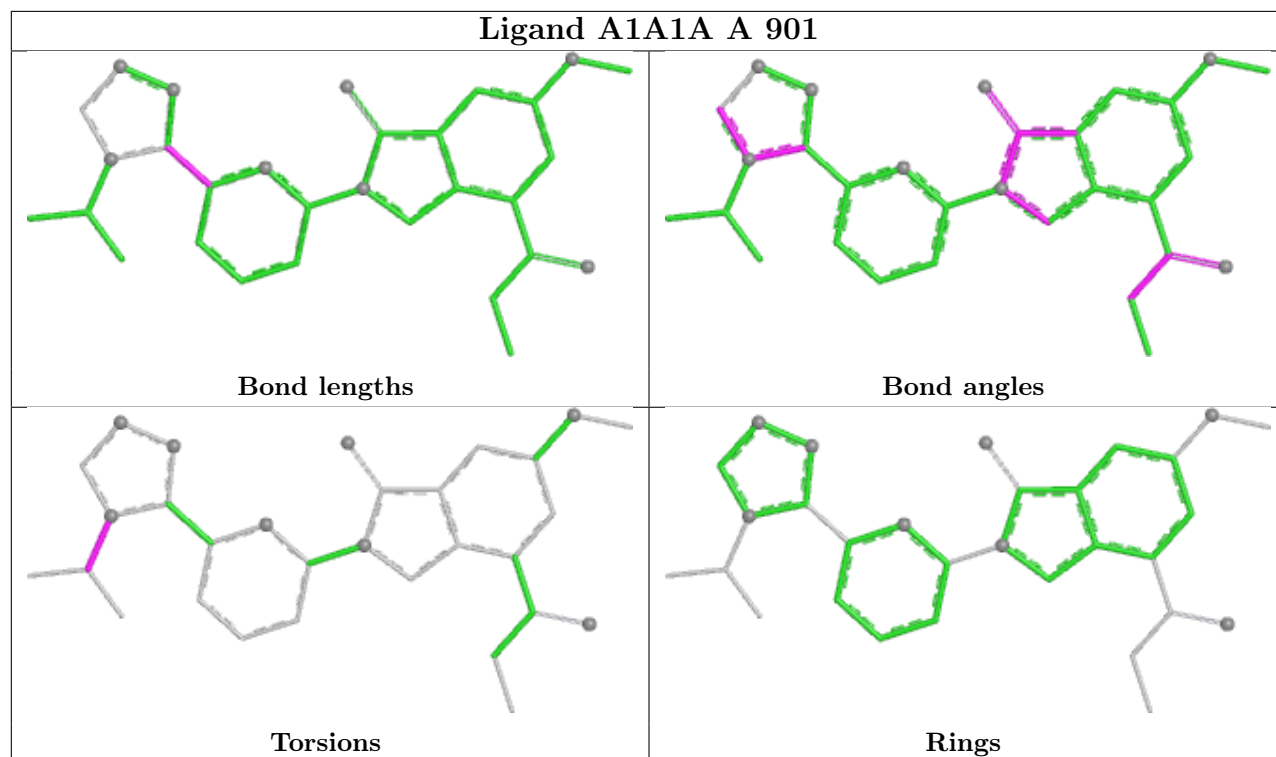
There are no ring outliers.

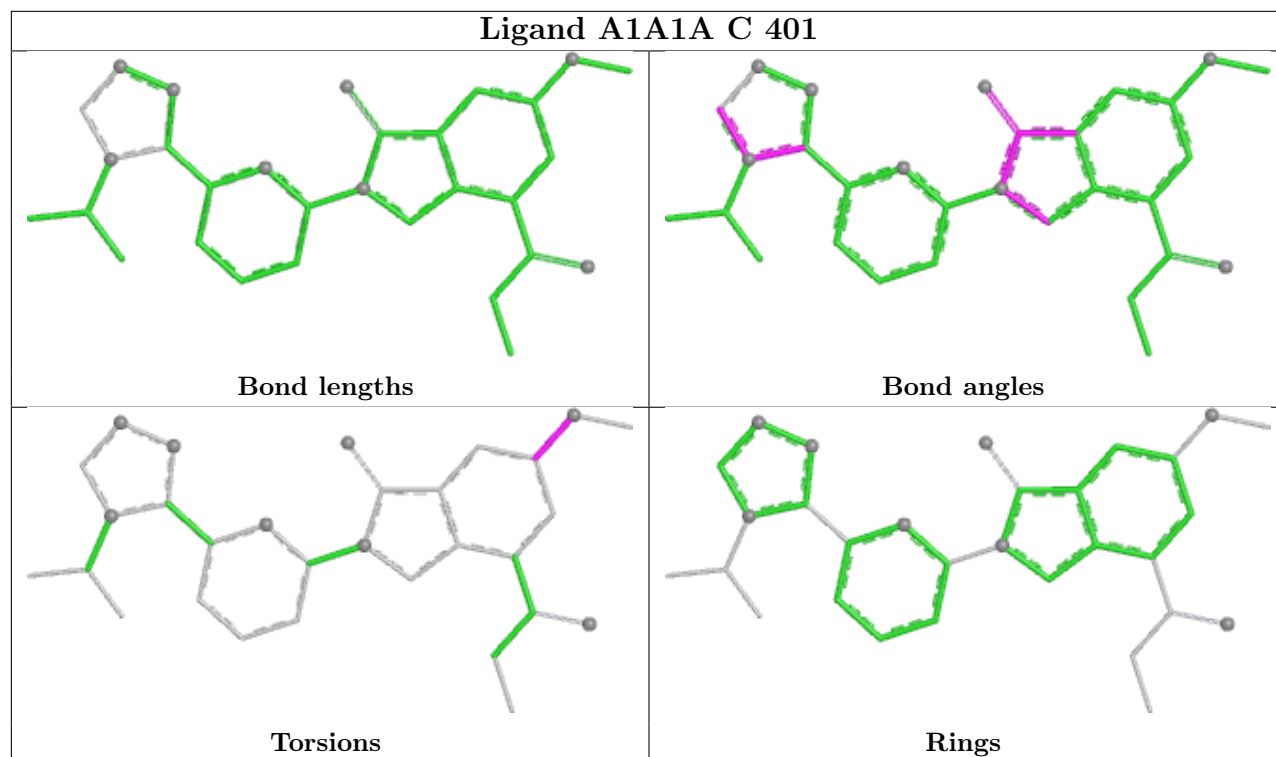
2 monomers are involved in 2 short contacts:

Mol	Chain	Res	Type	Clashes	Symm-Clashes
2	D	401	A1A1A	1	0
2	C	401	A1A1A	1	0

The following is a two-dimensional graphical depiction of Mogul quality analysis of bond lengths, bond angles, torsion angles, and ring geometry for all instances of the Ligand of Interest. In addition, ligands with molecular weight > 250 and outliers as shown on the validation Tables will also be included. For torsion angles, if less than 5% of the Mogul distribution of torsion angles is within 10 degrees of the torsion angle in question, then that torsion angle is considered an outlier. Any bond that is central to one or more torsion angles identified as an outlier by Mogul will be highlighted in the graph. For rings, the root-mean-square deviation (RMSD) between the ring in question and similar rings identified by Mogul is calculated over all ring torsion angles. If the average RMSD is greater than 60 degrees and the minimal RMSD between the ring in question and any Mogul-identified rings is also greater than 60 degrees, then that ring is considered an outlier. The outliers are highlighted in purple. The color gray indicates Mogul did not find sufficient equivalents in the CSD to analyse the geometry.







5.7 Other polymers [i](#)

There are no such residues in this entry.

5.8 Polymer linkage issues [i](#)

There are no chain breaks in this entry.

6 Fit of model and data [i](#)

6.1 Protein, DNA and RNA chains [i](#)

In the following table, the column labelled ‘#RSRZ > 2’ contains the number (and percentage) of RSRZ outliers, followed by percent RSRZ outliers for the chain as percentile scores relative to all X-ray entries and entries of similar resolution. The OWAB column contains the minimum, median, 95th percentile and maximum values of the occupancy-weighted average B-factor per residue. The column labelled ‘Q < 0.9’ lists the number of (and percentage) of residues with an average occupancy less than 0.9.

Mol	Chain	Analysed	<RSRZ>	#RSRZ>2	OWAB(Å ²)	Q<0.9
1	A	284/309 (91%)	0.85	37 (13%) 9 11	27, 48, 80, 93	0
1	B	284/309 (91%)	0.42	21 (7%) 22 27	25, 38, 66, 86	0
1	C	284/309 (91%)	1.22	55 (19%) 4 4	28, 57, 90, 128	0
1	D	285/309 (92%)	2.35	163 (57%) 0 0	36, 75, 96, 113	0
All	All	1137/1236 (91%)	1.21	276 (24%) 2 2	25, 55, 90, 128	0

All (276) RSRZ outliers are listed below:

Mol	Chain	Res	Type	RSRZ
1	A	173	ILE	7.1
1	D	273	LEU	7.1
1	D	247	PHE	6.7
1	C	178	TRP	6.6
1	B	4	VAL	6.6
1	D	4	VAL	6.4
1	D	251	ILE	5.9
1	D	117	VAL	5.8
1	D	274	VAL	5.8
1	D	279	LEU	5.6
1	C	288	LEU	5.5
1	D	254	THR	5.4
1	D	198	ILE	5.2
1	D	75	VAL	5.2
1	D	66	LEU	5.0
1	C	173	ILE	4.9
1	D	250	PHE	4.9
1	D	265	ALA	4.8
1	B	228	THR	4.8
1	D	109	LEU	4.8
1	D	153	LEU	4.8

Continued on next page...

Continued from previous page...

Mol	Chain	Res	Type	RSRZ
1	D	145	ILE	4.8
1	D	259	PRO	4.8
1	D	195	LEU	4.8
1	C	179	MET	4.6
1	C	176	PRO	4.6
1	D	90	CYS	4.6
1	D	255	LEU	4.5
1	C	38	VAL	4.5
1	D	288	LEU	4.4
1	D	269	LEU	4.4
1	D	151	VAL	4.4
1	A	232	TYR	4.4
1	A	6	PRO	4.4
1	C	287	LEU	4.3
1	C	174	GLY	4.3
1	D	266	THR	4.3
1	B	259	PRO	4.3
1	C	291	LEU	4.2
1	D	121	VAL	4.2
1	D	129	HIS	4.1
1	D	281	ARG	4.1
1	C	31	VAL	4.0
1	D	152	ARG	4.0
1	D	144	LEU	4.0
1	D	283	LEU	4.0
1	D	263	PRO	4.0
1	D	201	LEU	4.0
1	D	154	ALA	4.0
1	C	270	SER	3.9
1	D	253	VAL	3.9
1	D	118	CYS	3.9
1	A	174	GLY	3.9
1	B	217	ASP	3.9
1	D	277	PRO	3.9
1	B	170	LEU	3.9
1	D	208	LEU	3.9
1	A	169	ARG	3.8
1	C	175	THR	3.8
1	A	167	ALA	3.8
1	D	47	MET	3.8
1	D	205	ALA	3.8
1	D	169	ARG	3.8

Continued on next page...

Continued from previous page...

Mol	Chain	Res	Type	RSRZ
1	D	130	SER	3.7
1	D	63	ILE	3.7
1	A	231	GLY	3.7
1	D	114	ILE	3.7
1	B	173	ILE	3.6
1	C	186	VAL	3.6
1	C	170	LEU	3.6
1	D	284	ILE	3.5
1	D	264	SER	3.5
1	D	235	PRO	3.5
1	D	56	VAL	3.5
1	D	23	LEU	3.5
1	A	170	LEU	3.4
1	C	279	LEU	3.4
1	D	87	LEU	3.4
1	B	225	PHE	3.4
1	C	172	PHE	3.4
1	C	183	VAL	3.4
1	D	112	LEU	3.4
1	D	200	SER	3.4
1	D	143	ILE	3.4
1	D	216	PHE	3.4
1	D	48	VAL	3.4
1	D	105	VAL	3.4
1	D	65	ILE	3.4
1	D	116	TYR	3.3
1	A	225	PHE	3.3
1	D	50	MET	3.3
1	A	172	PHE	3.3
1	D	122	LEU	3.2
1	D	199	TRP	3.2
1	D	249	ASN	3.2
1	D	280	ASN	3.2
1	D	8	ILE	3.2
1	D	134	ILE	3.2
1	B	8	ILE	3.2
1	C	216	PHE	3.2
1	D	31	VAL	3.2
1	C	284	ILE	3.2
1	C	177	TYR	3.2
1	C	180	ALA	3.2
1	C	19	LEU	3.1

Continued on next page...

Continued from previous page...

Mol	Chain	Res	Type	RSRZ
1	D	124	GLY	3.1
1	D	88	TRP	3.1
1	D	93	PHE	3.1
1	D	173	ILE	3.1
1	D	59	LEU	3.1
1	D	138	ILE	3.1
1	D	246	ALA	3.1
1	C	259	PRO	3.0
1	D	197	ASP	3.0
1	D	25	GLY	3.0
1	D	291	LEU	3.0
1	D	38	VAL	3.0
1	D	193	ASN	3.0
1	D	76	ALA	3.0
1	D	149	GLY	3.0
1	D	84	LEU	3.0
1	A	236	ARG	3.0
1	D	252	LYS	3.0
1	D	97	GLY	3.0
1	D	103	TYR	3.0
1	C	285	LEU	3.0
1	D	73	ASN	2.9
1	B	166	LEU	2.9
1	D	287	LEU	2.9
1	C	4	VAL	2.9
1	D	89	ILE	2.9
1	D	45	LEU	2.9
1	C	230	SER	2.9
1	D	282	GLY	2.8
1	D	83	TRP	2.8
1	B	236	ARG	2.8
1	D	194	GLU	2.8
1	D	74	ILE	2.8
1	D	49	LYS	2.8
1	D	99	LEU	2.8
1	D	140	GLY	2.8
1	D	17	TYR	2.8
1	D	77	TYR	2.8
1	A	47	MET	2.8
1	D	186	VAL	2.7
1	D	245	ALA	2.7
1	D	260	LYS	2.7

Continued on next page...

Continued from previous page...

Mol	Chain	Res	Type	RSRZ
1	D	126	ALA	2.7
1	D	206	ILE	2.7
1	C	273	LEU	2.7
1	D	81	TYR	2.7
1	A	186	VAL	2.7
1	C	39	SER	2.7
1	D	13	PRO	2.7
1	B	232	TYR	2.6
1	D	28	TYR	2.6
1	D	43	VAL	2.6
1	C	278	GLY	2.6
1	A	9	PHE	2.6
1	D	271	HIS	2.6
1	C	293	ASN	2.6
1	A	11	ARG	2.6
1	D	203	ILE	2.6
1	D	211	LEU	2.6
1	A	175	THR	2.6
1	D	289	ASP	2.6
1	D	94	CYS	2.5
1	A	8	ILE	2.5
1	D	102	ILE	2.5
1	A	166	LEU	2.5
1	D	285	LEU	2.5
1	D	18	ASP	2.5
1	A	48	VAL	2.5
1	C	151	VAL	2.5
1	D	32	PHE	2.5
1	D	232	TYR	2.5
1	C	280	ASN	2.5
1	C	149	GLY	2.5
1	A	223	VAL	2.5
1	D	243	TRP	2.5
1	D	258	SER	2.5
1	D	268	MET	2.5
1	B	231	GLY	2.5
1	D	262	ARG	2.5
1	D	82	LEU	2.5
1	D	24	GLY	2.4
1	A	188	LEU	2.4
1	C	43	VAL	2.4
1	D	267	LYS	2.4

Continued on next page...

Continued from previous page...

Mol	Chain	Res	Type	RSRZ
1	A	191	GLY	2.4
1	A	224	LEU	2.4
1	D	128	LEU	2.4
1	D	187	ALA	2.4
1	B	277	PRO	2.4
1	D	69	CYS	2.4
1	D	127	TYR	2.4
1	A	228	THR	2.4
1	C	236	ARG	2.4
1	A	163	GLY	2.4
1	D	218	VAL	2.4
1	C	77	TYR	2.4
1	D	64	LEU	2.3
1	D	125	LEU	2.3
1	D	44	ALA	2.3
1	D	71	HIS	2.3
1	C	83	TRP	2.3
1	D	278	GLY	2.3
1	D	133	LYS	2.3
1	D	192	TYR	2.3
1	D	292	LYS	2.3
1	C	184	ALA	2.3
1	D	123	GLN	2.3
1	D	190	GLY	2.3
1	C	168	ARG	2.3
1	C	290	LYS	2.3
1	C	20	LEU	2.3
1	D	100	GLN	2.3
1	D	209	ALA	2.2
1	C	222	ARG	2.2
1	B	189	LYS	2.2
1	D	135	HIS	2.2
1	B	186	VAL	2.2
1	D	95	GLY	2.2
1	D	113	GLN	2.2
1	A	38	VAL	2.2
1	D	170	LEU	2.2
1	C	167	ALA	2.2
1	D	167	ALA	2.2
1	C	289	ASP	2.2
1	D	256	THR	2.2
1	D	196	CYS	2.2

Continued on next page...

Continued from previous page...

Mol	Chain	Res	Type	RSRZ
1	D	46	LYS	2.2
1	D	156	PHE	2.2
1	B	188	LEU	2.2
1	C	164	ALA	2.2
1	D	150	GLU	2.2
1	B	6	PRO	2.2
1	A	162	ILE	2.2
1	D	110	SER	2.1
1	D	132	LYS	2.1
1	C	146	ASN	2.1
1	A	261	LYS	2.1
1	C	292	LYS	2.1
1	C	105	VAL	2.1
1	B	172	PHE	2.1
1	C	166	LEU	2.1
1	D	160	ALA	2.1
1	A	240	LYS	2.1
1	A	50	MET	2.1
1	D	91	MET	2.1
1	A	165	GLU	2.1
1	D	22	ARG	2.1
1	D	248	HIS	2.1
1	A	221	LEU	2.1
1	D	61	LYS	2.1
1	A	222	ARG	2.1
1	D	191	GLY	2.1
1	C	48	VAL	2.0
1	A	185	ALA	2.0
1	A	20	LEU	2.0
1	A	23	LEU	2.0
1	D	237	LEU	2.0
1	D	276	GLN	2.0
1	D	270	SER	2.0
1	C	70	ARG	2.0
1	C	169	ARG	2.0
1	A	83	TRP	2.0
1	D	78	HIS	2.0
1	D	79	GLY	2.0
1	D	5	ASP	2.0
1	B	212	GLN	2.0
1	C	6	PRO	2.0
1	C	121	VAL	2.0

Continued on next page...

Continued from previous page...

Mol	Chain	Res	Type	RSRZ
1	C	185	ALA	2.0
1	B	50	MET	2.0
1	B	226	LEU	2.0

6.2 Non-standard residues in protein, DNA, RNA chains [i](#)

There are no non-standard protein/DNA/RNA residues in this entry.

6.3 Carbohydrates [i](#)

There are no monosaccharides in this entry.

6.4 Ligands [i](#)

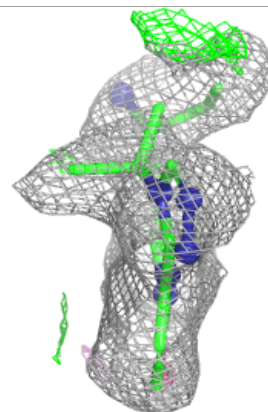
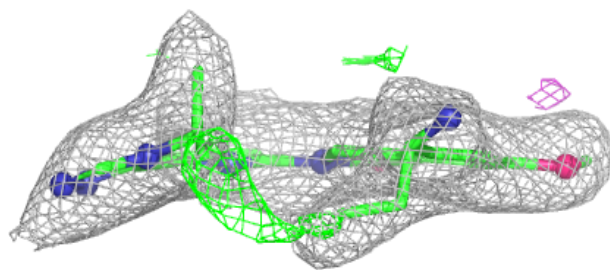
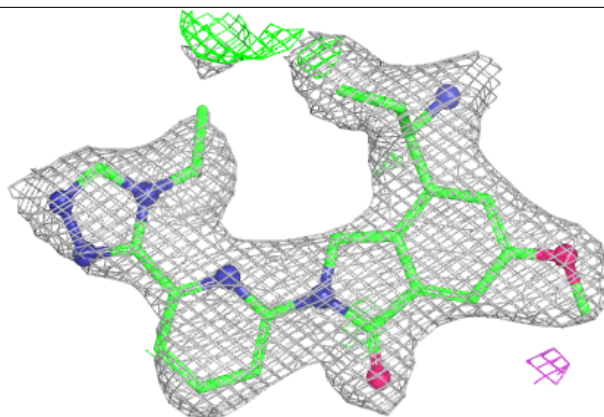
In the following table, the Atoms column lists the number of modelled atoms in the group and the number defined in the chemical component dictionary. The B-factors column lists the minimum, median, 95th percentile and maximum values of B factors of atoms in the group. The column labelled 'Q< 0.9' lists the number of atoms with occupancy less than 0.9.

Mol	Type	Chain	Res	Atoms	RSCC	RSR	B-factors(\AA^2)	Q<0.9
2	A1A1A	D	401	30/30	0.80	0.13	65,67,67,67	0
2	A1A1A	C	401	30/30	0.93	0.08	40,46,48,48	0
2	A1A1A	B	401	30/30	0.96	0.06	24,27,31,33	0
2	A1A1A	A	901	30/30	0.97	0.06	34,36,38,39	0

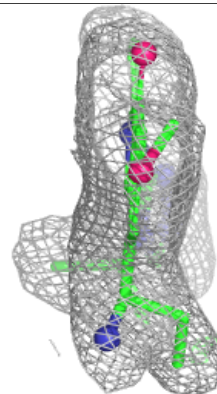
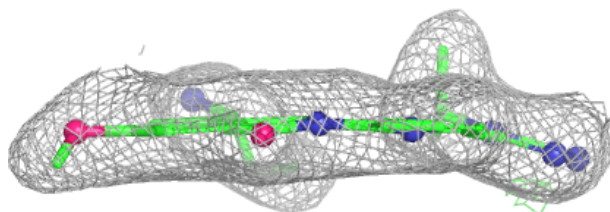
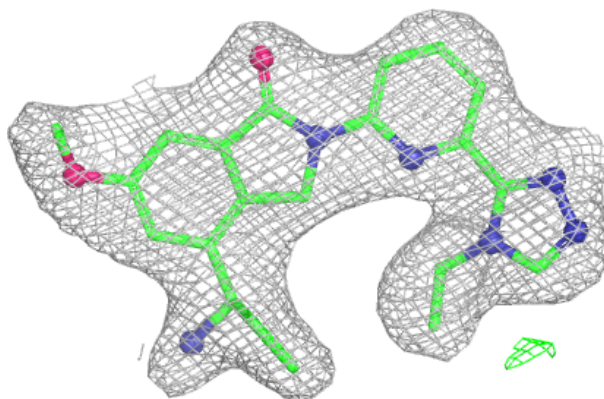
The following is a graphical depiction of the model fit to experimental electron density of all instances of the Ligand of Interest. In addition, ligands with molecular weight > 250 and outliers as shown on the geometry validation Tables will also be included. Each fit is shown from different orientation to approximate a three-dimensional view.

Electron density around A1A1A D 401:

$2mF_o-DF_c$ (at 0.7 rmsd) in gray
 mF_o-DF_c (at 3 rmsd) in purple (negative)
and green (positive)

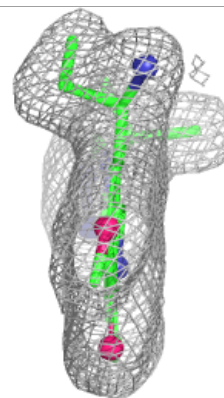
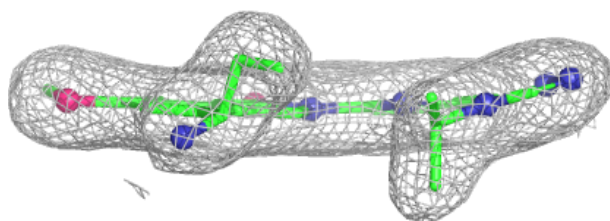
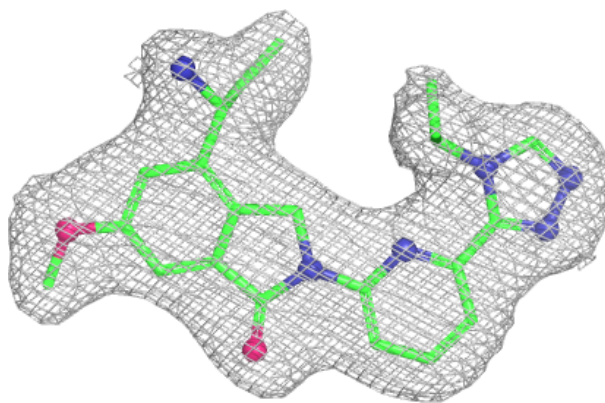
**Electron density around A1A1A C 401:**

$2mF_o-DF_c$ (at 0.7 rmsd) in gray
 mF_o-DF_c (at 3 rmsd) in purple (negative)
and green (positive)

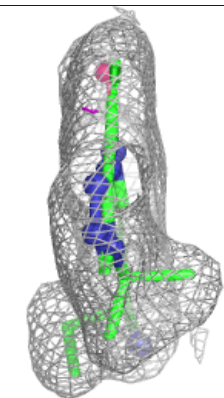
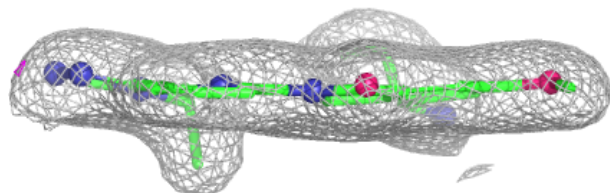
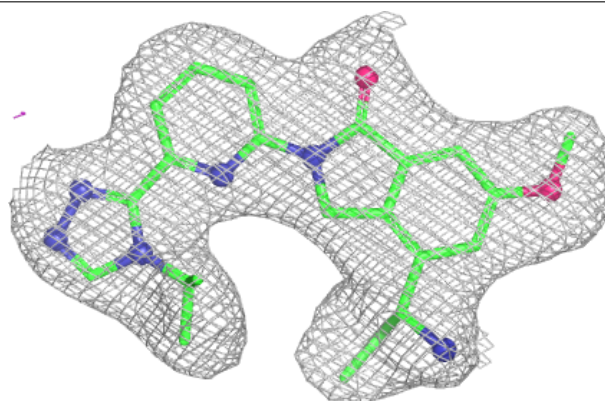


Electron density around A1A1A B 401:

$2mF_o-DF_c$ (at 0.7 rmsd) in gray
 mF_o-DF_c (at 3 rmsd) in purple (negative)
and green (positive)

**Electron density around A1A1A A 901:**

$2mF_o-DF_c$ (at 0.7 rmsd) in gray
 mF_o-DF_c (at 3 rmsd) in purple (negative)
and green (positive)



6.5 Other polymers

There are no such residues in this entry.