



Full wwPDB X-ray Structure Validation Report ⓘ

Dec 15, 2024 – 12:42 AM EST

PDB ID : 1D2V
Title : CRYSTAL STRUCTURE OF BROMIDE-BOUND HUMAN MYELOPER-
OXIDASE ISOFORM C AT PH 5.5
Authors : Fiedler, T.J.; Davey, C.A.; Fenna, R.E.
Deposited on : 1999-09-28
Resolution : 1.75 Å(reported)

This is a Full wwPDB X-ray Structure Validation Report for a publicly released PDB entry.

We welcome your comments at validation@mail.wwpdb.org

A user guide is available at

<https://www.wwpdb.org/validation/2017/XrayValidationReportHelp>

with specific help available everywhere you see the ⓘ symbol.

The types of validation reports are described at

<http://www.wwpdb.org/validation/2017/FAQs#types>.

The following versions of software and data (see [references ⓘ](#)) were used in the production of this report:

MolProbity : 4.02b-467
Mogul : 2022.3.0, CSD as543be (2022)
Xtrriage (Phenix) : 1.21
EDS : 3.0
buster-report : 1.1.7 (2018)
Percentile statistics : 20231227.v01 (using entries in the PDB archive December 27th 2023)
CCP4 : 9.0.004 (Gargrove)
Density-Fitness : 1.0.11
Ideal geometry (proteins) : Engh & Huber (2001)
Ideal geometry (DNA, RNA) : Parkinson et al. (1996)
Validation Pipeline (wwPDB-VP) : 2.40

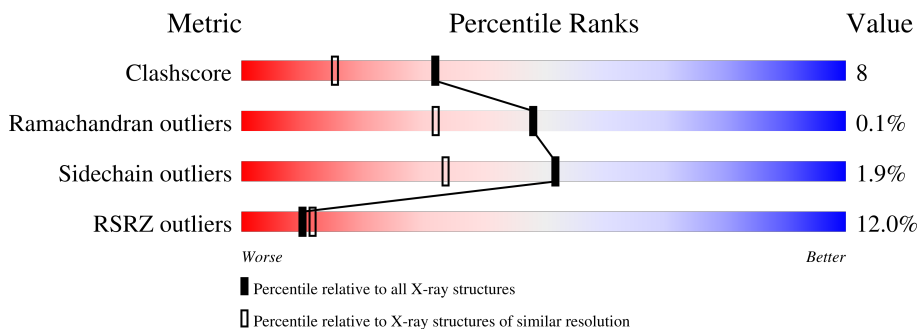
1 Overall quality at a glance

The following experimental techniques were used to determine the structure:

X-RAY DIFFRACTION

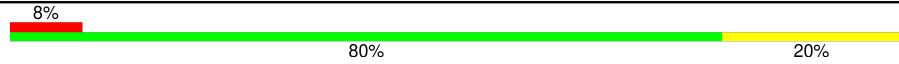
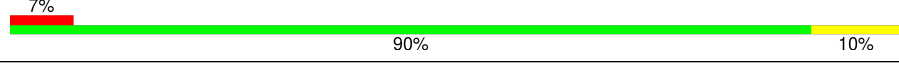


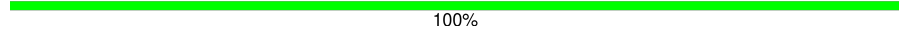

The reported resolution of this entry is 1.75 Å.

Percentile scores (ranging between 0-100) for global validation metrics of the entry are shown in the following graphic. The table shows the number of entries on which the scores are based.



Metric	Whole archive (#Entries)	Similar resolution (#Entries, resolution range(Å))
Clashscore	180529	3097 (1.76-1.76)
Ramachandran outliers	177936	3072 (1.76-1.76)
Sidechain outliers	177891	3072 (1.76-1.76)
RSRZ outliers	164620	2887 (1.76-1.76)

The table below summarises the geometric issues observed across the polymeric chains and their fit to the electron density. The red, orange, yellow and green segments of the lower bar indicate the fraction of residues that contain outliers for ≥ 3 , 2, 1 and 0 types of geometric quality criteria respectively. A grey segment represents the fraction of residues that are not modelled. The numeric value for each fraction is indicated below the corresponding segment, with a dot representing fractions $\leq 5\%$. The upper red bar (where present) indicates the fraction of residues that have poor fit to the electron density. The numeric value is given above the bar.

Mol	Chain	Length	Quality of chain
1	A	104	
1	B	104	
2	C	466	
2	D	466	
3	E	6	
3	F	6	

The following table lists non-polymeric compounds, carbohydrate monomers and non-standard residues in protein, DNA, RNA chains that are outliers for geometric or electron-density-fit criteria:

Mol	Type	Chain	Res	Chirality	Geometry	Clashes	Electron density
4	BR	A	602	-	-	X	-
9	ACT	C	608	-	-	X	-
9	ACT	D	608	-	-	X	-

2 Entry composition [i](#)

There are 10 unique types of molecules in this entry. The entry contains 10306 atoms, of which 0 are hydrogens and 0 are deuteriums.

In the tables below, the ZeroOcc column contains the number of atoms modelled with zero occupancy, the AltConf column contains the number of residues with at least one atom in alternate conformation and the Trace column contains the number of residues modelled with at most 2 atoms.

- Molecule 1 is a protein called MYELOPEROXIDASE.

Mol	Chain	Residues	Atoms					ZeroOcc	AltConf	Trace
			Total	C	N	O	S			
1	A	104	Total 838	C 529	N 148	O 156	S 5	0	0	0
1	B	104	Total 838	C 529	N 148	O 156	S 5	0	0	0

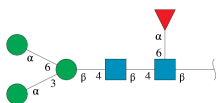
- Molecule 2 is a protein called MYELOPEROXIDASE.

Mol	Chain	Residues	Atoms					ZeroOcc	AltConf	Trace
			Total	C	N	O	S			
2	C	466	Total 3733	C 2351	N 687	O 668	S 27	0	0	0
2	D	466	Total 3733	C 2351	N 687	O 668	S 27	0	0	0

There are 2 discrepancies between the modelled and reference sequences:

Chain	Residue	Modelled	Actual	Comment	Reference
C	150	CSO	CYS	modified residue	UNP P05164
D	150	CSO	CYS	modified residue	UNP P05164

- Molecule 3 is an oligosaccharide called alpha-D-mannopyranose-(1-3)-[alpha-D-mannopyranose-(1-6)]beta-D-mannopyranose-(1-4)-2-acetamido-2-deoxy-beta-D-glucopyranose-(1-4)-[alpha-L-fucopyranose-(1-6)]2-acetamido-2-deoxy-beta-D-glucopyranose.

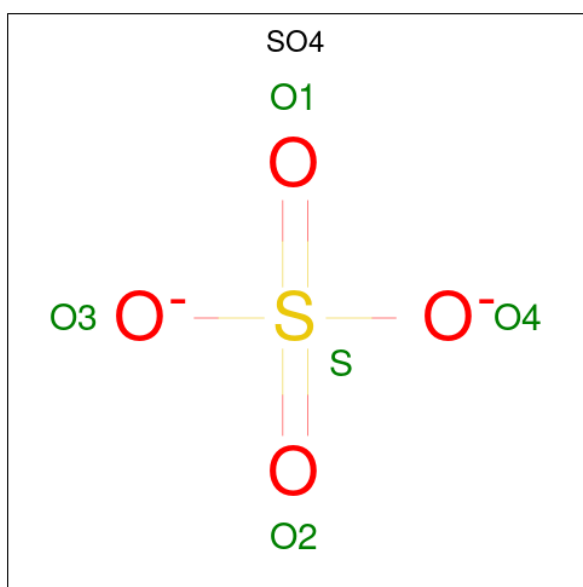


Mol	Chain	Residues	Atoms				ZeroOcc	AltConf	Trace
			Total	C	N	O			
3	E	6	Total 71	C 40	N 2	O 29	0	0	0
3	F	6	Total 71	C 40	N 2	O 29	0	0	0

- Molecule 4 is BROMIDE ION (three-letter code: BR) (formula: Br).

Mol	Chain	Residues	Atoms	ZeroOcc	AltConf
4	A	2	Total Br 2 2	0	0
4	C	2	Total Br 2 2	0	0
4	B	2	Total Br 2 2	0	0
4	D	2	Total Br 2 2	0	0

- Molecule 5 is SULFATE ION (three-letter code: SO4) (formula: O₄S).

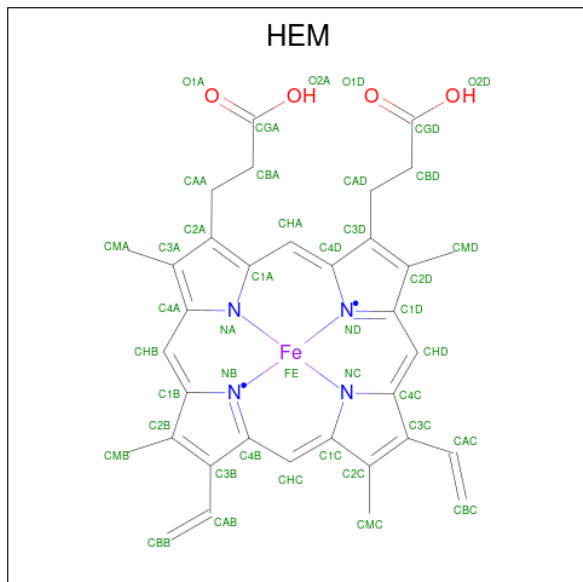


Mol	Chain	Residues	Atoms	ZeroOcc	AltConf
5	A	1	Total O S 5 4 1	0	0
5	C	1	Total O S 5 4 1	0	0
5	B	1	Total O S 5 4 1	0	0

- Molecule 6 is CALCIUM ION (three-letter code: CA) (formula: Ca).

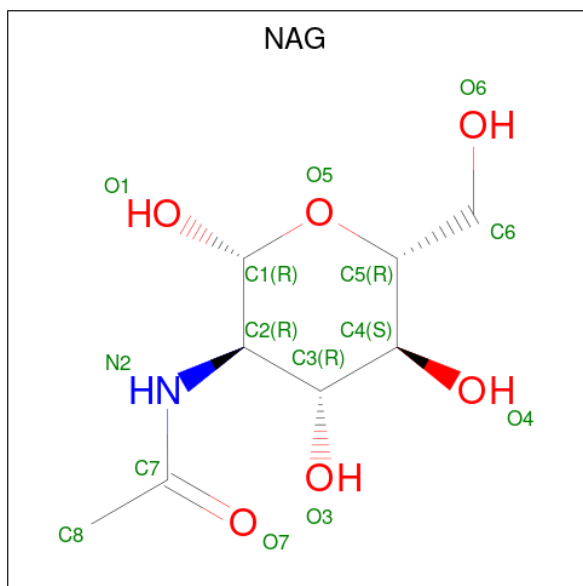
Mol	Chain	Residues	Atoms	ZeroOcc	AltConf
6	C	1	Total Ca 1 1	0	0
6	D	1	Total Ca 1 1	0	0

- Molecule 7 is PROTOPORPHYRIN IX CONTAINING FE (three-letter code: HEM) (formula: $C_{34}H_{32}FeN_4O_4$).



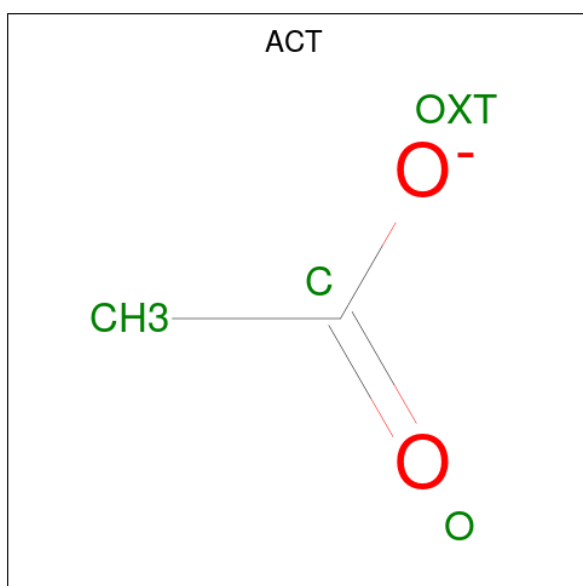
Mol	Chain	Residues	Atoms				ZeroOcc	AltConf	
7	C	1	Total	C	Fe	N	O	0	0
			43	34	1	4	4		
7	D	1	Total	C	Fe	N	O	0	0
			43	34	1	4	4		

- Molecule 8 is 2-acetamido-2-deoxy-beta-D-glucopyranose (three-letter code: NAG) (formula: $C_8H_{15}NO_6$).



Mol	Chain	Residues	Atoms				ZeroOcc	AltConf
8	C	1	Total	C	N	O	0	0
			14	8	1	5		
8	C	1	Total	C	N	O	0	0
			14	8	1	5		
8	D	1	Total	C	N	O	0	0
			14	8	1	5		
8	D	1	Total	C	N	O	0	0
			14	8	1	5		

- Molecule 9 is ACETATE ION (three-letter code: ACT) (formula: C₂H₃O₂).



Mol	Chain	Residues	Atoms			ZeroOcc	AltConf
9	C	1	Total	C	O	0	0
			4	2	2		
9	C	1	Total	C	O	0	0
			4	2	2		
9	C	1	Total	C	O	0	0
			4	2	2		
9	D	1	Total	C	O	0	0
			4	2	2		
9	D	1	Total	C	O	0	0
			4	2	2		
9	D	1	Total	C	O	0	0
			4	2	2		

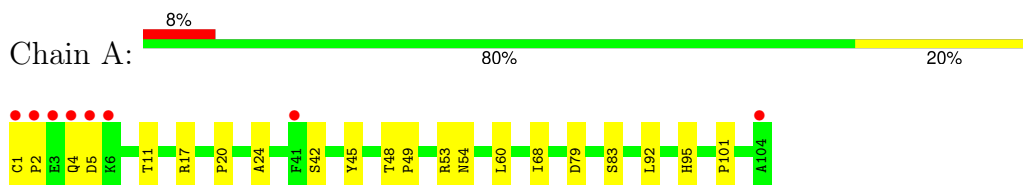
- Molecule 10 is water.

Mol	Chain	Residues	Atoms	ZeroOcc	AltConf
10	A	98	Total O 98 98	0	0
10	C	324	Total O 324 324	0	0
10	B	99	Total O 99 99	0	0
10	D	310	Total O 310 310	0	0

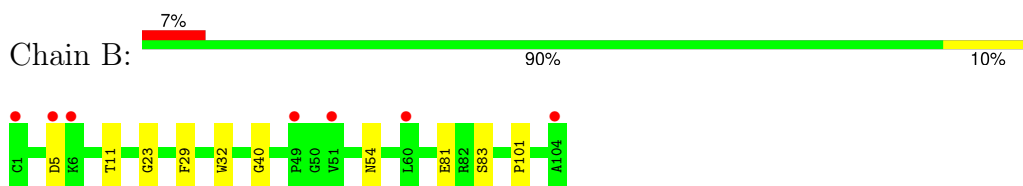
3 Residue-property plots [i](#)

These plots are drawn for all protein, RNA, DNA and oligosaccharide chains in the entry. The first graphic for a chain summarises the proportions of the various outlier classes displayed in the second graphic. The second graphic shows the sequence view annotated by issues in geometry and electron density. Residues are color-coded according to the number of geometric quality criteria for which they contain at least one outlier: green = 0, yellow = 1, orange = 2 and red = 3 or more. A red dot above a residue indicates a poor fit to the electron density ($RSRZ > 2$). Stretches of 2 or more consecutive residues without any outlier are shown as a green connector. Residues present in the sample, but not in the model, are shown in grey.

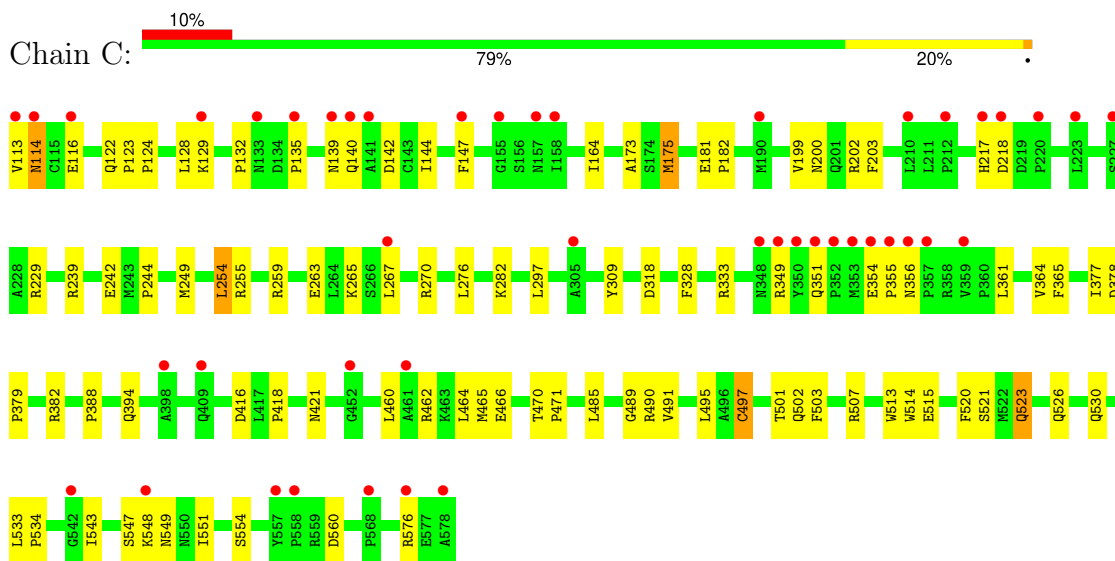
- Molecule 1: MYELOPEROXIDASE



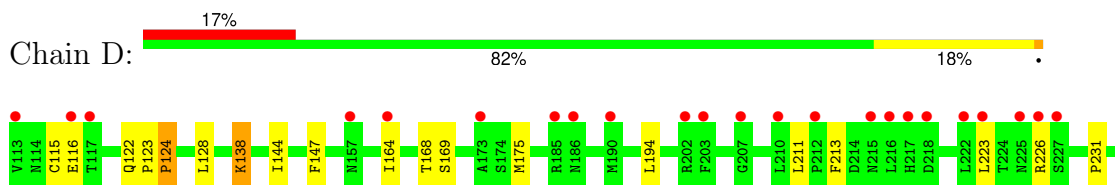
- Molecule 1: MYELOPEROXIDASE

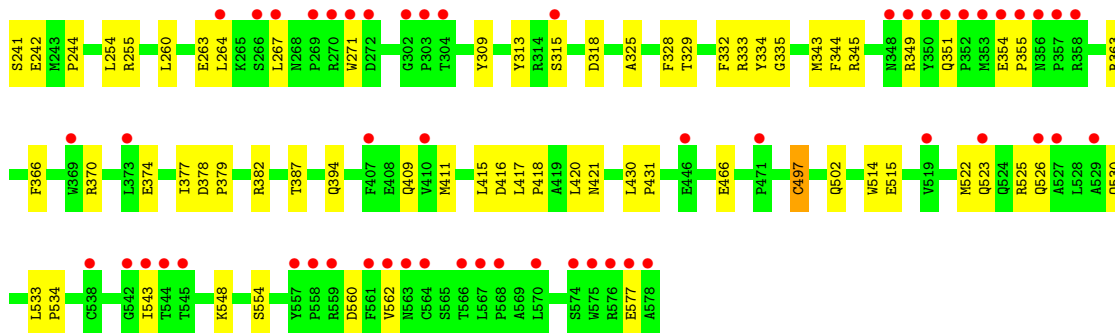


- Molecule 2: MYELOPEROXIDASE



- Molecule 2: MYELOPEROXIDASE





- Molecule 3: alpha-D-mannopyranose-(1-3)-[alpha-D-mannopyranose-(1-6)]beta-D-mannopyranose-(1-4)-2-acetamido-2-deoxy-beta-D-glucopyranose-(1-4)-[alpha-L-fucopyranose-(1-6)]2-acetamido-2-deoxy-beta-D-glucopyranose

Chain E: 100%

MAG1
MAG2
BMA3
MAN4
MAN5
FUC6

- Molecule 3: alpha-D-mannopyranose-(1-3)-[alpha-D-mannopyranose-(1-6)]beta-D-mannopyranose-(1-4)-2-acetamido-2-deoxy-beta-D-glucopyranose-(1-4)-[alpha-L-fucopyranose-(1-6)]2-acetamido-2-deoxy-beta-D-glucopyranose

Chain F: 50% 50%

MAG1
MAG2
BMA3
MAN4
MAN5
FUC6

4 Data and refinement statistics

Property	Value	Source
Space group	P 1 21 1	Depositor
Cell constants a, b, c, α , β , γ	111.16Å 63.49Å 92.48Å 90.00° 97.36° 90.00°	Depositor
Resolution (Å)	30.00 – 1.75 30.00 – 1.76	Depositor EDS
% Data completeness (in resolution range)	87.3 (30.00-1.75) 90.4 (30.00-1.76)	Depositor EDS
R_{merge}	0.06	Depositor
R_{sym}	(Not available)	Depositor
$\langle I/\sigma(I) \rangle$ ¹	4.37 (at 1.76Å)	Xtrriage
Refinement program	X-PLOR 3.851	Depositor
R, R_{free}	0.243 , 0.296 0.239 , (Not available)	Depositor DCC
R_{free} test set	No test flags present.	wwPDB-VP
Wilson B-factor (Å ²)	12.2	Xtrriage
Anisotropy	0.122	Xtrriage
Bulk solvent k_{sol} (e/Å ³), B_{sol} (Å ²)	0.41 , 60.3	EDS
L-test for twinning ²	$\langle L \rangle = 0.47$, $\langle L^2 \rangle = 0.30$	Xtrriage
Estimated twinning fraction	No twinning to report.	Xtrriage
F_o, F_c correlation	0.84	EDS
Total number of atoms	10306	wwPDB-VP
Average B, all atoms (Å ²)	10.0	wwPDB-VP

Xtrriage's analysis on translational NCS is as follows: *The largest off-origin peak in the Patterson function is 3.13% of the height of the origin peak. No significant pseudotranslation is detected.*

¹Intensities estimated from amplitudes.

²Theoretical values of $\langle |L| \rangle$, $\langle L^2 \rangle$ for acentric reflections are 0.5, 0.333 respectively for untwinned datasets, and 0.375, 0.2 for perfectly twinned datasets.

5 Model quality i

5.1 Standard geometry i

Bond lengths and bond angles in the following residue types are not validated in this section: CSO, ACT, FUC, CA, BR, NAG, BMA, MAN, SO4, HEM

The Z score for a bond length (or angle) is the number of standard deviations the observed value is removed from the expected value. A bond length (or angle) with $|Z| > 5$ is considered an outlier worth inspection. RMSZ is the root-mean-square of all Z scores of the bond lengths (or angles).

Mol	Chain	Bond lengths		Bond angles	
		RMSZ	# Z >5	RMSZ	# Z >5
1	A	0.75	0/863	0.73	0/1174
1	B	0.76	0/863	0.72	0/1174
2	C	0.73	1/3811 (0.0%)	0.65	0/5168
2	D	0.70	0/3811	0.63	0/5168
All	All	0.72	1/9348 (0.0%)	0.66	0/12684

All (1) bond length outliers are listed below:

Mol	Chain	Res	Type	Atoms	Z	Observed(Å)	Ideal(Å)
2	C	114	ASN	C-N	-6.21	1.19	1.34

There are no bond angle outliers.

There are no chirality outliers.

There are no planarity outliers.

5.2 Too-close contacts i

In the following table, the Non-H and H(model) columns list the number of non-hydrogen atoms and hydrogen atoms in the chain respectively. The H(added) column lists the number of hydrogen atoms added and optimized by MolProbity. The Clashes column lists the number of clashes within the asymmetric unit, whereas Symm-Clashes lists symmetry-related clashes.

Mol	Chain	Non-H	H(model)	H(added)	Clashes	Symm-Clashes
1	A	838	0	798	17	0
1	B	838	0	798	8	0
2	C	3733	0	3723	67	0
2	D	3733	0	3725	65	0
3	E	71	0	61	0	0
3	F	71	0	61	0	0

Continued on next page...

Continued from previous page...

Mol	Chain	Non-H	H(model)	H(added)	Clashes	Symm-Clashes
4	A	2	0	0	2	0
4	B	2	0	0	1	0
4	C	2	0	0	1	0
4	D	2	0	0	0	0
5	A	5	0	0	0	0
5	B	5	0	0	0	0
5	C	5	0	0	0	0
6	C	1	0	0	0	0
6	D	1	0	0	0	0
7	C	43	0	30	3	0
7	D	43	0	30	2	0
8	C	28	0	26	1	0
8	D	28	0	26	0	0
9	C	12	0	9	4	0
9	D	12	0	9	3	0
10	A	98	0	0	4	0
10	B	99	0	0	1	0
10	C	324	0	0	12	0
10	D	310	0	0	4	0
All	All	10306	0	9296	149	0

The all-atom clashscore is defined as the number of clashes found per 1000 atoms (including hydrogen atoms). The all-atom clashscore for this structure is 8.

All (149) close contacts within the same asymmetric unit are listed below, sorted by their clash magnitude.

Atom-1	Atom-2	Interatomic distance (Å)	Clash overlap (Å)
2:C:355:PRO:HG2	2:C:356:ASN:HD22	1.44	0.82
2:D:333:ARG:HH11	2:D:421:ASN:HD22	1.31	0.78
2:C:132:PRO:HG3	2:C:140:GLN:NE2	2.04	0.72
2:C:355:PRO:HG2	2:C:356:ASN:ND2	2.05	0.71
2:C:200:ASN:HD22	2:C:203:PHE:H	1.36	0.70
2:C:123:PRO:HB3	9:C:608:ACT:H3	1.74	0.69
2:D:122:GLN:HE21	2:D:122:GLN:HA	1.55	0.69
2:D:349:ARG:HG3	2:D:351:GLN:HG2	1.73	0.69
2:C:349:ARG:HG3	2:C:351:GLN:HG2	1.76	0.69
8:C:605:NAG:H5	10:C:916:HOH:O	1.92	0.68
2:D:211:LEU:HD23	2:D:254:LEU:HD22	1.76	0.66
2:D:333:ARG:HH11	2:D:421:ASN:ND2	1.94	0.65
10:A:714:HOH:O	2:C:129:LYS:HD3	1.98	0.64
2:D:128:LEU:HB2	2:D:144:ILE:HB	1.80	0.64

Continued on next page...

Continued from previous page...

Atom-1	Atom-2	Interatomic distance (Å)	Clash overlap (Å)
2:D:411:MET:HE2	2:D:415:LEU:HD21	1.80	0.63
2:C:514:TRP:CE2	2:C:515:GLU:HG3	2.33	0.63
1:B:5:ASP:HB3	10:B:793:HOH:O	1.99	0.62
2:D:548:LYS:HE2	2:D:562:VAL:HG13	1.83	0.61
2:C:242:GLU:OE1	7:C:604:HEM:HBB2	2.00	0.61
2:C:200:ASN:ND2	2:C:203:PHE:H	1.98	0.60
2:D:122:GLN:HA	2:D:122:GLN:NE2	2.17	0.59
4:A:602:BR:BR	2:C:242:GLU:HG3	2.57	0.59
2:D:263:GLU:HG3	10:D:829:HOH:O	2.02	0.58
1:A:2:PRO:HD2	10:A:753:HOH:O	2.04	0.58
2:D:522:MET:HG3	9:D:608:ACT:H1	1.84	0.58
2:D:122:GLN:HE21	2:D:123:PRO:CD	2.15	0.58
2:C:333:ARG:HH11	2:C:421:ASN:HD22	1.52	0.57
2:C:135:PRO:HG2	10:C:702:HOH:O	2.05	0.56
2:D:122:GLN:HE21	2:D:123:PRO:HD3	1.71	0.56
4:A:602:BR:BR	10:C:1017:HOH:O	2.73	0.56
2:C:354:GLU:HB3	2:C:355:PRO:HA	1.88	0.56
1:A:101:PRO:HB2	10:A:782:HOH:O	2.05	0.55
2:C:382:ARG:NH1	10:C:701:HOH:O	2.37	0.54
1:A:83:SER:HB3	2:C:554:SER:O	2.08	0.54
2:C:485:LEU:HD13	2:C:490:ARG:HA	1.88	0.53
2:C:128:LEU:HB2	2:C:144:ILE:HB	1.91	0.53
2:D:378:ASP:HB2	2:D:379:PRO:HD3	1.91	0.53
2:D:548:LYS:HE2	2:D:562:VAL:CG1	2.38	0.53
2:C:270:ARG:NH1	10:C:703:HOH:O	2.42	0.53
2:D:271:TRP:HE1	2:D:577:GLU:CD	2.12	0.52
2:D:382:ARG:HG3	2:D:543:ILE:CD1	2.39	0.52
2:D:411:MET:CE	2:D:415:LEU:HD21	2.40	0.51
2:D:138:LYS:HZ3	2:D:138:LYS:HA	1.76	0.51
2:D:417:LEU:HB3	2:D:418:PRO:HD3	1.92	0.51
1:B:83:SER:HB3	2:D:554:SER:O	2.10	0.51
2:C:113:VAL:HG12	2:C:114:ASN:N	2.26	0.51
2:C:521:SER:OG	2:C:523:GLN:HG2	2.10	0.51
2:C:114:ASN:HA	10:C:821:HOH:O	2.11	0.51
2:C:507:ARG:HG3	2:C:513:TRP:CE2	2.46	0.51
2:D:255:ARG:NH1	2:D:377:ILE:HD11	2.26	0.51
2:C:139:ASN:HB2	2:C:142:ASP:OD1	2.11	0.50
2:D:138:LYS:HA	2:D:138:LYS:NZ	2.25	0.50
2:D:328:PHE:CD1	2:D:502:GLN:HG2	2.46	0.50
2:D:244:PRO:HB2	2:D:343:MET:SD	2.51	0.50
2:C:465:MET:CE	2:C:471:PRO:HD3	2.42	0.49

Continued on next page...

Continued from previous page...

Atom-1	Atom-2	Interatomic distance (Å)	Clash overlap (Å)
7:C:604:HEM:HMC2	7:C:604:HEM:HBC2	1.94	0.49
2:D:116:GLU:OE1	2:D:411:MET:HE3	2.11	0.49
2:C:394:GLN:HB3	2:C:460:LEU:HD22	1.93	0.49
2:D:416:ASP:O	2:D:420:LEU:HG	2.11	0.49
2:C:548:LYS:HD2	2:C:560:ASP:HA	1.94	0.49
1:A:20:PRO:HG2	1:B:40:GLY:HA3	1.95	0.48
1:A:92:LEU:HD22	2:C:249:MET:HB3	1.96	0.48
1:A:17:ARG:HB3	10:A:785:HOH:O	2.13	0.48
2:D:416:ASP:OD2	2:D:418:PRO:HD2	2.13	0.48
2:C:549:ASN:HB3	10:C:921:HOH:O	2.13	0.48
2:C:116:GLU:HG3	2:C:147:PHE:CZ	2.48	0.47
2:C:549:ASN:ND2	10:C:709:HOH:O	2.46	0.47
2:D:514:TRP:CE2	2:D:515:GLU:HG3	2.49	0.47
2:D:213:PHE:CD2	2:D:231:PRO:HG2	2.50	0.47
2:D:554:SER:HB3	2:D:560:ASP:HB3	1.95	0.47
2:C:173:ALA:HA	2:C:175:MET:SD	2.55	0.47
2:D:548:LYS:HG2	2:D:562:VAL:HG13	1.96	0.47
2:D:354:GLU:HB3	2:D:355:PRO:HA	1.97	0.47
2:C:123:PRO:CB	9:C:608:ACT:H3	2.42	0.46
2:D:394:GLN:HG3	10:D:842:HOH:O	2.15	0.46
2:C:462:ARG:O	2:C:466:GLU:HG2	2.15	0.46
2:D:345:ARG:NH1	10:D:709:HOH:O	2.48	0.46
2:D:378:ASP:O	2:D:543:ILE:HD11	2.15	0.46
2:C:333:ARG:HD3	2:C:421:ASN:ND2	2.30	0.46
2:C:361:LEU:O	2:C:364:VAL:HG22	2.16	0.46
2:C:543:ILE:HG23	4:C:602:BR:BR	2.70	0.46
2:D:533:LEU:HB3	2:D:534:PRO:HD3	1.98	0.46
2:C:297:LEU:HD11	2:C:503:PHE:CD1	2.51	0.46
1:B:32:TRP:CE2	2:D:325:ALA:HB2	2.51	0.46
1:A:1:CYS:SG	1:A:20:PRO:HB3	2.56	0.45
2:C:181:GLU:HB2	2:C:182:PRO:HD3	1.98	0.45
2:C:200:ASN:ND2	2:C:202:ARG:H	2.14	0.45
2:D:260:LEU:O	2:D:264:LEU:HG	2.17	0.45
2:C:416:ASP:OD2	2:C:418:PRO:HD2	2.15	0.45
2:D:115:CYS:HB2	2:D:147:PHE:CZ	2.51	0.45
2:C:255:ARG:NH1	2:C:377:ILE:HD11	2.32	0.45
2:D:122:GLN:HE21	2:D:122:GLN:CA	2.25	0.45
2:D:123:PRO:HA	2:D:124:PRO:HA	1.83	0.45
2:C:199:VAL:HG12	2:C:254:LEU:HD21	1.99	0.45
2:D:223:LEU:HD22	2:D:226:ARG:NH1	2.31	0.45
2:C:491:VAL:HB	2:C:495:LEU:HB2	1.99	0.45

Continued on next page...

Continued from previous page...

Atom-1	Atom-2	Interatomic distance (Å)	Clash overlap (Å)
2:C:265:LYS:HD3	2:C:276:LEU:HD11	1.98	0.44
7:C:604:HEM:HBC2	7:C:604:HEM:CMC	2.46	0.44
2:C:135:PRO:CG	10:C:702:HOH:O	2.63	0.44
1:A:45:TYR:CE1	1:A:53:ARG:HG3	2.53	0.44
2:D:241:SER:O	2:D:366:PHE:HA	2.18	0.44
2:C:259:ARG:O	2:C:263:GLU:HG3	2.17	0.44
2:C:378:ASP:HB2	2:C:379:PRO:HD3	2.00	0.44
2:C:513:TRP:CD1	2:C:515:GLU:HB2	2.53	0.43
2:D:533:LEU:N	2:D:534:PRO:CD	2.81	0.43
4:B:602:BR:BR	2:D:242:GLU:HG3	2.74	0.43
2:C:229:ARG:HG2	2:C:229:ARG:HH11	1.84	0.43
1:B:101:PRO:HD2	2:D:164:ILE:O	2.19	0.43
1:A:68:ILE:HD13	2:C:464:LEU:HD23	2.00	0.43
1:A:101:PRO:HD2	2:C:164:ILE:O	2.18	0.43
2:D:194:LEU:HD13	10:D:954:HOH:O	2.18	0.43
1:A:79:ASP:O	2:C:388:PRO:HB3	2.19	0.43
2:D:526:GLN:NE2	2:D:530:GLN:HE21	2.17	0.43
2:C:124:PRO:HA	9:C:608:ACT:H1	2.00	0.43
2:C:244:PRO:HD3	2:C:364:VAL:O	2.18	0.43
2:D:335:GLY:HA3	7:D:604:HEM:CBC	2.48	0.43
1:B:23:GLY:HA2	2:D:169:SER:OG	2.19	0.42
2:C:533:LEU:HB3	2:C:534:PRO:HD3	2.01	0.42
2:C:501:THR:HA	10:C:973:HOH:O	2.19	0.42
1:A:45:TYR:CZ	1:A:53:ARG:HG3	2.55	0.42
2:C:282:LYS:HG2	2:C:520:PHE:CZ	2.54	0.42
2:D:344:PHE:CD1	2:D:387:THR:HG21	2.55	0.42
2:C:242:GLU:O	2:C:365:PHE:HA	2.20	0.42
2:C:526:GLN:NE2	2:C:530:GLN:NE2	2.68	0.42
2:D:313:TYR:CZ	2:D:315:SER:HA	2.54	0.42
2:D:116:GLU:OE2	2:D:411:MET:HB2	2.20	0.42
2:D:242:GLU:OE1	7:D:604:HEM:HBB2	2.20	0.42
9:C:608:ACT:H2	10:C:903:HOH:O	2.19	0.41
1:B:11:THR:O	2:D:168:THR:HG22	2.20	0.41
2:D:332:PHE:C	2:D:334:TYR:H	2.24	0.41
1:A:4:GLN:HG2	1:A:5:ASP:N	2.35	0.41
2:D:430:LEU:HA	2:D:431:PRO:HD3	1.97	0.41
2:C:547:SER:HB2	2:C:551:ILE:HG13	2.03	0.41
1:A:48:THR:HA	1:A:49:PRO:HD3	1.92	0.41
1:A:11:THR:O	1:A:24:ALA:HA	2.20	0.41
1:B:29:PHE:CZ	2:D:329:THR:HG21	2.56	0.41
2:D:309:TYR:CZ	2:D:497:CYS:HA	2.55	0.41

Continued on next page...

Continued from previous page...

Atom-1	Atom-2	Interatomic distance (Å)	Clash overlap (Å)
1:A:60:LEU:N	1:A:60:LEU:HD12	2.36	0.41
1:A:95:HIS:CD2	2:C:239:ARG:CZ	3.04	0.41
2:D:525:ARG:HH21	9:D:608:ACT:CH3	2.33	0.41
2:C:267:LEU:HD12	2:C:576:ARG:HB2	2.03	0.40
2:C:270:ARG:CZ	10:C:703:HOH:O	2.69	0.40
2:C:309:TYR:CZ	2:C:497:CYS:HA	2.56	0.40
2:C:328:PHE:CD1	2:C:502:GLN:HG2	2.56	0.40
2:C:489:GLY:O	2:C:490:ARG:HD3	2.21	0.40
2:D:363:ARG:HG2	2:D:409:GLN:NE2	2.36	0.40
2:D:370:ARG:O	2:D:374:GLU:HB2	2.21	0.40
2:D:525:ARG:HH21	9:D:608:ACT:C	2.34	0.40
2:D:466:GLU:O	2:D:466:GLU:HG2	2.22	0.40

There are no symmetry-related clashes.

5.3 Torsion angles [i](#)

5.3.1 Protein backbone [i](#)

In the following table, the Percentiles column shows the percent Ramachandran outliers of the chain as a percentile score with respect to all X-ray entries followed by that with respect to entries of similar resolution.

The Analysed column shows the number of residues for which the backbone conformation was analysed, and the total number of residues.

Mol	Chain	Analysed	Favoured	Allowed	Outliers	Percentiles	
1	A	102/104 (98%)	100 (98%)	1 (1%)	1 (1%)	13	3
1	B	102/104 (98%)	100 (98%)	2 (2%)	0	100	100
2	C	463/466 (99%)	445 (96%)	18 (4%)	0	100	100
2	D	463/466 (99%)	449 (97%)	14 (3%)	0	100	100
All	All	1130/1140 (99%)	1094 (97%)	35 (3%)	1 (0%)	48	32

All (1) Ramachandran outliers are listed below:

Mol	Chain	Res	Type
1	A	42	SER

5.3.2 Protein sidechains [i](#)

In the following table, the Percentiles column shows the percent sidechain outliers of the chain as a percentile score with respect to all X-ray entries followed by that with respect to entries of similar resolution.

The Analysed column shows the number of residues for which the sidechain conformation was analysed, and the total number of residues.

Mol	Chain	Analysed	Rotameric	Outliers	Percentiles	
1	A	90/90 (100%)	89 (99%)	1 (1%)	70	58
1	B	90/90 (100%)	88 (98%)	2 (2%)	47	27
2	C	410/410 (100%)	401 (98%)	9 (2%)	47	27
2	D	410/410 (100%)	403 (98%)	7 (2%)	56	39
All	All	1000/1000 (100%)	981 (98%)	19 (2%)	52	34

All (19) residues with a non-rotameric sidechain are listed below:

Mol	Chain	Res	Type
1	A	54	ASN
2	C	122	GLN
2	C	175	MET
2	C	217	HIS
2	C	218	ASP
2	C	254	LEU
2	C	318	ASP
2	C	470	THR
2	C	497	CYS
2	C	523	GLN
1	B	54	ASN
1	B	81	GLU
2	D	124	PRO
2	D	138	LYS
2	D	175	MET
2	D	267	LEU
2	D	318	ASP
2	D	497	CYS
2	D	523	GLN

Sometimes sidechains can be flipped to improve hydrogen bonding and reduce clashes. All (15) such sidechains are listed below:

Mol	Chain	Res	Type
1	A	54	ASN
2	C	140	GLN
2	C	200	ASN
2	C	201	GLN
2	C	356	ASN
2	C	526	GLN
2	C	530	GLN
2	C	549	ASN
1	B	54	ASN
2	D	122	GLN
2	D	133	ASN
2	D	140	GLN
2	D	421	ASN
2	D	526	GLN
2	D	549	ASN

5.3.3 RNA [i](#)

There are no RNA molecules in this entry.

5.4 Non-standard residues in protein, DNA, RNA chains [i](#)

2 non-standard protein/DNA/RNA residues are modelled in this entry.

In the following table, the Counts columns list the number of bonds (or angles) for which Mogul statistics could be retrieved, the number of bonds (or angles) that are observed in the model and the number of bonds (or angles) that are defined in the Chemical Component Dictionary. The Link column lists molecule types, if any, to which the group is linked. The Z score for a bond length (or angle) is the number of standard deviations the observed value is removed from the expected value. A bond length (or angle) with $|Z| > 2$ is considered an outlier worth inspection. RMSZ is the root-mean-square of all Z scores of the bond lengths (or angles).

Mol	Type	Chain	Res	Link	Bond lengths			Bond angles		
					Counts	RMSZ	$\# Z > 2$	Counts	RMSZ	$\# Z > 2$
2	CSO	D	150	2	3,6,7	0.92	0	1,6,8	0.90	0
2	CSO	C	150	2	3,6,7	0.77	0	1,6,8	0.80	0

In the following table, the Chirals column lists the number of chiral outliers, the number of chiral centers analysed, the number of these observed in the model and the number defined in the Chemical Component Dictionary. Similar counts are reported in the Torsion and Rings columns. '-' means no outliers of that kind were identified.

Mol	Type	Chain	Res	Link	Chirals	Torsions	Rings
2	CSO	D	150	2	-	0/1/5/7	-
2	CSO	C	150	2	-	0/1/5/7	-

There are no bond length outliers.

There are no bond angle outliers.

There are no chirality outliers.

There are no torsion outliers.

There are no ring outliers.

No monomer is involved in short contacts.

5.5 Carbohydrates [i](#)

12 monosaccharides are modelled in this entry.

In the following table, the Counts columns list the number of bonds (or angles) for which Mogul statistics could be retrieved, the number of bonds (or angles) that are observed in the model and the number of bonds (or angles) that are defined in the Chemical Component Dictionary. The Link column lists molecule types, if any, to which the group is linked. The Z score for a bond length (or angle) is the number of standard deviations the observed value is removed from the expected value. A bond length (or angle) with $|Z| > 2$ is considered an outlier worth inspection. RMSZ is the root-mean-square of all Z scores of the bond lengths (or angles).

Mol	Type	Chain	Res	Link	Bond lengths			Bond angles		
					Counts	RMSZ	# Z > 2	Counts	RMSZ	# Z > 2
3	NAG	E	1	2,3	14,14,15	0.85	0	17,19,21	0.96	0
3	NAG	E	2	3	14,14,15	0.76	0	17,19,21	0.83	0
3	BMA	E	3	3	11,11,12	0.69	0	15,15,17	0.56	0
3	MAN	E	4	3	11,11,12	0.64	0	15,15,17	0.81	0
3	MAN	E	5	3	11,11,12	0.57	0	15,15,17	0.67	0
3	FUC	E	6	3	10,10,11	0.69	0	14,14,16	0.53	0
3	NAG	F	1	2,3	14,14,15	0.71	0	17,19,21	1.19	1 (5%)
3	NAG	F	2	3	14,14,15	0.88	0	17,19,21	0.96	1 (5%)
3	BMA	F	3	3	11,11,12	0.82	0	15,15,17	0.52	0
3	MAN	F	4	3	11,11,12	0.79	0	15,15,17	0.96	1 (6%)
3	MAN	F	5	3	11,11,12	0.77	0	15,15,17	0.68	0
3	FUC	F	6	3	10,10,11	0.94	0	14,14,16	0.56	0

In the following table, the Chirals column lists the number of chiral outliers, the number of chiral centers analysed, the number of these observed in the model and the number defined in the Chemical Component Dictionary. Similar counts are reported in the Torsion and Rings columns. '-' means no outliers of that kind were identified.

Mol	Type	Chain	Res	Link	Chirals	Torsions	Rings
3	NAG	E	1	2,3	-	0/6/23/26	0/1/1/1
3	NAG	E	2	3	-	0/6/23/26	0/1/1/1
3	BMA	E	3	3	-	0/2/19/22	0/1/1/1
3	MAN	E	4	3	-	0/2/19/22	0/1/1/1
3	MAN	E	5	3	-	0/2/19/22	0/1/1/1
3	FUC	E	6	3	-	-	0/1/1/1
3	NAG	F	1	2,3	-	0/6/23/26	0/1/1/1
3	NAG	F	2	3	-	0/6/23/26	0/1/1/1
3	BMA	F	3	3	-	0/2/19/22	0/1/1/1
3	MAN	F	4	3	-	0/2/19/22	0/1/1/1
3	MAN	F	5	3	-	2/2/19/22	0/1/1/1
3	FUC	F	6	3	-	-	0/1/1/1

There are no bond length outliers.

All (3) bond angle outliers are listed below:

Mol	Chain	Res	Type	Atoms	Z	Observed(°)	Ideal(°)
3	F	1	NAG	C2-N2-C7	-3.30	118.48	122.90
3	F	4	MAN	C1-O5-C5	3.06	116.28	112.19
3	F	2	NAG	C2-N2-C7	-2.84	119.09	122.90

There are no chirality outliers.

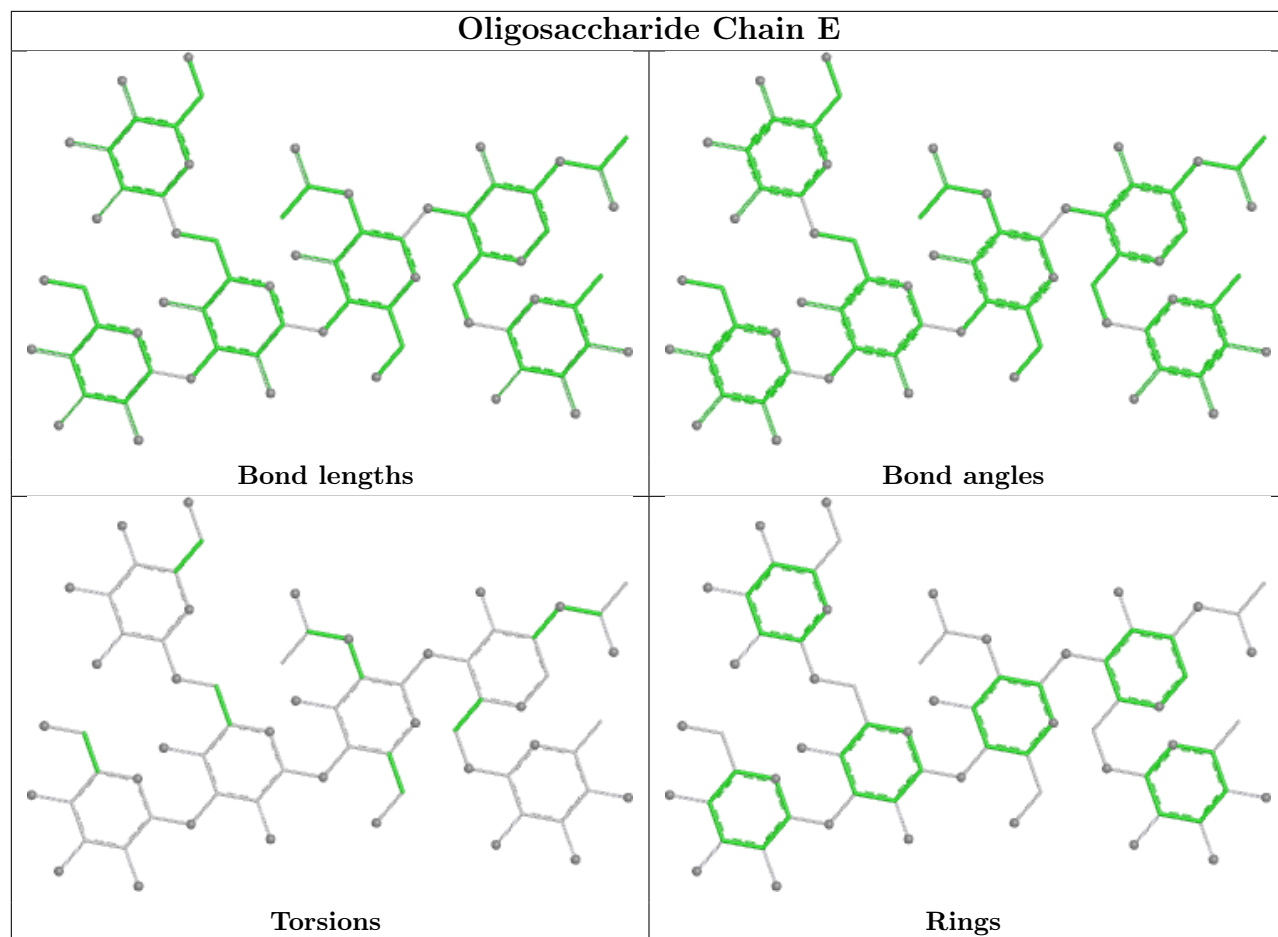
All (2) torsion outliers are listed below:

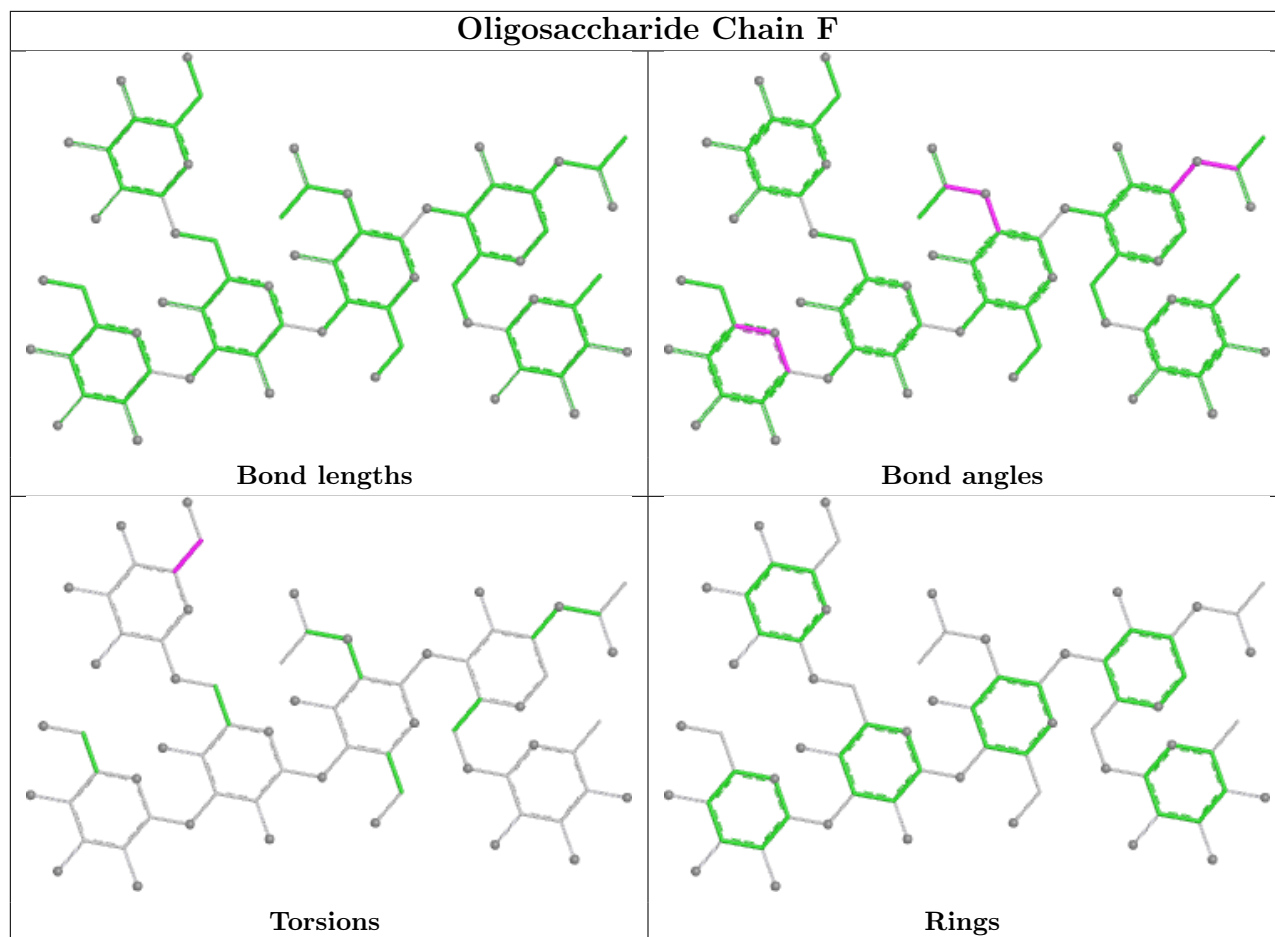
Mol	Chain	Res	Type	Atoms
3	F	5	MAN	O5-C5-C6-O6
3	F	5	MAN	C4-C5-C6-O6

There are no ring outliers.

No monomer is involved in short contacts.

The following is a two-dimensional graphical depiction of Mogul quality analysis of bond lengths, bond angles, torsion angles, and ring geometry for oligosaccharide.





5.6 Ligand geometry [i](#)

Of 25 ligands modelled in this entry, 10 are monoatomic - leaving 15 for Mogul analysis.

In the following table, the Counts columns list the number of bonds (or angles) for which Mogul statistics could be retrieved, the number of bonds (or angles) that are observed in the model and the number of bonds (or angles) that are defined in the Chemical Component Dictionary. The Link column lists molecule types, if any, to which the group is linked. The Z score for a bond length (or angle) is the number of standard deviations the observed value is removed from the expected value. A bond length (or angle) with $|Z| > 2$ is considered an outlier worth inspection. RMSZ is the root-mean-square of all Z scores of the bond lengths (or angles).

Mol	Type	Chain	Res	Link	Bond lengths			Bond angles		
					Counts	RMSZ	# Z > 2	Counts	RMSZ	# Z > 2
8	NAG	C	606	2	14,14,15	0.55	0	17,19,21	0.84	0
5	SO4	B	603	-	4,4,4	0.40	0	6,6,6	0.08	0
9	ACT	C	610	-	3,3,3	1.32	0	3,3,3	1.59	1 (33%)
8	NAG	D	606	2	14,14,15	0.80	0	17,19,21	1.10	2 (11%)
8	NAG	D	605	2	14,14,15	0.55	0	17,19,21	0.76	0
8	NAG	C	605	2	14,14,15	0.66	0	17,19,21	1.12	1 (5%)

Mol	Type	Chain	Res	Link	Bond lengths			Bond angles		
					Counts	RMSZ	# Z > 2	Counts	RMSZ	# Z > 2
5	SO4	C	607	-	4,4,4	0.36	0	6,6,6	0.12	0
9	ACT	C	609	-	3,3,3	1.09	0	3,3,3	1.72	1 (33%)
9	ACT	D	608	-	3,3,3	1.45	1 (33%)	3,3,3	1.67	1 (33%)
9	ACT	D	609	-	3,3,3	1.34	1 (33%)	3,3,3	1.61	1 (33%)
7	HEM	C	604	10,2	42,50,50	1.39	7 (16%)	46,82,82	1.23	4 (8%)
9	ACT	D	607	-	3,3,3	1.16	0	3,3,3	1.69	1 (33%)
5	SO4	A	603	-	4,4,4	0.26	0	6,6,6	0.20	0
9	ACT	C	608	-	3,3,3	1.43	1 (33%)	3,3,3	1.61	1 (33%)
7	HEM	D	604	10,2	42,50,50	1.47	7 (16%)	46,82,82	1.21	3 (6%)

In the following table, the Chirals column lists the number of chiral outliers, the number of chiral centers analysed, the number of these observed in the model and the number defined in the Chemical Component Dictionary. Similar counts are reported in the Torsion and Rings columns. '-' means no outliers of that kind were identified.

Mol	Type	Chain	Res	Link	Chirals	Torsions	Rings
8	NAG	C	606	2	-	0/6/23/26	0/1/1/1
8	NAG	D	606	2	-	1/6/23/26	0/1/1/1
8	NAG	D	605	2	-	0/6/23/26	0/1/1/1
8	NAG	C	605	2	-	2/6/23/26	0/1/1/1
7	HEM	C	604	10,2	-	4/12/54/54	-
7	HEM	D	604	10,2	-	5/12/54/54	-

All (17) bond length outliers are listed below:

Mol	Chain	Res	Type	Atoms	Z	Observed(Å)	Ideal(Å)
7	D	604	HEM	C3C-C4C	3.53	1.46	1.41
7	C	604	HEM	C3C-CAC	-3.51	1.39	1.47
7	D	604	HEM	CBB-CAB	3.30	1.46	1.30
7	C	604	HEM	CBB-CAB	3.18	1.45	1.30
7	D	604	HEM	CBD-CGD	3.09	1.57	1.50
7	D	604	HEM	CBC-CAC	2.66	1.46	1.29
7	C	604	HEM	CAB-C3B	-2.64	1.40	1.47
7	C	604	HEM	CBC-CAC	2.34	1.43	1.29
9	C	608	ACT	O-C	2.30	1.32	1.22
9	D	608	ACT	O-C	2.26	1.32	1.22
7	C	604	HEM	CMD-C2D	2.26	1.55	1.50
7	C	604	HEM	C3C-C4C	2.24	1.44	1.41
7	D	604	HEM	CAB-C3B	-2.10	1.41	1.47
7	D	604	HEM	C3C-CAC	-2.05	1.42	1.47

Continued on next page...

Continued from previous page...

Mol	Chain	Res	Type	Atoms	Z	Observed(Å)	Ideal(Å)
9	D	609	ACT	O-C	2.03	1.31	1.22
7	D	604	HEM	C3C-C2C	-2.03	1.37	1.40
7	C	604	HEM	CHB-C1B	2.00	1.39	1.34

All (16) bond angle outliers are listed below:

Mol	Chain	Res	Type	Atoms	Z	Observed(°)	Ideal(°)
7	C	604	HEM	C3B-C4B-NB	4.06	112.38	109.47
7	D	604	HEM	C3B-C4B-NB	3.57	112.03	109.47
8	D	606	NAG	C1-C2-N2	-2.74	106.12	110.43
8	C	605	NAG	C2-N2-C7	-2.62	119.39	122.90
7	D	604	HEM	C4C-CHD-C1D	2.43	125.77	122.56
9	C	609	ACT	O-C-CH3	-2.36	112.85	122.53
7	C	604	HEM	C4C-CHD-C1D	2.34	125.65	122.56
9	D	607	ACT	O-C-CH3	-2.31	113.06	122.53
8	D	606	NAG	C1-O5-C5	-2.30	109.10	112.19
9	D	608	ACT	O-C-CH3	-2.26	113.26	122.53
7	C	604	HEM	C3D-C4D-ND	2.22	112.60	110.17
9	D	609	ACT	O-C-CH3	-2.21	113.47	122.53
9	C	610	ACT	O-C-CH3	-2.19	113.56	122.53
9	C	608	ACT	O-C-CH3	-2.17	113.64	122.53
7	C	604	HEM	C4B-CHC-C1C	2.04	125.25	122.56
7	D	604	HEM	C3D-C4D-ND	2.03	112.40	110.17

There are no chirality outliers.

All (12) torsion outliers are listed below:

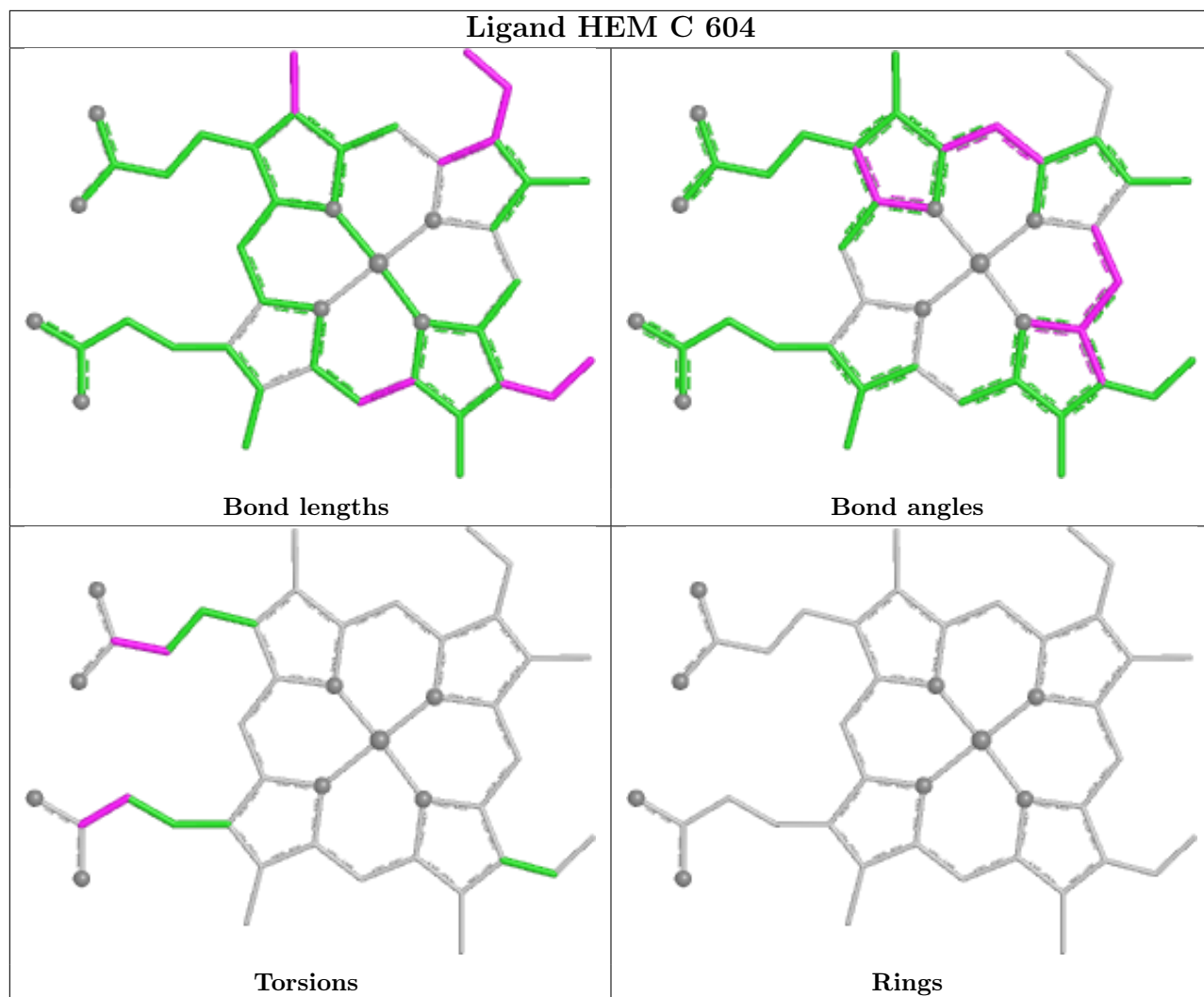
Mol	Chain	Res	Type	Atoms
8	C	605	NAG	O5-C5-C6-O6
8	C	605	NAG	C4-C5-C6-O6
8	D	606	NAG	C4-C5-C6-O6
7	D	604	HEM	CAD-CBD-CGD-O2D
7	D	604	HEM	CAD-CBD-CGD-O1D
7	C	604	HEM	CAA-CBA-CGA-O2A
7	C	604	HEM	CAA-CBA-CGA-O1A
7	C	604	HEM	CAD-CBD-CGD-O1D
7	C	604	HEM	CAD-CBD-CGD-O2D
7	D	604	HEM	C2B-C3B-CAB-CBB
7	D	604	HEM	CAA-CBA-CGA-O1A
7	D	604	HEM	CAA-CBA-CGA-O2A

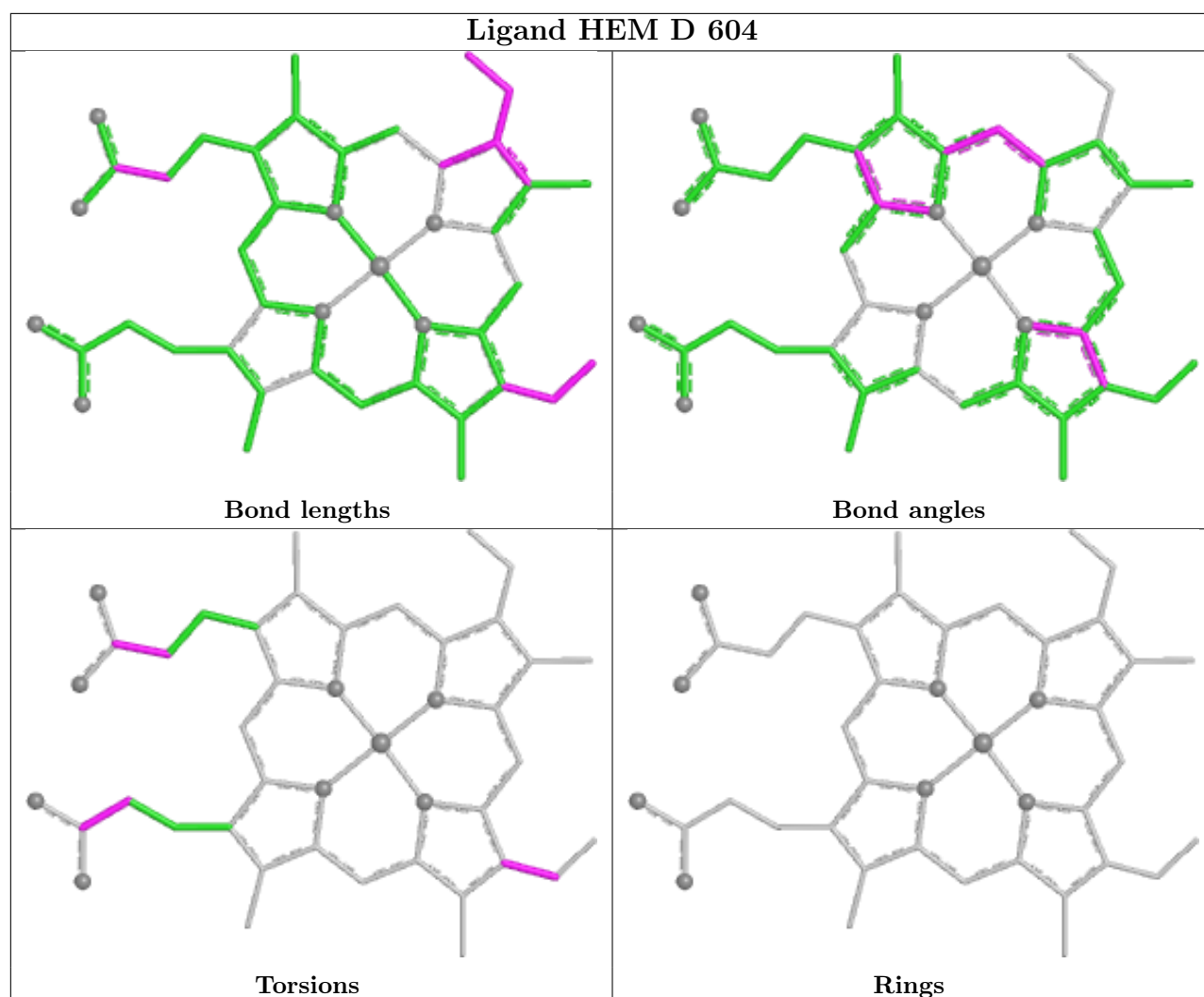
There are no ring outliers.

5 monomers are involved in 13 short contacts:

Mol	Chain	Res	Type	Clashes	Symm-Clashes
8	C	605	NAG	1	0
9	D	608	ACT	3	0
7	C	604	HEM	3	0
9	C	608	ACT	4	0
7	D	604	HEM	2	0

The following is a two-dimensional graphical depiction of Mogul quality analysis of bond lengths, bond angles, torsion angles, and ring geometry for all instances of the Ligand of Interest. In addition, ligands with molecular weight > 250 and outliers as shown on the validation Tables will also be included. For torsion angles, if less than 5% of the Mogul distribution of torsion angles is within 10 degrees of the torsion angle in question, then that torsion angle is considered an outlier. Any bond that is central to one or more torsion angles identified as an outlier by Mogul will be highlighted in the graph. For rings, the root-mean-square deviation (RMSD) between the ring in question and similar rings identified by Mogul is calculated over all ring torsion angles. If the average RMSD is greater than 60 degrees and the minimal RMSD between the ring in question and any Mogul-identified rings is also greater than 60 degrees, then that ring is considered an outlier. The outliers are highlighted in purple. The color gray indicates Mogul did not find sufficient equivalents in the CSD to analyse the geometry.





5.7 Other polymers [i](#)

There are no such residues in this entry.

5.8 Polymer linkage issues [i](#)

The following chains have linkage breaks:

Mol	Chain	Number of breaks
2	C	1

All chain breaks are listed below:

Model	Chain	Residue-1	Atom-1	Residue-2	Atom-2	Distance (Å)
1	C	114:ASN	C	115:CYS	N	1.19

6 Fit of model and data

6.1 Protein, DNA and RNA chains

In the following table, the column labelled ‘#RSRZ > 2’ contains the number (and percentage) of RSRZ outliers, followed by percent RSRZ outliers for the chain as percentile scores relative to all X-ray entries and entries of similar resolution. The OWAB column contains the minimum, median, 95th percentile and maximum values of the occupancy-weighted average B-factor per residue. The column labelled ‘Q < 0.9’ lists the number of (and percentage) of residues with an average occupancy less than 0.9.

Mol	Chain	Analysed	<RSRZ>	#RSRZ>2	OWAB(Å ²)	Q<0.9
1	A	104/104 (100%)	0.74	8 (7%) 21 24	2, 6, 17, 43	0
1	B	104/104 (100%)	0.64	7 (6%) 25 28	3, 7, 15, 23	0
2	C	465/466 (99%)	0.78	45 (9%) 15 17	2, 7, 19, 35	0
2	D	465/466 (99%)	1.05	77 (16%) 5 6	3, 9, 24, 41	0
All	All	1138/1140 (99%)	0.88	137 (12%) 10 12	2, 8, 22, 43	0

All (137) RSRZ outliers are listed below:

Mol	Chain	Res	Type	RSRZ
2	C	113	VAL	10.8
2	D	218	ASP	5.6
1	A	2	PRO	5.5
2	D	217	HIS	5.2
2	D	355	PRO	5.0
2	D	578	ALA	4.8
2	D	113	VAL	4.7
1	A	4	GLN	4.6
2	D	568	PRO	4.4
2	D	349	ARG	4.4
2	D	351	GLN	4.3
2	D	562	VAL	4.3
2	C	190	MET	4.2
2	C	353	MET	4.2
1	A	3	GLU	4.1
2	D	157	ASN	4.1
2	D	352	PRO	4.1
2	C	223	LEU	4.1
2	D	576	ARG	3.9
2	D	570	LEU	3.9
2	C	133	ASN	3.8

Continued on next page...

Continued from previous page...

Mol	Chain	Res	Type	RSRZ
2	C	355	PRO	3.8
2	D	353	MET	3.8
2	D	348	ASN	3.7
2	C	352	PRO	3.7
2	C	139	ASN	3.7
2	C	158	ILE	3.6
2	C	578	ALA	3.6
2	C	217	HIS	3.6
2	D	558	PRO	3.6
2	D	226	ARG	3.6
2	D	216	LEU	3.4
2	D	543	ILE	3.4
2	C	114	ASN	3.4
2	C	218	ASP	3.4
2	D	266	SER	3.3
2	D	272	ASP	3.3
2	D	190	MET	3.3
2	D	356	ASN	3.2
2	C	267	LEU	3.2
2	D	354	GLU	3.2
2	C	354	GLU	3.2
2	D	267	LEU	3.2
2	D	185	ARG	3.2
2	D	575	TRP	3.2
2	C	157	ASN	3.1
2	D	358	ARG	3.1
2	D	527	ALA	3.1
2	C	155	GLY	3.0
2	D	471	PRO	3.0
2	D	202	ARG	3.0
2	D	227	SER	2.9
2	C	147	PHE	2.9
2	D	117	THR	2.9
1	A	1	CYS	2.9
1	A	41	PHE	2.9
2	C	140	GLN	2.9
2	D	264	LEU	2.9
2	C	351	GLN	2.9
2	C	568	PRO	2.9
2	D	207	GLY	2.8
2	C	141	ALA	2.8
2	D	173	ALA	2.8

Continued on next page...

Continued from previous page...

Mol	Chain	Res	Type	RSRZ
2	D	557	TYR	2.8
2	C	356	ASN	2.8
2	C	357	PRO	2.8
2	D	303	PRO	2.8
2	D	577	GLU	2.8
2	D	544	THR	2.7
2	D	116	GLU	2.7
2	D	271	TRP	2.7
2	D	561	PHE	2.7
2	C	558	PRO	2.7
1	B	1	CYS	2.7
2	D	369	TRP	2.7
2	D	519	VAL	2.6
1	B	5	ASP	2.6
2	C	452	GLY	2.6
2	D	410	VAL	2.6
2	C	349	ARG	2.5
2	C	557	TYR	2.5
2	D	357	PRO	2.5
1	B	60	LEU	2.5
2	D	373	LEU	2.5
2	D	269	PRO	2.5
2	D	529	ALA	2.5
2	D	559	ARG	2.4
1	A	5	ASP	2.4
2	D	186	ASN	2.4
2	D	563	ASN	2.4
2	C	129	LYS	2.4
2	D	223	LEU	2.4
2	D	542	GLY	2.4
2	D	203	PHE	2.3
1	B	49	PRO	2.3
2	D	315	SER	2.3
2	C	398	ALA	2.3
2	D	302	GLY	2.3
1	A	6	LYS	2.3
2	D	567	LEU	2.3
2	D	545	THR	2.3
2	C	116	GLU	2.3
1	A	104	ALA	2.3
2	C	548	LYS	2.3
2	D	270	ARG	2.3

Continued on next page...

Continued from previous page...

Mol	Chain	Res	Type	RSRZ
2	C	409	GLN	2.3
2	D	523	GLN	2.3
2	D	566	THR	2.3
2	D	350	TYR	2.3
2	C	542	GLY	2.2
1	B	104	ALA	2.2
2	D	446	GLU	2.2
2	C	227	SER	2.2
2	D	222	LEU	2.2
2	C	359	VAL	2.2
2	D	210	LEU	2.2
2	D	407	PHE	2.2
2	C	576	ARG	2.2
2	C	348	ASN	2.2
2	C	212	PRO	2.2
2	D	564	CYS	2.2
2	D	215	ASN	2.1
2	D	538	CYS	2.1
2	C	305	ALA	2.1
2	D	304	THR	2.1
1	B	6	LYS	2.1
2	C	350	TYR	2.1
2	D	225	ASN	2.1
2	C	210	LEU	2.1
2	C	461	ALA	2.0
2	D	164	ILE	2.0
2	D	526	GLN	2.0
2	C	135	PRO	2.0
1	B	51	VAL	2.0
2	D	574	SER	2.0
2	C	220	PRO	2.0
2	D	212	PRO	2.0

6.2 Non-standard residues in protein, DNA, RNA chains [i](#)

In the following table, the Atoms column lists the number of modelled atoms in the group and the number defined in the chemical component dictionary. The B-factors column lists the minimum, median, 95th percentile and maximum values of B factors of atoms in the group. The column labelled 'Q< 0.9' lists the number of atoms with occupancy less than 0.9.

Mol	Type	Chain	Res	Atoms	RSCC	RSR	B-factors(Å ²)	Q<0.9
2	CSO	D	150	7/8	0.89	0.10	5,6,8,10	0

Continued on next page...

Continued from previous page...

Mol	Type	Chain	Res	Atoms	RSCC	RSR	B-factors(\AA^2)	Q<0.9
2	CSO	C	150	7/8	0.95	0.08	2,5,7,9	0

6.3 Carbohydrates

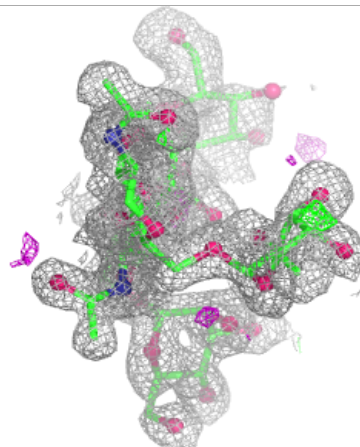
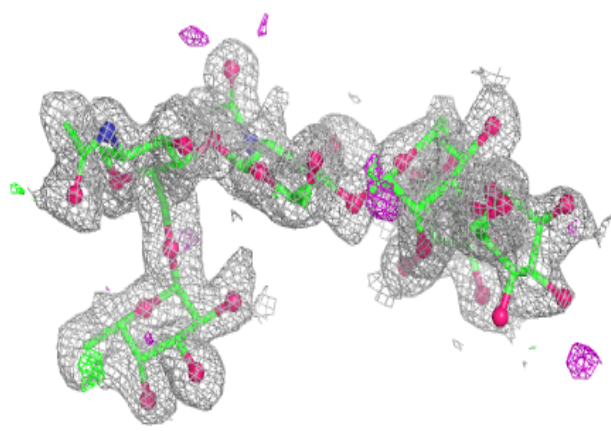
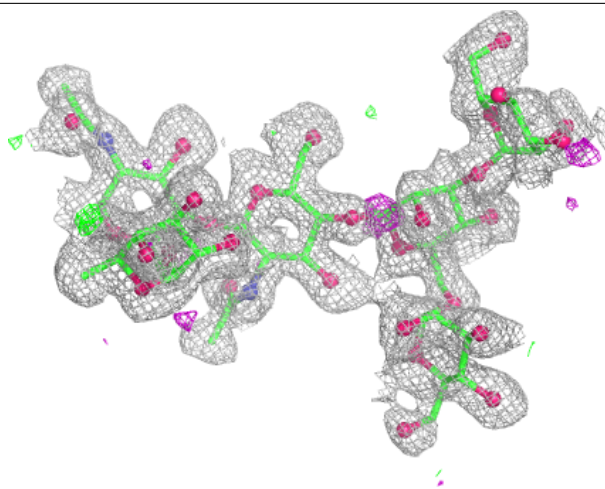
In the following table, the Atoms column lists the number of modelled atoms in the group and the number defined in the chemical component dictionary. The B-factors column lists the minimum, median, 95th percentile and maximum values of B factors of atoms in the group. The column labelled 'Q< 0.9' lists the number of atoms with occupancy less than 0.9.

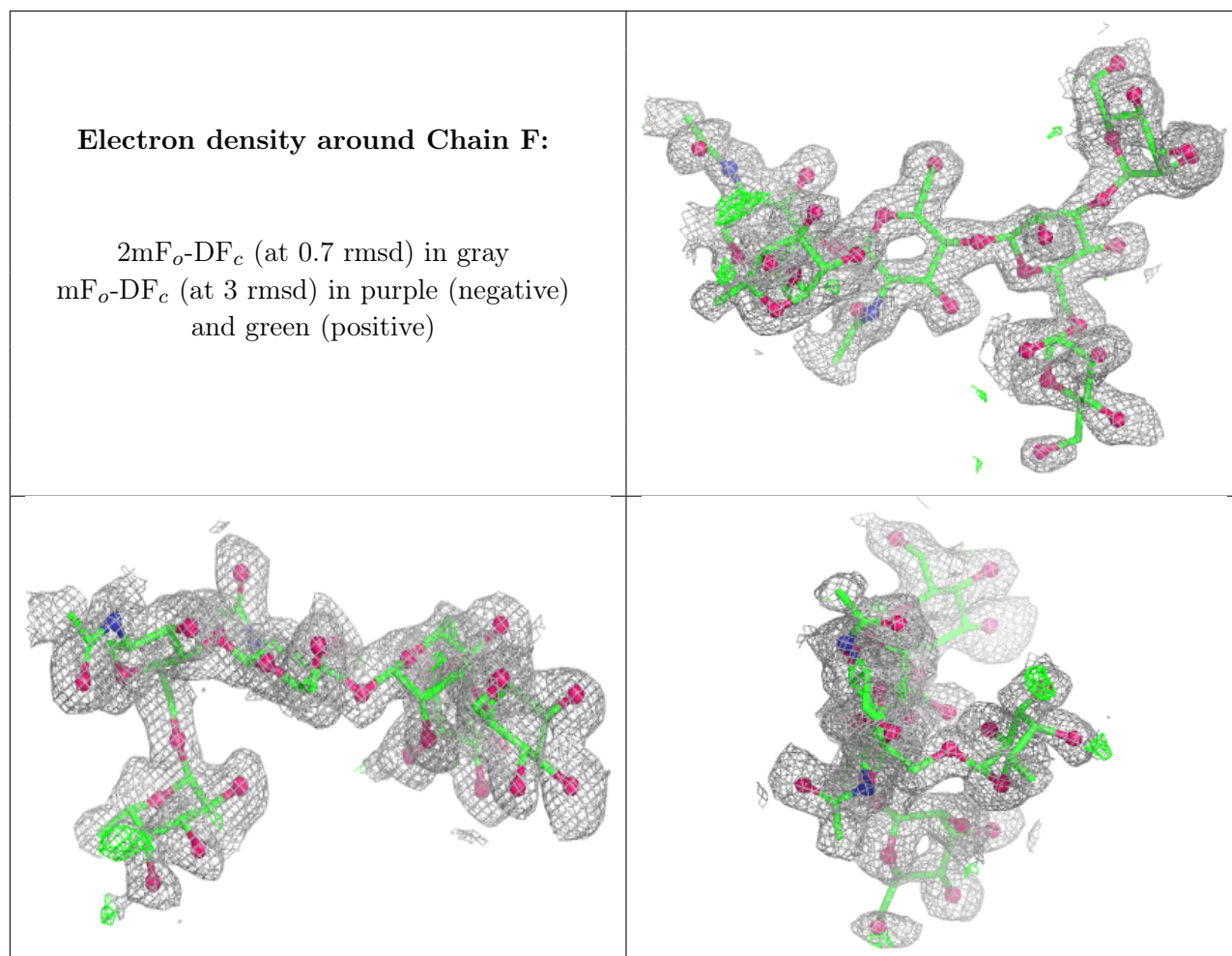
Mol	Type	Chain	Res	Atoms	RSCC	RSR	B-factors(\AA^2)	Q<0.9
3	MAN	E	4	11/12	0.73	0.17	21,25,26,28	0
3	MAN	F	4	11/12	0.79	0.14	17,20,22,23	0
3	FUC	F	6	10/11	0.82	0.15	10,14,16,19	0
3	BMA	E	3	11/12	0.83	0.14	9,14,15,18	0
3	FUC	E	6	10/11	0.87	0.11	9,13,15,17	0
3	NAG	F	1	14/15	0.89	0.10	9,10,15,16	0
3	MAN	F	5	11/12	0.89	0.13	9,14,18,23	0
3	BMA	F	3	11/12	0.89	0.12	9,12,14,18	0
3	MAN	E	5	11/12	0.91	0.09	13,15,17,18	0
3	NAG	F	2	14/15	0.92	0.08	6,8,10,11	0
3	NAG	E	1	14/15	0.93	0.08	6,8,11,13	0
3	NAG	E	2	14/15	0.93	0.08	5,8,11,12	0

The following is a graphical depiction of the model fit to experimental electron density for oligosaccharide. Each fit is shown from different orientation to approximate a three-dimensional view.

Electron density around Chain E:

$2mF_o-DF_c$ (at 0.7 rmsd) in gray
 mF_o-DF_c (at 3 rmsd) in purple (negative)
and green (positive)





6.4 Ligands [i](#)

In the following table, the Atoms column lists the number of modelled atoms in the group and the number defined in the chemical component dictionary. The B-factors column lists the minimum, median, 95th percentile and maximum values of B factors of atoms in the group. The column labelled 'Q < 0.9' lists the number of atoms with occupancy less than 0.9.

Mol	Type	Chain	Res	Atoms	RSCC	RSR	B-factors(Å ²)	Q<0.9
9	ACT	D	609	4/4	0.49	0.24	29,30,30,31	0
5	SO4	B	603	5/5	0.56	0.30	42,42,43,44	5
9	ACT	C	610	4/4	0.60	0.20	22,23,23,25	0
9	ACT	C	608	4/4	0.67	0.21	22,23,24,25	0
9	ACT	C	609	4/4	0.69	0.20	17,17,20,22	0
9	ACT	D	608	4/4	0.70	0.29	32,34,34,34	0
8	NAG	D	606	14/15	0.74	0.21	26,30,34,35	0
8	NAG	C	606	14/15	0.78	0.18	18,22,27,28	0
8	NAG	D	605	14/15	0.81	0.15	16,21,26,28	0
8	NAG	C	605	14/15	0.83	0.14	9,14,20,24	0

Continued on next page...

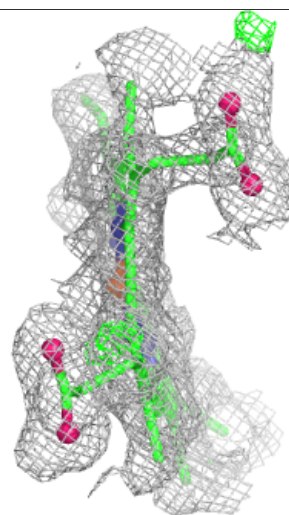
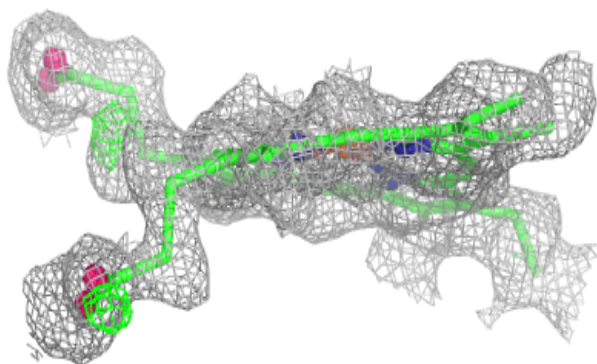
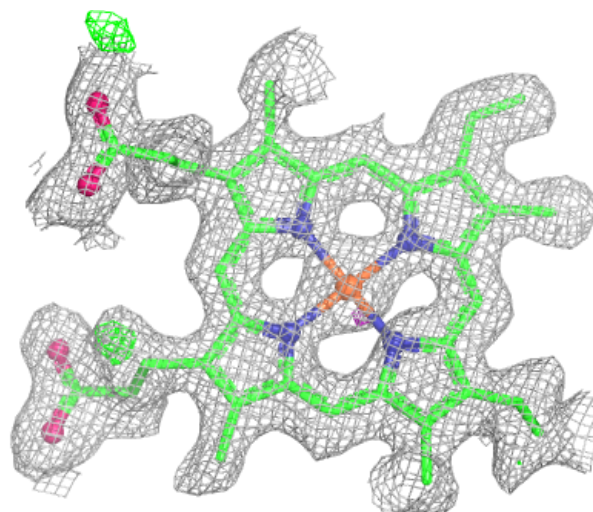
Continued from previous page...

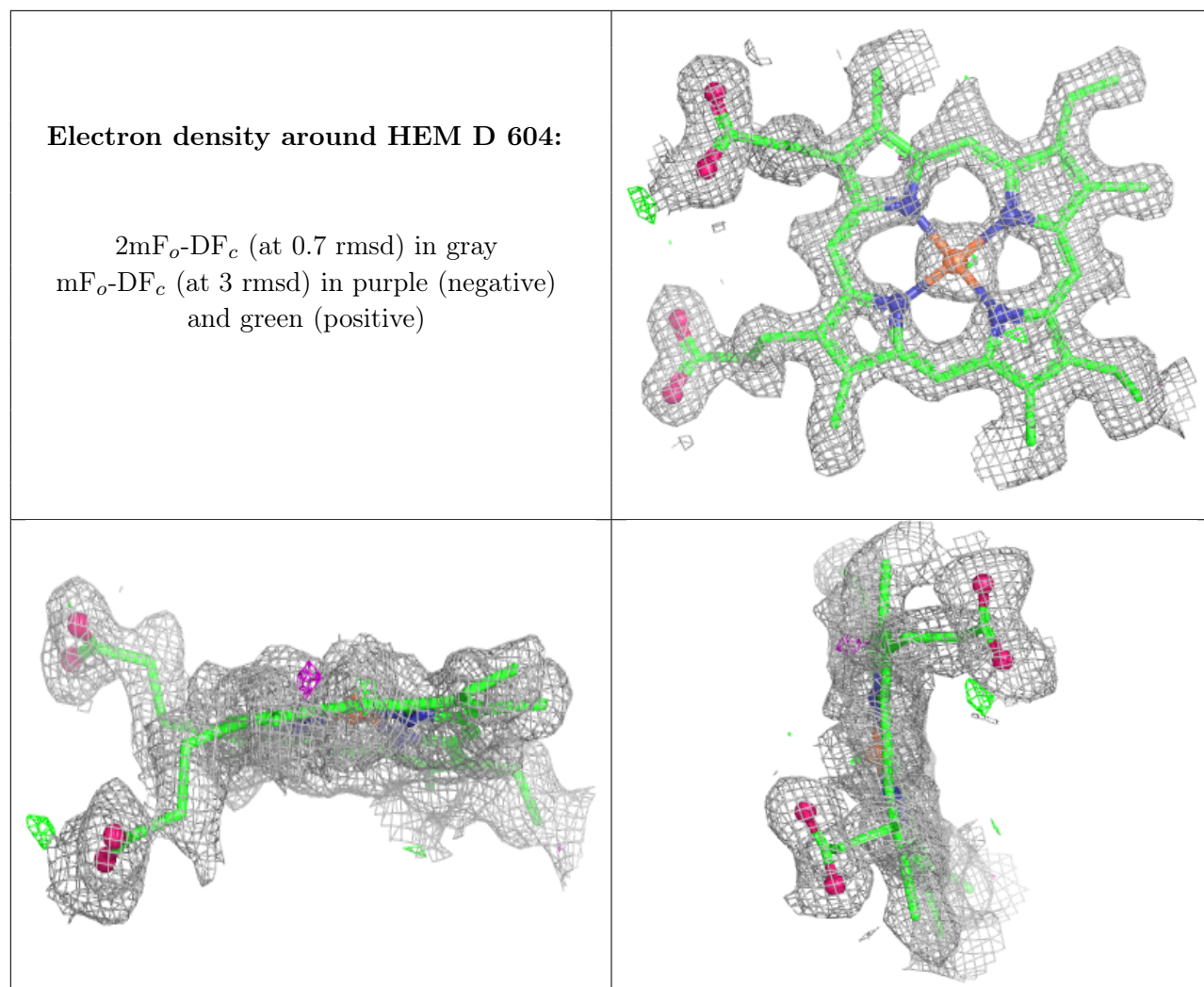
Mol	Type	Chain	Res	Atoms	RSCC	RSR	B-factors(\AA^2)	Q<0.9
9	ACT	D	607	4/4	0.87	0.12	13,14,14,18	0
5	SO4	C	607	5/5	0.93	0.10	20,21,23,25	0
4	BR	A	602	1/1	0.94	0.07	12,12,12,12	1
4	BR	D	602	1/1	0.94	0.07	18,18,18,18	1
4	BR	D	603	1/1	0.94	0.06	23,23,23,23	1
7	HEM	C	604	43/43	0.95	0.08	2,5,8,8	0
7	HEM	D	604	43/43	0.95	0.10	2,5,8,9	0
5	SO4	A	603	5/5	0.95	0.09	19,19,21,22	0
4	BR	B	602	1/1	0.96	0.07	12,12,12,12	1
4	BR	C	602	1/1	0.96	0.04	16,16,16,16	1
4	BR	C	603	1/1	0.96	0.05	24,24,24,24	1
4	BR	A	601	1/1	1.00	0.01	6,6,6,6	0
4	BR	B	601	1/1	1.00	0.01	6,6,6,6	0
6	CA	C	601	1/1	1.00	0.06	5,5,5,5	0
6	CA	D	601	1/1	1.00	0.02	7,7,7,7	0

The following is a graphical depiction of the model fit to experimental electron density of all instances of the Ligand of Interest. In addition, ligands with molecular weight > 250 and outliers as shown on the geometry validation Tables will also be included. Each fit is shown from different orientation to approximate a three-dimensional view.

Electron density around HEM C 604:

$2mF_o-DF_c$ (at 0.7 rmsd) in gray
 mF_o-DF_c (at 3 rmsd) in purple (negative)
and green (positive)





6.5 Other polymers [\(i\)](#)

There are no such residues in this entry.