



Full wwPDB X-ray Structure Validation Report ⓘ

Jan 27, 2024 – 06:10 PM EST

PDB ID : 1D2Z
Title : THREE-DIMENSIONAL STRUCTURE OF A COMPLEX BETWEEN THE DEATH DOMAINS OF PELLE AND TUBE
Authors : Xiao, T.; Towb, P.; Wasserman, S.A.; Sprang, S.R.
Deposited on : 1999-09-28
Resolution : 2.00 Å(reported)

This is a Full wwPDB X-ray Structure Validation Report for a publicly released PDB entry.

We welcome your comments at validation@mail.wwpdb.org

A user guide is available at

<https://www.wwpdb.org/validation/2017/XrayValidationReportHelp>

with specific help available everywhere you see the ⓘ symbol.

The types of validation reports are described at

<http://www.wwpdb.org/validation/2017/FAQs#types>.

The following versions of software and data (see [references ⓘ](#)) were used in the production of this report:

MolProbity : 4.02b-467
Mogul : 1.8.5 (274361), CSD as541be (2020)
Xtriage (Phenix) : 1.13
EDS : 2.36
Percentile statistics : 20191225.v01 (using entries in the PDB archive December 25th 2019)
Refmac : 5.8.0158
CCP4 : 7.0.044 (Gargrove)
Ideal geometry (proteins) : Engh & Huber (2001)
Ideal geometry (DNA, RNA) : Parkinson et al. (1996)
Validation Pipeline (wwPDB-VP) : 2.36

2 Entry composition [i](#)

There are 4 unique types of molecules in this entry. The entry contains 4386 atoms, of which 0 are hydrogens and 0 are deuteriums.

In the tables below, the ZeroOcc column contains the number of atoms modelled with zero occupancy, the AltConf column contains the number of residues with at least one atom in alternate conformation and the Trace column contains the number of residues modelled with at most 2 atoms.

- Molecule 1 is a protein called DEATH DOMAIN OF PELLE.

Mol	Chain	Residues	Atoms					ZeroOcc	AltConf	Trace
			Total	C	N	O	S			
1	A	102	843	539	152	149	3	0	1	0
1	C	108	886	564	161	157	4	0	1	0

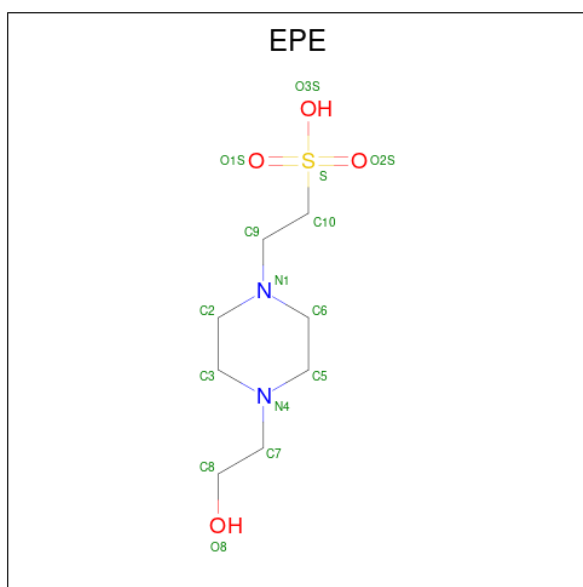
There are 8 discrepancies between the modelled and reference sequences:

Chain	Residue	Modelled	Actual	Comment	Reference
A	22	GLY	THR	cloning artifact	UNP Q05652
A	23	SER	ARG	cloning artifact	UNP Q05652
A	24	HIS	SER	cloning artifact	UNP Q05652
A	25	MET	ARG	cloning artifact	UNP Q05652
C	22	GLY	THR	cloning artifact	UNP Q05652
C	23	SER	ARG	cloning artifact	UNP Q05652
C	24	HIS	SER	cloning artifact	UNP Q05652
C	25	MET	ARG	cloning artifact	UNP Q05652

- Molecule 2 is a protein called DEATH DOMAIN OF TUBE.

Mol	Chain	Residues	Atoms					ZeroOcc	AltConf	Trace
			Total	C	N	O	S			
2	B	150	1171	738	200	226	7	0	0	0
2	D	153	1205	760	204	234	7	0	1	0

- Molecule 3 is 4-(2-HYDROXYETHYL)-1-PIPERAZINE ETHANESULFONIC ACID (three-letter code: EPE) (formula: C₈H₁₈N₂O₄S).



Mol	Chain	Residues	Atoms					ZeroOcc	AltConf
			Total	C	N	O	S		
3	C	1	15	8	2	4	1	0	0

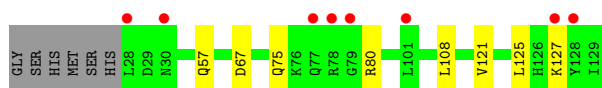
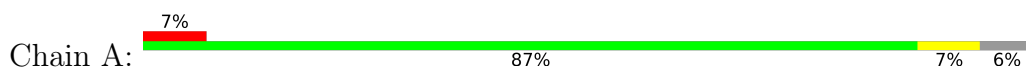
- Molecule 4 is water.

Mol	Chain	Residues	Atoms		ZeroOcc	AltConf
4	A	57	Total	O	0	0
			57	57		
4	B	73	Total	O	0	0
			73	73		
4	C	49	Total	O	0	0
			49	49		
4	D	87	Total	O	0	0
			87	87		

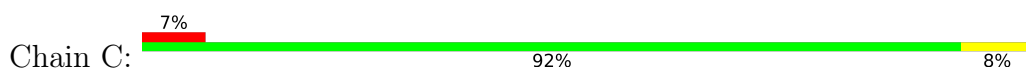
3 Residue-property plots [i](#)

These plots are drawn for all protein, RNA, DNA and oligosaccharide chains in the entry. The first graphic for a chain summarises the proportions of the various outlier classes displayed in the second graphic. The second graphic shows the sequence view annotated by issues in geometry and electron density. Residues are color-coded according to the number of geometric quality criteria for which they contain at least one outlier: green = 0, yellow = 1, orange = 2 and red = 3 or more. A red dot above a residue indicates a poor fit to the electron density ($RSRZ > 2$). Stretches of 2 or more consecutive residues without any outlier are shown as a green connector. Residues present in the sample, but not in the model, are shown in grey.

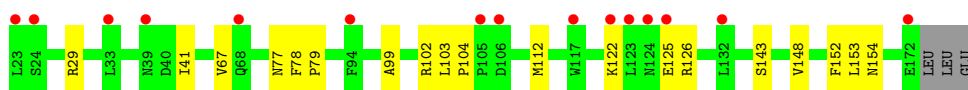
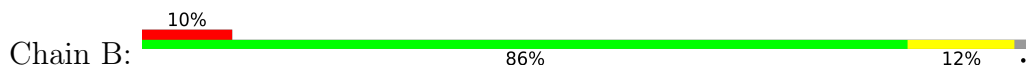
- Molecule 1: DEATH DOMAIN OF PELLE



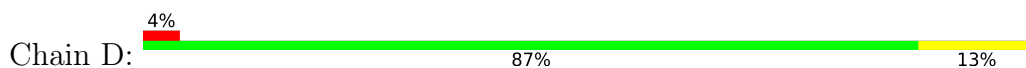
- Molecule 1: DEATH DOMAIN OF PELLE



- Molecule 2: DEATH DOMAIN OF TUBE



- Molecule 2: DEATH DOMAIN OF TUBE



4 Data and refinement statistics

Property	Value	Source
Space group	P 21 21 21	Depositor
Cell constants a, b, c, α , β , γ	58.12Å 87.50Å 117.66Å 90.00° 90.00° 90.00°	Depositor
Resolution (Å)	25.00 – 2.00 24.41 – 1.99	Depositor EDS
% Data completeness (in resolution range)	95.6 (25.00-2.00) 95.1 (24.41-1.99)	Depositor EDS
R_{merge}	0.06	Depositor
R_{sym}	(Not available)	Depositor
$\langle I/\sigma(I) \rangle$ ¹	2.60 (at 1.99Å)	Xtrriage
Refinement program	CNS	Depositor
R, R_{free}	0.211 , 0.244 0.208 , (Not available)	Depositor DCC
R_{free} test set	No test flags present.	wwPDB-VP
Wilson B-factor (Å ²)	34.6	Xtrriage
Anisotropy	0.457	Xtrriage
Bulk solvent k_{sol} (e/Å ³), B_{sol} (Å ²)	0.35 , 49.7	EDS
L-test for twinning ²	$\langle L \rangle = 0.49$, $\langle L^2 \rangle = 0.32$	Xtrriage
Estimated twinning fraction	No twinning to report.	Xtrriage
F_o, F_c correlation	0.95	EDS
Total number of atoms	4386	wwPDB-VP
Average B, all atoms (Å ²)	42.0	wwPDB-VP

Xtrriage's analysis on translational NCS is as follows: *The largest off-origin peak in the Patterson function is 4.27% of the height of the origin peak. No significant pseudotranslation is detected.*

¹Intensities estimated from amplitudes.

²Theoretical values of $\langle |L| \rangle$, $\langle L^2 \rangle$ for acentric reflections are 0.5, 0.333 respectively for untwinned datasets, and 0.375, 0.2 for perfectly twinned datasets.

5 Model quality [i](#)

5.1 Standard geometry [i](#)

Bond lengths and bond angles in the following residue types are not validated in this section: EPE

The Z score for a bond length (or angle) is the number of standard deviations the observed value is removed from the expected value. A bond length (or angle) with $|Z| > 5$ is considered an outlier worth inspection. RMSZ is the root-mean-square of all Z scores of the bond lengths (or angles).

Mol	Chain	Bond lengths		Bond angles	
		RMSZ	# Z >5	RMSZ	# Z >5
1	A	0.34	0/860	0.51	0/1162
1	C	0.31	0/906	0.48	0/1224
2	B	0.30	0/1191	0.51	0/1609
2	D	0.33	0/1225	0.54	1/1655 (0.1%)
All	All	0.32	0/4182	0.51	1/5650 (0.0%)

There are no bond length outliers.

All (1) bond angle outliers are listed below:

Mol	Chain	Res	Type	Atoms	Z	Observed(°)	Ideal(°)
2	D	66	ASP	N-CA-C	-5.02	97.44	111.00

There are no chirality outliers.

There are no planarity outliers.

5.2 Too-close contacts [i](#)

In the following table, the Non-H and H(model) columns list the number of non-hydrogen atoms and hydrogen atoms in the chain respectively. The H(added) column lists the number of hydrogen atoms added and optimized by MolProbity. The Clashes column lists the number of clashes within the asymmetric unit, whereas Symm-Clashes lists symmetry-related clashes.

Mol	Chain	Non-H	H(model)	H(added)	Clashes	Symm-Clashes
1	A	843	0	858	5	0
1	C	886	0	888	5	0
2	B	1171	0	1174	10	0
2	D	1205	0	1207	10	0
3	C	15	0	18	0	0
4	A	57	0	0	1	0

Continued on next page...

Continued from previous page...

Mol	Chain	Non-H	H(model)	H(added)	Clashes	Symm-Clashes
4	B	73	0	0	1	0
4	C	49	0	0	0	0
4	D	87	0	0	0	0
All	All	4386	0	4145	28	0

The all-atom clashscore is defined as the number of clashes found per 1000 atoms (including hydrogen atoms). The all-atom clashscore for this structure is 3.

All (28) close contacts within the same asymmetric unit are listed below, sorted by their clash magnitude.

Atom-1	Atom-2	Interatomic distance (Å)	Clash overlap (Å)
1:A:127:LYS:HG3	4:A:140:HOH:O	1.93	0.68
1:A:75:GLN:NE2	1:A:80:ARG:HD2	2.19	0.58
2:B:103:LEU:HB3	2:B:104:PRO:HD2	1.86	0.58
1:A:121:VAL:CG1	1:A:125:LEU:HD12	2.35	0.56
2:B:78:PHE:HB3	2:B:79:PRO:HD3	1.89	0.55
1:C:104:LEU:HB2	2:D:169:ILE:CD1	2.38	0.53
2:D:120:SER:O	2:D:126:ARG:HD3	2.10	0.52
2:B:102:ARG:HD3	1:C:51:ALA:O	2.10	0.52
2:D:78:PHE:HB3	2:D:79:PRO:HD3	1.93	0.49
2:D:148:VAL:O	2:D:152:PHE:HB2	2.13	0.49
2:D:67:VAL:HG11	2:D:126:ARG:O	2.14	0.47
1:A:57:GLN:HE21	1:A:108:LEU:HD22	1.80	0.47
2:B:148:VAL:O	2:B:152:PHE:HB2	2.15	0.46
1:C:90:TRP:CH2	1:C:100:THR:HG22	2.52	0.43
2:D:60:ILE:HD11	2:D:138:GLN:HG3	2.01	0.43
2:B:99:ALA:HB3	2:B:112:MET:HE1	2.01	0.43
2:B:122:LYS:H	2:B:125:GLU:HB3	1.84	0.42
2:B:29:ARG:NH1	2:B:153:LEU:HD13	2.35	0.42
2:B:67:VAL:HG11	2:B:126:ARG:O	2.19	0.42
2:D:157:THR:HA	2:D:158:PRO:HD3	1.94	0.41
1:C:34:ILE:HD11	1:C:101:LEU:HB2	2.02	0.41
1:A:121:VAL:HG13	1:A:125:LEU:HD12	2.02	0.41
1:C:88:ASN:O	1:C:92:GLY:HA3	2.21	0.41
2:D:42:TYR:O	2:D:46:LYS:HG3	2.21	0.41
2:D:54:TRP:HB3	2:D:110:SER:OG	2.21	0.41
2:B:77:ASN:OD1	2:B:79:PRO:HD2	2.22	0.40
2:B:41:ILE:HG21	4:B:225:HOH:O	2.20	0.40
2:D:53:CYS:SG	2:D:141:LEU:HD22	2.62	0.40

There are no symmetry-related clashes.

5.3 Torsion angles [i](#)

5.3.1 Protein backbone [i](#)

In the following table, the Percentiles column shows the percent Ramachandran outliers of the chain as a percentile score with respect to all X-ray entries followed by that with respect to entries of similar resolution.

The Analysed column shows the number of residues for which the backbone conformation was analysed, and the total number of residues.

Mol	Chain	Analysed	Favoured	Allowed	Outliers	Percentiles	
1	A	101/108 (94%)	101 (100%)	0	0	100	100
1	C	107/108 (99%)	105 (98%)	2 (2%)	0	100	100
2	B	148/153 (97%)	142 (96%)	6 (4%)	0	100	100
2	D	152/153 (99%)	149 (98%)	3 (2%)	0	100	100
All	All	508/522 (97%)	497 (98%)	11 (2%)	0	100	100

There are no Ramachandran outliers to report.

5.3.2 Protein sidechains [i](#)

In the following table, the Percentiles column shows the percent sidechain outliers of the chain as a percentile score with respect to all X-ray entries followed by that with respect to entries of similar resolution.

The Analysed column shows the number of residues for which the sidechain conformation was analysed, and the total number of residues.

Mol	Chain	Analysed	Rotameric	Outliers	Percentiles	
1	A	91/95 (96%)	90 (99%)	1 (1%)	73	78
1	C	96/95 (101%)	95 (99%)	1 (1%)	76	81
2	B	129/132 (98%)	127 (98%)	2 (2%)	62	67
2	D	133/132 (101%)	132 (99%)	1 (1%)	81	86
All	All	449/454 (99%)	444 (99%)	5 (1%)	73	78

All (5) residues with a non-rotameric sidechain are listed below:

Mol	Chain	Res	Type
1	A	67	ASP
2	B	143	SER

Continued on next page...

Continued from previous page...

Mol	Chain	Res	Type
2	B	154	ASN
1	C	95	ASN
2	D	113	MET

Sometimes sidechains can be flipped to improve hydrogen bonding and reduce clashes. All (5) such sidechains are listed below:

Mol	Chain	Res	Type
1	A	57	GLN
2	B	107	GLN
2	B	154	ASN
1	C	44	GLN
1	C	95	ASN

5.3.3 RNA [i](#)

There are no RNA molecules in this entry.

5.4 Non-standard residues in protein, DNA, RNA chains [i](#)

There are no non-standard protein/DNA/RNA residues in this entry.

5.5 Carbohydrates [i](#)

There are no monosaccharides in this entry.

5.6 Ligand geometry [i](#)

1 ligand is modelled in this entry.

In the following table, the Counts columns list the number of bonds (or angles) for which Mogul statistics could be retrieved, the number of bonds (or angles) that are observed in the model and the number of bonds (or angles) that are defined in the Chemical Component Dictionary. The Link column lists molecule types, if any, to which the group is linked. The Z score for a bond length (or angle) is the number of standard deviations the observed value is removed from the expected value. A bond length (or angle) with $|Z| > 2$ is considered an outlier worth inspection. RMSZ is the root-mean-square of all Z scores of the bond lengths (or angles).

Mol	Type	Chain	Res	Link	Bond lengths			Bond angles		
					Counts	RMSZ	$\# Z > 2$	Counts	RMSZ	$\# Z > 2$
3	EPE	C	300	-	15,15,15	1.75	2 (13%)	18,20,20	1.68	4 (22%)

In the following table, the Chirals column lists the number of chiral outliers, the number of chiral centers analysed, the number of these observed in the model and the number defined in the Chemical Component Dictionary. Similar counts are reported in the Torsion and Rings columns. '-' means no outliers of that kind were identified.

Mol	Type	Chain	Res	Link	Chirals	Torsions	Rings
3	EPE	C	300	-	-	1/9/19/19	0/1/1/1

All (2) bond length outliers are listed below:

Mol	Chain	Res	Type	Atoms	Z	Observed(Å)	Ideal(Å)
3	C	300	EPE	O3S-S	5.45	1.66	1.47
3	C	300	EPE	C10-S	2.71	1.81	1.77

All (4) bond angle outliers are listed below:

Mol	Chain	Res	Type	Atoms	Z	Observed(°)	Ideal(°)
3	C	300	EPE	O2S-S-C10	4.26	112.04	106.92
3	C	300	EPE	O3S-S-O1S	-3.34	103.10	111.27
3	C	300	EPE	O2S-S-O1S	2.23	121.67	113.95
3	C	300	EPE	C2-C3-N4	2.10	114.95	110.64

There are no chirality outliers.

All (1) torsion outliers are listed below:

Mol	Chain	Res	Type	Atoms
3	C	300	EPE	N4-C7-C8-O8

There are no ring outliers.

No monomer is involved in short contacts.

5.7 Other polymers [i](#)

There are no such residues in this entry.

5.8 Polymer linkage issues [i](#)

There are no chain breaks in this entry.

6 Fit of model and data

6.1 Protein, DNA and RNA chains

In the following table, the column labelled ‘#RSRZ> 2’ contains the number (and percentage) of RSRZ outliers, followed by percent RSRZ outliers for the chain as percentile scores relative to all X-ray entries and entries of similar resolution. The OWAB column contains the minimum, median, 95th percentile and maximum values of the occupancy-weighted average B-factor per residue. The column labelled ‘Q< 0.9’ lists the number of (and percentage) of residues with an average occupancy less than 0.9.

Mol	Chain	Analysed	<RSRZ>	#RSRZ>2	OWAB(Å ²)	Q<0.9
1	A	102/108 (94%)	0.26	8 (7%) 13 12	25, 34, 60, 69	0
1	C	108/108 (100%)	0.43	8 (7%) 14 13	25, 40, 58, 72	0
2	B	150/153 (98%)	0.62	15 (10%) 7 6	25, 44, 69, 88	0
2	D	153/153 (100%)	0.16	6 (3%) 39 38	23, 35, 67, 97	0
All	All	513/522 (98%)	0.37	37 (7%) 15 14	23, 38, 66, 97	0

All (37) RSRZ outliers are listed below:

Mol	Chain	Res	Type	RSRZ
2	D	23	LEU	11.1
2	B	23	LEU	10.3
2	B	123	LEU	8.4
2	B	124	ASN	7.7
2	D	174	LEU	6.6
2	B	122	LYS	6.2
1	C	22	GLY	5.4
2	B	24	SER	5.2
1	A	28	LEU	4.3
2	D	124	ASN	4.3
2	B	94	PHE	3.9
2	B	105	PRO	3.7
2	D	173	LEU	3.5
2	B	132	LEU	3.5
1	A	77	GLN	3.2
1	C	39	LEU	3.1
1	C	101	LEU	3.1
2	D	24	SER	3.1
1	C	77	GLN	3.0
1	A	30	ASN	2.8
2	B	117	TRP	2.7

Continued on next page...

Continued from previous page...

Mol	Chain	Res	Type	RSRZ
2	B	33	LEU	2.6
1	A	78	ARG	2.6
2	B	106	ASP	2.5
2	B	125	GLU	2.5
1	C	49	LEU	2.4
1	A	128	TYR	2.4
2	D	175	GLU	2.4
2	B	172	GLU	2.3
2	B	39	ASN	2.3
1	C	110	LEU	2.2
2	B	68	GLN	2.2
1	A	101	LEU	2.2
1	C	105	PHE	2.2
1	C	70	GLU	2.1
1	A	79	GLY	2.1
1	A	127	LYS	2.0

6.2 Non-standard residues in protein, DNA, RNA chains [i](#)

There are no non-standard protein/DNA/RNA residues in this entry.

6.3 Carbohydrates [i](#)

There are no monosaccharides in this entry.

6.4 Ligands [i](#)

In the following table, the Atoms column lists the number of modelled atoms in the group and the number defined in the chemical component dictionary. The B-factors column lists the minimum, median, 95th percentile and maximum values of B factors of atoms in the group. The column labelled 'Q< 0.9' lists the number of atoms with occupancy less than 0.9.

Mol	Type	Chain	Res	Atoms	RSCC	RSR	B-factors(Å ²)	Q<0.9
3	EPE	C	300	15/15	0.87	0.19	59,68,73,74	0

6.5 Other polymers [i](#)

There are no such residues in this entry.