



# Full wwPDB X-ray Structure Validation Report ⓘ

Dec 12, 2023 – 06:21 pm GMT

PDB ID : 4D2E  
Title : Crystal structure of an integral membrane kinase - v2.3  
Authors : Li, D.; Boland, C.; Caffrey, M.  
Deposited on : 2014-05-09  
Resolution : 2.28 Å(reported)

This is a Full wwPDB X-ray Structure Validation Report for a publicly released PDB entry.

We welcome your comments at [validation@mail.wwpdb.org](mailto:validation@mail.wwpdb.org)

A user guide is available at

<https://www.wwpdb.org/validation/2017/XrayValidationReportHelp>

with specific help available everywhere you see the ⓘ symbol.

The types of validation reports are described at

<http://www.wwpdb.org/validation/2017/FAQs#types>.

---

The following versions of software and data (see [references ⓘ](#)) were used in the production of this report:

MolProbity : 4.02b-467  
Mogul : 1.8.4, CSD as541be (2020)  
Xtriage (Phenix) : 1.13  
EDS : 2.36  
buster-report : 1.1.7 (2018)  
Percentile statistics : 20191225.v01 (using entries in the PDB archive December 25th 2019)  
Refmac : 5.8.0158  
CCP4 : 7.0.044 (Gargrove)  
Ideal geometry (proteins) : Engh & Huber (2001)  
Ideal geometry (DNA, RNA) : Parkinson et al. (1996)  
Validation Pipeline (wwPDB-VP) : 2.36

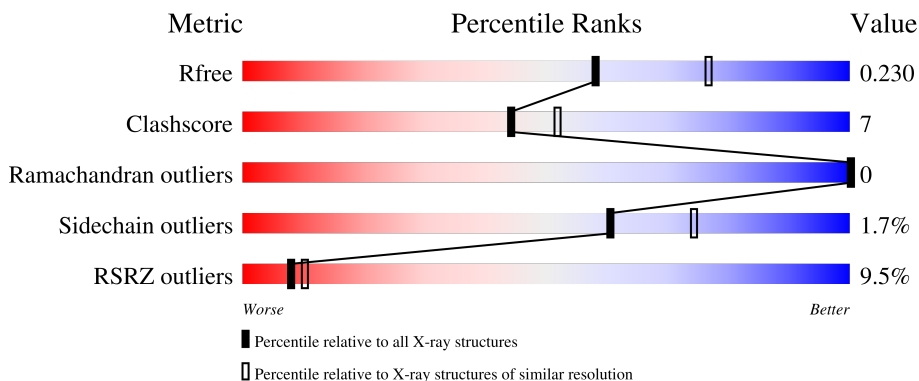
# 1 Overall quality at a glance

The following experimental techniques were used to determine the structure:

*X-RAY DIFFRACTION*

The reported resolution of this entry is 2.28 Å.

Percentile scores (ranging between 0-100) for global validation metrics of the entry are shown in the following graphic. The table shows the number of entries on which the scores are based.



Metric	Whole archive (#Entries)	Similar resolution (#Entries, resolution range(Å))
$R_{free}$	130704	6980 (2.30-2.26)
Clashscore	141614	7711 (2.30-2.26)
Ramachandran outliers	138981	7597 (2.30-2.26)
Sidechain outliers	138945	7598 (2.30-2.26)
RSRZ outliers	127900	6849 (2.30-2.26)

The table below summarises the geometric issues observed across the polymeric chains and their fit to the electron density. The red, orange, yellow and green segments of the lower bar indicate the fraction of residues that contain outliers for  $\geq 3$ , 2, 1 and 0 types of geometric quality criteria respectively. A grey segment represents the fraction of residues that are not modelled. The numeric value for each fraction is indicated below the corresponding segment, with a dot representing fractions  $\leq 5\%$ . The upper red bar (where present) indicates the fraction of residues that have poor fit to the electron density. The numeric value is given above the bar.

Mol	Chain	Length	Quality of chain
1	A	130	
1	B	130	
1	C	130	
1	D	130	
1	E	130	

*Continued on next page...*

*Continued from previous page...*

Mol	Chain	Length	Quality of chain
1	F	130	

The following table lists non-polymeric compounds, carbohydrate monomers and non-standard residues in protein, DNA, RNA chains that are outliers for geometric or electron-density-fit criteria:

Mol	Type	Chain	Res	Chirality	Geometry	Clashes	Electron density
2	78M	C	1123	-	-	-	X
3	78N	C	1127[A]	-	-	-	X
3	78N	C	1127[B]	-	-	-	X
3	78N	E	1122	-	-	-	X
5	FLC	D	1124	-	X	-	-

## 2 Entry composition

There are 7 unique types of molecules in this entry. The entry contains 5344 atoms, of which 0 are hydrogens and 0 are deuteriums.

In the tables below, the ZeroOcc column contains the number of atoms modelled with zero occupancy, the AltConf column contains the number of residues with at least one atom in alternate conformation and the Trace column contains the number of residues modelled with at most 2 atoms.

- Molecule 1 is a protein called DIACYLGLYCEROL KINASE.

Mol	Chain	Residues	Atoms					ZeroOcc	AltConf	Trace
			Total	C	N	O	S			
1	A	116	Total 918	C 597	N 156	O 161	S 4	0	4	0
1	B	98	Total 766	C 499	N 125	O 138	S 4	0	3	0
1	C	93	Total 731	C 476	N 119	O 132	S 4	0	4	0
1	D	108	Total 869	C 567	N 145	O 154	S 3	0	6	0
1	E	90	Total 693	C 455	N 114	O 121	S 3	0	1	0
1	F	92	Total 711	C 464	N 116	O 127	S 4	0	2	0

There are 96 discrepancies between the modelled and reference sequences:

Chain	Residue	Modelled	Actual	Comment	Reference
A	-8	GLY	-	expression tag	UNP P0ABN1
A	-7	HIS	-	expression tag	UNP P0ABN1
A	-6	HIS	-	expression tag	UNP P0ABN1
A	-5	HIS	-	expression tag	UNP P0ABN1
A	-4	HIS	-	expression tag	UNP P0ABN1
A	-3	HIS	-	expression tag	UNP P0ABN1
A	-2	HIS	-	expression tag	UNP P0ABN1
A	-1	GLU	-	expression tag	UNP P0ABN1
A	0	LEU	-	expression tag	UNP P0ABN1
A	41	CYS	ALA	engineered mutation	UNP P0ABN1
A	46	ALA	CYS	engineered mutation	UNP P0ABN1
A	53	VAL	ILE	engineered mutation	UNP P0ABN1
A	70	LEU	ILE	engineered mutation	UNP P0ABN1
A	96	LEU	MET	engineered mutation	UNP P0ABN1
A	107	ASP	VAL	engineered mutation	UNP P0ABN1
A	113	ALA	CYS	engineered mutation	UNP P0ABN1
B	-8	GLY	-	expression tag	UNP P0ABN1

*Continued on next page...*

*Continued from previous page...*

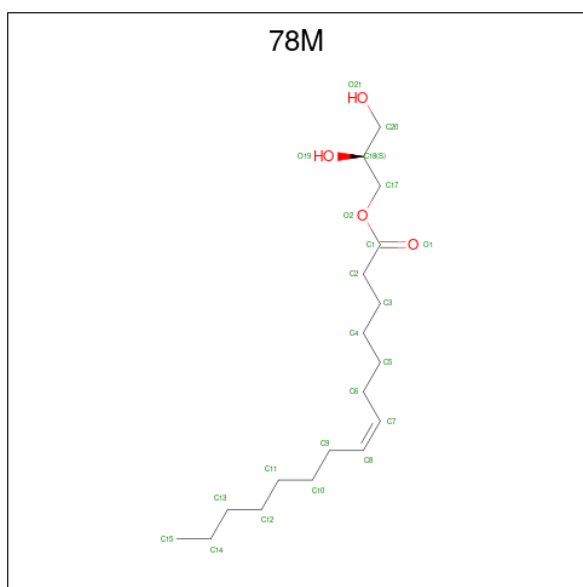
Chain	Residue	Modelled	Actual	Comment	Reference
B	-7	HIS	-	expression tag	UNP P0ABN1
B	-6	HIS	-	expression tag	UNP P0ABN1
B	-5	HIS	-	expression tag	UNP P0ABN1
B	-4	HIS	-	expression tag	UNP P0ABN1
B	-3	HIS	-	expression tag	UNP P0ABN1
B	-2	HIS	-	expression tag	UNP P0ABN1
B	-1	GLU	-	expression tag	UNP P0ABN1
B	0	LEU	-	expression tag	UNP P0ABN1
B	41	CYS	ALA	engineered mutation	UNP P0ABN1
B	46	ALA	CYS	engineered mutation	UNP P0ABN1
B	53	VAL	ILE	engineered mutation	UNP P0ABN1
B	70	LEU	ILE	engineered mutation	UNP P0ABN1
B	96	LEU	MET	engineered mutation	UNP P0ABN1
B	107	ASP	VAL	engineered mutation	UNP P0ABN1
B	113	ALA	CYS	engineered mutation	UNP P0ABN1
C	-8	GLY	-	expression tag	UNP P0ABN1
C	-7	HIS	-	expression tag	UNP P0ABN1
C	-6	HIS	-	expression tag	UNP P0ABN1
C	-5	HIS	-	expression tag	UNP P0ABN1
C	-4	HIS	-	expression tag	UNP P0ABN1
C	-3	HIS	-	expression tag	UNP P0ABN1
C	-2	HIS	-	expression tag	UNP P0ABN1
C	-1	GLU	-	expression tag	UNP P0ABN1
C	0	LEU	-	expression tag	UNP P0ABN1
C	41	CYS	ALA	engineered mutation	UNP P0ABN1
C	46	ALA	CYS	engineered mutation	UNP P0ABN1
C	53	VAL	ILE	engineered mutation	UNP P0ABN1
C	70	LEU	ILE	engineered mutation	UNP P0ABN1
C	96	LEU	MET	engineered mutation	UNP P0ABN1
C	107	ASP	VAL	engineered mutation	UNP P0ABN1
C	113	ALA	CYS	engineered mutation	UNP P0ABN1
D	-8	GLY	-	expression tag	UNP P0ABN1
D	-7	HIS	-	expression tag	UNP P0ABN1
D	-6	HIS	-	expression tag	UNP P0ABN1
D	-5	HIS	-	expression tag	UNP P0ABN1
D	-4	HIS	-	expression tag	UNP P0ABN1
D	-3	HIS	-	expression tag	UNP P0ABN1
D	-2	HIS	-	expression tag	UNP P0ABN1
D	-1	GLU	-	expression tag	UNP P0ABN1
D	0	LEU	-	expression tag	UNP P0ABN1
D	41	CYS	ALA	engineered mutation	UNP P0ABN1
D	46	ALA	CYS	engineered mutation	UNP P0ABN1

*Continued on next page...*

*Continued from previous page...*

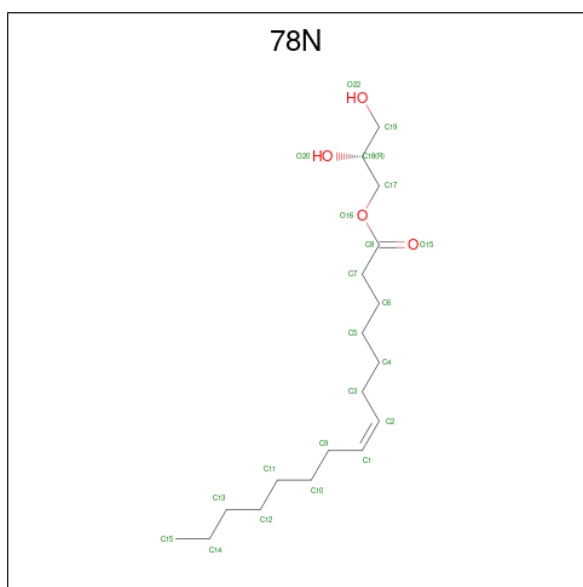
Chain	Residue	Modelled	Actual	Comment	Reference
D	53	VAL	ILE	engineered mutation	UNP P0ABN1
D	70	LEU	ILE	engineered mutation	UNP P0ABN1
D	96	LEU	MET	engineered mutation	UNP P0ABN1
D	107	ASP	VAL	engineered mutation	UNP P0ABN1
D	113	ALA	CYS	engineered mutation	UNP P0ABN1
E	-8	GLY	-	expression tag	UNP P0ABN1
E	-7	HIS	-	expression tag	UNP P0ABN1
E	-6	HIS	-	expression tag	UNP P0ABN1
E	-5	HIS	-	expression tag	UNP P0ABN1
E	-4	HIS	-	expression tag	UNP P0ABN1
E	-3	HIS	-	expression tag	UNP P0ABN1
E	-2	HIS	-	expression tag	UNP P0ABN1
E	-1	GLU	-	expression tag	UNP P0ABN1
E	0	LEU	-	expression tag	UNP P0ABN1
E	41	CYS	ALA	engineered mutation	UNP P0ABN1
E	46	ALA	CYS	engineered mutation	UNP P0ABN1
E	53	VAL	ILE	engineered mutation	UNP P0ABN1
E	70	LEU	ILE	engineered mutation	UNP P0ABN1
E	96	LEU	MET	engineered mutation	UNP P0ABN1
E	107	ASP	VAL	engineered mutation	UNP P0ABN1
E	113	ALA	CYS	engineered mutation	UNP P0ABN1
F	-8	GLY	-	expression tag	UNP P0ABN1
F	-7	HIS	-	expression tag	UNP P0ABN1
F	-6	HIS	-	expression tag	UNP P0ABN1
F	-5	HIS	-	expression tag	UNP P0ABN1
F	-4	HIS	-	expression tag	UNP P0ABN1
F	-3	HIS	-	expression tag	UNP P0ABN1
F	-2	HIS	-	expression tag	UNP P0ABN1
F	-1	GLU	-	expression tag	UNP P0ABN1
F	0	LEU	-	expression tag	UNP P0ABN1
F	41	CYS	ALA	engineered mutation	UNP P0ABN1
F	46	ALA	CYS	engineered mutation	UNP P0ABN1
F	53	VAL	ILE	engineered mutation	UNP P0ABN1
F	70	LEU	ILE	engineered mutation	UNP P0ABN1
F	96	LEU	MET	engineered mutation	UNP P0ABN1
F	107	ASP	VAL	engineered mutation	UNP P0ABN1
F	113	ALA	CYS	engineered mutation	UNP P0ABN1

- Molecule 2 is (2S)-2,3-DIHYDROXYPROPYL(7Z)-PENTADEC-7-ENOATE (three-letter code: 78M) (formula: C<sub>18</sub>H<sub>34</sub>O<sub>4</sub>).



Mol	Chain	Residues	Atoms			ZeroOcc	AltConf
2	A	1	Total	C	O	0	0
			22	18	4		
2	A	1	Total	C	O	0	0
			22	18	4		
2	A	1	Total	C	O	0	0
			22	18	4		
2	A	1	Total	C	O	0	0
			22	18	4		
2	C	1	Total	C	O	0	0
			22	18	4		
2	C	1	Total	C	O	0	0
			22	18	4		
2	D	1	Total	C	O	0	0
			22	18	4		

- Molecule 3 is (2R)-2,3-DIHYDROXYPROPYL(7Z)-PENTADEC-7-ENOATE (three-letter code: 78N) (formula: C<sub>18</sub>H<sub>34</sub>O<sub>4</sub>).



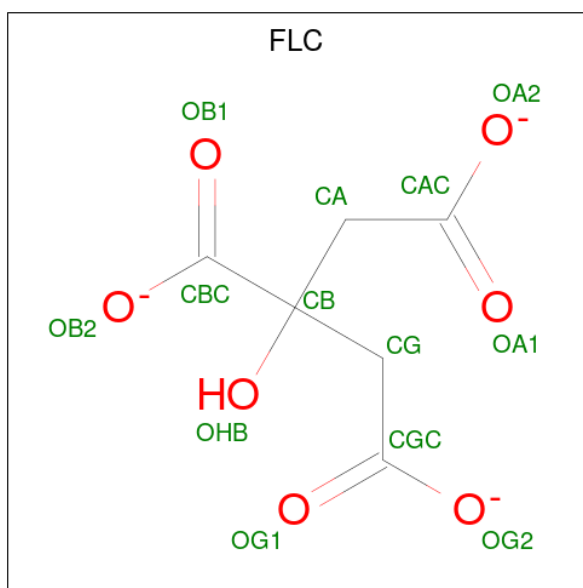
Mol	Chain	Residues	Atoms			ZeroOcc	AltConf
3	A	1	Total	C	O	0	0
			22	18	4		
3	B	1	Total	C	O	0	0
			22	18	4		
3	B	1	Total	C	O	0	1
			44	36	8		
3	B	1	Total	C	O	0	0
			22	18	4		
3	C	1	Total	C	O	0	1
			44	36	8		
3	C	1	Total	C	O	0	0
			22	18	4		
3	C	1	Total	C	O	0	0
			22	18	4		
3	C	1	Total	C	O	0	1
			44	36	8		
3	D	1	Total	C	O	0	0
			22	18	4		
3	D	1	Total	C	O	0	1
			44	36	8		
3	E	1	Total	C	O	0	0
			22	18	4		

- Molecule 4 is SODIUM ION (three-letter code: NA) (formula: Na).

Mol	Chain	Residues	Atoms		ZeroOcc	AltConf
4	D	1	Total	Na	0	0
			1	1		



- Molecule 5 is CITRATE ANION (three-letter code: FLC) (formula:  $C_6H_5O_7$ ).



Mol	Chain	Residues	Atoms	ZeroOcc	AltConf
5	D	1	Total C O 13 6 7	0	0
5	D	1	Total C O 13 6 7	0	0

- Molecule 6 is ZINC ION (three-letter code: ZN) (formula: Zn).

Mol	Chain	Residues	Atoms	ZeroOcc	AltConf
6	D	1	Total Zn 1 1	0	0

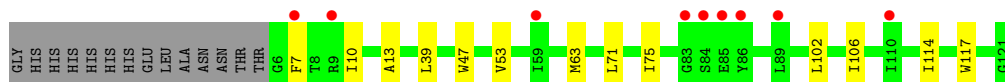
- Molecule 7 is water.

Mol	Chain	Residues	Atoms	ZeroOcc	AltConf
7	A	35	Total O 35 35	0	0
7	B	18	Total O 18 18	0	0
7	C	17	Total O 17 17	0	0
7	D	34	Total O 34 34	0	0
7	E	15	Total O 15 15	0	0
7	F	25	Total O 25 25	0	0

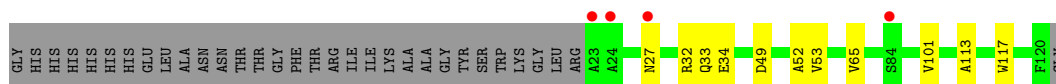
### 3 Residue-property plots [i](#)

These plots are drawn for all protein, RNA, DNA and oligosaccharide chains in the entry. The first graphic for a chain summarises the proportions of the various outlier classes displayed in the second graphic. The second graphic shows the sequence view annotated by issues in geometry and electron density. Residues are color-coded according to the number of geometric quality criteria for which they contain at least one outlier: green = 0, yellow = 1, orange = 2 and red = 3 or more. A red dot above a residue indicates a poor fit to the electron density ( $RSRZ > 2$ ). Stretches of 2 or more consecutive residues without any outlier are shown as a green connector. Residues present in the sample, but not in the model, are shown in grey.

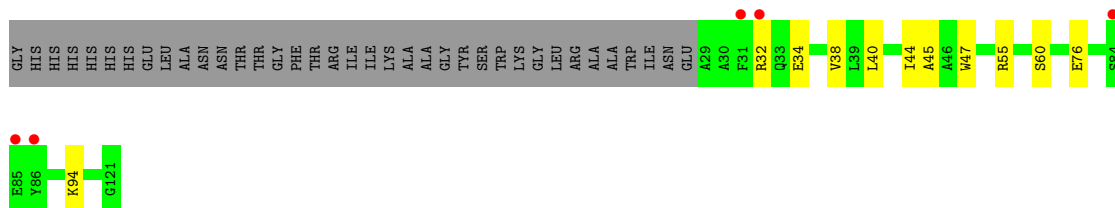
- Molecule 1: DIACYLGLYCEROL KINASE



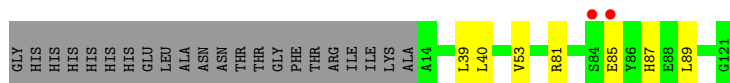
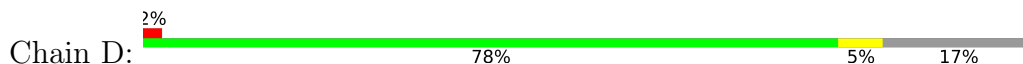
- Molecule 1: DIACYLGLYCEROL KINASE



- Molecule 1: DIACYLGLYCEROL KINASE

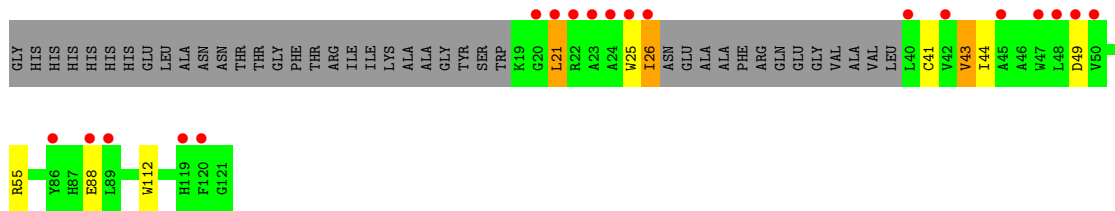


- Molecule 1: DIACYLGLYCEROL KINASE

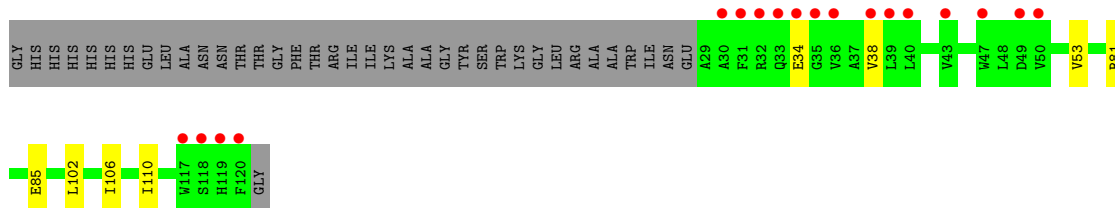


- Molecule 1: DIACYLGLYCEROL KINASE





● Molecule 1: DIACYLGLYCEROL KINASE



## 4 Data and refinement statistics

Property	Value	Source
Space group	P 21 21 21	Depositor
Cell constants a, b, c, $\alpha$ , $\beta$ , $\gamma$	75.29Å 91.82Å 143.92Å 90.00° 90.00° 90.00°	Depositor
Resolution (Å)	52.02 – 2.28 66.71 – 2.28	Depositor EDS
% Data completeness (in resolution range)	98.0 (52.02-2.28) 98.1 (66.71-2.28)	Depositor EDS
$R_{merge}$	0.09	Depositor
$R_{sym}$	(Not available)	Depositor
$\langle I/\sigma(I) \rangle$ <sup>1</sup>	1.20 (at 2.27Å)	Xtrriage
Refinement program	PHENIX (PHENIX.REFINE)	Depositor
R, $R_{free}$	0.188 , 0.229 0.190 , 0.230	Depositor DCC
$R_{free}$ test set	2266 reflections (4.99%)	wwPDB-VP
Wilson B-factor (Å <sup>2</sup> )	39.0	Xtrriage
Anisotropy	0.202	Xtrriage
Bulk solvent $k_{sol}$ (e/Å <sup>3</sup> ), $B_{sol}$ (Å <sup>2</sup> )	0.33 , 69.4	EDS
L-test for twinning <sup>2</sup>	$\langle  L  \rangle = 0.49$ , $\langle L^2 \rangle = 0.33$	Xtrriage
Estimated twinning fraction	No twinning to report.	Xtrriage
$F_o, F_c$ correlation	0.94	EDS
Total number of atoms	5344	wwPDB-VP
Average B, all atoms (Å <sup>2</sup> )	60.0	wwPDB-VP

Xtrriage's analysis on translational NCS is as follows: *The largest off-origin peak in the Patterson function is 4.68% of the height of the origin peak. No significant pseudotranslation is detected.*

<sup>1</sup>Intensities estimated from amplitudes.

<sup>2</sup>Theoretical values of  $\langle |L| \rangle$ ,  $\langle L^2 \rangle$  for acentric reflections are 0.5, 0.333 respectively for untwinned datasets, and 0.375, 0.2 for perfectly twinned datasets.

## 5 Model quality [i](#)

### 5.1 Standard geometry [i](#)

Bond lengths and bond angles in the following residue types are not validated in this section: FLC, NA, ZN, 78N, 78M

The Z score for a bond length (or angle) is the number of standard deviations the observed value is removed from the expected value. A bond length (or angle) with  $|Z| > 5$  is considered an outlier worth inspection. RMSZ is the root-mean-square of all Z scores of the bond lengths (or angles).

Mol	Chain	Bond lengths		Bond angles	
		RMSZ	# Z  >5	RMSZ	# Z  >5
1	A	0.42	0/934	0.51	0/1269
1	B	0.42	0/778	0.48	0/1063
1	C	0.40	0/741	0.47	0/1010
1	D	0.41	0/885	0.51	0/1207
1	E	0.35	0/703	0.52	0/957
1	F	0.39	0/721	0.50	0/984
All	All	0.40	0/4762	0.50	0/6490

There are no bond length outliers.

There are no bond angle outliers.

There are no chirality outliers.

There are no planarity outliers.

### 5.2 Too-close contacts [i](#)

In the following table, the Non-H and H(model) columns list the number of non-hydrogen atoms and hydrogen atoms in the chain respectively. The H(added) column lists the number of hydrogen atoms added and optimized by MolProbity. The Clashes column lists the number of clashes within the asymmetric unit, whereas Symm-Clashes lists symmetry-related clashes.

Mol	Chain	Non-H	H(model)	H(added)	Clashes	Symm-Clashes
1	A	918	0	951	11	0
1	B	766	0	791	10	0
1	C	731	0	763	15	0
1	D	869	0	892	5	0
1	E	693	0	732	8	0
1	F	711	0	744	6	0
2	A	88	0	136	8	0

*Continued on next page...*

Continued from previous page...

Mol	Chain	Non-H	H(model)	H(added)	Clashes	Symm-Clashes
2	C	44	0	68	8	0
2	D	22	0	34	1	0
3	A	22	0	34	4	0
3	B	88	0	136	16	0
3	C	132	0	204	9	0
3	D	66	0	102	2	0
3	E	22	0	34	3	0
4	D	1	0	0	0	0
5	D	26	0	10	0	0
6	D	1	0	0	0	0
7	A	35	0	0	0	0
7	B	18	0	0	0	0
7	C	17	0	0	0	0
7	D	34	0	0	0	0
7	E	15	0	0	1	0
7	F	25	0	0	0	0
All	All	5344	0	5631	72	0

The all-atom clashscore is defined as the number of clashes found per 1000 atoms (including hydrogen atoms). The all-atom clashscore for this structure is 7.

All (72) close contacts within the same asymmetric unit are listed below, sorted by their clash magnitude.

Atom-1	Atom-2	Interatomic distance (Å)	Clash overlap (Å)
1:C:40:LEU:HB3	2:C:1123:78M:H91C	1.55	0.87
1:A:13:ALA:HB1	3:B:1121:78N:H18	1.57	0.86
1:B:49:ASP:HB2	3:D:1128[B]:78N:H172	1.62	0.81
1:A:106:ILE:HG12	3:A:1126:78N:H142	1.68	0.76
1:A:10:ILE:HG12	3:B:1122[B]:78N:H191	1.68	0.74
1:D:87:HIS:HD2	1:D:89:LEU:H	1.35	0.71
2:A:1124:78M:H42C	3:B:1123:78N:H172	1.72	0.69
1:C:40:LEU:HD22	2:C:1123:78M:H112	1.78	0.65
1:D:81:ARG:HD2	1:E:88:GLU:HB3	1.80	0.63
1:E:49:ASP:OD1	1:E:49:ASP:N	2.34	0.61
1:E:55:ARG:NH2	7:E:2003:HOH:O	2.32	0.61
3:B:1122[B]:78N:H61C	3:B:1122[B]:78N:H192	1.83	0.60
1:C:44[A]:ILE:HD11	2:C:1123:78M:H132	1.82	0.60
1:C:60:SER:OG	3:C:1127[B]:78N:H152	2.02	0.59
1:A:114:ILE:HD13	3:A:1126:78N:H71	1.85	0.58
1:C:45:ALA:O	1:C:55:ARG:NH1	2.36	0.58
3:B:1121:78N:H1	3:B:1123:78N:H152	1.86	0.57

Continued on next page...

*Continued from previous page...*

Atom-1	Atom-2	Interatomic distance (Å)	Clash overlap (Å)
1:B:34:GLU:HG2	3:B:1122[B]:78N:H62C	1.86	0.56
1:B:52:ALA:HB2	3:C:1125:78N:H192	1.86	0.56
1:B:33:GLN:NE2	3:B:1122[B]:78N:O22	2.39	0.56
3:B:1121:78N:H131	3:B:1123:78N:H2	1.87	0.55
3:C:1125:78N:H32C	1:D:40:LEU:HD22	1.87	0.55
1:C:34:GLU:OE2	2:C:1122:78M:H22C	2.08	0.54
1:D:87:HIS:CD2	1:D:89:LEU:H	2.23	0.54
1:A:117:TRP:HB2	3:A:1126:78N:H18	1.90	0.54
1:C:44[B]:ILE:HD12	3:C:1126:78N:H152	1.89	0.54
1:A:71:LEU:O	1:A:75:ILE:HG12	2.07	0.54
3:B:1121:78N:O22	3:B:1122[B]:78N:O15	2.25	0.53
3:B:1121:78N:H131	3:B:1123:78N:C2	2.41	0.51
1:F:106:ILE:O	1:F:110:ILE:HG12	2.12	0.49
2:A:1125:78M:H122	2:A:1125:78M:H92C	1.62	0.48
1:E:112:TRP:CD2	3:E:1122:78N:H102	2.49	0.48
1:A:63[A]:MET:HE1	2:A:1122:78M:H132	1.96	0.47
1:F:102:LEU:O	1:F:106:ILE:HG12	2.14	0.47
1:B:113:ALA:O	1:B:117:TRP:HB2	2.13	0.47
3:C:1126:78N:H71	3:C:1126:78N:H41C	1.65	0.47
2:A:1124:78M:H7	2:A:1124:78M:H41C	1.59	0.47
1:B:33:GLN:HE22	3:B:1122[B]:78N:C19	2.28	0.47
1:F:34:GLU:O	1:F:38:VAL:HG12	2.15	0.47
3:E:1122:78N:H2	3:E:1122:78N:H52C	1.58	0.46
2:D:1125:78M:H61C	2:D:1125:78M:H91C	1.77	0.46
1:B:101:VAL:HB	3:B:1121:78N:H191	1.97	0.46
1:C:76:GLU:HG2	1:C:94:LYS:HG2	1.99	0.45
1:A:39:LEU:HD22	2:A:1123:78M:H112	1.98	0.45
3:C:1127[B]:78N:H111	3:C:1127[B]:78N:H1	1.56	0.44
3:D:1127:78N:H91C	3:D:1127:78N:H141	2.00	0.44
3:B:1123:78N:H32C	3:B:1123:78N:H91C	1.78	0.43
1:C:40:LEU:O	1:C:44[B]:ILE:HG13	2.17	0.43
1:E:43:VAL:HG22	1:E:44:ILE:HD13	2.01	0.43
2:C:1123:78M:H62C	3:C:1126:78N:H153	2.00	0.43
1:E:25:TRP:O	1:E:26:ILE:HG13	2.18	0.43
1:E:41:CYS:SG	3:E:1122:78N:H101	2.59	0.43
1:C:40:LEU:O	1:C:44[A]:ILE:HG12	2.18	0.43
2:A:1124:78M:H153	3:B:1121:78N:H141	1.99	0.43
1:F:81:ARG:NH1	1:F:85:GLU:HB2	2.34	0.43
1:B:65:VAL:HG11	3:B:1122[A]:78N:H72	2.01	0.43
1:C:32:ARG:HA	1:C:32:ARG:HE	1.83	0.42
1:D:53:VAL:HG11	1:F:53:VAL:HG11	2.00	0.42

*Continued on next page...*

Continued from previous page...

Atom-1	Atom-2	Interatomic distance (Å)	Clash overlap (Å)
1:C:47:TRP:CE2	3:C:1126:78N:H192	2.55	0.42
3:A:1126:78N:H92C	3:A:1126:78N:H32C	1.82	0.42
1:C:44[A]:ILE:HD11	2:C:1123:78M:H101	2.02	0.42
2:A:1123:78M:H121	2:A:1123:78M:H152	1.71	0.42
1:A:7:PHE:HA	1:A:10:ILE:HG13	2.02	0.41
1:A:102:LEU:O	1:A:106:ILE:HG13	2.19	0.41
1:E:21:LEU:HD13	1:F:102:LEU:HD23	2.03	0.41
2:A:1125:78M:H91C	2:A:1125:78M:H61C	1.92	0.41
1:B:117:TRP:CE3	3:B:1123:78N:H72	2.55	0.41
1:A:53:VAL:HG11	1:B:53:VAL:HG23	2.02	0.40
1:C:32:ARG:HA	1:C:32:ARG:NE	2.36	0.40
2:C:1122:78M:H52C	2:C:1123:78M:H172	2.03	0.40
2:C:1122:78M:H151	3:C:1126:78N:H141	2.02	0.40
1:C:34:GLU:O	1:C:38:VAL:HG13	2.22	0.40

There are no symmetry-related clashes.

## 5.3 Torsion angles [i](#)

### 5.3.1 Protein backbone [i](#)

In the following table, the Percentiles column shows the percent Ramachandran outliers of the chain as a percentile score with respect to all X-ray entries followed by that with respect to entries of similar resolution.

The Analysed column shows the number of residues for which the backbone conformation was analysed, and the total number of residues.

Mol	Chain	Analysed	Favoured	Allowed	Outliers	Percentiles	
1	A	118/130 (91%)	118 (100%)	0	0	100	100
1	B	99/130 (76%)	99 (100%)	0	0	100	100
1	C	95/130 (73%)	95 (100%)	0	0	100	100
1	D	112/130 (86%)	112 (100%)	0	0	100	100
1	E	87/130 (67%)	86 (99%)	1 (1%)	0	100	100
1	F	92/130 (71%)	91 (99%)	1 (1%)	0	100	100
All	All	603/780 (77%)	601 (100%)	2 (0%)	0	100	100

There are no Ramachandran outliers to report.



### 5.3.2 Protein sidechains [i](#)

In the following table, the Percentiles column shows the percent sidechain outliers of the chain as a percentile score with respect to all X-ray entries followed by that with respect to entries of similar resolution.

The Analysed column shows the number of residues for which the sidechain conformation was analysed, and the total number of residues.

Mol	Chain	Analysed	Rotameric	Outliers	Percentiles	
1	A	94/102 (92%)	93 (99%)	1 (1%)	73	84
1	B	81/102 (79%)	79 (98%)	2 (2%)	47	62
1	C	78/102 (76%)	78 (100%)	0	100	100
1	D	90/102 (88%)	88 (98%)	2 (2%)	52	66
1	E	73/102 (72%)	70 (96%)	3 (4%)	30	41
1	F	76/102 (74%)	76 (100%)	0	100	100
All	All	492/612 (80%)	484 (98%)	8 (2%)	60	76

All (8) residues with a non-rotameric sidechain are listed below:

Mol	Chain	Res	Type
1	A	47	TRP
1	B	27	ASN
1	B	32	ARG
1	D	39	LEU
1	D	85	GLU
1	E	21	LEU
1	E	26	ILE
1	E	43	VAL

Sometimes sidechains can be flipped to improve hydrogen bonding and reduce clashes. All (3) such sidechains are listed below:

Mol	Chain	Res	Type
1	B	33	GLN
1	D	33	GLN
1	D	87	HIS

### 5.3.3 RNA [i](#)

There are no RNA molecules in this entry.

## 5.4 Non-standard residues in protein, DNA, RNA chains [i](#)

There are no non-standard protein/DNA/RNA residues in this entry.

## 5.5 Carbohydrates [i](#)

There are no monosaccharides in this entry.

## 5.6 Ligand geometry [i](#)

Of 26 ligands modelled in this entry, 2 are monoatomic - leaving 24 for Mogul analysis.

In the following table, the Counts columns list the number of bonds (or angles) for which Mogul statistics could be retrieved, the number of bonds (or angles) that are observed in the model and the number of bonds (or angles) that are defined in the Chemical Component Dictionary. The Link column lists molecule types, if any, to which the group is linked. The Z score for a bond length (or angle) is the number of standard deviations the observed value is removed from the expected value. A bond length (or angle) with  $|Z| > 2$  is considered an outlier worth inspection. RMSZ is the root-mean-square of all Z scores of the bond lengths (or angles).

Mol	Type	Chain	Res	Link	Bond lengths			Bond angles		
					Counts	RMSZ	# Z  > 2	Counts	RMSZ	# Z  > 2
3	78N	B	1123	-	21,21,21	0.98	1 (4%)	22,22,22	0.97	2 (9%)
3	78N	E	1122	-	21,21,21	1.04	1 (4%)	22,22,22	0.81	1 (4%)
3	78N	C	1124[B]	-	21,21,21	0.95	1 (4%)	22,22,22	0.97	2 (9%)
3	78N	A	1126	-	21,21,21	1.00	1 (4%)	22,22,22	0.82	1 (4%)
3	78N	C	1127[A]	-	21,21,21	1.02	1 (4%)	22,22,22	1.07	2 (9%)
3	78N	D	1127	-	21,21,21	0.88	1 (4%)	22,22,22	0.75	1 (4%)
3	78N	B	1122[B]	-	21,21,21	0.99	1 (4%)	22,22,22	1.06	2 (9%)
2	78M	D	1125	-	21,21,21	0.97	1 (4%)	22,22,22	1.16	2 (9%)
3	78N	C	1125	-	21,21,21	0.92	1 (4%)	22,22,22	1.14	3 (13%)
2	78M	C	1122	-	21,21,21	0.98	1 (4%)	22,22,22	0.86	1 (4%)
5	FLC	D	1124	6	12,12,12	1.84	4 (33%)	17,17,17	2.10	5 (29%)
3	78N	C	1124[A]	-	21,21,21	0.97	1 (4%)	22,22,22	1.05	2 (9%)
2	78M	A	1123	-	21,21,21	0.94	1 (4%)	22,22,22	1.03	2 (9%)
3	78N	D	1128[B]	-	21,21,21	0.98	1 (4%)	22,22,22	0.89	1 (4%)
3	78N	C	1126	-	21,21,21	0.98	1 (4%)	22,22,22	1.03	2 (9%)
3	78N	B	1122[A]	-	21,21,21	0.98	1 (4%)	22,22,22	0.96	2 (9%)
2	78M	A	1125	-	21,21,21	1.01	1 (4%)	22,22,22	1.07	1 (4%)
2	78M	C	1123	-	21,21,21	1.00	1 (4%)	22,22,22	0.77	1 (4%)

Mol	Type	Chain	Res	Link	Bond lengths			Bond angles		
					Counts	RMSZ	# Z  > 2	Counts	RMSZ	# Z  > 2
2	78M	A	1122	-	21,21,21	0.96	1 (4%)	22,22,22	1.15	2 (9%)
5	FLC	D	1123	6	12,12,12	1.80	4 (33%)	17,17,17	1.78	3 (17%)
2	78M	A	1124	-	21,21,21	0.95	1 (4%)	22,22,22	0.95	1 (4%)
3	78N	B	1121	-	21,21,21	0.99	1 (4%)	22,22,22	1.08	2 (9%)
3	78N	C	1127[B]	-	21,21,21	0.98	1 (4%)	22,22,22	1.09	2 (9%)
3	78N	D	1128[A]	-	21,21,21	0.99	1 (4%)	22,22,22	0.93	2 (9%)

In the following table, the Chirals column lists the number of chiral outliers, the number of chiral centers analysed, the number of these observed in the model and the number defined in the Chemical Component Dictionary. Similar counts are reported in the Torsion and Rings columns. '-' means no outliers of that kind were identified.

Mol	Type	Chain	Res	Link	Chirals	Torsions	Rings
3	78N	B	1123	-	-	6/21/21/21	-
3	78N	E	1122	-	-	9/21/21/21	-
3	78N	C	1124[B]	-	-	11/21/21/21	-
3	78N	A	1126	-	-	10/21/21/21	-
3	78N	C	1127[A]	-	-	5/21/21/21	-
3	78N	D	1127	-	-	10/21/21/21	-
3	78N	B	1122[B]	-	-	7/21/21/21	-
2	78M	D	1125	-	-	4/21/21/21	-
3	78N	C	1125	-	-	6/21/21/21	-
2	78M	C	1122	-	-	13/21/21/21	-
5	FLC	D	1124	6	-	10/16/16/16	-
3	78N	C	1124[A]	-	-	8/21/21/21	-
2	78M	A	1123	-	-	10/21/21/21	-
3	78N	D	1128[B]	-	-	10/21/21/21	-
3	78N	C	1126	-	-	8/21/21/21	-
3	78N	B	1122[A]	-	-	12/21/21/21	-
2	78M	A	1125	-	-	8/21/21/21	-
2	78M	C	1123	-	-	13/21/21/21	-
2	78M	A	1122	-	-	5/21/21/21	-
5	FLC	D	1123	6	-	5/16/16/16	-
2	78M	A	1124	-	-	9/21/21/21	-
3	78N	B	1121	-	-	13/21/21/21	-
3	78N	C	1127[B]	-	-	11/21/21/21	-

Continued on next page...

*Continued from previous page...*

Mol	Type	Chain	Res	Link	Chirals	Torsions	Rings
3	78N	D	1128[A]	-	-	11/21/21/21	-

All (30) bond length outliers are listed below:

Mol	Chain	Res	Type	Atoms	Z	Observed(Å)	Ideal(Å)
3	E	1122	78N	O16-C8	4.51	1.46	1.33
2	A	1125	78M	O2-C1	4.42	1.46	1.33
3	C	1127[A]	78N	O16-C8	4.41	1.46	1.33
3	A	1126	78N	O16-C8	4.37	1.46	1.33
2	C	1123	78M	O2-C1	4.34	1.46	1.33
3	B	1121	78N	O16-C8	4.32	1.46	1.33
3	B	1122[B]	78N	O16-C8	4.32	1.46	1.33
2	C	1122	78M	O2-C1	4.28	1.45	1.33
3	D	1128[A]	78N	O16-C8	4.28	1.45	1.33
3	B	1123	78N	O16-C8	4.27	1.45	1.33
3	C	1127[B]	78N	O16-C8	4.24	1.45	1.33
3	C	1126	78N	O16-C8	4.23	1.45	1.33
3	D	1128[B]	78N	O16-C8	4.23	1.45	1.33
3	B	1122[A]	78N	O16-C8	4.22	1.45	1.33
3	C	1124[A]	78N	O16-C8	4.18	1.45	1.33
2	A	1124	78M	O2-C1	4.15	1.45	1.33
2	D	1125	78M	O2-C1	4.12	1.45	1.33
2	A	1122	78M	O2-C1	4.09	1.45	1.33
2	A	1123	78M	O2-C1	4.07	1.45	1.33
3	C	1124[B]	78N	O16-C8	4.04	1.45	1.33
3	C	1125	78N	O16-C8	3.96	1.44	1.33
3	D	1127	78N	O16-C8	3.76	1.44	1.33
5	D	1123	FLC	CG-CB	-3.09	1.50	1.53
5	D	1124	FLC	CB-CBC	-3.05	1.50	1.53
5	D	1124	FLC	CA-CB	-2.98	1.50	1.53
5	D	1124	FLC	OHB-CB	-2.74	1.38	1.43
5	D	1123	FLC	OHB-CB	-2.69	1.38	1.43
5	D	1123	FLC	CB-CBC	-2.47	1.50	1.53
5	D	1123	FLC	CA-CB	-2.36	1.50	1.53
5	D	1124	FLC	CG-CB	-2.09	1.51	1.53

All (45) bond angle outliers are listed below:

Mol	Chain	Res	Type	Atoms	Z	Observed(°)	Ideal(°)
5	D	1124	FLC	CB-CG-CGC	5.64	127.47	113.81
5	D	1123	FLC	OB2-CBC-CB	4.30	120.52	113.05
5	D	1124	FLC	OB2-CBC-CB	3.65	119.40	113.05

*Continued on next page...*

Continued from previous page...

Mol	Chain	Res	Type	Atoms	Z	Observed(°)	Ideal(°)
2	A	1122	78M	O2-C1-C2	3.52	122.97	111.91
5	D	1123	FLC	CB-CA-CAC	3.52	122.34	113.81
2	D	1125	78M	O2-C1-C2	3.45	122.74	111.91
3	B	1121	78N	O16-C8-C7	3.38	122.50	111.91
2	A	1125	78M	O2-C1-C2	3.37	122.47	111.91
3	C	1124[A]	78N	O16-C8-C7	3.34	122.39	111.91
3	B	1122[B]	78N	O16-C8-C7	3.29	122.23	111.91
3	C	1127[A]	78N	O16-C8-C7	3.23	122.04	111.91
3	C	1127[B]	78N	O16-C8-C7	3.19	121.91	111.91
3	C	1125	78N	C6-C7-C8	-3.16	102.13	113.62
3	C	1126	78N	O16-C8-C7	3.03	121.43	111.91
3	B	1122[A]	78N	O16-C8-C7	3.01	121.34	111.91
3	B	1123	78N	O16-C8-C7	2.97	121.23	111.91
2	A	1123	78M	O2-C1-C2	2.95	121.15	111.91
3	C	1124[B]	78N	O16-C8-C7	2.92	121.06	111.91
3	C	1125	78N	O16-C8-C7	2.83	120.79	111.91
3	D	1128[A]	78N	O16-C8-C7	2.81	120.74	111.91
2	A	1124	78M	O2-C1-C2	2.69	120.34	111.91
2	D	1125	78M	O2-C1-O1	-2.68	116.82	123.59
3	D	1128[B]	78N	O16-C8-C7	2.61	120.11	111.91
2	A	1122	78M	O2-C1-O1	-2.57	117.11	123.59
3	C	1124[B]	78N	O16-C8-O15	-2.50	117.27	123.59
5	D	1124	FLC	CB-CA-CAC	2.49	119.85	113.81
2	C	1123	78M	O2-C1-C2	2.43	119.53	111.91
3	E	1122	78N	O16-C8-C7	2.40	119.45	111.91
3	C	1124[A]	78N	O16-C8-O15	-2.36	117.62	123.59
3	A	1126	78N	O16-C8-C7	2.35	119.29	111.91
3	D	1128[A]	78N	O16-C8-O15	-2.30	117.78	123.59
2	C	1122	78M	O2-C1-C2	2.25	118.97	111.91
3	B	1122[B]	78N	O16-C8-O15	-2.25	117.92	123.59
3	B	1122[A]	78N	O16-C8-O15	-2.22	117.98	123.59
3	C	1127[B]	78N	O16-C8-O15	-2.21	118.03	123.59
5	D	1123	FLC	OA2-CAC-OA1	-2.20	117.82	123.30
3	C	1125	78N	O16-C8-O15	-2.16	118.14	123.59
3	B	1123	78N	O16-C8-O15	-2.14	118.19	123.59
3	B	1121	78N	O16-C8-O15	-2.13	118.21	123.59
5	D	1124	FLC	OG2-CGC-CG	2.13	121.18	114.35
3	C	1126	78N	O16-C8-O15	-2.10	118.28	123.59
5	D	1124	FLC	OG2-CGC-OG1	-2.09	118.10	123.30
3	C	1127[A]	78N	O16-C8-O15	-2.08	118.33	123.59
3	D	1127	78N	O16-C8-C7	2.03	118.28	111.91
2	A	1123	78M	O2-C1-O1	-2.03	118.48	123.59

There are no chirality outliers.

All (214) torsion outliers are listed below:

Mol	Chain	Res	Type	Atoms
2	A	1123	78M	O2-C17-C18-C20
2	C	1122	78M	O2-C17-C18-C20
2	C	1122	78M	O2-C17-C18-O19
2	C	1123	78M	C17-C18-C20-O21
2	C	1123	78M	O1-C1-O2-C17
2	C	1123	78M	C2-C1-O2-C17
3	A	1126	78N	C17-C18-C19-O22
3	A	1126	78N	O15-C8-O16-C17
3	A	1126	78N	C7-C8-O16-C17
3	B	1121	78N	O16-C17-C18-O20
3	B	1122[A]	78N	O20-C18-C19-O22
3	B	1122[B]	78N	C17-C18-C19-O22
3	C	1126	78N	O15-C8-O16-C17
3	C	1126	78N	C7-C8-O16-C17
3	D	1127	78N	O16-C17-C18-C19
3	D	1127	78N	O16-C17-C18-O20
3	D	1127	78N	O15-C8-O16-C17
3	D	1127	78N	C7-C8-O16-C17
3	D	1128[A]	78N	O16-C17-C18-C19
3	D	1128[B]	78N	O16-C17-C18-C19
3	E	1122	78N	O16-C17-C18-C19
5	D	1124	FLC	CAC-CA-CB-CBC
5	D	1124	FLC	CAC-CA-CB-CG
5	D	1124	FLC	CAC-CA-CB-OHB
5	D	1124	FLC	CG-CB-CBC-OB1
5	D	1124	FLC	CG-CB-CBC-OB2
5	D	1124	FLC	OHB-CB-CBC-OB1
5	D	1124	FLC	OHB-CB-CBC-OB2
5	D	1124	FLC	CA-CB-CG-CGC
5	D	1124	FLC	CBC-CB-CG-CGC
5	D	1124	FLC	OHB-CB-CG-CGC
2	D	1125	78M	O1-C1-O2-C17
3	D	1128[A]	78N	O15-C8-O16-C17
2	D	1125	78M	C2-C1-O2-C17
3	D	1128[A]	78N	C7-C8-O16-C17
2	C	1122	78M	O1-C1-O2-C17
3	B	1122[B]	78N	O15-C8-O16-C17
3	C	1127[A]	78N	O15-C8-O16-C17
3	C	1127[B]	78N	O15-C8-O16-C17
2	C	1122	78M	C2-C1-O2-C17

*Continued on next page...*

*Continued from previous page...*

Mol	Chain	Res	Type	Atoms
3	C	1124[A]	78N	C7-C8-O16-C17
3	C	1127[A]	78N	C7-C8-O16-C17
3	B	1122[B]	78N	C7-C8-O16-C17
3	C	1124[B]	78N	C7-C8-O16-C17
3	C	1127[B]	78N	C7-C8-O16-C17
3	C	1124[A]	78N	O15-C8-O16-C17
2	A	1123	78M	C2-C1-O2-C17
3	B	1121	78N	C7-C8-O16-C17
2	A	1123	78M	O2-C17-C18-O19
2	C	1123	78M	O2-C17-C18-O19
3	B	1122[A]	78N	O16-C17-C18-O20
3	D	1128[B]	78N	O16-C17-C18-O20
2	A	1123	78M	O1-C1-O2-C17
3	B	1121	78N	O15-C8-O16-C17
3	C	1124[B]	78N	O15-C8-O16-C17
3	B	1122[A]	78N	C7-C8-O16-C17
3	B	1121	78N	C11-C12-C13-C14
3	C	1127[B]	78N	O16-C17-C18-C19
3	C	1127[B]	78N	O16-C17-C18-O20
3	D	1128[A]	78N	O16-C17-C18-O20
3	E	1122	78N	O16-C17-C18-O20
2	A	1124	78M	C1-C2-C3-C4
2	A	1125	78M	C1-C2-C3-C4
2	C	1123	78M	C1-C2-C3-C4
3	C	1127[B]	78N	C5-C6-C7-C8
2	A	1122	78M	C2-C1-O2-C17
3	C	1124[A]	78N	C5-C6-C7-C8
3	C	1124[B]	78N	C5-C6-C7-C8
3	B	1122[A]	78N	O15-C8-O16-C17
2	C	1122	78M	C4-C5-C6-C7
3	C	1127[B]	78N	C11-C10-C9-C1
2	A	1122	78M	O1-C1-O2-C17
2	C	1123	78M	C4-C5-C6-C7
3	C	1124[B]	78N	C11-C10-C9-C1
2	A	1123	78M	C3-C4-C5-C6
3	C	1125	78N	C3-C4-C5-C6
2	A	1123	78M	C9-C10-C11-C12
2	A	1124	78M	C11-C12-C13-C14
3	D	1128[B]	78N	C9-C10-C11-C12
3	C	1127[B]	78N	C9-C10-C11-C12
2	C	1122	78M	C1-C2-C3-C4
3	B	1122[A]	78N	C4-C5-C6-C7

*Continued on next page...*

*Continued from previous page...*

<b>Mol</b>	<b>Chain</b>	<b>Res</b>	<b>Type</b>	<b>Atoms</b>
3	B	1122[A]	78N	C17-C18-C19-O22
3	B	1123	78N	C17-C18-C19-O22
3	D	1128[A]	78N	C17-C18-C19-O22
3	E	1122	78N	C17-C18-C19-O22
3	C	1126	78N	C3-C4-C5-C6
3	C	1127[B]	78N	C11-C12-C13-C14
3	E	1122	78N	C9-C10-C11-C12
3	B	1122[B]	78N	C4-C5-C6-C7
3	C	1124[B]	78N	C4-C5-C6-C7
3	D	1128[B]	78N	C7-C8-O16-C17
2	C	1123	78M	O19-C18-C20-O21
3	A	1126	78N	O20-C18-C19-O22
3	B	1122[B]	78N	O20-C18-C19-O22
3	B	1123	78N	O20-C18-C19-O22
3	D	1128[A]	78N	O20-C18-C19-O22
3	D	1127	78N	C11-C10-C9-C1
3	D	1128[B]	78N	O15-C8-O16-C17
3	C	1126	78N	O16-C17-C18-O20
3	C	1127[B]	78N	C10-C11-C12-C13
2	A	1123	78M	C4-C5-C6-C7
3	C	1126	78N	O16-C17-C18-C19
3	C	1124[B]	78N	C3-C4-C5-C6
2	A	1122	78M	C4-C5-C6-C7
3	C	1125	78N	C11-C10-C9-C1
3	A	1126	78N	C9-C10-C11-C12
3	C	1125	78N	C9-C10-C11-C12
3	D	1127	78N	C10-C11-C12-C13
2	C	1122	78M	C10-C11-C12-C13
2	A	1123	78M	C12-C13-C14-C15
2	A	1124	78M	C4-C5-C6-C7
2	A	1123	78M	C11-C12-C13-C14
2	A	1124	78M	C2-C3-C4-C5
2	C	1123	78M	C3-C4-C5-C6
3	B	1123	78N	C2-C3-C4-C5
3	C	1124[B]	78N	C2-C3-C4-C5
3	C	1127[B]	78N	C2-C3-C4-C5
3	A	1126	78N	C3-C4-C5-C6
3	C	1124[A]	78N	C4-C5-C6-C7
5	D	1123	FLC	OHB-CB-CG-CGC
2	A	1122	78M	C9-C10-C11-C12
3	E	1122	78N	C10-C11-C12-C13
3	C	1124[B]	78N	C12-C13-C14-C15

*Continued on next page...*



*Continued from previous page...*

Mol	Chain	Res	Type	Atoms
2	A	1125	78M	C2-C1-O2-C17
3	D	1128[B]	78N	C11-C12-C13-C14
3	E	1122	78N	C12-C13-C14-C15
2	C	1123	78M	C2-C3-C4-C5
3	B	1121	78N	O16-C17-C18-C19
2	A	1124	78M	C12-C13-C14-C15
3	E	1122	78N	O20-C18-C19-O22
5	D	1123	FLC	CBC-CB-CG-CGC
3	A	1126	78N	C11-C10-C9-C1
3	B	1121	78N	C3-C4-C5-C6
2	A	1124	78M	C10-C11-C12-C13
3	B	1121	78N	C10-C11-C12-C13
3	B	1123	78N	C4-C5-C6-C7
3	D	1127	78N	C11-C12-C13-C14
3	C	1124[A]	78N	C3-C4-C5-C6
3	D	1128[A]	78N	C3-C4-C5-C6
3	E	1122	78N	C7-C8-O16-C17
3	B	1121	78N	C2-C3-C4-C5
3	D	1128[A]	78N	C4-C5-C6-C7
2	A	1125	78M	O1-C1-O2-C17
3	A	1126	78N	C4-C5-C6-C7
2	A	1125	78M	C12-C13-C14-C15
3	B	1121	78N	C9-C10-C11-C12
3	C	1127[A]	78N	C10-C11-C12-C13
2	A	1124	78M	O2-C17-C18-O19
2	D	1125	78M	O2-C17-C18-O19
5	D	1123	FLC	CB-CG-CGC-OG2
3	D	1128[B]	78N	C4-C5-C6-C7
3	E	1122	78N	O15-C8-O16-C17
2	C	1123	78M	O2-C17-C18-C20
2	D	1125	78M	O2-C17-C18-C20
3	B	1122[A]	78N	O16-C17-C18-C19
3	C	1124[A]	78N	O16-C17-C18-C19
5	D	1123	FLC	CA-CB-CG-CGC
2	C	1122	78M	C9-C10-C11-C12
2	A	1125	78M	C9-C10-C11-C12
2	C	1122	78M	C11-C12-C13-C14
3	D	1128[A]	78N	C12-C13-C14-C15
5	D	1123	FLC	CB-CG-CGC-OG1
3	B	1122[A]	78N	C3-C4-C5-C6
3	B	1122[B]	78N	C2-C1-C9-C10
3	C	1126	78N	C4-C5-C6-C7

*Continued on next page...*

*Continued from previous page...*

Mol	Chain	Res	Type	Atoms
3	D	1127	78N	C5-C6-C7-C8
3	B	1122[A]	78N	C5-C6-C7-C8
3	C	1124[A]	78N	C12-C13-C14-C15
2	C	1123	78M	C7-C8-C9-C10
3	C	1127[B]	78N	C2-C1-C9-C10
3	C	1126	78N	C2-C1-C9-C10
3	C	1124[A]	78N	C2-C3-C4-C5
3	B	1122[B]	78N	C1-C2-C3-C4
2	A	1125	78M	C3-C4-C5-C6
2	C	1122	78M	C12-C13-C14-C15
3	C	1125	78N	C12-C13-C14-C15
3	B	1122[A]	78N	C2-C3-C4-C5
3	B	1123	78N	C11-C10-C9-C1
3	B	1121	78N	C4-C5-C6-C7
2	A	1123	78M	C7-C8-C9-C10
2	A	1122	78M	C7-C8-C9-C10
3	C	1125	78N	C2-C1-C9-C10
3	D	1128[A]	78N	C1-C2-C3-C4
3	D	1128[B]	78N	C1-C2-C3-C4
2	A	1125	78M	C11-C10-C9-C8
3	B	1121	78N	C1-C2-C3-C4
2	C	1123	78M	C11-C10-C9-C8
3	C	1126	78N	C11-C12-C13-C14
2	C	1122	78M	O2-C1-C2-C3
2	A	1124	78M	C5-C6-C7-C8
2	A	1124	78M	C7-C8-C9-C10
3	B	1122[A]	78N	C2-C1-C9-C10
3	B	1123	78N	C1-C2-C3-C4
3	D	1128[B]	78N	C2-C1-C9-C10
3	D	1127	78N	C6-C7-C8-O16
3	D	1128[B]	78N	C3-C4-C5-C6
3	A	1126	78N	C6-C7-C8-O16
2	C	1122	78M	C5-C6-C7-C8
2	C	1123	78M	C5-C6-C7-C8
3	B	1122[A]	78N	C1-C2-C3-C4
3	C	1124[B]	78N	C1-C2-C3-C4
3	C	1127[A]	78N	C1-C2-C3-C4
3	C	1127[A]	78N	C2-C1-C9-C10
3	D	1128[A]	78N	C2-C3-C4-C5
3	D	1127	78N	C6-C7-C8-O15
3	A	1126	78N	C6-C7-C8-O15
2	A	1125	78M	C7-C8-C9-C10

*Continued on next page...*

*Continued from previous page...*

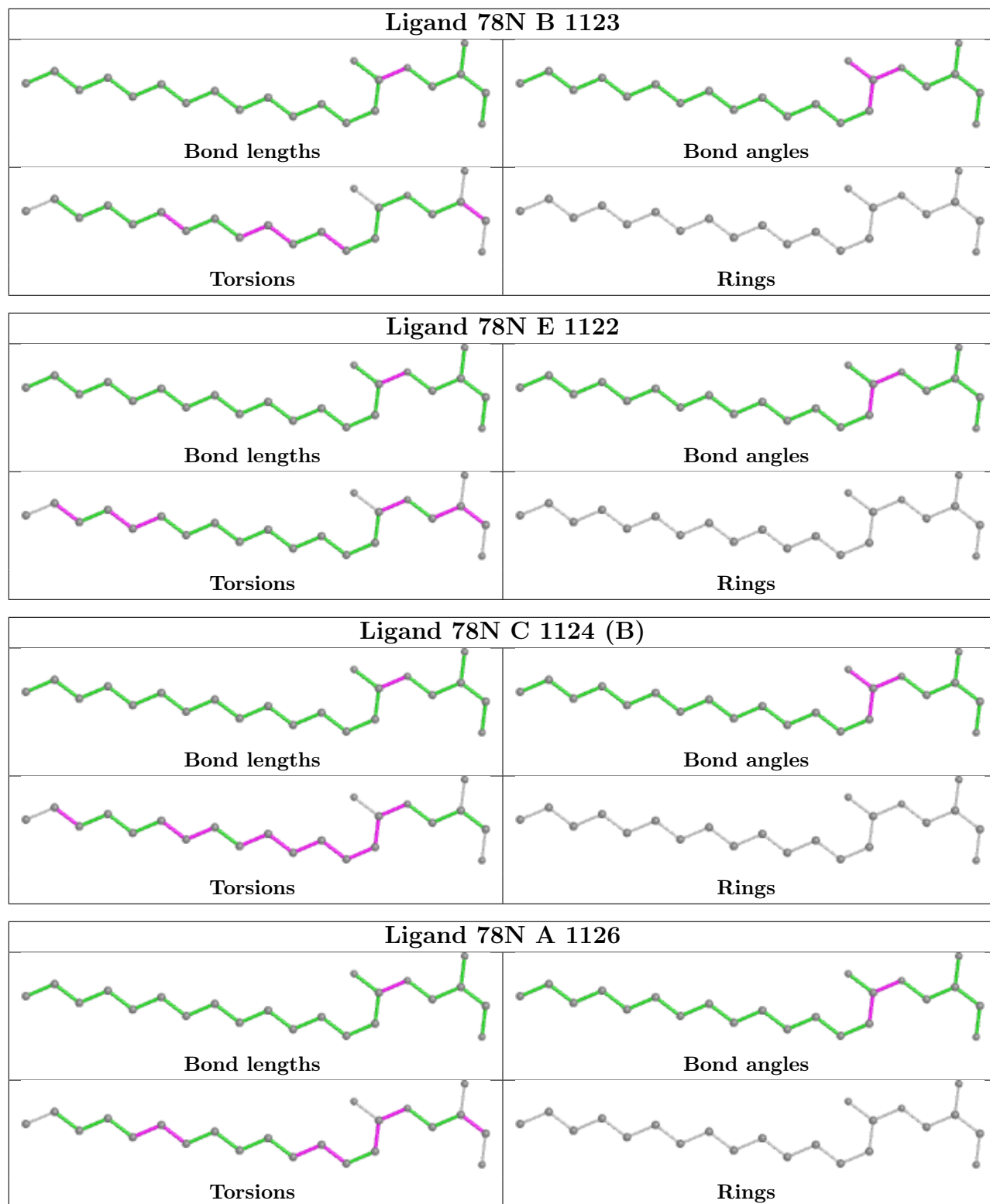
Mol	Chain	Res	Type	Atoms
2	C	1122	78M	O1-C1-C2-C3
3	B	1121	78N	C2-C1-C9-C10
3	C	1125	78N	C6-C7-C8-O16
3	B	1121	78N	C12-C13-C14-C15
3	C	1124[B]	78N	C6-C7-C8-O16
3	C	1124[B]	78N	C2-C1-C9-C10

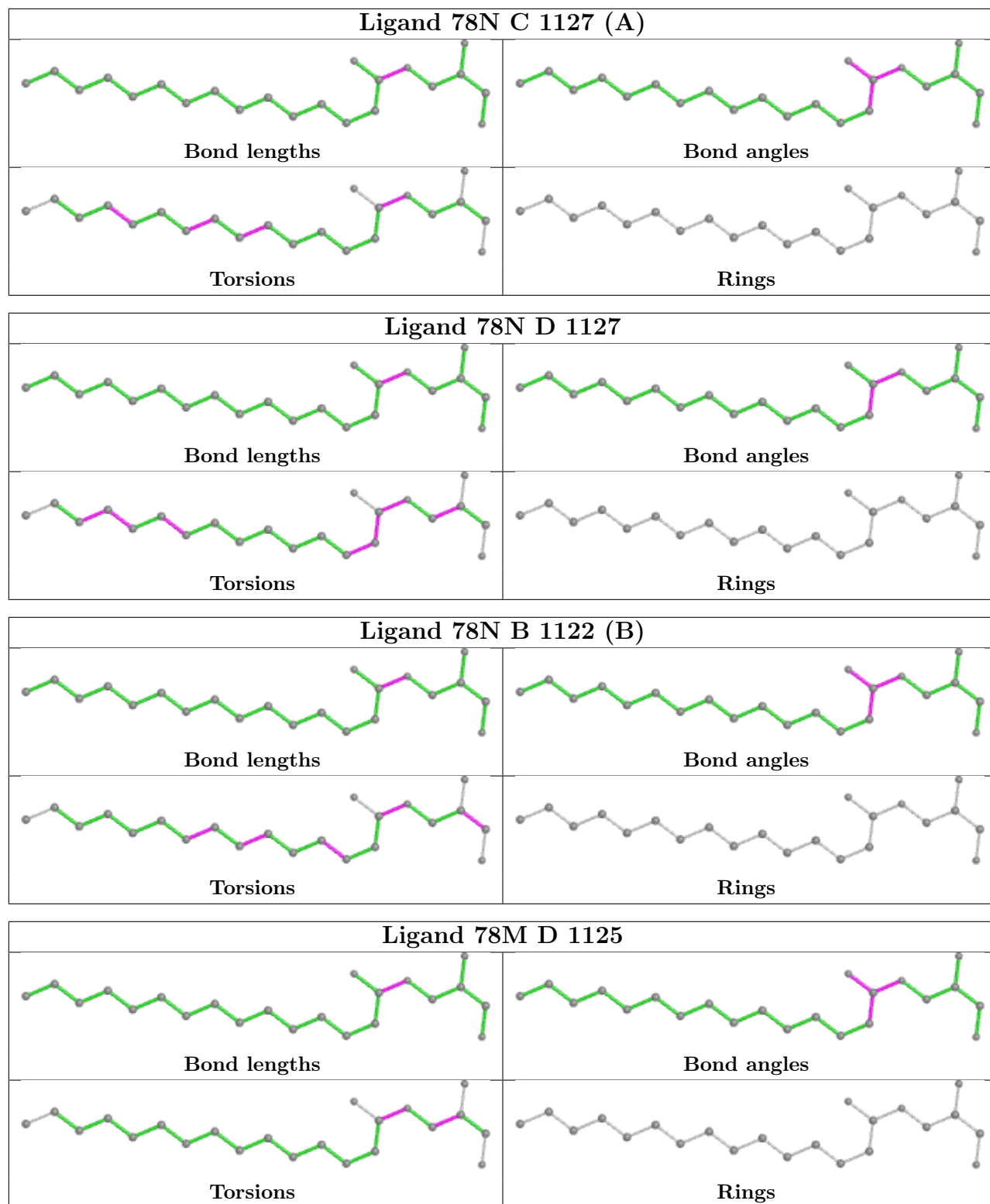
There are no ring outliers.

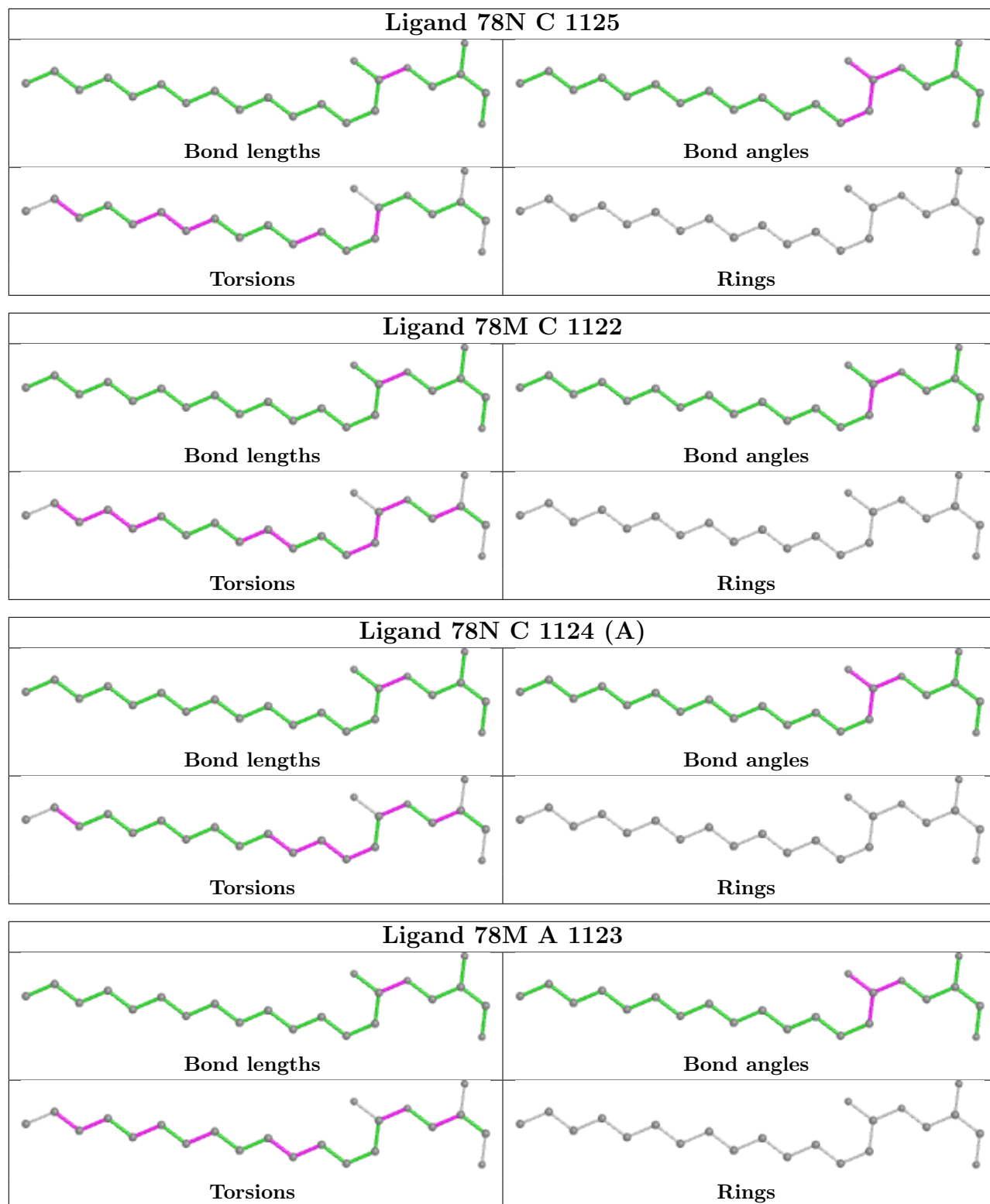
18 monomers are involved in 47 short contacts:

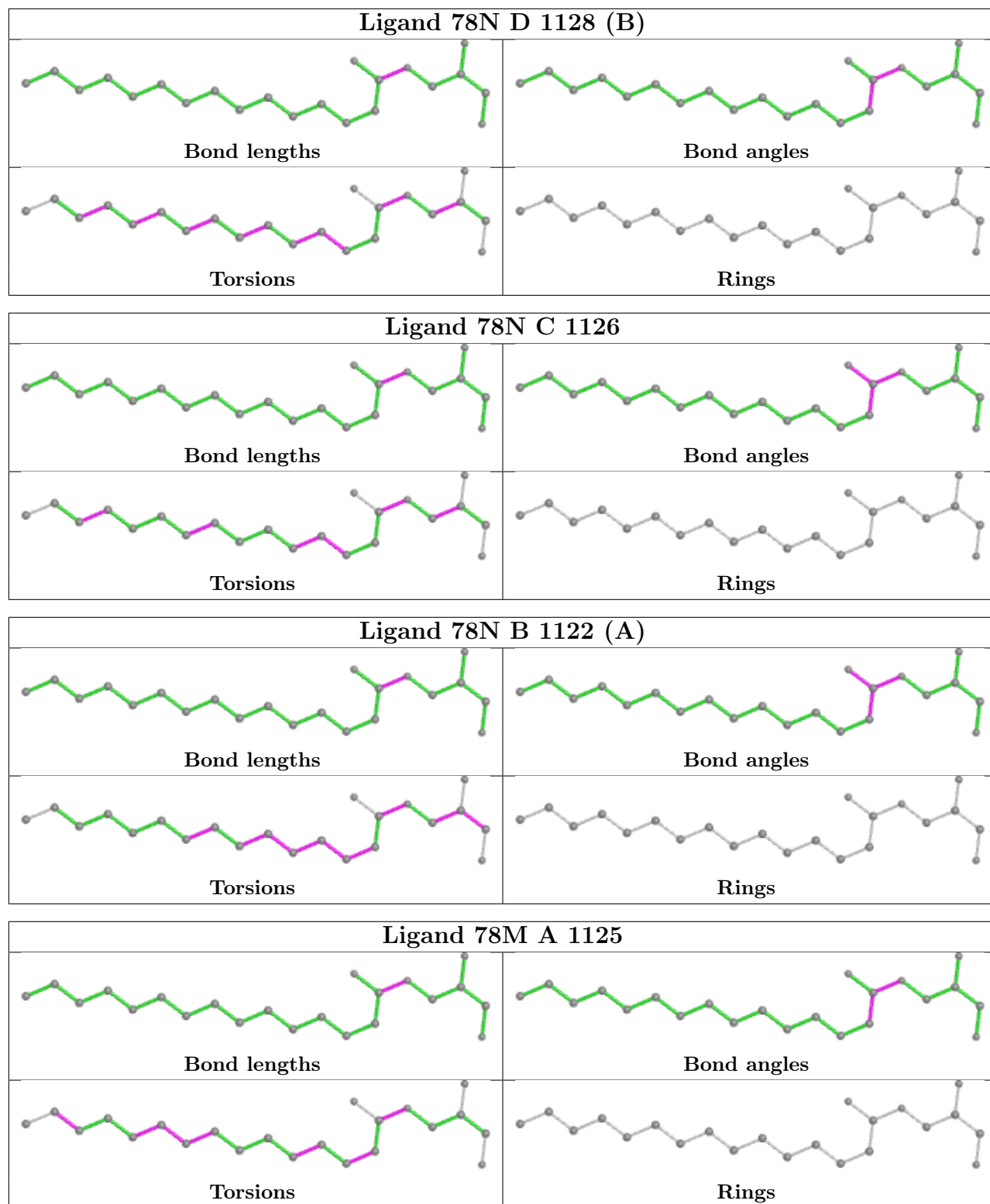
Mol	Chain	Res	Type	Clashes	Symm-Clashes
3	B	1123	78N	6	0
3	E	1122	78N	3	0
3	A	1126	78N	4	0
3	D	1127	78N	1	0
3	B	1122[B]	78N	6	0
2	D	1125	78M	1	0
3	C	1125	78N	2	0
2	C	1122	78M	3	0
2	A	1123	78M	2	0
3	D	1128[B]	78N	1	0
3	C	1126	78N	5	0
3	B	1122[A]	78N	1	0
2	A	1125	78M	2	0
2	C	1123	78M	6	0
2	A	1122	78M	1	0
2	A	1124	78M	3	0
3	B	1121	78N	7	0
3	C	1127[B]	78N	2	0

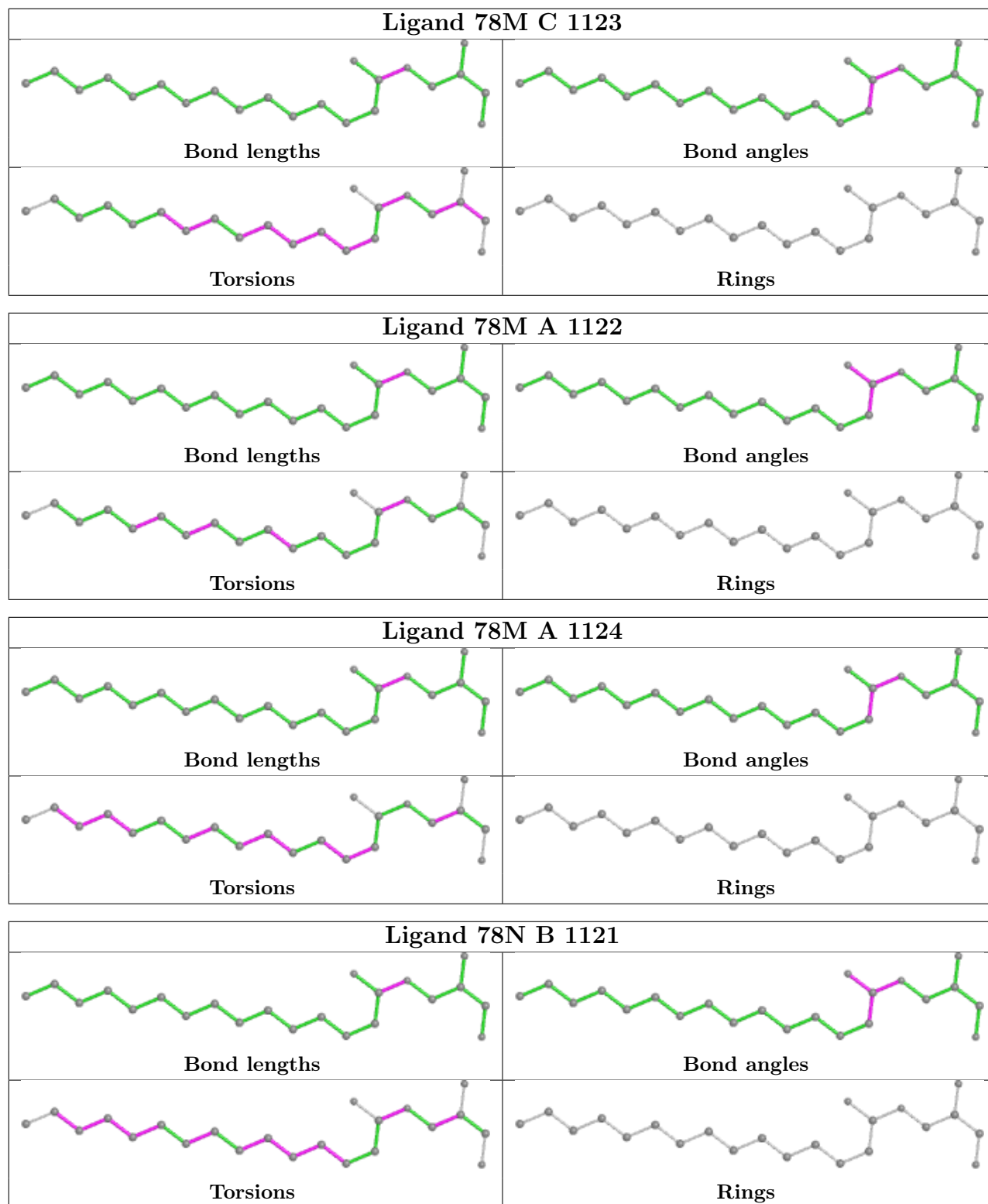
The following is a two-dimensional graphical depiction of Mogul quality analysis of bond lengths, bond angles, torsion angles, and ring geometry for all instances of the Ligand of Interest. In addition, ligands with molecular weight > 250 and outliers as shown on the validation Tables will also be included. For torsion angles, if less than 5% of the Mogul distribution of torsion angles is within 10 degrees of the torsion angle in question, then that torsion angle is considered an outlier. Any bond that is central to one or more torsion angles identified as an outlier by Mogul will be highlighted in the graph. For rings, the root-mean-square deviation (RMSD) between the ring in question and similar rings identified by Mogul is calculated over all ring torsion angles. If the average RMSD is greater than 60 degrees and the minimal RMSD between the ring in question and any Mogul-identified rings is also greater than 60 degrees, then that ring is considered an outlier. The outliers are highlighted in purple. The color gray indicates Mogul did not find sufficient equivalents in the CSD to analyse the geometry.



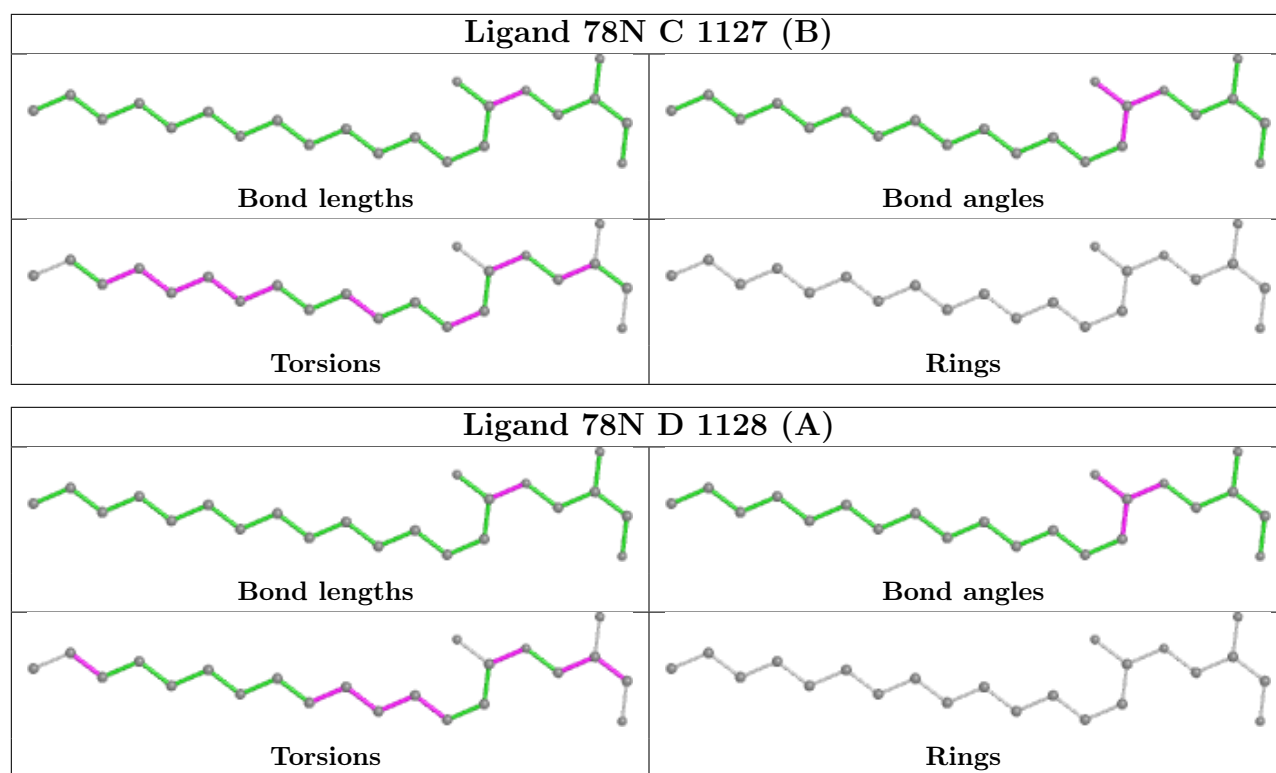












## 5.7 Other polymers [i](#)

There are no such residues in this entry.

## 5.8 Polymer linkage issues [i](#)

There are no chain breaks in this entry.

## 6 Fit of model and data [i](#)

### 6.1 Protein, DNA and RNA chains [i](#)

In the following table, the column labelled '#RSRZ > 2' contains the number (and percentage) of RSRZ outliers, followed by percent RSRZ outliers for the chain as percentile scores relative to all X-ray entries and entries of similar resolution. The OWAB column contains the minimum, median, 95<sup>th</sup> percentile and maximum values of the occupancy-weighted average B-factor per residue. The column labelled 'Q < 0.9' lists the number of (and percentage) of residues with an average occupancy less than 0.9.

Mol	Chain	Analysed	<RSRZ>	#RSRZ > 2	OWAB(Å <sup>2</sup> )	Q < 0.9
1	A	116/130 (89%)	0.64	9 (7%) 13 16	28, 41, 116, 153	0
1	B	98/130 (75%)	0.47	4 (4%) 37 42	26, 39, 101, 147	0
1	C	93/130 (71%)	0.68	5 (5%) 25 31	27, 41, 121, 156	0
1	D	108/130 (83%)	0.01	2 (1%) 66 72	29, 42, 78, 132	0
1	E	90/130 (69%)	0.83	19 (21%) 1 1	31, 57, 148, 201	0
1	F	92/130 (70%)	0.90	18 (19%) 1 1	32, 54, 147, 180	0
All	All	597/780 (76%)	0.57	57 (9%) 8 10	26, 45, 134, 201	0

All (57) RSRZ outliers are listed below:

Mol	Chain	Res	Type	RSRZ
1	E	47	TRP	9.0
1	F	119	HIS	8.0
1	F	118	SER	7.5
1	E	21	LEU	7.3
1	F	120	PHE	6.7
1	F	117	TRP	6.5
1	F	31	PHE	6.5
1	E	24	ALA	6.4
1	A	86	TYR	6.2
1	E	25	TRP	6.2
1	F	36	VAL	6.0
1	A	84	SER	5.8
1	F	32	ARG	5.4
1	C	31	PHE	5.3
1	E	48	LEU	5.1
1	E	45	ALA	4.9
1	C	84	SER	4.7
1	E	49	ASP	4.5
1	F	33	GLN	4.4

*Continued on next page...*

*Continued from previous page...*

Mol	Chain	Res	Type	RSRZ
1	C	86	TYR	4.4
1	B	23	ALA	4.3
1	A	9	ARG	4.1
1	C	32	ARG	4.0
1	F	38	VAL	4.0
1	F	39	LEU	3.8
1	E	22	ARG	3.8
1	D	84	SER	3.7
1	F	30	ALA	3.4
1	E	26	ILE	3.3
1	E	120	PHE	3.2
1	F	47	TRP	3.1
1	B	27	ASN	3.1
1	F	43	VAL	3.0
1	A	89	LEU	3.0
1	E	20	GLY	3.0
1	F	34	GLU	3.0
1	F	50	VAL	2.9
1	E	23	ALA	2.6
1	A	83	GLY	2.6
1	E	88	GLU	2.6
1	E	50	VAL	2.5
1	E	89	LEU	2.5
1	F	35	GLY	2.5
1	B	24	ALA	2.5
1	E	42	VAL	2.5
1	C	85	GLU	2.5
1	D	85	GLU	2.4
1	F	40	LEU	2.4
1	E	40	LEU	2.3
1	A	59	ILE	2.3
1	B	84	SER	2.3
1	E	119	HIS	2.2
1	A	110	ILE	2.2
1	F	49	ASP	2.1
1	A	7	PHE	2.1
1	A	85	GLU	2.1
1	E	86	TYR	2.0

## 6.2 Non-standard residues in protein, DNA, RNA chains

There are no non-standard protein/DNA/RNA residues in this entry.

### 6.3 Carbohydrates [i](#)

There are no monosaccharides in this entry.

### 6.4 Ligands [i](#)

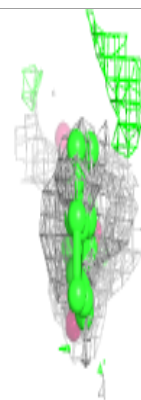
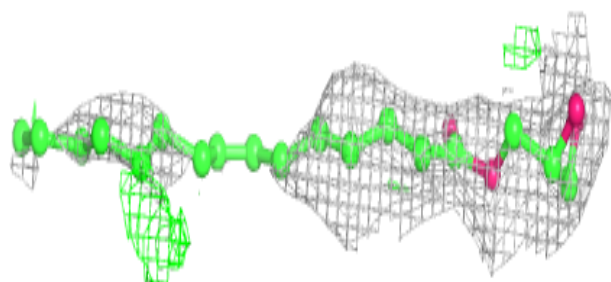
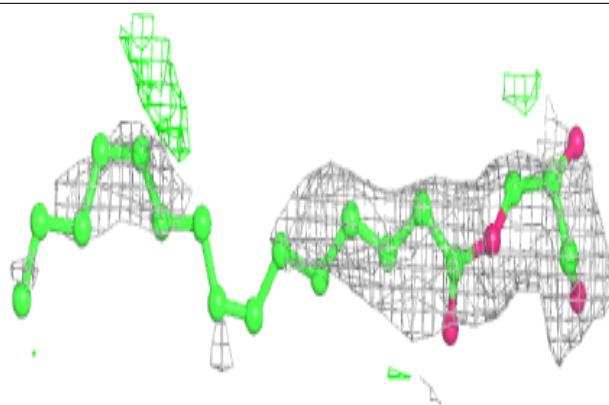
In the following table, the Atoms column lists the number of modelled atoms in the group and the number defined in the chemical component dictionary. The B-factors column lists the minimum, median, 95<sup>th</sup> percentile and maximum values of B factors of atoms in the group. The column labelled 'Q< 0.9' lists the number of atoms with occupancy less than 0.9.

Mol	Type	Chain	Res	Atoms	RSCC	RSR	B-factors(Å <sup>2</sup> )	Q<0.9
3	78N	C	1127[A]	22/22	0.54	0.48	47,82,92,95	22
3	78N	C	1127[B]	22/22	0.54	0.48	43,82,92,95	22
3	78N	E	1122	22/22	0.54	0.41	85,96,112,118	0
2	78M	C	1122	22/22	0.69	0.26	61,106,127,128	0
3	78N	B	1122[A]	22/22	0.75	0.30	37,65,93,95	22
3	78N	B	1122[B]	22/22	0.75	0.30	58,87,94,94	22
3	78N	C	1125	22/22	0.75	0.34	54,75,91,98	0
2	78M	A	1124	22/22	0.76	0.27	68,101,120,127	0
2	78M	C	1123	22/22	0.76	0.41	80,98,114,122	0
3	78N	B	1121	22/22	0.76	0.30	67,83,93,98	0
3	78N	D	1128[B]	22/22	0.79	0.27	33,67,80,82	22
3	78N	D	1128[A]	22/22	0.79	0.27	46,64,78,83	22
2	78M	A	1123	22/22	0.80	0.26	86,94,108,116	0
2	78M	D	1125	22/22	0.81	0.19	50,72,81,87	0
4	NA	D	1122	1/1	0.82	0.50	65,65,65,65	0
5	FLC	D	1123	13/13	0.82	0.20	60,84,96,97	0
3	78N	D	1127	22/22	0.83	0.26	63,74,89,107	0
3	78N	C	1126	22/22	0.83	0.21	65,88,99,103	0
2	78M	A	1125	22/22	0.84	0.26	58,81,92,95	0
3	78N	B	1123	22/22	0.84	0.21	66,89,96,109	0
3	78N	A	1126	22/22	0.84	0.23	62,82,98,101	0
3	78N	C	1124[A]	22/22	0.86	0.34	43,60,67,68	22
3	78N	C	1124[B]	22/22	0.86	0.34	37,55,66,69	22
2	78M	A	1122	22/22	0.87	0.23	52,81,109,113	0
5	FLC	D	1124	13/13	0.87	0.21	54,90,107,119	0
6	ZN	D	1126	1/1	0.98	0.11	40,40,40,40	1

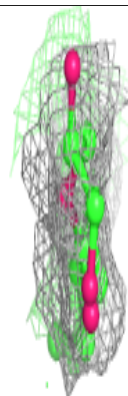
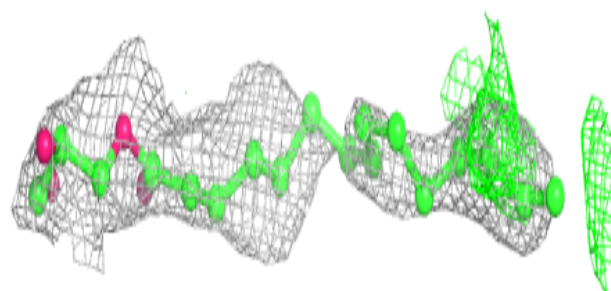
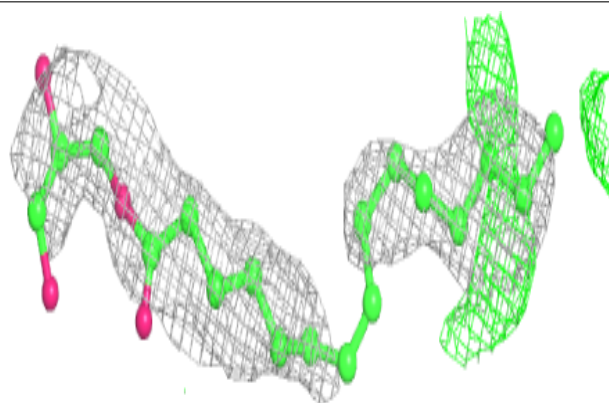
The following is a graphical depiction of the model fit to experimental electron density of all instances of the Ligand of Interest. In addition, ligands with molecular weight > 250 and outliers as shown on the geometry validation Tables will also be included. Each fit is shown from different orientation to approximate a three-dimensional view.

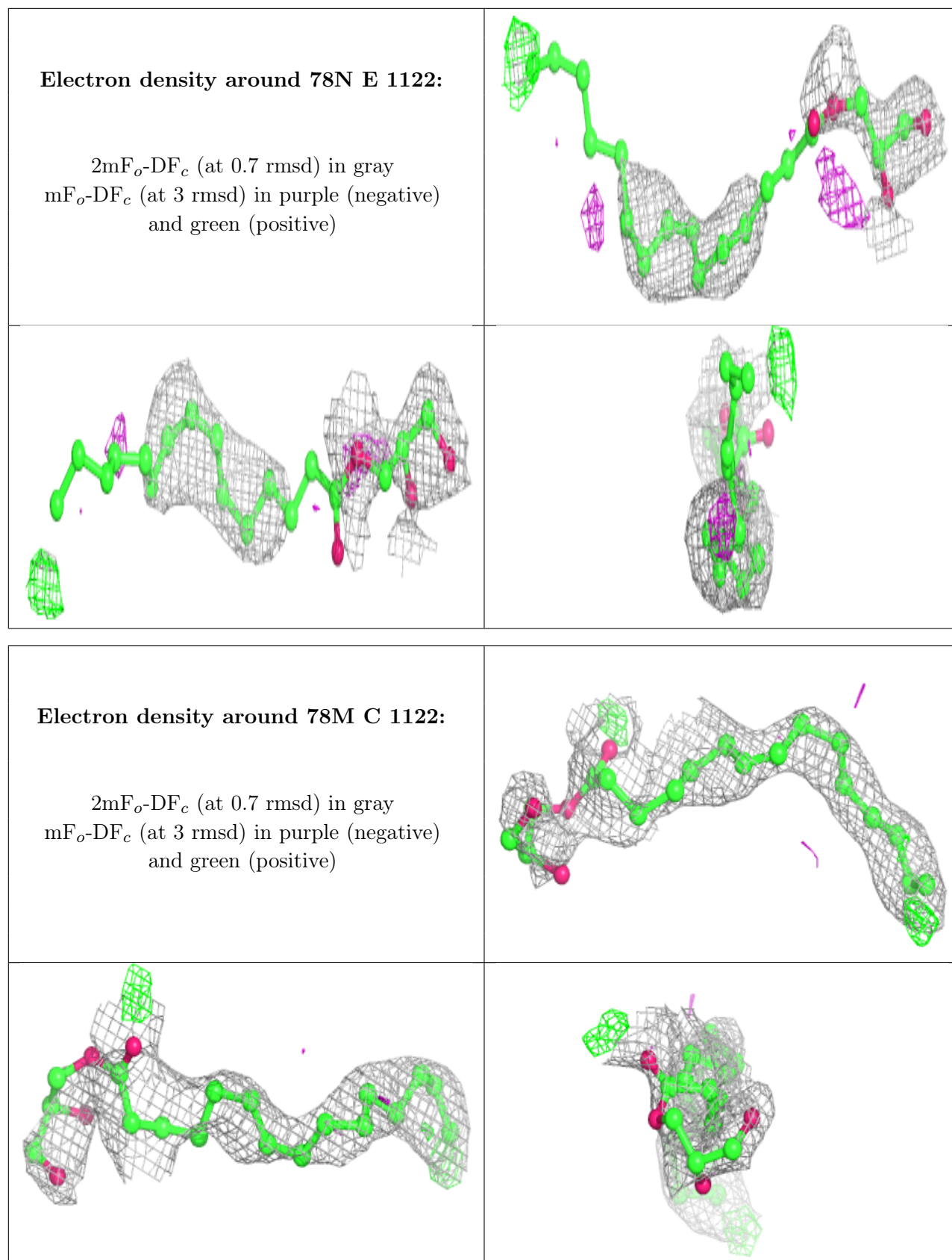
**Electron density around 78N C 1127 (A):**

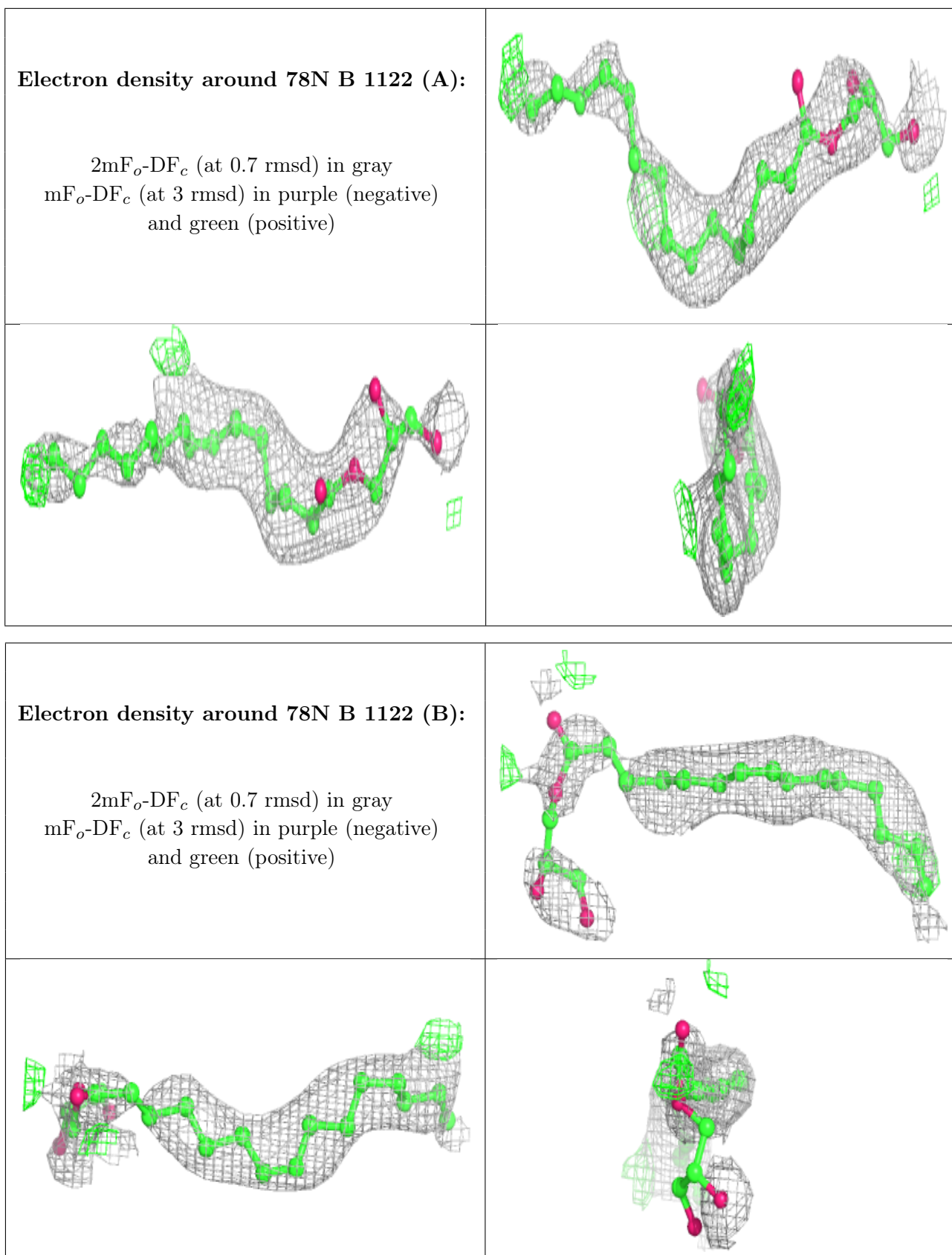
$2mF_o-DF_c$  (at 0.7 rmsd) in gray  
 $mF_o-DF_c$  (at 3 rmsd) in purple (negative)  
and green (positive)

**Electron density around 78N C 1127 (B):**

$2mF_o-DF_c$  (at 0.7 rmsd) in gray  
 $mF_o-DF_c$  (at 3 rmsd) in purple (negative)  
and green (positive)

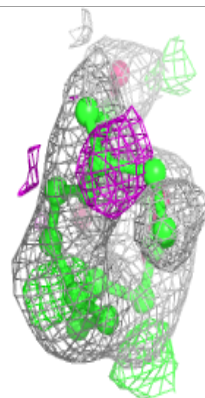
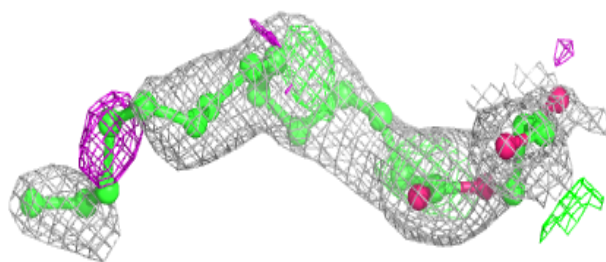
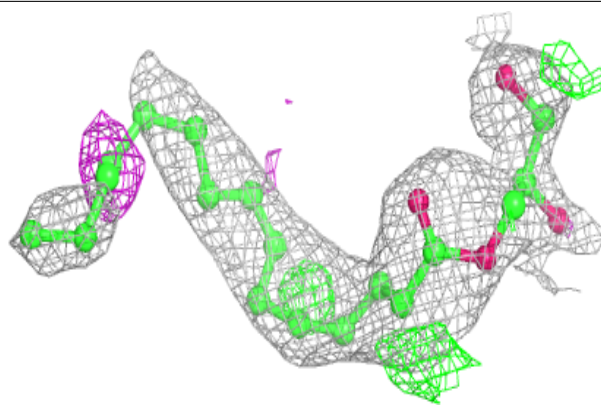




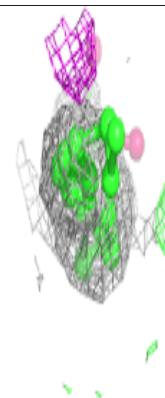
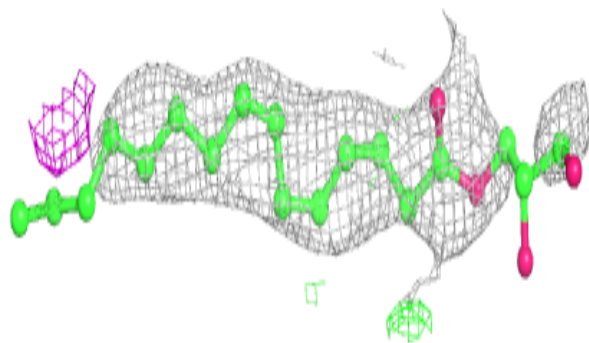
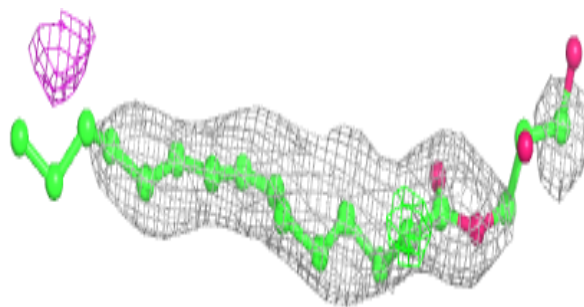


**Electron density around 78N C 1125:**

$2mF_o-DF_c$  (at 0.7 rmsd) in gray  
 $mF_o-DF_c$  (at 3 rmsd) in purple (negative)  
and green (positive)

**Electron density around 78M A 1124:**

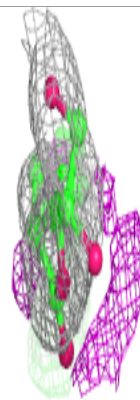
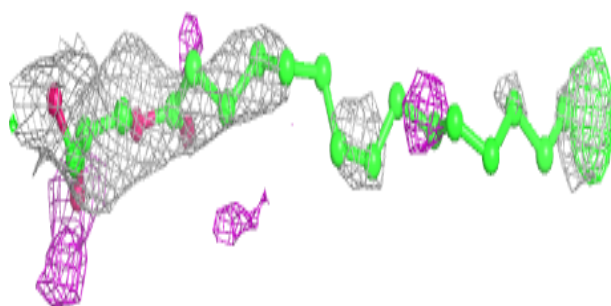
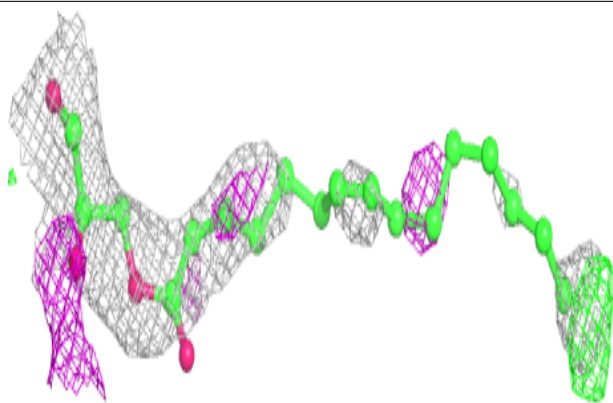
$2mF_o-DF_c$  (at 0.7 rmsd) in gray  
 $mF_o-DF_c$  (at 3 rmsd) in purple (negative)  
and green (positive)



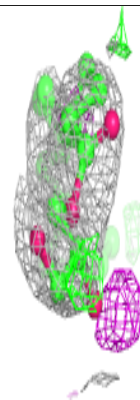
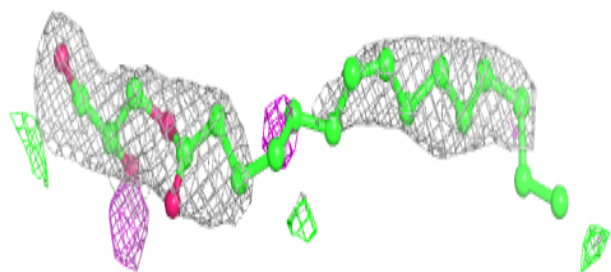
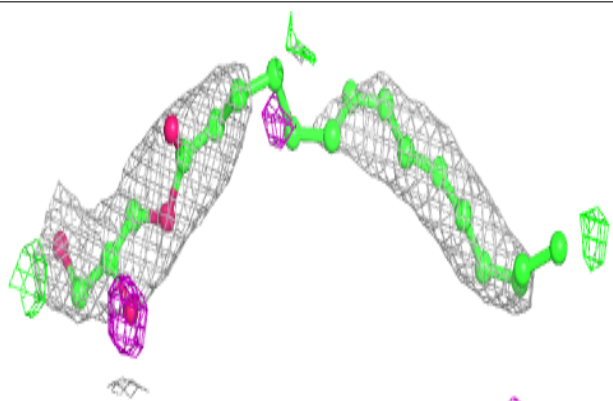


**Electron density around 78M C 1123:**

$2mF_o-DF_c$  (at 0.7 rmsd) in gray  
 $mF_o-DF_c$  (at 3 rmsd) in purple (negative)  
and green (positive)

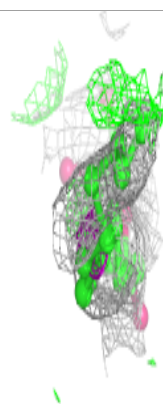
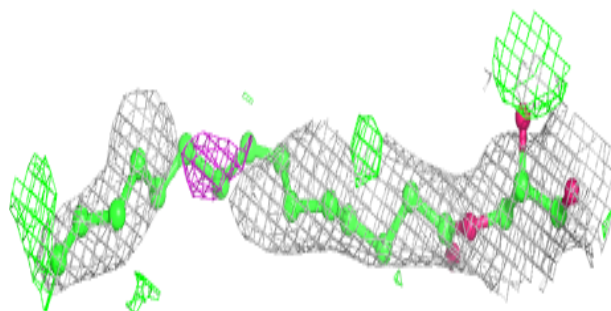
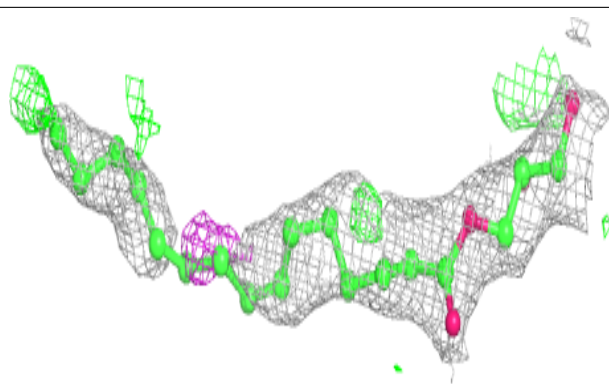
**Electron density around 78N B 1121:**

$2mF_o-DF_c$  (at 0.7 rmsd) in gray  
 $mF_o-DF_c$  (at 3 rmsd) in purple (negative)  
and green (positive)

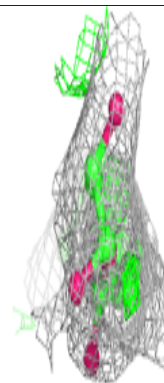
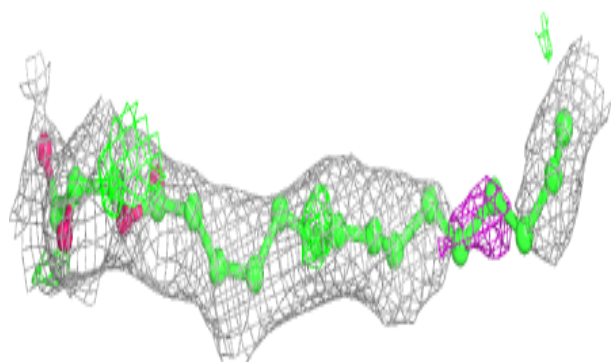
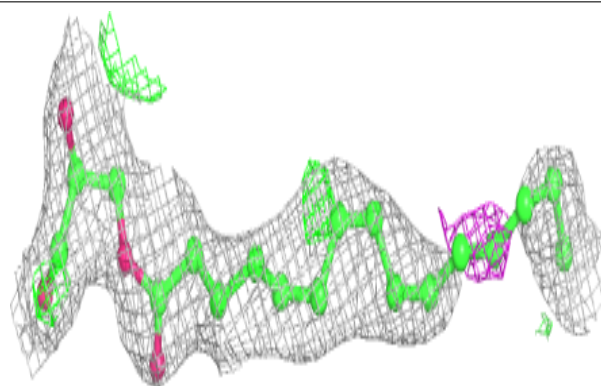


**Electron density around 78N D 1128 (B):**

$2mF_o-DF_c$  (at 0.7 rmsd) in gray  
 $mF_o-DF_c$  (at 3 rmsd) in purple (negative)  
and green (positive)

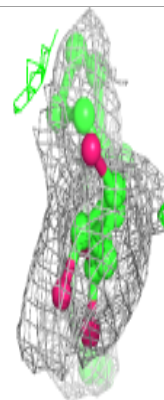
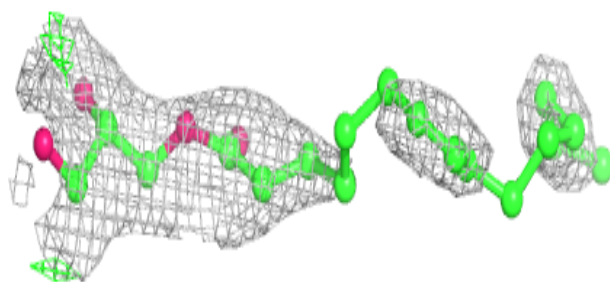
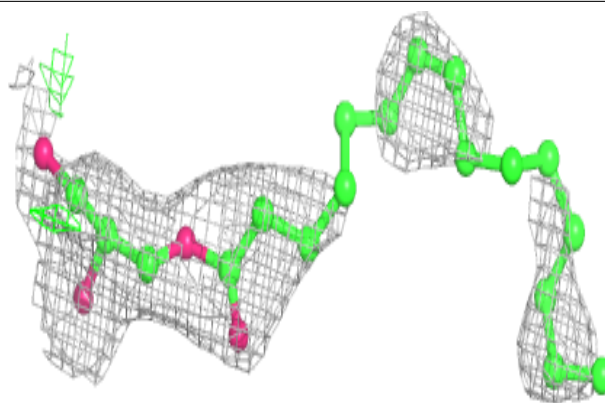
**Electron density around 78N D 1128 (A):**

$2mF_o-DF_c$  (at 0.7 rmsd) in gray  
 $mF_o-DF_c$  (at 3 rmsd) in purple (negative)  
and green (positive)

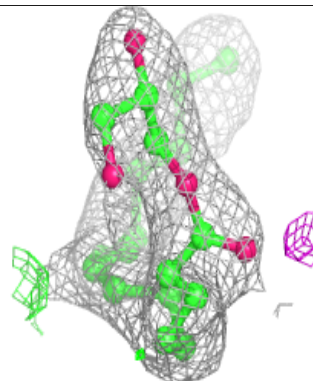
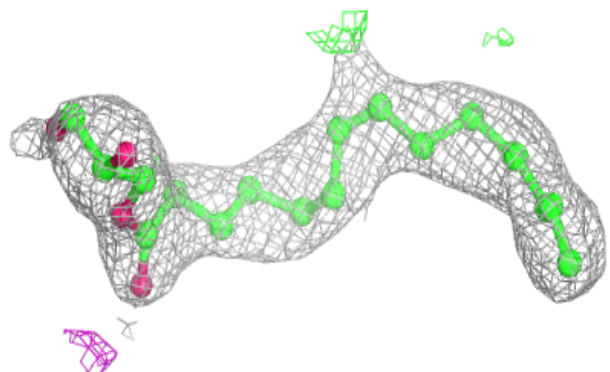
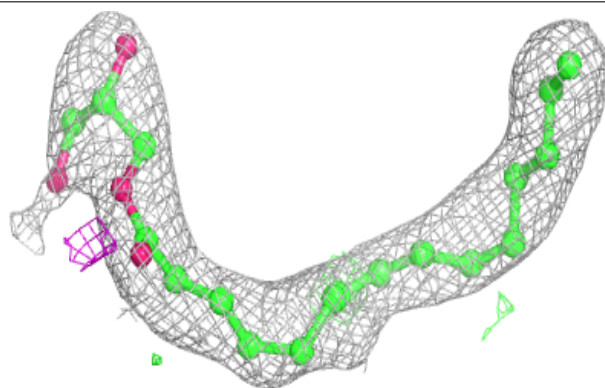


**Electron density around 78M A 1123:**

$2mF_o-DF_c$  (at 0.7 rmsd) in gray  
 $mF_o-DF_c$  (at 3 rmsd) in purple (negative)  
and green (positive)

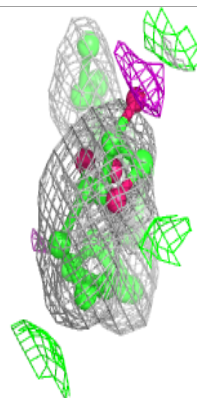
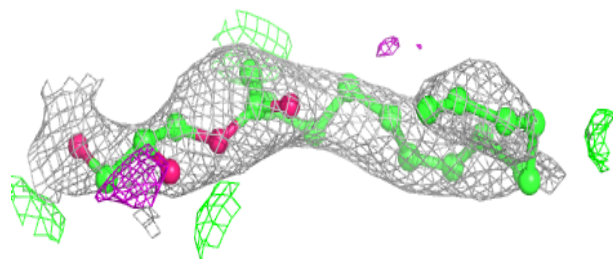
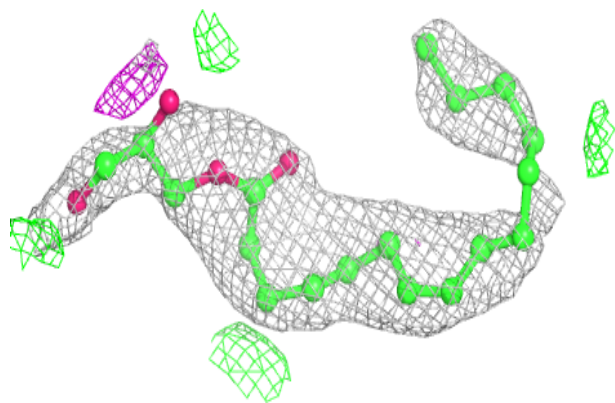
**Electron density around 78M D 1125:**

$2mF_o-DF_c$  (at 0.7 rmsd) in gray  
 $mF_o-DF_c$  (at 3 rmsd) in purple (negative)  
and green (positive)

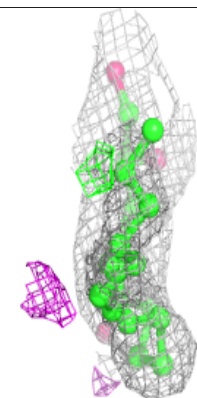
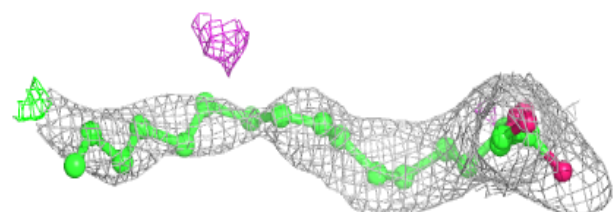
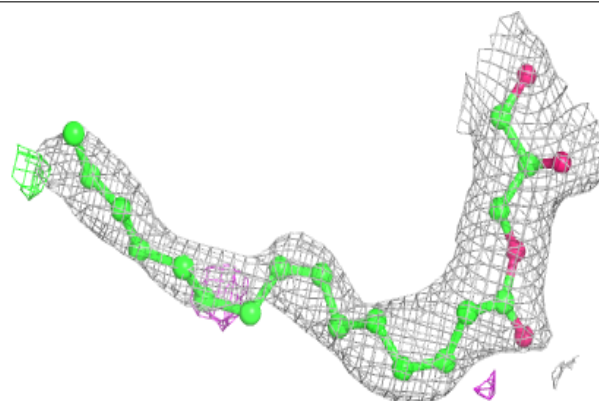


**Electron density around 78N D 1127:**

$2mF_o-DF_c$  (at 0.7 rmsd) in gray  
 $mF_o-DF_c$  (at 3 rmsd) in purple (negative)  
and green (positive)

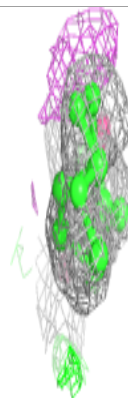
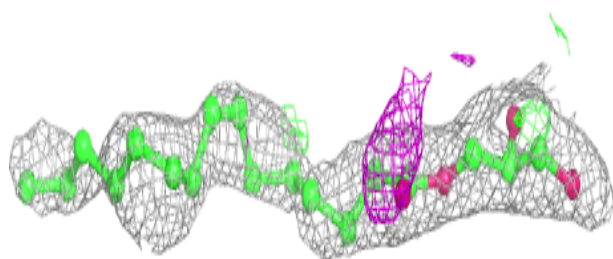
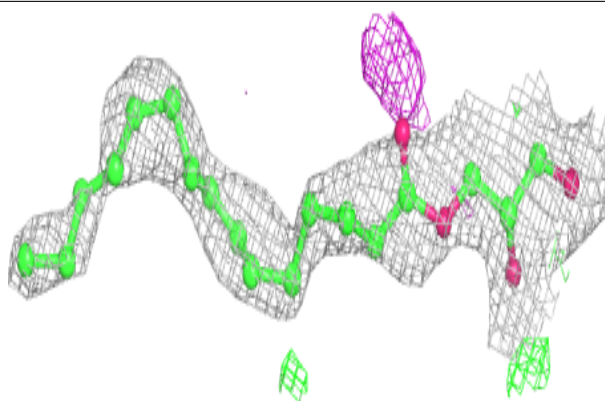
**Electron density around 78N C 1126:**

$2mF_o-DF_c$  (at 0.7 rmsd) in gray  
 $mF_o-DF_c$  (at 3 rmsd) in purple (negative)  
and green (positive)

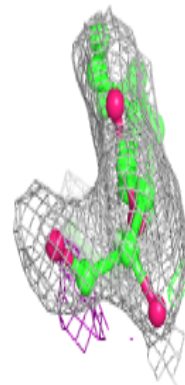
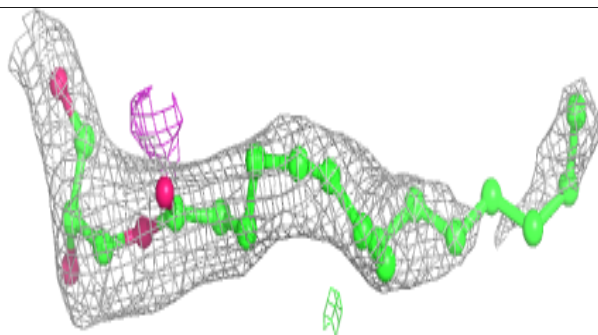
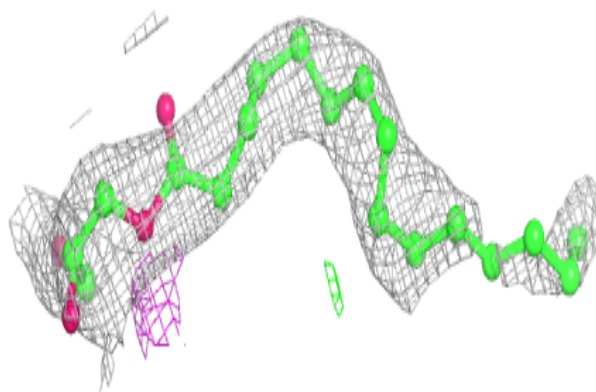


**Electron density around 78M A 1125:**

$2mF_o-DF_c$  (at 0.7 rmsd) in gray  
 $mF_o-DF_c$  (at 3 rmsd) in purple (negative)  
and green (positive)

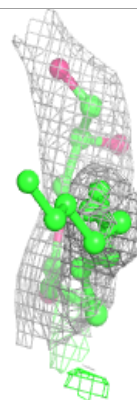
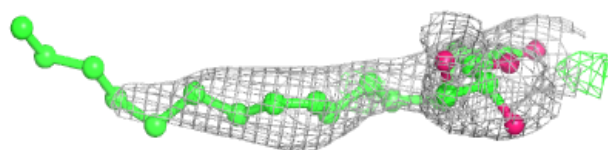
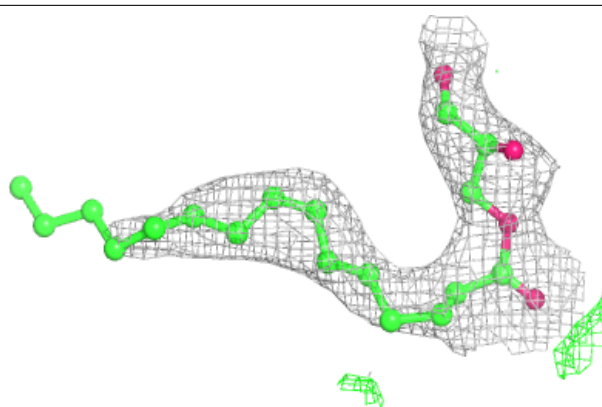
**Electron density around 78N B 1123:**

$2mF_o-DF_c$  (at 0.7 rmsd) in gray  
 $mF_o-DF_c$  (at 3 rmsd) in purple (negative)  
and green (positive)

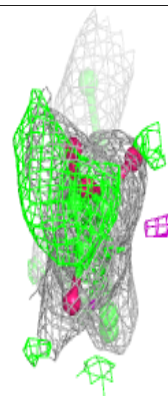
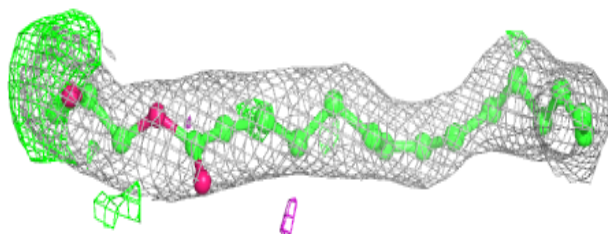
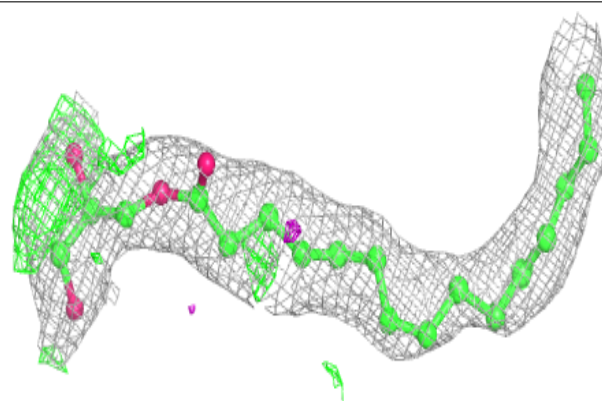


**Electron density around 78N A 1126:**

$2mF_o-DF_c$  (at 0.7 rmsd) in gray  
 $mF_o-DF_c$  (at 3 rmsd) in purple (negative)  
and green (positive)

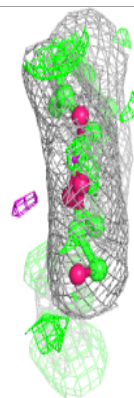
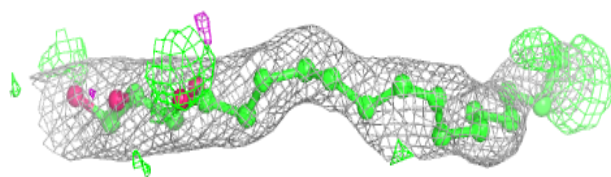
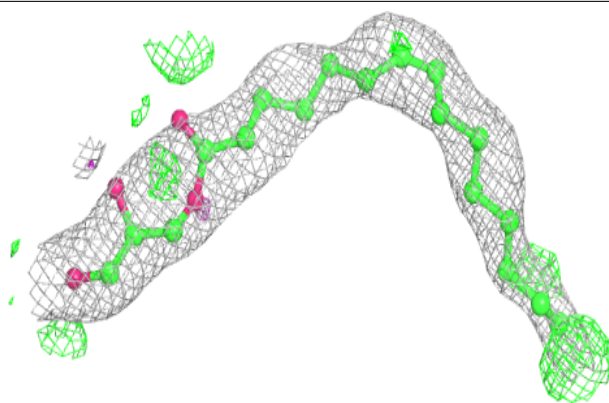
**Electron density around 78N C 1124 (A):**

$2mF_o-DF_c$  (at 0.7 rmsd) in gray  
 $mF_o-DF_c$  (at 3 rmsd) in purple (negative)  
and green (positive)

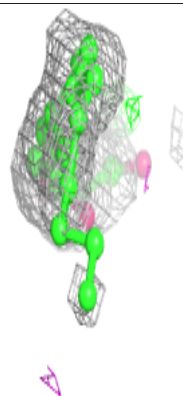
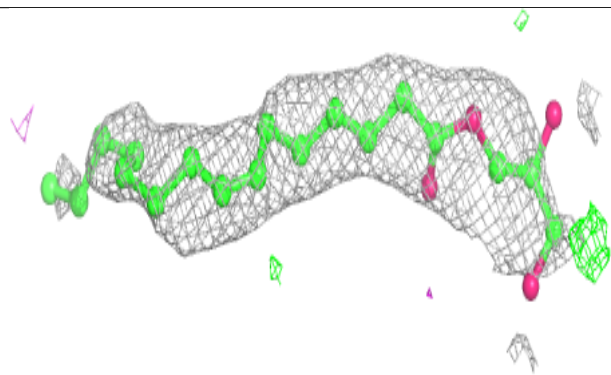
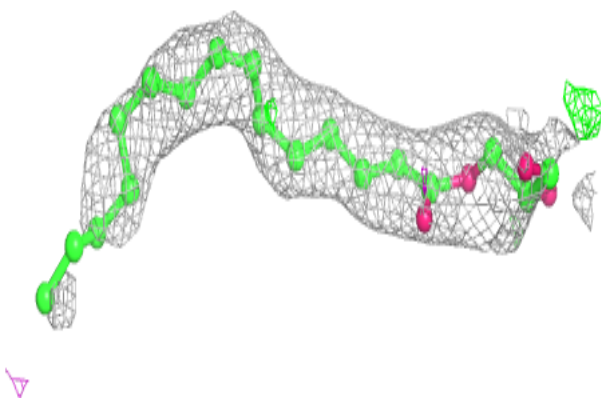


**Electron density around 78N C 1124 (B):**

$2mF_o-DF_c$  (at 0.7 rmsd) in gray  
 $mF_o-DF_c$  (at 3 rmsd) in purple (negative)  
and green (positive)

**Electron density around 78M A 1122:**

$2mF_o-DF_c$  (at 0.7 rmsd) in gray  
 $mF_o-DF_c$  (at 3 rmsd) in purple (negative)  
and green (positive)



## 6.5 Other polymers [i](#)

There are no such residues in this entry.