



Full wwPDB X-ray Structure Validation Report ⓘ

Nov 2, 2023 – 12:18 PM EDT

PDB ID : 8D3G
Title : Crystal structure of human Apoptosis-Inducing Factor (AIF) W196A mutant complexed with 6-chloroquinolin-4-amine
Authors : Brosey, C.A.; Tainer, J.A.
Deposited on : 2022-06-01
Resolution : 2.58 Å (reported)

This is a Full wwPDB X-ray Structure Validation Report for a publicly released PDB entry.

We welcome your comments at validation@mail.wwpdb.org

A user guide is available at

<https://www.wwpdb.org/validation/2017/XrayValidationReportHelp>

with specific help available everywhere you see the ⓘ symbol.

The types of validation reports are described at

<http://www.wwpdb.org/validation/2017/FAQs#types>.

The following versions of software and data (see [references ⓘ](#)) were used in the production of this report:

MolProbity : 4.02b-467
Mogul : 1.8.5 (274361), CSD as541be (2020)
Xtriage (Phenix) : 1.13
EDS : 2.36
buster-report : 1.1.7 (2018)
Percentile statistics : 20191225.v01 (using entries in the PDB archive December 25th 2019)
Refmac : 5.8.0158
CCP4 : 7.0.044 (Gargrove)
Ideal geometry (proteins) : Engh & Huber (2001)
Ideal geometry (DNA, RNA) : Parkinson et al. (1996)
Validation Pipeline (wwPDB-VP) : 2.36

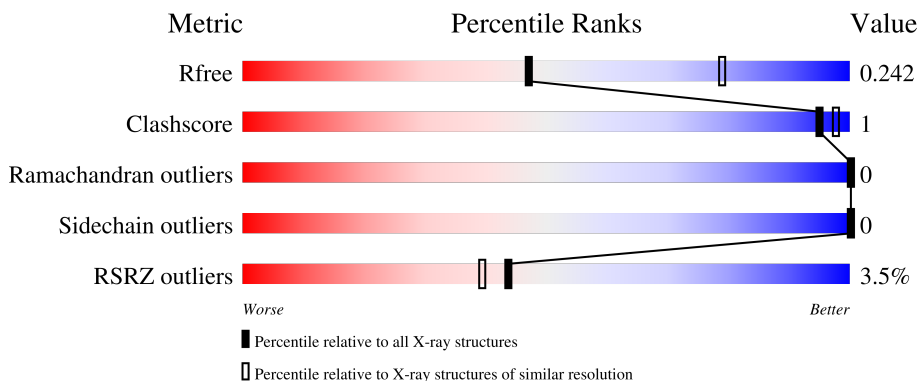
1 Overall quality at a glance

The following experimental techniques were used to determine the structure:

X-RAY DIFFRACTION

The reported resolution of this entry is 2.58 Å.

Percentile scores (ranging between 0-100) for global validation metrics of the entry are shown in the following graphic. The table shows the number of entries on which the scores are based.



Metric	Whole archive (#Entries)	Similar resolution (#Entries, resolution range(Å))
R_{free}	130704	3676 (2.60-2.56)
Clashscore	141614	4049 (2.60-2.56)
Ramachandran outliers	138981	3979 (2.60-2.56)
Sidechain outliers	138945	3979 (2.60-2.56)
RSRZ outliers	127900	3614 (2.60-2.56)

The table below summarises the geometric issues observed across the polymeric chains and their fit to the electron density. The red, orange, yellow and green segments of the lower bar indicate the fraction of residues that contain outliers for ≥ 3 , 2, 1 and 0 types of geometric quality criteria respectively. A grey segment represents the fraction of residues that are not modelled. The numeric value for each fraction is indicated below the corresponding segment, with a dot representing fractions $\leq 5\%$. The upper red bar (where present) indicates the fraction of residues that have poor fit to the electron density. The numeric value is given above the bar.

Mol	Chain	Length	Quality of chain
1	A	543	 3% 77% 21%
1	B	543	 3% 77% 20%

2 Entry composition

There are 5 unique types of molecules in this entry. The entry contains 13024 atoms, of which 6358 are hydrogens and 0 are deuteriums.

In the tables below, the ZeroOcc column contains the number of atoms modelled with zero occupancy, the AltConf column contains the number of residues with at least one atom in alternate conformation and the Trace column contains the number of residues modelled with at most 2 atoms.

- Molecule 1 is a protein called Apoptosis-inducing factor 1, mitochondrial.

Mol	Chain	Residues	Atoms						ZeroOcc	AltConf	Trace
			Total	C	H	N	O	S			
1	A	431	6358	2050	3148	567	582	11	0	0	0
1	B	432	6343	2051	3128	569	584	11	0	1	0

There are 16 discrepancies between the modelled and reference sequences:

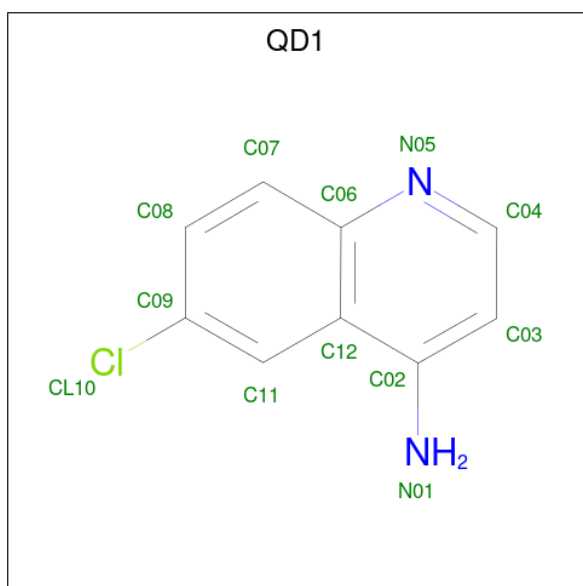
Chain	Residue	Modelled	Actual	Comment	Reference
A	77	MET	-	initiating methionine	UNP O95831
A	196	ALA	TRP	engineered mutation	UNP O95831
A	614	LEU	-	expression tag	UNP O95831
A	615	GLU	-	expression tag	UNP O95831
A	616	VAL	-	expression tag	UNP O95831
A	617	LEU	-	expression tag	UNP O95831
A	618	PHE	-	expression tag	UNP O95831
A	619	GLN	-	expression tag	UNP O95831
B	77	MET	-	initiating methionine	UNP O95831
B	196	ALA	TRP	engineered mutation	UNP O95831
B	614	LEU	-	expression tag	UNP O95831
B	615	GLU	-	expression tag	UNP O95831
B	616	VAL	-	expression tag	UNP O95831
B	617	LEU	-	expression tag	UNP O95831
B	618	PHE	-	expression tag	UNP O95831
B	619	GLN	-	expression tag	UNP O95831

- Molecule 2 is FLAVIN-ADENINE DINUCLEOTIDE (three-letter code: FAD) (formula: $C_{27}H_{33}N_9O_{15}P_2$).



Mol	Chain	Residues	Atoms					ZeroOcc	AltConf	
			Total	C	H	N	O			P
2	A	1	84	27	31	9	15	2	0	0
2	B	1	84	27	31	9	15	2	0	0

- Molecule 3 is 6-chloroquinolin-4-amine (three-letter code: QD1) (formula: $C_9H_7ClN_2$) (labeled as "Ligand of Interest" by depositor).



Mol	Chain	Residues	Atoms				ZeroOcc	AltConf	
			Total	C	Cl	H			N
3	A	1	19	9	1	7	2	0	0

Continued on next page...

Continued from previous page...

Mol	Chain	Residues	Atoms					ZeroOcc	AltConf
3	B	1	Total	C	Cl	H	N	0	0
			19	9	1	7	2		

- Molecule 4 is 1,2-ETHANEDIOL (three-letter code: EDO) (formula: C₂H₆O₂).



Mol	Chain	Residues	Atoms				ZeroOcc	AltConf
4	A	1	Total	C	H	O	0	0
			10	2	6	2		

- Molecule 5 is water.

Mol	Chain	Residues	Atoms		ZeroOcc	AltConf
5	A	64	Total	O	0	0
			64	64		
5	B	43	Total	O	0	0
			43	43		

4 Data and refinement statistics i

Property	Value	Source
Space group	P 21 21 21	Depositor
Cell constants a, b, c, α , β , γ	88.30Å 110.97Å 114.77Å 90.00° 90.00° 90.00°	Depositor
Resolution (Å)	29.33 – 2.58 29.33 – 2.58	Depositor EDS
% Data completeness (in resolution range)	99.7 (29.33-2.58) 99.7 (29.33-2.58)	Depositor EDS
R_{merge}	0.11	Depositor
R_{sym}	(Not available)	Depositor
$\langle I/\sigma(I) \rangle$ ¹	1.97 (at 2.57Å)	Xtrriage
Refinement program	PHENIX 1.18.2_3874	Depositor
R, R_{free}	0.194 , 0.242 0.194 , 0.242	Depositor DCC
R_{free} test set	1798 reflections (4.98%)	wwPDB-VP
Wilson B-factor (Å ²)	51.9	Xtrriage
Anisotropy	0.599	Xtrriage
Bulk solvent k_{sol} (e/Å ³), B_{sol} (Å ²)	0.38 , 45.9	EDS
L-test for twinning ²	$\langle L \rangle = 0.51$, $\langle L^2 \rangle = 0.34$	Xtrriage
Estimated twinning fraction	0.000 for -h,l,k	Xtrriage
F_o, F_c correlation	0.95	EDS
Total number of atoms	13024	wwPDB-VP
Average B, all atoms (Å ²)	65.0	wwPDB-VP

Xtrriage's analysis on translational NCS is as follows: *The largest off-origin peak in the Patterson function is 3.45% of the height of the origin peak. No significant pseudotranslation is detected.*

¹Intensities estimated from amplitudes.

²Theoretical values of $\langle |L| \rangle$, $\langle L^2 \rangle$ for acentric reflections are 0.5, 0.333 respectively for untwinned datasets, and 0.375, 0.2 for perfectly twinned datasets.

5 Model quality [i](#)

5.1 Standard geometry [i](#)

Bond lengths and bond angles in the following residue types are not validated in this section: FAD, QD1, CSX, EDO

The Z score for a bond length (or angle) is the number of standard deviations the observed value is removed from the expected value. A bond length (or angle) with $|Z| > 5$ is considered an outlier worth inspection. RMSZ is the root-mean-square of all Z scores of the bond lengths (or angles).

Mol	Chain	Bond lengths		Bond angles	
		RMSZ	# Z >5	RMSZ	# Z >5
1	A	0.25	0/3263	0.44	0/4423
1	B	0.25	0/3271	0.44	0/4439
All	All	0.25	0/6534	0.44	0/8862

There are no bond length outliers.

There are no bond angle outliers.

There are no chirality outliers.

There are no planarity outliers.

5.2 Too-close contacts [i](#)

In the following table, the Non-H and H(model) columns list the number of non-hydrogen atoms and hydrogen atoms in the chain respectively. The H(added) column lists the number of hydrogen atoms added and optimized by MolProbity. The Clashes column lists the number of clashes within the asymmetric unit, whereas Symm-Clashes lists symmetry-related clashes.

Mol	Chain	Non-H	H(model)	H(added)	Clashes	Symm-Clashes
1	A	3210	3148	3145	8	0
1	B	3215	3128	3123	8	0
2	A	53	31	31	0	0
2	B	53	31	31	0	0
3	A	12	7	0	1	0
3	B	12	7	0	1	0
4	A	4	6	6	0	0
5	A	64	0	0	0	0
5	B	43	0	0	0	0
All	All	6666	6358	6336	16	0

The all-atom clashscore is defined as the number of clashes found per 1000 atoms (including

hydrogen atoms). The all-atom clashscore for this structure is 1.

All (16) close contacts within the same asymmetric unit are listed below, sorted by their clash magnitude.

Atom-1	Atom-2	Interatomic distance (Å)	Clash overlap (Å)
1:B:182:SER:HB3	1:B:187:VAL:HG11	1.73	0.70
1:A:182:SER:HB3	1:A:187:VAL:HG11	1.82	0.61
1:B:182:SER:CB	1:B:187:VAL:HG11	2.31	0.60
1:A:267:LEU:HD11	1:A:306:ILE:HG21	1.85	0.58
1:B:267:LEU:HD11	1:B:306:ILE:HG21	1.89	0.55
1:A:172:ARG:N	1:A:173:PRO:CD	2.73	0.51
1:B:479:GLN:HB2	1:B:495:ILE:HD11	1.94	0.50
1:A:182:SER:CB	1:A:187:VAL:HG11	2.43	0.49
1:B:610:ILE:HG22	1:B:614:LEU:HD11	1.94	0.48
1:B:172:ARG:N	1:B:173:PRO:CD	2.76	0.48
1:B:611:HIS:O	1:B:614:LEU:HD13	2.14	0.48
1:B:310:PHE:HB3	3:B:702:QD1:C11	2.45	0.47
1:A:184:ASP:O	1:A:187:VAL:HG13	2.18	0.44
1:A:585:MET:N	1:A:586:PRO:HD2	2.33	0.43
1:A:479:GLN:HB2	1:A:495:ILE:HD11	2.01	0.42
1:A:310:PHE:HB3	3:A:702:QD1:C11	2.50	0.41

There are no symmetry-related clashes.

5.3 Torsion angles [i](#)

5.3.1 Protein backbone [i](#)

In the following table, the Percentiles column shows the percent Ramachandran outliers of the chain as a percentile score with respect to all X-ray entries followed by that with respect to entries of similar resolution.

The Analysed column shows the number of residues for which the backbone conformation was analysed, and the total number of residues.

Mol	Chain	Analysed	Favoured	Allowed	Outliers	Percentiles	
1	A	420/543 (77%)	409 (97%)	11 (3%)	0	100	100
1	B	424/543 (78%)	412 (97%)	12 (3%)	0	100	100
All	All	844/1086 (78%)	821 (97%)	23 (3%)	0	100	100

There are no Ramachandran outliers to report.

5.3.2 Protein sidechains [i](#)

In the following table, the Percentiles column shows the percent sidechain outliers of the chain as a percentile score with respect to all X-ray entries followed by that with respect to entries of similar resolution.

The Analysed column shows the number of residues for which the sidechain conformation was analysed, and the total number of residues.

Mol	Chain	Analysed	Rotameric	Outliers	Percentiles	
1	A	319/443 (72%)	319 (100%)	0	100	100
1	B	318/443 (72%)	318 (100%)	0	100	100
All	All	637/886 (72%)	637 (100%)	0	100	100

There are no protein residues with a non-rotameric sidechain to report.

Sometimes sidechains can be flipped to improve hydrogen bonding and reduce clashes. There are no such sidechains identified.

5.3.3 RNA [i](#)

There are no RNA molecules in this entry.

5.4 Non-standard residues in protein, DNA, RNA chains [i](#)

2 non-standard protein/DNA/RNA residues are modelled in this entry.

In the following table, the Counts columns list the number of bonds (or angles) for which Mogul statistics could be retrieved, the number of bonds (or angles) that are observed in the model and the number of bonds (or angles) that are defined in the Chemical Component Dictionary. The Link column lists molecule types, if any, to which the group is linked. The Z score for a bond length (or angle) is the number of standard deviations the observed value is removed from the expected value. A bond length (or angle) with $|Z| > 2$ is considered an outlier worth inspection. RMSZ is the root-mean-square of all Z scores of the bond lengths (or angles).

Mol	Type	Chain	Res	Link	Bond lengths			Bond angles		
					Counts	RMSZ	$\# Z > 2$	Counts	RMSZ	$\# Z > 2$
1	CSX	A	441	1	3,6,7	0.92	0	1,6,8	0.17	0
1	CSX	B	441	1	3,6,7	0.92	0	1,6,8	0.08	0

In the following table, the Chirals column lists the number of chiral outliers, the number of chiral centers analysed, the number of these observed in the model and the number defined in the Chemical Component Dictionary. Similar counts are reported in the Torsion and Rings columns. '2' means no outliers of that kind were identified.

Mol	Type	Chain	Res	Link	Chirals	Torsions	Rings
1	CSX	A	441	1	-	0/1/5/7	-
1	CSX	B	441	1	-	0/1/5/7	-

There are no bond length outliers.

There are no bond angle outliers.

There are no chirality outliers.

There are no torsion outliers.

There are no ring outliers.

No monomer is involved in short contacts.

5.5 Carbohydrates [i](#)

There are no monosaccharides in this entry.

5.6 Ligand geometry [i](#)

5 ligands are modelled in this entry.

In the following table, the Counts columns list the number of bonds (or angles) for which Mogul statistics could be retrieved, the number of bonds (or angles) that are observed in the model and the number of bonds (or angles) that are defined in the Chemical Component Dictionary. The Link column lists molecule types, if any, to which the group is linked. The Z score for a bond length (or angle) is the number of standard deviations the observed value is removed from the expected value. A bond length (or angle) with $|Z| > 2$ is considered an outlier worth inspection. RMSZ is the root-mean-square of all Z scores of the bond lengths (or angles).

Mol	Type	Chain	Res	Link	Bond lengths			Bond angles		
					Counts	RMSZ	# Z > 2	Counts	RMSZ	# Z > 2
3	QD1	A	702	-	13,13,13	2.42	10 (76%)	18,18,18	1.45	3 (16%)
2	FAD	B	701	-	53,58,58	1.52	4 (7%)	68,89,89	1.05	3 (4%)
2	FAD	A	701	-	53,58,58	1.53	4 (7%)	68,89,89	1.07	3 (4%)
3	QD1	B	702	-	13,13,13	2.39	9 (69%)	18,18,18	1.40	3 (16%)
4	EDO	A	703	-	3,3,3	0.49	0	2,2,2	0.27	0

In the following table, the Chirals column lists the number of chiral outliers, the number of chiral centers analysed, the number of these observed in the model and the number defined in the Chemical Component Dictionary. Similar counts are reported in the Torsion and Rings columns. '-' means no outliers of that kind were identified.

Mol	Type	Chain	Res	Link	Chirals	Torsions	Rings
3	QD1	A	702	-	-	-	0/2/2/2
2	FAD	B	701	-	-	2/30/50/50	0/6/6/6
2	FAD	A	701	-	-	2/30/50/50	0/6/6/6
3	QD1	B	702	-	-	-	0/2/2/2
4	EDO	A	703	-	-	0/1/1/1	-

All (27) bond length outliers are listed below:

Mol	Chain	Res	Type	Atoms	Z	Observed(Å)	Ideal(Å)
2	A	701	FAD	C9-C9A	6.18	1.49	1.39
2	B	701	FAD	C9-C9A	6.14	1.49	1.39
2	A	701	FAD	C6-C5X	5.98	1.49	1.40
2	B	701	FAD	C6-C5X	5.89	1.49	1.40
3	B	702	QD1	C04-N05	3.84	1.40	1.32
3	A	702	QD1	C04-N05	3.84	1.40	1.32
2	B	701	FAD	O5'-C5'	3.17	1.57	1.44
2	A	701	FAD	O5'-C5'	3.14	1.56	1.44
3	A	702	QD1	C07-C08	3.11	1.43	1.36
3	A	702	QD1	C11-C09	3.03	1.42	1.36
3	B	702	QD1	C11-C09	3.03	1.42	1.36
3	B	702	QD1	C07-C08	2.94	1.42	1.36
3	A	702	QD1	C09-CL10	2.87	1.80	1.74
3	A	702	QD1	C12-C06	-2.64	1.38	1.42
3	B	702	QD1	C03-C04	2.63	1.43	1.38
3	B	702	QD1	C12-C06	-2.52	1.38	1.42
3	B	702	QD1	C06-N05	2.48	1.41	1.37
3	A	702	QD1	C07-C06	2.46	1.46	1.41
3	B	702	QD1	C07-C06	2.42	1.46	1.41
3	A	702	QD1	C03-C04	2.39	1.43	1.38
3	B	702	QD1	C02-N01	2.21	1.45	1.38
3	A	702	QD1	C06-N05	2.20	1.41	1.37
3	B	702	QD1	C09-CL10	2.16	1.79	1.74
2	B	701	FAD	C1'-C2'	2.12	1.55	1.52
3	A	702	QD1	C02-N01	2.02	1.44	1.38
2	A	701	FAD	C1'-C2'	2.01	1.55	1.52
3	A	702	QD1	C08-C09	2.01	1.41	1.38

All (12) bond angle outliers are listed below:

Mol	Chain	Res	Type	Atoms	Z	Observed(°)	Ideal(°)
2	B	701	FAD	C4-N3-C2	-2.70	120.66	125.64
2	B	701	FAD	O4B-C1B-C2B	-2.66	103.03	106.93
2	A	701	FAD	O4B-C1B-C2B	-2.66	103.04	106.93

Continued on next page...

Continued from previous page...

Mol	Chain	Res	Type	Atoms	Z	Observed(°)	Ideal(°)
2	A	701	FAD	C4-N3-C2	-2.61	120.81	125.64
3	A	702	QD1	C11-C12-C02	-2.55	121.01	123.08
3	A	702	QD1	C03-C04-N05	-2.46	120.77	124.58
3	B	702	QD1	C03-C04-N05	-2.40	120.86	124.58
3	B	702	QD1	C07-C06-N05	-2.34	114.68	118.52
2	A	701	FAD	C5A-C6A-N6A	2.33	123.89	120.35
2	B	701	FAD	C5A-C6A-N6A	2.32	123.89	120.35
3	A	702	QD1	C07-C06-N05	-2.26	114.81	118.52
3	B	702	QD1	C11-C12-C02	-2.16	121.33	123.08

There are no chirality outliers.

All (4) torsion outliers are listed below:

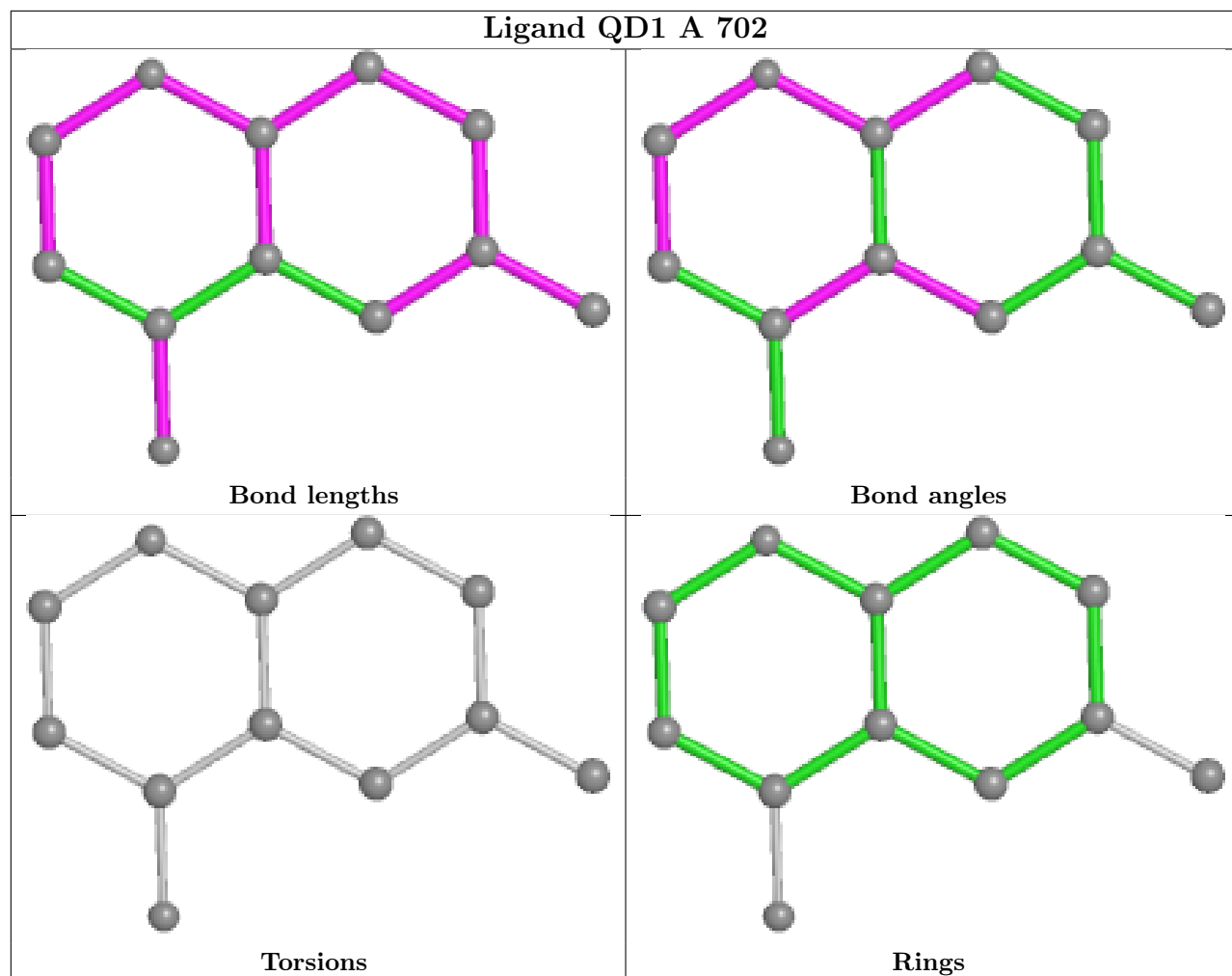
Mol	Chain	Res	Type	Atoms
2	B	701	FAD	C3B-C4B-C5B-O5B
2	B	701	FAD	O4B-C4B-C5B-O5B
2	A	701	FAD	O4B-C4B-C5B-O5B
2	A	701	FAD	C3B-C4B-C5B-O5B

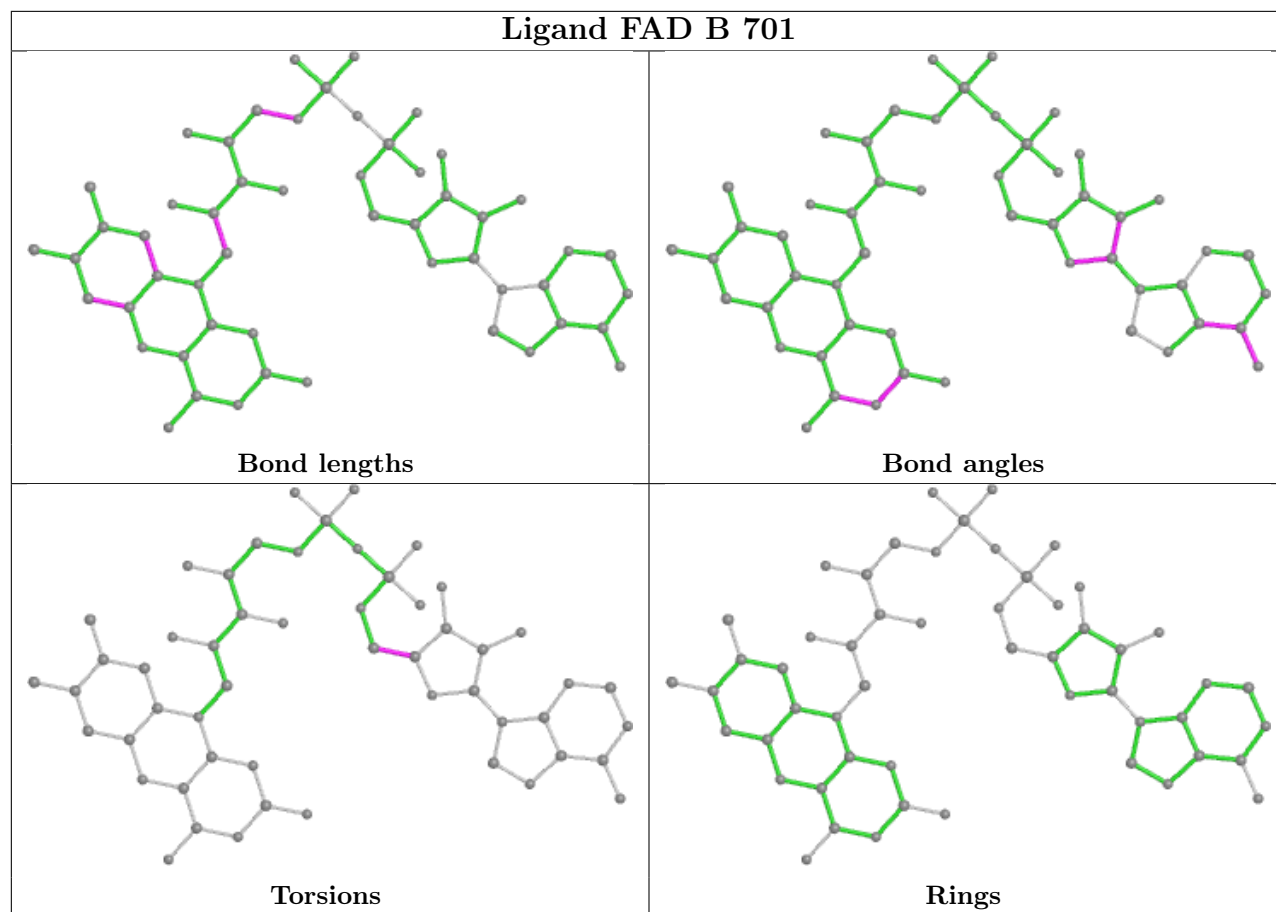
There are no ring outliers.

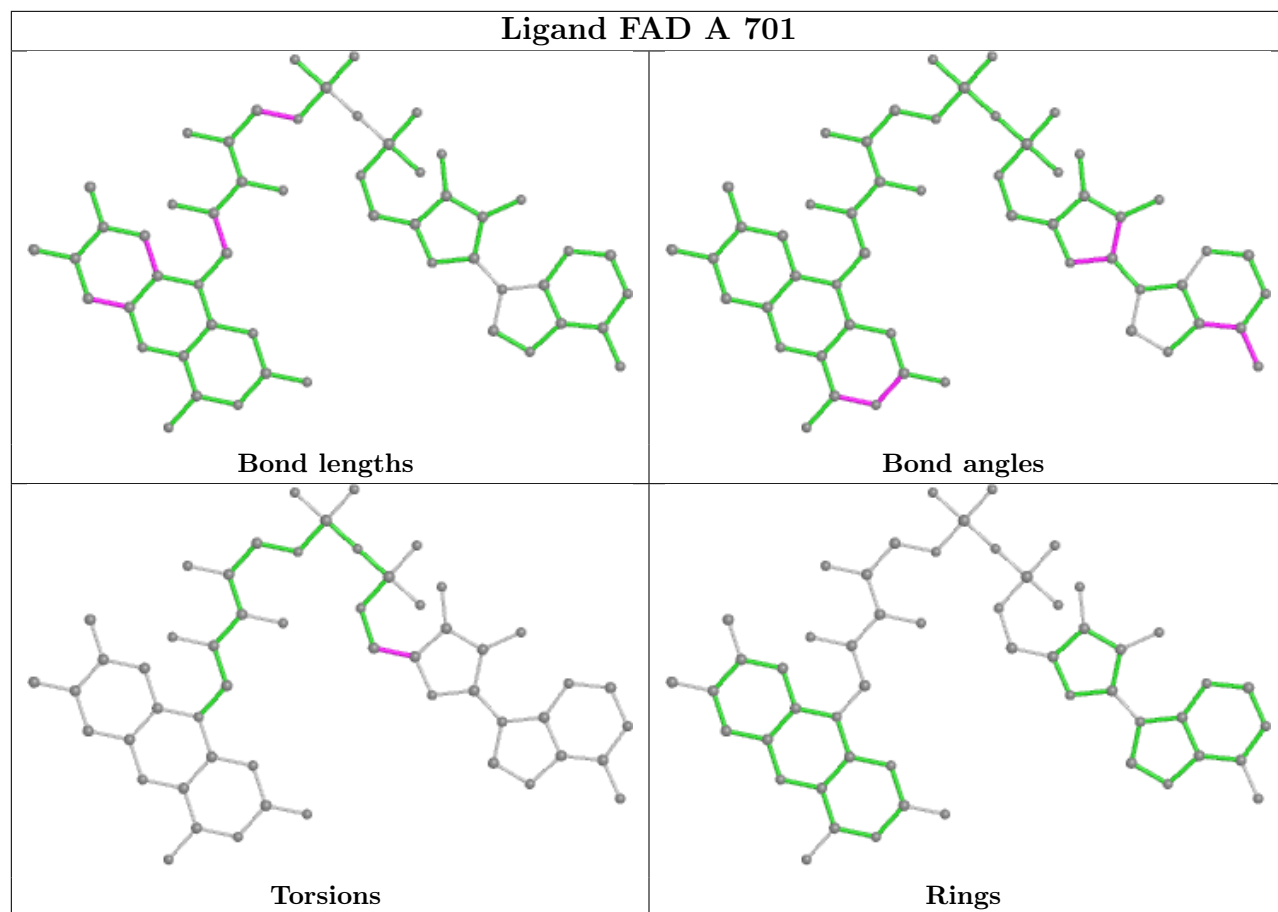
2 monomers are involved in 2 short contacts:

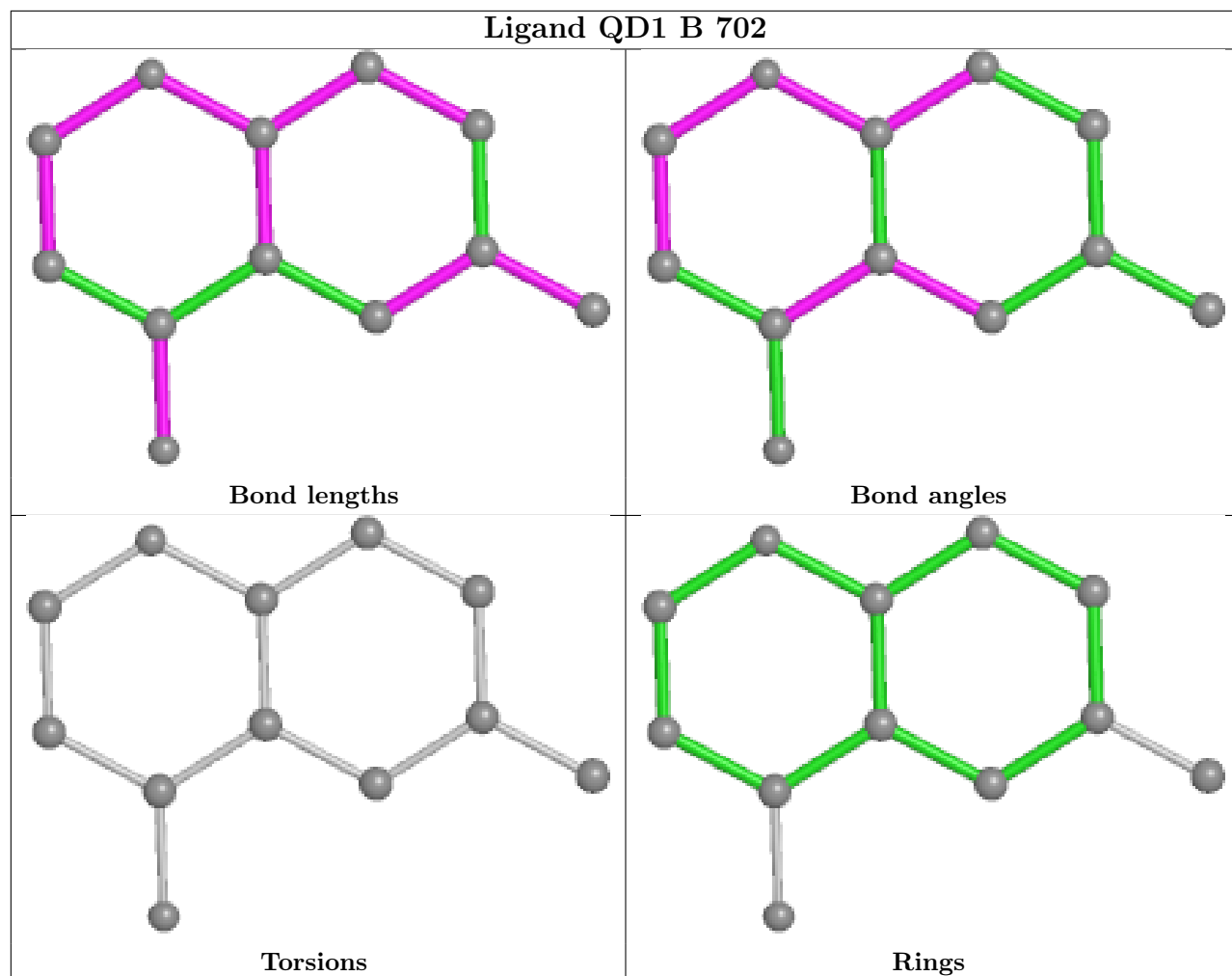
Mol	Chain	Res	Type	Clashes	Symm-Clashes
3	A	702	QD1	1	0
3	B	702	QD1	1	0

The following is a two-dimensional graphical depiction of Mogul quality analysis of bond lengths, bond angles, torsion angles, and ring geometry for all instances of the Ligand of Interest. In addition, ligands with molecular weight > 250 and outliers as shown on the validation Tables will also be included. For torsion angles, if less than 5% of the Mogul distribution of torsion angles is within 10 degrees of the torsion angle in question, then that torsion angle is considered an outlier. Any bond that is central to one or more torsion angles identified as an outlier by Mogul will be highlighted in the graph. For rings, the root-mean-square deviation (RMSD) between the ring in question and similar rings identified by Mogul is calculated over all ring torsion angles. If the average RMSD is greater than 60 degrees and the minimal RMSD between the ring in question and any Mogul-identified rings is also greater than 60 degrees, then that ring is considered an outlier. The outliers are highlighted in purple. The color gray indicates Mogul did not find sufficient equivalents in the CSD to analyse the geometry.









5.7 Other polymers [i](#)

There are no such residues in this entry.

5.8 Polymer linkage issues [i](#)

There are no chain breaks in this entry.

6 Fit of model and data

6.1 Protein, DNA and RNA chains

In the following table, the column labelled ‘#RSRZ > 2’ contains the number (and percentage) of RSRZ outliers, followed by percent RSRZ outliers for the chain as percentile scores relative to all X-ray entries and entries of similar resolution. The OWAB column contains the minimum, median, 95th percentile and maximum values of the occupancy-weighted average B-factor per residue. The column labelled ‘Q < 0.9’ lists the number of (and percentage) of residues with an average occupancy less than 0.9.

Mol	Chain	Analysed	<RSRZ>	#RSRZ>2	OWAB(Å ²)	Q<0.9
1	A	430/543 (79%)	0.13	14 (3%) 46 42	38, 56, 83, 106	0
1	B	431/543 (79%)	0.24	16 (3%) 41 37	38, 61, 92, 115	0
All	All	861/1086 (79%)	0.19	30 (3%) 44 39	38, 58, 87, 115	0

All (30) RSRZ outliers are listed below:

Mol	Chain	Res	Type	RSRZ
1	A	614	LEU	3.9
1	B	377	GLY	3.6
1	B	614	LEU	3.2
1	A	256	CYS	3.1
1	B	375	SER	3.1
1	B	374	VAL	2.9
1	B	155	PRO	2.8
1	B	256	CYS	2.7
1	A	434	TRP	2.7
1	A	618	PHE	2.6
1	A	181	PHE	2.5
1	B	139	GLY	2.4
1	A	257	LEU	2.4
1	A	615	GLU	2.4
1	B	259	ALA	2.4
1	B	138	GLY	2.3
1	A	588	ALA	2.3
1	A	486	LEU	2.3
1	A	186	ASN	2.2
1	A	435	VAL	2.2
1	B	351	TRP	2.2
1	B	618	PHE	2.1
1	A	135	LEU	2.1
1	B	433	ILE	2.1

Continued on next page...

Continued from previous page...

Mol	Chain	Res	Type	RSRZ
1	A	429	ALA	2.1
1	B	358	ARG	2.1
1	A	576	ILE	2.1
1	B	137	ILE	2.0
1	B	200	GLU	2.0
1	B	417	ASP	2.0

6.2 Non-standard residues in protein, DNA, RNA chains [i](#)

In the following table, the Atoms column lists the number of modelled atoms in the group and the number defined in the chemical component dictionary. The B-factors column lists the minimum, median, 95th percentile and maximum values of B factors of atoms in the group. The column labelled 'Q< 0.9' lists the number of atoms with occupancy less than 0.9.

Mol	Type	Chain	Res	Atoms	RSCC	RSR	B-factors(Å ²)	Q<0.9
1	CSX	A	441	7/8	0.90	0.19	37,40,48,55	0
1	CSX	B	441	7/8	0.92	0.20	38,44,53,58	0

6.3 Carbohydrates [i](#)

There are no monosaccharides in this entry.

6.4 Ligands [i](#)

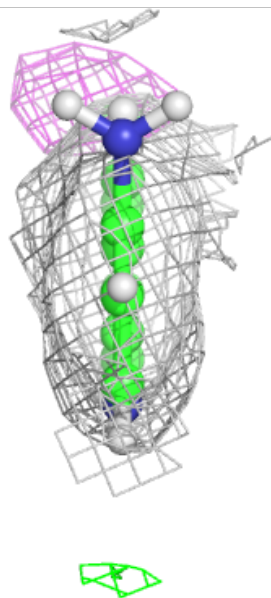
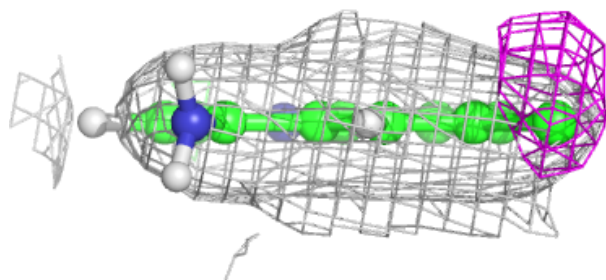
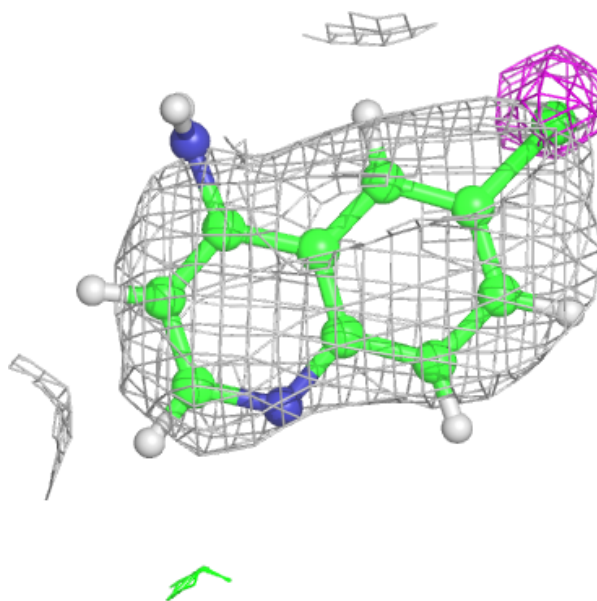
In the following table, the Atoms column lists the number of modelled atoms in the group and the number defined in the chemical component dictionary. The B-factors column lists the minimum, median, 95th percentile and maximum values of B factors of atoms in the group. The column labelled 'Q< 0.9' lists the number of atoms with occupancy less than 0.9.

Mol	Type	Chain	Res	Atoms	RSCC	RSR	B-factors(Å ²)	Q<0.9
3	QD1	B	702	12/12	0.85	0.20	56,65,84,84	0
3	QD1	A	702	12/12	0.94	0.15	45,51,64,66	0
4	EDO	A	703	4/4	0.94	0.33	44,52,62,64	0
2	FAD	B	701	53/53	0.97	0.21	41,52,64,67	0
2	FAD	A	701	53/53	0.97	0.17	37,46,56,60	0

The following is a graphical depiction of the model fit to experimental electron density of all instances of the Ligand of Interest. In addition, ligands with molecular weight > 250 and outliers as shown on the geometry validation Tables will also be included. Each fit is shown from different orientation to approximate a three-dimensional view.

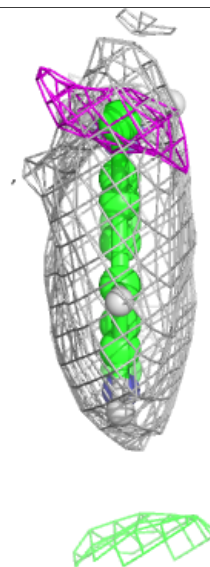
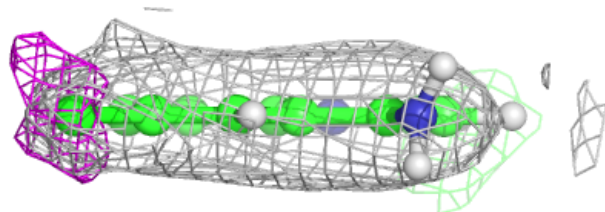
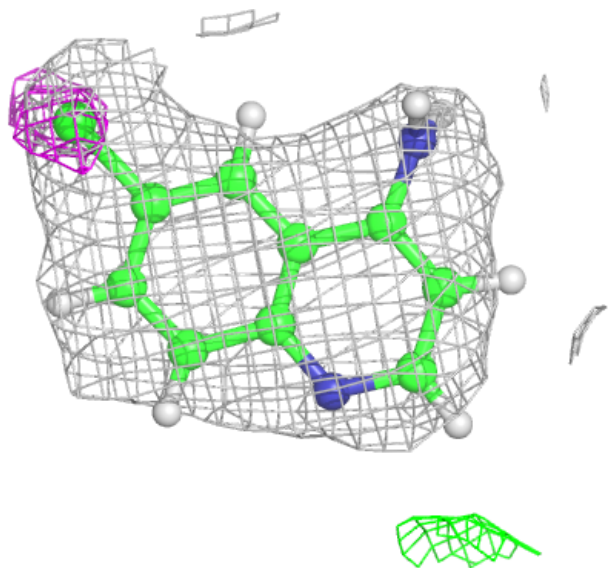
Electron density around QD1 B 702:

$2mF_o-DF_c$ (at 0.7 rmsd) in gray
 mF_o-DF_c (at 3 rmsd) in purple (negative)
and green (positive)



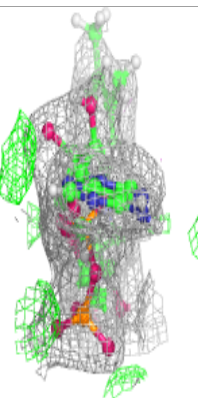
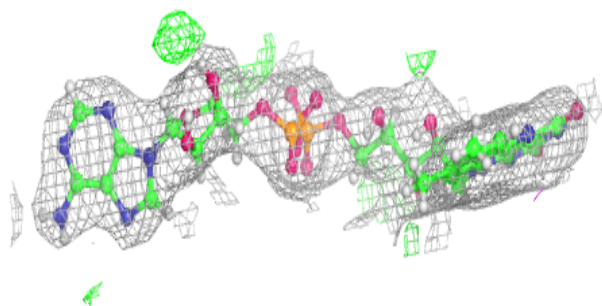
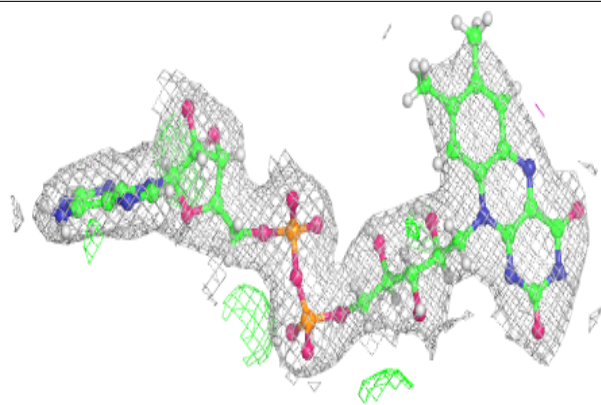
Electron density around QD1 A 702:

$2mF_o-DF_c$ (at 0.7 rmsd) in gray
 mF_o-DF_c (at 3 rmsd) in purple (negative)
and green (positive)

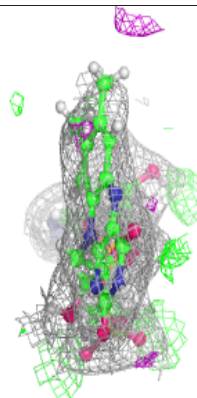
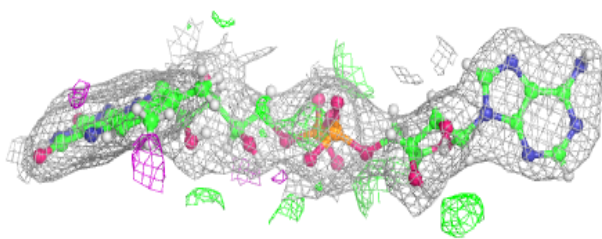
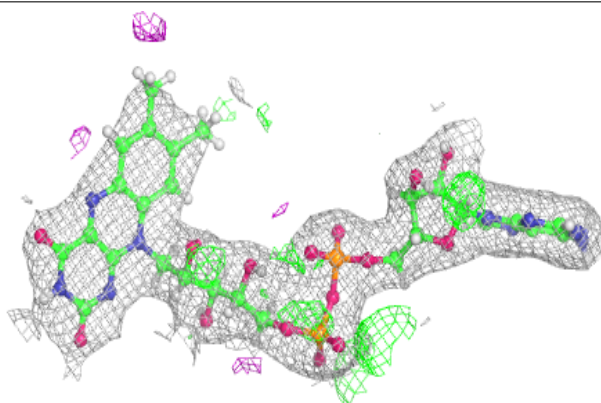


Electron density around FAD B 701:

$2mF_o-DF_c$ (at 0.7 rmsd) in gray
 mF_o-DF_c (at 3 rmsd) in purple (negative)
and green (positive)

**Electron density around FAD A 701:**

$2mF_o-DF_c$ (at 0.7 rmsd) in gray
 mF_o-DF_c (at 3 rmsd) in purple (negative)
and green (positive)



6.5 Other polymers [i](#)

There are no such residues in this entry.