



# Full wwPDB X-ray Structure Validation Report ⓘ

Dec 15, 2024 – 06:51 PM EST

PDB ID : 1D5L  
Title : CRYSTAL STRUCTURE OF CYANIDE-BOUND HUMAN MYELOPER-  
OXIDASE ISOFORM C AT PH 5.5  
Authors : Fiedler, T.J.; Davey, C.A.; Fenna, R.E.  
Deposited on : 1999-10-07  
Resolution : 1.90 Å(reported)

This is a Full wwPDB X-ray Structure Validation Report for a publicly released PDB entry.

We welcome your comments at [validation@mail.wwpdb.org](mailto:validation@mail.wwpdb.org)

A user guide is available at

<https://www.wwpdb.org/validation/2017/XrayValidationReportHelp>

with specific help available everywhere you see the ⓘ symbol.

The types of validation reports are described at

<http://www.wwpdb.org/validation/2017/FAQs#types>.

---

The following versions of software and data (see [references ⓘ](#)) were used in the production of this report:

MolProbity : 4.02b-467  
Mogul : 2022.3.0, CSD as543be (2022)  
Xtriage (Phenix) : 1.21  
EDS : 3.0  
buster-report : 1.1.7 (2018)  
Percentile statistics : 20231227.v01 (using entries in the PDB archive December 27th 2023)  
CCP4 : 9.0.004 (Gargrove)  
Density-Fitness : 1.0.11  
Ideal geometry (proteins) : Engh & Huber (2001)  
Ideal geometry (DNA, RNA) : Parkinson et al. (1996)  
Validation Pipeline (wwPDB-VP) : 2.40

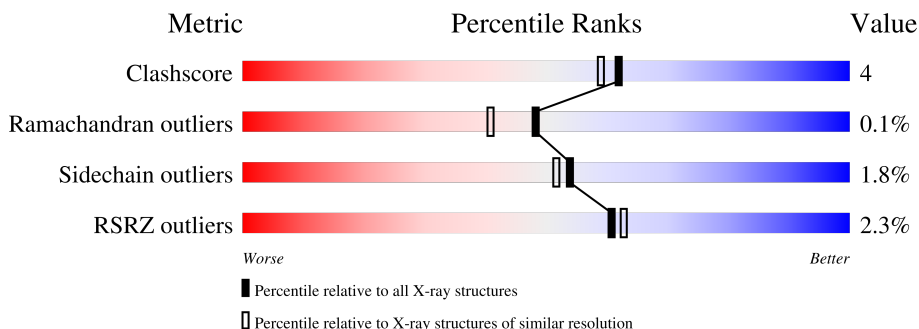
# 1 Overall quality at a glance

The following experimental techniques were used to determine the structure:

*X-RAY DIFFRACTION*

The reported resolution of this entry is 1.90 Å.

Percentile scores (ranging between 0-100) for global validation metrics of the entry are shown in the following graphic. The table shows the number of entries on which the scores are based.



Metric	Whole archive (#Entries)	Similar resolution (#Entries, resolution range(Å))
Clashscore	180529	8090 (1.90-1.90)
Ramachandran outliers	177936	8022 (1.90-1.90)
Sidechain outliers	177891	8022 (1.90-1.90)
RSRZ outliers	164620	7292 (1.90-1.90)

The table below summarises the geometric issues observed across the polymeric chains and their fit to the electron density. The red, orange, yellow and green segments of the lower bar indicate the fraction of residues that contain outliers for  $\geq 3$ , 2, 1 and 0 types of geometric quality criteria respectively. A grey segment represents the fraction of residues that are not modelled. The numeric value for each fraction is indicated below the corresponding segment, with a dot representing fractions  $\leq 5\%$ . The upper red bar (where present) indicates the fraction of residues that have poor fit to the electron density. The numeric value is given above the bar.

Mol	Chain	Length	Quality of chain
1	A	104	
1	B	104	
2	C	466	
2	D	466	
3	E	6	
3	F	6	

## 2 Entry composition i

There are 11 unique types of molecules in this entry. The entry contains 10347 atoms, of which 0 are hydrogens and 0 are deuteriums.

In the tables below, the ZeroOcc column contains the number of atoms modelled with zero occupancy, the AltConf column contains the number of residues with at least one atom in alternate conformation and the Trace column contains the number of residues modelled with at most 2 atoms.

- Molecule 1 is a protein called MYELOPEROXIDASE.

Mol	Chain	Residues	Atoms					ZeroOcc	AltConf	Trace
			Total	C	N	O	S			
1	A	104	Total 838	C 529	N 148	O 156	S 5	0	0	0
1	B	104	Total 838	C 529	N 148	O 156	S 5	0	0	0

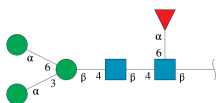
- Molecule 2 is a protein called MYELOPEROXIDASE.

Mol	Chain	Residues	Atoms					ZeroOcc	AltConf	Trace
			Total	C	N	O	S			
2	C	466	Total 3733	C 2351	N 687	O 668	S 27	0	0	0
2	D	466	Total 3733	C 2351	N 687	O 668	S 27	0	0	0

There are 2 discrepancies between the modelled and reference sequences:

Chain	Residue	Modelled	Actual	Comment	Reference
C	150	CSO	CYS	modified residue	UNP P05164
D	150	CSO	CYS	modified residue	UNP P05164

- Molecule 3 is an oligosaccharide called alpha-D-mannopyranose-(1-3)-[alpha-D-mannopyranose-(1-6)]beta-D-mannopyranose-(1-4)-2-acetamido-2-deoxy-beta-D-glucopyranose-(1-4)-[alpha-L-fucopyranose-(1-6)]2-acetamido-2-deoxy-beta-D-glucopyranose.

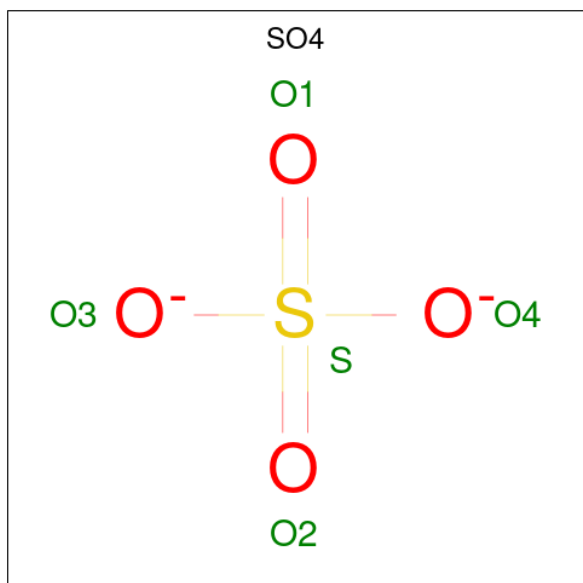


Mol	Chain	Residues	Atoms				ZeroOcc	AltConf	Trace
			Total	C	N	O			
3	E	6	Total 71	C 40	N 2	O 29	0	0	0
3	F	6	Total 71	C 40	N 2	O 29	0	0	0

- Molecule 4 is CHLORIDE ION (three-letter code: CL) (formula: Cl).

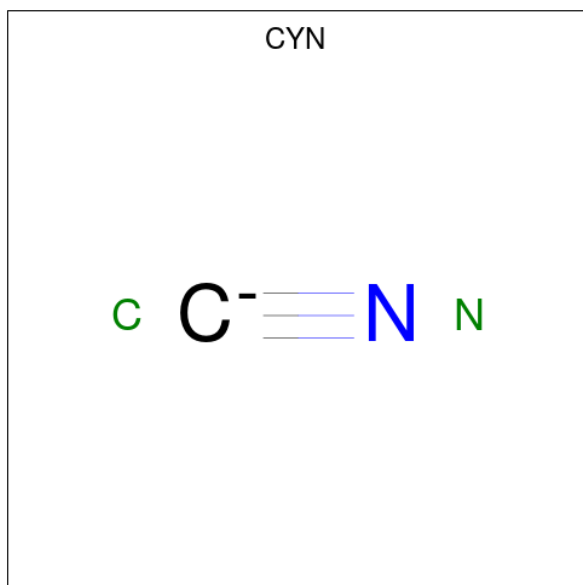
Mol	Chain	Residues	Atoms	ZeroOcc	AltConf
4	A	1	Total Cl 1 1	0	0
4	B	1	Total Cl 1 1	0	0

- Molecule 5 is SULFATE ION (three-letter code: SO4) (formula: O<sub>4</sub>S).



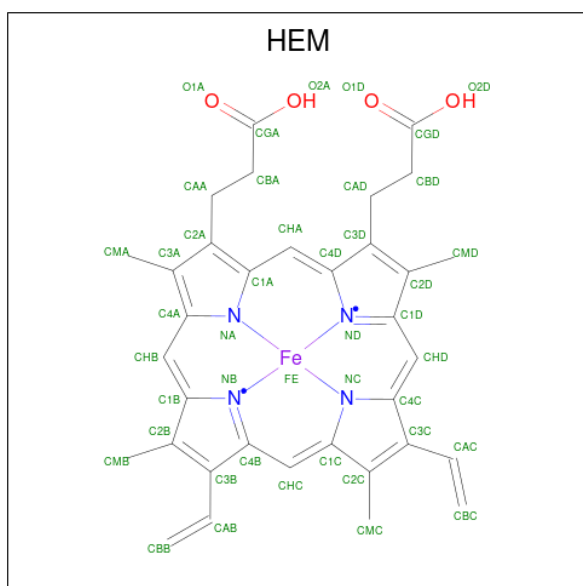
Mol	Chain	Residues	Atoms	ZeroOcc	AltConf
5	A	1	Total O S 5 4 1	0	0
5	C	1	Total O S 5 4 1	0	0
5	D	1	Total O S 5 4 1	0	0

- Molecule 6 is CYANIDE ION (three-letter code: CYN) (formula: CN).



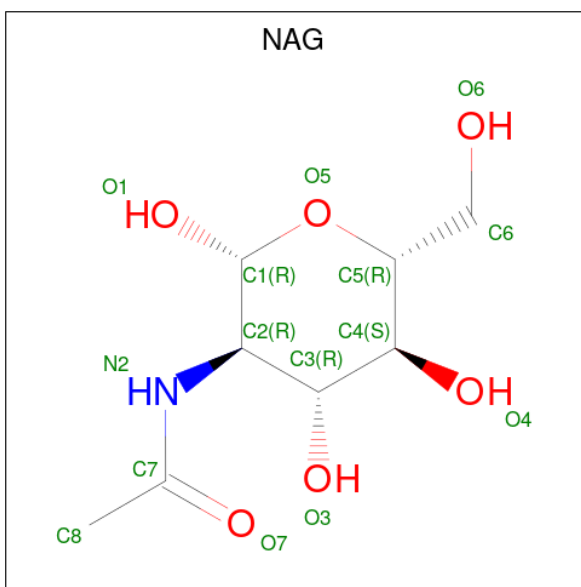
Mol	Chain	Residues	Atoms	ZeroOcc	AltConf
6	A	1	Total C N 2 1 1	0	0
6	C	1	Total C N 2 1 1	0	0
6	B	1	Total C N 2 1 1	0	0
6	D	1	Total C N 2 1 1	0	0

- Molecule 7 is PROTOPORPHYRIN IX CONTAINING FE (three-letter code: HEM) (formula:  $C_{34}H_{32}FeN_4O_4$ ).



Mol	Chain	Residues	Atoms				ZeroOcc	AltConf	
7	C	1	Total	C	Fe	N	O	0	0
			43	34	1	4	4		
7	D	1	Total	C	Fe	N	O	0	0
			43	34	1	4	4		

- Molecule 8 is 2-acetamido-2-deoxy-beta-D-glucopyranose (three-letter code: NAG) (formula:  $C_8H_{15}NO_6$ ).



Mol	Chain	Residues	Atoms				ZeroOcc	AltConf
8	C	1	Total	C	N	O	0	0
			14	8	1	5		
8	C	1	Total	C	N	O	0	0
			14	8	1	5		
8	D	1	Total	C	N	O	0	0
			14	8	1	5		
8	D	1	Total	C	N	O	0	0
			14	8	1	5		

- Molecule 9 is CALCIUM ION (three-letter code: CA) (formula: Ca).

Mol	Chain	Residues	Atoms		ZeroOcc	AltConf
9	C	1	Total	Ca	0	0
			1	1		
9	D	1	Total	Ca	0	0
			1	1		

- Molecule 10 is ACETATE ION (three-letter code: ACT) (formula:  $C_2H_3O_2$ ).



Mol	Chain	Residues	Atoms	ZeroOcc	AltConf
10	C	1	Total C O 4 2 2	0	0
10	C	1	Total C O 4 2 2	0	0
10	C	1	Total C O 4 2 2	0	0
10	C	1	Total C O 4 2 2	0	0
10	D	1	Total C O 4 2 2	0	0
10	D	1	Total C O 4 2 2	0	0
10	D	1	Total C O 4 2 2	0	0

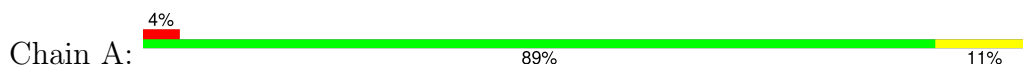
- Molecule 11 is water.

Mol	Chain	Residues	Atoms	ZeroOcc	AltConf
11	A	94	Total O 94 94	0	0
11	C	340	Total O 340 340	0	0
11	B	106	Total O 106 106	0	0
11	D	326	Total O 326 326	0	0

### 3 Residue-property plots [i](#)

These plots are drawn for all protein, RNA, DNA and oligosaccharide chains in the entry. The first graphic for a chain summarises the proportions of the various outlier classes displayed in the second graphic. The second graphic shows the sequence view annotated by issues in geometry and electron density. Residues are color-coded according to the number of geometric quality criteria for which they contain at least one outlier: green = 0, yellow = 1, orange = 2 and red = 3 or more. A red dot above a residue indicates a poor fit to the electron density ( $RSRZ > 2$ ). Stretches of 2 or more consecutive residues without any outlier are shown as a green connector. Residues present in the sample, but not in the model, are shown in grey.

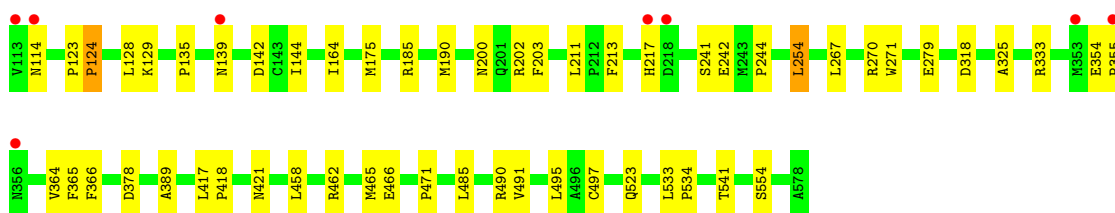
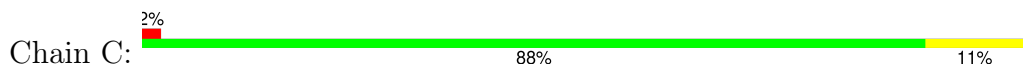
- Molecule 1: MYELOPEROXIDASE



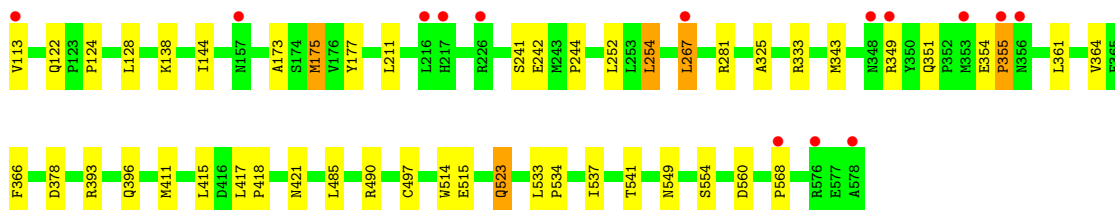
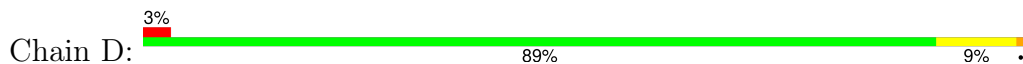
- Molecule 1: MYELOPEROXIDASE



- Molecule 2: MYELOPEROXIDASE



- Molecule 2: MYELOPEROXIDASE



- Molecule 3: alpha-D-mannopyranose-(1-3)-[alpha-D-mannopyranose-(1-6)]beta-D-mannopyranose-(1-4)-2-acetamido-2-deoxy-beta-D-glucopyranose-(1-4)-[alpha-L-fucopyranose-(1-6)]2-acetamido-2-deoxy-beta-D-glucopyranose



Chain E:

100%


MAG1  
MAG2  
BMA3  
MAN4  
MAN5  
FUC6

- Molecule 3: alpha-D-mannopyranose-(1-3)-[alpha-D-mannopyranose-(1-6)]beta-D-mannopyranose-(1-4)-2-acetamido-2-deoxy-beta-D-glucopyranose-(1-4)-[alpha-L-fucopyranose-(1-6)]2-acetamido-2-deoxy-beta-D-glucopyranose

Chain F:

100%


MAG1  
MAG2  
BMA3  
MAN4  
MAN5  
FUC6

## 4 Data and refinement statistics

Property	Value	Source
Space group	P 1 21 1	Depositor
Cell constants a, b, c, $\alpha$ , $\beta$ , $\gamma$	111.22Å 63.51Å 92.34Å 90.00° 97.43° 90.00°	Depositor
Resolution (Å)	30.00 – 1.90 30.00 – 1.91	Depositor EDS
% Data completeness (in resolution range)	91.3 (30.00-1.90) 96.0 (30.00-1.91)	Depositor EDS
$R_{merge}$	0.06	Depositor
$R_{sym}$	(Not available)	Depositor
$\langle I/\sigma(I) \rangle$ <sup>1</sup>	5.42 (at 1.91Å)	Xtrriage
Refinement program	X-PLOR 3.851	Depositor
R, $R_{free}$	0.172 , 0.215 0.171 , (Not available)	Depositor DCC
$R_{free}$ test set	No test flags present.	wwPDB-VP
Wilson B-factor (Å <sup>2</sup> )	13.2	Xtrriage
Anisotropy	0.393	Xtrriage
Bulk solvent $k_{sol}$ (e/Å <sup>3</sup> ), $B_{sol}$ (Å <sup>2</sup> )	0.41 , 53.0	EDS
L-test for twinning <sup>2</sup>	$\langle  L  \rangle = 0.49$ , $\langle L^2 \rangle = 0.32$	Xtrriage
Estimated twinning fraction	No twinning to report.	Xtrriage
$F_o, F_c$ correlation	0.94	EDS
Total number of atoms	10347	wwPDB-VP
Average B, all atoms (Å <sup>2</sup> )	13.0	wwPDB-VP

Xtrriage's analysis on translational NCS is as follows: *The largest off-origin peak in the Patterson function is 3.79% of the height of the origin peak. No significant pseudotranslation is detected.*

<sup>1</sup>Intensities estimated from amplitudes.

<sup>2</sup>Theoretical values of  $\langle |L| \rangle$ ,  $\langle L^2 \rangle$  for acentric reflections are 0.5, 0.333 respectively for untwinned datasets, and 0.375, 0.2 for perfectly twinned datasets.

## 5 Model quality [i](#)

### 5.1 Standard geometry [i](#)

Bond lengths and bond angles in the following residue types are not validated in this section: CL, NAG, MAN, FUC, CA, CYN, BMA, CSO, ACT, SO4, HEM

The Z score for a bond length (or angle) is the number of standard deviations the observed value is removed from the expected value. A bond length (or angle) with  $|Z| > 5$  is considered an outlier worth inspection. RMSZ is the root-mean-square of all Z scores of the bond lengths (or angles).

Mol	Chain	Bond lengths		Bond angles	
		RMSZ	# Z  >5	RMSZ	# Z  >5
1	A	0.58	0/863	0.67	0/1174
1	B	0.57	0/863	0.66	0/1174
2	C	0.54	0/3811	0.59	0/5168
2	D	0.52	0/3811	0.57	0/5168
All	All	0.54	0/9348	0.60	0/12684

There are no bond length outliers.

There are no bond angle outliers.

There are no chirality outliers.

There are no planarity outliers.

### 5.2 Too-close contacts [i](#)

In the following table, the Non-H and H(model) columns list the number of non-hydrogen atoms and hydrogen atoms in the chain respectively. The H(added) column lists the number of hydrogen atoms added and optimized by MolProbity. The Clashes column lists the number of clashes within the asymmetric unit, whereas Symm-Clashes lists symmetry-related clashes.

Mol	Chain	Non-H	H(model)	H(added)	Clashes	Symm-Clashes
1	A	838	0	798	8	0
1	B	838	0	798	3	0
2	C	3733	0	3725	35	0
2	D	3733	0	3725	31	0
3	E	71	0	61	0	0
3	F	71	0	61	0	0
4	A	1	0	0	0	0
4	B	1	0	0	0	0
5	A	5	0	0	0	0

*Continued on next page...*

Continued from previous page...

Mol	Chain	Non-H	H(model)	H(added)	Clashes	Symm-Clashes
5	C	5	0	0	0	0
5	D	5	0	0	0	0
6	A	2	0	0	0	0
6	B	2	0	0	0	0
6	C	2	0	0	1	0
6	D	2	0	0	0	0
7	C	43	0	30	3	0
7	D	43	0	30	3	0
8	C	28	0	26	0	0
8	D	28	0	26	0	0
9	C	1	0	0	0	0
9	D	1	0	0	0	0
10	C	16	0	12	0	0
10	D	12	0	9	1	0
11	A	94	0	0	2	0
11	B	106	0	0	0	0
11	C	340	0	0	3	0
11	D	326	0	0	3	0
All	All	10347	0	9301	75	0

The all-atom clashscore is defined as the number of clashes found per 1000 atoms (including hydrogen atoms). The all-atom clashscore for this structure is 4.

All (75) close contacts within the same asymmetric unit are listed below, sorted by their clash magnitude.

Atom-1	Atom-2	Interatomic distance (Å)	Clash overlap (Å)
2:D:411:MET:HE2	2:D:415:LEU:HD21	1.76	0.68
2:D:113:VAL:HG21	2:D:122:GLN:HB2	1.81	0.62
2:C:465:MET:HE1	2:C:471:PRO:HG3	1.81	0.62
11:A:1704:HOH:O	2:C:129:LYS:HD3	1.99	0.61
2:C:333:ARG:HH11	2:C:421:ASN:HD22	1.48	0.60
2:D:568:PRO:HG2	11:D:911:HOH:O	2.00	0.59
7:D:601:HEM:HMC2	7:D:601:HEM:HBC2	1.83	0.59
2:C:333:ARG:HH11	2:C:421:ASN:ND2	1.99	0.59
2:D:411:MET:CE	2:D:415:LEU:HD21	2.34	0.57
2:C:271:TRP:CZ3	2:C:279:GLU:HG3	2.41	0.56
2:C:135:PRO:HG2	11:C:703:HOH:O	2.06	0.55
1:A:4:GLN:HG2	1:A:5:ASP:N	2.20	0.55
7:C:601:HEM:HBC2	7:C:601:HEM:HMC2	1.89	0.55
2:D:241:SER:O	2:D:366:PHE:HA	2.07	0.54
2:D:349:ARG:HG3	2:D:351:GLN:HG2	1.89	0.54

Continued on next page...

*Continued from previous page...*

Atom-1	Atom-2	Interatomic distance (Å)	Clash overlap (Å)
2:C:213:PHE:H	6:C:610:CYN:C	2.20	0.54
2:D:333:ARG:HH11	2:D:421:ASN:ND2	2.04	0.54
2:D:242:GLU:OE1	7:D:601:HEM:HBB2	2.08	0.54
2:D:417:LEU:HB3	2:D:418:PRO:HD3	1.91	0.53
2:C:242:GLU:OE1	7:C:601:HEM:HBB2	2.09	0.52
2:C:270:ARG:NH1	11:C:704:HOH:O	2.43	0.52
2:C:491:VAL:HB	2:C:495:LEU:HB2	1.92	0.52
2:C:200:ASN:ND2	2:C:202:ARG:H	2.08	0.51
2:C:128:LEU:HB2	2:C:144:ILE:HB	1.93	0.51
2:C:200:ASN:HD22	2:C:203:PHE:H	1.57	0.51
2:D:554:SER:HB3	2:D:560:ASP:HB3	1.93	0.51
1:A:70:ARG:HD2	11:A:1719:HOH:O	2.10	0.50
10:D:606:ACT:H1	11:D:991:HOH:O	2.11	0.50
2:D:244:PRO:HB2	2:D:343:MET:SD	2.52	0.50
2:D:534:PRO:HG2	2:D:549:ASN:ND2	2.26	0.50
2:C:465:MET:HE1	2:C:471:PRO:CG	2.41	0.49
1:A:83:SER:HB3	2:C:554:SER:O	2.12	0.49
2:C:211:LEU:HD23	2:C:254:LEU:HD13	1.93	0.49
2:D:378:ASP:OD1	2:D:541:THR:HB	2.13	0.48
2:C:417:LEU:HB3	2:C:418:PRO:HD3	1.95	0.48
2:C:200:ASN:HD22	2:C:202:ARG:H	1.59	0.48
2:D:333:ARG:HH11	2:D:421:ASN:HD22	1.61	0.48
1:B:83:SER:HB3	2:D:554:SER:O	2.13	0.47
2:C:354:GLU:HB3	2:C:355:PRO:HA	1.96	0.47
2:D:349:ARG:HE	2:D:351:GLN:HG3	1.80	0.47
2:C:242:GLU:O	2:C:365:PHE:HA	2.15	0.46
1:A:32:TRP:CE2	2:C:325:ALA:HB2	2.52	0.45
1:A:101:PRO:HD2	2:C:164:ILE:O	2.17	0.45
2:C:142:ASP:HB3	11:C:945:HOH:O	2.17	0.45
1:B:32:TRP:CE2	2:D:325:ALA:HB2	2.52	0.44
2:C:462:ARG:O	2:C:466:GLU:HG2	2.18	0.44
1:A:84:LEU:HD13	2:C:389:ALA:HA	2.00	0.44
2:C:458:LEU:O	2:C:462:ARG:HG3	2.18	0.44
2:D:533:LEU:HB3	2:D:534:PRO:HD3	2.00	0.44
2:C:485:LEU:HD13	2:C:490:ARG:HA	2.00	0.43
2:D:173:ALA:HA	2:D:175:MET:SD	2.58	0.43
2:D:523:GLN:CD	2:D:523:GLN:H	2.22	0.43
2:C:123:PRO:HA	2:C:124:PRO:HA	1.78	0.43
2:C:533:LEU:N	2:C:534:PRO:CD	2.81	0.43
2:D:354:GLU:HB3	2:D:355:PRO:HA	2.00	0.42
2:C:139:ASN:HB2	2:C:142:ASP:OD1	2.18	0.42

*Continued on next page...*

Continued from previous page...

Atom-1	Atom-2	Interatomic distance (Å)	Clash overlap (Å)
2:C:378:ASP:OD1	2:C:541:THR:HB	2.19	0.42
7:C:601:HEM:HBC2	7:C:601:HEM:CMC	2.49	0.42
2:C:185:ARG:HG3	2:C:190:MET:CE	2.50	0.42
2:D:211:LEU:HD23	2:D:254:LEU:HD13	2.01	0.42
7:D:601:HEM:HBC2	7:D:601:HEM:CMC	2.50	0.42
1:A:40:GLY:HA2	1:B:20:PRO:HD2	2.02	0.41
2:D:514:TRP:CE2	2:D:515:GLU:HG3	2.55	0.41
2:D:177:TYR:OH	2:D:281:ARG:HA	2.20	0.41
2:C:244:PRO:HD3	2:C:364:VAL:O	2.21	0.41
2:D:485:LEU:HD13	2:D:490:ARG:HA	2.03	0.41
2:D:549:ASN:ND2	11:D:706:HOH:O	2.53	0.41
2:C:241:SER:O	2:C:366:PHE:HA	2.21	0.41
2:D:393:ARG:HB2	2:D:396:GLN:HB2	2.03	0.41
1:A:6:LYS:HE3	1:A:7:TYR:CZ	2.57	0.40
2:C:129:LYS:HB3	2:C:129:LYS:HE2	1.78	0.40
2:D:128:LEU:HB2	2:D:144:ILE:HB	2.03	0.40
2:D:252:LEU:HD11	2:D:537:ILE:HA	2.03	0.40
2:D:267:LEU:HA	2:D:267:LEU:HD22	1.84	0.40
2:D:361:LEU:O	2:D:364:VAL:HG22	2.22	0.40

There are no symmetry-related clashes.

## 5.3 Torsion angles [i](#)

### 5.3.1 Protein backbone [i](#)

In the following table, the Percentiles column shows the percent Ramachandran outliers of the chain as a percentile score with respect to all X-ray entries followed by that with respect to entries of similar resolution.

The Analysed column shows the number of residues for which the backbone conformation was analysed, and the total number of residues.

Mol	Chain	Analysed	Favoured	Allowed	Outliers	Percentiles	
1	A	102/104 (98%)	100 (98%)	2 (2%)	0	100	100
1	B	102/104 (98%)	99 (97%)	3 (3%)	0	100	100
2	C	463/466 (99%)	453 (98%)	9 (2%)	1 (0%)	44	36
2	D	463/466 (99%)	453 (98%)	10 (2%)	0	100	100
All	All	1130/1140 (99%)	1105 (98%)	24 (2%)	1 (0%)	48	41

All (1) Ramachandran outliers are listed below:

Mol	Chain	Res	Type
2	C	114	ASN

### 5.3.2 Protein sidechains [i](#)

In the following table, the Percentiles column shows the percent sidechain outliers of the chain as a percentile score with respect to all X-ray entries followed by that with respect to entries of similar resolution.

The Analysed column shows the number of residues for which the sidechain conformation was analysed, and the total number of residues.

Mol	Chain	Analysed	Rotameric	Outliers	Percentiles	
1	A	90/90 (100%)	89 (99%)	1 (1%)	70	71
1	B	90/90 (100%)	89 (99%)	1 (1%)	70	71
2	C	410/410 (100%)	402 (98%)	8 (2%)	50	47
2	D	410/410 (100%)	402 (98%)	8 (2%)	50	47
All	All	1000/1000 (100%)	982 (98%)	18 (2%)	54	52

All (18) residues with a non-rotameric sidechain are listed below:

Mol	Chain	Res	Type
1	A	54	ASN
2	C	124	PRO
2	C	175	MET
2	C	217	HIS
2	C	254	LEU
2	C	267	LEU
2	C	318	ASP
2	C	497	CYS
2	C	523	GLN
1	B	54	ASN
2	D	124	PRO
2	D	138	LYS
2	D	175	MET
2	D	254	LEU
2	D	267	LEU
2	D	355	PRO
2	D	497	CYS
2	D	523	GLN

Sometimes sidechains can be flipped to improve hydrogen bonding and reduce clashes. All (9) such sidechains are listed below:

Mol	Chain	Res	Type
1	A	54	ASN
2	C	122	GLN
2	C	200	ASN
2	C	421	ASN
2	C	526	GLN
1	B	54	ASN
2	D	133	ASN
2	D	421	ASN
2	D	549	ASN

### 5.3.3 RNA [i](#)

There are no RNA molecules in this entry.

## 5.4 Non-standard residues in protein, DNA, RNA chains [i](#)

2 non-standard protein/DNA/RNA residues are modelled in this entry.

In the following table, the Counts columns list the number of bonds (or angles) for which Mogul statistics could be retrieved, the number of bonds (or angles) that are observed in the model and the number of bonds (or angles) that are defined in the Chemical Component Dictionary. The Link column lists molecule types, if any, to which the group is linked. The Z score for a bond length (or angle) is the number of standard deviations the observed value is removed from the expected value. A bond length (or angle) with  $|Z| > 2$  is considered an outlier worth inspection. RMSZ is the root-mean-square of all Z scores of the bond lengths (or angles).

Mol	Type	Chain	Res	Link	Bond lengths			Bond angles		
					Counts	RMSZ	# Z  > 2	Counts	RMSZ	# Z  > 2
2	CSO	C	150	2	3,6,7	0.80	0	1,6,8	1.10	0
2	CSO	D	150	2	3,6,7	0.99	0	1,6,8	1.09	0

In the following table, the Chirals column lists the number of chiral outliers, the number of chiral centers analysed, the number of these observed in the model and the number defined in the Chemical Component Dictionary. Similar counts are reported in the Torsion and Rings columns. '-' means no outliers of that kind were identified.

Mol	Type	Chain	Res	Link	Chirals	Torsions	Rings
2	CSO	C	150	2	-	0/1/5/7	-
2	CSO	D	150	2	-	0/1/5/7	-



There are no bond length outliers.

There are no bond angle outliers.

There are no chirality outliers.

There are no torsion outliers.

There are no ring outliers.

No monomer is involved in short contacts.

## 5.5 Carbohydrates i

12 monosaccharides are modelled in this entry.

In the following table, the Counts columns list the number of bonds (or angles) for which Mogul statistics could be retrieved, the number of bonds (or angles) that are observed in the model and the number of bonds (or angles) that are defined in the Chemical Component Dictionary. The Link column lists molecule types, if any, to which the group is linked. The Z score for a bond length (or angle) is the number of standard deviations the observed value is removed from the expected value. A bond length (or angle) with  $|Z| > 2$  is considered an outlier worth inspection. RMSZ is the root-mean-square of all Z scores of the bond lengths (or angles).

Mol	Type	Chain	Res	Link	Bond lengths			Bond angles		
					Counts	RMSZ	# Z  > 2	Counts	RMSZ	# Z  > 2
3	NAG	E	1	3,2	14,14,15	0.70	0	17,19,21	0.86	0
3	NAG	E	2	3	14,14,15	0.53	0	17,19,21	0.74	0
3	BMA	E	3	3	11,11,12	0.48	0	15,15,17	0.46	0
3	MAN	E	4	3	11,11,12	0.64	0	15,15,17	0.50	0
3	MAN	E	5	3	11,11,12	0.50	0	15,15,17	0.51	0
3	FUC	E	6	3	10,10,11	0.46	0	14,14,16	0.57	0
3	NAG	F	1	3,2	14,14,15	0.51	0	17,19,21	0.97	0
3	NAG	F	2	3	14,14,15	0.44	0	17,19,21	0.76	0
3	BMA	F	3	3	11,11,12	0.34	0	15,15,17	0.60	0
3	MAN	F	4	3	11,11,12	0.67	0	15,15,17	0.61	0
3	MAN	F	5	3	11,11,12	0.53	0	15,15,17	0.49	0
3	FUC	F	6	3	10,10,11	0.61	0	14,14,16	0.43	0

In the following table, the Chirals column lists the number of chiral outliers, the number of chiral centers analysed, the number of these observed in the model and the number defined in the Chemical Component Dictionary. Similar counts are reported in the Torsion and Rings columns. '-' means no outliers of that kind were identified.

Mol	Type	Chain	Res	Link	Chirals	Torsions	Rings
3	NAG	E	1	3,2	-	0/6/23/26	0/1/1/1
3	NAG	E	2	3	-	0/6/23/26	0/1/1/1

*Continued on next page...*

*Continued from previous page...*

Mol	Type	Chain	Res	Link	Chirals	Torsions	Rings
3	BMA	E	3	3	-	0/2/19/22	0/1/1/1
3	MAN	E	4	3	-	0/2/19/22	0/1/1/1
3	MAN	E	5	3	-	0/2/19/22	0/1/1/1
3	FUC	E	6	3	-	-	0/1/1/1
3	NAG	F	1	3,2	-	0/6/23/26	0/1/1/1
3	NAG	F	2	3	-	0/6/23/26	0/1/1/1
3	BMA	F	3	3	-	0/2/19/22	0/1/1/1
3	MAN	F	4	3	-	0/2/19/22	0/1/1/1
3	MAN	F	5	3	-	0/2/19/22	0/1/1/1
3	FUC	F	6	3	-	-	0/1/1/1

There are no bond length outliers.

There are no bond angle outliers.

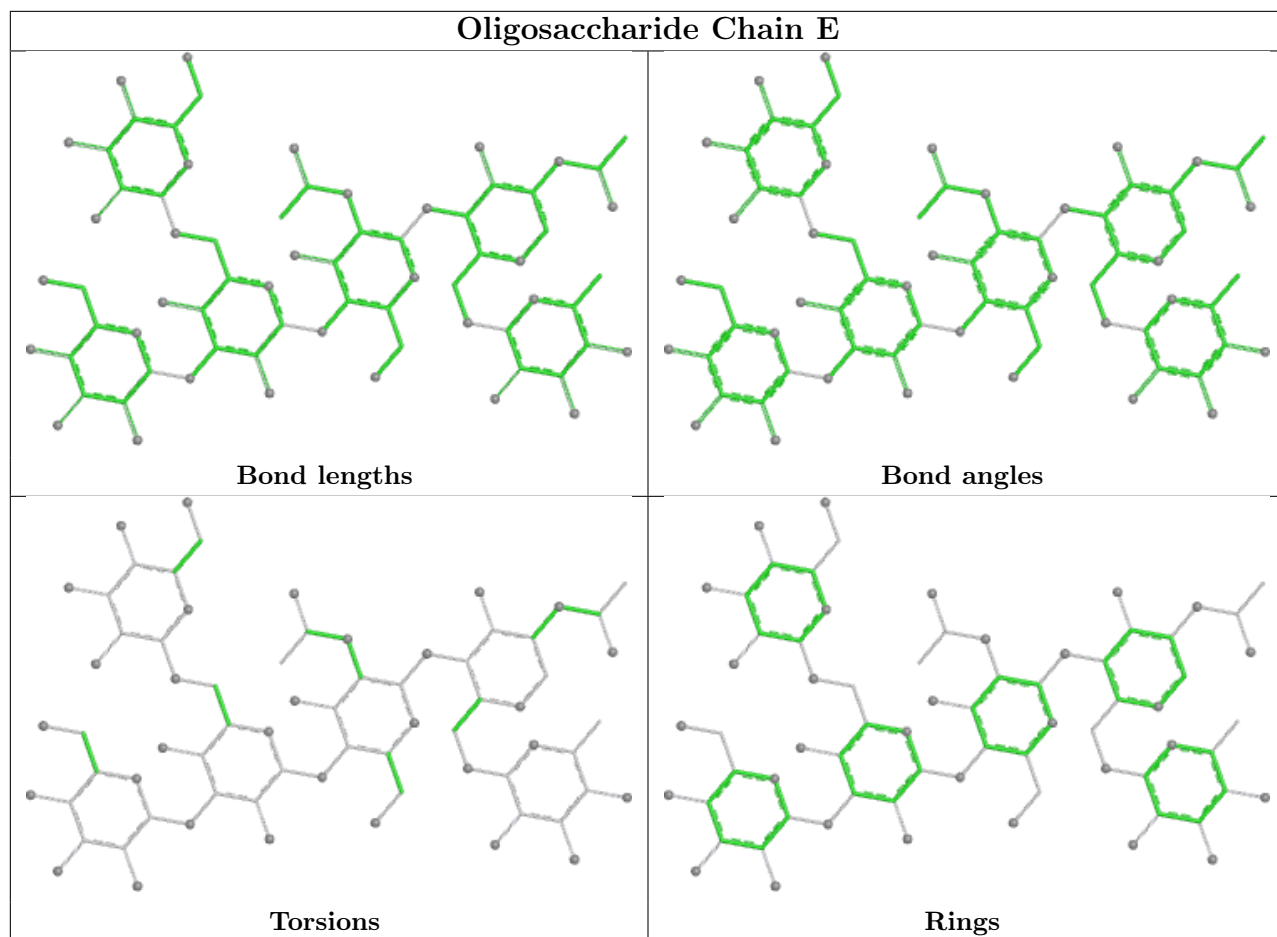
There are no chirality outliers.

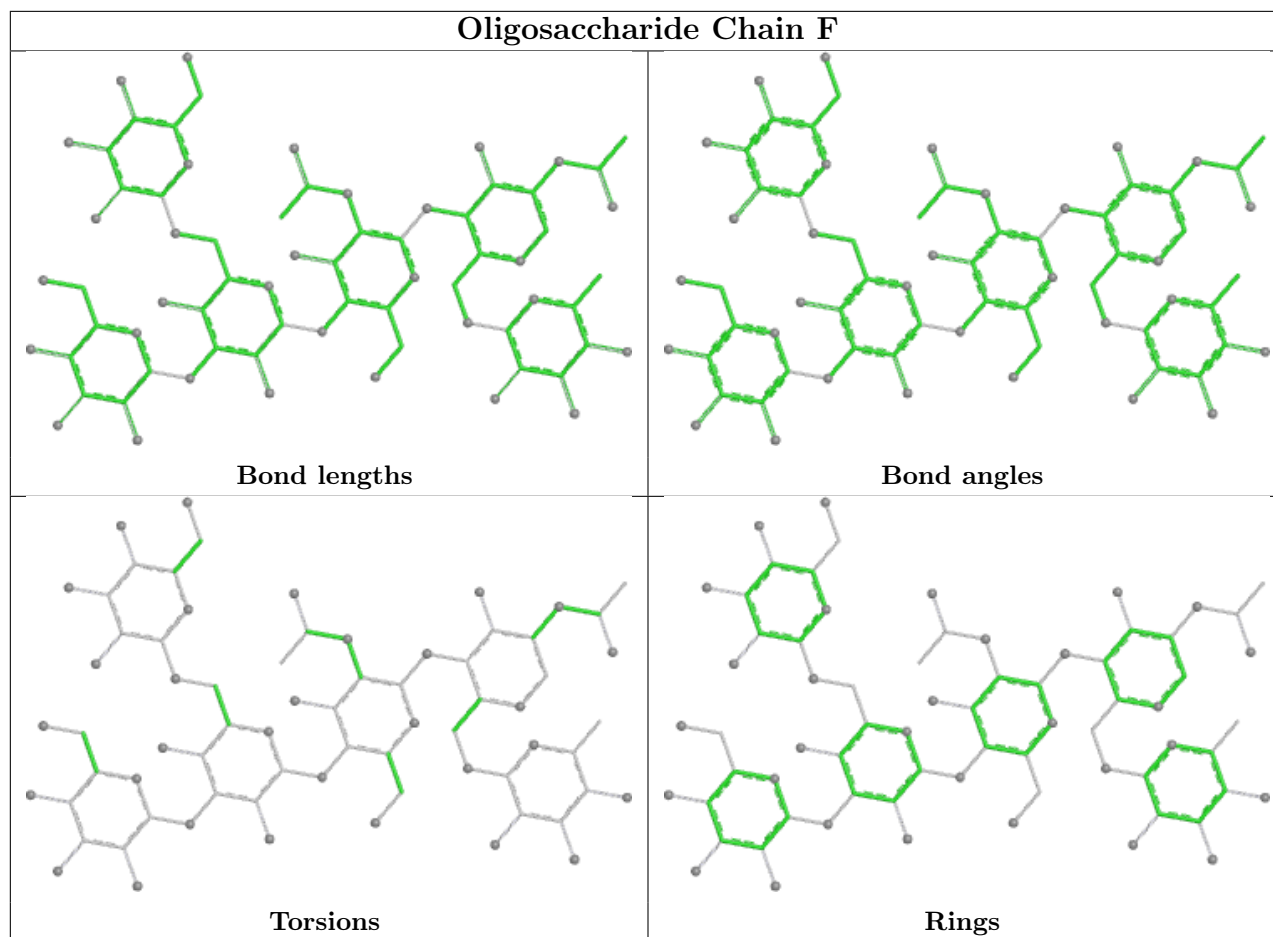
There are no torsion outliers.

There are no ring outliers.

No monomer is involved in short contacts.

The following is a two-dimensional graphical depiction of Mogul quality analysis of bond lengths, bond angles, torsion angles, and ring geometry for oligosaccharide.





## 5.6 Ligand geometry [i](#)

Of 24 ligands modelled in this entry, 4 are monoatomic - leaving 20 for Mogul analysis.

In the following table, the Counts columns list the number of bonds (or angles) for which Mogul statistics could be retrieved, the number of bonds (or angles) that are observed in the model and the number of bonds (or angles) that are defined in the Chemical Component Dictionary. The Link column lists molecule types, if any, to which the group is linked. The Z score for a bond length (or angle) is the number of standard deviations the observed value is removed from the expected value. A bond length (or angle) with  $|Z| > 2$  is considered an outlier worth inspection. RMSZ is the root-mean-square of all Z scores of the bond lengths (or angles).

Mol	Type	Chain	Res	Link	Bond lengths			Bond angles		
					Counts	RMSZ	# $ Z  > 2$	Counts	RMSZ	# $ Z  > 2$
8	NAG	D	602	2	14,14,15	0.52	0	17,19,21	0.82	1 (5%)
6	CYN	B	2602	7	1,1,1	0.18	0	-		
10	ACT	C	608	-	3,3,3	1.45	1 (33%)	3,3,3	1.51	1 (33%)
10	ACT	C	609	-	3,3,3	1.17	0	3,3,3	1.56	1 (33%)
10	ACT	C	607	-	3,3,3	1.05	0	3,3,3	1.56	1 (33%)
10	ACT	D	606	-	3,3,3	1.10	0	3,3,3	1.66	1 (33%)

Mol	Type	Chain	Res	Link	Bond lengths			Bond angles		
					Counts	RMSZ	# Z  > 2	Counts	RMSZ	# Z  > 2
8	NAG	C	602	2	14,14,15	0.86	1 (7%)	17,19,21	0.88	1 (5%)
6	CYN	A	1603	7	1,1,1	0.27	0	-		
10	ACT	D	607	-	3,3,3	1.39	1 (33%)	3,3,3	1.67	1 (33%)
7	HEM	C	601	6,2	42,50,50	1.29	6 (14%)	46,82,82	1.14	3 (6%)
8	NAG	D	603	2	14,14,15	0.44	0	17,19,21	0.78	1 (5%)
10	ACT	C	606	-	3,3,3	1.21	0	3,3,3	1.55	1 (33%)
6	CYN	D	609	-	1,1,1	0.24	0	-		
5	SO4	D	605	-	4,4,4	0.37	0	6,6,6	0.06	0
5	SO4	C	605	-	4,4,4	0.35	0	6,6,6	0.12	0
7	HEM	D	601	6,2	42,50,50	1.29	5 (11%)	46,82,82	1.14	3 (6%)
8	NAG	C	603	2	14,14,15	0.47	0	17,19,21	0.72	0
6	CYN	C	610	-	1,1,1	0.26	0	-		
10	ACT	D	608	-	3,3,3	1.31	1 (33%)	3,3,3	1.69	1 (33%)
5	SO4	A	1602	-	4,4,4	0.25	0	6,6,6	0.14	0

In the following table, the Chirals column lists the number of chiral outliers, the number of chiral centers analysed, the number of these observed in the model and the number defined in the Chemical Component Dictionary. Similar counts are reported in the Torsion and Rings columns. '-' means no outliers of that kind were identified.

Mol	Type	Chain	Res	Link	Chirals	Torsions	Rings
7	HEM	C	601	6,2	-	4/12/54/54	-
8	NAG	C	603	2	-	0/6/23/26	0/1/1/1
7	HEM	D	601	6,2	-	4/12/54/54	-
8	NAG	D	602	2	-	0/6/23/26	0/1/1/1
8	NAG	D	603	2	-	2/6/23/26	0/1/1/1
8	NAG	C	602	2	-	0/6/23/26	0/1/1/1

All (15) bond length outliers are listed below:

Mol	Chain	Res	Type	Atoms	Z	Observed(Å)	Ideal(Å)
7	D	601	HEM	CBB-CAB	3.30	1.46	1.30
7	C	601	HEM	CBB-CAB	3.23	1.45	1.30
7	D	601	HEM	C3C-C4C	2.87	1.45	1.41
8	C	602	NAG	C1-C2	2.67	1.56	1.52
7	D	601	HEM	C3C-CAC	-2.64	1.41	1.47
7	C	601	HEM	C3C-C4C	2.55	1.45	1.41
7	C	601	HEM	C3C-CAC	-2.55	1.41	1.47
7	D	601	HEM	CBC-CAC	2.45	1.44	1.29
7	C	601	HEM	CBC-CAC	2.44	1.44	1.29

*Continued on next page...*

Continued from previous page...

Mol	Chain	Res	Type	Atoms	Z	Observed(Å)	Ideal(Å)
7	C	601	HEM	CAB-C3B	-2.33	1.41	1.47
10	D	607	ACT	O-C	2.20	1.31	1.22
10	C	608	ACT	O-C	2.16	1.31	1.22
7	D	601	HEM	CAB-C3B	-2.07	1.41	1.47
10	D	608	ACT	O-C	2.04	1.31	1.22
7	C	601	HEM	CHA-C4D	2.01	1.39	1.34

All (16) bond angle outliers are listed below:

Mol	Chain	Res	Type	Atoms	Z	Observed(°)	Ideal(°)
7	D	601	HEM	C3B-C4B-NB	3.95	112.31	109.47
7	C	601	HEM	C3B-C4B-NB	3.14	111.72	109.47
7	C	601	HEM	C4C-CHD-C1D	2.41	125.73	122.56
8	D	603	NAG	C2-N2-C7	-2.30	119.82	122.90
10	D	608	ACT	O-C-CH3	-2.28	113.18	122.53
10	D	606	ACT	O-C-CH3	-2.27	113.23	122.53
10	D	607	ACT	O-C-CH3	-2.26	113.24	122.53
8	D	602	NAG	C1-O5-C5	2.25	115.20	112.19
7	D	601	HEM	C4C-CHD-C1D	2.14	125.38	122.56
10	C	607	ACT	O-C-CH3	-2.14	113.77	122.53
7	D	601	HEM	CMC-C2C-C3C	2.12	128.93	124.68
7	C	601	HEM	CMC-C2C-C3C	2.12	128.91	124.68
10	C	609	ACT	O-C-CH3	-2.11	113.89	122.53
10	C	606	ACT	O-C-CH3	-2.11	113.89	122.53
10	C	608	ACT	O-C-CH3	-2.05	114.12	122.53
8	C	602	NAG	C1-O5-C5	2.00	114.87	112.19

There are no chirality outliers.

All (10) torsion outliers are listed below:

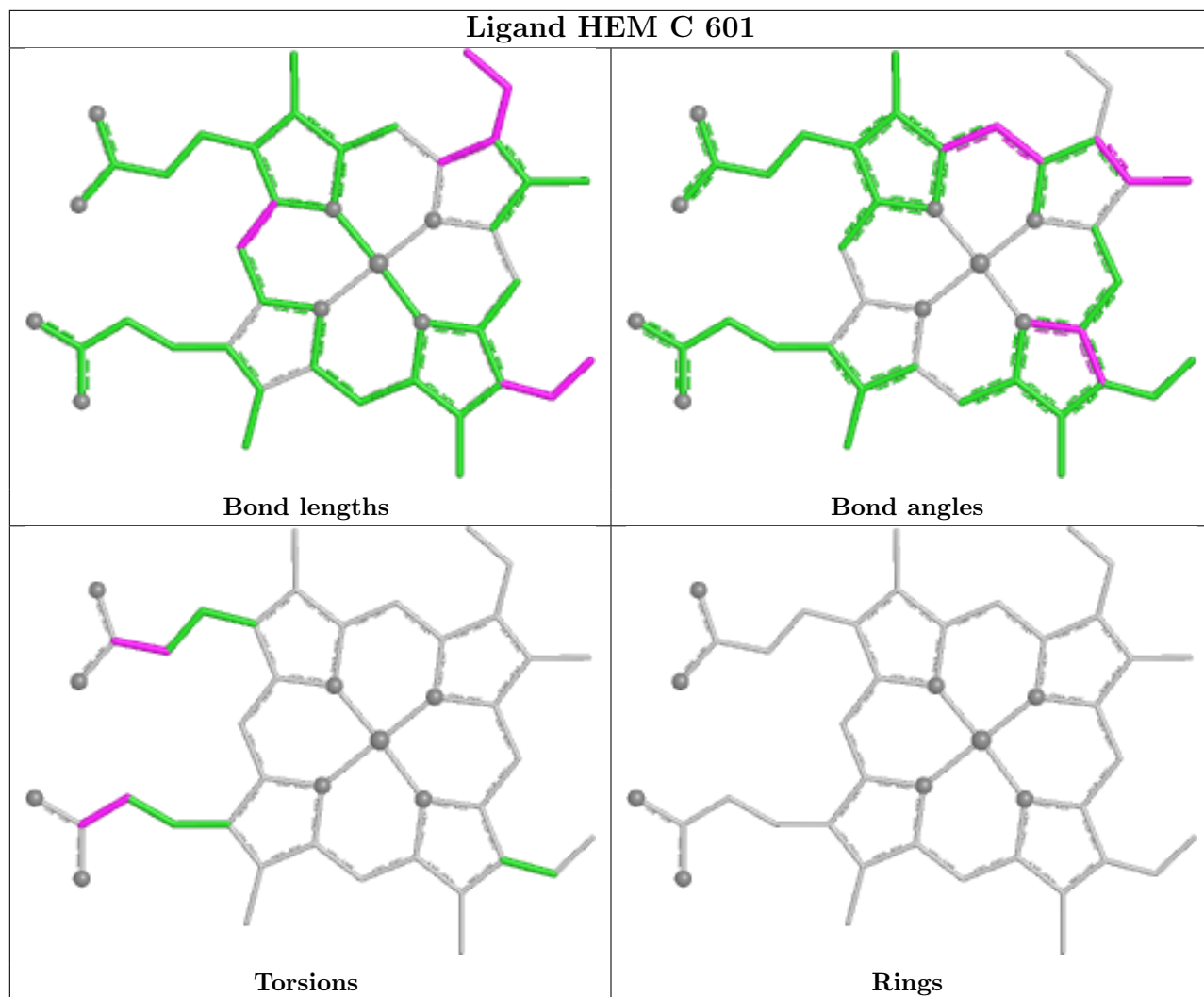
Mol	Chain	Res	Type	Atoms
8	D	603	NAG	C4-C5-C6-O6
7	C	601	HEM	CAD-CBD-CGD-O1D
7	C	601	HEM	CAD-CBD-CGD-O2D
7	D	601	HEM	CAD-CBD-CGD-O1D
7	D	601	HEM	CAD-CBD-CGD-O2D
8	D	603	NAG	O5-C5-C6-O6
7	D	601	HEM	CAA-CBA-CGA-O1A
7	C	601	HEM	CAA-CBA-CGA-O2A
7	C	601	HEM	CAA-CBA-CGA-O1A
7	D	601	HEM	CAA-CBA-CGA-O2A

There are no ring outliers.

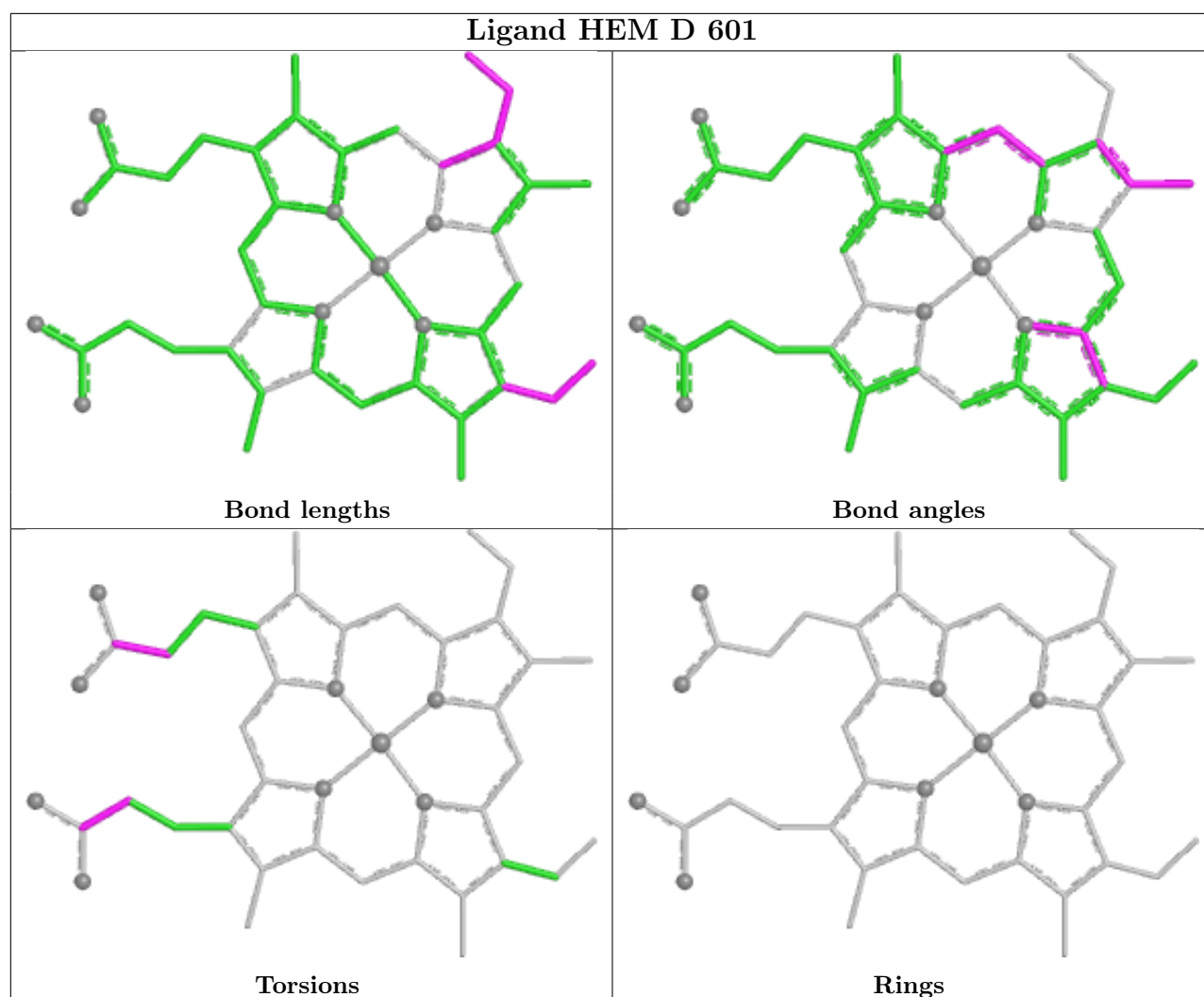
4 monomers are involved in 8 short contacts:

Mol	Chain	Res	Type	Clashes	Symm-Clashes
10	D	606	ACT	1	0
7	C	601	HEM	3	0
7	D	601	HEM	3	0
6	C	610	CYN	1	0

The following is a two-dimensional graphical depiction of Mogul quality analysis of bond lengths, bond angles, torsion angles, and ring geometry for all instances of the Ligand of Interest. In addition, ligands with molecular weight > 250 and outliers as shown on the validation Tables will also be included. For torsion angles, if less than 5% of the Mogul distribution of torsion angles is within 10 degrees of the torsion angle in question, then that torsion angle is considered an outlier. Any bond that is central to one or more torsion angles identified as an outlier by Mogul will be highlighted in the graph. For rings, the root-mean-square deviation (RMSD) between the ring in question and similar rings identified by Mogul is calculated over all ring torsion angles. If the average RMSD is greater than 60 degrees and the minimal RMSD between the ring in question and any Mogul-identified rings is also greater than 60 degrees, then that ring is considered an outlier. The outliers are highlighted in purple. The color gray indicates Mogul did not find sufficient equivalents in the CSD to analyse the geometry.







## 5.7 Other polymers [i](#)

There are no such residues in this entry.

## 5.8 Polymer linkage issues [i](#)

There are no chain breaks in this entry.

## 6 Fit of model and data

### 6.1 Protein, DNA and RNA chains

In the following table, the column labelled ‘#RSRZ > 2’ contains the number (and percentage) of RSRZ outliers, followed by percent RSRZ outliers for the chain as percentile scores relative to all X-ray entries and entries of similar resolution. The OWAB column contains the minimum, median, 95<sup>th</sup> percentile and maximum values of the occupancy-weighted average B-factor per residue. The column labelled ‘Q < 0.9’ lists the number of (and percentage) of residues with an average occupancy less than 0.9.

Mol	Chain	Analysed	<RSRZ>	#RSRZ>2	OWAB(Å <sup>2</sup> )	Q<0.9
1	A	104/104 (100%)	-0.45	4 (3%) 44 46	5, 9, 24, 54	0
1	B	104/104 (100%)	-0.50	0 100 100	6, 10, 20, 28	0
2	C	465/466 (99%)	-0.42	8 (1%) 69 71	4, 10, 24, 40	0
2	D	465/466 (99%)	-0.15	14 (3%) 52 55	5, 13, 30, 53	0
All	All	1138/1140 (99%)	-0.32	26 (2%) 61 63	4, 11, 28, 54	0

All (26) RSRZ outliers are listed below:

Mol	Chain	Res	Type	RSRZ
2	C	113	VAL	7.2
2	C	217	HIS	3.7
2	D	349	ARG	3.7
2	D	217	HIS	3.6
2	C	353	MET	3.1
1	A	4	GLN	3.0
2	D	226	ARG	3.0
2	D	267	LEU	2.8
2	D	355	PRO	2.8
2	D	356	ASN	2.8
2	D	578	ALA	2.8
2	D	113	VAL	2.7
2	D	576	ARG	2.7
1	A	3	GLU	2.7
2	D	348	ASN	2.5
2	C	139	ASN	2.4
2	D	353	MET	2.2
2	C	218	ASP	2.1
2	C	114	ASN	2.1
2	D	216	LEU	2.1
2	D	157	ASN	2.1

*Continued on next page...*

*Continued from previous page...*

Mol	Chain	Res	Type	RSRZ
1	A	1	CYS	2.0
1	A	2	PRO	2.0
2	C	355	PRO	2.0
2	D	568	PRO	2.0
2	C	356	ASN	2.0

## 6.2 Non-standard residues in protein, DNA, RNA chains [i](#)

In the following table, the Atoms column lists the number of modelled atoms in the group and the number defined in the chemical component dictionary. The B-factors column lists the minimum, median, 95<sup>th</sup> percentile and maximum values of B factors of atoms in the group. The column labelled 'Q< 0.9' lists the number of atoms with occupancy less than 0.9.

Mol	Type	Chain	Res	Atoms	RSCC	RSR	B-factors(Å <sup>2</sup> )	Q<0.9
2	CSO	C	150	7/8	0.95	0.07	6,9,10,12	0
2	CSO	D	150	7/8	0.95	0.06	5,6,9,13	0

## 6.3 Carbohydrates [i](#)

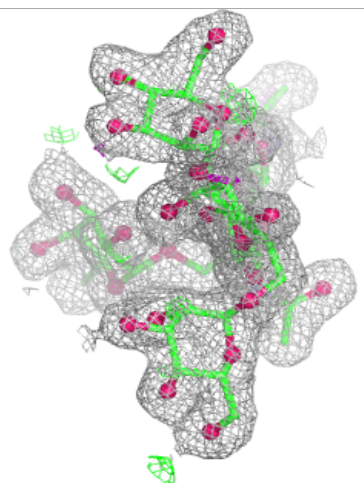
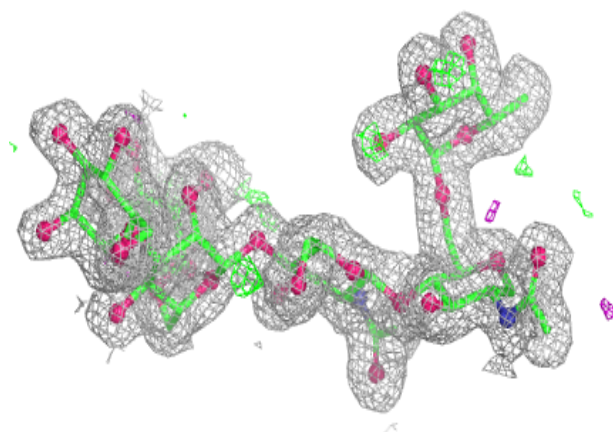
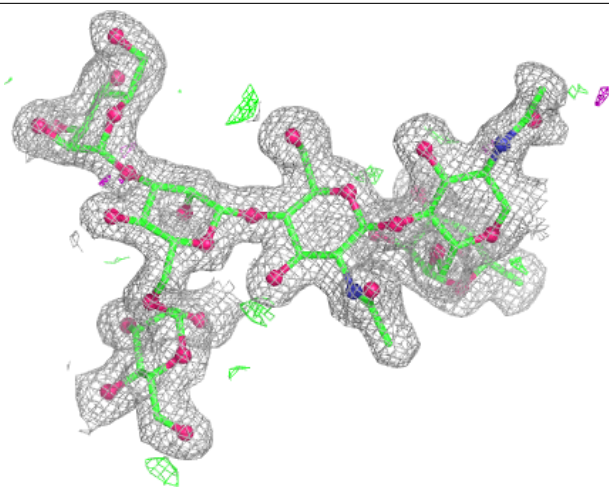
In the following table, the Atoms column lists the number of modelled atoms in the group and the number defined in the chemical component dictionary. The B-factors column lists the minimum, median, 95<sup>th</sup> percentile and maximum values of B factors of atoms in the group. The column labelled 'Q< 0.9' lists the number of atoms with occupancy less than 0.9.

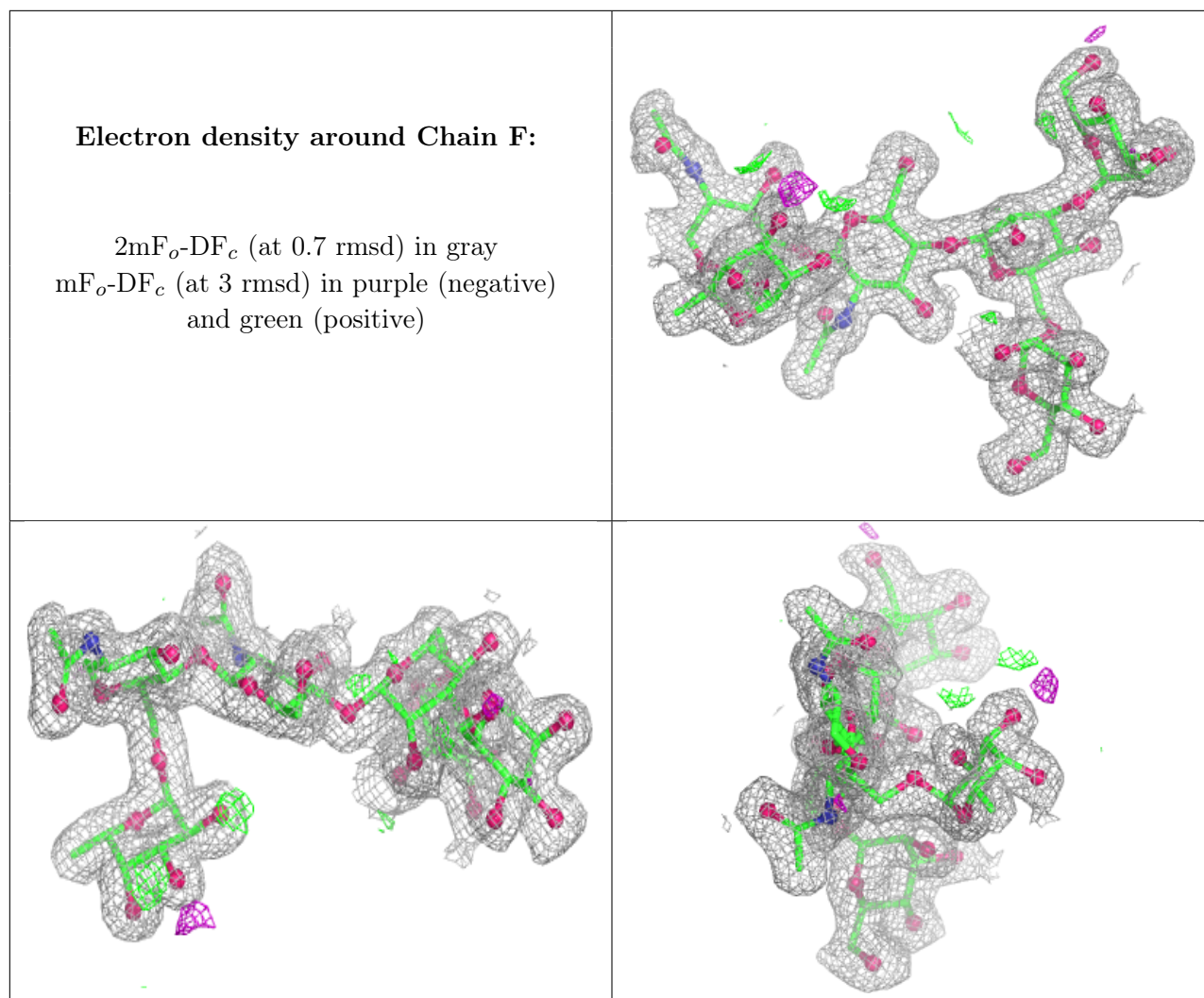
Mol	Type	Chain	Res	Atoms	RSCC	RSR	B-factors(Å <sup>2</sup> )	Q<0.9
3	MAN	F	4	11/12	0.84	0.11	16,21,24,25	0
3	MAN	E	4	11/12	0.92	0.08	18,21,22,26	0
3	FUC	E	6	10/11	0.95	0.06	11,12,13,14	0
3	NAG	E	1	14/15	0.96	0.06	8,10,14,16	0
3	NAG	E	2	14/15	0.96	0.06	6,9,10,11	0
3	BMA	E	3	11/12	0.96	0.06	9,10,13,16	0
3	FUC	F	6	10/11	0.96	0.05	9,12,13,14	0
3	NAG	F	2	14/15	0.97	0.05	5,8,11,12	0
3	BMA	F	3	11/12	0.97	0.05	8,10,11,12	0
3	MAN	E	5	11/12	0.97	0.05	10,12,15,16	0
3	MAN	F	5	11/12	0.97	0.05	8,12,13,13	0
3	NAG	F	1	14/15	0.97	0.06	7,12,17,18	0

The following is a graphical depiction of the model fit to experimental electron density for oligosaccharide. Each fit is shown from different orientation to approximate a three-dimensional view.

**Electron density around Chain E:**

$2mF_o-DF_c$  (at 0.7 rmsd) in gray  
 $mF_o-DF_c$  (at 3 rmsd) in purple (negative)  
and green (positive)





## 6.4 Ligands [i](#)

In the following table, the Atoms column lists the number of modelled atoms in the group and the number defined in the chemical component dictionary. The B-factors column lists the minimum, median, 95<sup>th</sup> percentile and maximum values of B factors of atoms in the group. The column labelled 'Q< 0.9' lists the number of atoms with occupancy less than 0.9.

Mol	Type	Chain	Res	Atoms	RSCC	RSR	B-factors(Å <sup>2</sup> )	Q<0.9
6	CYN	D	609	2/2	0.52	0.18	27,27,27,28	0
10	ACT	D	607	4/4	0.77	0.16	46,48,48,48	0
10	ACT	C	607	4/4	0.78	0.15	17,20,20,23	0
5	SO4	D	605	5/5	0.80	0.20	36,37,37,37	5
10	ACT	C	606	4/4	0.80	0.15	27,29,29,30	0
8	NAG	D	603	14/15	0.81	0.13	33,35,37,40	0
10	ACT	C	609	4/4	0.83	0.22	4,6,7,20	4
6	CYN	C	610	2/2	0.84	0.13	17,17,17,20	0
10	ACT	C	608	4/4	0.84	0.12	23,24,24,24	0

*Continued on next page...*

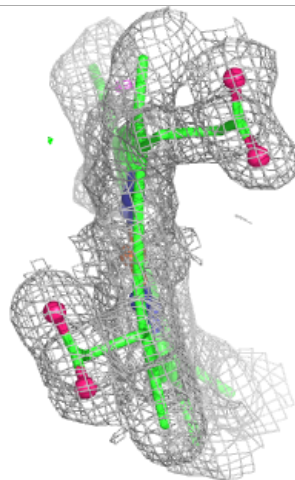
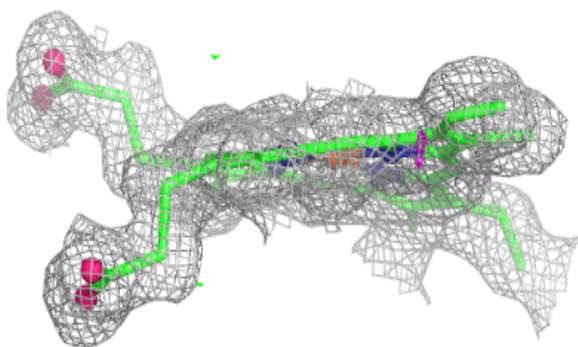
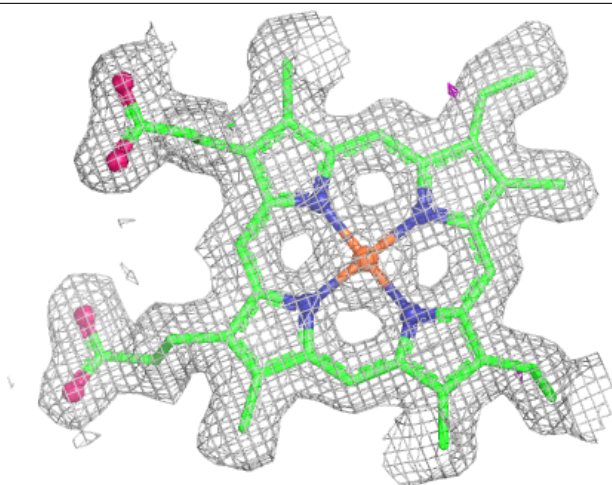
*Continued from previous page...*

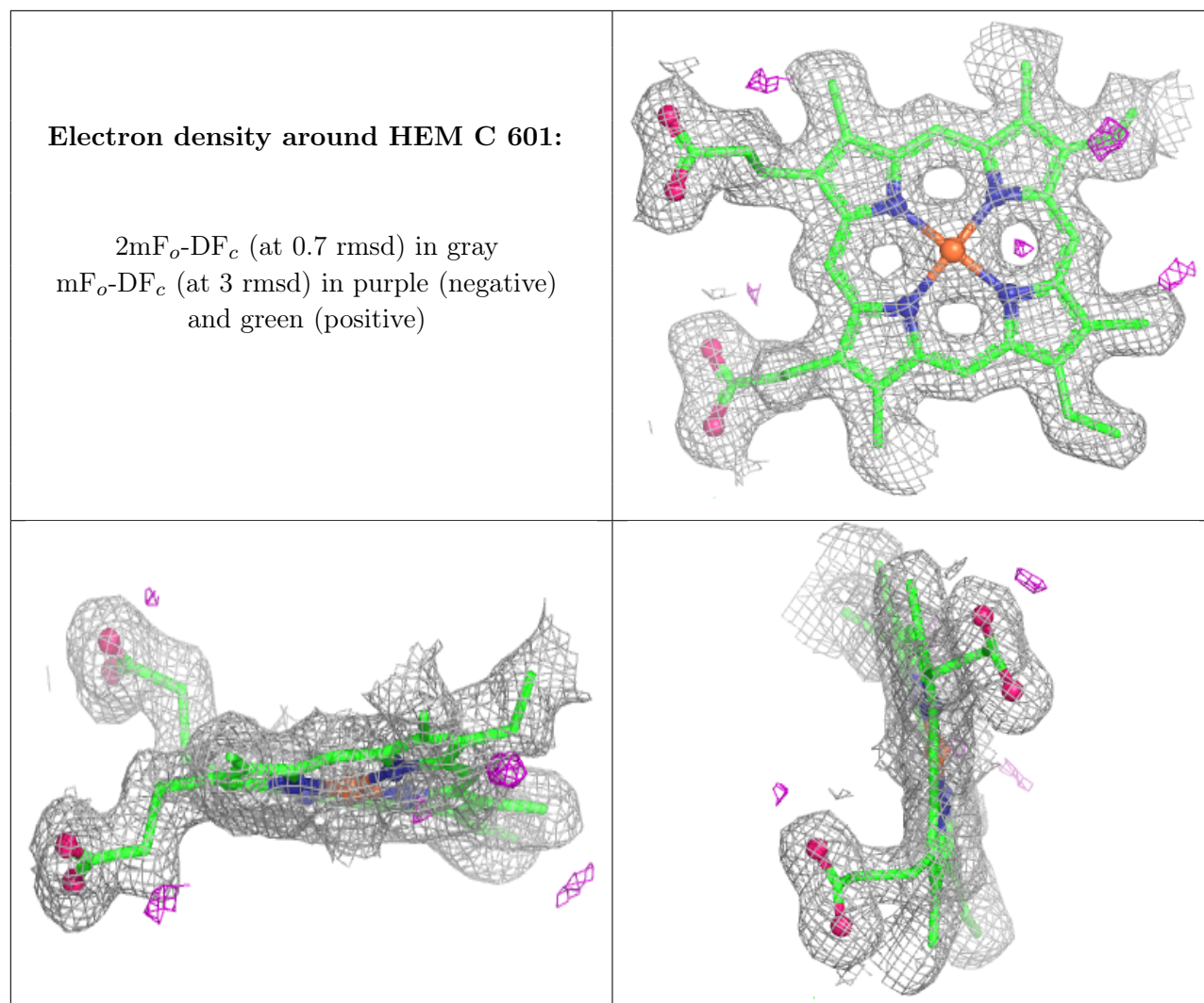
Mol	Type	Chain	Res	Atoms	RSCC	RSR	B-factors( $\text{\AA}^2$ )	Q<0.9
10	ACT	D	606	4/4	0.85	0.14	23,24,25,27	0
8	NAG	C	603	14/15	0.85	0.13	20,26,34,34	0
10	ACT	D	608	4/4	0.87	0.13	29,32,32,33	0
8	NAG	D	602	14/15	0.91	0.09	20,24,28,31	0
8	NAG	C	602	14/15	0.93	0.08	13,16,20,20	0
5	SO4	C	605	5/5	0.96	0.09	26,26,29,31	0
5	SO4	A	1602	5/5	0.97	0.07	25,25,27,28	0
7	HEM	D	601	43/43	0.98	0.05	4,7,8,10	0
6	CYN	B	2602	2/2	0.98	0.06	14,14,14,15	0
7	HEM	C	601	43/43	0.98	0.05	3,7,8,10	0
9	CA	C	604	1/1	0.99	0.02	8,8,8,8	0
6	CYN	A	1603	2/2	0.99	0.05	10,10,10,12	0
4	CL	B	2601	1/1	1.00	0.01	10,10,10,10	0
9	CA	D	604	1/1	1.00	0.02	9,9,9,9	0
4	CL	A	1601	1/1	1.00	0.01	8,8,8,8	0

The following is a graphical depiction of the model fit to experimental electron density of all instances of the Ligand of Interest. In addition, ligands with molecular weight > 250 and outliers as shown on the geometry validation Tables will also be included. Each fit is shown from different orientation to approximate a three-dimensional view.

**Electron density around HEM D 601:**

$2mF_o-DF_c$  (at 0.7 rmsd) in gray  
 $mF_o-DF_c$  (at 3 rmsd) in purple (negative)  
and green (positive)





## 6.5 Other polymers [i](#)

There are no such residues in this entry.