



# Full wwPDB X-ray Structure Validation Report ⓘ

Jun 17, 2024 – 12:39 AM EDT

PDB ID : 3D52  
Title : GOLGI MANNOSIDASE II complex with an N-aryl carbamate derivative of gluco-hydroxyiminolactam  
Authors : Kuntz, D.A.; Tarling, C.A.; Withers, S.G.; Rose, D.R.  
Deposited on : 2008-05-15  
Resolution : 1.60 Å(reported)

This is a Full wwPDB X-ray Structure Validation Report for a publicly released PDB entry.

We welcome your comments at [validation@mail.wwpdb.org](mailto:validation@mail.wwpdb.org)

A user guide is available at

<https://www.wwpdb.org/validation/2017/XrayValidationReportHelp>

with specific help available everywhere you see the ⓘ symbol.

The types of validation reports are described at

<http://www.wwpdb.org/validation/2017/FAQs#types>.

---

The following versions of software and data (see [references ⓘ](#)) were used in the production of this report:

MolProbity : 4.02b-467  
Mogul : 2022.3.0, CSD as543be (2022)  
Xtrriage (Phenix) : 1.20.1  
EDS : 2.37.1  
buster-report : 1.1.7 (2018)  
Percentile statistics : 20191225.v01 (using entries in the PDB archive December 25th 2019)  
Refmac : 5.8.0158  
CCP4 : 7.0.044 (Gargrove)  
Ideal geometry (proteins) : Engh & Huber (2001)  
Ideal geometry (DNA, RNA) : Parkinson et al. (1996)  
Validation Pipeline (wwPDB-VP) : 2.37.1

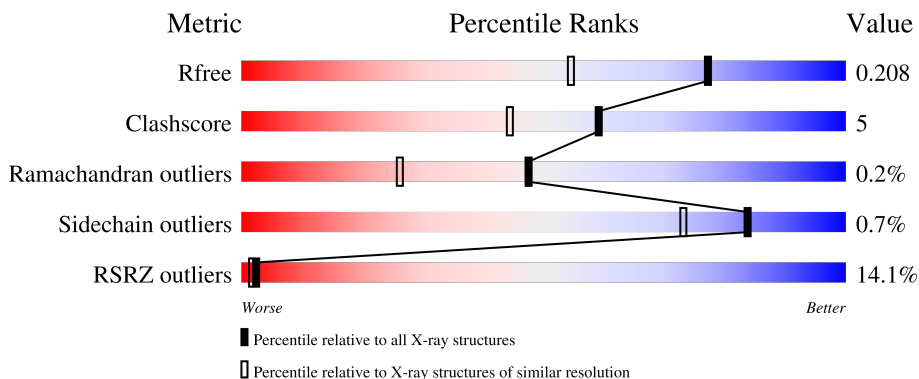
# 1 Overall quality at a glance

The following experimental techniques were used to determine the structure:

*X-RAY DIFFRACTION*

The reported resolution of this entry is 1.60 Å.

Percentile scores (ranging between 0-100) for global validation metrics of the entry are shown in the following graphic. The table shows the number of entries on which the scores are based.



Metric	Whole archive (#Entries)	Similar resolution (#Entries, resolution range(Å))
$R_{free}$	130704	3398 (1.60-1.60)
Clashscore	141614	3665 (1.60-1.60)
Ramachandran outliers	138981	3564 (1.60-1.60)
Sidechain outliers	138945	3563 (1.60-1.60)
RSRZ outliers	127900	3321 (1.60-1.60)

The table below summarises the geometric issues observed across the polymeric chains and their fit to the electron density. The red, orange, yellow and green segments of the lower bar indicate the fraction of residues that contain outliers for  $\geq 3$ , 2, 1 and 0 types of geometric quality criteria respectively. A grey segment represents the fraction of residues that are not modelled. The numeric value for each fraction is indicated below the corresponding segment, with a dot representing fractions  $\leq 5\%$ . The upper red bar (where present) indicates the fraction of residues that have poor fit to the electron density. The numeric value is given above the bar.

Mol	Chain	Length	Quality of chain
1	A	1045	

## 2 Entry composition [i](#)

There are 5 unique types of molecules in this entry. The entry contains 9128 atoms, of which 0 are hydrogens and 0 are deuteriums.

In the tables below, the ZeroOcc column contains the number of atoms modelled with zero occupancy, the AltConf column contains the number of residues with at least one atom in alternate conformation and the Trace column contains the number of residues modelled with at most 2 atoms.

- Molecule 1 is a protein called Alpha-mannosidase 2.

Mol	Chain	Residues	Atoms					ZeroOcc	AltConf	Trace
			Total	C	N	O	S			
1	A	1016	8209	5218	1440	1511	40	0	2	0

There are 13 discrepancies between the modelled and reference sequences:

Chain	Residue	Modelled	Actual	Comment	Reference
A	1	ARG	-	EXPRESSION TAG	UNP Q24451
A	2	SER	-	EXPRESSION TAG	UNP Q24451
A	3	SER	-	EXPRESSION TAG	UNP Q24451
A	4	HIS	-	EXPRESSION TAG	UNP Q24451
A	5	HIS	-	EXPRESSION TAG	UNP Q24451
A	6	HIS	-	EXPRESSION TAG	UNP Q24451
A	7	HIS	-	EXPRESSION TAG	UNP Q24451
A	8	HIS	-	EXPRESSION TAG	UNP Q24451
A	9	HIS	-	EXPRESSION TAG	UNP Q24451
A	10	GLY	-	EXPRESSION TAG	UNP Q24451
A	11	GLU	-	EXPRESSION TAG	UNP Q24451
A	12	PHE	-	EXPRESSION TAG	UNP Q24451
A	907	LYS	GLU	SEE REMARK 999	UNP Q24451

- Molecule 2 is ZINC ION (three-letter code: ZN) (formula: Zn).

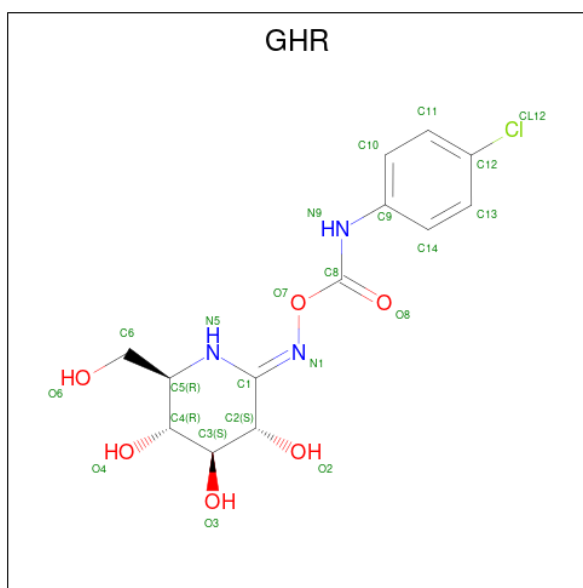
Mol	Chain	Residues	Atoms		ZeroOcc	AltConf
2	A	1	Total	Zn	0	0
			1	1		

- Molecule 3 is (4R)-2-METHYLPENTANE-2,4-DIOL (three-letter code: MRD) (formula: C<sub>6</sub>H<sub>14</sub>O<sub>2</sub>).



Mol	Chain	Residues	Atoms				ZeroOcc	AltConf
3	A	1	Total	C	O			
			8	6	2	0	0	

- Molecule 4 is [(3S,4S,5R,6R)-3,4,5-trihydroxy-6-(hydroxymethyl)piperidin-2-ylidene]amino] N-(4-chlorophenyl)carbamate (three-letter code: GHR) (formula: C<sub>13</sub>H<sub>16</sub>ClN<sub>3</sub>O<sub>6</sub>).



Mol	Chain	Residues	Atoms					ZeroOcc	AltConf
4	A	1	Total	C	Cl	N	O		
			35	20	2	5	8	0	1

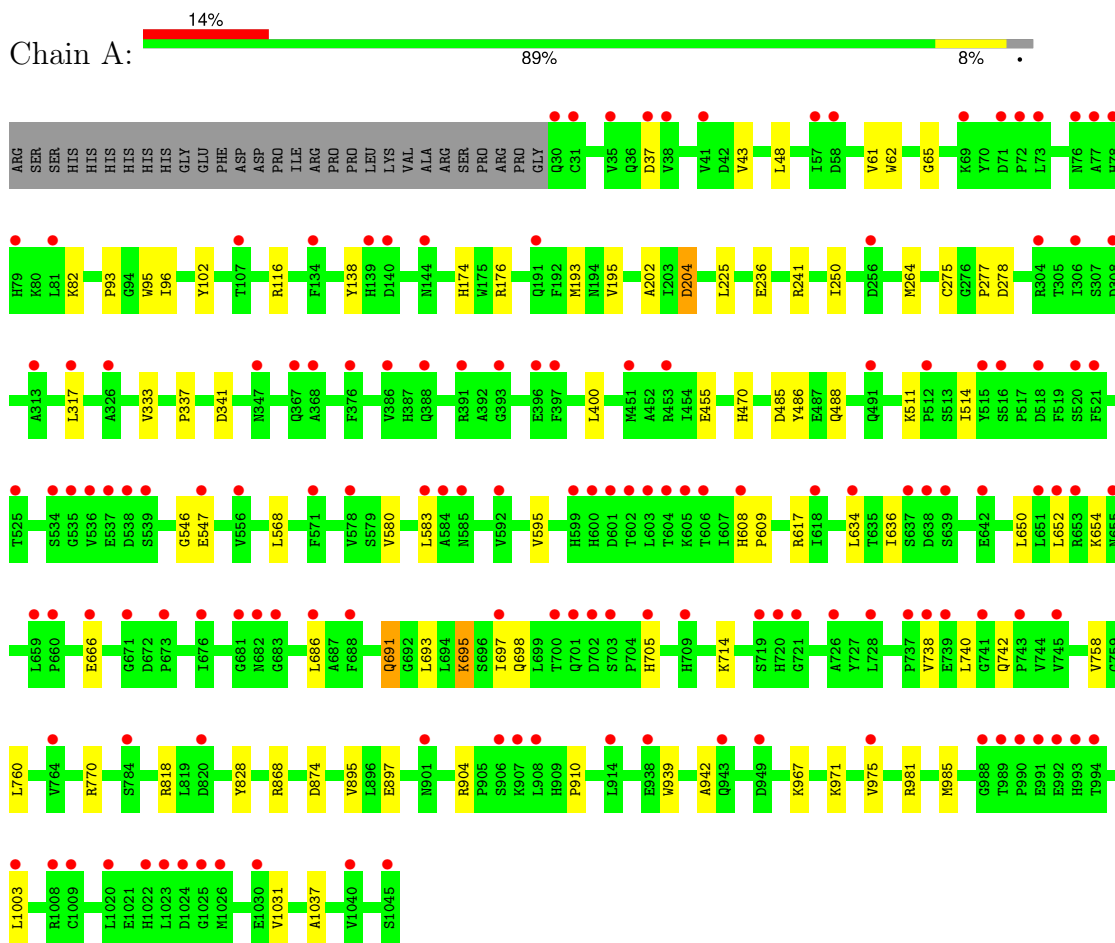
- Molecule 5 is water.

Mol	Chain	Residues	Atoms		ZeroOcc	AltConf
5	A	874	Total 875	O 875	0	1

### 3 Residue-property plots

These plots are drawn for all protein, RNA, DNA and oligosaccharide chains in the entry. The first graphic for a chain summarises the proportions of the various outlier classes displayed in the second graphic. The second graphic shows the sequence view annotated by issues in geometry and electron density. Residues are color-coded according to the number of geometric quality criteria for which they contain at least one outlier: green = 0, yellow = 1, orange = 2 and red = 3 or more. A red dot above a residue indicates a poor fit to the electron density ( $RSRZ > 2$ ). Stretches of 2 or more consecutive residues without any outlier are shown as a green connector. Residues present in the sample, but not in the model, are shown in grey.

- Molecule 1: Alpha-mannosidase 2



## 4 Data and refinement statistics

Property	Value	Source
Space group	P 21 21 21	Depositor
Cell constants a, b, c, $\alpha$ , $\beta$ , $\gamma$	68.58Å 107.91Å 137.06Å 90.00° 90.00° 90.00°	Depositor
Resolution (Å)	19.72 – 1.60 19.72 – 1.60	Depositor EDS
% Data completeness (in resolution range)	97.5 (19.72-1.60) 97.5 (19.72-1.60)	Depositor EDS
$R_{merge}$	0.09	Depositor
$R_{sym}$	(Not available)	Depositor
$\langle I/\sigma(I) \rangle$ <sup>1</sup>	6.51 (at 1.60Å)	Xtrriage
Refinement program	REFMAC, CNS	Depositor
R, $R_{free}$	0.228 , 0.240 0.208 , 0.208	Depositor DCC
$R_{free}$ test set	1930 reflections (1.47%)	wwPDB-VP
Wilson B-factor (Å <sup>2</sup> )	17.1	Xtrriage
Anisotropy	0.021	Xtrriage
Bulk solvent $k_{sol}$ (e/Å <sup>3</sup> ), $B_{sol}$ (Å <sup>2</sup> )	0.52 , 80.0	EDS
L-test for twinning <sup>2</sup>	$\langle  L  \rangle = 0.50$ , $\langle L^2 \rangle = 0.33$	Xtrriage
Estimated twinning fraction	No twinning to report.	Xtrriage
$F_o, F_c$ correlation	0.91	EDS
Total number of atoms	9128	wwPDB-VP
Average B, all atoms (Å <sup>2</sup> )	17.0	wwPDB-VP

Xtrriage's analysis on translational NCS is as follows: *The largest off-origin peak in the Patterson function is 3.26% of the height of the origin peak. No significant pseudotranslation is detected.*

<sup>1</sup>Intensities estimated from amplitudes.

<sup>2</sup>Theoretical values of  $\langle |L| \rangle$ ,  $\langle L^2 \rangle$  for acentric reflections are 0.5, 0.333 respectively for untwinned datasets, and 0.375, 0.2 for perfectly twinned datasets.

## 5 Model quality [i](#)

### 5.1 Standard geometry [i](#)

Bond lengths and bond angles in the following residue types are not validated in this section: MRD, ZN, GHR

The Z score for a bond length (or angle) is the number of standard deviations the observed value is removed from the expected value. A bond length (or angle) with  $|Z| > 5$  is considered an outlier worth inspection. RMSZ is the root-mean-square of all Z scores of the bond lengths (or angles).

Mol	Chain	Bond lengths		Bond angles	
		RMSZ	# Z  >5	RMSZ	# Z  >5
1	A	0.80	0/8437	0.89	5/11456 (0.0%)

There are no bond length outliers.

All (5) bond angle outliers are listed below:

Mol	Chain	Res	Type	Atoms	Z	Observed(°)	Ideal(°)
1	A	486	TYR	CB-CG-CD2	-5.60	117.64	121.00
1	A	818[A]	ARG	NE-CZ-NH1	5.25	122.92	120.30
1	A	818[B]	ARG	NE-CZ-NH1	5.25	122.92	120.30
1	A	981	ARG	NE-CZ-NH2	-5.24	117.68	120.30
1	A	874	ASP	CB-CG-OD2	-5.01	113.79	118.30

There are no chirality outliers.

There are no planarity outliers.

### 5.2 Too-close contacts [i](#)

In the following table, the Non-H and H(model) columns list the number of non-hydrogen atoms and hydrogen atoms in the chain respectively. The H(added) column lists the number of hydrogen atoms added and optimized by MolProbity. The Clashes column lists the number of clashes within the asymmetric unit, whereas Symm-Clashes lists symmetry-related clashes.

Mol	Chain	Non-H	H(model)	H(added)	Clashes	Symm-Clashes
1	A	8209	0	8001	66	0
2	A	1	0	0	0	0
3	A	8	0	14	3	0
4	A	35	0	10	10	0
5	A	875	0	0	25	0
All	All	9128	0	8025	77	0



The all-atom clashscore is defined as the number of clashes found per 1000 atoms (including hydrogen atoms). The all-atom clashscore for this structure is 5.

All (77) close contacts within the same asymmetric unit are listed below, sorted by their clash magnitude.

Atom-1	Atom-2	Interatomic distance (Å)	Clash overlap (Å)
1:A:583:LEU:O	1:A:583:LEU:HD23	1.77	0.84
1:A:693:LEU:HD13	5:A:1741:HOH:O	1.78	0.82
1:A:264[B]:MET:CE	1:A:337:PRO:HG2	2.11	0.81
1:A:264[B]:MET:HE1	1:A:337:PRO:HG2	1.64	0.80
1:A:225:LEU:CD2	5:A:1705:HOH:O	2.30	0.79
1:A:96:ILE:HD11	5:A:1760:HOH:O	1.83	0.79
1:A:61:VAL:HG23	5:A:1716:HOH:O	1.84	0.78
3:A:1047:MRD:H1C3	5:A:1164:HOH:O	1.83	0.77
1:A:195:VAL:HG23	5:A:1422:HOH:O	1.85	0.75
1:A:740:LEU:HD22	1:A:760:LEU:HD22	1.70	0.74
1:A:195:VAL:CG2	5:A:1422:HOH:O	2.36	0.73
1:A:547:GLU:HG2	5:A:1539:HOH:O	1.88	0.72
1:A:96:ILE:CD1	5:A:1760:HOH:O	2.36	0.70
1:A:904:ARG:HG2	1:A:985:MET:SD	2.32	0.69
1:A:225:LEU:HD23	5:A:1705:HOH:O	1.92	0.66
1:A:202:ALA:N	5:A:1705:HOH:O	2.30	0.63
1:A:278:ASP:HB2	5:A:1716:HOH:O	1.97	0.63
1:A:975:VAL:HG21	1:A:1003:LEU:CD1	2.29	0.63
1:A:225:LEU:HD22	5:A:1705:HOH:O	1.94	0.62
4:A:1048[B]:GHR:O8	4:A:1048[B]:GHR:H10	2.00	0.61
1:A:546:GLY:HA2	1:A:636:ILE:HD13	1.83	0.60
1:A:174:HIS:CE1	1:A:176:ARG:HD3	2.36	0.59
1:A:96:ILE:HG12	1:A:102:TYR:OH	2.03	0.58
1:A:116:ARG:CZ	5:A:1895:HOH:O	2.51	0.58
1:A:264[B]:MET:HE3	1:A:337:PRO:HG2	1.86	0.58
1:A:971:LYS:HB2	1:A:971:LYS:NZ	2.19	0.56
3:A:1047:MRD:H5C3	3:A:1047:MRD:HMC1	1.87	0.56
1:A:714:LYS:HE3	1:A:738:VAL:HG22	1.87	0.55
3:A:1047:MRD:H1C1	5:A:1160:HOH:O	2.06	0.55
1:A:568:LEU:HD12	1:A:770:ARG:HD3	1.90	0.53
1:A:666:GLU:HG3	5:A:1876:HOH:O	2.09	0.52
1:A:488:GLN:HB3	5:A:1788:HOH:O	2.10	0.52
1:A:61:VAL:CG2	5:A:1716:HOH:O	2.48	0.52
1:A:278:ASP:N	5:A:1716:HOH:O	2.43	0.51
1:A:511:LYS:HD3	1:A:514:ILE:CD1	2.42	0.50
1:A:82:LYS:HE3	1:A:333:VAL:HG22	1.93	0.50
1:A:485:ASP:HA	1:A:488:GLN:OE1	2.11	0.50

*Continued on next page...*

*Continued from previous page...*

Atom-1	Atom-2	Interatomic distance (Å)	Clash overlap (Å)
1:A:1031:VAL:HG11	1:A:1037:ALA:HB3	1.94	0.50
1:A:62:TRP:CD2	1:A:65:GLY:HA3	2.47	0.50
4:A:1048[B]:GHR:O8	4:A:1048[B]:GHR:C10	2.54	0.49
1:A:691:GLN:O	1:A:758:VAL:HG21	2.12	0.49
1:A:277:PRO:C	5:A:1716:HOH:O	2.50	0.49
1:A:455:GLU:HG2	1:A:967:LYS:HZ2	1.77	0.48
1:A:48:LEU:HD11	1:A:236:GLU:HG2	1.95	0.48
1:A:341:ASP:OD2	4:A:1048[A]:GHR:N1	2.45	0.48
1:A:695:LYS:HB2	1:A:695:LYS:HE3	1.52	0.48
1:A:650:LEU:HD21	1:A:652:LEU:HD21	1.96	0.48
1:A:975:VAL:HG21	1:A:1003:LEU:HD12	1.95	0.48
1:A:250:ILE:HB	1:A:910:PRO:HG2	1.97	0.47
1:A:278:ASP:CA	5:A:1716:HOH:O	2.63	0.47
1:A:583:LEU:O	1:A:583:LEU:CD2	2.56	0.47
1:A:341:ASP:OD2	4:A:1048[B]:GHR:N1	2.47	0.46
1:A:895:VAL:HG12	1:A:897:GLU:HG3	1.97	0.46
1:A:37:ASP:N	5:A:1126:HOH:O	2.36	0.46
1:A:691:GLN:NE2	5:A:1739:HOH:O	2.38	0.46
1:A:595:VAL:HG22	1:A:617:ARG:HG3	1.98	0.45
1:A:241:ARG:NH1	5:A:1138:HOH:O	2.32	0.44
1:A:666:GLU:CG	5:A:1876:HOH:O	2.63	0.44
1:A:138:TYR:CE1	1:A:193:MET:CE	3.00	0.44
1:A:264[B]:MET:HE3	1:A:337:PRO:CG	2.47	0.44
4:A:1048[A]:GHR:C10	4:A:1048[A]:GHR:O7	2.65	0.43
1:A:43:VAL:O	1:A:400:LEU:HA	2.18	0.43
1:A:686:LEU:HD22	1:A:697:ILE:HG12	2.00	0.43
1:A:939:TRP:CD2	1:A:942:ALA:HB2	2.54	0.43
1:A:93:PRO:HD2	1:A:470:HIS:CE1	2.54	0.42
1:A:698:GLN:HB2	1:A:705:HIS:ND1	2.35	0.42
1:A:580:VAL:HG22	1:A:634:LEU:HD22	2.02	0.42
1:A:455:GLU:HB3	1:A:967:LYS:HZ1	1.84	0.42
1:A:608:HIS:HB2	1:A:609:PRO:HD2	2.02	0.41
1:A:264[B]:MET:CE	1:A:337:PRO:CG	2.93	0.41
1:A:654:LYS:HG3	1:A:742:GLN:NE2	2.37	0.40

There are no symmetry-related clashes.

## 5.3 Torsion angles [i](#)

### 5.3.1 Protein backbone [i](#)

In the following table, the Percentiles column shows the percent Ramachandran outliers of the chain as a percentile score with respect to all X-ray entries followed by that with respect to entries of similar resolution.

The Analysed column shows the number of residues for which the backbone conformation was analysed, and the total number of residues.

Mol	Chain	Analysed	Favoured	Allowed	Outliers	Percentiles
1	A	1016/1045 (97%)	992 (98%)	22 (2%)	2 (0%)	47 26

All (2) Ramachandran outliers are listed below:

Mol	Chain	Res	Type
1	A	95	TRP
1	A	204	ASP

### 5.3.2 Protein sidechains [i](#)

In the following table, the Percentiles column shows the percent sidechain outliers of the chain as a percentile score with respect to all X-ray entries followed by that with respect to entries of similar resolution.

The Analysed column shows the number of residues for which the sidechain conformation was analysed, and the total number of residues.

Mol	Chain	Analysed	Rotameric	Outliers	Percentiles
1	A	904/929 (97%)	898 (99%)	6 (1%)	84 73

All (6) residues with a non-rotameric sidechain are listed below:

Mol	Chain	Res	Type
1	A	275	CYS
1	A	317	LEU
1	A	691	GLN
1	A	695	LYS
1	A	828	TYR
1	A	868	ARG

Sometimes sidechains can be flipped to improve hydrogen bonding and reduce clashes. All (1) such sidechains are listed below:

Mol	Chain	Res	Type
1	A	144	ASN

### 5.3.3 RNA [i](#)

There are no RNA molecules in this entry.

### 5.4 Non-standard residues in protein, DNA, RNA chains [i](#)

There are no non-standard protein/DNA/RNA residues in this entry.

### 5.5 Carbohydrates [i](#)

There are no monosaccharides in this entry.

### 5.6 Ligand geometry [i](#)

Of 4 ligands modelled in this entry, 1 is monoatomic - leaving 3 for Mogul analysis.

In the following table, the Counts columns list the number of bonds (or angles) for which Mogul statistics could be retrieved, the number of bonds (or angles) that are observed in the model and the number of bonds (or angles) that are defined in the Chemical Component Dictionary. The Link column lists molecule types, if any, to which the group is linked. The Z score for a bond length (or angle) is the number of standard deviations the observed value is removed from the expected value. A bond length (or angle) with  $|Z| > 2$  is considered an outlier worth inspection. RMSZ is the root-mean-square of all Z scores of the bond lengths (or angles).

Mol	Type	Chain	Res	Link	Bond lengths			Bond angles		
					Counts	RMSZ	# Z  > 2	Counts	RMSZ	# Z  > 2
4	GHR	A	1048[A]	-	22,24,24	1.30	2 (9%)	27,33,33	1.38	6 (22%)
3	MRD	A	1047	-	7,7,7	0.38	0	9,10,10	0.63	0
4	GHR	A	1048[B]	-	22,24,24	1.47	2 (9%)	27,33,33	1.22	4 (14%)

In the following table, the Chirals column lists the number of chiral outliers, the number of chiral centers analysed, the number of these observed in the model and the number defined in the Chemical Component Dictionary. Similar counts are reported in the Torsion and Rings columns. '-' means no outliers of that kind were identified.

Mol	Type	Chain	Res	Link	Chirals	Torsions	Rings
4	GHR	A	1048[A]	-	-	3/8/31/31	0/2/2/2
3	MRD	A	1047	-	-	2/5/5/5	-

*Continued on next page...*

Continued from previous page...

Mol	Type	Chain	Res	Link	Chirals	Torsions	Rings
4	GHR	A	1048[B]	-	-	2/8/31/31	0/2/2/2

All (4) bond length outliers are listed below:

Mol	Chain	Res	Type	Atoms	Z	Observed(Å)	Ideal(Å)
4	A	1048[B]	GHR	C9-N9	-4.44	1.32	1.41
4	A	1048[A]	GHR	C9-N9	-4.01	1.33	1.41
4	A	1048[B]	GHR	O7-N1	-3.81	1.36	1.44
4	A	1048[A]	GHR	O7-N1	-3.08	1.37	1.44

All (10) bond angle outliers are listed below:

Mol	Chain	Res	Type	Atoms	Z	Observed(°)	Ideal(°)
4	A	1048[A]	GHR	O8-C8-N9	-3.08	119.57	126.12
4	A	1048[B]	GHR	O8-C8-N9	-2.35	121.13	126.12
4	A	1048[A]	GHR	C4-C5-N5	2.22	114.26	110.47
4	A	1048[B]	GHR	C4-C5-N5	2.22	114.26	110.47
4	A	1048[A]	GHR	N5-C1-N1	-2.21	121.92	125.19
4	A	1048[A]	GHR	C10-C11-C12	2.21	121.47	119.24
4	A	1048[B]	GHR	C9-N9-C8	-2.19	122.93	126.39
4	A	1048[A]	GHR	C13-C12-C11	-2.09	118.65	121.24
4	A	1048[A]	GHR	C3-C2-C1	-2.06	106.20	110.28
4	A	1048[B]	GHR	C3-C2-C1	-2.06	106.20	110.28

There are no chirality outliers.

All (7) torsion outliers are listed below:

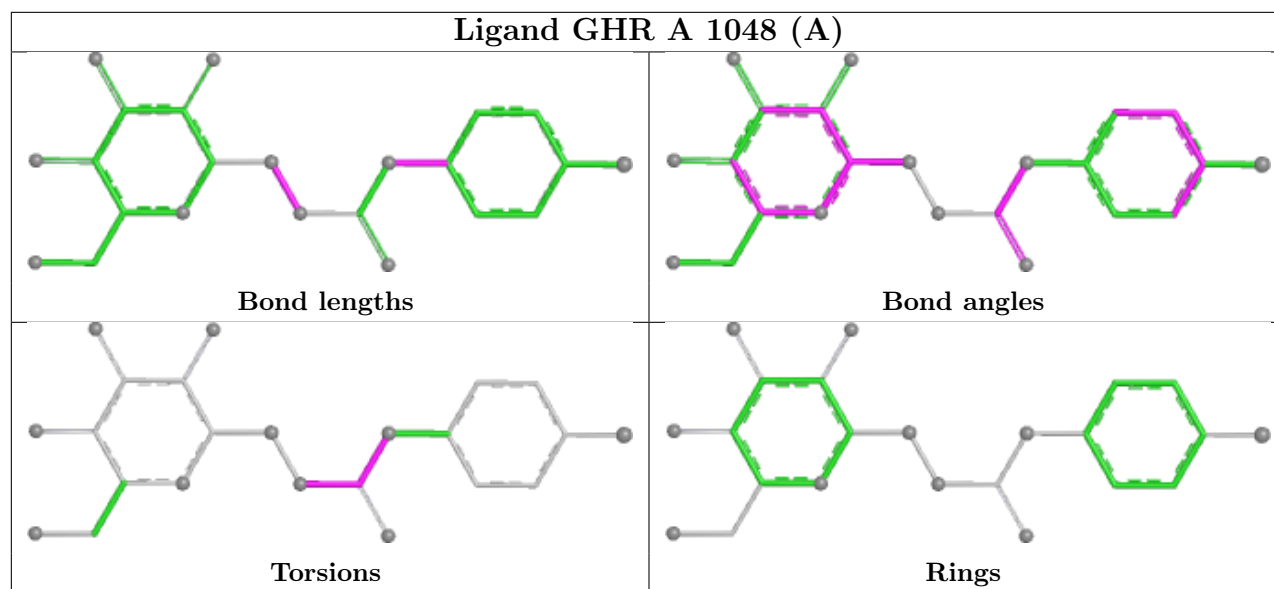
Mol	Chain	Res	Type	Atoms
3	A	1047	MRD	C2-C3-C4-O4
3	A	1047	MRD	C2-C3-C4-C5
4	A	1048[A]	GHR	N9-C8-O7-N1
4	A	1048[A]	GHR	O8-C8-O7-N1
4	A	1048[B]	GHR	N9-C8-O7-N1
4	A	1048[B]	GHR	O8-C8-O7-N1
4	A	1048[A]	GHR	O8-C8-N9-C9

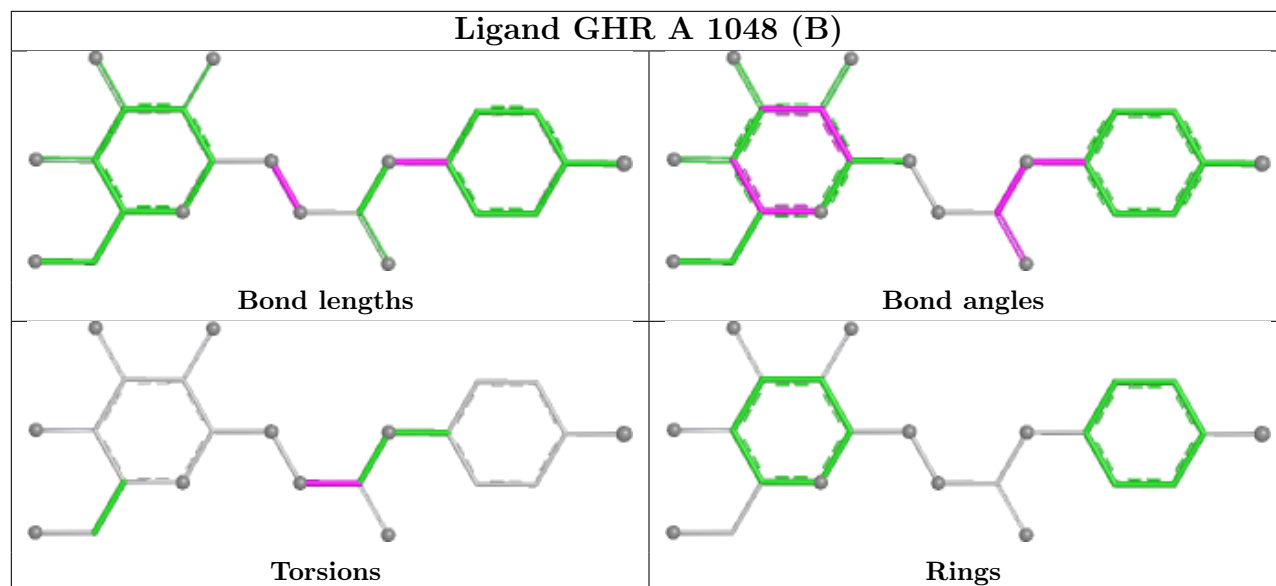
There are no ring outliers.

3 monomers are involved in 13 short contacts:

Mol	Chain	Res	Type	Clashes	Symm-Clashes
4	A	1048[A]	GHR	4	0
3	A	1047	MRD	3	0
4	A	1048[B]	GHR	6	0

The following is a two-dimensional graphical depiction of Mogul quality analysis of bond lengths, bond angles, torsion angles, and ring geometry for all instances of the Ligand of Interest. In addition, ligands with molecular weight > 250 and outliers as shown on the validation Tables will also be included. For torsion angles, if less than 5% of the Mogul distribution of torsion angles is within 10 degrees of the torsion angle in question, then that torsion angle is considered an outlier. Any bond that is central to one or more torsion angles identified as an outlier by Mogul will be highlighted in the graph. For rings, the root-mean-square deviation (RMSD) between the ring in question and similar rings identified by Mogul is calculated over all ring torsion angles. If the average RMSD is greater than 60 degrees and the minimal RMSD between the ring in question and any Mogul-identified rings is also greater than 60 degrees, then that ring is considered an outlier. The outliers are highlighted in purple. The color gray indicates Mogul did not find sufficient equivalents in the CSD to analyse the geometry.





## 5.7 Other polymers [i](#)

There are no such residues in this entry.

## 5.8 Polymer linkage issues [i](#)

There are no chain breaks in this entry.

## 6 Fit of model and data

### 6.1 Protein, DNA and RNA chains

In the following table, the column labelled ‘#RSRZ > 2’ contains the number (and percentage) of RSRZ outliers, followed by percent RSRZ outliers for the chain as percentile scores relative to all X-ray entries and entries of similar resolution. The OWAB column contains the minimum, median, 95<sup>th</sup> percentile and maximum values of the occupancy-weighted average B-factor per residue. The column labelled ‘Q < 0.9’ lists the number of (and percentage) of residues with an average occupancy less than 0.9.

Mol	Chain	Analysed	<RSRZ>	#RSRZ>2	OWAB(Å <sup>2</sup> )	Q<0.9
1	A	1016/1045 (97%)	1.04	143 (14%) <b>2</b> <b>2</b>	7, 14, 29, 48	0

All (143) RSRZ outliers are listed below:

Mol	Chain	Res	Type	RSRZ
1	A	603	LEU	16.0
1	A	602	THR	13.6
1	A	993	HIS	9.5
1	A	989	THR	7.4
1	A	703	SER	7.4
1	A	721	GLY	7.3
1	A	990	PRO	7.1
1	A	908	LEU	6.7
1	A	991	GLU	6.6
1	A	655	ASN	6.4
1	A	702	ASP	6.3
1	A	600	HIS	6.2
1	A	78	HIS	6.2
1	A	994	THR	6.0
1	A	682	ASN	6.0
1	A	538	ASP	5.9
1	A	992	GLU	5.4
1	A	638	ASP	5.4
1	A	701	GLN	5.3
1	A	720	HIS	5.3
1	A	30	GLN	5.1
1	A	583	LEU	5.0
1	A	537	GLU	4.8
1	A	601	ASP	4.7
1	A	1026	MET	4.6
1	A	700	THR	4.5
1	A	31	CYS	4.4

*Continued on next page...*



*Continued from previous page...*

<b>Mol</b>	<b>Chain</b>	<b>Res</b>	<b>Type</b>	<b>RSRZ</b>
1	A	139	HIS	4.3
1	A	77	ALA	4.3
1	A	534	SER	4.2
1	A	1024	ASP	4.1
1	A	539	SER	4.1
1	A	741	GLY	4.0
1	A	536	VAL	4.0
1	A	73	LEU	4.0
1	A	697	ILE	4.0
1	A	256	ASP	3.9
1	A	639	SER	3.9
1	A	1022	HIS	3.8
1	A	988	GLY	3.8
1	A	1003	LEU	3.8
1	A	144	ASN	3.7
1	A	605	LYS	3.7
1	A	738	VAL	3.6
1	A	451	MET	3.5
1	A	739	GLU	3.5
1	A	604	THR	3.4
1	A	521	PHE	3.4
1	A	820	ASP	3.4
1	A	683	GLY	3.3
1	A	688	PHE	3.3
1	A	592	VAL	3.2
1	A	535	GLY	3.1
1	A	520	SER	3.1
1	A	1009	CYS	3.0
1	A	764	VAL	3.0
1	A	1023	LEU	3.0
1	A	76	ASN	3.0
1	A	368	ALA	2.9
1	A	585	ASN	2.9
1	A	681	GLY	2.9
1	A	57	ILE	2.9
1	A	367	GLN	2.9
1	A	642	GLU	2.9
1	A	709	HIS	2.8
1	A	69	LYS	2.8
1	A	705	HIS	2.8
1	A	1045	SER	2.8
1	A	784	SER	2.7

*Continued on next page...*

*Continued from previous page...*

<b>Mol</b>	<b>Chain</b>	<b>Res</b>	<b>Type</b>	<b>RSRZ</b>
1	A	606	THR	2.7
1	A	949	ASP	2.7
1	A	453	ARG	2.7
1	A	584	ALA	2.7
1	A	304	ARG	2.7
1	A	618	ILE	2.7
1	A	938	GLU	2.7
1	A	38	VAL	2.7
1	A	396	GLU	2.7
1	A	326	ALA	2.6
1	A	191	GLN	2.6
1	A	975	VAL	2.6
1	A	71	ASP	2.6
1	A	393	GLY	2.6
1	A	491	GLN	2.6
1	A	547	GLU	2.5
1	A	81	LEU	2.5
1	A	512	PRO	2.5
1	A	686	LEU	2.5
1	A	728	LEU	2.5
1	A	719	SER	2.5
1	A	518	ASP	2.5
1	A	1025	GLY	2.5
1	A	347	ASN	2.5
1	A	578	VAL	2.5
1	A	943	GLN	2.5
1	A	391	ARG	2.5
1	A	599	HIS	2.5
1	A	72	PRO	2.4
1	A	515	TYR	2.4
1	A	556	VAL	2.4
1	A	634	LEU	2.4
1	A	907	LYS	2.4
1	A	737	PRO	2.4
1	A	58	ASP	2.4
1	A	1040	VAL	2.3
1	A	317	LEU	2.3
1	A	79	HIS	2.3
1	A	676	ILE	2.3
1	A	608	HIS	2.3
1	A	308	ASP	2.3
1	A	660	PRO	2.3

*Continued on next page...*

*Continued from previous page...*

Mol	Chain	Res	Type	RSRZ
1	A	659	LEU	2.3
1	A	914	LEU	2.3
1	A	107	THR	2.3
1	A	906	SER	2.3
1	A	140	ASP	2.3
1	A	1020	LEU	2.2
1	A	653	ARG	2.2
1	A	516	SER	2.2
1	A	1008	ARG	2.2
1	A	306	ILE	2.2
1	A	313	ALA	2.2
1	A	651	LEU	2.2
1	A	666	GLU	2.2
1	A	388	GLN	2.1
1	A	571	PHE	2.1
1	A	397	PHE	2.1
1	A	37	ASP	2.1
1	A	134	PHE	2.1
1	A	652	LEU	2.1
1	A	671	GLY	2.1
1	A	1030	GLU	2.1
1	A	525	THR	2.1
1	A	726	ALA	2.1
1	A	745	VAL	2.1
1	A	673	PRO	2.0
1	A	743	PRO	2.0
1	A	41	VAL	2.0
1	A	376	PHE	2.0
1	A	637	SER	2.0
1	A	35	VAL	2.0
1	A	386	VAL	2.0
1	A	901	ASN	2.0

## 6.2 Non-standard residues in protein, DNA, RNA chains [i](#)

There are no non-standard protein/DNA/RNA residues in this entry.

## 6.3 Carbohydrates [i](#)

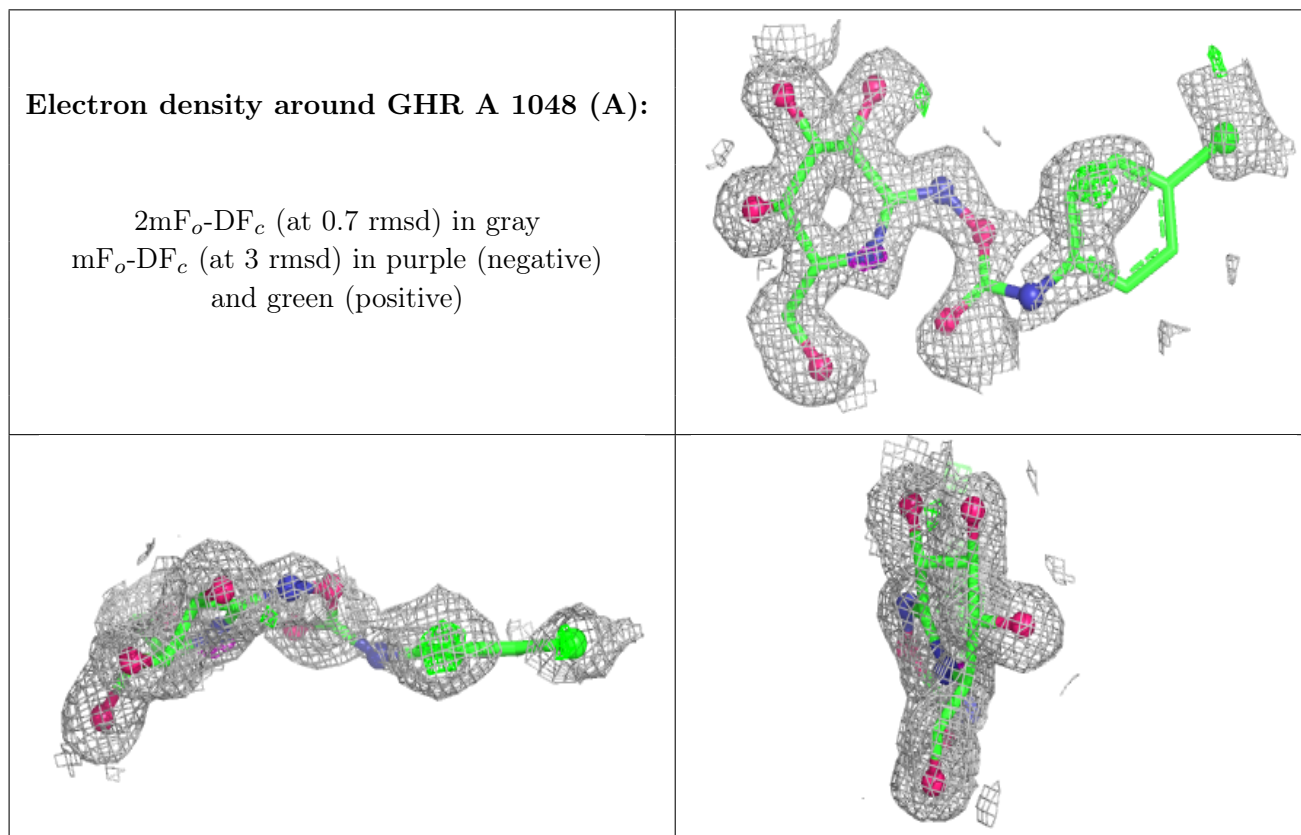
There are no monosaccharides in this entry.

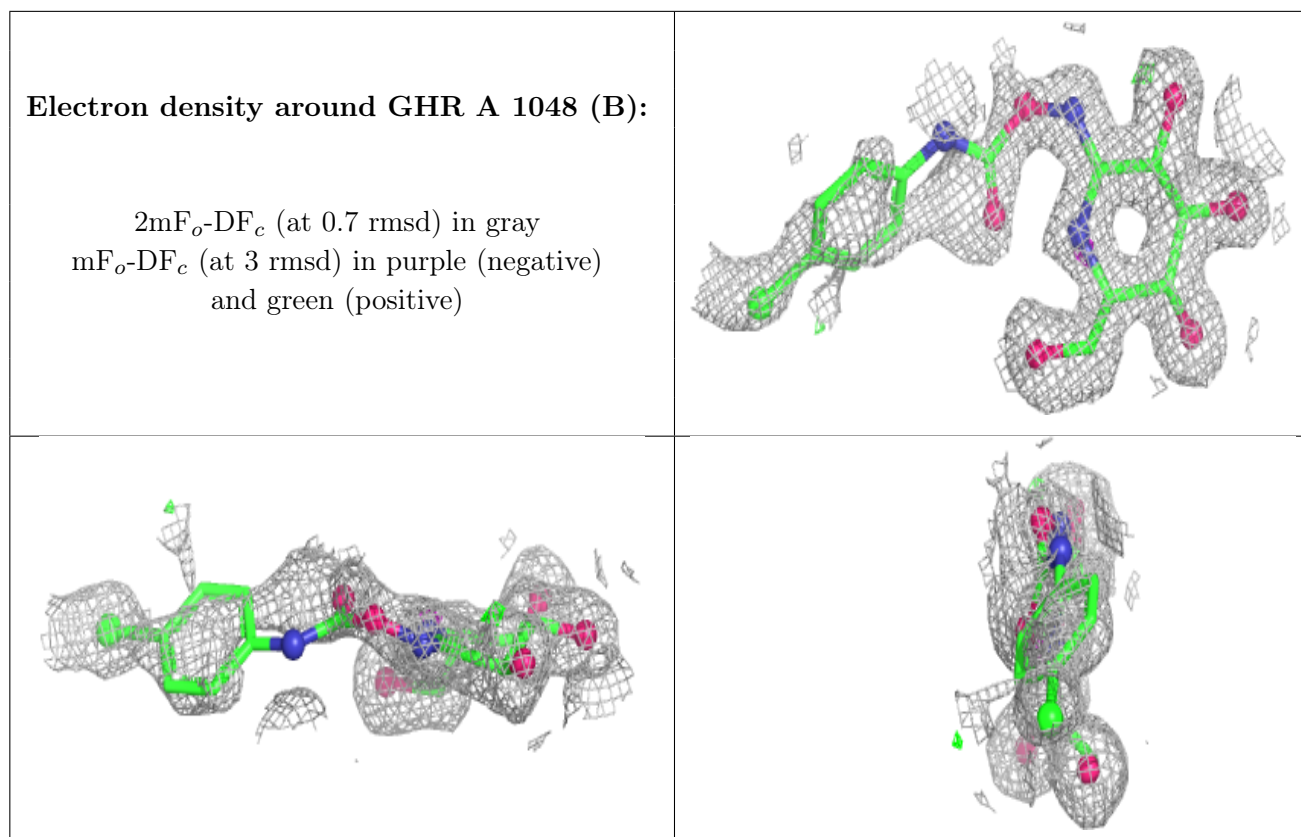
## 6.4 Ligands [i](#)

In the following table, the Atoms column lists the number of modelled atoms in the group and the number defined in the chemical component dictionary. The B-factors column lists the minimum, median, 95<sup>th</sup> percentile and maximum values of B factors of atoms in the group. The column labelled 'Q<0.9' lists the number of atoms with occupancy less than 0.9.

Mol	Type	Chain	Res	Atoms	RSCC	RSR	B-factors(Å <sup>2</sup> )	Q<0.9
3	MRD	A	1047	8/8	0.80	0.18	13,20,25,25	0
4	GHR	A	1048[A]	23/23	0.85	0.21	7,14,34,35	12
4	GHR	A	1048[B]	23/23	0.85	0.21	7,14,33,33	12
2	ZN	A	1046	1/1	1.00	0.05	9,9,9,9	0

The following is a graphical depiction of the model fit to experimental electron density of all instances of the Ligand of Interest. In addition, ligands with molecular weight > 250 and outliers as shown on the geometry validation Tables will also be included. Each fit is shown from different orientation to approximate a three-dimensional view.





## 6.5 Other polymers [i](#)

There are no such residues in this entry.