



# Full wwPDB X-ray Structure Validation Report ⓘ

May 16, 2020 – 08:27 pm BST

PDB ID : 5D57  
Title : In meso X-ray crystallography structure of diacylglycerol kinase, DgkA, at 100 K  
Authors : Huang, C.-Y.; Howe, N.; Olieric, V.; Wang, M.; Caffrey, M.  
Deposited on : 2015-08-10  
Resolution : 2.80 Å(reported)

This is a Full wwPDB X-ray Structure Validation Report for a publicly released PDB entry.

We welcome your comments at [validation@mail.wwpdb.org](mailto:validation@mail.wwpdb.org)

A user guide is available at

<https://www.wwpdb.org/validation/2017/XrayValidationReportHelp>

with specific help available everywhere you see the ⓘ symbol.

---

The following versions of software and data (see [references ⓘ](#)) were used in the production of this report:

MolProbity : 4.02b-467  
Mogul : 1.8.5 (274361), CSD as541be (2020)  
Xtriage (Phenix) : 1.13  
EDS : 2.11  
buster-report : 1.1.7 (2018)  
Percentile statistics : 20191225.v01 (using entries in the PDB archive December 25th 2019)  
Refmac : 5.8.0158  
CCP4 : 7.0.044 (Gargrove)  
Ideal geometry (proteins) : Engh & Huber (2001)  
Ideal geometry (DNA, RNA) : Parkinson et al. (1996)  
Validation Pipeline (wwPDB-VP) : 2.11

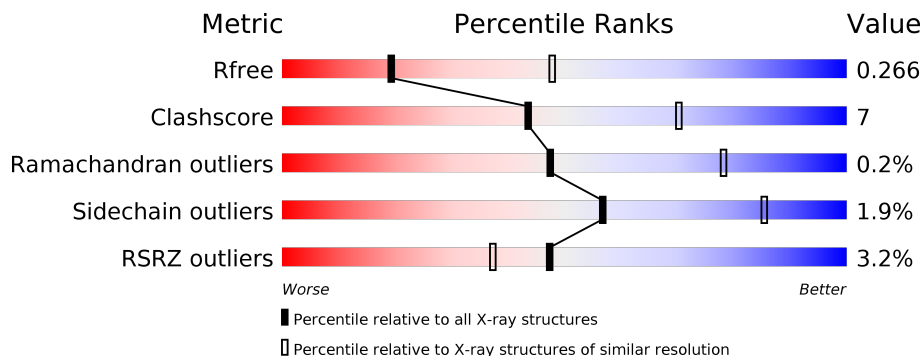
# 1 Overall quality at a glance

The following experimental techniques were used to determine the structure:

*X-RAY DIFFRACTION*

The reported resolution of this entry is 2.80 Å.

Percentile scores (ranging between 0-100) for global validation metrics of the entry are shown in the following graphic. The table shows the number of entries on which the scores are based.



Metric	Whole archive (#Entries)	Similar resolution (#Entries, resolution range(Å))
$R_{free}$	130704	3140 (2.80-2.80)
Clashscore	141614	3569 (2.80-2.80)
Ramachandran outliers	138981	3498 (2.80-2.80)
Sidechain outliers	138945	3500 (2.80-2.80)
RSRZ outliers	127900	3078 (2.80-2.80)

The table below summarises the geometric issues observed across the polymeric chains and their fit to the electron density. The red, orange, yellow and green segments on the lower bar indicate the fraction of residues that contain outliers for  $\geq 3$ , 2, 1 and 0 types of geometric quality criteria respectively. A grey segment represents the fraction of residues that are not modelled. The numeric value for each fraction is indicated below the corresponding segment, with a dot representing fractions  $\leq 5\%$ . The upper red bar (where present) indicates the fraction of residues that have poor fit to the electron density. The numeric value is given above the bar.

Mol	Chain	Length	Quality of chain
1	A	130	
1	B	130	
1	C	130	
1	D	130	
1	E	130	
1	F	130	

The following table lists non-polymeric compounds, carbohydrate monomers and non-standard residues in protein, DNA, RNA chains that are outliers for geometric or electron-density-fit criteria:

<b>Mol</b>	<b>Type</b>	<b>Chain</b>	<b>Res</b>	<b>Chirality</b>	<b>Geometry</b>	<b>Clashes</b>	<b>Electron density</b>
2	78M	A	203	-	-	-	X
2	78M	A	205	-	-	X	-
2	78M	B	202	-	-	-	X
2	78M	C	201	-	-	-	X

## 2 Entry composition

There are 3 unique types of molecules in this entry. The entry contains 4884 atoms, of which 0 are hydrogens and 0 are deuteriums.

In the tables below, the ZeroOcc column contains the number of atoms modelled with zero occupancy, the AltConf column contains the number of residues with at least one atom in alternate conformation and the Trace column contains the number of residues modelled with at most 2 atoms.

- Molecule 1 is a protein called Diacylglycerol kinase.

Mol	Chain	Residues	Atoms					ZeroOcc	AltConf	Trace
			Total	C	N	O	S			
1	A	116	886	580	149	154	3	0	0	0
1	B	99	756	494	123	136	3	0	1	0
1	C	92	696	455	114	124	3	0	0	0
1	D	108	823	538	137	145	3	0	0	0
1	E	89	669	437	108	121	3	0	0	0
1	F	88	660	432	106	119	3	0	0	0

There are 96 discrepancies between the modelled and reference sequences:

Chain	Residue	Modelled	Actual	Comment	Reference
A	-8	GLY	-	expression tag	UNP P0ABN1
A	-7	HIS	-	expression tag	UNP P0ABN1
A	-6	HIS	-	expression tag	UNP P0ABN1
A	-5	HIS	-	expression tag	UNP P0ABN1
A	-4	HIS	-	expression tag	UNP P0ABN1
A	-3	HIS	-	expression tag	UNP P0ABN1
A	-2	HIS	-	expression tag	UNP P0ABN1
A	-1	GLU	-	expression tag	UNP P0ABN1
A	0	LEU	-	expression tag	UNP P0ABN1
A	41	CYS	ALA	engineered mutation	UNP P0ABN1
A	46	ALA	CYS	engineered mutation	UNP P0ABN1
A	53	VAL	ILE	engineered mutation	UNP P0ABN1
A	70	LEU	ILE	engineered mutation	UNP P0ABN1
A	96	LEU	MET	engineered mutation	UNP P0ABN1
A	107	ASP	VAL	engineered mutation	UNP P0ABN1
A	113	ALA	CYS	engineered mutation	UNP P0ABN1
B	-8	GLY	-	expression tag	UNP P0ABN1

*Continued on next page...*

*Continued from previous page...*

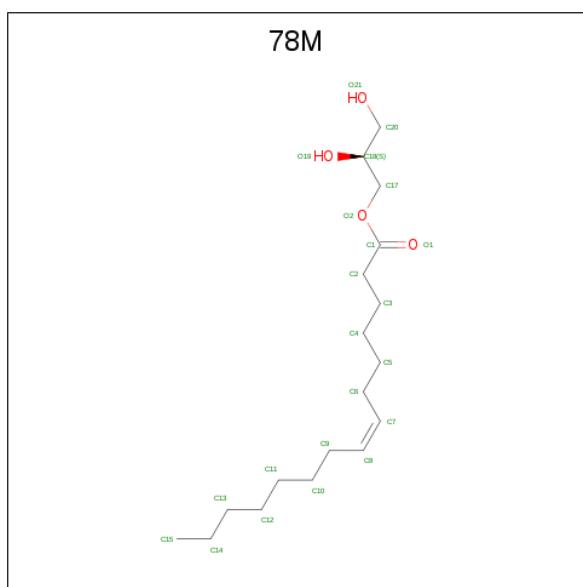
Chain	Residue	Modelled	Actual	Comment	Reference
B	-7	HIS	-	expression tag	UNP P0ABN1
B	-6	HIS	-	expression tag	UNP P0ABN1
B	-5	HIS	-	expression tag	UNP P0ABN1
B	-4	HIS	-	expression tag	UNP P0ABN1
B	-3	HIS	-	expression tag	UNP P0ABN1
B	-2	HIS	-	expression tag	UNP P0ABN1
B	-1	GLU	-	expression tag	UNP P0ABN1
B	0	LEU	-	expression tag	UNP P0ABN1
B	41	CYS	ALA	engineered mutation	UNP P0ABN1
B	46	ALA	CYS	engineered mutation	UNP P0ABN1
B	53	VAL	ILE	engineered mutation	UNP P0ABN1
B	70	LEU	ILE	engineered mutation	UNP P0ABN1
B	96	LEU	MET	engineered mutation	UNP P0ABN1
B	107	ASP	VAL	engineered mutation	UNP P0ABN1
B	113	ALA	CYS	engineered mutation	UNP P0ABN1
C	-8	GLY	-	expression tag	UNP P0ABN1
C	-7	HIS	-	expression tag	UNP P0ABN1
C	-6	HIS	-	expression tag	UNP P0ABN1
C	-5	HIS	-	expression tag	UNP P0ABN1
C	-4	HIS	-	expression tag	UNP P0ABN1
C	-3	HIS	-	expression tag	UNP P0ABN1
C	-2	HIS	-	expression tag	UNP P0ABN1
C	-1	GLU	-	expression tag	UNP P0ABN1
C	0	LEU	-	expression tag	UNP P0ABN1
C	41	CYS	ALA	engineered mutation	UNP P0ABN1
C	46	ALA	CYS	engineered mutation	UNP P0ABN1
C	53	VAL	ILE	engineered mutation	UNP P0ABN1
C	70	LEU	ILE	engineered mutation	UNP P0ABN1
C	96	LEU	MET	engineered mutation	UNP P0ABN1
C	107	ASP	VAL	engineered mutation	UNP P0ABN1
C	113	ALA	CYS	engineered mutation	UNP P0ABN1
D	-8	GLY	-	expression tag	UNP P0ABN1
D	-7	HIS	-	expression tag	UNP P0ABN1
D	-6	HIS	-	expression tag	UNP P0ABN1
D	-5	HIS	-	expression tag	UNP P0ABN1
D	-4	HIS	-	expression tag	UNP P0ABN1
D	-3	HIS	-	expression tag	UNP P0ABN1
D	-2	HIS	-	expression tag	UNP P0ABN1
D	-1	GLU	-	expression tag	UNP P0ABN1
D	0	LEU	-	expression tag	UNP P0ABN1
D	41	CYS	ALA	engineered mutation	UNP P0ABN1
D	46	ALA	CYS	engineered mutation	UNP P0ABN1

*Continued on next page...*

*Continued from previous page...*

Chain	Residue	Modelled	Actual	Comment	Reference
D	53	VAL	ILE	engineered mutation	UNP P0ABN1
D	70	LEU	ILE	engineered mutation	UNP P0ABN1
D	96	LEU	MET	engineered mutation	UNP P0ABN1
D	107	ASP	VAL	engineered mutation	UNP P0ABN1
D	113	ALA	CYS	engineered mutation	UNP P0ABN1
E	-8	GLY	-	expression tag	UNP P0ABN1
E	-7	HIS	-	expression tag	UNP P0ABN1
E	-6	HIS	-	expression tag	UNP P0ABN1
E	-5	HIS	-	expression tag	UNP P0ABN1
E	-4	HIS	-	expression tag	UNP P0ABN1
E	-3	HIS	-	expression tag	UNP P0ABN1
E	-2	HIS	-	expression tag	UNP P0ABN1
E	-1	GLU	-	expression tag	UNP P0ABN1
E	0	LEU	-	expression tag	UNP P0ABN1
E	41	CYS	ALA	engineered mutation	UNP P0ABN1
E	46	ALA	CYS	engineered mutation	UNP P0ABN1
E	53	VAL	ILE	engineered mutation	UNP P0ABN1
E	70	LEU	ILE	engineered mutation	UNP P0ABN1
E	96	LEU	MET	engineered mutation	UNP P0ABN1
E	107	ASP	VAL	engineered mutation	UNP P0ABN1
E	113	ALA	CYS	engineered mutation	UNP P0ABN1
F	-8	GLY	-	expression tag	UNP P0ABN1
F	-7	HIS	-	expression tag	UNP P0ABN1
F	-6	HIS	-	expression tag	UNP P0ABN1
F	-5	HIS	-	expression tag	UNP P0ABN1
F	-4	HIS	-	expression tag	UNP P0ABN1
F	-3	HIS	-	expression tag	UNP P0ABN1
F	-2	HIS	-	expression tag	UNP P0ABN1
F	-1	GLU	-	expression tag	UNP P0ABN1
F	0	LEU	-	expression tag	UNP P0ABN1
F	41	CYS	ALA	engineered mutation	UNP P0ABN1
F	46	ALA	CYS	engineered mutation	UNP P0ABN1
F	53	VAL	ILE	engineered mutation	UNP P0ABN1
F	70	LEU	ILE	engineered mutation	UNP P0ABN1
F	96	LEU	MET	engineered mutation	UNP P0ABN1
F	107	ASP	VAL	engineered mutation	UNP P0ABN1
F	113	ALA	CYS	engineered mutation	UNP P0ABN1

- Molecule 2 is (2S)-2,3-DIHYDROXYPROPYL(7Z)-PENTADEC-7-ENOATE (three-letter code: 78M) (formula: C<sub>18</sub>H<sub>34</sub>O<sub>4</sub>).



Mol	Chain	Residues	Atoms			ZeroOcc	AltConf
2	A	1	Total	C	O	0	0
			22	18	4		
2	A	1	Total	C	O	0	0
			22	18	4		
2	A	1	Total	C	O	0	0
			22	18	4		
2	A	1	Total	C	O	0	0
			22	18	4		
2	A	1	Total	C	O	0	0
			22	18	4		
2	A	1	Total	C	O	0	0
			22	18	4		
2	B	1	Total	C	O	0	0
			22	18	4		
2	B	1	Total	C	O	0	0
			22	18	4		
2	B	1	Total	C	O	0	0
			22	18	4		
2	B	1	Total	C	O	0	0
			22	18	4		
2	C	1	Total	C	O	0	0
			22	18	4		
2	C	1	Total	C	O	0	0
			22	18	4		
2	D	1	Total	C	O	0	0
			22	18	4		
2	D	1	Total	C	O	0	0
			22	18	4		

*Continued on next page...*

*Continued from previous page...*

Mol	Chain	Residues	Atoms			ZeroOcc	AltConf
2	D	1	Total	C	O	0	0
			22	18	4		
2	D	1	Total	C	O	0	0
			22	18	4		

- Molecule 3 is water.

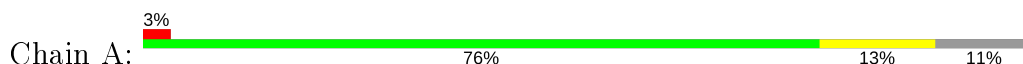
Mol	Chain	Residues	Atoms		ZeroOcc	AltConf
3	A	7	Total	O	0	0
			7	7		
3	B	7	Total	O	0	0
			7	7		
3	C	4	Total	O	0	0
			4	4		
3	D	5	Total	O	0	0
			5	5		
3	E	11	Total	O	0	0
			11	11		
3	F	8	Total	O	0	0
			8	8		



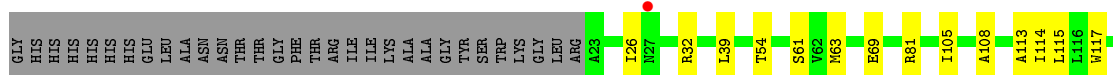
### 3 Residue-property plots [i](#)

These plots are drawn for all protein, RNA and DNA chains in the entry. The first graphic for a chain summarises the proportions of the various outlier classes displayed in the second graphic. The second graphic shows the sequence view annotated by issues in geometry and electron density. Residues are color-coded according to the number of geometric quality criteria for which they contain at least one outlier: green = 0, yellow = 1, orange = 2 and red = 3 or more. A red dot above a residue indicates a poor fit to the electron density ( $RSRZ > 2$ ). Stretches of 2 or more consecutive residues without any outlier are shown as a green connector. Residues present in the sample, but not in the model, are shown in grey.

- Molecule 1: Diacylglycerol kinase

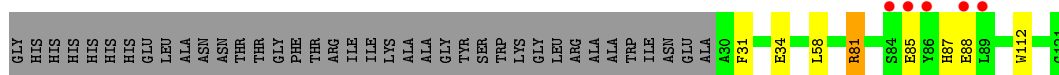


- Molecule 1: Diacylglycerol kinase

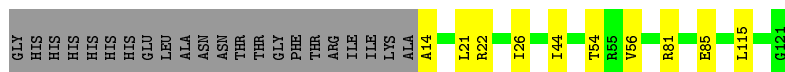


G121

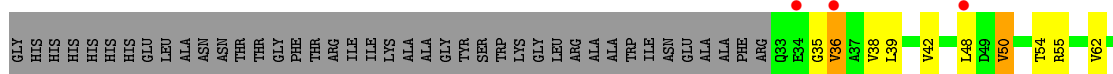
- Molecule 1: Diacylglycerol kinase



- Molecule 1: Diacylglycerol kinase

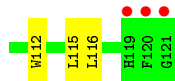
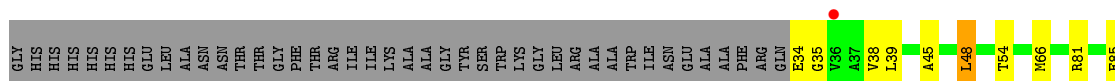


- Molecule 1: Diacylglycerol kinase





- Molecule 1: Diacylglycerol kinase



## 4 Data and refinement statistics

Property	Value	Source
Space group	P 21 21 21	Depositor
Cell constants a, b, c, $\alpha$ , $\beta$ , $\gamma$	75.32Å 91.34Å 143.36Å 90.00° 90.00° 90.00°	Depositor
Resolution (Å)	45.67 – 2.80 45.67 – 2.80	Depositor EDS
% Data completeness (in resolution range)	99.5 (45.67-2.80) 92.4 (45.67-2.80)	Depositor EDS
$R_{merge}$	(Not available)	Depositor
$R_{sym}$	(Not available)	Depositor
$\langle I/\sigma(I) \rangle$ <sup>1</sup>	1.52 (at 2.81Å)	Xtrriage
Refinement program	PHENIX 1.9_1692	Depositor
R, $R_{free}$	0.221 , 0.266 0.224 , 0.266	Depositor DCC
$R_{free}$ test set	1251 reflections (5.02%)	wwPDB-VP
Wilson B-factor (Å <sup>2</sup> )	48.5	Xtrriage
Anisotropy	0.232	Xtrriage
Bulk solvent $k_{sol}$ (e/Å <sup>3</sup> ), $B_{sol}$ (Å <sup>2</sup> )	0.30 , 60.9	EDS
L-test for twinning <sup>2</sup>	$\langle  L  \rangle = 0.49$ , $\langle L^2 \rangle = 0.32$	Xtrriage
Estimated twinning fraction	No twinning to report.	Xtrriage
$F_o, F_c$ correlation	0.92	EDS
Total number of atoms	4884	wwPDB-VP
Average B, all atoms (Å <sup>2</sup> )	58.0	wwPDB-VP

Xtrriage's analysis on translational NCS is as follows: *The largest off-origin peak in the Patterson function is 8.27% of the height of the origin peak. No significant pseudotranslation is detected.*

<sup>1</sup>Intensities estimated from amplitudes.

<sup>2</sup>Theoretical values of  $\langle |L| \rangle$ ,  $\langle L^2 \rangle$  for acentric reflections are 0.5, 0.333 respectively for untwinned datasets, and 0.375, 0.2 for perfectly twinned datasets.

## 5 Model quality [i](#)

### 5.1 Standard geometry [i](#)

Bond lengths and bond angles in the following residue types are not validated in this section: 78M

The Z score for a bond length (or angle) is the number of standard deviations the observed value is removed from the expected value. A bond length (or angle) with  $|Z| > 5$  is considered an outlier worth inspection. RMSZ is the root-mean-square of all Z scores of the bond lengths (or angles).

Mol	Chain	Bond lengths		Bond angles	
		RMSZ	# Z  >5	RMSZ	# Z  >5
1	A	0.25	0/902	0.41	0/1229
1	B	0.23	0/771	0.36	0/1054
1	C	0.24	0/706	0.36	0/964
1	D	0.23	0/838	0.36	0/1144
1	E	0.25	0/678	0.46	0/927
1	F	0.22	0/669	0.39	0/915
All	All	0.24	0/4564	0.39	0/6233

There are no bond length outliers.

There are no bond angle outliers.

There are no chirality outliers.

There are no planarity outliers.

### 5.2 Too-close contacts [i](#)

In the following table, the Non-H and H(model) columns list the number of non-hydrogen atoms and hydrogen atoms in the chain respectively. The H(added) column lists the number of hydrogen atoms added and optimized by MolProbity. The Clashes column lists the number of clashes within the asymmetric unit, whereas Symm-Clashes lists symmetry related clashes.

Mol	Chain	Non-H	H(model)	H(added)	Clashes	Symm-Clashes
1	A	886	0	922	18	0
1	B	756	0	784	12	0
1	C	696	0	730	7	0
1	D	823	0	850	8	0
1	E	669	0	703	11	0
1	F	660	0	695	7	0
2	A	132	0	204	19	0

*Continued on next page...*

*Continued from previous page...*

Mol	Chain	Non-H	H(model)	H(added)	Clashes	Symm-Clashes
2	B	88	0	136	5	0
2	C	44	0	68	0	0
2	D	88	0	136	5	0
3	A	7	0	0	0	0
3	B	7	0	0	0	0
3	C	4	0	0	0	0
3	D	5	0	0	1	0
3	E	11	0	0	0	0
3	F	8	0	0	0	0
All	All	4884	0	5228	67	0

The all-atom clashscore is defined as the number of clashes found per 1000 atoms (including hydrogen atoms). The all-atom clashscore for this structure is 7.

All (67) close contacts within the same asymmetric unit are listed below, sorted by their clash magnitude.

Atom-1	Atom-2	Interatomic distance (Å)	Clash overlap (Å)
1:E:39:LEU:HD22	1:E:62:VAL:HG12	1.65	0.79
2:A:205:78M:H201	2:B:201:78M:H18	1.69	0.74
1:B:81:ARG:NH2	1:C:85:GLU:OE2	2.23	0.72
1:A:55:ARG:NH2	2:A:205:78M:O19	2.27	0.68
1:B:26:ILE:HD11	2:D:203:78M:H7	1.77	0.66
1:A:89:LEU:HD22	1:C:81:ARG:HG2	1.78	0.64
1:F:81:ARG:NH1	1:F:85:GLU:HB2	2.13	0.64
1:D:85:GLU:N	1:D:85:GLU:OE2	2.28	0.63
1:E:54:THR:HG23	1:E:115:LEU:HD13	1.81	0.61
1:A:92:ARG:NH1	2:A:203:78M:H202	2.17	0.60
2:A:204:78M:H122	2:A:205:78M:H132	1.86	0.58
2:A:201:78M:H172	2:A:205:78M:H18	1.84	0.58
1:D:14:ALA:N	3:D:302:HOH:O	2.37	0.57
1:E:38:VAL:O	1:E:42:VAL:HG23	2.03	0.57
1:B:32:ARG:NH1	2:D:203:78M:H22C	2.22	0.55
2:A:204:78M:H112	2:A:205:78M:H153	1.89	0.55
2:A:205:78M:H122	2:A:206:78M:H141	1.88	0.54
1:A:95:ASP:OD2	2:A:203:78M:H18	2.06	0.54
1:F:54:THR:HG23	1:F:115:LEU:HD13	1.91	0.53
2:A:201:78M:H7	2:A:205:78M:H32C	1.90	0.52
1:A:45:ALA:HA	1:A:48:LEU:HD12	1.92	0.52
1:D:21:LEU:HD22	2:D:202:78M:H7	1.91	0.52
1:E:36:VAL:HG13	1:E:66:MET:HE3	1.93	0.51
1:B:117:TRP:CD1	2:B:201:78M:H171	2.47	0.50

*Continued on next page...*

*Continued from previous page...*

Atom-1	Atom-2	Interatomic distance (Å)	Clash overlap (Å)
1:A:55:ARG:HG2	1:B:114:ILE:HD13	1.94	0.50
1:A:42:VAL:HG21	2:A:204:78M:H152	1.93	0.49
1:F:81:ARG:HH12	1:F:85:GLU:HB2	1.76	0.49
1:A:40:LEU:O	1:A:44:ILE:HD12	2.12	0.49
1:E:88:GLU:OE1	1:E:88:GLU:N	2.34	0.49
1:C:31:PHE:HA	1:C:34:GLU:HB2	1.94	0.49
1:F:45:ALA:HA	1:F:48:LEU:HD12	1.94	0.48
1:B:61:SER:HB2	1:B:108:ALA:HA	1.94	0.48
1:D:22:ARG:O	1:D:26:ILE:HG12	2.13	0.48
1:F:35:GLY:O	1:F:39:LEU:N	2.37	0.47
1:B:113:ALA:O	1:B:117:TRP:HB2	2.15	0.47
1:A:13:ALA:HB1	2:A:206:78M:H171	1.96	0.47
2:A:202:78M:H91C	2:A:202:78M:H62C	1.69	0.47
1:A:13:ALA:HB1	2:A:206:78M:H202	1.96	0.47
1:E:36:VAL:HA	1:E:66:MET:HE1	1.96	0.46
1:A:42:VAL:HG11	2:A:204:78M:C15	2.46	0.45
1:A:84:SER:O	1:A:87:HIS:HB3	2.16	0.45
1:E:50:VAL:HG23	1:E:55:ARG:HG3	1.97	0.45
2:B:203:78M:H92C	2:B:203:78M:H61C	1.77	0.45
1:E:114:ILE:HA	1:E:117:TRP:HE3	1.82	0.44
1:A:44:ILE:HD13	2:A:202:78M:H61C	1.98	0.44
1:C:58:LEU:HD22	1:C:112:TRP:CD2	2.53	0.44
1:A:6:GLY:N	1:A:9:ARG:HD3	2.33	0.44
1:B:63:MET:HE3	2:D:203:78M:H131	2.00	0.44
1:A:42:VAL:HG11	2:A:204:78M:H151	2.00	0.43
1:B:39:LEU:HD11	1:D:44:ILE:HD13	2.00	0.43
1:B:105:ILE:HD11	2:B:202:78M:H172	2.00	0.43
2:D:204:78M:H62C	2:D:204:78M:H92C	1.81	0.43
1:A:86:TYR:HD1	1:C:81:ARG:HD3	1.84	0.43
2:A:204:78M:H141	2:A:205:78M:H121	2.00	0.42
1:B:54:THR:HG23	1:B:115:LEU:HD13	2.02	0.42
1:B:69[A]:GLU:OE2	2:B:202:78M:H171	2.19	0.42
1:E:35:GLY:O	1:E:39:LEU:HB2	2.19	0.42
1:A:25:TRP:CD2	1:A:32:ARG:HG2	2.54	0.42
1:F:112:TRP:O	1:F:116:LEU:HB2	2.19	0.42
2:A:204:78M:H42C	2:A:204:78M:H7	1.87	0.41
1:C:87:HIS:CD2	1:C:88:GLU:H	2.37	0.41
1:A:89:LEU:HB2	1:C:81:ARG:HG3	2.03	0.41
1:D:21:LEU:HD11	1:E:103:ILE:HD11	2.03	0.41
1:F:34:GLU:HG3	1:F:35:GLY:H	1.84	0.41
2:A:204:78M:H153	2:A:205:78M:H112	2.03	0.41

*Continued on next page...*

Continued from previous page...

Atom-1	Atom-2	Interatomic distance (Å)	Clash overlap (Å)
1:D:56:VAL:HG11	1:E:111:THR:HG23	2.03	0.40
1:D:54:THR:HG23	1:D:115:LEU:HD13	2.03	0.40

There are no symmetry-related clashes.

## 5.3 Torsion angles [i](#)

### 5.3.1 Protein backbone [i](#)

In the following table, the Percentiles column shows the percent Ramachandran outliers of the chain as a percentile score with respect to all X-ray entries followed by that with respect to entries of similar resolution.

The Analysed column shows the number of residues for which the backbone conformation was analysed, and the total number of residues.

Mol	Chain	Analysed	Favoured	Allowed	Outliers	Percentiles	
1	A	114/130 (88%)	112 (98%)	2 (2%)	0	100	100
1	B	98/130 (75%)	97 (99%)	1 (1%)	0	100	100
1	C	90/130 (69%)	90 (100%)	0	0	100	100
1	D	106/130 (82%)	106 (100%)	0	0	100	100
1	E	87/130 (67%)	83 (95%)	3 (3%)	1 (1%)	14	41
1	F	86/130 (66%)	85 (99%)	1 (1%)	0	100	100
All	All	581/780 (74%)	573 (99%)	7 (1%)	1 (0%)	47	78

All (1) Ramachandran outliers are listed below:

Mol	Chain	Res	Type
1	E	50	VAL

### 5.3.2 Protein sidechains [i](#)

In the following table, the Percentiles column shows the percent sidechain outliers of the chain as a percentile score with respect to all X-ray entries followed by that with respect to entries of similar resolution.

The Analysed column shows the number of residues for which the sidechain conformation was analysed, and the total number of residues.

Mol	Chain	Analysed	Rotameric	Outliers	Percentiles	
1	A	90/102 (88%)	90 (100%)	0	100	100
1	B	79/102 (78%)	79 (100%)	0	100	100
1	C	74/102 (72%)	73 (99%)	1 (1%)	67	90
1	D	84/102 (82%)	83 (99%)	1 (1%)	71	92
1	E	72/102 (71%)	68 (94%)	4 (6%)	21	51
1	F	71/102 (70%)	68 (96%)	3 (4%)	30	63
All	All	470/612 (77%)	461 (98%)	9 (2%)	57	85

All (9) residues with a non-rotameric sidechain are listed below:

Mol	Chain	Res	Type
1	C	81	ARG
1	D	81	ARG
1	E	36	VAL
1	E	48	LEU
1	E	117	TRP
1	E	119	HIS
1	F	38	VAL
1	F	48	LEU
1	F	66	MET

Some sidechains can be flipped to improve hydrogen bonding and reduce clashes. All (1) such sidechains are listed below:

Mol	Chain	Res	Type
1	D	87	HIS

### 5.3.3 RNA [i](#)

There are no RNA molecules in this entry.

## 5.4 Non-standard residues in protein, DNA, RNA chains [i](#)

There are no non-standard protein/DNA/RNA residues in this entry.

## 5.5 Carbohydrates [i](#)

There are no carbohydrates in this entry.



## 5.6 Ligand geometry

16 ligands are modelled in this entry.

In the following table, the Counts columns list the number of bonds (or angles) for which Mogul statistics could be retrieved, the number of bonds (or angles) that are observed in the model and the number of bonds (or angles) that are defined in the Chemical Component Dictionary. The Link column lists molecule types, if any, to which the group is linked. The Z score for a bond length (or angle) is the number of standard deviations the observed value is removed from the expected value. A bond length (or angle) with  $|Z| > 2$  is considered an outlier worth inspection. RMSZ is the root-mean-square of all Z scores of the bond lengths (or angles).

Mol	Type	Chain	Res	Link	Bond lengths			Bond angles		
					Counts	RMSZ	# Z  > 2	Counts	RMSZ	# Z  > 2
2	78M	A	201	-	21,21,21	0.89	1 (4%)	22,22,22	0.77	1 (4%)
2	78M	B	203	-	21,21,21	1.02	1 (4%)	22,22,22	0.79	1 (4%)
2	78M	A	205	-	21,21,21	0.94	1 (4%)	22,22,22	0.84	1 (4%)
2	78M	D	203	-	21,21,21	0.87	1 (4%)	22,22,22	0.80	1 (4%)
2	78M	D	201	-	21,21,21	0.89	1 (4%)	22,22,22	0.81	1 (4%)
2	78M	D	204	-	21,21,21	0.85	1 (4%)	22,22,22	0.85	1 (4%)
2	78M	B	204	-	21,21,21	0.91	1 (4%)	22,22,22	0.82	1 (4%)
2	78M	A	203	-	21,21,21	0.93	1 (4%)	22,22,22	0.80	1 (4%)
2	78M	B	201	-	21,21,21	0.91	1 (4%)	22,22,22	0.70	1 (4%)
2	78M	B	202	-	21,21,21	0.87	1 (4%)	22,22,22	0.74	1 (4%)
2	78M	A	202	-	21,21,21	0.90	1 (4%)	22,22,22	0.79	1 (4%)
2	78M	D	202	-	21,21,21	1.01	1 (4%)	22,22,22	0.88	1 (4%)
2	78M	C	202	-	21,21,21	0.89	1 (4%)	22,22,22	0.79	1 (4%)
2	78M	A	206	-	21,21,21	0.85	1 (4%)	22,22,22	0.81	1 (4%)
2	78M	C	201	-	21,21,21	0.89	1 (4%)	22,22,22	0.85	1 (4%)
2	78M	A	204	-	21,21,21	0.89	1 (4%)	22,22,22	0.84	1 (4%)

In the following table, the Chirals column lists the number of chiral outliers, the number of chiral centers analysed, the number of these observed in the model and the number defined in the Chemical Component Dictionary. Similar counts are reported in the Torsion and Rings columns. '-' means no outliers of that kind were identified.

Mol	Type	Chain	Res	Link	Chirals	Torsions	Rings
2	78M	A	201	-	-	13/21/21/21	-
2	78M	B	203	-	-	10/21/21/21	-
2	78M	A	205	-	-	10/21/21/21	-
2	78M	D	203	-	-	8/21/21/21	-

*Continued on next page...*

*Continued from previous page...*

Mol	Type	Chain	Res	Link	Chirals	Torsions	Rings
2	78M	D	201	-	-	8/21/21/21	-
2	78M	D	204	-	-	8/21/21/21	-
2	78M	B	204	-	-	11/21/21/21	-
2	78M	A	203	-	-	12/21/21/21	-
2	78M	B	201	-	-	10/21/21/21	-
2	78M	B	202	-	-	10/21/21/21	-
2	78M	A	202	-	-	11/21/21/21	-
2	78M	D	202	-	-	12/21/21/21	-
2	78M	C	202	-	-	11/21/21/21	-
2	78M	A	206	-	-	9/21/21/21	-
2	78M	C	201	-	-	11/21/21/21	-
2	78M	A	204	-	-	8/21/21/21	-

All (16) bond length outliers are listed below:

Mol	Chain	Res	Type	Atoms	Z	Observed(Å)	Ideal(Å)
2	D	202	78M	O2-C1	3.12	1.42	1.33
2	B	203	78M	O2-C1	3.10	1.42	1.33
2	A	205	78M	O2-C1	3.00	1.42	1.33
2	A	203	78M	O2-C1	2.96	1.42	1.33
2	A	202	78M	O2-C1	2.91	1.41	1.33
2	B	201	78M	O2-C1	2.87	1.41	1.33
2	B	204	78M	O2-C1	2.86	1.41	1.33
2	C	202	78M	O2-C1	2.84	1.41	1.33
2	B	202	78M	O2-C1	2.79	1.41	1.33
2	D	201	78M	O2-C1	2.78	1.41	1.33
2	A	204	78M	O2-C1	2.78	1.41	1.33
2	A	201	78M	O2-C1	2.76	1.41	1.33
2	A	206	78M	O2-C1	2.75	1.41	1.33
2	C	201	78M	O2-C1	2.75	1.41	1.33
2	D	203	78M	O2-C1	2.64	1.41	1.33
2	D	204	78M	O2-C1	2.57	1.40	1.33

All (16) bond angle outliers are listed below:

Mol	Chain	Res	Type	Atoms	Z	Observed(°)	Ideal(°)
2	D	202	78M	O2-C1-C2	3.27	122.18	111.91
2	A	205	78M	O2-C1-C2	2.96	121.19	111.91
2	D	204	78M	O2-C1-C2	2.88	120.96	111.91

*Continued on next page...*

*Continued from previous page...*

Mol	Chain	Res	Type	Atoms	Z	Observed(°)	Ideal(°)
2	C	201	78M	O2-C1-C2	2.86	120.89	111.91
2	A	204	78M	O2-C1-C2	2.86	120.87	111.91
2	B	204	78M	O2-C1-C2	2.84	120.83	111.91
2	D	201	78M	O2-C1-C2	2.71	120.42	111.91
2	A	203	78M	O2-C1-C2	2.66	120.26	111.91
2	B	203	78M	O2-C1-C2	2.65	120.24	111.91
2	A	206	78M	O2-C1-C2	2.65	120.23	111.91
2	C	202	78M	O2-C1-C2	2.63	120.16	111.91
2	D	203	78M	O2-C1-C2	2.63	120.16	111.91
2	A	202	78M	O2-C1-C2	2.62	120.13	111.91
2	A	201	78M	O2-C1-C2	2.58	119.99	111.91
2	B	201	78M	O2-C1-C2	2.47	119.66	111.91
2	B	202	78M	O2-C1-C2	2.46	119.62	111.91

There are no chirality outliers.

All (162) torsion outliers are listed below:

Mol	Chain	Res	Type	Atoms
2	B	203	78M	O2-C17-C18-O19
2	A	205	78M	C17-C18-C20-O21
2	D	203	78M	C17-C18-C20-O21
2	D	201	78M	C2-C1-O2-C17
2	A	203	78M	C17-C18-C20-O21
2	A	203	78M	O2-C17-C18-O19
2	B	201	78M	C17-C18-C20-O21
2	B	202	78M	O19-C18-C20-O21
2	B	202	78M	C17-C18-C20-O21
2	B	202	78M	O2-C17-C18-O19
2	A	202	78M	O2-C17-C18-C20
2	D	202	78M	C17-C18-C20-O21
2	D	202	78M	O2-C17-C18-C20
2	D	202	78M	O2-C17-C18-O19
2	C	202	78M	C17-C18-C20-O21
2	C	202	78M	O2-C17-C18-O19
2	D	201	78M	O1-C1-O2-C17
2	B	203	78M	C2-C1-O2-C17
2	B	202	78M	C2-C1-O2-C17
2	B	203	78M	O1-C1-O2-C17
2	A	204	78M	O2-C17-C18-O19
2	B	203	78M	C4-C5-C6-C7
2	B	202	78M	O1-C1-O2-C17
2	B	204	78M	O1-C1-O2-C17

*Continued on next page...*

*Continued from previous page...*

Mol	Chain	Res	Type	Atoms
2	B	204	78M	C2-C1-O2-C17
2	A	202	78M	C2-C1-O2-C17
2	C	202	78M	C2-C1-O2-C17
2	A	206	78M	C2-C1-O2-C17
2	D	203	78M	O2-C17-C18-C20
2	B	204	78M	O2-C17-C18-C20
2	A	201	78M	O2-C17-C18-O19
2	D	203	78M	O2-C17-C18-O19
2	B	204	78M	O2-C17-C18-O19
2	A	202	78M	O2-C17-C18-O19
2	A	206	78M	O1-C1-O2-C17
2	A	205	78M	C2-C1-O2-C17
2	D	203	78M	C2-C1-O2-C17
2	D	202	78M	O19-C18-C20-O21
2	C	202	78M	O1-C1-O2-C17
2	A	201	78M	C1-C2-C3-C4
2	D	202	78M	C1-C2-C3-C4
2	D	201	78M	C1-C2-C3-C4
2	A	203	78M	C1-C2-C3-C4
2	C	201	78M	C1-C2-C3-C4
2	A	202	78M	O1-C1-O2-C17
2	A	201	78M	C11-C10-C9-C8
2	C	201	78M	O2-C17-C18-O19
2	A	205	78M	O1-C1-O2-C17
2	B	201	78M	C2-C1-O2-C17
2	A	204	78M	C11-C10-C9-C8
2	B	203	78M	C10-C11-C12-C13
2	C	201	78M	C10-C11-C12-C13
2	D	204	78M	C2-C1-O2-C17
2	A	201	78M	O2-C17-C18-C20
2	A	203	78M	O2-C17-C18-C20
2	B	202	78M	O2-C17-C18-C20
2	C	202	78M	O2-C17-C18-C20
2	C	201	78M	O2-C17-C18-C20
2	A	203	78M	C9-C10-C11-C12
2	A	204	78M	C2-C3-C4-C5
2	A	206	78M	C10-C11-C12-C13
2	B	201	78M	C1-C2-C3-C4
2	D	201	78M	C10-C11-C12-C13
2	D	203	78M	O1-C1-O2-C17
2	A	201	78M	C17-C18-C20-O21
2	A	202	78M	C17-C18-C20-O21

*Continued on next page...*

*Continued from previous page...*

Mol	Chain	Res	Type	Atoms
2	A	201	78M	C3-C4-C5-C6
2	A	205	78M	C9-C10-C11-C12
2	A	206	78M	C3-C4-C5-C6
2	B	202	78M	C4-C5-C6-C7
2	A	201	78M	C9-C10-C11-C12
2	B	201	78M	O1-C1-O2-C17
2	B	201	78M	C3-C4-C5-C6
2	A	205	78M	O19-C18-C20-O21
2	D	203	78M	O19-C18-C20-O21
2	A	203	78M	O19-C18-C20-O21
2	B	201	78M	O19-C18-C20-O21
2	A	203	78M	C3-C4-C5-C6
2	D	201	78M	C4-C5-C6-C7
2	A	206	78M	C11-C10-C9-C8
2	D	202	78M	C2-C3-C4-C5
2	D	204	78M	O1-C1-O2-C17
2	A	204	78M	C12-C13-C14-C15
2	A	205	78M	C11-C10-C9-C8
2	D	202	78M	C11-C10-C9-C8
2	A	206	78M	C4-C5-C6-C7
2	B	204	78M	C10-C11-C12-C13
2	D	204	78M	C2-C3-C4-C5
2	A	202	78M	C4-C5-C6-C7
2	D	202	78M	C10-C11-C12-C13
2	B	203	78M	C2-C3-C4-C5
2	A	202	78M	C3-C4-C5-C6
2	B	204	78M	C11-C10-C9-C8
2	B	203	78M	C11-C12-C13-C14
2	D	203	78M	C2-C3-C4-C5
2	D	201	78M	C12-C13-C14-C15
2	A	206	78M	C12-C13-C14-C15
2	A	202	78M	O19-C18-C20-O21
2	A	201	78M	C4-C5-C6-C7
2	B	201	78M	C4-C5-C6-C7
2	C	202	78M	C11-C10-C9-C8
2	C	201	78M	C9-C10-C11-C12
2	A	205	78M	O2-C17-C18-C20
2	B	201	78M	C10-C11-C12-C13
2	D	204	78M	C12-C13-C14-C15
2	A	202	78M	C12-C13-C14-C15
2	A	201	78M	C5-C6-C7-C8
2	A	203	78M	C2-C3-C4-C5

*Continued on next page...*

*Continued from previous page...*

Mol	Chain	Res	Type	Atoms
2	D	202	78M	C12-C13-C14-C15
2	A	205	78M	C1-C2-C3-C4
2	B	204	78M	C3-C4-C5-C6
2	A	203	78M	C2-C1-O2-C17
2	B	203	78M	O2-C17-C18-C20
2	A	205	78M	O2-C17-C18-O19
2	A	203	78M	C10-C11-C12-C13
2	C	202	78M	O19-C18-C20-O21
2	D	204	78M	C11-C10-C9-C8
2	C	201	78M	C11-C12-C13-C14
2	C	201	78M	C3-C4-C5-C6
2	C	202	78M	C3-C4-C5-C6
2	A	203	78M	O1-C1-O2-C17
2	B	203	78M	O19-C18-C20-O21
2	A	203	78M	C11-C10-C9-C8
2	D	202	78M	C9-C10-C11-C12
2	B	203	78M	C17-C18-C20-O21
2	B	201	78M	C2-C3-C4-C5
2	D	204	78M	O19-C18-C20-O21
2	B	204	78M	O19-C18-C20-O21
2	A	202	78M	C9-C10-C11-C12
2	D	201	78M	C3-C4-C5-C6
2	A	206	78M	C11-C12-C13-C14
2	A	202	78M	C1-C2-C3-C4
2	C	201	78M	C2-C3-C4-C5
2	D	202	78M	C4-C5-C6-C7
2	B	202	78M	C10-C11-C12-C13
2	A	204	78M	C2-C1-O2-C17
2	A	204	78M	O2-C17-C18-C20
2	A	204	78M	O1-C1-O2-C17
2	D	201	78M	C9-C10-C11-C12
2	D	203	78M	C7-C8-C9-C10
2	D	204	78M	C10-C11-C12-C13
2	B	202	78M	C1-C2-C3-C4
2	B	202	78M	C7-C8-C9-C10
2	A	201	78M	O19-C18-C20-O21
2	B	204	78M	C7-C8-C9-C10
2	C	201	78M	C5-C6-C7-C8
2	C	202	78M	C5-C6-C7-C8
2	A	201	78M	O2-C1-C2-C3
2	C	201	78M	C7-C8-C9-C10
2	A	204	78M	C5-C6-C7-C8

*Continued on next page...*

*Continued from previous page...*

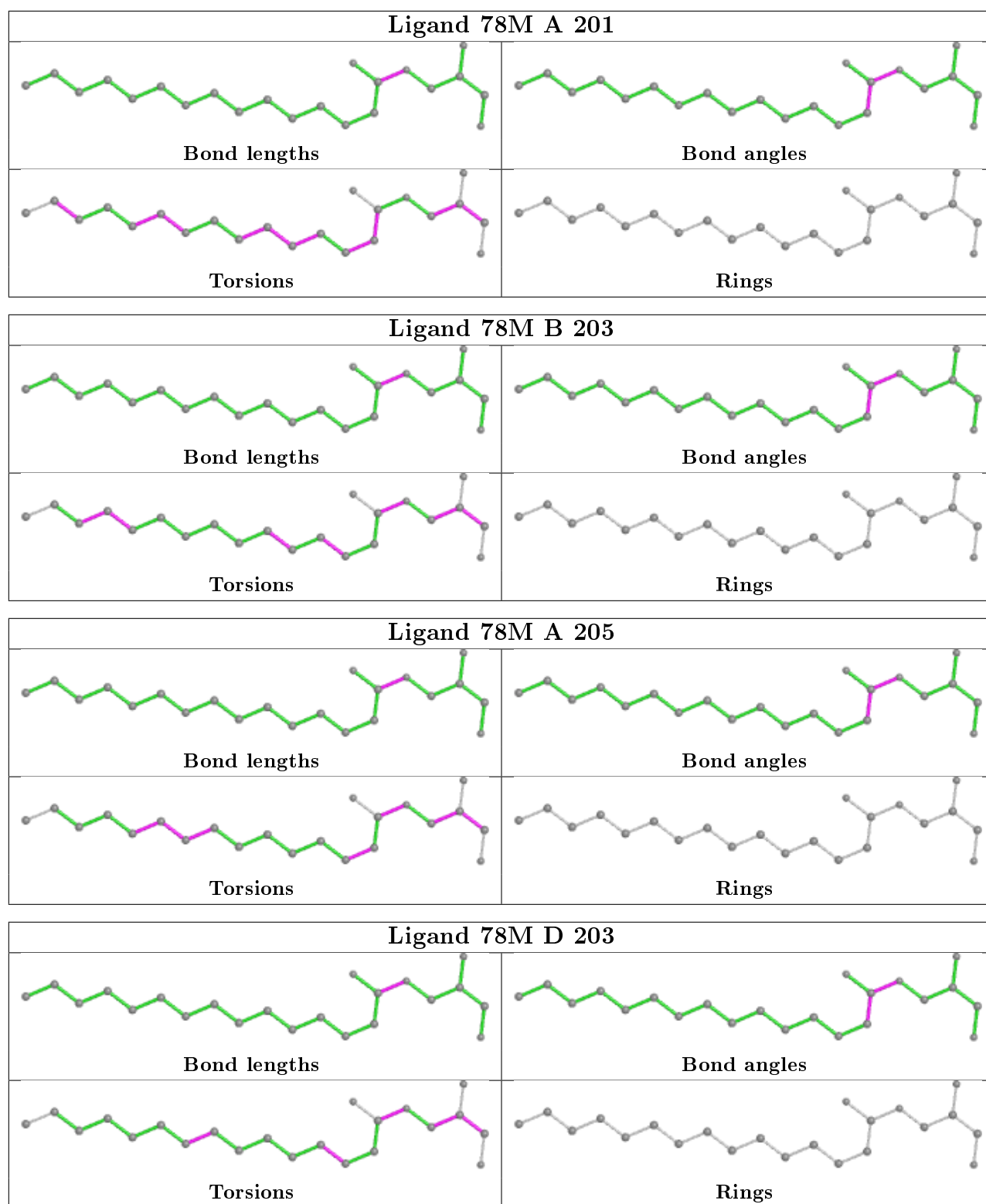
Mol	Chain	Res	Type	Atoms
2	A	201	78M	C12-C13-C14-C15
2	A	205	78M	C7-C8-C9-C10
2	C	202	78M	C12-C13-C14-C15
2	C	201	78M	C12-C13-C14-C15
2	D	202	78M	C7-C8-C9-C10
2	B	204	78M	C5-C6-C7-C8
2	D	204	78M	C17-C18-C20-O21
2	B	204	78M	C2-C3-C4-C5
2	A	206	78M	C7-C8-C9-C10
2	B	201	78M	C5-C6-C7-C8
2	A	201	78M	O1-C1-C2-C3
2	C	202	78M	C7-C8-C9-C10

There are no ring outliers.

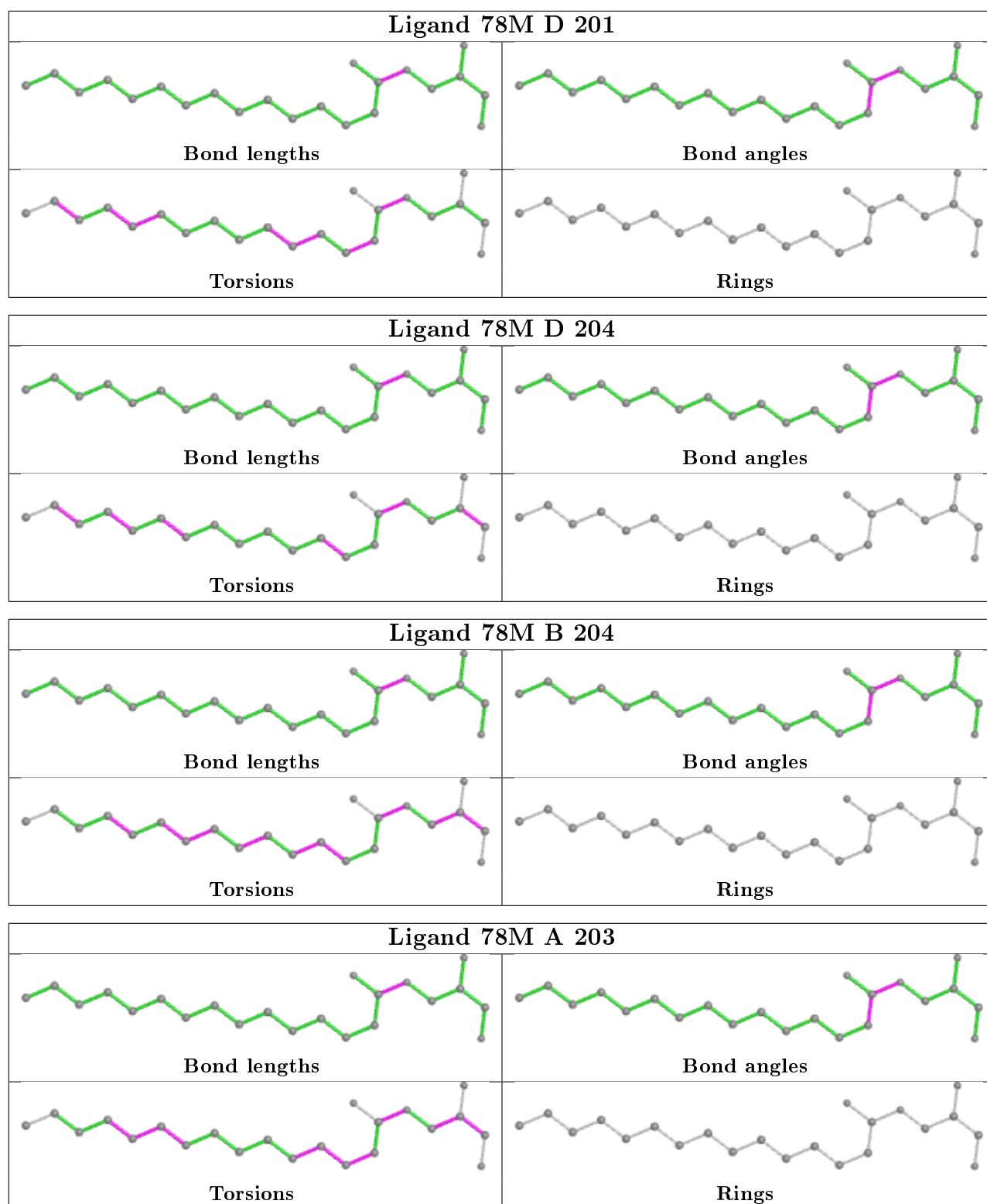
12 monomers are involved in 28 short contacts:

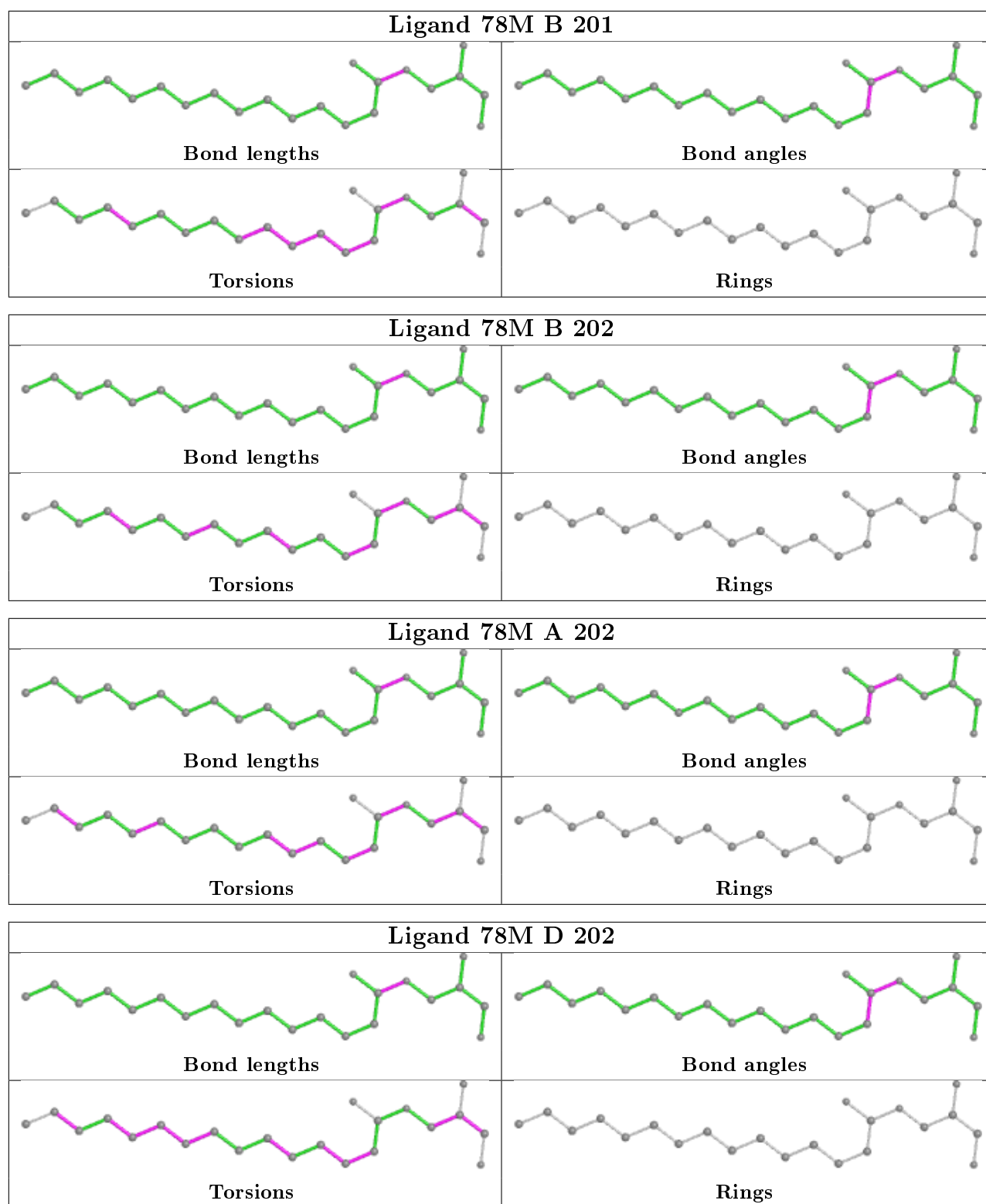
Mol	Chain	Res	Type	Clashes	Symm-Clashes
2	A	201	78M	2	0
2	B	203	78M	1	0
2	A	205	78M	9	0
2	D	203	78M	3	0
2	D	204	78M	1	0
2	A	203	78M	2	0
2	B	201	78M	2	0
2	B	202	78M	2	0
2	A	202	78M	2	0
2	D	202	78M	1	0
2	A	206	78M	3	0
2	A	204	78M	8	0

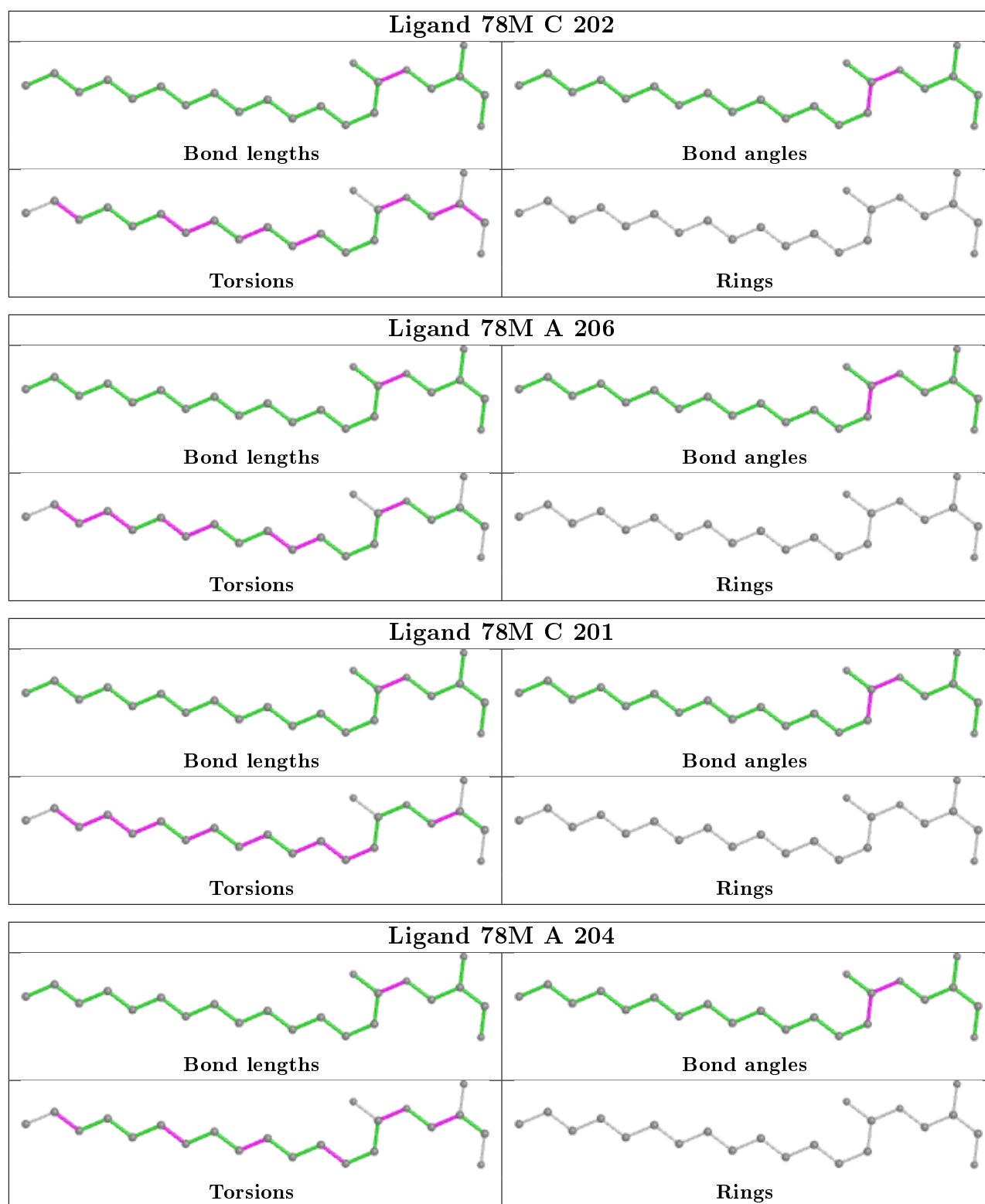
The following is a two-dimensional graphical depiction of Mogul quality analysis of bond lengths, bond angles, torsion angles, and ring geometry for all instances of the Ligand of Interest. In addition, ligands with molecular weight > 250 and outliers as shown on the validation Tables will also be included. For torsion angles, if less than 5% of the Mogul distribution of torsion angles is within 10 degrees of the torsion angle in question, then that torsion angle is considered an outlier. Any bond that is central to one or more torsion angles identified as an outlier by Mogul will be highlighted in the graph. For rings, the root-mean-square deviation (RMSD) between the ring in question and similar rings identified by Mogul is calculated over all ring torsion angles. If the average RMSD is greater than 60 degrees and the minimal RMSD between the ring in question and any Mogul-identified rings is also greater than 60 degrees, then that ring is considered an outlier. The outliers are highlighted in purple. The color gray indicates Mogul did not find sufficient equivalents in the CSD to analyse the geometry.











## 5.7 Other polymers [\(i\)](#)

There are no such residues in this entry.

## 5.8 Polymer linkage issues

There are no chain breaks in this entry.

## 6 Fit of model and data

### 6.1 Protein, DNA and RNA chains

In the following table, the column labelled ‘#RSRZ> 2’ contains the number (and percentage) of RSRZ outliers, followed by percent RSRZ outliers for the chain as percentile scores relative to all X-ray entries and entries of similar resolution. The OWAB column contains the minimum, median, 95<sup>th</sup> percentile and maximum values of the occupancy-weighted average B-factor per residue. The column labelled ‘Q< 0.9’ lists the number of (and percentage) of residues with an average occupancy less than 0.9.

Mol	Chain	Analysed	<RSRZ>	#RSRZ>2	OWAB(Å <sup>2</sup> )	Q<0.9
1	A	116/130 (89%)	-0.16	4 (3%) 45 35	27, 41, 104, 121	0
1	B	99/130 (76%)	-0.47	1 (1%) 82 77	27, 40, 103, 120	0
1	C	92/130 (70%)	-0.25	5 (5%) 25 17	25, 45, 100, 119	0
1	D	108/130 (83%)	-0.42	0 100 100	28, 42, 80, 106	0
1	E	89/130 (68%)	-0.08	5 (5%) 24 16	32, 59, 115, 144	0
1	F	88/130 (67%)	-0.01	4 (4%) 33 23	32, 54, 128, 146	0
All	All	592/780 (75%)	-0.24	19 (3%) 47 37	25, 46, 113, 146	0

All (19) RSRZ outliers are listed below:

Mol	Chain	Res	Type	RSRZ
1	F	36	VAL	4.9
1	C	86	TYR	4.9
1	A	89	LEU	4.8
1	F	119	HIS	3.7
1	C	84	SER	3.6
1	A	88	GLU	3.4
1	F	121	GLY	3.3
1	C	88	GLU	3.2
1	E	34	GLU	3.0
1	E	36	VAL	2.9
1	F	120	PHE	2.5
1	C	85	GLU	2.3
1	A	7	PHE	2.1
1	A	84	SER	2.1
1	E	119	HIS	2.1
1	E	48	LEU	2.1
1	C	89	LEU	2.1
1	B	27	ASN	2.0
1	E	121	GLY	2.0

## 6.2 Non-standard residues in protein, DNA, RNA chains [i](#)

There are no non-standard protein/DNA/RNA residues in this entry.

## 6.3 Carbohydrates [i](#)

There are no carbohydrates in this entry.

## 6.4 Ligands [i](#)

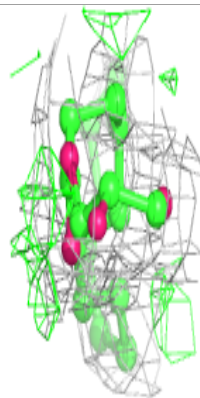
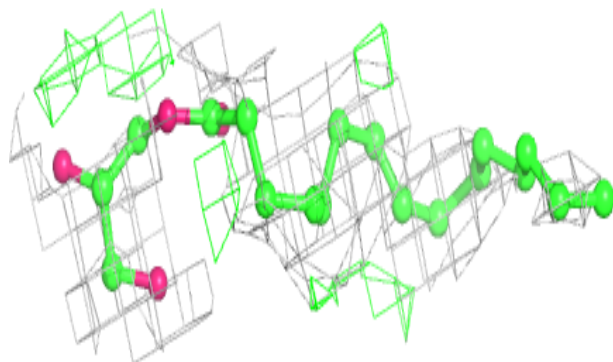
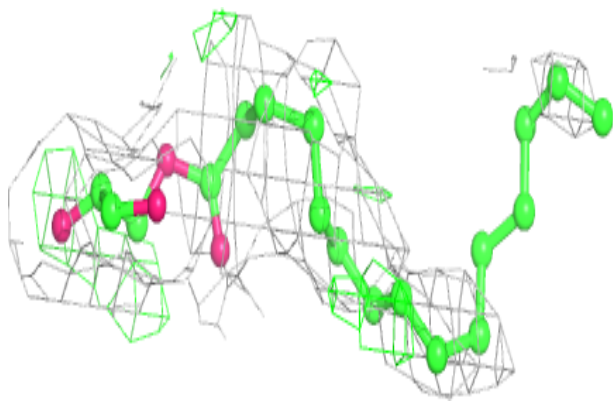
In the following table, the Atoms column lists the number of modelled atoms in the group and the number defined in the chemical component dictionary. The B-factors column lists the minimum, median, 95<sup>th</sup> percentile and maximum values of B factors of atoms in the group. The column labelled 'Q< 0.9' lists the number of atoms with occupancy less than 0.9.

Mol	Type	Chain	Res	Atoms	RSCC	RSR	B-factors( $\text{\AA}^2$ )	Q<0.9
2	78M	A	201	22/22	0.64	0.26	81,106,114,119	0
2	78M	C	201	22/22	0.70	0.44	76,92,107,111	0
2	78M	D	201	22/22	0.71	0.34	71,94,111,115	0
2	78M	A	203	22/22	0.73	0.40	49,78,89,104	0
2	78M	B	204	22/22	0.75	0.31	72,89,99,110	0
2	78M	A	205	22/22	0.77	0.37	64,84,98,99	0
2	78M	B	202	22/22	0.79	0.41	48,68,95,116	0
2	78M	D	202	22/22	0.81	0.37	41,61,85,92	0
2	78M	B	201	22/22	0.82	0.35	62,76,95,106	0
2	78M	D	204	22/22	0.82	0.38	53,73,80,82	0
2	78M	C	202	22/22	0.84	0.22	36,69,109,114	0
2	78M	B	203	22/22	0.84	0.34	40,64,101,114	0
2	78M	D	203	22/22	0.85	0.26	61,83,98,104	0
2	78M	A	206	22/22	0.86	0.55	57,62,79,86	0
2	78M	A	202	22/22	0.88	0.24	53,71,92,95	0
2	78M	A	204	22/22	0.88	0.41	42,67,81,97	0

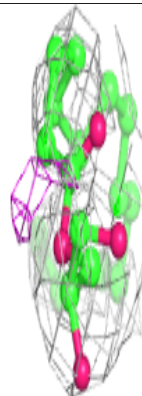
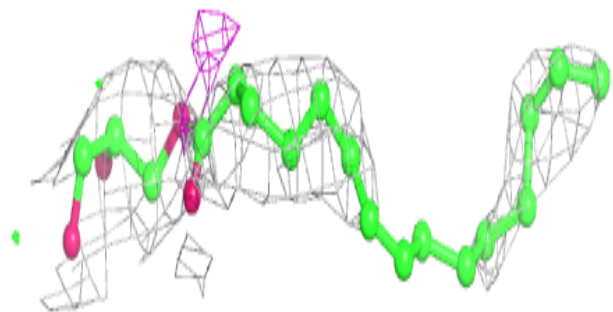
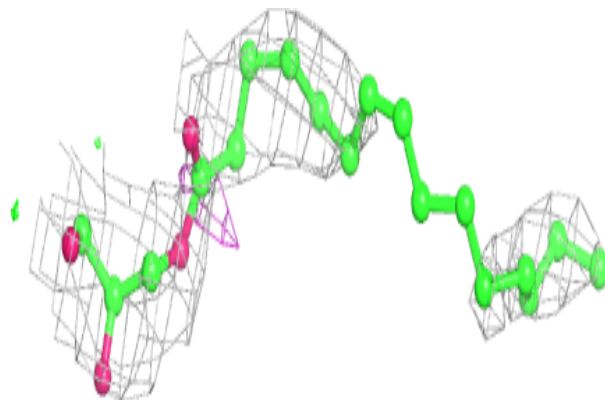
The following is a graphical depiction of the model fit to experimental electron density of all instances of the Ligand of Interest. In addition, ligands with molecular weight > 250 and outliers as shown on the geometry validation Tables will also be included. Each fit is shown from different orientation to approximate a three-dimensional view.

**Electron density around 78M A 201:**

$2mF_o-DF_c$  (at 0.7 rnsd) in gray  
 $mF_o-DF_c$  (at 3 rnsd) in purple (negative)  
and green (positive)

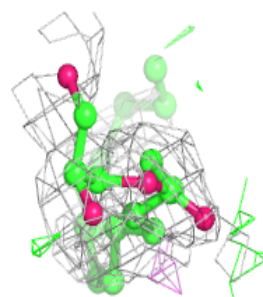
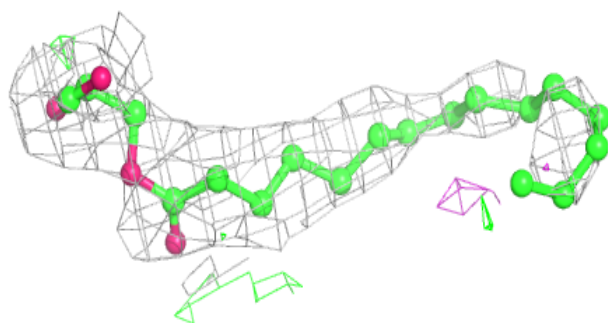
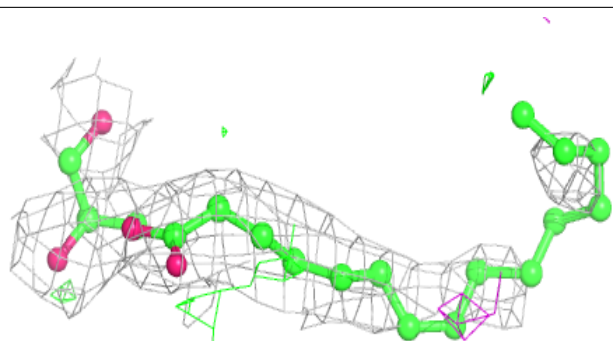
**Electron density around 78M C 201:**

$2mF_o-DF_c$  (at 0.7 rnsd) in gray  
 $mF_o-DF_c$  (at 3 rnsd) in purple (negative)  
and green (positive)

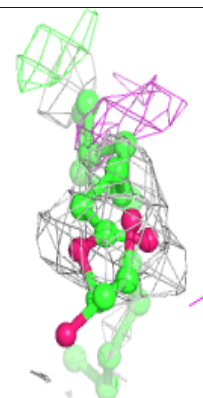
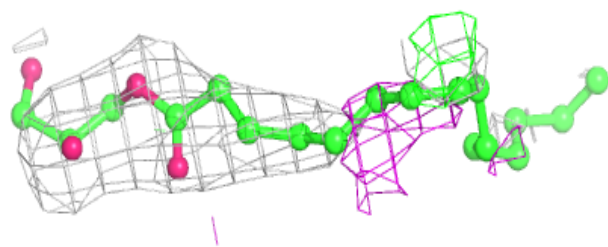
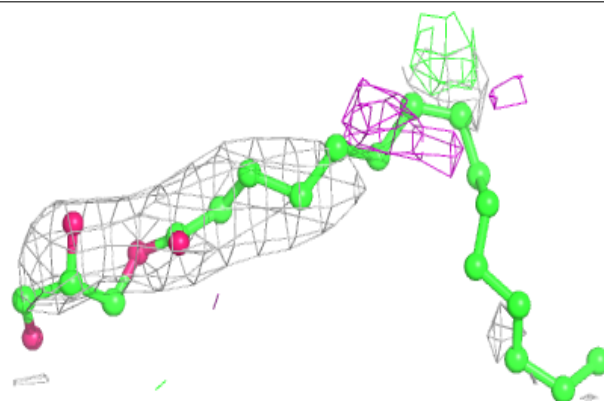


**Electron density around 78M D 201:**

$2mF_o-DF_c$  (at 0.7 rmsd) in gray  
 $mF_o-DF_c$  (at 3 rmsd) in purple (negative)  
and green (positive)

**Electron density around 78M A 203:**

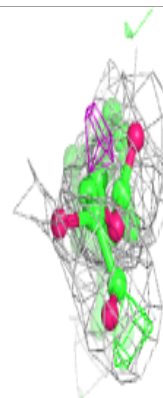
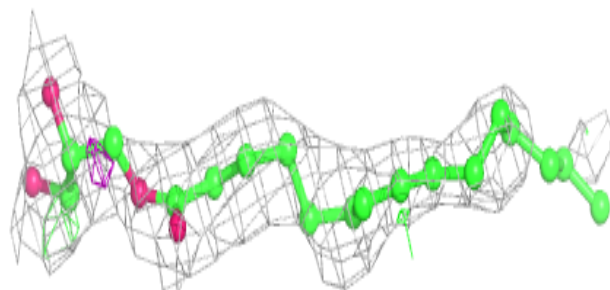
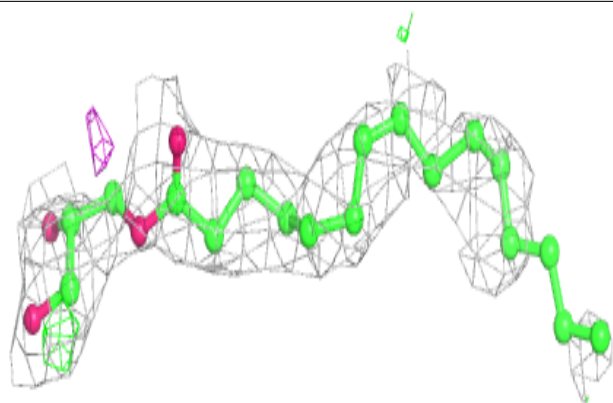
$2mF_o-DF_c$  (at 0.7 rmsd) in gray  
 $mF_o-DF_c$  (at 3 rmsd) in purple (negative)  
and green (positive)



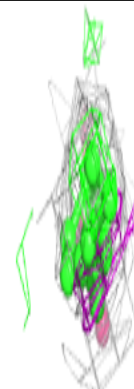
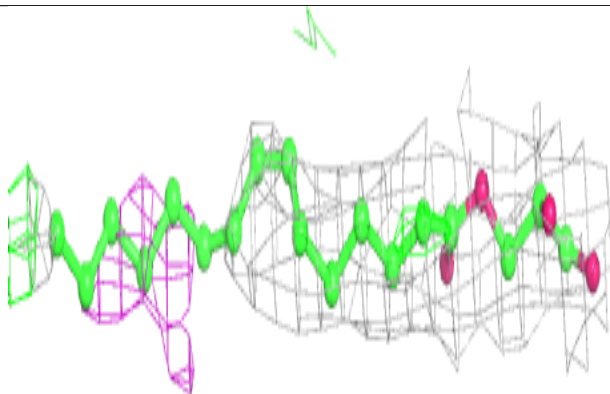
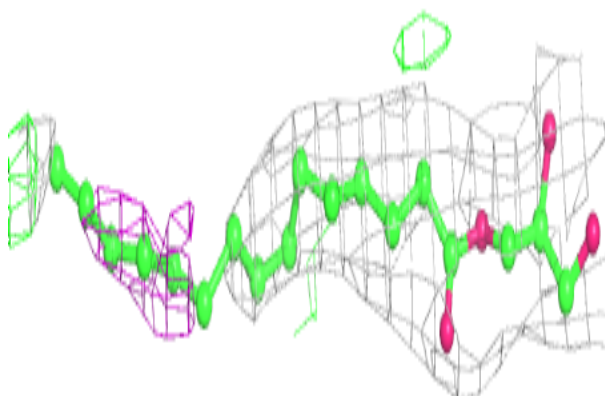


**Electron density around 78M B 204:**

$2mF_o-DF_c$  (at 0.7 rmsd) in gray  
 $mF_o-DF_c$  (at 3 rmsd) in purple (negative)  
and green (positive)

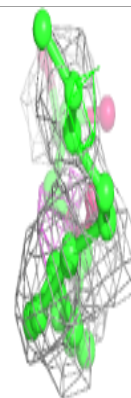
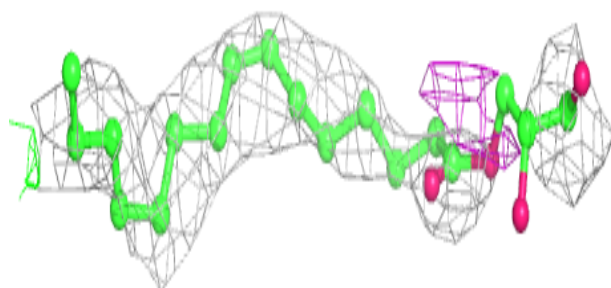
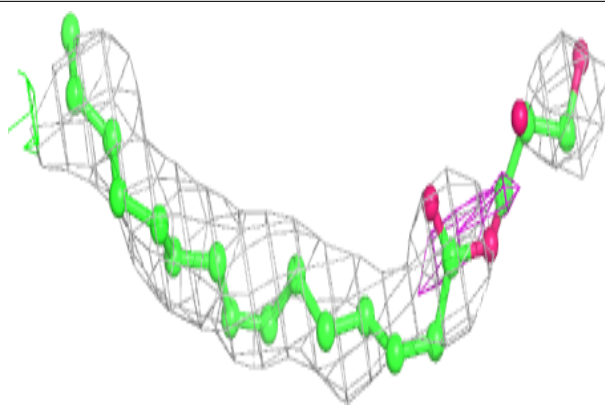
**Electron density around 78M A 205:**

$2mF_o-DF_c$  (at 0.7 rmsd) in gray  
 $mF_o-DF_c$  (at 3 rmsd) in purple (negative)  
and green (positive)

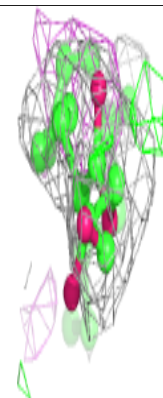
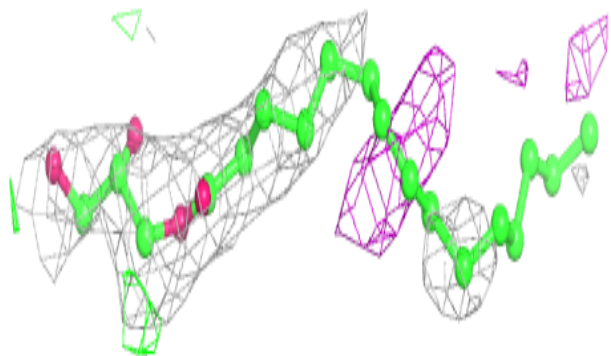
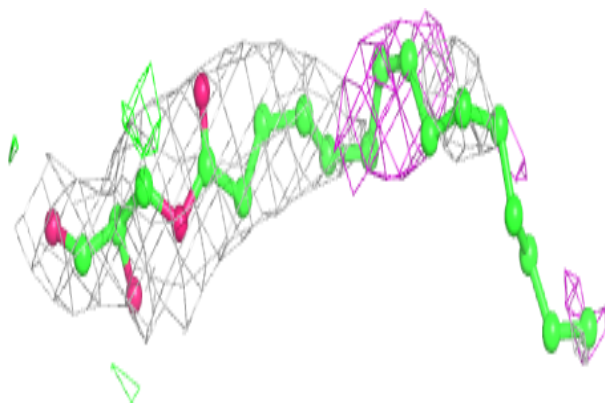


**Electron density around 78M B 202:**

$2mF_o-DF_c$  (at 0.7 rmsd) in gray  
 $mF_o-DF_c$  (at 3 rmsd) in purple (negative)  
and green (positive)

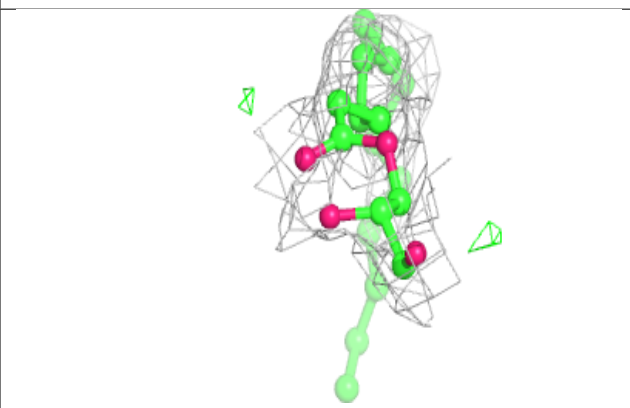
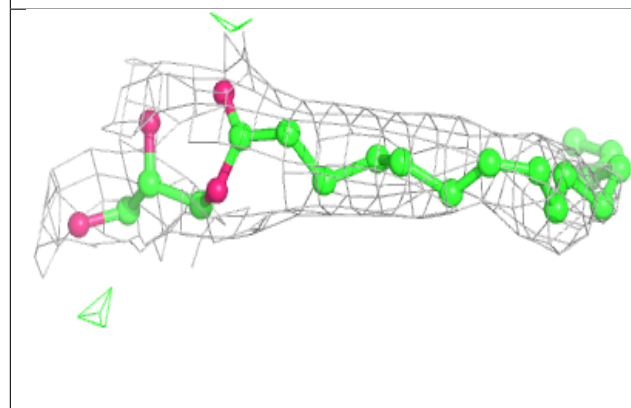
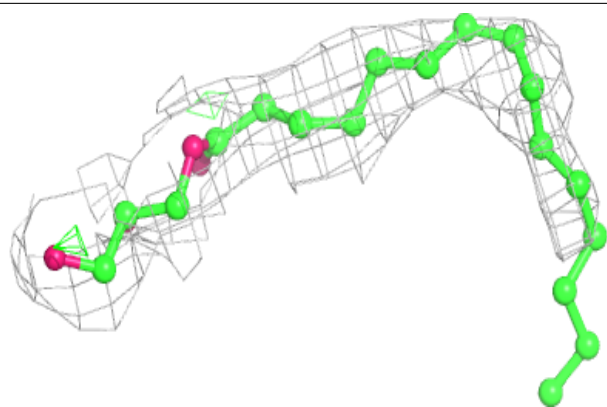
**Electron density around 78M D 202:**

$2mF_o-DF_c$  (at 0.7 rmsd) in gray  
 $mF_o-DF_c$  (at 3 rmsd) in purple (negative)  
and green (positive)

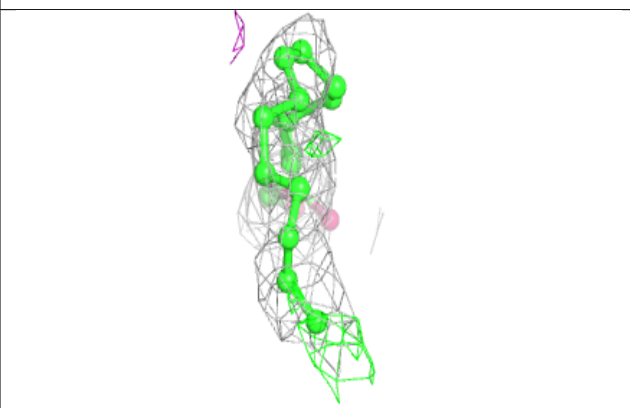
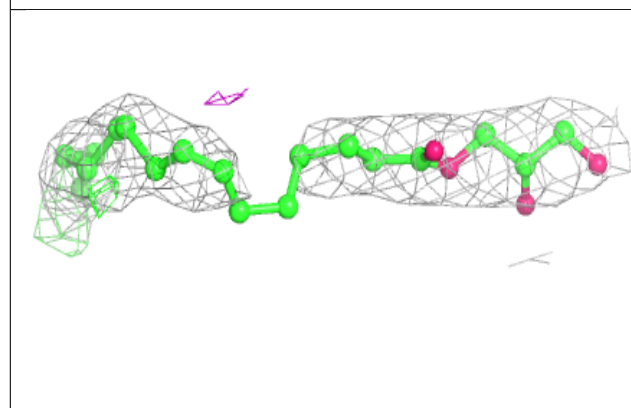
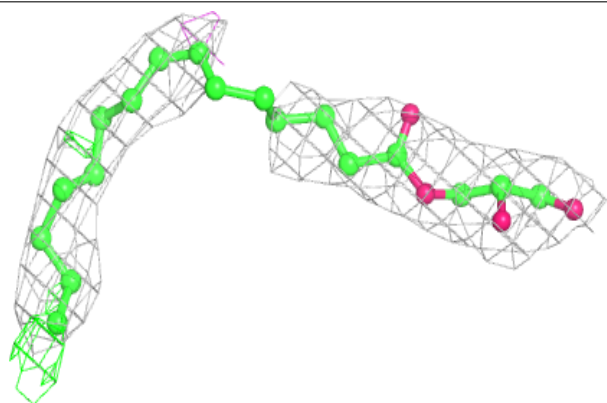


**Electron density around 78M B 201:**

$2mF_o-DF_c$  (at 0.7 rmsd) in gray  
 $mF_o-DF_c$  (at 3 rmsd) in purple (negative)  
and green (positive)

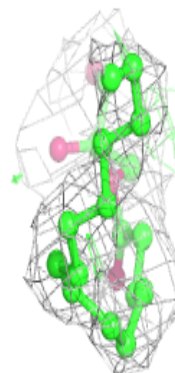
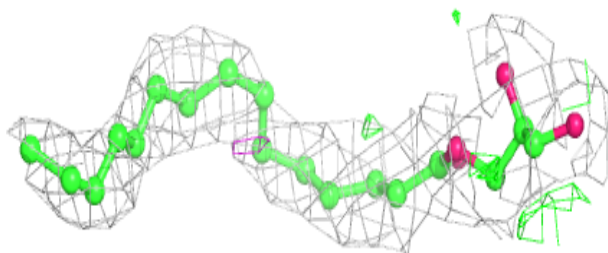
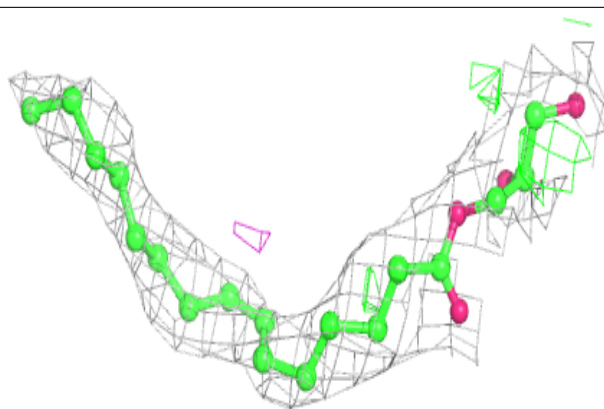
**Electron density around 78M D 204:**

$2mF_o-DF_c$  (at 0.7 rmsd) in gray  
 $mF_o-DF_c$  (at 3 rmsd) in purple (negative)  
and green (positive)

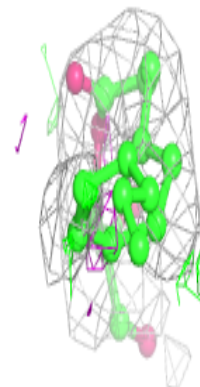
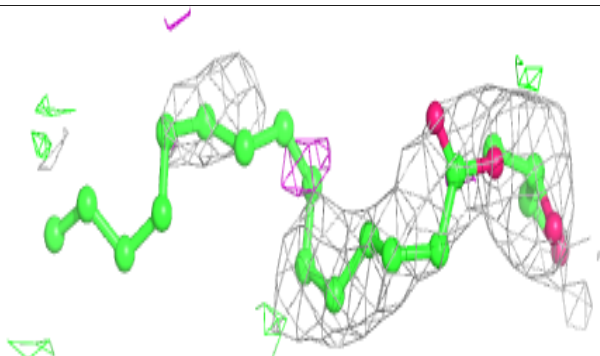
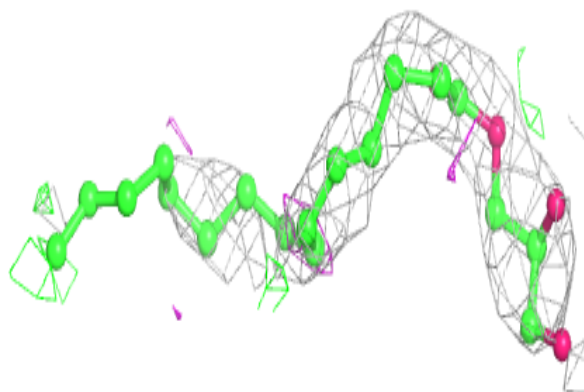


**Electron density around 78M C 202:**

$2mF_o-DF_c$  (at 0.7 rmsd) in gray  
 $mF_o-DF_c$  (at 3 rmsd) in purple (negative)  
and green (positive)

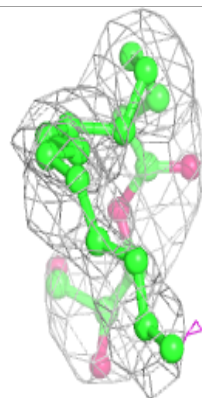
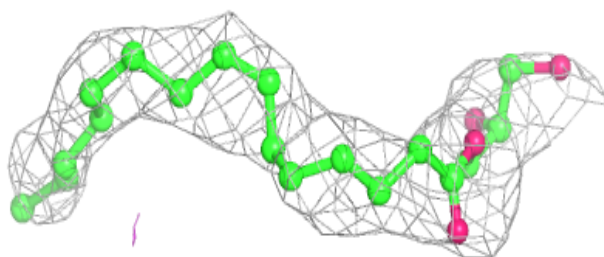
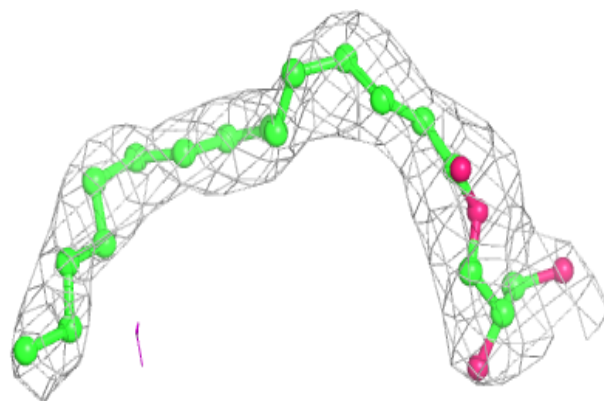
**Electron density around 78M B 203:**

$2mF_o-DF_c$  (at 0.7 rmsd) in gray  
 $mF_o-DF_c$  (at 3 rmsd) in purple (negative)  
and green (positive)

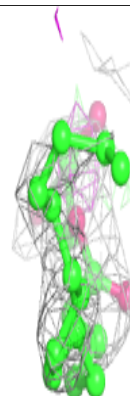
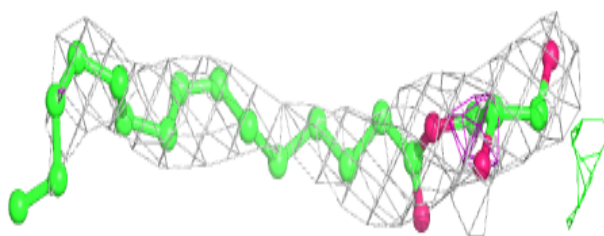
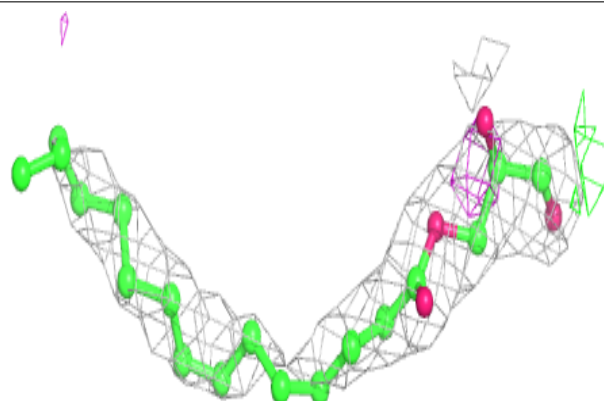


**Electron density around 78M D 203:**

$2mF_o-DF_c$  (at 0.7 rmsd) in gray  
 $mF_o-DF_c$  (at 3 rmsd) in purple (negative)  
and green (positive)

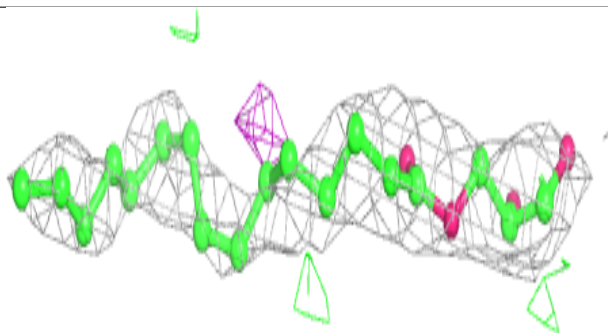
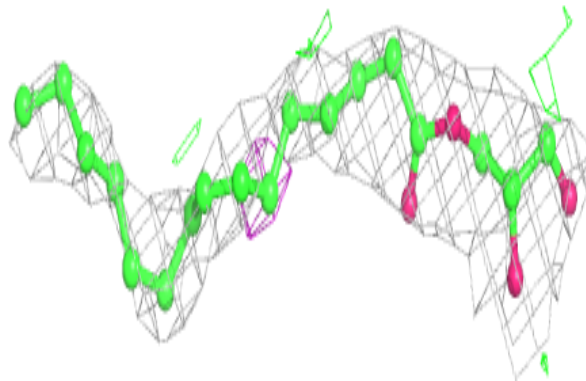
**Electron density around 78M A 206:**

$2mF_o-DF_c$  (at 0.7 rmsd) in gray  
 $mF_o-DF_c$  (at 3 rmsd) in purple (negative)  
and green (positive)

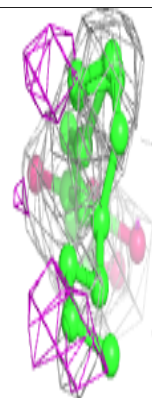
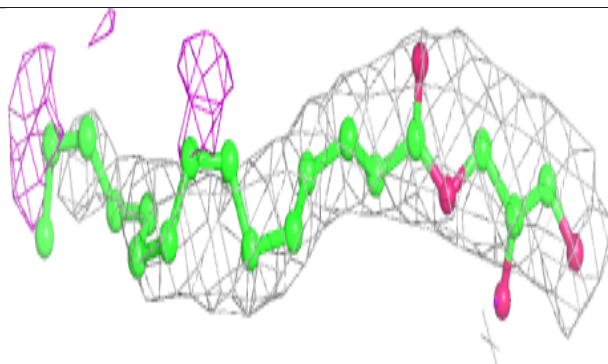
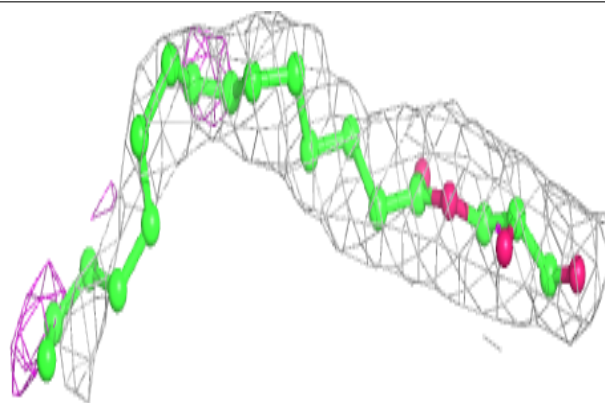


**Electron density around 78M A 202:**

$2mF_o-DF_c$  (at 0.7 rmsd) in gray  
 $mF_o-DF_c$  (at 3 rmsd) in purple (negative)  
and green (positive)

**Electron density around 78M A 204:**

$2mF_o-DF_c$  (at 0.7 rmsd) in gray  
 $mF_o-DF_c$  (at 3 rmsd) in purple (negative)  
and green (positive)



## 6.5 Other polymers [i](#)

There are no such residues in this entry.