



Full wwPDB X-ray Structure Validation Report ⓘ

Apr 12, 2018 – 10:58 AM EDT

PDB ID : 4D6G
Title : Crystal structure of a family 98 glycoside hydrolase catalytic module (Sp3GH98) in complex with the blood group A-trisaccharide (L19 mutant)
Authors : Kwan, D.H.; Constantinescu, I.; Chapanian, R.; Higgins, M.A.; Samain, E.; Boraston, A.B.; Kizhakkedathu, J.N.; Withers, S.G.
Deposited on : 2014-11-11
Resolution : 1.24 Å(reported)

This is a Full wwPDB X-ray Structure Validation Report for a publicly released PDB entry.

We welcome your comments at validation@mail.wwpdb.org

A user guide is available at

<https://www.wwpdb.org/validation/2017/XrayValidationReportHelp>

with specific help available everywhere you see the ⓘ symbol.

The following versions of software and data (see [references ⓘ](#)) were used in the production of this report:

MolProbity : 4.02b-467
Mogul : 1.7.3 (157068), CSD as539be (2018)
Xtriage (Phenix) : 1.13
EDS : rb-20031021
Percentile statistics : 20171227.v01 (using entries in the PDB archive December 27th 2017)
Refmac : 5.8.0158
CCP4 : 7.0 (Gargrove)
Ideal geometry (proteins) : Engh & Huber (2001)
Ideal geometry (DNA, RNA) : Parkinson et al. (1996)
Validation Pipeline (wwPDB-VP) : rb-20031021

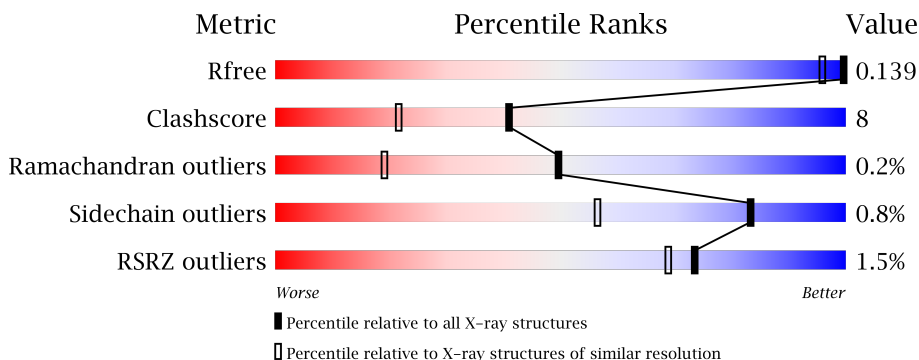
1 Overall quality at a glance

The following experimental techniques were used to determine the structure:

X-RAY DIFFRACTION

The reported resolution of this entry is 1.24 Å.

Percentile scores (ranging between 0-100) for global validation metrics of the entry are shown in the following graphic. The table shows the number of entries on which the scores are based.



Metric	Whole archive (#Entries)	Similar resolution (#Entries, resolution range(Å))
R_{free}	111664	1699 (1.28-1.20)
Clashscore	122126	1783 (1.28-1.20)
Ramachandran outliers	120053	1724 (1.28-1.20)
Sidechain outliers	120020	1722 (1.28-1.20)
RSRZ outliers	108989	1669 (1.28-1.20)

The table below summarises the geometric issues observed across the polymeric chains and their fit to the electron density. The red, orange, yellow and green segments on the lower bar indicate the fraction of residues that contain outliers for ≥ 3 , 2, 1 and 0 types of geometric quality criteria. A grey segment represents the fraction of residues that are not modelled. The numeric value for each fraction is indicated below the corresponding segment, with a dot representing fractions $\leq 5\%$. The upper red bar (where present) indicates the fraction of residues that have poor fit to the electron density. The numeric value is given above the bar.

Mol	Chain	Length	Quality of chain
1	A	599	

2 Entry composition [i](#)

There are 7 unique types of molecules in this entry. The entry contains 6168 atoms, of which 0 are hydrogens and 0 are deuteriums.

In the tables below, the ZeroOcc column contains the number of atoms modelled with zero occupancy, the AltConf column contains the number of residues with at least one atom in alternate conformation and the Trace column contains the number of residues modelled with at most 2 atoms.

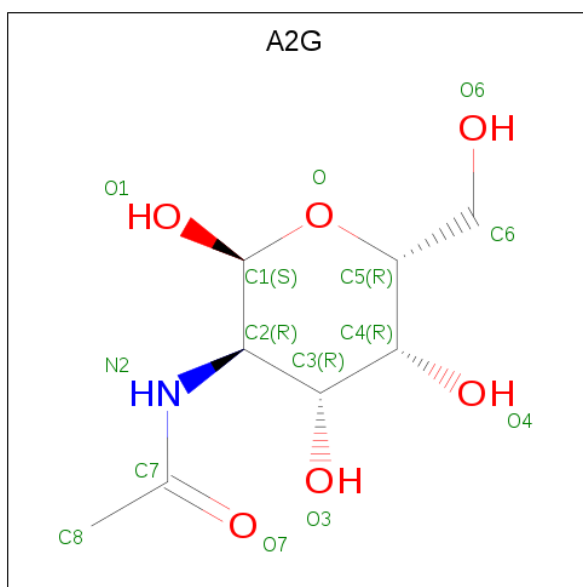
- Molecule 1 is a protein called GLYCOSIDE HYDROLASE.

Mol	Chain	Residues	Atoms					ZeroOcc	AltConf	Trace
			Total	C	N	O	S			
1	A	587	5054	3228	854	957	15	0	33	0

There are 19 discrepancies between the modelled and reference sequences:

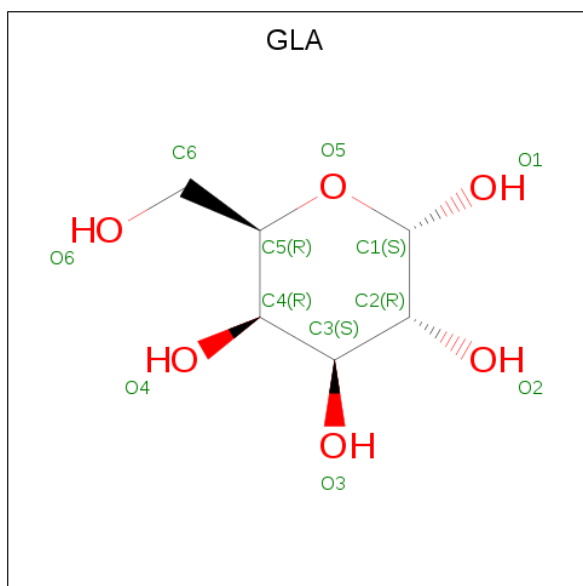
Chain	Residue	Modelled	Actual	Comment	Reference
A	530	HIS	TYR	engineered mutation	UNP A5LBQ0
A	559	SER	ASN	engineered mutation	UNP A5LBQ0
A	592	SER	ASN	engineered mutation	UNP A5LBQ0
A	1004	LEU	-	expression tag	UNP A5LBQ0
A	1005	GLU	-	expression tag	UNP A5LBQ0
A	1006	HIS	-	expression tag	UNP A5LBQ0
A	1007	THR	-	expression tag	UNP A5LBQ0
A	1008	ARG	-	expression tag	UNP A5LBQ0
A	1009	ALA	-	expression tag	UNP A5LBQ0
A	1010	PRO	-	expression tag	UNP A5LBQ0
A	1011	PRO	-	expression tag	UNP A5LBQ0
A	1012	PRO	-	expression tag	UNP A5LBQ0
A	1013	PRO	-	expression tag	UNP A5LBQ0
A	1014	PRO	-	expression tag	UNP A5LBQ0
A	1015	LEU	-	expression tag	UNP A5LBQ0
A	1016	ARG	-	expression tag	UNP A5LBQ0
A	1017	SER	-	expression tag	UNP A5LBQ0
A	1018	GLY	-	expression tag	UNP A5LBQ0
A	1019	CYS	-	expression tag	UNP A5LBQ0

- Molecule 2 is N-ACETYL-2-DEOXY-2-AMINO-GALACTOSE (three-letter code: A2G) (formula: C₈H₁₅NO₆).



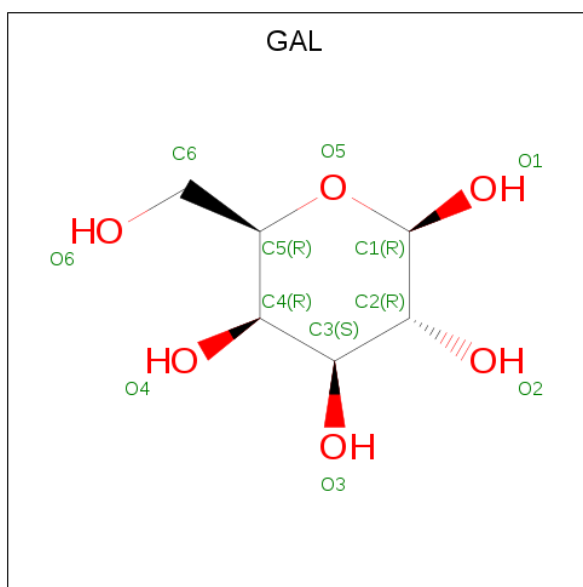
Mol	Chain	Residues	Atoms				ZeroOcc	AltConf
			Total	C	N	O		
2	A	1	28	16	2	10	0	1

- Molecule 3 is ALPHA D-GALACTOSE (three-letter code: GLA) (formula: C₆H₁₂O₆).



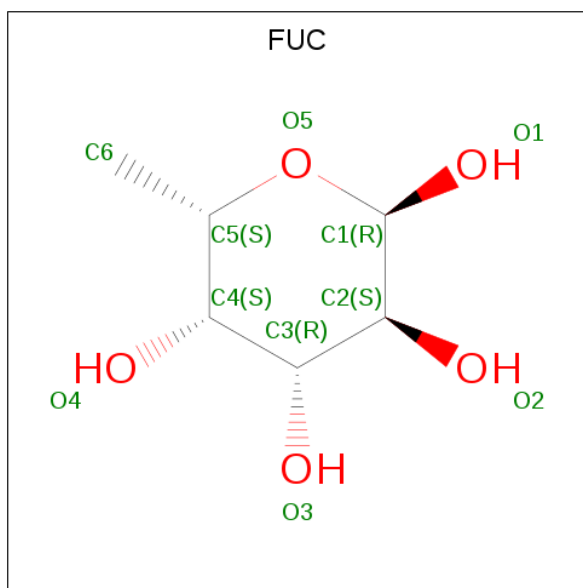
Mol	Chain	Residues	Atoms			ZeroOcc	AltConf
			Total	C	O		
3	A	1	12	6	6	0	1

- Molecule 4 is BETA-D-GALACTOSE (three-letter code: GAL) (formula: C₆H₁₂O₆).



Mol	Chain	Residues	Atoms			ZeroOcc	AltConf
4	A	1	Total	C	O	0	1
			12	6	6		

- Molecule 5 is ALPHA-L-FUCOSE (three-letter code: FUC) (formula: $C_6H_{12}O_5$).



Mol	Chain	Residues	Atoms			ZeroOcc	AltConf
5	A	1	Total	C	O	0	0
			10	6	4		

- Molecule 6 is 1,2-ETHANEDIOL (three-letter code: EDO) (formula: $C_2H_6O_2$).



Mol	Chain	Residues	Atoms			ZeroOcc	AltConf
6	A	1	Total	C	O	0	0
			4	2	2		

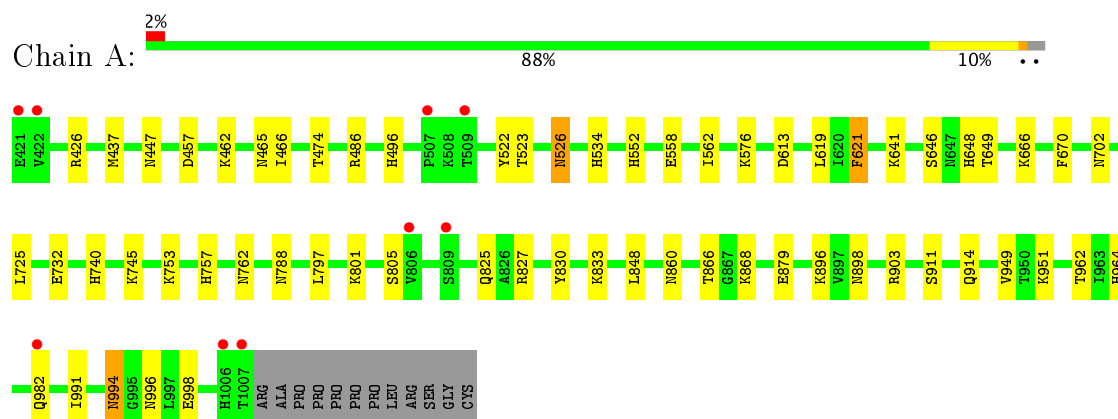
- Molecule 7 is water.

Mol	Chain	Residues	Atoms		ZeroOcc	AltConf
7	A	1042	Total	O	0	6
			1048	1048		

3 Residue-property plots [i](#)

These plots are drawn for all protein, RNA and DNA chains in the entry. The first graphic for a chain summarises the proportions of the various outlier classes displayed in the second graphic. The second graphic shows the sequence view annotated by issues in geometry and electron density. Residues are color-coded according to the number of geometric quality criteria for which they contain at least one outlier: green = 0, yellow = 1, orange = 2 and red = 3 or more. A red dot above a residue indicates a poor fit to the electron density ($RSRZ > 2$). Stretches of 2 or more consecutive residues without any outlier are shown as a green connector. Residues present in the sample, but not in the model, are shown in grey.

- Molecule 1: GLYCOSIDE HYDROLASE



4 Data and refinement statistics i

Property	Value	Source
Space group	C 2 2 21	Depositor
Cell constants a, b, c, α , β , γ	92.25Å 154.02Å 96.66Å 90.00° 90.00° 90.00°	Depositor
Resolution (Å)	48.33 – 1.24 48.33 – 1.24	Depositor EDS
% Data completeness (in resolution range)	99.5 (48.33-1.24) 99.5 (48.33-1.24)	Depositor EDS
R_{merge}	0.04	Depositor
R_{sym}	(Not available)	Depositor
$\langle I/\sigma(I) \rangle$ ¹	3.75 (at 1.24Å)	Xtrriage
Refinement program	REFMAC 5.5.0109	Depositor
R, R_{free}	0.117 , 0.133 0.126 , 0.139	Depositor DCC
R_{free} test set	9686 reflections (5.03%)	wwPDB-VP
Wilson B-factor (Å ²)	9.1	Xtrriage
Anisotropy	0.137	Xtrriage
Bulk solvent k_{sol} (e/Å ³), B_{sol} (Å ²)	0.33 , 64.7	EDS
L-test for twinning ²	$\langle L \rangle = 0.49$, $\langle L^2 \rangle = 0.32$	Xtrriage
Estimated twinning fraction	0.013 for 1/2*h-1/2*k,-3/2*h-1/2*k,-l 0.016 for 1/2*h+1/2*k,3/2*h-1/2*k,-l	Xtrriage
F_o, F_c correlation	0.98	EDS
Total number of atoms	6168	wwPDB-VP
Average B, all atoms (Å ²)	15.0	wwPDB-VP

Xtrriage's analysis on translational NCS is as follows: *The largest off-origin peak in the Patterson function is 4.06% of the height of the origin peak. No significant pseudotranslation is detected.*

¹Intensities estimated from amplitudes.

²Theoretical values of $\langle |L| \rangle$, $\langle L^2 \rangle$ for acentric reflections are 0.5, 0.333 respectively for untwinned datasets, and 0.375, 0.2 for perfectly twinned datasets.

5 Model quality [i](#)

5.1 Standard geometry [i](#)

Bond lengths and bond angles in the following residue types are not validated in this section: A2G, GLA, GAL, EDO, FUC

The Z score for a bond length (or angle) is the number of standard deviations the observed value is removed from the expected value. A bond length (or angle) with $|Z| > 5$ is considered an outlier worth inspection. RMSZ is the root-mean-square of all Z scores of the bond lengths (or angles).

Mol	Chain	Bond lengths		Bond angles	
		RMSZ	# $ Z > 5$	RMSZ	# $ Z > 5$
1	A	0.51	1/5188 (0.0%)	0.69	1/7023 (0.0%)

All (1) bond length outliers are listed below:

Mol	Chain	Res	Type	Atoms	Z	Observed(Å)	Ideal(Å)
1	A	911	SER	CB-OG	-5.73	1.34	1.42

All (1) bond angle outliers are listed below:

Mol	Chain	Res	Type	Atoms	Z	Observed(°)	Ideal(°)
1	A	827	ARG	NE-CZ-NH2	-5.86	117.37	120.30

There are no chirality outliers.

There are no planarity outliers.

5.2 Too-close contacts [i](#)

In the following table, the Non-H and H(model) columns list the number of non-hydrogen atoms and hydrogen atoms in the chain respectively. The H(added) column lists the number of hydrogen atoms added and optimized by MolProbity. The Clashes column lists the number of clashes within the asymmetric unit, whereas Symm-Clashes lists symmetry related clashes.

Mol	Chain	Non-H	H(model)	H(added)	Clashes	Symm-Clashes
1	A	5054	0	4856	78	0
2	A	28	0	26	0	0
3	A	12	0	10	0	0
4	A	12	0	10	1	0
5	A	10	0	10	0	0
6	A	4	0	6	0	0

Continued on next page...

Continued from previous page...

Mol	Chain	Non-H	H(model)	H(added)	Clashes	Symm-Clashes
7	A	1048	0	0	39	4
All	All	6168	0	4918	78	4

The all-atom clashscore is defined as the number of clashes found per 1000 atoms (including hydrogen atoms). The all-atom clashscore for this structure is 8.

All (78) close contacts within the same asymmetric unit are listed below, sorted by their clash magnitude.

Atom-1	Atom-2	Interatomic distance (Å)	Clash overlap (Å)
1:A:762[A]:ASN:ND2	7:A:3348:HOH:O	1.82	1.10
1:A:486[A]:ARG:NH1	7:A:3130:HOH:O	1.96	0.98
1:A:732[B]:GLU:OE1	1:A:996[B]:ASN:OD1	1.61	0.97
1:A:649[A]:THR:HG21	7:A:3393:HOH:O	1.71	0.90
1:A:848[B]:LEU:HD21	7:A:3550:HOH:O	1.72	0.86
1:A:437[A]:MET:CG	1:A:474[A]:THR:CG2	2.58	0.81
1:A:903:ARG:H	1:A:994:ASN:HD21	1.28	0.77
1:A:462:LYS:NZ	7:A:3083:HOH:O	2.09	0.75
1:A:426:ARG:HH11	1:A:552:HIS:HD2	1.34	0.75
1:A:613[B]:ASP:OD1	7:A:3378:HOH:O	2.04	0.75
1:A:666[A]:LYS:CE	7:A:3470:HOH:O	2.25	0.74
1:A:437[A]:MET:HG3	1:A:474[A]:THR:CG2	2.17	0.73
1:A:666[A]:LYS:NZ	7:A:3470:HOH:O	1.68	0.73
1:A:670:PHE:H	1:A:860:ASN:HD21	1.38	0.71
1:A:486[A]:ARG:NH2	7:A:3058:HOH:O	2.27	0.67
1:A:757:HIS:HE1	1:A:797:LEU:O	1.78	0.67
1:A:465[B]:ASN:ND2	7:A:3087:HOH:O	2.29	0.66
1:A:745[B]:LYS:NZ	7:A:3437:HOH:O	1.73	0.64
1:A:465[B]:ASN:CG	7:A:3087:HOH:O	2.35	0.64
1:A:666[B]:LYS:CE	7:A:3468:HOH:O	2.46	0.64
1:A:437[A]:MET:HG2	1:A:474[A]:THR:HG23	1.80	0.63
1:A:670:PHE:H	1:A:860:ASN:ND2	1.96	0.63
1:A:868:LYS:CG	7:A:3837:HOH:O	2.48	0.62
1:A:437[A]:MET:CG	1:A:474[A]:THR:HG23	2.29	0.62
1:A:496:HIS:HD2	7:A:3071:HOH:O	1.84	0.61
1:A:437[A]:MET:HG2	1:A:474[A]:THR:CG2	2.30	0.60
1:A:486[A]:ARG:HD2	7:A:3129:HOH:O	2.01	0.60
1:A:962:THR:OG1	1:A:964:HIS:HE1	1.84	0.60
1:A:666[B]:LYS:NZ	7:A:3468:HOH:O	2.32	0.58
1:A:426:ARG:HH11	1:A:552:HIS:CD2	2.19	0.57
1:A:641:LYS:NZ	1:A:702:ASN:HD22	2.03	0.57
1:A:951:LYS:HE3	7:A:4027:HOH:O	2.05	0.56

Continued on next page...

Continued from previous page...

Atom-1	Atom-2	Interatomic distance (Å)	Clash overlap (Å)
1:A:740:HIS:HE1	7:A:3643:HOH:O	1.88	0.56
1:A:534:HIS:HE1	7:A:3185:HOH:O	1.89	0.55
1:A:868:LYS:HG3	7:A:3837:HOH:O	2.05	0.55
1:A:648:HIS:HE1	7:A:3446:HOH:O	1.89	0.54
1:A:641:LYS:HZ1	1:A:702:ASN:HD22	1.55	0.54
1:A:762[A]:ASN:HB2	7:A:3685:HOH:O	2.07	0.53
1:A:646:SER:OG	1:A:648:HIS:HD2	1.91	0.53
1:A:522:TYR:HA	1:A:526:ASN:HD21	1.74	0.52
1:A:801:LYS:NZ	7:A:3376:HOH:O	2.42	0.51
1:A:522:TYR:HA	1:A:526:ASN:ND2	2.25	0.50
1:A:526:ASN:O	1:A:534:HIS:HD2	1.94	0.49
1:A:702:ASN:HD21	1:A:788[A]:ASN:HB2	1.77	0.49
1:A:732[A]:GLU:HG3	7:A:3616:HOH:O	2.12	0.49
1:A:666[B]:LYS:HE2	7:A:3468:HOH:O	2.09	0.48
1:A:732[B]:GLU:HG3	7:A:3616:HOH:O	2.13	0.48
1:A:757:HIS:CE1	1:A:797:LEU:O	2.64	0.48
1:A:825[B]:GLN:NE2	7:A:3777:HOH:O	2.47	0.48
1:A:830:TYR:O	1:A:833:LYS:HG2	2.14	0.48
1:A:866:THR:HG22	1:A:879[B]:GLU:HG2	1.95	0.48
1:A:868:LYS:HG2	7:A:3837:HOH:O	2.12	0.47
1:A:621:PHE:HB2	1:A:649[B]:THR:HG21	1.96	0.47
1:A:903:ARG:H	1:A:994:ASN:ND2	2.06	0.47
1:A:994:ASN:HD22	1:A:994:ASN:C	2.19	0.46
1:A:732[A]:GLU:HG2	7:A:3609[A]:HOH:O	2.15	0.45
1:A:896:LYS:HE2	1:A:898:ASN:HD21	1.81	0.45
1:A:437[A]:MET:HG3	1:A:474[A]:THR:HG21	1.96	0.44
1:A:558:GLU:OE2	4:A:2009[B]:GAL:O1	2.33	0.44
1:A:753:LYS:NZ	7:A:3679:HOH:O	2.15	0.44
1:A:898:ASN:OD1	1:A:998[B]:GLU:HG2	2.18	0.44
1:A:437[B]:MET:SD	1:A:462:LYS:HE3	2.57	0.44
1:A:437[A]:MET:HG3	1:A:474[A]:THR:HG22	1.97	0.43
1:A:702:ASN:HD21	1:A:788[B]:ASN:HB3	1.82	0.43
1:A:788[B]:ASN:ND2	7:A:3549:HOH:O	2.50	0.43
1:A:552:HIS:HE1	7:A:3214:HOH:O	2.01	0.43
1:A:466:ILE:HD13	1:A:474[A]:THR:HG21	2.01	0.43
1:A:805:SER:HB2	7:A:3444:HOH:O	2.18	0.43
1:A:457:ASP:OD2	7:A:3083:HOH:O	2.21	0.42
1:A:641:LYS:NZ	1:A:788[A]:ASN:ND2	2.68	0.42
1:A:619:LEU:HD23	1:A:649[B]:THR:HG22	2.02	0.41
1:A:496:HIS:HE1	7:A:3150:HOH:O	2.02	0.41
1:A:725[A]:LEU:C	1:A:725[A]:LEU:HD23	2.41	0.41

Continued on next page...

Continued from previous page...

Atom-1	Atom-2	Interatomic distance (Å)	Clash overlap (Å)
1:A:523:THR:H	1:A:526:ASN:ND2	2.19	0.41
1:A:914[B]:GLN:NE2	7:A:3901:HOH:O	2.53	0.41
1:A:447:ASN:ND2	7:A:3062:HOH:O	2.51	0.40
1:A:576:LYS:NZ	7:A:3286:HOH:O	2.54	0.40
1:A:949:VAL:HA	1:A:991:ILE:O	2.21	0.40

All (4) symmetry-related close contacts are listed below. The label for Atom-2 includes the symmetry operator and encoded unit-cell translations to be applied.

Atom-1	Atom-2	Interatomic distance (Å)	Clash overlap (Å)
7:A:3182:HOH:O	7:A:3498:HOH:O[8_555]	1.67	0.53
7:A:3185:HOH:O	7:A:3490:HOH:O[8_555]	1.86	0.34
7:A:3134:HOH:O	7:A:3711:HOH:O[8_555]	2.08	0.12
7:A:3654:HOH:O	7:A:3654:HOH:O[3_555]	2.13	0.07

5.3 Torsion angles [i](#)

5.3.1 Protein backbone [i](#)

In the following table, the Percentiles column shows the percent Ramachandran outliers of the chain as a percentile score with respect to all X-ray entries followed by that with respect to entries of similar resolution.

The Analysed column shows the number of residues for which the backbone conformation was analysed, and the total number of residues.

Mol	Chain	Analysed	Favoured	Allowed	Outliers	Percentiles
1	A	619/599 (103%)	596 (96%)	22 (4%)	1 (0%)	49 19

All (1) Ramachandran outliers are listed below:

Mol	Chain	Res	Type
1	A	562	ILE

5.3.2 Protein sidechains [i](#)

In the following table, the Percentiles column shows the percent sidechain outliers of the chain as a percentile score with respect to all X-ray entries followed by that with respect to entries of similar resolution.

The Analysed column shows the number of residues for which the sidechain conformation was analysed, and the total number of residues.

Mol	Chain	Analysed	Rotameric	Outliers	Percentiles	
1	A	546/527 (104%)	542 (99%)	4 (1%)	85	60

All (4) residues with a non-rotameric sidechain are listed below:

Mol	Chain	Res	Type
1	A	526	ASN
1	A	621	PHE
1	A	982	GLN
1	A	994	ASN

Some sidechains can be flipped to improve hydrogen bonding and reduce clashes. All (21) such sidechains are listed below:

Mol	Chain	Res	Type
1	A	496	HIS
1	A	512	ASN
1	A	526	ASN
1	A	530	HIS
1	A	534	HIS
1	A	552	HIS
1	A	581	ASN
1	A	618	ASN
1	A	632	ASN
1	A	648	HIS
1	A	702	ASN
1	A	740	HIS
1	A	757	HIS
1	A	771	ASN
1	A	860	ASN
1	A	872	ASN
1	A	917	ASN
1	A	924	GLN
1	A	964	HIS
1	A	992	ASN
1	A	994	ASN

5.3.3 RNA

There are no RNA molecules in this entry.

5.4 Non-standard residues in protein, DNA, RNA chains [i](#)

There are no non-standard protein/DNA/RNA residues in this entry.

5.5 Carbohydrates [i](#)

There are no carbohydrates in this entry.

5.6 Ligand geometry [i](#)

6 ligands are modelled in this entry.

In the following table, the Counts columns list the number of bonds (or angles) for which Mogul statistics could be retrieved, the number of bonds (or angles) that are observed in the model and the number of bonds (or angles) that are defined in the Chemical Component Dictionary. The Link column lists molecule types, if any, to which the group is linked. The Z score for a bond length (or angle) is the number of standard deviations the observed value is removed from the expected value. A bond length (or angle) with $|Z| > 2$ is considered an outlier worth inspection. RMSZ is the root-mean-square of all Z scores of the bond lengths (or angles).

Mol	Type	Chain	Res	Link	Bond lengths			Bond angles		
					Counts	RMSZ	# Z > 2	Counts	RMSZ	# Z > 2
2	A2G	A	2007[A]	3	14,14,15	0.90	1 (7%)	17,19,21	0.57	0
2	A2G	A	2007[B]	4	14,14,15	0.73	0	17,19,21	0.98	1 (5%)
3	GLA	A	2008[A]	2,5	12,12,12	0.54	0	17,17,17	1.20	3 (17%)
4	GAL	A	2009[B]	2,5	12,12,12	0.80	0	17,17,17	2.15	5 (29%)
5	FUC	A	2010	3,4	9,10,11	0.76	0	13,14,16	0.72	0
6	EDO	A	2011	-	3,3,3	0.32	0	2,2,2	0.22	0

In the following table, the Chirals column lists the number of chiral outliers, the number of chiral centers analysed, the number of these observed in the model and the number defined in the Chemical Component Dictionary. Similar counts are reported in the Torsion and Rings columns. '-' means no outliers of that kind were identified.

Mol	Type	Chain	Res	Link	Chirals	Torsions	Rings
2	A2G	A	2007[A]	3	-	0/6/23/26	0/1/1/1
2	A2G	A	2007[B]	4	-	0/6/23/26	0/1/1/1
3	GLA	A	2008[A]	2,5	-	0/2/22/22	0/1/1/1
4	GAL	A	2009[B]	2,5	-	0/2/22/22	0/1/1/1
5	FUC	A	2010	3,4	-	0/0/17/20	0/1/1/1
6	EDO	A	2011	-	-	0/1/1/1	0/0/0/0

All (1) bond length outliers are listed below:

Mol	Chain	Res	Type	Atoms	Z	Observed(Å)	Ideal(Å)
2	A	2007[A]	A2G	O-C5	2.28	1.48	1.43

All (9) bond angle outliers are listed below:

Mol	Chain	Res	Type	Atoms	Z	Observed($^{\circ}$)	Ideal($^{\circ}$)
4	A	2009[B]	GAL	O3-C3-C2	-3.38	102.46	110.34
2	A	2007[B]	A2G	O-C1-C2	-2.90	107.52	111.52
3	A	2008[A]	GLA	O5-C5-C4	-2.29	105.48	109.69
3	A	2008[A]	GLA	O3-C3-C2	-2.25	105.10	110.34
3	A	2008[A]	GLA	C1-C2-C3	2.29	114.93	110.36
4	A	2009[B]	GAL	C1-C2-C3	2.61	115.57	110.36
4	A	2009[B]	GAL	O1-C1-C2	2.99	117.53	109.02
4	A	2009[B]	GAL	C1-O5-C5	4.06	121.51	113.69
4	A	2009[B]	GAL	O5-C1-C2	4.60	118.58	110.31

There are no chirality outliers.

There are no torsion outliers.

There are no ring outliers.

1 monomer is involved in 1 short contact:

Mol	Chain	Res	Type	Clashes	Symm-Clashes
4	A	2009[B]	GAL	1	0

5.7 Other polymers [i](#)

There are no such residues in this entry.

5.8 Polymer linkage issues [i](#)

There are no chain breaks in this entry.

6 Fit of model and data [i](#)

6.1 Protein, DNA and RNA chains [i](#)

In the following table, the column labelled '#RSRZ> 2' contains the number (and percentage) of RSRZ outliers, followed by percent RSRZ outliers for the chain as percentile scores relative to all X-ray entries and entries of similar resolution. The OWAB column contains the minimum, median, 95th percentile and maximum values of the occupancy-weighted average B-factor per residue. The column labelled 'Q< 0.9' lists the number of (and percentage) of residues with an average occupancy less than 0.9.

Mol	Chain	Analysed	<RSRZ>	#RSRZ>2	OWAB(Å ²)	Q<0.9
1	A	587/599 (97%)	-0.54	9 (1%) 73 69	5, 9, 19, 31	4 (0%)

All (9) RSRZ outliers are listed below:

Mol	Chain	Res	Type	RSRZ
1	A	1007	THR	9.2
1	A	806	VAL	5.7
1	A	1006	HIS	3.8
1	A	507	PRO	3.1
1	A	809	SER	3.0
1	A	422	VAL	2.7
1	A	509	THR	2.2
1	A	421	GLU	2.1
1	A	982	GLN	2.1

6.2 Non-standard residues in protein, DNA, RNA chains [i](#)

There are no non-standard protein/DNA/RNA residues in this entry.

6.3 Carbohydrates [i](#)

There are no carbohydrates in this entry.

6.4 Ligands [i](#)

In the following table, the Atoms column lists the number of modelled atoms in the group and the number defined in the chemical component dictionary. The B-factors column lists the minimum, median, 95th percentile and maximum values of B factors of atoms in the group. The column labelled 'Q< 0.9' lists the number of atoms with occupancy less than 0.9.

Mol	Type	Chain	Res	Atoms	RSCC	RSR	B-factors(\AA^2)	Q<0.9
4	GAL	A	2009[B]	12/12	0.98	0.05	7,8,10,10	12
3	GLA	A	2008[A]	12/12	0.98	0.05	4,7,10,13	12
5	FUC	A	2010	10/11	0.98	0.05	6,7,8,11	0
2	A2G	A	2007[A]	14/15	0.99	0.05	3,5,11,12	14
6	EDO	A	2011	4/4	0.99	0.06	6,6,7,7	0
2	A2G	A	2007[B]	14/15	0.99	0.05	7,7,10,11	14

6.5 Other polymers

There are no such residues in this entry.