



Full wwPDB X-ray Structure Validation Report ⓘ

Oct 31, 2021 – 11:03 PM EDT

PDB ID : 2D7Z
Title : Aspartate Aminotransferase Mutant MAB Complexed with Maleic Acid
Authors : Tanaka, Y.; Nakagawa, N.; Tada, H.; Yano, T.; Masui, R.; Kuramitsu, S.
Deposited on : 2005-11-30
Resolution : 2.65 Å(reported)

This is a Full wwPDB X-ray Structure Validation Report for a publicly released PDB entry.

We welcome your comments at validation@mail.wwpdb.org

A user guide is available at

<https://www.wwpdb.org/validation/2017/XrayValidationReportHelp>

with specific help available everywhere you see the ⓘ symbol.

The following versions of software and data (see [references ⓘ](#)) were used in the production of this report:

MolProbity : 4.02b-467
Mogul : 1.8.5 (274361), CSD as541be (2020)
Xtriage (Phenix) : 1.13
EDS : 2.23.2
Percentile statistics : 20191225.v01 (using entries in the PDB archive December 25th 2019)
Refmac : 5.8.0158
CCP4 : 7.0.044 (Gargrove)
Ideal geometry (proteins) : Engh & Huber (2001)
Ideal geometry (DNA, RNA) : Parkinson et al. (1996)
Validation Pipeline (wwPDB-VP) : 2.23.2

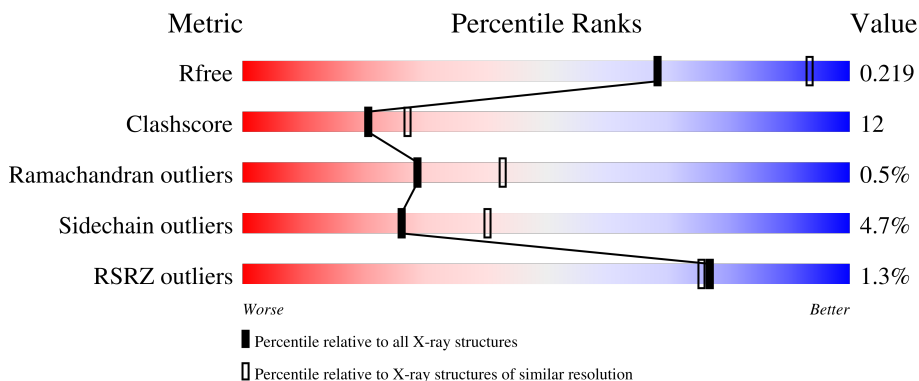
1 Overall quality at a glance

The following experimental techniques were used to determine the structure:

X-RAY DIFFRACTION


The reported resolution of this entry is 2.65 Å.

Percentile scores (ranging between 0-100) for global validation metrics of the entry are shown in the following graphic. The table shows the number of entries on which the scores are based.



Metric	Whole archive (#Entries)	Similar resolution (#Entries, resolution range(Å))
R_{free}	130704	1332 (2.68-2.64)
Clashscore	141614	1374 (2.68-2.64)
Ramachandran outliers	138981	1349 (2.68-2.64)
Sidechain outliers	138945	1349 (2.68-2.64)
RSRZ outliers	127900	1318 (2.68-2.64)

The table below summarises the geometric issues observed across the polymeric chains and their fit to the electron density. The red, orange, yellow and green segments of the lower bar indicate the fraction of residues that contain outliers for ≥ 3 , 2, 1 and 0 types of geometric quality criteria respectively. A grey segment represents the fraction of residues that are not modelled. The numeric value for each fraction is indicated below the corresponding segment, with a dot representing fractions $\leq 5\%$. The upper red bar (where present) indicates the fraction of residues that have poor fit to the electron density. The numeric value is given above the bar.

Mol	Chain	Length	Quality of chain
1	A	396	

2 Entry composition [i](#)

There are 4 unique types of molecules in this entry. The entry contains 3172 atoms, of which 0 are hydrogens and 0 are deuteriums.

In the tables below, the ZeroOcc column contains the number of atoms modelled with zero occupancy, the AltConf column contains the number of residues with at least one atom in alternate conformation and the Trace column contains the number of residues modelled with at most 2 atoms.

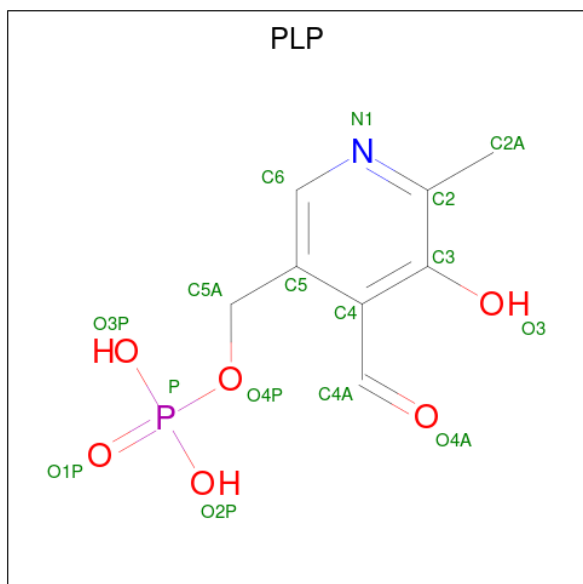
- Molecule 1 is a protein called Aspartate aminotransferase.

Mol	Chain	Residues	Atoms					ZeroOcc	AltConf	Trace
			Total	C	N	O	S			
1	A	396	3064	1931	533	586	14	0	0	0

There are 9 discrepancies between the modelled and reference sequences:

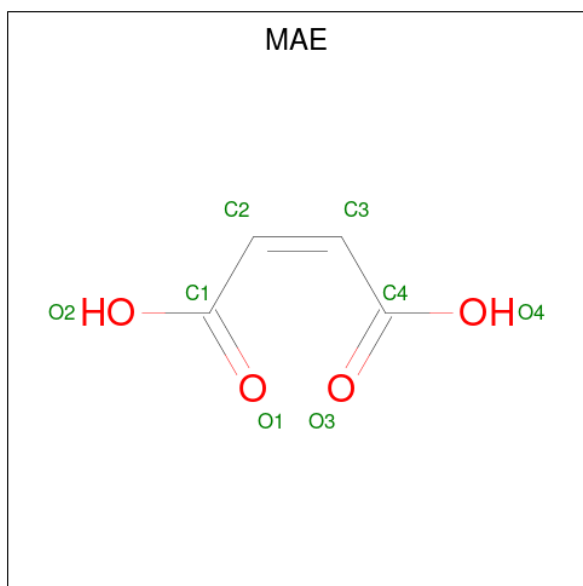
Chain	Residue	Modelled	Actual	Comment	Reference
A	11	THR	ALA	engineered mutation	UNP P00509
A	24	LEU	PHE	engineered mutation	UNP P00509
A	34	ASP	ASN	engineered mutation	UNP P00509
A	37	MET	ILE	engineered mutation	UNP P00509
A	41	ASN	LYS	engineered mutation	UNP P00509
A	139	GLY	SER	engineered mutation	UNP P00509
A	142	THR	ASN	engineered mutation	UNP P00509
A	293	VAL	ALA	engineered mutation	UNP P00509
A	297	SER	ASN	engineered mutation	UNP P00509

- Molecule 2 is PYRIDOXAL-5'-PHOSPHATE (three-letter code: PLP) (formula: C₈H₁₀NO₆P).



Mol	Chain	Residues	Atoms					ZeroOcc	AltConf
			Total	C	N	O	P		
2	A	1	15	8	1	5	1	0	0

- Molecule 3 is MALEIC ACID (three-letter code: MAE) (formula: C₄H₄O₄).



Mol	Chain	Residues	Atoms			ZeroOcc	AltConf
			Total	C	O		
3	A	1	8	4	4	0	0

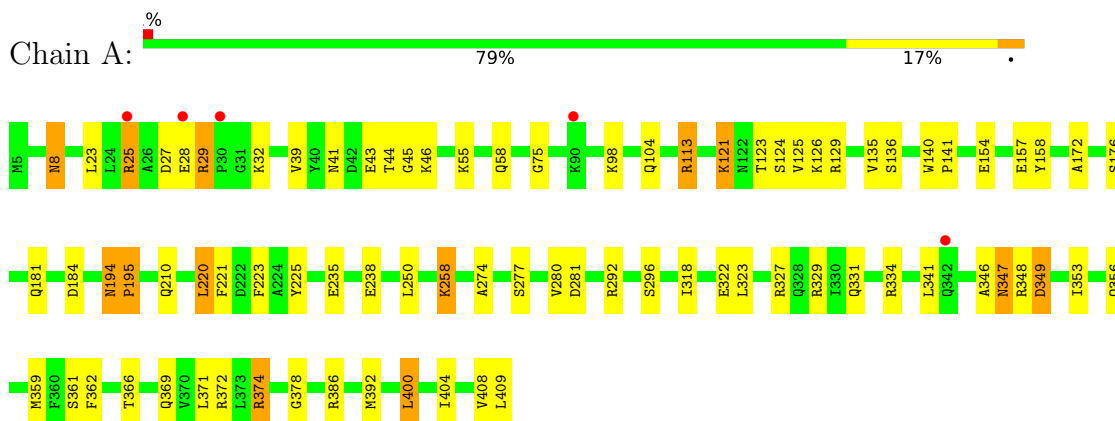
- Molecule 4 is water.

Mol	Chain	Residues	Atoms		ZeroOcc	AltConf
			Total	O		
4	A	85	85	85	0	0

3 Residue-property plots [i](#)

These plots are drawn for all protein, RNA, DNA and oligosaccharide chains in the entry. The first graphic for a chain summarises the proportions of the various outlier classes displayed in the second graphic. The second graphic shows the sequence view annotated by issues in geometry and electron density. Residues are color-coded according to the number of geometric quality criteria for which they contain at least one outlier: green = 0, yellow = 1, orange = 2 and red = 3 or more. A red dot above a residue indicates a poor fit to the electron density ($RSRZ > 2$). Stretches of 2 or more consecutive residues without any outlier are shown as a green connector. Residues present in the sample, but not in the model, are shown in grey.

- Molecule 1: Aspartate aminotransferase



4 Data and refinement statistics

Property	Value	Source
Space group	C 2 2 21	Depositor
Cell constants a, b, c, α , β , γ	157.35Å 85.42Å 78.62Å 90.00° 90.00° 90.00°	Depositor
Resolution (Å)	44.70 – 2.65 44.70 – 2.65	Depositor EDS
% Data completeness (in resolution range)	93.0 (44.70-2.65) 93.1 (44.70-2.65)	Depositor EDS
R_{merge}	(Not available)	Depositor
R_{sym}	(Not available)	Depositor
$\langle I/\sigma(I) \rangle$ ¹	4.28 (at 2.65Å)	Xtrriage
Refinement program	CNS 1.1	Depositor
R, R_{free}	0.172 , 0.219 0.171 , 0.219	Depositor DCC
R_{free} test set	1514 reflections (10.15%)	wwPDB-VP
Wilson B-factor (Å ²)	30.9	Xtrriage
Anisotropy	0.320	Xtrriage
Bulk solvent k_{sol} (e/Å ³), B_{sol} (Å ²)	0.32 , 46.8	EDS
L-test for twinning ²	$\langle L \rangle = 0.49$, $\langle L^2 \rangle = 0.33$	Xtrriage
Estimated twinning fraction	No twinning to report.	Xtrriage
F_o, F_c correlation	0.95	EDS
Total number of atoms	3172	wwPDB-VP
Average B, all atoms (Å ²)	32.0	wwPDB-VP

Xtrriage's analysis on translational NCS is as follows: *The largest off-origin peak in the Patterson function is 4.78% of the height of the origin peak. No significant pseudotranslation is detected.*

¹Intensities estimated from amplitudes.

²Theoretical values of $\langle |L| \rangle$, $\langle L^2 \rangle$ for acentric reflections are 0.5, 0.333 respectively for untwinned datasets, and 0.375, 0.2 for perfectly twinned datasets.

5 Model quality [i](#)

5.1 Standard geometry [i](#)

Bond lengths and bond angles in the following residue types are not validated in this section: PLP, MAE

The Z score for a bond length (or angle) is the number of standard deviations the observed value is removed from the expected value. A bond length (or angle) with $|Z| > 5$ is considered an outlier worth inspection. RMSZ is the root-mean-square of all Z scores of the bond lengths (or angles).

Mol	Chain	Bond lengths		Bond angles	
		RMSZ	# Z >5	RMSZ	# Z >5
1	A	0.34	0/3124	0.57	0/4233

There are no bond length outliers.

There are no bond angle outliers.

There are no chirality outliers.

There are no planarity outliers.

5.2 Too-close contacts [i](#)

In the following table, the Non-H and H(model) columns list the number of non-hydrogen atoms and hydrogen atoms in the chain respectively. The H(added) column lists the number of hydrogen atoms added and optimized by MolProbity. The Clashes column lists the number of clashes within the asymmetric unit, whereas Symm-Clashes lists symmetry-related clashes.

Mol	Chain	Non-H	H(model)	H(added)	Clashes	Symm-Clashes
1	A	3064	0	3011	74	0
2	A	15	0	7	0	0
3	A	8	0	2	1	0
4	A	85	0	0	2	0
All	All	3172	0	3020	75	0

The all-atom clashscore is defined as the number of clashes found per 1000 atoms (including hydrogen atoms). The all-atom clashscore for this structure is 12.

All (75) close contacts within the same asymmetric unit are listed below, sorted by their clash magnitude.

Atom-1	Atom-2	Interatomic distance (Å)	Clash overlap (Å)
1:A:348:ARG:HD3	1:A:349:ASP:H	1.40	0.85
1:A:348:ARG:CD	1:A:349:ASP:H	2.01	0.73
1:A:356:GLN:NE2	1:A:361:SER:HA	2.08	0.67
1:A:374:ARG:HH11	1:A:374:ARG:HB3	1.61	0.66
1:A:181:GLN:O	1:A:184:ASP:HB2	1.96	0.66
1:A:29:ARG:NH1	1:A:378:GLY:N	2.46	0.63
1:A:129:ARG:HG2	1:A:154:GLU:CG	2.29	0.62
1:A:44:THR:HG21	1:A:46:LYS:HE2	1.82	0.61
1:A:327:ARG:HG2	1:A:331:GLN:HE21	1.66	0.60
1:A:27:ASP:OD2	1:A:29:ARG:HD3	2.02	0.60
1:A:98:LYS:NZ	1:A:98:LYS:HB3	2.17	0.60
1:A:172:ALA:O	1:A:176:SER:HB2	2.01	0.60
1:A:113:ARG:HD3	1:A:113:ARG:C	2.25	0.57
1:A:8:ASN:ND2	1:A:8:ASN:H	2.03	0.55
1:A:371:LEU:O	1:A:371:LEU:HD13	2.06	0.55
1:A:348:ARG:HD3	1:A:349:ASP:N	2.18	0.54
1:A:348:ARG:CG	1:A:349:ASP:N	2.71	0.54
1:A:348:ARG:CG	1:A:349:ASP:H	2.20	0.53
1:A:235:GLU:O	1:A:238:GLU:HG3	2.10	0.52
1:A:404:ILE:O	1:A:409:LEU:HG	2.09	0.52
1:A:8:ASN:H	1:A:8:ASN:HD22	1.57	0.51
1:A:194:ASN:HD21	1:A:386:ARG:HH11	1.57	0.51
1:A:8:ASN:HD22	1:A:8:ASN:N	2.07	0.51
1:A:220:LEU:HD12	1:A:220:LEU:C	2.31	0.51
1:A:29:ARG:O	1:A:32:LYS:HG3	2.12	0.50
1:A:356:GLN:HE22	1:A:361:SER:HA	1.77	0.50
1:A:123:THR:OG1	1:A:125:VAL:HG23	2.11	0.50
1:A:318:ILE:O	1:A:322:GLU:HG3	2.12	0.50
1:A:135:VAL:HG22	1:A:136:SER:N	2.26	0.49
1:A:41:ASN:HD22	1:A:45:GLY:C	2.16	0.49
1:A:334:ARG:HD3	1:A:353:ILE:O	2.13	0.48
1:A:274:ALA:HB3	1:A:280:VAL:HB	1.96	0.48
1:A:195:PRO:HB3	1:A:386:ARG:HD3	1.95	0.48
1:A:210:GLN:NE2	1:A:210:GLN:HA	2.28	0.48
1:A:158:TYR:HA	1:A:176:SER:OG	2.14	0.48
1:A:323:LEU:C	1:A:323:LEU:HD23	2.34	0.48
1:A:348:ARG:HG3	1:A:349:ASP:N	2.29	0.47
1:A:29:ARG:NH1	1:A:378:GLY:H	2.12	0.47
1:A:356:GLN:HE22	1:A:361:SER:CA	2.27	0.47
1:A:121:LYS:HD2	4:A:431:HOH:O	2.13	0.47
1:A:28:GLU:O	1:A:29:ARG:C	2.54	0.46
1:A:366:THR:OG1	1:A:369:GLN:HG3	2.15	0.46

Continued on next page...

Continued from previous page...

Atom-1	Atom-2	Interatomic distance (Å)	Clash overlap (Å)
1:A:23:LEU:HD12	1:A:23:LEU:N	2.30	0.46
1:A:250:LEU:HD12	1:A:250:LEU:C	2.36	0.46
1:A:28:GLU:HG3	1:A:29:ARG:N	2.31	0.45
1:A:55:LYS:O	1:A:58:GLN:HB3	2.17	0.45
1:A:113:ARG:HD3	1:A:113:ARG:O	2.17	0.45
1:A:39:VAL:C	1:A:359:MET:HE1	2.37	0.44
1:A:327:ARG:HG2	1:A:331:GLN:NE2	2.31	0.44
1:A:129:ARG:HG2	1:A:154:GLU:HG2	1.98	0.44
1:A:135:VAL:O	1:A:157:GLU:HA	2.17	0.44
1:A:225:TYR:CE1	1:A:258:LYS:HG2	2.53	0.44
1:A:292:ARG:NH1	1:A:296:SER:OG	2.50	0.44
1:A:341:LEU:O	1:A:346:ALA:HB2	2.19	0.43
1:A:400:LEU:HD22	1:A:400:LEU:O	2.19	0.43
1:A:374:ARG:HH11	1:A:374:ARG:CB	2.29	0.43
1:A:98:LYS:HB3	1:A:98:LYS:HZ2	1.83	0.43
1:A:210:GLN:HA	1:A:210:GLN:HE21	1.84	0.43
1:A:372:ARG:HD3	1:A:408:VAL:HG12	2.01	0.43
1:A:25:ARG:HH11	1:A:25:ARG:HG2	1.83	0.42
1:A:374:ARG:HD2	4:A:423:HOH:O	2.18	0.42
1:A:194:ASN:HA	1:A:195:PRO:HA	1.85	0.42
1:A:392:MET:HE2	1:A:400:LEU:HD11	2.02	0.42
1:A:323:LEU:HD23	1:A:323:LEU:O	2.20	0.42
1:A:43:GLU:OE2	1:A:329:ARG:HD2	2.20	0.41
1:A:194:ASN:HD22	1:A:195:PRO:CA	2.33	0.41
1:A:124:SER:O	1:A:126:LYS:HG3	2.19	0.41
1:A:356:GLN:HE22	1:A:361:SER:HB2	1.86	0.41
1:A:140:TRP:HA	1:A:141:PRO:HD2	1.91	0.41
1:A:277:SER:HA	1:A:280:VAL:HG12	2.03	0.41
3:A:414:MAE:O2	3:A:414:MAE:C4	2.68	0.41
1:A:135:VAL:CG2	1:A:136:SER:N	2.84	0.40
1:A:220:LEU:HD12	1:A:221:PHE:N	2.37	0.40
1:A:75:GLY:HA3	1:A:104:GLN:HB3	2.04	0.40
1:A:356:GLN:NE2	1:A:361:SER:CA	2.81	0.40

There are no symmetry-related clashes.

5.3 Torsion angles [i](#)

5.3.1 Protein backbone [i](#)

In the following table, the Percentiles column shows the percent Ramachandran outliers of the chain as a percentile score with respect to all X-ray entries followed by that with respect to entries of similar resolution.

The Analysed column shows the number of residues for which the backbone conformation was analysed, and the total number of residues.

Mol	Chain	Analysed	Favoured	Allowed	Outliers	Percentiles
1	A	394/396 (100%)	374 (95%)	18 (5%)	2 (0%)	29 43

All (2) Ramachandran outliers are listed below:

Mol	Chain	Res	Type
1	A	29	ARG
1	A	347	ASN

5.3.2 Protein sidechains [i](#)

In the following table, the Percentiles column shows the percent sidechain outliers of the chain as a percentile score with respect to all X-ray entries followed by that with respect to entries of similar resolution.

The Analysed column shows the number of residues for which the sidechain conformation was analysed, and the total number of residues.

Mol	Chain	Analysed	Rotameric	Outliers	Percentiles
1	A	321/321 (100%)	306 (95%)	15 (5%)	26 40

All (15) residues with a non-rotameric sidechain are listed below:

Mol	Chain	Res	Type
1	A	8	ASN
1	A	25	ARG
1	A	113	ARG
1	A	121	LYS
1	A	194	ASN
1	A	195	PRO
1	A	220	LEU
1	A	223	PHE
1	A	258	LYS

Continued on next page...

Continued from previous page...

Mol	Chain	Res	Type
1	A	281	ASP
1	A	347	ASN
1	A	349	ASP
1	A	362	PHE
1	A	374	ARG
1	A	400	LEU

Sometimes sidechains can be flipped to improve hydrogen bonding and reduce clashes. All (15) such sidechains are listed below:

Mol	Chain	Res	Type
1	A	8	ASN
1	A	41	ASN
1	A	122	ASN
1	A	148	ASN
1	A	175	ASN
1	A	178	ASN
1	A	194	ASN
1	A	206	GLN
1	A	210	GLN
1	A	226	GLN
1	A	247	HIS
1	A	328	GLN
1	A	331	GLN
1	A	347	ASN
1	A	356	GLN

5.3.3 RNA [i](#)

There are no RNA molecules in this entry.

5.4 Non-standard residues in protein, DNA, RNA chains [i](#)

There are no non-standard protein/DNA/RNA residues in this entry.

5.5 Carbohydrates [i](#)

There are no monosaccharides in this entry.

5.6 Ligand geometry

2 ligands are modelled in this entry.

In the following table, the Counts columns list the number of bonds (or angles) for which Mogul statistics could be retrieved, the number of bonds (or angles) that are observed in the model and the number of bonds (or angles) that are defined in the Chemical Component Dictionary. The Link column lists molecule types, if any, to which the group is linked. The Z score for a bond length (or angle) is the number of standard deviations the observed value is removed from the expected value. A bond length (or angle) with $|Z| > 2$ is considered an outlier worth inspection. RMSZ is the root-mean-square of all Z scores of the bond lengths (or angles).

Mol	Type	Chain	Res	Link	Bond lengths			Bond angles		
					Counts	RMSZ	# Z > 2	Counts	RMSZ	# Z > 2
2	PLP	A	413	1	15,15,16	1.76	4 (26%)	20,22,23	1.97	5 (25%)
3	MAE	A	414	-	1,7,7	1.63	0	2,8,8	0.42	0

In the following table, the Chirals column lists the number of chiral outliers, the number of chiral centers analysed, the number of these observed in the model and the number defined in the Chemical Component Dictionary. Similar counts are reported in the Torsion and Rings columns. '-' means no outliers of that kind were identified.

Mol	Type	Chain	Res	Link	Chirals	Torsions	Rings
2	PLP	A	413	1	-	2/6/6/8	0/1/1/1
3	MAE	A	414	-	-	0/0/5/5	-

All (4) bond length outliers are listed below:

Mol	Chain	Res	Type	Atoms	Z	Observed(Å)	Ideal(Å)
2	A	413	PLP	C5-C4	3.92	1.44	1.40
2	A	413	PLP	C4A-C4	2.52	1.56	1.51
2	A	413	PLP	C2-N1	2.39	1.38	1.33
2	A	413	PLP	P-O3P	-2.25	1.46	1.54

All (5) bond angle outliers are listed below:

Mol	Chain	Res	Type	Atoms	Z	Observed(°)	Ideal(°)
2	A	413	PLP	O4P-C5A-C5	5.21	119.28	109.35
2	A	413	PLP	C2A-C2-C3	4.29	126.18	120.89
2	A	413	PLP	C6-C5-C4	-2.77	115.98	118.16
2	A	413	PLP	C5A-C5-C6	-2.46	115.33	119.37
2	A	413	PLP	C4-C3-C2	2.09	123.17	120.07

There are no chirality outliers.

All (2) torsion outliers are listed below:

Mol	Chain	Res	Type	Atoms
2	A	413	PLP	C4-C5-C5A-O4P
2	A	413	PLP	C6-C5-C5A-O4P

There are no ring outliers.

1 monomer is involved in 1 short contact:

Mol	Chain	Res	Type	Clashes	Symm-Clashes
3	A	414	MAE	1	0

5.7 Other polymers [i](#)

There are no such residues in this entry.

5.8 Polymer linkage issues [i](#)

There are no chain breaks in this entry.

6 Fit of model and data [i](#)

6.1 Protein, DNA and RNA chains [i](#)

In the following table, the column labelled '#RSRZ > 2' contains the number (and percentage) of RSRZ outliers, followed by percent RSRZ outliers for the chain as percentile scores relative to all X-ray entries and entries of similar resolution. The OWAB column contains the minimum, median, 95th percentile and maximum values of the occupancy-weighted average B-factor per residue. The column labelled 'Q < 0.9' lists the number of (and percentage) of residues with an average occupancy less than 0.9.

Mol	Chain	Analysed	<RSRZ>	#RSRZ>2	OWAB(Å ²)	Q<0.9
1	A	396/396 (100%)	-0.52	5 (1%) 77 75	14, 30, 54, 85	0

All (5) RSRZ outliers are listed below:

Mol	Chain	Res	Type	RSRZ
1	A	90	LYS	3.2
1	A	25	ARG	2.3
1	A	28	GLU	2.2
1	A	30	PRO	2.1
1	A	342	GLN	2.1

6.2 Non-standard residues in protein, DNA, RNA chains [i](#)

There are no non-standard protein/DNA/RNA residues in this entry.

6.3 Carbohydrates [i](#)

There are no monosaccharides in this entry.

6.4 Ligands [i](#)

In the following table, the Atoms column lists the number of modelled atoms in the group and the number defined in the chemical component dictionary. The B-factors column lists the minimum, median, 95th percentile and maximum values of B factors of atoms in the group. The column labelled 'Q < 0.9' lists the number of atoms with occupancy less than 0.9.

Mol	Type	Chain	Res	Atoms	RSCC	RSR	B-factors(Å ²)	Q<0.9
3	MAE	A	414	8/8	0.92	0.20	45,50,58,59	0
2	PLP	A	413	15/16	0.98	0.15	22,26,29,33	0

6.5 Other polymers [i](#)

There are no such residues in this entry.