



Full wwPDB X-ray Structure Validation Report ⓘ

May 16, 2020 – 09:09 pm BST

PDB ID : 4D8T
Title : Crystal structure of D-Cysteine desulphydrase from Salmonella typhimurium at 2.2 Å resolution
Authors : Bharath, S.R.; Shveta, B.; Rajesh, K.H.; Savithri, H.S.; Murthy, M.R.N.
Deposited on : 2012-01-11
Resolution : 2.28 Å(reported)

This is a Full wwPDB X-ray Structure Validation Report for a publicly released PDB entry.

We welcome your comments at validation@mail.wwpdb.org

A user guide is available at

<https://www.wwpdb.org/validation/2017/XrayValidationReportHelp>

with specific help available everywhere you see the ⓘ symbol.

The following versions of software and data (see [references ⓘ](#)) were used in the production of this report:

MolProbity : 4.02b-467
Mogul : 1.8.5 (274361), CSD as541be (2020)
Xtriage (Phenix) : 1.13
EDS : 2.11
Percentile statistics : 20191225.v01 (using entries in the PDB archive December 25th 2019)
Refmac : 5.8.0158
CCP4 : 7.0.044 (Gargrove)
Ideal geometry (proteins) : Engh & Huber (2001)
Ideal geometry (DNA, RNA) : Parkinson et al. (1996)
Validation Pipeline (wwPDB-VP) : 2.11

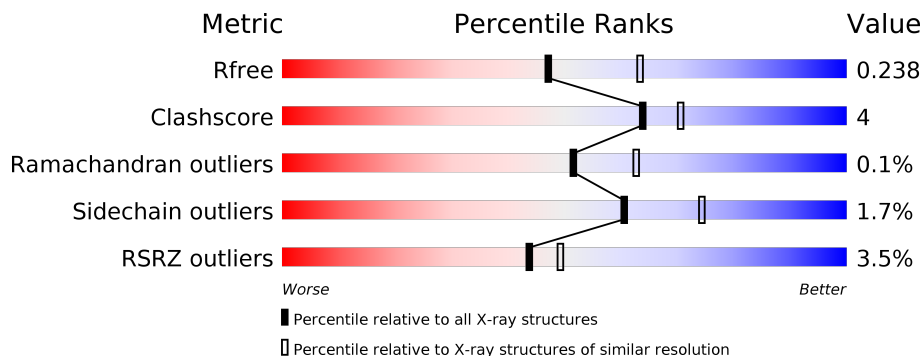
1 Overall quality at a glance i

The following experimental techniques were used to determine the structure:

X-RAY DIFFRACTION

The reported resolution of this entry is 2.28 Å.

Percentile scores (ranging between 0-100) for global validation metrics of the entry are shown in the following graphic. The table shows the number of entries on which the scores are based.



Metric	Whole archive (#Entries)	Similar resolution (#Entries, resolution range(Å))
R_{free}	130704	6980 (2.30-2.26)
Clashscore	141614	7711 (2.30-2.26)
Ramachandran outliers	138981	7597 (2.30-2.26)
Sidechain outliers	138945	7598 (2.30-2.26)
RSRZ outliers	127900	6849 (2.30-2.26)

The table below summarises the geometric issues observed across the polymeric chains and their fit to the electron density. The red, orange, yellow and green segments on the lower bar indicate the fraction of residues that contain outliers for ≥ 3 , 2, 1 and 0 types of geometric quality criteria respectively. A grey segment represents the fraction of residues that are not modelled. The numeric value for each fraction is indicated below the corresponding segment, with a dot representing fractions $\leq 5\%$. The upper red bar (where present) indicates the fraction of residues that have poor fit to the electron density. The numeric value is given above the bar.

Mol	Chain	Length	Quality of chain
1	A	342	<div style="display: flex; align-items: center;"> <div style="width: 2%; height: 10px; background-color: red; margin-right: 5px;"></div> <div style="width: 86%; height: 10px; background-color: green; margin-right: 5px;"></div> <div style="width: 10%; height: 10px; background-color: yellow; margin-right: 5px;"></div> <div style="width: 2%; height: 10px; background-color: grey;"></div> </div> <p style="text-align: center; margin-top: 5px;">86% 10% •</p>
1	B	342	<div style="display: flex; align-items: center;"> <div style="width: 5%; height: 10px; background-color: red; margin-right: 5px;"></div> <div style="width: 86%; height: 10px; background-color: green; margin-right: 5px;"></div> <div style="width: 7%; height: 10px; background-color: yellow; margin-right: 5px;"></div> <div style="width: 2%; height: 10px; background-color: grey;"></div> </div> <p style="text-align: center; margin-top: 5px;">86% 7% 7%</p>
1	C	342	<div style="display: flex; align-items: center;"> <div style="width: 4%; height: 10px; background-color: red; margin-right: 5px;"></div> <div style="width: 85%; height: 10px; background-color: green; margin-right: 5px;"></div> <div style="width: 9%; height: 10px; background-color: yellow; margin-right: 5px;"></div> <div style="width: 2%; height: 10px; background-color: grey;"></div> </div> <p style="text-align: center; margin-top: 5px;">85% 9% • 6%</p>
1	D	342	<div style="display: flex; align-items: center;"> <div style="width: 0%; height: 10px; background-color: red; margin-right: 5px;"></div> <div style="width: 88%; height: 10px; background-color: green; margin-right: 5px;"></div> <div style="width: 8%; height: 10px; background-color: yellow; margin-right: 5px;"></div> <div style="width: 2%; height: 10px; background-color: grey;"></div> </div> <p style="text-align: center; margin-top: 5px;">88% 8% •</p>

2 Entry composition i

There are 5 unique types of molecules in this entry. The entry contains 10235 atoms, of which 0 are hydrogens and 0 are deuteriums.

In the tables below, the ZeroOcc column contains the number of atoms modelled with zero occupancy, the AltConf column contains the number of residues with at least one atom in alternate conformation and the Trace column contains the number of residues modelled with at most 2 atoms.

- Molecule 1 is a protein called D-cysteine desulfhydrase.

Mol	Chain	Residues	Atoms						ZeroOcc	AltConf	Trace
			Total	C	N	O	P	S			
1	A	328	Total 2468	C 1571	N 418	O 469	P 1	S 9	0	1	0
1	B	318	Total 2364	C 1507	N 396	O 451	P 1	S 9	6	1	0
1	C	323	Total 2436	C 1549	N 414	O 463	P 1	S 9	0	4	0
1	D	328	Total 2451	C 1565	N 412	O 464	P 1	S 9	0	1	0

There are 56 discrepancies between the modelled and reference sequences:

Chain	Residue	Modelled	Actual	Comment	Reference
A	-13	MET	-	EXPRESSION TAG	UNP Q8ZNT7
A	-12	ARG	-	EXPRESSION TAG	UNP Q8ZNT7
A	-11	GLY	-	EXPRESSION TAG	UNP Q8ZNT7
A	-10	SER	-	EXPRESSION TAG	UNP Q8ZNT7
A	-9	HIS	-	EXPRESSION TAG	UNP Q8ZNT7
A	-8	HIS	-	EXPRESSION TAG	UNP Q8ZNT7
A	-7	HIS	-	EXPRESSION TAG	UNP Q8ZNT7
A	-6	HIS	-	EXPRESSION TAG	UNP Q8ZNT7
A	-5	HIS	-	EXPRESSION TAG	UNP Q8ZNT7
A	-4	HIS	-	EXPRESSION TAG	UNP Q8ZNT7
A	-3	GLY	-	EXPRESSION TAG	UNP Q8ZNT7
A	-2	MET	-	EXPRESSION TAG	UNP Q8ZNT7
A	-1	ALA	-	EXPRESSION TAG	UNP Q8ZNT7
A	0	SER	-	EXPRESSION TAG	UNP Q8ZNT7
B	-13	MET	-	EXPRESSION TAG	UNP Q8ZNT7
B	-12	ARG	-	EXPRESSION TAG	UNP Q8ZNT7
B	-11	GLY	-	EXPRESSION TAG	UNP Q8ZNT7
B	-10	SER	-	EXPRESSION TAG	UNP Q8ZNT7
B	-9	HIS	-	EXPRESSION TAG	UNP Q8ZNT7
B	-8	HIS	-	EXPRESSION TAG	UNP Q8ZNT7
B	-7	HIS	-	EXPRESSION TAG	UNP Q8ZNT7

Continued on next page...

Continued from previous page...

Chain	Residue	Modelled	Actual	Comment	Reference
B	-6	HIS	-	EXPRESSION TAG	UNP Q8ZNT7
B	-5	HIS	-	EXPRESSION TAG	UNP Q8ZNT7
B	-4	HIS	-	EXPRESSION TAG	UNP Q8ZNT7
B	-3	GLY	-	EXPRESSION TAG	UNP Q8ZNT7
B	-2	MET	-	EXPRESSION TAG	UNP Q8ZNT7
B	-1	ALA	-	EXPRESSION TAG	UNP Q8ZNT7
B	0	SER	-	EXPRESSION TAG	UNP Q8ZNT7
C	-13	MET	-	EXPRESSION TAG	UNP Q8ZNT7
C	-12	ARG	-	EXPRESSION TAG	UNP Q8ZNT7
C	-11	GLY	-	EXPRESSION TAG	UNP Q8ZNT7
C	-10	SER	-	EXPRESSION TAG	UNP Q8ZNT7
C	-9	HIS	-	EXPRESSION TAG	UNP Q8ZNT7
C	-8	HIS	-	EXPRESSION TAG	UNP Q8ZNT7
C	-7	HIS	-	EXPRESSION TAG	UNP Q8ZNT7
C	-6	HIS	-	EXPRESSION TAG	UNP Q8ZNT7
C	-5	HIS	-	EXPRESSION TAG	UNP Q8ZNT7
C	-4	HIS	-	EXPRESSION TAG	UNP Q8ZNT7
C	-3	GLY	-	EXPRESSION TAG	UNP Q8ZNT7
C	-2	MET	-	EXPRESSION TAG	UNP Q8ZNT7
C	-1	ALA	-	EXPRESSION TAG	UNP Q8ZNT7
C	0	SER	-	EXPRESSION TAG	UNP Q8ZNT7
D	-13	MET	-	EXPRESSION TAG	UNP Q8ZNT7
D	-12	ARG	-	EXPRESSION TAG	UNP Q8ZNT7
D	-11	GLY	-	EXPRESSION TAG	UNP Q8ZNT7
D	-10	SER	-	EXPRESSION TAG	UNP Q8ZNT7
D	-9	HIS	-	EXPRESSION TAG	UNP Q8ZNT7
D	-8	HIS	-	EXPRESSION TAG	UNP Q8ZNT7
D	-7	HIS	-	EXPRESSION TAG	UNP Q8ZNT7
D	-6	HIS	-	EXPRESSION TAG	UNP Q8ZNT7
D	-5	HIS	-	EXPRESSION TAG	UNP Q8ZNT7
D	-4	HIS	-	EXPRESSION TAG	UNP Q8ZNT7
D	-3	GLY	-	EXPRESSION TAG	UNP Q8ZNT7
D	-2	MET	-	EXPRESSION TAG	UNP Q8ZNT7
D	-1	ALA	-	EXPRESSION TAG	UNP Q8ZNT7
D	0	SER	-	EXPRESSION TAG	UNP Q8ZNT7

- Molecule 2 is SULFATE ION (three-letter code: SO4) (formula: O₄S).

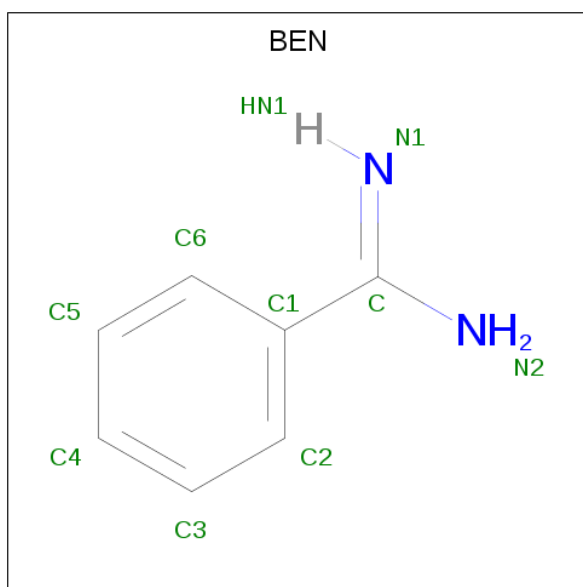


Mol	Chain	Residues	Atoms			ZeroOcc	AltConf
2	A	1	Total	O	S	0	0
			5	4	1		
2	B	1	Total	O	S	0	0
			5	4	1		
2	C	1	Total	O	S	0	0
			5	4	1		
2	D	1	Total	O	S	0	0
			5	4	1		

- Molecule 3 is CHLORIDE ION (three-letter code: CL) (formula: Cl).

Mol	Chain	Residues	Atoms		ZeroOcc	AltConf
3	A	1	Total	Cl	0	0
			1	1		

- Molecule 4 is BENZAMIDINE (three-letter code: BEN) (formula: C₇H₈N₂).



Mol	Chain	Residues	Atoms	ZeroOcc	AltConf
4	A	1	Total C N 9 7 2	0	0
4	B	1	Total C N 9 7 2	0	0
4	B	1	Total C N 9 7 2	0	0
4	C	1	Total C N 9 7 2	0	0
4	D	1	Total C N 9 7 2	0	0

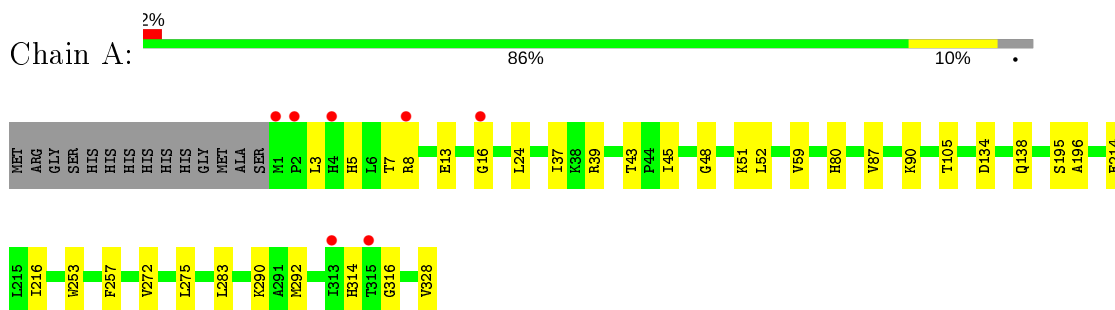
- Molecule 5 is water.

Mol	Chain	Residues	Atoms	ZeroOcc	AltConf
5	A	143	Total O 143 143	0	0
5	B	90	Total O 90 90	0	0
5	C	91	Total O 91 91	0	0
5	D	126	Total O 126 126	0	0

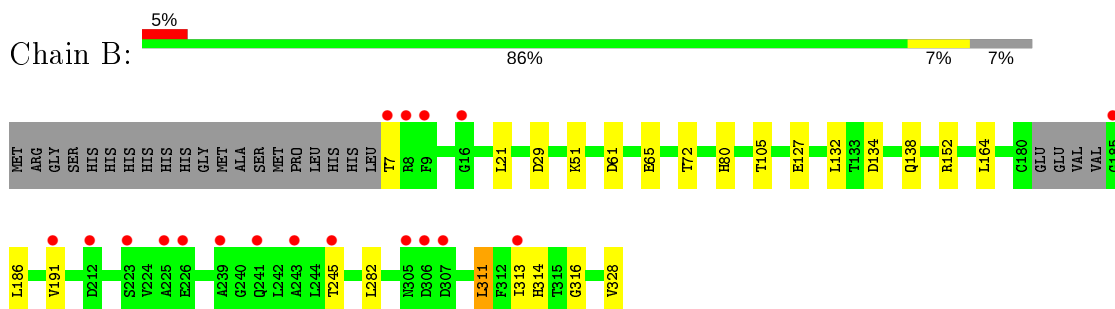
3 Residue-property plots [i](#)

These plots are drawn for all protein, RNA and DNA chains in the entry. The first graphic for a chain summarises the proportions of the various outlier classes displayed in the second graphic. The second graphic shows the sequence view annotated by issues in geometry and electron density. Residues are color-coded according to the number of geometric quality criteria for which they contain at least one outlier: green = 0, yellow = 1, orange = 2 and red = 3 or more. A red dot above a residue indicates a poor fit to the electron density ($RSRZ > 2$). Stretches of 2 or more consecutive residues without any outlier are shown as a green connector. Residues present in the sample, but not in the model, are shown in grey.

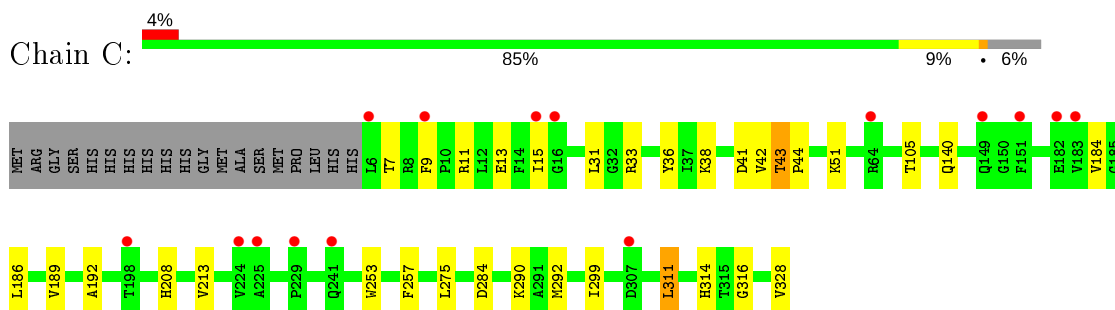
- Molecule 1: D-cysteine desulfhydrase



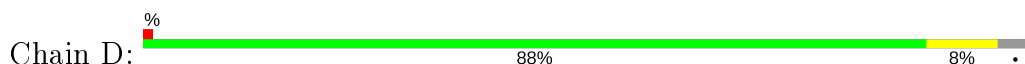
- Molecule 1: D-cysteine desulfhydrase

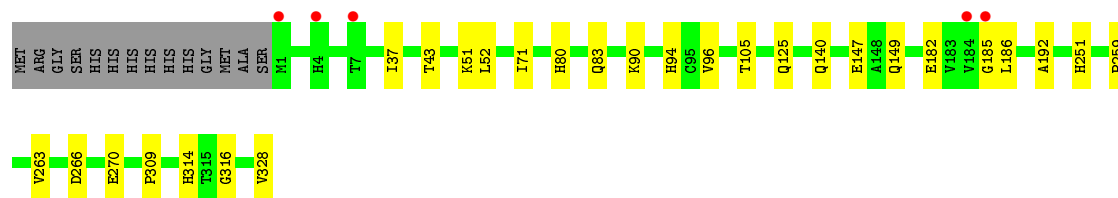


- Molecule 1: D-cysteine desulfhydrase



- Molecule 1: D-cysteine desulfhydrase





4 Data and refinement statistics

Property	Value	Source
Space group	P 1 21 1	Depositor
Cell constants a, b, c, α , β , γ	66.48Å 165.45Å 69.21Å 90.00° 119.01° 90.00°	Depositor
Resolution (Å)	29.19 – 2.28 29.20 – 2.28	Depositor EDS
% Data completeness (in resolution range)	97.6 (29.19-2.28) 97.6 (29.20-2.28)	Depositor EDS
R_{merge}	0.07	Depositor
R_{sym}	(Not available)	Depositor
$\langle I/\sigma(I) \rangle$ ¹	2.53 (at 2.29Å)	Xtriage
Refinement program	REFMAC 5.6.0117	Depositor
R, R_{free}	0.189 , 0.242 0.186 , 0.238	Depositor DCC
R_{free} test set	2926 reflections (5.07%)	wwPDB-VP
Wilson B-factor (Å ²)	33.5	Xtriage
Anisotropy	0.090	Xtriage
Bulk solvent k_{sol} (e/Å ³), B_{sol} (Å ²)	0.37 , 35.7	EDS
L-test for twinning ²	$\langle L \rangle = 0.48$, $\langle L^2 \rangle = 0.32$	Xtriage
Estimated twinning fraction	0.011 for l,k,-h-l 0.011 for -h-l,k,h 0.029 for h,-k,-h-l 0.028 for l,-k,h 0.044 for -h-l,-k,l	Xtriage
F_o, F_c correlation	0.95	EDS
Total number of atoms	10235	wwPDB-VP
Average B, all atoms (Å ²)	33.0	wwPDB-VP

Xtriage's analysis on translational NCS is as follows: *The largest off-origin peak in the Patterson function is 3.75% of the height of the origin peak. No significant pseudotranslation is detected.*

¹ Intensities estimated from amplitudes.

² Theoretical values of $\langle |L| \rangle$, $\langle L^2 \rangle$ for acentric reflections are 0.5, 0.333 respectively for untwinned datasets, and 0.375, 0.2 for perfectly twinned datasets.

5 Model quality [i](#)

5.1 Standard geometry [i](#)

Bond lengths and bond angles in the following residue types are not validated in this section: LLP, BEN, SO4, CL

The Z score for a bond length (or angle) is the number of standard deviations the observed value is removed from the expected value. A bond length (or angle) with $|Z| > 5$ is considered an outlier worth inspection. RMSZ is the root-mean-square of all Z scores of the bond lengths (or angles).

Mol	Chain	Bond lengths		Bond angles	
		RMSZ	# $ Z > 5$	RMSZ	# $ Z > 5$
1	A	0.43	1/2494 (0.0%)	0.56	0/3399
1	B	0.44	0/2386	0.55	0/3252
1	C	0.41	1/2468 (0.0%)	0.54	0/3362
1	D	0.43	0/2477	0.56	0/3377
All	All	0.43	2/9825 (0.0%)	0.55	0/13390

All (2) bond length outliers are listed below:

Mol	Chain	Res	Type	Atoms	Z	Observed(Å)	Ideal(Å)
1	C	253	TRP	CD2-CE2	5.31	1.47	1.41
1	A	253	TRP	CD2-CE2	5.08	1.47	1.41

There are no bond angle outliers.

There are no chirality outliers.

There are no planarity outliers.

5.2 Too-close contacts [i](#)

In the following table, the Non-H and H(model) columns list the number of non-hydrogen atoms and hydrogen atoms in the chain respectively. The H(added) column lists the number of hydrogen atoms added and optimized by MolProbity. The Clashes column lists the number of clashes within the asymmetric unit, whereas Symm-Clashes lists symmetry related clashes.

Mol	Chain	Non-H	H(model)	H(added)	Clashes	Symm-Clashes
1	A	2468	0	2472	21	0
1	B	2364	0	2357	18	0
1	C	2436	0	2444	26	0
1	D	2451	0	2453	18	0
2	A	5	0	0	0	0

Continued on next page...

Continued from previous page...

Mol	Chain	Non-H	H(model)	H(added)	Clashes	Symm-Clashes
2	B	5	0	0	0	0
2	C	5	0	0	0	0
2	D	5	0	0	0	0
3	A	1	0	0	0	0
4	A	9	0	7	0	0
4	B	18	0	14	0	0
4	C	9	0	7	0	0
4	D	9	0	7	0	0
5	A	143	0	0	1	0
5	B	90	0	0	0	0
5	C	91	0	0	1	0
5	D	126	0	0	2	0
All	All	10235	0	9761	82	0

The all-atom clashscore is defined as the number of clashes found per 1000 atoms (including hydrogen atoms). The all-atom clashscore for this structure is 4.

All (82) close contacts within the same asymmetric unit are listed below, sorted by their clash magnitude.

Atom-1	Atom-2	Interatomic distance (Å)	Clash overlap (Å)
1:C:33[B]:ARG:HG3	1:C:33[B]:ARG:HH11	1.15	1.08
1:C:33[B]:ARG:CG	1:C:33[B]:ARG:HH11	1.71	1.03
1:B:105:THR:OG1	1:B:328:VAL:HG12	1.77	0.84
1:C:33[B]:ARG:HG3	1:C:33[B]:ARG:NH1	1.86	0.83
1:C:105:THR:OG1	1:C:328:VAL:HG12	1.81	0.81
1:D:105:THR:OG1	1:D:328:VAL:HG12	1.82	0.79
1:D:90[B]:LYS:NZ	1:D:90[B]:LYS:HB2	2.00	0.75
1:C:42:VAL:O	1:C:42:VAL:HG12	1.90	0.71
1:C:33[B]:ARG:CB	1:C:33[B]:ARG:HH11	2.04	0.70
1:A:134:ASP:H	1:A:138:GLN:NE2	1.91	0.69
1:C:186:LEU:HD11	1:C:311:LEU:HD12	1.80	0.63
1:A:105:THR:OG1	1:A:328:VAL:HG12	1.99	0.62
1:C:43:THR:HG22	1:C:44:PRO:HD2	1.81	0.62
1:C:314:HIS:HD2	1:C:316:GLY:H	1.49	0.60
1:D:185:GLY:O	1:D:309:PRO:HD2	2.02	0.60
1:A:314:HIS:HD2	1:A:316:GLY:H	1.48	0.59
1:D:90[B]:LYS:HZ3	1:D:90[B]:LYS:HB2	1.67	0.59
1:B:314:HIS:HD2	1:B:316:GLY:H	1.51	0.57
1:C:33[B]:ARG:CG	1:C:33[B]:ARG:NH1	2.44	0.55
1:A:13:GLU:OE2	1:A:16:GLY:HA2	2.07	0.55
1:D:314:HIS:HD2	1:D:316:GLY:H	1.55	0.54

Continued on next page...

Continued from previous page...

Atom-1	Atom-2	Interatomic distance (Å)	Clash overlap (Å)
1:D:90[B]:LYS:HZ2	1:D:90[B]:LYS:HB2	1.73	0.54
1:A:90:LYS:NZ	5:A:636:HOH:O	2.40	0.54
1:C:15:ILE:HG12	1:C:43:THR:CG2	2.38	0.53
1:A:272:VAL:HG22	1:A:283:LEU:HB2	1.90	0.52
1:D:51:LLP:HE3	1:D:80:HIS:HB2	1.91	0.52
1:A:105:THR:CB	1:A:328:VAL:HG12	2.39	0.52
1:C:257:PHE:HA	1:C:290:LYS:HD3	1.92	0.52
1:A:51:LLP:HE3	1:A:80:HIS:HB2	1.90	0.52
1:C:189:VAL:HG23	1:C:213:VAL:HG11	1.92	0.51
1:C:42:VAL:O	1:C:42:VAL:CG1	2.58	0.49
1:A:5:HIS:O	1:A:8:ARG:HG2	2.12	0.49
1:C:11:ARG:HD2	5:C:511:HOH:O	2.13	0.49
1:D:266:ASP:O	1:D:270:GLU:HG2	2.13	0.49
1:D:251:HIS:HD2	5:D:619:HOH:O	1.97	0.48
1:A:314:HIS:CD2	1:A:316:GLY:H	2.30	0.48
1:A:257:PHE:HA	1:A:290:LYS:HD3	1.96	0.48
1:C:51:LLP:H6	1:C:192:ALA:HB3	1.96	0.48
1:D:94:HIS:HE1	1:D:125:GLN:HE21	1.61	0.48
1:C:15:ILE:HG12	1:C:43:THR:HG21	1.96	0.47
1:D:259:PRO:HG2	1:D:263:VAL:HG11	1.95	0.47
1:A:275:LEU:HD13	1:A:292:MET:HG2	1.97	0.47
1:C:41:ASP:HB3	1:C:316:GLY:HA2	1.97	0.47
1:D:51:LLP:H6	1:D:192:ALA:HB3	1.97	0.46
1:C:314:HIS:CD2	1:C:316:GLY:H	2.30	0.46
1:C:275:LEU:HD13	1:C:292:MET:HG2	1.97	0.46
1:B:186:LEU:HD11	1:B:311:LEU:HB2	1.98	0.46
1:D:71:ILE:HG12	1:D:96:VAL:HB	1.98	0.46
1:A:43:THR:OG1	1:A:48:GLY:HA2	2.17	0.45
1:C:33[B]:ARG:CB	1:C:33[B]:ARG:NH1	2.75	0.45
1:C:7:THR:HG23	1:C:9:PHE:HD1	1.82	0.45
1:B:51:LLP:HE3	1:B:80:HIS:HB2	1.99	0.45
1:A:134:ASP:H	1:A:138:GLN:HE21	1.64	0.45
1:B:72:THR:OG1	1:B:80:HIS:HE1	2.00	0.44
1:D:94:HIS:HD2	5:D:538:HOH:O	2.00	0.44
1:A:59:VAL:HG21	1:A:87:VAL:HG11	1.99	0.44
1:B:61:ASP:O	1:B:65:GLU:HG3	2.17	0.44
1:C:105:THR:HG1	1:C:328:VAL:HG12	1.82	0.44
1:B:282:LEU:O	1:B:314:HIS:HE1	2.00	0.44
1:A:195:SER:O	1:A:196:ALA:HB3	2.18	0.44
1:B:105:THR:HG1	1:B:328:VAL:HG12	1.80	0.44
1:A:105:THR:HB	1:A:328:VAL:HG12	1.99	0.43

Continued on next page...

Continued from previous page...

Atom-1	Atom-2	Interatomic distance (Å)	Clash overlap (Å)
1:B:132:LEU:HA	1:B:138:GLN:HE22	1.81	0.43
1:B:152:ARG:HH11	1:B:152:ARG:HB3	1.81	0.43
1:D:52:LEU:HB2	1:D:83:GLN:HE21	1.83	0.43
1:B:328:VAL:HG13	1:D:149:GLN:NE2	2.33	0.43
1:C:38:LYS:HB2	1:C:311:LEU:HD21	2.00	0.43
1:C:36:TYR:CE1	1:C:184:VAL:HG21	2.53	0.43
1:A:45:ILE:HD12	1:A:52:LEU:HD11	2.01	0.42
1:B:191:VAL:HG23	1:B:313:ILE:HB	2.01	0.42
1:A:37:ILE:HG12	1:A:39:ARG:HD2	2.02	0.42
1:B:21:LEU:HD11	1:B:311:LEU:HD21	2.02	0.42
1:D:94:HIS:HE1	1:D:125:GLN:NE2	2.17	0.42
1:A:214:GLU:CD	1:A:216:ILE:HD11	2.41	0.42
1:B:134:ASP:H	1:B:138:GLN:NE2	2.19	0.41
1:B:105:THR:CB	1:B:328:VAL:HG12	2.49	0.41
1:B:314:HIS:CD2	1:B:316:GLY:H	2.36	0.41
1:B:282:LEU:O	1:B:314:HIS:CE1	2.74	0.40
1:D:37:ILE:HD11	1:D:314:HIS:HB2	2.03	0.40
1:A:24:LEU:HD21	1:A:37:ILE:HG21	2.03	0.40
1:C:31:LEU:HD13	1:C:299:ILE:HD12	2.02	0.40
1:B:61:ASP:HB2	1:B:164:LEU:HD21	2.02	0.40

There are no symmetry-related clashes.

5.3 Torsion angles [i](#)

5.3.1 Protein backbone [i](#)

In the following table, the Percentiles column shows the percent Ramachandran outliers of the chain as a percentile score with respect to all X-ray entries followed by that with respect to entries of similar resolution.

The Analysed column shows the number of residues for which the backbone conformation was analysed, and the total number of residues.

Mol	Chain	Analysed	Favoured	Allowed	Outliers	Percentiles	
1	A	326/342 (95%)	317 (97%)	9 (3%)	0	100	100
1	B	314/342 (92%)	305 (97%)	9 (3%)	0	100	100
1	C	324/342 (95%)	316 (98%)	8 (2%)	0	100	100
1	D	326/342 (95%)	315 (97%)	10 (3%)	1 (0%)	41	49
All	All	1290/1368 (94%)	1253 (97%)	36 (3%)	1 (0%)	51	63

All (1) Ramachandran outliers are listed below:

Mol	Chain	Res	Type
1	D	182	GLU

5.3.2 Protein sidechains [i](#)

In the following table, the Percentiles column shows the percent sidechain outliers of the chain as a percentile score with respect to all X-ray entries followed by that with respect to entries of similar resolution.

The Analysed column shows the number of residues for which the sidechain conformation was analysed, and the total number of residues.

Mol	Chain	Analysed	Rotameric	Outliers	Percentiles	
1	A	253/266 (95%)	251 (99%)	2 (1%)	81	90
1	B	240/266 (90%)	235 (98%)	5 (2%)	53	68
1	C	250/266 (94%)	244 (98%)	6 (2%)	49	63
1	D	249/266 (94%)	245 (98%)	4 (2%)	62	76
All	All	992/1064 (93%)	975 (98%)	17 (2%)	60	74

All (17) residues with a non-rotameric sidechain are listed below:

Mol	Chain	Res	Type
1	A	3	LEU
1	A	7	THR
1	B	7	THR
1	B	29	ASP
1	B	127	GLU
1	B	245	THR
1	B	311	LEU
1	C	13	GLU
1	C	43	THR
1	C	140	GLN
1	C	208	HIS
1	C	284	ASP
1	C	311	LEU
1	D	43	THR
1	D	140	GLN
1	D	147	GLU
1	D	186	LEU

Some sidechains can be flipped to improve hydrogen bonding and reduce clashes. All (29) such

sidechains are listed below:

Mol	Chain	Res	Type
1	A	83	GLN
1	A	138	GLN
1	A	208	HIS
1	A	314	HIS
1	A	325	HIS
1	B	80	HIS
1	B	83	GLN
1	B	138	GLN
1	B	314	HIS
1	B	325	HIS
1	C	80	HIS
1	C	83	GLN
1	C	125	GLN
1	C	138	GLN
1	C	178	GLN
1	C	314	HIS
1	C	325	HIS
1	D	80	HIS
1	D	83	GLN
1	D	94	HIS
1	D	125	GLN
1	D	138	GLN
1	D	140	GLN
1	D	149	GLN
1	D	178	GLN
1	D	208	HIS
1	D	251	HIS
1	D	314	HIS
1	D	325	HIS

5.3.3 RNA [i](#)

There are no RNA molecules in this entry.

5.4 Non-standard residues in protein, DNA, RNA chains [i](#)

4 non-standard protein/DNA/RNA residues are modelled in this entry.

In the following table, the Counts columns list the number of bonds (or angles) for which Mogul statistics could be retrieved, the number of bonds (or angles) that are observed in the model and the number of bonds (or angles) that are defined in the Chemical Component Dictionary. The

Link column lists molecule types, if any, to which the group is linked. The Z score for a bond length (or angle) is the number of standard deviations the observed value is removed from the expected value. A bond length (or angle) with $|Z| > 2$ is considered an outlier worth inspection. RMSZ is the root-mean-square of all Z scores of the bond lengths (or angles).

Mol	Type	Chain	Res	Link	Bond lengths			Bond angles		
					Counts	RMSZ	# Z > 2	Counts	RMSZ	# Z > 2
1	LLP	D	51	1	23,24,25	0.76	0	25,32,34	1.07	1 (4%)
1	LLP	C	51	1	23,24,25	0.71	0	25,32,34	1.00	0
1	LLP	B	51	1	23,24,25	0.90	1 (4%)	25,32,34	1.03	1 (4%)
1	LLP	A	51	1	23,24,25	0.82	0	25,32,34	1.06	2 (8%)

In the following table, the Chirals column lists the number of chiral outliers, the number of chiral centers analysed, the number of these observed in the model and the number defined in the Chemical Component Dictionary. Similar counts are reported in the Torsion and Rings columns. '-' means no outliers of that kind were identified.

Mol	Type	Chain	Res	Link	Chirals	Torsions	Rings
1	LLP	D	51	1	-	2/16/17/19	0/1/1/1
1	LLP	C	51	1	-	1/16/17/19	0/1/1/1
1	LLP	B	51	1	-	1/16/17/19	0/1/1/1
1	LLP	A	51	1	-	2/16/17/19	0/1/1/1

All (1) bond length outliers are listed below:

Mol	Chain	Res	Type	Atoms	Z	Observed(Å)	Ideal(Å)
1	B	51	LLP	C3-C2	-2.74	1.38	1.40

All (4) bond angle outliers are listed below:

Mol	Chain	Res	Type	Atoms	Z	Observed(°)	Ideal(°)
1	B	51	LLP	OP4-C5'-C5	2.76	114.60	109.35
1	D	51	LLP	C5-C6-N1	-2.06	120.38	123.82
1	A	51	LLP	C5-C6-N1	-2.03	120.43	123.82
1	A	51	LLP	OP4-C5'-C5	2.02	113.20	109.35

There are no chirality outliers.

All (6) torsion outliers are listed below:

Mol	Chain	Res	Type	Atoms
1	A	51	LLP	C4-C4'-NZ-CE
1	D	51	LLP	C4-C4'-NZ-CE

Continued on next page...

Continued from previous page...

Mol	Chain	Res	Type	Atoms
1	C	51	LLP	C3-C4-C4'-NZ
1	B	51	LLP	C3-C4-C4'-NZ
1	D	51	LLP	CA-CB-CG-CD
1	A	51	LLP	CE-CD-CG-CB

There are no ring outliers.

4 monomers are involved in 5 short contacts:

Mol	Chain	Res	Type	Clashes	Symm-Clashes
1	D	51	LLP	2	0
1	C	51	LLP	1	0
1	B	51	LLP	1	0
1	A	51	LLP	1	0

5.5 Carbohydrates [i](#)

There are no carbohydrates in this entry.

5.6 Ligand geometry [i](#)

Of 10 ligands modelled in this entry, 1 is monoatomic - leaving 9 for Mogul analysis.

In the following table, the Counts columns list the number of bonds (or angles) for which Mogul statistics could be retrieved, the number of bonds (or angles) that are observed in the model and the number of bonds (or angles) that are defined in the Chemical Component Dictionary. The Link column lists molecule types, if any, to which the group is linked. The Z score for a bond length (or angle) is the number of standard deviations the observed value is removed from the expected value. A bond length (or angle) with $|Z| > 2$ is considered an outlier worth inspection. RMSZ is the root-mean-square of all Z scores of the bond lengths (or angles).

Mol	Type	Chain	Res	Link	Bond lengths			Bond angles		
					Counts	RMSZ	# Z > 2	Counts	RMSZ	# Z > 2
4	BEN	C	402	-	9,9,9	1.28	1 (11%)	7,11,11	0.78	0
4	BEN	A	403	-	9,9,9	0.81	1 (11%)	7,11,11	0.64	0
2	SO4	B	401	-	4,4,4	0.32	0	6,6,6	0.35	0
2	SO4	C	401	-	4,4,4	0.28	0	6,6,6	0.28	0
4	BEN	D	402	-	9,9,9	1.36	2 (22%)	7,11,11	0.74	0
4	BEN	B	403	-	9,9,9	1.26	1 (11%)	7,11,11	0.86	0
4	BEN	B	402	-	9,9,9	0.82	0	7,11,11	0.76	0
2	SO4	A	401	-	4,4,4	0.28	0	6,6,6	0.29	0
2	SO4	D	401	-	4,4,4	0.32	0	6,6,6	0.48	0

In the following table, the Chirals column lists the number of chiral outliers, the number of chiral centers analysed, the number of these observed in the model and the number defined in the Chemical Component Dictionary. Similar counts are reported in the Torsion and Rings columns. '-' means no outliers of that kind were identified.

Mol	Type	Chain	Res	Link	Chirals	Torsions	Rings
4	BEN	A	403	-	-	0/4/4/4	0/1/1/1
4	BEN	C	402	-	-	0/4/4/4	0/1/1/1
4	BEN	B	402	-	-	0/4/4/4	0/1/1/1
4	BEN	D	402	-	-	0/4/4/4	0/1/1/1
4	BEN	B	403	-	-	0/4/4/4	0/1/1/1

All (5) bond length outliers are listed below:

Mol	Chain	Res	Type	Atoms	Z	Observed(Å)	Ideal(Å)
4	C	402	BEN	C-N2	-2.77	1.26	1.33
4	D	402	BEN	C-N2	-2.71	1.26	1.33
4	B	403	BEN	C-N2	-2.68	1.27	1.33
4	D	402	BEN	C1-C	2.23	1.51	1.47
4	A	403	BEN	C1-C	2.02	1.51	1.47

There are no bond angle outliers.

There are no chirality outliers.

There are no torsion outliers.

There are no ring outliers.

No monomer is involved in short contacts.

5.7 Other polymers [i](#)

There are no such residues in this entry.

5.8 Polymer linkage issues [i](#)

There are no chain breaks in this entry.

6 Fit of model and data [i](#)

6.1 Protein, DNA and RNA chains [i](#)

In the following table, the column labelled ‘#RSRZ> 2’ contains the number (and percentage) of RSRZ outliers, followed by percent RSRZ outliers for the chain as percentile scores relative to all X-ray entries and entries of similar resolution. The OWAB column contains the minimum, median, 95th percentile and maximum values of the occupancy-weighted average B-factor per residue. The column labelled ‘Q< 0.9’ lists the number of (and percentage) of residues with an average occupancy less than 0.9.

Mol	Chain	Analysed	<RSRZ>	#RSRZ>2	OWAB(Å ²)	Q<0.9
1	A	327/342 (95%)	-0.21	7 (2%) 63 69	22, 28, 43, 57	0
1	B	317/342 (92%)	0.07	18 (5%) 23 28	25, 35, 52, 71	3 (0%)
1	C	322/342 (94%)	0.11	15 (4%) 31 37	23, 34, 51, 62	0
1	D	327/342 (95%)	-0.24	5 (1%) 73 78	23, 28, 46, 59	0
All	All	1293/1368 (94%)	-0.07	45 (3%) 44 49	22, 32, 50, 71	3 (0%)

All (45) RSRZ outliers are listed below:

Mol	Chain	Res	Type	RSRZ
1	B	16	GLY	4.2
1	B	225	ALA	4.0
1	C	16	GLY	3.9
1	A	4	HIS	3.8
1	C	225	ALA	3.5
1	B	243	ALA	3.5
1	D	7	THR	3.3
1	B	307	ASP	3.2
1	A	2	PRO	3.1
1	D	1	MET	3.1
1	C	198	THR	3.0
1	B	9	PHE	3.0
1	D	184	VAL	3.0
1	B	185	GLY	3.0
1	B	306	ASP	2.9
1	D	185	GLY	2.9
1	B	212	ASP	2.8
1	C	229	PRO	2.8
1	B	313	ILE	2.7
1	C	9	PHE	2.6
1	B	7	THR	2.6

Continued on next page...

Continued from previous page...

Mol	Chain	Res	Type	RSRZ
1	B	241	GLN	2.5
1	C	224	VAL	2.5
1	A	1	MET	2.5
1	B	239	ALA	2.4
1	A	313	ILE	2.3
1	B	223	SER	2.3
1	C	149	GLN	2.3
1	D	4	HIS	2.3
1	A	16	GLY	2.2
1	B	8	ARG	2.2
1	B	245	THR	2.2
1	B	226	GLU	2.2
1	C	182	GLU	2.2
1	B	191	VAL	2.2
1	C	183	VAL	2.2
1	A	8	ARG	2.1
1	C	15	ILE	2.1
1	C	307	ASP	2.1
1	A	315	THR	2.1
1	C	241	GLN	2.0
1	C	151	PHE	2.0
1	C	6	LEU	2.0
1	B	305	ASN	2.0
1	C	64	ARG	2.0

6.2 Non-standard residues in protein, DNA, RNA chains [i](#)

In the following table, the Atoms column lists the number of modelled atoms in the group and the number defined in the chemical component dictionary. The B-factors column lists the minimum, median, 95th percentile and maximum values of B factors of atoms in the group. The column labelled 'Q< 0.9' lists the number of atoms with occupancy less than 0.9.

Mol	Type	Chain	Res	Atoms	RSCC	RSR	B-factors(Å ²)	Q<0.9
1	LLP	B	51	24/25	0.96	0.20	30,31,32,32	0
1	LLP	C	51	24/25	0.97	0.23	28,29,32,33	0
1	LLP	D	51	24/25	0.97	0.15	23,25,27,27	0
1	LLP	A	51	24/25	0.98	0.17	22,24,25,27	0

6.3 Carbohydrates [i](#)

There are no carbohydrates in this entry.

6.4 Ligands [i](#)

In the following table, the Atoms column lists the number of modelled atoms in the group and the number defined in the chemical component dictionary. The B-factors column lists the minimum, median, 95th percentile and maximum values of B factors of atoms in the group. The column labelled 'Q<0.9' lists the number of atoms with occupancy less than 0.9.

Mol	Type	Chain	Res	Atoms	RSCC	RSR	B-factors(Å ²)	Q<0.9
4	BEN	C	402	9/9	0.89	0.17	39,40,41,41	0
4	BEN	B	403	9/9	0.89	0.18	47,48,52,53	0
4	BEN	B	402	9/9	0.94	0.15	40,41,42,42	0
4	BEN	A	403	9/9	0.97	0.09	24,24,25,26	0
2	SO4	B	401	5/5	0.97	0.11	39,39,42,44	0
4	BEN	D	402	9/9	0.98	0.09	23,23,24,24	0
2	SO4	C	401	5/5	0.98	0.14	37,39,41,42	0
2	SO4	D	401	5/5	0.99	0.09	29,29,31,31	0
3	CL	A	402	1/1	0.99	0.20	51,51,51,51	0
2	SO4	A	401	5/5	0.99	0.11	33,33,34,35	0

6.5 Other polymers [i](#)

There are no such residues in this entry.