



Full wwPDB X-ray Structure Validation Report ⓘ

Oct 23, 2023 – 03:53 AM EDT

PDB ID : 3D9D
Title : Nitroalkane oxidase: mutant D402N crystallized with 1-nitrohexane
Authors : Heroux, A.; Bozinovski, D.M.; Valley, M.P.; Fitzpatrick, P.F.; Orville, A.M.
Deposited on : 2008-05-27
Resolution : 2.10 Å(reported)

This is a Full wwPDB X-ray Structure Validation Report for a publicly released PDB entry.

We welcome your comments at validation@mail.wwpdb.org

A user guide is available at

<https://www.wwpdb.org/validation/2017/XrayValidationReportHelp>

with specific help available everywhere you see the ⓘ symbol.

The types of validation reports are described at

<http://www.wwpdb.org/validation/2017/FAQs#types>.

The following versions of software and data (see [references ⓘ](#)) were used in the production of this report:

MolProbity : 4.02b-467
Mogul : 1.8.5 (274361), CSD as541be (2020)
Xtriage (Phenix) : 1.13
EDS : 2.36
buster-report : 1.1.7 (2018)
Percentile statistics : 20191225.v01 (using entries in the PDB archive December 25th 2019)
Refmac : 5.8.0158
CCP4 : 7.0.044 (Gargrove)
Ideal geometry (proteins) : Engh & Huber (2001)
Ideal geometry (DNA, RNA) : Parkinson et al. (1996)
Validation Pipeline (wwPDB-VP) : 2.36

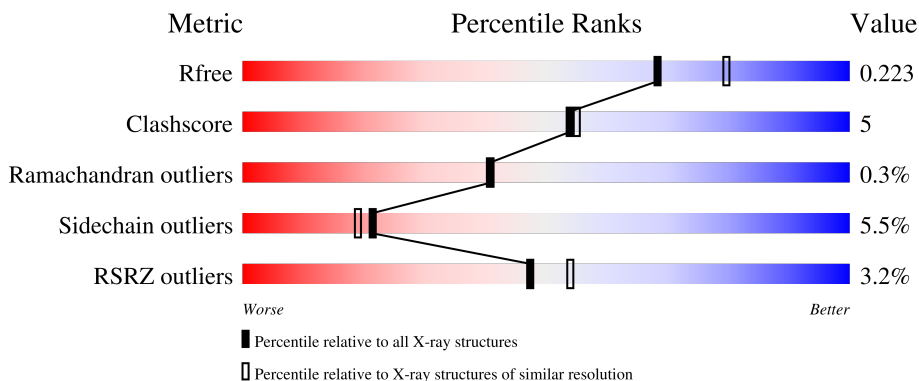
1 Overall quality at a glance i

The following experimental techniques were used to determine the structure:

X-RAY DIFFRACTION

The reported resolution of this entry is 2.10 Å.

Percentile scores (ranging between 0-100) for global validation metrics of the entry are shown in the following graphic. The table shows the number of entries on which the scores are based.



Metric	Whole archive (#Entries)	Similar resolution (#Entries, resolution range(Å))
R_{free}	130704	5197 (2.10-2.10)
Clashscore	141614	5710 (2.10-2.10)
Ramachandran outliers	138981	5647 (2.10-2.10)
Sidechain outliers	138945	5648 (2.10-2.10)
RSRZ outliers	127900	5083 (2.10-2.10)

The table below summarises the geometric issues observed across the polymeric chains and their fit to the electron density. The red, orange, yellow and green segments of the lower bar indicate the fraction of residues that contain outliers for ≥ 3 , 2, 1 and 0 types of geometric quality criteria respectively. A grey segment represents the fraction of residues that are not modelled. The numeric value for each fraction is indicated below the corresponding segment, with a dot representing fractions $\leq 5\%$. The upper red bar (where present) indicates the fraction of residues that have poor fit to the electron density. The numeric value is given above the bar.

Mol	Chain	Length	Quality of chain
1	A	438	<div style="display: flex; align-items: center;"> <div style="width: 4%; height: 10px; background-color: red; margin-right: 5px;"></div> <div style="width: 86%; height: 10px; background-color: green; margin-right: 5px;"></div> <div style="width: 11%; height: 10px; background-color: yellow; margin-right: 5px;"></div> <div style="width: 2%; height: 10px; background-color: orange; margin-right: 5px;"></div> <div style="width: 2%; height: 10px; background-color: grey;"></div> </div> <p style="margin-left: 40px;">4% 86% 11% ..</p>
1	B	438	<div style="display: flex; align-items: center;"> <div style="width: 5%; height: 10px; background-color: red; margin-right: 5px;"></div> <div style="width: 84%; height: 10px; background-color: green; margin-right: 5px;"></div> <div style="width: 11%; height: 10px; background-color: yellow; margin-right: 5px;"></div> <div style="width: 2%; height: 10px; background-color: orange; margin-right: 5px;"></div> <div style="width: 2%; height: 10px; background-color: grey;"></div> </div> <p style="margin-left: 40px;">5% 84% 11% ..</p>
1	C	438	<div style="display: flex; align-items: center;"> <div style="width: 0%; height: 10px; background-color: red; margin-right: 5px;"></div> <div style="width: 86%; height: 10px; background-color: green; margin-right: 5px;"></div> <div style="width: 9%; height: 10px; background-color: yellow; margin-right: 5px;"></div> <div style="width: 2%; height: 10px; background-color: orange; margin-right: 5px;"></div> <div style="width: 2%; height: 10px; background-color: grey;"></div> </div> <p style="margin-left: 40px;">% 86% 9% ..</p>
1	D	438	<div style="display: flex; align-items: center;"> <div style="width: 2%; height: 10px; background-color: red; margin-right: 5px;"></div> <div style="width: 87%; height: 10px; background-color: green; margin-right: 5px;"></div> <div style="width: 10%; height: 10px; background-color: yellow; margin-right: 5px;"></div> <div style="width: 2%; height: 10px; background-color: orange; margin-right: 5px;"></div> <div style="width: 2%; height: 10px; background-color: grey;"></div> </div> <p style="margin-left: 40px;">2% 87% 10% ..</p>

The following table lists non-polymeric compounds, carbohydrate monomers and non-standard

residues in protein, DNA, RNA chains that are outliers for geometric or electron-density-fit criteria:

Mol	Type	Chain	Res	Chirality	Geometry	Clashes	Electron density
3	N6C	B	600	-	-	X	-

2 Entry composition

There are 5 unique types of molecules in this entry. The entry contains 14165 atoms, of which 0 are hydrogens and 0 are deuteriums.

In the tables below, the ZeroOcc column contains the number of atoms modelled with zero occupancy, the AltConf column contains the number of residues with at least one atom in alternate conformation and the Trace column contains the number of residues modelled with at most 2 atoms.

- Molecule 1 is a protein called Nitroalkane oxidase.

Mol	Chain	Residues	Atoms					ZeroOcc	AltConf	Trace
			Total	C	N	O	S			
1	A	432	3312	2098	567	627	20	0	0	0
1	B	431	3300	2092	565	623	20	0	0	0
1	C	430	3301	2092	565	624	20	0	0	0
1	D	431	3306	2095	566	625	20	0	0	0

There are 4 discrepancies between the modelled and reference sequences:

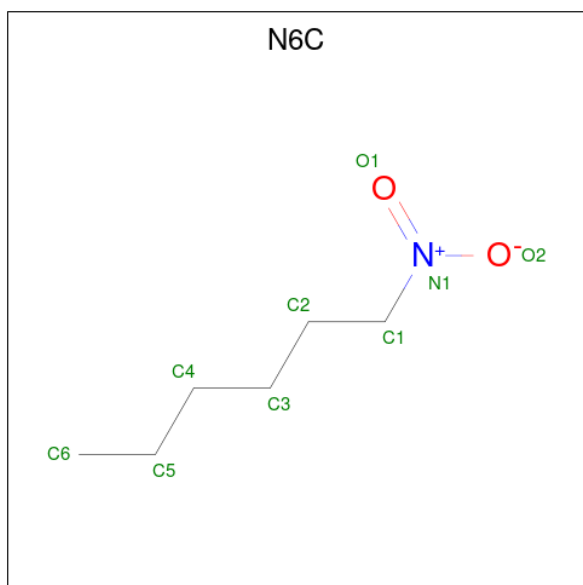
Chain	Residue	Modelled	Actual	Comment	Reference
A	402	ASN	ASP	engineered mutation	UNP Q8X1D8
B	402	ASN	ASP	engineered mutation	UNP Q8X1D8
C	402	ASN	ASP	engineered mutation	UNP Q8X1D8
D	402	ASN	ASP	engineered mutation	UNP Q8X1D8

- Molecule 2 is FLAVIN-ADENINE DINUCLEOTIDE (three-letter code: FAD) (formula: $C_{27}H_{33}N_9O_{15}P_2$).



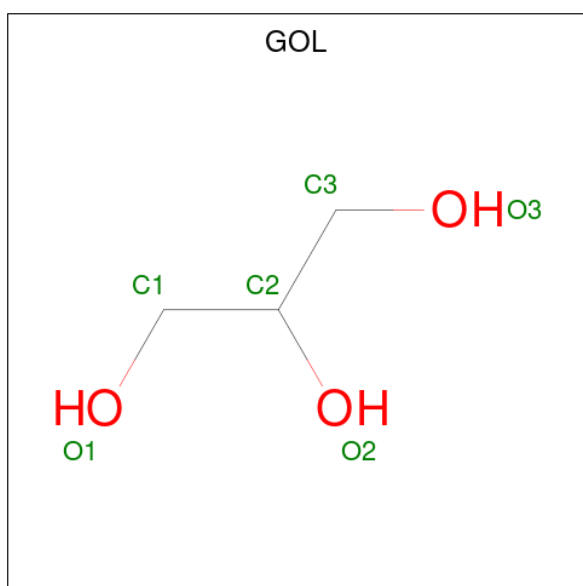
Mol	Chain	Residues	Atoms				ZeroOcc	AltConf	
			Total	C	N	O			P
2	A	1	53	27	9	15	2	0	0
2	B	1	53	27	9	15	2	0	0
2	C	1	53	27	9	15	2	0	0
2	D	1	53	27	9	15	2	0	0

- Molecule 3 is 1-nitrohexane (three-letter code: N6C) (formula: $C_6H_{13}NO_2$).



Mol	Chain	Residues	Atoms				ZeroOcc	AltConf
3	A	1	Total	C	N	O	0	0
			9	6	1	2		
3	B	1	Total	C	N	O	0	0
			9	6	1	2		
3	C	1	Total	C	N	O	0	0
			9	6	1	2		
3	D	1	Total	C	N	O	0	0
			9	6	1	2		

- Molecule 4 is GLYCEROL (three-letter code: GOL) (formula: C₃H₈O₃).



Mol	Chain	Residues	Atoms			ZeroOcc	AltConf
4	A	1	Total	C	O	0	0
			6	3	3		
4	A	1	Total	C	O	0	0
			6	3	3		
4	B	1	Total	C	O	0	0
			6	3	3		
4	B	1	Total	C	O	0	0
			6	3	3		
4	C	1	Total	C	O	0	0
			6	3	3		
4	C	1	Total	C	O	0	0
			6	3	3		
4	D	1	Total	C	O	0	0
			6	3	3		
4	D	1	Total	C	O	0	0
			6	3	3		

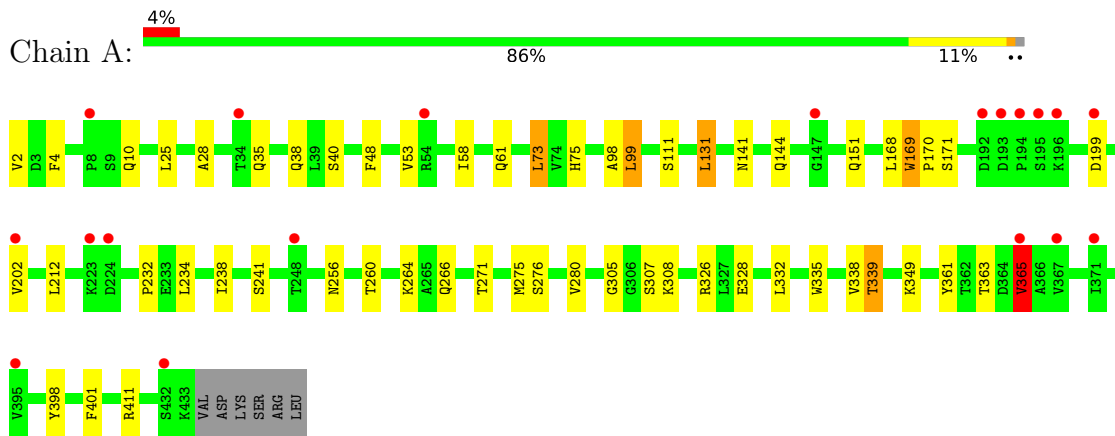
- Molecule 5 is water.

Mol	Chain	Residues	Atoms	ZeroOcc	AltConf
5	A	160	Total O 160 160	0	0
5	B	150	Total O 150 150	0	0
5	C	167	Total O 167 167	0	0
5	D	173	Total O 173 173	0	0

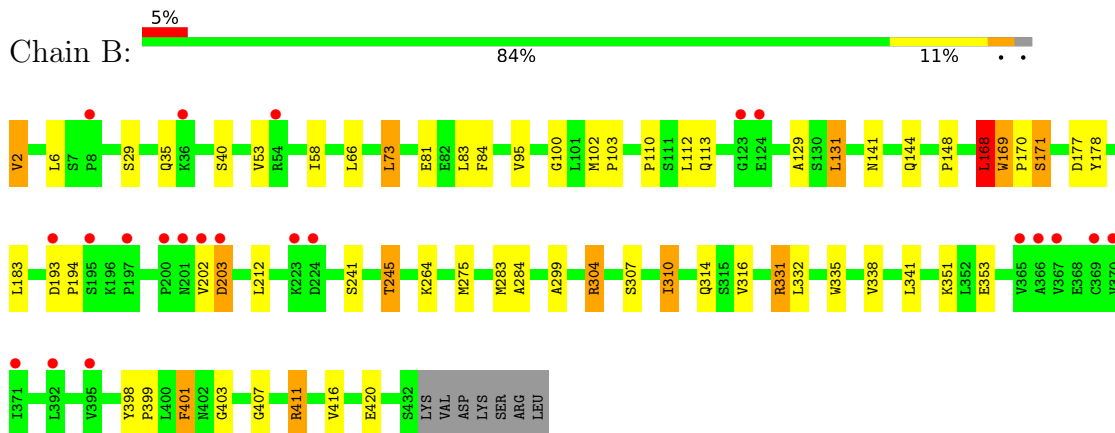
3 Residue-property plots [i](#)

These plots are drawn for all protein, RNA, DNA and oligosaccharide chains in the entry. The first graphic for a chain summarises the proportions of the various outlier classes displayed in the second graphic. The second graphic shows the sequence view annotated by issues in geometry and electron density. Residues are color-coded according to the number of geometric quality criteria for which they contain at least one outlier: green = 0, yellow = 1, orange = 2 and red = 3 or more. A red dot above a residue indicates a poor fit to the electron density ($RSRZ > 2$). Stretches of 2 or more consecutive residues without any outlier are shown as a green connector. Residues present in the sample, but not in the model, are shown in grey.

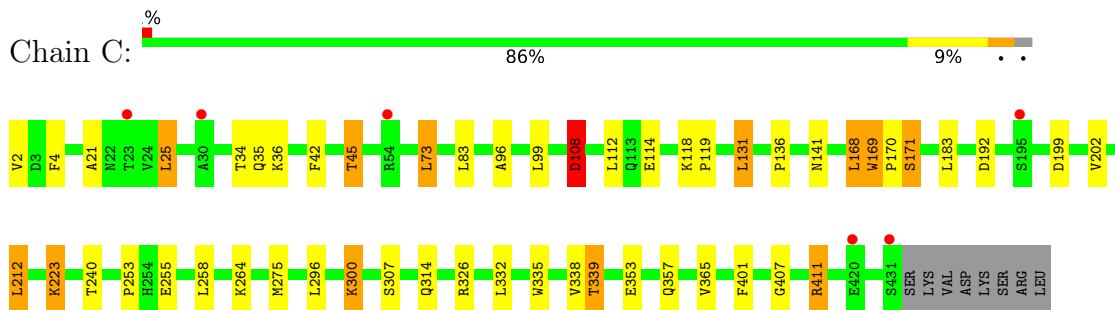
- Molecule 1: Nitroalkane oxidase




- Molecule 1: Nitroalkane oxidase

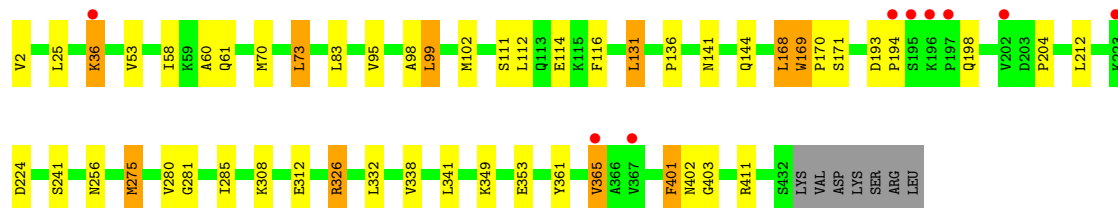


- Molecule 1: Nitroalkane oxidase



- Molecule 1: Nitroalkane oxidase

Chain D:  2% 87% 10% ..



4 Data and refinement statistics

Property	Value	Source
Space group	P 32 2 1	Depositor
Cell constants a, b, c, α , β , γ	107.88Å 107.88Å 338.44Å 90.00° 90.00° 120.00°	Depositor
Resolution (Å)	50.00 – 2.10 48.66 – 2.10	Depositor EDS
% Data completeness (in resolution range)	91.9 (50.00-2.10) 91.9 (48.66-2.10)	Depositor EDS
R_{merge}	0.09	Depositor
R_{sym}	0.09	Depositor
$\langle I/\sigma(I) \rangle$ ¹	1.39 (at 2.10Å)	Xtrriage
Refinement program	REFMAC	Depositor
R, R_{free}	0.180 , 0.219 0.185 , 0.223	Depositor DCC
R_{free} test set	6169 reflections (5.01%)	wwPDB-VP
Wilson B-factor (Å ²)	32.1	Xtrriage
Anisotropy	0.004	Xtrriage
Bulk solvent k_{sol} (e/Å ³), B_{sol} (Å ²)	0.39 , 39.0	EDS
L-test for twinning ²	$\langle L \rangle = 0.48$, $\langle L^2 \rangle = 0.30$	Xtrriage
Estimated twinning fraction	0.033 for -h,-k,l	Xtrriage
F_o, F_c correlation	0.96	EDS
Total number of atoms	14165	wwPDB-VP
Average B, all atoms (Å ²)	36.0	wwPDB-VP

Xtrriage's analysis on translational NCS is as follows: *The largest off-origin peak in the Patterson function is 2.86% of the height of the origin peak. No significant pseudotranslation is detected.*

¹Intensities estimated from amplitudes.

²Theoretical values of $\langle |L| \rangle$, $\langle L^2 \rangle$ for acentric reflections are 0.5, 0.333 respectively for untwinned datasets, and 0.375, 0.2 for perfectly twinned datasets.

5 Model quality [i](#)

5.1 Standard geometry [i](#)

Bond lengths and bond angles in the following residue types are not validated in this section: N6C, GOL, FAD

The Z score for a bond length (or angle) is the number of standard deviations the observed value is removed from the expected value. A bond length (or angle) with $|Z| > 5$ is considered an outlier worth inspection. RMSZ is the root-mean-square of all Z scores of the bond lengths (or angles).

Mol	Chain	Bond lengths		Bond angles	
		RMSZ	# Z >5	RMSZ	# Z >5
1	A	0.68	0/3381	0.71	1/4589 (0.0%)
1	B	0.67	0/3369	0.76	4/4575 (0.1%)
1	C	0.69	0/3370	0.73	2/4574 (0.0%)
1	D	0.69	0/3375	0.72	1/4581 (0.0%)
All	All	0.68	0/13495	0.73	8/18319 (0.0%)

Chiral center outliers are detected by calculating the chiral volume of a chiral center and verifying if the center is modelled as a planar moiety or with the opposite hand. A planarity outlier is detected by checking planarity of atoms in a peptide group, atoms in a mainchain group or atoms of a sidechain that are expected to be planar.

Mol	Chain	#Chirality outliers	#Planarity outliers
1	C	1	0

There are no bond length outliers.

All (8) bond angle outliers are listed below:

Mol	Chain	Res	Type	Atoms	Z	Observed(°)	Ideal(°)
1	B	331	ARG	NE-CZ-NH2	-11.50	114.55	120.30
1	B	331	ARG	NE-CZ-NH1	8.58	124.59	120.30
1	A	365	VAL	CG1-CB-CG2	5.79	120.16	110.90
1	B	168	LEU	CA-CB-CG	5.59	128.15	115.30
1	D	326	ARG	NE-CZ-NH1	-5.59	117.51	120.30
1	B	131	LEU	CA-CB-CG	5.22	127.30	115.30
1	C	131	LEU	CA-CB-CG	5.15	127.14	115.30
1	C	108	ASP	N-CA-CB	5.02	119.64	110.60

All (1) chirality outliers are listed below:

Mol	Chain	Res	Type	Atom
1	C	108	ASP	CA

There are no planarity outliers.

5.2 Too-close contacts [i](#)

In the following table, the Non-H and H(model) columns list the number of non-hydrogen atoms and hydrogen atoms in the chain respectively. The H(added) column lists the number of hydrogen atoms added and optimized by MolProbity. The Clashes column lists the number of clashes within the asymmetric unit, whereas Symm-Clashes lists symmetry-related clashes.

Mol	Chain	Non-H	H(model)	H(added)	Clashes	Symm-Clashes
1	A	3312	0	3317	35	0
1	B	3300	0	3295	46	0
1	C	3301	0	3310	37	2
1	D	3306	0	3312	31	0
2	A	53	0	31	3	0
2	B	53	0	31	2	0
2	C	53	0	31	3	0
2	D	53	0	31	2	0
3	A	9	0	13	2	0
3	B	9	0	13	7	0
3	C	9	0	13	0	0
3	D	9	0	13	2	0
4	A	12	0	16	1	0
4	B	12	0	16	1	0
4	C	12	0	16	2	0
4	D	12	0	16	1	0
5	A	160	0	0	2	0
5	B	150	0	0	2	0
5	C	167	0	0	4	1
5	D	173	0	0	1	0
All	All	14165	0	13474	143	2

The all-atom clashscore is defined as the number of clashes found per 1000 atoms (including hydrogen atoms). The all-atom clashscore for this structure is 5.

All (143) close contacts within the same asymmetric unit are listed below, sorted by their clash magnitude.

Atom-1	Atom-2	Interatomic distance (Å)	Clash overlap (Å)
1:B:203:ASP:HB3	5:B:785:HOH:O	1.40	1.19

Continued on next page...

Continued from previous page...

Atom-1	Atom-2	Interatomic distance (Å)	Clash overlap (Å)
1:B:102:MET:HE1	1:B:275:MET:HG3	1.36	1.06
1:B:245:THR:HG23	5:B:851:HOH:O	1.74	0.88
1:A:141:ASN:HD21	2:A:500:FAD:H61A	1.20	0.86
1:D:275:MET:HE3	1:D:341:LEU:HD13	1.58	0.83
1:B:304:ARG:HB2	1:B:310:ILE:CD1	2.11	0.80
1:B:2:VAL:N	4:D:701:GOL:HO3	1.80	0.80
1:B:304:ARG:HB2	1:B:310:ILE:HD13	1.64	0.80
1:A:73:LEU:HB3	1:A:338:VAL:HB	1.64	0.78
1:B:141:ASN:HD21	2:B:500:FAD:H61A	1.29	0.78
1:A:199:ASP:HB3	1:A:202:VAL:HG12	1.66	0.78
1:D:73:LEU:HB3	1:D:338:VAL:HB	1.67	0.76
1:B:102:MET:HE1	1:B:275:MET:CG	2.14	0.75
1:A:328:GLU:OE1	5:A:857:HOH:O	2.05	0.74
1:A:38:GLN:HG3	1:A:232:PRO:O	1.88	0.74
1:B:73:LEU:HB3	1:B:338:VAL:HB	1.70	0.73
1:C:73:LEU:HB3	1:C:338:VAL:HB	1.70	0.71
1:A:53:VAL:HG22	1:A:58:ILE:HG13	1.70	0.71
1:C:141:ASN:HD21	2:C:500:FAD:H61A	1.36	0.71
1:A:168:LEU:C	1:A:170:PRO:HD3	2.12	0.70
1:A:2:VAL:N	4:C:701:GOL:HO3	1.89	0.69
1:A:326:ARG:HB3	1:A:365:VAL:HG13	1.74	0.69
1:C:45:THR:HG23	5:C:811:HOH:O	1.92	0.69
1:B:53:VAL:HG22	1:B:58:ILE:HG12	1.74	0.69
1:A:4:PHE:HD1	1:C:339:THR:HG21	1.58	0.68
1:B:95:VAL:HG13	3:B:600:N6C:H6B	1.76	0.68
1:D:168:LEU:C	1:D:170:PRO:HD3	2.14	0.68
1:A:141:ASN:ND2	2:A:500:FAD:H61A	1.92	0.68
1:D:141:ASN:HD21	2:D:500:FAD:H61A	1.43	0.66
1:C:407:GLY:O	1:C:411:ARG:HG3	1.96	0.65
1:D:99:LEU:HD22	1:D:131:LEU:HD23	1.79	0.65
1:A:339:THR:HG21	1:C:4:PHE:HD1	1.62	0.64
1:C:45:THR:CG2	5:C:811:HOH:O	2.45	0.64
1:A:99:LEU:HD22	1:A:131:LEU:HD23	1.79	0.63
1:C:168:LEU:C	1:C:170:PRO:HD3	2.20	0.62
1:D:99:LEU:HD23	1:D:102:MET:HE3	1.81	0.62
1:D:275:MET:CE	1:D:341:LEU:HD13	2.28	0.62
1:B:81:GLU:OE2	1:B:331:ARG:HD3	1.99	0.62
1:A:35:GLN:HE21	1:A:40:SER:HB3	1.65	0.61
1:C:199:ASP:HB3	1:C:202:VAL:HG22	1.82	0.61
4:B:701:GOL:HO3	1:D:2:VAL:N	1.99	0.60
1:C:307:SER:H	1:D:144:GLN:HE22	1.50	0.60

Continued on next page...

Continued from previous page...

Atom-1	Atom-2	Interatomic distance (Å)	Clash overlap (Å)
1:B:407:GLY:O	1:B:411:ARG:HG3	2.02	0.59
1:B:95:VAL:HG13	3:B:600:N6C:C6	2.33	0.59
1:A:199:ASP:HB3	1:A:202:VAL:CG1	2.33	0.59
1:D:95:VAL:HB	3:D:600:N6C:H6A	1.84	0.58
1:B:53:VAL:HG22	1:B:58:ILE:CG1	2.33	0.58
1:B:304:ARG:HB2	1:B:310:ILE:HD11	1.84	0.57
1:A:61:GLN:HE21	1:A:98:ALA:HB2	1.70	0.57
1:C:335:TRP:O	1:C:339:THR:HB	2.05	0.57
1:C:326:ARG:CD	1:C:365:VAL:HB	2.34	0.57
1:C:296:LEU:O	1:C:300:LYS:HG3	2.05	0.56
1:C:141:ASN:ND2	2:C:500:FAD:H61A	2.02	0.56
1:C:223:LYS:HE3	1:C:223:LYS:HA	1.88	0.55
1:D:141:ASN:ND2	2:D:500:FAD:H61A	2.03	0.55
1:A:271:THR:O	1:A:275:MET:HG2	2.08	0.54
1:B:401:PHE:C	1:B:401:PHE:CD2	2.81	0.54
1:B:299:ALA:HA	1:B:310:ILE:HG22	1.89	0.54
1:A:4:PHE:CD1	1:C:339:THR:HG21	2.41	0.53
1:B:171:SER:HA	1:B:241:SER:O	2.08	0.53
1:C:253:PRO:HB2	1:C:255:GLU:HG2	1.92	0.52
1:B:310:ILE:HG23	1:B:316:VAL:HG11	1.91	0.52
1:D:36:LYS:H	1:D:36:LYS:HD2	1.75	0.52
1:D:136:PRO:HA	1:D:168:LEU:HD12	1.92	0.52
1:A:144:GLN:HE22	1:B:307:SER:H	1.58	0.52
1:B:168:LEU:C	1:B:170:PRO:HD3	2.29	0.52
1:B:141:ASN:ND2	2:B:500:FAD:H61A	2.04	0.51
1:B:353:GLU:HB2	1:B:416:VAL:HG11	1.93	0.51
1:C:339:THR:HG22	5:C:705:HOH:O	2.10	0.51
1:D:169:TRP:N	1:D:170:PRO:CD	2.73	0.51
1:A:38:GLN:NE2	1:A:234:LEU:H	2.10	0.50
1:A:151:GLN:HG2	5:A:753:HOH:O	2.12	0.49
1:C:21:ALA:HA	1:C:25:LEU:HB2	1.95	0.49
1:D:326:ARG:HB3	1:D:365:VAL:HG13	1.93	0.49
1:A:2:VAL:O	4:C:701:GOL:H32	2.12	0.49
1:D:171:SER:HA	1:D:241:SER:O	2.12	0.49
1:B:110:PRO:HA	1:B:113:GLN:HE21	1.78	0.48
1:A:339:THR:HG21	1:C:4:PHE:CD1	2.44	0.48
1:D:99:LEU:HA	1:D:102:MET:HE3	1.95	0.48
1:A:168:LEU:O	1:A:170:PRO:HD3	2.14	0.48
1:D:168:LEU:O	1:D:170:PRO:HD3	2.12	0.47
1:A:307:SER:H	1:B:144:GLN:HE22	1.62	0.47
1:C:326:ARG:NH2	5:C:710:HOH:O	2.46	0.47

Continued on next page...

Continued from previous page...

Atom-1	Atom-2	Interatomic distance (Å)	Clash overlap (Å)
1:B:341:LEU:HD23	1:B:351:LYS:HB3	1.97	0.47
1:C:34:THR:HG22	1:C:35:GLN:NE2	2.30	0.47
1:C:326:ARG:HD3	1:C:365:VAL:HB	1.94	0.47
4:A:701:GOL:HO1	1:C:2:VAL:N	2.13	0.47
1:D:61:GLN:HE21	1:D:98:ALA:HB2	1.80	0.47
1:A:10:GLN:HG3	1:A:75:HIS:CE1	2.50	0.47
1:A:305:GLY:O	1:B:148:PRO:HG2	2.15	0.46
1:A:335:TRP:O	1:A:339:THR:HB	2.16	0.46
1:B:35:GLN:HB3	1:B:40:SER:HB2	1.96	0.46
1:B:95:VAL:CG1	3:B:600:N6C:H5	2.46	0.46
3:A:600:N6C:H1A	3:A:600:N6C:H4A	1.63	0.46
1:A:171:SER:HA	1:A:241:SER:O	2.16	0.46
1:D:168:LEU:C	1:D:170:PRO:CD	2.83	0.46
1:D:402:ASN:HA	3:D:600:N6C:O1	2.16	0.45
1:B:169:TRP:N	1:B:170:PRO:CD	2.79	0.45
1:B:95:VAL:HG13	3:B:600:N6C:C5	2.46	0.45
1:A:38:GLN:HE22	1:A:238:ILE:HA	1.81	0.44
1:B:168:LEU:HD13	1:B:169:TRP:NE1	2.33	0.44
1:D:361:TYR:O	1:D:365:VAL:HB	2.16	0.44
1:C:407:GLY:O	1:C:411:ARG:CG	2.65	0.44
1:D:281:GLY:O	1:D:285:ILE:HG13	2.16	0.44
1:A:276:SER:O	1:A:280:VAL:HB	2.17	0.44
1:D:112:LEU:HD12	1:D:116:PHE:CE2	2.53	0.44
1:A:361:TYR:O	1:A:365:VAL:HB	2.17	0.44
1:C:42:PHE:O	1:C:45:THR:HB	2.18	0.44
3:B:600:N6C:H1	3:B:600:N6C:H4	1.66	0.44
1:C:112:LEU:HD23	1:C:258:LEU:HD12	2.00	0.44
1:C:136:PRO:HA	1:C:168:LEU:HD12	1.99	0.44
1:B:398:TYR:N	1:B:399:PRO:HD2	2.33	0.44
1:B:84:PHE:CE1	1:B:283:MET:HG2	2.54	0.43
1:B:129:ALA:HA	1:B:183:LEU:O	2.18	0.43
1:D:53:VAL:HG22	1:D:58:ILE:HD13	2.00	0.43
1:B:304:ARG:CB	1:B:310:ILE:HD11	2.47	0.43
1:B:6:LEU:HD21	1:B:335:TRP:CH2	2.54	0.43
1:A:28:ALA:HA	1:A:48:PHE:CZ	2.53	0.42
1:C:168:LEU:HD13	1:C:169:TRP:NE1	2.34	0.42
1:B:100:GLY:O	1:B:103:PRO:HD2	2.20	0.42
1:D:198:GLN:NE2	5:D:787:HOH:O	2.53	0.42
1:B:314:GLN:HB2	1:C:314:GLN:HB2	2.02	0.41
1:C:240:THR:HG21	2:C:500:FAD:HM72	2.02	0.41
1:D:60:ALA:O	1:D:70:MET:HB2	2.19	0.41

Continued on next page...

Continued from previous page...

Atom-1	Atom-2	Interatomic distance (Å)	Clash overlap (Å)
2:A:500:FAD:N5	3:A:600:N6C:C1	2.83	0.41
1:C:183:LEU:HD11	1:C:212:LEU:HG	2.02	0.41
1:C:96:ALA:HB1	1:C:171:SER:HB2	2.01	0.41
1:C:326:ARG:HD2	1:C:365:VAL:HB	2.00	0.41
1:B:95:VAL:CG1	3:B:600:N6C:C5	2.97	0.41
1:D:193:ASP:HA	1:D:194:PRO:HD2	1.87	0.41
1:D:401:PHE:CD2	1:D:401:PHE:C	2.94	0.41
1:B:193:ASP:HA	1:B:194:PRO:HD2	1.94	0.41
1:A:169:TRP:N	1:A:170:PRO:CD	2.83	0.41
1:B:95:VAL:HG13	3:B:600:N6C:H5	2.03	0.41
1:B:102:MET:HE1	1:B:275:MET:CB	2.51	0.41
1:C:118:LYS:HB3	1:C:119:PRO:HD3	2.03	0.41
1:C:353:GLU:O	1:C:357:GLN:HG3	2.20	0.41
1:B:177:ASP:O	1:B:178:TYR:HB2	2.21	0.40
1:C:169:TRP:N	1:C:170:PRO:CD	2.84	0.40
1:D:36:LYS:H	1:D:36:LYS:CD	2.33	0.40
1:D:198:GLN:HE22	1:D:204:PRO:HB3	1.86	0.40
1:A:363:THR:HG22	1:A:398:TYR:HB3	2.04	0.40
1:B:284:ALA:HA	1:B:398:TYR:CE2	2.57	0.40

All (2) symmetry-related close contacts are listed below. The label for Atom-2 includes the symmetry operator and encoded unit-cell translations to be applied.

Atom-1	Atom-2	Interatomic distance (Å)	Clash overlap (Å)
1:C:114:GLU:OE1	5:C:840:HOH:O[6_554]	1.71	0.49
1:C:108:ASP:OD2	1:C:264:LYS:NZ[6_554]	2.11	0.09

5.3 Torsion angles [i](#)

5.3.1 Protein backbone [i](#)

In the following table, the Percentiles column shows the percent Ramachandran outliers of the chain as a percentile score with respect to all X-ray entries followed by that with respect to entries of similar resolution.

The Analysed column shows the number of residues for which the backbone conformation was analysed, and the total number of residues.

Mol	Chain	Analysed	Favoured	Allowed	Outliers	Percentiles
1	A	430/438 (98%)	424 (99%)	5 (1%)	1 (0%)	47 49

Continued on next page...

Continued from previous page...

Mol	Chain	Analysed	Favoured	Allowed	Outliers	Percentiles	
1	B	429/438 (98%)	419 (98%)	8 (2%)	2 (0%)	29	26
1	C	428/438 (98%)	418 (98%)	9 (2%)	1 (0%)	47	49
1	D	429/438 (98%)	422 (98%)	5 (1%)	2 (0%)	29	26
All	All	1716/1752 (98%)	1683 (98%)	27 (2%)	6 (0%)	41	41

All (6) Ramachandran outliers are listed below:

Mol	Chain	Res	Type
1	A	169	TRP
1	B	169	TRP
1	C	169	TRP
1	D	169	TRP
1	D	403	GLY
1	B	403	GLY

5.3.2 Protein sidechains [i](#)

In the following table, the Percentiles column shows the percent sidechain outliers of the chain as a percentile score with respect to all X-ray entries followed by that with respect to entries of similar resolution.

The Analysed column shows the number of residues for which the sidechain conformation was analysed, and the total number of residues.

Mol	Chain	Analysed	Rotameric	Outliers	Percentiles	
1	A	355/363 (98%)	338 (95%)	17 (5%)	25	24
1	B	351/363 (97%)	331 (94%)	20 (6%)	20	18
1	C	354/363 (98%)	335 (95%)	19 (5%)	22	20
1	D	354/363 (98%)	332 (94%)	22 (6%)	18	15
All	All	1414/1452 (97%)	1336 (94%)	78 (6%)	21	19

All (78) residues with a non-rotameric sidechain are listed below:

Mol	Chain	Res	Type
1	A	25	LEU
1	A	73	LEU
1	A	99	LEU
1	A	111	SER
1	A	131	LEU

Continued on next page...

Continued from previous page...

Mol	Chain	Res	Type
1	A	212	LEU
1	A	256	ASN
1	A	260	THR
1	A	264	LYS
1	A	266	GLN
1	A	308	LYS
1	A	332	LEU
1	A	339	THR
1	A	349	LYS
1	A	365	VAL
1	A	401	PHE
1	A	411	ARG
1	B	2	VAL
1	B	29	SER
1	B	66	LEU
1	B	73	LEU
1	B	83	LEU
1	B	112	LEU
1	B	131	LEU
1	B	168	LEU
1	B	171	SER
1	B	202	VAL
1	B	203	ASP
1	B	212	LEU
1	B	245	THR
1	B	264	LYS
1	B	304	ARG
1	B	310	ILE
1	B	332	LEU
1	B	401	PHE
1	B	411	ARG
1	B	420	GLU
1	C	25	LEU
1	C	36	LYS
1	C	45	THR
1	C	73	LEU
1	C	83	LEU
1	C	99	LEU
1	C	108	ASP
1	C	131	LEU
1	C	168	LEU
1	C	171	SER

Continued on next page...

Continued from previous page...

Mol	Chain	Res	Type
1	C	192	ASP
1	C	212	LEU
1	C	223	LYS
1	C	275	MET
1	C	300	LYS
1	C	332	LEU
1	C	339	THR
1	C	401	PHE
1	C	411	ARG
1	D	25	LEU
1	D	36	LYS
1	D	73	LEU
1	D	83	LEU
1	D	99	LEU
1	D	111	SER
1	D	114	GLU
1	D	131	LEU
1	D	168	LEU
1	D	212	LEU
1	D	224	ASP
1	D	256	ASN
1	D	275	MET
1	D	280	VAL
1	D	308	LYS
1	D	312	GLU
1	D	332	LEU
1	D	349	LYS
1	D	353	GLU
1	D	365	VAL
1	D	401	PHE
1	D	411	ARG

Sometimes sidechains can be flipped to improve hydrogen bonding and reduce clashes. All (38) such sidechains are listed below:

Mol	Chain	Res	Type
1	A	22	ASN
1	A	35	GLN
1	A	38	GLN
1	A	43	GLN
1	A	61	GLN
1	A	137	ASN
1	A	141	ASN

Continued on next page...

Continued from previous page...

Mol	Chain	Res	Type
1	A	144	GLN
1	A	198	GLN
1	A	256	ASN
1	A	357	GLN
1	B	22	ASN
1	B	43	GLN
1	B	113	GLN
1	B	137	ASN
1	B	141	ASN
1	B	144	GLN
1	B	207	GLN
1	B	256	ASN
1	B	266	GLN
1	B	357	GLN
1	C	18	GLN
1	C	22	ASN
1	C	38	GLN
1	C	113	GLN
1	C	137	ASN
1	C	141	ASN
1	C	144	GLN
1	C	207	GLN
1	C	256	ASN
1	D	22	ASN
1	D	61	GLN
1	D	113	GLN
1	D	141	ASN
1	D	144	GLN
1	D	198	GLN
1	D	256	ASN
1	D	266	GLN

5.3.3 RNA [i](#)

There are no RNA molecules in this entry.

5.4 Non-standard residues in protein, DNA, RNA chains [i](#)

There are no non-standard protein/DNA/RNA residues in this entry.

5.5 Carbohydrates [i](#)

There are no monosaccharides in this entry.

5.6 Ligand geometry [i](#)

16 ligands are modelled in this entry.

In the following table, the Counts columns list the number of bonds (or angles) for which Mogul statistics could be retrieved, the number of bonds (or angles) that are observed in the model and the number of bonds (or angles) that are defined in the Chemical Component Dictionary. The Link column lists molecule types, if any, to which the group is linked. The Z score for a bond length (or angle) is the number of standard deviations the observed value is removed from the expected value. A bond length (or angle) with $|Z| > 2$ is considered an outlier worth inspection. RMSZ is the root-mean-square of all Z scores of the bond lengths (or angles).

Mol	Type	Chain	Res	Link	Bond lengths			Bond angles		
					Counts	RMSZ	# Z > 2	Counts	RMSZ	# Z > 2
4	GOL	A	701	-	5,5,5	0.40	0	5,5,5	0.77	0
2	FAD	B	500	-	53,58,58	1.16	4 (7%)	68,89,89	1.36	8 (11%)
3	N6C	C	600	-	6,8,8	0.33	0	4,8,8	0.57	0
2	FAD	C	500	-	53,58,58	1.26	4 (7%)	68,89,89	1.36	8 (11%)
4	GOL	B	701	-	5,5,5	0.38	0	5,5,5	0.28	0
4	GOL	C	701	-	5,5,5	0.43	0	5,5,5	0.34	0
2	FAD	D	500	-	53,58,58	1.25	5 (9%)	68,89,89	1.50	10 (14%)
2	FAD	A	500	-	53,58,58	1.22	4 (7%)	68,89,89	1.40	10 (14%)
3	N6C	A	600	-	6,8,8	0.39	0	4,8,8	0.66	0
4	GOL	B	700	-	5,5,5	0.36	0	5,5,5	0.32	0
4	GOL	A	700	-	5,5,5	0.43	0	5,5,5	0.51	0
4	GOL	D	701	-	5,5,5	0.39	0	5,5,5	0.52	0
3	N6C	B	600	-	6,8,8	0.29	0	4,8,8	0.61	0
4	GOL	C	700	-	5,5,5	0.45	0	5,5,5	0.49	0
3	N6C	D	600	-	6,8,8	0.30	0	4,8,8	0.74	0
4	GOL	D	700	-	5,5,5	0.60	0	5,5,5	0.46	0

In the following table, the Chirals column lists the number of chiral outliers, the number of chiral centers analysed, the number of these observed in the model and the number defined in the Chemical Component Dictionary. Similar counts are reported in the Torsion and Rings columns. '-' means no outliers of that kind were identified.

Mol	Type	Chain	Res	Link	Chirals	Torsions	Rings
4	GOL	A	701	-	-	2/4/4/4	-
2	FAD	B	500	-	-	0/30/50/50	0/6/6/6

Continued on next page...

Continued from previous page...

Mol	Type	Chain	Res	Link	Chirals	Torsions	Rings
3	N6C	C	600	-	-	2/5/6/6	-
2	FAD	C	500	-	-	5/30/50/50	0/6/6/6
4	GOL	B	701	-	-	0/4/4/4	-
4	GOL	C	701	-	-	0/4/4/4	-
2	FAD	D	500	-	-	4/30/50/50	0/6/6/6
2	FAD	A	500	-	-	5/30/50/50	0/6/6/6
3	N6C	A	600	-	-	2/5/6/6	-
4	GOL	B	700	-	-	0/4/4/4	-
4	GOL	A	700	-	-	0/4/4/4	-
4	GOL	D	701	-	-	0/4/4/4	-
3	N6C	B	600	-	-	2/5/6/6	-
4	GOL	C	700	-	-	0/4/4/4	-
3	N6C	D	600	-	-	3/5/6/6	-
4	GOL	D	700	-	-	0/4/4/4	-

All (17) bond length outliers are listed below:

Mol	Chain	Res	Type	Atoms	Z	Observed(Å)	Ideal(Å)
2	C	500	FAD	C4X-N5	4.91	1.40	1.30
2	A	500	FAD	C4X-N5	4.55	1.39	1.30
2	A	500	FAD	C2A-N3A	4.28	1.39	1.32
2	D	500	FAD	C2A-N3A	4.26	1.39	1.32
2	D	500	FAD	C4X-N5	4.08	1.38	1.30
2	B	500	FAD	C4X-N5	4.06	1.38	1.30
2	C	500	FAD	C2A-N3A	3.95	1.38	1.32
2	C	500	FAD	C10-N1	3.79	1.41	1.33
2	B	500	FAD	C2A-N3A	3.31	1.37	1.32
2	B	500	FAD	C10-N1	2.78	1.38	1.33
2	D	500	FAD	C10-N1	2.70	1.38	1.33
2	A	500	FAD	C2A-N1A	2.54	1.38	1.33
2	A	500	FAD	C10-N1	2.47	1.38	1.33
2	D	500	FAD	C2A-N1A	2.47	1.38	1.33
2	B	500	FAD	C2A-N1A	2.18	1.38	1.33
2	D	500	FAD	C8A-N7A	2.15	1.38	1.34
2	C	500	FAD	C2A-N1A	2.10	1.37	1.33

All (36) bond angle outliers are listed below:

Mol	Chain	Res	Type	Atoms	Z	Observed(°)	Ideal(°)
2	D	500	FAD	N3A-C2A-N1A	-6.05	119.22	128.68

Continued on next page...

Continued from previous page...

Mol	Chain	Res	Type	Atoms	Z	Observed(°)	Ideal(°)
2	A	500	FAD	N3A-C2A-N1A	-5.85	119.53	128.68
2	C	500	FAD	N3A-C2A-N1A	-5.41	120.23	128.68
2	B	500	FAD	N3A-C2A-N1A	-4.86	121.08	128.68
2	C	500	FAD	C9A-C5X-N5	-3.92	118.17	122.43
2	D	500	FAD	C9A-C5X-N5	-3.77	118.34	122.43
2	B	500	FAD	C9A-C5X-N5	-3.55	118.57	122.43
2	A	500	FAD	C4-N3-C2	-3.40	119.35	125.64
2	B	500	FAD	C4-N3-C2	-3.37	119.42	125.64
2	C	500	FAD	C10-C4X-N5	-3.34	117.77	124.86
2	A	500	FAD	C10-C4X-N5	-3.31	117.84	124.86
2	D	500	FAD	C4-N3-C2	-3.16	119.81	125.64
2	D	500	FAD	C4X-C4-N3	3.00	120.80	113.19
2	B	500	FAD	C10-C4X-N5	-2.91	118.68	124.86
2	D	500	FAD	C10-C4X-N5	-2.87	118.76	124.86
2	B	500	FAD	C4-C4X-C10	2.59	121.14	116.79
2	A	500	FAD	C4-C4X-N5	2.58	121.90	118.23
2	A	500	FAD	C4X-C4-N3	2.58	119.73	113.19
2	C	500	FAD	C4-C4X-C10	2.49	120.98	116.79
2	A	500	FAD	O4-C4-C4X	-2.45	120.10	126.60
2	B	500	FAD	C4X-C4-N3	2.44	119.39	113.19
2	D	500	FAD	C4X-C10-N1	-2.44	119.07	124.73
2	A	500	FAD	C4X-C10-N1	-2.42	119.12	124.73
2	B	500	FAD	C4X-C10-N1	-2.42	119.12	124.73
2	D	500	FAD	O4-C4-C4X	-2.38	120.28	126.60
2	A	500	FAD	C9A-C5X-N5	-2.37	119.85	122.43
2	A	500	FAD	C4X-C10-N10	2.34	119.91	116.48
2	D	500	FAD	C4-C4X-N5	2.31	121.51	118.23
2	D	500	FAD	C2A-N1A-C6A	2.23	122.56	118.75
2	D	500	FAD	C10-N1-C2	2.14	121.18	116.90
2	C	500	FAD	C4-N3-C2	-2.13	121.70	125.64
2	C	500	FAD	C4-C4X-N5	2.11	121.24	118.23
2	B	500	FAD	O4-C4-C4X	-2.11	121.01	126.60
2	A	500	FAD	C4-C4X-C10	2.05	120.24	116.79
2	C	500	FAD	C4A-C5A-N7A	-2.04	107.28	109.40
2	C	500	FAD	C5X-N5-C4X	2.03	121.45	118.07

There are no chirality outliers.

All (25) torsion outliers are listed below:

Mol	Chain	Res	Type	Atoms
4	A	701	GOL	C1-C2-C3-O3
3	B	600	N6C	C1-C2-C3-C4

Continued on next page...

Continued from previous page...

Mol	Chain	Res	Type	Atoms
3	D	600	N6C	C1-C2-C3-C4
3	A	600	N6C	C1-C2-C3-C4
2	A	500	FAD	C2'-C3'-C4'-C5'
3	B	600	N6C	C2-C3-C4-C5
2	A	500	FAD	O3'-C3'-C4'-C5'
3	A	600	N6C	C2-C3-C4-C5
3	C	600	N6C	C2-C3-C4-C5
3	C	600	N6C	C1-C2-C3-C4
2	A	500	FAD	O3'-C3'-C4'-O4'
2	A	500	FAD	C2'-C3'-C4'-O4'
4	A	701	GOL	O2-C2-C3-O3
2	D	500	FAD	C2'-C3'-C4'-O4'
2	D	500	FAD	O3'-C3'-C4'-O4'
3	D	600	N6C	C3-C4-C5-C6
2	C	500	FAD	C2'-C3'-C4'-O4'
2	D	500	FAD	O3'-C3'-C4'-C5'
2	D	500	FAD	C2'-C3'-C4'-C5'
2	C	500	FAD	O3'-C3'-C4'-O4'
2	C	500	FAD	O3'-C3'-C4'-C5'
2	C	500	FAD	C2'-C3'-C4'-C5'
3	D	600	N6C	C2-C3-C4-C5
2	A	500	FAD	C5B-O5B-PA-O3P
2	C	500	FAD	C5B-O5B-PA-O3P

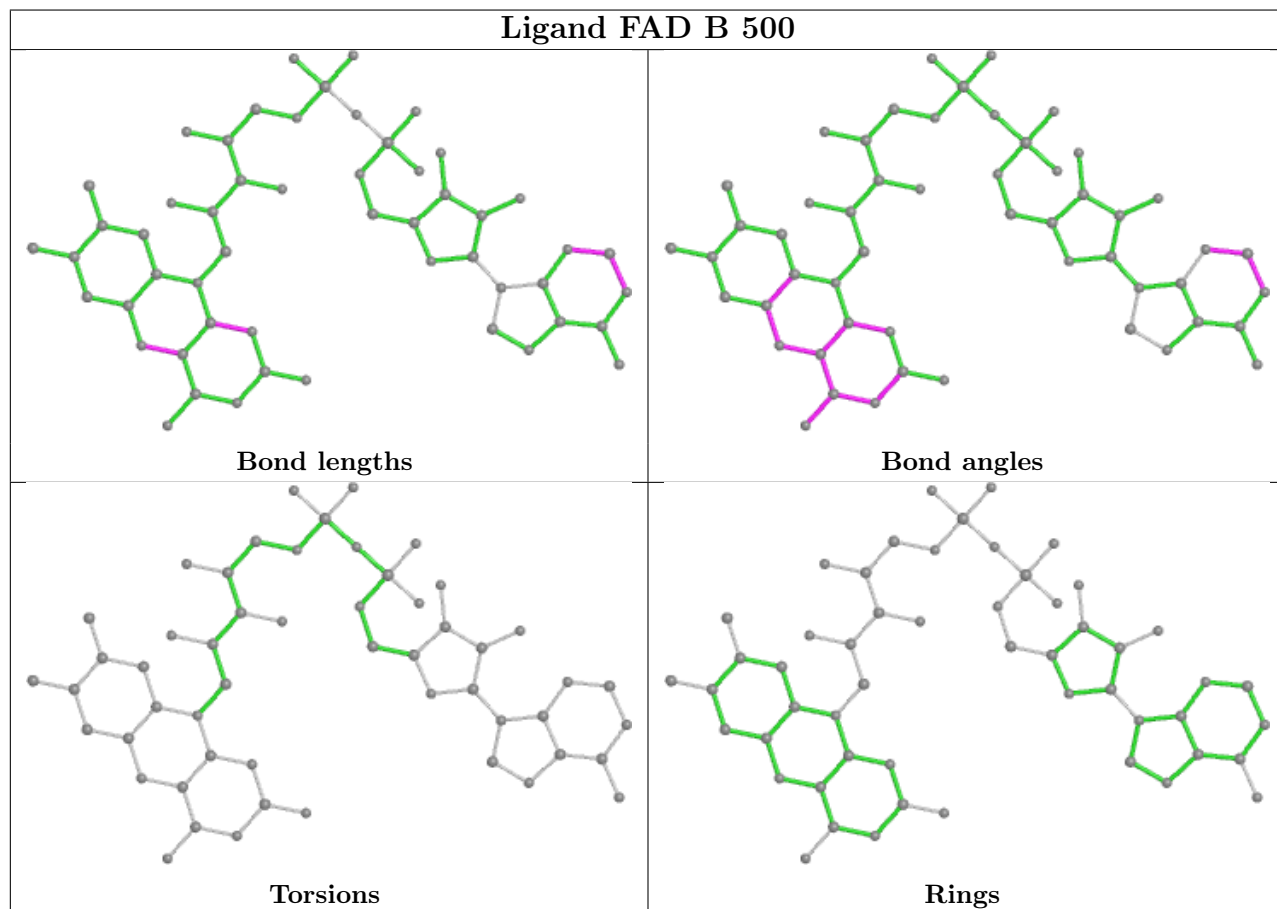
There are no ring outliers.

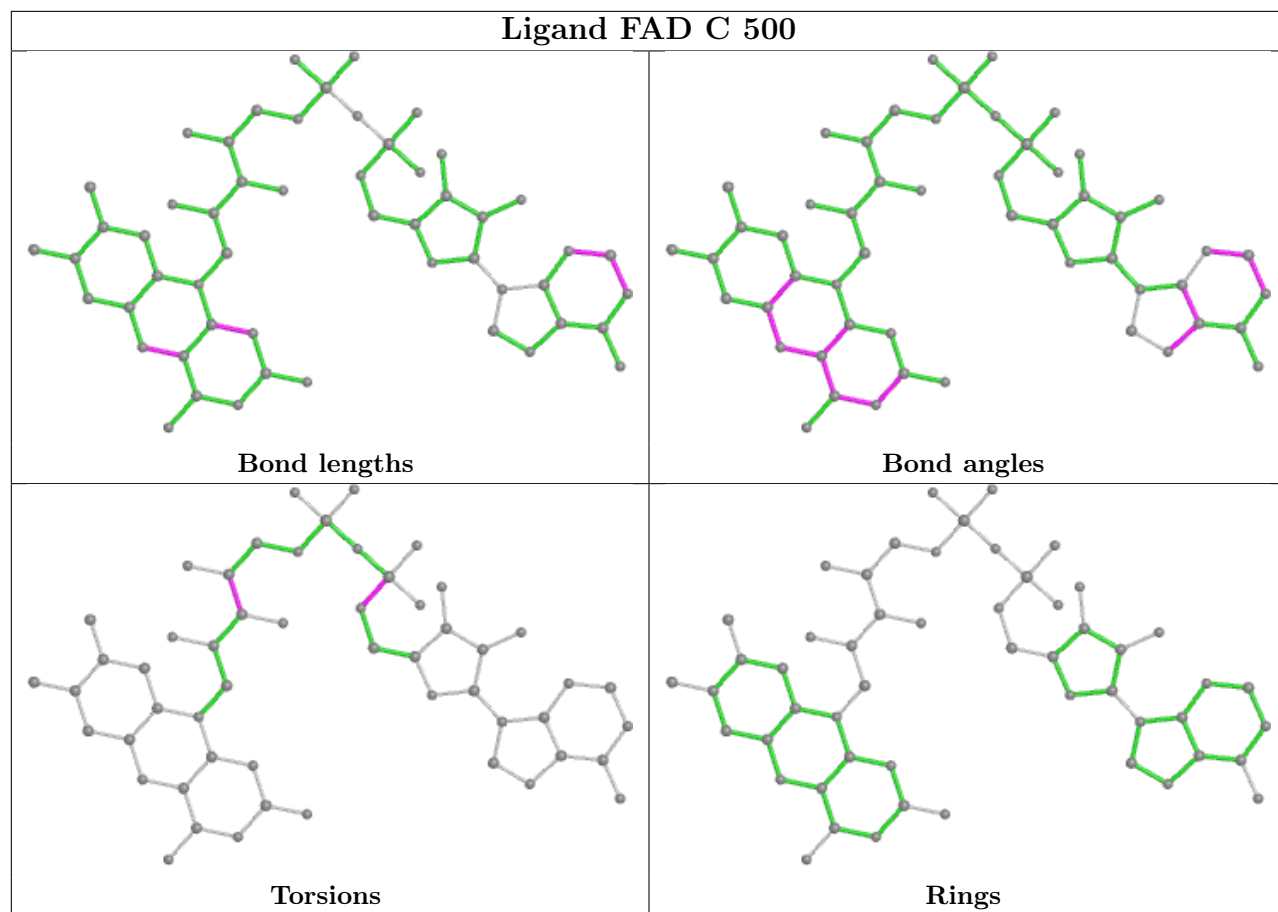
11 monomers are involved in 25 short contacts:

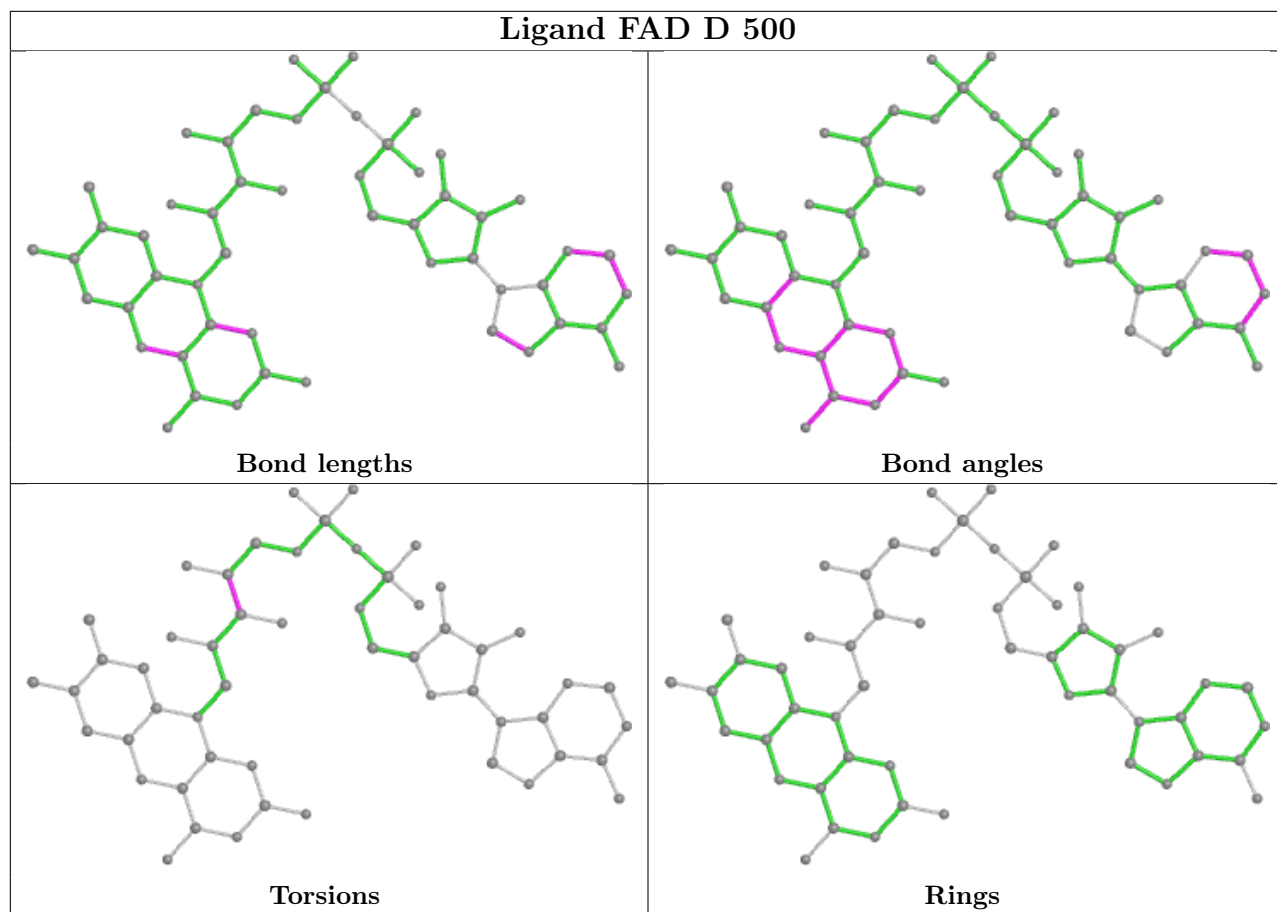
Mol	Chain	Res	Type	Clashes	Symm-Clashes
4	A	701	GOL	1	0
2	B	500	FAD	2	0
2	C	500	FAD	3	0
4	B	701	GOL	1	0
4	C	701	GOL	2	0
2	D	500	FAD	2	0
2	A	500	FAD	3	0
3	A	600	N6C	2	0
4	D	701	GOL	1	0
3	B	600	N6C	7	0
3	D	600	N6C	2	0

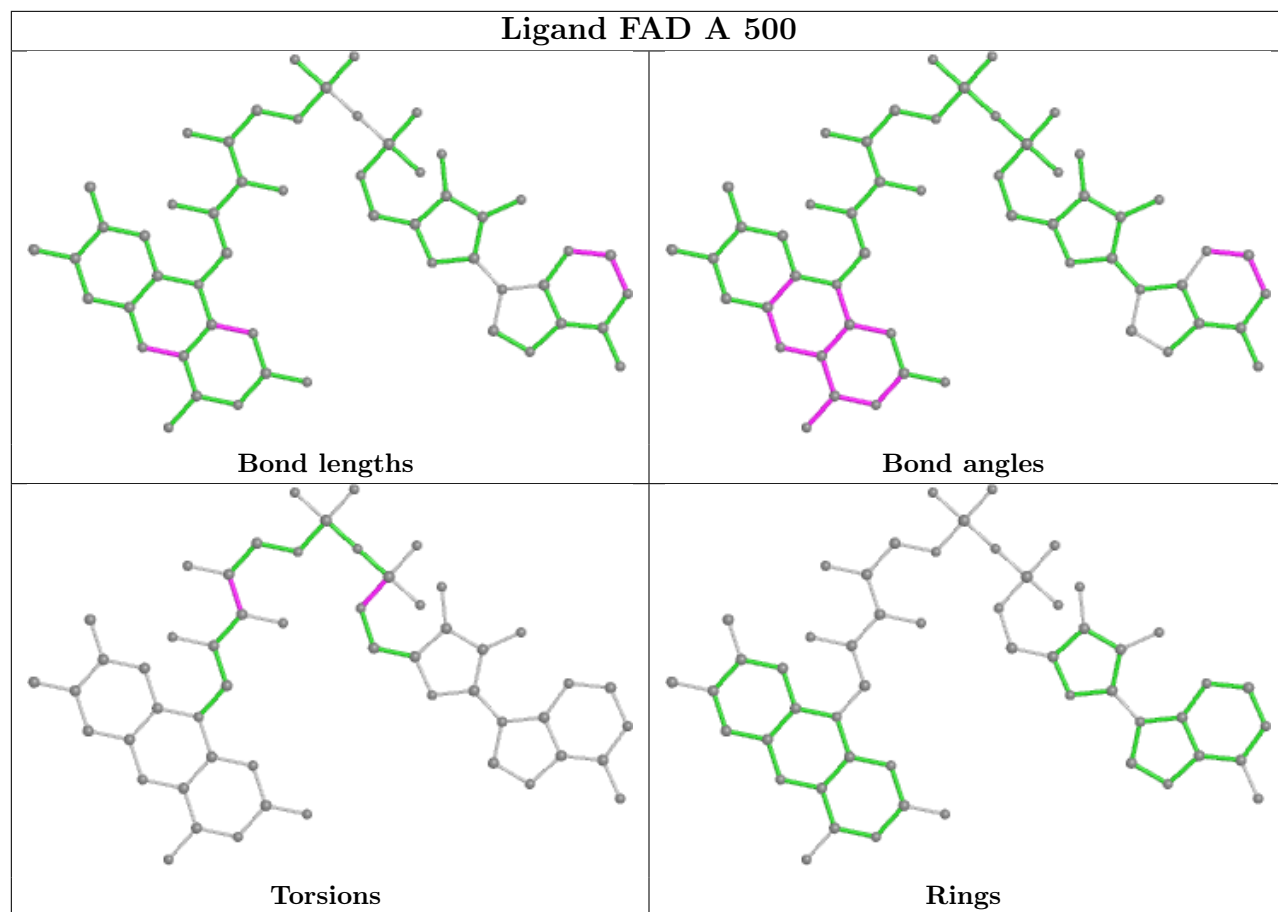
The following is a two-dimensional graphical depiction of Mogul quality analysis of bond lengths, bond angles, torsion angles, and ring geometry for all instances of the Ligand of Interest. In

addition, ligands with molecular weight > 250 and outliers as shown on the validation Tables will also be included. For torsion angles, if less than 5% of the Mogul distribution of torsion angles is within 10 degrees of the torsion angle in question, then that torsion angle is considered an outlier. Any bond that is central to one or more torsion angles identified as an outlier by Mogul will be highlighted in the graph. For rings, the root-mean-square deviation (RMSD) between the ring in question and similar rings identified by Mogul is calculated over all ring torsion angles. If the average RMSD is greater than 60 degrees and the minimal RMSD between the ring in question and any Mogul-identified rings is also greater than 60 degrees, then that ring is considered an outlier. The outliers are highlighted in purple. The color gray indicates Mogul did not find sufficient equivalents in the CSD to analyse the geometry.









5.7 Other polymers [i](#)

There are no such residues in this entry.

5.8 Polymer linkage issues [i](#)

There are no chain breaks in this entry.

6 Fit of model and data

6.1 Protein, DNA and RNA chains

In the following table, the column labelled ‘#RSRZ > 2’ contains the number (and percentage) of RSRZ outliers, followed by percent RSRZ outliers for the chain as percentile scores relative to all X-ray entries and entries of similar resolution. The OWAB column contains the minimum, median, 95th percentile and maximum values of the occupancy-weighted average B-factor per residue. The column labelled ‘Q < 0.9’ lists the number of (and percentage) of residues with an average occupancy less than 0.9.

Mol	Chain	Analysed	<RSRZ>	#RSRZ>2	OWAB(Å ²)	Q<0.9
1	A	432/438 (98%)	0.18	19 (4%) 34 40	25, 36, 51, 63	1 (0%)
1	B	431/438 (98%)	0.25	22 (5%) 28 33	25, 37, 51, 61	1 (0%)
1	C	430/438 (98%)	-0.05	6 (1%) 75 78	24, 33, 49, 66	1 (0%)
1	D	431/438 (98%)	-0.05	9 (2%) 63 68	25, 33, 47, 57	2 (0%)
All	All	1724/1752 (98%)	0.08	56 (3%) 47 54	24, 35, 49, 66	5 (0%)

All (56) RSRZ outliers are listed below:

Mol	Chain	Res	Type	RSRZ
1	C	195	SER	4.2
1	A	224	ASP	4.0
1	A	371	ILE	3.9
1	A	195	SER	3.8
1	C	431	SER	3.7
1	B	197	PRO	3.7
1	A	196	LYS	3.6
1	B	367	VAL	3.5
1	B	224	ASP	3.5
1	C	30	ALA	3.4
1	D	197	PRO	3.3
1	A	367	VAL	3.3
1	D	196	LYS	3.3
1	B	202	VAL	3.3
1	B	371	ILE	3.2
1	A	223	LYS	3.1
1	B	203	ASP	3.1
1	B	193	ASP	3.0
1	B	365	VAL	3.0
1	A	34	THR	3.0
1	B	195	SER	3.0

Continued on next page...

Continued from previous page...

Mol	Chain	Res	Type	RSRZ
1	B	200	PRO	2.9
1	B	370	VAL	2.9
1	B	36	LYS	2.8
1	D	195	SER	2.8
1	B	223	LYS	2.7
1	A	365	VAL	2.6
1	A	248	THR	2.5
1	D	194	PRO	2.5
1	A	194	PRO	2.5
1	B	201	ASN	2.4
1	C	54	ARG	2.4
1	D	365	VAL	2.4
1	B	395	VAL	2.4
1	A	202	VAL	2.4
1	A	192	ASP	2.3
1	A	199	ASP	2.3
1	B	366	ALA	2.3
1	D	202	VAL	2.3
1	B	8	PRO	2.3
1	B	124	GLU	2.3
1	B	369	CYS	2.2
1	C	23	THR	2.2
1	A	395	VAL	2.2
1	B	54	ARG	2.2
1	B	123	GLY	2.2
1	A	54	ARG	2.2
1	A	193	ASP	2.1
1	A	432	SER	2.1
1	D	367	VAL	2.1
1	A	147	GLY	2.1
1	A	8	PRO	2.0
1	B	392	LEU	2.0
1	C	420	GLU	2.0
1	D	36	LYS	2.0
1	D	223	LYS	2.0

6.2 Non-standard residues in protein, DNA, RNA chains

There are no non-standard protein/DNA/RNA residues in this entry.

6.3 Carbohydrates [i](#)

There are no monosaccharides in this entry.

6.4 Ligands [i](#)

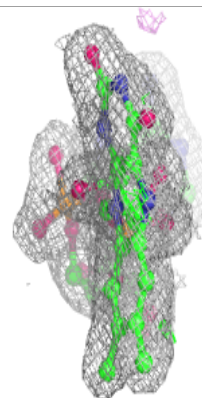
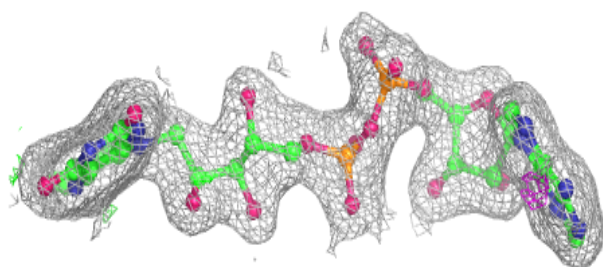
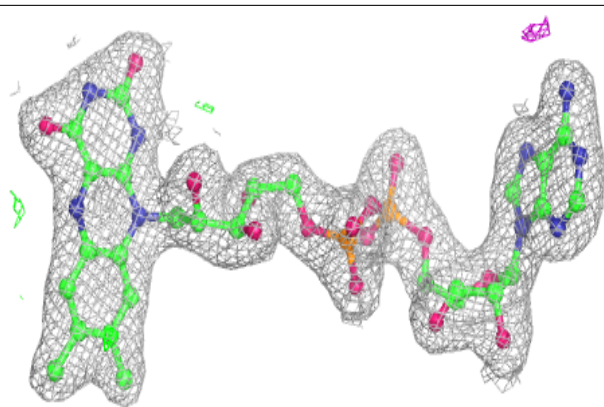
In the following table, the Atoms column lists the number of modelled atoms in the group and the number defined in the chemical component dictionary. The B-factors column lists the minimum, median, 95th percentile and maximum values of B factors of atoms in the group. The column labelled 'Q< 0.9' lists the number of atoms with occupancy less than 0.9.

Mol	Type	Chain	Res	Atoms	RSCC	RSR	B-factors(Å ²)	Q<0.9
3	N6C	C	600	9/9	0.85	0.23	46,48,53,55	0
3	N6C	D	600	9/9	0.86	0.20	43,44,45,46	0
3	N6C	A	600	9/9	0.87	0.21	48,50,51,52	0
3	N6C	B	600	9/9	0.88	0.23	53,55,56,58	0
4	GOL	B	701	6/6	0.91	0.13	56,58,58,58	0
4	GOL	D	701	6/6	0.92	0.21	53,54,55,56	0
4	GOL	C	701	6/6	0.93	0.12	48,54,55,56	0
4	GOL	A	701	6/6	0.94	0.16	52,54,55,57	0
4	GOL	A	700	6/6	0.94	0.12	35,37,37,38	0
4	GOL	D	700	6/6	0.95	0.11	29,31,32,33	0
4	GOL	B	700	6/6	0.96	0.12	35,38,38,39	0
2	FAD	D	500	53/53	0.97	0.10	23,27,31,32	0
4	GOL	C	700	6/6	0.97	0.11	29,32,33,35	0
2	FAD	A	500	53/53	0.97	0.10	25,30,34,36	0
2	FAD	B	500	53/53	0.97	0.09	27,31,34,38	0
2	FAD	C	500	53/53	0.98	0.12	23,28,31,33	0

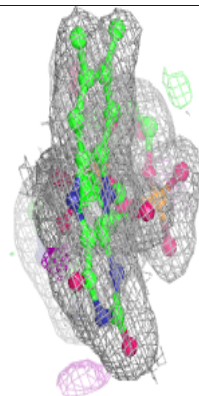
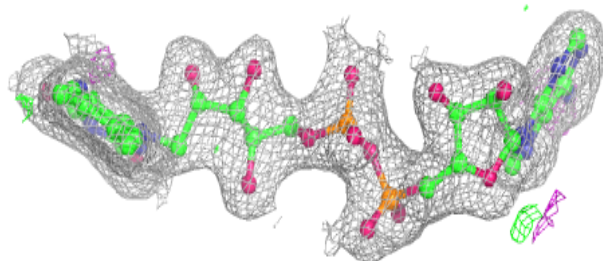
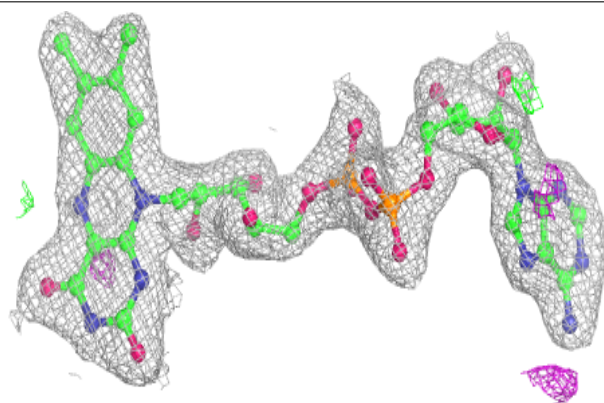
The following is a graphical depiction of the model fit to experimental electron density of all instances of the Ligand of Interest. In addition, ligands with molecular weight > 250 and outliers as shown on the geometry validation Tables will also be included. Each fit is shown from different orientation to approximate a three-dimensional view.

Electron density around FAD D 500:

$2mF_o-DF_c$ (at 0.7 rmsd) in gray
 mF_o-DF_c (at 3 rmsd) in purple (negative)
and green (positive)

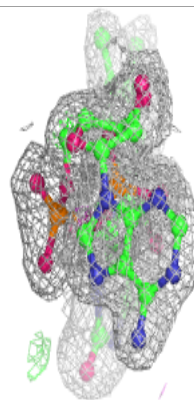
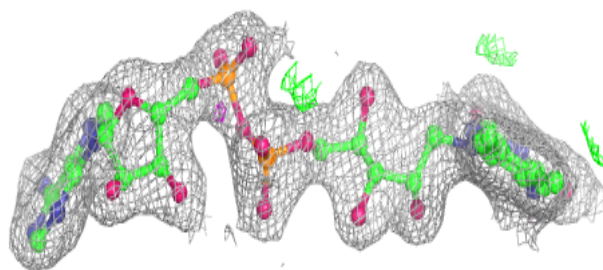
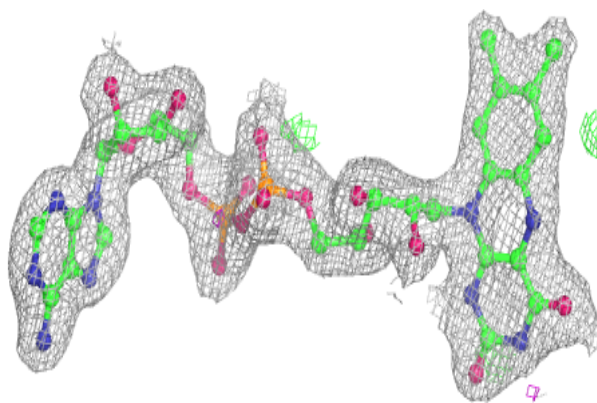
**Electron density around FAD A 500:**

$2mF_o-DF_c$ (at 0.7 rmsd) in gray
 mF_o-DF_c (at 3 rmsd) in purple (negative)
and green (positive)

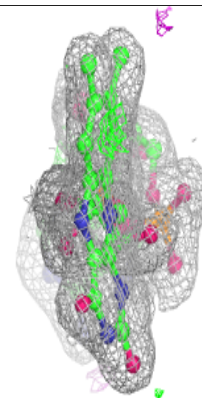
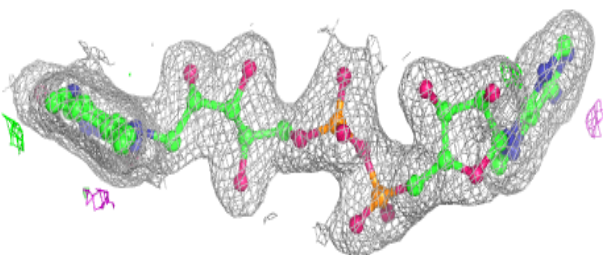
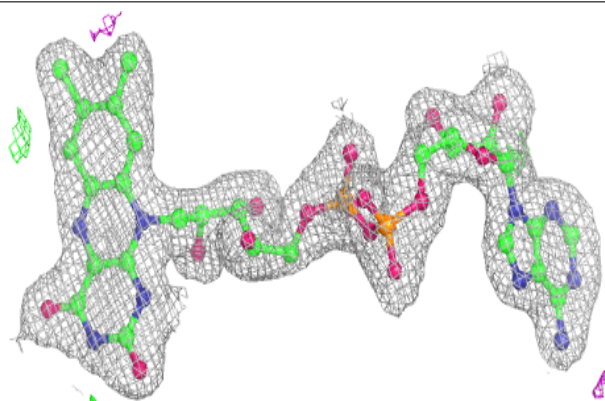


Electron density around FAD B 500:

$2mF_o-DF_c$ (at 0.7 rmsd) in gray
 mF_o-DF_c (at 3 rmsd) in purple (negative)
and green (positive)

**Electron density around FAD C 500:**

$2mF_o-DF_c$ (at 0.7 rmsd) in gray
 mF_o-DF_c (at 3 rmsd) in purple (negative)
and green (positive)



6.5 Other polymers [i](#)

There are no such residues in this entry.