



Full wwPDB X-ray Structure Validation Report ⓘ

Nov 20, 2023 – 07:21 PM JST

PDB ID : 7D92
Title : Crystal Structure of the Na⁺,K⁺-ATPase in the E2P state with bound Mg²⁺ and anthrolyouabain (P4(3)2(1)2 symmetry)
Authors : Kanai, R.; Cornelius, F.; Ogawa, H.; Motoyama, K.; Vilsen, B.; Toyoshima, C.
Deposited on : 2020-10-12
Resolution : 3.90 Å(reported)

This is a Full wwPDB X-ray Structure Validation Report for a publicly released PDB entry.

We welcome your comments at validation@mail.wwpdb.org

A user guide is available at

<https://www.wwpdb.org/validation/2017/XrayValidationReportHelp>

with specific help available everywhere you see the ⓘ symbol.

The types of validation reports are described at

<http://www.wwpdb.org/validation/2017/FAQs#types>.

The following versions of software and data (see [references ⓘ](#)) were used in the production of this report:

MolProbity : 4.02b-467
Mogul : 1.8.5 (274361), CSD as541be (2020)
Xtriage (Phenix) : 1.13
EDS : 2.36
buster-report : 1.1.7 (2018)
Percentile statistics : 20191225.v01 (using entries in the PDB archive December 25th 2019)
Refmac : 5.8.0158
CCP4 : 7.0.044 (Gargrove)
Ideal geometry (proteins) : Engh & Huber (2001)
Ideal geometry (DNA, RNA) : Parkinson et al. (1996)
Validation Pipeline (wwPDB-VP) : 2.36

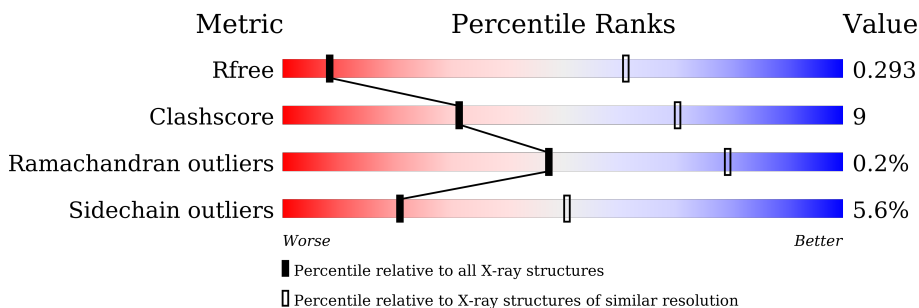
1 Overall quality at a glance

The following experimental techniques were used to determine the structure:

X-RAY DIFFRACTION

The reported resolution of this entry is 3.90 Å.

Percentile scores (ranging between 0-100) for global validation metrics of the entry are shown in the following graphic. The table shows the number of entries on which the scores are based.



Metric	Whole archive (#Entries)	Similar resolution (#Entries, resolution range(Å))
R_{free}	130704	1002 (4.14-3.66)
Clashscore	141614	1004 (4.12-3.68)
Ramachandran outliers	138981	1021 (4.14-3.66)
Sidechain outliers	138945	1014 (4.14-3.66)

The table below summarises the geometric issues observed across the polymeric chains and their fit to the electron density. The red, orange, yellow and green segments of the lower bar indicate the fraction of residues that contain outliers for ≥ 3 , 2, 1 and 0 types of geometric quality criteria respectively. A grey segment represents the fraction of residues that are not modelled. The numeric value for each fraction is indicated below the corresponding segment, with a dot representing fractions $\leq 5\%$.

Mol	Chain	Length	Quality of chain
1	A	1016	 74% 23% ..
2	B	303	 66% 27% . .
3	G	65	 42% 8% 51%
4	C	2	 100%

2 Entry composition [i](#)

There are 10 unique types of molecules in this entry. The entry contains 10740 atoms, of which 0 are hydrogens and 0 are deuteriums.

In the tables below, the ZeroOcc column contains the number of atoms modelled with zero occupancy, the AltConf column contains the number of residues with at least one atom in alternate conformation and the Trace column contains the number of residues modelled with at most 2 atoms.

- Molecule 1 is a protein called Sodium/potassium-transporting ATPase subunit alpha-1.

Mol	Chain	Residues	Atoms							ZeroOcc	AltConf	Trace
			Total	Be	C	F	N	O	S			
1	A	996	7730	1	4922	3	1301	1456	47	0	0	0

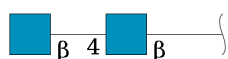
- Molecule 2 is a protein called Sodium/potassium-transporting ATPase subunit beta-1.

Mol	Chain	Residues	Atoms					ZeroOcc	AltConf	Trace
			Total	C	N	O	S			
2	B	291	2386	1546	390	437	13	0	0	0

- Molecule 3 is a protein called FXYD domain-containing ion transport regulator.

Mol	Chain	Residues	Atoms				ZeroOcc	AltConf	Trace
			Total	C	N	O			
3	G	32	255	174	37	44	0	0	0

- Molecule 4 is an oligosaccharide called 2-acetamido-2-deoxy-beta-D-glucopyranose-(1-4)-2-acetamido-2-deoxy-beta-D-glucopyranose.

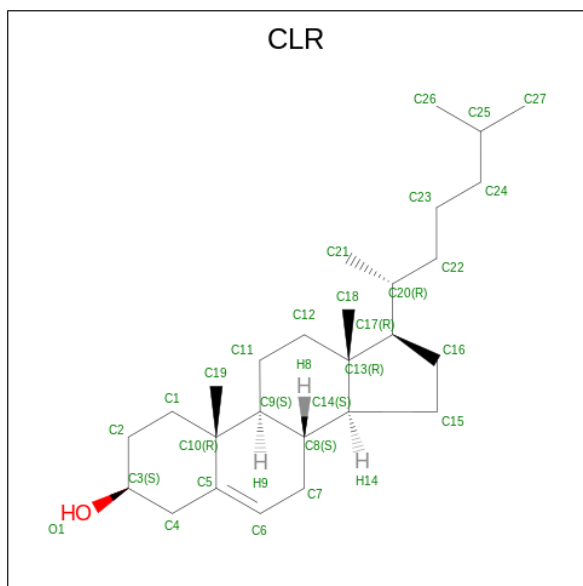


Mol	Chain	Residues	Atoms				ZeroOcc	AltConf	Trace
			Total	C	N	O			
4	C	2	28	16	2	10	0	0	0

- Molecule 5 is MAGNESIUM ION (three-letter code: MG) (formula: Mg).

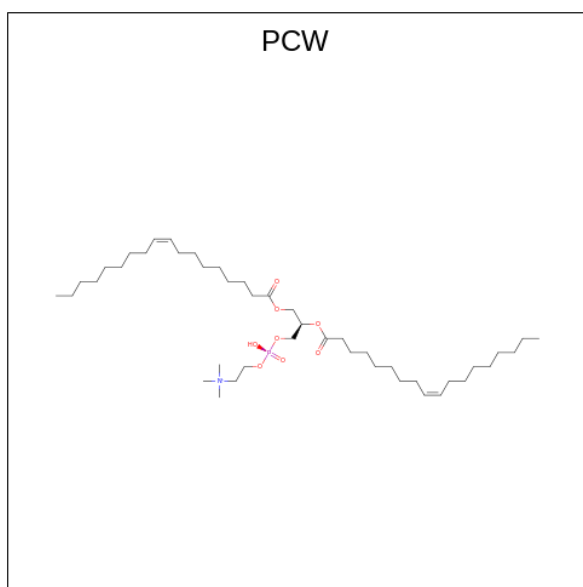
Mol	Chain	Residues	Atoms		ZeroOcc	AltConf
5	A	3	Total	Mg	0	0
			3	3		

- Molecule 6 is CHOLESTEROL (three-letter code: CLR) (formula: $C_{27}H_{46}O$).



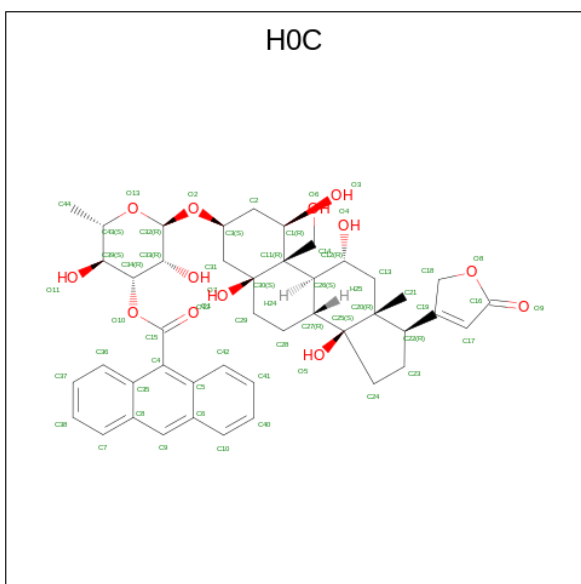
Mol	Chain	Residues	Atoms		ZeroOcc	AltConf
6	A	1	Total	C O	0	0
			28	27 1		
6	B	1	Total	C O	0	0
			28	27 1		
6	G	1	Total	C O	0	0
			28	27 1		

- Molecule 7 is 1,2-DIOLEOYL-SN-GLYCERO-3-PHOSPHOCHOLINE (three-letter code: PCW) (formula: $C_{44}H_{85}NO_8P$).



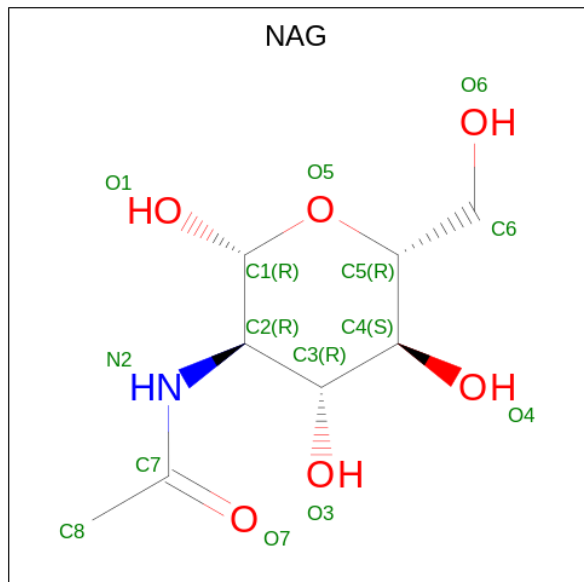
Mol	Chain	Residues	Atoms					ZeroOcc	AltConf
7	A	1	Total	C	N	O	P	0	0
			22	12	1	8	1		
7	A	1	Total	C	N	O	P	0	0
			22	12	1	8	1		
7	A	1	Total	C	N	O	P	0	0
			22	12	1	8	1		
7	A	1	Total	C	N	O	P	0	0
			22	12	1	8	1		
7	A	1	Total	C	N	O	P	0	0
			22	12	1	8	1		
7	A	1	Total	C	N	O	P	0	0
			22	12	1	8	1		
7	A	1	Total	C	N	O	P	0	0
			22	12	1	8	1		

- Molecule 8 is [(2 {R},3 {R},4 {R},5 {S},6 {S})-2-[(1 {R},3 {S},5 {S},8 {R},9 {S},10 {R},11 {R},13 {R},14 {S},17 {R})-10-(hydroxymethyl)-13-methyl-1,5,11,14-tetrakis(oxidanyl)-17-(5-oxidanylidene-2 {H}-furan-3-yl)-2,3,4,6,7,8,9,11,12,15,16,17-dodecahydro-1 {H}-cyclopenta[a]phenanthren-3-yl]oxy]-6-methyl-3,5-bis(oxidanyl)oxan-4-yl] anthracene-9-carboxylate (three-letter code: HOC) (formula: C₄₄H₅₂O₁₃) (labeled as "Ligand of Interest" by depositor).



Mol	Chain	Residues	Atoms			ZeroOcc	AltConf
8	A	1	Total	C	O	0	0
			57	44	13		

- Molecule 9 is 2-acetamido-2-deoxy-beta-D-glucopyranose (three-letter code: NAG) (formula: $C_8H_{15}NO_6$).



Mol	Chain	Residues	Atoms				ZeroOcc	AltConf
			Total	C	N	O		
9	B	1	14	8	1	5	0	0

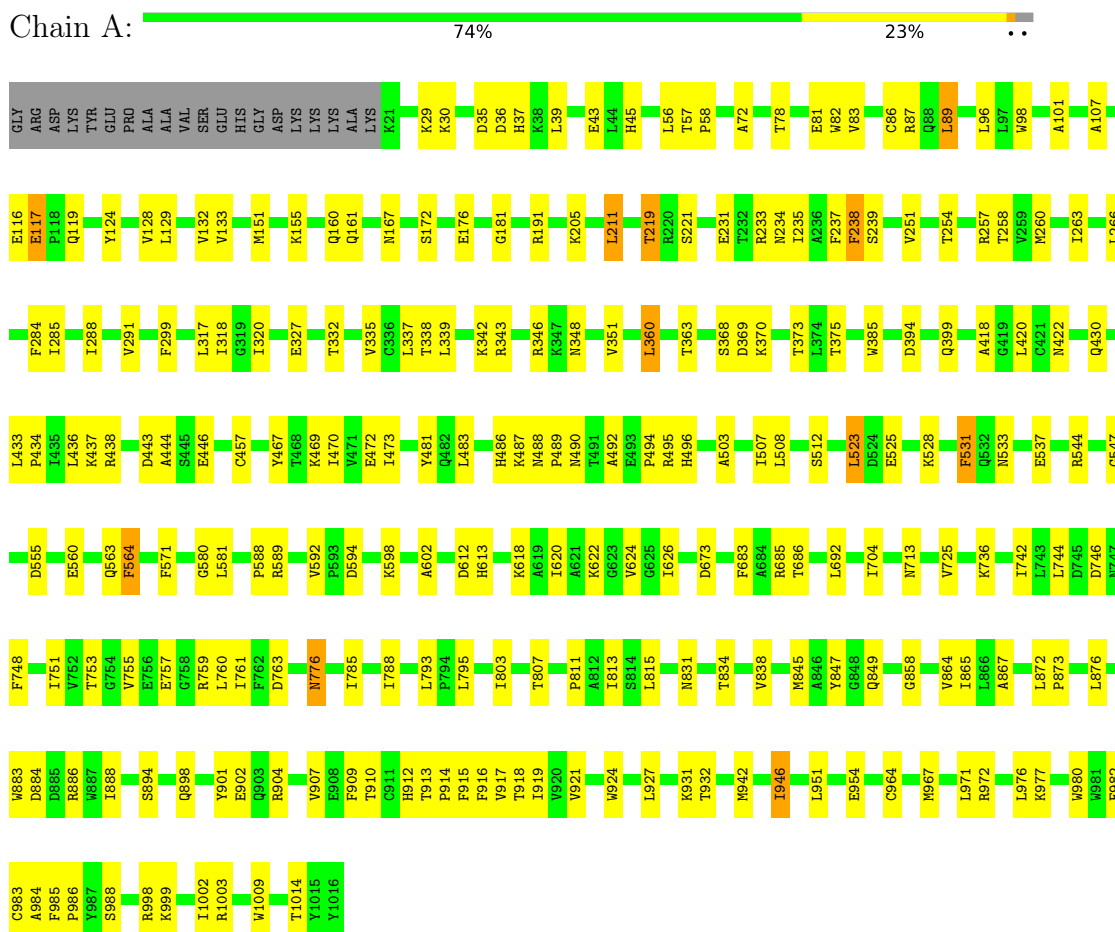
- Molecule 10 is water.

Mol	Chain	Residues	Atoms		ZeroOcc	AltConf
			Total	O		
10	A	7	7	7	0	0

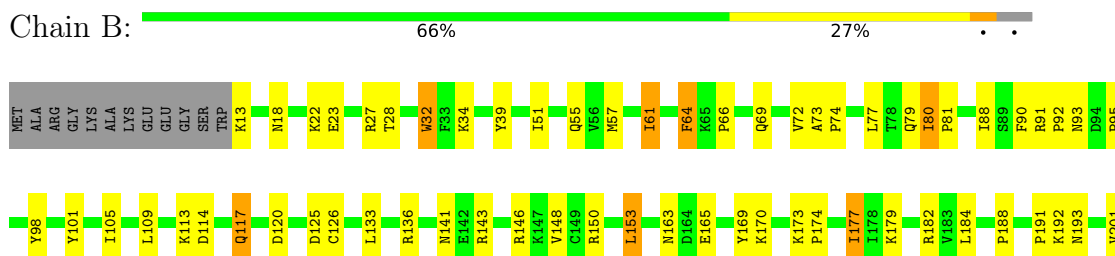
3 Residue-property plots

These plots are drawn for all protein, RNA, DNA and oligosaccharide chains in the entry. The first graphic for a chain summarises the proportions of the various outlier classes displayed in the second graphic. The second graphic shows the sequence view annotated by issues in geometry. Residues are color-coded according to the number of geometric quality criteria for which they contain at least one outlier: green = 0, yellow = 1, orange = 2 and red = 3 or more. Stretches of 2 or more consecutive residues without any outlier are shown as a green connector. Residues present in the sample, but not in the model, are shown in grey.

- Molecule 1: Sodium/potassium-transporting ATPase subunit alpha-1



- Molecule 2: Sodium/potassium-transporting ATPase subunit beta-1





- Molecule 3: FXYP domain-containing ion transport regulator



- Molecule 4: 2-acetamido-2-deoxy-beta-D-glucopyranose-(1-4)-2-acetamido-2-deoxy-beta-D-glucopyranose



4 Data and refinement statistics

Property	Value	Source
Space group	P 43 21 2	Depositor
Cell constants a, b, c, α , β , γ	84.23Å 84.23Å 646.26Å 90.00° 90.00° 90.00°	Depositor
Resolution (Å)	14.94 – 3.90 48.19 – 3.90	Depositor EDS
% Data completeness (in resolution range)	41.4 (14.94-3.90) 42.5 (48.19-3.90)	Depositor EDS
R_{merge}	0.22	Depositor
R_{sym}	(Not available)	Depositor
$\langle I/\sigma(I) \rangle$ ¹	1.21 (at 3.88Å)	Xtrriage
Refinement program	PHENIX 1.17.1_3660	Depositor
R, R_{free}	0.209 , 0.257 0.249 , 0.293	Depositor DCC
R_{free} test set	484 reflections (5.01%)	wwPDB-VP
Wilson B-factor (Å ²)	112.6	Xtrriage
Anisotropy	0.653	Xtrriage
Bulk solvent k_{sol} (e/Å ³), B_{sol} (Å ²)	0.28 , 64.9	EDS
L-test for twinning ²	$\langle L \rangle = 0.42$, $\langle L^2 \rangle = 0.25$	Xtrriage
Estimated twinning fraction	No twinning to report.	Xtrriage
F_o, F_c correlation	0.84	EDS
Total number of atoms	10740	wwPDB-VP
Average B, all atoms (Å ²)	149.0	wwPDB-VP

Xtrriage's analysis on translational NCS is as follows: *The largest off-origin peak in the Patterson function is 4.05% of the height of the origin peak. No significant pseudotranslation is detected.*

¹Intensities estimated from amplitudes.

²Theoretical values of $\langle |L| \rangle$, $\langle L^2 \rangle$ for acentric reflections are 0.5, 0.333 respectively for untwinned datasets, and 0.375, 0.2 for perfectly twinned datasets.

5 Model quality [i](#)

5.1 Standard geometry [i](#)

Bond lengths and bond angles in the following residue types are not validated in this section: MG, PCW, BFD, NAG, CLR, H0C

The Z score for a bond length (or angle) is the number of standard deviations the observed value is removed from the expected value. A bond length (or angle) with $|Z| > 5$ is considered an outlier worth inspection. RMSZ is the root-mean-square of all Z scores of the bond lengths (or angles).

Mol	Chain	Bond lengths		Bond angles	
		RMSZ	# Z >5	RMSZ	# Z >5
1	A	0.29	0/7867	0.50	1/10674 (0.0%)
2	B	0.30	0/2449	0.54	0/3301
3	G	0.29	0/261	0.42	0/354
All	All	0.29	0/10577	0.51	1/14329 (0.0%)

There are no bond length outliers.

All (1) bond angle outliers are listed below:

Mol	Chain	Res	Type	Atoms	Z	Observed(°)	Ideal(°)
1	A	492	ALA	C-N-CA	6.27	137.38	121.70

There are no chirality outliers.

There are no planarity outliers.

5.2 Too-close contacts [i](#)

In the following table, the Non-H and H(model) columns list the number of non-hydrogen atoms and hydrogen atoms in the chain respectively. The H(added) column lists the number of hydrogen atoms added and optimized by MolProbity. The Clashes column lists the number of clashes within the asymmetric unit, whereas Symm-Clashes lists symmetry-related clashes.

Mol	Chain	Non-H	H(model)	H(added)	Clashes	Symm-Clashes
1	A	7730	0	7777	134	0
2	B	2386	0	2362	57	0
3	G	255	0	259	6	0
4	C	28	0	25	0	0
5	A	3	0	0	0	0
6	A	28	0	46	2	0
6	B	28	0	46	2	0

Continued on next page...

Continued from previous page...

Mol	Chain	Non-H	H(model)	H(added)	Clashes	Symm-Clashes
6	G	28	0	46	6	0
7	A	176	0	144	1	0
8	A	57	0	0	0	0
9	B	14	0	13	0	0
10	A	7	0	0	1	0
All	All	10740	0	10718	194	0

The all-atom clashscore is defined as the number of clashes found per 1000 atoms (including hydrogen atoms). The all-atom clashscore for this structure is 9.

All (194) close contacts within the same asymmetric unit are listed below, sorted by their clash magnitude.

Atom-1	Atom-2	Interatomic distance (Å)	Clash overlap (Å)
1:A:864:VAL:HG22	2:B:57:MET:HG3	1.59	0.83
1:A:807:THR:HB	1:A:954:GLU:HG3	1.64	0.78
2:B:80:ILE:HG12	2:B:177:ILE:HG12	1.63	0.77
1:A:399:GLN:HE21	1:A:436:LEU:HD11	1.50	0.76
2:B:113:LYS:HA	2:B:153:LEU:HD11	1.72	0.71
1:A:998:ARG:HE	1:A:1014:THR:HB	1.55	0.71
1:A:508:LEU:HD11	1:A:528:LYS:HE2	1.71	0.70
1:A:155:LYS:HE2	1:A:736:LYS:HE3	1.73	0.69
1:A:931:LYS:HE3	1:A:942:MET:HA	1.73	0.69
1:A:725:VAL:HG11	1:A:751:ILE:HD11	1.76	0.68
1:A:418:ALA:O	1:A:422:ASN:ND2	2.27	0.67
1:A:918:THR:HG23	1:A:984:ALA:HB2	1.78	0.66
1:A:469:LYS:HD3	1:A:472:GLU:HB3	1.79	0.65
1:A:420:LEU:HB3	1:A:486:HIS:CE1	2.32	0.64
1:A:238:PHE:HD2	1:A:258:THR:HG21	1.62	0.64
1:A:946:ILE:HD13	3:G:45:ILE:HD11	1.80	0.64
1:A:375:THR:HA	1:A:588:PRO:HA	1.79	0.63
1:A:865:ILE:HD12	1:A:914:PRO:HG3	1.81	0.61
2:B:191:PRO:HD3	2:B:280:GLY:HA2	1.81	0.61
2:B:80:ILE:HD11	2:B:177:ILE:H	1.66	0.61
1:A:811:PRO:HB3	1:A:927:LEU:HD22	1.82	0.60
1:A:531:PHE:HE1	1:A:581:LEU:HD21	1.67	0.60
1:A:72:ALA:HB2	1:A:176:GLU:HG2	1.83	0.60
2:B:204:TYR:HE1	2:B:207:TYR:HB2	1.68	0.59
1:A:37:HIS:HB3	1:A:235:ILE:HD11	1.84	0.59
1:A:317:LEU:HA	1:A:320:ILE:HD12	1.86	0.58
1:A:360:LEU:HD12	1:A:755:VAL:HB	1.86	0.58
1:A:845:MET:SD	1:A:849:GLN:NE2	2.77	0.57

Continued on next page...

Continued from previous page...

Atom-1	Atom-2	Interatomic distance (Å)	Clash overlap (Å)
1:A:348:ASN:HB3	1:A:744:LEU:HB2	1.86	0.56
1:A:858:GLY:HA2	1:A:918:THR:HG21	1.88	0.56
1:A:254:THR:HG23	1:A:257:ARG:HH21	1.70	0.56
1:A:525:GLU:HA	1:A:528:LYS:HB3	1.88	0.56
1:A:986:PRO:HG3	6:A:1104:CLR:H122	1.86	0.56
1:A:430:GLN:HA	1:A:433:LEU:HD13	1.86	0.55
2:B:280:GLY:HA3	2:B:283:ILE:HD13	1.88	0.55
2:B:224:VAL:HG21	2:B:274:ILE:HD11	1.88	0.55
1:A:831:ASN:HB3	1:A:834:THR:HB	1.88	0.55
1:A:117:GLU:OE1	1:A:886:ARG:NH2	2.39	0.55
1:A:181:GLY:H	1:A:251:VAL:HB	1.72	0.55
2:B:209:LEU:HD21	2:B:283:ILE:HD11	1.89	0.54
2:B:276:CYS:HB2	2:B:295:PHE:HD2	1.72	0.54
1:A:83:VAL:O	1:A:87:ARG:HG2	2.07	0.54
2:B:39:TYR:CZ	6:B:501:CLR:H191	2.42	0.54
1:A:420:LEU:HB3	1:A:486:HIS:HE1	1.70	0.54
2:B:80:ILE:HB	2:B:105:ILE:HD12	1.90	0.54
1:A:488:ASN:ND2	1:A:494:PRO:HD2	2.23	0.54
2:B:136:ARG:O	2:B:146:ARG:NH1	2.41	0.54
1:A:420:LEU:HD13	1:A:486:HIS:HD1	1.73	0.54
1:A:332:THR:HA	1:A:813:ILE:HD11	1.90	0.54
1:A:512:SER:HA	1:A:523:LEU:HD23	1.89	0.53
1:A:612:ASP:OD1	1:A:613:HIS:N	2.42	0.53
2:B:217:ARG:HH12	2:B:273:ARG:HD2	1.74	0.53
1:A:434:PRO:HG2	1:A:437:LYS:HB2	1.91	0.53
1:A:907:VAL:HA	1:A:910:THR:HG22	1.89	0.52
2:B:148:VAL:HG11	2:B:254:TYR:HA	1.92	0.52
1:A:982:PHE:HA	1:A:985:PHE:HD1	1.74	0.52
2:B:109:LEU:HD23	2:B:153:LEU:HD23	1.91	0.52
2:B:213:CYS:HA	2:B:276:CYS:HA	1.92	0.52
1:A:913:THR:HB	1:A:976:LEU:HD21	1.93	0.51
1:A:932:THR:OG1	1:A:999:LYS:NZ	2.37	0.51
1:A:589:ARG:HB2	1:A:592:VAL:HG23	1.93	0.51
1:A:161:GLN:HE21	1:A:172:SER:HB3	1.76	0.50
1:A:205:LYS:HA	1:A:219:THR:HA	1.93	0.50
2:B:188:PRO:HB3	2:B:209:LEU:HD22	1.93	0.50
1:A:430:GLN:HG3	1:A:438:ARG:HB2	1.94	0.50
1:A:469:LYS:HE2	1:A:486:HIS:NE2	2.27	0.50
1:A:785:ILE:HA	1:A:788:ILE:HB	1.93	0.50
2:B:92:PRO:HG3	2:B:301:VAL:HG12	1.94	0.50
1:A:385:TRP:O	1:A:580:GLY:HA3	2.12	0.49

Continued on next page...

Continued from previous page...

Atom-1	Atom-2	Interatomic distance (Å)	Clash overlap (Å)
7:A:1107:PCW:C31	6:B:501:CLR:H3	2.41	0.49
1:A:776:ASN:HB3	1:A:847:TYR:HE1	1.77	0.49
2:B:101:TYR:O	2:B:105:ILE:HG12	2.13	0.49
1:A:917:VAL:O	1:A:921:VAL:HG23	2.13	0.49
3:G:33:PHE:CZ	6:G:101:CLR:H151	2.47	0.49
1:A:211:LEU:HD13	1:A:237:PHE:HB3	1.93	0.48
1:A:867:ALA:HB2	1:A:873:PRO:HD3	1.95	0.48
1:A:373:THR:HG22	1:A:748:PHE:HE1	1.77	0.48
2:B:117:GLN:O	2:B:150:ARG:NH1	2.47	0.48
2:B:266:LEU:HD22	2:B:272:ILE:HD11	1.93	0.48
1:A:873:PRO:HA	1:A:876:LEU:HD12	1.94	0.48
2:B:120:ASP:OD1	2:B:150:ARG:NH2	2.46	0.48
1:A:238:PHE:HD1	1:A:239:SER:N	2.12	0.48
1:A:815:LEU:HD11	1:A:931:LYS:HA	1.94	0.48
1:A:964:CYS:HB3	1:A:967:MET:HG2	1.94	0.48
1:A:982:PHE:HA	1:A:985:PHE:CD1	2.48	0.48
2:B:177:ILE:HA	2:B:260:ALA:HA	1.96	0.48
1:A:39:LEU:HD22	1:A:43:GLU:HG2	1.95	0.48
1:A:915:PHE:O	1:A:919:ILE:HG12	2.14	0.47
2:B:73:ALA:HB3	2:B:74:PRO:HD3	1.97	0.47
1:A:98:TRP:CE2	1:A:133:VAL:HG11	2.49	0.47
1:A:602:ALA:HB1	1:A:759:ARG:HH12	1.80	0.47
1:A:998:ARG:O	1:A:1002:ILE:HG13	2.14	0.47
1:A:776:ASN:ND2	10:A:1203:HOH:O	2.47	0.47
1:A:883:TRP:O	1:A:904:ARG:NH1	2.48	0.47
2:B:79:GLN:HB3	2:B:295:PHE:CZ	2.50	0.47
1:A:924:TRP:HH2	6:G:101:CLR:H162	1.80	0.47
1:A:160:GLN:HE22	1:A:191:ARG:HD3	1.80	0.47
1:A:977:LYS:HD2	1:A:980:TRP:CZ2	2.50	0.47
2:B:169:TYR:O	2:B:174:PRO:HA	2.15	0.46
1:A:495:ARG:O	1:A:496:HIS:ND1	2.48	0.46
1:A:107:ALA:HB2	1:A:318:ILE:HG21	1.98	0.46
2:B:182:ARG:HD2	2:B:245:TYR:CZ	2.50	0.46
1:A:86:CYS:HA	1:A:89:LEU:HB2	1.97	0.46
1:A:683:PHE:HB3	1:A:686:THR:HG21	1.97	0.46
1:A:924:TRP:CD1	1:A:951:LEU:HD22	2.51	0.46
1:A:470:ILE:HG21	1:A:564:PHE:CZ	2.52	0.45
1:A:921:VAL:HG12	1:A:988:SER:OG	2.16	0.45
3:G:42:LEU:HA	3:G:45:ILE:HG22	1.97	0.45
1:A:58:PRO:HD3	1:A:167:ASN:HB2	1.98	0.45
1:A:736:LYS:HG3	1:A:742:ILE:HD12	1.98	0.45

Continued on next page...

Continued from previous page...

Atom-1	Atom-2	Interatomic distance (Å)	Clash overlap (Å)
2:B:51:ILE:O	2:B:55:GLN:HG2	2.17	0.45
2:B:92:PRO:HD2	2:B:303:SER:HA	1.98	0.45
2:B:66:PRO:HG2	2:B:69:GLN:HG2	1.98	0.45
2:B:80:ILE:HD12	2:B:105:ILE:HD12	1.99	0.45
2:B:217:ARG:NH1	2:B:220:ASP:OD2	2.49	0.45
1:A:221:SER:H	1:A:233:ARG:HB3	1.82	0.45
1:A:101:ALA:HB2	1:A:129:LEU:HB2	1.99	0.44
1:A:488:ASN:OD1	1:A:494:PRO:HG2	2.17	0.44
2:B:80:ILE:H	2:B:80:ILE:HG13	1.49	0.44
1:A:299:PHE:HB3	1:A:320:ILE:HD13	1.99	0.44
2:B:61:ILE:H	2:B:61:ILE:HG13	1.58	0.44
1:A:618:LYS:HG2	1:A:622:LYS:HE3	1.99	0.44
1:A:363:THR:HA	1:A:704:ILE:HB	1.99	0.44
2:B:18:ASN:HA	2:B:23:GLU:O	2.18	0.44
1:A:211:LEU:O	1:A:713:ASN:HB3	2.18	0.43
1:A:337:LEU:HD23	1:A:761:ILE:HD13	2.00	0.43
1:A:473:ILE:HD12	1:A:483:LEU:HD11	2.00	0.43
1:A:37:HIS:HB2	1:A:234:ASN:HD21	1.83	0.43
1:A:231:GLU:HG2	1:A:685:ARG:HH11	1.83	0.43
2:B:88:ILE:HB	2:B:299:ILE:HG22	2.00	0.43
2:B:90:PHE:CZ	2:B:170:LYS:HG2	2.52	0.43
6:G:101:CLR:H162	6:G:101:CLR:H222	1.83	0.43
1:A:338:THR:O	1:A:342:LYS:HG3	2.17	0.43
1:A:872:LEU:HD23	1:A:894:SER:HB2	2.00	0.43
1:A:29:LYS:HB2	1:A:266:LEU:HD13	2.01	0.43
1:A:191:ARG:HE	1:A:239:SER:HA	1.83	0.43
1:A:983:CYS:SG	6:A:1104:CLR:H21	2.58	0.43
1:A:886:ARG:HA	1:A:901:TYR:CD1	2.54	0.43
1:A:931:LYS:HG2	1:A:932:THR:HG23	1.99	0.43
2:B:179:LYS:HE2	2:B:179:LYS:HB3	1.89	0.43
2:B:192:LYS:HB3	2:B:193:ASN:H	1.70	0.43
1:A:128:VAL:O	1:A:132:VAL:HG23	2.19	0.43
1:A:547:GLY:HA2	1:A:581:LEU:HD23	2.01	0.43
1:A:924:TRP:CH2	6:G:101:CLR:H162	2.54	0.43
2:B:77:LEU:HB3	2:B:295:PHE:HB2	2.01	0.43
1:A:30:LYS:HE2	1:A:692:LEU:HD21	2.00	0.43
1:A:446:GLU:N	1:A:446:GLU:OE1	2.51	0.43
1:A:564:PHE:HB3	1:A:571:PHE:HZ	1.83	0.43
1:A:753:THR:O	1:A:757:GLU:HG2	2.18	0.42
1:A:495:ARG:HB3	1:A:555:ASP:HB3	2.01	0.42
1:A:1009:TRP:CZ2	2:B:34:LYS:HB3	2.54	0.42

Continued on next page...

Continued from previous page...

Atom-1	Atom-2	Interatomic distance (Å)	Clash overlap (Å)
2:B:209:LEU:HD12	2:B:209:LEU:HA	1.82	0.42
1:A:594:ASP:O	1:A:598:LYS:HG2	2.20	0.42
1:A:813:ILE:HD13	1:A:813:ILE:HA	1.81	0.42
2:B:184:LEU:HA	2:B:245:TYR:HB3	2.01	0.42
1:A:443:ASP:OD1	1:A:444:ALA:N	2.52	0.42
1:A:370:LYS:NZ	1:A:620:ILE:HG13	2.33	0.42
1:A:888:ILE:O	1:A:904:ARG:NH2	2.53	0.42
3:G:33:PHE:CD2	6:G:101:CLR:H71	2.54	0.42
1:A:161:GLN:NE2	1:A:172:SER:HB3	2.35	0.42
1:A:803:ILE:HD13	1:A:803:ILE:HA	1.91	0.42
1:A:260:MET:HA	1:A:263:ILE:HD12	2.02	0.42
1:A:335:VAL:O	1:A:339:LEU:HG	2.20	0.42
1:A:337:LEU:HA	1:A:761:ILE:HD11	2.01	0.42
2:B:214:THR:OG1	2:B:215:GLY:N	2.53	0.42
2:B:227:MET:HG2	2:B:263:PHE:CD2	2.55	0.42
1:A:503:ALA:O	1:A:507:ILE:HG12	2.20	0.41
2:B:133:LEU:H	2:B:133:LEU:HD12	1.85	0.41
2:B:143:ARG:HD2	2:B:146:ARG:NH1	2.36	0.41
1:A:343:ARG:HH22	1:A:760:LEU:HD22	1.83	0.41
1:A:898:GLN:HE22	2:B:179:LYS:HE3	1.85	0.41
2:B:22:LYS:O	2:B:28:THR:HA	2.19	0.41
2:B:95:PRO:HA	2:B:98:TYR:CZ	2.54	0.41
1:A:284:PHE:CD1	1:A:838:VAL:HG21	2.55	0.41
1:A:368:SER:OG	1:A:369:BFD:N	2.53	0.41
3:G:33:PHE:CE2	6:G:101:CLR:H71	2.56	0.41
1:A:902:GLU:HB2	2:B:289:ASP:OD2	2.20	0.41
2:B:64:PHE:CZ	2:B:141:ASN:HB2	2.56	0.41
2:B:80:ILE:HD12	2:B:81:PRO:HD3	2.02	0.41
1:A:160:GLN:NE2	1:A:191:ARG:HD3	2.36	0.41
1:A:795:LEU:HD13	1:A:915:PHE:HB3	2.02	0.41
2:B:27:ARG:HG3	2:B:32:TRP:CD1	2.56	0.41
1:A:288:ILE:HD13	1:A:288:ILE:HA	1.82	0.41
1:A:793:LEU:O	1:A:912:HIS:NE2	2.52	0.41
1:A:946:ILE:H	1:A:946:ILE:HG12	1.60	0.41
1:A:624:VAL:HG23	1:A:626:ILE:HG13	2.02	0.40
3:G:45:ILE:HD12	3:G:45:ILE:HA	1.95	0.40
1:A:96:LEU:HD22	1:A:285:ILE:HG23	2.03	0.40
1:A:487:LYS:HD3	1:A:487:LYS:HA	1.96	0.40
1:A:909:PHE:CE2	1:A:972:ARG:HD2	2.57	0.40
2:B:209:LEU:O	2:B:237:GLY:HA3	2.21	0.40
1:A:343:ARG:HA	1:A:346:ARG:HD2	2.03	0.40

Continued on next page...

Continued from previous page...

Atom-1	Atom-2	Interatomic distance (Å)	Clash overlap (Å)
2:B:91:ARG:HG2	2:B:93:ASN:H	1.85	0.40
1:A:564:PHE:HB3	1:A:571:PHE:CZ	2.56	0.40

There are no symmetry-related clashes.

5.3 Torsion angles [i](#)

5.3.1 Protein backbone [i](#)

In the following table, the Percentiles column shows the percent Ramachandran outliers of the chain as a percentile score with respect to all X-ray entries followed by that with respect to entries of similar resolution.

The Analysed column shows the number of residues for which the backbone conformation was analysed, and the total number of residues.

Mol	Chain	Analysed	Favoured	Allowed	Outliers	Percentiles
1	A	993/1016 (98%)	931 (94%)	60 (6%)	2 (0%)	47 79
2	B	289/303 (95%)	257 (89%)	32 (11%)	0	100 100
3	G	30/65 (46%)	28 (93%)	2 (7%)	0	100 100
All	All	1312/1384 (95%)	1216 (93%)	94 (7%)	2 (0%)	47 79

All (2) Ramachandran outliers are listed below:

Mol	Chain	Res	Type
1	A	116	GLU
1	A	489	PRO

5.3.2 Protein sidechains [i](#)

In the following table, the Percentiles column shows the percent sidechain outliers of the chain as a percentile score with respect to all X-ray entries followed by that with respect to entries of similar resolution.

The Analysed column shows the number of residues for which the sidechain conformation was analysed, and the total number of residues.

Mol	Chain	Analysed	Rotameric	Outliers	Percentiles
1	A	846/861 (98%)	804 (95%)	42 (5%)	24 53

Continued on next page...

Continued from previous page...

Mol	Chain	Analysed	Rotameric	Outliers	Percentiles	
2	B	261/269 (97%)	242 (93%)	19 (7%)	14	43
3	G	26/52 (50%)	24 (92%)	2 (8%)	13	42
All	All	1133/1182 (96%)	1070 (94%)	63 (6%)	21	51

All (63) residues with a non-rotameric sidechain are listed below:

Mol	Chain	Res	Type
1	A	35	ASP
1	A	36	ASP
1	A	45	HIS
1	A	56	LEU
1	A	57	THR
1	A	78	THR
1	A	81	GLU
1	A	82	TRP
1	A	89	LEU
1	A	117	GLU
1	A	119	GLN
1	A	124	TYR
1	A	151	MET
1	A	211	LEU
1	A	219	THR
1	A	238	PHE
1	A	291	VAL
1	A	327	GLU
1	A	351	VAL
1	A	360	LEU
1	A	394	ASP
1	A	457	CYS
1	A	467	TYR
1	A	481	TYR
1	A	490	ASN
1	A	523	LEU
1	A	531	PHE
1	A	533	ASN
1	A	537	GLU
1	A	544	ARG
1	A	560	GLU
1	A	563	GLN
1	A	564	PHE
1	A	673	ASP

Continued on next page...

Continued from previous page...

Mol	Chain	Res	Type
1	A	746	ASP
1	A	763	ASP
1	A	776	ASN
1	A	884	ASP
1	A	916	PHE
1	A	946	ILE
1	A	971	LEU
1	A	1003	ARG
2	B	13	LYS
2	B	32	TRP
2	B	61	ILE
2	B	64	PHE
2	B	72	VAL
2	B	80	ILE
2	B	114	ASP
2	B	117	GLN
2	B	125	ASP
2	B	126	CYS
2	B	153	LEU
2	B	163	ASN
2	B	165	GLU
2	B	173	LYS
2	B	177	ILE
2	B	201	VAL
2	B	204	TYR
2	B	232	LEU
2	B	299	ILE
3	G	21	TYR
3	G	46	LEU

Sometimes sidechains can be flipped to improve hydrogen bonding and reduce clashes. All (11) such sidechains are listed below:

Mol	Chain	Res	Type
1	A	119	GLN
1	A	160	GLN
1	A	161	GLN
1	A	399	GLN
1	A	422	ASN
1	A	427	GLN
1	A	521	GLN
1	A	849	GLN
1	A	898	GLN

Continued on next page...

Continued from previous page...

Mol	Chain	Res	Type
2	B	82	GLN
2	B	193	ASN

5.3.3 RNA [i](#)

There are no RNA molecules in this entry.

5.4 Non-standard residues in protein, DNA, RNA chains [i](#)

1 non-standard protein/DNA/RNA residue is modelled in this entry.

In the following table, the Counts columns list the number of bonds (or angles) for which Mogul statistics could be retrieved, the number of bonds (or angles) that are observed in the model and the number of bonds (or angles) that are defined in the Chemical Component Dictionary. The Link column lists molecule types, if any, to which the group is linked. The Z score for a bond length (or angle) is the number of standard deviations the observed value is removed from the expected value. A bond length (or angle) with $|Z| > 2$ is considered an outlier worth inspection. RMSZ is the root-mean-square of all Z scores of the bond lengths (or angles).

Mol	Type	Chain	Res	Link	Bond lengths			Bond angles		
					Counts	RMSZ	# Z > 2	Counts	RMSZ	# Z > 2
1	BFD	A	369	5,1	8,11,12	0.97	0	3,15,17	1.51	0

In the following table, the Chirals column lists the number of chiral outliers, the number of chiral centers analysed, the number of these observed in the model and the number defined in the Chemical Component Dictionary. Similar counts are reported in the Torsion and Rings columns. '-' means no outliers of that kind were identified.

Mol	Type	Chain	Res	Link	Chirals	Torsions	Rings
1	BFD	A	369	5,1	-	0/5/11/13	-

There are no bond length outliers.

There are no bond angle outliers.

There are no chirality outliers.

There are no torsion outliers.

There are no ring outliers.

1 monomer is involved in 1 short contact:

Mol	Chain	Res	Type	Clashes	Symm-Clashes
1	A	369	BFD	1	0

5.5 Carbohydrates i

2 monosaccharides are modelled in this entry.

In the following table, the Counts columns list the number of bonds (or angles) for which Mogul statistics could be retrieved, the number of bonds (or angles) that are observed in the model and the number of bonds (or angles) that are defined in the Chemical Component Dictionary. The Link column lists molecule types, if any, to which the group is linked. The Z score for a bond length (or angle) is the number of standard deviations the observed value is removed from the expected value. A bond length (or angle) with $|Z| > 2$ is considered an outlier worth inspection. RMSZ is the root-mean-square of all Z scores of the bond lengths (or angles).

Mol	Type	Chain	Res	Link	Bond lengths			Bond angles		
					Counts	RMSZ	# Z > 2	Counts	RMSZ	# Z > 2
4	NAG	C	1	2,4	14,14,15	0.55	0	17,19,21	1.40	3 (17%)
4	NAG	C	2	4	14,14,15	0.82	1 (7%)	17,19,21	0.45	0

In the following table, the Chirals column lists the number of chiral outliers, the number of chiral centers analysed, the number of these observed in the model and the number defined in the Chemical Component Dictionary. Similar counts are reported in the Torsion and Rings columns. '-' means no outliers of that kind were identified.

Mol	Type	Chain	Res	Link	Chirals	Torsions	Rings
4	NAG	C	1	2,4	-	3/6/23/26	0/1/1/1
4	NAG	C	2	4	-	0/6/23/26	0/1/1/1

All (1) bond length outliers are listed below:

Mol	Chain	Res	Type	Atoms	Z	Observed(Å)	Ideal(Å)
4	C	2	NAG	C1-C2	2.29	1.55	1.52

All (3) bond angle outliers are listed below:

Mol	Chain	Res	Type	Atoms	Z	Observed(°)	Ideal(°)
4	C	1	NAG	C1-O5-C5	3.17	116.49	112.19
4	C	1	NAG	O3-C3-C4	2.21	115.45	110.35
4	C	1	NAG	O4-C4-C3	2.07	115.13	110.35

There are no chirality outliers.

All (3) torsion outliers are listed below:

Mol	Chain	Res	Type	Atoms
4	C	1	NAG	C4-C5-C6-O6

Continued on next page...

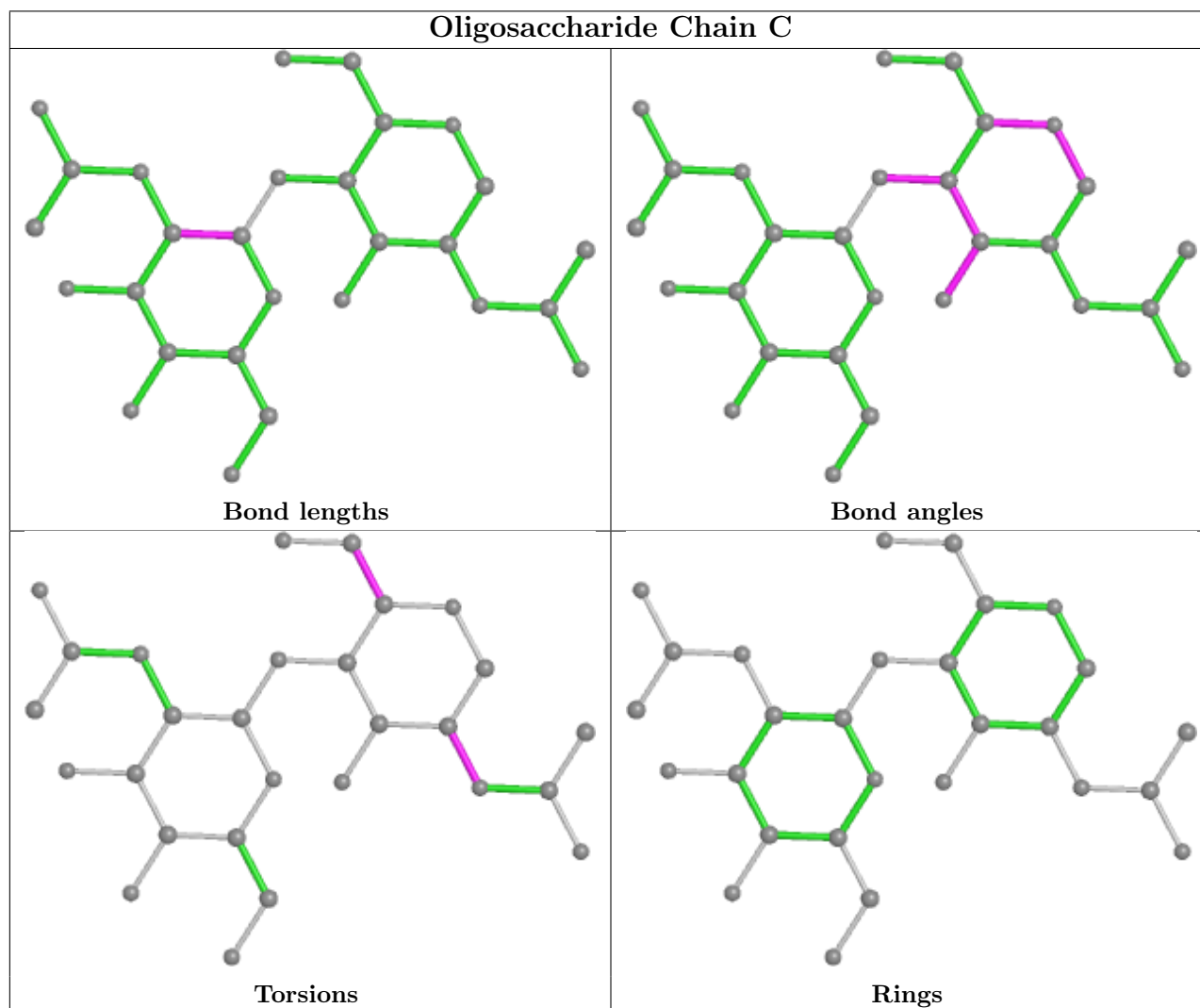
Continued from previous page...

Mol	Chain	Res	Type	Atoms
4	C	1	NAG	O5-C5-C6-O6
4	C	1	NAG	C3-C2-N2-C7

There are no ring outliers.

No monomer is involved in short contacts.

The following is a two-dimensional graphical depiction of Mogul quality analysis of bond lengths, bond angles, torsion angles, and ring geometry for oligosaccharide.



5.6 Ligand geometry [i](#)

Of 16 ligands modelled in this entry, 3 are monoatomic - leaving 13 for Mogul analysis.

In the following table, the Counts columns list the number of bonds (or angles) for which Mogul statistics could be retrieved, the number of bonds (or angles) that are observed in the model and the number of bonds (or angles) that are defined in the Chemical Component Dictionary. The

Link column lists molecule types, if any, to which the group is linked. The Z score for a bond length (or angle) is the number of standard deviations the observed value is removed from the expected value. A bond length (or angle) with $|Z| > 2$ is considered an outlier worth inspection. RMSZ is the root-mean-square of all Z scores of the bond lengths (or angles).

Mol	Type	Chain	Res	Link	Bond lengths			Bond angles		
					Counts	RMSZ	# Z > 2	Counts	RMSZ	# Z > 2
7	PCW	A	1106	-	21,21,53	0.84	0	27,29,61	1.16	3 (11%)
7	PCW	A	1111	-	21,21,53	0.85	0	27,29,61	0.90	1 (3%)
8	H0C	A	1121	-	63,65,65	1.13	4 (6%)	93,104,104	1.25	6 (6%)
9	NAG	B	421	2	14,14,15	0.44	0	17,19,21	0.54	0
6	CLR	A	1104	-	31,31,31	1.48	9 (29%)	48,48,48	1.44	12 (25%)
7	PCW	A	1105	-	21,21,53	0.84	0	27,29,61	0.90	1 (3%)
7	PCW	A	1108	-	21,21,53	0.84	0	27,29,61	1.11	3 (11%)
7	PCW	A	1110	-	21,21,53	0.84	0	27,29,61	1.13	3 (11%)
6	CLR	G	101	-	31,31,31	1.44	4 (12%)	48,48,48	1.37	6 (12%)
7	PCW	A	1107	-	21,21,53	0.85	0	27,29,61	1.25	3 (11%)
7	PCW	A	1112	-	21,21,53	0.85	0	27,29,61	0.88	1 (3%)
6	CLR	B	501	-	31,31,31	1.54	7 (22%)	48,48,48	1.44	8 (16%)
7	PCW	A	1109	-	21,21,53	0.86	0	27,29,61	1.25	3 (11%)

In the following table, the Chirals column lists the number of chiral outliers, the number of chiral centers analysed, the number of these observed in the model and the number defined in the Chemical Component Dictionary. Similar counts are reported in the Torsion and Rings columns. '2' means no outliers of that kind were identified.

Mol	Type	Chain	Res	Link	Chirals	Torsions	Rings
7	PCW	A	1106	-	-	13/23/23/57	-
7	PCW	A	1111	-	-	5/23/23/57	-
8	H0C	A	1121	-	-	5/19/124/124	0/9/9/9
9	NAG	B	421	2	-	1/6/23/26	0/1/1/1
6	CLR	A	1104	-	-	5/10/68/68	0/4/4/4
7	PCW	A	1105	-	-	8/23/23/57	-
7	PCW	A	1108	-	-	7/23/23/57	-
7	PCW	A	1110	-	-	11/23/23/57	-
6	CLR	G	101	-	-	4/10/68/68	0/4/4/4
7	PCW	A	1107	-	-	10/23/23/57	-
7	PCW	A	1112	-	-	7/23/23/57	-
6	CLR	B	501	-	-	4/10/68/68	0/4/4/4

Continued on next page...

Continued from previous page...

Mol	Type	Chain	Res	Link	Chirals	Torsions	Rings
7	PCW	A	1109	-	-	10/23/23/57	-

All (24) bond length outliers are listed below:

Mol	Chain	Res	Type	Atoms	Z	Observed(Å)	Ideal(Å)
6	B	501	CLR	C10-C5	3.68	1.60	1.52
6	G	101	CLR	C10-C5	3.54	1.59	1.52
6	A	1104	CLR	C10-C5	2.89	1.58	1.52
6	B	501	CLR	C10-C9	2.85	1.60	1.56
8	A	1121	H0C	C26-C27	2.84	1.58	1.54
8	A	1121	H0C	C26-C12	2.82	1.58	1.53
6	B	501	CLR	C16-C17	2.76	1.60	1.54
8	A	1121	H0C	C31-C30	2.74	1.56	1.53
6	G	101	CLR	C16-C17	2.73	1.60	1.54
6	A	1104	CLR	C16-C17	2.69	1.60	1.54
6	B	501	CLR	C12-C11	2.42	1.58	1.53
6	A	1104	CLR	C4-C3	2.37	1.56	1.52
6	B	501	CLR	C13-C17	2.35	1.59	1.55
6	B	501	CLR	C12-C13	2.34	1.58	1.54
6	A	1104	CLR	C10-C9	2.16	1.59	1.56
6	G	101	CLR	C13-C17	2.12	1.59	1.55
6	G	101	CLR	C16-C15	2.09	1.59	1.54
6	A	1104	CLR	C12-C11	2.08	1.57	1.53
6	B	501	CLR	C11-C9	2.07	1.57	1.53
6	A	1104	CLR	C11-C9	2.06	1.57	1.53
6	A	1104	CLR	C16-C15	2.06	1.59	1.54
6	A	1104	CLR	C13-C17	2.05	1.58	1.55
8	A	1121	H0C	C11-C1	2.01	1.59	1.54
6	A	1104	CLR	C12-C13	2.00	1.57	1.54

All (50) bond angle outliers are listed below:

Mol	Chain	Res	Type	Atoms	Z	Observed(°)	Ideal(°)
8	A	1121	H0C	O8-C16-C17	5.62	116.01	108.67
7	A	1109	PCW	C2-O2-C31	-4.36	109.78	117.90
8	A	1121	H0C	O9-C16-C17	-4.24	122.22	130.81
7	A	1106	PCW	C2-O2-C31	-3.83	110.76	117.90
7	A	1107	PCW	C3-O3-C11	-3.38	108.60	117.10
7	A	1109	PCW	C3-O3-C11	-3.30	108.81	117.10
7	A	1107	PCW	C2-O2-C31	-3.23	111.88	117.90
8	A	1121	H0C	C19-C17-C16	-3.18	102.25	108.84
7	A	1108	PCW	C2-O2-C31	-3.17	111.99	117.90

Continued on next page...

Continued from previous page...

Mol	Chain	Res	Type	Atoms	Z	Observed(°)	Ideal(°)
7	A	1110	PCW	O2-C31-C32	3.13	116.85	111.09
7	A	1110	PCW	C3-O3-C11	-2.90	109.81	117.10
7	A	1108	PCW	C3-O3-C11	-2.88	109.87	117.10
6	A	1104	CLR	C1-C2-C3	2.79	114.04	110.47
7	A	1106	PCW	C3-O3-C11	-2.73	110.24	117.10
6	G	101	CLR	C13-C17-C20	-2.73	115.21	119.49
7	A	1107	PCW	O2-C31-C32	2.73	116.10	111.09
7	A	1111	PCW	C3-O3-C11	-2.66	110.41	117.10
8	A	1121	H0C	C18-O8-C16	-2.59	105.71	108.85
7	A	1105	PCW	C3-O3-C11	-2.56	110.66	117.10
6	A	1104	CLR	C8-C7-C6	-2.52	109.11	112.73
7	A	1112	PCW	C3-O3-C11	-2.50	110.82	117.10
6	B	501	CLR	C22-C20-C17	-2.47	105.19	110.28
6	B	501	CLR	C15-C14-C13	2.46	106.81	103.84
6	A	1104	CLR	C18-C13-C12	2.45	114.46	110.59
6	B	501	CLR	C1-C2-C3	2.44	113.60	110.47
7	A	1110	PCW	O2-C2-C3	2.42	117.16	108.40
6	A	1104	CLR	C13-C17-C20	-2.40	115.73	119.49
6	G	101	CLR	C1-C2-C3	2.39	113.54	110.47
7	A	1106	PCW	O2-C31-C32	2.39	115.48	111.09
6	B	501	CLR	C18-C13-C12	2.38	114.34	110.59
6	B	501	CLR	C8-C7-C6	-2.38	109.32	112.73
6	G	101	CLR	C7-C8-C14	-2.37	107.47	110.91
6	G	101	CLR	C18-C13-C12	2.35	114.29	110.59
8	A	1121	H0C	O2-C3-C31	2.31	114.66	107.83
6	A	1104	CLR	C22-C20-C17	-2.31	105.52	110.28
7	A	1109	PCW	O2-C31-C32	2.30	115.32	111.09
6	A	1104	CLR	C15-C14-C13	2.28	106.59	103.84
6	A	1104	CLR	C13-C14-C8	-2.27	111.02	114.38
6	B	501	CLR	C13-C17-C20	-2.25	115.96	119.49
6	A	1104	CLR	C4-C5-C10	-2.15	113.56	116.42
7	A	1108	PCW	O2-C31-C32	2.10	114.96	111.09
6	G	101	CLR	C8-C7-C6	-2.09	109.72	112.73
6	B	501	CLR	C16-C17-C20	-2.09	108.92	112.15
6	A	1104	CLR	C19-C10-C9	-2.08	109.20	111.68
6	A	1104	CLR	C7-C6-C5	-2.06	121.26	125.06
6	A	1104	CLR	C12-C13-C14	-2.04	104.11	107.27
8	A	1121	H0C	C23-C24-C25	-2.04	101.73	105.19
6	A	1104	CLR	C21-C20-C17	2.03	116.02	112.92
6	G	101	CLR	C21-C20-C17	2.03	116.02	112.92
6	B	501	CLR	C12-C13-C14	-2.02	104.14	107.27

There are no chirality outliers.

All (90) torsion outliers are listed below:

Mol	Chain	Res	Type	Atoms
7	A	1105	PCW	C1-O3P-P-O1P
7	A	1105	PCW	C1-O3P-P-O2P
7	A	1105	PCW	C4-O4P-P-O1P
7	A	1106	PCW	C32-C31-O2-C2
7	A	1106	PCW	O31-C31-O2-C2
7	A	1106	PCW	C1-O3P-P-O2P
7	A	1106	PCW	C4-O4P-P-O1P
7	A	1106	PCW	C4-O4P-P-O2P
7	A	1107	PCW	C1-O3P-P-O1P
7	A	1107	PCW	C1-O3P-P-O4P
7	A	1107	PCW	C4-O4P-P-O3P
7	A	1108	PCW	C1-O3P-P-O1P
7	A	1108	PCW	C1-O3P-P-O2P
7	A	1108	PCW	C4-O4P-P-O2P
7	A	1109	PCW	C32-C31-O2-C2
7	A	1109	PCW	O31-C31-O2-C2
7	A	1109	PCW	C1-O3P-P-O1P
7	A	1109	PCW	C1-O3P-P-O2P
7	A	1109	PCW	C4-O4P-P-O1P
7	A	1109	PCW	C4-O4P-P-O2P
7	A	1110	PCW	C32-C31-O2-C2
7	A	1110	PCW	C1-O3P-P-O2P
7	A	1110	PCW	C1-O3P-P-O4P
7	A	1110	PCW	C4-O4P-P-O1P
7	A	1111	PCW	C4-O4P-P-O1P
7	A	1112	PCW	C1-O3P-P-O1P
8	A	1121	H0C	C26-C11-C14-O6
8	A	1121	H0C	C30-C11-C14-O6
7	A	1107	PCW	C32-C31-O2-C2
7	A	1107	PCW	O31-C31-O2-C2
7	A	1110	PCW	O31-C31-O2-C2
7	A	1106	PCW	O11-C11-O3-C3
7	A	1106	PCW	C12-C11-O3-C3
7	A	1107	PCW	O11-C11-O3-C3
7	A	1110	PCW	O11-C11-O3-C3
7	A	1107	PCW	C12-C11-O3-C3
7	A	1110	PCW	C12-C11-O3-C3
6	B	501	CLR	C20-C22-C23-C24
6	A	1104	CLR	C20-C22-C23-C24
7	A	1105	PCW	C1-O3P-P-O4P
7	A	1106	PCW	C4-O4P-P-O3P
7	A	1109	PCW	C1-O3P-P-O4P

Continued on next page...

Continued from previous page...

Mol	Chain	Res	Type	Atoms
7	A	1109	PCW	C4-O4P-P-O3P
7	A	1110	PCW	C4-O4P-P-O3P
8	A	1121	H0C	C1-C11-C14-O6
6	B	501	CLR	C23-C24-C25-C26
6	B	501	CLR	C23-C24-C25-C27
6	A	1104	CLR	C23-C24-C25-C26
7	A	1108	PCW	C1-O3P-P-O4P
7	A	1108	PCW	C4-O4P-P-O3P
7	A	1111	PCW	C4-O4P-P-O3P
7	A	1112	PCW	C1-O3P-P-O4P
9	B	421	NAG	O5-C5-C6-O6
6	G	101	CLR	C13-C17-C20-C21
7	A	1105	PCW	C4-O4P-P-O3P
8	A	1121	H0C	O13-C32-O2-C3
6	G	101	CLR	C13-C17-C20-C22
6	A	1104	CLR	C23-C24-C25-C27
6	A	1104	CLR	C13-C17-C20-C21
7	A	1106	PCW	C1-O3P-P-O4P
7	A	1112	PCW	C4-O4P-P-O3P
7	A	1105	PCW	C4-O4P-P-O2P
7	A	1106	PCW	C1-O3P-P-O1P
7	A	1107	PCW	C1-O3P-P-O2P
7	A	1108	PCW	C4-O4P-P-O1P
7	A	1110	PCW	C4-O4P-P-O2P
7	A	1111	PCW	C4-O4P-P-O2P
7	A	1112	PCW	C1-O3P-P-O2P
7	A	1112	PCW	C4-O4P-P-O2P
8	A	1121	H0C	C33-C32-O2-C3
7	A	1105	PCW	O4P-C4-C5-N
7	A	1106	PCW	O4P-C4-C5-N
7	A	1107	PCW	O4P-C4-C5-N
7	A	1108	PCW	O4P-C4-C5-N
7	A	1109	PCW	O4P-C4-C5-N
7	A	1110	PCW	O4P-C4-C5-N
7	A	1111	PCW	O4P-C4-C5-N
7	A	1112	PCW	O4P-C4-C5-N
6	G	101	CLR	C16-C17-C20-C21
7	A	1106	PCW	C3-C2-O2-C31
7	A	1107	PCW	C3-C2-O2-C31
7	A	1110	PCW	C3-C2-O2-C31
6	G	101	CLR	C16-C17-C20-C22
6	B	501	CLR	C13-C17-C20-C21

Continued on next page...

Continued from previous page...

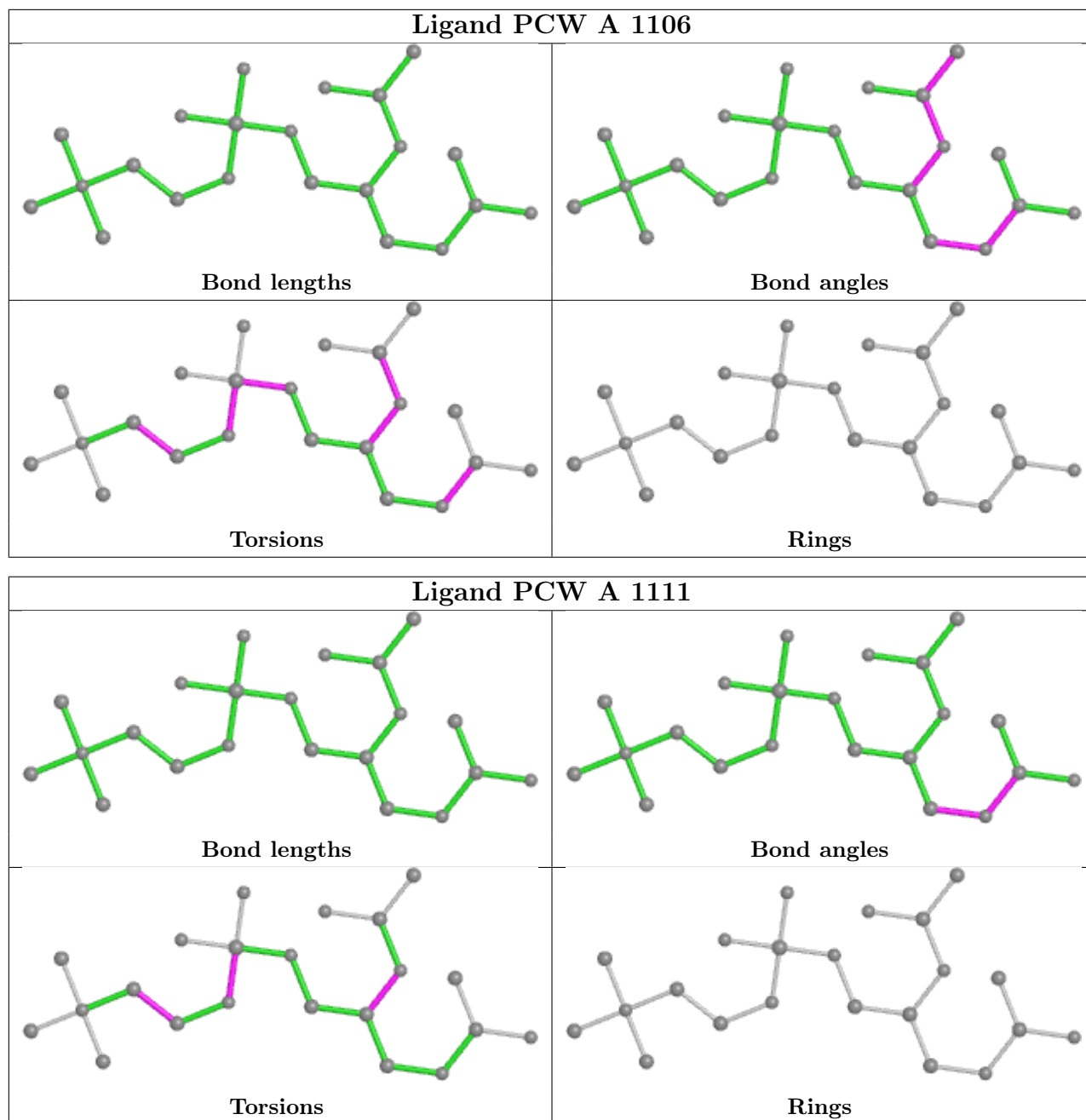
Mol	Chain	Res	Type	Atoms
7	A	1105	PCW	C3-C2-O2-C31
7	A	1106	PCW	C1-C2-O2-C31
7	A	1109	PCW	C3-C2-O2-C31
7	A	1111	PCW	C3-C2-O2-C31
7	A	1112	PCW	C3-C2-O2-C31
6	A	1104	CLR	C13-C17-C20-C22

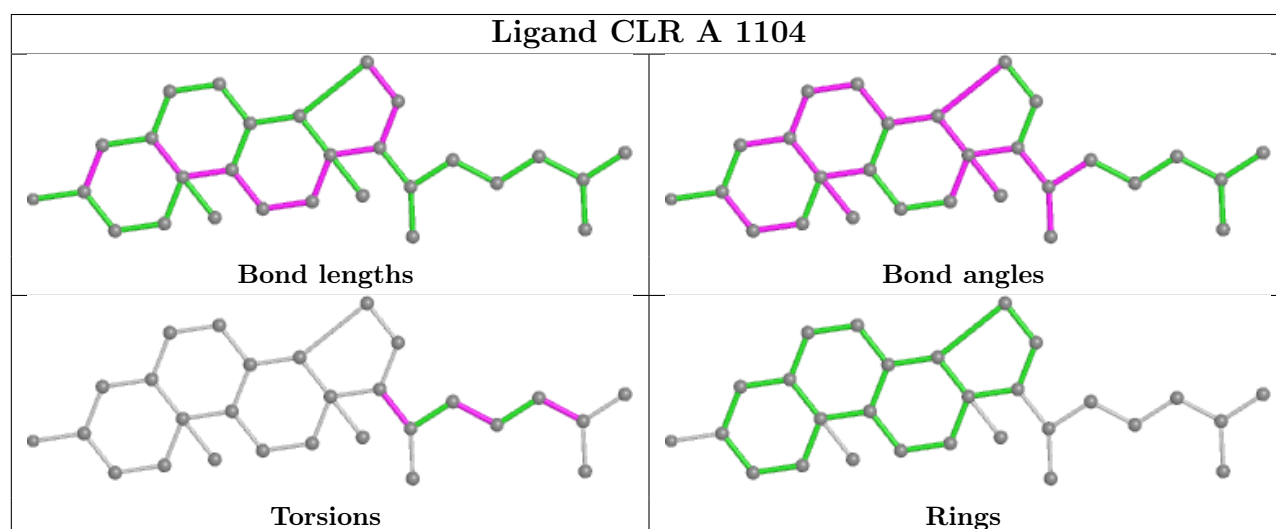
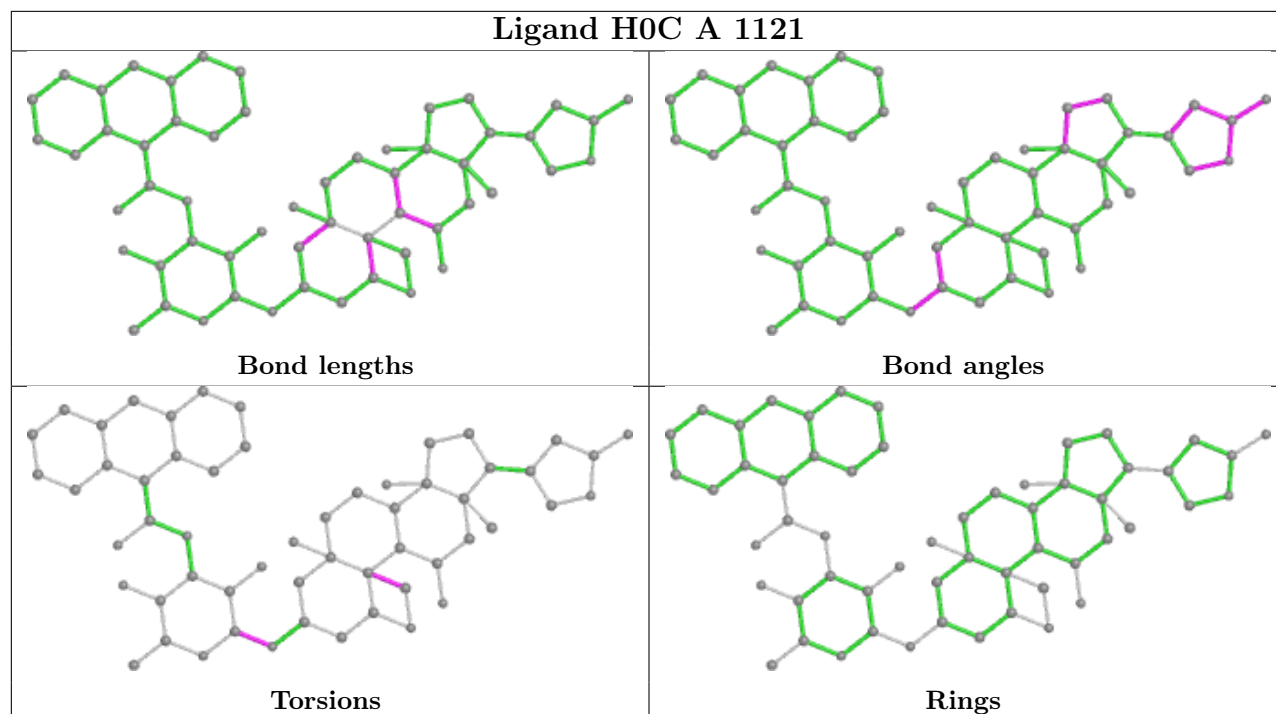
There are no ring outliers.

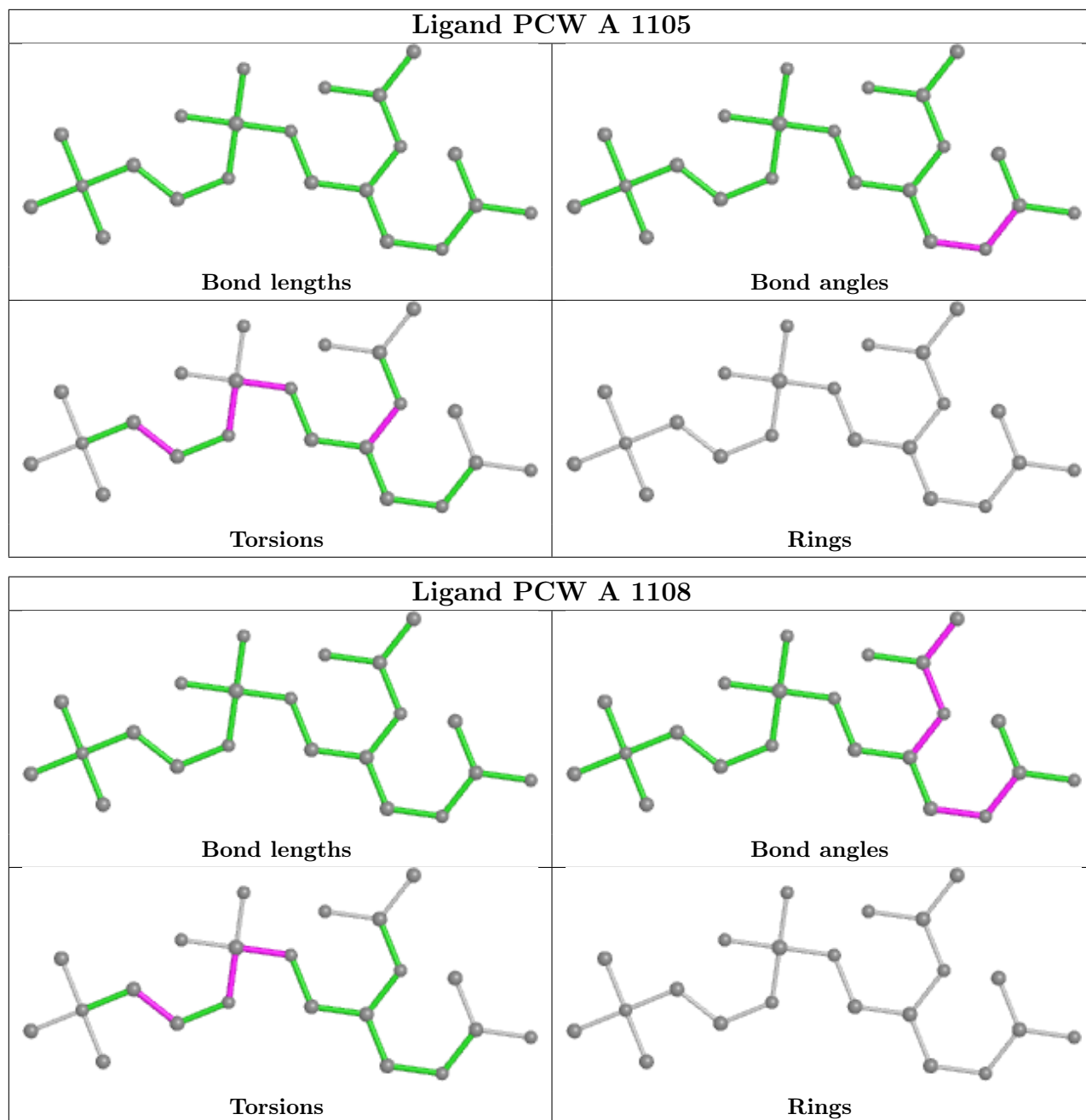
4 monomers are involved in 10 short contacts:

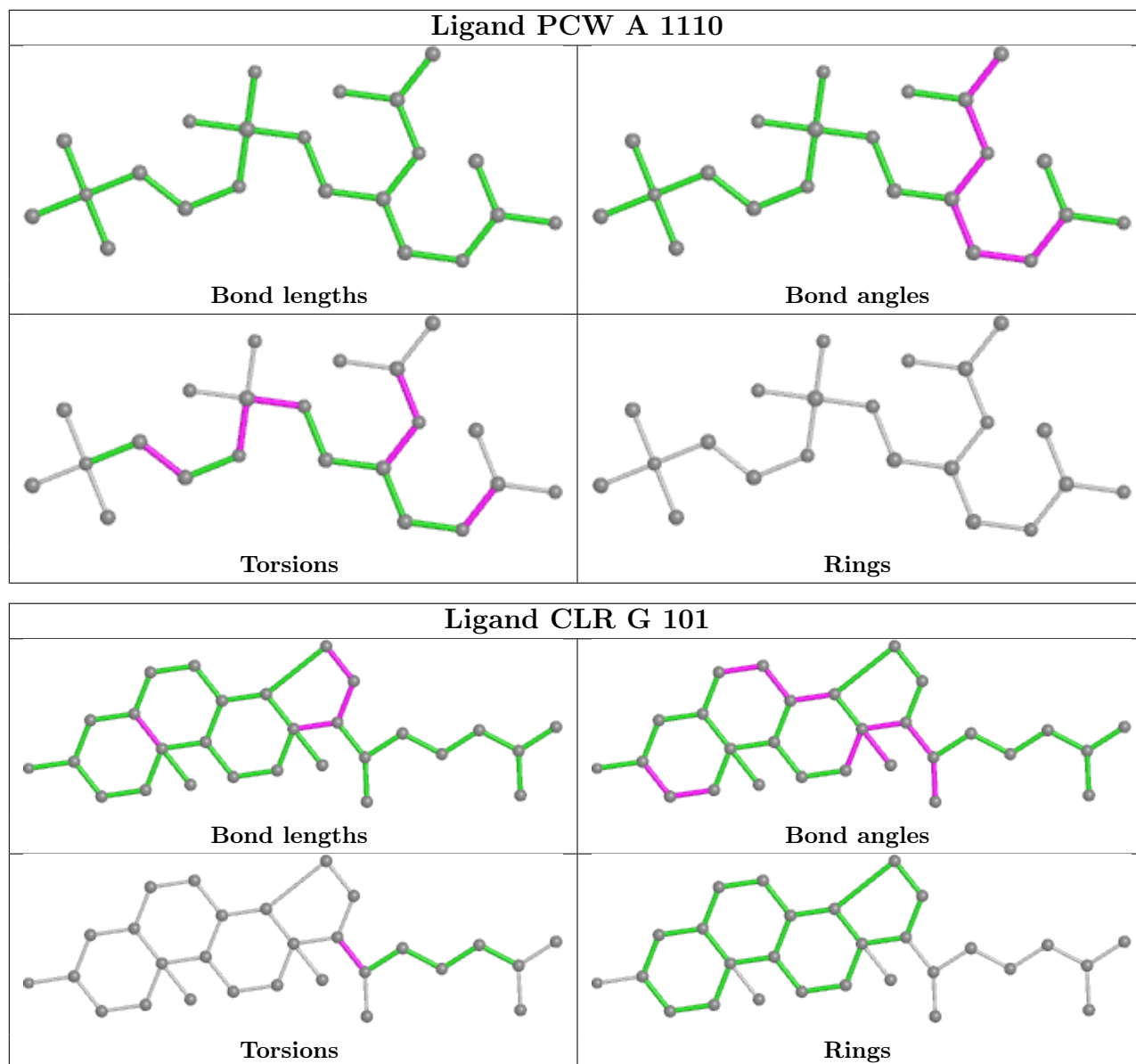
Mol	Chain	Res	Type	Clashes	Symm-Clashes
6	A	1104	CLR	2	0
6	G	101	CLR	6	0
7	A	1107	PCW	1	0
6	B	501	CLR	2	0

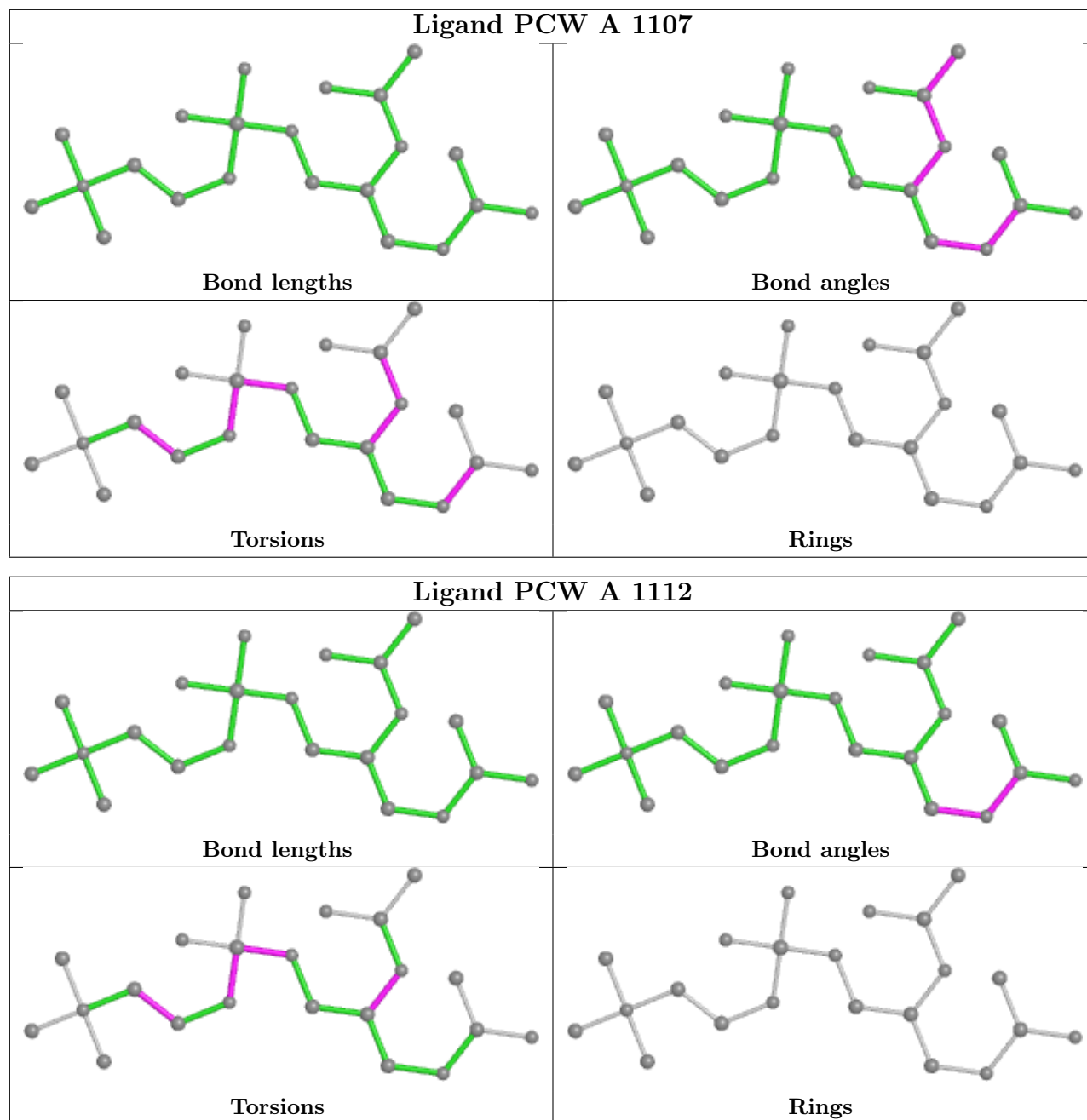
The following is a two-dimensional graphical depiction of Mogul quality analysis of bond lengths, bond angles, torsion angles, and ring geometry for all instances of the Ligand of Interest. In addition, ligands with molecular weight > 250 and outliers as shown on the validation Tables will also be included. For torsion angles, if less than 5% of the Mogul distribution of torsion angles is within 10 degrees of the torsion angle in question, then that torsion angle is considered an outlier. Any bond that is central to one or more torsion angles identified as an outlier by Mogul will be highlighted in the graph. For rings, the root-mean-square deviation (RMSD) between the ring in question and similar rings identified by Mogul is calculated over all ring torsion angles. If the average RMSD is greater than 60 degrees and the minimal RMSD between the ring in question and any Mogul-identified rings is also greater than 60 degrees, then that ring is considered an outlier. The outliers are highlighted in purple. The color gray indicates Mogul did not find sufficient equivalents in the CSD to analyse the geometry.

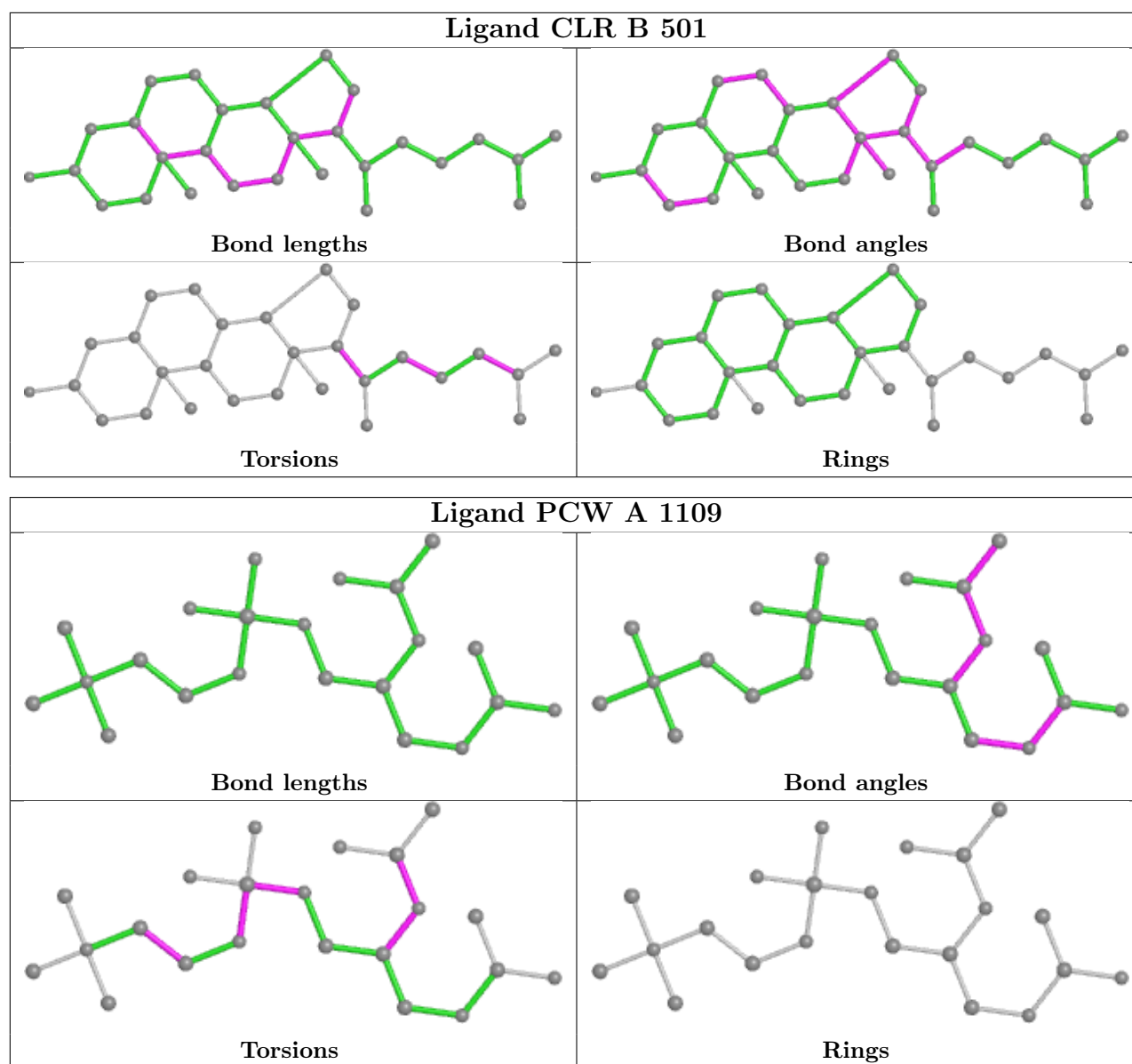












5.7 Other polymers [i](#)

There are no such residues in this entry.

5.8 Polymer linkage issues [i](#)

There are no chain breaks in this entry.

6 Fit of model and data [i](#)

6.1 Protein, DNA and RNA chains [i](#)

Unable to reproduce the depositors R factor - this section is therefore empty.

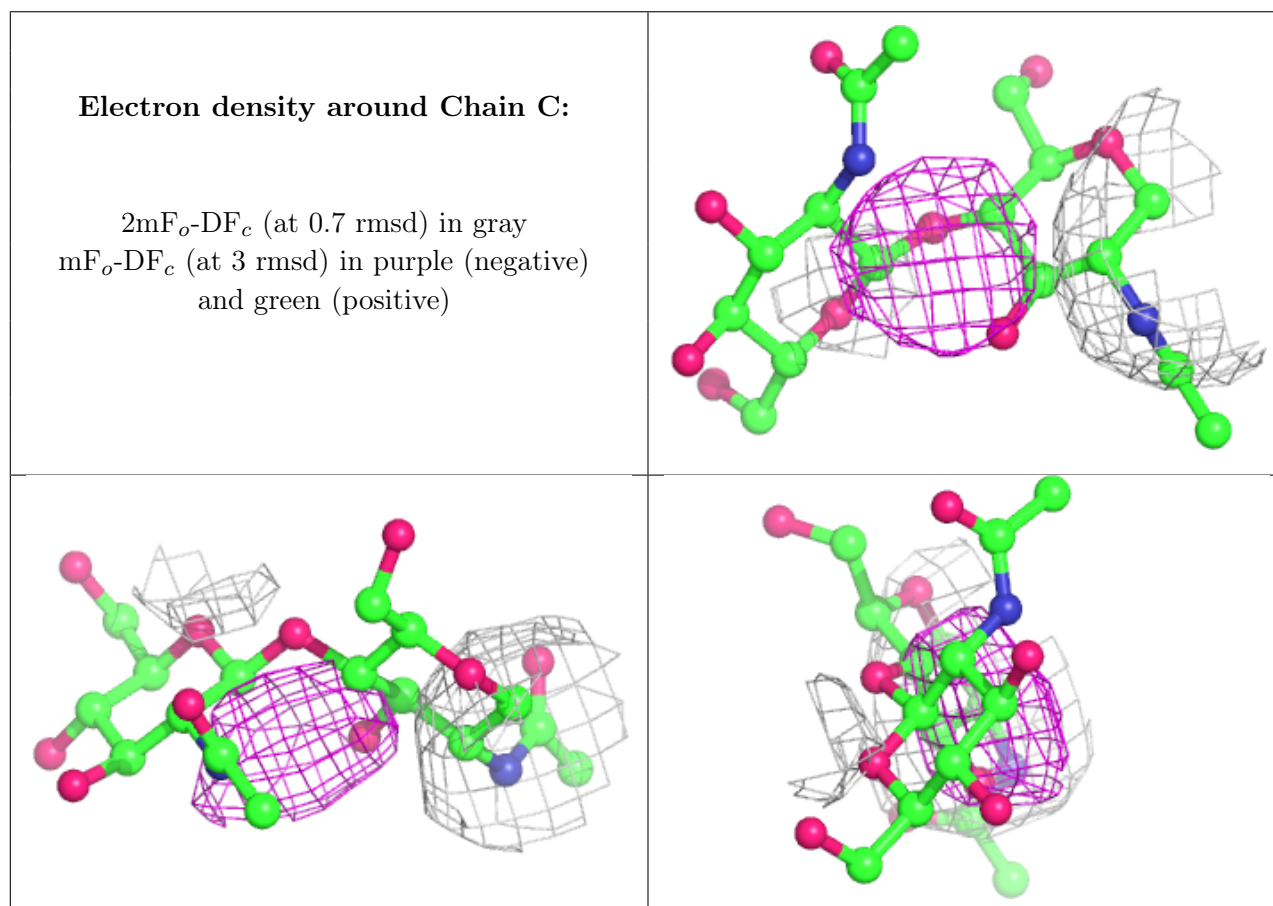
6.2 Non-standard residues in protein, DNA, RNA chains [i](#)

Unable to reproduce the depositors R factor - this section is therefore empty.

6.3 Carbohydrates [i](#)

Unable to reproduce the depositors R factor - this section is therefore empty.

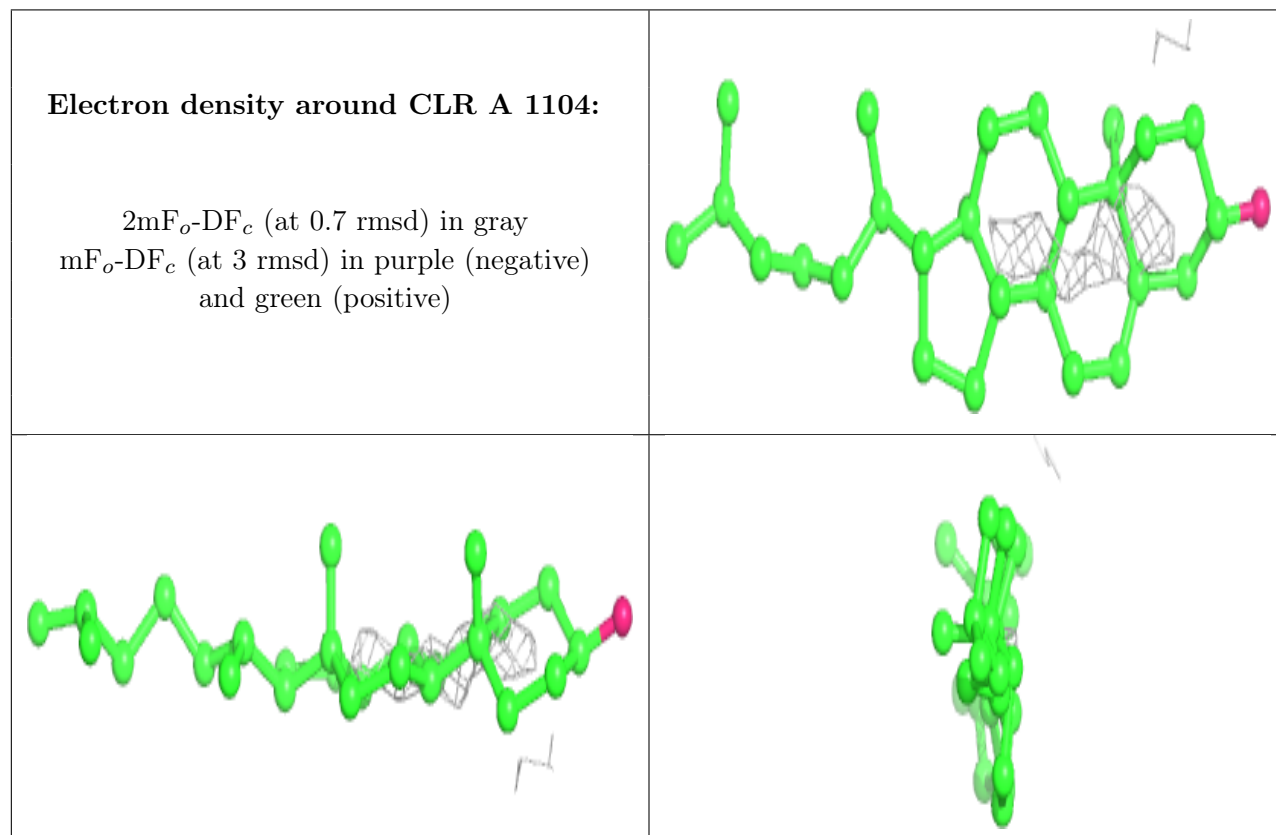
The following is a graphical depiction of the model fit to experimental electron density for oligosaccharide. Each fit is shown from different orientation to approximate a three-dimensional view.



6.4 Ligands [i](#)

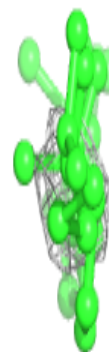
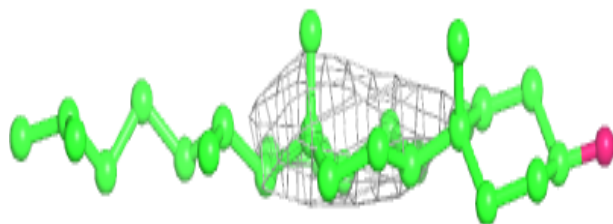
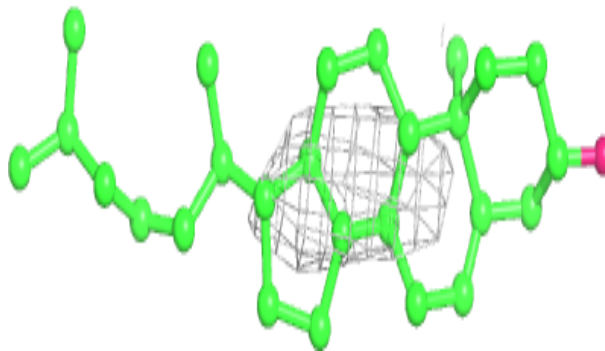
Unable to reproduce the depositors R factor - this section is therefore empty.

The following is a graphical depiction of the model fit to experimental electron density of all instances of the Ligand of Interest. In addition, ligands with molecular weight > 250 and outliers as shown on the geometry validation Tables will also be included. Each fit is shown from different orientation to approximate a three-dimensional view.

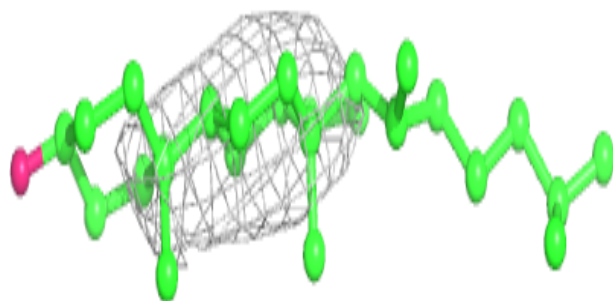
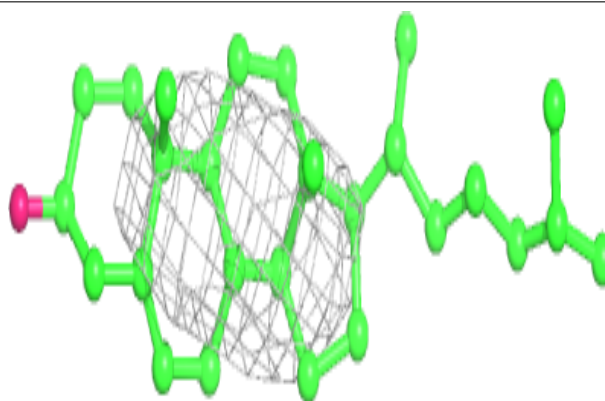


Electron density around CLR B 501:

$2mF_o-DF_c$ (at 0.7 rmsd) in gray
 mF_o-DF_c (at 3 rmsd) in purple (negative)
and green (positive)

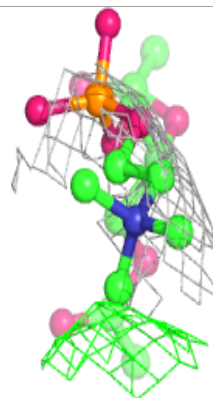
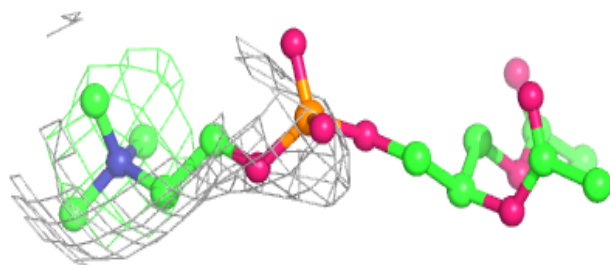
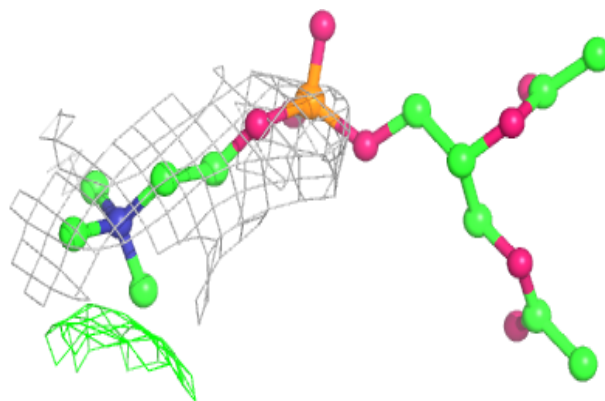
**Electron density around CLR G 101:**

$2mF_o-DF_c$ (at 0.7 rmsd) in gray
 mF_o-DF_c (at 3 rmsd) in purple (negative)
and green (positive)

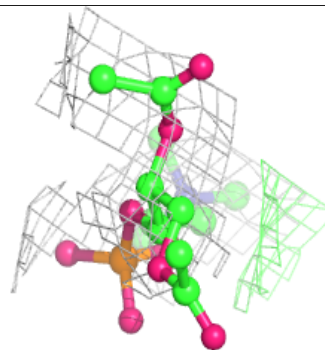
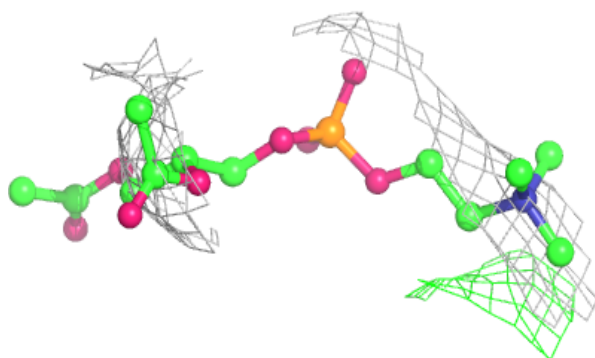
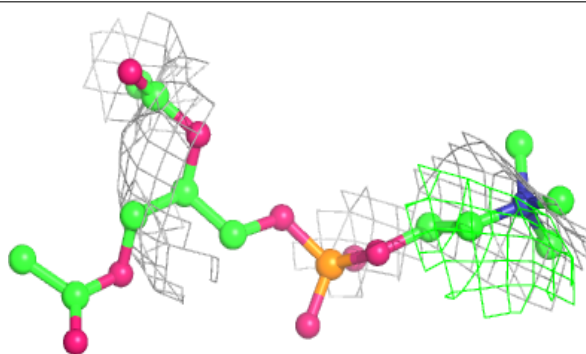


Electron density around PCW A 1105:

$2mF_o-DF_c$ (at 0.7 rmsd) in gray
 mF_o-DF_c (at 3 rmsd) in purple (negative)
and green (positive)

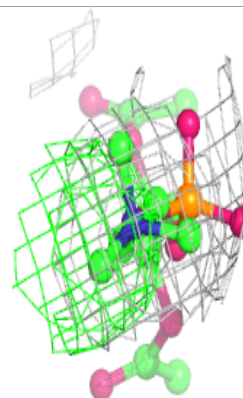
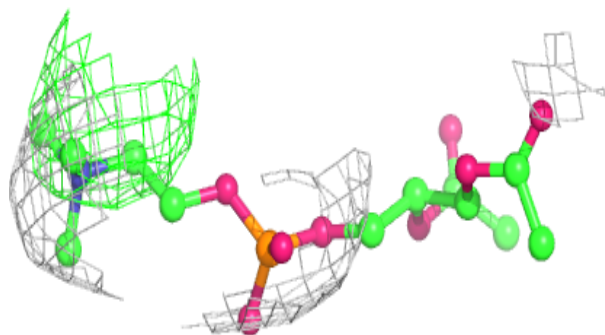
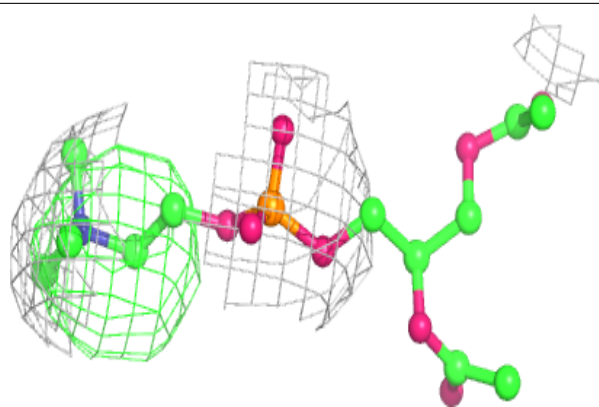
**Electron density around PCW A 1106:**

$2mF_o-DF_c$ (at 0.7 rmsd) in gray
 mF_o-DF_c (at 3 rmsd) in purple (negative)
and green (positive)

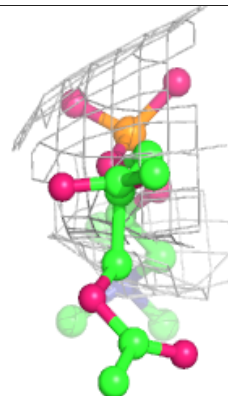
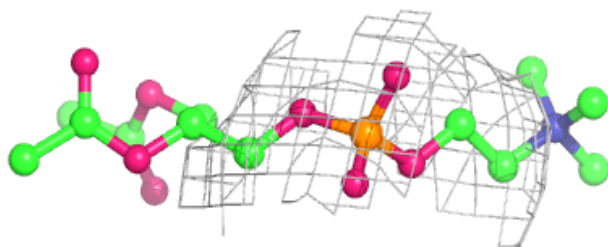
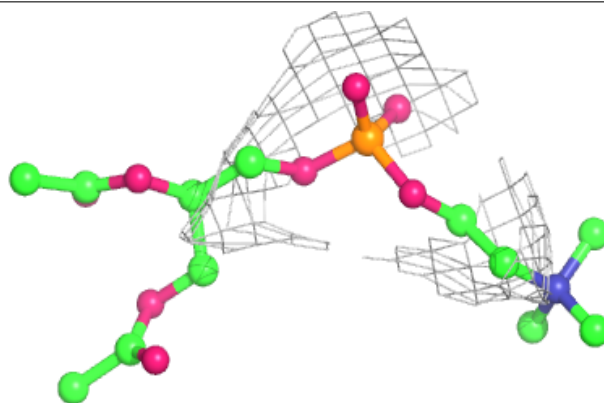


Electron density around PCW A 1107:

$2mF_o-DF_c$ (at 0.7 rmsd) in gray
 mF_o-DF_c (at 3 rmsd) in purple (negative)
and green (positive)

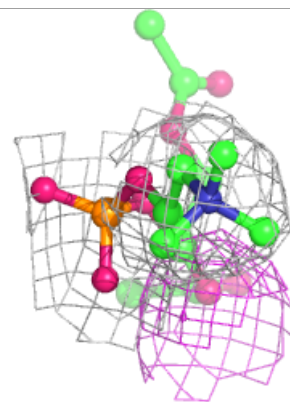
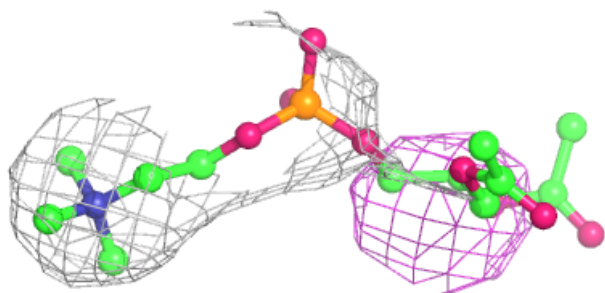
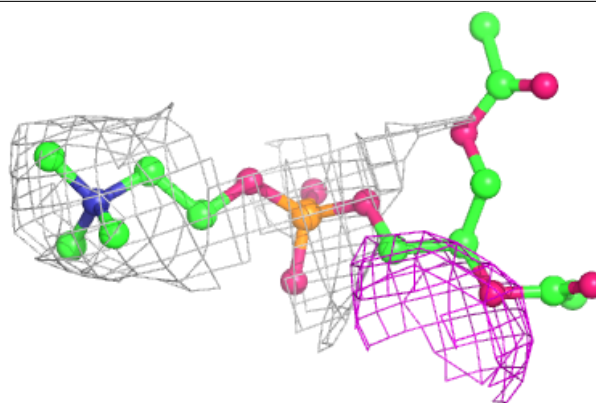
**Electron density around PCW A 1108:**

$2mF_o-DF_c$ (at 0.7 rmsd) in gray
 mF_o-DF_c (at 3 rmsd) in purple (negative)
and green (positive)

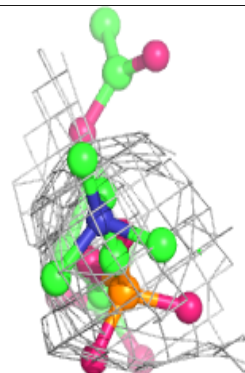
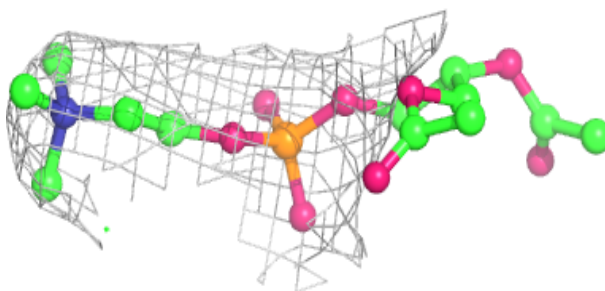
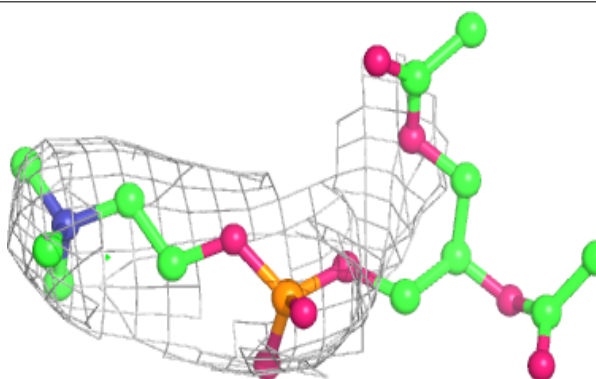


Electron density around PCW A 1109:

$2mF_o-DF_c$ (at 0.7 rmsd) in gray
 mF_o-DF_c (at 3 rmsd) in purple (negative)
and green (positive)

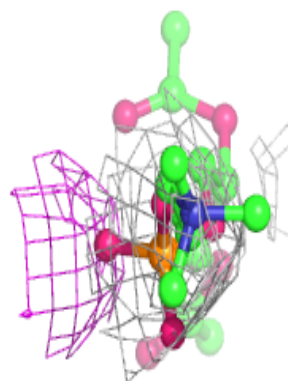
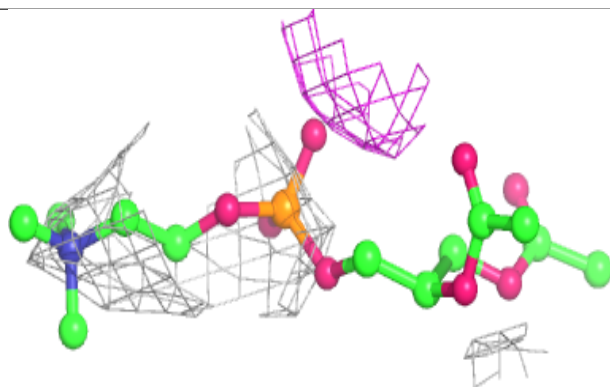
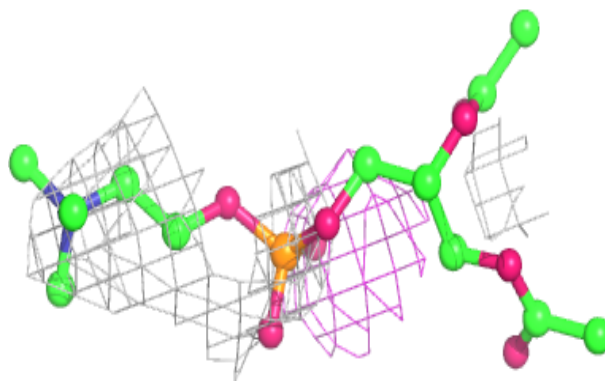
**Electron density around PCW A 1110:**

$2mF_o-DF_c$ (at 0.7 rmsd) in gray
 mF_o-DF_c (at 3 rmsd) in purple (negative)
and green (positive)

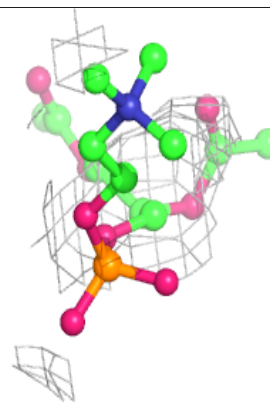
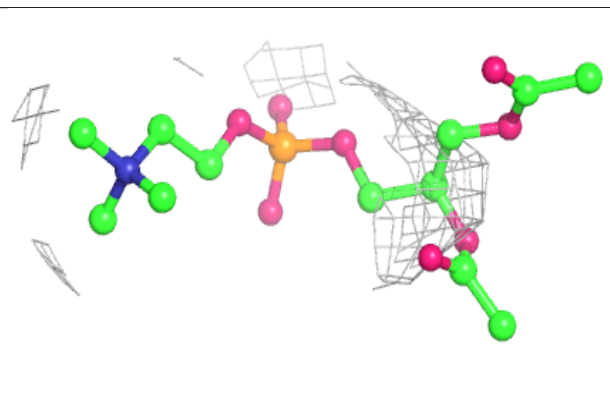
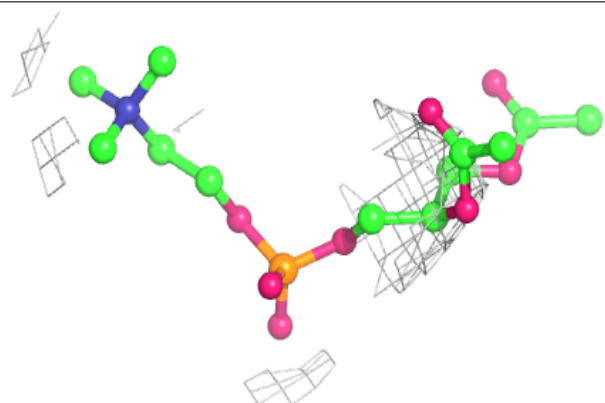


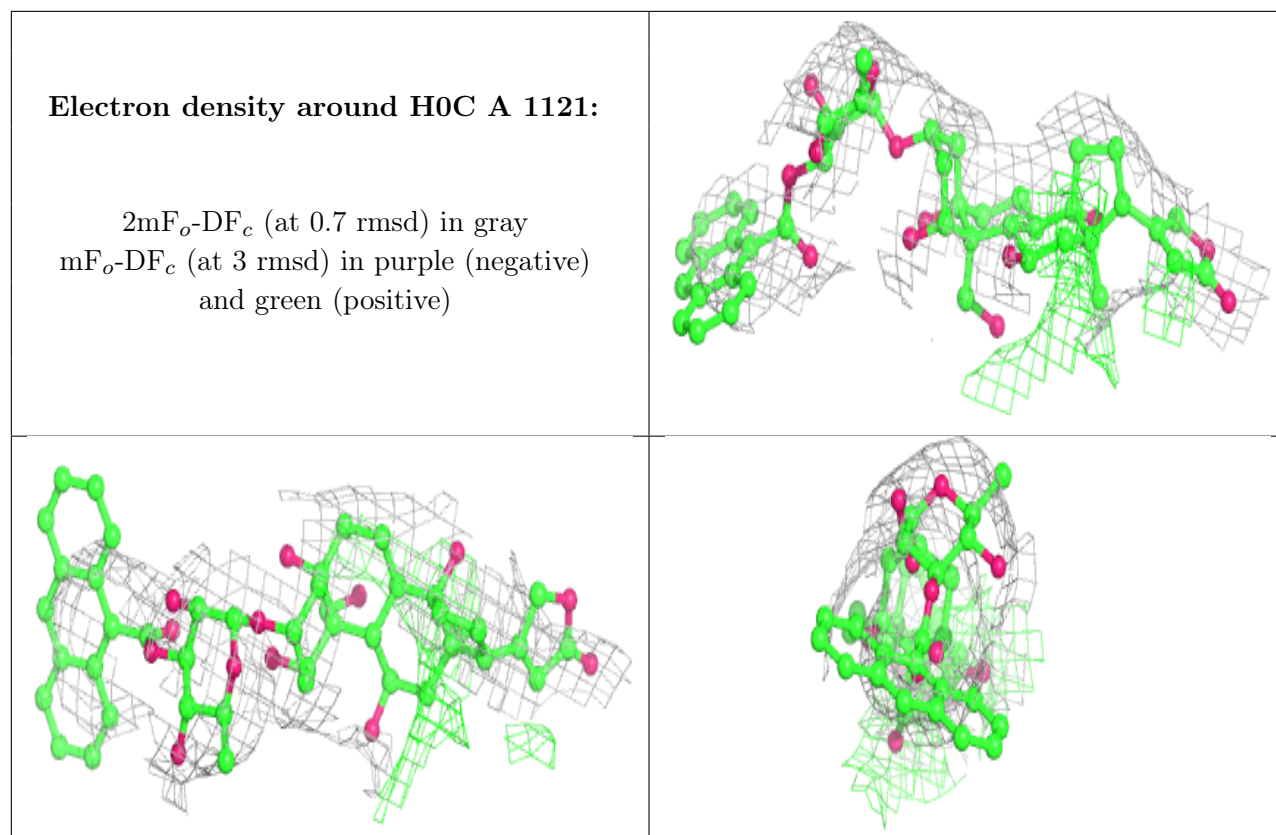
Electron density around PCW A 1111:

$2mF_o-DF_c$ (at 0.7 rmsd) in gray
 mF_o-DF_c (at 3 rmsd) in purple (negative)
and green (positive)

**Electron density around PCW A 1112:**

$2mF_o-DF_c$ (at 0.7 rmsd) in gray
 mF_o-DF_c (at 3 rmsd) in purple (negative)
and green (positive)





6.5 Other polymers [i](#)

Unable to reproduce the depositors R factor - this section is therefore empty.