



Full wwPDB X-ray Structure Validation Report ⓘ

Mar 10, 2018 – 03:31 am GMT

PDB ID : 4DAJ
Title : Structure of the M3 Muscarinic Acetylcholine Receptor
Authors : Kruse, A.C.; Hu, J.; Pan, A.C.; Arlow, D.H.; Rosenbaum, D.M.; Rosemond, E.; Green, H.F.; Liu, T.; Chae, P.S.; Dror, R.O.; Shaw, D.E.; Weis, W.I.; Wess, J.; Kobilka, B.
Deposited on : 2012-01-12
Resolution : 3.40 Å(reported)

This is a Full wwPDB X-ray Structure Validation Report for a publicly released PDB entry.

We welcome your comments at validation@mail.wwpdb.org

A user guide is available at

<https://www.wwpdb.org/validation/2017/XrayValidationReportHelp>

with specific help available everywhere you see the ⓘ symbol.

The following versions of software and data (see [references ⓘ](#)) were used in the production of this report:

MolProbity : 4.02b-467
Mogul : 1.7.3 (157068), CSD as539be (2018)
Xtrriage (Phenix) : 1.13
EDS : trunk30967
Percentile statistics : 20171227.v01 (using entries in the PDB archive December 27th 2017)
Refmac : 5.8.0158
CCP4 : 7.0 (Gargrove)
Ideal geometry (proteins) : Engh & Huber (2001)
Ideal geometry (DNA, RNA) : Parkinson et al. (1996)
Validation Pipeline (wwPDB-VP) : trunk30967

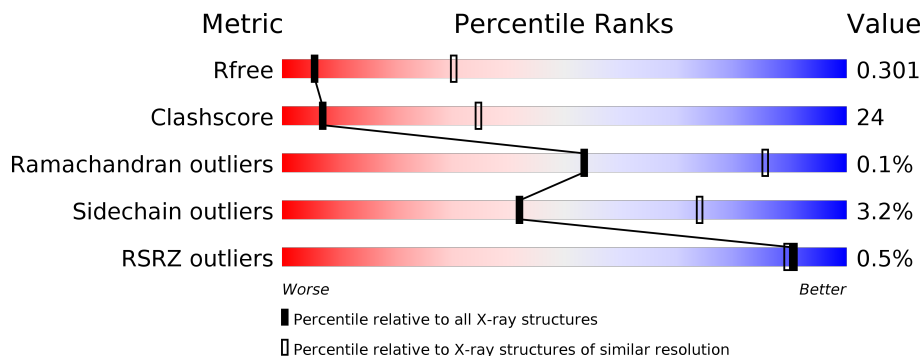
1 Overall quality at a glance

The following experimental techniques were used to determine the structure:

X-RAY DIFFRACTION

The reported resolution of this entry is 3.40 Å.

Percentile scores (ranging between 0-100) for global validation metrics of the entry are shown in the following graphic. The table shows the number of entries on which the scores are based.



Metric	Whole archive (#Entries)	Similar resolution (#Entries, resolution range(Å))
R_{free}	111664	1928 (3.50-3.30)
Clashscore	122126	2051 (3.50-3.30)
Ramachandran outliers	120053	2006 (3.50-3.30)
Sidechain outliers	120020	2006 (3.50-3.30)
RSRZ outliers	108989	1827 (3.50-3.30)

The table below summarises the geometric issues observed across the polymeric chains and their fit to the electron density. The red, orange, yellow and green segments on the lower bar indicate the fraction of residues that contain outliers for ≥ 3 , 2, 1 and 0 types of geometric quality criteria. A grey segment represents the fraction of residues that are not modelled. The numeric value for each fraction is indicated below the corresponding segment, with a dot representing fractions $\leq 5\%$. The upper red bar (where present) indicates the fraction of residues that have poor fit to the electron density. The numeric value is given above the bar.

Mol	Chain	Length	Quality of chain
1	A	479	
1	B	479	
1	C	479	
1	D	479	

The following table lists non-polymeric compounds, carbohydrate monomers and non-standard residues in protein, DNA, RNA chains that are outliers for geometric or electron-density-fit crite-

ria:

Mol	Type	Chain	Res	Chirality	Geometry	Clashes	Electron density
2	OHK	D	2000	-	-	X	-
3	PO4	A	2003	-	-	X	-
3	PO4	C	2001	-	-	X	-

2 Entry composition [i](#)

There are 3 unique types of molecules in this entry. The entry contains 13589 atoms, of which 0 are hydrogens and 0 are deuteriums.

In the tables below, the ZeroOcc column contains the number of atoms modelled with zero occupancy, the AltConf column contains the number of residues with at least one atom in alternate conformation and the Trace column contains the number of residues modelled with at most 2 atoms.

- Molecule 1 is a protein called Muscarinic acetylcholine receptor M3, Lysozyme.

Mol	Chain	Residues	Atoms					ZeroOcc	AltConf	Trace
			Total	C	N	O	S			
1	A	429	3405	2223	566	596	20	0	0	0
1	B	430	3330	2181	542	587	20	0	0	0
1	C	430	3314	2164	545	585	20	0	0	0
1	D	432	3386	2215	562	589	20	0	0	0

There are 36 discrepancies between the modelled and reference sequences:

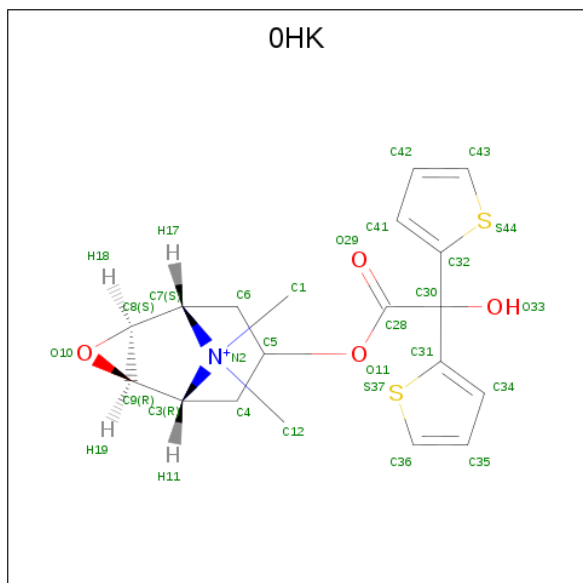
Chain	Residue	Modelled	Actual	Comment	Reference
A	56	GLY	-	EXPRESSION TAG	UNP P08483
A	1054	THR	CYS	ENGINEERED MUTATION	UNP P00720
A	1097	ALA	CYS	ENGINEERED MUTATION	UNP P00720
A	590	HIS	-	EXPRESSION TAG	UNP P08483
A	591	HIS	-	EXPRESSION TAG	UNP P08483
A	592	HIS	-	EXPRESSION TAG	UNP P08483
A	593	HIS	-	EXPRESSION TAG	UNP P08483
A	594	HIS	-	EXPRESSION TAG	UNP P08483
A	595	HIS	-	EXPRESSION TAG	UNP P08483
B	56	GLY	-	EXPRESSION TAG	UNP P08483
B	1054	THR	CYS	ENGINEERED MUTATION	UNP P00720
B	1097	ALA	CYS	ENGINEERED MUTATION	UNP P00720
B	590	HIS	-	EXPRESSION TAG	UNP P08483
B	591	HIS	-	EXPRESSION TAG	UNP P08483
B	592	HIS	-	EXPRESSION TAG	UNP P08483
B	593	HIS	-	EXPRESSION TAG	UNP P08483
B	594	HIS	-	EXPRESSION TAG	UNP P08483
B	595	HIS	-	EXPRESSION TAG	UNP P08483
C	56	GLY	-	EXPRESSION TAG	UNP P08483
C	1054	THR	CYS	ENGINEERED MUTATION	UNP P00720
C	1097	ALA	CYS	ENGINEERED MUTATION	UNP P00720

Continued on next page...

Continued from previous page...

Chain	Residue	Modelled	Actual	Comment	Reference
C	590	HIS	-	EXPRESSION TAG	UNP P08483
C	591	HIS	-	EXPRESSION TAG	UNP P08483
C	592	HIS	-	EXPRESSION TAG	UNP P08483
C	593	HIS	-	EXPRESSION TAG	UNP P08483
C	594	HIS	-	EXPRESSION TAG	UNP P08483
C	595	HIS	-	EXPRESSION TAG	UNP P08483
D	56	GLY	-	EXPRESSION TAG	UNP P08483
D	1054	THR	CYS	ENGINEERED MUTATION	UNP P00720
D	1097	ALA	CYS	ENGINEERED MUTATION	UNP P00720
D	590	HIS	-	EXPRESSION TAG	UNP P08483
D	591	HIS	-	EXPRESSION TAG	UNP P08483
D	592	HIS	-	EXPRESSION TAG	UNP P08483
D	593	HIS	-	EXPRESSION TAG	UNP P08483
D	594	HIS	-	EXPRESSION TAG	UNP P08483
D	595	HIS	-	EXPRESSION TAG	UNP P08483

- Molecule 2 is (1R,2R,4S,5S,7S)-7-{[hydroxy(dithiophen-2-yl)acetyl]oxy}-9,9-dimethyl-3-oxa-9-azoniatricyclo[3.3.1.0 2,4]nonane (three-letter code: OHK) (formula: C₁₉H₂₂NO₄S₂).



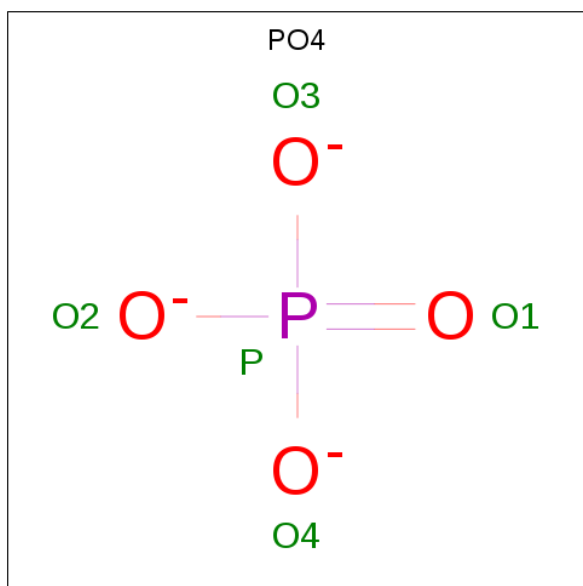
Mol	Chain	Residues	Atoms				ZeroOcc	AltConf	
2	A	1	Total	C	N	O	S	0	0
			26	19	1	4	2		
2	B	1	Total	C	N	O	S	0	0
			26	19	1	4	2		
2	C	1	Total	C	N	O	S	0	0
			26	19	1	4	2		

Continued on next page...

Continued from previous page...

Mol	Chain	Residues	Atoms					ZeroOcc	AltConf
			Total	C	N	O	S		
2	D	1	26	19	1	4	2	0	0

- Molecule 3 is PHOSPHATE ION (three-letter code: PO4) (formula: O₄P).

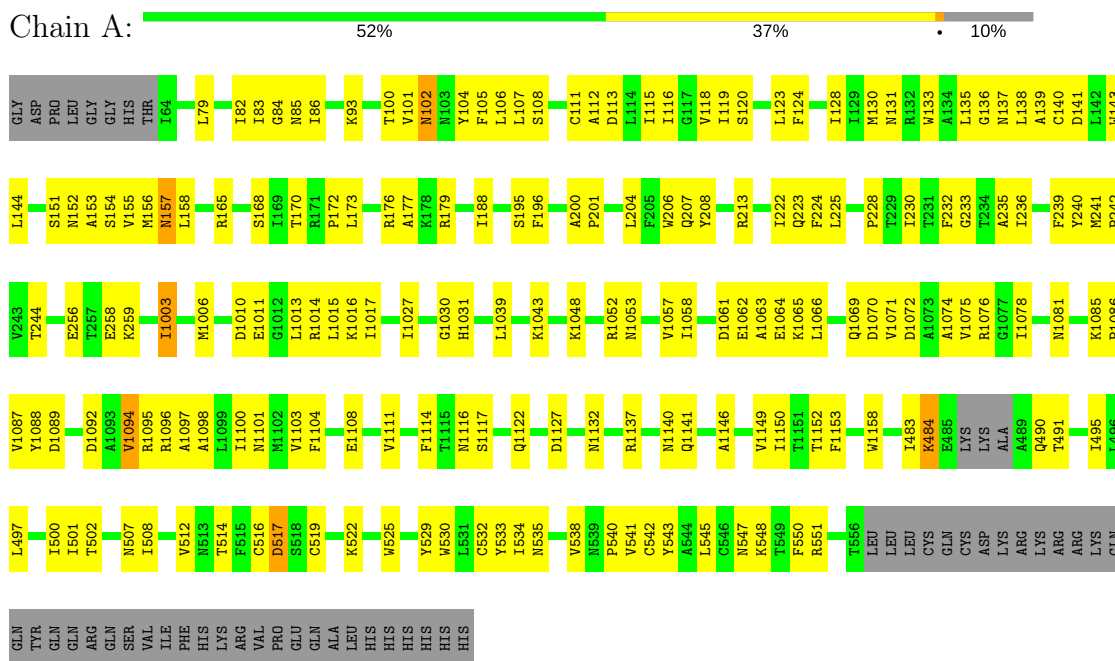


Mol	Chain	Residues	Atoms			ZeroOcc	AltConf
3	A	1	Total	O	P	0	0
			5	4	1		
3	A	1	Total	O	P	0	0
			5	4	1		
3	A	1	Total	O	P	0	0
			5	4	1		
3	A	1	Total	O	P	0	0
			5	4	1		
3	B	1	Total	O	P	0	0
			5	4	1		
3	C	1	Total	O	P	0	0
			5	4	1		
3	C	1	Total	O	P	0	0
			5	4	1		
3	D	1	Total	O	P	0	0
			5	4	1		
3	D	1	Total	O	P	0	0
			5	4	1		
3	D	1	Total	O	P	0	0
			5	4	1		

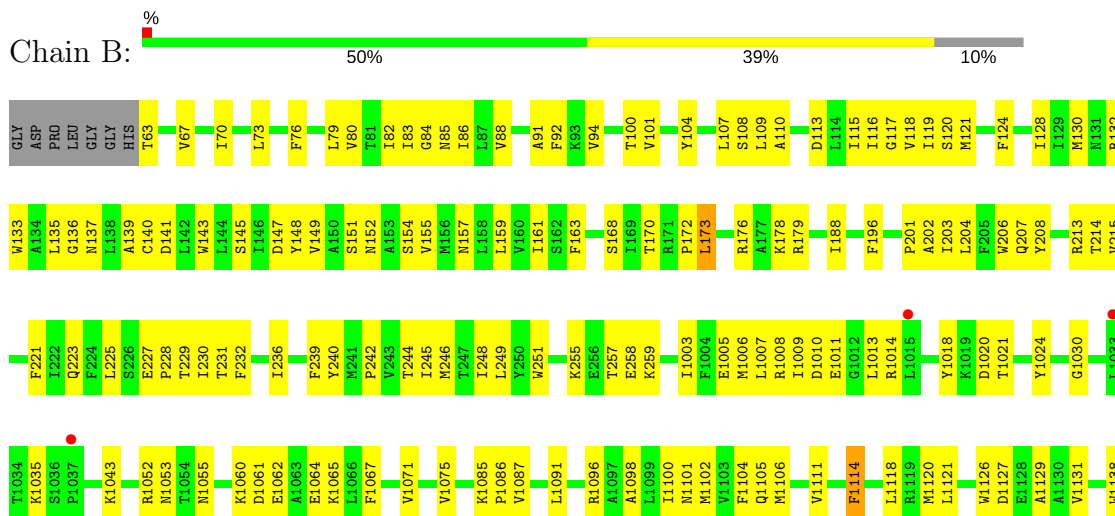
3 Residue-property plots

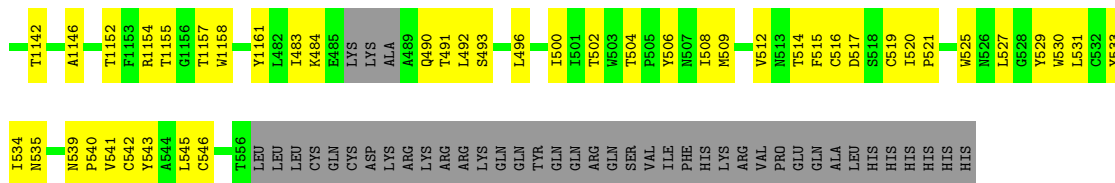
These plots are drawn for all protein, RNA and DNA chains in the entry. The first graphic for a chain summarises the proportions of the various outlier classes displayed in the second graphic. The second graphic shows the sequence view annotated by issues in geometry and electron density. Residues are color-coded according to the number of geometric quality criteria for which they contain at least one outlier: green = 0, yellow = 1, orange = 2 and red = 3 or more. A red dot above a residue indicates a poor fit to the electron density ($RSRZ > 2$). Stretches of 2 or more consecutive residues without any outlier are shown as a green connector. Residues present in the sample, but not in the model, are shown in grey.

- Molecule 1: Muscarinic acetylcholine receptor M3, Lysozyme

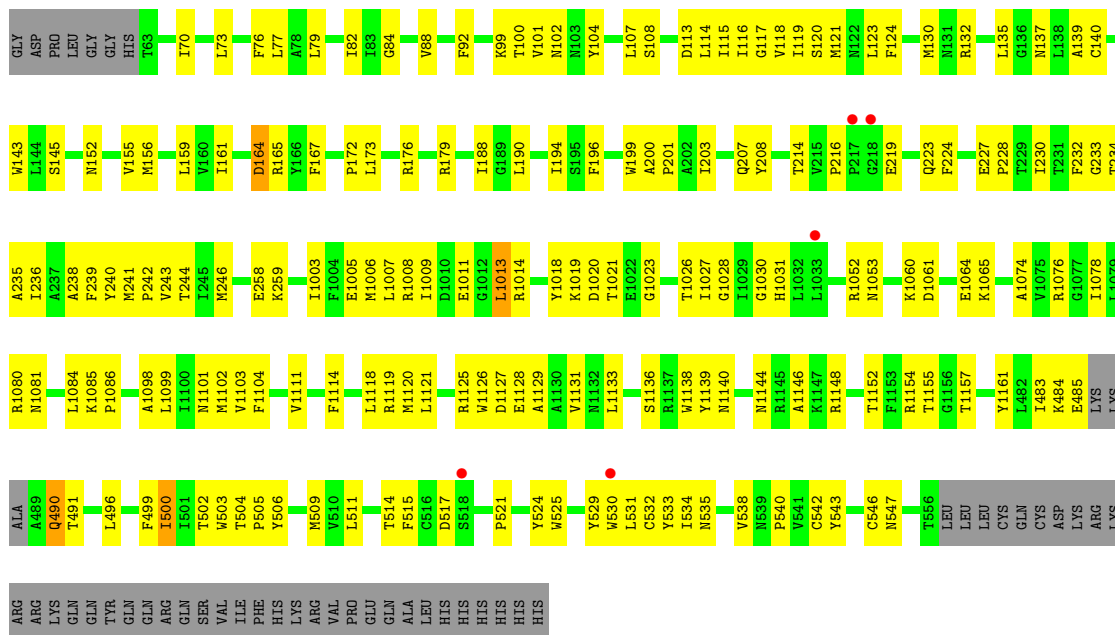


- Molecule 1: Muscarinic acetylcholine receptor M3, Lysozyme

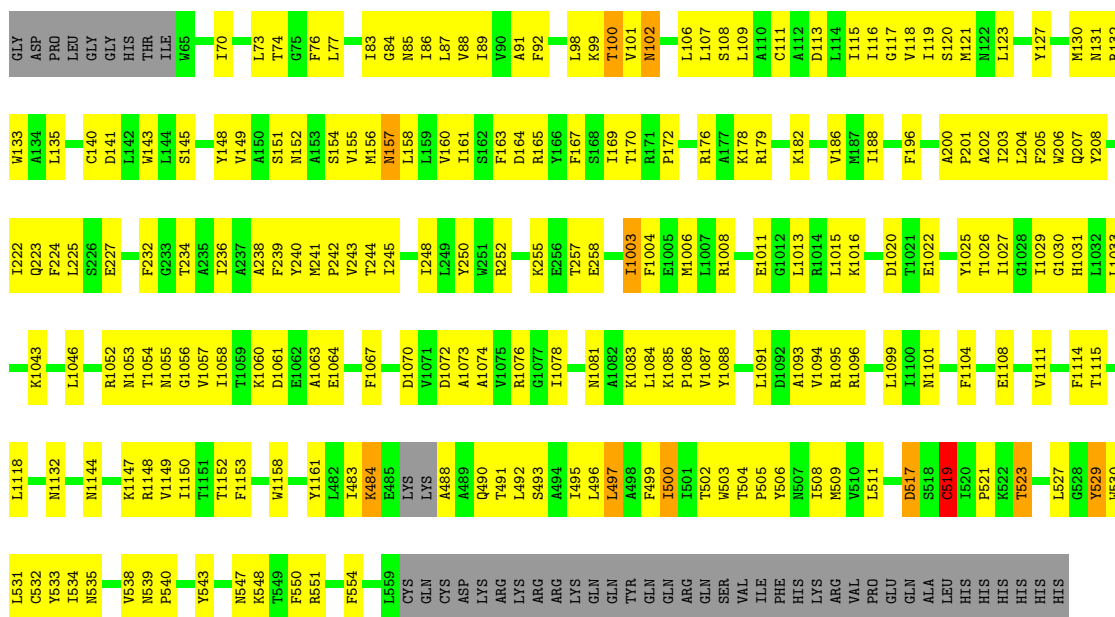




• Molecule 1: Muscarinic acetylcholine receptor M3, Lysozyme



• Molecule 1: Muscarinic acetylcholine receptor M3, Lysozyme



4 Data and refinement statistics

Property	Value	Source
Space group	P 1	Depositor
Cell constants a, b, c, α , β , γ	54.77Å 61.31Å 176.91Å 85.87° 89.90° 84.90°	Depositor
Resolution (Å)	39.90 – 3.40 39.90 – 3.40	Depositor EDS
% Data completeness (in resolution range)	82.9 (39.90-3.40) 82.9 (39.90-3.40)	Depositor EDS
R_{merge}	0.23	Depositor
R_{sym}	(Not available)	Depositor
$\langle I/\sigma(I) \rangle$ ¹	2.55 (at 3.40Å)	Xtrriage
Refinement program	PHENIX (phenix.refine: 1.7_650)	Depositor
R, R_{free}	0.251 , 0.303 0.242 , 0.301	Depositor DCC
R_{free} test set	1277 reflections (4.91%)	wwPDB-VP
Wilson B-factor (Å ²)	80.5	Xtrriage
Anisotropy	0.035	Xtrriage
Bulk solvent k_{sol} (e/Å ³), B_{sol} (Å ²)	0.28 , 41.6	EDS
L-test for twinning ²	$\langle L \rangle = 0.38$, $\langle L^2 \rangle = 0.21$	Xtrriage
Estimated twinning fraction	No twinning to report.	Xtrriage
F_o, F_c correlation	0.88	EDS
Total number of atoms	13589	wwPDB-VP
Average B, all atoms (Å ²)	88.0	wwPDB-VP

Xtrriage's analysis on translational NCS is as follows: *The largest off-origin peak in the Patterson function is 8.30% of the height of the origin peak. No significant pseudotranslation is detected.*

¹Intensities estimated from amplitudes.

²Theoretical values of $\langle |L| \rangle$, $\langle L^2 \rangle$ for acentric reflections are 0.5, 0.333 respectively for untwinned datasets, and 0.375, 0.2 for perfectly twinned datasets.

5 Model quality [i](#)

5.1 Standard geometry [i](#)

Bond lengths and bond angles in the following residue types are not validated in this section: 0HK, PO4

The Z score for a bond length (or angle) is the number of standard deviations the observed value is removed from the expected value. A bond length (or angle) with $|Z| > 5$ is considered an outlier worth inspection. RMSZ is the root-mean-square of all Z scores of the bond lengths (or angles).

Mol	Chain	Bond lengths		Bond angles	
		RMSZ	# Z >5	RMSZ	# Z >5
1	A	0.30	0/3482	0.48	0/4738
1	B	0.29	0/3407	0.49	1/4655 (0.0%)
1	C	0.27	0/3391	0.45	0/4639
1	D	0.30	0/3465	0.50	1/4726 (0.0%)
All	All	0.29	0/13745	0.48	2/18758 (0.0%)

There are no bond length outliers.

All (2) bond angle outliers are listed below:

Mol	Chain	Res	Type	Atoms	Z	Observed(°)	Ideal(°)
1	B	516	CYS	CB-CA-C	6.17	122.73	110.40
1	D	519	CYS	CA-CB-SG	-6.07	103.07	114.00

There are no chirality outliers.

There are no planarity outliers.

5.2 Too-close contacts [i](#)

In the following table, the Non-H and H(model) columns list the number of non-hydrogen atoms and hydrogen atoms in the chain respectively. The H(added) column lists the number of hydrogen atoms added and optimized by MolProbity. The Clashes column lists the number of clashes within the asymmetric unit, whereas Symm-Clashes lists symmetry related clashes.

Mol	Chain	Non-H	H(model)	H(added)	Clashes	Symm-Clashes
1	A	3405	0	3451	159	0
1	B	3330	0	3304	153	0
1	C	3314	0	3243	152	0
1	D	3386	0	3391	195	0
2	A	26	0	22	7	0

Continued on next page...

Continued from previous page...

Mol	Chain	Non-H	H(model)	H(added)	Clashes	Symm-Clashes
2	B	26	0	22	7	0
2	C	26	0	22	7	0
2	D	26	0	22	11	0
3	A	20	0	0	2	0
3	B	5	0	0	0	0
3	C	10	0	0	3	0
3	D	15	0	0	0	0
All	All	13589	0	13477	655	0

The all-atom clashscore is defined as the number of clashes found per 1000 atoms (including hydrogen atoms). The all-atom clashscore for this structure is 24.

All (655) close contacts within the same asymmetric unit are listed below, sorted by their clash magnitude.

Atom-1	Atom-2	Interatomic distance (Å)	Clash overlap (Å)
1:D:108:SER:HB2	1:D:188:ILE:HD13	1.36	1.08
1:D:484:LYS:H	1:D:484:LYS:HD3	1.24	0.98
1:D:120:SER:HA	1:D:143:TRP:HE1	1.27	0.96
1:C:152:ASN:HB2	2:C:2000:0HK:H6	1.50	0.94
2:D:2000:0HK:H20	2:D:2000:0HK:O10	1.70	0.91
1:A:1158:TRP:HB3	1:A:483:ILE:HB	1.52	0.91
1:D:490:GLN:O	1:D:491:THR:HG22	1.72	0.88
1:D:1011:GLU:HG2	1:D:1030:GLY:H	1.37	0.88
1:A:484:LYS:HD2	1:A:484:LYS:H	1.39	0.87
1:D:1011:GLU:HG2	1:D:1030:GLY:N	1.89	0.87
1:B:502:THR:OG1	1:B:535:ASN:HB2	1.76	0.85
2:C:2000:0HK:H20	2:C:2000:0HK:O10	1.75	0.84
1:A:120:SER:HA	1:A:143:TRP:HE1	1.41	0.83
2:B:2000:0HK:H20	2:B:2000:0HK:O10	1.79	0.83
1:D:118:VAL:HG13	1:D:119:ILE:HG13	1.64	0.80
1:B:70:ILE:O	1:B:73:LEU:HB3	1.82	0.80
1:D:1158:TRP:HB3	1:D:483:ILE:HB	1.63	0.80
1:C:1052:ARG:HG2	1:C:1053:ASN:H	1.48	0.79
1:D:502:THR:OG1	1:D:535:ASN:HB2	1.82	0.79
1:D:148:TYR:CD2	2:D:2000:0HK:H5	2.18	0.79
1:C:135:LEU:HB3	1:C:139:ALA:HB3	1.65	0.78
1:D:484:LYS:N	1:D:484:LYS:HD3	1.98	0.77
1:A:108:SER:HB2	1:A:188:ILE:HD13	1.67	0.77
1:A:236:ILE:HA	1:A:240:TYR:HD2	1.49	0.77
1:B:159:LEU:HD23	1:B:246:MET:HG3	1.66	0.77
1:C:152:ASN:CB	2:C:2000:0HK:H6	2.16	0.75

Continued on next page...

Continued from previous page...

Atom-1	Atom-2	Interatomic distance (Å)	Clash overlap (Å)
1:A:547:ASN:HB2	1:A:550:PHE:HD2	1.51	0.75
1:D:152:ASN:O	1:D:155:VAL:HG22	1.87	0.74
1:C:1052:ARG:HG2	1:C:1053:ASN:N	2.03	0.74
1:D:148:TYR:HD2	2:D:2000:0HK:H5	1.51	0.73
1:C:233:GLY:HA3	1:D:245:ILE:HD11	1.69	0.73
1:C:259:LYS:HA	1:C:1003:ILE:HG12	1.70	0.73
1:A:118:VAL:HG13	1:A:119:ILE:HG13	1.71	0.72
1:B:1052:ARG:HG2	1:B:1053:ASN:H	1.54	0.72
1:B:227:GLU:HB3	1:B:230:ILE:HG22	1.72	0.71
1:A:241:MET:HB3	1:A:242:PRO:HD3	1.72	0.71
1:D:201:PRO:O	1:D:205:PHE:HB2	1.90	0.71
1:B:227:GLU:CD	1:B:228:PRO:HD2	2.11	0.70
1:D:523:THR:O	1:D:527:LEU:HD13	1.89	0.70
1:A:1011:GLU:HG2	1:A:1030:GLY:H	1.56	0.70
1:D:258:GLU:O	1:D:1003:ILE:HG23	1.92	0.70
1:C:491:THR:HA	1:C:546:CYS:SG	2.31	0.70
1:D:148:TYR:CE2	2:D:2000:0HK:H4	2.27	0.69
1:B:259:LYS:HA	1:B:1003:ILE:HG12	1.72	0.69
1:A:534:ILE:O	1:A:538:VAL:HG23	1.93	0.69
1:C:1060:LYS:HD3	3:C:2001:PO4:O2	1.92	0.69
1:D:1015:LEU:HD22	1:D:1058:ILE:O	1.92	0.69
1:D:120:SER:HA	1:D:143:TRP:NE1	2.06	0.69
1:D:108:SER:HB2	1:D:188:ILE:CD1	2.20	0.69
1:D:239:PHE:CE2	1:D:243:VAL:HG21	2.27	0.69
1:A:1011:GLU:HG2	1:A:1030:GLY:N	2.08	0.68
2:A:2000:0HK:O10	2:A:2000:0HK:H20	1.93	0.68
1:B:113:ASP:O	1:B:116:ILE:HG22	1.93	0.68
1:B:137:ASN:O	1:B:140:CYS:HB3	1.93	0.68
1:D:1016:LYS:HG2	1:D:1057:VAL:HG22	1.75	0.68
1:D:517:ASP:OD1	1:D:517:ASP:N	2.27	0.68
1:C:499:PHE:HA	1:C:535:ASN:ND2	2.08	0.68
1:D:1026:THR:HG23	1:D:1031:HIS:O	1.94	0.67
1:B:1127:ASP:HA	1:B:1154:ARG:HD3	1.76	0.67
1:C:1138:TRP:CH2	1:C:1146:ALA:HA	2.29	0.67
1:D:232:PHE:CE2	1:D:236:ILE:HD11	2.30	0.67
1:A:83:ILE:O	1:A:86:ILE:HG22	1.95	0.67
1:D:109:LEU:HD12	1:D:157:ASN:ND2	2.11	0.66
1:B:258:GLU:O	1:B:1003:ILE:HG23	1.94	0.66
1:D:1011:GLU:HG2	1:D:1030:GLY:CA	2.26	0.66
1:C:123:LEU:HD22	1:C:143:TRP:CD1	2.30	0.66
1:D:141:ASP:HB3	1:D:204:LEU:HD23	1.76	0.66

Continued on next page...

Continued from previous page...

Atom-1	Atom-2	Interatomic distance (Å)	Clash overlap (Å)
1:C:156:MET:HA	1:C:159:LEU:HD12	1.77	0.66
1:B:152:ASN:HB2	2:B:2000:OHK:H6	1.78	0.66
1:B:118:VAL:HG13	1:B:119:ILE:HG13	1.76	0.65
1:B:1114:PHE:O	1:B:1118:LEU:HG	1.96	0.65
1:D:539:ASN:HB2	1:D:540:PRO:HD3	1.79	0.65
1:A:1011:GLU:HG2	1:A:1030:GLY:CA	2.26	0.65
1:A:236:ILE:HA	1:A:240:TYR:CD2	2.31	0.65
1:C:233:GLY:HA3	1:D:241:MET:HE2	1.78	0.65
1:D:1072:ASP:O	1:D:1076:ARG:HG3	1.96	0.65
1:A:1087:VAL:HG22	1:A:1122:GLN:HB2	1.79	0.65
1:A:1011:GLU:HG2	1:A:1030:GLY:HA2	1.77	0.64
1:C:1127:ASP:HA	1:C:1154:ARG:HD3	1.80	0.64
1:A:152:ASN:O	1:A:155:VAL:HG22	1.98	0.64
1:A:1015:LEU:HD22	1:A:1058:ILE:O	1.98	0.64
1:C:102:ASN:HB3	1:C:165:ARG:NH2	2.13	0.64
1:B:1052:ARG:HG2	1:B:1053:ASN:N	2.13	0.64
1:D:236:ILE:HA	1:D:240:TYR:HB2	1.80	0.64
1:B:1067:PHE:O	1:B:1071:VAL:HG23	1.98	0.64
1:B:120:SER:HA	1:B:143:TRP:HE1	1.63	0.63
1:D:239:PHE:C	1:D:242:PRO:HD2	2.19	0.63
1:D:239:PHE:CZ	1:D:243:VAL:HG21	2.33	0.63
1:C:484:LYS:O	1:C:485:GLU:HB3	1.98	0.63
1:D:109:LEU:HD12	1:D:157:ASN:HD22	1.64	0.63
1:B:163:PHE:CE2	1:B:249:LEU:HD11	2.32	0.63
1:C:102:ASN:HB3	1:C:165:ARG:HH22	1.64	0.63
1:D:1052:ARG:HG2	1:D:1053:ASN:H	1.64	0.63
1:A:517:ASP:N	1:A:517:ASP:OD1	2.30	0.62
1:B:1085:LYS:HB3	1:B:1086:PRO:HD3	1.80	0.62
1:A:1085:LYS:HB3	1:A:1086:PRO:HD3	1.81	0.62
1:C:1007:LEU:O	1:C:1011:GLU:HB3	1.99	0.62
1:C:124:PHE:HB2	1:C:143:TRP:HZ2	1.64	0.62
1:B:1007:LEU:O	1:B:1011:GLU:HB3	1.99	0.62
1:A:508:ILE:O	1:A:512:VAL:HG23	1.99	0.62
1:C:502:THR:OG1	1:C:535:ASN:HB2	2.00	0.62
1:D:207:GLN:HE21	1:D:208:TYR:HE2	1.48	0.62
1:A:1092:ASP:OD2	1:A:1095:ARG:HD2	2.00	0.61
1:B:232:PHE:CE2	1:B:236:ILE:HD11	2.34	0.61
1:B:227:GLU:OE2	1:B:228:PRO:HD2	2.00	0.61
1:B:1043:LYS:HE3	1:B:1055:ASN:HA	1.83	0.61
1:A:1146:ALA:O	1:A:1150:ILE:HG13	2.01	0.61
1:C:1098:ALA:O	1:C:1101:ASN:HB3	2.01	0.61

Continued on next page...

Continued from previous page...

Atom-1	Atom-2	Interatomic distance (Å)	Clash overlap (Å)
1:D:239:PHE:O	1:D:242:PRO:HD2	2.00	0.60
1:A:502:THR:OG1	1:A:535:ASN:HB2	2.01	0.60
1:B:1106:MET:HE3	1:B:1111:VAL:HG22	1.83	0.60
1:D:172:PRO:HA	1:D:176:ARG:HB2	1.83	0.60
1:C:236:ILE:HG21	1:D:241:MET:HB2	1.83	0.60
1:A:152:ASN:HD22	1:A:195:SER:CB	2.15	0.59
1:D:1011:GLU:CD	1:D:1030:GLY:HA2	2.22	0.59
1:D:111:CYS:O	1:D:115:ILE:HG22	2.02	0.59
1:A:79:LEU:O	1:A:82:ILE:HG12	2.01	0.59
1:C:161:ILE:O	1:C:164:ASP:HB3	2.02	0.59
1:D:102:ASN:HB3	1:D:165:ARG:NH2	2.18	0.59
1:D:170:THR:O	1:D:172:PRO:HD3	2.02	0.59
1:B:85:ASN:OD1	1:B:540:PRO:HG3	2.03	0.59
1:C:196:PHE:O	1:C:201:PRO:HD3	2.02	0.59
1:D:493:SER:O	1:D:497:LEU:HB2	2.02	0.59
1:B:1152:THR:HG1	1:B:1161:TYR:HE2	1.50	0.59
1:B:1010:ASP:OD1	1:B:1161:TYR:HE1	1.86	0.59
1:B:178:LYS:HA	1:C:1131:VAL:HG11	1.84	0.59
1:D:1052:ARG:HG2	1:D:1053:ASN:N	2.17	0.59
1:C:77:LEU:HD21	1:C:534:ILE:HG22	1.85	0.59
1:C:540:PRO:O	1:C:543:TYR:HB2	2.03	0.59
1:A:222:ILE:HD12	1:A:225:LEU:HD12	1.85	0.59
1:C:228:PRO:HB2	1:C:514:THR:HA	1.85	0.58
1:D:113:ASP:O	1:D:116:ILE:HG22	2.02	0.58
1:D:529:TYR:CZ	2:D:2000:OHK:H11	2.38	0.58
1:A:516:CYS:O	1:A:519:CYS:SG	2.62	0.58
1:A:79:LEU:HD12	1:A:82:ILE:HD11	1.85	0.58
1:A:1088:TYR:CE1	1:A:1096:ARG:HG3	2.39	0.58
1:C:135:LEU:HD13	1:C:139:ALA:HB1	1.85	0.58
1:B:133:TRP:NE1	1:B:136:GLY:O	2.37	0.58
1:D:127:TYR:HD1	1:D:133:TRP:HE3	1.51	0.57
1:B:79:LEU:HD23	1:B:82:ILE:HD11	1.86	0.57
1:D:77:LEU:HD21	1:D:534:ILE:HG22	1.86	0.57
1:C:70:ILE:O	1:C:73:LEU:HB3	2.05	0.57
1:B:530:TRP:O	1:B:534:ILE:HG23	2.04	0.57
1:A:100:THR:HG22	1:A:101:VAL:H	1.68	0.57
1:D:101:VAL:HB	1:D:179:ARG:NH2	2.20	0.57
1:C:1076:ARG:O	1:C:1080:ARG:HG3	2.05	0.57
1:C:258:GLU:HG3	1:C:259:LYS:N	2.20	0.57
1:A:1039:LEU:O	1:A:1043:LYS:HG3	2.04	0.57
1:C:152:ASN:O	1:C:155:VAL:HG22	2.04	0.57

Continued on next page...

Continued from previous page...

Atom-1	Atom-2	Interatomic distance (Å)	Clash overlap (Å)
1:D:232:PHE:CE1	1:D:511:LEU:HD13	2.40	0.56
1:C:241:MET:HB3	1:C:242:PRO:HD3	1.87	0.56
1:B:151:SER:CB	2:B:2000:0HK:H17	2.35	0.56
1:B:1020:ASP:OD2	1:B:1021:THR:N	2.39	0.56
1:B:1138:TRP:CH2	1:B:1146:ALA:HA	2.41	0.56
1:B:135:LEU:HB3	1:B:139:ALA:HB3	1.88	0.56
1:D:1006:MET:HE2	1:D:1101:ASN:HD22	1.68	0.56
1:B:1127:ASP:HA	1:B:1154:ARG:CD	2.35	0.56
1:B:151:SER:O	1:B:154:SER:HB3	2.06	0.56
1:B:215:VAL:HG22	1:B:221:PHE:CZ	2.41	0.56
1:B:1100:ILE:O	1:B:1104:PHE:HB2	2.04	0.56
1:D:1011:GLU:HG2	1:D:1030:GLY:HA2	1.87	0.56
1:C:1152:THR:OG1	1:C:1161:TYR:HE2	1.88	0.55
1:D:149:VAL:HG22	1:D:196:PHE:HA	1.88	0.55
1:B:170:THR:O	1:B:172:PRO:HD3	2.06	0.55
1:B:496:LEU:O	1:B:500:ILE:HG22	2.06	0.55
1:D:550:PHE:O	1:D:554:PHE:CD1	2.59	0.55
2:A:2000:0HK:H1	2:A:2000:0HK:O11	2.06	0.55
1:D:530:TRP:O	1:D:534:ILE:HG23	2.07	0.55
1:B:1158:TRP:CE3	1:B:483:ILE:HD12	2.41	0.55
1:C:258:GLU:O	1:C:1003:ILE:HG23	2.06	0.55
1:C:1008:ARG:CZ	1:C:1013:LEU:HB3	2.37	0.55
1:D:1011:GLU:OE1	1:D:1030:GLY:HA2	2.05	0.55
1:D:156:MET:O	1:D:160:VAL:HG23	2.07	0.55
1:D:206:TRP:CE2	1:D:224:PHE:HB3	2.42	0.55
1:B:159:LEU:HD23	1:B:246:MET:CG	2.35	0.55
1:A:548:LYS:HA	1:A:551:ARG:HD2	1.87	0.55
1:B:531:LEU:O	1:B:534:ILE:HG12	2.07	0.55
1:D:1061:ASP:O	1:D:1064:GLU:HG2	2.07	0.55
1:D:534:ILE:O	1:D:538:VAL:HG23	2.07	0.55
1:B:88:VAL:HG11	1:B:110:ALA:HB2	1.89	0.55
1:C:1030:GLY:HA3	1:C:1104:PHE:HE2	1.71	0.55
1:C:152:ASN:HB2	2:C:2000:0HK:C43	2.32	0.55
1:B:1060:LYS:NZ	1:C:1154:ARG:HH12	2.05	0.55
1:D:1011:GLU:HG3	1:D:1011:GLU:O	2.07	0.55
1:A:176:ARG:HA	1:A:179:ARG:HD3	1.88	0.54
1:A:540:PRO:O	1:A:543:TYR:HB2	2.07	0.54
1:B:76:PHE:O	1:B:80:VAL:HG23	2.08	0.54
1:D:130:MET:HE2	1:D:132:ARG:CZ	2.37	0.54
1:A:112:ALA:O	1:A:116:ILE:HG22	2.07	0.54
1:B:168:SER:O	1:B:176:ARG:HG3	2.08	0.54

Continued on next page...

Continued from previous page...

Atom-1	Atom-2	Interatomic distance (Å)	Clash overlap (Å)
1:A:83:ILE:HA	1:A:86:ILE:HG22	1.89	0.54
1:A:530:TRP:CE3	1:A:533:TYR:HD2	2.26	0.54
1:C:1019:LYS:HE3	1:C:1023:GLY:O	2.08	0.54
1:C:1085:LYS:HB3	1:C:1086:PRO:HD3	1.89	0.54
1:C:239:PHE:CE2	1:C:504:THR:HG22	2.42	0.54
1:D:1070:ASP:O	1:D:1073:ALA:HB3	2.07	0.54
1:D:1115:THR:HA	1:D:1118:LEU:HD12	1.88	0.54
1:B:159:LEU:HD11	1:B:242:PRO:HB3	1.89	0.54
1:D:1030:GLY:HA3	1:D:1104:PHE:CZ	2.42	0.54
1:D:108:SER:HB3	1:D:157:ASN:HD21	1.72	0.54
1:D:206:TRP:HD1	1:D:223:GLN:HB3	1.73	0.54
1:A:100:THR:O	1:A:104:TYR:HB2	2.07	0.54
1:D:200:ALA:HB3	1:D:201:PRO:HD3	1.89	0.54
1:B:92:PHE:CE2	1:B:107:LEU:HD12	2.43	0.54
1:B:508:ILE:O	1:B:512:VAL:HG23	2.08	0.54
1:C:490:GLN:HE21	1:C:547:ASN:HD21	1.56	0.54
1:D:120:SER:HB3	1:D:533:TYR:OH	2.07	0.54
1:A:532:CYS:CB	2:A:2000:0HK:H9	2.38	0.54
1:B:124:PHE:HE2	1:B:530:TRP:CD1	2.26	0.54
1:A:258:GLU:O	1:A:1003:ILE:HG23	2.08	0.54
1:A:233:GLY:HA3	1:B:245:ILE:HD11	1.90	0.54
1:C:239:PHE:O	1:C:242:PRO:HD2	2.08	0.54
1:C:108:SER:HB2	1:C:188:ILE:HD13	1.91	0.53
1:C:490:GLN:NE2	1:C:547:ASN:HD21	2.06	0.53
1:D:207:GLN:HG3	1:D:208:TYR:CD2	2.43	0.53
1:D:240:TYR:O	1:D:244:THR:HG23	2.08	0.53
1:C:130:MET:C	1:C:132:ARG:H	2.11	0.53
1:A:113:ASP:HA	1:A:116:ILE:HG22	1.91	0.53
1:A:152:ASN:ND2	1:A:195:SER:HA	2.23	0.53
1:C:1127:ASP:O	1:C:1131:VAL:HG23	2.08	0.53
1:D:158:LEU:HD21	1:D:495:ILE:HG22	1.90	0.53
1:A:1137:ARG:O	1:A:1141:GLN:HG2	2.08	0.53
1:A:113:ASP:HA	1:A:116:ILE:CG2	2.38	0.53
1:B:1121:LEU:HD23	1:B:1126:TRP:CE3	2.44	0.53
1:C:1078:ILE:HD11	1:C:1103:VAL:HG21	1.90	0.53
1:C:176:ARG:O	1:C:179:ARG:HG2	2.09	0.53
1:A:100:THR:HG22	1:A:101:VAL:N	2.24	0.53
1:A:151:SER:O	1:A:154:SER:HB3	2.08	0.53
1:C:216:PRO:HG2	1:C:219:GLU:OE1	2.09	0.53
1:A:497:LEU:O	1:A:501:ILE:HG22	2.09	0.53
1:D:148:TYR:HE2	2:D:2000:0HK:H4	1.73	0.53

Continued on next page...

Continued from previous page...

Atom-1	Atom-2	Interatomic distance (Å)	Clash overlap (Å)
1:A:1078:ILE:HG21	1:A:1088:TYR:CD1	2.44	0.52
1:A:1061:ASP:O	1:A:1064:GLU:HG2	2.09	0.52
1:A:93:LYS:HE2	1:A:107:LEU:HD11	1.92	0.52
1:B:1087:VAL:O	1:B:1091:LEU:HG	2.10	0.52
1:A:235:ALA:O	1:A:239:PHE:HB3	2.10	0.52
1:B:101:VAL:CG1	1:B:179:ARG:HH21	2.22	0.52
1:C:521:PRO:HD2	1:C:524:TYR:CD2	2.44	0.52
1:D:499:PHE:O	1:D:503:TRP:HB2	2.10	0.52
1:A:1074:ALA:O	1:A:1078:ILE:HG13	2.10	0.52
1:B:79:LEU:O	1:B:82:ILE:HG12	2.10	0.52
1:D:83:ILE:HA	1:D:86:ILE:HG22	1.92	0.52
1:A:522:LYS:HA	1:A:525:TRP:HD1	1.75	0.52
1:A:124:PHE:CE2	1:A:128:ILE:HD11	2.45	0.52
1:A:105:PHE:HD1	1:A:188:ILE:HD11	1.73	0.52
1:A:547:ASN:HB2	1:A:550:PHE:CD2	2.40	0.52
1:C:240:TYR:O	1:C:244:THR:HG23	2.10	0.52
1:D:248:ILE:O	1:D:252:ARG:HG3	2.10	0.52
1:B:92:PHE:CD2	1:B:107:LEU:HD12	2.45	0.51
1:A:1149:VAL:HG12	1:A:1153:PHE:CE2	2.45	0.51
1:D:157:ASN:O	1:D:161:ILE:HG13	2.10	0.51
1:B:145:SER:O	1:B:149:VAL:HG23	2.10	0.51
1:B:502:THR:CB	1:B:535:ASN:HB2	2.41	0.51
1:B:83:ILE:HA	1:B:86:ILE:HG22	1.91	0.51
1:D:113:ASP:HA	1:D:116:ILE:HG22	1.91	0.51
1:D:151:SER:O	1:D:154:SER:HB3	2.11	0.51
1:C:100:THR:HG22	1:C:101:VAL:N	2.26	0.51
1:C:224:PHE:O	1:C:230:ILE:HD13	2.11	0.51
1:D:504:THR:OG1	1:D:505:PRO:HD3	2.10	0.51
1:D:241:MET:HB3	1:D:242:PRO:HD3	1.92	0.51
1:B:109:LEU:HG	1:B:157:ASN:ND2	2.25	0.51
1:B:214:THR:HB	1:B:223:GLN:HG3	1.91	0.51
1:B:1013:LEU:O	1:C:1155:THR:HA	2.10	0.51
1:B:228:PRO:HB2	1:B:514:THR:HA	1.93	0.51
1:C:530:TRP:O	1:C:534:ILE:HG23	2.11	0.51
1:D:1011:GLU:CG	1:D:1030:GLY:HA2	2.40	0.51
2:B:2000:OHK:H18	2:B:2000:OHK:C41	2.40	0.51
1:C:117:GLY:HA2	1:C:121:MET:SD	2.51	0.51
1:C:233:GLY:CA	1:D:245:ILE:HD11	2.41	0.51
1:C:167:PHE:HZ	1:D:227:GLU:HG3	1.75	0.51
1:A:153:ALA:O	1:A:157:ASN:HB2	2.11	0.50
1:A:258:GLU:HG2	1:A:1003:ILE:HG23	1.94	0.50

Continued on next page...

Continued from previous page...

Atom-1	Atom-2	Interatomic distance (Å)	Clash overlap (Å)
1:B:196:PHE:O	1:B:201:PRO:HD3	2.11	0.50
1:A:1149:VAL:HG12	1:A:1153:PHE:HE2	1.76	0.50
1:C:534:ILE:O	1:C:538:VAL:HG23	2.11	0.50
1:D:1025:TYR:O	1:D:1033:LEU:HB2	2.12	0.50
1:A:138:LEU:HD23	1:A:138:LEU:O	2.12	0.50
1:A:532:CYS:CB	2:A:2000:OHK:C1	2.90	0.50
1:A:239:PHE:O	1:A:242:PRO:HD2	2.12	0.50
1:C:120:SER:HA	1:C:143:TRP:HE1	1.76	0.50
1:D:531:LEU:O	1:D:534:ILE:HG12	2.11	0.50
1:B:101:VAL:HG11	1:B:179:ARG:HH21	1.75	0.50
1:B:113:ASP:HA	1:B:116:ILE:HG22	1.94	0.50
1:B:124:PHE:CE2	1:B:128:ILE:HD11	2.47	0.50
1:B:244:THR:O	1:B:248:ILE:HG13	2.12	0.50
1:B:130:MET:O	1:B:132:ARG:HG2	2.12	0.50
1:B:491:THR:HA	1:B:546:CYS:SG	2.52	0.50
1:D:92:PHE:CE1	1:D:99:LYS:HG2	2.47	0.50
1:A:1065:LYS:O	1:A:1069:GLN:HG3	2.12	0.49
1:B:117:GLY:HA2	1:B:121:MET:SD	2.52	0.49
1:A:1078:ILE:CD1	1:A:1100:ILE:HG12	2.42	0.49
1:A:232:PHE:CZ	1:A:236:ILE:HD11	2.47	0.49
1:C:239:PHE:HB2	2:C:2000:OHK:O33	2.12	0.49
1:C:531:LEU:HA	1:C:534:ILE:HG12	1.93	0.49
1:D:170:THR:C	1:D:172:PRO:HD3	2.32	0.49
1:C:159:LEU:HD23	1:C:246:MET:HG3	1.95	0.49
1:C:1144:ASN:HB3	1:C:1148:ARG:NH2	2.27	0.49
1:A:108:SER:CB	1:A:188:ILE:HD13	2.41	0.49
1:D:238:ALA:O	1:D:242:PRO:HG2	2.12	0.49
1:D:257:THR:HG23	1:D:488:ALA:HB3	1.93	0.49
1:D:496:LEU:O	1:D:500:ILE:HG22	2.12	0.49
1:B:115:ILE:HA	1:B:118:VAL:HG12	1.94	0.49
1:B:172:PRO:O	1:B:176:ARG:HB2	2.12	0.49
1:C:1026:THR:HG23	1:C:1031:HIS:O	2.13	0.49
1:B:135:LEU:HD13	1:B:139:ALA:HB1	1.93	0.49
1:B:202:ALA:O	1:B:206:TRP:HB2	2.13	0.49
1:C:1008:ARG:NH1	1:C:1013:LEU:HD13	2.27	0.49
1:C:92:PHE:CE2	1:C:99:LYS:HA	2.48	0.49
1:D:1091:LEU:O	1:D:1096:ARG:NE	2.46	0.49
1:D:108:SER:CB	1:D:157:ASN:HD21	2.26	0.49
1:B:227:GLU:HB3	1:B:230:ILE:CG2	2.42	0.49
1:D:107:LEU:HD23	1:D:107:LEU:O	2.13	0.49
1:D:1111:VAL:HA	1:D:1114:PHE:CD2	2.47	0.49

Continued on next page...

Continued from previous page...

Atom-1	Atom-2	Interatomic distance (Å)	Clash overlap (Å)
1:D:158:LEU:HD21	1:D:495:ILE:CG2	2.42	0.49
1:A:172:PRO:HD2	1:A:1064:GLU:HB2	1.95	0.49
1:A:176:ARG:O	1:A:179:ARG:HG2	2.12	0.48
1:A:548:LYS:O	1:A:551:ARG:HB2	2.13	0.48
1:B:1098:ALA:O	1:B:1101:ASN:HB3	2.12	0.48
1:A:207:GLN:NE2	1:A:208:TYR:CE2	2.81	0.48
1:B:1011:GLU:HG2	1:B:1030:GLY:N	2.28	0.48
1:B:147:ASP:OD2	2:B:2000:OHK:H21	2.12	0.48
1:D:1030:GLY:HA3	1:D:1104:PHE:HZ	1.78	0.48
1:A:1016:LYS:HG2	1:A:1057:VAL:HG13	1.95	0.48
1:B:1071:VAL:O	1:B:1075:VAL:HG23	2.13	0.48
1:D:236:ILE:HA	1:D:240:TYR:CD2	2.48	0.48
1:B:1007:LEU:HD21	1:B:1101:ASN:HA	1.93	0.48
1:C:506:TYR:O	1:C:509:MET:HB3	2.13	0.48
1:C:84:GLY:O	1:C:88:VAL:HG23	2.14	0.48
1:D:202:ALA:O	1:D:206:TRP:HB2	2.12	0.48
1:A:1013:LEU:C	1:A:1013:LEU:HD23	2.34	0.48
1:A:83:ILE:HG13	1:A:84:GLY:N	2.28	0.48
1:B:173:LEU:HD21	1:B:1013:LEU:HD11	1.96	0.48
1:B:520:ILE:HA	1:B:521:PRO:HD3	1.66	0.48
1:D:532:CYS:CB	2:D:2000:OHK:H9	2.43	0.48
1:C:538:VAL:HG12	1:C:542:CYS:SG	2.53	0.48
1:D:148:TYR:CD2	2:D:2000:OHK:C42	2.94	0.48
1:D:102:ASN:HB3	1:D:165:ARG:HH22	1.78	0.48
1:C:118:VAL:HG13	1:C:119:ILE:HG13	1.95	0.48
1:B:509:MET:HE1	1:B:525:TRP:HA	1.96	0.48
1:C:1099:LEU:O	1:C:1103:VAL:HG23	2.14	0.48
1:D:1006:MET:CE	1:D:1101:ASN:HD22	2.26	0.48
1:B:1008:ARG:NH2	1:C:1126:TRP:HB2	2.28	0.48
1:A:206:TRP:HD1	1:A:223:GLN:CG	2.27	0.47
1:C:239:PHE:CZ	1:C:504:THR:HG22	2.49	0.47
1:A:141:ASP:HB3	1:A:204:LEU:HD23	1.96	0.47
1:A:165:ARG:O	1:A:168:SER:HB2	2.13	0.47
1:A:500:ILE:CG2	1:A:501:ILE:N	2.77	0.47
1:C:167:PHE:CZ	1:D:227:GLU:HG3	2.49	0.47
1:A:155:VAL:HG23	1:A:156:MET:N	2.29	0.47
1:B:258:GLU:HG3	1:B:259:LYS:N	2.28	0.47
1:D:539:ASN:CB	1:D:540:PRO:HD3	2.44	0.47
1:D:540:PRO:O	1:D:543:TYR:HB2	2.14	0.47
1:B:1006:MET:CE	1:B:1101:ASN:HD22	2.28	0.47
1:D:1020:ASP:OD1	1:D:1022:GLU:HG3	2.14	0.47

Continued on next page...

Continued from previous page...

Atom-1	Atom-2	Interatomic distance (Å)	Clash overlap (Å)
1:D:182:LYS:O	1:D:186:VAL:HG23	2.15	0.47
1:D:149:VAL:CG2	1:D:196:PHE:HA	2.44	0.47
1:B:141:ASP:HB3	1:B:204:LEU:HD23	1.95	0.47
1:B:176:ARG:O	1:B:179:ARG:HG2	2.15	0.47
1:A:1104:PHE:CD2	1:A:1104:PHE:O	2.68	0.47
1:A:240:TYR:CZ	1:A:507:ASN:HB3	2.50	0.47
1:B:239:PHE:O	1:B:242:PRO:HD2	2.14	0.47
1:C:258:GLU:HG3	1:C:259:LYS:H	1.80	0.47
1:D:1091:LEU:HD22	1:D:1095:ARG:HB3	1.95	0.47
1:A:239:PHE:C	1:A:242:PRO:HD2	2.35	0.47
1:A:500:ILE:HG23	1:A:501:ILE:N	2.28	0.47
1:D:257:THR:HG22	1:D:257:THR:O	2.14	0.47
1:A:137:ASN:O	1:A:140:CYS:HB3	2.14	0.47
1:A:207:GLN:HG3	1:A:208:TYR:CD2	2.50	0.47
1:B:229:THR:O	1:B:232:PHE:HB3	2.15	0.47
1:C:155:VAL:HG23	1:C:156:MET:N	2.29	0.47
1:C:235:ALA:HB1	1:C:240:TYR:HE2	1.79	0.47
1:D:1144:ASN:O	1:D:1147:LYS:HB2	2.15	0.47
1:B:1062:GLU:HA	1:B:1065:LYS:HD2	1.97	0.47
1:D:109:LEU:CD1	1:D:157:ASN:HD22	2.27	0.47
1:A:1150:ILE:O	1:A:1153:PHE:HB2	2.15	0.47
1:B:108:SER:HB2	1:B:188:ILE:HD13	1.97	0.47
1:B:236:ILE:HA	1:B:240:TYR:HD2	1.80	0.47
1:C:1020:ASP:OD1	1:C:1021:THR:N	2.43	0.47
1:C:207:GLN:HG3	1:C:208:TYR:CD2	2.49	0.47
1:B:1126:TRP:HB3	1:B:1154:ARG:HA	1.97	0.47
1:A:101:VAL:HB	1:A:179:ARG:HH21	1.80	0.46
1:C:1005:GLU:O	1:C:1009:ILE:HG13	2.15	0.46
1:D:164:ASP:OD2	1:D:179:ARG:NH1	2.47	0.46
1:A:1088:TYR:OH	1:A:1100:ILE:HD11	2.15	0.46
1:A:168:SER:HA	1:A:176:ARG:HG3	1.96	0.46
1:B:1121:LEU:HD23	1:B:1126:TRP:HE3	1.80	0.46
1:A:1016:LYS:HG2	1:A:1057:VAL:HG22	1.98	0.46
1:A:240:TYR:O	1:A:244:THR:HG23	2.15	0.46
1:B:152:ASN:CB	2:B:2000:0HK:H6	2.45	0.46
1:B:121:MET:HE3	1:B:530:TRP:HZ3	1.81	0.46
1:C:530:TRP:CZ3	1:C:533:TYR:HD2	2.33	0.46
1:D:100:THR:HB	1:D:102:ASN:HD22	1.80	0.46
1:A:137:ASN:HB3	1:A:213:ARG:NH2	2.31	0.46
1:C:152:ASN:CA	2:C:2000:0HK:H6	2.46	0.46
1:C:199:TRP:CZ2	2:C:2000:0HK:H5	2.50	0.46

Continued on next page...

Continued from previous page...

Atom-1	Atom-2	Interatomic distance (Å)	Clash overlap (Å)
1:D:1046:LEU:HG	1:D:1054:THR:HG21	1.97	0.46
1:D:108:SER:O	1:D:111:CYS:HB2	2.15	0.46
1:C:1011:GLU:HG2	1:C:1030:GLY:N	2.31	0.46
1:C:531:LEU:O	1:C:534:ILE:HG12	2.15	0.46
1:B:539:ASN:HB2	1:B:540:PRO:HD3	1.97	0.46
1:C:1125:ARG:NH2	1:C:1128:GLU:OE1	2.47	0.46
1:C:115:ILE:HA	1:C:118:VAL:HG12	1.98	0.46
1:C:92:PHE:CD1	1:C:107:LEU:HD12	2.50	0.46
1:A:106:LEU:HD22	1:A:543:TYR:CE1	2.51	0.46
1:A:152:ASN:HD22	1:A:195:SER:HA	1.81	0.46
1:A:1027:ILE:O	1:A:1031:HIS:HB3	2.16	0.46
1:B:84:GLY:O	1:B:88:VAL:HG23	2.16	0.46
1:C:491:THR:HG22	1:C:491:THR:O	2.15	0.46
1:D:155:VAL:HG23	1:D:156:MET:N	2.31	0.46
1:D:84:GLY:O	1:D:87:LEU:HB2	2.16	0.46
1:B:117:GLY:HA2	1:B:121:MET:HG3	1.97	0.46
1:C:515:PHE:N	1:C:515:PHE:CD2	2.84	0.46
1:C:73:LEU:O	1:C:76:PHE:HB3	2.16	0.46
1:D:1085:LYS:HB3	1:D:1086:PRO:HD3	1.97	0.46
1:A:206:TRP:CE2	1:A:224:PHE:HB3	2.51	0.45
1:A:532:CYS:HB2	2:A:2000:OHK:C1	2.47	0.45
1:C:135:LEU:HB3	1:C:139:ALA:CB	2.41	0.45
1:C:1119:ARG:HD3	3:C:2002:PO4:O4	2.16	0.45
1:D:1078:ILE:HG23	1:D:1084:LEU:HB3	1.98	0.45
1:A:484:LYS:CD	1:A:484:LYS:H	2.15	0.45
1:A:1017:ILE:HG12	1:A:1027:ILE:HD12	1.97	0.45
1:A:1116:ASN:HD21	3:A:2003:PO4:P	2.40	0.45
1:B:148:TYR:CZ	2:B:2000:OHK:O10	2.70	0.45
1:B:225:LEU:HD22	1:B:231:THR:HA	1.97	0.45
1:C:92:PHE:CZ	1:C:99:LYS:HA	2.52	0.45
1:A:1058:ILE:HD11	1:A:1063:ALA:HB2	1.97	0.45
1:C:1074:ALA:O	1:C:1078:ILE:HG13	2.16	0.45
1:C:145:SER:HA	1:C:203:ILE:HD12	1.98	0.45
1:C:530:TRP:O	1:C:533:TYR:HB2	2.16	0.45
1:D:236:ILE:HA	1:D:240:TYR:HD2	1.79	0.45
1:A:1088:TYR:CZ	1:A:1096:ARG:HD2	2.51	0.45
1:B:107:LEU:O	1:B:110:ALA:HB3	2.16	0.45
1:B:542:CYS:HA	1:B:545:LEU:HD12	1.98	0.45
1:C:234:THR:O	1:C:238:ALA:HB3	2.16	0.45
1:D:148:TYR:O	1:D:152:ASN:HB2	2.17	0.45
1:A:138:LEU:HD23	1:A:138:LEU:C	2.37	0.45

Continued on next page...

Continued from previous page...

Atom-1	Atom-2	Interatomic distance (Å)	Clash overlap (Å)
1:C:1007:LEU:O	1:C:1011:GLU:CB	2.65	0.45
1:C:496:LEU:O	1:C:500:ILE:HG22	2.17	0.45
1:D:491:THR:O	1:D:491:THR:HG23	2.16	0.45
1:C:1081:ASN:OD1	1:C:1084:LEU:HG	2.16	0.45
1:C:79:LEU:HD12	1:C:82:ILE:HD11	1.99	0.45
1:D:548:LYS:O	1:D:551:ARG:HB2	2.17	0.45
1:A:1103:VAL:HA	1:A:1111:VAL:HG21	1.98	0.45
1:A:170:THR:O	1:A:172:PRO:HD3	2.17	0.45
1:D:222:ILE:HB	1:D:225:LEU:HD12	1.99	0.45
1:B:1005:GLU:O	1:B:1009:ILE:HG13	2.17	0.44
1:C:1126:TRP:HB3	1:C:1154:ARG:HA	1.99	0.44
1:D:1074:ALA:O	1:D:1078:ILE:HG13	2.17	0.44
1:D:148:TYR:CZ	2:D:2000:OHK:H19	2.52	0.44
1:D:92:PHE:CE2	1:D:99:LYS:HA	2.52	0.44
1:A:85:ASN:OD1	1:A:540:PRO:HG3	2.17	0.44
1:C:1120:MET:HE3	1:C:1120:MET:HB2	1.85	0.44
1:C:503:TRP:CD1	1:C:532:CYS:HA	2.52	0.44
1:C:137:ASN:O	1:C:140:CYS:HB3	2.17	0.44
1:C:236:ILE:HA	1:C:240:TYR:CD2	2.52	0.44
1:D:1081:ASN:HB2	1:D:1108:GLU:CD	2.38	0.44
1:A:144:LEU:HD13	1:A:222:ILE:HG12	1.98	0.44
1:A:530:TRP:O	1:A:533:TYR:HB2	2.16	0.44
1:B:100:THR:O	1:B:104:TYR:HB2	2.18	0.44
1:B:137:ASN:HB2	1:B:213:ARG:NH2	2.32	0.44
1:B:540:PRO:HA	1:B:543:TYR:CD2	2.52	0.44
1:D:1027:ILE:O	1:D:1031:HIS:HB3	2.18	0.44
1:D:92:PHE:CD1	1:D:107:LEU:HD12	2.53	0.44
1:D:91:ALA:O	1:D:98:LEU:HD12	2.17	0.44
1:B:251:TRP:CE3	1:B:251:TRP:HA	2.52	0.44
1:B:257:THR:O	1:B:257:THR:HG22	2.17	0.44
1:C:114:LEU:HD23	1:C:114:LEU:C	2.38	0.44
1:C:101:VAL:CG1	1:C:179:ARG:HH21	2.30	0.44
1:D:1004:PHE:HA	1:D:1067:PHE:CZ	2.53	0.44
1:D:1148:ARG:HB3	1:D:1161:TYR:CZ	2.53	0.44
1:A:123:LEU:HD12	1:A:123:LEU:N	2.33	0.44
1:A:258:GLU:OE1	1:A:1097:ALA:HB2	2.17	0.44
1:B:1014:ARG:HD3	1:B:1018:TYR:CG	2.53	0.44
1:B:1127:ASP:O	1:B:1131:VAL:HG23	2.16	0.44
1:B:133:TRP:CE2	1:B:140:CYS:HB2	2.53	0.44
1:B:73:LEU:O	1:B:76:PHE:HB3	2.18	0.44
1:A:100:THR:HG21	1:A:102:ASN:HD21	1.82	0.44

Continued on next page...

Continued from previous page...

Atom-1	Atom-2	Interatomic distance (Å)	Clash overlap (Å)
1:A:1086:PRO:O	1:A:1089:ASP:HB2	2.17	0.44
1:C:190:LEU:O	1:C:194:ILE:HG13	2.18	0.44
1:D:1067:PHE:O	1:D:1070:ASP:HB2	2.18	0.44
1:D:232:PHE:HE1	1:D:511:LEU:HD13	1.80	0.44
1:A:200:ALA:HB3	1:A:201:PRO:HD3	2.00	0.44
1:D:1087:VAL:HG21	1:D:1118:LEU:HB3	2.00	0.44
1:A:79:LEU:HA	1:A:82:ILE:HD11	2.00	0.44
1:B:159:LEU:CD2	1:B:246:MET:HG3	2.44	0.44
1:D:123:LEU:HD22	1:D:143:TRP:CD1	2.53	0.44
1:D:163:PHE:HD2	1:D:167:PHE:CZ	2.36	0.44
1:A:101:VAL:O	1:A:104:TYR:HB3	2.17	0.43
1:A:1043:LYS:HE2	1:A:1043:LYS:HB3	1.84	0.43
1:A:538:VAL:HG12	1:A:542:CYS:SG	2.58	0.43
1:B:541:VAL:O	1:B:545:LEU:HG	2.18	0.43
1:D:1094:VAL:HG12	1:D:1152:THR:HG23	2.00	0.43
1:A:1088:TYR:CE1	1:A:1096:ARG:CG	3.01	0.43
1:C:1061:ASP:O	1:C:1065:LYS:HG3	2.18	0.43
1:D:547:ASN:HB2	1:D:550:PHE:HD2	1.83	0.43
1:C:1027:ILE:HG12	1:C:1028:GLY:N	2.33	0.43
1:C:172:PRO:HD2	1:C:1064:GLU:OE2	2.18	0.43
1:A:1116:ASN:ND2	3:A:2003:PO4:O2	2.52	0.43
1:A:548:LYS:HA	1:A:551:ARG:CD	2.48	0.43
1:B:1061:ASP:O	1:B:1065:LYS:HG3	2.18	0.43
1:B:1102:MET:HE2	1:B:1111:VAL:HG13	2.00	0.43
1:B:515:PHE:CD1	1:B:515:PHE:N	2.87	0.43
1:B:1120:MET:HE3	1:B:1129:ALA:HA	2.01	0.43
1:D:250:TYR:HE1	1:D:493:SER:HG	1.66	0.43
1:A:1048:LYS:NZ	1:A:1048:LYS:HB2	2.34	0.43
1:A:491:THR:O	1:A:495:ILE:HG12	2.19	0.43
1:B:121:MET:HE3	1:B:530:TRP:CZ3	2.54	0.43
1:B:207:GLN:HG3	1:B:208:TYR:CD2	2.53	0.43
1:B:492:LEU:O	1:B:493:SER:C	2.57	0.43
1:C:100:THR:O	1:C:104:TYR:HB2	2.19	0.43
1:D:532:CYS:HB2	2:D:2000:OHK:H9	2.00	0.43
1:A:235:ALA:O	1:A:239:PHE:N	2.51	0.43
1:D:70:ILE:O	1:D:74:THR:HG23	2.18	0.43
1:A:1104:PHE:C	1:A:1104:PHE:CD2	2.92	0.43
1:A:1111:VAL:HG12	1:A:1111:VAL:O	2.18	0.43
1:B:133:TRP:CD1	1:B:136:GLY:O	2.70	0.43
1:C:1013:LEU:HD23	1:C:1013:LEU:C	2.39	0.43
1:C:1014:ARG:HD2	1:C:1018:TYR:HB3	2.01	0.43

Continued on next page...

Continued from previous page...

Atom-1	Atom-2	Interatomic distance (Å)	Clash overlap (Å)
1:C:1118:LEU:O	1:C:1121:LEU:HB2	2.19	0.43
1:D:117:GLY:HA2	1:D:121:MET:SD	2.59	0.43
1:A:1013:LEU:O	1:A:1014:ARG:HG2	2.19	0.43
1:A:1052:ARG:HG2	1:A:1053:ASN:H	1.83	0.43
1:A:108:SER:O	1:A:111:CYS:HB2	2.19	0.43
1:D:1015:LEU:HD22	1:D:1058:ILE:HG13	2.01	0.43
1:D:1091:LEU:HD12	1:D:1099:LEU:HD22	2.00	0.43
1:C:200:ALA:HB3	1:C:201:PRO:HD3	2.01	0.42
1:D:206:TRP:CD1	1:D:223:GLN:HB3	2.52	0.42
1:C:1114:PHE:HE1	1:C:1136:SER:CB	2.32	0.42
1:C:1139:TYR:CD1	1:C:1146:ALA:HB1	2.54	0.42
1:D:1093:ALA:HA	1:D:1096:ARG:HD2	2.01	0.42
1:D:155:VAL:CG2	1:D:156:MET:N	2.82	0.42
1:A:173:LEU:O	1:A:177:ALA:HB3	2.20	0.42
1:B:107:LEU:HD23	1:B:107:LEU:C	2.39	0.42
1:C:1005:GLU:OE2	1:C:483:ILE:HG23	2.19	0.42
1:C:156:MET:O	1:C:159:LEU:HB2	2.18	0.42
1:C:79:LEU:HA	1:C:82:ILE:HD11	2.02	0.42
1:A:1072:ASP:O	1:A:1076:ARG:HD3	2.20	0.42
1:D:1060:LYS:O	1:D:1063:ALA:HB3	2.18	0.42
1:D:83:ILE:HG13	1:D:84:GLY:N	2.35	0.42
1:A:1158:TRP:CE3	1:A:483:ILE:HD12	2.55	0.42
1:B:1105:GLN:HE22	1:B:1142:THR:HG21	1.85	0.42
1:D:1081:ASN:HB2	1:D:1108:GLU:OE1	2.19	0.42
1:D:1088:TYR:HD1	1:D:1099:LEU:HD23	1.83	0.42
1:D:255:LYS:HD3	1:D:255:LYS:HA	1.67	0.42
1:B:215:VAL:HG22	1:B:221:PHE:CE1	2.55	0.42
1:D:109:LEU:HD11	1:D:157:ASN:HB3	2.01	0.42
1:A:1094:VAL:HG12	1:A:1152:THR:HG23	2.00	0.42
1:A:124:PHE:O	1:A:128:ILE:HG13	2.19	0.42
1:A:207:GLN:HE21	1:A:208:TYR:HE2	1.67	0.42
1:B:1096:ARG:O	1:B:1100:ILE:HG13	2.20	0.42
1:B:152:ASN:O	1:B:155:VAL:HG22	2.19	0.42
1:B:225:LEU:HD23	1:B:225:LEU:HA	1.83	0.42
1:B:116:ILE:HD11	1:B:533:TYR:CD1	2.54	0.42
1:C:1121:LEU:HA	1:C:1121:LEU:HD23	1.94	0.42
1:D:1013:LEU:HD12	1:D:1029:ILE:HD11	2.02	0.42
1:D:133:TRP:NE1	1:D:140:CYS:HB2	2.35	0.42
1:B:172:PRO:HA	1:B:176:ARG:HB2	2.01	0.42
1:C:227:GLU:CD	1:C:228:PRO:HD2	2.40	0.42
1:C:243:VAL:HG22	1:C:499:PHE:HE1	1.84	0.42

Continued on next page...

Continued from previous page...

Atom-1	Atom-2	Interatomic distance (Å)	Clash overlap (Å)
1:C:509:MET:HE1	1:C:525:TRP:HA	2.02	0.42
1:D:1004:PHE:HD1	1:D:1067:PHE:CE2	2.37	0.42
1:A:1114:PHE:O	1:A:1117:SER:N	2.51	0.42
1:A:130:MET:O	1:A:131:ASN:HB2	2.20	0.42
1:B:1061:ASP:O	1:B:1064:GLU:HG2	2.20	0.42
1:B:506:TYR:O	1:B:509:MET:HB3	2.19	0.42
1:D:1081:ASN:OD1	1:D:1083:LYS:N	2.52	0.42
1:D:83:ILE:O	1:D:86:ILE:HG22	2.19	0.42
1:A:541:VAL:O	1:A:545:LEU:HG	2.20	0.41
1:C:159:LEU:HD23	1:C:246:MET:CG	2.50	0.41
1:A:113:ASP:CA	1:A:116:ILE:HG22	2.50	0.41
1:A:106:LEU:HB3	1:A:543:TYR:CZ	2.55	0.41
1:B:1155:THR:O	1:B:1157:THR:HG23	2.20	0.41
1:B:130:MET:C	1:B:132:ARG:H	2.23	0.41
1:B:157:ASN:O	1:B:161:ILE:HG13	2.20	0.41
1:D:152:ASN:HB2	2:D:2000:OHK:H6	2.02	0.41
1:A:1006:MET:CE	1:A:1098:ALA:HA	2.50	0.41
1:B:63:THR:O	1:B:67:VAL:HG23	2.20	0.41
1:C:530:TRP:CE3	1:C:533:TYR:HD2	2.38	0.41
1:D:135:LEU:HD23	1:D:135:LEU:HA	1.90	0.41
1:B:1120:MET:HE2	1:B:1120:MET:HB2	1.91	0.41
1:B:91:ALA:HA	1:B:94:VAL:HG12	2.03	0.41
1:C:113:ASP:HA	1:C:116:ILE:HG22	2.01	0.41
1:C:130:MET:C	1:C:132:ARG:N	2.72	0.41
1:D:178:LYS:HE2	1:D:1060:LYS:NZ	2.36	0.41
1:D:490:GLN:O	1:D:491:THR:CG2	2.55	0.41
1:B:145:SER:HA	1:B:203:ILE:HD12	2.03	0.41
1:B:239:PHE:C	1:B:242:PRO:HD2	2.41	0.41
1:C:1118:LEU:HD23	1:C:1121:LEU:HD12	2.02	0.41
1:D:1101:ASN:C	1:D:1101:ASN:OD1	2.59	0.41
1:D:504:THR:O	1:D:505:PRO:C	2.57	0.41
1:D:73:LEU:O	1:D:76:PHE:HB3	2.20	0.41
1:A:111:CYS:O	1:A:115:ILE:HG22	2.21	0.41
1:A:228:PRO:HB2	1:A:514:THR:HA	2.01	0.41
1:B:117:GLY:HA2	1:B:121:MET:CG	2.51	0.41
1:B:527:LEU:O	1:B:531:LEU:HG	2.20	0.41
1:B:1014:ARG:CZ	1:C:1157:THR:HG21	2.51	0.41
1:C:173:LEU:HD21	1:C:1013:LEU:HD11	2.02	0.41
1:C:214:THR:HB	1:C:223:GLN:HG3	2.02	0.41
1:C:232:PHE:HB2	1:C:514:THR:OG1	2.21	0.41
1:A:101:VAL:HB	1:A:179:ARG:NH2	2.35	0.41

Continued on next page...

Continued from previous page...

Atom-1	Atom-2	Interatomic distance (Å)	Clash overlap (Å)
1:A:1070:ASP:HB3	1:A:1104:PHE:CE1	2.55	0.41
1:A:1081:ASN:HD22	1:A:1108:GLU:CG	2.33	0.41
1:C:1006:MET:CE	1:C:1101:ASN:HD22	2.34	0.41
1:C:232:PHE:O	1:C:235:ALA:HB3	2.20	0.41
1:C:233:GLY:O	1:C:236:ILE:HB	2.21	0.41
1:C:239:PHE:HE2	1:C:504:THR:HG22	1.86	0.41
1:D:234:THR:O	1:D:238:ALA:HB3	2.20	0.41
1:B:1106:MET:CE	1:B:1111:VAL:HG22	2.50	0.41
1:D:106:LEU:HD22	1:D:543:TYR:CE1	2.56	0.41
1:D:519:CYS:O	1:D:521:PRO:HD3	2.20	0.41
1:A:1058:ILE:HB	1:A:1062:GLU:OE1	2.21	0.41
1:A:133:TRP:NE1	1:A:136:GLY:O	2.53	0.41
2:A:2000:0HK:C34	2:A:2000:0HK:O11	2.68	0.41
1:B:1020:ASP:HB2	1:B:1024:TYR:O	2.21	0.41
1:D:176:ARG:O	1:D:179:ARG:HG2	2.20	0.41
1:D:499:PHE:HA	1:D:535:ASN:ND2	2.36	0.41
1:D:538:VAL:HG12	1:D:538:VAL:O	2.20	0.41
1:A:206:TRP:HD1	1:A:223:GLN:HB3	1.85	0.41
1:B:133:TRP:NE1	1:B:140:CYS:HB2	2.36	0.41
1:D:250:TYR:HE1	1:D:493:SER:OG	2.04	0.41
1:D:88:VAL:CG2	1:D:540:PRO:HB3	2.50	0.41
1:D:87:LEU:HB3	1:D:554:PHE:CE2	2.56	0.41
1:D:85:ASN:O	1:D:89:ILE:HG13	2.20	0.41
1:A:259:LYS:HA	1:A:1003:ILE:CD1	2.51	0.40
1:C:1101:ASN:O	1:C:1104:PHE:HB3	2.21	0.40
1:C:1155:THR:O	1:C:1157:THR:HG23	2.21	0.40
1:C:503:TRP:C	1:C:505:PRO:HD2	2.42	0.40
1:C:232:PHE:CE1	1:C:511:LEU:HD13	2.55	0.40
1:D:1043:LYS:O	1:D:1046:LEU:HB3	2.22	0.40
1:D:1150:ILE:O	1:D:1153:PHE:N	2.55	0.40
1:D:133:TRP:CE2	1:D:140:CYS:HB2	2.55	0.40
1:A:1071:VAL:O	1:A:1075:VAL:HG23	2.20	0.40
1:A:1075:VAL:HG22	1:A:1100:ILE:HD13	2.03	0.40
1:A:1010:ASP:OD2	1:A:1101:ASN:ND2	2.55	0.40
1:A:196:PHE:O	1:A:201:PRO:HD3	2.20	0.40
1:B:104:TYR:O	1:B:107:LEU:HB3	2.20	0.40
1:C:1129:ALA:O	1:C:1133:LEU:HG	2.22	0.40
1:D:145:SER:HA	1:D:203:ILE:HD12	2.03	0.40
1:A:120:SER:HA	1:A:143:TRP:NE1	2.21	0.40
1:B:255:LYS:HB2	1:B:255:LYS:HE2	1.90	0.40
1:D:1149:VAL:HG12	1:D:1153:PHE:CE2	2.57	0.40

Continued on next page...

Continued from previous page...

Atom-1	Atom-2	Interatomic distance (Å)	Clash overlap (Å)
1:D:83:ILE:O	1:D:86:ILE:CG2	2.70	0.40
1:A:158:LEU:HD21	1:A:495:ILE:HG21	2.04	0.40
2:A:2000:0HK:C9	2:A:2000:0HK:O11	2.69	0.40
1:A:258:GLU:HG2	1:A:1003:ILE:CG2	2.52	0.40
1:C:1102:MET:HE2	1:C:1111:VAL:HG13	2.04	0.40
1:D:1004:PHE:HA	1:D:1067:PHE:HZ	1.86	0.40
1:D:1008:ARG:HA	1:D:1008:ARG:HD2	1.94	0.40
1:A:135:LEU:HB3	1:A:139:ALA:CB	2.51	0.40
1:C:1060:LYS:CD	3:C:2001:PO4:O2	2.67	0.40
1:D:1016:LYS:HA	1:D:1056:GLY:O	2.20	0.40
1:D:130:MET:O	1:D:131:ASN:HB2	2.21	0.40
1:D:1158:TRP:CE3	1:D:483:ILE:HD12	2.57	0.40
1:D:504:THR:O	1:D:508:ILE:HG13	2.22	0.40
1:D:506:TYR:O	1:D:509:MET:HB3	2.21	0.40

There are no symmetry-related clashes.

5.3 Torsion angles [i](#)

5.3.1 Protein backbone [i](#)

In the following table, the Percentiles column shows the percent Ramachandran outliers of the chain as a percentile score with respect to all X-ray entries followed by that with respect to entries of similar resolution.

The Analysed column shows the number of residues for which the backbone conformation was analysed, and the total number of residues.

Mol	Chain	Analysed	Favoured	Allowed	Outliers	Percentiles
1	A	425/479 (89%)	391 (92%)	33 (8%)	1 (0%)	49 82
1	B	426/479 (89%)	396 (93%)	30 (7%)	0	100 100
1	C	426/479 (89%)	389 (91%)	37 (9%)	0	100 100
1	D	428/479 (89%)	392 (92%)	36 (8%)	0	100 100
All	All	1705/1916 (89%)	1568 (92%)	136 (8%)	1 (0%)	53 85

All (1) Ramachandran outliers are listed below:

Mol	Chain	Res	Type
1	A	1094	VAL

5.3.2 Protein sidechains [i](#)

In the following table, the Percentiles column shows the percent sidechain outliers of the chain as a percentile score with respect to all X-ray entries followed by that with respect to entries of similar resolution.

The Analysed column shows the number of residues for which the sidechain conformation was analysed, and the total number of residues.

Mol	Chain	Analysed	Rotameric	Outliers	Percentiles	
1	A	360/416 (86%)	347 (96%)	13 (4%)	38	71
1	B	343/416 (82%)	334 (97%)	9 (3%)	49	78
1	C	336/416 (81%)	329 (98%)	7 (2%)	56	82
1	D	351/416 (84%)	336 (96%)	15 (4%)	32	67
All	All	1390/1664 (84%)	1346 (97%)	44 (3%)	42	74

All (44) residues with a non-rotameric sidechain are listed below:

Mol	Chain	Res	Type
1	A	102	ASN
1	A	157	ASN
1	A	230	ILE
1	A	256	GLU
1	A	1003	ILE
1	A	1066	LEU
1	A	1127	ASP
1	A	1132	ASN
1	A	1140	ASN
1	A	484	LYS
1	A	490	GLN
1	A	517	ASP
1	A	529	TYR
1	B	173	LEU
1	B	1035	LYS
1	B	1114	PHE
1	B	484	LYS
1	B	490	GLN
1	B	504	THR
1	B	517	ASP
1	B	519	CYS
1	B	529	TYR
1	C	164	ASP
1	C	1013	LEU

Continued on next page...

Continued from previous page...

Mol	Chain	Res	Type
1	C	1140	ASN
1	C	490	GLN
1	C	500	ILE
1	C	517	ASP
1	C	529	TYR
1	D	100	THR
1	D	102	ASN
1	D	157	ASN
1	D	169	ILE
1	D	1003	ILE
1	D	1055	ASN
1	D	1132	ASN
1	D	484	LYS
1	D	492	LEU
1	D	497	LEU
1	D	500	ILE
1	D	517	ASP
1	D	519	CYS
1	D	523	THR
1	D	529	TYR

Some sidechains can be flipped to improve hydrogen bonding and reduce clashes. All (37) such sidechains are listed below:

Mol	Chain	Res	Type
1	A	66	GLN
1	A	97	GLN
1	A	102	ASN
1	A	137	ASN
1	A	152	ASN
1	A	157	ASN
1	A	1002	ASN
1	A	1069	GLN
1	A	1140	ASN
1	A	490	GLN
1	A	535	ASN
1	A	539	ASN
1	B	66	GLN
1	B	1069	GLN
1	B	1132	ASN
1	B	1141	GLN
1	B	513	ASN
1	B	526	ASN

Continued on next page...

Continued from previous page...

Mol	Chain	Res	Type
1	B	535	ASN
1	B	547	ASN
1	C	102	ASN
1	C	157	ASN
1	C	1132	ASN
1	C	1141	GLN
1	C	490	GLN
1	C	513	ASN
1	C	535	ASN
1	D	97	GLN
1	D	102	ASN
1	D	157	ASN
1	D	1055	ASN
1	D	1069	GLN
1	D	1101	ASN
1	D	1141	GLN
1	D	490	GLN
1	D	526	ASN
1	D	535	ASN

5.3.3 RNA [i](#)

There are no RNA molecules in this entry.

5.4 Non-standard residues in protein, DNA, RNA chains [i](#)

There are no non-standard protein/DNA/RNA residues in this entry.

5.5 Carbohydrates [i](#)

There are no carbohydrates in this entry.

5.6 Ligand geometry [i](#)

14 ligands are modelled in this entry.

In the following table, the Counts columns list the number of bonds (or angles) for which Mogul statistics could be retrieved, the number of bonds (or angles) that are observed in the model and the number of bonds (or angles) that are defined in the Chemical Component Dictionary. The Link column lists molecule types, if any, to which the group is linked. The Z score for a bond length (or angle) is the number of standard deviations the observed value is removed from the

expected value. A bond length (or angle) with $|Z| > 2$ is considered an outlier worth inspection. RMSZ is the root-mean-square of all Z scores of the bond lengths (or angles).

Mol	Type	Chain	Res	Link	Bond lengths			Bond angles		
					Counts	RMSZ	# $ Z > 2$	Counts	RMSZ	# $ Z > 2$
2	OHK	A	2000	-	28,30,30	1.77	8 (28%)	36,48,48	4.23	17 (47%)
3	PO4	A	2001	-	4,4,4	0.77	0	6,6,6	0.38	0
3	PO4	A	2002	-	4,4,4	0.77	0	6,6,6	0.37	0
3	PO4	A	2003	-	4,4,4	0.76	0	6,6,6	0.40	0
3	PO4	A	2004	-	4,4,4	0.73	0	6,6,6	0.41	0
2	OHK	B	2000	-	28,30,30	1.75	9 (32%)	36,48,48	4.36	19 (52%)
3	PO4	B	2001	-	4,4,4	0.82	0	6,6,6	0.41	0
2	OHK	C	2000	-	28,30,30	1.74	8 (28%)	36,48,48	4.58	17 (47%)
3	PO4	C	2001	-	4,4,4	0.87	0	6,6,6	0.24	0
3	PO4	C	2002	-	4,4,4	0.76	0	6,6,6	0.35	0
2	OHK	D	2000	-	28,30,30	1.70	7 (25%)	36,48,48	4.51	15 (41%)
3	PO4	D	2001	-	4,4,4	0.72	0	6,6,6	0.40	0
3	PO4	D	2002	-	4,4,4	0.76	0	6,6,6	0.38	0
3	PO4	D	2003	-	4,4,4	0.73	0	6,6,6	0.41	0

In the following table, the Chirals column lists the number of chiral outliers, the number of chiral centers analysed, the number of these observed in the model and the number defined in the Chemical Component Dictionary. Similar counts are reported in the Torsion and Rings columns. '–' means no outliers of that kind were identified.

Mol	Type	Chain	Res	Link	Chirals	Torsions	Rings
2	OHK	A	2000	-	-	0/10/55/55	0/5/5/5
3	PO4	A	2001	-	-	0/0/0/0	0/0/0/0
3	PO4	A	2002	-	-	0/0/0/0	0/0/0/0
3	PO4	A	2003	-	-	0/0/0/0	0/0/0/0
3	PO4	A	2004	-	-	0/0/0/0	0/0/0/0
2	OHK	B	2000	-	-	0/10/55/55	0/5/5/5
3	PO4	B	2001	-	-	0/0/0/0	0/0/0/0
2	OHK	C	2000	-	-	0/10/55/55	0/5/5/5
3	PO4	C	2001	-	-	0/0/0/0	0/0/0/0
3	PO4	C	2002	-	-	0/0/0/0	0/0/0/0
2	OHK	D	2000	-	-	0/10/55/55	0/5/5/5
3	PO4	D	2001	-	-	0/0/0/0	0/0/0/0
3	PO4	D	2002	-	-	0/0/0/0	0/0/0/0
3	PO4	D	2003	-	-	0/0/0/0	0/0/0/0

All (32) bond length outliers are listed below:

Mol	Chain	Res	Type	Atoms	Z	Observed(Å)	Ideal(Å)
2	A	2000	0HK	C1-N2	-4.43	1.42	1.51
2	D	2000	0HK	C1-N2	-4.06	1.43	1.51
2	B	2000	0HK	C1-N2	-3.65	1.44	1.51
2	C	2000	0HK	C1-N2	-3.63	1.44	1.51
2	B	2000	0HK	C12-N2	-2.95	1.45	1.51
2	D	2000	0HK	C12-N2	-2.85	1.45	1.51
2	A	2000	0HK	C12-N2	-2.80	1.45	1.51
2	C	2000	0HK	C12-N2	-2.66	1.46	1.51
2	C	2000	0HK	O11-C5	-2.60	1.40	1.46
2	A	2000	0HK	O33-C30	-2.55	1.38	1.43
2	D	2000	0HK	O11-C5	-2.37	1.40	1.46
2	B	2000	0HK	O33-C30	-2.33	1.38	1.43
2	C	2000	0HK	O33-C30	-2.25	1.38	1.43
2	B	2000	0HK	O10-C8	-2.24	1.40	1.44
2	C	2000	0HK	O10-C8	-2.23	1.40	1.44
2	B	2000	0HK	O11-C5	-2.22	1.40	1.46
2	D	2000	0HK	O33-C30	-2.09	1.39	1.43
2	A	2000	0HK	C30-C28	-2.04	1.51	1.54
2	A	2000	0HK	O11-C5	-2.02	1.41	1.46
2	B	2000	0HK	O10-C9	-2.01	1.41	1.44
2	C	2000	0HK	C31-S37	2.13	1.78	1.74
2	A	2000	0HK	C31-S37	2.20	1.78	1.74
2	D	2000	0HK	C31-S37	2.21	1.78	1.74
2	B	2000	0HK	C31-S37	2.35	1.78	1.74
2	D	2000	0HK	C32-S44	2.41	1.78	1.74
2	B	2000	0HK	C32-S44	2.45	1.78	1.74
2	A	2000	0HK	C32-S44	2.54	1.78	1.74
2	C	2000	0HK	C32-S44	2.71	1.79	1.74
2	C	2000	0HK	O11-C28	3.37	1.40	1.34
2	B	2000	0HK	O11-C28	3.63	1.41	1.34
2	D	2000	0HK	O11-C28	3.68	1.41	1.34
2	A	2000	0HK	O11-C28	3.89	1.41	1.34

All (68) bond angle outliers are listed below:

Mol	Chain	Res	Type	Atoms	Z	Observed(°)	Ideal(°)
2	B	2000	0HK	C35-C36-S37	-11.51	100.78	113.18
2	D	2000	0HK	C42-C43-S44	-11.39	100.91	113.18
2	C	2000	0HK	C42-C43-S44	-11.13	101.19	113.18
2	C	2000	0HK	C35-C36-S37	-10.78	101.57	113.18
2	A	2000	0HK	C42-C43-S44	-10.74	101.61	113.18
2	B	2000	0HK	C42-C43-S44	-10.60	101.76	113.18
2	A	2000	0HK	C35-C36-S37	-10.23	102.16	113.18

Continued on next page...

Continued from previous page...

Mol	Chain	Res	Type	Atoms	Z	Observed(°)	Ideal(°)
2	D	2000	0HK	C35-C36-S37	-10.23	102.16	113.18
2	A	2000	0HK	C7-C8-C9	-9.03	101.92	107.46
2	C	2000	0HK	C7-C8-C9	-8.47	102.27	107.46
2	D	2000	0HK	C7-C8-C9	-8.44	102.29	107.46
2	B	2000	0HK	C7-C8-C9	-8.05	102.53	107.46
2	C	2000	0HK	C3-C9-C8	-7.04	103.14	107.46
2	B	2000	0HK	C3-C9-C8	-6.86	103.25	107.46
2	D	2000	0HK	C3-C9-C8	-6.21	103.65	107.46
2	A	2000	0HK	C3-C9-C8	-5.79	103.91	107.46
2	B	2000	0HK	O11-C28-O29	-3.42	117.74	123.93
2	B	2000	0HK	C3-C4-C5	-3.26	109.55	113.72
2	D	2000	0HK	O11-C28-O29	-3.13	118.26	123.93
2	A	2000	0HK	C6-C7-C8	-3.01	104.56	107.04
2	C	2000	0HK	C3-C4-C5	-2.97	109.93	113.72
2	C	2000	0HK	O11-C28-O29	-2.92	118.63	123.93
2	A	2000	0HK	C7-C6-C5	-2.91	109.99	113.72
2	A	2000	0HK	C3-C4-C5	-2.88	110.04	113.72
2	C	2000	0HK	C7-C6-C5	-2.70	110.27	113.72
2	B	2000	0HK	C7-C6-C5	-2.61	110.39	113.72
2	D	2000	0HK	C3-C4-C5	-2.40	110.64	113.72
2	D	2000	0HK	C12-N2-C3	-2.38	109.67	113.03
2	D	2000	0HK	C6-C7-C8	-2.28	105.15	107.04
2	C	2000	0HK	O10-C9-C8	-2.20	57.83	59.61
2	B	2000	0HK	O10-C9-C8	-2.13	57.89	59.61
2	B	2000	0HK	C34-C35-C36	2.01	119.97	114.07
2	B	2000	0HK	C4-C5-C6	2.01	115.83	112.03
2	C	2000	0HK	C8-C7-N2	2.03	104.81	103.54
2	A	2000	0HK	O10-C9-C3	2.24	119.21	117.11
2	D	2000	0HK	O33-C30-C32	2.28	111.04	108.36
2	A	2000	0HK	O10-C8-C7	2.33	119.29	117.11
2	D	2000	0HK	C9-O10-C8	2.35	62.98	60.78
2	A	2000	0HK	C5-O11-C28	2.36	121.70	117.74
2	C	2000	0HK	O33-C30-C31	2.37	111.15	108.36
2	B	2000	0HK	C9-C3-N2	2.47	105.08	103.54
2	A	2000	0HK	O33-C30-C31	2.50	111.30	108.36
2	B	2000	0HK	O33-C30-C31	2.86	111.73	108.36
2	D	2000	0HK	O10-C8-C7	2.89	119.82	117.11
2	A	2000	0HK	O33-C30-C32	3.08	111.98	108.36
2	B	2000	0HK	C8-C7-N2	3.09	105.46	103.54
2	B	2000	0HK	O10-C9-C3	3.09	120.00	117.11
2	B	2000	0HK	C9-O10-C8	3.42	63.97	60.78
2	B	2000	0HK	O10-C8-C7	3.44	120.33	117.11

Continued on next page...

Continued from previous page...

Mol	Chain	Res	Type	Atoms	Z	Observed(°)	Ideal(°)
2	C	2000	0HK	C9-O10-C8	3.50	64.05	60.78
2	D	2000	0HK	O10-C9-C3	3.50	120.39	117.11
2	C	2000	0HK	O33-C30-C32	3.70	112.71	108.36
2	A	2000	0HK	C9-C3-N2	3.82	105.91	103.54
2	C	2000	0HK	O11-C28-C30	3.84	116.75	110.82
2	C	2000	0HK	O10-C8-C7	4.23	121.07	117.11
2	A	2000	0HK	O11-C28-C30	4.23	117.35	110.82
2	C	2000	0HK	O10-C9-C3	4.25	121.09	117.11
2	D	2000	0HK	O11-C28-C30	4.32	117.48	110.82
2	B	2000	0HK	O11-C28-C30	4.41	117.62	110.82
2	A	2000	0HK	C8-C7-N2	4.54	106.36	103.54
2	A	2000	0HK	C4-C3-N2	8.31	114.05	108.82
2	B	2000	0HK	C4-C3-N2	9.55	114.83	108.82
2	B	2000	0HK	C6-C7-N2	9.96	115.08	108.82
2	A	2000	0HK	C6-C7-N2	10.48	115.41	108.82
2	D	2000	0HK	C4-C3-N2	11.02	115.75	108.82
2	C	2000	0HK	C6-C7-N2	11.08	115.79	108.82
2	C	2000	0HK	C4-C3-N2	11.30	115.92	108.82
2	D	2000	0HK	C6-C7-N2	12.56	116.72	108.82

There are no chirality outliers.

There are no torsion outliers.

There are no ring outliers.

7 monomers are involved in 37 short contacts:

Mol	Chain	Res	Type	Clashes	Symm-Clashes
2	A	2000	0HK	7	0
3	A	2003	PO4	2	0
2	B	2000	0HK	7	0
2	C	2000	0HK	7	0
3	C	2001	PO4	2	0
3	C	2002	PO4	1	0
2	D	2000	0HK	11	0

5.7 Other polymers

There are no such residues in this entry.

5.8 Polymer linkage issues

There are no chain breaks in this entry.

6 Fit of model and data [i](#)

6.1 Protein, DNA and RNA chains [i](#)

In the following table, the column labelled ‘#RSRZ> 2’ contains the number (and percentage) of RSRZ outliers, followed by percent RSRZ outliers for the chain as percentile scores relative to all X-ray entries and entries of similar resolution. The OWAB column contains the minimum, median, 95th percentile and maximum values of the occupancy-weighted average B-factor per residue. The column labelled ‘Q< 0.9’ lists the number of (and percentage) of residues with an average occupancy less than 0.9.

Mol	Chain	Analysed	<RSRZ>	#RSRZ>2	OWAB(Å ²)	Q<0.9
1	A	429/479 (89%)	-0.36	0 100 100	42, 71, 115, 153	0
1	B	430/479 (89%)	-0.30	3 (0%) 87 86	41, 92, 136, 172	0
1	C	430/479 (89%)	-0.23	5 (1%) 79 76	51, 103, 154, 183	0
1	D	432/479 (90%)	-0.36	0 100 100	40, 77, 124, 207	0
All	All	1721/1916 (89%)	-0.31	8 (0%) 90 89	40, 85, 136, 207	0

All (8) RSRZ outliers are listed below:

Mol	Chain	Res	Type	RSRZ
1	B	1037	PRO	4.4
1	C	218	GLY	3.8
1	C	1033	LEU	3.4
1	C	530	TRP	2.9
1	C	518	SER	2.8
1	B	1015	LEU	2.7
1	C	217	PRO	2.6
1	B	1033	LEU	2.4

6.2 Non-standard residues in protein, DNA, RNA chains [i](#)

There are no non-standard protein/DNA/RNA residues in this entry.

6.3 Carbohydrates [i](#)

There are no carbohydrates in this entry.

6.4 Ligands [i](#)

In the following table, the Atoms column lists the number of modelled atoms in the group and the number defined in the chemical component dictionary. The B-factors column lists the minimum, median, 95th percentile and maximum values of B factors of atoms in the group. The column labelled 'Q< 0.9' lists the number of atoms with occupancy less than 0.9.

Mol	Type	Chain	Res	Atoms	RSCC	RSR	B-factors(\AA^2)	Q<0.9
3	PO4	C	2002	5/5	0.81	0.17	121,127,142,152	0
3	PO4	A	2001	5/5	0.85	0.17	102,117,134,135	0
3	PO4	D	2002	5/5	0.91	0.12	113,113,122,133	0
3	PO4	D	2001	5/5	0.92	0.16	116,120,134,140	0
3	PO4	A	2003	5/5	0.93	0.19	111,114,136,138	0
3	PO4	B	2001	5/5	0.94	0.25	102,123,125,143	0
3	PO4	A	2002	5/5	0.95	0.17	87,88,94,107	0
3	PO4	D	2003	5/5	0.95	0.17	61,80,87,88	0
3	PO4	C	2001	5/5	0.95	0.18	94,95,117,118	0
3	PO4	A	2004	5/5	0.96	0.24	106,108,116,127	0
2	0HK	D	2000	26/26	0.97	0.20	62,73,80,85	0
2	0HK	B	2000	26/26	0.98	0.20	56,66,74,77	0
2	0HK	A	2000	26/26	0.98	0.20	54,58,64,72	0
2	0HK	C	2000	26/26	0.98	0.23	68,78,84,90	0

6.5 Other polymers [i](#)

There are no such residues in this entry.