



# wwPDB X-ray Structure Validation Summary Report ⓘ

Nov 20, 2023 – 06:59 PM JST

PDB ID : 7DBD  
Title : 444 in complex with tubulin  
Authors : Wu, C.Y.; Wang, Y.X.  
Deposited on : 2020-10-19  
Resolution : 3.09 Å(reported)

This is a wwPDB X-ray Structure Validation Summary Report for a publicly released PDB entry.

We welcome your comments at [validation@mail.wwpdb.org](mailto:validation@mail.wwpdb.org)

A user guide is available at

<https://www.wwpdb.org/validation/2017/XrayValidationReportHelp>

with specific help available everywhere you see the ⓘ symbol.

The types of validation reports are described at

<http://www.wwpdb.org/validation/2017/FAQs#types>.

---

The following versions of software and data (see [references ⓘ](#)) were used in the production of this report:

MolProbity : 4.02b-467  
Mogul : 1.8.5 (274361), CSD as541be (2020)  
Xtriage (Phenix) : 1.13  
EDS : 2.36  
buster-report : 1.1.7 (2018)  
Percentile statistics : 20191225.v01 (using entries in the PDB archive December 25th 2019)  
Refmac : 5.8.0158  
CCP4 : 7.0.044 (Gargrove)  
Ideal geometry (proteins) : Engh & Huber (2001)  
Ideal geometry (DNA, RNA) : Parkinson et al. (1996)  
Validation Pipeline (wwPDB-VP) : 2.36

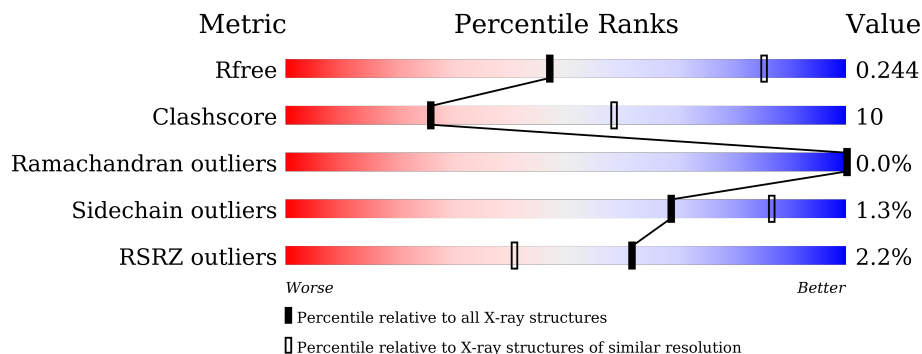
# 1 Overall quality at a glance

The following experimental techniques were used to determine the structure:

*X-RAY DIFFRACTION*

The reported resolution of this entry is 3.09 Å.

Percentile scores (ranging between 0-100) for global validation metrics of the entry are shown in the following graphic. The table shows the number of entries on which the scores are based.



Metric	Whole archive (#Entries)	Similar resolution (#Entries, resolution range(Å))
$R_{free}$	130704	1094 (3.10-3.10)
Clashscore	141614	1184 (3.10-3.10)
Ramachandran outliers	138981	1141 (3.10-3.10)
Sidechain outliers	138945	1141 (3.10-3.10)
RSRZ outliers	127900	1067 (3.10-3.10)

The table below summarises the geometric issues observed across the polymeric chains and their fit to the electron density. The red, orange, yellow and green segments of the lower bar indicate the fraction of residues that contain outliers for  $\geq 3$ , 2, 1 and 0 types of geometric quality criteria respectively. A grey segment represents the fraction of residues that are not modelled. The numeric value for each fraction is indicated below the corresponding segment, with a dot representing fractions  $\leq 5\%$ . The upper red bar (where present) indicates the fraction of residues that have poor fit to the electron density. The numeric value is given above the bar.

Mol	Chain	Length	Quality of chain
1	A	451	74% (green), 23% (yellow), 3% (grey), 2% (red)
1	C	451	76% (green), 22% (yellow), 2% (grey), 2% (red)
2	B	445	77% (green), 19% (yellow), 2% (grey), 2% (red)
2	D	445	66% (green), 28% (yellow), 6% (grey), 2% (red)
3	E	143	77% (green), 8% (yellow), 14% (grey), 3% (red)
4	F	384	67% (green), 19% (yellow), 12% (grey), 7% (red)

The following table lists non-polymeric compounds, carbohydrate monomers and non-standard residues in protein, DNA, RNA chains that are outliers for geometric or electron-density-fit criteria:

<b>Mol</b>	<b>Type</b>	<b>Chain</b>	<b>Res</b>	<b>Chirality</b>	<b>Geometry</b>	<b>Clashes</b>	<b>Electron density</b>
9	GDP	D	502	-	-	X	-

## 2 Entry composition i

There are 11 unique types of molecules in this entry. The entry contains 17563 atoms, of which 0 are hydrogens and 0 are deuteriums.

In the tables below, the ZeroOcc column contains the number of atoms modelled with zero occupancy, the AltConf column contains the number of residues with at least one atom in alternate conformation and the Trace column contains the number of residues modelled with at most 2 atoms.

- Molecule 1 is a protein called Tubulin alpha-1B chain.

Mol	Chain	Residues	Atoms					ZeroOcc	AltConf	Trace
			Total	C	N	O	S			
1	A	438	Total	C	N	O	S	0	2	0
			3430	2171	582	653	24			
1	C	441	Total	C	N	O	S	0	4	0
			3452	2182	586	662	22			

- Molecule 2 is a protein called Tubulin beta chain.

Mol	Chain	Residues	Atoms					ZeroOcc	AltConf	Trace
			Total	C	N	O	S			
2	B	429	Total	C	N	O	S	0	0	0
			3376	2119	578	652	27			
2	D	420	Total	C	N	O	S	0	0	0
			3285	2065	558	635	27			

- Molecule 3 is a protein called Stathmin-4.

Mol	Chain	Residues	Atoms					ZeroOcc	AltConf	Trace
			Total	C	N	O	S			
3	E	123	Total	C	N	O	S	0	2	0
			1026	633	186	202	5			

There are 2 discrepancies between the modelled and reference sequences:

Chain	Residue	Modelled	Actual	Comment	Reference
E	1	MET	-	initiating methionine	UNP P63042
E	2	ALA	-	expression tag	UNP P63042

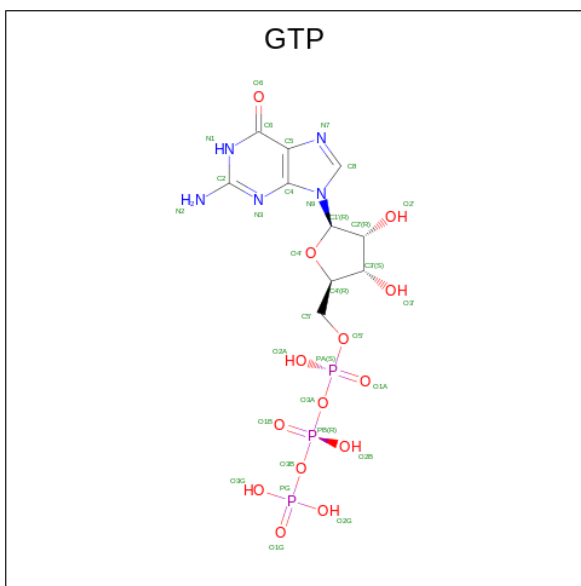
- Molecule 4 is a protein called Tubulin tyrosine ligase.

Mol	Chain	Residues	Atoms					ZeroOcc	AltConf	Trace
			Total	C	N	O	S			
4	F	339	Total	C	N	O	S	0	0	0
			2763	1774	472	503	14			

There are 6 discrepancies between the modelled and reference sequences:

Chain	Residue	Modelled	Actual	Comment	Reference
F	379	HIS	-	expression tag	UNP E1BQ43
F	380	HIS	-	expression tag	UNP E1BQ43
F	381	HIS	-	expression tag	UNP E1BQ43
F	382	HIS	-	expression tag	UNP E1BQ43
F	383	HIS	-	expression tag	UNP E1BQ43
F	384	HIS	-	expression tag	UNP E1BQ43

- Molecule 5 is GUANOSINE-5'-TRIPHOSPHATE (three-letter code: GTP) (formula:  $C_{10}H_{16}N_5O_{14}P_3$ ).



Mol	Chain	Residues	Atoms					ZeroOcc	AltConf
			Total	C	N	O	P		
5	A	1	Total	C	N	O	P	0	0
			32	10	5	14	3		
5	C	1	Total	C	N	O	P	0	0
			32	10	5	14	3		

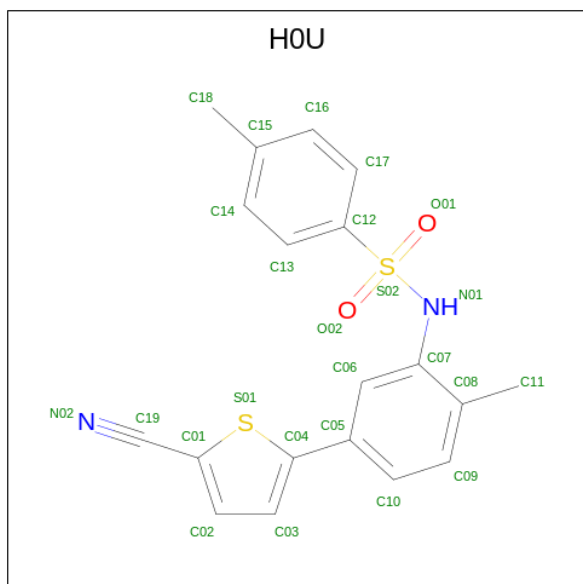
- Molecule 6 is MAGNESIUM ION (three-letter code: MG) (formula: Mg).

Mol	Chain	Residues	Atoms		ZeroOcc	AltConf
			Total	Mg		
6	A	1	Total	Mg	0	0
			1	1		
6	B	1	Total	Mg	0	0
			1	1		
6	C	1	Total	Mg	0	0
			1	1		
6	F	1	Total	Mg	0	0
			1	1		

- Molecule 7 is CALCIUM ION (three-letter code: CA) (formula: Ca).

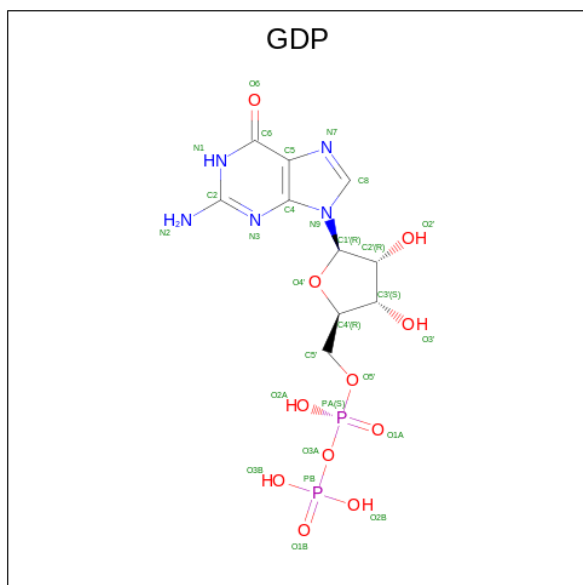
Mol	Chain	Residues	Atoms	ZeroOcc	AltConf
7	A	1	Total Ca 1 1	0	0
7	C	1	Total Ca 1 1	0	0

- Molecule 8 is {N}-[5-(5-cyanothiophen-2-yl)-2-methyl-phenyl]-4-methyl-benzenesulfonamide (three-letter code: H0U) (formula: C<sub>19</sub>H<sub>16</sub>N<sub>2</sub>O<sub>2</sub>S<sub>2</sub>) (labeled as "Ligand of Interest" by depositor).



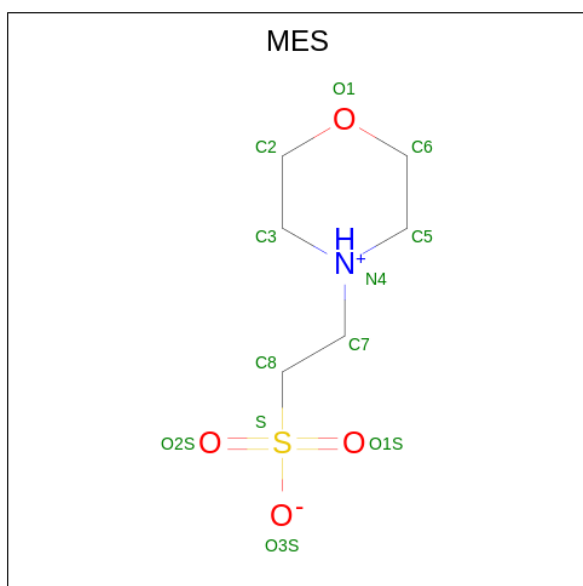
Mol	Chain	Residues	Atoms	ZeroOcc	AltConf
8	B	1	Total C N O S 25 19 2 2 2	0	0
8	D	1	Total C N O S 25 19 2 2 2	0	0

- Molecule 9 is GUANOSINE-5'-DIPHOSPHATE (three-letter code: GDP) (formula: C<sub>10</sub>H<sub>15</sub>N<sub>5</sub>O<sub>11</sub>P<sub>2</sub>).



Mol	Chain	Residues	Atoms					ZeroOcc	AltConf
			Total	C	N	O	P		
9	B	1	28	10	5	11	2	0	0
9	D	1	28	10	5	11	2	0	0

- Molecule 10 is 2-(N-MORPHOLINO)-ETHANESULFONIC ACID (three-letter code: MES) (formula: C<sub>6</sub>H<sub>13</sub>NO<sub>4</sub>S).



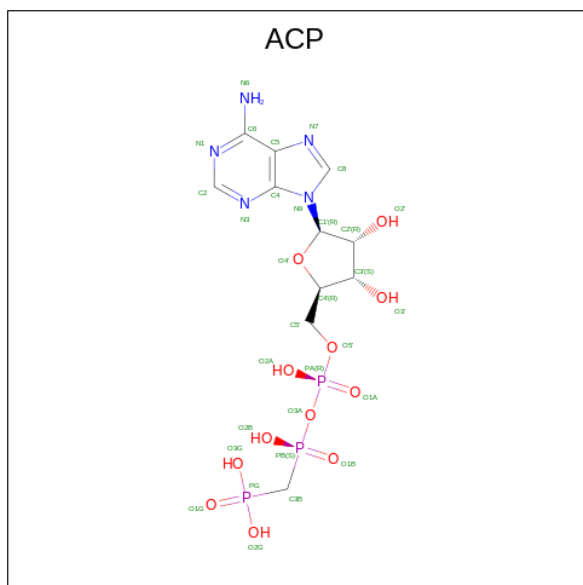
Mol	Chain	Residues	Atoms					ZeroOcc	AltConf
			Total	C	N	O	S		
10	B	1	12	6	1	4	1	0	0

*Continued on next page...*

Continued from previous page...

Mol	Chain	Residues	Atoms					ZeroOcc	AltConf
			Total	C	N	O	S		
10	B	1	12	6	1	4	1	0	0

- Molecule 11 is PHOSPHOMETHYLPHOSPHONIC ACID ADENYLATE ESTER (three-letter code: ACP) (formula: C<sub>11</sub>H<sub>18</sub>N<sub>5</sub>O<sub>12</sub>P<sub>3</sub>).



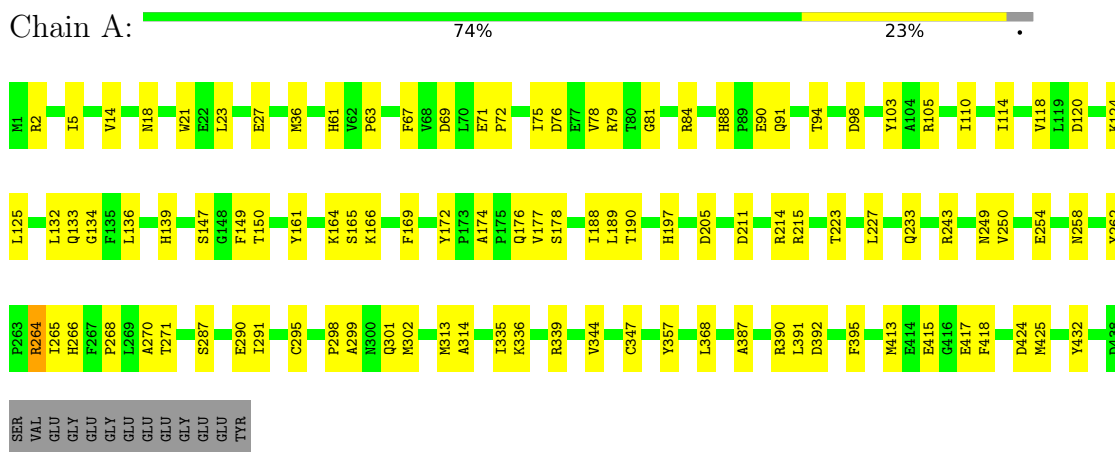
Mol	Chain	Residues	Atoms				ZeroOcc	AltConf	
			Total	C	N	O			P
11	F	1	31	11	5	12	3	0	0



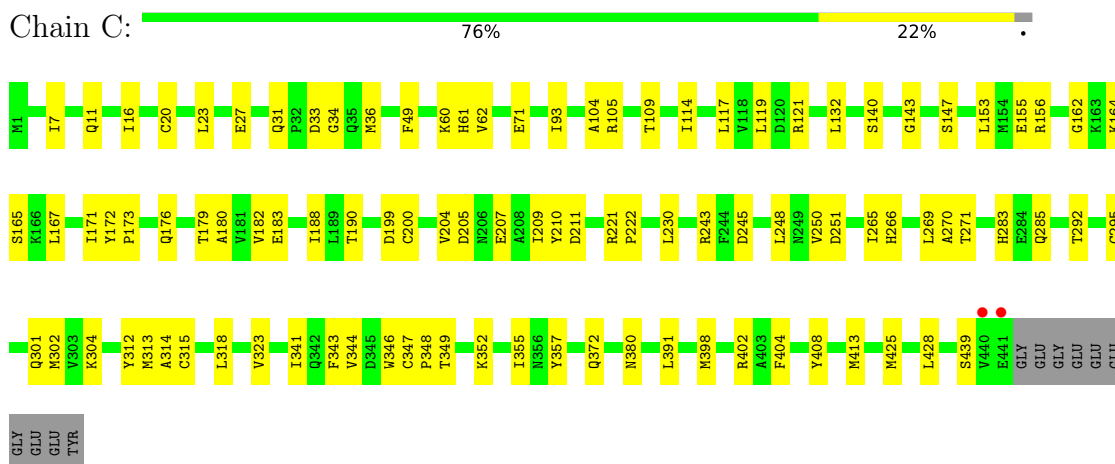
### 3 Residue-property plots

These plots are drawn for all protein, RNA, DNA and oligosaccharide chains in the entry. The first graphic for a chain summarises the proportions of the various outlier classes displayed in the second graphic. The second graphic shows the sequence view annotated by issues in geometry and electron density. Residues are color-coded according to the number of geometric quality criteria for which they contain at least one outlier: green = 0, yellow = 1, orange = 2 and red = 3 or more. A red dot above a residue indicates a poor fit to the electron density ( $RSRZ > 2$ ). Stretches of 2 or more consecutive residues without any outlier are shown as a green connector. Residues present in the sample, but not in the model, are shown in grey.

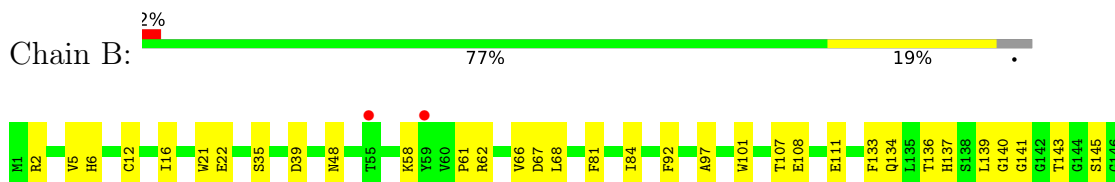
- Molecule 1: Tubulin alpha-1B chain



- Molecule 1: Tubulin alpha-1B chain

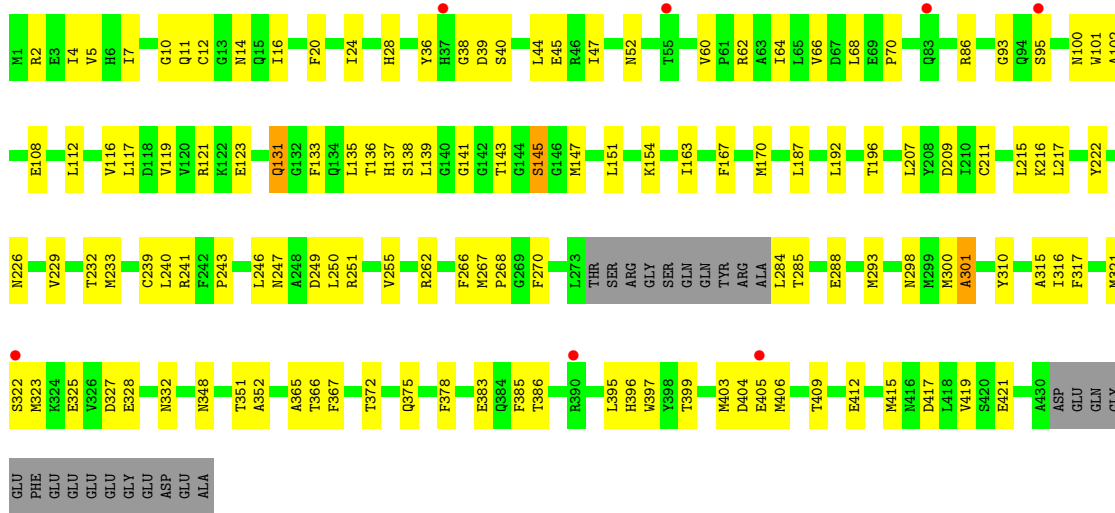


- Molecule 2: Tubulin beta chain

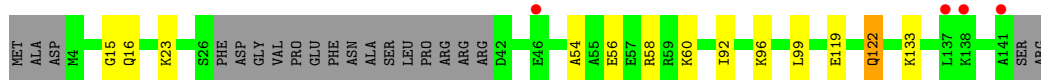
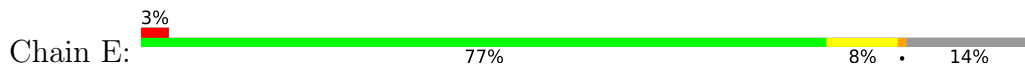




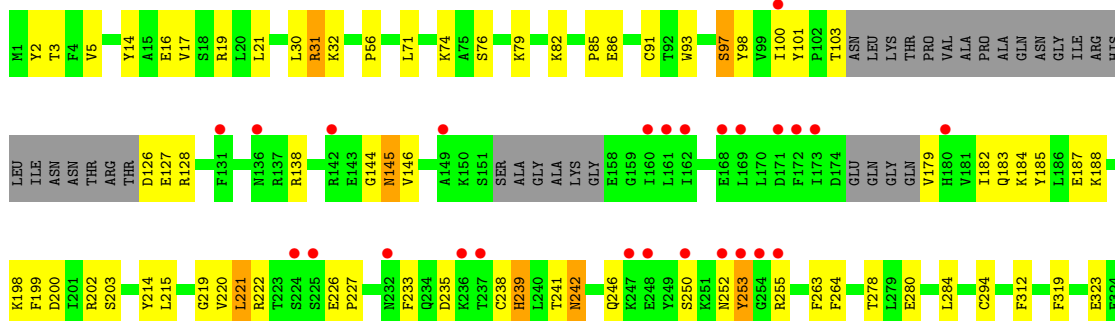
• Molecule 2: Tubulin beta chain



• Molecule 3: Stathmin-4



• Molecule 4: Tubulin tyrosine ligase



L326	W328	P336	Y343	A354	F359	A362	ASP	THR	GLY	GLN	LYS	THR	SER	GLN	PRO	T372	F375	H380	HIS	HIS	HIS	HIS
------	------	------	------	------	------	------	-----	-----	-----	-----	-----	-----	-----	-----	-----	------	------	------	-----	-----	-----	-----

## 4 Data and refinement statistics

Property	Value	Source
Space group	P 21 21 21	Depositor
Cell constants a, b, c, $\alpha$ , $\beta$ , $\gamma$	104.64Å 158.29Å 182.31Å 90.00° 90.00° 90.00°	Depositor
Resolution (Å)	49.87 – 3.09 49.87 – 3.09	Depositor EDS
% Data completeness (in resolution range)	94.2 (49.87-3.09) 94.2 (49.87-3.09)	Depositor EDS
$R_{merge}$	0.30	Depositor
$R_{sym}$	(Not available)	Depositor
$\langle I/\sigma(I) \rangle$ <sup>1</sup>	1.54 (at 3.07Å)	Xtrriage
Refinement program	PHENIX 1.14_3260	Depositor
R, $R_{free}$	0.190 , 0.244 0.191 , 0.244	Depositor DCC
$R_{free}$ test set	2000 reflections (3.80%)	wwPDB-VP
Wilson B-factor (Å <sup>2</sup> )	65.6	Xtrriage
Anisotropy	0.069	Xtrriage
Bulk solvent $k_{sol}$ (e/Å <sup>3</sup> ), $B_{sol}$ (Å <sup>2</sup> )	0.30 , 38.5	EDS
L-test for twinning <sup>2</sup>	$\langle  L  \rangle = 0.49$ , $\langle L^2 \rangle = 0.32$	Xtrriage
Estimated twinning fraction	No twinning to report.	Xtrriage
$F_o, F_c$ correlation	0.92	EDS
Total number of atoms	17563	wwPDB-VP
Average B, all atoms (Å <sup>2</sup> )	63.0	wwPDB-VP

Xtrriage's analysis on translational NCS is as follows: *The largest off-origin peak in the Patterson function is 2.83% of the height of the origin peak. No significant pseudotranslation is detected.*

<sup>1</sup>Intensities estimated from amplitudes.

<sup>2</sup>Theoretical values of  $\langle |L| \rangle$ ,  $\langle L^2 \rangle$  for acentric reflections are 0.5, 0.333 respectively for untwinned datasets, and 0.375, 0.2 for perfectly twinned datasets.

## 5 Model quality [i](#)

### 5.1 Standard geometry [i](#)

Bond lengths and bond angles in the following residue types are not validated in this section: CA, MG, MES, ACP, HOU, GTP, GDP

The Z score for a bond length (or angle) is the number of standard deviations the observed value is removed from the expected value. A bond length (or angle) with  $|Z| > 5$  is considered an outlier worth inspection. RMSZ is the root-mean-square of all Z scores of the bond lengths (or angles).

Mol	Chain	Bond lengths		Bond angles	
		RMSZ	# Z  >5	RMSZ	# Z  >5
1	A	0.55	0/3514	0.70	1/4770 (0.0%)
1	C	0.57	0/3538	0.74	0/4803
2	B	0.54	1/3451 (0.0%)	0.70	0/4674
2	D	0.51	0/3358	0.70	2/4553 (0.0%)
3	E	0.56	0/1041	0.63	0/1382
4	F	0.50	0/2825	0.65	1/3818 (0.0%)
All	All	0.54	1/17727 (0.0%)	0.70	4/24000 (0.0%)

All (1) bond length outliers are listed below:

Mol	Chain	Res	Type	Atoms	Z	Observed(Å)	Ideal(Å)
2	B	111	GLU	CG-CD	5.72	1.60	1.51

All (4) bond angle outliers are listed below:

Mol	Chain	Res	Type	Atoms	Z	Observed(°)	Ideal(°)
1	A	177	VAL	CG1-CB-CG2	8.94	125.21	110.90
4	F	221	LEU	CB-CG-CD2	-5.29	102.01	111.00
2	D	131	GLN	CB-CA-C	-5.12	100.17	110.40
2	D	301	ALA	CB-CA-C	5.04	117.66	110.10

There are no chirality outliers.

There are no planarity outliers.

### 5.2 Too-close contacts [i](#)

In the following table, the Non-H and H(model) columns list the number of non-hydrogen atoms and hydrogen atoms in the chain respectively. The H(added) column lists the number of hydrogen atoms added and optimized by MolProbity. The Clashes column lists the number of clashes within

the asymmetric unit, whereas Symm-Clashes lists symmetry-related clashes.

Mol	Chain	Non-H	H(model)	H(added)	Clashes	Symm-Clashes
1	A	3430	0	3345	70	0
1	C	3452	0	3361	67	0
2	B	3376	0	3257	58	0
2	D	3285	0	3148	113	0
3	E	1026	0	1042	9	0
4	F	2763	0	2718	52	0
5	A	32	0	12	0	0
5	C	32	0	12	2	0
6	A	1	0	0	0	0
6	B	1	0	0	0	0
6	C	1	0	0	0	0
6	F	1	0	0	0	0
7	A	1	0	0	0	0
7	C	1	0	0	0	0
8	B	25	0	0	0	0
8	D	25	0	0	1	0
9	B	28	0	12	2	0
9	D	28	0	12	14	0
10	B	24	0	24	4	0
11	F	31	0	14	6	0
All	All	17563	0	16957	361	0

The all-atom clashscore is defined as the number of clashes found per 1000 atoms (including hydrogen atoms). The all-atom clashscore for this structure is 10.

The worst 5 of 361 close contacts within the same asymmetric unit are listed below, sorted by their clash magnitude.

Atom-1	Atom-2	Interatomic distance (Å)	Clash overlap (Å)
11:F:401:ACP:H8	11:F:401:ACP:H5'2	1.43	0.98
2:D:226:ASN:ND2	9:D:502:GDP:HN1	1.62	0.96
11:F:401:ACP:O2G	11:F:401:ACP:O2B	1.83	0.94
2:D:16:ILE:HG13	2:D:226:ASN:OD1	1.71	0.90
2:D:226:ASN:CG	9:D:502:GDP:HN1	1.77	0.87

There are no symmetry-related clashes.

## 5.3 Torsion angles [i](#)

### 5.3.1 Protein backbone [i](#)

In the following table, the Percentiles column shows the percent Ramachandran outliers of the chain as a percentile score with respect to all X-ray entries followed by that with respect to entries of similar resolution.

The Analysed column shows the number of residues for which the backbone conformation was analysed, and the total number of residues.

Mol	Chain	Analysed	Favoured	Allowed	Outliers	Percentiles	
1	A	438/451 (97%)	407 (93%)	31 (7%)	0	100	100
1	C	442/451 (98%)	429 (97%)	13 (3%)	0	100	100
2	B	427/445 (96%)	405 (95%)	22 (5%)	0	100	100
2	D	416/445 (94%)	382 (92%)	34 (8%)	0	100	100
3	E	121/143 (85%)	117 (97%)	4 (3%)	0	100	100
4	F	329/384 (86%)	312 (95%)	16 (5%)	1 (0%)	41	73
All	All	2173/2319 (94%)	2052 (94%)	120 (6%)	1 (0%)	100	100

All (1) Ramachandran outliers are listed below:

Mol	Chain	Res	Type
4	F	336	PRO

### 5.3.2 Protein sidechains [i](#)

In the following table, the Percentiles column shows the percent sidechain outliers of the chain as a percentile score with respect to all X-ray entries followed by that with respect to entries of similar resolution.

The Analysed column shows the number of residues for which the sidechain conformation was analysed, and the total number of residues.

Mol	Chain	Analysed	Rotameric	Outliers	Percentiles	
1	A	371/379 (98%)	369 (100%)	2 (0%)	88	94
1	C	374/379 (99%)	371 (99%)	3 (1%)	81	92
2	B	371/383 (97%)	367 (99%)	4 (1%)	73	89
2	D	359/383 (94%)	355 (99%)	4 (1%)	73	89
3	E	112/127 (88%)	110 (98%)	2 (2%)	59	82
4	F	301/342 (88%)	292 (97%)	9 (3%)	41	71

*Continued on next page...*

*Continued from previous page...*

Mol	Chain	Analysed	Rotameric	Outliers	Percentiles
All	All	1888/1993 (95%)	1864 (99%)	24 (1%)	69 87

5 of 24 residues with a non-rotameric sidechain are listed below:

Mol	Chain	Res	Type
3	E	122	GLN
4	F	145	ASN
4	F	97	SER
4	F	184	LYS
1	C	251	ASP

Sometimes sidechains can be flipped to improve hydrogen bonding and reduce clashes. All (5) such sidechains are listed below:

Mol	Chain	Res	Type
1	A	15	GLN
1	C	176	GLN
2	D	347	ASN
4	F	145	ASN
4	F	183	GLN

### 5.3.3 RNA [i](#)

There are no RNA molecules in this entry.

## 5.4 Non-standard residues in protein, DNA, RNA chains [i](#)

There are no non-standard protein/DNA/RNA residues in this entry.

## 5.5 Carbohydrates [i](#)

There are no monosaccharides in this entry.

## 5.6 Ligand geometry [i](#)

Of 15 ligands modelled in this entry, 6 are monoatomic - leaving 9 for Mogul analysis.

In the following table, the Counts columns list the number of bonds (or angles) for which Mogul statistics could be retrieved, the number of bonds (or angles) that are observed in the model and the number of bonds (or angles) that are defined in the Chemical Component Dictionary. The



Link column lists molecule types, if any, to which the group is linked. The Z score for a bond length (or angle) is the number of standard deviations the observed value is removed from the expected value. A bond length (or angle) with  $|Z| > 2$  is considered an outlier worth inspection. RMSZ is the root-mean-square of all Z scores of the bond lengths (or angles).

Mol	Type	Chain	Res	Link	Bond lengths			Bond angles		
					Counts	RMSZ	# Z  > 2	Counts	RMSZ	# Z  > 2
10	MES	B	505	-	12,12,12	4.31	7 (58%)	14,16,16	2.07	6 (42%)
11	ACP	F	401	6	27,33,33	1.57	7 (25%)	32,52,52	1.76	6 (18%)
5	GTP	C	501	6	26,34,34	1.34	2 (7%)	32,54,54	1.55	7 (21%)
8	H0U	B	501	-	23,27,27	6.86	6 (26%)	30,39,39	2.61	9 (30%)
9	GDP	B	503	6	24,30,30	1.12	1 (4%)	30,47,47	1.38	5 (16%)
10	MES	B	504	-	12,12,12	4.55	7 (58%)	14,16,16	2.00	4 (28%)
5	GTP	A	501	6	26,34,34	1.19	3 (11%)	32,54,54	1.75	7 (21%)
9	GDP	D	502	-	24,30,30	1.98	7 (29%)	30,47,47	2.10	11 (36%)
8	H0U	D	501	-	23,27,27	7.21	6 (26%)	30,39,39	2.08	7 (23%)

In the following table, the Chirals column lists the number of chiral outliers, the number of chiral centers analysed, the number of these observed in the model and the number defined in the Chemical Component Dictionary. Similar counts are reported in the Torsion and Rings columns. '-' means no outliers of that kind were identified.

Mol	Type	Chain	Res	Link	Chirals	Torsions	Rings
10	MES	B	505	-	-	4/6/14/14	0/1/1/1
11	ACP	F	401	6	-	10/15/38/38	0/3/3/3
5	GTP	C	501	6	-	1/18/38/38	0/3/3/3
8	H0U	B	501	-	-	0/15/17/17	0/3/3/3
9	GDP	B	503	6	-	6/12/32/32	0/3/3/3
10	MES	B	504	-	-	5/6/14/14	0/1/1/1
5	GTP	A	501	6	-	6/18/38/38	0/3/3/3
9	GDP	D	502	-	-	2/12/32/32	0/3/3/3
8	H0U	D	501	-	-	0/15/17/17	0/3/3/3

The worst 5 of 46 bond length outliers are listed below:

Mol	Chain	Res	Type	Atoms	Z	Observed(Å)	Ideal(Å)
8	D	501	H0U	O02-S02	21.70	1.68	1.43
8	B	501	H0U	O02-S02	21.57	1.68	1.43
8	D	501	H0U	O01-S02	21.32	1.67	1.43
8	B	501	H0U	O01-S02	18.87	1.65	1.43
8	B	501	H0U	C19-N02	13.50	1.46	1.14

The worst 5 of 62 bond angle outliers are listed below:

Mol	Chain	Res	Type	Atoms	Z	Observed(°)	Ideal(°)
8	B	501	H0U	O02-S02-O01	-8.29	109.36	119.55
8	D	501	H0U	O02-S02-O01	-7.19	110.71	119.55
8	B	501	H0U	O01-S02-C12	-6.73	99.68	107.97
8	B	501	H0U	C12-S02-N01	5.64	113.93	106.83
9	D	502	GDP	O4'-C1'-C2'	-5.27	99.23	106.93

There are no chirality outliers.

5 of 34 torsion outliers are listed below:

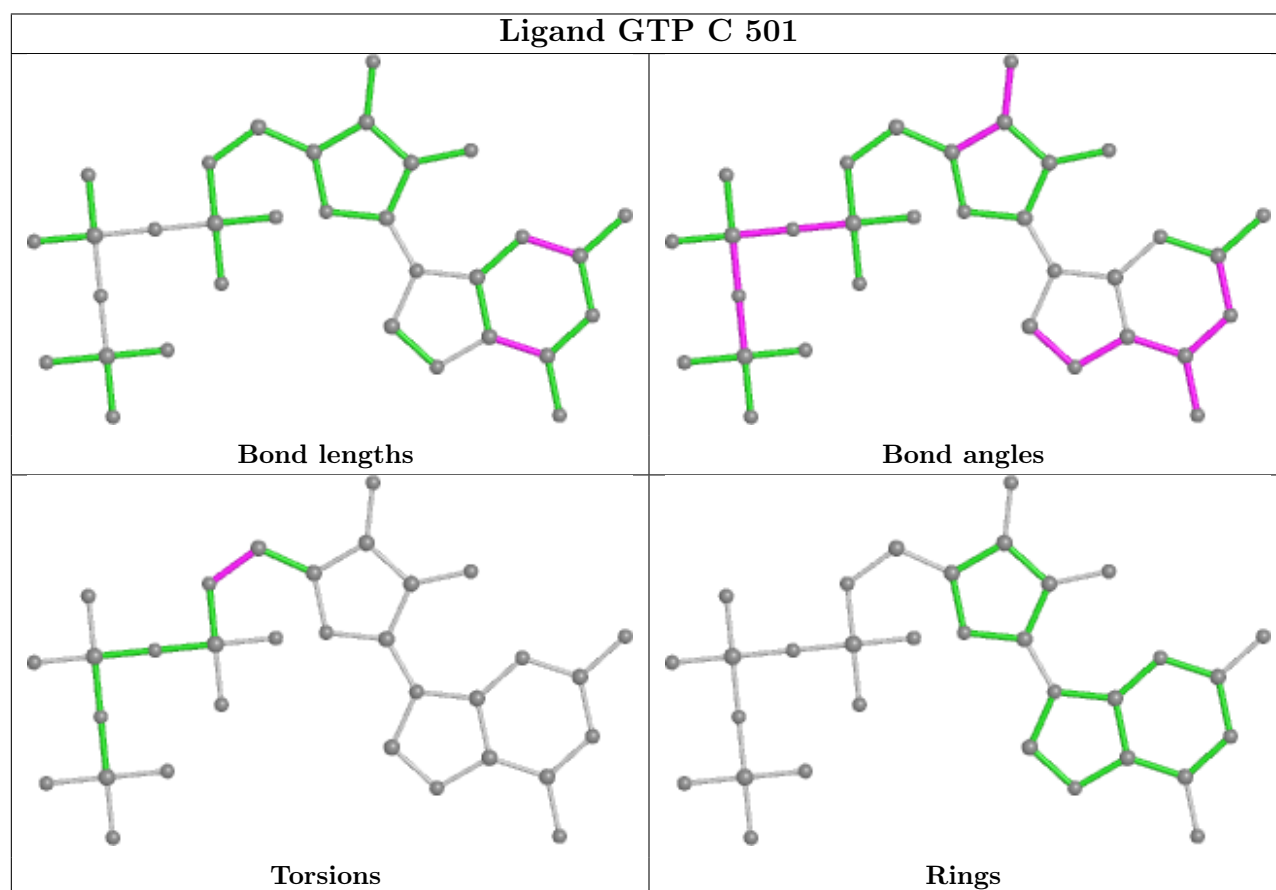
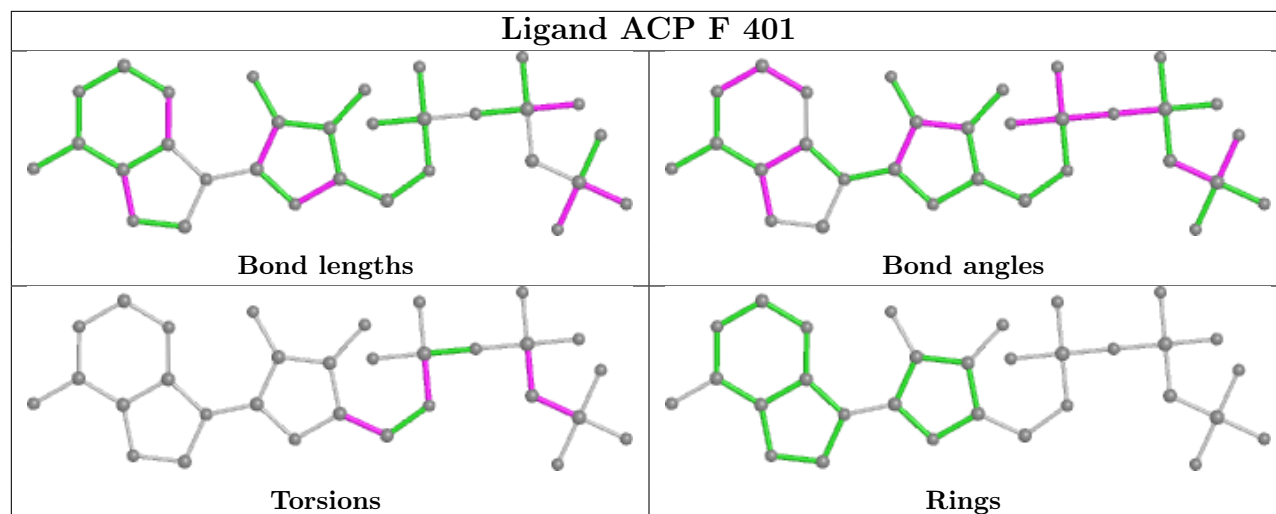
Mol	Chain	Res	Type	Atoms
5	A	501	GTP	PB-O3B-PG-O2G
5	A	501	GTP	C5'-O5'-PA-O2A
9	B	503	GDP	PA-O3A-PB-O3B
9	B	503	GDP	C5'-O5'-PA-O1A
9	D	502	GDP	C5'-O5'-PA-O2A

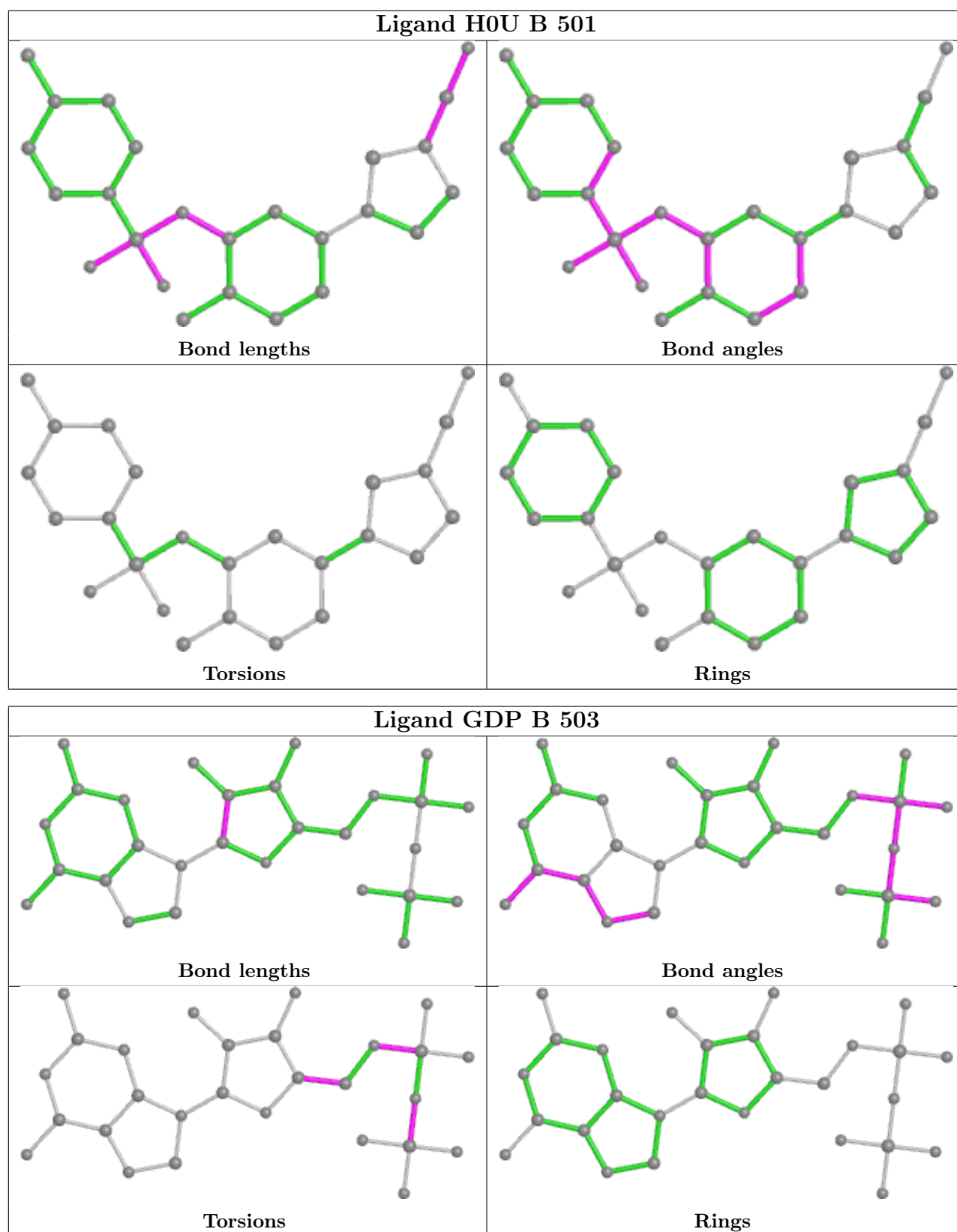
There are no ring outliers.

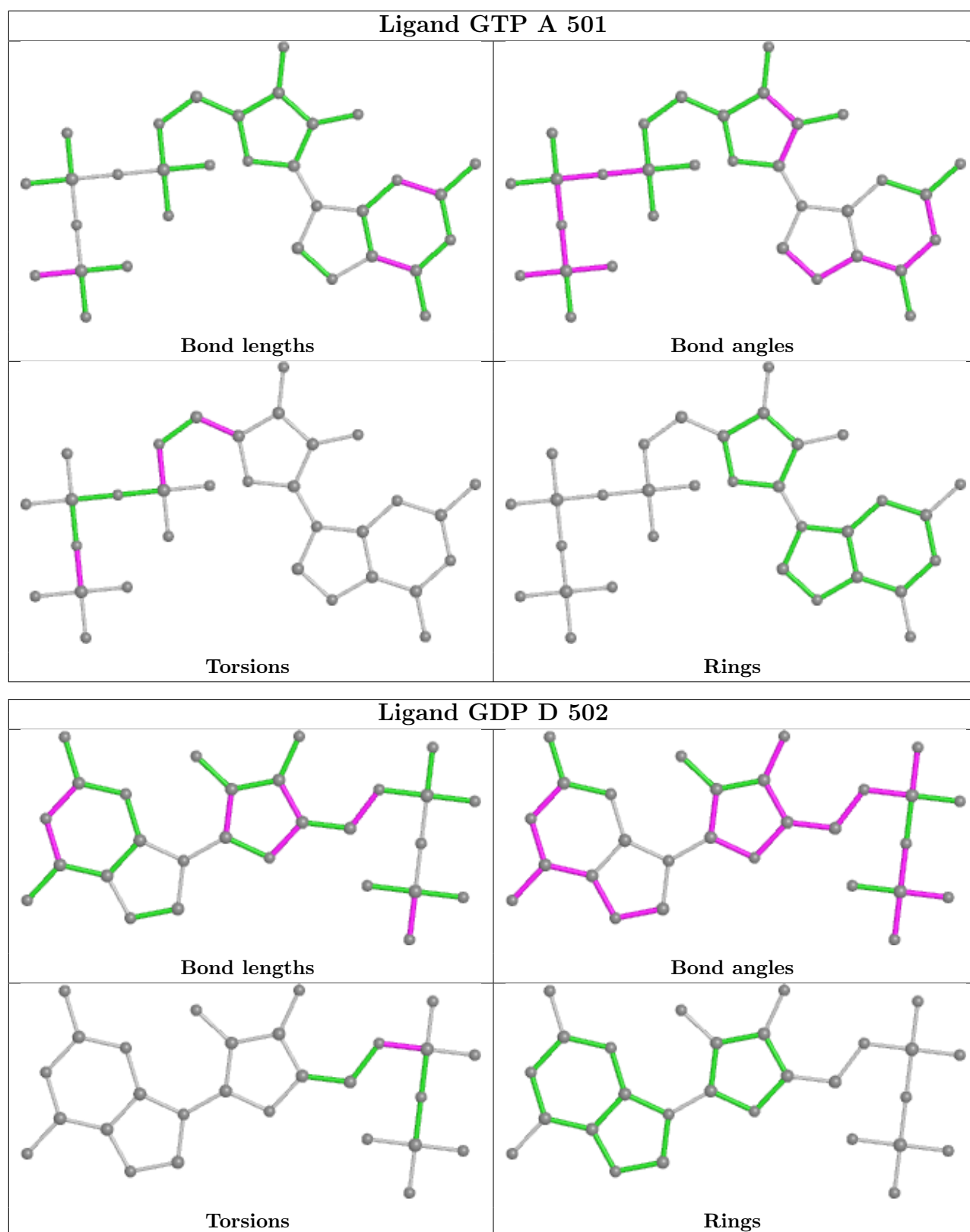
7 monomers are involved in 29 short contacts:

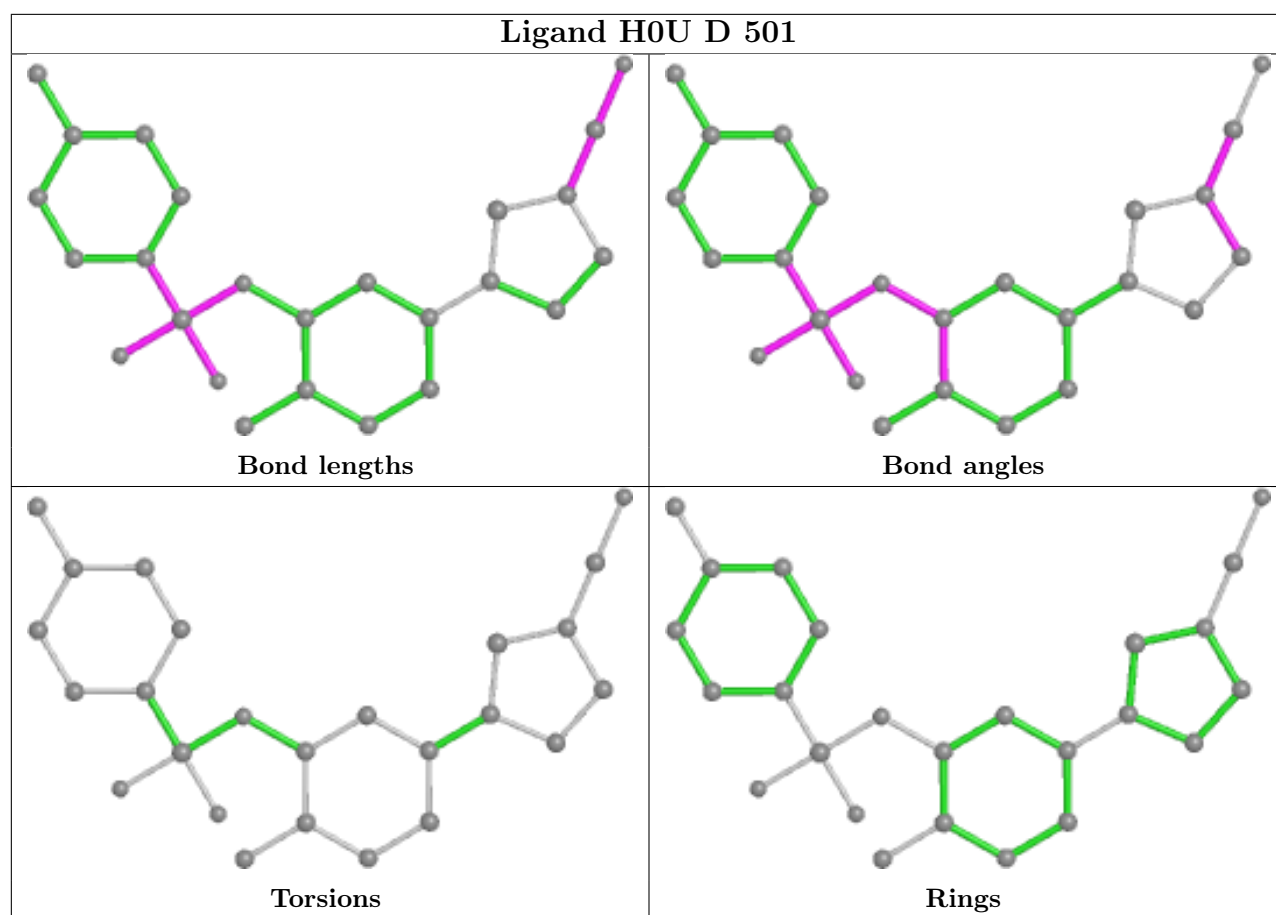
Mol	Chain	Res	Type	Clashes	Symm-Clashes
10	B	505	MES	2	0
11	F	401	ACP	6	0
5	C	501	GTP	2	0
9	B	503	GDP	2	0
10	B	504	MES	2	0
9	D	502	GDP	14	0
8	D	501	H0U	1	0

The following is a two-dimensional graphical depiction of Mogul quality analysis of bond lengths, bond angles, torsion angles, and ring geometry for all instances of the Ligand of Interest. In addition, ligands with molecular weight > 250 and outliers as shown on the validation Tables will also be included. For torsion angles, if less than 5% of the Mogul distribution of torsion angles is within 10 degrees of the torsion angle in question, then that torsion angle is considered an outlier. Any bond that is central to one or more torsion angles identified as an outlier by Mogul will be highlighted in the graph. For rings, the root-mean-square deviation (RMSD) between the ring in question and similar rings identified by Mogul is calculated over all ring torsion angles. If the average RMSD is greater than 60 degrees and the minimal RMSD between the ring in question and any Mogul-identified rings is also greater than 60 degrees, then that ring is considered an outlier. The outliers are highlighted in purple. The color gray indicates Mogul did not find sufficient equivalents in the CSD to analyse the geometry.









## 5.7 Other polymers [i](#)

There are no such residues in this entry.

## 5.8 Polymer linkage issues [i](#)

There are no chain breaks in this entry.

## 6 Fit of model and data [i](#)

### 6.1 Protein, DNA and RNA chains [i](#)

In the following table, the column labelled ‘#RSRZ > 2’ contains the number (and percentage) of RSRZ outliers, followed by percent RSRZ outliers for the chain as percentile scores relative to all X-ray entries and entries of similar resolution. The OWAB column contains the minimum, median, 95<sup>th</sup> percentile and maximum values of the occupancy-weighted average B-factor per residue. The column labelled ‘Q < 0.9’ lists the number of (and percentage) of residues with an average occupancy less than 0.9.

Mol	Chain	Analysed	<RSRZ>	#RSRZ>2	OWAB(Å <sup>2</sup> )	Q<0.9
1	A	438/451 (97%)	-0.37	0 <span style="border: 1px solid blue; padding: 2px;">100</span> <span style="border: 1px solid blue; padding: 2px;">100</span>	38, 53, 76, 90	0
1	C	441/451 (97%)	-0.49	2 (0%) <span style="border: 1px solid blue; padding: 2px;">91</span> <span style="border: 1px solid blue; padding: 2px;">81</span>	32, 45, 65, 100	1 (0%)
2	B	429/445 (96%)	-0.29	9 (2%) <span style="border: 1px solid blue; padding: 2px;">63</span> <span style="border: 1px solid red; padding: 2px;">43</span>	33, 53, 86, 120	1 (0%)
2	D	420/445 (94%)	-0.09	7 (1%) <span style="border: 1px solid blue; padding: 2px;">70</span> <span style="border: 1px solid gray; padding: 2px;">49</span>	30, 74, 110, 129	3 (0%)
3	E	123/143 (86%)	-0.14	4 (3%) <span style="border: 1px solid gray; padding: 2px;">46</span> <span style="border: 1px solid red; padding: 2px;">24</span>	39, 66, 112, 131	0
4	F	339/384 (88%)	0.17	26 (7%) <span style="border: 1px solid red; padding: 2px;">13</span> <span style="border: 1px solid red; padding: 2px;">5</span>	42, 76, 130, 146	0
All	All	2190/2319 (94%)	-0.23	48 (2%) <span style="border: 1px solid blue; padding: 2px;">62</span> <span style="border: 1px solid red; padding: 2px;">41</span>	30, 58, 109, 146	5 (0%)

The worst 5 of 48 RSRZ outliers are listed below:

Mol	Chain	Res	Type	RSRZ
2	B	277	GLY	5.2
4	F	172	PHE	4.6
3	E	141	ALA	4.6
4	F	162	ILE	4.4
2	B	279	GLN	3.4

### 6.2 Non-standard residues in protein, DNA, RNA chains [i](#)

There are no non-standard protein/DNA/RNA residues in this entry.

### 6.3 Carbohydrates [i](#)

There are no monosaccharides in this entry.

## 6.4 Ligands [i](#)

In the following table, the Atoms column lists the number of modelled atoms in the group and the number defined in the chemical component dictionary. The B-factors column lists the minimum, median, 95<sup>th</sup> percentile and maximum values of B factors of atoms in the group. The column labelled 'Q< 0.9' lists the number of atoms with occupancy less than 0.9.

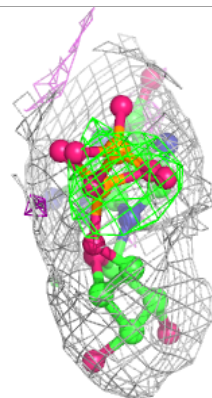
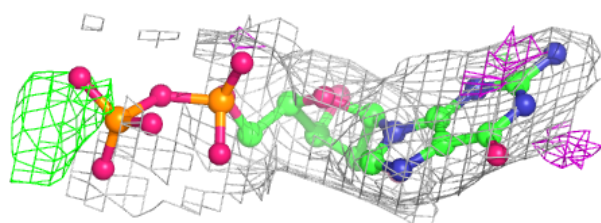
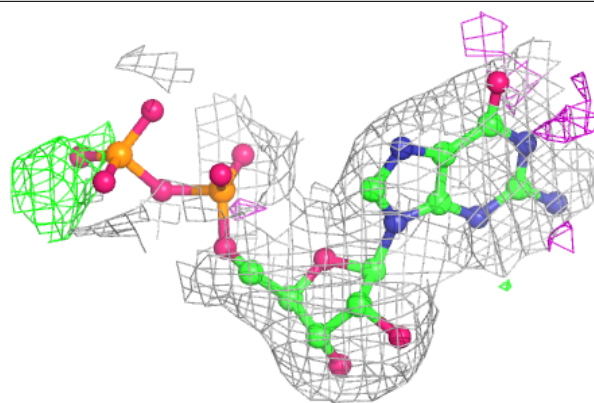
Mol	Type	Chain	Res	Atoms	RSCC	RSR	B-factors(Å <sup>2</sup> )	Q<0.9
6	MG	B	502	1/1	0.87	0.63	54,54,54,54	0
6	MG	C	502	1/1	0.87	0.50	47,47,47,47	0
6	MG	F	402	1/1	0.87	0.23	97,97,97,97	0
6	MG	A	502	1/1	0.89	0.45	50,50,50,50	0
9	GDP	D	502	28/28	0.91	0.16	65,75,85,89	0
10	MES	B	504	12/12	0.91	0.18	52,67,80,86	0
11	ACP	F	401	31/31	0.91	0.16	85,91,116,123	0
10	MES	B	505	12/12	0.93	0.23	67,83,92,95	0
7	CA	A	503	1/1	0.93	0.34	73,73,73,73	0
7	CA	C	503	1/1	0.95	0.34	59,59,59,59	0
8	H0U	B	501	25/25	0.95	0.23	50,56,67,69	0
8	H0U	D	501	25/25	0.96	0.23	47,57,81,96	0
9	GDP	B	503	28/28	0.96	0.20	30,41,46,55	0
5	GTP	C	501	32/32	0.96	0.20	31,40,46,48	0
5	GTP	A	501	32/32	0.97	0.23	36,46,52,56	0

The following is a graphical depiction of the model fit to experimental electron density of all instances of the Ligand of Interest. In addition, ligands with molecular weight > 250 and outliers as shown on the geometry validation Tables will also be included. Each fit is shown from different orientation to approximate a three-dimensional view.

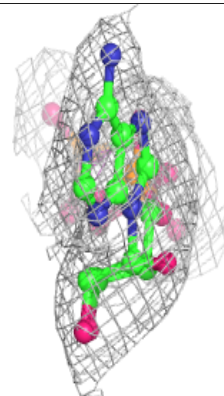
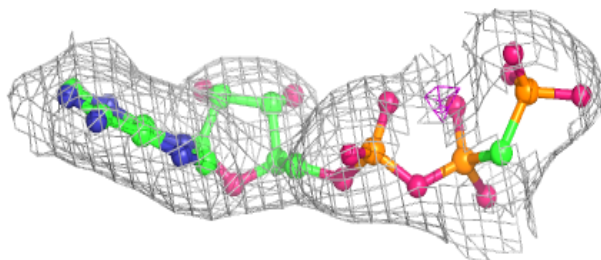
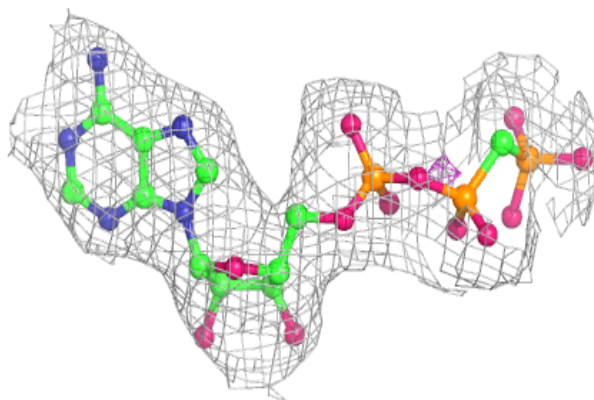


**Electron density around GDP D 502:**

$2mF_o-DF_c$  (at 0.7 rmsd) in gray  
 $mF_o-DF_c$  (at 3 rmsd) in purple (negative)  
and green (positive)

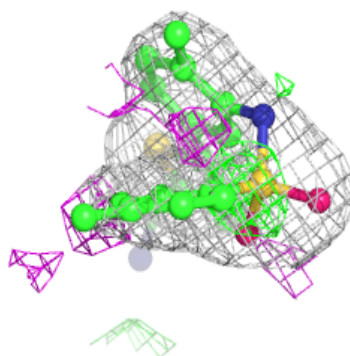
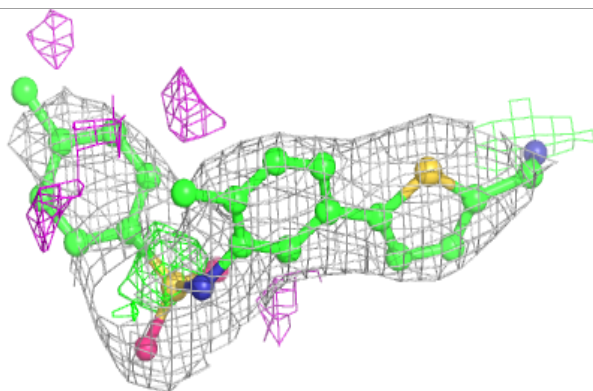
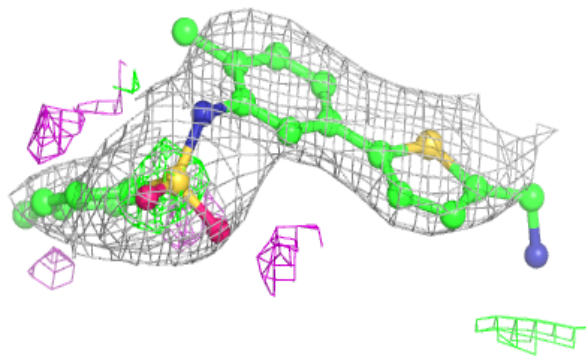
**Electron density around ACP F 401:**

$2mF_o-DF_c$  (at 0.7 rmsd) in gray  
 $mF_o-DF_c$  (at 3 rmsd) in purple (negative)  
and green (positive)

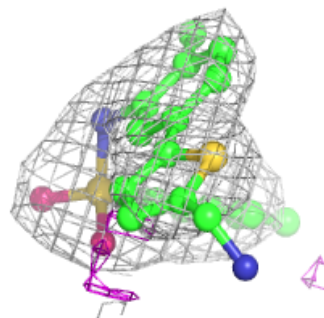
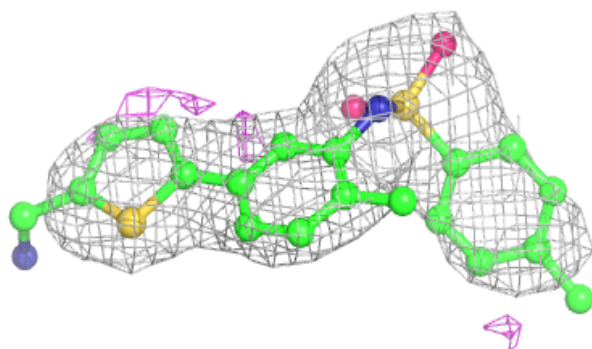
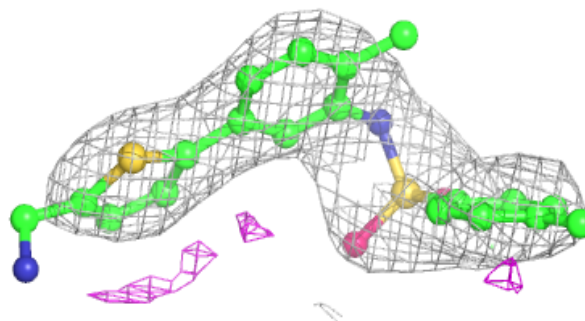


**Electron density around H0U B 501:**

$2mF_o-DF_c$  (at 0.7 rmsd) in gray  
 $mF_o-DF_c$  (at 3 rmsd) in purple (negative)  
and green (positive)

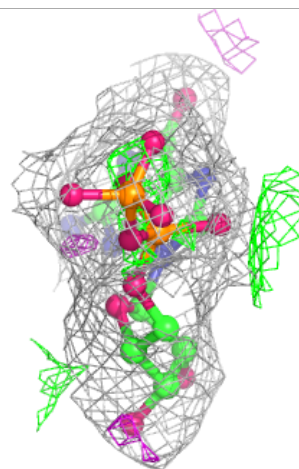
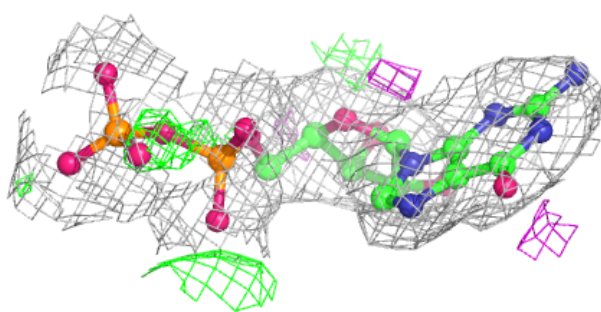
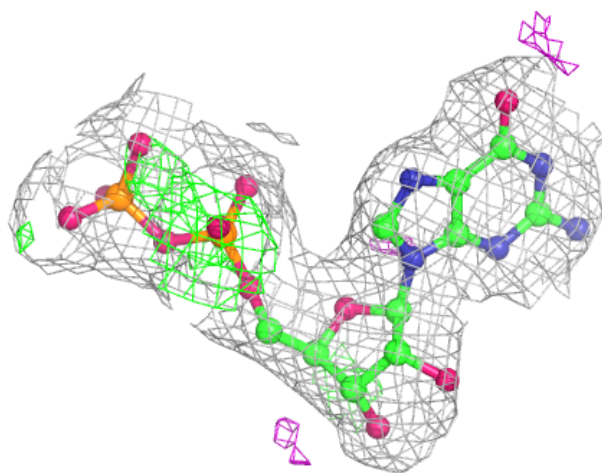
**Electron density around H0U D 501:**

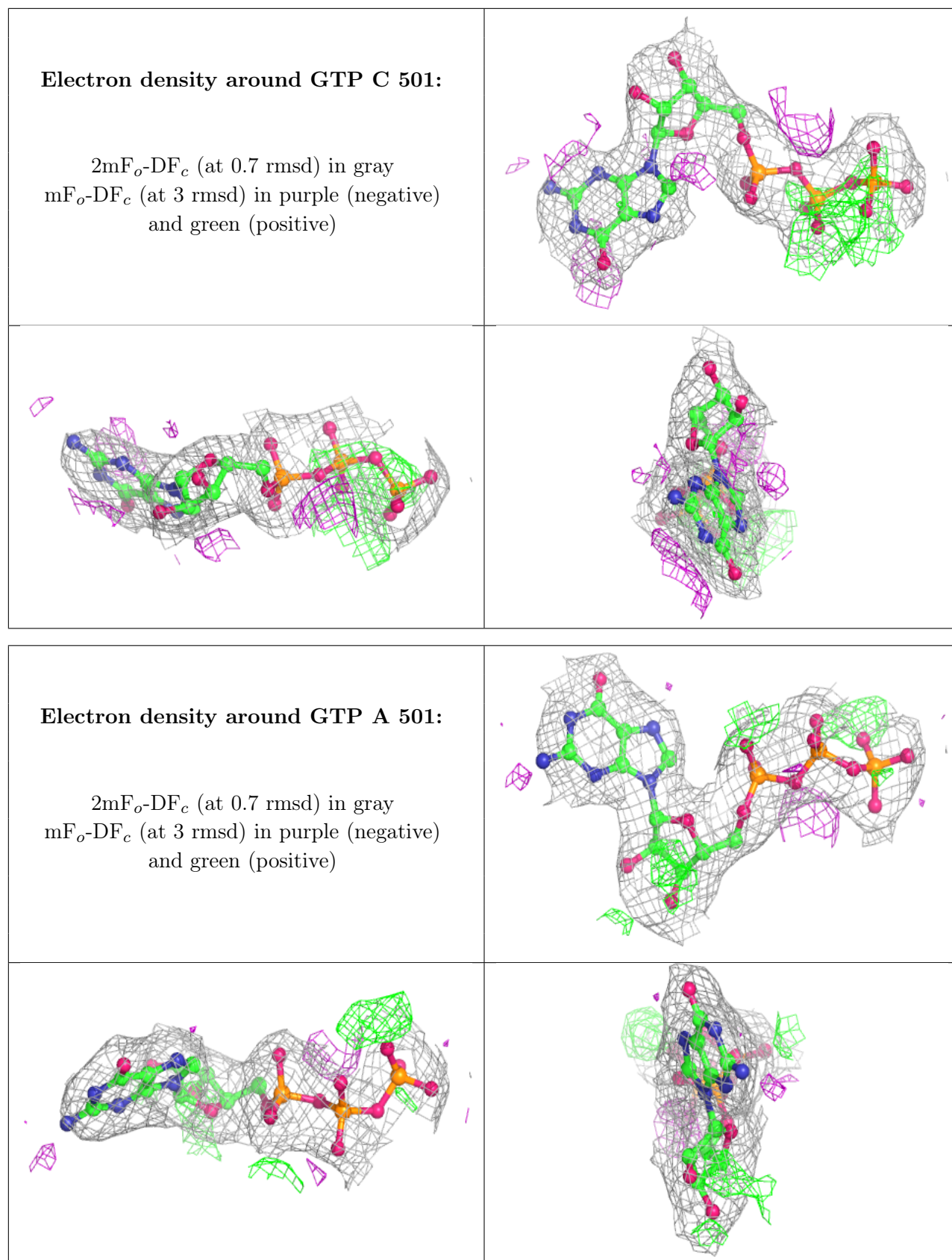
$2mF_o-DF_c$  (at 0.7 rmsd) in gray  
 $mF_o-DF_c$  (at 3 rmsd) in purple (negative)  
and green (positive)



**Electron density around GDP B 503:**

$2mF_o-DF_c$  (at 0.7 rmsd) in gray  
 $mF_o-DF_c$  (at 3 rmsd) in purple (negative)  
and green (positive)





## 6.5 Other polymers [i](#)

There are no such residues in this entry.