



Full wwPDB X-ray Structure Validation Report ⓘ

Oct 17, 2023 – 10:01 AM EDT

PDB ID : 2DDW
Title : Crystal Structure of Pyridoxal Kinase from the Escherichia coli PdxK gene complexed with pyridoxal at 3.2 Å resolution
Authors : Safo, M.K.; Musayev, F.N.; di Salvo, M.L.; Hunt, S.; Claude, J.B.; Schirch, V.
Deposited on : 2006-02-03
Resolution : 3.20 Å (reported)

This is a Full wwPDB X-ray Structure Validation Report for a publicly released PDB entry.

We welcome your comments at validation@mail.wwpdb.org

A user guide is available at

<https://www.wwpdb.org/validation/2017/XrayValidationReportHelp>

with specific help available everywhere you see the ⓘ symbol.

The types of validation reports are described at

<http://www.wwpdb.org/validation/2017/FAQs#types>.

The following versions of software and data (see [references ⓘ](#)) were used in the production of this report:

MolProbity : 4.02b-467
Mogul : 1.8.5 (274361), CSD as541be (2020)
Xtriage (Phenix) : 1.13
EDS : 2.36
Percentile statistics : 20191225.v01 (using entries in the PDB archive December 25th 2019)
Refmac : 5.8.0158
CCP4 : 7.0.044 (Gargrove)
Ideal geometry (proteins) : Engh & Huber (2001)
Ideal geometry (DNA, RNA) : Parkinson et al. (1996)
Validation Pipeline (wwPDB-VP) : 2.36

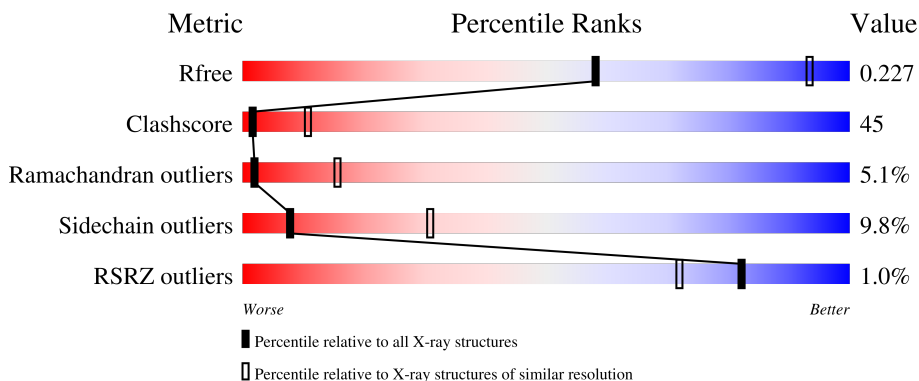
1 Overall quality at a glance

The following experimental techniques were used to determine the structure:

X-RAY DIFFRACTION

The reported resolution of this entry is 3.20 Å.

Percentile scores (ranging between 0-100) for global validation metrics of the entry are shown in the following graphic. The table shows the number of entries on which the scores are based.



Metric	Whole archive (#Entries)	Similar resolution (#Entries, resolution range(Å))
R_{free}	130704	1133 (3.20-3.20)
Clashscore	141614	1253 (3.20-3.20)
Ramachandran outliers	138981	1234 (3.20-3.20)
Sidechain outliers	138945	1233 (3.20-3.20)
RSRZ outliers	127900	1095 (3.20-3.20)

The table below summarises the geometric issues observed across the polymeric chains and their fit to the electron density. The red, orange, yellow and green segments of the lower bar indicate the fraction of residues that contain outliers for ≥ 3 , 2, 1 and 0 types of geometric quality criteria respectively. A grey segment represents the fraction of residues that are not modelled. The numeric value for each fraction is indicated below the corresponding segment, with a dot representing fractions $\leq 5\%$. The upper red bar (where present) indicates the fraction of residues that have poor fit to the electron density. The numeric value is given above the bar.

Mol	Chain	Length	Quality of chain
1	A	283	 33% 51% 8% 7%
1	B	283	 31% 52% 8% 8%

2 Entry composition [i](#)

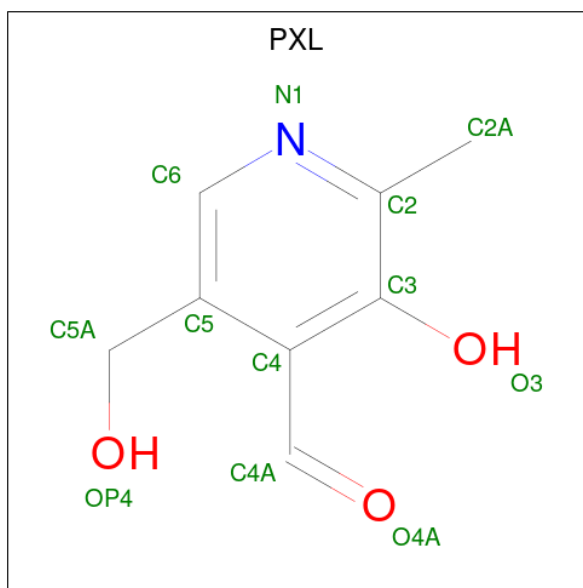
There are 3 unique types of molecules in this entry. The entry contains 4083 atoms, of which 0 are hydrogens and 0 are deuteriums.

In the tables below, the ZeroOcc column contains the number of atoms modelled with zero occupancy, the AltConf column contains the number of residues with at least one atom in alternate conformation and the Trace column contains the number of residues modelled with at most 2 atoms.

- Molecule 1 is a protein called Pyridoxine kinase.

Mol	Chain	Residues	Atoms					ZeroOcc	AltConf	Trace
			Total	C	N	O	S			
1	A	263	Total 2018	C 1289	N 343	O 380	S 6	0	0	0
1	B	261	Total 1992	C 1266	N 342	O 378	S 6	0	0	0

- Molecule 2 is 3-HYDROXY-5-(HYDROXYMETHYL)-2-METHYLISONICOTINALDEHYDE (three-letter code: PXL) (formula: C₈H₉NO₃).



Mol	Chain	Residues	Atoms				ZeroOcc	AltConf
			Total	C	N	O		
2	A	1	Total 12	C 8	N 1	O 3	0	0
2	B	1	Total 12	C 8	N 1	O 3	0	0

- Molecule 3 is water.

Mol	Chain	Residues	Atoms	ZeroOcc	AltConf
3	A	24	Total O 24 24	0	0
3	B	25	Total O 25 25	0	0

E271	S272	L277	P278	P279	L280	ALA	GLU	ALA
------	------	------	------	------	------	-----	-----	-----

4 Data and refinement statistics

Property	Value	Source
Space group	P 21 21 21	Depositor
Cell constants a, b, c, α , β , γ	65.67Å 75.03Å 109.36Å 90.00° 90.00° 90.00°	Depositor
Resolution (Å)	19.90 – 3.20 19.90 – 3.00	Depositor EDS
% Data completeness (in resolution range)	89.4 (19.90-3.20) 94.3 (19.90-3.00)	Depositor EDS
R_{merge}	0.06	Depositor
R_{sym}	(Not available)	Depositor
$\langle I/\sigma(I) \rangle$ ¹	2.43 (at 2.98Å)	Xtrriage
Refinement program	CNS 1.0	Depositor
R, R_{free}	0.237 , 0.254 0.220 , 0.227	Depositor DCC
R_{free} test set	417 reflections (3.93%)	wwPDB-VP
Wilson B-factor (Å ²)	49.8	Xtrriage
Anisotropy	1.136	Xtrriage
Bulk solvent k_{sol} (e/Å ³), B_{sol} (Å ²)	0.30 , 65.2	EDS
L-test for twinning ²	$\langle L \rangle = 0.45$, $\langle L^2 \rangle = 0.28$	Xtrriage
Estimated twinning fraction	No twinning to report.	Xtrriage
F_o, F_c correlation	0.91	EDS
Total number of atoms	4083	wwPDB-VP
Average B, all atoms (Å ²)	33.0	wwPDB-VP

Xtrriage's analysis on translational NCS is as follows: *The largest off-origin peak in the Patterson function is 5.95% of the height of the origin peak. No significant pseudotranslation is detected.*

¹Intensities estimated from amplitudes.

²Theoretical values of $\langle |L| \rangle$, $\langle L^2 \rangle$ for acentric reflections are 0.5, 0.333 respectively for untwinned datasets, and 0.375, 0.2 for perfectly twinned datasets.

5 Model quality [i](#)

5.1 Standard geometry [i](#)

Bond lengths and bond angles in the following residue types are not validated in this section: PXL

The Z score for a bond length (or angle) is the number of standard deviations the observed value is removed from the expected value. A bond length (or angle) with $|Z| > 5$ is considered an outlier worth inspection. RMSZ is the root-mean-square of all Z scores of the bond lengths (or angles).

Mol	Chain	Bond lengths		Bond angles	
		RMSZ	# Z >5	RMSZ	# Z >5
1	A	0.42	0/2053	0.70	0/2796
1	B	0.39	0/2025	0.70	0/2757
All	All	0.41	0/4078	0.70	0/5553

There are no bond length outliers.

There are no bond angle outliers.

There are no chirality outliers.

There are no planarity outliers.

5.2 Too-close contacts [i](#)

In the following table, the Non-H and H(model) columns list the number of non-hydrogen atoms and hydrogen atoms in the chain respectively. The H(added) column lists the number of hydrogen atoms added and optimized by MolProbity. The Clashes column lists the number of clashes within the asymmetric unit, whereas Symm-Clashes lists symmetry-related clashes.

Mol	Chain	Non-H	H(model)	H(added)	Clashes	Symm-Clashes
1	A	2018	0	2066	195	0
1	B	1992	0	2023	183	0
2	A	12	0	9	0	0
2	B	12	0	9	2	0
3	A	24	0	0	0	0
3	B	25	0	0	2	0
All	All	4083	0	4107	363	0

The all-atom clashscore is defined as the number of clashes found per 1000 atoms (including hydrogen atoms). The all-atom clashscore for this structure is 45.

All (363) close contacts within the same asymmetric unit are listed below, sorted by their clash

magnitude.

Atom-1	Atom-2	Interatomic distance (Å)	Clash overlap (Å)
1:B:91:ALA:O	1:B:92:VAL:HG23	1.64	0.98
1:B:174:LEU:HD22	1:B:178:ILE:HD11	1.44	0.97
1:A:22:GLN:HE21	1:A:95:GLY:HA3	1.33	0.92
1:B:280:LEU:HD13	1:B:280:LEU:H	1.33	0.91
1:B:157:THR:HG22	1:B:193:VAL:HB	1.53	0.88
1:A:92:VAL:HG11	1:A:110:LEU:HD21	1.55	0.87
1:A:128:ILE:HD11	1:A:135:ILE:HG12	1.58	0.86
1:A:278:PRO:HB2	1:A:279:PRO:HD2	1.57	0.86
1:B:167:THR:HG22	1:B:184:LEU:HD11	1.57	0.84
1:A:170:ASN:HB3	1:A:176:SER:HB3	1.62	0.81
1:A:23:SER:HB3	1:A:96:TYR:HB3	1.61	0.81
1:A:159:ASN:ND2	1:A:162:GLU:H	1.78	0.80
1:A:22:GLN:NE2	1:A:95:GLY:HA3	1.96	0.80
1:A:214:ASP:O	1:A:215:SER:HB3	1.81	0.80
1:A:126:PRO:O	1:A:128:ILE:HG22	1.81	0.79
1:B:19:VAL:HG23	1:B:89:LEU:HD11	1.65	0.79
1:B:195:THR:HG22	1:B:208:VAL:HG13	1.66	0.78
1:A:234:LEU:HD13	1:A:260:VAL:HG22	1.68	0.76
1:A:159:ASN:HD22	1:A:161:PHE:H	1.29	0.76
1:B:143:GLU:CD	1:B:143:GLU:H	1.86	0.76
1:A:139:PRO:O	1:A:142:PRO:HD2	1.86	0.75
1:A:100:ALA:HB1	1:A:144:ALA:HB2	1.69	0.75
1:B:58:PRO:HD2	2:B:1005:PXL:O3	1.88	0.74
1:A:18:ILE:HB	1:A:46:VAL:HG23	1.71	0.72
1:A:205:GLU:HB2	1:A:223:ARG:HH21	1.54	0.72
1:B:19:VAL:HG23	1:B:89:LEU:CD1	2.19	0.72
1:B:103:ILE:HG23	1:B:149:LEU:HD22	1.69	0.72
1:B:240:ILE:HG13	1:B:244:LEU:CD1	2.20	0.72
1:A:96:TYR:HA	1:A:127:VAL:HG21	1.72	0.72
1:A:159:ASN:ND2	1:A:161:PHE:H	1.88	0.71
1:A:258:LEU:HA	1:A:261:LEU:HD12	1.71	0.71
1:B:83:ARG:HE	1:B:83:ARG:HA	1.53	0.71
1:A:267:THR:HG21	1:A:275:LEU:HA	1.72	0.71
1:B:126:PRO:O	1:B:128:ILE:HG13	1.91	0.70
1:A:29:SER:O	1:A:30:VAL:HG13	1.92	0.70
1:B:18:ILE:HG22	1:B:19:VAL:N	2.07	0.70
1:A:32:ASN:ND2	1:A:48:ALA:HB1	2.06	0.70
1:A:224:VAL:HG21	1:A:268:GLN:HE22	1.58	0.69
1:B:32:ASN:HA	1:B:35:ALA:HB3	1.75	0.69
1:A:264:MET:O	1:A:268:GLN:HG3	1.94	0.68
1:B:30:VAL:HG11	1:B:57:THR:HG21	1.76	0.68

Continued on next page...

Continued from previous page...

Atom-1	Atom-2	Interatomic distance (Å)	Clash overlap (Å)
1:B:159:ASN:ND2	1:B:162:GLU:H	1.91	0.68
1:B:280:LEU:H	1:B:280:LEU:CD1	2.04	0.68
1:A:172:ARG:N	1:A:172:ARG:HD2	2.08	0.68
1:B:267:THR:HG23	1:B:272:SER:HB3	1.75	0.67
1:B:126:PRO:HG2	1:B:158:PRO:HB3	1.75	0.67
1:B:104:LYS:O	1:B:107:ALA:HB3	1.95	0.67
1:A:159:ASN:OD1	1:A:162:GLU:HG3	1.95	0.67
1:A:116:ASP:C	1:A:118:PRO:HD3	2.16	0.66
1:A:267:THR:HG22	1:A:276:ILE:HG13	1.78	0.66
1:A:29:SER:CB	1:A:275:LEU:HB2	2.26	0.66
1:B:18:ILE:HG22	1:B:20:ALA:H	1.60	0.66
1:A:110:LEU:O	1:A:113:LEU:HB2	1.96	0.66
1:A:178:ILE:O	1:A:182:LYS:HG2	1.96	0.66
1:B:167:THR:CG2	1:B:184:LEU:HD11	2.26	0.66
1:A:86:LEU:HD22	1:A:89:LEU:HD22	1.77	0.66
1:A:234:LEU:HD11	1:A:263:VAL:HG21	1.77	0.65
1:B:183:SER:O	1:B:184:LEU:HG	1.96	0.65
1:B:278:PRO:HB2	1:B:279:PRO:HD2	1.77	0.65
1:B:242:GLY:O	1:B:247:LYS:HB2	1.96	0.65
1:A:97:MET:CE	1:A:103:ILE:HG12	2.27	0.65
1:A:19:VAL:HG23	1:A:89:LEU:CD1	2.27	0.64
1:A:185:LEU:HD13	1:A:213:ALA:HA	1.79	0.64
1:B:99:THR:OG1	1:B:102:GLN:HG3	1.98	0.64
1:B:209:VAL:HG22	1:B:218:VAL:HG22	1.78	0.64
1:A:19:VAL:HG12	1:A:19:VAL:O	1.97	0.63
1:B:76:TYR:O	1:B:79:ALA:HB3	1.98	0.63
1:B:94:THR:OG1	1:B:124:VAL:HG13	1.99	0.63
1:B:86:LEU:HD22	1:B:89:LEU:HD22	1.79	0.63
1:B:22:GLN:HB3	1:B:95:GLY:HA3	1.81	0.63
1:A:97:MET:HG3	1:A:103:ILE:HD11	1.82	0.62
1:A:36:VAL:N	1:A:37:PRO:HD2	2.15	0.62
1:A:146:ARG:HD3	1:A:166:LEU:O	1.99	0.62
1:B:34:ILE:C	1:B:37:PRO:HD2	2.19	0.62
1:B:205:GLU:HG3	1:B:221:HIS:O	1.99	0.62
1:A:160:ILE:O	1:A:164:GLU:HG3	2.00	0.62
1:B:36:VAL:O	1:B:40:LYS:HB2	1.99	0.62
1:B:22:GLN:OE1	1:B:31:GLY:HA2	2.00	0.61
1:B:256:ALA:O	1:B:260:VAL:HG23	2.00	0.61
1:B:280:LEU:HD13	1:B:280:LEU:N	2.11	0.61
1:B:157:THR:HA	1:B:193:VAL:O	2.00	0.61
1:A:21:VAL:HG22	1:A:49:VAL:HB	1.81	0.60

Continued on next page...

Continued from previous page...

Atom-1	Atom-2	Interatomic distance (Å)	Clash overlap (Å)
1:B:191:TRP:CE3	1:B:193:VAL:HG23	2.35	0.60
1:B:94:THR:HG22	1:B:106:LEU:HD21	1.83	0.60
1:B:224:VAL:HG12	1:B:225:LYS:H	1.66	0.60
1:A:156:ILE:HG13	1:A:158:PRO:HD3	1.83	0.60
1:B:21:VAL:HG22	1:B:49:VAL:HB	1.84	0.60
1:B:255:ARG:HG2	1:B:255:ARG:HH11	1.66	0.60
1:A:12:ARG:HH21	1:B:271:GLU:HB3	1.66	0.60
1:B:18:ILE:HG22	1:B:20:ALA:N	2.17	0.60
1:B:150:LEU:HB3	1:B:151:PRO:HD3	1.84	0.59
1:A:29:SER:HB3	1:A:275:LEU:HB2	1.85	0.59
1:B:159:ASN:ND2	1:B:162:GLU:HG3	2.17	0.59
1:B:37:PRO:O	1:B:41:GLN:HG3	2.03	0.59
1:A:159:ASN:HD22	1:A:161:PHE:N	1.97	0.59
1:B:163:LEU:O	1:B:167:THR:HG23	2.03	0.59
1:A:130:ASP:CG	1:A:131:ILE:H	2.06	0.59
1:A:49:VAL:HG21	1:A:77:LEU:HD23	1.85	0.58
1:A:135:ILE:C	1:A:137:VAL:H	2.05	0.58
1:A:259:ARG:O	1:A:262:GLU:HB3	2.03	0.58
1:A:267:THR:HG22	1:A:276:ILE:CG1	2.34	0.58
1:A:97:MET:HE2	1:A:103:ILE:HG12	1.85	0.58
1:A:266:TYR:O	1:A:270:HIS:HB2	2.02	0.58
1:A:266:TYR:CD1	1:A:278:PRO:HB3	2.38	0.58
1:A:56:ASN:HD21	1:A:63:PHE:N	2.01	0.58
1:B:18:ILE:CG2	1:B:19:VAL:N	2.66	0.58
1:B:240:ILE:HG23	1:B:241:SER:N	2.17	0.58
1:B:31:GLY:O	1:B:34:ILE:HG22	2.04	0.58
1:A:134:GLY:HA3	1:A:161:PHE:CE1	2.39	0.57
1:A:205:GLU:HB2	1:A:223:ARG:NH2	2.19	0.57
1:A:34:ILE:O	1:A:37:PRO:HG2	2.03	0.57
1:A:83:ARG:HE	1:A:83:ARG:HA	1.69	0.57
1:B:19:VAL:HG12	1:B:19:VAL:O	2.03	0.57
1:B:259:ARG:HD3	1:B:262:GLU:OE1	2.05	0.57
1:B:264:MET:HE1	3:B:1028:HOH:O	2.03	0.57
1:B:240:ILE:CG2	1:B:241:SER:N	2.68	0.56
1:A:174:LEU:HD21	1:A:209:VAL:HG21	1.86	0.56
1:B:14:LEU:O	1:B:85:ALA:HB1	2.05	0.56
1:B:278:PRO:CB	1:B:279:PRO:HD2	2.35	0.56
1:A:114:ARG:HB3	1:A:114:ARG:NH1	2.21	0.56
1:A:150:LEU:C	1:A:152:LEU:H	2.09	0.56
1:A:19:VAL:HG23	1:A:89:LEU:HD13	1.86	0.56
1:A:159:ASN:HD21	1:A:162:GLU:H	1.53	0.56

Continued on next page...

Continued from previous page...

Atom-1	Atom-2	Interatomic distance (Å)	Clash overlap (Å)
1:A:278:PRO:HB2	1:A:279:PRO:CD	2.35	0.55
1:B:114:ARG:HG3	1:B:114:ARG:HH11	1.69	0.55
1:B:19:VAL:O	1:B:21:VAL:HG23	2.06	0.55
1:A:138:LYS:O	1:A:141:LEU:HG	2.05	0.55
1:A:241:SER:O	1:A:245:LYS:HG3	2.07	0.55
1:B:159:ASN:C	1:B:159:ASN:HD22	2.10	0.55
1:B:265:ARG:HG2	1:B:265:ARG:HH11	1.72	0.55
1:A:83:ARG:HA	1:A:83:ARG:NE	2.22	0.55
1:A:114:ARG:HB3	1:A:114:ARG:HH11	1.70	0.55
1:B:260:VAL:O	1:B:264:MET:HG3	2.08	0.54
1:A:271:GLU:HA	1:B:12:ARG:HH12	1.73	0.54
1:A:29:SER:HB3	1:A:34:ILE:HD13	1.89	0.54
1:B:92:VAL:HG11	1:B:110:LEU:HD21	1.88	0.54
1:B:116:ASP:OD2	1:B:116:ASP:N	2.39	0.54
1:A:12:ARG:NH2	1:B:271:GLU:HB3	2.22	0.54
1:B:121:LEU:C	1:B:121:LEU:HD23	2.27	0.54
1:A:61:ASP:HB3	1:B:83:ARG:HH22	1.72	0.54
1:A:172:ARG:HD2	1:A:172:ARG:H	1.71	0.54
1:A:271:GLU:HG3	1:B:12:ARG:NH1	2.23	0.54
1:B:142:PRO:HD2	1:B:143:GLU:OE2	2.07	0.54
1:B:241:SER:O	1:B:245:LYS:HG3	2.08	0.54
1:A:159:ASN:HD22	1:A:159:ASN:C	2.12	0.53
1:A:238:GLN:HB3	1:A:256:ALA:CB	2.38	0.53
1:B:233:ASP:OD2	2:B:1005:PXL:OP4	2.24	0.53
1:A:16:ALA:HA	1:A:45:ASN:HB2	1.91	0.53
1:A:94:THR:OG1	1:A:124:VAL:HG13	2.09	0.53
1:B:29:SER:HB3	1:B:34:ILE:HD13	1.90	0.53
1:B:249:LEU:O	1:B:252:ALA:N	2.42	0.53
1:A:101:SER:O	1:A:105:ILE:HG13	2.10	0.52
1:B:16:ALA:HB3	1:B:47:PHE:CD1	2.44	0.52
1:A:234:LEU:HD13	1:A:260:VAL:HA	1.89	0.52
1:B:106:LEU:HD12	1:B:106:LEU:O	2.08	0.52
1:A:234:LEU:HB3	1:A:260:VAL:HG22	1.91	0.52
1:A:265:ARG:HH11	1:A:265:ARG:HG2	1.75	0.52
1:A:128:ILE:HD12	1:A:142:PRO:HG3	1.92	0.51
1:B:197:ALA:HA	1:B:205:GLU:O	2.10	0.51
1:A:18:ILE:HG22	1:A:19:VAL:N	2.25	0.51
1:A:19:VAL:HG11	1:A:109:TRP:CH2	2.46	0.51
1:B:73:PHE:CE2	1:B:102:GLN:HB3	2.46	0.51
1:B:99:THR:OG1	1:B:100:ALA:N	2.42	0.51
1:A:27:TYR:OH	1:B:13:ALA:HB1	2.10	0.51

Continued on next page...

Continued from previous page...

Atom-1	Atom-2	Interatomic distance (Å)	Clash overlap (Å)
1:A:74:SER:HB2	1:A:105:ILE:HD13	1.93	0.51
1:A:110:LEU:HD13	1:A:122:ILE:HD13	1.90	0.51
1:B:107:ALA:O	1:B:108:GLU:C	2.49	0.51
1:A:149:LEU:O	1:A:149:LEU:HG	2.11	0.51
1:B:79:ALA:O	1:B:81:GLN:N	2.44	0.51
1:B:267:THR:CG2	1:B:272:SER:HB3	2.39	0.51
1:A:159:ASN:ND2	1:A:161:PHE:N	2.56	0.51
1:A:265:ARG:HA	1:A:268:GLN:OE1	2.10	0.51
1:A:17:ASP:O	1:A:89:LEU:HD12	2.11	0.51
1:B:24:GLN:O	1:B:53:LEU:HD12	2.11	0.51
1:B:159:ASN:HD22	1:B:161:PHE:N	2.08	0.51
1:A:117:HIS:N	1:A:118:PRO:HD3	2.26	0.51
1:A:267:THR:HG21	1:A:276:ILE:N	2.26	0.51
1:B:198:SER:O	1:B:204:GLN:HA	2.11	0.51
1:B:204:GLN:HE21	1:B:223:ARG:HD2	1.76	0.51
1:A:146:ARG:HH11	1:A:146:ARG:HB2	1.77	0.50
1:A:174:LEU:O	1:A:178:ILE:HG13	2.11	0.50
1:A:113:LEU:HD13	1:A:120:LEU:HD11	1.92	0.50
1:A:167:THR:HG22	1:A:184:LEU:HD11	1.93	0.50
1:A:72:TRP:CZ2	1:B:66:GLY:HA3	2.45	0.50
1:A:83:ARG:NH1	1:B:60:TYR:HB3	2.27	0.50
1:A:247:LYS:CE	1:A:255:ARG:HE	2.25	0.50
1:A:267:THR:CG2	1:A:276:ILE:N	2.75	0.50
1:B:144:ALA:O	1:B:148:TYR:HB2	2.11	0.50
1:A:26:VAL:HG12	1:A:26:VAL:O	2.12	0.50
1:A:62:THR:O	1:A:63:PHE:CD2	2.65	0.50
1:A:234:LEU:HD11	1:A:263:VAL:CB	2.42	0.49
1:B:69:PRO:O	1:B:72:TRP:N	2.45	0.49
1:A:30:VAL:O	1:A:33:SER:HB2	2.13	0.49
1:A:52:VAL:HA	1:A:67:ALA:HA	1.94	0.49
1:A:173:ASP:HB2	1:A:176:SER:OG	2.12	0.49
1:A:247:LYS:NZ	1:A:255:ARG:HE	2.10	0.49
1:B:160:ILE:O	1:B:164:GLU:HG3	2.12	0.49
1:A:35:ALA:O	1:A:39:ILE:HG13	2.12	0.49
1:B:36:VAL:N	1:B:37:PRO:CD	2.75	0.49
1:B:255:ARG:HG2	1:B:255:ARG:NH1	2.26	0.49
1:B:24:GLN:NE2	1:B:53:LEU:HD11	2.27	0.49
1:A:94:THR:CG2	1:A:106:LEU:HD21	2.42	0.49
1:A:43:GLY:C	1:A:44:LEU:HG	2.33	0.49
1:A:238:GLN:HB3	1:A:256:ALA:HB1	1.94	0.49
1:B:150:LEU:CB	1:B:151:PRO:HD3	2.43	0.49

Continued on next page...

Continued from previous page...

Atom-1	Atom-2	Interatomic distance (Å)	Clash overlap (Å)
1:A:238:GLN:CG	1:A:256:ALA:HA	2.43	0.48
1:A:219:ILE:H	1:A:219:ILE:HD12	1.78	0.48
1:B:36:VAL:HB	1:B:37:PRO:HD3	1.94	0.48
1:A:160:ILE:HG23	1:A:196:SER:HB2	1.93	0.48
1:A:237:ALA:O	1:A:240:ILE:HG22	2.14	0.48
1:A:129:GLY:HA3	1:A:161:PHE:CD1	2.49	0.48
1:A:219:ILE:HD11	1:A:250:THR:HG23	1.94	0.48
1:B:16:ALA:HB3	1:B:47:PHE:CE1	2.49	0.48
1:B:104:LYS:O	1:B:108:GLU:HG3	2.13	0.48
1:B:141:LEU:N	1:B:142:PRO:CD	2.77	0.48
1:B:197:ALA:HB1	1:B:204:GLN:HB2	1.95	0.48
1:B:224:VAL:HG12	1:B:225:LYS:N	2.28	0.48
1:A:55:SER:OG	1:A:63:PHE:HA	2.13	0.48
1:A:167:THR:HG22	1:A:184:LEU:CD1	2.44	0.48
1:B:69:PRO:HD2	1:B:72:TRP:CE3	2.49	0.48
1:A:62:THR:OG1	1:B:83:ARG:NH1	2.46	0.48
1:A:110:LEU:HD23	1:A:113:LEU:HD12	1.95	0.48
1:A:234:LEU:HD11	1:A:263:VAL:CG2	2.41	0.48
1:A:240:ILE:HG13	1:A:244:LEU:HD12	1.94	0.48
1:B:113:LEU:O	1:B:115:LYS:N	2.47	0.47
1:A:150:LEU:N	1:A:151:PRO:CD	2.77	0.47
1:B:240:ILE:HG13	1:B:244:LEU:HD13	1.96	0.47
1:B:69:PRO:O	1:B:70:ASP:C	2.52	0.47
1:B:278:PRO:CB	1:B:279:PRO:CD	2.92	0.47
1:A:159:ASN:ND2	1:A:159:ASN:C	2.68	0.47
1:B:99:THR:HG1	1:B:102:GLN:H	1.62	0.47
1:B:174:LEU:HD22	1:B:178:ILE:CD1	2.32	0.47
1:A:93:THR:HG22	1:A:123:MET:HB3	1.96	0.47
1:A:121:LEU:HD23	1:A:240:ILE:CD1	2.44	0.47
1:A:247:LYS:HE3	1:A:251:ASP:OD2	2.14	0.47
1:B:32:ASN:ND2	1:B:48:ALA:HB1	2.30	0.47
1:A:117:HIS:N	1:A:117:HIS:ND1	2.62	0.47
1:A:137:VAL:HB	1:A:141:LEU:HD12	1.97	0.47
1:A:138:LYS:HB3	1:A:140:ASP:OD1	2.14	0.47
1:A:150:LEU:H	1:A:151:PRO:CD	2.27	0.47
1:B:159:ASN:HD21	1:B:162:GLU:HG3	1.80	0.46
1:B:77:LEU:O	1:B:78:ARG:C	2.53	0.46
1:A:179:ALA:O	1:A:182:LYS:N	2.48	0.46
1:A:97:MET:HE3	1:A:103:ILE:HG12	1.95	0.46
1:B:160:ILE:HG21	1:B:172:ARG:NH1	2.31	0.46
1:A:167:THR:OG1	1:A:169:LYS:HB2	2.16	0.46

Continued on next page...

Continued from previous page...

Atom-1	Atom-2	Interatomic distance (Å)	Clash overlap (Å)
1:A:126:PRO:O	1:A:127:VAL:C	2.54	0.46
1:A:159:ASN:H	1:A:162:GLU:HB2	1.80	0.46
1:A:271:GLU:HG3	1:B:12:ARG:HH11	1.81	0.46
1:B:30:VAL:HG11	1:B:57:THR:CG2	2.45	0.46
1:A:109:TRP:CZ3	1:A:113:LEU:HD11	2.51	0.46
1:A:267:THR:CG2	1:A:276:ILE:H	2.29	0.46
1:B:159:ASN:ND2	1:B:159:ASN:C	2.69	0.46
1:A:27:TYR:CE1	1:B:14:LEU:HB2	2.51	0.46
1:B:16:ALA:HB1	1:B:46:VAL:HA	1.98	0.46
1:B:27:TYR:C	1:B:27:TYR:CD2	2.88	0.45
1:B:91:ALA:O	1:B:92:VAL:CG2	2.51	0.45
1:B:107:ALA:O	1:B:110:LEU:N	2.49	0.45
1:B:143:GLU:CD	1:B:143:GLU:N	2.64	0.45
1:B:280:LEU:HD22	1:B:280:LEU:O	2.16	0.45
1:A:94:THR:HG22	1:A:106:LEU:HD21	1.98	0.45
1:B:206:MET:O	1:B:207:GLN:O	2.34	0.45
1:A:99:THR:OG1	1:A:102:GLN:HG3	2.16	0.45
1:B:114:ARG:HG3	1:B:114:ARG:NH1	2.31	0.45
1:B:278:PRO:HB2	1:B:279:PRO:CD	2.46	0.45
1:B:235:PHE:HB2	1:B:260:VAL:HG21	1.99	0.45
1:A:63:PHE:O	1:A:63:PHE:CG	2.69	0.45
1:B:206:MET:O	1:B:207:GLN:C	2.55	0.45
1:B:206:MET:HB2	1:B:221:HIS:HB2	1.98	0.45
1:A:97:MET:HG3	1:A:103:ILE:CG1	2.47	0.44
1:A:143:GLU:OE2	1:A:143:GLU:HA	2.17	0.44
1:A:62:THR:HG21	1:B:82:GLU:OE2	2.17	0.44
1:A:60:TYR:HB3	1:A:61:ASP:H	1.46	0.44
1:A:150:LEU:O	1:A:152:LEU:N	2.50	0.44
1:B:159:ASN:ND2	1:B:161:PHE:N	2.66	0.44
1:A:56:ASN:HD21	1:A:63:PHE:CA	2.31	0.44
1:A:173:ASP:HB3	1:A:175:ASP:OD1	2.17	0.44
1:B:158:PRO:HB2	1:B:162:GLU:HB2	2.00	0.44
1:A:56:ASN:HD21	1:A:63:PHE:H	1.65	0.44
1:A:256:ALA:O	1:A:260:VAL:HG23	2.16	0.44
1:A:262:GLU:O	1:A:265:ARG:N	2.49	0.44
1:A:110:LEU:O	1:A:113:LEU:N	2.51	0.44
1:B:113:LEU:C	1:B:115:LYS:H	2.21	0.44
1:B:180:ALA:HA	1:B:183:SER:OG	2.18	0.44
1:A:130:ASP:CG	1:A:131:ILE:N	2.71	0.44
1:A:175:ASP:O	1:A:176:SER:C	2.56	0.44
1:B:182:LYS:HA	1:B:185:LEU:HD11	2.00	0.44

Continued on next page...

Continued from previous page...

Atom-1	Atom-2	Interatomic distance (Å)	Clash overlap (Å)
1:A:129:GLY:HA2	1:A:134:GLY:HA2	1.99	0.43
1:A:271:GLU:CG	1:B:12:ARG:HH11	2.31	0.43
1:B:229:LYS:N	1:B:229:LYS:HD2	2.33	0.43
1:B:181:ALA:HB3	1:B:211:VAL:HG11	2.00	0.43
1:B:87:ARG:NH1	1:B:87:ARG:HG2	2.33	0.43
1:A:97:MET:HG3	1:A:103:ILE:CD1	2.46	0.43
1:B:117:HIS:O	1:B:120:LEU:HB2	2.18	0.43
1:B:269:GLN:C	1:B:271:GLU:H	2.20	0.43
1:A:22:GLN:O	1:A:50:PRO:HA	2.17	0.43
1:B:58:PRO:HA	1:B:63:PHE:CD1	2.53	0.43
1:A:224:VAL:HG21	1:A:268:GLN:NE2	2.30	0.43
1:B:52:VAL:HA	1:B:67:ALA:HA	2.01	0.43
1:B:101:SER:O	1:B:105:ILE:HG13	2.19	0.43
1:B:171:CYS:CB	1:B:176:SER:HB3	2.49	0.43
1:B:234:LEU:O	1:B:237:ALA:HB3	2.18	0.43
1:B:254:HIS:O	1:B:257:GLY:N	2.52	0.43
1:A:265:ARG:HH11	1:A:265:ARG:CG	2.31	0.43
1:B:150:LEU:HD11	1:B:166:LEU:HD21	2.00	0.43
1:A:31:GLY:O	1:A:34:ILE:HG22	2.19	0.42
1:A:117:HIS:O	1:A:120:LEU:HB2	2.19	0.42
1:A:32:ASN:CG	1:A:48:ALA:HB1	2.39	0.42
1:B:146:ARG:O	1:B:151:PRO:HD3	2.20	0.42
1:B:96:TYR:N	1:B:127:VAL:HG21	2.34	0.42
1:B:177:ALA:O	1:B:180:ALA:HB3	2.19	0.42
1:A:128:ILE:CD1	1:A:142:PRO:HG3	2.50	0.42
1:B:223:ARG:HG2	1:B:224:VAL:N	2.35	0.42
1:B:277:LEU:HA	1:B:278:PRO:HD3	1.73	0.42
1:A:212:THR:HG22	1:A:213:ALA:H	1.84	0.42
1:B:109:TRP:O	1:B:110:LEU:C	2.57	0.42
1:A:64:TYR:HH	1:B:82:GLU:CD	2.23	0.42
1:B:83:ARG:HE	1:B:83:ARG:CA	2.28	0.42
1:B:149:LEU:O	1:B:150:LEU:C	2.58	0.42
1:A:36:VAL:N	1:A:37:PRO:CD	2.82	0.42
1:A:238:GLN:HB3	1:A:256:ALA:HA	2.01	0.42
1:B:191:TRP:CZ3	1:B:193:VAL:HG23	2.54	0.42
1:A:219:ILE:HG22	1:A:220:SER:N	2.34	0.42
1:B:79:ALA:O	1:B:80:LEU:C	2.58	0.42
1:B:95:GLY:O	1:B:96:TYR:C	2.58	0.42
1:B:149:LEU:HD12	1:B:149:LEU:HA	1.82	0.42
1:A:90:ARG:NH2	1:A:244:LEU:O	2.52	0.41
1:B:171:CYS:HB3	1:B:176:SER:HB3	2.01	0.41

Continued on next page...

Continued from previous page...

Atom-1	Atom-2	Interatomic distance (Å)	Clash overlap (Å)
1:B:237:ALA:O	1:B:240:ILE:HG22	2.20	0.41
1:B:261:LEU:O	1:B:265:ARG:HG3	2.20	0.41
1:A:128:ILE:HD12	1:A:142:PRO:CG	2.51	0.41
1:A:135:ILE:C	1:A:137:VAL:N	2.72	0.41
1:A:146:ARG:HB2	1:A:146:ARG:NH1	2.34	0.41
1:A:171:CYS:HB2	1:A:172:ARG:H	1.56	0.41
1:B:145:TYR:O	1:B:150:LEU:HB2	2.20	0.41
1:A:75:GLY:O	1:A:79:ALA:N	2.48	0.41
1:A:234:LEU:HD11	1:A:263:VAL:HG11	2.02	0.41
1:A:262:GLU:O	1:A:263:VAL:C	2.59	0.41
1:B:211:VAL:HG12	1:B:211:VAL:O	2.20	0.41
1:A:41:GLN:C	1:A:43:GLY:H	2.24	0.41
1:B:83:ARG:O	1:B:84:ASP:HB3	2.21	0.41
1:B:226:THR:HG23	3:B:1028:HOH:O	2.20	0.41
1:B:265:ARG:O	1:B:268:GLN:N	2.54	0.41
1:A:37:PRO:O	1:A:41:GLN:HG3	2.20	0.41
1:A:51:THR:HG21	1:A:97:MET:SD	2.61	0.41
1:A:179:ALA:O	1:A:182:LYS:HB2	2.21	0.41
1:B:68:ILE:HA	1:B:69:PRO:HD3	1.79	0.41
1:B:140:ASP:O	1:B:143:GLU:HG2	2.21	0.41
1:B:238:GLN:O	1:B:239:LEU:C	2.60	0.41
1:A:276:ILE:O	1:A:278:PRO:HD3	2.21	0.41
1:B:87:ARG:HG2	1:B:87:ARG:HH11	1.85	0.41
1:A:76:TYR:O	1:A:77:LEU:C	2.59	0.40
1:A:150:LEU:C	1:A:152:LEU:N	2.73	0.40
1:A:178:ILE:HD13	1:A:216:VAL:HG11	2.02	0.40
1:B:93:THR:HG22	1:B:123:MET:HB3	2.03	0.40
1:B:194:VAL:HG13	1:B:209:VAL:HB	2.04	0.40
1:A:65:GLY:HA2	1:B:72:TRP:CG	2.57	0.40
1:A:195:THR:O	1:A:196:SER:HB2	2.22	0.40
1:B:114:ARG:O	1:B:114:ARG:HG2	2.21	0.40
1:A:68:ILE:HA	1:A:69:PRO:HD3	1.95	0.40
1:A:249:LEU:O	1:A:250:THR:C	2.60	0.40
1:B:89:LEU:HG	1:B:90:ARG:N	2.36	0.40
1:B:207:GLN:HE21	1:B:207:GLN:HB3	1.53	0.40

There are no symmetry-related clashes.

5.3 Torsion angles [i](#)

5.3.1 Protein backbone [i](#)

In the following table, the Percentiles column shows the percent Ramachandran outliers of the chain as a percentile score with respect to all X-ray entries followed by that with respect to entries of similar resolution.

The Analysed column shows the number of residues for which the backbone conformation was analysed, and the total number of residues.

Mol	Chain	Analysed	Favoured	Allowed	Outliers	Percentiles	
1	A	259/283 (92%)	189 (73%)	55 (21%)	15 (6%)	1	13
1	B	255/283 (90%)	179 (70%)	65 (26%)	11 (4%)	2	20
All	All	514/566 (91%)	368 (72%)	120 (23%)	26 (5%)	2	15

All (26) Ramachandran outliers are listed below:

Mol	Chain	Res	Type
1	A	60	TYR
1	A	127	VAL
1	A	170	ASN
1	A	215	SER
1	B	92	VAL
1	B	207	GLN
1	B	249	LEU
1	A	63	PHE
1	A	126	PRO
1	A	249	LEU
1	B	79	ALA
1	B	80	LEU
1	B	114	ARG
1	A	130	ASP
1	A	186	SER
1	B	127	VAL
1	A	71	GLU
1	A	279	PRO
1	B	174	LEU
1	B	186	SER
1	A	151	PRO
1	B	278	PRO
1	A	34	ILE
1	A	263	VAL
1	B	151	PRO

Continued on next page...

Continued from previous page...

Mol	Chain	Res	Type
1	A	128	ILE

5.3.2 Protein sidechains [i](#)

In the following table, the Percentiles column shows the percent sidechain outliers of the chain as a percentile score with respect to all X-ray entries followed by that with respect to entries of similar resolution.

The Analysed column shows the number of residues for which the sidechain conformation was analysed, and the total number of residues.

Mol	Chain	Analysed	Rotameric	Outliers	Percentiles	
1	A	221/238 (93%)	196 (89%)	25 (11%)	6	25
1	B	217/238 (91%)	199 (92%)	18 (8%)	11	40
All	All	438/476 (92%)	395 (90%)	43 (10%)	8	31

All (43) residues with a non-rotameric sidechain are listed below:

Mol	Chain	Res	Type
1	A	23	SER
1	A	25	VAL
1	A	30	VAL
1	A	56	ASN
1	A	60	TYR
1	A	63	PHE
1	A	83	ARG
1	A	117	HIS
1	A	120	LEU
1	A	128	ILE
1	A	131	ILE
1	A	159	ASN
1	A	171	CYS
1	A	189	LEU
1	A	206	MET
1	A	214	ASP
1	A	215	SER
1	A	221	HIS
1	A	234	LEU
1	A	249	LEU
1	A	259	ARG
1	A	270	HIS

Continued on next page...

Continued from previous page...

Mol	Chain	Res	Type
1	A	271	GLU
1	A	273	ASP
1	A	277	LEU
1	B	40	LYS
1	B	70	ASP
1	B	83	ARG
1	B	87	ARG
1	B	106	LEU
1	B	116	ASP
1	B	141	LEU
1	B	149	LEU
1	B	159	ASN
1	B	171	CYS
1	B	175	ASP
1	B	188	THR
1	B	206	MET
1	B	214	ASP
1	B	234	LEU
1	B	249	LEU
1	B	259	ARG
1	B	280	LEU

Sometimes sidechains can be flipped to improve hydrogen bonding and reduce clashes. All (17) such sidechains are listed below:

Mol	Chain	Res	Type
1	A	22	GLN
1	A	24	GLN
1	A	159	ASN
1	A	207	GLN
1	A	221	HIS
1	A	254	HIS
1	B	8	ASN
1	B	24	GLN
1	B	42	ASN
1	B	59	HIS
1	B	154	GLN
1	B	159	ASN
1	B	204	GLN
1	B	207	GLN
1	B	221	HIS
1	B	238	GLN
1	B	254	HIS

5.3.3 RNA [i](#)

There are no RNA molecules in this entry.

5.4 Non-standard residues in protein, DNA, RNA chains [i](#)

There are no non-standard protein/DNA/RNA residues in this entry.

5.5 Carbohydrates [i](#)

There are no monosaccharides in this entry.

5.6 Ligand geometry [i](#)

2 ligands are modelled in this entry.

In the following table, the Counts columns list the number of bonds (or angles) for which Mogul statistics could be retrieved, the number of bonds (or angles) that are observed in the model and the number of bonds (or angles) that are defined in the Chemical Component Dictionary. The Link column lists molecule types, if any, to which the group is linked. The Z score for a bond length (or angle) is the number of standard deviations the observed value is removed from the expected value. A bond length (or angle) with $|Z| > 2$ is considered an outlier worth inspection. RMSZ is the root-mean-square of all Z scores of the bond lengths (or angles).

Mol	Type	Chain	Res	Link	Bond lengths			Bond angles		
					Counts	RMSZ	# Z > 2	Counts	RMSZ	# Z > 2
2	PXL	A	1003	-	12,12,12	3.25	6 (50%)	15,16,16	1.64	4 (26%)
2	PXL	B	1005	-	12,12,12	3.45	8 (66%)	15,16,16	1.39	3 (20%)

In the following table, the Chirals column lists the number of chiral outliers, the number of chiral centers analysed, the number of these observed in the model and the number defined in the Chemical Component Dictionary. Similar counts are reported in the Torsion and Rings columns. '-' means no outliers of that kind were identified.

Mol	Type	Chain	Res	Link	Chirals	Torsions	Rings
2	PXL	A	1003	-	-	2/4/4/4	0/1/1/1
2	PXL	B	1005	-	-	2/4/4/4	0/1/1/1

All (14) bond length outliers are listed below:

Mol	Chain	Res	Type	Atoms	Z	Observed(Å)	Ideal(Å)
2	B	1005	PXL	C3-C2	5.91	1.46	1.40

Continued on next page...

Continued from previous page...

Mol	Chain	Res	Type	Atoms	Z	Observed(Å)	Ideal(Å)
2	B	1005	PXL	C2-N1	4.94	1.43	1.33
2	A	1003	PXL	C3-C2	4.87	1.45	1.40
2	A	1003	PXL	C4-C3	4.84	1.48	1.40
2	A	1003	PXL	C2-N1	4.64	1.42	1.33
2	A	1003	PXL	C4-C4A	4.46	1.56	1.46
2	B	1005	PXL	C4-C4A	4.40	1.56	1.46
2	B	1005	PXL	C4-C3	4.18	1.47	1.40
2	B	1005	PXL	C4-C5	3.83	1.46	1.42
2	B	1005	PXL	C6-N1	3.78	1.42	1.34
2	A	1003	PXL	C6-N1	3.78	1.42	1.34
2	A	1003	PXL	C6-C5	3.36	1.44	1.37
2	B	1005	PXL	C6-C5	2.91	1.43	1.37
2	B	1005	PXL	C2A-C2	2.01	1.53	1.50

All (7) bond angle outliers are listed below:

Mol	Chain	Res	Type	Atoms	Z	Observed(°)	Ideal(°)
2	A	1003	PXL	O4A-C4A-C4	-3.18	117.99	124.91
2	A	1003	PXL	C4-C3-C2	-2.99	118.34	120.19
2	A	1003	PXL	C5-C6-N1	-2.62	119.46	123.82
2	B	1005	PXL	O4A-C4A-C4	-2.61	119.22	124.91
2	B	1005	PXL	C5-C6-N1	-2.41	119.81	123.82
2	A	1003	PXL	C3-C4-C4A	2.10	122.87	119.90
2	B	1005	PXL	C4-C3-C2	-2.07	118.91	120.19

There are no chirality outliers.

All (4) torsion outliers are listed below:

Mol	Chain	Res	Type	Atoms
2	B	1005	PXL	C6-C5-C5A-OP4
2	A	1003	PXL	C6-C5-C5A-OP4
2	A	1003	PXL	C4-C5-C5A-OP4
2	B	1005	PXL	C4-C5-C5A-OP4

There are no ring outliers.

1 monomer is involved in 2 short contacts:

Mol	Chain	Res	Type	Clashes	Symm-Clashes
2	B	1005	PXL	2	0

5.7 Other polymers [i](#)

There are no such residues in this entry.

5.8 Polymer linkage issues [i](#)

There are no chain breaks in this entry.

6 Fit of model and data [i](#)

6.1 Protein, DNA and RNA chains [i](#)

In the following table, the column labelled ‘#RSRZ > 2’ contains the number (and percentage) of RSRZ outliers, followed by percent RSRZ outliers for the chain as percentile scores relative to all X-ray entries and entries of similar resolution. The OWAB column contains the minimum, median, 95th percentile and maximum values of the occupancy-weighted average B-factor per residue. The column labelled ‘Q < 0.9’ lists the number of (and percentage) of residues with an average occupancy less than 0.9.

Mol	Chain	Analysed	<RSRZ>	#RSRZ>2	OWAB(Å ²)	Q<0.9
1	A	263/283 (92%)	-0.32	3 (1%) 80 69	8, 28, 67, 95	0
1	B	261/283 (92%)	-0.30	2 (0%) 86 78	8, 30, 65, 95	0
All	All	524/566 (92%)	-0.31	5 (0%) 82 72	8, 29, 66, 95	0

All (5) RSRZ outliers are listed below:

Mol	Chain	Res	Type	RSRZ
1	A	132	ASP	4.3
1	B	8	ASN	4.1
1	A	222	SER	3.3
1	A	172	ARG	2.5
1	B	118	PRO	2.1

6.2 Non-standard residues in protein, DNA, RNA chains [i](#)

There are no non-standard protein/DNA/RNA residues in this entry.

6.3 Carbohydrates [i](#)

There are no monosaccharides in this entry.

6.4 Ligands [i](#)

In the following table, the Atoms column lists the number of modelled atoms in the group and the number defined in the chemical component dictionary. The B-factors column lists the minimum, median, 95th percentile and maximum values of B factors of atoms in the group. The column labelled ‘Q < 0.9’ lists the number of atoms with occupancy less than 0.9.

Mol	Type	Chain	Res	Atoms	RSCC	RSR	B-factors(\AA^2)	Q<0.9
2	PXL	A	1003	12/12	0.82	0.42	40,56,60,62	0
2	PXL	B	1005	12/12	0.87	0.28	27,57,63,75	0

6.5 Other polymers [i](#)

There are no such residues in this entry.