



## Full wwPDB EM Validation Report ⓘ

Jan 7, 2023 – 01:39 PM EST

PDB ID : 8DDQ  
EMDB ID : EMD-27338  
Title : cryo-EM structure of TRPM3 ion channel in the presence of soluble Gbg,  
focused on channel  
Authors : Zhao, C.; MacKinnon, R.  
Deposited on : 2022-06-18  
Resolution : 2.70 Å(reported)

This is a Full wwPDB EM Validation Report for a publicly released PDB entry.

We welcome your comments at [validation@mail.wwpdb.org](mailto:validation@mail.wwpdb.org)

A user guide is available at

<https://www.wwpdb.org/validation/2017/EMValidationReportHelp>

with specific help available everywhere you see the ⓘ symbol.

The types of validation reports are described at

<http://www.wwpdb.org/validation/2017/FAQs#types>.

---

The following versions of software and data (see [references ⓘ](#)) were used in the production of this report:

EMDB validation analysis : 0.0.1.dev43  
Mogul : 1.8.5 (274361), CSD as541be (2020)  
MolProbity : 4.02b-467  
buster-report : 1.1.7 (2018)  
Percentile statistics : 20191225.v01 (using entries in the PDB archive December 25th 2019)  
MapQ : 1.9.9  
Ideal geometry (proteins) : Engh & Huber (2001)  
Ideal geometry (DNA, RNA) : Parkinson et al. (1996)  
Validation Pipeline (wwPDB-VP) : 2.31.2

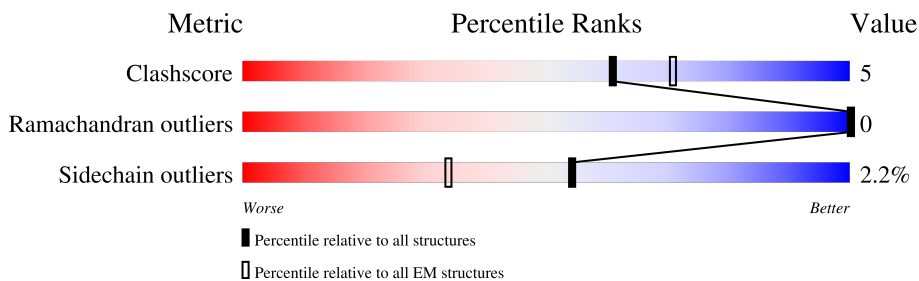
# 1 Overall quality at a glance

The following experimental techniques were used to determine the structure:

*ELECTRON MICROSCOPY*

The reported resolution of this entry is 2.70 Å.

Percentile scores (ranging between 0-100) for global validation metrics of the entry are shown in the following graphic. The table shows the number of entries on which the scores are based.



Metric	Whole archive (#Entries)	EM structures (#Entries)
Clashscore	158937	4297
Ramachandran outliers	154571	4023
Sidechain outliers	154315	3826

The table below summarises the geometric issues observed across the polymeric chains and their fit to the map. The red, orange, yellow and green segments of the bar indicate the fraction of residues that contain outliers for  $\geq 3$ , 2, 1 and 0 types of geometric quality criteria respectively. A grey segment represents the fraction of residues that are not modelled. The numeric value for each fraction is indicated below the corresponding segment, with a dot representing fractions  $\leq 5\%$ . The upper red bar (where present) indicates the fraction of residues that have poor fit to the EM map (all-atom inclusion  $< 40\%$ ). The numeric value is given above the bar.

Mol	Chain	Length	Quality of chain
1	A	1344	
1	B	1344	
1	C	1344	
1	D	1344	
2	E	17	
2	F	17	
2	G	17	
2	H	17	

## 2 Entry composition [i](#)

There are 5 unique types of molecules in this entry. The entry contains 31842 atoms, of which 0 are hydrogens and 0 are deuteriums.

In the tables below, the AltConf column contains the number of residues with at least one atom in alternate conformation and the Trace column contains the number of residues modelled with at most 2 atoms.

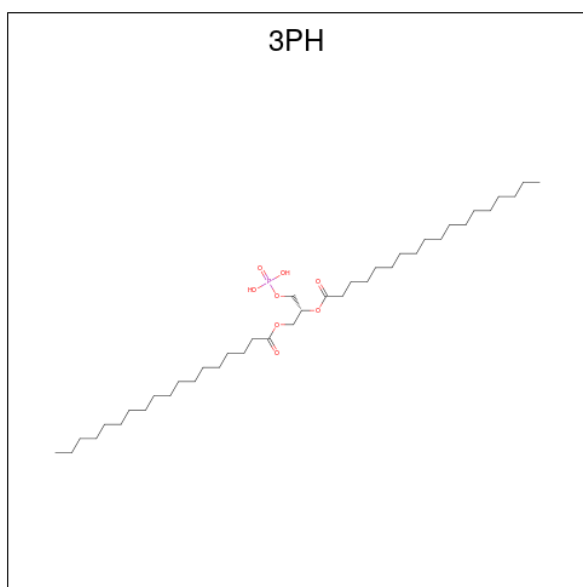
- Molecule 1 is a protein called Transient receptor potential cation channel, subfamily M, member 3.

Mol	Chain	Residues	Atoms					AltConf	Trace
			Total	C	N	O	S		
1	A	962	7798	5054	1319	1367	58	1	0
1	B	962	7798	5054	1319	1367	58	1	0
1	C	962	7798	5054	1319	1367	58	1	0
1	D	962	7798	5054	1319	1367	58	1	0

- Molecule 2 is a protein called Unidentified segment at the N-terminus of TRPM3.

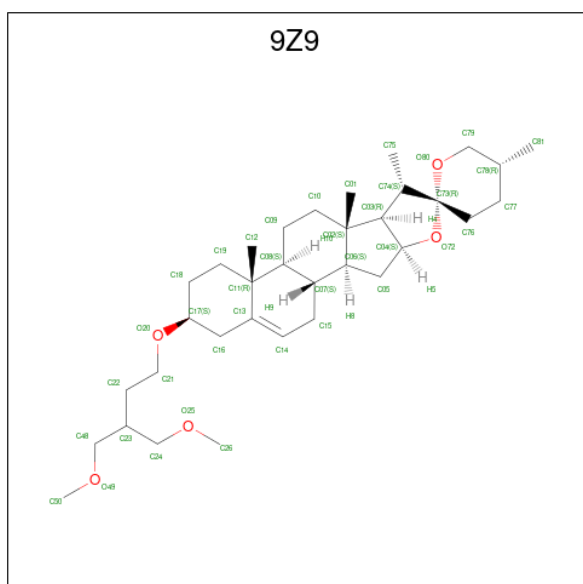
Mol	Chain	Residues	Atoms				AltConf	Trace
			Total	C	N	O		
2	E	17	85	51	17	17	0	0
2	F	17	85	51	17	17	0	0
2	G	17	85	51	17	17	0	0
2	H	17	85	51	17	17	0	0

- Molecule 3 is 1,2-DIACYL-GLYCEROL-3-SN-PHOSPHATE (three-letter code: 3PH) (formula: C<sub>39</sub>H<sub>77</sub>O<sub>8</sub>P).



Mol	Chain	Residues	Atoms				AltConf
			Total	C	O	P	
3	A	1	38	29	8	1	0
3	B	1	38	29	8	1	0
3	C	1	38	29	8	1	0
3	D	1	38	29	8	1	0

- Molecule 4 is (3beta,14beta,17beta,25R)-3-[4-methoxy-3-(methoxymethyl)butoxy]spirost-5-en (three-letter code: 9Z9) (formula: C<sub>34</sub>H<sub>56</sub>O<sub>5</sub>).



Mol	Chain	Residues	Atoms			AltConf
4	A	1	Total	C	O	0
			39	34	5	
4	B	1	Total	C	O	0
			39	34	5	
4	C	1	Total	C	O	0
			39	34	5	
4	D	1	Total	C	O	0
			39	34	5	

- Molecule 5 is SODIUM ION (three-letter code: NA) (formula: Na).

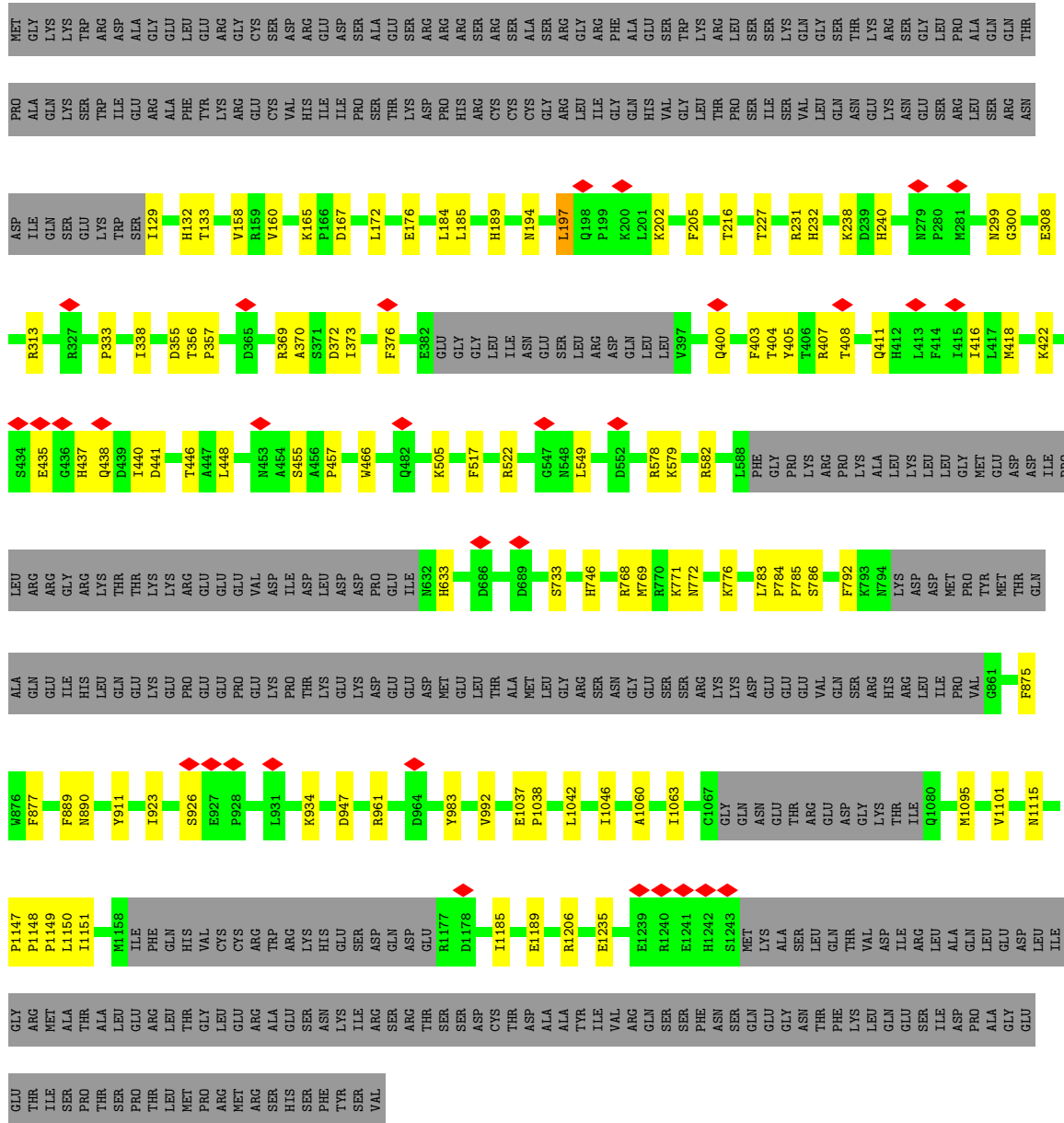
Mol	Chain	Residues	Atoms		AltConf
5	A	2	Total	Na	0
			2	2	



PRO  
ARG  
MET  
LYS  
TRP  
SER  
ARG  
HIS  
SER  
PHE  
TYR  
VAL

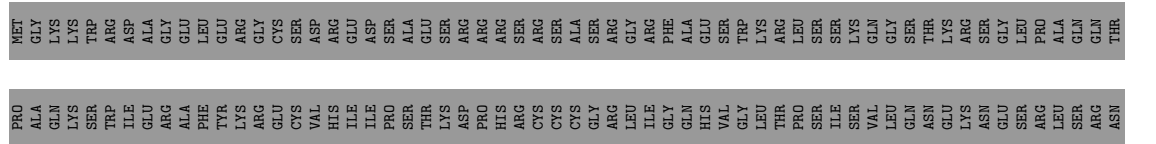
- Molecule 1: Transient receptor potential cation channel, subfamily M, member 3

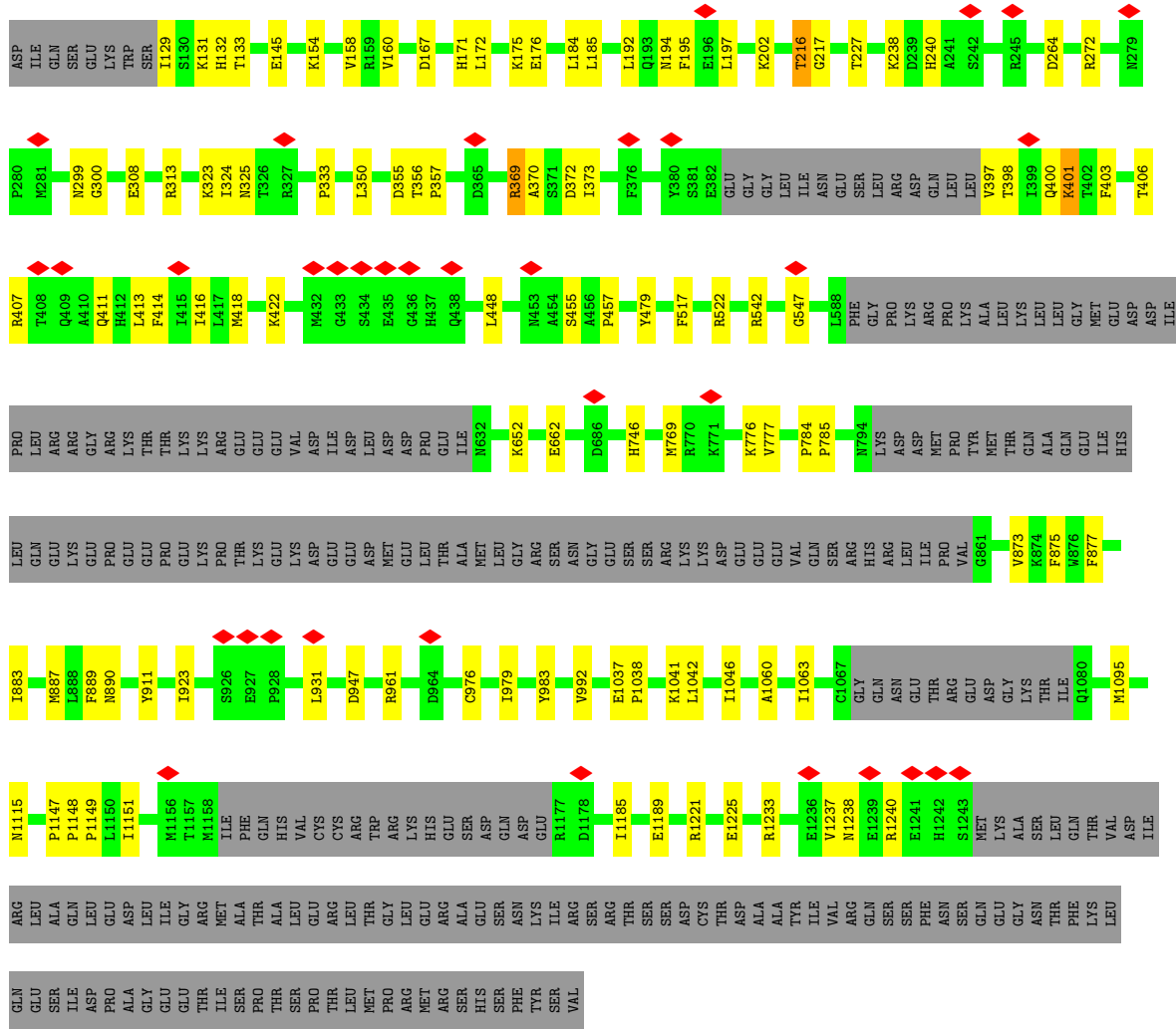
Chain B:  64% 8% 28%



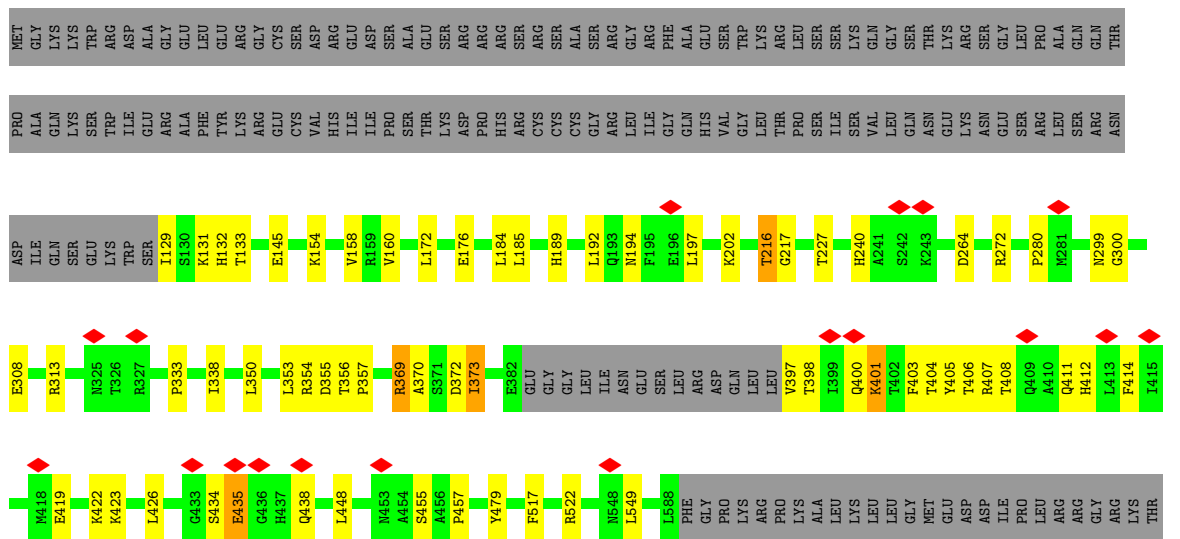
- Molecule 1: Transient receptor potential cation channel, subfamily M, member 3

Chain C:  63% 8% 28%

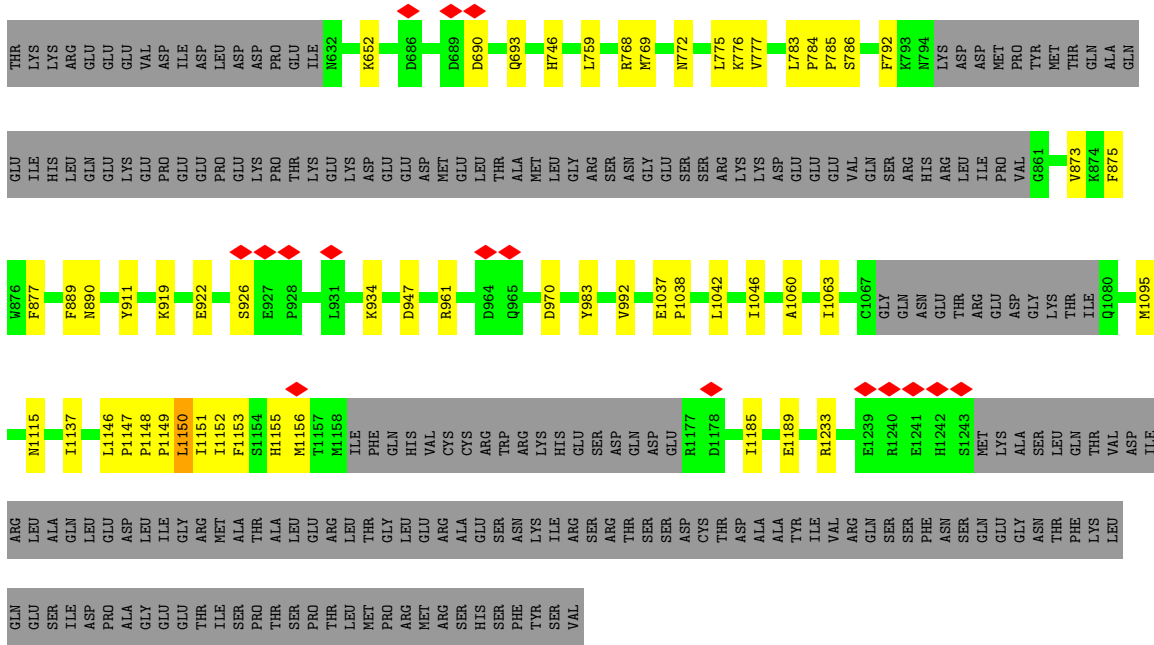




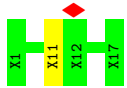
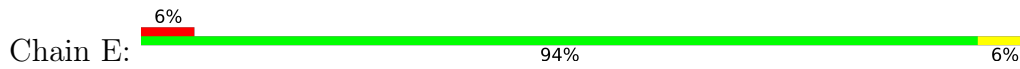
- Molecule 1: Transient receptor potential cation channel, subfamily M, member 3



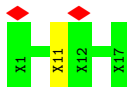




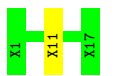
- Molecule 2: Unidentified segment at the N-terminus of TRPM3



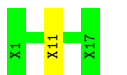
- Molecule 2: Unidentified segment at the N-terminus of TRPM3



- Molecule 2: Unidentified segment at the N-terminus of TRPM3



- Molecule 2: Unidentified segment at the N-terminus of TRPM3



## 4 Experimental information

Property	Value	Source
EM reconstruction method	SINGLE PARTICLE	Depositor
Imposed symmetry	POINT, C1	Depositor
Number of particles used	1948680	Depositor
Resolution determination method	FSC 0.143 CUT-OFF	Depositor
CTF correction method	PHASE FLIPPING AND AMPLITUDE CORRECTION	Depositor
Microscope	FEI TITAN KRIOS	Depositor
Voltage (kV)	300	Depositor
Electron dose ( $e^-/\text{\AA}^2$ )	1.35	Depositor
Minimum defocus (nm)	600	Depositor
Maximum defocus (nm)	2000	Depositor
Magnification	Not provided	
Image detector	GATAN K3 (6k x 4k)	Depositor
Maximum map value	2.877	Depositor
Minimum map value	-1.702	Depositor
Average map value	0.001	Depositor
Map value standard deviation	0.065	Depositor
Recommended contour level	0.3	Depositor
Map size ( $\text{\AA}$ )	378.4, 378.4, 378.4	wwPDB
Map dimensions	440, 440, 440	wwPDB
Map angles ( $^\circ$ )	90.0, 90.0, 90.0	wwPDB
Pixel spacing ( $\text{\AA}$ )	0.86, 0.86, 0.86	Depositor

## 5 Model quality [i](#)

### 5.1 Standard geometry [i](#)

Bond lengths and bond angles in the following residue types are not validated in this section: 3PH, NA, 9Z9

The Z score for a bond length (or angle) is the number of standard deviations the observed value is removed from the expected value. A bond length (or angle) with  $|Z| > 5$  is considered an outlier worth inspection. RMSZ is the root-mean-square of all Z scores of the bond lengths (or angles).

Mol	Chain	Bond lengths		Bond angles	
		RMSZ	# Z  >5	RMSZ	# Z  >5
1	A	0.26	0/7978	0.45	0/10786
1	B	0.26	0/7978	0.45	0/10786
1	C	0.26	0/7978	0.45	0/10786
1	D	0.26	0/7978	0.45	0/10786
All	All	0.26	0/31912	0.45	0/43144

There are no bond length outliers.

There are no bond angle outliers.

There are no chirality outliers.

There are no planarity outliers.

### 5.2 Too-close contacts [i](#)

In the following table, the Non-H and H(model) columns list the number of non-hydrogen atoms and hydrogen atoms in the chain respectively. The H(added) column lists the number of hydrogen atoms added and optimized by MolProbity. The Clashes column lists the number of clashes within the asymmetric unit, whereas Symm-Clashes lists symmetry-related clashes.

Mol	Chain	Non-H	H(model)	H(added)	Clashes	Symm-Clashes
1	A	7798	0	7916	47	0
1	B	7798	0	7916	60	0
1	C	7798	0	7916	59	0
1	D	7798	0	7916	75	0
2	E	85	0	20	1	0
2	F	85	0	20	1	0
2	G	85	0	22	1	0
2	H	85	0	21	1	0
3	A	38	0	49	0	0

*Continued on next page...*

*Continued from previous page...*

Mol	Chain	Non-H	H(model)	H(added)	Clashes	Symm-Clashes
3	B	38	0	49	0	0
3	C	38	0	49	1	0
3	D	38	0	49	0	0
4	A	39	0	0	15	0
4	B	39	0	0	16	0
4	C	39	0	0	15	0
4	D	39	0	0	15	0
5	A	2	0	0	0	0
All	All	31842	0	31943	295	0

The all-atom clashscore is defined as the number of clashes found per 1000 atoms (including hydrogen atoms). The all-atom clashscore for this structure is 5.

All (295) close contacts within the same asymmetric unit are listed below, sorted by their clash magnitude.

Atom-1	Atom-2	Interatomic distance (Å)	Clash overlap (Å)
4:D:1401:9Z9:C73	4:D:1401:9Z9:C74	1.79	1.58
4:C:1401:9Z9:C06	4:C:1401:9Z9:C07	1.84	1.56
4:C:1401:9Z9:C73	4:C:1401:9Z9:C74	1.79	1.56
4:B:1401:9Z9:C73	4:B:1401:9Z9:C74	1.79	1.54
4:A:1402:9Z9:C06	4:A:1402:9Z9:C07	1.84	1.53
4:D:1401:9Z9:C06	4:D:1401:9Z9:C07	1.84	1.53
4:A:1402:9Z9:C73	4:A:1402:9Z9:C74	1.79	1.52
4:B:1401:9Z9:C06	4:B:1401:9Z9:C07	1.84	1.51
4:B:1401:9Z9:C74	4:B:1401:9Z9:C75	1.90	1.48
4:C:1401:9Z9:C74	4:C:1401:9Z9:C75	1.90	1.48
4:D:1401:9Z9:C74	4:D:1401:9Z9:C75	1.90	1.47
4:A:1402:9Z9:C74	4:A:1402:9Z9:C75	1.90	1.46
4:D:1401:9Z9:C75	4:D:1401:9Z9:C03	2.35	1.02
4:A:1402:9Z9:C75	4:A:1402:9Z9:C03	2.35	1.01
4:C:1401:9Z9:C74	4:C:1401:9Z9:O80	2.09	1.01
4:C:1401:9Z9:C75	4:C:1401:9Z9:C03	2.35	1.01
4:A:1402:9Z9:C74	4:A:1402:9Z9:O80	2.09	1.00
4:C:1401:9Z9:C06	4:C:1401:9Z9:C02	1.78	1.00
4:D:1401:9Z9:C74	4:D:1401:9Z9:O80	2.09	0.99
4:B:1401:9Z9:C06	4:B:1401:9Z9:C02	1.78	0.98
4:D:1401:9Z9:C06	4:D:1401:9Z9:C02	1.78	0.98
4:B:1401:9Z9:C74	4:B:1401:9Z9:O80	2.09	0.98
4:B:1401:9Z9:C75	4:B:1401:9Z9:C03	2.35	0.96
4:A:1402:9Z9:C06	4:A:1402:9Z9:C02	1.78	0.93
4:D:1401:9Z9:C07	4:D:1401:9Z9:C05	2.52	0.83

*Continued on next page...*

*Continued from previous page...*

Atom-1	Atom-2	Interatomic distance (Å)	Clash overlap (Å)
4:C:1401:9Z9:C07	4:C:1401:9Z9:C05	2.51	0.80
1:D:1147:PRO:HD2	1:D:1150:LEU:HD21	1.60	0.80
4:A:1402:9Z9:C07	4:A:1402:9Z9:C05	2.52	0.79
4:A:1402:9Z9:C06	4:A:1402:9Z9:C15	2.62	0.77
4:B:1401:9Z9:C07	4:B:1401:9Z9:C05	2.52	0.77
4:D:1401:9Z9:C06	4:D:1401:9Z9:C15	2.62	0.75
4:D:1401:9Z9:C06	4:D:1401:9Z9:C10	2.65	0.75
4:A:1402:9Z9:C06	4:A:1402:9Z9:C10	2.64	0.75
4:C:1401:9Z9:C06	4:C:1401:9Z9:C15	2.62	0.75
4:C:1401:9Z9:C06	4:C:1401:9Z9:C10	2.65	0.74
4:B:1401:9Z9:C06	4:B:1401:9Z9:C10	2.65	0.74
4:B:1401:9Z9:C06	4:B:1401:9Z9:C08	2.66	0.73
4:C:1401:9Z9:C06	4:C:1401:9Z9:C08	2.66	0.73
4:A:1402:9Z9:C06	4:A:1402:9Z9:C08	2.67	0.73
4:B:1401:9Z9:C06	4:B:1401:9Z9:C15	2.62	0.72
1:D:404:THR:HA	1:D:408:THR:HA	1.72	0.71
1:A:369:ARG:NH1	1:A:405:TYR:OH	2.23	0.70
4:D:1401:9Z9:C06	4:D:1401:9Z9:C08	2.66	0.70
4:B:1401:9Z9:C06	4:B:1401:9Z9:C01	2.70	0.69
1:D:1146:LEU:HB3	1:D:1150:LEU:HD23	1.74	0.69
1:D:369:ARG:NH1	1:D:405:TYR:OH	2.26	0.69
1:A:404:THR:HA	1:A:408:THR:HA	1.75	0.69
4:A:1402:9Z9:C06	4:A:1402:9Z9:C01	2.70	0.69
1:A:333:PRO:HB2	1:A:448:LEU:HD22	1.76	0.68
4:C:1401:9Z9:C75	4:C:1401:9Z9:O80	2.42	0.68
4:B:1401:9Z9:C75	4:B:1401:9Z9:O80	2.42	0.67
4:A:1402:9Z9:C75	4:A:1402:9Z9:O80	2.43	0.67
4:D:1401:9Z9:C75	4:D:1401:9Z9:O80	2.42	0.67
4:C:1401:9Z9:C06	4:C:1401:9Z9:C01	2.70	0.67
1:D:333:PRO:HB2	1:D:448:LEU:HD22	1.77	0.67
1:B:333:PRO:HB2	1:B:448:LEU:HD22	1.75	0.66
1:C:333:PRO:HB2	1:C:448:LEU:HD22	1.76	0.66
4:D:1401:9Z9:C06	4:D:1401:9Z9:C01	2.71	0.66
1:B:205:PHE:HA	1:B:440:ILE:HD12	1.79	0.64
1:D:1149:PRO:HG2	1:D:1150:LEU:HD13	1.79	0.63
1:D:133:THR:HG22	2:H:11:UNK:HA	1.80	0.63
1:D:1147:PRO:O	1:D:1151:ILE:HG23	1.98	0.62
1:D:403:PHE:HD1	1:D:405:TYR:H	1.47	0.62
1:D:890:ASN:ND2	1:D:983:TYR:OH	2.29	0.62
1:A:133:THR:HG22	2:E:11:UNK:HA	1.81	0.61
1:B:194:ASN:OD1	1:B:231:ARG:NH1	2.34	0.61

*Continued on next page...*

*Continued from previous page...*

Atom-1	Atom-2	Interatomic distance (Å)	Clash overlap (Å)
1:B:403:PHE:HD1	1:B:405:TYR:H	1.49	0.61
1:B:1235:GLU:OE1	1:C:1233:ARG:NH1	2.34	0.61
1:B:369:ARG:NH1	1:B:405:TYR:OH	2.35	0.60
1:D:1146:LEU:HB3	1:D:1150:LEU:CD2	2.32	0.59
1:A:245:ARG:HH11	1:B:1206:ARG:HE	1.49	0.59
1:C:890:ASN:ND2	1:C:983:TYR:OH	2.29	0.59
1:B:890:ASN:ND2	1:B:983:TYR:OH	2.29	0.58
1:D:517:PHE:O	1:D:522:ARG:NH1	2.36	0.58
1:A:313:ARG:NH2	1:A:355:ASP:OD2	2.37	0.58
1:C:517:PHE:O	1:C:522:ARG:NH1	2.36	0.58
1:C:369:ARG:HG3	1:C:370:ALA:H	1.69	0.58
1:B:517:PHE:O	1:B:522:ARG:NH1	2.37	0.57
1:A:517:PHE:O	1:A:522:ARG:NH1	2.37	0.57
4:B:1401:9Z9:C07	4:B:1401:9Z9:C02	2.83	0.57
4:A:1402:9Z9:C07	4:A:1402:9Z9:C02	2.83	0.57
4:D:1401:9Z9:C07	4:D:1401:9Z9:C02	2.83	0.57
1:A:890:ASN:ND2	1:A:983:TYR:OH	2.30	0.57
1:C:397:VAL:HB	1:C:400:GLN:HB3	1.86	0.57
1:D:133:THR:HG21	1:D:300:GLY:HA3	1.87	0.57
4:C:1401:9Z9:C07	4:C:1401:9Z9:C02	2.83	0.56
1:B:313:ARG:NH2	1:B:355:ASP:OD2	2.38	0.56
1:D:172:LEU:HD12	1:D:176:GLU:HB2	1.88	0.56
1:D:369:ARG:HD2	1:D:405:TYR:HE1	1.69	0.56
1:D:313:ARG:NH2	1:D:355:ASP:OD2	2.39	0.55
1:D:1037:GLU:HG3	1:D:1038:PRO:HD2	1.88	0.55
1:D:435:GLU:O	1:D:438:GLN:NE2	2.30	0.55
1:B:133:THR:HG22	2:F:11:UNK:HA	1.87	0.55
1:C:1063:ILE:HD12	1:C:1095:MET:HG2	1.89	0.55
1:A:356:THR:HB	1:A:357:PRO:HD3	1.88	0.55
1:C:172:LEU:HD12	1:C:176:GLU:HB2	1.88	0.54
1:C:313:ARG:NH2	1:C:355:ASP:OD2	2.40	0.54
1:C:194:ASN:O	1:D:479:TYR:OH	2.25	0.54
1:C:133:THR:HG22	2:G:11:UNK:HA	1.89	0.54
1:D:1063:ILE:HD12	1:D:1095:MET:HG2	1.90	0.54
1:C:356:THR:HB	1:C:357:PRO:HD3	1.90	0.54
1:D:192:LEU:HD23	1:D:192:LEU:H	1.71	0.54
1:B:1063:ILE:HD12	1:B:1095:MET:HG2	1.89	0.53
1:D:350:LEU:HD21	1:D:354:ARG:HH22	1.72	0.53
1:D:353:LEU:HD13	1:D:423:LYS:HB3	1.91	0.53
1:B:1037:GLU:HG3	1:B:1038:PRO:HD2	1.88	0.53
1:D:768:ARG:NH1	1:D:792:PHE:O	2.42	0.53

*Continued on next page...*

*Continued from previous page...*

Atom-1	Atom-2	Interatomic distance (Å)	Clash overlap (Å)
1:B:1185:ILE:HG13	1:B:1189:GLU:HB3	1.91	0.53
1:A:216:THR:OG1	1:A:217:GLY:N	2.43	0.52
1:A:349:VAL:HG23	1:A:361:VAL:HG21	1.91	0.52
1:A:407:ARG:HH21	1:A:411:GLN:HG3	1.75	0.52
1:B:1101:VAL:HG21	3:C:1402:3PH:H2B1	1.91	0.52
1:D:1148:PRO:O	1:D:1151:ILE:HG12	2.10	0.52
1:C:216:THR:OG1	1:C:217:GLY:N	2.43	0.52
1:A:402:THR:HG23	1:A:412:HIS:HE1	1.75	0.51
1:B:356:THR:HB	1:B:357:PRO:HD3	1.91	0.51
1:B:455:SER:HB2	1:B:457:PRO:HD2	1.93	0.51
1:C:192:LEU:H	1:C:192:LEU:HD23	1.75	0.51
1:B:129:ILE:HD12	1:B:132:HIS:HB2	1.92	0.51
1:B:172:LEU:HD12	1:B:176:GLU:HB2	1.92	0.51
1:A:176:GLU:N	1:A:176:GLU:OE1	2.44	0.51
1:B:369:ARG:HG3	1:B:370:ALA:H	1.75	0.51
1:B:435:GLU:O	1:B:438:GLN:NE2	2.43	0.51
1:A:455:SER:HB2	1:A:457:PRO:HD2	1.93	0.51
1:B:133:THR:HG21	1:B:300:GLY:HA3	1.92	0.51
1:D:397:VAL:HG22	1:D:400:GLN:H	1.76	0.51
1:A:172:LEU:HD12	1:A:176:GLU:HB2	1.92	0.51
1:C:401:LYS:HD3	1:C:414:PHE:HD2	1.76	0.50
1:C:1060:ALA:HA	1:C:1063:ILE:HG12	1.94	0.50
1:D:1060:ALA:HA	1:D:1063:ILE:HG12	1.94	0.50
1:B:1060:ALA:HA	1:B:1063:ILE:HG12	1.93	0.50
1:C:455:SER:HB2	1:C:457:PRO:HD2	1.94	0.50
1:A:1063:ILE:HD12	1:A:1095:MET:HG2	1.93	0.49
1:D:1185:ILE:HG13	1:D:1189:GLU:HB3	1.93	0.49
1:D:403:PHE:HZ	1:D:412:HIS:HA	1.77	0.49
1:D:911:TYR:CE2	1:D:1149:PRO:HD3	2.48	0.49
1:A:1060:ALA:HA	1:A:1063:ILE:HG12	1.93	0.49
1:B:404:THR:HA	1:B:408:THR:HA	1.95	0.49
1:B:768:ARG:NH1	1:B:792:PHE:O	2.45	0.49
1:B:926:SER:HB2	1:B:934:LYS:HG2	1.95	0.49
1:B:176:GLU:OE1	1:B:176:GLU:N	2.45	0.49
1:C:129:ILE:HD12	1:C:132:HIS:HB2	1.95	0.48
1:B:158:VAL:HG12	1:B:160:VAL:HG13	1.95	0.48
1:B:783:LEU:HD23	1:B:786:SER:HB2	1.96	0.48
4:B:1401:9Z9:O80	4:B:1401:9Z9:C03	2.46	0.48
1:D:194:ASN:HD21	1:D:227:THR:HG22	1.78	0.48
1:D:783:LEU:HD23	1:D:786:SER:HB2	1.95	0.48
1:D:401:LYS:HD3	1:D:414:PHE:CD1	2.49	0.48

*Continued on next page...*

*Continued from previous page...*

Atom-1	Atom-2	Interatomic distance (Å)	Clash overlap (Å)
1:A:1037:GLU:HG3	1:A:1038:PRO:HD2	1.96	0.48
1:D:926:SER:HB2	1:D:934:LYS:HG2	1.96	0.48
1:C:197:LEU:HD11	1:C:202:LYS:HB3	1.96	0.47
4:B:1401:9Z9:C06	4:B:1401:9Z9:C09	2.92	0.47
1:A:308:GLU:N	1:A:308:GLU:OE1	2.47	0.47
1:C:308:GLU:N	1:C:308:GLU:OE1	2.48	0.47
1:A:353:LEU:HB3	1:A:423:LYS:HD2	1.95	0.47
1:A:1185:ILE:HG13	1:A:1189:GLU:HB3	1.96	0.47
4:C:1401:9Z9:C06	4:C:1401:9Z9:C09	2.92	0.47
1:D:455:SER:HB2	1:D:457:PRO:HD2	1.95	0.47
4:A:1402:9Z9:C06	4:A:1402:9Z9:C09	2.92	0.47
1:C:769:MET:SD	1:C:776:LYS:HE2	2.55	0.47
1:D:299:ASN:N	1:D:299:ASN:OD1	2.48	0.47
1:C:1185:ILE:HG13	1:C:1189:GLU:HB3	1.95	0.47
1:B:437:HIS:HE1	1:B:446:THR:HG21	1.80	0.47
4:D:1401:9Z9:C06	4:D:1401:9Z9:C09	2.92	0.47
1:D:131:LYS:HZ3	1:D:299:ASN:HB2	1.79	0.47
1:D:1152:ILE:HA	1:D:1155:HIS:ND1	2.30	0.47
1:A:482:GLN:HA	1:D:280:PRO:HG3	1.97	0.47
1:D:308:GLU:N	1:D:308:GLU:OE1	2.48	0.47
1:B:911:TYR:CE2	1:B:1149:PRO:HD3	2.50	0.46
1:D:769:MET:SD	1:D:776:LYS:HE2	2.56	0.46
1:C:1238:ASN:HD22	1:D:1233:ARG:HD2	1.80	0.46
1:D:1151:ILE:HG13	1:D:1155:HIS:HE1	1.81	0.46
1:C:133:THR:HG21	1:C:300:GLY:HA3	1.98	0.46
1:C:299:ASN:OD1	1:C:299:ASN:N	2.49	0.46
1:B:769:MET:SD	1:B:776:LYS:HE2	2.55	0.45
1:A:1148:PRO:HA	1:A:1151:ILE:HG12	1.97	0.45
1:C:1148:PRO:HA	1:C:1151:ILE:HG12	1.99	0.45
1:A:194:ASN:OD1	1:A:231:ARG:NH1	2.49	0.45
1:B:197:LEU:HD13	1:B:202:LYS:HE2	1.98	0.45
1:B:370:ALA:HA	1:B:373:ILE:HG23	1.99	0.45
1:A:370:ALA:O	1:A:373:ILE:HG12	2.17	0.45
1:C:911:TYR:CE2	1:C:1149:PRO:HD3	2.51	0.45
1:C:194:ASN:OD1	1:D:479:TYR:OH	2.31	0.45
1:D:405:TYR:HD2	1:D:406:THR:HG23	1.81	0.45
1:D:216:THR:OG1	1:D:217:GLY:N	2.50	0.45
1:D:369:ARG:O	1:D:372:ASP:N	2.47	0.45
1:B:578:ARG:HH22	1:B:733:SER:HA	1.82	0.45
1:C:158:VAL:HG12	1:C:160:VAL:HG13	1.99	0.45
1:C:542:ARG:HG2	1:C:547:GLY:HA2	1.98	0.45

*Continued on next page...*



*Continued from previous page...*

Atom-1	Atom-2	Interatomic distance (Å)	Clash overlap (Å)
1:D:356:THR:HB	1:D:357:PRO:HD3	1.98	0.45
1:B:308:GLU:N	1:B:308:GLU:OE1	2.49	0.45
1:C:171:HIS:CE1	1:C:175:LYS:HG3	2.52	0.44
1:A:369:ARG:HD2	1:A:405:TYR:CE1	2.52	0.44
1:C:238:LYS:HE3	1:C:238:LYS:HB2	1.82	0.44
1:D:652:LYS:HE3	1:D:652:LYS:HB3	1.84	0.44
1:D:398:THR:O	1:D:401:LYS:HG3	2.17	0.44
1:A:184:LEU:HD12	1:A:185:LEU:H	1.82	0.44
1:C:1147:PRO:O	1:C:1151:ILE:HG23	2.18	0.44
1:D:158:VAL:HG12	1:D:160:VAL:HG13	1.98	0.44
1:B:216:THR:HG22	1:B:466:TRP:HB3	2.00	0.44
1:B:505:LYS:HE3	1:B:505:LYS:HB2	1.77	0.44
1:C:350:LEU:HD22	1:C:416:ILE:HG23	2.00	0.44
1:B:1148:PRO:HA	1:B:1151:ILE:HG12	2.00	0.43
1:A:189:HIS:HB2	1:A:338:ILE:HD13	2.01	0.43
1:B:194:ASN:O	1:C:479:TYR:OH	2.35	0.43
1:D:772:ASN:HD21	1:D:775:LEU:HD12	1.83	0.43
1:B:407:ARG:NE	1:B:411:GLN:HB2	2.33	0.43
1:C:407:ARG:CZ	1:C:411:GLN:HE22	2.31	0.43
1:B:1147:PRO:O	1:B:1151:ILE:HG23	2.18	0.43
1:A:784:PRO:N	1:A:785:PRO:HD2	2.34	0.43
1:B:189:HIS:HB2	1:B:338:ILE:HD13	2.01	0.43
1:B:1148:PRO:N	1:B:1149:PRO:HD2	2.34	0.43
1:C:784:PRO:N	1:C:785:PRO:HD2	2.34	0.43
1:D:784:PRO:N	1:D:785:PRO:HD2	2.34	0.43
1:B:184:LEU:HD12	1:B:185:LEU:H	1.83	0.43
1:C:875:PHE:CE1	1:C:992:VAL:HG21	2.54	0.43
1:D:184:LEU:HD12	1:D:185:LEU:H	1.84	0.43
1:D:264:ASP:C	1:D:272:ARG:HE	2.22	0.43
1:D:875:PHE:CE1	1:D:992:VAL:HG21	2.54	0.43
1:D:129:ILE:HD12	1:D:132:HIS:HB2	2.01	0.43
1:D:370:ALA:HA	1:D:373:ILE:HG23	2.01	0.43
1:A:131:LYS:HZ3	1:A:299:ASN:HB2	1.84	0.43
1:A:240:HIS:NE2	1:A:244:SER:OG	2.52	0.43
1:A:565:GLU:OE2	1:A:577:THR:OG1	2.27	0.43
1:A:575:ASN:OD1	1:A:578:ARG:NH1	2.52	0.43
1:A:875:PHE:CE1	1:A:992:VAL:HG21	2.54	0.43
1:B:299:ASN:OD1	1:B:299:ASN:N	2.52	0.43
1:B:784:PRO:N	1:B:785:PRO:HD2	2.34	0.43
1:C:184:LEU:HD12	1:C:185:LEU:H	1.84	0.43
1:D:1148:PRO:N	1:D:1149:PRO:HD2	2.34	0.43

*Continued on next page...*

*Continued from previous page...*

Atom-1	Atom-2	Interatomic distance (Å)	Clash overlap (Å)
1:B:772:ASN:O	1:B:776:LYS:NZ	2.35	0.42
1:D:690:ASP:HA	1:D:693:GLN:HG2	2.01	0.42
1:A:192:LEU:H	1:A:192:LEU:HD23	1.84	0.42
1:A:406:THR:OG1	1:A:407:ARG:N	2.52	0.42
1:B:875:PHE:CE1	1:B:992:VAL:HG21	2.54	0.42
1:B:407:ARG:HB3	1:B:411:GLN:HB2	2.02	0.42
1:C:652:LYS:HB3	1:C:652:LYS:HE3	1.84	0.42
1:A:299:ASN:OD1	1:A:299:ASN:N	2.53	0.42
4:A:1402:9Z9:C05	4:A:1402:9Z9:C01	2.86	0.42
1:C:662:GLU:OE1	1:C:662:GLU:N	2.53	0.42
1:B:1042:LEU:O	1:B:1046:ILE:HG12	2.19	0.42
1:C:195:PHE:HE2	1:C:197:LEU:HD23	1.84	0.42
1:C:1042:LEU:O	1:C:1046:ILE:HG12	2.20	0.42
1:A:1042:LEU:O	1:A:1046:ILE:HG12	2.20	0.42
1:B:369:ARG:O	1:B:372:ASP:N	2.47	0.42
1:B:370:ALA:O	1:B:373:ILE:HG12	2.19	0.42
1:D:407:ARG:HB2	1:D:411:GLN:HB3	2.02	0.42
4:D:1401:9Z9:C05	4:D:1401:9Z9:C01	2.86	0.42
1:B:165:LYS:HA	1:B:165:LYS:HD3	1.86	0.42
1:B:197:LEU:HD12	1:B:232:HIS:CE1	2.55	0.42
1:A:145:GLU:HB3	1:A:154:LYS:NZ	2.35	0.42
1:B:418:MET:O	1:B:422:LYS:HG3	2.20	0.42
1:D:189:HIS:HB2	1:D:338:ILE:HD13	2.01	0.42
1:D:369:ARG:HG3	1:D:370:ALA:H	1.85	0.42
1:D:419:GLU:HA	1:D:422:LYS:HB2	2.01	0.42
1:C:370:ALA:O	1:C:373:ILE:HG12	2.20	0.42
1:C:131:LYS:HZ3	1:C:299:ASN:HB2	1.84	0.41
1:C:418:MET:O	1:C:422:LYS:HG3	2.20	0.41
1:D:407:ARG:HB2	1:D:411:GLN:CB	2.50	0.41
1:C:264:ASP:HA	1:C:272:ARG:HH21	1.85	0.41
4:C:1401:9Z9:C05	4:C:1401:9Z9:C01	2.86	0.41
1:D:434:SER:O	1:D:435:GLU:HG3	2.20	0.41
1:A:652:LYS:HB3	1:A:652:LYS:HE3	1.83	0.41
1:B:579:LYS:HD3	1:B:579:LYS:HA	1.86	0.41
1:B:579:LYS:HD3	1:B:582:ARG:HB2	2.02	0.41
1:C:1221:ARG:NH1	1:C:1225:GLU:OE2	2.53	0.41
1:D:919:LYS:HA	1:D:922:GLU:HG2	2.01	0.41
1:D:1042:LEU:O	1:D:1046:ILE:HG12	2.20	0.41
1:D:1153:PHE:HA	1:D:1156:MET:HE1	2.01	0.41
1:C:777:VAL:HG13	1:C:873:VAL:HG22	2.02	0.41
1:D:145:GLU:HB3	1:D:154:LYS:NZ	2.36	0.41

*Continued on next page...*

Continued from previous page...

Atom-1	Atom-2	Interatomic distance (Å)	Clash overlap (Å)
1:A:541:VAL:HG21	1:A:555:ILE:HD13	2.02	0.41
1:B:1149:PRO:HG2	1:B:1150:LEU:HD23	2.03	0.41
1:D:419:GLU:OE1	1:D:419:GLU:N	2.42	0.41
1:D:423:LYS:HG2	1:D:426:LEU:HD12	2.02	0.41
1:A:1156:MET:SD	1:A:1156:MET:N	2.93	0.41
1:C:145:GLU:HB3	1:C:154:LYS:NZ	2.35	0.41
1:C:324:ILE:HG12	1:C:325:ASN:H	1.86	0.41
1:A:911:TYR:CE2	1:A:1149:PRO:HD3	2.56	0.41
1:C:323:LYS:HD3	1:C:323:LYS:HA	1.97	0.41
1:C:369:ARG:O	1:C:372:ASP:N	2.49	0.41
1:C:1037:GLU:HG3	1:C:1038:PRO:HD2	2.02	0.41
1:A:171:HIS:CE1	1:A:175:LYS:HG3	2.56	0.41
1:A:505:LYS:HB2	1:A:505:LYS:HE3	1.77	0.41
1:D:777:VAL:HG13	1:D:873:VAL:HG22	2.03	0.41
1:C:398:THR:O	1:C:401:LYS:HG3	2.22	0.40
1:C:1237:VAL:O	1:C:1240:ARG:HG2	2.22	0.40
1:A:976:CYS:O	1:A:979:ILE:HG22	2.21	0.40
1:B:238:LYS:HE3	1:B:238:LYS:HB2	1.82	0.40
1:C:1148:PRO:N	1:C:1149:PRO:HD2	2.36	0.40
4:B:1401:9Z9:C05	4:B:1401:9Z9:C01	2.86	0.40
1:C:883:ILE:O	1:C:887:MET:HG3	2.22	0.40
1:D:370:ALA:O	1:D:373:ILE:HG12	2.20	0.40
1:C:976:CYS:O	1:C:979:ILE:HG22	2.22	0.40
1:D:759:LEU:HD22	1:D:1137:ILE:HD12	2.04	0.40

There are no symmetry-related clashes.

## 5.3 Torsion angles [\(i\)](#)

### 5.3.1 Protein backbone [\(i\)](#)

In the following table, the Percentiles column shows the percent Ramachandran outliers of the chain as a percentile score with respect to all PDB entries followed by that with respect to all EM entries.

The Analysed column shows the number of residues for which the backbone conformation was analysed, and the total number of residues.

Mol	Chain	Analysed	Favoured	Allowed	Outliers	Percentiles
1	A	951/1344 (71%)	919 (97%)	32 (3%)	0	<b>100</b> <b>100</b>

Continued on next page...

*Continued from previous page...*

Mol	Chain	Analysed	Favoured	Allowed	Outliers	Percentiles	
1	B	951/1344 (71%)	925 (97%)	26 (3%)	0	100	100
1	C	951/1344 (71%)	916 (96%)	35 (4%)	0	100	100
1	D	951/1344 (71%)	916 (96%)	35 (4%)	0	100	100
All	All	3804/5376 (71%)	3676 (97%)	128 (3%)	0	100	100

There are no Ramachandran outliers to report.

### 5.3.2 Protein sidechains [i](#)

In the following table, the Percentiles column shows the percent sidechain outliers of the chain as a percentile score with respect to all PDB entries followed by that with respect to all EM entries.

The Analysed column shows the number of residues for which the sidechain conformation was analysed, and the total number of residues.

Mol	Chain	Analysed	Rotameric	Outliers	Percentiles	
1	A	854/1195 (72%)	833 (98%)	21 (2%)	47	76
1	B	854/1195 (72%)	836 (98%)	18 (2%)	53	80
1	C	853/1195 (71%)	835 (98%)	18 (2%)	53	80
1	D	854/1195 (72%)	837 (98%)	17 (2%)	55	81
All	All	3415/4780 (71%)	3341 (98%)	74 (2%)	54	79

All (74) residues with a non-rotameric sidechain are listed below:

Mol	Chain	Res	Type
1	A	167	ASP
1	A	192	LEU
1	A	194	ASN
1	A	216	THR
1	A	227	THR
1	A	279	ASN
1	A	369	ARG
1	A	414	PHE
1	A	416	ILE
1	A	549	LEU
1	A	746	HIS
1	A	771	LYS
1	A	877	PHE

*Continued on next page...*

*Continued from previous page...*

<b>Mol</b>	<b>Chain</b>	<b>Res</b>	<b>Type</b>
1	A	889	PHE
1	A	923	ILE
1	A	931	LEU
1	A	947	ASP
1	A	961	ARG
1	A	1041	LYS
1	A	1115	ASN
1	A	1156	MET
1	B	167	ASP
1	B	197	LEU
1	B	227	THR
1	B	240	HIS
1	B	376	PHE
1	B	400	GLN
1	B	416	ILE
1	B	441	ASP
1	B	549	LEU
1	B	633	HIS
1	B	746	HIS
1	B	771	LYS
1	B	877	PHE
1	B	889	PHE
1	B	923	ILE
1	B	947	ASP
1	B	961	ARG
1	B	1115	ASN
1	C	167	ASP
1	C	216	THR
1	C	227	THR
1	C	240	HIS
1	C	369	ARG
1	C	401	LYS
1	C	403	PHE
1	C	406	THR
1	C	413	LEU
1	C	746	HIS
1	C	877	PHE
1	C	889	PHE
1	C	923	ILE
1	C	931	LEU
1	C	947	ASP
1	C	961	ARG

*Continued on next page...*

*Continued from previous page...*

<b>Mol</b>	<b>Chain</b>	<b>Res</b>	<b>Type</b>
1	C	1041	LYS
1	C	1115	ASN
1	D	197	LEU
1	D	202	LYS
1	D	216	THR
1	D	240	HIS
1	D	369	ARG
1	D	373	ILE
1	D	401	LYS
1	D	435	GLU
1	D	549	LEU
1	D	746	HIS
1	D	877	PHE
1	D	889	PHE
1	D	947	ASP
1	D	961	ARG
1	D	970	ASP
1	D	1115	ASN
1	D	1150	LEU

Sometimes sidechains can be flipped to improve hydrogen bonding and reduce clashes. All (50) such sidechains are listed below:

<b>Mol</b>	<b>Chain</b>	<b>Res</b>	<b>Type</b>
1	A	134	GLN
1	A	171	HIS
1	A	198	GLN
1	A	288	ASN
1	A	632	ASN
1	A	697	HIS
1	A	890	ASN
1	A	933	GLN
1	A	1116	ASN
1	A	1199	GLN
1	B	134	GLN
1	B	193	GLN
1	B	198	GLN
1	B	232	HIS
1	B	400	GLN
1	B	437	HIS
1	B	632	ASN
1	B	697	HIS
1	B	890	ASN

*Continued on next page...*

*Continued from previous page...*

Mol	Chain	Res	Type
1	B	933	GLN
1	B	1116	ASN
1	B	1199	GLN
1	B	1229	ASN
1	C	134	GLN
1	C	171	HIS
1	C	288	ASN
1	C	409	GLN
1	C	412	HIS
1	C	632	ASN
1	C	697	HIS
1	C	739	GLN
1	C	890	ASN
1	C	933	GLN
1	C	1116	ASN
1	C	1199	GLN
1	C	1229	ASN
1	C	1238	ASN
1	D	134	GLN
1	D	171	HIS
1	D	194	ASN
1	D	198	GLN
1	D	279	ASN
1	D	632	ASN
1	D	697	HIS
1	D	739	GLN
1	D	772	ASN
1	D	890	ASN
1	D	1116	ASN
1	D	1199	GLN
1	D	1229	ASN

### 5.3.3 RNA [i](#)

There are no RNA molecules in this entry.

### 5.4 Non-standard residues in protein, DNA, RNA chains [i](#)

There are no non-standard protein/DNA/RNA residues in this entry.

## 5.5 Carbohydrates [i](#)

There are no monosaccharides in this entry.

## 5.6 Ligand geometry [i](#)

Of 10 ligands modelled in this entry, 2 are monoatomic - leaving 8 for Mogul analysis.

In the following table, the Counts columns list the number of bonds (or angles) for which Mogul statistics could be retrieved, the number of bonds (or angles) that are observed in the model and the number of bonds (or angles) that are defined in the Chemical Component Dictionary. The Link column lists molecule types, if any, to which the group is linked. The Z score for a bond length (or angle) is the number of standard deviations the observed value is removed from the expected value. A bond length (or angle) with  $|Z| > 2$  is considered an outlier worth inspection. RMSZ is the root-mean-square of all Z scores of the bond lengths (or angles).

Mol	Type	Chain	Res	Link	Bond lengths			Bond angles		
					Counts	RMSZ	# $ Z  > 2$	Counts	RMSZ	# $ Z  > 2$
3	3PH	D	1402	-	37,37,47	1.18	3 (8%)	41,42,52	1.19	2 (4%)
4	9Z9	C	1401	-	44,44,44	8.73	23 (52%)	66,68,68	4.54	23 (34%)
3	3PH	C	1402	-	37,37,47	1.18	3 (8%)	41,42,52	1.19	2 (4%)
3	3PH	A	1401	-	37,37,47	1.18	3 (8%)	41,42,52	1.19	2 (4%)
3	3PH	B	1402	-	37,37,47	1.18	3 (8%)	41,42,52	1.19	2 (4%)
4	9Z9	D	1401	-	44,44,44	8.73	23 (52%)	66,68,68	4.55	23 (34%)
4	9Z9	A	1402	-	44,44,44	8.72	23 (52%)	66,68,68	4.54	23 (34%)
4	9Z9	B	1401	-	44,44,44	8.73	23 (52%)	66,68,68	4.55	24 (36%)

In the following table, the Chirals column lists the number of chiral outliers, the number of chiral centers analysed, the number of these observed in the model and the number defined in the Chemical Component Dictionary. Similar counts are reported in the Torsion and Rings columns. '-' means no outliers of that kind were identified.

Mol	Type	Chain	Res	Link	Chirals	Torsions	Rings
3	3PH	D	1402	-	-	26/39/39/49	-
4	9Z9	C	1401	-	-	1/12/100/100	0/6/6/6
3	3PH	C	1402	-	-	27/39/39/49	-
3	3PH	A	1401	-	-	25/39/39/49	-
3	3PH	B	1402	-	-	26/39/39/49	-
4	9Z9	D	1401	-	-	5/12/100/100	0/6/6/6
4	9Z9	A	1402	-	-	1/12/100/100	0/6/6/6
4	9Z9	B	1401	-	-	5/12/100/100	0/6/6/6



All (104) bond length outliers are listed below:

Mol	Chain	Res	Type	Atoms	Z	Observed(Å)	Ideal(Å)
4	B	1401	9Z9	C02-C03	-27.15	1.00	1.56
4	C	1401	9Z9	C02-C03	-27.14	1.00	1.56
4	D	1401	9Z9	C02-C03	-27.13	1.01	1.56
4	A	1402	9Z9	C02-C03	-27.09	1.01	1.56
4	A	1402	9Z9	C05-C06	-21.99	1.04	1.54
4	C	1401	9Z9	C05-C06	-21.98	1.04	1.54
4	D	1401	9Z9	C05-C06	-21.97	1.04	1.54
4	B	1401	9Z9	C05-C06	-21.95	1.04	1.54
4	C	1401	9Z9	C03-C74	-21.76	0.83	1.54
4	D	1401	9Z9	C03-C74	-21.74	0.83	1.54
4	A	1402	9Z9	C03-C74	-21.73	0.83	1.54
4	B	1401	9Z9	C03-C74	-21.72	0.83	1.54
4	A	1402	9Z9	O72-C73	-18.02	1.03	1.42
4	B	1401	9Z9	O72-C73	-18.00	1.03	1.42
4	D	1401	9Z9	O72-C73	-17.97	1.03	1.42
4	C	1401	9Z9	O72-C73	-17.97	1.03	1.42
4	C	1401	9Z9	C75-C74	16.59	1.90	1.53
4	A	1402	9Z9	C75-C74	16.58	1.90	1.53
4	B	1401	9Z9	C75-C74	16.56	1.90	1.53
4	D	1401	9Z9	C75-C74	16.56	1.90	1.53
4	A	1402	9Z9	C07-C06	15.94	1.84	1.53
4	D	1401	9Z9	C07-C06	15.91	1.84	1.53
4	B	1401	9Z9	C07-C06	15.91	1.84	1.53
4	C	1401	9Z9	C07-C06	15.90	1.84	1.53
4	D	1401	9Z9	C73-C74	13.39	1.79	1.53
4	B	1401	9Z9	C73-C74	13.38	1.79	1.53
4	A	1402	9Z9	C73-C74	13.36	1.79	1.53
4	C	1401	9Z9	C73-C74	13.36	1.79	1.53
4	D	1401	9Z9	C02-C06	12.27	1.78	1.55
4	B	1401	9Z9	C02-C06	12.26	1.78	1.55
4	C	1401	9Z9	C02-C06	12.25	1.78	1.55
4	A	1402	9Z9	C02-C06	12.22	1.78	1.55
4	D	1401	9Z9	C10-C09	-11.41	1.29	1.53
4	B	1401	9Z9	C10-C09	-11.39	1.29	1.53
4	A	1402	9Z9	C10-C09	-11.38	1.29	1.53
4	C	1401	9Z9	C10-C09	-11.36	1.29	1.53
4	C	1401	9Z9	C15-C07	-9.74	1.36	1.53
4	D	1401	9Z9	C15-C07	-9.72	1.36	1.53
4	B	1401	9Z9	C15-C07	-9.69	1.36	1.53
4	A	1402	9Z9	C15-C07	-9.67	1.36	1.53
4	B	1401	9Z9	C10-C02	9.11	1.70	1.54
4	D	1401	9Z9	C10-C02	9.05	1.70	1.54

*Continued on next page...*

*Continued from previous page...*

Mol	Chain	Res	Type	Atoms	Z	Observed(Å)	Ideal(Å)
4	C	1401	9Z9	C10-C02	9.05	1.70	1.54
4	A	1402	9Z9	C10-C02	9.04	1.70	1.54
4	C	1401	9Z9	C14-C13	5.31	1.44	1.33
4	D	1401	9Z9	C14-C13	5.29	1.44	1.33
4	B	1401	9Z9	C14-C13	5.28	1.44	1.33
4	A	1402	9Z9	C14-C13	5.27	1.44	1.33
4	B	1401	9Z9	C03-C04	-5.26	1.43	1.54
4	C	1401	9Z9	C03-C04	-5.21	1.43	1.54
4	D	1401	9Z9	C03-C04	-5.20	1.43	1.54
4	A	1402	9Z9	C03-C04	-5.18	1.44	1.54
4	C	1401	9Z9	C09-C08	-4.61	1.46	1.53
4	B	1401	9Z9	C09-C08	-4.59	1.46	1.53
4	A	1402	9Z9	C09-C08	-4.59	1.46	1.53
4	D	1401	9Z9	C09-C08	-4.53	1.46	1.53
4	B	1401	9Z9	C15-C14	3.82	1.58	1.50
4	D	1401	9Z9	C15-C14	3.81	1.58	1.50
4	A	1402	9Z9	C15-C14	3.78	1.58	1.50
4	C	1401	9Z9	C15-C14	3.77	1.58	1.50
4	A	1402	9Z9	C19-C18	3.65	1.61	1.53
4	B	1401	9Z9	C19-C18	3.61	1.61	1.53
4	C	1401	9Z9	C19-C18	3.61	1.61	1.53
4	D	1401	9Z9	C19-C18	3.56	1.61	1.53
4	A	1402	9Z9	C11-C08	3.23	1.61	1.56
4	C	1401	9Z9	C11-C08	3.23	1.61	1.56
4	D	1401	9Z9	C11-C08	3.22	1.61	1.56
4	B	1401	9Z9	C11-C08	3.21	1.61	1.56
4	C	1401	9Z9	C19-C11	-2.94	1.48	1.54
4	A	1402	9Z9	C19-C11	-2.94	1.48	1.54
4	D	1401	9Z9	C19-C11	-2.93	1.48	1.54
4	B	1401	9Z9	C19-C11	-2.91	1.48	1.54
3	A	1401	3PH	O21-C21	2.90	1.42	1.34
3	C	1402	3PH	O21-C21	2.89	1.42	1.34
3	D	1402	3PH	O21-C21	2.89	1.42	1.34
3	B	1402	3PH	O21-C21	2.89	1.42	1.34
4	C	1401	9Z9	C01-C02	2.86	1.59	1.54
4	D	1401	9Z9	C01-C02	2.86	1.59	1.54
3	C	1402	3PH	O31-C31	2.85	1.41	1.33
3	D	1402	3PH	O31-C31	2.84	1.41	1.33
3	A	1401	3PH	O31-C31	2.84	1.41	1.33
3	B	1402	3PH	O31-C31	2.83	1.41	1.33
4	A	1402	9Z9	C01-C02	2.83	1.59	1.54
4	B	1401	9Z9	C18-C17	2.83	1.58	1.51

*Continued on next page...*

Continued from previous page...

Mol	Chain	Res	Type	Atoms	Z	Observed(Å)	Ideal(Å)
4	C	1401	9Z9	C18-C17	2.82	1.58	1.51
4	A	1402	9Z9	C18-C17	2.82	1.58	1.51
4	D	1401	9Z9	C18-C17	2.81	1.58	1.51
4	B	1401	9Z9	C01-C02	2.79	1.59	1.54
4	C	1401	9Z9	C07-C08	-2.72	1.48	1.53
4	D	1401	9Z9	C07-C08	-2.70	1.48	1.53
4	A	1402	9Z9	C07-C08	-2.69	1.48	1.53
4	B	1401	9Z9	C07-C08	-2.69	1.48	1.53
3	B	1402	3PH	O21-C2	-2.47	1.40	1.46
3	D	1402	3PH	O21-C2	-2.46	1.40	1.46
3	C	1402	3PH	O21-C2	-2.45	1.40	1.46
3	A	1401	3PH	O21-C2	-2.44	1.40	1.46
4	D	1401	9Z9	C76-C73	2.40	1.55	1.52
4	B	1401	9Z9	C76-C73	2.40	1.55	1.52
4	C	1401	9Z9	C76-C73	2.36	1.55	1.52
4	A	1402	9Z9	C76-C73	2.36	1.55	1.52
4	D	1401	9Z9	O20-C17	-2.10	1.37	1.43
4	C	1401	9Z9	O20-C17	-2.08	1.37	1.43
4	A	1402	9Z9	O20-C17	-2.08	1.37	1.43
4	B	1401	9Z9	O20-C17	-2.06	1.37	1.43

All (101) bond angle outliers are listed below:

Mol	Chain	Res	Type	Atoms	Z	Observed(°)	Ideal(°)
4	B	1401	9Z9	C76-C73-C74	25.04	167.20	115.69
4	D	1401	9Z9	C76-C73-C74	25.04	167.19	115.69
4	C	1401	9Z9	C76-C73-C74	25.02	167.15	115.69
4	A	1402	9Z9	C76-C73-C74	25.01	167.13	115.69
4	D	1401	9Z9	O72-C73-C76	-15.92	71.70	108.60
4	C	1401	9Z9	O72-C73-C76	-15.88	71.81	108.60
4	B	1401	9Z9	O72-C73-C76	-15.87	71.83	108.60
4	A	1402	9Z9	O72-C73-C76	-15.80	71.98	108.60
4	C	1401	9Z9	O80-C73-O72	9.83	137.18	109.78
4	D	1401	9Z9	O80-C73-O72	9.83	137.17	109.78
4	B	1401	9Z9	O80-C73-O72	9.82	137.15	109.78
4	A	1402	9Z9	O80-C73-O72	9.80	137.07	109.78
4	A	1402	9Z9	C02-C06-C07	-7.81	102.81	114.38
4	B	1401	9Z9	C02-C06-C07	-7.79	102.84	114.38
4	C	1401	9Z9	O80-C73-C74	-7.75	80.20	107.38
4	B	1401	9Z9	O80-C73-C74	-7.74	80.21	107.38
4	A	1402	9Z9	O80-C73-C74	-7.74	80.23	107.38
4	D	1401	9Z9	O80-C73-C74	-7.73	80.24	107.38

Continued on next page...

*Continued from previous page...*

Mol	Chain	Res	Type	Atoms	Z	Observed(°)	Ideal(°)
4	D	1401	9Z9	C02-C06-C07	-7.72	102.95	114.38
4	C	1401	9Z9	C02-C06-C07	-7.70	102.97	114.38
4	A	1402	9Z9	C07-C15-C14	-5.69	104.56	112.73
4	B	1401	9Z9	C07-C15-C14	-5.62	104.66	112.73
4	D	1401	9Z9	C07-C15-C14	-5.59	104.70	112.73
4	C	1401	9Z9	C07-C15-C14	-5.59	104.70	112.73
4	B	1401	9Z9	C10-C02-C06	-5.37	98.93	107.27
4	A	1402	9Z9	C10-C02-C06	-5.37	98.94	107.27
4	D	1401	9Z9	C10-C02-C06	-5.32	99.02	107.27
4	C	1401	9Z9	C10-C02-C06	-5.32	99.02	107.27
4	C	1401	9Z9	C06-C05-C04	-4.69	93.35	102.37
4	A	1402	9Z9	C06-C05-C04	-4.66	93.40	102.37
4	B	1401	9Z9	C06-C05-C04	-4.66	93.40	102.37
4	D	1401	9Z9	C06-C05-C04	-4.65	93.42	102.37
3	A	1401	3PH	O21-C21-C22	4.13	120.41	111.50
3	C	1402	3PH	O21-C21-C22	4.12	120.38	111.50
3	D	1402	3PH	O21-C21-C22	4.07	120.27	111.50
3	B	1402	3PH	O21-C21-C22	4.06	120.24	111.50
4	D	1401	9Z9	C09-C10-C02	-3.93	106.04	112.78
4	A	1402	9Z9	C09-C10-C02	-3.91	106.08	112.78
4	C	1401	9Z9	C09-C10-C02	-3.91	106.08	112.78
4	B	1401	9Z9	C09-C10-C02	-3.90	106.09	112.78
4	C	1401	9Z9	C21-C22-C23	-3.86	108.99	113.88
4	D	1401	9Z9	C09-C08-C11	-3.84	108.02	113.08
4	D	1401	9Z9	C21-C22-C23	-3.82	109.05	113.88
4	B	1401	9Z9	C21-C22-C23	-3.79	109.08	113.88
4	C	1401	9Z9	C09-C08-C11	-3.77	108.11	113.08
4	B	1401	9Z9	C09-C08-C11	-3.75	108.14	113.08
4	A	1402	9Z9	C09-C08-C11	-3.71	108.19	113.08
4	A	1402	9Z9	C21-C22-C23	-3.63	109.28	113.88
4	C	1401	9Z9	C15-C14-C13	-3.55	118.52	125.06
4	B	1401	9Z9	C15-C14-C13	-3.53	118.55	125.06
4	A	1402	9Z9	C15-C14-C13	-3.50	118.61	125.06
4	D	1401	9Z9	C15-C14-C13	-3.49	118.62	125.06
4	B	1401	9Z9	O80-C79-C78	-3.18	107.61	112.18
4	A	1402	9Z9	O80-C79-C78	-3.16	107.63	112.18
4	C	1401	9Z9	C73-C74-C03	3.15	108.50	103.37
4	A	1402	9Z9	O72-C73-C74	-3.14	99.81	104.47
4	C	1401	9Z9	O80-C79-C78	-3.13	107.68	112.18
4	C	1401	9Z9	O72-C73-C74	-3.12	99.85	104.47
4	D	1401	9Z9	C73-C74-C03	3.11	108.43	103.37
4	D	1401	9Z9	O72-C73-C74	-3.11	99.86	104.47

*Continued on next page...*

*Continued from previous page...*

Mol	Chain	Res	Type	Atoms	Z	Observed(°)	Ideal(°)
4	B	1401	9Z9	C73-C74-C03	3.10	108.42	103.37
4	B	1401	9Z9	O72-C73-C74	-3.09	99.89	104.47
4	D	1401	9Z9	O80-C79-C78	-3.08	107.75	112.18
4	A	1402	9Z9	C73-C74-C03	3.07	108.37	103.37
4	B	1401	9Z9	O72-C04-C03	2.83	109.24	105.07
4	A	1402	9Z9	C73-O72-C04	-2.82	100.40	108.28
4	D	1401	9Z9	O72-C04-C03	2.81	109.21	105.07
4	A	1402	9Z9	O72-C04-C03	2.81	109.21	105.07
4	C	1401	9Z9	O72-C04-C03	2.80	109.20	105.07
4	D	1401	9Z9	C73-O72-C04	-2.78	100.53	108.28
4	C	1401	9Z9	C17-C16-C13	-2.77	107.21	111.52
4	A	1402	9Z9	C17-C16-C13	-2.76	107.23	111.52
4	B	1401	9Z9	C73-O72-C04	-2.75	100.61	108.28
4	C	1401	9Z9	C73-O72-C04	-2.74	100.62	108.28
3	B	1402	3PH	O31-C31-C32	2.70	120.37	111.91
3	A	1401	3PH	O31-C31-C32	2.68	120.32	111.91
3	D	1402	3PH	O31-C31-C32	2.68	120.31	111.91
4	C	1401	9Z9	C01-C02-C06	-2.67	106.74	111.71
4	B	1401	9Z9	C01-C02-C06	-2.65	106.77	111.71
4	A	1402	9Z9	C10-C09-C08	2.64	117.70	113.11
3	C	1402	3PH	O31-C31-C32	2.64	120.21	111.91
4	A	1402	9Z9	C01-C02-C06	-2.64	106.78	111.71
4	D	1401	9Z9	C10-C09-C08	2.62	117.66	113.11
4	B	1401	9Z9	C10-C09-C08	2.62	117.66	113.11
4	B	1401	9Z9	C17-C16-C13	-2.61	107.47	111.52
4	D	1401	9Z9	C01-C02-C06	-2.60	106.87	111.71
4	C	1401	9Z9	C10-C09-C08	2.55	117.54	113.11
4	A	1402	9Z9	C01-C02-C03	2.49	117.70	111.63
4	B	1401	9Z9	C01-C02-C03	2.49	117.70	111.63
4	C	1401	9Z9	C01-C02-C03	2.47	117.64	111.63
4	D	1401	9Z9	C17-C16-C13	-2.47	107.69	111.52
4	D	1401	9Z9	C01-C02-C03	2.47	117.63	111.63
4	C	1401	9Z9	C03-C02-C06	2.36	103.69	100.23
4	B	1401	9Z9	C03-C02-C06	2.35	103.69	100.23
4	D	1401	9Z9	C03-C02-C06	2.34	103.67	100.23
4	A	1402	9Z9	C03-C02-C06	2.31	103.63	100.23
4	B	1401	9Z9	C19-C11-C13	-2.23	104.68	108.75
4	D	1401	9Z9	C19-C11-C13	-2.14	104.84	108.75
4	A	1402	9Z9	C19-C11-C13	-2.11	104.89	108.75
4	C	1401	9Z9	C19-C11-C13	-2.10	104.90	108.75
4	B	1401	9Z9	C08-C07-C06	-2.05	106.34	109.09

There are no chirality outliers.

All (116) torsion outliers are listed below:

Mol	Chain	Res	Type	Atoms
3	A	1401	3PH	C1-O11-P-O13
3	A	1401	3PH	C1-O11-P-O14
3	A	1401	3PH	O22-C21-O21-C2
3	A	1401	3PH	C22-C21-O21-C2
3	B	1402	3PH	C1-O11-P-O13
3	B	1402	3PH	C1-O11-P-O14
3	B	1402	3PH	O22-C21-O21-C2
3	B	1402	3PH	C22-C21-O21-C2
3	C	1402	3PH	C1-O11-P-O13
3	C	1402	3PH	C1-O11-P-O14
3	C	1402	3PH	O22-C21-O21-C2
3	C	1402	3PH	C22-C21-O21-C2
3	D	1402	3PH	C1-O11-P-O13
3	D	1402	3PH	C1-O11-P-O14
3	D	1402	3PH	C1-O11-P-O12
3	D	1402	3PH	O22-C21-O21-C2
3	D	1402	3PH	C22-C21-O21-C2
3	D	1402	3PH	C23-C24-C25-C26
3	B	1402	3PH	C23-C24-C25-C26
3	B	1402	3PH	C25-C26-C27-C28
3	D	1402	3PH	C24-C25-C26-C27
3	A	1401	3PH	C23-C24-C25-C26
3	D	1402	3PH	C25-C26-C27-C28
3	C	1402	3PH	C25-C26-C27-C28
3	C	1402	3PH	C23-C24-C25-C26
3	D	1402	3PH	C34-C35-C36-C37
3	B	1402	3PH	C24-C25-C26-C27
3	B	1402	3PH	C34-C35-C36-C37
3	C	1402	3PH	C34-C35-C36-C37
3	A	1401	3PH	C24-C25-C26-C27
3	A	1401	3PH	C35-C36-C37-C38
3	C	1402	3PH	C2B-C2C-C2D-C2E
3	D	1402	3PH	C35-C36-C37-C38
3	B	1402	3PH	C35-C36-C37-C38
3	C	1402	3PH	C35-C36-C37-C38
4	B	1401	9Z9	C22-C21-O20-C17
4	D	1401	9Z9	C22-C21-O20-C17
3	A	1401	3PH	C34-C35-C36-C37
3	C	1402	3PH	C24-C25-C26-C27
3	A	1401	3PH	C2B-C2C-C2D-C2E
3	A	1401	3PH	C25-C26-C27-C28
4	D	1401	9Z9	C21-C22-C23-C48

*Continued on next page...*

*Continued from previous page...*

Mol	Chain	Res	Type	Atoms
3	C	1402	3PH	C32-C33-C34-C35
3	D	1402	3PH	C29-C2A-C2B-C2C
3	B	1402	3PH	C32-C33-C34-C35
3	A	1401	3PH	C32-C33-C34-C35
3	D	1402	3PH	C32-C33-C34-C35
3	B	1402	3PH	C29-C2A-C2B-C2C
3	A	1401	3PH	C33-C34-C35-C36
3	A	1401	3PH	C1-C2-C3-O31
3	B	1402	3PH	C1-C2-C3-O31
3	D	1402	3PH	C1-C2-C3-O31
3	A	1401	3PH	C38-C39-C3A-C3B
3	B	1402	3PH	C2C-C2D-C2E-C2F
3	A	1401	3PH	C2C-C2D-C2E-C2F
3	C	1402	3PH	C2C-C2D-C2E-C2F
3	D	1402	3PH	C2C-C2D-C2E-C2F
3	B	1402	3PH	C33-C34-C35-C36
3	C	1402	3PH	C38-C39-C3A-C3B
3	D	1402	3PH	C38-C39-C3A-C3B
3	B	1402	3PH	C38-C39-C3A-C3B
3	A	1401	3PH	C32-C31-O31-C3
3	D	1402	3PH	C33-C34-C35-C36
3	C	1402	3PH	C21-C22-C23-C24
3	D	1402	3PH	C32-C31-O31-C3
3	C	1402	3PH	C33-C34-C35-C36
3	A	1401	3PH	C1-O11-P-O12
3	B	1402	3PH	C1-O11-P-O12
3	C	1402	3PH	C1-O11-P-O12
3	A	1401	3PH	O32-C31-O31-C3
3	C	1402	3PH	C32-C31-O31-C3
3	B	1402	3PH	C32-C31-O31-C3
3	B	1402	3PH	C21-C22-C23-C24
3	A	1401	3PH	C21-C22-C23-C24
3	D	1402	3PH	C21-C22-C23-C24
3	C	1402	3PH	C1-C2-C3-O31
3	D	1402	3PH	O32-C31-O31-C3
4	B	1401	9Z9	C21-C22-C23-C24
4	B	1401	9Z9	C21-C22-C23-C48
4	D	1401	9Z9	C21-C22-C23-C24
3	D	1402	3PH	O11-C1-C2-O21
3	C	1402	3PH	O32-C31-O31-C3
3	B	1402	3PH	O32-C31-O31-C3
3	B	1402	3PH	O11-C1-C2-C3

*Continued on next page...*

*Continued from previous page...*

Mol	Chain	Res	Type	Atoms
4	B	1401	9Z9	C16-C17-O20-C21
4	D	1401	9Z9	C18-C17-O20-C21
3	A	1401	3PH	O11-C1-C2-C3
3	C	1402	3PH	O11-C1-C2-C3
3	D	1402	3PH	O11-C1-C2-C3
3	C	1402	3PH	C29-C2A-C2B-C2C
3	A	1401	3PH	O11-C1-C2-O21
3	B	1402	3PH	O11-C1-C2-O21
3	C	1402	3PH	O11-C1-C2-O21
3	B	1402	3PH	O21-C2-C3-O31
3	C	1402	3PH	O21-C2-C3-O31
3	D	1402	3PH	O21-C2-C3-O31
3	A	1401	3PH	O21-C2-C3-O31
4	B	1401	9Z9	C18-C17-O20-C21
4	D	1401	9Z9	C16-C17-O20-C21
3	A	1401	3PH	C26-C27-C28-C29
3	C	1402	3PH	C26-C27-C28-C29
3	C	1402	3PH	C28-C29-C2A-C2B
3	A	1401	3PH	C22-C23-C24-C25
3	A	1401	3PH	C36-C37-C38-C39
3	C	1402	3PH	C22-C23-C24-C25
3	B	1402	3PH	C36-C37-C38-C39
3	C	1402	3PH	C36-C37-C38-C39
3	B	1402	3PH	C26-C27-C28-C29
3	D	1402	3PH	C36-C37-C38-C39
4	A	1402	9Z9	C16-C17-O20-C21
3	D	1402	3PH	C26-C27-C28-C29
4	C	1401	9Z9	C22-C23-C48-O49
3	B	1402	3PH	O21-C21-C22-C23
3	D	1402	3PH	O21-C21-C22-C23
3	D	1402	3PH	O22-C21-C22-C23
3	B	1402	3PH	O22-C21-C22-C23

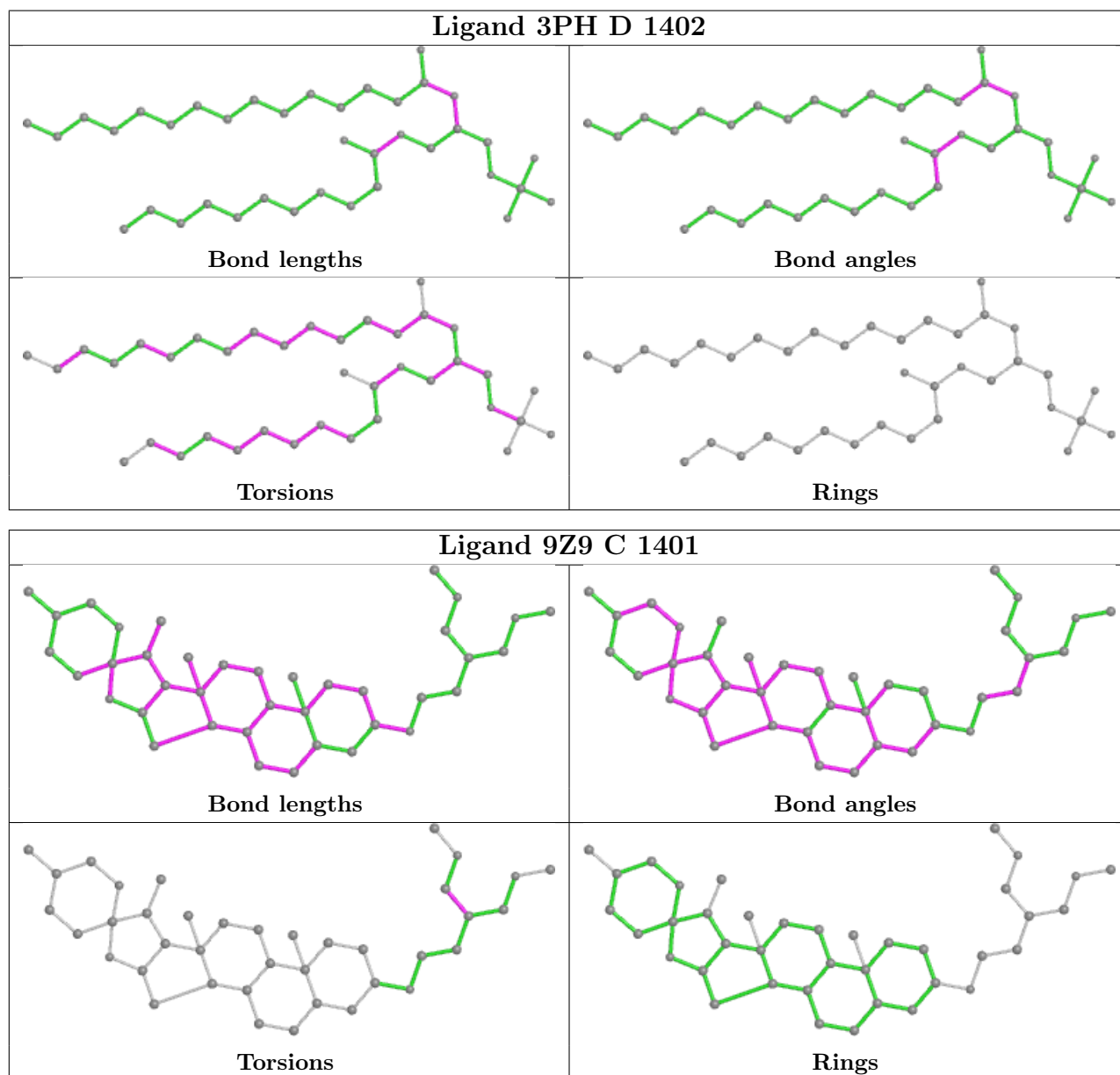
There are no ring outliers.

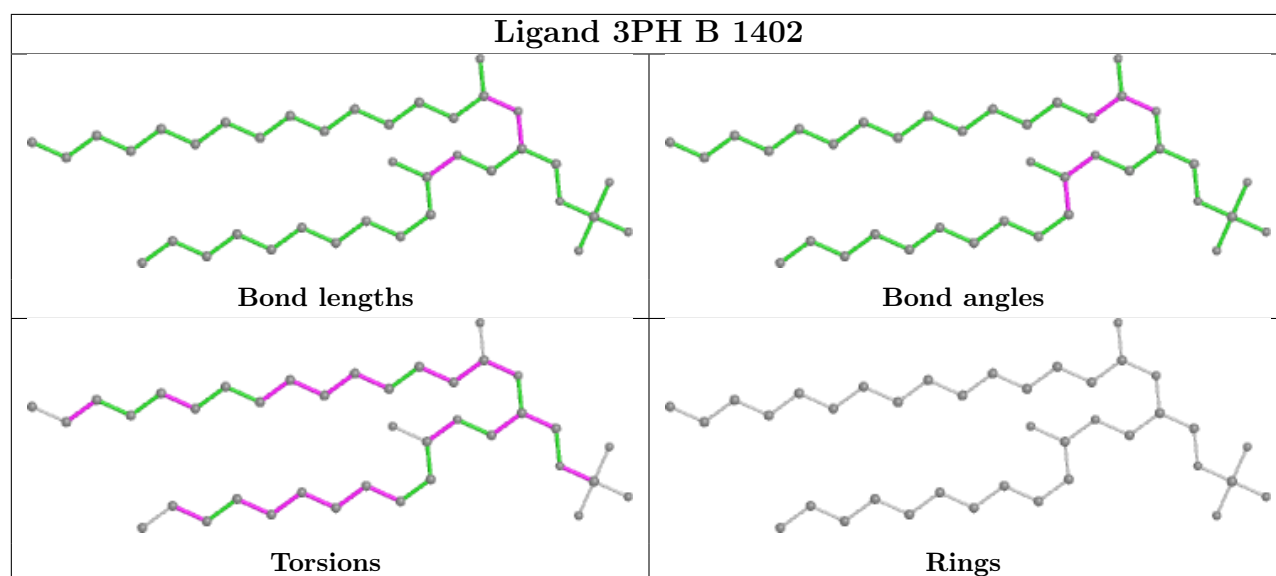
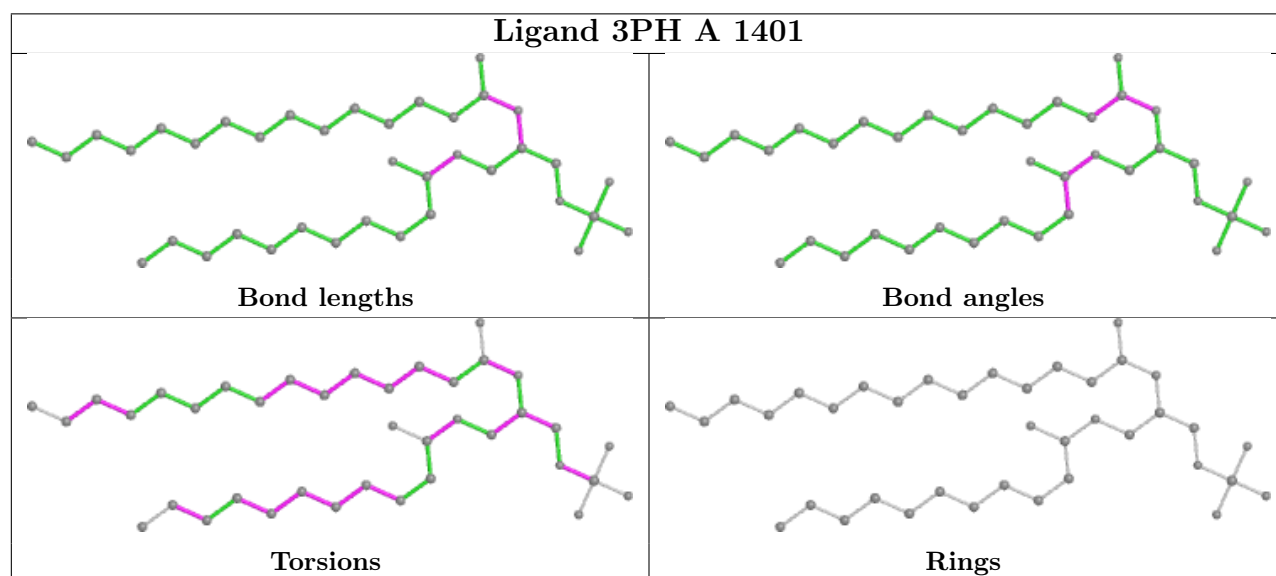
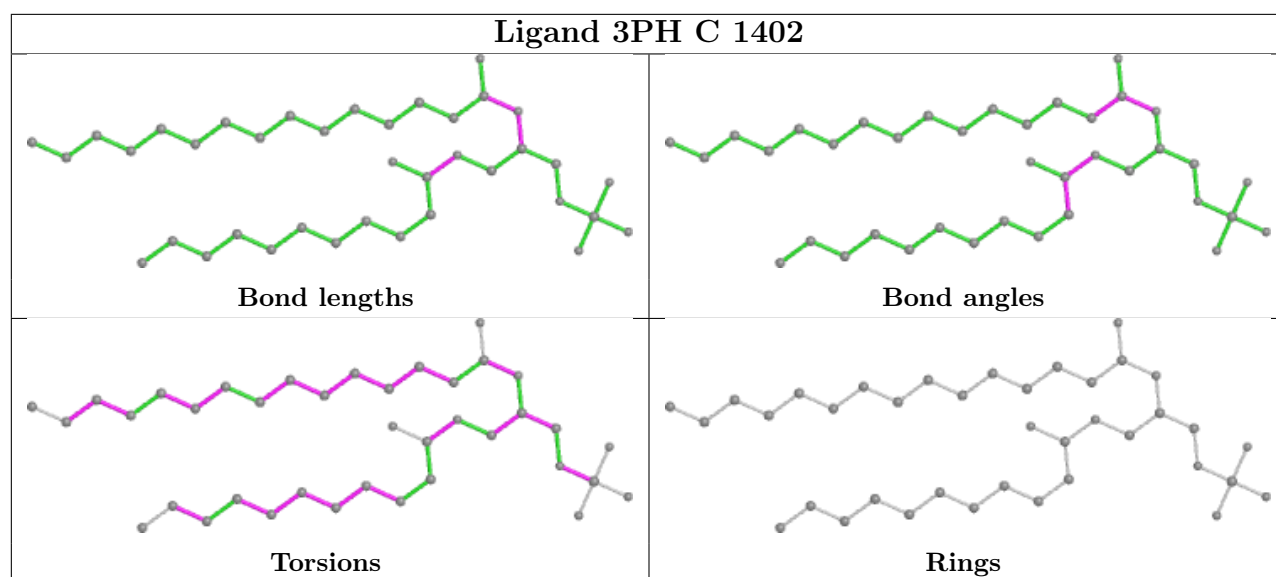
5 monomers are involved in 62 short contacts:

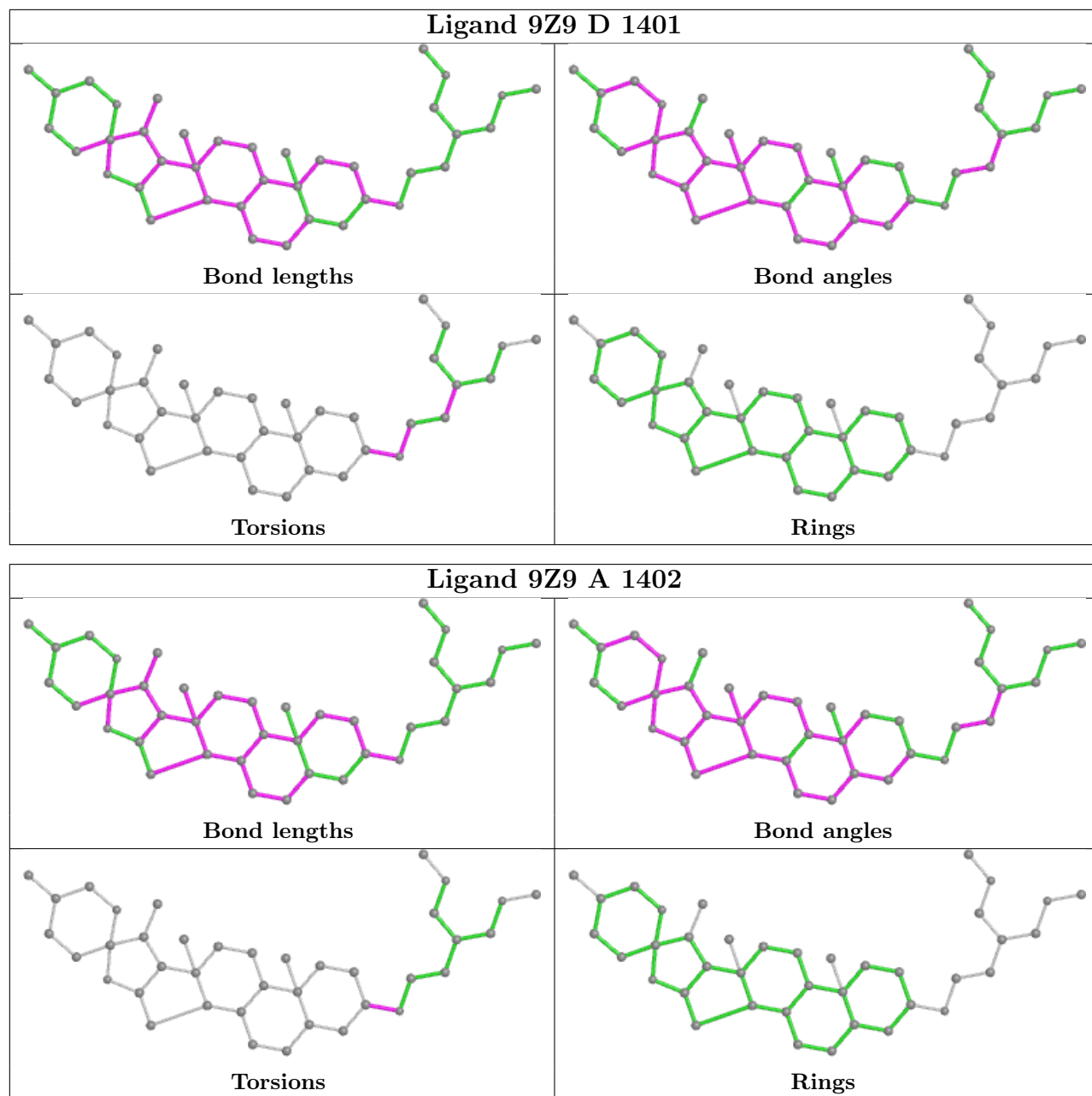
Mol	Chain	Res	Type	Clashes	Symm-Clashes
4	C	1401	9Z9	15	0
3	C	1402	3PH	1	0
4	D	1401	9Z9	15	0
4	A	1402	9Z9	15	0
4	B	1401	9Z9	16	0

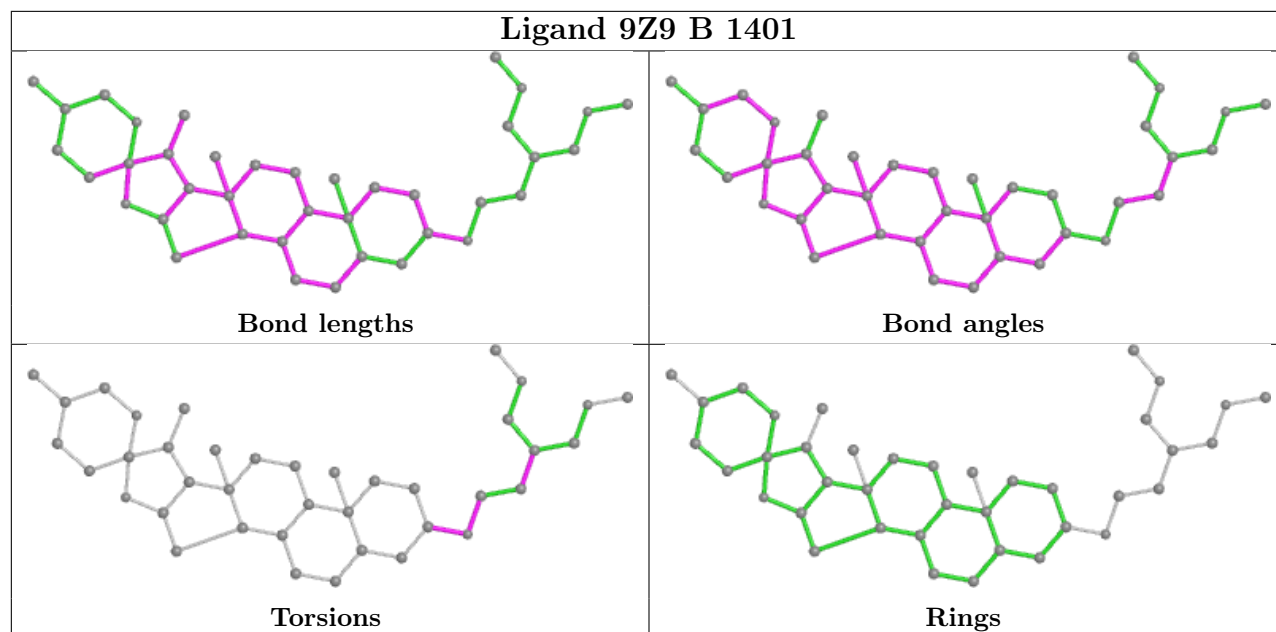


The following is a two-dimensional graphical depiction of Mogul quality analysis of bond lengths, bond angles, torsion angles, and ring geometry for all instances of the Ligand of Interest. In addition, ligands with molecular weight > 250 and outliers as shown on the validation Tables will also be included. For torsion angles, if less than 5% of the Mogul distribution of torsion angles is within 10 degrees of the torsion angle in question, then that torsion angle is considered an outlier. Any bond that is central to one or more torsion angles identified as an outlier by Mogul will be highlighted in the graph. For rings, the root-mean-square deviation (RMSD) between the ring in question and similar rings identified by Mogul is calculated over all ring torsion angles. If the average RMSD is greater than 60 degrees and the minimal RMSD between the ring in question and any Mogul-identified rings is also greater than 60 degrees, then that ring is considered an outlier. The outliers are highlighted in purple. The color gray indicates Mogul did not find sufficient equivalents in the CSD to analyse the geometry.









## 5.7 Other polymers [i](#)

There are no such residues in this entry.

## 5.8 Polymer linkage issues [i](#)

There are no chain breaks in this entry.

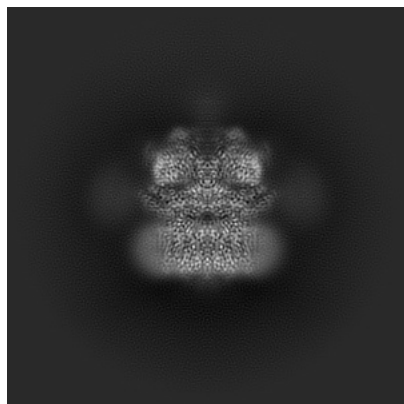
## 6 Map visualisation [i](#)

This section contains visualisations of the EMDB entry EMD-27338. These allow visual inspection of the internal detail of the map and identification of artifacts.

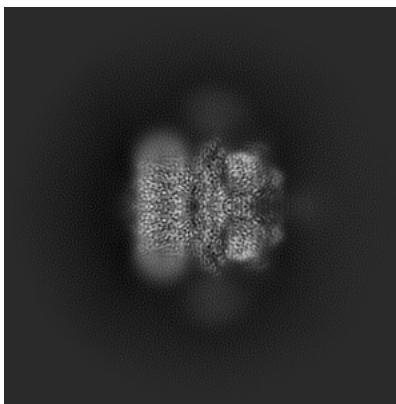
Images derived from a raw map, generated by summing the deposited half-maps, are presented below the corresponding image components of the primary map to allow further visual inspection and comparison with those of the primary map.

### 6.1 Orthogonal projections [i](#)

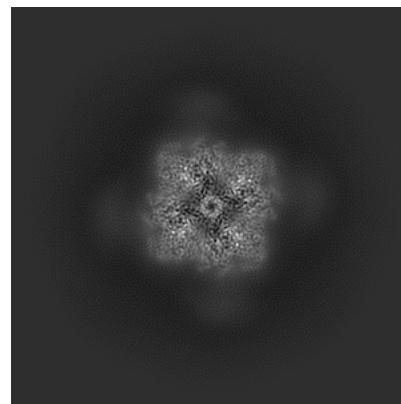
#### 6.1.1 Primary map



X

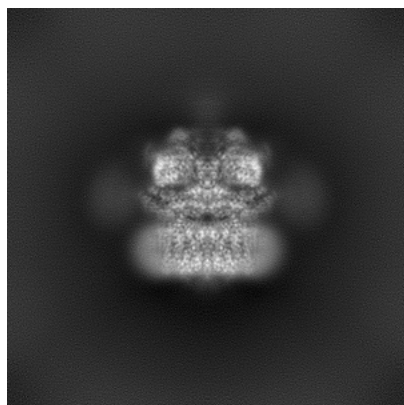


Y

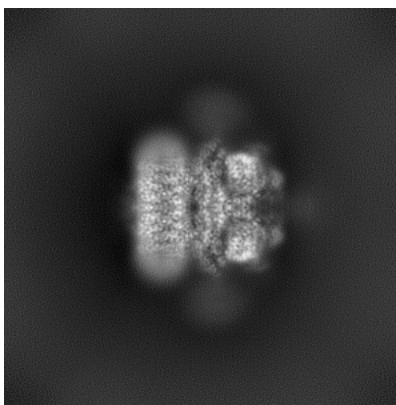


Z

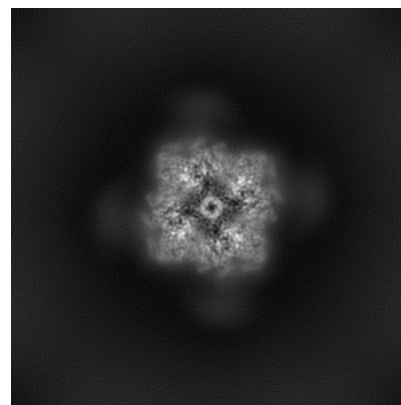
#### 6.1.2 Raw map



X



Y

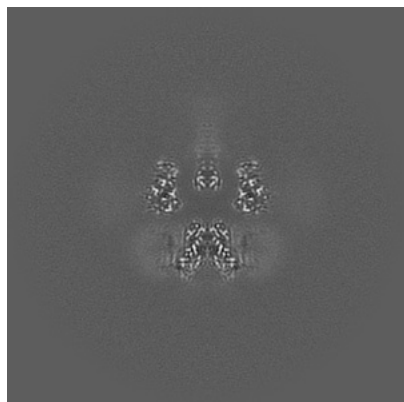


Z

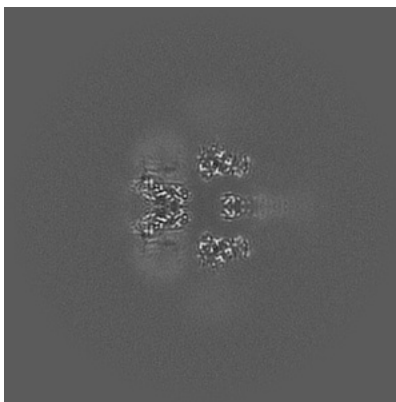
The images above show the map projected in three orthogonal directions.

## 6.2 Central slices [i](#)

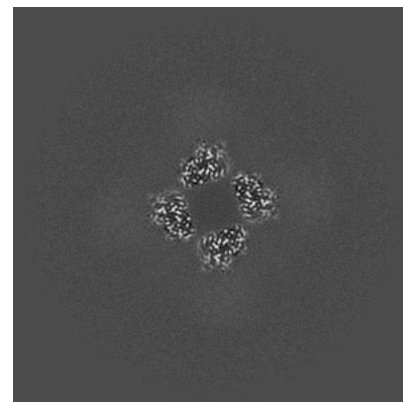
### 6.2.1 Primary map



X Index: 220

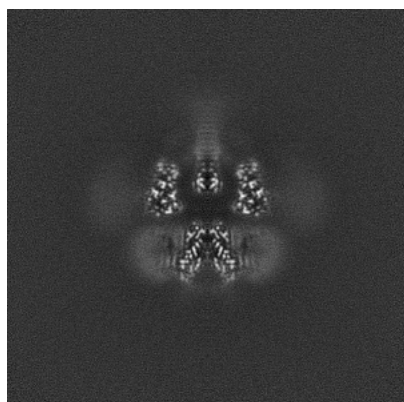


Y Index: 220

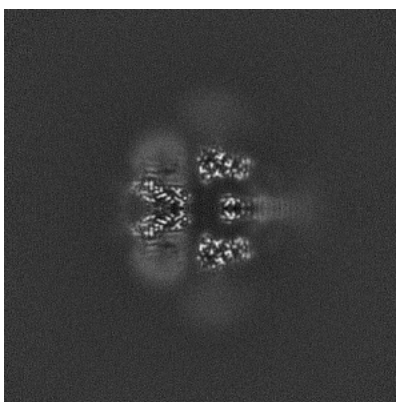


Z Index: 220

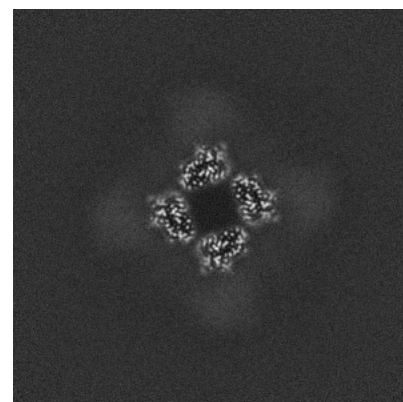
### 6.2.2 Raw map



X Index: 220



Y Index: 220

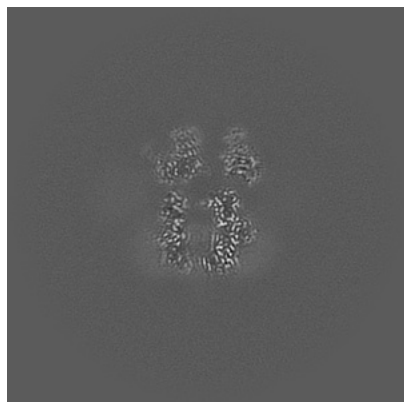


Z Index: 220

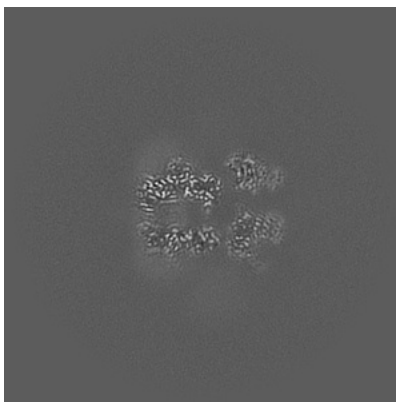
The images above show central slices of the map in three orthogonal directions.

## 6.3 Largest variance slices [i](#)

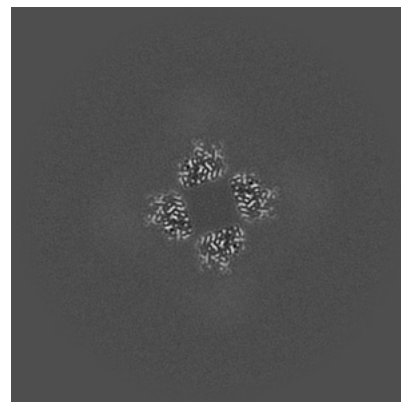
### 6.3.1 Primary map



X Index: 251



Y Index: 189

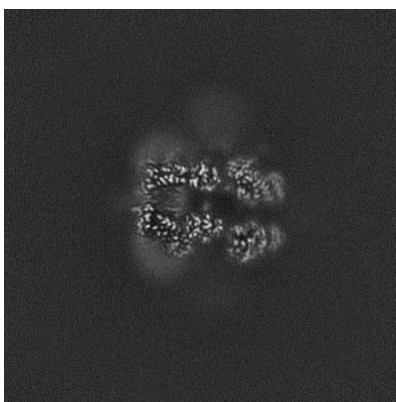


Z Index: 221

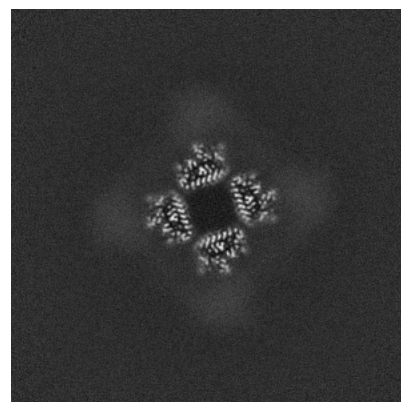
### 6.3.2 Raw map



X Index: 192



Y Index: 248

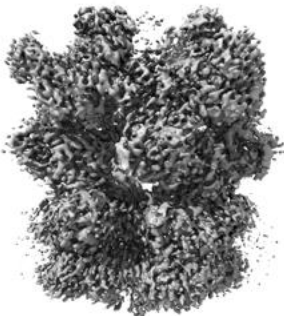


Z Index: 222

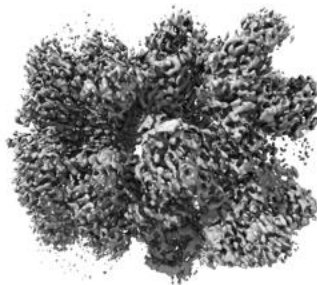
The images above show the largest variance slices of the map in three orthogonal directions.

## 6.4 Orthogonal surface views [i](#)

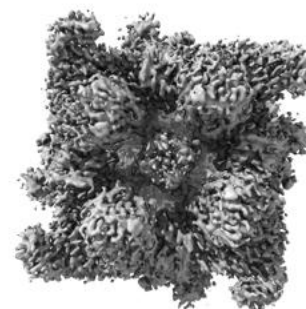
### 6.4.1 Primary map



X



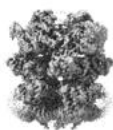
Y



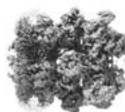
Z

The images above show the 3D surface view of the map at the recommended contour level 0.3. These images, in conjunction with the slice images, may facilitate assessment of whether an appropriate contour level has been provided.

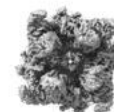
### 6.4.2 Raw map



X



Y



Z

These images show the 3D surface of the raw map. The raw map's contour level was selected so that its surface encloses the same volume as the primary map does at its recommended contour level.

## 6.5 Mask visualisation [i](#)

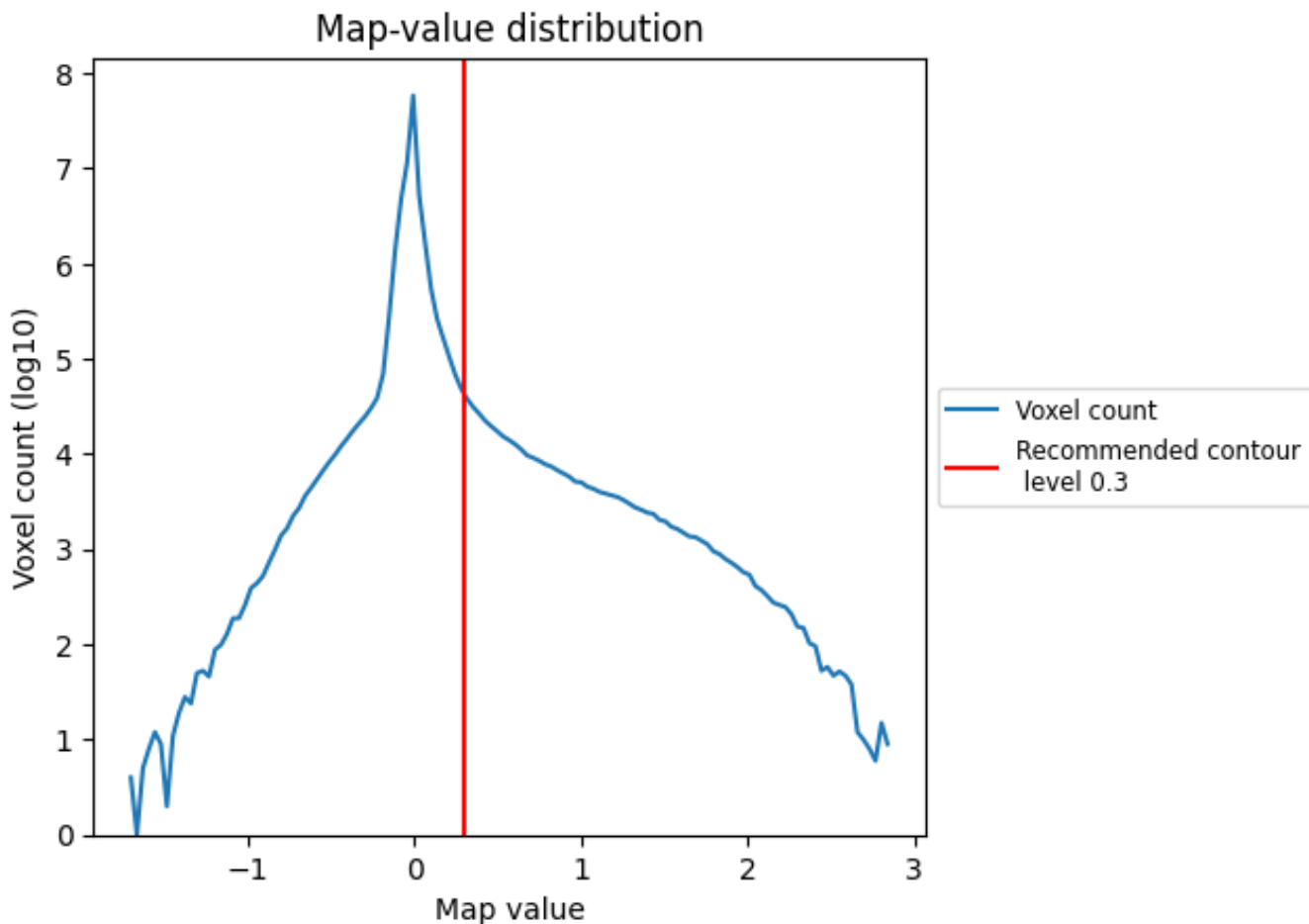
This section was not generated. No masks/segmentation were deposited.



## 7 Map analysis [i](#)

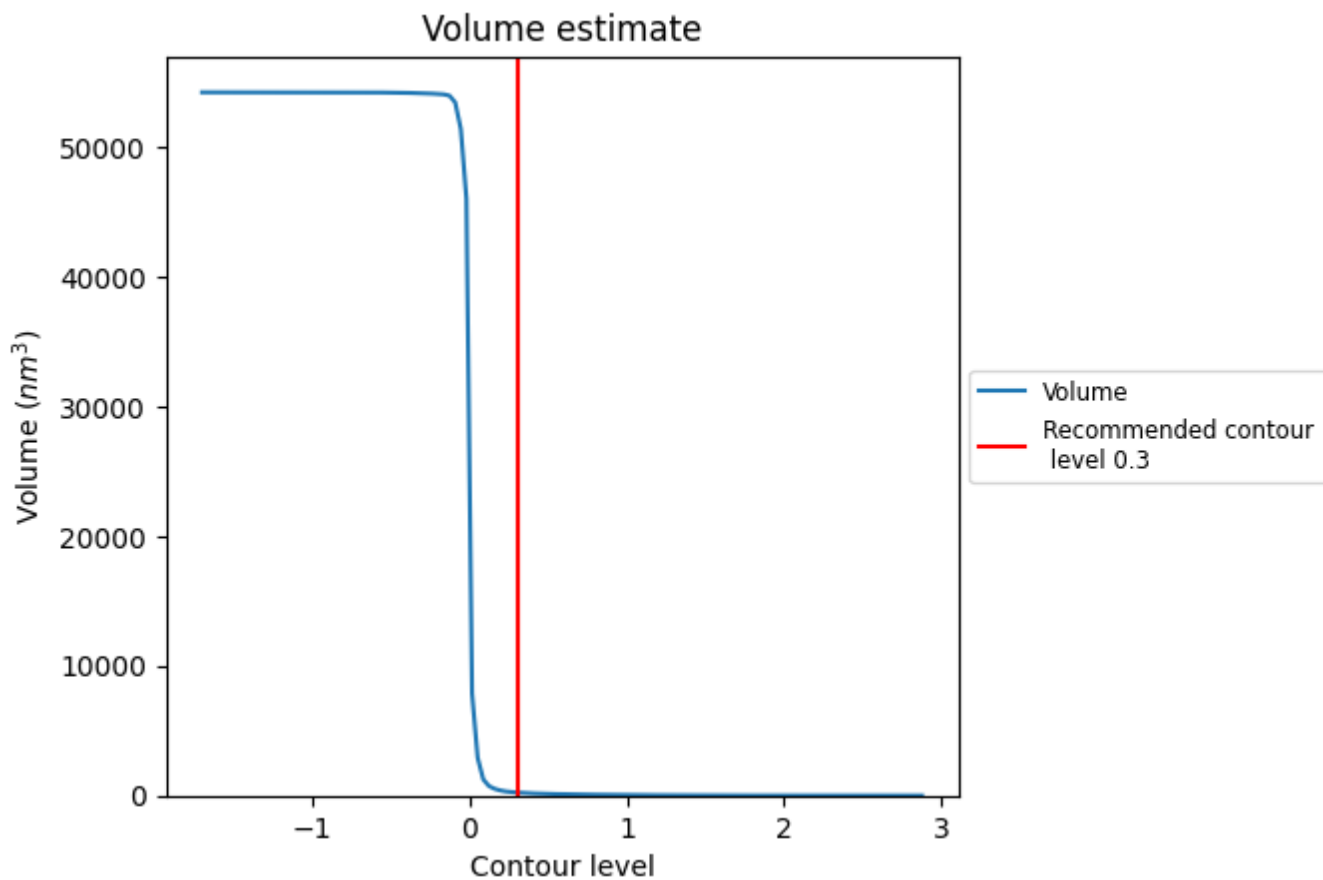
This section contains the results of statistical analysis of the map.

### 7.1 Map-value distribution [i](#)



The map-value distribution is plotted in 128 intervals along the x-axis. The y-axis is logarithmic. A spike in this graph at zero usually indicates that the volume has been masked.

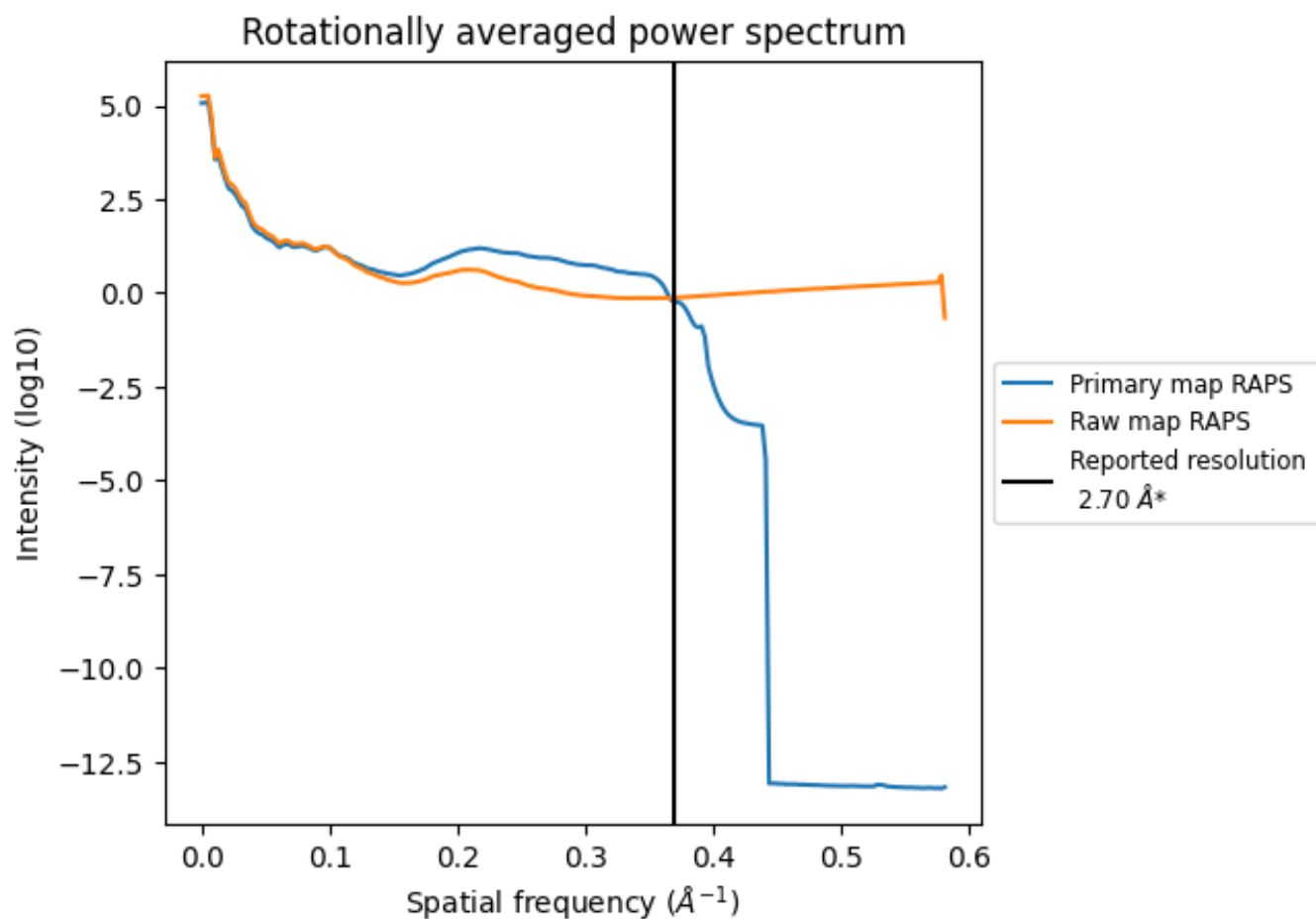
## 7.2 Volume estimate [i](#)



The volume at the recommended contour level is 231 nm<sup>3</sup>; this corresponds to an approximate mass of 209 kDa.

The volume estimate graph shows how the enclosed volume varies with the contour level. The recommended contour level is shown as a vertical line and the intersection between the line and the curve gives the volume of the enclosed surface at the given level.

### 7.3 Rotationally averaged power spectrum [i](#)

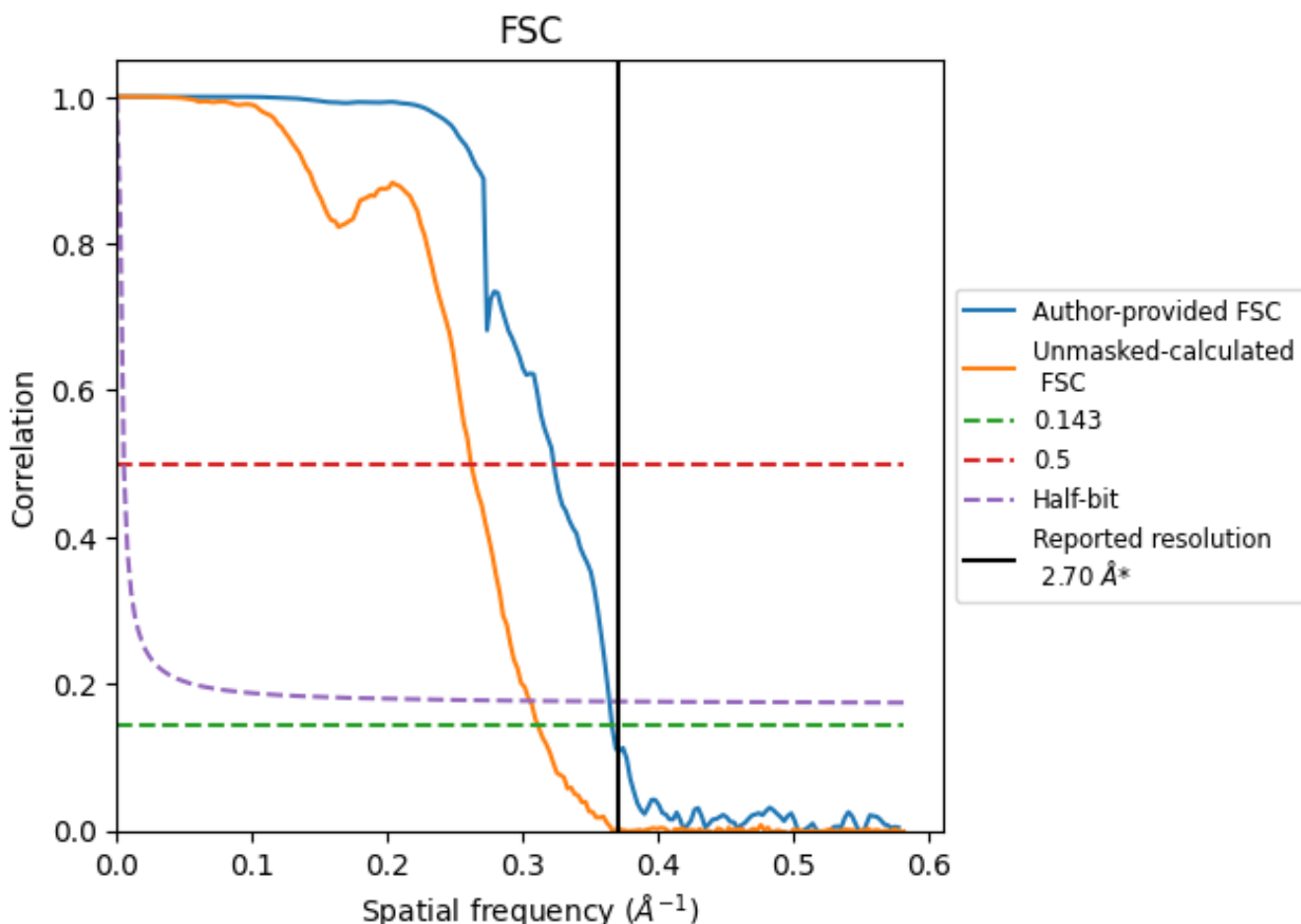


\*Reported resolution corresponds to spatial frequency of 0.370 Å<sup>-1</sup>

## 8 Fourier-Shell correlation [i](#)

Fourier-Shell Correlation (FSC) is the most commonly used method to estimate the resolution of single-particle and subtomogram-averaged maps. The shape of the curve depends on the imposed symmetry, mask and whether or not the two 3D reconstructions used were processed from a common reference. The reported resolution is shown as a black line. A curve is displayed for the half-bit criterion in addition to lines showing the 0.143 gold standard cut-off and 0.5 cut-off.

### 8.1 FSC [i](#)



\*Reported resolution corresponds to spatial frequency of  $0.370 \text{\AA}^{-1}$

## 8.2 Resolution estimates [i](#)

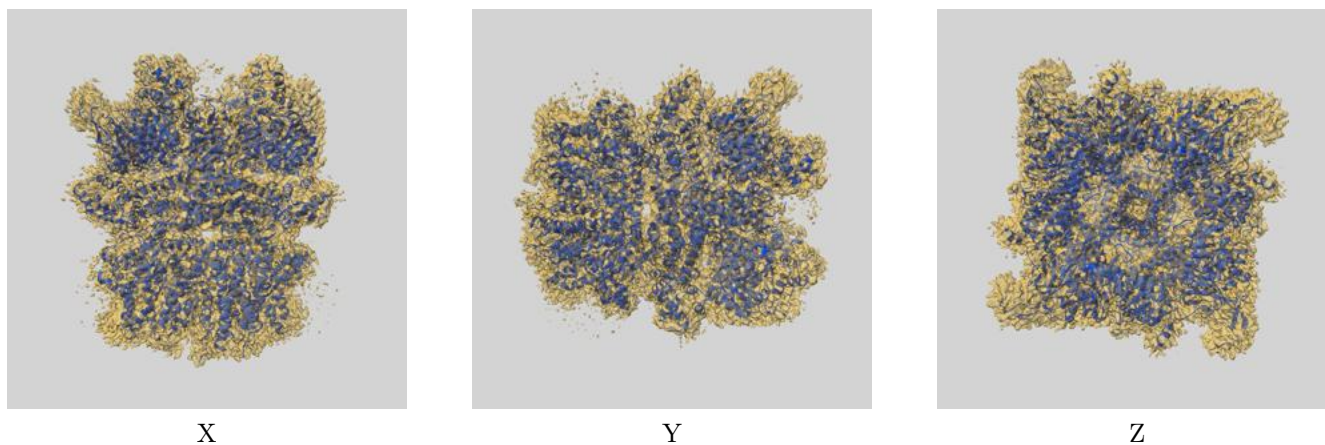
Resolution estimate (Å)	Estimation criterion (FSC cut-off)		
	0.143	0.5	Half-bit
Reported by author	2.70	-	-
Author-provided FSC curve	2.73	3.10	2.75
Unmasked-calculated*	3.21	3.82	3.28

\*Resolution estimate based on FSC curve calculated by comparison of deposited half-maps. The value from deposited half-maps intersecting FSC 0.143 CUT-OFF 3.21 differs from the reported value 2.7 by more than 10 %

## 9 Map-model fit [i](#)

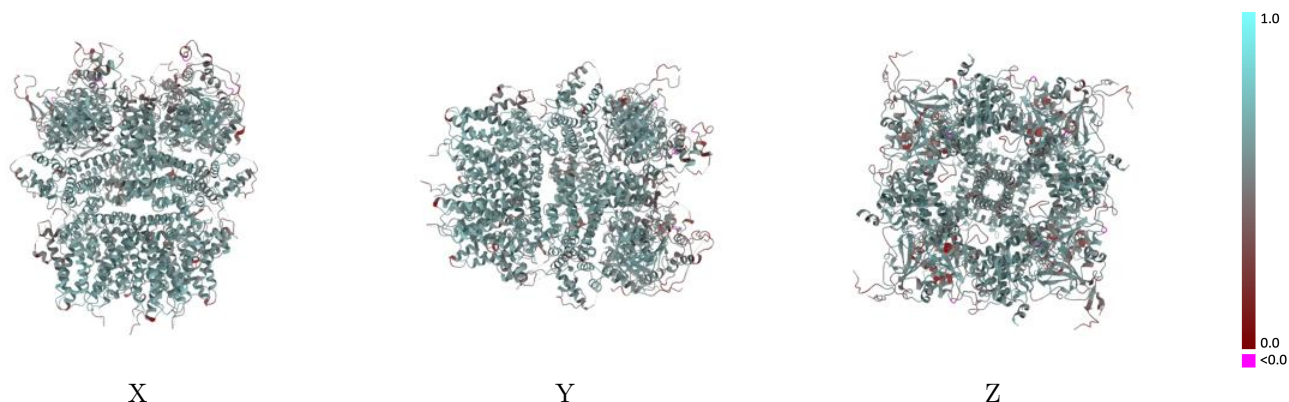
This section contains information regarding the fit between EMDB map EMD-27338 and PDB model 8DDQ. Per-residue inclusion information can be found in section [3](#) on page [6](#).

### 9.1 Map-model overlay [i](#)



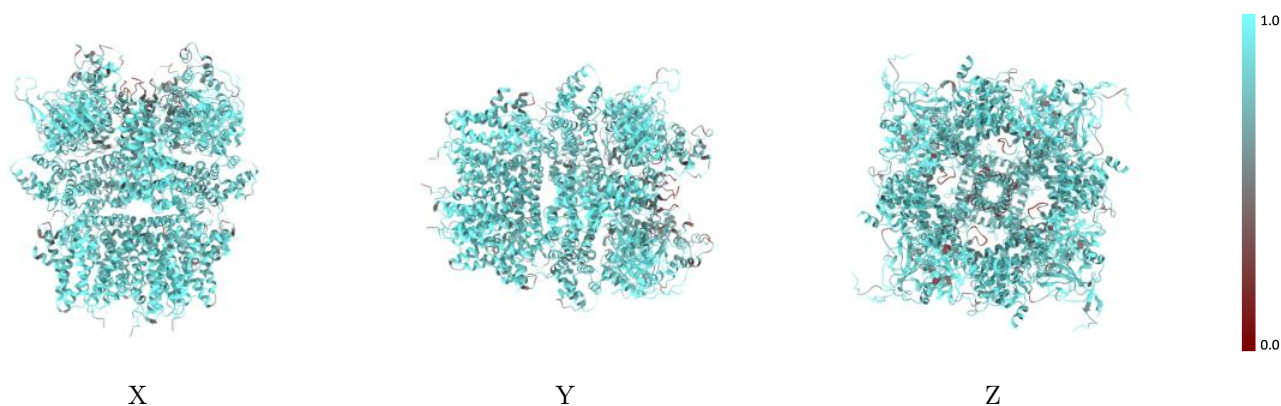
The images above show the 3D surface view of the map at the recommended contour level 0.3 at 50% transparency in yellow overlaid with a ribbon representation of the model coloured in blue. These images allow for the visual assessment of the quality of fit between the atomic model and the map.

## 9.2 Q-score mapped to coordinate model [i](#)



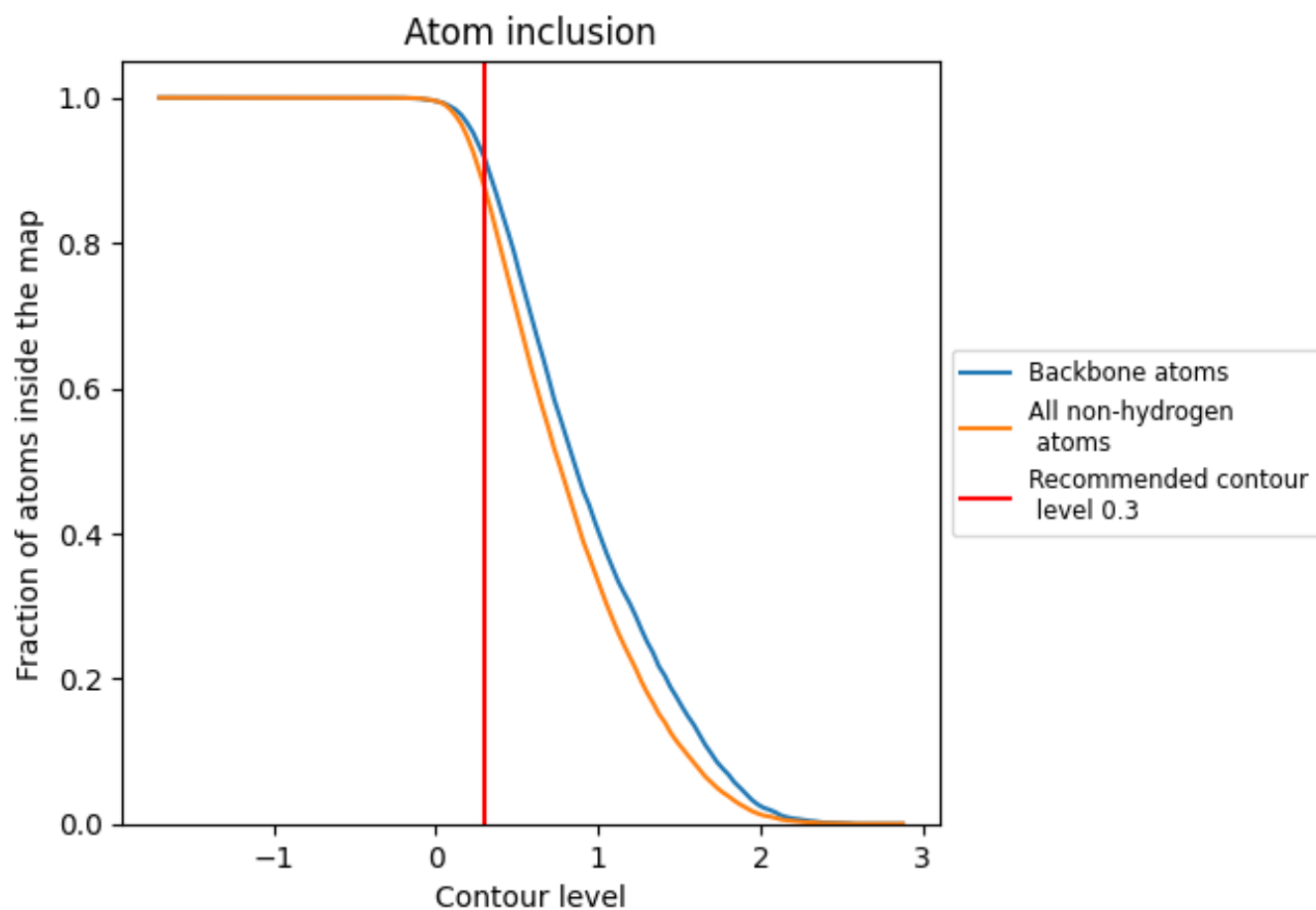
The images above show the model with each residue coloured according its Q-score. This shows their resolvability in the map with higher Q-score values reflecting better resolvability. Please note: Q-score is calculating the resolvability of atoms, and thus high values are only expected at resolutions at which atoms can be resolved. Low Q-score values may therefore be expected for many entries.

## 9.3 Atom inclusion mapped to coordinate model [i](#)



The images above show the model with each residue coloured according to its atom inclusion. This shows to what extent they are inside the map at the recommended contour level (0.3).

## 9.4 Atom inclusion [i](#)





















At the recommended contour level, 92% of all backbone atoms, 88% of all non-hydrogen atoms, are inside the map.



## 9.5 Map-model fit summary [i](#)

The table lists the average atom inclusion at the recommended contour level (0.3) and Q-score for the entire model and for each chain.

Chain	Atom inclusion	Q-score
All	 0.8769	 0.5620
A	 0.8761	 0.5640
B	 0.8778	 0.5630
C	 0.8779	 0.5640
D	 0.8783	 0.5630
E	 0.8471	 0.3960
F	 0.7765	 0.3790
G	 0.8353	 0.3900
H	 0.8118	 0.3910

