



Full wwPDB X-ray Structure Validation Report ⓘ

May 18, 2020 – 11:02 am BST

PDB ID : 6DEJ
Title : The structure of HcRed7, a brighter and red-shifted HcRed variant
Authors : Wannier, T.M.; Mayo, S.L.
Deposited on : 2018-05-12
Resolution : 1.63 Å(reported)

This is a Full wwPDB X-ray Structure Validation Report for a publicly released PDB entry.

We welcome your comments at validation@mail.wwpdb.org

A user guide is available at

<https://www.wwpdb.org/validation/2017/XrayValidationReportHelp>

with specific help available everywhere you see the ⓘ symbol.

The following versions of software and data (see [references ⓘ](#)) were used in the production of this report:

MolProbity : 4.02b-467
Mogul : 1.8.5 (274361), CSD as541be (2020)
Xtriage (Phenix) : 1.13
EDS : 2.11
buster-report : 1.1.7 (2018)
Percentile statistics : 20191225.v01 (using entries in the PDB archive December 25th 2019)
Refmac : 5.8.0158
CCP4 : 7.0.044 (Gargrove)
Ideal geometry (proteins) : Engh & Huber (2001)
Ideal geometry (DNA, RNA) : Parkinson et al. (1996)
Validation Pipeline (wwPDB-VP) : 2.11

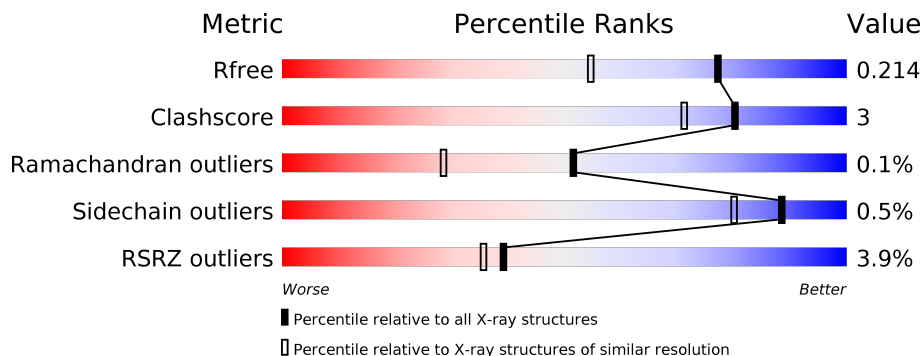
1 Overall quality at a glance i

The following experimental techniques were used to determine the structure:

X-RAY DIFFRACTION

The reported resolution of this entry is 1.63 Å.

Percentile scores (ranging between 0-100) for global validation metrics of the entry are shown in the following graphic. The table shows the number of entries on which the scores are based.



Metric	Whole archive (#Entries)	Similar resolution (#Entries, resolution range(Å))
R_{free}	130704	4693 (1.64-1.60)
Clashscore	141614	5002 (1.64-1.60)
Ramachandran outliers	138981	4888 (1.64-1.60)
Sidechain outliers	138945	4887 (1.64-1.60)
RSRZ outliers	127900	4609 (1.64-1.60)

The table below summarises the geometric issues observed across the polymeric chains and their fit to the electron density. The red, orange, yellow and green segments on the lower bar indicate the fraction of residues that contain outliers for ≥ 3 , 2, 1 and 0 types of geometric quality criteria respectively. A grey segment represents the fraction of residues that are not modelled. The numeric value for each fraction is indicated below the corresponding segment, with a dot representing fractions $\leq 5\%$. The upper red bar (where present) indicates the fraction of residues that have poor fit to the electron density. The numeric value is given above the bar.

Mol	Chain	Length	Quality of chain
1	A	235	<div style="display: flex; align-items: center;"> <div style="width: 4%; height: 10px; background-color: red; margin-right: 5px;"></div> <div style="width: 91%; height: 10px; background-color: green; margin-right: 5px;"></div> <div style="width: 5%; height: 10px; background-color: yellow; margin-right: 5px;"></div> <div style="width: 5%; height: 10px; background-color: grey;"></div> </div>
1	B	235	<div style="display: flex; align-items: center;"> <div style="width: 3%; height: 10px; background-color: red; margin-right: 5px;"></div> <div style="width: 89%; height: 10px; background-color: green; margin-right: 5px;"></div> <div style="width: 7%; height: 10px; background-color: yellow; margin-right: 5px;"></div> <div style="width: 5%; height: 10px; background-color: grey;"></div> </div>
1	C	235	<div style="display: flex; align-items: center;"> <div style="width: 3%; height: 10px; background-color: red; margin-right: 5px;"></div> <div style="width: 89%; height: 10px; background-color: green; margin-right: 5px;"></div> <div style="width: 6%; height: 10px; background-color: yellow; margin-right: 5px;"></div> <div style="width: 5%; height: 10px; background-color: grey;"></div> </div>
1	D	235	<div style="display: flex; align-items: center;"> <div style="width: 4%; height: 10px; background-color: red; margin-right: 5px;"></div> <div style="width: 89%; height: 10px; background-color: green; margin-right: 5px;"></div> <div style="width: 5%; height: 10px; background-color: yellow; margin-right: 5px;"></div> <div style="width: 5%; height: 10px; background-color: grey;"></div> </div>

The following table lists non-polymeric compounds, carbohydrate monomers and non-standard residues in protein, DNA, RNA chains that are outliers for geometric or electron-density-fit crite-

ria:

Mol	Type	Chain	Res	Chirality	Geometry	Clashes	Electron density
4	CL	D	301	-	-	X	-

2 Entry composition i

There are 5 unique types of molecules in this entry. The entry contains 8225 atoms, of which 0 are hydrogens and 0 are deuteriums.

In the tables below, the ZeroOcc column contains the number of atoms modelled with zero occupancy, the AltConf column contains the number of residues with at least one atom in alternate conformation and the Trace column contains the number of residues modelled with at most 2 atoms.

- Molecule 1 is a protein called GFP-like non-fluorescent chromoprotein.

Mol	Chain	Residues	Atoms					ZeroOcc	AltConf	Trace
			Total	C	N	O	S			
1	A	224	1811	1153	306	338	14	0	3	0
1	B	224	1809	1153	307	333	16	0	4	0
1	C	224	1817	1158	310	334	15	0	4	0
1	D	223	1805	1149	308	334	14	0	3	0

There are 84 discrepancies between the modelled and reference sequences:

Chain	Residue	Modelled	Actual	Comment	Reference
A	-8	MET	-	initiating methionine	UNP Q95W85
A	-7	HIS	-	expression tag	UNP Q95W85
A	-6	HIS	-	expression tag	UNP Q95W85
A	-5	HIS	-	expression tag	UNP Q95W85
A	-4	HIS	-	expression tag	UNP Q95W85
A	-3	HIS	-	expression tag	UNP Q95W85
A	-2	HIS	-	expression tag	UNP Q95W85
A	-1	GLY	-	expression tag	UNP Q95W85
A	0	SER	-	expression tag	UNP Q95W85
A	1	GLY	-	expression tag	UNP Q95W85
A	37	ALA	THR	engineered mutation	UNP Q95W85
A	64	CRU	GLU	chromophore	UNP Q95W85
A	64	CRU	TYR	chromophore	UNP Q95W85
A	64	CRU	GLY	chromophore	UNP Q95W85
A	68	LYS	ARG	engineered mutation	UNP Q95W85
A	123	HIS	LEU	engineered mutation	UNP Q95W85
A	144	SER	CYS	engineered mutation	UNP Q95W85
A	169	HIS	ARG	engineered mutation	UNP Q95W85
A	174	HIS	LEU	engineered mutation	UNP Q95W85
A	197	TYR	ILE	engineered mutation	UNP Q95W85
A	202	LEU	PRO	engineered mutation	UNP Q95W85

Continued on next page...

Continued from previous page...

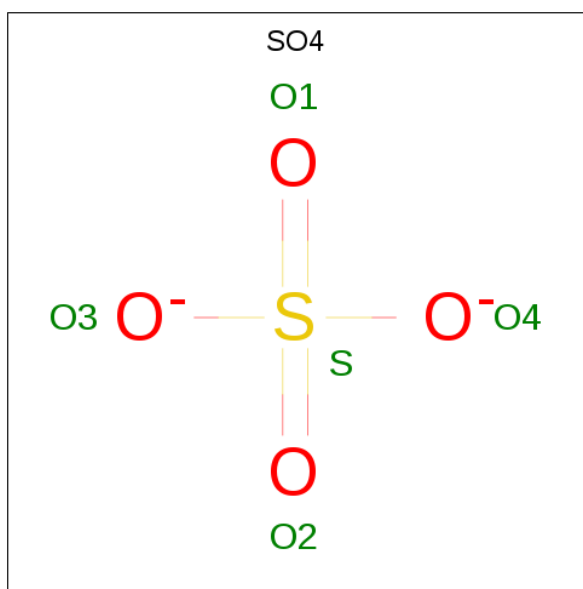
Chain	Residue	Modelled	Actual	Comment	Reference
B	-8	MET	-	initiating methionine	UNP Q95W85
B	-7	HIS	-	expression tag	UNP Q95W85
B	-6	HIS	-	expression tag	UNP Q95W85
B	-5	HIS	-	expression tag	UNP Q95W85
B	-4	HIS	-	expression tag	UNP Q95W85
B	-3	HIS	-	expression tag	UNP Q95W85
B	-2	HIS	-	expression tag	UNP Q95W85
B	-1	GLY	-	expression tag	UNP Q95W85
B	0	SER	-	expression tag	UNP Q95W85
B	1	GLY	-	expression tag	UNP Q95W85
B	37	ALA	THR	engineered mutation	UNP Q95W85
B	64	CRU	GLU	chromophore	UNP Q95W85
B	64	CRU	TYR	chromophore	UNP Q95W85
B	64	CRU	GLY	chromophore	UNP Q95W85
B	68	LYS	ARG	engineered mutation	UNP Q95W85
B	123	HIS	LEU	engineered mutation	UNP Q95W85
B	144	SER	CYS	engineered mutation	UNP Q95W85
B	169	HIS	ARG	engineered mutation	UNP Q95W85
B	174	HIS	LEU	engineered mutation	UNP Q95W85
B	197	TYR	ILE	engineered mutation	UNP Q95W85
B	202	LEU	PRO	engineered mutation	UNP Q95W85
C	-8	MET	-	initiating methionine	UNP Q95W85
C	-7	HIS	-	expression tag	UNP Q95W85
C	-6	HIS	-	expression tag	UNP Q95W85
C	-5	HIS	-	expression tag	UNP Q95W85
C	-4	HIS	-	expression tag	UNP Q95W85
C	-3	HIS	-	expression tag	UNP Q95W85
C	-2	HIS	-	expression tag	UNP Q95W85
C	-1	GLY	-	expression tag	UNP Q95W85
C	0	SER	-	expression tag	UNP Q95W85
C	1	GLY	-	expression tag	UNP Q95W85
C	37	ALA	THR	engineered mutation	UNP Q95W85
C	64	CRU	GLU	chromophore	UNP Q95W85
C	64	CRU	TYR	chromophore	UNP Q95W85
C	64	CRU	GLY	chromophore	UNP Q95W85
C	68	LYS	ARG	engineered mutation	UNP Q95W85
C	123	HIS	LEU	engineered mutation	UNP Q95W85
C	144	SER	CYS	engineered mutation	UNP Q95W85
C	169	HIS	ARG	engineered mutation	UNP Q95W85
C	174	HIS	LEU	engineered mutation	UNP Q95W85
C	197	TYR	ILE	engineered mutation	UNP Q95W85
C	202	LEU	PRO	engineered mutation	UNP Q95W85

Continued on next page...

Continued from previous page...

Chain	Residue	Modelled	Actual	Comment	Reference
D	-8	MET	-	initiating methionine	UNP Q95W85
D	-7	HIS	-	expression tag	UNP Q95W85
D	-6	HIS	-	expression tag	UNP Q95W85
D	-5	HIS	-	expression tag	UNP Q95W85
D	-4	HIS	-	expression tag	UNP Q95W85
D	-3	HIS	-	expression tag	UNP Q95W85
D	-2	HIS	-	expression tag	UNP Q95W85
D	-1	GLY	-	expression tag	UNP Q95W85
D	0	SER	-	expression tag	UNP Q95W85
D	1	GLY	-	expression tag	UNP Q95W85
D	37	ALA	THR	engineered mutation	UNP Q95W85
D	64	CRU	GLU	chromophore	UNP Q95W85
D	64	CRU	TYR	chromophore	UNP Q95W85
D	64	CRU	GLY	chromophore	UNP Q95W85
D	68	LYS	ARG	engineered mutation	UNP Q95W85
D	123	HIS	LEU	engineered mutation	UNP Q95W85
D	144	SER	CYS	engineered mutation	UNP Q95W85
D	169	HIS	ARG	engineered mutation	UNP Q95W85
D	174	HIS	LEU	engineered mutation	UNP Q95W85
D	197	TYR	ILE	engineered mutation	UNP Q95W85
D	202	LEU	PRO	engineered mutation	UNP Q95W85

- Molecule 2 is SULFATE ION (three-letter code: SO₄) (formula: O₄S).



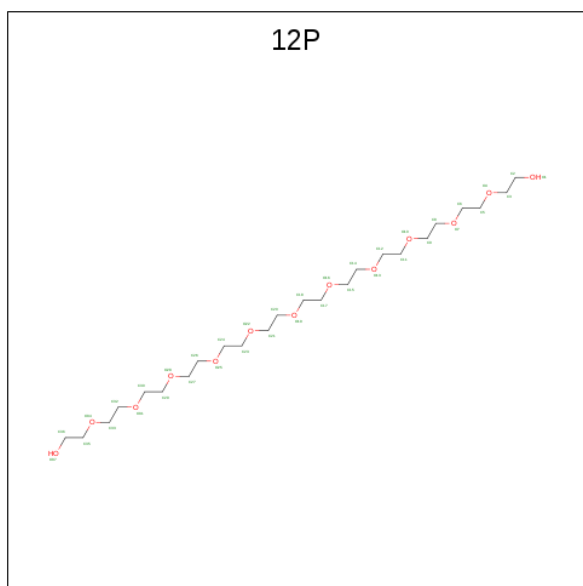
Mol	Chain	Residues	Atoms			ZeroOcc	AltConf
2	A	1	Total	O	S	0	0
			5	4	1		

Continued on next page...

Continued from previous page...

Mol	Chain	Residues	Atoms			ZeroOcc	AltConf
			Total	O	S		
2	D	1	5	4	1	0	0

- Molecule 3 is DODECAETHYLENE GLYCOL (three-letter code: 12P) (formula: $C_{24}H_{50}O_{13}$).



Mol	Chain	Residues	Atoms			ZeroOcc	AltConf
			Total	C	O		
3	B	1	31	20	11	0	0

- Molecule 4 is CHLORIDE ION (three-letter code: CL) (formula: Cl).

Mol	Chain	Residues	Atoms		ZeroOcc	AltConf
			Total	Cl		
4	D	1	1	1	0	0

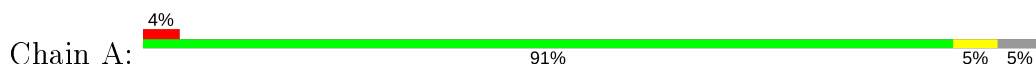
- Molecule 5 is water.

Mol	Chain	Residues	Atoms		ZeroOcc	AltConf
			Total	O		
5	A	244	244	244	0	0
5	B	246	246	246	0	0
5	C	232	232	232	0	0
5	D	219	219	219	0	0

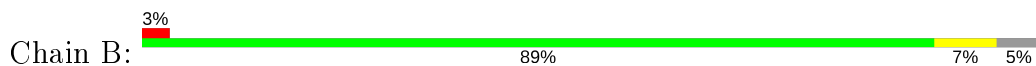
3 Residue-property plots [i](#)

These plots are drawn for all protein, RNA and DNA chains in the entry. The first graphic for a chain summarises the proportions of the various outlier classes displayed in the second graphic. The second graphic shows the sequence view annotated by issues in geometry and electron density. Residues are color-coded according to the number of geometric quality criteria for which they contain at least one outlier: green = 0, yellow = 1, orange = 2 and red = 3 or more. A red dot above a residue indicates a poor fit to the electron density ($RSRZ > 2$). Stretches of 2 or more consecutive residues without any outlier are shown as a green connector. Residues present in the sample, but not in the model, are shown in grey.

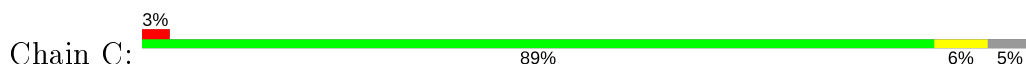
- Molecule 1: GFP-like non-fluorescent chromoprotein



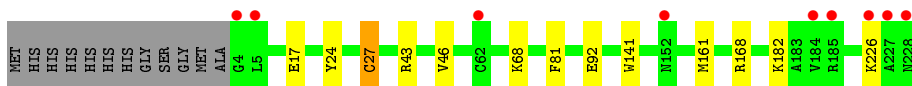
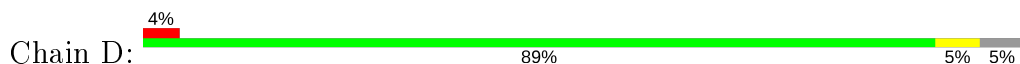
- Molecule 1: GFP-like non-fluorescent chromoprotein



- Molecule 1: GFP-like non-fluorescent chromoprotein



- Molecule 1: GFP-like non-fluorescent chromoprotein



4 Data and refinement statistics

Property	Value	Source
Space group	P 1 21 1	Depositor
Cell constants a, b, c, α , β , γ	54.34Å 122.06Å 75.25Å 90.00° 108.75° 90.00°	Depositor
Resolution (Å)	33.68 – 1.63 33.67 – 1.63	Depositor EDS
% Data completeness (in resolution range)	95.9 (33.68-1.63) 95.9 (33.67-1.63)	Depositor EDS
R_{merge}	0.09	Depositor
R_{sym}	(Not available)	Depositor
$\langle I/\sigma(I) \rangle$ ¹	1.02 (at 1.62Å)	Xtrriage
Refinement program	PHENIX (1.13_2998: ???)	Depositor
R, R_{free}	0.178 , 0.214 0.178 , 0.214	Depositor DCC
R_{free} test set	5488 reflections (4.94%)	wwPDB-VP
Wilson B-factor (Å ²)	21.8	Xtrriage
Anisotropy	0.646	Xtrriage
Bulk solvent k_{sol} (e/Å ³), B_{sol} (Å ²)	0.33 , 46.0	EDS
L-test for twinning ²	$\langle L \rangle = 0.50$, $\langle L^2 \rangle = 0.33$	Xtrriage
Estimated twinning fraction	0.020 for h,-k,-h-l	Xtrriage
F_o, F_c correlation	0.97	EDS
Total number of atoms	8225	wwPDB-VP
Average B, all atoms (Å ²)	31.0	wwPDB-VP

Xtrriage's analysis on translational NCS is as follows: *The largest off-origin peak in the Patterson function is 8.44% of the height of the origin peak. No significant pseudotranslation is detected.*

¹Intensities estimated from amplitudes.

²Theoretical values of $\langle |L| \rangle$, $\langle L^2 \rangle$ for acentric reflections are 0.5, 0.333 respectively for untwinned datasets, and 0.375, 0.2 for perfectly twinned datasets.

5 Model quality [i](#)

5.1 Standard geometry [i](#)

Bond lengths and bond angles in the following residue types are not validated in this section: 12P, CRU, SO4, CL

The Z score for a bond length (or angle) is the number of standard deviations the observed value is removed from the expected value. A bond length (or angle) with $|Z| > 5$ is considered an outlier worth inspection. RMSZ is the root-mean-square of all Z scores of the bond lengths (or angles).

Mol	Chain	Bond lengths		Bond angles	
		RMSZ	# Z >5	RMSZ	# Z >5
1	A	0.44	0/1844	0.59	0/2488
1	B	0.43	0/1846	0.59	0/2490
1	C	0.40	0/1854	0.58	0/2500
1	D	0.40	0/1838	0.56	0/2479
All	All	0.42	0/7382	0.58	0/9957

There are no bond length outliers.

There are no bond angle outliers.

There are no chirality outliers.

There are no planarity outliers.

5.2 Too-close contacts [i](#)

In the following table, the Non-H and H(model) columns list the number of non-hydrogen atoms and hydrogen atoms in the chain respectively. The H(added) column lists the number of hydrogen atoms added and optimized by MolProbity. The Clashes column lists the number of clashes within the asymmetric unit, whereas Symm-Clashes lists symmetry related clashes.

Mol	Chain	Non-H	H(model)	H(added)	Clashes	Symm-Clashes
1	A	1811	0	1737	8	0
1	B	1809	0	1744	16	0
1	C	1817	0	1753	10	0
1	D	1805	0	1738	8	0
2	A	5	0	0	0	0
2	D	5	0	0	0	0
3	B	31	0	41	3	0
4	D	1	0	0	2	0
5	A	244	0	0	1	0

Continued on next page...

Continued from previous page...

Mol	Chain	Non-H	H(model)	H(added)	Clashes	Symm-Clashes
5	B	246	0	0	1	0
5	C	232	0	0	2	0
5	D	219	0	0	3	0
All	All	8225	0	7013	38	0

The all-atom clashscore is defined as the number of clashes found per 1000 atoms (including hydrogen atoms). The all-atom clashscore for this structure is 3.

All (38) close contacts within the same asymmetric unit are listed below, sorted by their clash magnitude.

Atom-1	Atom-2	Interatomic distance (Å)	Clash overlap (Å)
4:D:301:CL:CL	5:D:514:HOH:O	2.22	0.92
1:A:213:TYR:CE1	1:B:226:LYS:HG3	2.28	0.68
4:D:301:CL:CL	5:D:575:HOH:O	2.48	0.68
1:A:181:LYS:NZ	5:A:403:HOH:O	2.25	0.67
1:C:16:MET:HE3	1:C:25:PHE:HE2	1.60	0.66
1:A:130:ASP:OD2	1:D:168:ARG:NH1	2.37	0.57
1:C:85:PHE:O	1:C:182:LYS:NZ	2.38	0.57
1:D:27:CYS:HB3	1:D:46:VAL:HA	1.87	0.57
1:D:141:TRP:CD2	1:D:161:MET:HE1	2.40	0.56
1:C:151:GLU:OE1	1:D:168:ARG:NH2	2.41	0.54
1:B:96:THR:HG21	3:B:301:12P:H202	1.90	0.54
1:B:2:MET:N	5:B:408:HOH:O	2.46	0.48
1:A:5:LEU:HD23	1:A:5:LEU:HA	1.71	0.47
1:B:180:SER:CB	1:B:187:LEU:HD11	2.44	0.47
1:C:40:GLN:HE22	1:C:67:SER:HB3	1.80	0.47
1:A:213:TYR:CD1	1:B:226:LYS:HG3	2.49	0.47
1:C:222:ASP:OD1	5:C:301:HOH:O	2.20	0.47
1:A:161:MET:HB2	1:A:172:CYS:SG	2.55	0.47
1:C:208:GLU:HB2	5:C:308:HOH:O	2.15	0.45
1:B:125:THR:OG1	1:D:92[B]:GLU:OE1	2.30	0.45
1:B:161:MET:HB2	1:B:172:CYS:SG	2.57	0.45
1:A:92[B]:GLU:OE1	1:C:125:THR:OG1	2.34	0.44
1:D:182:LYS:HG3	5:D:555:HOH:O	2.18	0.44
1:C:16:MET:HE1	1:C:59:LEU:HD13	1.99	0.44
1:D:68:LYS:HE2	1:D:81:PHE:CE2	2.53	0.43
1:B:180:SER:HB3	1:B:187:LEU:HD11	2.01	0.43
1:C:2:MET:HG2	1:C:36:PHE:CE2	2.54	0.43
1:B:35:PRO:HA	1:B:70:PHE:HA	2.01	0.43
1:D:17:GLU:OE1	1:D:24:TYR:OH	2.30	0.43
1:C:68:LYS:HD3	1:C:178:TYR:CE1	2.55	0.42

Continued on next page...

Continued from previous page...

Atom-1	Atom-2	Interatomic distance (Å)	Clash overlap (Å)
1:B:226:LYS:HB3	1:B:226:LYS:HE3	1.94	0.42
1:B:126:ASN:HD21	3:B:301:12P:H91	1.85	0.42
1:B:182:LYS:HB2	1:B:182:LYS:HE3	1.91	0.41
1:B:2:MET:HE1	1:B:8:GLU:OE1	2.21	0.41
1:A:206:LYS:HB2	1:A:208:GLU:HG2	2.02	0.41
1:B:126:ASN:ND2	3:B:301:12P:H91	2.36	0.41
1:B:68:LYS:HE2	1:B:81:PHE:CZ	2.55	0.41

There are no symmetry-related clashes.

5.3 Torsion angles [i](#)

5.3.1 Protein backbone [i](#)

In the following table, the Percentiles column shows the percent Ramachandran outliers of the chain as a percentile score with respect to all X-ray entries followed by that with respect to entries of similar resolution.

The Analysed column shows the number of residues for which the backbone conformation was analysed, and the total number of residues.

Mol	Chain	Analysed	Favoured	Allowed	Outliers	Percentiles	
1	A	224/235 (95%)	216 (96%)	7 (3%)	1 (0%)	34	15
1	B	225/235 (96%)	218 (97%)	7 (3%)	0	100	100
1	C	225/235 (96%)	219 (97%)	6 (3%)	0	100	100
1	D	223/235 (95%)	216 (97%)	7 (3%)	0	100	100
All	All	897/940 (95%)	869 (97%)	27 (3%)	1 (0%)	51	28

All (1) Ramachandran outliers are listed below:

Mol	Chain	Res	Type
1	A	227	ALA

5.3.2 Protein sidechains [i](#)

In the following table, the Percentiles column shows the percent sidechain outliers of the chain as a percentile score with respect to all X-ray entries followed by that with respect to entries of similar resolution.

The Analysed column shows the number of residues for which the sidechain conformation was analysed, and the total number of residues.

Mol	Chain	Analysed	Rotameric	Outliers	Percentiles	
1	A	192/198 (97%)	191 (100%)	1 (0%)	88	80
1	B	193/198 (98%)	193 (100%)	0	100	100
1	C	193/198 (98%)	193 (100%)	0	100	100
1	D	192/198 (97%)	189 (98%)	3 (2%)	62	40
All	All	770/792 (97%)	766 (100%)	4 (0%)	88	80

All (4) residues with a non-rotameric sidechain are listed below:

Mol	Chain	Res	Type
1	A	205	LYS
1	D	27	CYS
1	D	43	ARG
1	D	226	LYS

Some sidechains can be flipped to improve hydrogen bonding and reduce clashes. There are no such sidechains identified.

5.3.3 RNA [i](#)

There are no RNA molecules in this entry.

5.4 Non-standard residues in protein, DNA, RNA chains [i](#)

4 non-standard protein/DNA/RNA residues are modelled in this entry.

In the following table, the Counts columns list the number of bonds (or angles) for which Mogul statistics could be retrieved, the number of bonds (or angles) that are observed in the model and the number of bonds (or angles) that are defined in the Chemical Component Dictionary. The Link column lists molecule types, if any, to which the group is linked. The Z score for a bond length (or angle) is the number of standard deviations the observed value is removed from the expected value. A bond length (or angle) with $|Z| > 2$ is considered an outlier worth inspection. RMSZ is the root-mean-square of all Z scores of the bond lengths (or angles).

Mol	Type	Chain	Res	Link	Bond lengths			Bond angles		
					Counts	RMSZ	# Z > 2	Counts	RMSZ	# Z > 2
1	CRU	A	64	1	21,25,26	3.68	4 (19%)	24,34,36	3.03	8 (33%)
1	CRU	B	64	1	21,25,26	3.57	4 (19%)	24,34,36	2.74	9 (37%)
1	CRU	C	64	1	21,25,26	3.48	3 (14%)	24,34,36	3.09	9 (37%)

Mol	Type	Chain	Res	Link	Bond lengths			Bond angles		
					Counts	RMSZ	# Z > 2	Counts	RMSZ	# Z > 2
1	CRU	D	64	1	21,25,26	3.52	3 (14%)	24,34,36	2.87	7 (29%)

In the following table, the Chirals column lists the number of chiral outliers, the number of chiral centers analysed, the number of these observed in the model and the number defined in the Chemical Component Dictionary. Similar counts are reported in the Torsion and Rings columns. '-' means no outliers of that kind were identified.

Mol	Type	Chain	Res	Link	Chirals	Torsions	Rings
1	CRU	A	64	1	-	1/8/32/33	0/2/2/2
1	CRU	B	64	1	-	1/8/32/33	0/2/2/2
1	CRU	C	64	1	-	1/8/32/33	0/2/2/2
1	CRU	D	64	1	-	1/8/32/33	0/2/2/2

All (14) bond length outliers are listed below:

Mol	Chain	Res	Type	Atoms	Z	Observed(Å)	Ideal(Å)
1	A	64	CRU	CB2-CA2	15.93	1.48	1.35
1	B	64	CRU	CB2-CA2	15.43	1.48	1.35
1	D	64	CRU	CB2-CA2	15.22	1.47	1.35
1	C	64	CRU	CB2-CA2	15.08	1.47	1.35
1	A	64	CRU	C2-N3	-3.38	1.31	1.39
1	D	64	CRU	C2-N3	-3.21	1.32	1.39
1	C	64	CRU	O2-C2	2.86	1.29	1.23
1	B	64	CRU	C1-N2	2.85	1.39	1.33
1	B	64	CRU	O2-C2	2.74	1.28	1.23
1	B	64	CRU	C2-N3	-2.60	1.33	1.39
1	D	64	CRU	O2-C2	2.53	1.28	1.23
1	C	64	CRU	C2-N3	-2.52	1.33	1.39
1	A	64	CRU	O2-C2	2.19	1.27	1.23
1	A	64	CRU	CA2-C2	-2.01	1.46	1.48

All (33) bond angle outliers are listed below:

Mol	Chain	Res	Type	Atoms	Z	Observed(°)	Ideal(°)
1	C	64	CRU	O2-C2-CA2	-9.39	125.69	130.96
1	A	64	CRU	CA2-C2-N3	8.60	107.44	103.37
1	D	64	CRU	O2-C2-CA2	-7.87	126.54	130.96
1	D	64	CRU	CA2-C2-N3	7.65	106.99	103.37
1	A	64	CRU	O2-C2-CA2	-7.42	126.79	130.96
1	C	64	CRU	CA2-C2-N3	6.92	106.64	103.37
1	B	64	CRU	CA2-C2-N3	6.79	106.58	103.37
1	B	64	CRU	O2-C2-CA2	-5.81	127.70	130.96

Continued on next page...

Continued from previous page...

Mol	Chain	Res	Type	Atoms	Z	Observed(°)	Ideal(°)
1	B	64	CRU	CG1-CB1-CA1	-5.37	96.87	113.53
1	C	64	CRU	CG1-CB1-CA1	-5.02	97.97	113.53
1	A	64	CRU	CB2-CA2-N2	4.62	135.24	128.83
1	D	64	CRU	CG1-CB1-CA1	-4.16	100.62	113.53
1	D	64	CRU	CB2-CA2-N2	3.76	134.04	128.83
1	C	64	CRU	C2-CA2-N2	-3.73	106.32	108.93
1	A	64	CRU	C2-CA2-N2	-3.64	106.38	108.93
1	D	64	CRU	C2-CA2-N2	-3.59	106.42	108.93
1	C	64	CRU	CB2-CA2-N2	3.49	133.67	128.83
1	B	64	CRU	CD2-CG2-CD1	3.47	122.78	117.64
1	B	64	CRU	CB2-CA2-N2	3.26	133.35	128.83
1	A	64	CRU	CB2-CA2-C2	-3.26	118.38	122.28
1	B	64	CRU	C2-CA2-N2	-3.12	106.75	108.93
1	A	64	CRU	CD2-CG2-CD1	3.06	122.17	117.64
1	A	64	CRU	CG1-CB1-CA1	-3.06	104.04	113.53
1	B	64	CRU	CE1-CD1-CG2	-3.01	117.33	121.25
1	C	64	CRU	CD2-CG2-CD1	2.91	121.95	117.64
1	B	64	CRU	N3-C1-N2	-2.55	109.91	113.28
1	D	64	CRU	CD2-CG2-CD1	2.36	121.13	117.64
1	D	64	CRU	CB2-CA2-C2	-2.30	119.53	122.28
1	C	64	CRU	N3-C1-N2	-2.26	110.30	113.28
1	B	64	CRU	O-C-CA3	-2.14	119.94	126.39
1	A	64	CRU	CE2-CD2-CG2	-2.09	118.52	121.25
1	C	64	CRU	CD2-CG2-CB2	-2.06	114.22	121.22
1	C	64	CRU	CE1-CD1-CG2	-2.04	118.59	121.25

There are no chirality outliers.

All (4) torsion outliers are listed below:

Mol	Chain	Res	Type	Atoms
1	B	64	CRU	C1-CA1-CB1-CG1
1	C	64	CRU	C1-CA1-CB1-CG1
1	D	64	CRU	C1-CA1-CB1-CG1
1	A	64	CRU	C1-CA1-CB1-CG1

There are no ring outliers.

No monomer is involved in short contacts.

5.5 Carbohydrates i

There are no carbohydrates in this entry.

5.6 Ligand geometry

Of 4 ligands modelled in this entry, 1 is monoatomic - leaving 3 for Mogul analysis.

In the following table, the Counts columns list the number of bonds (or angles) for which Mogul statistics could be retrieved, the number of bonds (or angles) that are observed in the model and the number of bonds (or angles) that are defined in the Chemical Component Dictionary. The Link column lists molecule types, if any, to which the group is linked. The Z score for a bond length (or angle) is the number of standard deviations the observed value is removed from the expected value. A bond length (or angle) with $|Z| > 2$ is considered an outlier worth inspection. RMSZ is the root-mean-square of all Z scores of the bond lengths (or angles).

Mol	Type	Chain	Res	Link	Bond lengths			Bond angles		
					Counts	RMSZ	# Z > 2	Counts	RMSZ	# Z > 2
3	12P	B	301	-	30,30,36	0.70	0	29,29,35	1.94	2 (6%)
2	SO4	A	301	-	4,4,4	0.13	0	6,6,6	0.08	0
2	SO4	D	302	-	4,4,4	0.15	0	6,6,6	0.08	0

In the following table, the Chirals column lists the number of chiral outliers, the number of chiral centers analysed, the number of these observed in the model and the number defined in the Chemical Component Dictionary. Similar counts are reported in the Torsion and Rings columns. '-' means no outliers of that kind were identified.

Mol	Type	Chain	Res	Link	Chirals	Torsions	Rings
3	12P	B	301	-	-	17/28/28/34	-

There are no bond length outliers.

All (2) bond angle outliers are listed below:

Mol	Chain	Res	Type	Atoms	Z	Observed(°)	Ideal(°)
3	B	301	12P	O10-C9-C8	6.01	136.50	110.07
3	B	301	12P	O7-C8-C9	2.66	127.26	111.81

There are no chirality outliers.

All (17) torsion outliers are listed below:

Mol	Chain	Res	Type	Atoms
3	B	301	12P	O31-C32-C33-O34
3	B	301	12P	O25-C26-C27-O28
3	B	301	12P	O28-C29-C30-O31
3	B	301	12P	O19-C20-C21-O22
3	B	301	12P	O10-C11-C12-O13
3	B	301	12P	O22-C23-C24-O25

Continued on next page...

Continued from previous page...

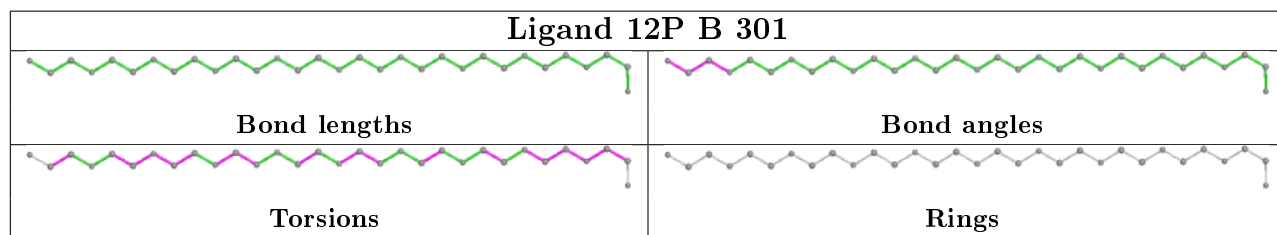
Mol	Chain	Res	Type	Atoms
3	B	301	12P	C33-C32-O31-C30
3	B	301	12P	O16-C17-C18-O19
3	B	301	12P	O13-C14-C15-O16
3	B	301	12P	C11-C12-O13-C14
3	B	301	12P	O34-C35-C36-O37
3	B	301	12P	C18-C17-O16-C15
3	B	301	12P	C32-C33-O34-C35
3	B	301	12P	C24-C23-O22-C21
3	B	301	12P	O7-C8-C9-O10
3	B	301	12P	C15-C14-O13-C12
3	B	301	12P	C36-C35-O34-C33

There are no ring outliers.

1 monomer is involved in 3 short contacts:

Mol	Chain	Res	Type	Clashes	Symm-Clashes
3	B	301	12P	3	0

The following is a two-dimensional graphical depiction of Mogul quality analysis of bond lengths, bond angles, torsion angles, and ring geometry for all instances of the Ligand of Interest. In addition, ligands with molecular weight > 250 and outliers as shown on the validation Tables will also be included. For torsion angles, if less than 5% of the Mogul distribution of torsion angles is within 10 degrees of the torsion angle in question, then that torsion angle is considered an outlier. Any bond that is central to one or more torsion angles identified as an outlier by Mogul will be highlighted in the graph. For rings, the root-mean-square deviation (RMSD) between the ring in question and similar rings identified by Mogul is calculated over all ring torsion angles. If the average RMSD is greater than 60 degrees and the minimal RMSD between the ring in question and any Mogul-identified rings is also greater than 60 degrees, then that ring is considered an outlier. The outliers are highlighted in purple. The color gray indicates Mogul did not find sufficient equivalents in the CSD to analyse the geometry.



5.7 Other polymers [i](#)

There are no such residues in this entry.

5.8 Polymer linkage issues

There are no chain breaks in this entry.

6 Fit of model and data

6.1 Protein, DNA and RNA chains

In the following table, the column labelled ‘#RSRZ> 2’ contains the number (and percentage) of RSRZ outliers, followed by percent RSRZ outliers for the chain as percentile scores relative to all X-ray entries and entries of similar resolution. The OWAB column contains the minimum, median, 95th percentile and maximum values of the occupancy-weighted average B-factor per residue. The column labelled ‘Q< 0.9’ lists the number of (and percentage) of residues with an average occupancy less than 0.9.

Mol	Chain	Analysed	<RSRZ>	#RSRZ>2	OWAB(Å ²)	Q<0.9
1	A	223/235 (94%)	-0.02	10 (4%) 33 29	19, 26, 47, 87	0
1	B	223/235 (94%)	0.00	8 (3%) 42 39	18, 26, 48, 74	0
1	C	223/235 (94%)	-0.01	8 (3%) 42 39	21, 29, 53, 72	0
1	D	222/235 (94%)	0.04	9 (4%) 37 33	21, 29, 50, 94	0
All	All	891/940 (94%)	0.00	35 (3%) 39 36	18, 28, 51, 94	0

All (35) RSRZ outliers are listed below:

Mol	Chain	Res	Type	RSRZ
1	D	227	ALA	8.2
1	A	227	ALA	7.3
1	A	3	ALA	7.1
1	C	227	ALA	5.8
1	A	228	ASN	5.5
1	B	227	ALA	5.4
1	A	184	VAL	5.0
1	D	228	ASN	5.0
1	D	4	GLY	4.8
1	A	152	ASN	4.0
1	B	2	MET	3.8
1	C	3	ALA	3.6
1	A	185	ARG	3.5
1	C	2	MET	3.4
1	B	152	ASN	3.4
1	B	3	ALA	3.3
1	C	184	VAL	3.3
1	A	4	GLY	3.2
1	C	152	ASN	2.9
1	C	187	LEU	2.9
1	B	160	VAL	2.8

Continued on next page...

Continued from previous page...

Mol	Chain	Res	Type	RSRZ
1	C	185	ARG	2.8
1	D	152	ASN	2.7
1	D	62	CYS	2.6
1	B	183	ALA	2.6
1	A	160	VAL	2.5
1	D	226	LYS	2.5
1	D	184	VAL	2.4
1	A	187	LEU	2.4
1	D	5	LEU	2.4
1	D	185	ARG	2.3
1	B	145	THR	2.2
1	A	186	ALA	2.2
1	C	203	ARG	2.1
1	B	209	TYR	2.0

6.2 Non-standard residues in protein, DNA, RNA chains [i](#)

In the following table, the Atoms column lists the number of modelled atoms in the group and the number defined in the chemical component dictionary. The B-factors column lists the minimum, median, 95th percentile and maximum values of B factors of atoms in the group. The column labelled 'Q< 0.9' lists the number of atoms with occupancy less than 0.9.

Mol	Type	Chain	Res	Atoms	RSCC	RSR	B-factors(Å ²)	Q<0.9
1	CRU	D	64	24/25	0.89	0.14	22,32,42,47	0
1	CRU	A	64	24/25	0.91	0.13	20,27,45,46	0
1	CRU	C	64	24/25	0.94	0.13	22,27,57,61	4
1	CRU	B	64	24/25	0.95	0.14	18,24,48,51	2

6.3 Carbohydrates [i](#)

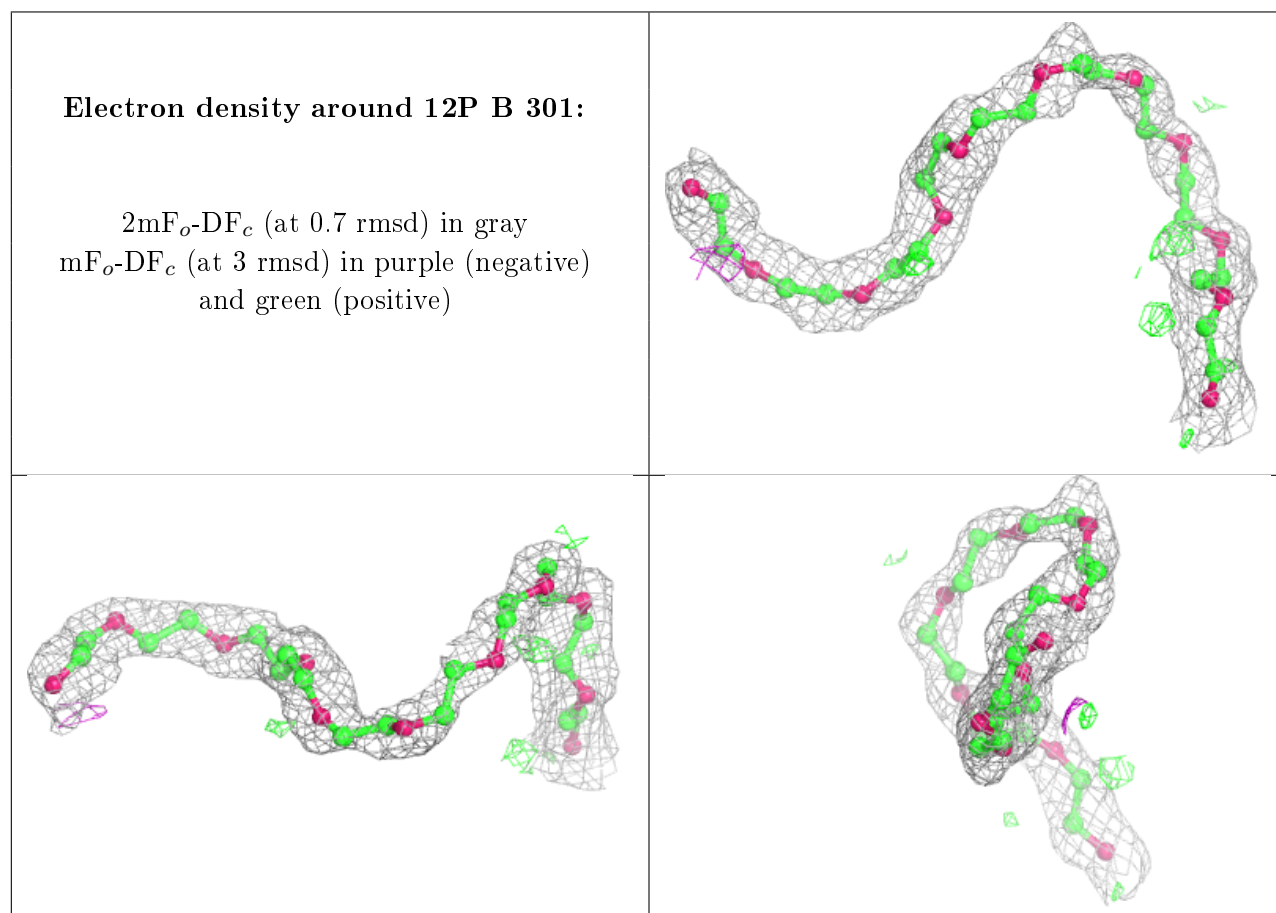
There are no carbohydrates in this entry.

6.4 Ligands [i](#)

In the following table, the Atoms column lists the number of modelled atoms in the group and the number defined in the chemical component dictionary. The B-factors column lists the minimum, median, 95th percentile and maximum values of B factors of atoms in the group. The column labelled 'Q< 0.9' lists the number of atoms with occupancy less than 0.9.

Mol	Type	Chain	Res	Atoms	RSCC	RSR	B-factors(\AA^2)	Q<0.9
2	SO4	D	302	5/5	0.82	0.20	118,119,120,120	0
3	12P	B	301	31/37	0.85	0.14	50,60,71,73	0
2	SO4	A	301	5/5	0.86	0.21	113,113,116,116	0
4	CL	D	301	1/1	0.95	0.07	67,67,67,67	0

The following is a graphical depiction of the model fit to experimental electron density of all instances of the Ligand of Interest. In addition, ligands with molecular weight > 250 and outliers as shown on the geometry validation Tables will also be included. Each fit is shown from different orientation to approximate a three-dimensional view.



6.5 Other polymers [i](#)

There are no such residues in this entry.